

**UNCLASSIFIED**

---

---

**AD 285 273**

*Reproduced  
by the*

**ARMED SERVICES TECHNICAL INFORMATION AGENCY  
ARLINGTON HALL STATION  
ARLINGTON 12, VIRGINIA**



---

---

**UNCLASSIFIED**

NOTICE: When government or other drawings, specifications or other data are used for any purpose other than in connection with a definitely related government procurement operation, the U. S. Government thereby incurs no responsibility, nor any obligation whatsoever; and the fact that the Government may have formulated, furnished, or in any way supplied the said drawings, specifications, or other data is not to be regarded by implication or otherwise as in any manner licensing the holder or any other person or corporation, or conveying any rights or permission to manufacture, use or sell any patented invention that may in any way be related thereto.

NOLTR 62-112

CATALOGED BY ASTIA  
AS 52113

285 273

THE DESIGN AND TESTING OF THE  
NAVAL ORDNANCE LABORATORY'S  
2-IN. TWO-STAGE GUN

- RELEASED TO ASTIA  
BY THE NAVAL ORDNANCE LABORATORY
- Without restrictions
  - For release to Military and Government Agencies only.
  - Approval by Bufileps required for release to contractors.
  - Approval by Bufileps required for all subsequent release.

001-112

29 JUNE 1962

# NOL

UNITED STATES NAVAL ORDNANCE LABORATORY, WHITE OAK, MARYLAND

NOLTR 62-112

104

**Best  
Available  
Copy**

UNCLASSIFIED  
NOLTR 62-112

Ballistics Research Report 71

THE DESIGN AND TESTING OF THE NAVAL ORDNANCE LABORATORY'S  
2-IN. TWO-STAGE GUN

Prepared by:

H. L. Carter  
D. A. Oakes  
R. Piacesi  
B. M. Shepard

ABSTRACT: A 2 in. two-stage gun has been successful in launching complex models in the Naval Ordnance Laboratory's 1,000-ft. Hyperballistics Range No. 4 at velocities in excess of 15,000 fps. The design of the 2-inch gun and the results of the first 44 shots are reviewed.

PUBLISHED SEPTEMBER 1962

U. S. NAVAL ORDNANCE LABORATORY  
WHITE OAK, MARYLAND

1  
UNCLASSIFIED

29 June 1962

This report presents the successful results of the application of extensive theoretical interior ballistics research to the design of a hypervelocity gun. The purpose of this research was to obtain high-speed aerodynamic data by launching complex missile models in the Naval Ordnance Laboratory's 1,000-ft. Hyperballistics Range No. 4. This work was sponsored by the Re-entry Body section of the Special Projects Office, Bureau of Naval Weapons, under the Applied Research Program in Aeroballistics.

The authors wish to acknowledge the theoretical interior ballistic research of Dr. A. E. Seigel and Mr. D. F. Gates as being the basis for the design of this gun. Acknowledgement is also extended to Mr. E. O. Stengard, formerly of the Naval Weapons Plant, for coordinating the gun design and manufacture.

W. D. COLEMAN  
Captain, USN  
Commander

*A. E. Seigel*  
A. E. SEIGEL  
By direction

CONTENTS

	Page
Introduction . . . . .	1
The Design of the Gun . . . . .	1
Shakedown Tests of the Gun at the Naval Weapons Laboratory, Dahlgren, Virginia . . . . .	1
Results of Firings at the Naval Ordnance Laboratory . .	3
Conclusions . . . . .	4

ILLUSTRATIONS

Figure	Title
1	2-in. Two-Stage Light Gas Gun in the Naval Ordnance Laboratory's 1,000-ft. Hyperballistics Range No. 4
2	2-in. Two-Stage Light Gas Gun
3	Calculated Strength Values of the 2-inch Gun
4	Primary Chamber Breech Assembly
5	Primary Chamber - Pump Tube Assembly
6	Pump Tube - Barrel Assembly
7	Two-Stage Gun Time-Distance Plot
8	Pressure Behind Model vs Bore Travel in Calibers
9	Projectile Velocity vs Bore Travel in Calibers
10	Typical Shadowgraph of Model in Flight in Naval Ordnance Laboratory's 1,000-ft. Hyperballistics Range No. 4
11	Sabot and Model

Table

1	Computer Performance Calculations for 240 Gram Projectile
2	Computer Performance Calculations for 120 Gram Projectile
3	Computer Performance Calculations for 60 Gram Projectile
4	Firings at the Naval Weapons Laboratory
5	Firings at the Naval Ordnance Laboratory

## INTRODUCTION

A two-stage, light-gas gun was desired for launching complex models in the Naval Ordnance Laboratory's 1,000-ft. Hyperballistics Range No. 4 at velocities in excess of 12,000 fps. The gun was designed to minimize modifications to the existing gun mount and to the 1,000-ft. range. Space limitations, along with interior and exterior ballistic requirements, resulted in the selection of a 2-inch bore diameter. The installation of the 2-inch gun in the 1,000-ft. range is shown in figure 1.

## THE DESIGN OF THE GUN

The 2-inch gun and mount are illustrated in figure 2. Calculated strength values of the 2-inch gun are shown in figure 3. The primary chamber is closed at the rear by a steel cup containing expanding lips on the forward end of the cup as shown in figure 4. The screw box liner, breech plug, and breech plug operating mechanism are standard 12-inch naval gun parts. Primers are attached to a steel rod which is bolted to the breech cup. The bag of gunpowder is placed around the primer rod. The primer ignition wire, piston-type strain-gage connection, and gas-fill lines are brought out through the sealing cup and then through the center of the breech plug.

Illustrated in figure 5 are the piston, the obturating ring for the front end of the primary chamber, the diaphragm, and the diaphragm transition piece. The final version of the piston is a 24-inch-long, low-density polyethylene cylinder with a phenolic sealing plug at the rear.

For the heavy piston firings, a 40° included angle piston buffer was inserted into the high-pressure section of the pump tube as shown in figure 6.

SHAKEDOWN TESTS OF THE GUN AT  
THE NAVAL WEAPONS LABORATORY, DAHLGREN, VIRGINIA

Initial firings of the 2-inch gun were made at the Naval Weapons Laboratory, Dahlgren, Virginia for reasons of safety and so that existing programs in the 1,000-ft. range could continue. Instrumentation included pressure gages in both chambers and a high-speed camera to measure velocity. A convenient and efficient test procedure evolved at the Naval Weapons Laboratory. Three ordnancemen, two electronics

technicians, and two photographers required about two hours of preparation to fire the gun. The ordnancemen first loaded the missile and locked the barrel up with the pump tube. Next, the piston and primary chamber diaphragm were installed, and the pump tube with attached barrel was locked up with the rear chamber. While this was being done, the photographers loaded and checked out the high-speed camera. Also, the electronics technicians checked the firing circuit and pressure gage circuits. The area was then cleared of personnel and the assembled breech cup, primer rod, and powder bag were brought out of the magazine and inserted into the rear chamber. The breech was then locked and the gas-fill lines were connected. About 15 minutes were required to load gas into both chambers. A sequence timer fired the gun after first starting the camera.

After the shot, powder gas trapped in both chambers by the piston, which was swedged into the piston buffer, was vented. The gun loading procedure was essentially reversed after the shot. At the Naval Weapons Laboratory, the piston was removed with jacks which required from one to three hours. The condensed powder combustion products were removed as soon as possible to prevent rusting. Within three hours after the shot, the film was ready for viewing. A black background, with white vertical lines spaced at one-foot intervals, was placed parallel to the flight path. The projectile velocity could be computed since the film framing speed was known.

Computations were made by the analysis group utilizing the IBM 7090 computer to predict the performance of the 2-in. two-stage gun. This was done using a hydrodynamics computer code based on the Lagrangian scheme. The code solves numerically the problem of one-dimensional flow through ducts of varying cross section including the automatic treatment of multiple shocks. A more detailed report on the method of calculation will be published separately\*.

Many calculations were made varying each of the effective parameters of the system, these being the back chamber conditions, the piston weight, the pump tube conditions, the projectile weight and the projectile release pressure. In choosing the initial loading conditions for the shots on the basis of the calculations, two things were kept in mind: the tapered section of the gun could only withstand 125,000 psi and the pressure on the base of the model must not exceed about 35,000 psi.

\* NOLTR 62-87, "Computer Analysis of Two-Stage Hypervelocity Launchers" (in preparation)

Tables 1, 2, and 3 list the results of the computer calculations for a 240 gram, 120 gram, and 60 gram projectile, respectively. It is seen from these tables that a heavy piston produces lower model acceleration than the light piston. Figure 7 is a typical distance time plot as obtained from the computer showing the trajectories of shocks between the piston and projectile, the piston trajectory, and the projectile trajectory. Figure 8 is a plot of pressure behind the model as a function of distance along the barrel. Figure 9 is a velocity distance plot of the projectile and shows clearly the impingements of the shocks on the back of the model.

Ten shots were made using the light-piston shock-compressed driver-gas method. The piston was a 0.6-caliber-long polyethylene cylinder. The primary chamber pressure was varied from 17,000 psi to 25,000 psi, obtained by burning gunpowder in the presence of helium. The pump tube was loaded with helium at pressures from 1,500 psi down to 750 psi. Gun functioning and proofing were the main objectives of the first 10 shots since only a 48-caliber-long barrel was available.

Before the 11th shot, a 240-caliber-long barrel was installed. On the first shot with a heavy piston, several inches of the piston buffer were torn off so it was shortened by machining a short 20° angle on the leading edge of the piston buffer as shown in figure 5.

Fifteen heavy piston shots were made. The piston weight was varied from 3,000 grams to 9,000 grams. Primary chamber pressures ranged from 14,000 psi to 25,000 psi. Pump tube loading pressures varied from 300 psi to 1,500 psi of hydrogen. Results of the firings at the Naval Weapons Laboratory are listed in table 4. The over-all performance of the 2-inch gun during the heavy piston shots was satisfactory so test firings at the Naval Weapons Laboratory were concluded after a total of 25 shots.

#### RESULTS OF FIRINGS AT THE NAVAL ORDNANCE LABORATORY

An urgent, high-velocity program for Project Polaris was awaiting the 2-in. two-stage gun, so installation in the Naval Ordnance Laboratory's 1,000-ft. Hypertballistics Range No. 4 was accomplished in a minimum of time. One test shot was fired and then a series of 19 program shots followed as shown in table 5. Two of the 19 program shots were unsuccessful due to improper model design and the two highest velocity attempts failed. In 15 of the 19 shots, models were launched

successfully up to 15,200 fps. A large percentage of the 19 shadowgraph stations installed in the 1,000-ft. Hyperballistics Range No. 4 operated properly. Aerodynamic coefficients were obtained at Mach numbers 10, 12, and 14. A typical shadowgraph is shown in figure 10. The sabot and model used for the 19 program shots are illustrated in figure 11. The tapered skirt on the sabot serves as a gas seal and as a diaphragm with a release pressure of 5,000 psi. Computations had dictated the unexpectedly high pump tube loading pressure of 1,500 psi. For a heavy missile weight of 250 grams, lower initial pressure causes excessively high accelerations and a rapid loss of driving pressure in the last half of the barrel. The piston was loosened with hydraulic pressure and then driven back out of the pump tube by high-pressure gas. Piston removal can be accomplished in 30 minutes.

#### CONCLUSIONS

The computer was invaluable as an aid in selecting initial loading conditions to minimize projectile acceleration for a required velocity. Calculations confirmed the fact that a low release pressure for a heavy projectile reduced peak acceleration with little loss in velocity. As can be seen from figure 7, at high initial pump tube pressures, the piston enters the tapered piston buffer too late in the interior ballistic process for the swedging action of the piston to increase the missile velocity.

The 2-inch gun was designed early in 1959. Firing results indicate that the primary chamber is stronger than necessary. Bore erosion is low due to the use of hydrogen at high loading pressures as the driver gas, therefore a spare set of barrels is being made of autofrettaged monobloc construction.

The 2-in. two-stage gun operated with a minimum of mechanical trouble at the Naval Ordnance Laboratory. With improved operations, a firing rate of one completely instrumented program shot per day in the 1,000-ft. Hyperballistics Range No. 4 has been attained.

Back Chamber Pressure (psi)	Pump Tube Pressure (psi H <sub>2</sub> )	Piston Weight (gm)	Projectile Release Pressure (psi)	Pressure Felt By Projectile (psi)	Maximum Pressure In Taper (psi)	Velocity 240 Calibers (ft/sec)
20,000	750	5,540	5,000	82,000	125,000	18,200
20,000	500	5,540	5,000	175,000	195,000	18,730*
20,000	750	1,000	5,000	116,900	118,600	14,600
20,000	750	2,700	5,000	91,350	121,200	17,400*
20,000	750	5,540	5,000	82,000	125,000	18,200
20,000	750	9,000	5,000	91,840	123,650	18,500
20,000	1,000	1,000	5,000	111,900	122,900	13,900
20,000	1,000	5,000	5,000	63,000	107,300	17,350
20,000	1,000	9,000	5,000	64,600	112,300	17,600
20,000	1,500	1,000	5,000	61,500	82,600	12,650
20,000	1,500	5,000	5,000	59,450	78,900	15,200
20,000	1,500	9,000	5,000	29,800	81,400	15,000
30,000	1,500	9,000	5,000	69,300	155,700	19,200
30,000	2,000	9,000	5,000	52,000	129,200	17,200
30,000	1,500	18,000	10,000	53,700	128,000	18,500
30,000	2,000	18,000	10,000	42,700	112,500	17,100
30,000	2,000	18,000	5,000	32,000	115,350	14,900
40,000	2,000	2,000	5,000	107,500	136,700	17,400
40,000	2,500	2,000	5,000	114,000	246,500	23,650
40,000	2,500	2,000	5,000	76,400	173,600	18,700

\* (200 cal.)

Initial pump tube temperature 300°K

TABLE 1  
COMPUTER PERFORMANCE CALCULATIONS FOR 240 GRAM PROJECTILE

Back Chamber Pressure (psi)	Pump Tube Pressure (psi $\times 10^2$ )	Piston Weight (gm)	Projectile Release Pressure (psi)	Pressure Felt By Projectile (psi)	Maximum Pressure In Taper (psi)	Velocity 240 Calibers (ft/sec)
20,000	100	2,000	5,000	178,000	213,000	22,800
20,000	200	9,000	5,000	63,000	125,100	20,000
20,000	300	9,000	5,000	57,300	101,200	20,600
20,000	500	2,000	5,000	87,000	121,700	22,300
20,000	500	5,000	5,000	68,000	126,300	22,000
20,000	500	9,000	5,000	56,400	121,600	20,600
20,000	750	2,000	5,000	54,250	98,200	20,400
20,000	500	18,000	5,000	21,750	64,300	17,800
30,000	500	18,000	5,000	41,600	105,800	20,700
20,000	1,000	18,000	5,000	15,600	80,600	17,100
20,000	1,000	18,000	20,000	41,800	87,400	19,300
20,000	1,000	1,000	5,000	42,000	67,900	17,500
20,000	1,000	5,000	5,000	37,700	106,700	19,900
20,000	1,000	9,000	5,000	23,000	102,500	19,500
20,000	1,500	18,000	5,000	9,300	68,000	12,600

Initial pump tube temperature 300°K

TABLE 2

COMPUTER PERFORMANCE CALCULATIONS FOR 120 GRAM PROJECTILE

Back Chamber Pressure (psi)	Pump Tube Pressure (psi #2)	Piston Weight (gm)	Projectile Release Pressure (psi)	Pressure Felt By Projectile (psi)	Maximum Pressure In Taper (psi)	Velocity 240 Calibers (ft/sec)
10,000	100	500	5,000	49,000	72,000	25,600
20,000	100	1,000	5,000	69,600	83,000	25,700
20,000	100	9,000	20,000	90,000	122,000	23,200
20,000	300	500	5,000	76,000	101,200	25,300
20,000	300	1,000	5,000	117,700	117,700	27,000
20,000	300	9,000	5,000	35,670	95,300	24,400
0,000	500	9,000	5,000	35,200	117,700	25,200
20,000	1,000	9,000	5,000	13,600	104,000	19,700
20,000	1,000	9,000	20,000	28,700	98,300	20,900
0,000	1,500	9,000	5,000	29,000	161,700	20,100
0,000	1,500	9,000	5,000	8,700	82,600	12,600

initial pump tube temperature 300° K

TABLE 3

COMPUTER PERFORMANCE CALCULATIONS FOR 60 GRAM PROJECTILE

NOLTR 62-112

SHOT NO.	MISSILE		PRIMARY CHAMBER PEAK PRESSURE (PSI.)	PUMP TUBE LOADING PRESSURE (PSI.)	PISTON WEIGHT (grams)	MUZZLE VELOCITY (FT./SEC.)	REMARKS
	WEIGHT (grams)	TYPE					
1	117	Nylon Cyl.	17,000	1,500 He	525	---	Missile broke up.
2	125	"	21,000	1,200 He	525	---	"
3	125	"	---	900 He	900	---	"
4	130	Lexan Cyl.	23,000	900 He	900	---	Chronograph failed
5	130	"	---	900 He	900	6,500	
6	130	"	---	750 He	900	7,000	
7	130	"	25,000	750 He	900	---	Chronograph failed
8	130	Mg base / Nylon Cyl.	24,000	900 He	900	---	Nylon broke up.
9	198	Saboted Mod.	24,000	900 He	900	5,400	
10	193	"	24,300	900 He	900	---	Camera failed
11	64	Mg. Cyl.	14,300	300 H <sub>2</sub>	7090	22,000	H <sub>2</sub> leaked into bore before shot
12	167	Mg. Cyl.	14,600	300 H <sub>2</sub>	6950	13,600	
13	236	"	15,000	300 H <sub>2</sub>	5680	13,600	
14	240	"	18,700	300 H <sub>2</sub>	5650	12,500	
15	240	"	21,000	750 H <sub>2</sub>	5650	12,500	

NOLTR 62-112

SHOT NO	MISSILE		PRIMARY CHAMBER PEAK PRESSURE (P.S.I.)	PUMP TUBE LOADING PRESSURE (P.S.I.)	PISTON WEIGHT (grams)	MUZZLE VELOCITY (FT./SEC.)	REMARKS	
	WEIGHT (grams)	TYPE						
16	240	Saboted Model	22,000	500 H <sub>2</sub>	5670	---	Missile broke up	
17	240	MS Cyl.	18,800	700 H <sub>2</sub>	2830	11,100	Piston diameter and seal was changed for shots 17 - 23	
18	"	"	20,000	"	2880	10,500	NOLTR 62.112	
19	"	"	22,000	"	2880	9,500		
20	"	"	19,500	"	2880	10,800		
21	"	"	17,800	"	3070	10,900		
22	"	"	18,800	"	3070	12,400		
23	"	"	---	"	3070	11,400		
24	252	Saboted Model	---	1,500 H <sub>2</sub>	7850	---		
25	230	"	23,400	1,500 H <sub>2</sub>	8660	11,800		Missile broke up Clearance between sabot and bore was reduced over previous shot

Note: The first 10 shots were made in a 43-caliber-long barrel. A 240-caliber-long barrel was used for shots 11 - 25. Bore contained air at atmospheric pressure except shot no. 11

TABLE 4  
FIRINGS AT THE NAVAL WEAPONS LABORATORY

SHOT NO.	MISSILE WEIGHT (grams)	PRIMARY CHAMBER PEAK PRESSURE (P.S.I.)	RANGE PRESSURE (mm Hg)	MUZZLE VELOCITY (Ft./SEC.)
Test				
1	230	17,800	193	11,500
2	253	17,500	98	12,200
3	243	23,000	333	13,700
4	257	---	287	Model Failed
5	254	22,600	82	14,000
6	252	20,300	95	13,000
7	256	16,100	98	12,500
8	256	15,800	99	11,900
9	239	20,500	112	13,600
10	255	15,700	77	11,600
11	252	15,500	70	14,600
12	252	27,200	88	12,000
13	254	---	92	Model Failed
14	225	15,000	90	11,300
15	253	27,500	91	10,900
16	258	---	90	Model Failed
17	258	14,100	85	11,300
18	265	---	84	11,000
19	259	15,200	85	15,200
			85	11,400

Note. Pump tube loading pressure was 1,500 psi H<sub>2</sub> for all shots  
 Piston weight was 3,600 grams  
 Bore contained air at the range pressure listed for each shot except helium was used on shots 2 and 3

TABLE 5  
 FIRINGS AT THE NAVAL ORDNANCE LABORATORY



FIG. 1 TWO INCH TWO-STAGE LIGHT GAS GUN  
IN NAVAL ORDNANCE LABORATORY'S  
1,000 FOOT HYPERBALLISTICS RANGE NO. 4

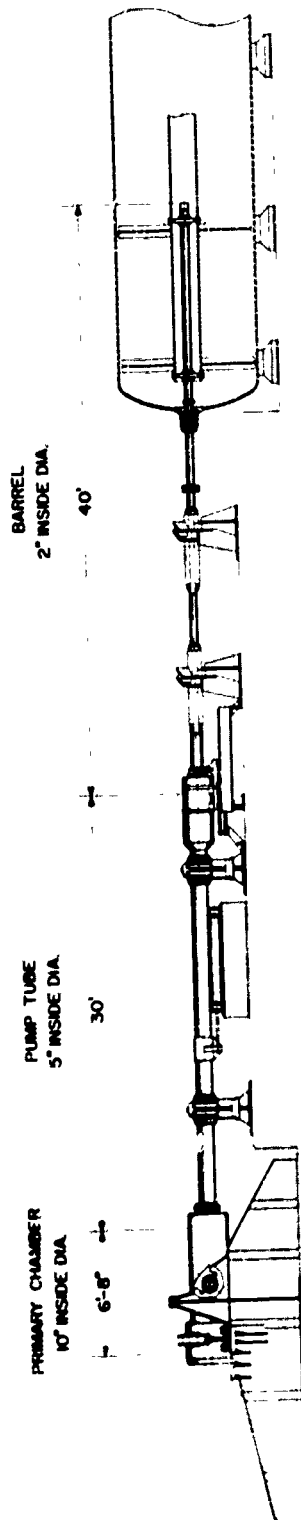


FIG. 2 TWO-INCH TWO-STAGE LIGHT GAS GUN

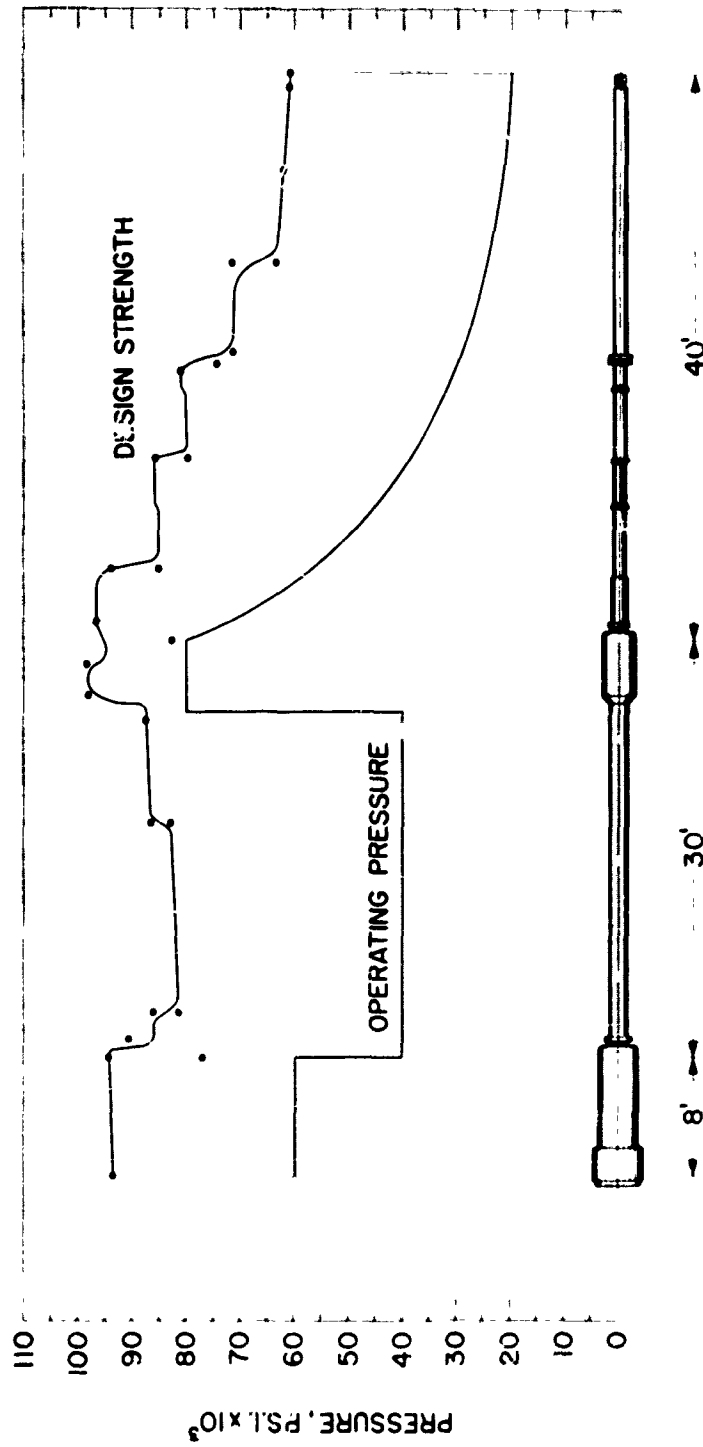


FIG. 3 CALCULATED STRENGTH VALUES  
TWO INCH TWO-STAGE LIGHT GAS GUN

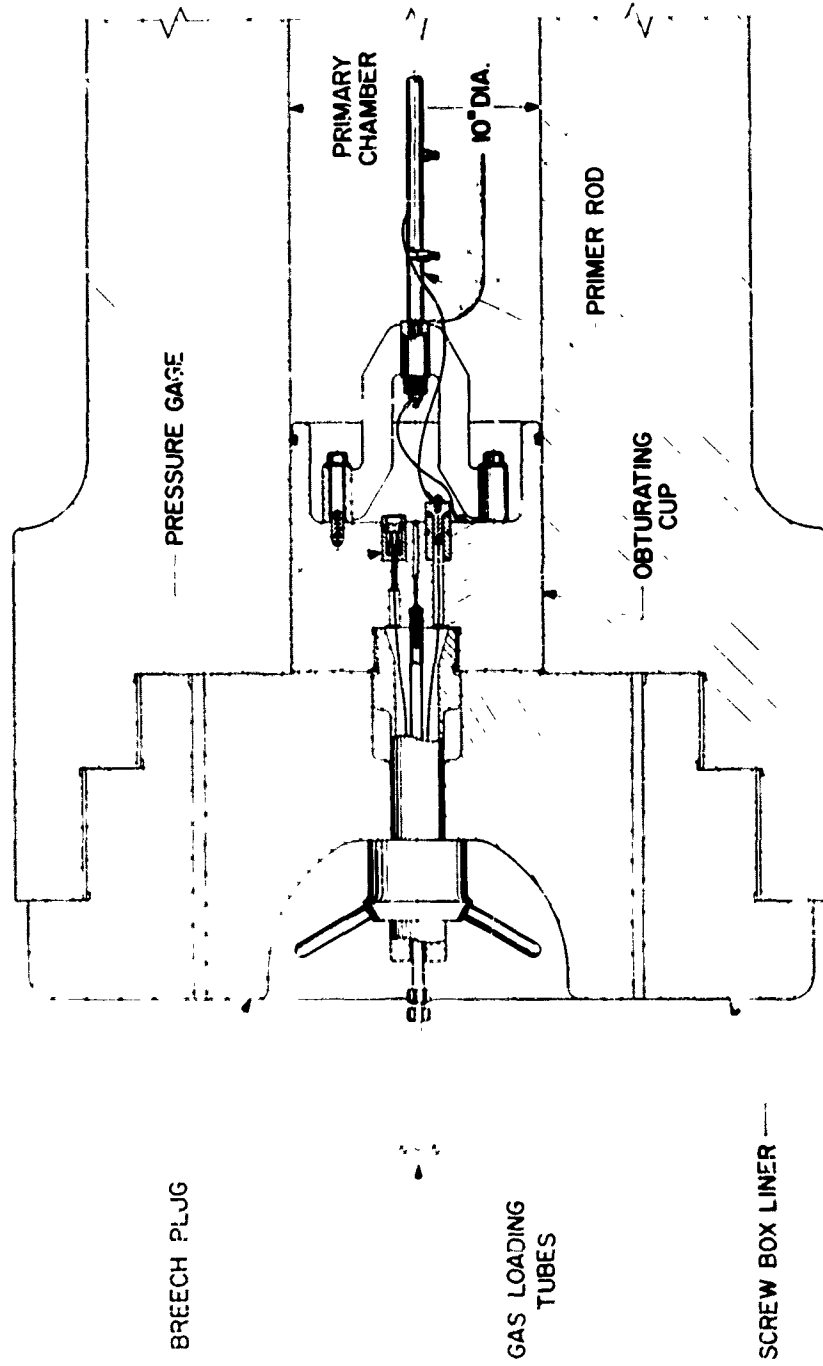


FIG. 4 PRIMARY CHAMBER BREECH ASSEMBLY

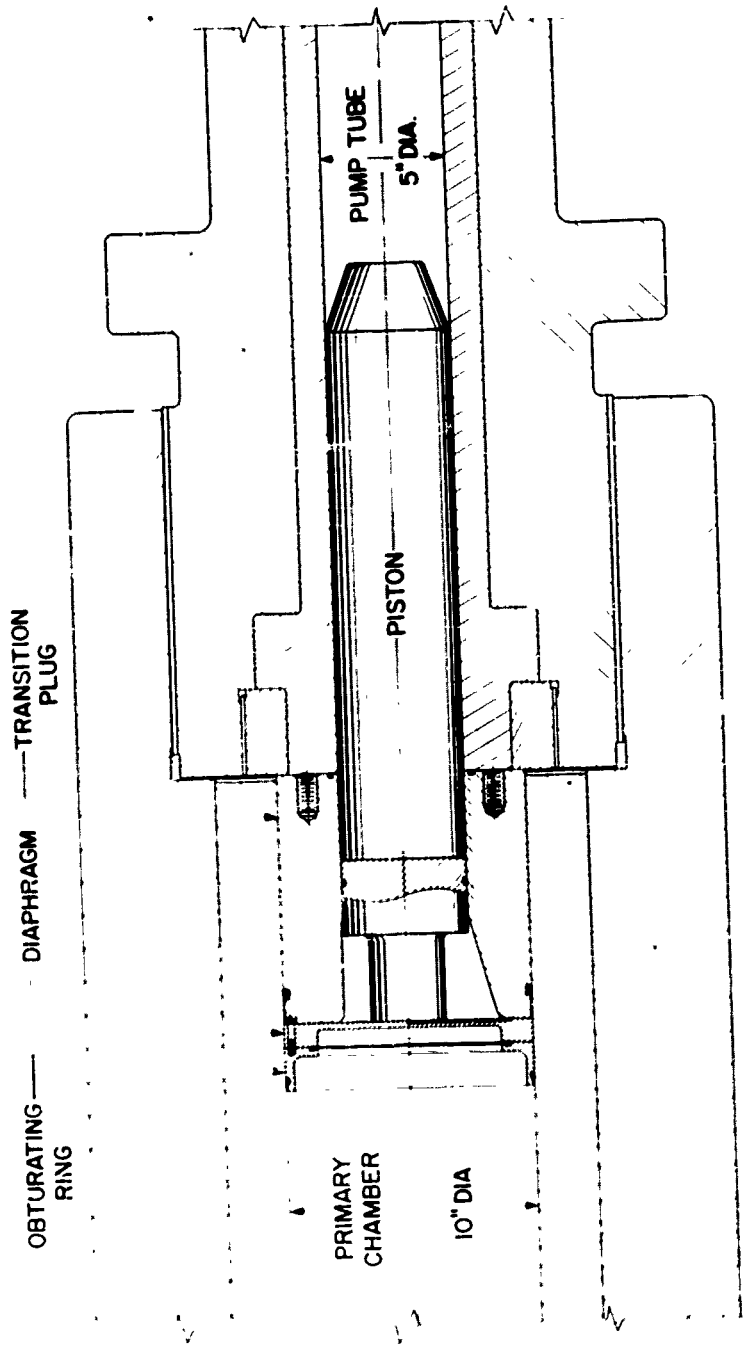


FIG.5 PRIMARY CHAMBER - PUMP TUBE ASSEMBLY

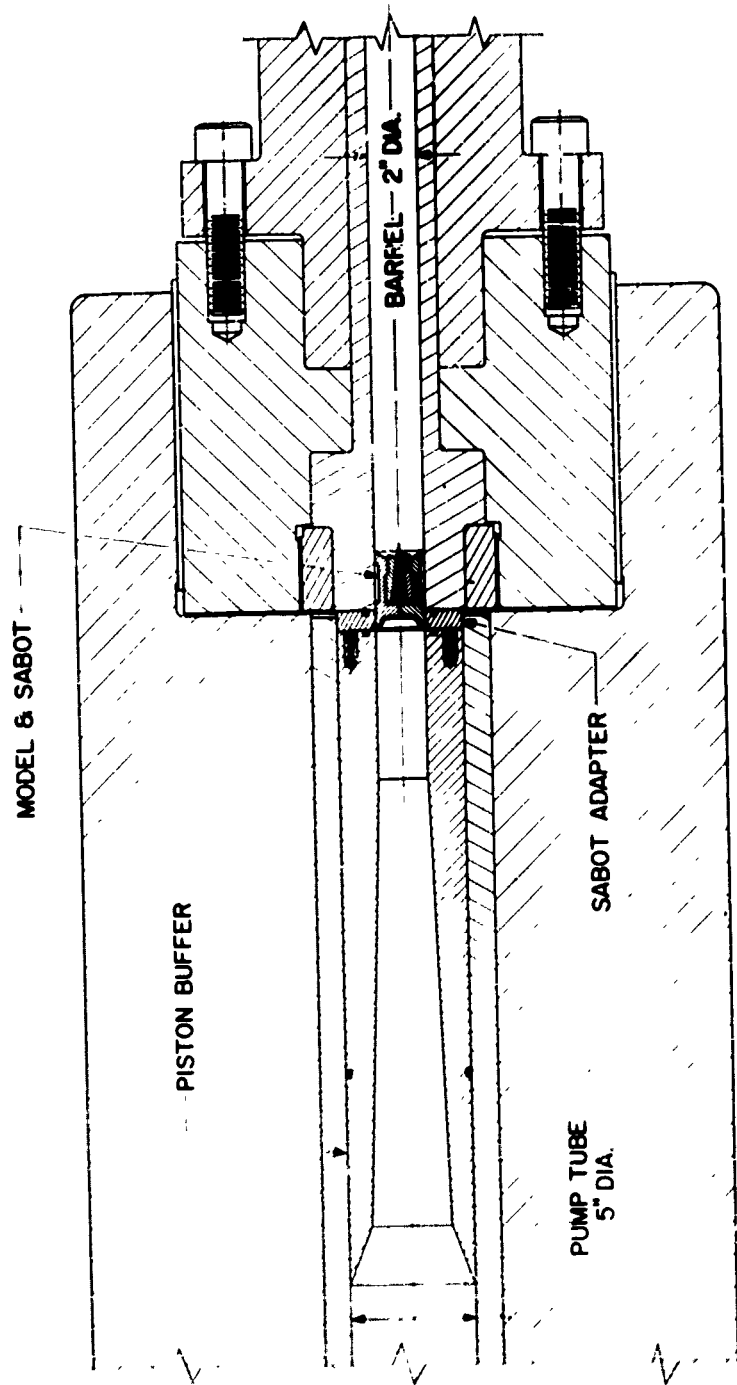


FIG. 6 PUMP TUBE - BARREL ASSEMBLY

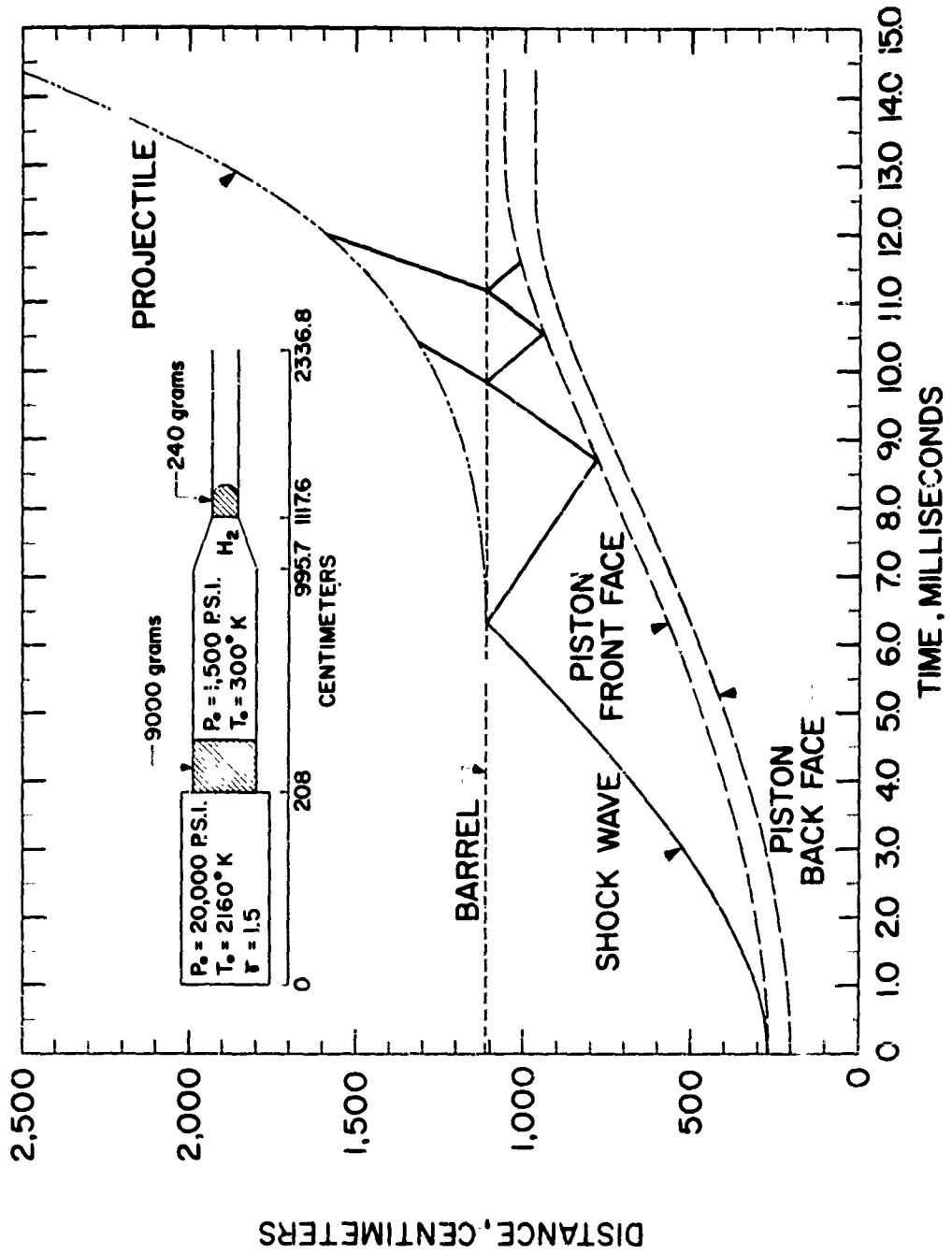


FIG. 7 TWO-STAGE GUN, TIME-DISTANCE PLOT

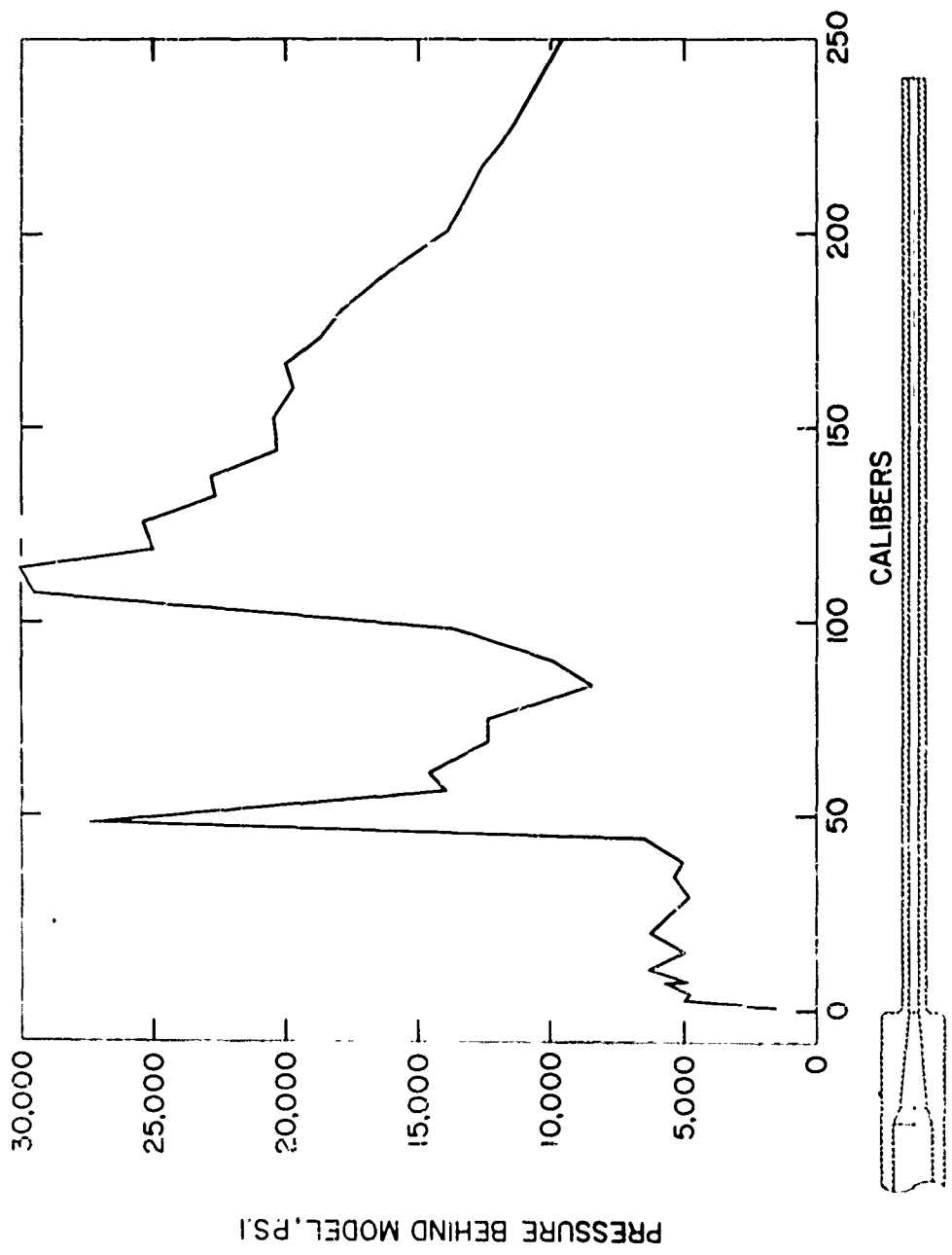


FIG.8 PRESSURE BEHIND MODEL VS BORE TRAVEL IN CALIBERS

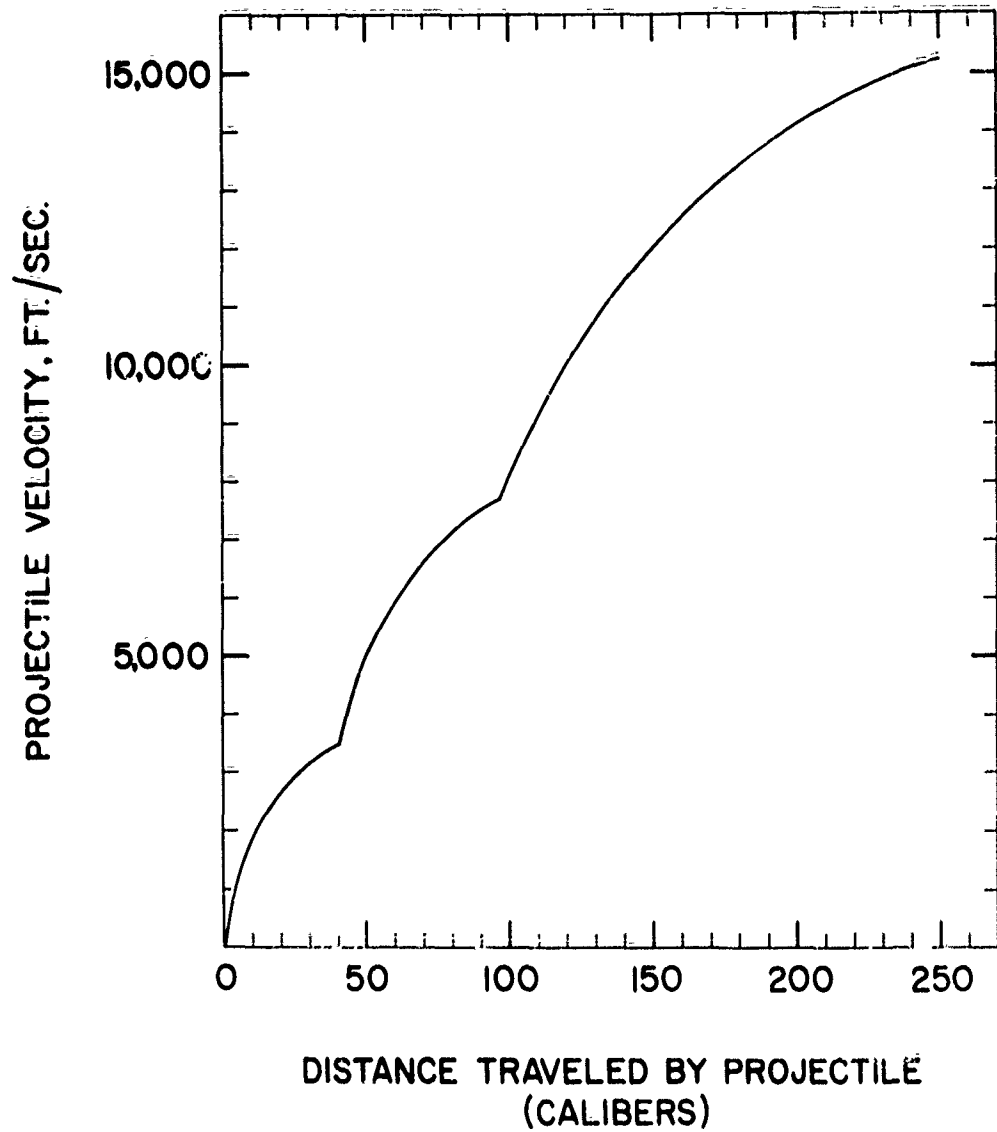


FIG.9 PROJECTILE VELOCITY VS BORE TRAVEL IN CALIBERS

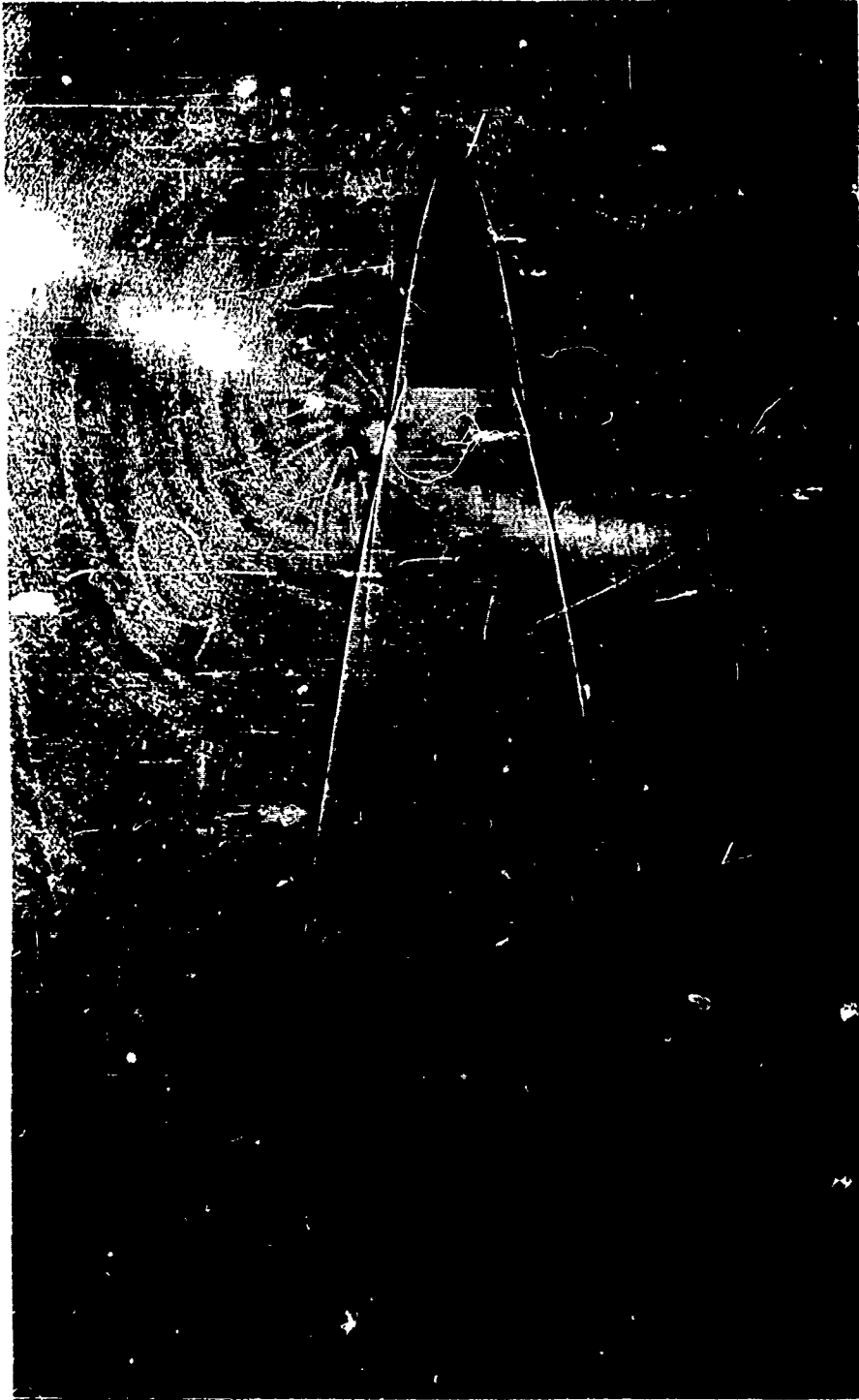


FIG 10. TYPICAL SHADOWGRAPH OF MODEL IN FLIGHT  
IN NAVAL ORDNANCE LABORATORY'S 1,000 FOOT  
HYPERBALLISTICS RANGE NO. 4

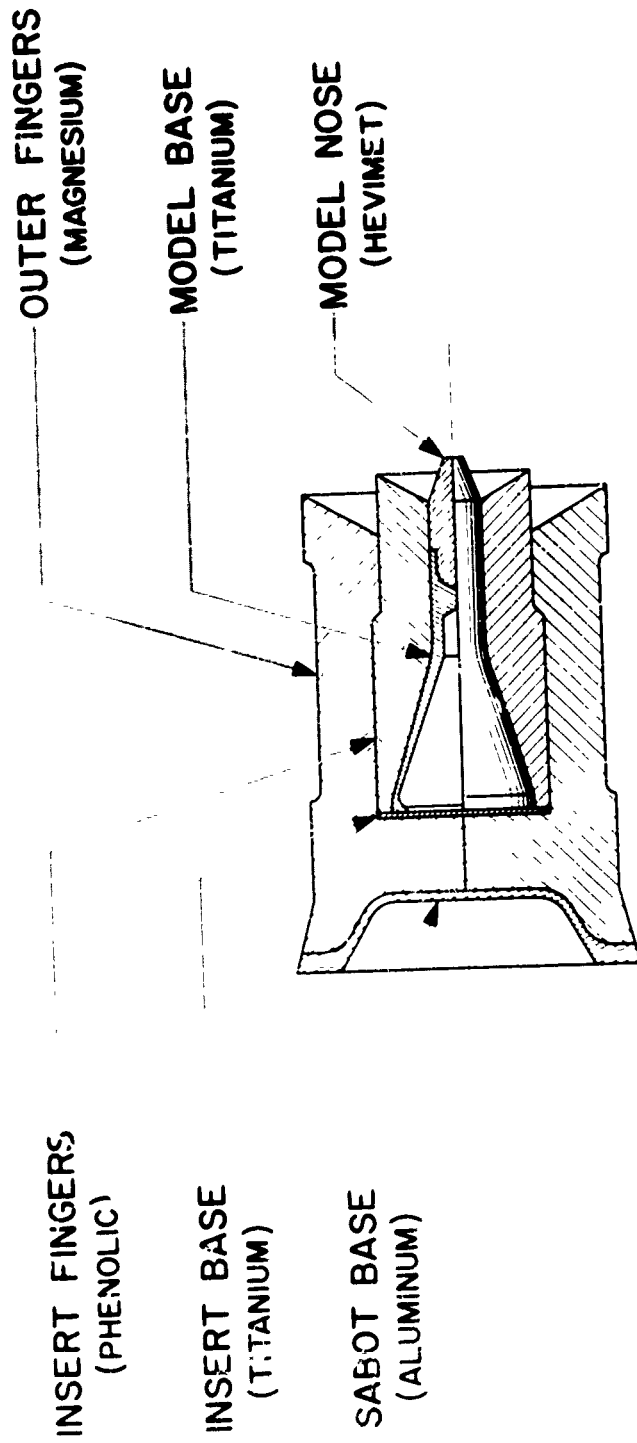


FIG. 11 SABOT AND MODEL

## External Distribution List

	<u>No. of Copies</u>
Chief, Bureau of Naval Weapons Department of the Navy Washington 25, D. C.	
Attn: RMMO	1
Attn: RMGA	1
Attn: RRMA	1
Director, Special Projects Department of the Navy Washington 25, D. C.	
Attn: SP-20	4
Attn: SP-27	2
Attn: SP-272	1
Office of Naval Research Room 2709 - T-3 Washington 25, D. C.	
Attn: Head, Mechanics Br.	1
Commanding Officer Office of Naval Research Branch Office, Box 39, Navy 100 Fleet Post Office, New York, N. Y.	
	5
Director, DTMB Aerodynamics Laboratory Washington 7, D. C.	
Attn: Library	1
Naval Weapons Laboratory Dahlgren, Va.	
Attn: Library	1
Commander U. S. Naval Ordnance Test Station China Lake, Calif.	
Attn: Technical Library	1
Director Naval Research Laboratory Washington 25, D. C.	
Attn: Code 2027	1
Attn: Mr. Edward Chapin, Code 6310	1

	<u>No. of Copies</u>
Los Alamos Scientific Laboratory P. O. Box 1663 Los Alamos, New Mexico Attn: Dr. Donald F. MacMillan N-1 Group Leader	1
Institute for Defense Analyses Advanced Research Projects Agency Washington 25, D. C. Attn: Mr. W. G. May General Sciences Branch	1
Kaman Aircraft Corporation Nuclear Division Colorado Springs, Colorado Attn: Dr. A. P. Bridges	1
U. S. Atomic Energy Commission P. O. Box 62 Oak Ridge, Tennessee Attn: TRI:NLP:ATD:10-7	1
Sandia Corporation Livermore Laboratory P. O. Box 969 Livermore, Calif.	1
United Aircraft Corporation Research Laboratories East Hartford 8, Conn. Attn: Mr. H. J. Clarette Attn: Mr. H. Taylor	1 1
Sandia Corporation Sandia Base Albuquerque, New Mexico Attn: Mr. Alan Pope	1
Defense Metals Information Center Battelle Memorial Institute 505 King Avenue Columbus, 1, Ohio	1
Commanding General Army Rocket and Guided Missile Agency Redstone Arsenal, Alabama Attn: John Morrow	1

No. of Copies

NASA	
Langley Research Center	
Langley Field, Va.	
Attn: Librarian	1
Attn: C. H. McLellan	1
Attn: J. J. Stack	1
Attn: Adolf Busemann	1
Attn: Rodger W. Peters (Structures Res.Div.)	1
Attn: Russell Hopko, PARD	1
NASA	
Ames Research Center	
Moffett Field, Calif.	
Attn: Librarian	1
NASA	
Lewis Research Center	
21000 Brookpart Rd.	
Cleveland, Ohio	
Attn: Chief, Propulsion Aerodynamics Div.	1
Attn: Mr. George Mandel, Chief, Library	2
Office of the Assistant	
Secretary of Defense (R and D)	
Room 3E1041, The Pentagon	
Washington 25, D. C.	
Attn: Library (Technical)	1
Research and Development Board	
Room 3D1041, The Pentagon	
Washington 25, D. C.	
Attn: Library	2
ASTIA	
Arlington Hall Station	
Arlington 12, Va.	
Attn: TIPDR	10
Commander, NMC	
Point Mugu, Calif.	
Attn: Technical Library	1
Commanding General	
Aberdeen Proving Ground, Md.	
Attn: Technical Info. Br.	1
Attn: Ballistics Research Laboratories	1

	<u>No. of Copies</u>
APL/JHU 8621 Georgia Ave. Silver Spring, Md.	
Attn: Tech. Reports Group	2
Attn: Dr. D. Fox	1
Attn: Dr. Freeman Hill	1
Attn: Dr. L. L. Cronvich	1
Attn: Librarian	1
AVCO Manufacturing Corp. Research and Advanced Development Div. 201 Lowell Street Wilmington, Mass.	
Attn: Librarian	1
AVCO Manufacturing Corp. Everett, Mass.	
Attn: Dr. Kantrowitz	1
General Electric Co. Space Vehicle and Missiles Dept. 21 South 12th St. Philadelphia, Pa.	
Attn: Dr. J. Stewart	1
Attn: Dr. Otto Klima	1
Attn: Mr. E. J. Nolan	1
Attn: Mr. L. McCreight	1
General Electric, Research Lab. 3198 Chestnut St. Philadelphia, Pa.	
Attn: Dr. Leo Steg	1
National Aeronautics and Space Admin. 1520 H Street, N. W. Washington, D. C.	
	5
NASA High-Speed Flight Station Edwards Field, Calif.	
Attn: W. C. Williams	1
Aerospace Corporation El Segundo, Calif.	
Attn: Dr. Bitondo	1

	<u>No. of Copies</u>
Director of Intelligence Headquarters, USAF Washington 25, D. C. Attn: AFOIN-3B	1
Commander Aeronautical Systems Division Wright-Patterson Air Force Base, Ohio Attn: WCOSI-3 WCLSW-5 WCRRD	2 1 3
Commander, AFBMD Air Res. and Develop. Command P. O. Box 262 Inglewood, Calif. Attn: WDTLAR	1
BSD (BSRF) A. F. Unit Post Office Los Angeles 45, Calif.	2
Chief, DASA The Pentagon Washington, D. C. Attn: Document Library	1
Headquarters Arnold Engineering Development Center Air Research and Development Center U. S. Air Force Arnold Air Force Station, Tenn. Attn: Technical Library Attn: AEOR	1 1
Commanding Officer, DOFL Washington 25, D. C. Attn: Library RM. 211, Bldg. 92	1
NASA George C. Marshall Space Flight Center Huntsville, Alabama Attn: M-S and M-PT (Mr. H. A. Connell) Attn: Dr. W. R. Lucas (M-SFM-M) Attn: Dr. Ernst Geissler	5 1 1
Office, Chief of Ordnance Department of the Army Washington 25, D. C. Attn: ORDTU	1

	<u>No. of Copies</u>
Lockheed Aircraft Corp. Missiles and Space Div. P. O. Box 504 Sunnyvale, Calif. Attn: Dr. L. H. Wilson	1
Lockheed Aircraft Corp. Research Lab. Palo Alto, California Attn: W. Griffith	1
Atomic Energy Commission Engineering Development Branch Division of Reactor Development Headquarters, US AEC Washington 25, D. C. Attn: Mr. J. M. Simmons Attn: Mr. M. J. Whitman Attn: Mr. J. Conners	1 1 1
University of California Lawrence Radiation Laboratory P. O. Box 808 Livermore, Calif. Attn: Mr. W. M. Wells, Propulsion Div. Attn: Mr. Carl Kline	1 1
Oak Ridge National Laboratory P. O. Box E, Oak Ridge, Tenn. Attn: Mr. W. D. Manly	1
General Applied Sciences Laboratories, Inc. Merrick and Stewart Avenues East Meadow, New York Attn: Mr. Robert Byrne	1
Jet Propulsion Laboratory 4800 Oak Grove Drive Pasadena 3, Calif. Attn: I. R. Kowlan, Chief, Reports Group Attn: Dr. L. Jaffee	1

	<u>No. of Copies</u>
National Bureau of Standards Washington 25, D. C. Attn: Dr. Galen B. Schubauer	1
Cornell Aeronautical Laboratory 4455 Genesee Street Buffalo, New York Attn: Dr. Gordon Hall	1
Dept. of Mechanical Engineering University of Delaware Newark, Delaware Attn: Dr. James P. Hartnett	1

CATALOGING INFORMATION FOR LIBRARY USE

BIBLIOGRAPHIC INFORMATION			
DESCRIPTORS	SECURITY CLASSIFICATION AND CODE COUNTRY	DESCRIPTORS	CODES
		Unclassified - 24	U024
NO: Technical Report	NO: 12		
NO: 12	620112		
NO: June 1962	0662		

SUBJECT ANALYSIS OF REPORT

DESCRIPTORS	CODES	DESCRIPTORS	CODES
Aerodynamics	AERD		
Hypervelocity	HYPV		
Mach	MACH		
10	10000		
12	12000		
14	14000		
Firings	FIRI		
Launchings	LAHC		
Missile	MISC		
Models	MODE		
Penetration	CCPI		
Body	BO F		

Naval Ordnance Laboratory, White Oak, Md.  
(MOLAR report 62-112)  
THE DESIGN AND TESTING OF THE NAVAL ORDNANCE LABORATORY'S 2-IN. TWO-STAGE GUN(U), by H. L. Carter and others. 29 June 1962. 4p. tables. (Ballistics Research report 71).

UNCLASSIFIED

A 2-in. two-stage gun has been successful in launching complex models in the Naval Ordnance Laboratory's 1,000-ft. Hyperballistics Range No. 4 at velocities in excess of 15,000 fps. The design of the 2-inch gun and the results of the first 44 shots are reviewed.

Abstract card is unclassified

1. Hypervelocity guns - Design  
2. Hypervelocity guns - Interiors or ballistics  
I. Title  
II. Carter, H.L.

Naval Ordnance Laboratory, White Oak, Md.  
(MOLAR report 62-112)  
THE DESIGN AND TESTING OF THE NAVAL ORDNANCE LABORATORY'S 2-IN. TWO-STAGE GUN(U), by H. L. Carter and others. 29 June 1962. 4p. tables. (Ballistics Research report 71).

UNCLASSIFIED

A 2-in. two-stage gun has been successful in launching complex models in the Naval Ordnance Laboratory's 1,000-ft. Hyperballistics Range No. 4 at velocities in excess of 15,000 fps. The design of the 2-inch gun and the results of the first 44 shots are reviewed.

Abstract card is unclassified

1. Hypervelocity guns - Design  
2. Hypervelocity guns - Interiors or ballistics  
I. Title  
II. Carter, H.L.