

UNCLASSIFIED

AD NUMBER

AD334351

CLASSIFICATION CHANGES

TO: unclassified

FROM: confidential

LIMITATION CHANGES

TO:
Approved for public release, distribution
unlimited

FROM:
Controlling DoD Organization: Director,
Naval Research Laboratory, Washington, DC
20375.

AUTHORITY

NRL Code/5309 memo dtd 20 Feb 1997; NRL
Code/5309 memo dtd 20 Feb 1997

THIS PAGE IS UNCLASSIFIED

UNCLASSIFIED

AD NUMBER
AD334351
CLASSIFICATION CHANGES
TO
confidential
FROM
secret
AUTHORITY
31 Jan 1975, per doc marking, DoDD 5200.10

THIS PAGE IS UNCLASSIFIED

CONFIDENTIAL

*Reproduced
by the*

ARMED SERVICES TECHNICAL INFORMATION AGENCY
ARLINGTON HALL STATION
ARLINGTON 12, VIRGINIA



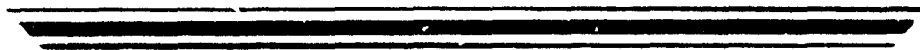
DOWNGRADED AT 3 YEAR INTERVALS:
DECLASSIFIED AFTER 12 YEARS
DOD DIR 5200.10

CONFIDENTIAL

AD 334 351

*Reproduced
by the*

ARMED SERVICES TECHNICAL INFORMATION AGENCY
ARLINGTON HALL STATION
ARLINGTON 12, VIRGINIA



NOTICE: When government or other drawings, specifications or other data are used for any purpose other than in connection with a definitely related government procurement operation, the U. S. Government thereby incurs no responsibility, nor any obligation whatsoever; and the fact that the Government may have formulated, furnished, or in any way supplied the said drawings, specifications, or other data is not to be regarded by implication or otherwise as in any manner licensing the holder or any other person or corporation, or conveying any rights or permission to manufacture, use or sell any patented invention that may in any way be related thereto.

SECRET

334 351

NRL Report 5881
Copy No. 23

MADRE EVALUATION REPORT VII

[UNCLASSIFIED TITLE]

S. R. Curley, W. C. Headrick, J. M. Headrick,
F. H. Utley, J. L. Ahearn, and G. A. Skaggs

Radar Techniques Branch
Radar Division

January 22, 1963

SECRET

UNCLASSIFIED

Collection



U. S. NAVAL RESEARCH LABORATORY
Washington, D.C.

SECRET

DOWNGRADED AT 12-YEAR INTERVALS
NOT AUTOMATICALLY DECLASSIFIED
DOD DIR 5200.10



**Best
Available
Copy**

SECRET

Previous Reports in This Series

"Madre Evaluation Report," J. M. Headrick, B. N. Navid, J. L. Ahern, S. R. Curley, F. H. Utley, W. C. Headrick, and E. N. Zettle, NRL Memo Report 1251, Dec. 1961 (Secret Report, Unclassified Title)

"Madre Evaluation Report," J. M. Headrick, S. R. Curley, J. L. Ahern, W. C. Headrick, and F. H. Utley, NRL Memo Report 1287, Jan. 1962 (Secret Report, Unclassified Title)

"Madre Evaluation Report III," J. M. Headrick, S. R. Curley, M. E. Thorp, J. L. Ahern, F. H. Utley, W. C. Headrick, and D. C. Rohlf, NRL Memo Report 1316, Feb. 1962 (Secret Report, Unclassified Title)

"Madre Evaluation Report IV," J. M. Headrick, J. L. Ahern, S. R. Curley, E. W. Ward, F. H. Utley, and W. C. Headrick, NRL Report 5811, June 1962 (Secret Report, Unclassified Title)

"Madre Evaluation Report V," S. R. Curley, J. M. Headrick, J. L. Ahern, W. C. Headrick, F. H. Utley, D. C. Rohlf, and M. E. Thorp, NRL Report 5824, July 1962 (Secret Report, Unclassified Title)

"Madre Evaluation Report VI," J. M. Headrick, J. L. Ahern, S. R. Curley, F. J. Utley, W. C. Headrick, and M. E. Thorp, NRL Report 5825, July 1962 (Secret Report, Unclassified Title)

SECURITY

This document contains information affecting the national defense of the United States within the meaning of the Espionage Laws, Title 18, U.S.C., Sections 793 and 794. The transmission or revelation of its contents in any manner to an unauthorized person is prohibited by law.

SECRET

SECRET

DETACHABLE ABSTRACT CARDS

The abstract cards detached from this document are located as follows:

s:

1. 2.

3. 4.

Signed: Date:

SECRET

SECRET

NRL Report

NRL Report 5881

MADRE EVALUATION REPORT VII

[UNCLASSIFIED TITLE]

**DETECTION OF A SUBMARINE-LAUNCHED
POLARIS MISSILE VIA THE E-LAYER**

[SECRET TITLE]

S. R. Curley, W. C. Headrick, J. M. Headrick,
F. H. Utley, J. L. Ahearn, and G. A. Skaggs

Radar Techniques Branch
Radar Division

January 22, 1963



U. S. NAVAL RESEARCH LABORATORY
Washington, D.C.

SECRET

SECRET

ABSTRACT

[Secret]

On May 11, 1962, a Polaris missile, Type A2PE, was launched from a submarine near Cape Canaveral. The Madre radar, located at the Chesapeake Bay Annex of the Naval Research Laboratory, detected the missile from over the horizon during the last twelve seconds before thrust termination. Although backscatter returns were present from both E- and F-layer propagation, a comparison of the measured slant range and the true range, calculated from postflight data, showed that the only possible path was via E-layer.

PROBLEM STATUS

This is an interim report on one phase of the problem; work is continuing on this and other phases.

AUTHORIZATION

**NRL Problem R02-23
Project RF 001-02-41-4007
MIPR-30-635-8-160-6136**

Manuscript submitted November 16, 1962.

SECRET

SECRET

MADRE EVALUATION REPORT VII
[Unclassified Title]

DETECTION OF A SUBMARINE-LAUNCHED
POLARIS MISSILE VIA THE E-LAYER
[Secret Title]

Madre is a high-frequency, high-power, coherent, doppler radar located at the Chesapeake Bay Annex of the U. S. Naval Research Laboratory. It has been in operation for several months and has been used to detect rocket-powered missile launches from the Atlantic Missile Range (AMR).

In ordinary use, Madre's energy is refracted by the ionosphere (F layer) so that it illuminates the missile path close to the launch site, and below-the-horizon detection can be obtained. Attempts to illuminate the launch site itself via F-layer propagation during a launch have been unsuccessful to date because of the proximity of the Madre site to AMR launch sites (1200 km): that is, the combination of the current low sunspot period (or low ionospheric electron density) and the minimum-frequency capability of Madre has resulted in placement of one-hop energy beyond the site. However, under normal day-time ionospheric conditions, the energy can be made to intercept some portion of the trajectory of a missile close to the launch site. On a number of occasions missiles have been detected and identified as missiles when they were as low as 80 km altitude. A line-of-sight path from the Madre site would place a beam about 130 km over the launch site.

Details of the Madre radar can be found in a number of publications. One of these is NRL Memo. Report 1251, Dec. 1, 1961, "A Madre Evaluation Report" (Secret Report, Unclassified Title). For the purpose of affording a better understanding of the figures, a partial description of the system will be given here.

The received signals are synchronously detected and then passed through a set of comb rejection filters which reject the ordinary backscatter clutter by rejecting the repetition - rate frequency and all of its harmonics plus a few cycles on either side of these frequencies. The doppler frequency from each target will appear around zero frequency and around the repetition-rate frequency and its harmonics. Also, although recede and approach doppler frequencies can be resolved, this was not done for the test in this report; therefore, around zero frequency and around the repetition-rate frequency and its harmonics, both increasing and decreasing dopplers can appear.

The repetition rate for the test in this report was 90 cps. In Fig. 1, only the doppler frequency associated with zero frequency appears, since only zero to 45 cps are displayed. In Fig. 2, where zero to 90 cps are displayed, the increasing doppler associated with zero frequency and the decreasing doppler associated with 90 cps are displayed. The missile was known to be receding at the time.

The pertinent parameters for the Madre radar during this test were as follows:

Frequency	23.1 Mc
Repetition Rate	90 pps
Power Radiated	60 kw (average)
Pulse Width	500 μ sec
Antenna Gain	15 db one way
Antenna Bearing	190 degrees.

SECRET

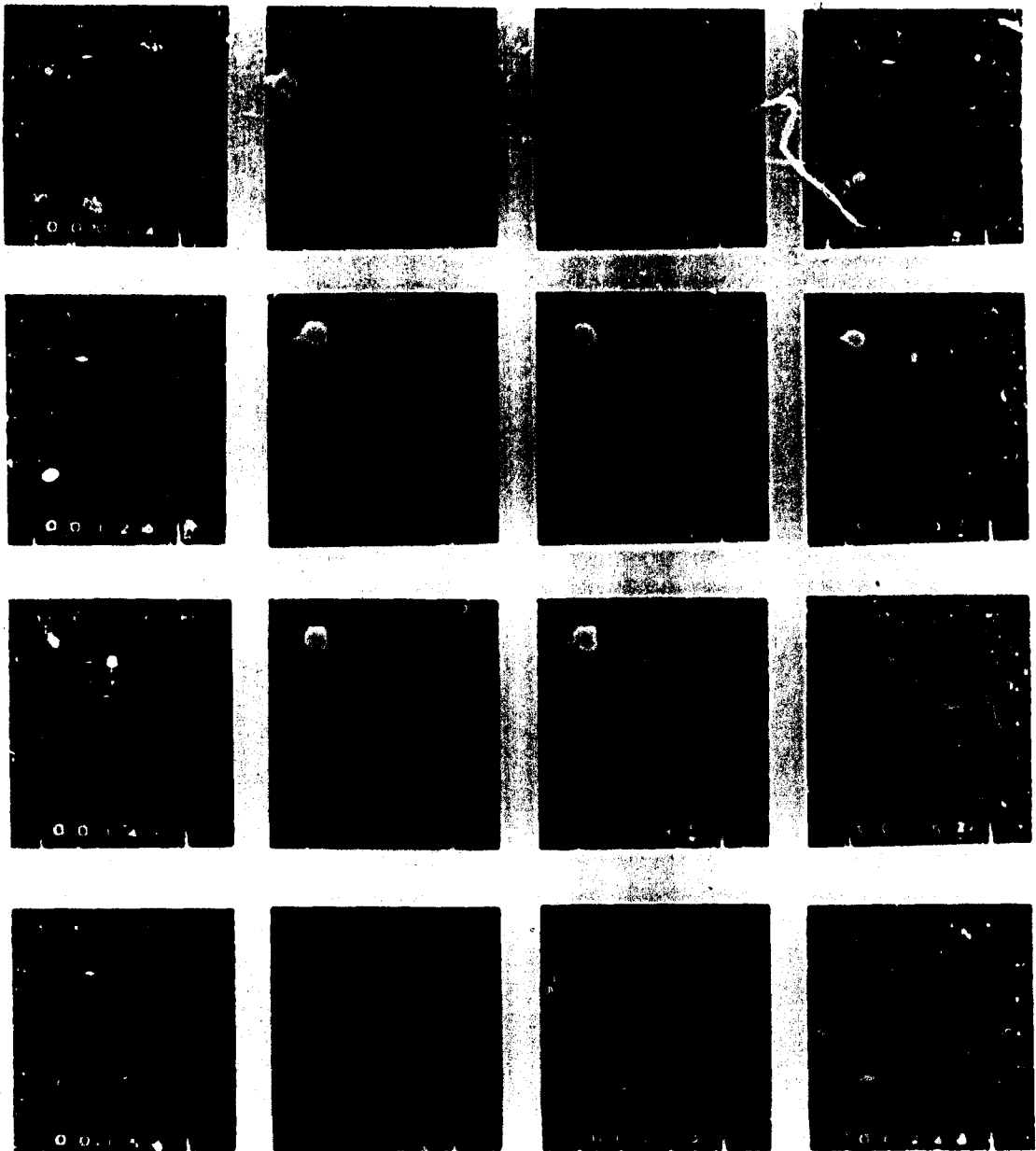


Fig. 1 - Consecutive photographs of the Madre real-time display shortly after launch. The appropriate ordinate is at the left and represents the doppler frequency in cycles per second. The abscissa is at the top and represents slant range in naut mi. The system calibration signal is located at 610 naut mi in range and at 40 cps in doppler. The bright spot in the upper left hand corner in frames 6 to 11 is a light leak. Time is indicated at the bottom of each frame. The missile signature appears in the sixth frame at 0.75 naut mi range and at 30 cps doppler and disappears by frame 13.



Fig. 2 - Vibragraph showing the doppler frequencies versus time of the signature obtained from AMR test 3001. The ordinate represents frequency in cycles per second. The abscissa represents the time in seconds after launch.

AMR Test No. 3001 (formerly AMR Test No. 0081) was a submarine-launched Polaris missile, type A2PE-4. It was launched on May 11, 1962, at 1826 Z. Postflight data did not give the thrust termination time nor height, but preflight data gave these as $T_0 = 105$ sec and 103 km.

Ionogram information transmitted over the Teepee net before launch time indicated strong E-layer blanketing. Backscatter returns from the direction of the launch site indicated both E and F propagation. Figure 3 is a photograph of backscatter returns on the Madre receiver i-f shortly after launch. Total sweep time corresponds to 3600 naut mi. The first patch of backscatter appears between 450 and 1300 naut mi and is undoubtedly due to the sporadic E indicated by the ionograms. The second patch of backscatter runs from about 1500 to 1800 naut mi and is undoubtedly due to F layer. The remainder of the backscatter is second-hop F layer.

Figure 4 is the ionogram received from the SRI OHD Data Center. Using this ionogram and the secant relationship, and extrapolating to the operating frequency of 23.1 Mc, backscatter can be expected to appear between 496 and 1240 naut mi from the sporadic E layer, and between 1480 and 1900 naut mi for the F layer.

It should be pointed out here that the present Madre positionable antenna imposes limitations in determining the direction from which the backscatter returns originate. The antenna beamwidth is approximately 40 degrees, which in itself is a limiting factor. In addition, the antenna cannot be rotated when radiating full power. Because of time limitations, it is rarely desirable to go through a detailed procedure of fixing the directions from which the various patches of backscatter reach their maxima. During a countdown, conditions often change radically, and sometimes there is a question as to whether or not the preflight missile trajectory is being illuminated. Also, with the present Madre radar complex a frequency shift is a time-consuming operation, so that where backscatter returns indicate that a frequency shift is desirable, the time required may be considered prohibitive, especially if the countdown has proceeded to a late stage. It is emphasized that these difficulties are not inherent. Such equipment limitations exist in the interest of economy.

Just before T_0 , an equipment failure caused Madre to shut down, and it was not operating again until $T_0 + 83$ sec.

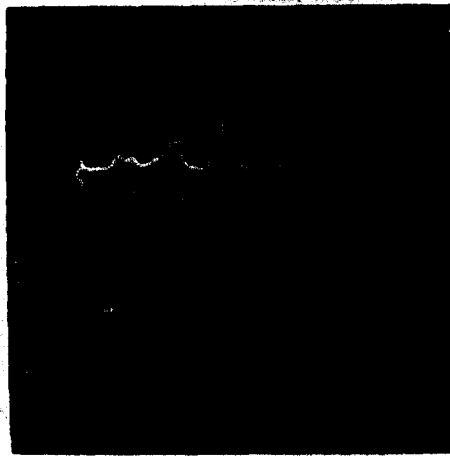


Fig. 3 - Amplitude versus range presentation of the backscatter returns at the 509-ke (shortly after launch). The amplitude (ordinate) scale is relative. The range (abscissa) scale represents 3600 naut mi of slant range. The signal near zero range represents one or more local clutter targets. Backscatter returns via E-layer propagation at 450 naut mi and end at 1300 naut mi. Backscatter returns via F-layer propagation at 1500 naut mi and end near 1800 naut mi. The backscatter returns beyond 1800 naut mi are due to second-hop F-layer propagation.

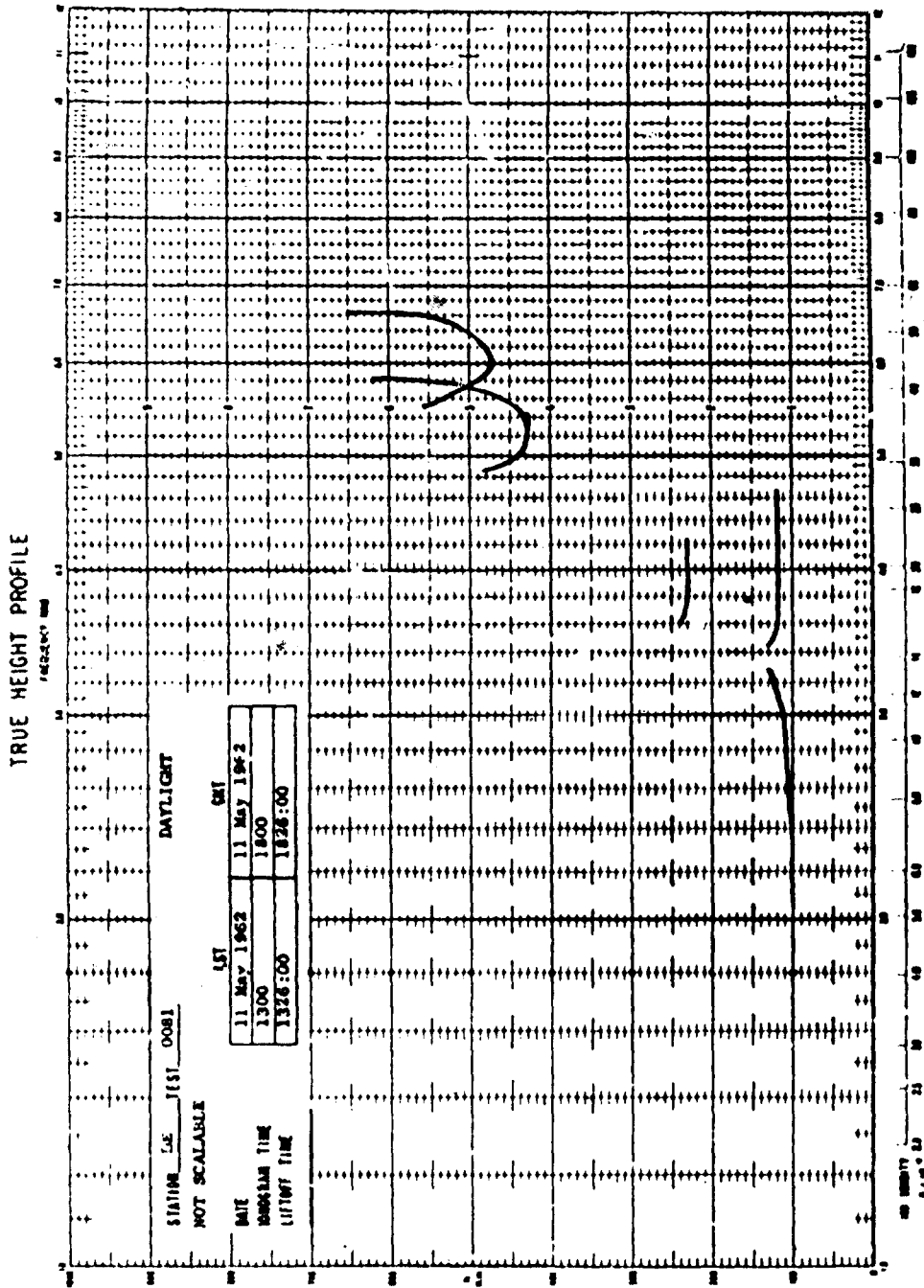


Fig. 4 - Ionogram received from SRI. The ordinate represents virtual height in kilometers. The abscissa represents frequency in megacycles per second.

In Fig. 1 are consecutive photographs of the Madre real-time display during the launch period. For this case the ordinate is on the left of each picture and the abscissa is at the top. The ordinate represents the doppler frequencies in cycles per second. Since the repetition rate during the test was 90 cps, only 45 cps of unambiguous doppler frequencies are available. The abscissa represents the range in nautical miles. At the bottom of each picture is given the time after T_0 in minutes and seconds; for example, 00034 is $T_0 + 34$ seconds, while 00134 is $T_0 + 1$ minute and 34 seconds. At the time the pictures were taken, the timer had a constant error of four seconds, so four seconds should be added to each time indication to give the correct time. The persistent signal at an indicated range of 610 naut mi and at 40 cps doppler frequency is the system calibration signal. Its amplitude is one microvolt peak to peak at the receiver input, and the true range is 600 naut mi. Therefore all targets will be displaced by 10 naut mi from the indicated range. The large bright signal in the upper left-hand corner from the 6th frame to the 11th frame is a light leak from the photograph equipment.

The target is first seen in the sixth frame at 675 naut mi and at 39 cps doppler; the time is 1 minute 30 seconds. With the indicated corrections inserted, the time would be $T_0 + 1$ minute 34 seconds at 665 naut mi. A calculation made from the postflight data places the missile at an altitude of 80 km at this time. The target grows in intensity and spreads out in doppler in the succeeding frames. It is finally gone in frame 13, so the target disappears between $T_0 + 1$ minute 56 seconds and $T_0 + 2$ minutes. According to preflight data, the target was to burn out $T_0 + 1$ minute 45 seconds. The integration time of the Madre analysis system accounts for the persistence of the signal after this time.

Figure 2 is a vibrogram of the same signal taken from the receiver output before passing through the Madre analysis system. The ordinate is frequency and the abscissa is time. Recede and approach dopplers are not resolved here, so both decreasing and receding dopplers will appear and be symmetrical around 45 cps. The straight lines appearing at 30 cps and 60 cps are the usual 60-cps lines caused by the equipment: the former is the 60 cps related to the repetition rate, and the latter is the 60-cps line related to zero frequency, since the 60-cps line will appear on both sides of the repetition rate and its harmonics.

The target first appears at $T_0 + 92$ seconds as a discrete signal (Fig. 2), then spreads out in frequency until it disappears abruptly at $T_0 + 104$ seconds. This is the time of thrust termination predicted from preflight data. At $T_0 + 92$ seconds, the missile is 80 km in altitude. The range of this signal was determined to be 665 ± 5 naut mi, from the A-scope presentation.

The altitudes of the missile for the duration of the signal are well below line of sight from the Madre location, so the signal was obtained via refraction. From the ionogram it is evident that the normal E layer, located at 100-km height, could not be the main refracting medium, since (a) it is too low in height and (b) it is too low in electron density for 23.1 Mc. Over the past year Madre backscatter returns have been compared many times with current ionograms from various locations, and E-layer returns are never present (at any Madre frequency) whenever the F-layer frequency is below 3.5 Mc. The same studies show, however, that E-layer returns are almost always present at all Madre frequencies (13.5 to 27 Mc) whenever the E-layer frequency exceeds 4.5 Mc. Figure 4 shows that the sporadic E fits this case and that its height is adequate to account for the signal obtained. F-layer returns are from far beyond the missile position and cannot account for the signature.

Although this is the first report dealing with a Polaris detection from Madre radar, it is not the first or the only Polaris detection made by Madre. It was felt that the mode of propagation, via sporadic E, justified a detailed treatment of this particular test.

Madre has obtained a Polaris signature for every occasion on which the backscatter indicated that the powered portion of the trajectory was being illuminated. In all, ten detections have been made, in which the Polaris has been at various altitudes from 80 km to the thrust-termination altitude. Discrete doppler information has been extracted for those cases where the detection was made below 95 km, thus indicating the missile velocity at the time of the signature. The potential for extracting discrete doppler information for other types of missiles has been demonstrated.

These tests and others, including all types of missiles launched from AMR, will be included in a report which is now in preparation.

DISTRIBUTION

	<u>Cy. Nos.</u>
Dir., Advanced Research Projects Agency, Wash. 25, D.C.	1 - 4
Dir., Weapons System & Evaluation Grp., Rm. 1E880, The Pentagon, Wash. 25, D.C. Attn: Mrs. Sjogven	5 - 6
NBS, US Dept. of Commerce, Wash. 25, D.C. Attn: Mr. L. E. Tveten	7
Dir., National Security Agency, Wash. 25, D.C.	8
CO, USNavOrdTestU, Patrick AFB, Fla. Attn: CDR R. E. Colopy	9
Dir., USNEL, San Diego 52, Calif.	10
Chief of Naval Research, Dept. of the Navy, Wash. 25, D.C. Attn: Code 427	11
463	12
418	13
Chief of Naval Operations, Dept. of the Navy, Wash. 25, D.C. Attn: OP-92	14 - 17
OP-30	18
OP-70	19
OP-71	20
OP-07T	21
OP-03EG	22
Chief, BuShips, Dept. of the Navy, Wash. 25, D.C.	23
Dir., Special Projects Div., Dept. of the Navy, Wash. 25, D.C.	24
Dir. of Defense (R&E), Dept. of Defense, Wash. 25, D.C. Attn: Air Defense	25 - 26
CO, USNATC, Patuxent River NAS, Patuxent River, Md. Attn: Mr. D. Decker	27
CO, USNOL, Corona, Calif. Attn: Mr. V. Hildebrand	28
CDR, Naval Missile Center, Point Mugu, Calif. Attn: Technical Library, Code NO3022	29 - 30
CO, US Army Signal Radio Propagation Agency, Ft. Monmouth, N.J. Attn: SIGRP-A	31

DISTRIBUTION (Continued)

	<u>Cy. Nos.</u>
CDR, Army Rocket & Guided Missile Agency, Huntsville, Ala.	32
CG, Picatinny Arsenal, Technical Research Section AAWL, Dover, New Jersey Attn: Dr. Davis	33
Office, Dir. of Defense (R&E), Office of Electronics, Rm. 301033, The Pentagon Attn: Mr. J. J. Donovan	34
CO, US Army Signal Electronic Research Unit, P.O. Box 205, Mountain View, Calif.	35
Hdqs., USAF, Office Asst. Chief of Staff, Wash. 25, D.C. Attn: MAJ A. T. Miller	36
Hdqs., USAFCRLabs, Hanscom Field, Bedford, Mass. Attn: CRRK, Dr. Phillip Newman	37
CRRI, Mr. Wm. F. Ring	38
ESRDT, Mr. Harry Byram, Electronic Systems Div.	39
CDR, RADC, Griffiss AFB, New York Attn: RALTT, Mr. F. Bradley	40
RCLTS, Mr. T. Maggio	41
CDR, Air Technical Intelligence Center, USAF, Wright-Patterson AFB, Ohio Attn: Dr. P. J. Overbe	42
Mr. Goff	13
Hdqs., USAF, Dept. of the Air Force, Office for Atomic Energy DCS/O, Washington 25, D.C.	44
Hdqs., USAF, Wash. 25, D.C. Attn: AFDRD-GW	45
Hdqs., Offutt AFB, Nebraska Attn: Strategic Air Command	46
CDR, Air Force Ballistic Missile Div., Air Force Unit Post Office, Los Angeles 45, Calif.	47
Hdqs., North American Air Defense Command, Ent AFB, Colorado Springs, Colo. Attn: NELC (Advanced Projects Group)	48
ADLAN Section	49
Dir. of Communications & Electronics, Ent AFB, Colorado Springs, Colo. Attn: ADOAC-DL, ADC	50
Electro-Physics Labs., ACF Electronics Div., 3355 - 52nd Ave., Hyattsville, Md. Attn: Mr. W. T. Whelan	51

DISTRIBUTION (Continued)

	<u>Cy. Nos.</u>
Stanford Electronics Lab., Stanford Univ., Stanford, Calif. Attn: Dr. O. G. Villard	52
Raytheon Mfg. Co., Wayland Lab., Waltham, Mass. Attn: Mr. D. A. Hedlund	53
General Electric Co., Court St., Syracuse, N.Y. Attn: Dr. G. H. Millman	54
Lockheed Aircraft Corp., Calif. Div., Burbank, Calif. Attn: Mr. R. A. Bailey	55
Pilotless Aircraft Div., Boeing Airplane Co., Seattle 24, Wash. Attn: Mr. F. S. Holman	56
The Martin Co., Baltimore 3, Md. Attn: Dr. D. M. Sukhia	57
Radio Corp. of America, Aerospace Comm. & Controls Div., Burlington, Mass. Attn: Mr. J. Robinovitz	58
MIT, Lincoln Labs., Box 73, Lexington 73, Mass. Attn: Dr. J. H. Chisholm (Radio Prop. Group) Mr. Melvin Stone	59 60
The Penna. State Univ., University Park, Pa. Attn: Mr. H. D. Rix	61
The Rand Corp., 1760 Main St., Santa Monica, Calif. Attn: Dr. Cullen Crain	62
Bendix Systems Div., The Bendix Corp., 3300 Plymouth Road, Ann Arbor, Mich. Attn: Mr. C. M. Shaar (Assoc. Dir. of Engr.)	63
Smyth Research Associates, 3555 Aero Court, San Diego 11, Calif. Attn: Mr. Steven Weisbrod	64
Convair Div. of General Dynamics, 3165 Pacific Coast Highway, San Diego 12, Calif. Attn: Dr. Bond	65
Stanford Research Institute, Menlo Park, Calif. Attn: Mr. L. T. Dolphin, Jr.	66 - 67
Thompson Ramo-Wooldridge, Inc., Box 90534 Airport Station, Los Angeles, Calif. Attn: Tech. Info. Services	68
APL/SHU, 8621 Ga. Ave., Silver Spring, Md. Attn: Mr. G. L. Seielstad (NavOrd 7386)	69

DISTRIBUTION (Continued)

	<u>Cy. Nos.</u>
Chief, Army Security Agency, Arlington Hall Station, Arlington 12, Va.	70
Aircraft Instruments Laboratory, Melville, L.I., New York Attn: Mr. Scott F. Hall	71
Analytic Services, Inc., 5202 Leesburg Pike, Alexandria, Va. Attn: Mr. Ray Timm	72
CinC, NORAD, Ent AFB, Colorado Springs, Colo. Attn: LCOL M. R. Cripe, Hdq. NPD-A, Box 42	73
Hdqs., USAF, Systems Command, Bolling AFB, Wash. 25, D.C. Attn: LCOL R. M. Cosel, AFDRT	74
Dir., National Security Agency, Fort George G. Meade, Md. Attn: C3/TDL	75
Westinghouse Electric Corp., Defense Center-Baltimore, Technical Information Center, P.O. Box 1693, Baltimore, Md.	76
Institute of Science & Technology, The Univ. of Michigan, P.O. Box 618, Ann Arbor, Mich. Attn: BAMIRAC-ad	77
Systems Branch, US Army Scientific Liaison & Advisory Group, P.O. Box 7157 Apex Station, Wash. 4, D.C. Attn: Mr. Richard A. Krueger	78
Aero Geo Astro Corp., P.O. Box 1002, Edsall & Lincolnia Roads, Alexandria, Va.	79
Dir., DASA Data Center, P.O. Drawer QQ, Santa Barbara, Calif.	80
Chief, Radar Development Branch, US Army Signal Research & Development Laboratory, Belmar, New Jersey Attn: Mr. R. Dunn, Surveillance Dept., Evans Area	81
ASTIA, Arlington, Va. Attn: TIPDR	82 - 91

<p style="text-align: center;">SECRET</p> <p>Naval Research Laboratory Report 5681 SECRET MADRE EVALUATION REPORT VII Unclassified Title by S.R. Curley, W.C. Headrick, J.M. Headrick, F.H. Utley, J.L. Abrams, and G.A. Staggs. 11 pp. and figs. January 22, 1963</p> <p>On May 11, 1962, a Polaris missile, Type AZPE, was launched from a submarine near Cape Canaveral. The Madre radar, located at the Chesapeake Bay Annex of the Naval Research Laboratory, detected the missile from over the horizon during the last twelve seconds before thrust termination. Although backscatter returns were present from both E- and F-layer propagation, a comparison of the measured slant range and the true range, calculated from postflight data, showed that the only possible path was via E-layer. (Secret Abstract)</p> <p style="text-align: center;">SECRET</p>	<p>I. Ballistic missiles - Launching - Radar analysis Polaris AZPE</p> <p>II. MADRE</p> <p>III. Curley, S. R.</p> <p>IV. Headrick, W. C.</p> <p>V. Headrick, J. M.</p> <p>VI. Utley, F. H.</p> <p>VII. Abrams, J. L.</p> <p>VIII. Staggs, G. A.</p>	<p>I. Ballistic missiles - Launching - Radar analysis Polaris AZPE</p> <p>II. MADRE</p> <p>III. Curley, S. R.</p> <p>IV. Headrick, W. C.</p> <p>V. Headrick, J. M.</p> <p>VI. Utley, F. H.</p> <p>VII. Abrams, J. L.</p> <p>VIII. Staggs, G. A.</p>
<p style="text-align: center;">SECRET</p> <p>Naval Research Laboratory Report 5681 SECRET MADRE EVALUATION REPORT VII Unclassified Title by S.R. Curley, W.C. Headrick, J.M. Headrick, F.H. Utley, J.L. Abrams, and G.A. Staggs. 11 pp. and figs. January 22, 1963</p> <p>On May 11, 1962, a Polaris missile, Type AZPE, was launched from a submarine near Cape Canaveral. The Madre radar, located at the Chesapeake Bay Annex of the Naval Research Laboratory, detected the missile from over the horizon during the last twelve seconds before thrust termination. Although backscatter returns were present from both E- and F-layer propagation, a comparison of the measured slant range and the true range, calculated from postflight data, showed that the only possible path was via E-layer. (Secret Abstract)</p> <p style="text-align: center;">SECRET</p>	<p>I. Ballistic missiles - Launching - Radar analysis Polaris AZPE</p> <p>II. MADRE</p> <p>III. Curley, S. R.</p> <p>IV. Headrick, W. C.</p> <p>V. Headrick, J. M.</p> <p>VI. Utley, F. H.</p> <p>VII. Abrams, J. L.</p> <p>VIII. Staggs, G. A.</p>	<p>I. Ballistic missiles - Launching - Radar analysis Polaris AZPE</p> <p>II. MADRE</p> <p>III. Curley, S. R.</p> <p>IV. Headrick, W. C.</p> <p>V. Headrick, J. M.</p> <p>VI. Utley, F. H.</p> <p>VII. Abrams, J. L.</p> <p>VIII. Staggs, G. A.</p>

MEMORANDUM

20 February 1997

Subj: Document Declassification

Ref: (1) Code 5309 Memorandum of 29 Jan. 1997
(2) Distribution Statements for Technical Publications
NRL/PU/5230-95-293

Encl: (a) Code 5309 Memorandum of 29 Jan. 1997
(b) List of old Code 5320 Reports
(c) List of old Code 5320 Memorandum Reports

1. In Enclosure (a) it was recommended that the following reports be declassified, four reports have been added to the original list:

Formal: 5589, 5811, 5824, 5825, 5849, 5862, 5875, 5881, 5903, 5962, 6015, 6079, 6148, 6198, 6272, 6371, 6476, 6479, 6485, 6507, 6508, 6568, 6590, 6611, 6731, 6866, 7044, 7051, 7059, 7350, 7428, 7500, 7638, 7655. Add 7684, 7692.

Memo: 1251, 1287, 1316, 1422, [redacted], 1500, 1527, 1537, 1540, 1567, 1637, 1647, 1727, 1758, 1787, 1789, 1790, 1811, 1817, 1823, 1885, 1939, 1981, 2135, 2624, 2701, 2645, 2721, 2722, 2723, 2766. Add 2265, 2715.

The recommended distribution statement for the these reports is: **Approved for public release; distribution is unlimited.**

2. The above reports are included in the listings of enclosures (b) and (c) and were selected because of familiarity with the contents. The rest of these documents very likely should receive the same treatment.

J. M. Headrick
J. M. Headrick
Code 5309

Copy:

Code 1221
Code 5300
Code 5320
Code 5324

— *CR OK 7/2/97* —