

UNCLASSIFIED

AD NUMBER	
AD340089	
CLASSIFICATION CHANGES	
TO:	unclassified
FROM:	secret
LIMITATION CHANGES	
TO:	Approved for public release, distribution unlimited
FROM:	Distribution authorized to DoD and DoD contractors only; Foreign Government Information; 30 NOV 1983. Other requests shall be referred to British Embassy, 3100 Massachusetts Avenue, NW, Washington, DC 20008.
AUTHORITY	
DSTL, WO 189/369, 5 Aug 2008; DSTL, WO 189/369, 5 Aug 2008	

THIS PAGE IS UNCLASSIFIED

UNCLASSIFIED

AD NUMBER
AD340089
NEW LIMITATION CHANGE
TO Distribution authorized to DoD and DoD contractors only; Foreign Government Information; 30 NOV 1983. Other requests shall be referred to British Embassy, 3100 Massachusetts Avenue, NW, Washington, DC 20008.
FROM Distribution authorized to DoD only; Foreign Government Information; 25 FEB 1963. Other requests shall be referred to British Embassy, 3100 Massachusetts Avenue, NW, Washington, DC 20008.
AUTHORITY
British Embassy Notice dtd 30 Nov 1983

THIS PAGE IS UNCLASSIFIED

SECRET

AD 340089L

DEFENSE DOCUMENTATION CENTER

FOR

SCIENTIFIC AND TECHNICAL INFORMATION

CAMERON STATION, ALEXANDRIA, VIRGINIA



SECRET

NOTICE: When government or other drawings, specifications or other data are used for any purpose other than in connection with a definitely related government procurement operation, the U. S. Government thereby incurs no responsibility, nor any obligation whatsoever; and the fact that the Government may have formulated, furnished, or in any way supplied the said drawings, specifications, or other data is not to be regarded by implication or otherwise as in any manner licensing the holder or any other person or corporation, or conveying any rights or permission to manufacture, use or sell any patented invention that may in any way be related thereto.

NOTICE:

THIS DOCUMENT CONTAINS INFORMATION
AFFECTING THE NATIONAL DEFENSE OF
THE UNITED STATES WITHIN THE MEAN-
ING OF THE ESPIONAGE LAWS, TITLE 18,
U.S.C., SECTIONS 793 and 794. THE
TRANSMISSION OR THE REVELATION OF
ITS CONTENTS IN ANY MANNER TO AN
UNAUTHORIZED PERSON IS PROHIBITED
BY LAW.

SECRET

P.T.P. 848

P.T.P. 848

CATALOGED BY DDC 340089
AS AD NO. 340089

340089L

Copy No. 57

PORTON TECHNICAL PAPER No. 848

THE DETECTION OF ANTICHOLINESTERASE AGENTS
USING AN ENZYME INHIBITION REACTION [U]

PART VIII.
DEVELOPMENT OF A PORTABLE AUTOMATIC ALARM
(MODEL VIII)

THIS IS NOT TO BE USED FOR OFFICIAL USE
OR FOR DISCLOSURE TO ANY
ANY OTHER WAY WOULD BE A BREACH OF THIS
CONFIDENTIALITY

2. THE INFORMATION SHOULD BE SAFEGUARDED UNDER
RULES DESIGNED TO MAINTAIN THE SAME STANDARD OF
SECURITY AS THAT MAINTAINED BY HER MAJESTY'S
GOVERNMENT IN THE UNITED KINGDOM

A.M. KINNEAR

3. THE INFORMATION CONTAINED IN THIS DOCUMENT
SHOULD NOT BE CIRCULATED OUTSIDE GOVERNMENT
DEPARTMENTS WITHOUT THE PRIOR PERMISSION OF THE
MINISTRY OF AVIATION

4. THE RECIPIENT IS WARNED THAT INFORMATION
CONTAINED IN THIS DOCUMENT MAY BE SUBJECT TO
PRIVATELY OWNED RIGHTS

DDC
RECORDED
AUG 26 1963
RESULTS
TISA D

CHEMICAL DEFENCE EXPERIMENTAL ESTABLISHMENT

Porton, Wilts.

EXCLUDED FROM AUTOMATIC
REGRADING: DOD DIR 5200.10
DOES NOT APPLY

SECRET

SECRET

THIS DOCUMENT IS THE PROPERTY OF H.B.M. GOVERNMENT,
and is issued for the information only of those
officials who are concerned with its contents.

The official in possession of the document will be
responsible for its safe custody and when not in use it
is to be kept under lock and key.

"This document contains information affecting the National
Defense of the United States within the meaning of the
Espionage Laws, Title 18, Sections 793 and
794, its transmission or the revelation of its contents
in any manner to an unauthorized person is prohibited
by law."

SECRET

PORTON TECHNICAL PAPER NO. 848
COPY NO. 57
DATE: 25th February, 1963

THE DETECTION OF ANTICHOLINESTERASE AGENTS USING AN
ENZYME INHIBITION REACTION

PART VIII. DEVELOPMENT OF A PORTABLE AUTOMATIC ALARM (MODEL VIII)

by

A.M. KINNEAR

SUMMARY

A portable automatic alarm (Model VIII) has been designed for the detection of anticholinesterases. It operates from a 24 volt battery at a power consumption of 12 watts, and, excluding the battery, measures 8 in. x 8 in. x 14 in. and weighs 18 lb.

The alarm utilises the enzyme inhibition reaction, the enzyme being pseudo-cholinesterase obtained from horse serum. Three different reagent solutions are required, and these are used in a continuous flow system with continuous sampling of the suspect atmosphere. A photoelectric monitoring of the colour density of the reaction product activates the alarm system when the colour density is decreased.

In preliminary experiments in the gas chambers the alarm responded to 0.015 µg/l. of GB within fifteen seconds.

It is anticipated that this design of alarm may be applicable in principle to other chemical detection systems employing one or more reagent solutions, and in which detection occurs as the result of a change in colour density of the reaction product.

(Sgd.) T.F. Watkins,
Supt., Chemistry Research Division.

(Sgd.) A.S.G. Hill,
Deputy Director.

AMK/MEF

SECRET

SECRET

PORTON TECHNICAL PAPER NO. 848

COPY NO. 57

DATE: 25th February, 1963

THE DETECTION OF ANTICHOLINESTERASE AGENTS USING AN
ENZYME INHIBITION REACTION

PART VIII. DEVELOPMENT OF A PORTABLE AUTOMATIC ALARM (MODEL VIII)

by

A.M. KINNEAR

1. INTRODUCTION

An earlier form of Automatic Alarm (Model VII) for detecting anticholinesterases in the atmosphere has been described previously (1). The enzyme inhibition reaction was used with solutions of horse serum pseudo-cholinesterase, guaiacyl butyrate (substrate) and Brentamine Fast Red B Salt* (colour developer to produce a colour with any liberated guaiacol). Sampling and detection were carried on without interruption using a continuous liquid flow system. The alarm responded to concentrations of GB down to 0.01 µg/l. in 10-20 seconds; it was mains-operated, relatively bulky, and not portable.

The successful use of a continuous liquid flow system to give continuous detection with the enzyme inhibition reaction was sufficiently encouraging to warrant attempts to simplify, and to reduce the size and weight of the alarm in order to produce a portable, battery-operated model. In this development work, it was appreciated that some of the sensitivity of the alarm might have to be sacrificed, provided the time to respond to anticholinesterases was not increased.

The effort of modifying and simplifying the Model VII Alarm which led finally to the development of the portable, battery-operated Model VIII Alarm is described in this report.

*Stabilised diazotised 1-amino-2-methoxy-4-nitrobenzene.

SECRET

SECRET

2. GENERAL DESCRIPTION

A flow diagram of the Model VIII alarm is shown in Fig. 1 and photographs of the alarm are shown in Figs. 2-5. The alarm measures 8 in. x 8 in. x 14 in. and weighs 18 lb. The alarm is operated by a 24 volt battery carried separately from the alarm. The power consumption is 12 watts.

The atmosphere is sampled at 2 - 5 l./min using a vane type pump driven directly by a permanent magnet motor. The pump is also coupled to 500:1 reduction gearbox arranged to drive four peristaltic pumps (Figs. 8 and 9). Three of these, driven at about 6 r.p.m., pump the three reagent solutions (enzyme, substrate and colour developer) at 0.4 ml/min into the reaction tube while the fourth pump, driven slightly under 18 r.p.m., draws the reaction product from the separator annulus to the scanning cell.

The sample of air enters at high velocity into the narrow reaction tube (Figs. 1 and 6) where it immediately encounters a small flow of the enzyme solution which it propels as a film along the tube. It is at this stage that the first reaction of the chemical detection system begins, i.e. the inhibition of the enzyme if there is an anticholinesterase agent in the atmosphere.

After travelling successive short distances along the tube, the enzyme solution meets and blends with similar inflows of the substrate and colour developer, when the second and third reactions of the detection system commence.

The solution containing the final reaction product then enters the separator and collects in the annulus while the air passes on via a spray trap to the air pump. From the separator annulus, the liquid is drawn to the scanning cell, through the fourth peristaltic pump and to waste. To enable the reaction product to reach the scanning cell as quickly as possible, the liquid capacities of the separator, scanning cell, and connecting link are made as small as feasible.

SECRET

SECRET

Changes in colour density of the solution in the scanning cell are monitored by means of a light source, a matched pair of counterbalanced photocells and a sensitive meter relay. A small reduction in density suffices to close the alarm circuit. This arrangement dispenses with the need for a balancing circuit required when only one photocell is used and compensates for possible variations in light intensity.

The reaction tube terminates in a smooth "dural" block which comes into close contact with the back of the case and lines up with a hole admitting the air sample. The exhaust of the air pump is arranged to line up with another hole in the back of the case at a point remote from the sample inlet so as not to cause interference with the air sampling. For durability, the reagent containers are made of stainless steel. They can be moved aside to give access to the reagent pumps.

3. DETAILED DESCRIPTIONS

(a) Reaction tube design

Important factors involved in the design of the alarm are the flow rate of the liquid, the sampling rate of the air, the bore and length of the reaction tube, the minimum concentration of vapour to be detected, and the activity of the enzyme solution. For a given air flow, the velocity of the air stream and the liquid transfer rate will increase as the diameter of the tube is decreased. Thus the length of the tube will have to be increased when the diameter is decreased if constant reaction times are to be retained. A long narrow tube should be more effective than a shorter wider tube for absorbing C.W. agents from a contaminated air stream, but the narrow tube will offer a higher impedance to the air stream. With the limited amount of power available in a battery-operated portable alarm a satisfactory air flow can only be obtained by keeping the impedance of the tube within reasonable limits. Thus some compromise must be made regarding the dimensions of the reaction tubes.

SECRET

SECRET

As there are many possible variables to be considered, it is clear that mathematical calculation of the optimum tube dimensions would be complicated, and so the tube finally adopted in this model was chosen as a result of experiment.

The constructional details of this reaction tube are shown in Fig. 6.

(b) Separator Design

It is necessary to separate the liquid and the air emerging from the reaction tube by a single and continuous process so that the resultant reaction product may be drawn into the scanning cell in a suitable condition for continuous photoelectric monitoring.

One of the main problems in designing a separator was to ensure that a high proportion of the reaction product did not go to waste as spray. It was found that the most successful designs were those in which the "separated" liquid could be pumped to the scanning cell. Based on this experience, a successful separator (Figs. 1 and 6) was designed. In this design the air stream passed along an inner coaxial tube while the liquid was drawn into the annulus by capillary forces. An appreciably larger diameter is used for the inner coaxial tube compared with that of the reaction tube, so that the air velocity is reduced and the tendency for liquid to be drawn off with the air as spray is minimised.

In optimum conditions, the liquid is pumped from the annulus a little slower than it collects in order to avoid drawing air through the annulus. The slight excess of liquid is allowed to go to waste as spray. If the annulus liquid is pumped away too fast, air bubbles will pass through the scanning cell. A slight uniform axial flow of small bubbles through the cell, however, may be tolerated since they assist mixing and only scatter light away from the photocell. This will not cause false alarms when a decrease in colour density is being detected.

SECRET

SECRET

A very small annular clearance facilitates rapid transport of the reaction product to the scanning cell.

This type of separator was fabricated in metal and was made from stainless steel and German silver. The design finally selected could easily be dismantled for cleaning.

4. PREPARATION OF ALARM FOR SERVICE

Fill the reagent bottles, empty the waste receiver and spray trap, and ensure that the bulb in the scanning head is clean.

Connect to a 24-volt D.C. supply and switch on. Ascertain that the reagent pumps are functioning, and allow a few moments for expulsion of air pockets from the reagent feed lines. The solution in the scanning head should now be coloured distinctly purple.

If the illumination lamp has not been adjusted or if it has been replaced, adjust to give maximum light on the detecting photocell. Then adjust the iris diaphragm until the meter relay needle is in the vertical position. The needle should now remain steady until the enzyme becomes inhibited when it will be deflected to the left to close the alarm circuit.

5. OPERATION AND PERFORMANCE

The response time of the alarm appeared to be governed more by the rate of enzyme inhibition than by the rate of substrate hydrolysis. This was indicated by the fact that the response time decreased with increase in enzyme concentration until a point was reached beyond which no further decrease occurred, while increase in substrate concentration merely increased the colour intensity and did not significantly affect the response time. The response time was unaffected by variation in the concentration of the solution of the colour developer since this reaction is practically instantaneous. A slight excess of colour developer was used to allow for possible losses, for example, by decomposition.

SECRET

SECRET

The best results were obtained using the reagents in the following concentrations:

<u>Enzyme Solution:</u>	1,000 A.U.* (horse serum cholinesterase) in 1% aqueous borax solution.
<u>Substrate Solution:</u>	0.05 ml guaiacyl butyrate dissolved in 4 ml acetone and diluted to 100 ml with water.
<u>Colour Developer Solution:</u>	0.01 g Brentamine Fast Red B salt dissolved in 100 ml water.

The liquid reagents were used at a rate of approximately 0.4 ml/min. The air flow rate was 4 l./min. The alarm was capable of operating for 6-7 hours without attention.

Laboratory tests on the alarm were made by applying a GB contaminated glass stopper to the air intake for a second and noting the time required for the red signal lamp to light up. The detection times were mostly from 8 to 12 seconds and rarely outside the limits 5 and 15 seconds. It should be noted that the detection time is fixed within these close limits by the parameters of the alarm and is almost independent of GB concentration.

The sensitivity of the alarm was ascertained by operating it in known concentrations of GB in a gas chamber. Responses were obtained with all concentrations down to and including .015 µg/l.

Preliminary experiments with GA and VX indicate that for these two agents detection times may be more than 15 seconds.

It is anticipated that this design of alarm may be applicable in principle to other chemical detection systems employing one or more reagent solutions, and in which detection occurs as the result of a change in colour

*The activity unit (A.U.) is defined as the number of micro litres of CO₂ evolved in 30 min per mg dry enzyme preparation when tested by the Warburg method as modified by Strelitz (2).

SECRET

SECRET

density of the reaction product.

7. ACKNOWLEDGEMENTS

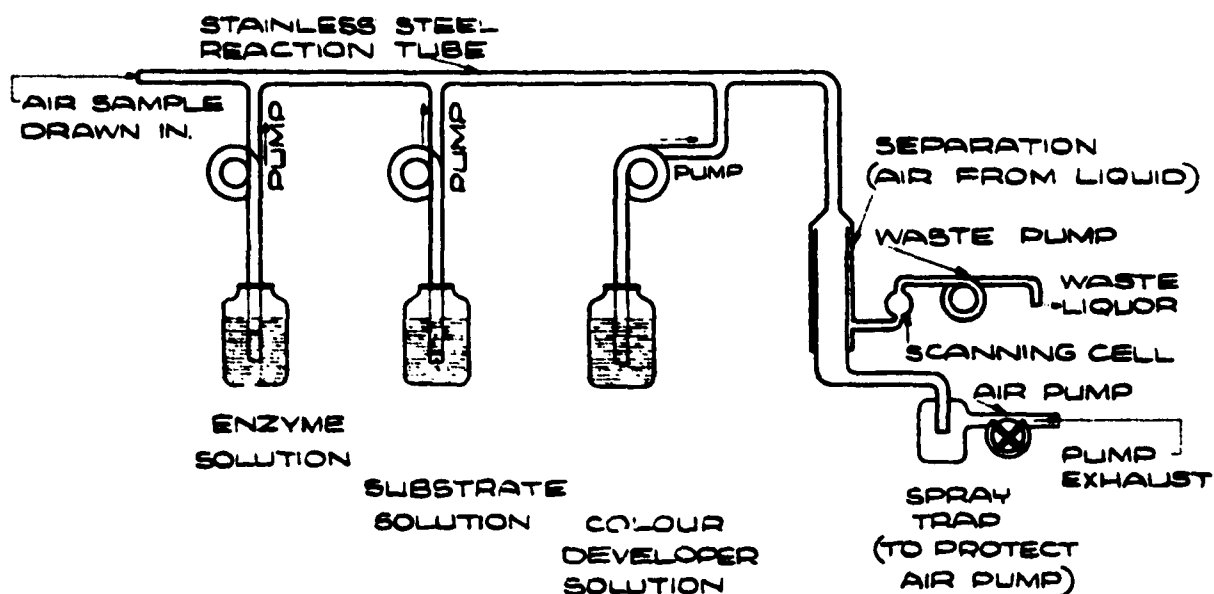
W.J. Emmens of the Engineering and Respirator Division gave valuable assistance in designing and constructing models throughout this work.

(Sgd.) T.F. Watkins,
Supt., Chemistry Research Division.

(Sgd.) A.S.G. Hill,
Deputy Director.

ANK/MEF

SECRET



THE AIR IS DRAWN AT 2-5 LITRES/MIN THROUGH REACTION TUBE. REAGENTS PASS AS LIQUID FILM ALONG WALL OF REACTION TUBE AND COLLECT IN ANNULUS IN THE SEPARATOR FROM WHERE THEY ARE PUMPED TO THE SCANNING CELL. THE AIR STREAM BRIDGES THE ANNULUS AND PASSES VIA A SPRAY TRAP TO THE AIR PUMP AND TO WASTE.

DIAGRAM OF MODEL 8 ALARM

FIG 1

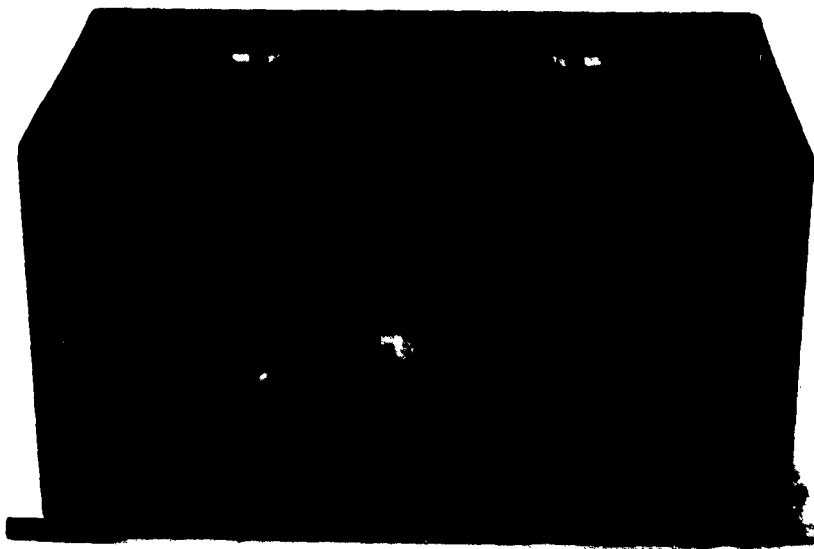


Fig.2.

F.896/2

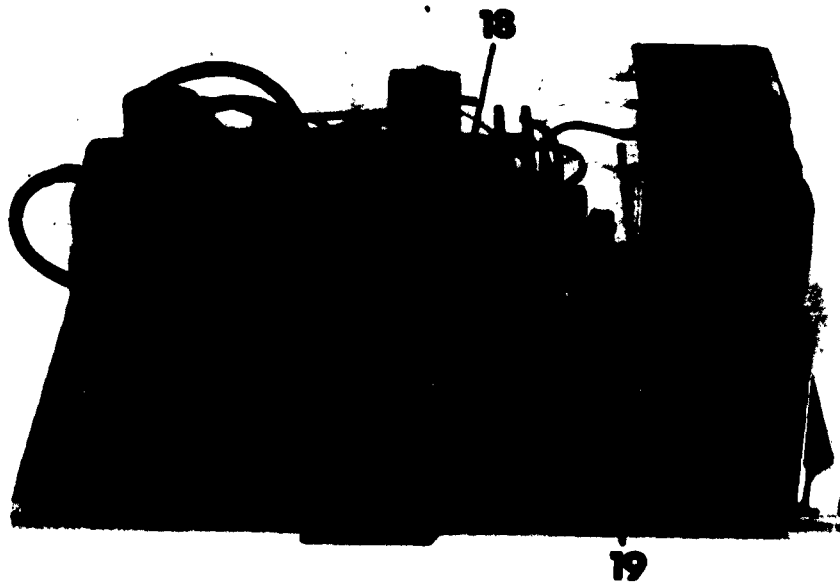
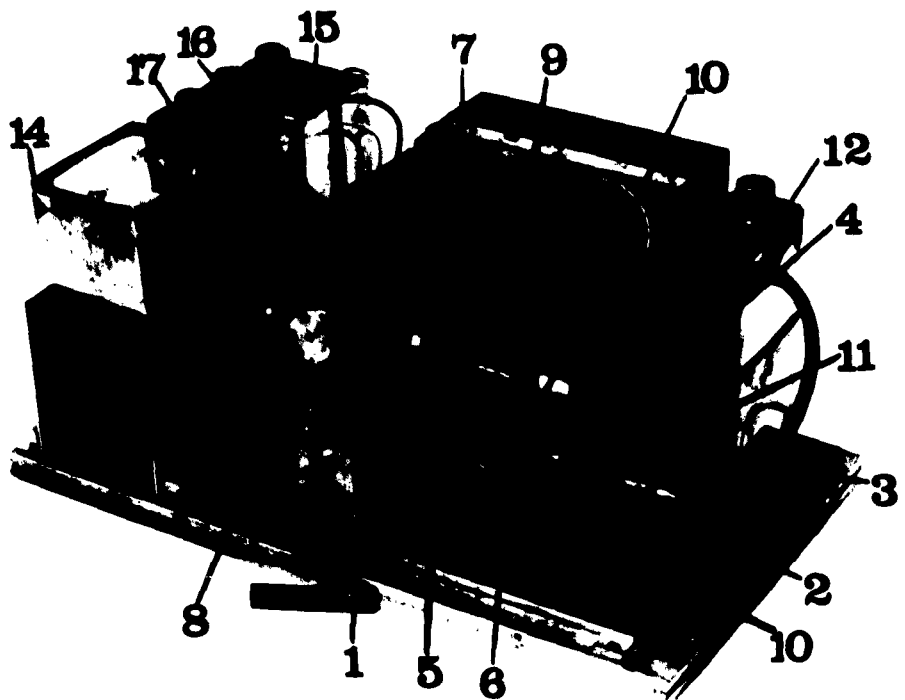


Fig.3.

Automatic Alarm Model 7

**1705/2
PTP848**





T1705/3

Fig 4

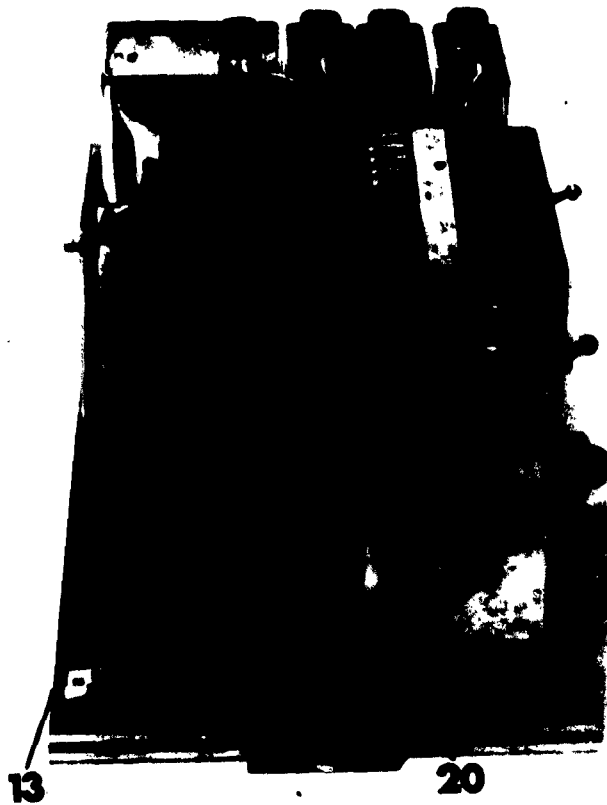


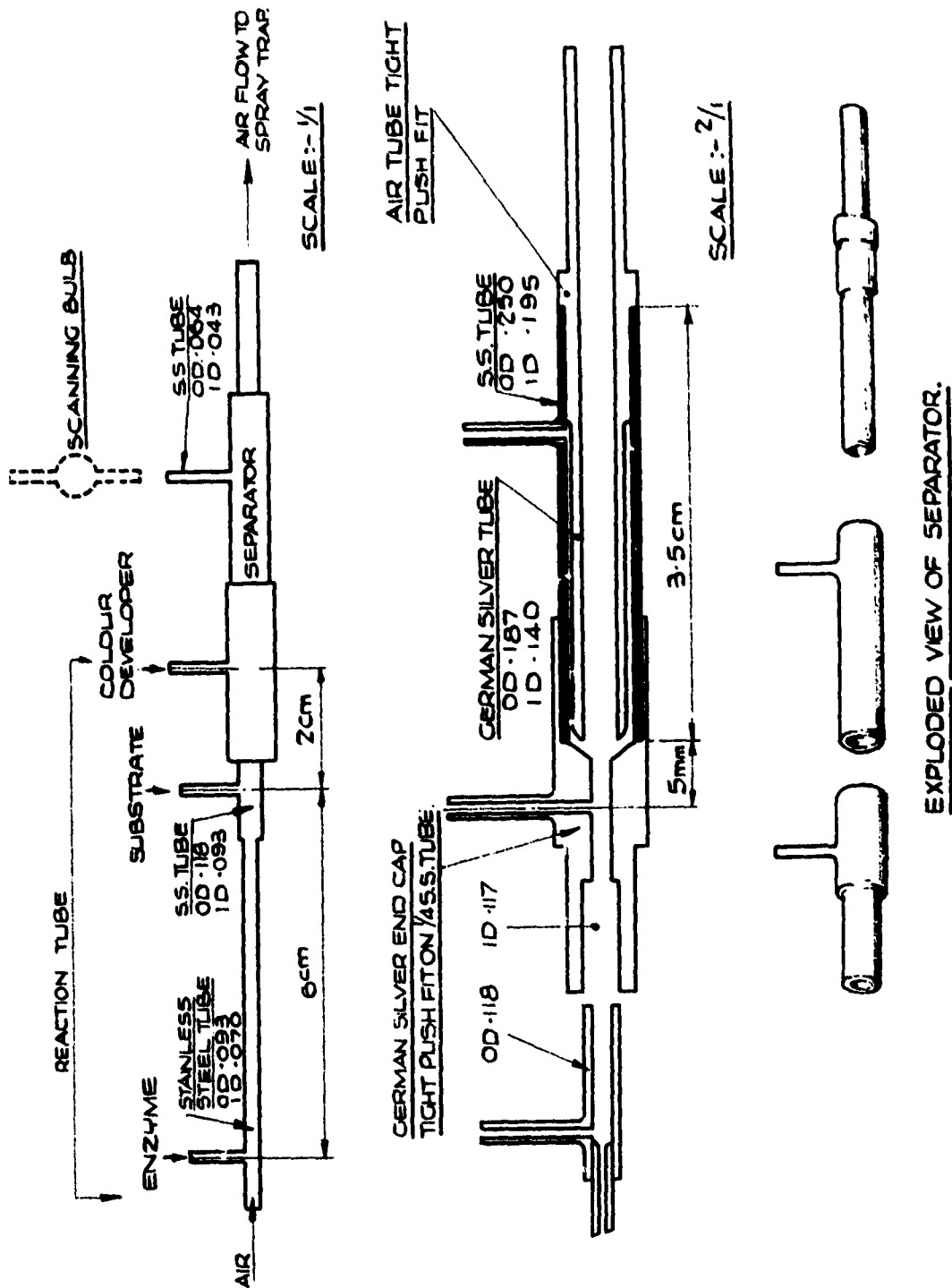
Fig 5
Automatic Alarm

Model 7

T1705/1
PTP 848

Key to Figures 3, 4 and 5

1. Reduction gear box.
2. Lamp housing.
3. Iris diaphragm.
4. Compensating photo cell.
5. Detecting photo cell.
6. Glass bulb (for scanning colour of reaction product).
7. Reaction tube.
8. Air intake.
9. Vacuum pump.
10. Liquid-from-Air Separator.
- 11, 20, 24 volt motor
12. Spray trap
13. Pump exhaust (to hole in case).
14. Stainless steel bottle for waste liquid.
15. Stainless steel bottle for enzyme solution.
16. Stainless steel bottle for colour developer solution.
17. Stainless steel bottle for substrate solution.
18. Main Switch
19. One of the reagent pumps.



DETAILS OF REACTION TUBE - AIR SEPARATOR ASSEMBLY.

FIG.6.

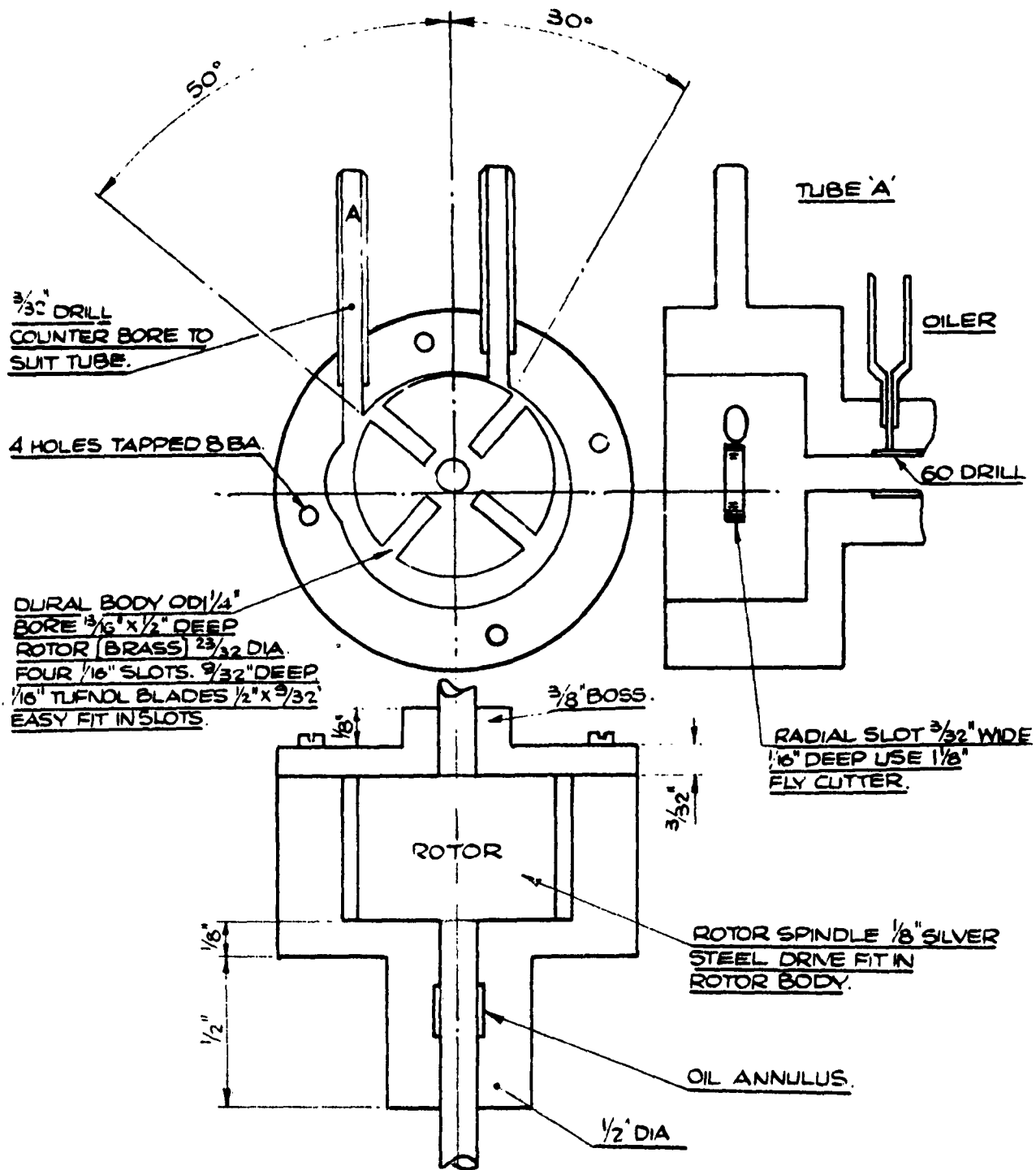


FIG 7

SUCTION PUMP

SCALE 2/1

P 3078

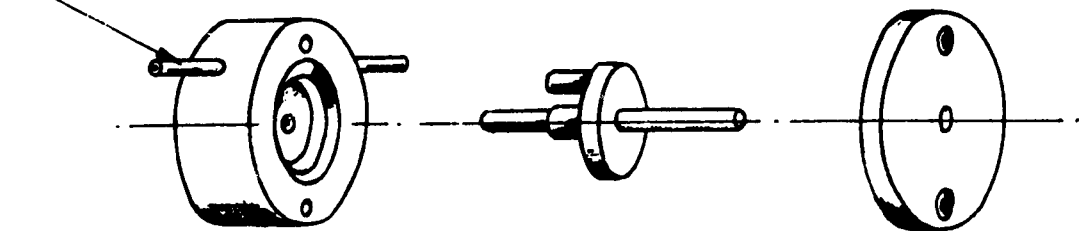
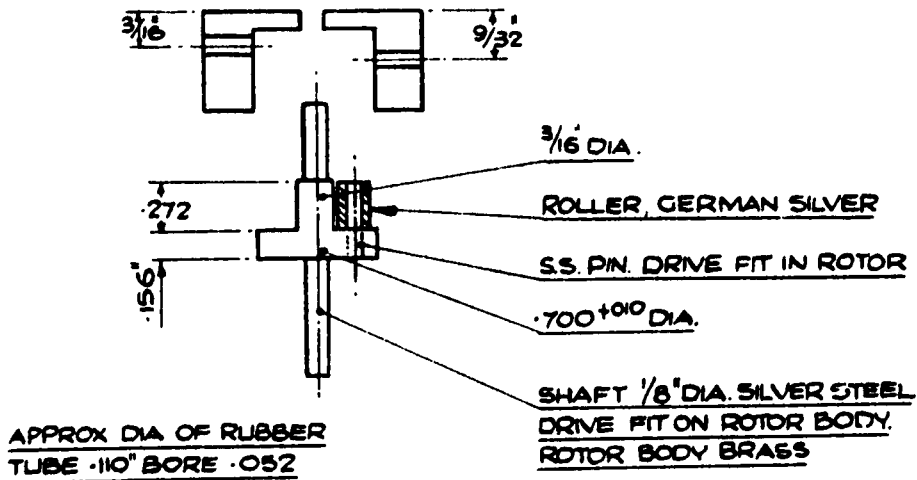
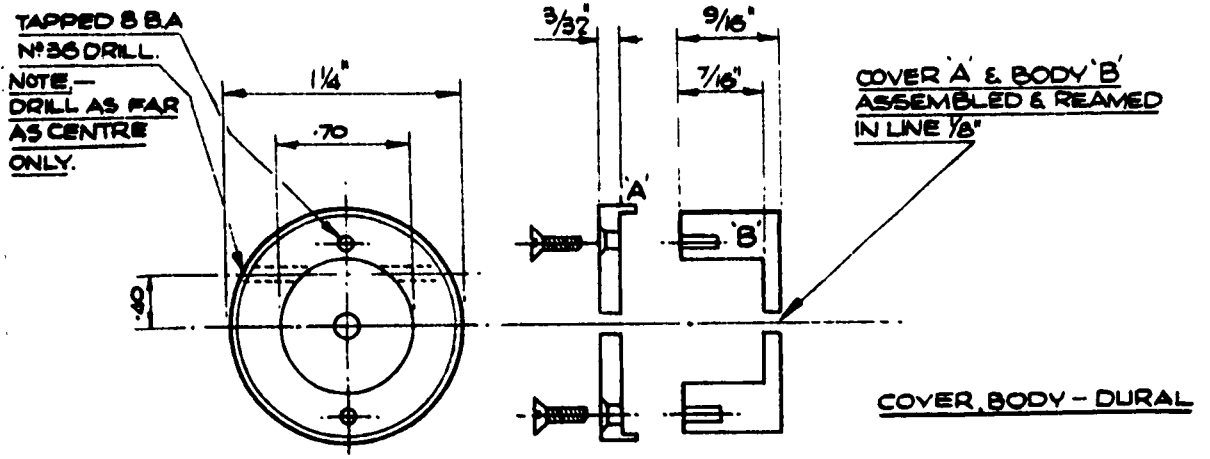


FIG. 8

PERISTALTIC PUMP.

SCALE 1/1

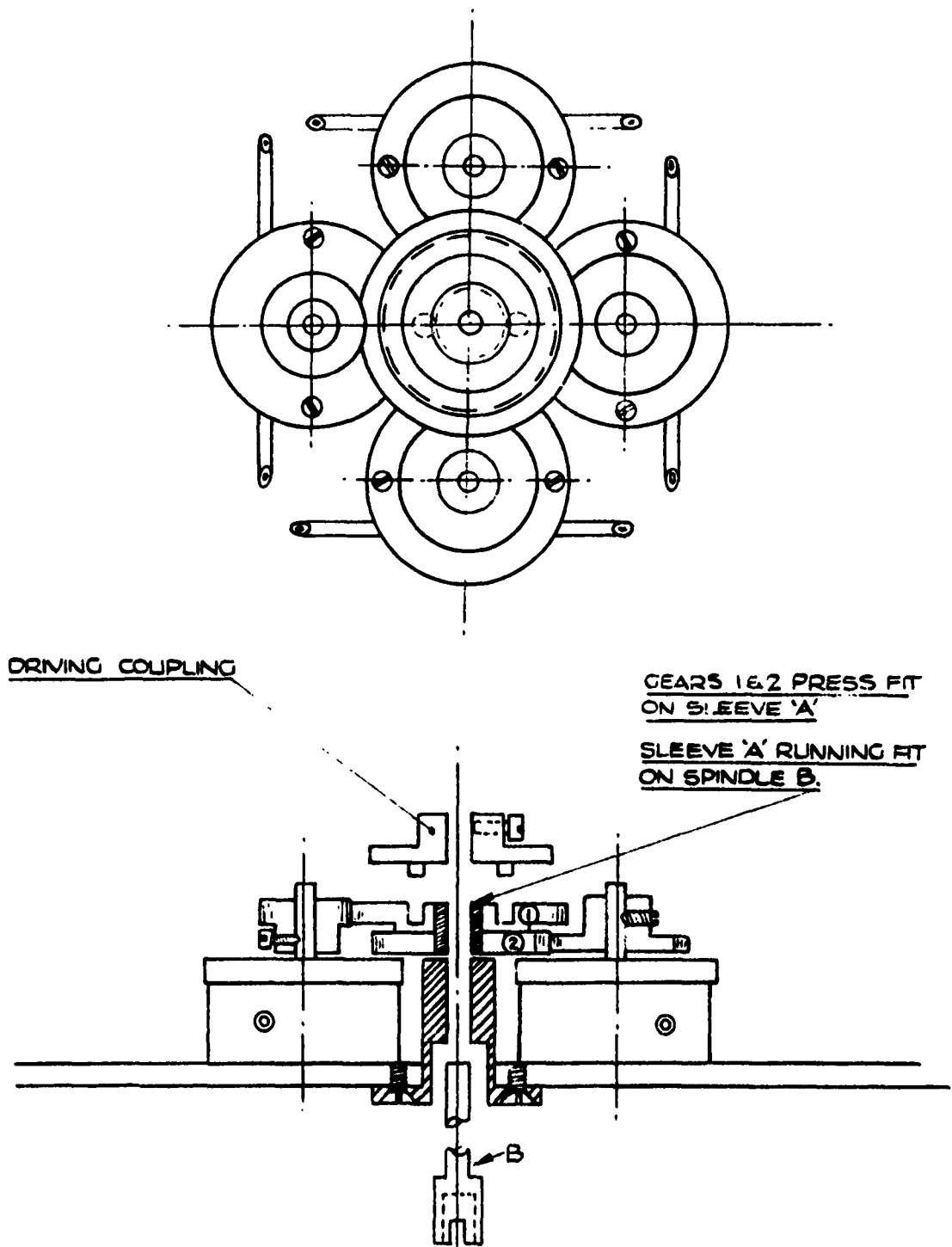
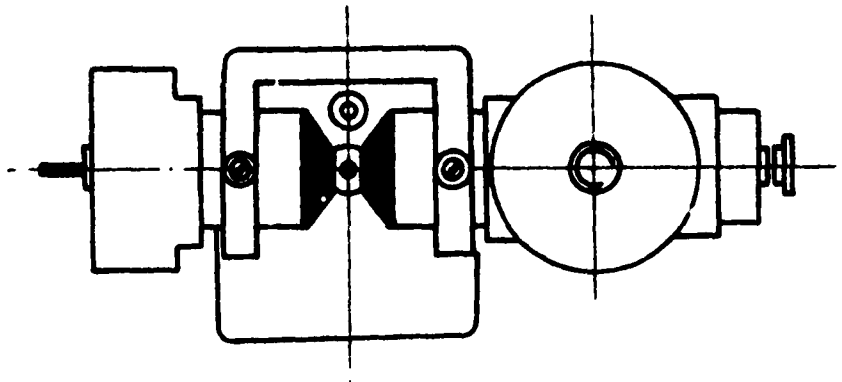
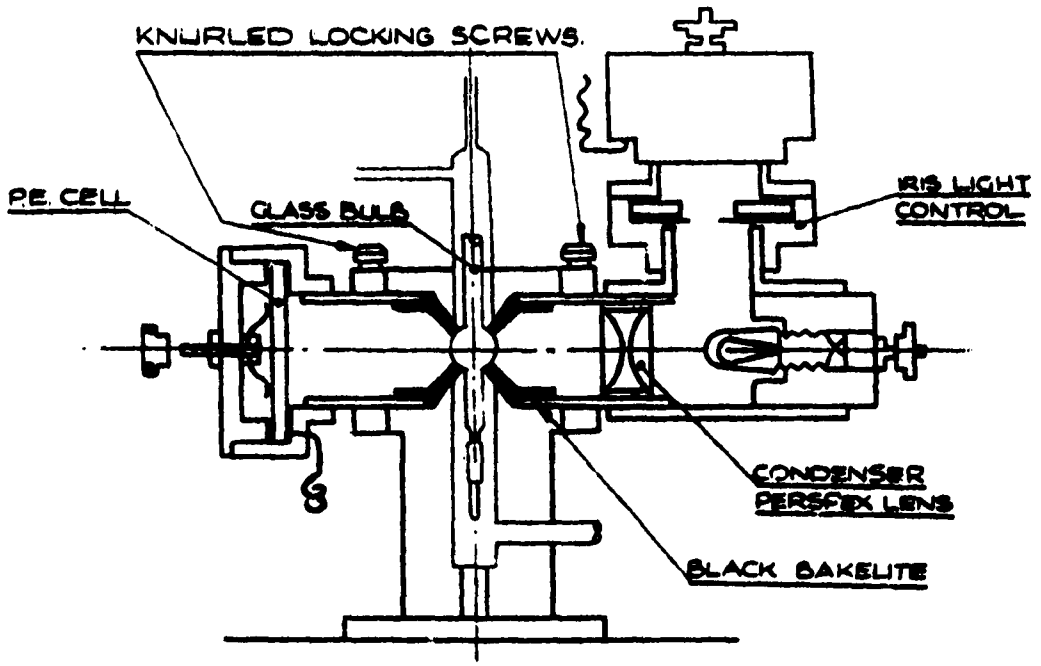


FIG 9

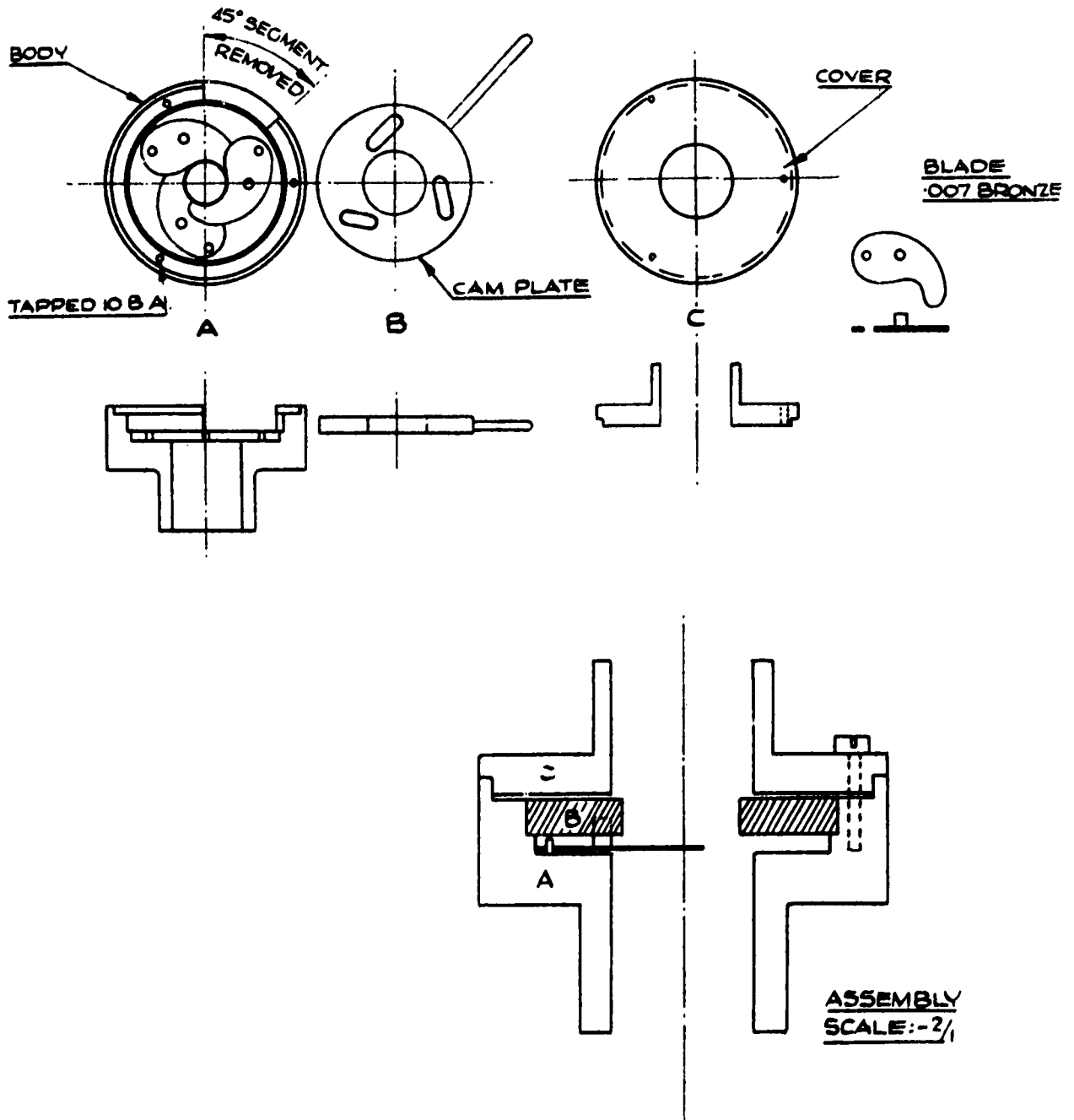
PUMP & GEAR ASSEMBLY.

APPROX TO SCALE



SCANNING UNIT

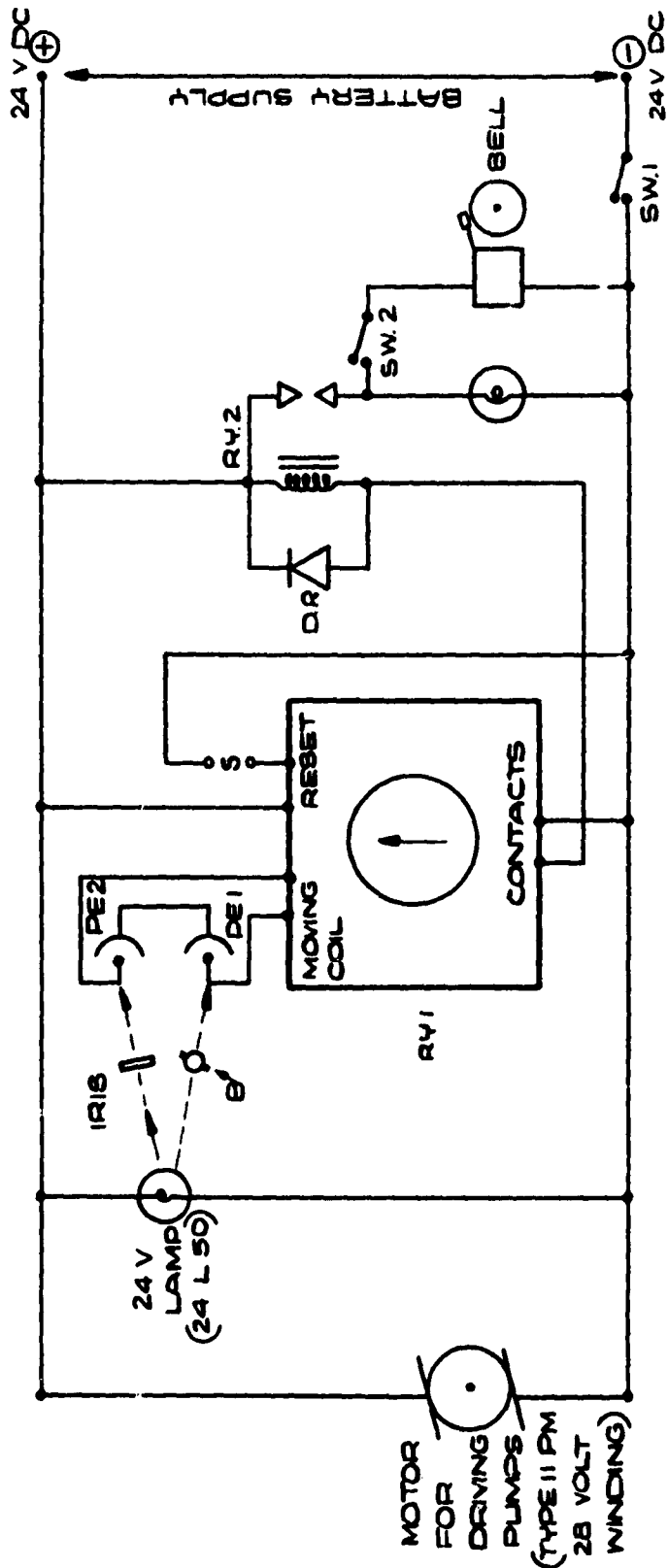
FIG 10



IRIS LIGHT CONTROL

FIG. II

APPROX TO SCALE
BRASS.



- PE 1 = DETECTING PHOTO CELL
- PE 2 = COMPENSATING PHOTO CELL
- B = SCANNING BULB
- S = SOCKETS FOR REMOTE CONTROL. RESET SWITCH IF REQUIRED
- SW.1 = MAIN ON OFF SWITCH SW.2 = BELL SWITCH
- RY.1 = SANGAMO-WESTON SENSITIVE MOVING COIL RELAY TYPE 8124
(WITH 24 V RESET.)
- RY.2 = MOVING IRON RELAY
- DR = DRY RECTIFIER FOR SPARK SUPPRESSION

FIG 12

**CIRCUIT DIAGRAM
OF MODEL 8 ALARM.**

SECRET

PORTON TECHNICAL PAPER NO. 848

DISTRIBUTION

WAR OFFICE

1 Chief Scientist
2 D.C.S.(A)
3- 6 D.C.D.R.D.
7 C.D.P.
8 E.P.4
9 D.O.S.R.

R. & D. Establishments

76-104 C.D.E.E.

Advisory Bodies

10- 17 Members of C.D.A.B.
18- 23 Members of Defensive
Equipment Committee
24- 27 Scientific Advisory
Council

ADMIRALTY

28 D.T.W.P.
29 A./M.D.G.

AIR MINISTRY

30 D.G.D.

MINISTRY OF AVIATION

31 Pats.1
32- 33 T.I.L.

HOME OFFICE

34-36 C.S.A.'s Dept.
(1 copy attn. Dr. McAulay)

BRITISH DEFENCE STAFFS, WASHINGTON

37-43 R. Holmes, Esq., Defence Research Staff

U.K. HIGH COMMISSIONER, OTTAWA

44 Senior Army Liaison Officer

OVERSEAS (through T.I.L.)

45-47 Defence Standard Laboratories
48 Senior Representative, Dept. of Supply
49 Army Staff (U.K.)
50 R.A.A.F. (Tech. Section)

Canada

51-52 Chairman, Defence Research Board
53-54 Defence Research Chemical Laboratories,
Ottawa
55 Suffield Experimental Station

U.S.A.

56-68 Reading Panel
69-75 U.S. Chem. Corps Liaison Officer,
Porton

SECRET



*Information Centre
Knowledge Services*
[dstl] Porton Down,
Salisbury
Wiltshire
SP4 0JQ
22060-6218
Tel: 01980-613753
Fax 01980-613970

Defense Technical Information Center (DTIC)
8725 John J. Kingman Road, Suit 0944
Fort Belvoir, VA 22060-6218
U.S.A.

AD#: AD340089

Date of Search: 5 August 2008

Record Summary: WO 189/369

Title: Detection of anti cholinesterase agents using enzyme inhibition reactor part VIII
Availability Open Document, Open Description, Normal Closure before FOI Act: 30 years
Former reference (Department) PTP 848
Held by The National Archives, Kew

This document is now available at the National Archives, Kew, Surrey, United Kingdom.

DTIC has checked the National Archives Catalogue website (<http://www.nationalarchives.gov.uk>) and found the document is available and releasable to the public.

Access to UK public records is governed by statute, namely the Public Records Act, 1958, and the Public Records Act, 1967.

The document has been released under the 30 year rule.

(The vast majority of records selected for permanent preservation are made available to the public when they are 30 years old. This is commonly referred to as the 30 year rule and was established by the Public Records Act of 1967).

This document may be treated as UNLIMITED.