

401019

S/817/62/005/000/005/012
A006/A101

STEP

AUTHORS: Putilin, Yu. M., Ponomarev, V. D., Milov, A. I., Dautova, L. I.

TITLE: Thermographical investigation of the K_2TiF_6 -NaCl- TiO_2 system

SOURCE: Akademiya nauk Kazakhskoy SSR. Institut metallurgii i obogashcheniya. Trudy. v. 5, 1962, Tsvetnaya metallurgiya, 82 - 94

TEXT: Using Kurnakov's thermal method the authors investigated the phase diagram of the K_2TiF_6 -NaCl- TiO_2 system near binary eutectics K_2TiF_6 -NaCl and K_2TiF_6 - TiO_2 . Batches of these substances were mixed, remelted and heated in platinum crucibles or blocks placed in a pyrometrical apparatus. After thermographical inspection thermograms of 78 compositions were taken. On the basis of results obtained from thermographical, roentgenostruktural and crystallographical analyses a phase diagram of the system and phase diagrams of the binary systems were plotted. A spatial diagram of the system in the investigated range is presented and described. Polythermic cross-sections of the system are given at a constant 1-, 2-, 3- and 4-% content of titanium dioxide. A fusibility diagram

Card 1/4

Thermographical investigation of the...

S/817/62/005/000/005/012
A006/A101

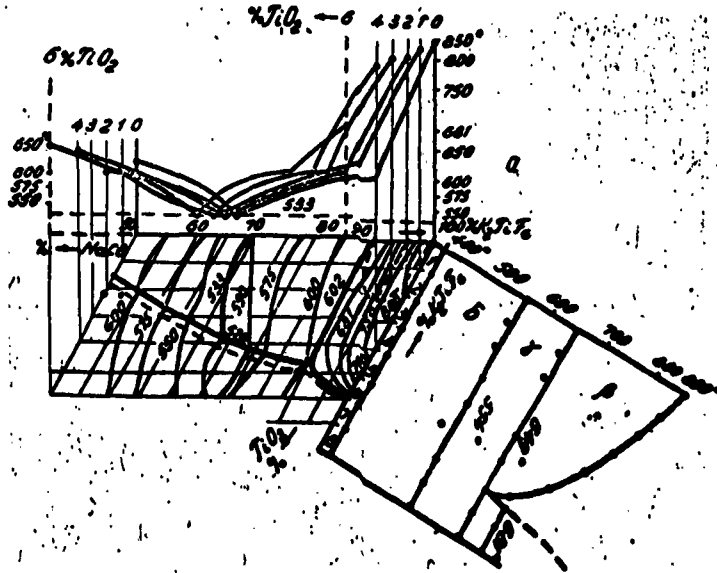
of the system is plotted on the concentration triangle and the boundaries of lamination zones are determined (Figure 13). The behavior of the basic component of the alloys - potassium fluorotitanate - was analyzed. On the basis of previous data, obtained by Kolomitskiy, Milov, Ponomarev and Putilin, it is assumed that this component is present in three polymorphous forms. For pure potassium fluorotitanate the following modifications are to be considered: δ - stable in a range from room temperature to $380^\circ C$; γ - stable in a $280 - 640^\circ C$ range; β - stable at temperature over $640^\circ C$. Starting from $680^\circ C$ noticeable dissociation begins. Full melting takes place at about $850^\circ C$. There are 17 figures and 1 table.

Card 2/4

Thermographical investigation of the...

S/817/62/005/000/005/012
A006/A101

Figure 13. Fusibility diagram of the K_2TiF_6 -NaCl-TiO₂ system

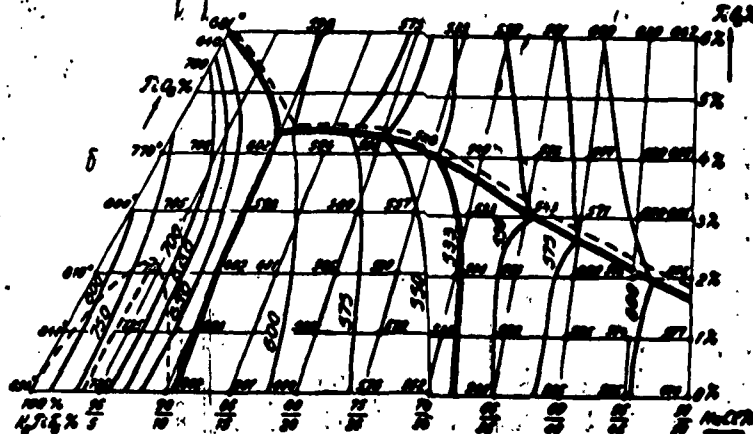


Card 3/4

Thermographical investigation of the ...

S/817/62/005/000/005/012
A006/A101

Figure 13
(continued)



Card 4/4