

**UNCLASSIFIED**

**AD . 419277**

**DEFENSE DOCUMENTATION CENTER**

**FOR**

**SCIENTIFIC AND TECHNICAL INFORMATION**

**CAMERON STATION, ALEXANDRIA, VIRGINIA**



**UNCLASSIFIED**

NOTICE: When government or other drawings, specifications or other data are used for any purpose other than in connection with a definitely related government procurement operation, the U. S. Government thereby incurs no responsibility, nor any obligation whatsoever; and the fact that the Government may have formulated, furnished, or in any way supplied the said drawings, specifications, or other data is not to be regarded by implication or otherwise as in any manner licensing the holder or any other person or corporation, or conveying any rights or permission to manufacture, use or sell any patented invention that may in any way be related thereto.

**MCDONNELL** Aircraft Corporation  
Lambert-Saint Louis MUNICIPAL AIRPORT • BOX 516, ST. LOUIS 66, MO.

553300

②

30 JUL 1963

Ref: 336-450-33955

To: Bureau of Navy Weapons  
Department of the Navy  
Washington 25, D. C.

64-5

Attention: PID-222  
RMMP-23  
DLI-3  
RRMA-22

Via: BWR, St. Louis

← Upper Case

Subject: Molybdenum Structural Component Program.  
Contract No. NOW 61-0653-t  
Task Order No. 61-2

Enclosure: Interim Report <sup>progress</sup> ~~and~~ 1 May 1963 - 1 August 1963,

Enclosure (1) Interim Report is forwarded for information in accordance with the terms of the subject contract.

MCDONNELL AIRCRAFT CORPORATION

*R. H. Hepper*  
R. H. Hepper  
Project Engineer  
Space and Missile Systems  
Engineering Division

REJ:ms

- CC: Lewis Research Center, w/encl.
- Nat'l. Academy of Sciences, w/encl.
- Boeing Airplane Co., w/encl.
- General Electric Co., w/encl.
- Battelle Memorial Institute, w/encl.
- Aerojet General Corp., w/encl.
- Lockheed Aircraft Corp., w/encl.
- Pratt & Whitney Aircraft, w/encl.
- Wyman-Gordon Co., w/encl.
- General Tel. & Elec. Labs., Inc., w/encl.
- Armour Research Foundation, w/encl.
- The Pentagon, w/encl.
- Metals & Ceramics Lab., WPAFB, w/encl.
- Basic Ind. Sec., WPAFB, w/encl.

0678 1963  
7/15/63

*Holden  
Ad 288 0778  
Tel 296 114*

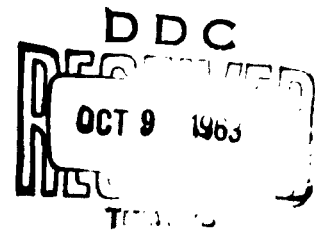
419277

FILE COPY

419277

11.10

Watertown Arsenal Lab., w/encl.  
Grumman Aircraft Engr., Corp., w/encl.  
Republic Aviation Corp., w/encl.  
U. S. Atomic Energy Comm., w/encl.  
North American Aviation, Inc., (Los Angeles, Calif.), w/encl.  
The Martin Co., w/encl.  
Vought Astronautics, w/encl.  
Douglas Aircraft Co., Inc., w/encl.  
The Marquardt Corp., w/encl.  
Convair, Div. General Dynamics Corp., w/encl.  
Thiokol Chemical Corp., (Brigham City, Utah), w/encl.  
Thiokol Chemical Corp., (Denver, New Jersey), w/encl.  
Bell Aircraft Corp., w/encl.  
United Aircraft Corp., w/encl.  
General Motors Corp., w/encl.  
Curtiss-Wright Corp., w/encl.  
Thompson Ramo Wooldridge, Inc., w/encl.  
Battelle Memorial Institute, w/encl.  
APL, w/encl.  
Aerospace Ind. Assn., w/encl. (2 copies)  
Universal-Cyclops Steel Corp., w/encl.  
ASTIA, w/encl. (8 copies)  
BuWeps (PID-222) (1 copy)  
    (RMMP-23) (1 copy)  
    (DLI-3) (2 copies and reproducible)  
BuWeps - I. Machlin (RRMA-22) (3 copies plus spare copies)  
Thermionic Products Co., w/encl.  
Structures Technology Dept., Boeing Co., w/encl.  
North American Aviation Inc., (Columbus, Ohio), w/encl.  
Solar Aircraft Co., w/encl.



MCDONNELL AIRCRAFT CORPORATION

Molybdenum Structural Component Program

Contract No.: NOW 61-0653-t

Task Order No.: 61-2

Progress Report  
Covering Period

1 May 1963 to 1 August 1963

TABLE OF CONTENTS

	Page
1. Introduction . . . . .	2
2. Material Delivery . . . . .	2
3. Leading Edge Test Specimens . . . . .	2
4. Electron Beam Welded Corrugated Panels . . . . .	2
5. Milestone Chart . . . . .	3

1. Introduction. - This report covers the progress during the period between 1 May 1963 and 1 August 1963. A new schedule for delivery of TZM molybdenum to M.A.C. has been received from Universal Cyclops. The design and analysis of the curved and compound curved leading edge test components were completed. Preliminary results of electron beam welded molybdenum corrugated panels on a company funded program are also reported.

2. Material Delivery. - The following anticipated shipping dates were obtained from Universal Cyclops in a letter dated 24 June 1963.

Gauge	TZM Sheet to be Shipped				Total No. Sheet	Sheet Size (In.)
	Shipping Date					
	25 Aug.	1 Sept.	8 Sept.	15 Sept.		
.060	6	4			10	24 x 72
.040			4		4	24 x 72
.020			8	19	27	24 x 60
.016	8	12	13		33	18 x 60

3. Leading Edge Test Specimens. - Singles and compound curvature leading edge test specimens have been designed and analyzed. The same flight trajectory as reported previously in the design of the control surface is used. The critical condition of 1.05 psi collapse pressure at 3000°F occurs during re-entry glide. Figure 1 illustrates one of the leading edge configurations.

4. Electron Beam Welded Corrugated Panels. - A M.A.C. funded program has been initiated to investigate the feasibility of Electron Beam welding molybdenum corrugated panels and then coating these panels. To date two panels have been successfully welded by Hamilton-Standard using their Hamilton-Zeiss equipment. One of these panels was coated with the M.A.C. L-7 process and the other panel was broken while being coated by a vendor. The M.A.C. coated panel successfully

passed an oxidation test at 2500°F for one hour. This panel was then loaded in bending to failure. A shear flow of 183 lb./in. was developed in the weld before the corrugation failed in tension. Additional panels are being prepared for other tests.

5. Milestone Chart. - The revised milestone chart shown in Figure 2 reflects the new material delivery dates.

MOLYBDENUM LEADING EDGE

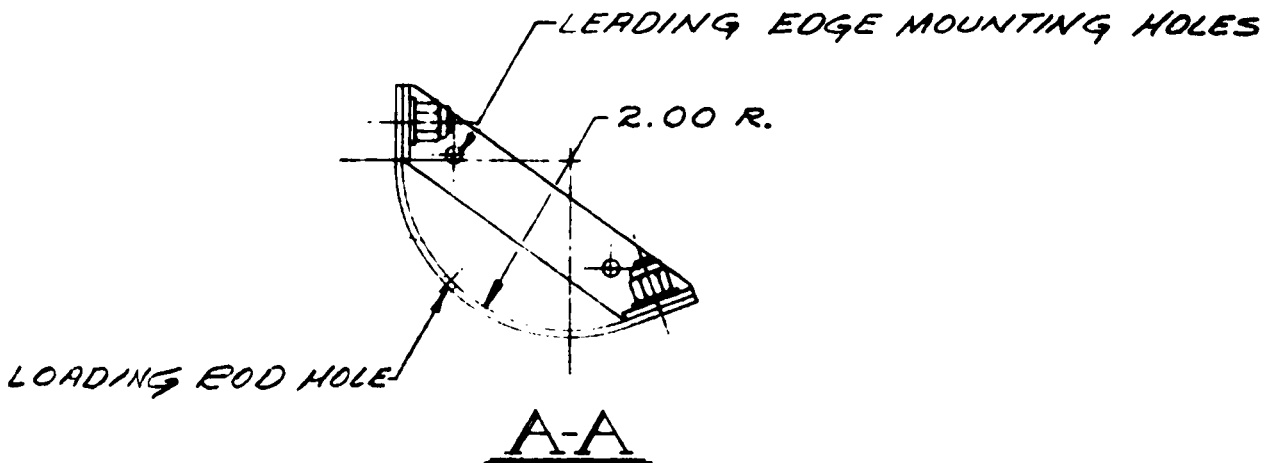
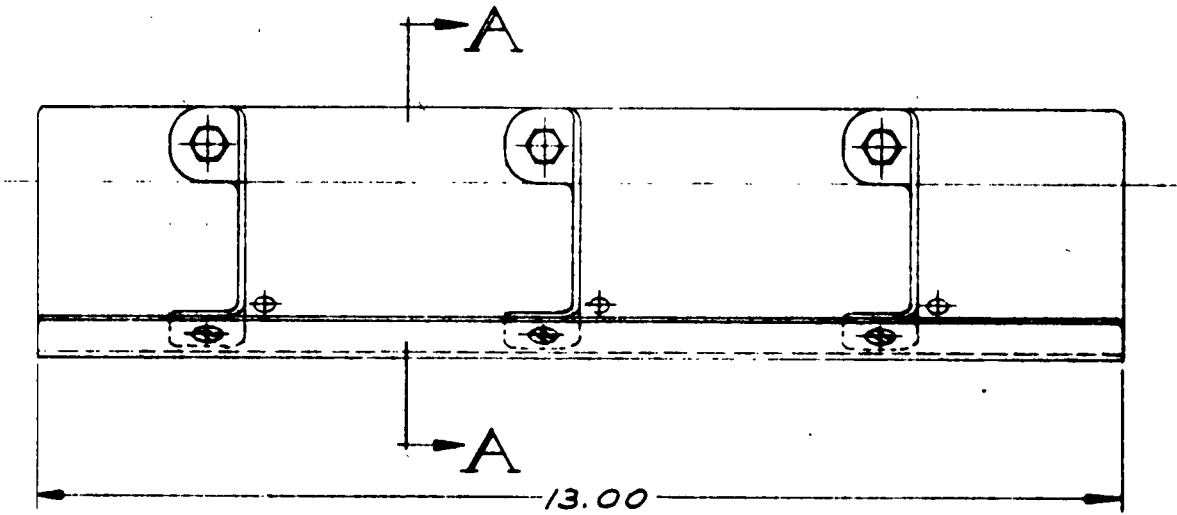


FIGURE 1

MILESTONE CHART

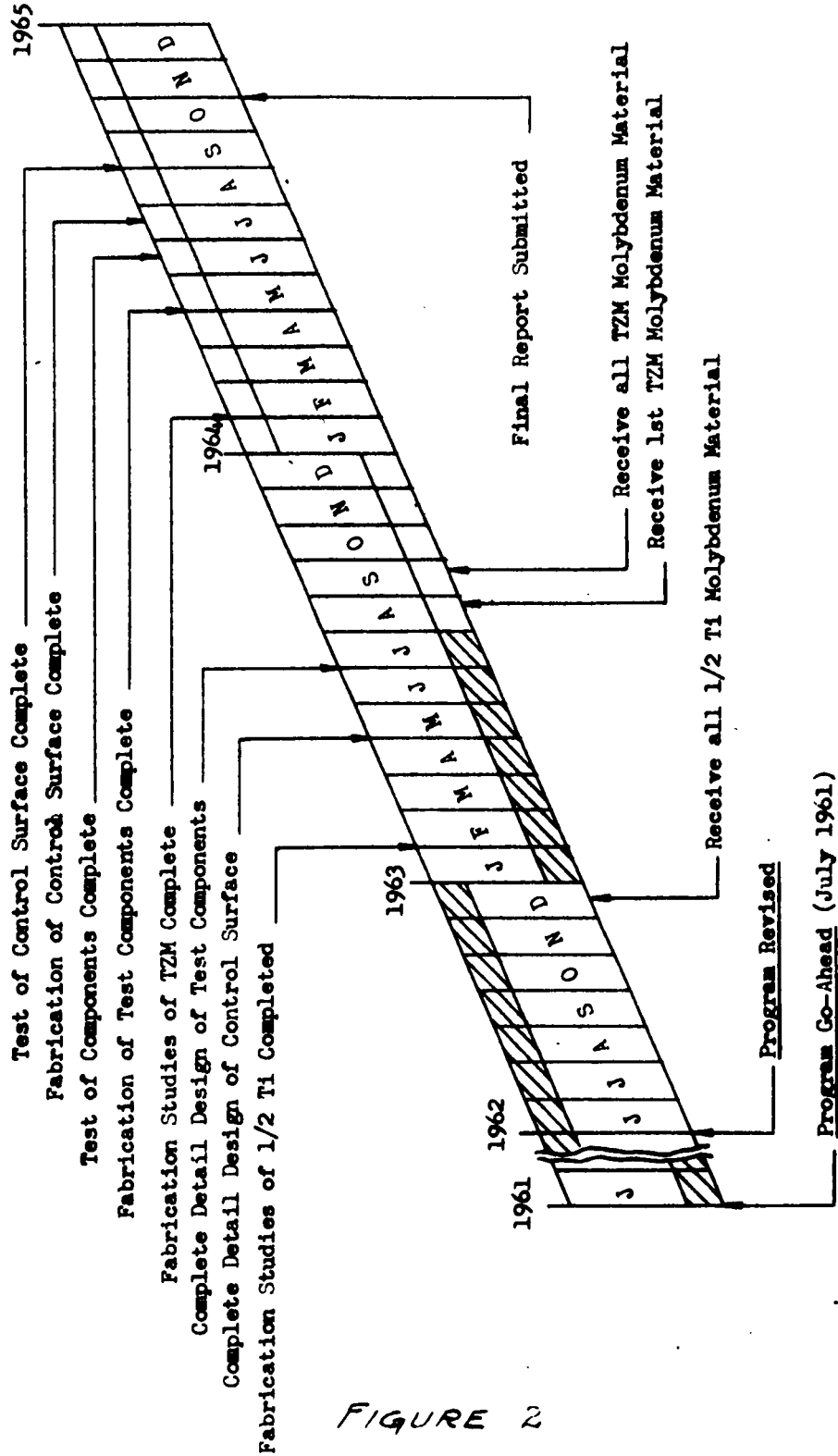


FIGURE 2