

UNCLASSIFIED

AD 4 6 4 1 6 2

DEFENSE DOCUMENTATION CENTER

FOR

SCIENTIFIC AND TECHNICAL INFORMATION

CAMERON STATION ALEXANDRIA, VIRGINIA



UNCLASSIFIED

NOTICE: When government or other drawings, specifications or other data are used for any purpose other than in connection with a definitely related government procurement operation, the U. S. Government thereby incurs no responsibility, nor any obligation whatsoever; and the fact that the Government may have formulated, furnished, or in any way supplied the said drawings, specifications, or other data is not to be regarded by implication or otherwise as in any manner licensing the holder or any other person or corporation, or conveying any rights or permission to manufacture, use or sell any patented invention that may in any way be related thereto.

CLASSIFIED BY: DDC

464162



DEPARTMENT OF THE NAVY

HYDROMECHANICS

STRENGTH OF SILVER-BRAZED PIPE JOINTS
UNDER DYNAMIC LOAD

AERODYNAMICS

by

S. Zilliagus

STRUCTURAL
MECHANICS

CLASSIFIED BY USIA ON BEHALF OF DDC

DDIC
RECEIVED
JUN 7 1965
DDC-IRA E

APPLIED
MATHEMATICS

STRUCTURAL MECHANICS LABORATORY
RESEARCH AND DEVELOPMENT REPORT

ACOUSTICS AND
VIBRATION

April 1965

Report 1972

**Best
Available
Copy**

STRENGTH OF SILVER-BRAZED PIPE JOINTS
UNDER DYNAMIC LOAD

by

S. Zilliocus

April 1965

Report 1972
S-F013 10 01
Task 3974

TABLE OF CONTENTS

	Page
ABSTRACT	1
ADMINISTRATIVE INFORMATION	1
INTRODUCTION	1
DESCRIPTION OF TESTS	2
Drop Vehicle	2
Test Specimens	2
Instrumentation	3
TEST RESULTS	3
DISCUSSION OF RESULTS	4
Permanent Strains	4
Stress in Pipe at Joint Failure	5
Impact and Rebound Velocities	7
Plastic Strain Energy in Pipe	7
Possible Effects of Bending and Internal Pressure	9
CONCLUSIONS	9
RECOMMENDATIONS	10
ACKNOWLEDGMENTS	27
REFERENCES	27

LIST OF FIGURES

	Page
Figure 1 - Section of Drop Test Vehicle	11
Figure 2 - Drop Test Vehicle Ready for Release	12
Figure 3 - Failed 3-Inch Specimen	13
Figure 4 - Typical Record of Tensile Strain, Acceleration, and Bending Strain	14
Figure 5 - Pipe Stress at Bond Failure	15
Figure 6 - Pipe Stress during Initial Drop	16
Figure 7 - Maximum Value of Pipe Stress	17
Figure 8 - Rebound Velocity versus Impact Velocity of Drop Test Vehicle	18
Figure 9 - Plastic Strain Energy per Unit Volume in Pipe at Joint Failure	19
Figure 10 - Stress-Strain Data for Copper-Nickel Pipe from Static and Dynamic Tests	20
Figure 11 - Proposed Coupling Design Changes	21

LIST OF TABLES

Table 1 - Dimensions and Areas of Pipe and Couplings	22
Table 2 - Test Results	23
Table 3 - Pipe Loads at Bond Failure - Static Test Data	24
Table 4 - Comparison of Ultrasonically and Visually Obtained Bond Percentage	24
Table 5 - Flexibilities of "Parts" of Specimens	25
Table 6 - Approximate Relationships among Flexibilities of "Parts" of Typical Specimens	26

ABSTRACT

Destructive dynamic load tests were conducted on specimens of copper-nickel pipe joined to bronze couplings by Grade III silver-braze alloy bonds. The bond areas varied from 9 to 85 percent of the total surfaces available for bonding.

Every failure occurred in the bond. Cracking of the coupling sometimes accompanied bond failure. In no case was there rupture of the pipe. Since many joint failures apparently were influenced by a coupling geometry with abrupt changes in cross section, a modified coupling design is proposed.

The dynamic forces required to produce failure of silver-brazed joints having less than 40 percent bond were considerably smaller than static failure loads in tests conducted elsewhere on similar specimens. For joints with more than about 60 percent bond, the dynamic force values were of the same magnitude as the static loads.

Joints having more than 60 percent bond failed only after considerable elongation of the pipe. For sufficiently great initial dynamic force, joint failure occurred immediately; otherwise two or more loadings were required. Impact velocities associated with joint failures ranged from about 1.6 to about 31 fps.

It appears that the current practice of rejecting joints having less than 60 percent bond is justified for dynamic loading.

ADMINISTRATIVE INFORMATION

These tests were recommended to the Bureau of Ships by letter from the David Taylor Model Basin (Serial 7-392 of 4 October 1963). The work was undertaken as Task 3974 of Project S-F013 10 01.

INTRODUCTION

Dynamic load tests of representative shipboard type silver-brazed pipe connections were conducted at the David Taylor Model Basin after silver-brazed pipe joint bonds had failed in service during shock tests of operating ships. The data indicated that these joints had low bond percentages, that is, the silver-braze bonds covered areas which were small in comparison with the total surfaces available for bonding.

The basic objective of the investigation was to find a relationship between joint strength under dynamic loading and bond percentage.

Two series of tests were carried out. The initial series was designed to determine the dynamic strength of joints (with less than 60 percent bond) similar to those which had failed in service. The later tests were devoted to joints having bonds (63 to 85 percent) covering more than the minimum required¹ proportion of the available bonding area.

A tensile test subjecting the brazed joint between pipe and coupling to a dynamic shear force was arranged. It was expected that this loading would be representative of a severe shipboard shock condition and should provide useful data for determining the dynamic strength of the connection.

To provide a basis for evaluating the strength of the joint, a criterion of performance was required. In consonance with current practice,¹ it was postulated that the bond should not fail; i.e., the bond in a joint must be capable of developing the ultimate strength of the weakest connecting pipe or fitting.

DESCRIPTION OF TESTS

DROP VEHICLE

A drop vehicle was constructed specifically for these tests. Specimens were prepared for testing by the attachment of two retaining flanges. One flange was attached to a weight, the other to the removable top of the vehicle. The assembly was lowered into the vehicle and the top bolted down; details of the test arrangement are given in Figures 1 and 2. Sufficient clearance was provided below the suspended weight to preclude its contact with the bottom of the test vehicle while the specimen was intact.

For each test, the drop vehicle was raised a known distance and dropped onto an impact plate by tripping an electric release mechanism (Figure 2). Upon impact, the specimen was subjected to a tensile dynamic force equal to the product of the suspended mass and its acceleration. The dynamic tensile force in the pipe was transferred into the coupling primarily by means of shearing force in the bond. If joint failure did not occur, the suspended mass oscillated with a characteristic frequency which depended mainly on the stiffness of the specimen and the magnitude of the suspended mass, since the vehicle was several times heavier and stiffer than the weighted specimen.

TEST SPECIMENS

The Mare Island Naval Shipyard, which had been fabricating similar specimens for a series of static strength tests,² furnished 33 specimens together with information on the percentage of bond in each joint. The specimens consisted of 70-30 copper-nickel pipe³ and bronze couplings^{4, 5} joined with Grade III silver-braze alloy.⁶

¹References are listed on page 27.

Nineteen 1-in. and eight 3-in. specimens were tested to destruction. Geometric data on the specimens are given in Table 1. The bond percentage of each joint, as determined by ultrasonic inspection at Mare Island Naval Shipyard, is shown in Table 2.

INSTRUMENTATION

Instrumentation consisted of an unbonded strain gage accelerometer attached to the lower flange (Figure 1) and, in some cases, tensile and bending strain gages attached at the centers of the pipe sections and the couplings. The gages were powered by a carrier amplifier which also amplified the output signals from the gages. A recording oscillograph provided display of the output signal. A signal from a tuning fork oscillator was used as a time reference.

The recording system had an essentially flat frequency response from direct current to 700 cps, and the natural fundamental frequency of a specimen as suspended was about 300 cps. The drop test vehicle was designed to have a frequency several times greater than that of the weighted specimen.

TEST RESULTS

Bond failure occurred in each specimen tested to destruction. There were no pipe ruptures, but cracking of the coupling did occur in five specimens. When the magnitude of the dynamic force was made sufficiently great, joints failed during the first loading. Otherwise two or more force applications were required for joint separation. In some cases, repeated application of approximately equal forces resulted in bond failure.

For the initial series of tests (joints with less than about 60 percent bond), permanent axial deformation of less than about 2 percent occurred in the pipe sections. For the second series (joints with more than about 60 percent bond), permanent pipe strains of up to about 10 percent axial and about 4 percent circumferential took place and were accompanied by permanent circumferential coupling strains of up to about 3 percent. The circumferential "flaring out" of the coupling was accompanied in five cases by cracking at the reentrant corner in the shoulder; see Figure 3.

A representative oscillograph record from a drop test, giving acceleration of the lower flange, and both tensile and bending strain in the pipe is shown in Figure 4. As expected, acceleration and tensile strain time histories are similar in shape and are in phase. Permanent elongation of the pipe is indicated by the zero shift in the tensile strain record. There was also permanent deformation due to bending, indicating yielding in the pipe to relieve the eccentricity of the specimen.

*Four 1-in. and two 3-in. specimens were not tested to destruction because pipe ends slipped excessively in the retaining flanges, thus reducing the forces experienced by the joints.

Table 2 gives the height of drop, peak acceleration and duration, dynamic load, and other pertinent values for each drop test.

To present the data from 1-in. and 3-in. specimens together, plots were made using tensile stress in the pipe as the ordinates and ultrasonically obtained bond percentages as the abscissae. Figures 5, 6, and 7 give stress in the pipe at failure of the joint, during the first drop, and when it reaches its maximum value, respectively. Included for comparison in Figure 5 are static test data,² which are also listed in Table 3.

Representative values of impact and rebound velocities of the drop vehicle are shown in Figure 8. The maximum impact velocities required to cause failure were about 10 fps for joints having less than 60 percent bond and about 31 fps for joints having more than 60 percent bond.

Finally, the plastic strain energy per unit volume absorbed by the highly ductile pipe sections has been plotted against the percentage of bond in Figure 9, together with comparative static test data.² The strain energy was obtained by integration of the area under a stress-strain curve (Figure 10).

As a check on the ultrasonic measurements,¹ a visual estimate was made of the bond areas of selected specimens after the joints had failed. Table 4 gives ultrasonically and visually obtained bond percentages for comparison.

Each specimen was divided into "parts" consisting of the clear length of pipe between flanges, socket of coupling plus braze metal and pipe included therein, and the barrel (remainder) of the coupling. The approximate relationships among the flexibilities of the "parts" of the specimens were calculated and are given in Tables 5 and 6.

DISCUSSION OF RESULTS

PERMANENT STRAINS

The drop tests induced several types of permanent deformation, namely, bending, axial, and circumferential. The effect of bending did not appear to reduce significantly the ultimate dynamic strength of any specimens. Since the pipe material is quite ductile, the pipe simply relieved itself, by yielding, of any eccentricity in the specimen.

On the other hand, large permanent axial tensile strain in the pipe was significant, giving rise to considerable circumferential shrinkage or "necking down" which extended to the coupling, where the abrupt change in section caused a severe strain discontinuity; see Figure 3. While "necking down" of the pipe was taking place, the coupling socket was experiencing permanent circumferential tensile strains, i.e., "flaring out," due to the eccentric "lap-joint" action of the brazed connection. "Necking down" of the pipe together with "flaring out" of the coupling probably caused considerable tensile stress between pipe and coupling at the abrupt change in section. Thus, failure may have occurred due to tensile and shear stresses acting in combination.

Thus it may be seen that undesirable geometry of the couplings (and of other similar cast fittings)⁵ probably reduces the strength of brazed joints. A revised coupling configuration which lacks some of the deficiencies present in the existing design is shown in Figure 11 and includes the following changes:

1. Rounding all reentrant corners to decrease stress concentrations.
2. Increasing the thickness of the socket to prevent its "flaring out."
3. Removing material at the end of the socket to provide for a more gradual change in cross section between pipe and coupling.

STRESS IN PIPE AT JOINT FAILURE

Since the ratios of pipe and coupling sectional areas to 100 percent bond areas are about the same for 1-in. and 3-in. pipe (Table 1), use of stress in the pipe as a variable in Figures 5, 6, and 7 is justified.

The data of Figure 5 indicate that for joints having bonds of less than 40 percent, the dynamic force required to produce failure was generally much smaller (often by 50 percent) than the static force.² Also, the 3-in. specimens failed at a lower static and dynamic tensile stress in the pipe than did the 1-in. specimens.

For joints having more than about 60 percent bond, the dynamic forces required to produce failure were of the same magnitude as the static. The 3-in. specimens failed at a lower static tensile stress than the 1-in. specimens. The dynamic stress values showed about the same scatter as the static values and fluctuated essentially within the extremes of the latter.

Pipe stresses due to initial drops are given in Figure 6, and the maximum values attained are plotted in Figure 7. An examination of Table 2 and Figures 5 through 7 lead to the following observations:

1. The influence of a large number of repeated loads on joint strength decreases as the percentage of bond is increased. For example, Joint 1-1, with 20 percent bond, withstood 10 drops at pipe stresses of about 10,000 psi and then 18 drops at about 32,000 psi. Failure occurred as a result of the 29th drop at a pipe stress of only 12,000 psi. On the other hand, Joint 1-116, with 82 percent bond, underwent 50 drops at pipe stresses which gradually increased from about 22,000 to about 37,000 psi. The drop height was increased for the 51st drop, resulting in joint failure at a pipe stress of about 56,000 psi. Thus, a joint with 20 percent bond failed after 29 drops whereas a joint with 82 percent bond apparently remained undamaged after 50 drops at greater forces.

2. In some cases, there is a decrease in the developed dynamic force after only a few successive identical drops, evidencing progressive bond failure in the joint. There is an increase in other cases, indicating strain hardening of the (initially very ductile) pipe. In Joint 1-3, for example, the pipe stress decreases from about 18,000 to about 9000 p-si during three 1-in. drops whereas in Joint 1-22, there is an indication of an increase from about 28,000 to about 30,000 psi during four 2-in. drops.

3. A roughly linear relationship exists between the upper bound of tensile stress in the pipe and the percentage of bond.

4. The best straight line fit to the data of either Figure 5 or 7 would not pass through the origin. This phenomenon probably results from the omission in the bond percentage determination of the braze metal in the insert ring groove, at the extreme end of the pipe, and in the fillet at the juncture of pipe and coupling; see Figure 3.

The scatter among the points in Figures 5, 6, and 7 can probably be explained as follows:

1. Undoubtedly the greatest cause of scatter is the lack of uniformity of the tests in number and magnitude of load applications and, although perhaps less importantly, in specimen geometry.

2. Possible variation in joint quality and errors in measurement of percentage of bond. It may be seen in Table 4 that agreement between visual and ultrasonic percentage of bond is much better for the second series of specimens than for the first. It would appear that ultrasonic techniques are improving and/or that higher bond percentages (over 60) are easier to determine accurately.

3. Errors due to limitations of instrumentation. These are not much more than ± 5 percent.

4. Errors of data reduction. No greater than those of Item 3.

It may be noted that the test results have not been presented in terms of average shear stress in the silver-brazed joint. The average shear stress can be obtained by dividing the measured dynamic load acting on a joint by its bond area. A plot of bond shear stress versus percent bond would appear to show that the shear stress which a joint can endure decreases with increasing percent bond rather than being constant at failure, for both static⁷ and dynamic loading. Thus the most important relationship, namely, that the load which a joint can support increases with percent bond, would be distorted.

IMPACT AND REBOUND VELOCITIES

After initial collision with the impact plate, the drop test vehicle rebounded several times. Measurements of the time intervals between successive impacts of the vehicle showed the magnitudes of its rebound velocities to be up to about 60 percent of the initial impact velocities. Therefore the magnitude of the total change in velocity of the vehicle was up to about 1.6 times that of the initial impact velocity. Representative values of drop heights and associated rebound velocities of the vehicle are given in Figure 8. These data indicate that the total velocity change varied from up to about 2.5 to a maximum of about 33 fps whereas the drop velocities ranged from about 1.6 to about 31 fps. When the impact velocity exceeded about 16 fps, the rebound velocity was greatly reduced. This phenomenon probably resulted from the conversion of most of the kinetic energy of the drop vehicle into plastic strain energy in the impact plate and the vehicle.

For joints having less than 60 percent bond, the maximum impact velocity and change in velocity required to produce bond failure were about 10 and 16 fps, respectively. Thus all these failures were caused by velocities not significantly greater than the capacity of high impact shock machines.

For joints having more than 60 percent bond, the maximum impact velocity and change in velocity required for bond failure were about 31 and 33 fps, respectively.

PLASTIC STRAIN ENERGY IN PIPE

The plastic strain energy absorbed by the pipe per unit volume was obtained as follows: First, measured dynamic plastic stress-strain data were compared with static data (Figure 10) for the pipe and found to agree fairly well. Next, the inelastic part of the area under the static stress-strain curve corresponding to a particular dynamic load was computed. This area represented the plastic unit strain energy for the pipe and was plotted against percentage of bond in Figure 9 together with similarly obtained energy from static tests.² Examination of Figure 9 discloses the following:

1. For bond percentage between 60 and 80, the energy per unit volume appears to be independent of percent bond.
2. For a given unit energy, a statically tested joint with only about 45 percent bond was equivalent to a dynamically tested joint with about 70 percent bond.
3. The 3-in. pipes are capable of absorbing far less plastic unit energy, generally, than are the 1-in. pipes.

The flexibility relationships of Tables 5 and 6 have been included to indicate which "part" of a given specimen tends to absorb the most elastic strain energy, this absorption being directly proportional to flexibility. Since the coupling flexibility remains constant and the joint flexibility varies but little for a given pipe diameter, the proportion of the total elastic strain energy absorbed by the pipe is primarily a function of its length.

But in these tests, the pipes underwent a great deal of axial plastic deformation. Why, then, is the elastic flexibility of interest? The answer is that the initial (elastic) deformation of the pipe determined the subsequent course of events - the highly ductile pipe merely continued to deform plastically after yielding had begun, attracting to itself the major part of the energy imparted to the specimen.

A reduction in length of the pipe sections led, as may be seen in Table 6, to an increase in the relative flexibilities of the couplings and the joints. That this change, in turn, caused the joint to absorb a greater proportion of the total energy is indicated by the inability of the shorter specimens to survive repeated loading. Three of four specimens which failed as a result of one drop were short specimens, ranging in length from 20 to 60 percent of that of the usual specimens; see Table 2 and Figure 6.

In general, the flexibility of the joint relative to the total flexibility of the 3-in. specimens was between about 2 and 3 times greater than that of the 1-in. specimens. Therefore, it might be argued that the 3-in. joint absorbs a greater proportion of the total strain energy available to the specimen than does the 1-in. joint. The relatively low values of energy absorbed by the 3-in. pipes up to failure of the joint (Figure 9) may be interpreted to support this contention.

From the preceding discussion of plastic strain energy, the following observations can be made:

1. In an acceptable joint¹ (one having at least 60 percent bond), there is no increase in resistance to repeated loading with an increase in bond percentage.
2. Repeated static loads appear to be less injurious than repeated dynamic loads.
3. Repeated loads appear to be more injurious to 3-in. than to 1-in. joints.
4. In a shipboard pipe system, the ductile pipe serves as an energy absorber, deforming (plastically when shock input is sufficiently great) without being damaged. The greater the pipe length between a fitting and the imposed shock motion, the smaller is the probability of joint failure.

POSSIBLE EFFECTS OF BENDING AND INTERNAL PRESSURE

In a shipboard pipe installation, both bending and internal pressure can be present together with axial tensile dynamic loading. In a long span of pipe subjected to bending, pipe yield would prevent significant bond shear stresses from developing in joints in the span. However, large joint shear stresses might be encountered in short spans subjected to bending, a. changes of direction (at elbows, tees, crosses, etc.), and at points where fittings are subjected to impact. The tests described in this report were tensile, not bending. But since shear stress in the joint can be produced equally well by either tensile or bending loads, it is believed that the tests were realistic. Internal pressure, which was not present in these tests, would cause circumferential tensile stress (25 and 39 percent of minimum required yield strength in the 1- and 3-in. pipes, respectively, for the design pressure of 700 psi) and axial tensile stress about half as great in the pipe. The net result might be to decrease the dynamic load required for joint failure.

In the case of explosion attack against a ship it can be argued that internal pressure is relatively unimportant in failures of valves and hull fittings, and that the important factor is the mechanical shock associated with the motions of the hull as induced by the explosion shock wave. It appears likely that the same conclusion would apply to the pipe couplings discussed in this report. Hence, a mechanical test without superimposed internal pressure should serve as a good index of joint strength.

CONCLUSIONS

The following conclusions for silver-brazed pipe and fitting connections are based on data from destructive dynamic tensile tests of copper-nickel pipe³ and bronze coupling specimens.^{4, 5}

1. Joint failure always occurs in the bond.
2. The dynamic strength of a silver-brazed joint is:
 - a. Considerably less than its static strength when bond percentage is less than 60.
 - b. On a par with its static strength when bond percentage is greater than 60.
3. When the bond percentage is greater than about 60, cracking of the fitting can accompany the bond failure.
4. Cast bronze fittings have undesirable design features, namely, abrupt changes in sectional area and sharp reentrant corners which probably reduce joint strength. These deficiencies could be remedied.

5. The indices associated with failures of joints having less than 60 percent bond are:
 - a. Bond failures occur at velocity changes lying within the range capacity of high impact shock machines.
 - b. Permanent axial pipe strains of up to about 3 percent accompany bond failure. Permanent strains in the fitting are negligible.
 - c. Failure results from shear stress in the bond.
6. For bond percentages above 60, joint failures are associated with the following indices:
 - a. Velocity changes as great as 33 fps are required to produce bond failure.
 - b. Bond failures are accompanied by permanent axial tensile strains in the pipe of up to about 10 percent and permanent circumferential tensile strains in the fitting of up to about 3 percent.
 - c. Bond failures apparently result from combined shear and tensile stresses.
7. Depending primarily on the magnitude of the dynamic load, the following types of failure, listed in order of decreasing magnitude of dynamic load, can be expected:
 - a. The bond fails immediately as a result of the first load.
 - b. The bond fails suddenly, after having survived several dynamic loads, or gradually, while being subjected to repeated loads.
 - c. The pipe, which is very ductile, is capable of absorbing a large quantity of plastic strain energy, thereby protecting the joint from failure.

RECOMMENDATIONS

1. The current practice² of rejecting joints with less than 60 percent bond should be continued.
2. Since the type of test described in this report is effective in evaluating the dynamic strength of a brazed joint, it is suggested that its use be considered for testing other types of pipe connections such as welded joints.
3. The geometric design deficiencies of cast bronze fittings should be overcome. An alternative coupling design having rounded reentrant corners and gradually changing sectional area is shown in Figure 11. The changes proposed in Figure 11 are equally applicable to all similar cast fittings.⁵

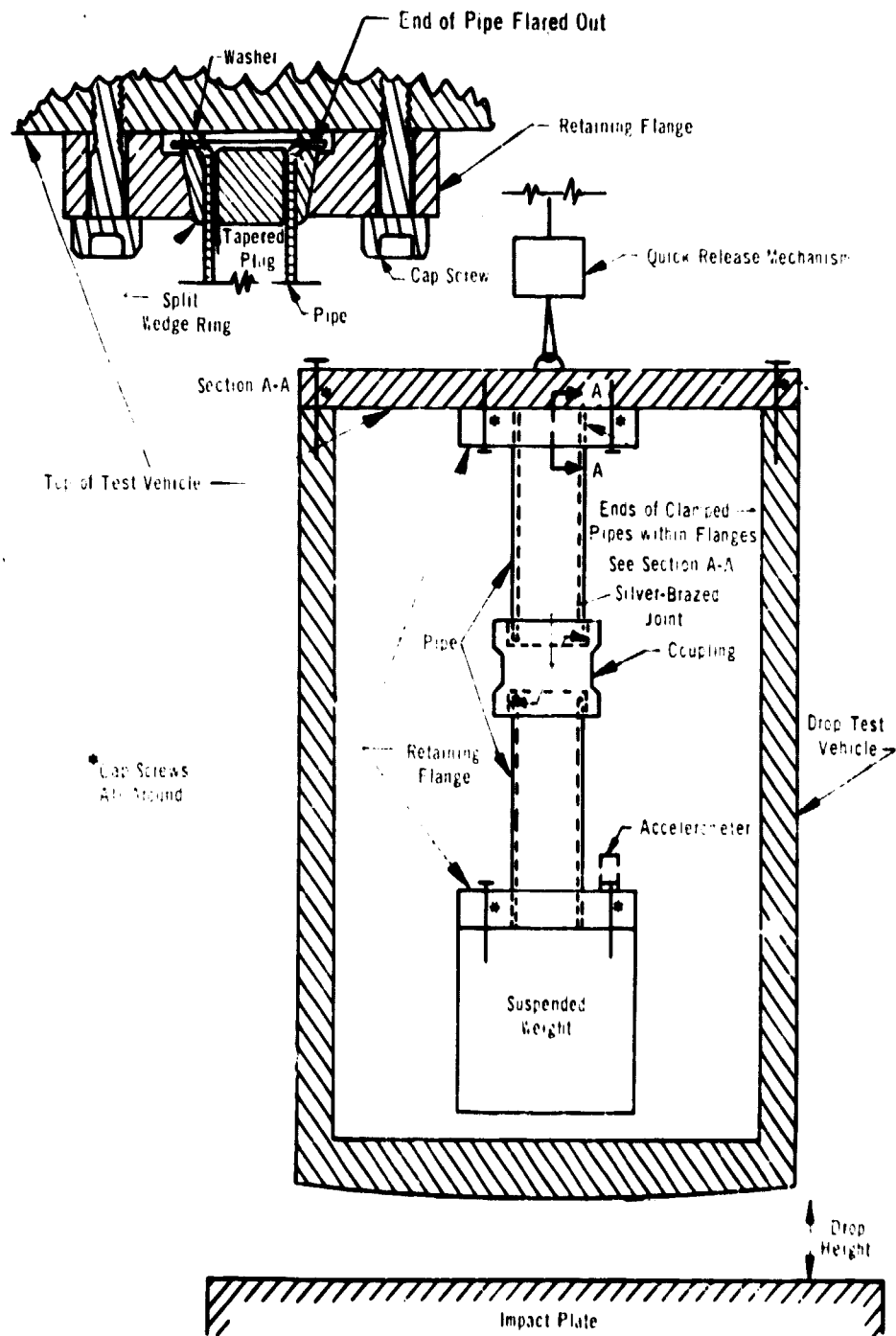


Figure 1 - Section of Drop Test Vehicle

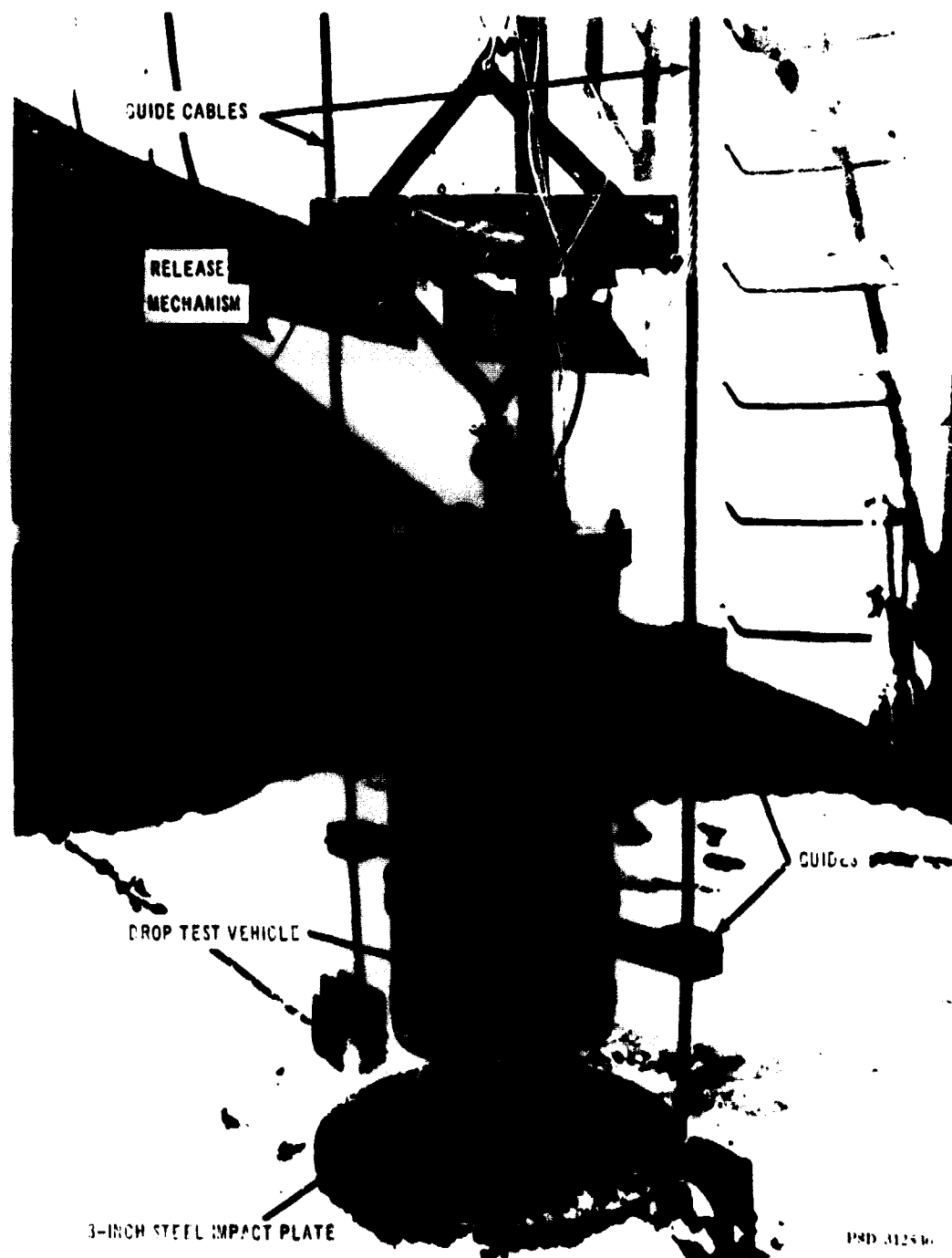


Figure 2 - Drop Test Vehicle Ready for Release

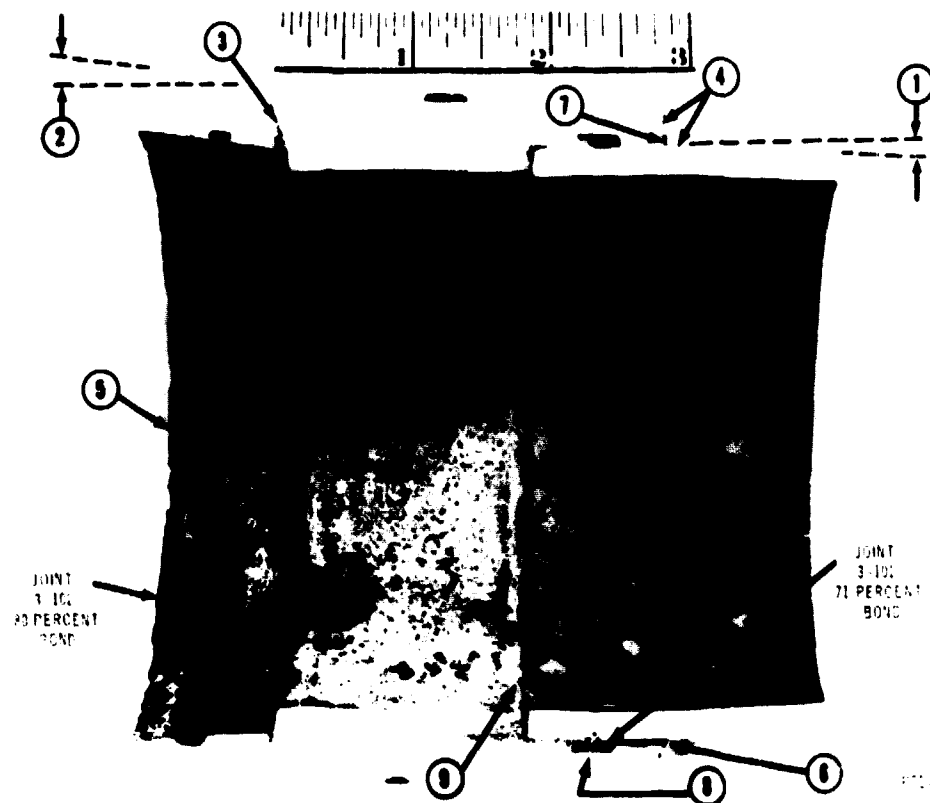


Figure 3 - Failed 3-Inch Specimen

Joint Numbers 3-101 and 3-102 were sawed longitudinally.

- ① Necking down of pipe
- ② Flaring out of coupling mouth
- ③ Cracking of coupling at reentrant corner of shoulder
- ④ Abrupt change in cross section at juncture of pipe and coupling
- ⑤ Complete bond failure
- ⑥ Incomplete bond failure
- ⑦ Extra bond area - fillet
- ⑧ Extra bond area in brass metal groove
- ⑨ Extra bond area at end of pipe

SPECIMEN 1-7 AND 1-8. DROP NO. 5 (2.5 IN)

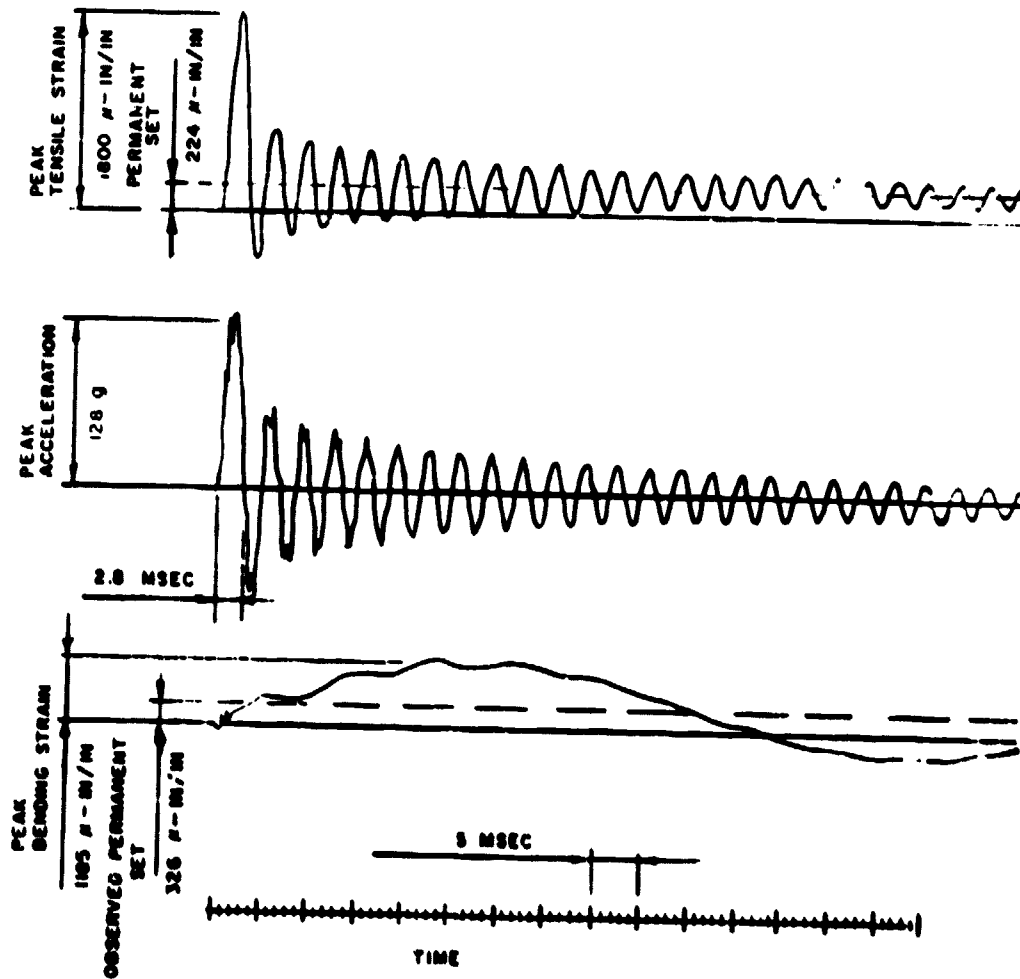


Figure 4 - Typical Record of Tensile Strain, Acceleration, and Bending Strain

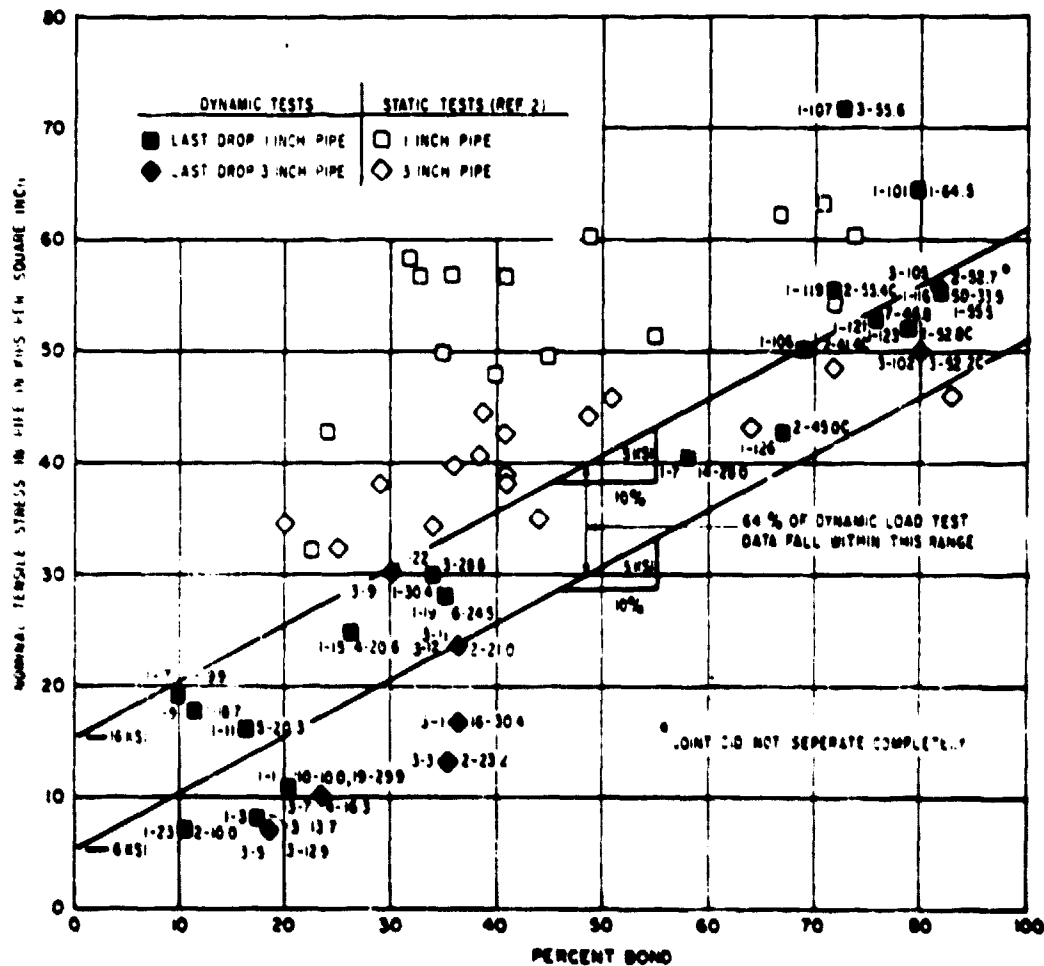


Figure 5 - Pipe Stress at Bond Failure

- Notes:
1. Number to the left of symbol indicates which joint failed.
 2. Numbers to the right of symbol indicate how many drops were made and the mean stress for the drops. Thus 3-58 means three drops, the average stress for the three being 58 ksi.
 3. The letter "C" indicates cracking of coupling.
 4. The two parallel lines are for comparison among Figures 4 through 7.

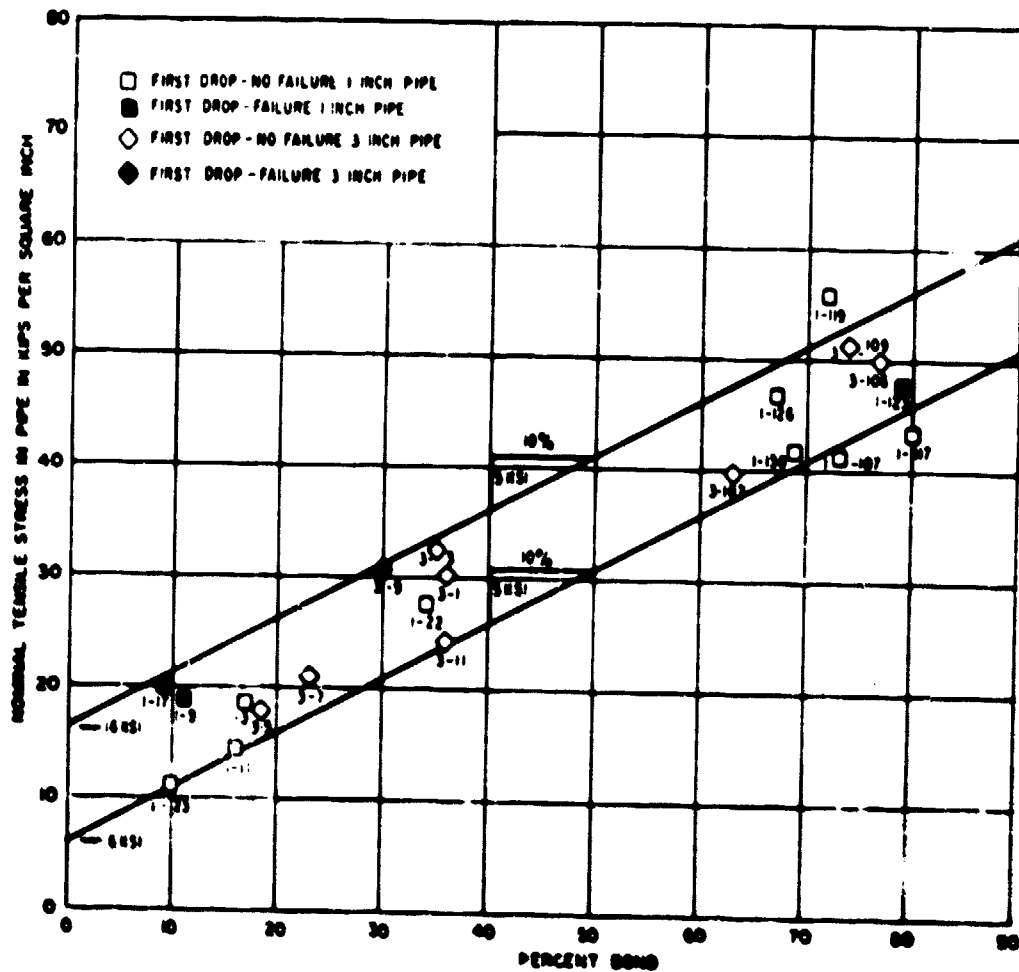


Figure 6 - Pipe Stress during Initial Drop

- Notes: 1. Some low stress values which resulted from small drops have been omitted.
 All failure stress values have been plotted.
2. Joint number is shown below symbol.
3. The two parallel lines are for comparison among Figures 5 through 7.

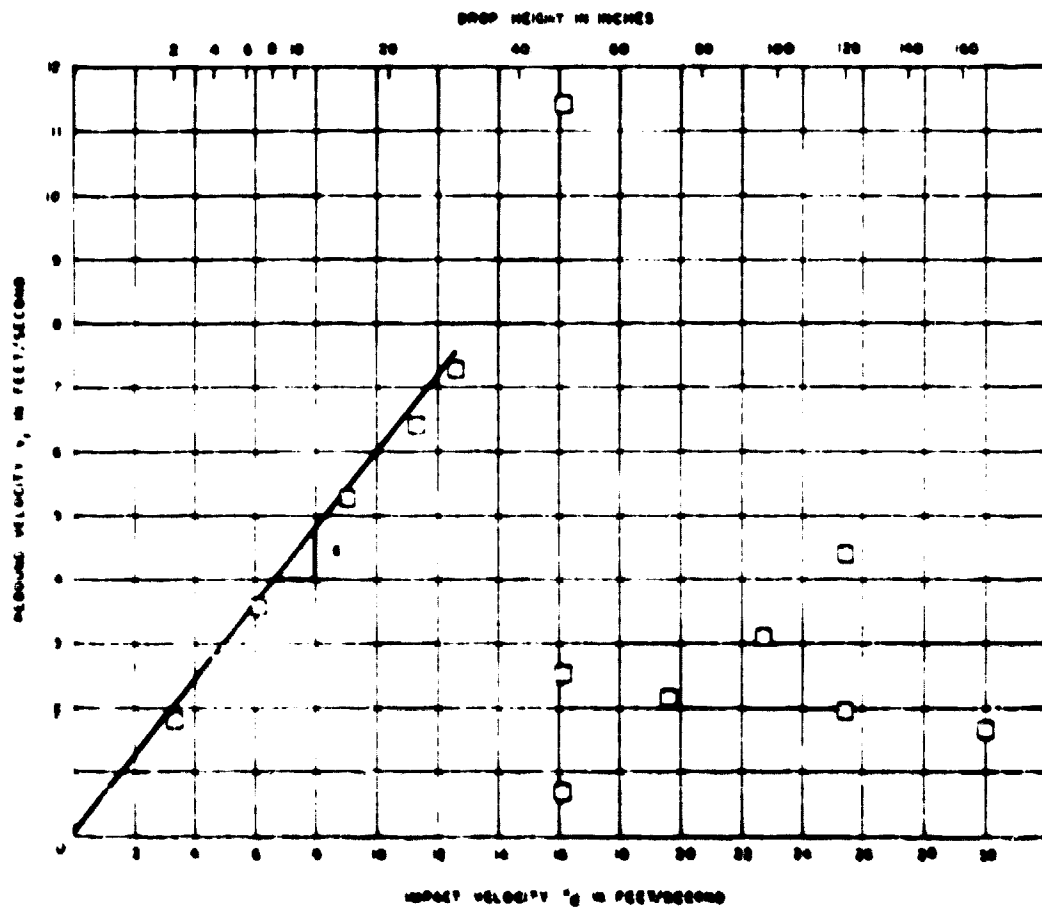


Figure 5 - Rebound Velocity versus Impact Velocity of Drop Test Vehicle

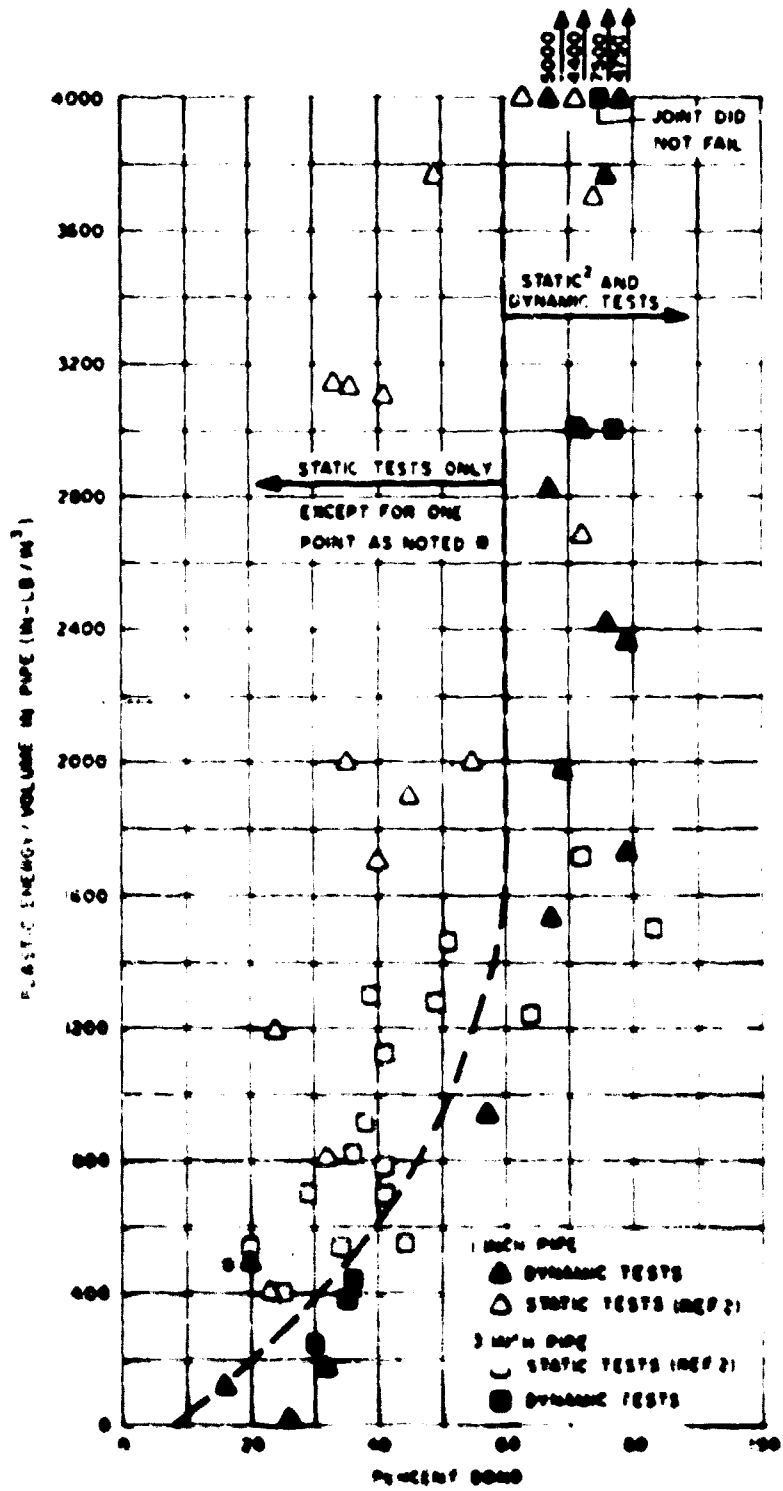


Figure 9 - Plastic Strain Energy per Unit Volume in Pipe at Joint Failure

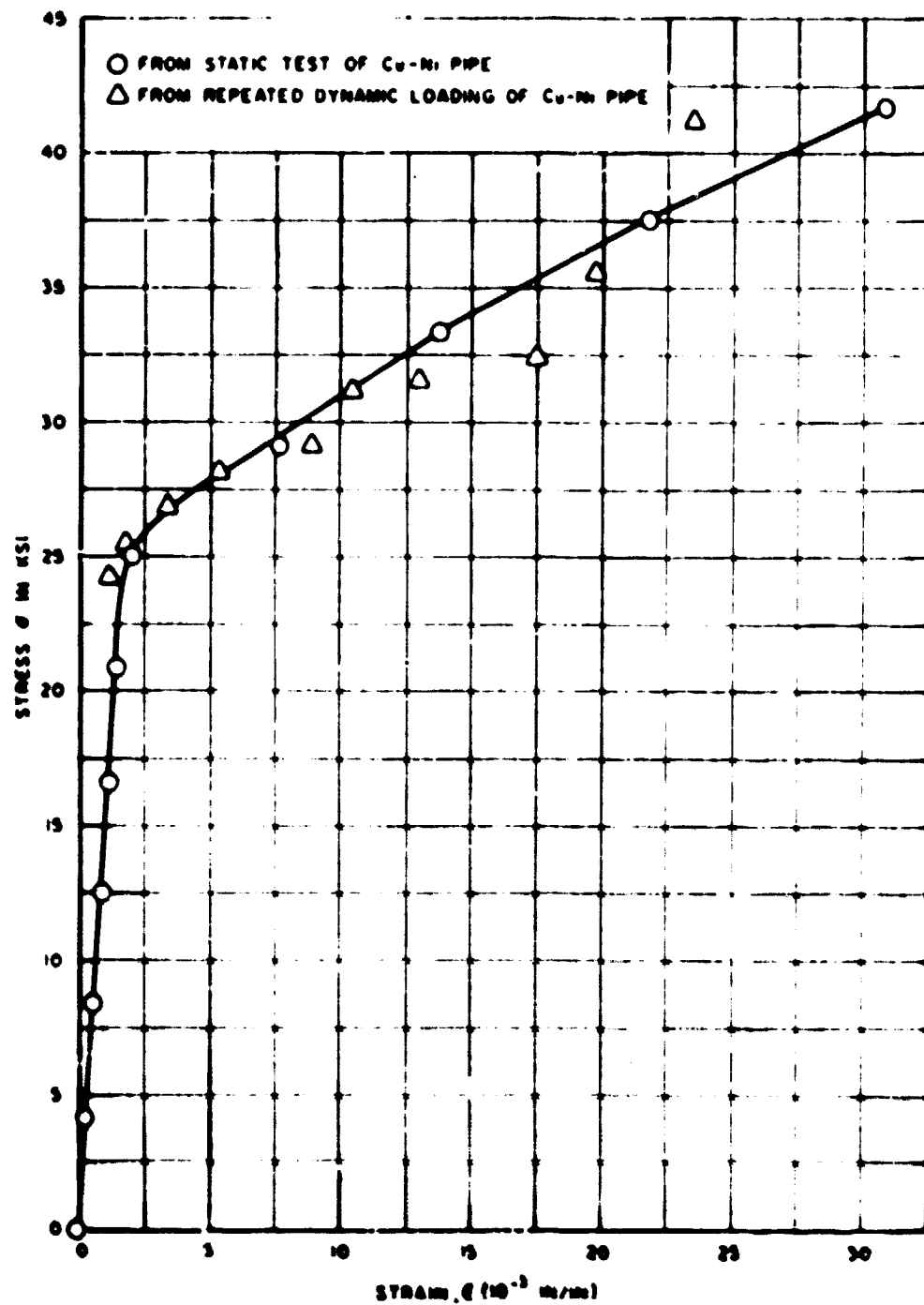
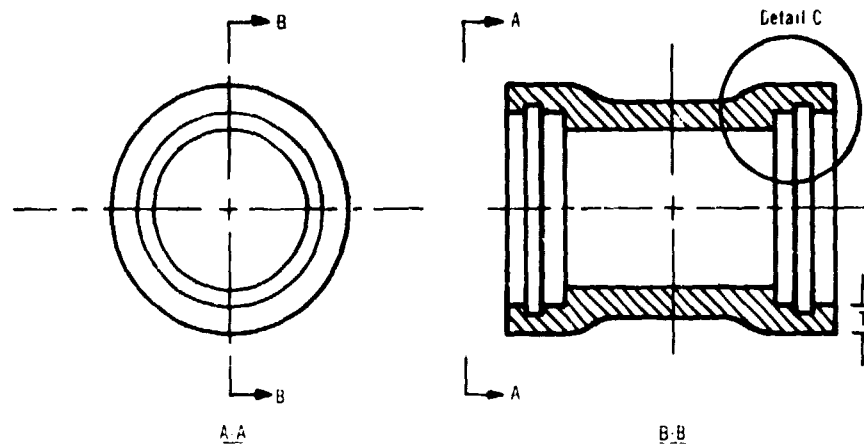
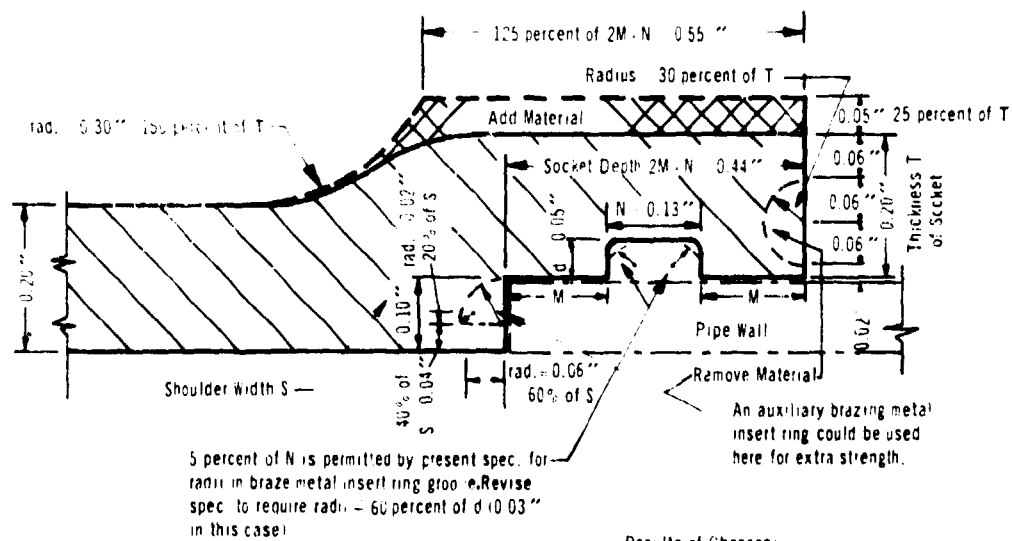


Figure 10 - Stress-Strain Data for Copper-Nickel Pipe from Static and Dynamic Tests



1-in. coupling per Ref. 5



Detail C
Scale 0.2" = 1.0"

Results of Changes:

1. Increase in weight of coupling ~ 17%
2. Increase in maximum diameter of coupling ~ 6%

Figure 11 – Proposed Coupling Design Changes

A 1-in. coupling has been chosen for purposes of illustration. The changes are applicable to other similar fittings, viz., elbows, crosses, and tees.

TABLE 1

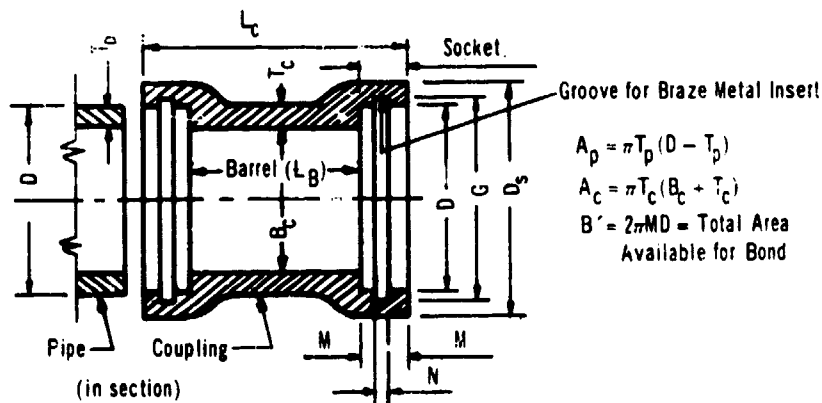
Dimensions and Areas of Pipe and Couplings

Pipe Size in.	Pipe Outside Diameter (max) D in.	Thickness		Coupling		Socket Diameter		Land Width M in.	Groove	
		Pipe (min) T_p in.	Coupling (min) T_c in.	Bore B_c in.	Length L_c in.	Outside (min) D_s in.	Inside (min) D in.		Diameter G in.	Width N in.
1	1.315	0.095	0.20	1.108	2.38	1.72	1.315	0.154	1.424	0.130
3	3.500	0.165	0.35	3.178	3.18	4.20	3.500	0.287	3.613	0.55

Dimensions of Pipe* and Couplings**

Pipe Size in.	Pipe Sectional Area A_p sq in.	Coupling Barrel Sectional Area A_c sq in.	100 Percent Bond Surface Area B' sq in.	$A_p:A_c:B'$
1	0.36	0.82	1.27	1:2.3:3.5
3	1.73	3.88	6.31	1:2.2:3.6

Areas of Pipe and Couplings



*Dimensions are from Reference 3.

**Dimensions are from Reference 5.

Year	Month	Day	Time	Location	Event	Participants	Results	Notes
1911	Aug	11	11:00					
1911	Aug	12	11:00					
1911	Aug	13	11:00					
1911	Aug	14	11:00					
1911	Aug	15	11:00					
1911	Aug	16	11:00					
1911	Aug	17	11:00					
1911	Aug	18	11:00					
1911	Aug	19	11:00					
1911	Aug	20	11:00					
1911	Aug	21	11:00					
1911	Aug	22	11:00					
1911	Aug	23	11:00					
1911	Aug	24	11:00					
1911	Aug	25	11:00					
1911	Aug	26	11:00					
1911	Aug	27	11:00					
1911	Aug	28	11:00					
1911	Aug	29	11:00					
1911	Aug	30	11:00					
1911	Aug	31	11:00					
1911	Aug	32	11:00					
1911	Aug	33	11:00					
1911	Aug	34	11:00					
1911	Aug	35	11:00					
1911	Aug	36	11:00					
1911	Aug	37	11:00					
1911	Aug	38	11:00					
1911	Aug	39	11:00					
1911	Aug	40	11:00					
1911	Aug	41	11:00					
1911	Aug	42	11:00					
1911	Aug	43	11:00					
1911	Aug	44	11:00					
1911	Aug	45	11:00					
1911	Aug	46	11:00					
1911	Aug	47	11:00					
1911	Aug	48	11:00					
1911	Aug	49	11:00					
1911	Aug	50	11:00					
1911	Aug	51	11:00					
1911	Aug	52	11:00					
1911	Aug	53	11:00					
1911	Aug	54	11:00					
1911	Aug	55	11:00					
1911	Aug	56	11:00					
1911	Aug	57	11:00					
1911	Aug	58	11:00					
1911	Aug	59	11:00					
1911	Aug	60	11:00					
1911	Aug	61	11:00					
1911	Aug	62	11:00					
1911	Aug	63	11:00					
1911	Aug	64	11:00					
1911	Aug	65	11:00					
1911	Aug	66	11:00					
1911	Aug	67	11:00					
1911	Aug	68	11:00					
1911	Aug	69	11:00					
1911	Aug	70	11:00					
1911	Aug	71	11:00					
1911	Aug	72	11:00					
1911	Aug	73	11:00					
1911	Aug	74	11:00					
1911	Aug	75	11:00					
1911	Aug	76	11:00					
1911	Aug	77	11:00					
1911	Aug	78	11:00					
1911	Aug	79	11:00					
1911	Aug	80	11:00					
1911	Aug	81	11:00					
1911	Aug	82	11:00					
1911	Aug	83	11:00					
1911	Aug	84	11:00					
1911	Aug	85	11:00					
1911	Aug	86	11:00					
1911	Aug	87	11:00					
1911	Aug	88	11:00					
1911	Aug	89	11:00					
1911	Aug	90	11:00					
1911	Aug	91	11:00					
1911	Aug	92	11:00					
1911	Aug	93	11:00					
1911	Aug	94	11:00					
1911	Aug	95	11:00					
1911	Aug	96	11:00					
1911	Aug	97	11:00					
1911	Aug	98	11:00					
1911	Aug	99	11:00					
1911	Aug	100	11:00					

Year	Month	Day	Time	Location	Event	Participants	Results	Notes
1911	Aug	101	11:00					
1911	Aug	102	11:00					
1911	Aug	103	11:00					
1911	Aug	104	11:00					
1911	Aug	105	11:00					
1911	Aug	106	11:00					
1911	Aug	107	11:00					
1911	Aug	108	11:00					
1911	Aug	109	11:00					
1911	Aug	110	11:00					
1911	Aug	111	11:00					
1911	Aug	112	11:00					
1911	Aug	113	11:00					
1911	Aug	114	11:00					
1911	Aug	115	11:00					
1911	Aug	116	11:00					
1911	Aug	117	11:00					
1911	Aug	118	11:00					
1911	Aug	119	11:00					
1911	Aug	120	11:00					
1911	Aug	121	11:00					
1911	Aug	122	11:00					
1911	Aug	123	11:00					
1911	Aug	124	11:00					
1911	Aug	125	11:00					
1911	Aug	126	11:00					
1911	Aug	127	11:00					
1911	Aug	128	11:00					
1911	Aug	129	11:00					
1911	Aug	130	11:00					
1911	Aug	131	11:00					
1911	Aug	132	11:00					
1911	Aug	133	11:00					
1911	Aug	134	11:00					
1911	Aug	135	11:00					
1911	Aug	136	11:00					
1911	Aug	137	11:00					
1911	Aug	138	11:00					
1911	Aug	139	11:00					
1911	Aug	140	11:00					
1911	Aug	141	11:00					
1911	Aug	142	11:00					
1911	Aug	143	11:00					
1911	Aug	144	11:00					
1911	Aug	145	11:00					
1911	Aug	146	11:00					
1911	Aug	147	11:00					
1911	Aug	148	11:00					
1911	Aug	149	11:00					
1911	Aug	150	11:00					
1911	Aug	151	11:00					
1911	Aug	152	11:00					
1911	Aug	153	11:00					
1911	Aug	154	11:00					
1911	Aug	155	11:00					
1911	Aug	156	11:00					
1911	Aug	157	11:00					
1911	Aug	158	11:00					
1911	Aug	159	11:00					
1911	Aug	160	11:00					
1911	Aug	161	11:00					
1911	Aug	162	11:00					
1911	Aug	163	11:00					
1911	Aug	164	11:00					
1911	Aug	165	11:00					
1911	Aug	166	11:00					
1911	Aug	167	11:00					
1911	Aug	168	11:00					
1911	Aug	169	11:00					
1911	Aug	170	11:00					
1911	Aug	171	11:00					
1911	Aug	172	11:00					
1911	Aug	173	11:00					
1911	Aug	174	11:00					
1911	Aug	175	11:00					
1911	Aug	176	11:00					
1911	Aug	177	11:00					
1911	Aug	178	11:00					
1911	Aug	179	11:00					
1911	Aug	180	11:00					
1911	Aug	181	11:00					
1911	Aug	182	11:00					
1911	Aug	183	11:00					
1911	Aug	184	11:00					
1911	Aug	185	11:00					
1911	Aug	186	11:00					
1911	Aug	187	11:00					
1911	Aug							

Page No.	Sectional Area (sq. ft.)	Length (ft.)	Volume (cu. ft.)	No. of Pages	No. of Records	No. of Records Obtained	No. of Records Deleted	Remarks
1	117	24	2808	1	26	26	0	
1	116	24	2784	1	26	26	0	
1	115	24	2760	1	26	26	0	
1	114	24	2736	1	26	26	0	
1	113	24	2712	1	26	26	0	
1	112	24	2688	1	26	26	0	
1	111	24	2664	1	26	26	0	
1	110	24	2640	1	26	26	0	
1	109	24	2616	1	26	26	0	
1	108	24	2592	1	26	26	0	
1	107	24	2568	1	26	26	0	
1	106	24	2544	1	26	26	0	
1	105	24	2520	1	26	26	0	
1	104	24	2496	1	26	26	0	
1	103	24	2472	1	26	26	0	
1	102	24	2448	1	26	26	0	
1	101	24	2424	1	26	26	0	
1	100	24	2400	1	26	26	0	
1	99	24	2376	1	26	26	0	
1	98	24	2352	1	26	26	0	
1	97	24	2328	1	26	26	0	
1	96	24	2304	1	26	26	0	
1	95	24	2280	1	26	26	0	
1	94	24	2256	1	26	26	0	
1	93	24	2232	1	26	26	0	
1	92	24	2208	1	26	26	0	
1	91	24	2184	1	26	26	0	
1	90	24	2160	1	26	26	0	
1	89	24	2136	1	26	26	0	
1	88	24	2112	1	26	26	0	
1	87	24	2088	1	26	26	0	
1	86	24	2064	1	26	26	0	
1	85	24	2040	1	26	26	0	
1	84	24	2016	1	26	26	0	
1	83	24	1992	1	26	26	0	
1	82	24	1968	1	26	26	0	
1	81	24	1944	1	26	26	0	
1	80	24	1920	1	26	26	0	
1	79	24	1896	1	26	26	0	
1	78	24	1872	1	26	26	0	
1	77	24	1848	1	26	26	0	
1	76	24	1824	1	26	26	0	
1	75	24	1800	1	26	26	0	
1	74	24	1776	1	26	26	0	
1	73	24	1752	1	26	26	0	
1	72	24	1728	1	26	26	0	
1	71	24	1704	1	26	26	0	
1	70	24	1680	1	26	26	0	
1	69	24	1656	1	26	26	0	
1	68	24	1632	1	26	26	0	
1	67	24	1608	1	26	26	0	
1	66	24	1584	1	26	26	0	
1	65	24	1560	1	26	26	0	
1	64	24	1536	1	26	26	0	
1	63	24	1512	1	26	26	0	
1	62	24	1488	1	26	26	0	
1	61	24	1464	1	26	26	0	
1	60	24	1440	1	26	26	0	
1	59	24	1416	1	26	26	0	
1	58	24	1392	1	26	26	0	
1	57	24	1368	1	26	26	0	
1	56	24	1344	1	26	26	0	
1	55	24	1320	1	26	26	0	
1	54	24	1296	1	26	26	0	
1	53	24	1272	1	26	26	0	
1	52	24	1248	1	26	26	0	
1	51	24	1224	1	26	26	0	
1	50	24	1200	1	26	26	0	
1	49	24	1176	1	26	26	0	
1	48	24	1152	1	26	26	0	
1	47	24	1128	1	26	26	0	
1	46	24	1104	1	26	26	0	
1	45	24	1080	1	26	26	0	
1	44	24	1056	1	26	26	0	
1	43	24	1032	1	26	26	0	
1	42	24	1008	1	26	26	0	
1	41	24	984	1	26	26	0	
1	40	24	960	1	26	26	0	
1	39	24	936	1	26	26	0	
1	38	24	912	1	26	26	0	
1	37	24	888	1	26	26	0	
1	36	24	864	1	26	26	0	
1	35	24	840	1	26	26	0	
1	34	24	816	1	26	26	0	
1	33	24	792	1	26	26	0	
1	32	24	768	1	26	26	0	
1	31	24	744	1	26	26	0	
1	30	24	720	1	26	26	0	
1	29	24	696	1	26	26	0	
1	28	24	672	1	26	26	0	
1	27	24	648	1	26	26	0	
1	26	24	624	1	26	26	0	
1	25	24	600	1	26	26	0	
1	24	24	576	1	26	26	0	
1	23	24	552	1	26	26	0	
1	22	24	528	1	26	26	0	
1	21	24	504	1	26	26	0	
1	20	24	480	1	26	26	0	
1	19	24	456	1	26	26	0	
1	18	24	432	1	26	26	0	
1	17	24	408	1	26	26	0	
1	16	24	384	1	26	26	0	
1	15	24	360	1	26	26	0	
1	14	24	336	1	26	26	0	
1	13	24	312	1	26	26	0	
1	12	24	288	1	26	26	0	
1	11	24	264	1	26	26	0	
1	10	24	240	1	26	26	0	
1	9	24	216	1	26	26	0	
1	8	24	192	1	26	26	0	
1	7	24	168	1	26	26	0	
1	6	24	144	1	26	26	0	
1	5	24	120	1	26	26	0	
1	4	24	96	1	26	26	0	
1	3	24	72	1	26	26	0	
1	2	24	48	1	26	26	0	
1	1	24	24	1	26	26	0	

Sectional area of page 1 is 16 sq. ft. and 1.3 sq. ft. for 1- and 2-in. dia. respectively.

**Pages moved within flanges during Dupes E-10.

***Clear length - length of coupling only.

† Estimate no records.

†† Points located, but did not separate completely.

††† Spacing was shortened between Dupes E-1 and E-2.

Note 1. Minimum temperature was no less than about 35 deg. F. maximum no greater than 110 deg. F.

Note 2. When needed side ... underlined, then either post-failed. Section was not tested to destruction because of irregular ends within return of flanges.

TABLE 3
Pipe Loads at Bond Failure - Static Test Data*

1-Inch Pipe			3 Inch Pipe		
Percent Bond (Ultrasonic Inspection)	Ultimate Tensile Force kip	Ultimate Tensile Stress in Pipe kip/in ²	Percent Bond (Ultrasonic Inspection)	Ultimate Tensile Force kip	Ultimate Tensile Stress in Pipe kip/in ²
27	11.6	32.4	20	40.5	35.0
24	15.7	43.4	25	52.0	32.9
			29	47.0	38.7
32	16.3	50.8			
37	20.7	57.5	34	46.5	35.0
35	16.2	51.5	36	64.5	46.2
34	20.7	57.5	36	71.0	41.9
			39	78.0	45.1
40	17.5	48.6			
42	20.6	57.2	41	67.0	38.7
			41	66.	39.3
			41	74.5	45.1
			44	61.5	35.5
45	16.	51.			
44	21.9	61.7	42	77.	44.5
			51	80.7	46.2
44	14.6	51.1			
			44	75.1	43.4
47	22.5	62.5			
51	21.9	63.6			
51	19.4	54.4	52	74.5	46.6
54	21.8	61.5			
			63	76.5	46.0

*From Reference 1, p. 2.

TABLE 4
Comparison of Ultrasonically and Visually Obtained Bond Percentage

Pipe Size	Number	Percent Bond		Difference V-U	Difference $\frac{V-U}{U}$
		Ultrasonic (U)	Visual (V)		
1	13	17	33	+16	+94
	219	35	31	-4	-11
	143	10	11	+1	+10
3	33	35	27	-8	-23
	15	11	17	+6	+55
5	1101	40	35	-5	-13
	1116	42	41	-1	-2
	1123	29	42	+13	+44
	1126	47	36	-11	-23
5	1122	4	42	+38	+95

TABLE 5
Flexibilities of "Parts" of Specimens

Characteristic	Pipe Size	Pipe	Coupling Barrel	Joint
Length	1-in. 1-in. 1-in. 3-in.	L_p Clear Length of Pipe Section 4.56 in. 2.50 in. 0 3.16 in.	L_{11} Length of Coupling Barrel (See Table 1) 1.94 in. 1.94 in. 1.94 in. 2.35 in.	L_c Depth of Socket (See Table 1) 2M - N 0.44 in. 0.44 in. 0.44 in. 0.83 in.
Area	1-in. 3-in.	A_p Sectional Area of Pipe (See Table 1) 0.36 in. ² 1.73 in. ²	A_{11} Sectional Area of Coupling Barrel (See Table 1) 0.82 in. ² 3.88 in. ²	A_c Sectional Area of Socket (min.) (See Table 1) $\frac{\pi}{4} (D_c^2 - G_c^2)$ 0.73 in. ² 3.61 in. ² B Surface Area of Bond (See Table 1) Percent Bond = 100 Percent Bond Area
Elastic Modulus (Minimum)		E_p Tensile Modulus $22 \cdot 10^6 \frac{lb}{in^2}$	E_c Tensile Modulus $13 \cdot 10^6 \frac{lb}{in^2}$	G Shear Modulus of Bond (Assumed) $5 \cdot 10^6 \frac{lb}{in^2}$
Flexibility	1-in. 1-in. 1-in. 3-in.	F_p Pipe Flexibility $\frac{2L_p}{E_p A_p}$ $1.15 \cdot 10^{-6} \frac{in}{lb}$ $0.63 \cdot 10^{-6} \frac{in}{lb}$ 0 $0.166 \cdot 10^{-6} \frac{in}{lb}$	F_{11} Flexibility of Coupling Barrel $\frac{L_{11}}{E_c A_{11}}$ $0.182 \cdot 10^{-6} \frac{in}{lb}$ $0.182 \cdot 10^{-6} \frac{in}{lb}$ $0.182 \cdot 10^{-6} \frac{in}{lb}$ $0.0465 \cdot 10^{-6} \frac{in}{lb}$	F_j Joint Flexibility (Approximate) $\frac{2L_c}{E_p A_p + E_c A_c + GB}$ $= \frac{0.88}{17.41 + 6.35U} \cdot 10^{-6}$ do do $\frac{1.66}{56.1 + 31.6U}$

Clear Length of Pipe Coupling Barrel Coupling Socket Portion of Pipe in Socket

Pipe Clamped with Flange at Each End of Specimen

* This approximate expression includes the effects of pipe and bronze metal included within socket and should not be considered valid for values of percent bond below about 5.

TABLE 6
Approximate Relationships among Flexibilities of "Parts" of Typical Specimens

Specimen Size	Mean Percent Bond of Two Joints (U)	Pipe			Flexibility				$F_P \cdot F_B \cdot F_J$ $\cdot 10^{-6} \frac{\text{in}}{\text{lb}}$
		Pipe		Coupling Barrel		Joint			
		$F_P \cdot 10^{-6} \frac{\text{in}}{\text{lb}}$	$\frac{F_P}{F}$ Percent	$F_B \cdot 10^{-6} \frac{\text{in}}{\text{lb}}$	$\frac{F_B}{F}$ Percent	$F_J \cdot 10^{-6} \frac{\text{in}}{\text{lb}}$	$\frac{F_J}{F}$ Percent		
1-in. Diameter 11.6 in. Long	20	1.152	83.4	0.182	13.2	0.047	3.4	1.381	
	40	→	83.6	→	13.2	0.044	3.2	1.378	
	60	→	83.7	→	13.2	0.043	3.1	1.377	
	80	→	83.9	→	13.3	0.039	2.8	1.373	
1-in. Diameter 6.94 in. Long	20	0.631	73.4	0.182	21.2	0.047	5.5	0.860	
	40	→	73.6	→	21.2	0.044	5.1	0.857	
	60	→	73.7	→	21.3	0.043	5.0	0.856	
	80	→	74.1	→	21.4	0.039	4.6	0.852	
2-in. Diameter 3.94 in. Long	20	0	0	0.182	79.5	0.047	20.5	0.229	
	40	→	→	→	80.5	0.044	19.5	0.225	
	60	→	→	→	81.6	0.041	18.4	0.223	
	80	→	→	→	82.4	0.039	17.6	0.221	
3-in. Diameter 5.67 in. Long	20	0.166	83.5	0.047	19.6	0.027	11.3	0.240	
	40	→	80.1	→	19.6	0.024	10.1	0.237	
	60	→	70.7	→	20.0	0.022	9.4	0.235	
	80	→	71.3	→	20.7	0.020	8.6	0.233	

ACKNOWLEDGMENTS

The writer wishes to express his gratitude to Mr. D. E. Wilcox, Piping Coordinator, Mare Island Brazing Project, for supplying the test specimens and publications and data from the Brazing Project.

This project was conceived and initiated in the Shock Branch, David Taylor Model Basin, by Messrs. R. E. Converse and H. L. Rich, to whom, and to Mr. R. L. Bort, the writer is indebted for direction, advice, and criticism.

Thanks are also due to Messrs. H. P. Hashmall, G. Junkin II, K. P. Shorrock, and P. Yarnall for performing tests, reducing data, and assisting in the preparation of the report.

REFERENCES

1. "Fabrication, Silver Brazing, and Inspection of Piping Systems," NAVSHIPS Report 250-634-6 (INTERIM) (Oct 1963).
2. Kurka, J., "Silver Brazing Project Progress Report," Mare Island Naval Shipyard Report 260A-27-63 (Oct 1963).
3. Military Specification, Tube, 70-30 and 90-10 Copper-Nickel Alloy, Seamless and Welded, MIL-T-1640H, (Jan 1963).
4. Military Specification, Bronze, Valve; Castings, MIL-B-16541A(Wep), (May 1961).
5. Fittings, Bronze, Silver Brazing Alloy, for Water, Oil, and Gas, BuShips Drawing 5000-54823-1385766, Revision H, Sheet 1 (Jan 1955).
6. Military Specification, Brazing Alloys, Silver, MIL-B-15395A(Ships), (Mar 1959).
7. Austin, J.J., et al., "Tests of Silver Brazed Joints," Report to Mare Island Naval Shipyard by Westinghouse Electric Corporation, Prepared under Contract N°28-(221)64290(X) (FBM) (Dec 1963).

INITIAL DISTRIBUTION

Copies

- 16 CHBUSHIPS
 - 3 Tech Lib (Code 210L)
 - 1 Lab Mgt Div (Code 320)
 - 1 Struc, Ship Protec, Hul: Malls & Fab Sec (Code 341A)
 - 3 Ship Protec Div (Code 423)
 - 1 Mach Arrgt & Power Piping Sec (Code 434)
 - 1 Sub Br (Code 525)
 - 1 Malls Dev & Appl Br (Code 634b)
 - 2 Mach Arrgt & Piping Sys Br (Code 643)
 - 1 Navy Indus Fac & Proc Equip Div (Code 770)
 - 1 Nuclear Propul (Code 1500)
- 1 CONSUBPAC
- 1 CONSUBLANT
- 1 DEPCONSUBLANT
- 1 USNMEL
- 1 NAVSHIPYD CHASN
- 3 NAVSHIPYD MARE (Code 260A)
- 1 NAVSHIPYD NORVA
- 1 NAVSHIPYD PEARL
- 1 NAVSHIPYD SFRAN
- 1 NAVSHIPYD PTSMH
- 1 SUPSHIP CAMDEN
- 1 SUPSHIP GROTON
- 1 SUPSHIP NPTNWS
- 1 SUPSHIP PASCAGOULA
- 20 CDR, DDC

UNCLASSIFIED

Security Classification

DOCUMENT CONTROL DATA - R&D

(Security classification of title, body of abstract and indexing annotation must be entered when the overall report is classified)

1 ORIGINATING ACTIVITY (Corporate author) Department of the Navy David Taylor Model Basin, Washington, D.C.		2a. REPORT SECURITY CLASSIFICATION	
		2b. GROUP	
3 REPORT TITLE STRENGTH OF SILVER-BRAZED PIPE JOINTS UNDER DYNAMIC LOAD			
4 DESCRIPTIVE NOTES (Type of report and inclusive dates) Final			
5 AUTHOR(S) (Last name, first name, initial) Zilliacus, Stephen			
6 REPORT DATE April 1965		7a. TOTAL NO. OF PAGES 29p.	7b. NO. OF REFS 7
8a. CONTRACT OR GRANT NO		8b. ORIGINATOR'S REPORT NUMBER(S) 1972	
b. PROJECT NO S-F013 10 01		9a. OTHER REPORT NO(S) (Any other numbers that may be assigned this report)	
c. Task 3974			
d.			
10 AVAILABILITY/LIMITATION NOTICES Qualified requesters may attain copies of this report from DDC.			
11 SUPPLEMENTARY NOTES		12. SPONSORING MILITARY ACTIVITY Department of the Navy Bureau of Ships, Washington, D.C.	
13 ABSTRACT Destructive dynamic load tests were conducted on specimens of copper-nickel pipe joined to bronze couplings by Grade II silver-braze alloy bonds. The bond areas varied from 9 to 85 percent of the total surfaces available for bonding. Every failure occurred in the bond. Cracking of the coupling sometimes accompanied bond failure. In no case was there rupture of the pipe. Since many joint failures apparently were influenced by a coupling geometry with abrupt changes in cross section, a modified coupling design is proposed. The dynamic forces required to produce failure of silver-brazed joints having less than 40 percent bond were considerably smaller than static failure loads in tests conducted elsewhere on similar specimens. For joints with more than about 60 percent bond, the dynamic force values were of the same magnitude as the static loads. Joints having more than 60 percent bond failed only after considerable elongation of the pipe. For sufficiently great initial dynamic force, joint failure occurred immediately; otherwise two or more loadings were required. Impact velocities associated with joint failures ranged from about 1.6 to about 31 fps. It appears that the current practice of rejecting joints having less than 60 percent bond is justified for dynamic loading.			

DD FORM 1473
1 JAN 64

ENCLOSURE 1)

UNCLASSIFIED

Security Classification

Best Available Co

14. KEY WORDS	LINK A		LINK B		LINK C	
	ROLE	WT	ROLE	WT	ROLE	WT
Bronze Coupling Bond Copper-Nickel Pipe Joint Drop Test Ductility Dynamic Load Percent Bond Plastic Strain Energy Shock Loading Shear Stress Silver-Brazed Joints Static Load Strength						
Tensile Stress Ultrasonic Inspection						

INSTRUCTIONS

1. **ORIGINATING ACTIVITY:** Enter the name and address of the contractor, subcontractor, grantee, Department of Defense activity or other organization (*corporate author*) issuing the report.
- 2a. **REPORT SECURITY CLASSIFICATION:** Enter the overall security classification of the report. Indicate whether "Restricted Data" is included. Marking is to be in accordance with appropriate security regulations.
- 2b. **GROUP:** Automatic downgrading is specified in DoD Directive 5200.10 and Armed Forces Industrial Manual. Enter the group number. Also, when applicable, show that optional markings have been used for Group 3 and Group 4 as authorized.
3. **REPORT TITLE:** Enter the complete report title in all capital letters. Titles in all cases should be unclassified. If a meaningful title cannot be selected without classification, show title classification in all capitals in parentheses immediately following the title.
4. **DESCRIPTIVE NOTES:** If appropriate, enter the type of report, e.g., interim, progress, summary, annual, or final. Give the inclusive dates when a specific reporting period is covered.
5. **AUTHOR(S):** Enter the name(s) of author(s) as shown on or in the report. Enter last name, first name, middle initial. If military, show rank and branch of service. The name of the principal author is an absolute minimum requirement.
6. **REPORT DATE:** Enter the date of the report as day, month, year, or month, year. If more than one date appears on the report, use date of publication.
- 7a. **TOTAL NUMBER OF PAGES:** The total page count should follow normal pagination procedures, i.e., enter the number of pages containing information.
- 7b. **NUMBER OF REFERENCES:** Enter the total number of references cited in the report.
- 8a. **CONTRACT OR GRANT NUMBER:** If appropriate, enter the applicable number of the contract or grant under which the report was written.
- 8b, c, & 8d. **PROJECT NUMBER:** Enter the appropriate military department identification, such as project number, subproject number, system numbers, task number, etc.
- 9a. **ORIGINATOR'S REPORT NUMBER(S):** Enter the official report number by which the document will be identified and controlled by the originating activity. This number must be unique to this report.
- 9b. **OTHER REPORT NUMBER(S):** If the report has been assigned any other report numbers (*either by the originator or by the sponsor*), also enter this number(s).
10. **AVAILABILITY/LIMITATION NOTICES:** Enter any limitations on further dissemination of the report, other than those

imposed by security classification, using standard statements such as:

- (1) "Qualified requesters may obtain copies of this report from DDC."
- (2) "Foreign announcement and dissemination of this report by DDC is not authorized."
- (3) "U. S. Government agencies may obtain copies of this report directly from DDC. Other qualified DDC users shall request through _____."
- (4) "U. S. military agencies may obtain copies of this report directly from DDC. Other qualified users shall request through _____."
- (5) "All distribution of this report is controlled. Qualified DDC users shall request through _____."

If the report has been furnished to the Office of Technical Services, Department of Commerce, for sale to the public, indicate this fact and enter the price, if known.

11. **SUPPLEMENTARY NOTES:** Use for additional explanatory notes.
12. **SPONSORING MILITARY ACTIVITY:** Enter the name of the departmental project office or laboratory sponsoring (*paying for*) the research and development. Include address.
13. **ABSTRACT:** Enter an abstract giving a brief and factual summary of the document indicative of the report, even though it may also appear elsewhere in the body of the technical report. If additional space is required, a continuation sheet shall be attached.

It is highly desirable that the abstract of classified reports be unclassified. Each paragraph of the abstract shall end with an indication of the military security classification of the information in the paragraph, represented as (TS), (SI), (C), or (U).

There is no limitation on the length of the abstract. However, the suggested length is from 150 to 225 words.

14. **KEY WORDS:** Key words are technically meaningful terms or short phrases that characterize a report and may be used as index entries for cataloging the report. Key words must be selected so that no security classification is required. Identifiers, such as equipment model designation, trade name, military project code name, geographic location, may be used as key words but will be followed by an indication of technical context. The assignment of links, roles, and weights is optional.

<p>David Taylor Model Basin. Report 1972. STRENGTH OF SILVER-BRAZED PIPE JOINTS UNDER DYNAMIC LOAD. by Stephen Zilliacus. Apr 1965. 101, 29p. illus., charts, graphs, tables, refs.</p> <p style="text-align: center;">UNCLASSIFIED</p> <p>Destructive dynamic load tests were conducted on specimens of copper-nickel pipe joined to bronze couplings by Grade III silver-braze alloy bonds. The bond areas varied from 9 to 50 percent of the total surfaces available for bonding. Every failure occurred in the bond. Cracking of the coupling sometimes accompanied bond failure. In no case was there rupture of the pipe. Since many joint failures apparently were influenced by a coupling geometry with abrupt changes in cross section, a modified coupling design is proposed.</p>	<p>1. Pipe joints--Strength 2. Silver brazing Effectiveness 3. Joints--Dynamic loading --Test methods I. Zilliacus, Stephen II. S.F. 10119, Task 3974</p>	<p>1. Pipe joints--Strength 2. Silver brazing Effectiveness 3. Joints--Dynamic loading --Test methods I. Zilliacus, Stephen II. S.F. 10119, Task 3974</p>
<p>David Taylor Model Basin. Report 1972. STRENGTH OF SILVER-BRAZED PIPE JOINTS UNDER DYNAMIC LOAD. by Stephen Zilliacus. Apr 1965. 101, 29p. illus., charts, graphs, tables, refs.</p> <p style="text-align: center;">UNCLASSIFIED</p> <p>Destructive dynamic load tests were conducted on specimens of copper-nickel pipe joined to bronze couplings by Grade III silver-braze alloy bonds. The bond areas varied from 9 to 50 percent of the total surfaces available for bonding. Every failure occurred in the bond. Cracking of the coupling sometimes accompanied bond failure. In no case was there rupture of the pipe. Since many joint failures apparently were influenced by a coupling geometry with abrupt changes in cross section, a modified coupling design is proposed.</p>	<p>1. Pipe joints--Strength 2. Silver brazing Effectiveness 3. Joints--Dynamic loading --Test methods I. Zilliacus, Stephen II. S.F. 10119, Task 3974</p>	<p>David Taylor Model Basin. Report 1972. STRENGTH OF SILVER-BRAZED PIPE JOINTS UNDER DYNAMIC LOAD. by Stephen Zilliacus. Apr 1965. 101, 29p. illus., charts, graphs, tables, refs.</p> <p style="text-align: center;">UNCLASSIFIED</p> <p>Destructive dynamic load tests were conducted on specimens of copper-nickel pipe joined to bronze couplings by Grade III silver-braze alloy bonds. The bond areas varied from 9 to 50 percent of the total surfaces available for bonding. Every failure occurred in the bond. Cracking of the coupling sometimes accompanied bond failure. In no case was there rupture of the pipe. Since many joint failures apparently were influenced by a coupling geometry with abrupt changes in cross section, a modified coupling design is proposed.</p>

The dynamic forces required to produce failure of silver-braced joints having less than 40 percent bond were considerably smaller than static failure loads in tests conducted elsewhere on similar specimens. For joints with more than about 60 percent bond, the dynamic force values were of the same magnitude as the static loads.

Joints having more than 60 percent bond failed only after considerable elongation of the pipe. For sufficiently great initial dynamic force, joint failure occurred immediately; otherwise two or more loadings were required. Impact velocities associated with joint failures ranged from about 1.6 to about 31 fps.

It appears that the current practice of rejecting joints having less than 60 percent bond is justified for dynamic loading.

The dynamic forces required to produce failure of silver-braced joints having less than 40 percent bond were considerably smaller than static failure loads in tests conducted elsewhere on similar specimens. For joints with more than about 60 percent bond, the dynamic force values were of the same magnitude as the static loads.

Joints having more than 60 percent bond failed only after considerable elongation of the pipe. For sufficiently great initial dynamic force, joint failure occurred immediately; otherwise two or more loadings were required. Impact velocities associated with joint failures ranged from about 1.6 to about 31 fps.

It appears that the current practice of rejecting joints having less than 60 percent bond is justified for dynamic loading.

The dynamic forces required to produce failure of silver-braced joints having less than 40 percent bond were considerably smaller than static failure loads in tests conducted elsewhere on similar specimens. For joints with more than about 60 percent bond, the dynamic force values were of the same magnitude as the static loads.

Joints having more than 60 percent bond failed only after considerable elongation of the pipe. For sufficiently great initial dynamic force, joint failure occurred immediately; otherwise two or more loadings were required. Impact velocities associated with joint failures ranged from about 1.6 to about 31 fps.

It appears that the current practice of rejecting joints having less than 60 percent bond is justified for dynamic loading.

The dynamic forces required to produce failure of silver-braced joints having less than 40 percent bond were considerably smaller than static failure loads in tests conducted elsewhere on similar specimens. For joints with more than about 60 percent bond, the dynamic force values were of the same magnitude as the static loads.

Joints having more than 60 percent bond failed only after considerable elongation of the pipe. For sufficiently great initial dynamic force, joint failure occurred immediately; otherwise two or more loadings were required. Impact velocities associated with joint failures ranged from about 1.6 to about 31 fps.

It appears that the current practice of rejecting joints having less than 60 percent bond is justified for dynamic loading.