

UNCLASSIFIED

AD NUMBER
AD479143
NEW LIMITATION CHANGE
TO Approved for public release, distribution unlimited
FROM Distribution authorized to U.S. Gov't. agencies and their contractors; Administrative/Operational Use; JUN 1963. Other requests shall be referred to U.S. Army Tank-Automotive Center, Warren, MI.
AUTHORITY
USATACOM ltr, 3 Jun 1983

THIS PAGE IS UNCLASSIFIED

RAVE-II

96

REMOTE AREA VEHICLE EVALUATION

Adj 479143



TECHNICAL LIBRARY
REFERENCE COPY

Tomahawk Hills, Pontiac, Michigan

13 June 1963

20050407106

SYSTEMS CONCEPT BRANCH
SYSTEMS REQUIREMENTS & CONCEPT DIVISION
RESEARCH & ENGINEERING DIRECTORATE
ARMY TANK - AUTOMOTIVE CENTER

Best Available Copy

R A V E II

REMOTE AREA VEHICLE EVALUATION

Prepared by

Mr. R. R. Gay

Lt. M. Kovia

Project Direction by

P. T. Garland

Reviewed by

H. L. Hayter

U. S. ARMY TANK AUTOMOTIVE CENTER

RESEARCH & ENGINEERING DIRECTORATE

13 JUNE 1963

INTRODUCTION

OPERATION RAVE II was Phase I of a review meeting on development of a 1/4 ton mechanical load carrying device. Both industry and Government personnel participated in this phase at Tomahawk Hills and Galloway Lake, Pontiac, Michigan on 13 June 1963.

Phase II on 14 June 1963 consisted of a review meeting at ATAC in which only representatives of various Government agencies participated to discuss present and future developments necessary to meet the SDR requirements for the device.

It is hoped that consolidation of essential data of vehicles which participated will help everyone concerned to develop more mobile ground equipment for our fighting men.

PURPOSE

The purpose of RAVE II was to bring together for a limited evaluation, vehicles of commercial and military design responsive to logistical support of small fighting units in remote areas. Assembling the equipment into one area and operating over identical terrain provided the Department of Defense technical personnel an opportunity to see the equipment operating over natural obstacles.

For manufacturers of the equipment, RAVE II provided an opportunity to demonstrate some of the capabilities of their vehicles to personnel of various Government agencies in one place at one time.

To add realism, no rehearsals or "dry runs" of RAVE II were conducted. Much of the terrain over which the vehicles operated had not been disturbed by man for considerable periods of time. Many of the vehicles were at Tomahawk Hills for the first time and many of the drivers had never driven vehicles in this particular area before.

The beach at Galloway Lake was also in its natural condition. All vehicles were "on their own" as no ramps were provided for water entry or exit.

BACKGROUND

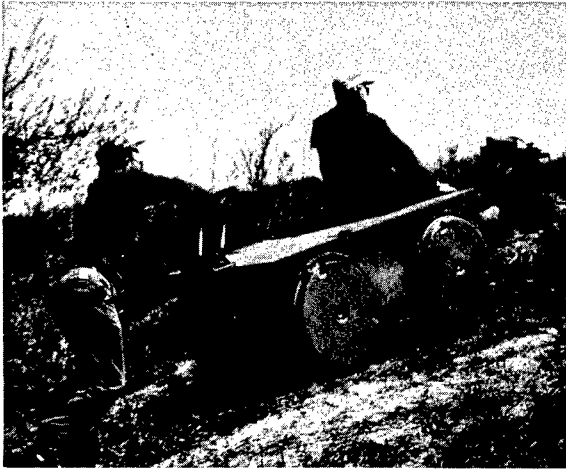
With the rebirth of special warfare in the last few years, the role of the individual soldier and of squad sized units has been re-emphasized. Most guerilla type fighting has been, is presently, and will most likely continue to occur in remote areas of the world. The terrain encountered may be tropical grasslands and canopy areas, or rugged mountains, inland waterways, swamps, mud flats and rice paddies. Other adverse terrain conditions are frequently encountered and must be crossed to accomplish the mission of the unit.

Logistical problems in remote areas multiply over those encountered in more favorable terrain. The individual soldier and the squad may have to be self-sustaining for days without resupply in remote areas. Food, ammunition, weapons, and other supplies must be taken along. As in the past, each individual soldier must carry his share of the load. With present and future high rate of fire weapons, the quantity of ammunition required has increased considerably over requirements of few years ago. With this extra burden, the mobility and range of the individual is considerably decreased. To gain superiority over the enemy in warfare in remote areas, the individual must be able to move faster than the opponent, be better equipped, and have a firepower advantage.

In order to obtain superiority over the enemy, the individual soldier must be relieved as a burden carrier. A machine must be developed to do the work for the soldier. Such a vehicle should be mobile, floatable and easy to operate by the individual. It must be an aid to the individual, not a burden. In addition to general characteristics of low cost, effectiveness, durability, reliability and lightweight the vehicle should specifically have:

- a. High payload/vehicle weight ratio.
- b. Minimum signature (sound, odor, sight).
- c. Floating capability with payload.
- d. Compact dimensions.
- e. Controls requiring minimum physical effort from operator.
- f. Maximum mobility to traverse narrow jungle trails, rain forest, savannah, swamps, marshland, and rough rocky mountain slopes of 60% grade.

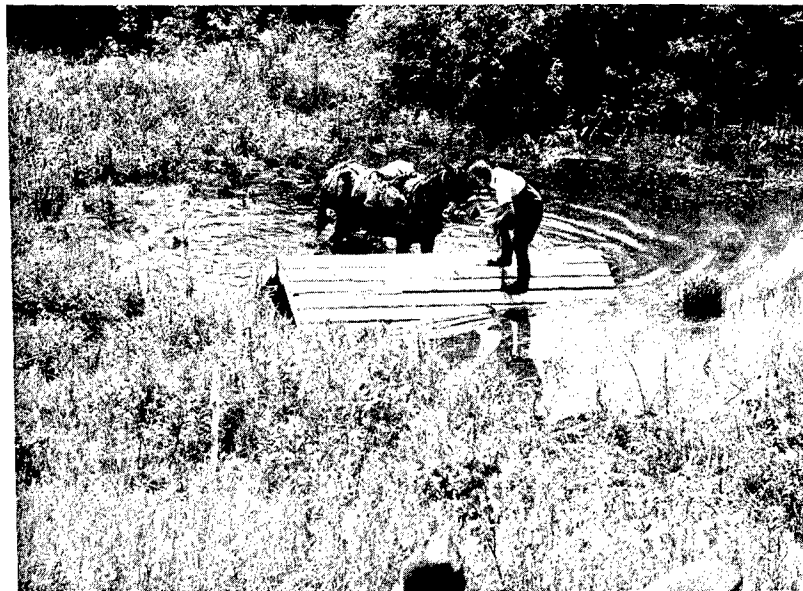
DESCRIPTION OF TEST COURSE



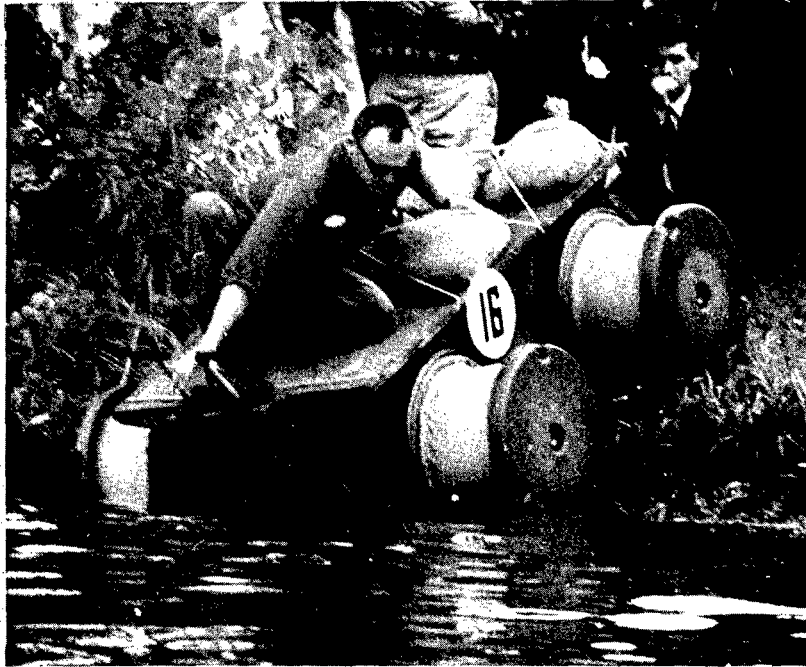
Area A - This area consisted of four main obstacles: a 50% uphill grade approximately 10 feet long; a dry bare earth ditch of 4 foot depth; a grass covered ditch of 4 foot depth; and a washed out trail which was severely rutted. The ruts contained some water, but provided a relatively firm footing underneath.



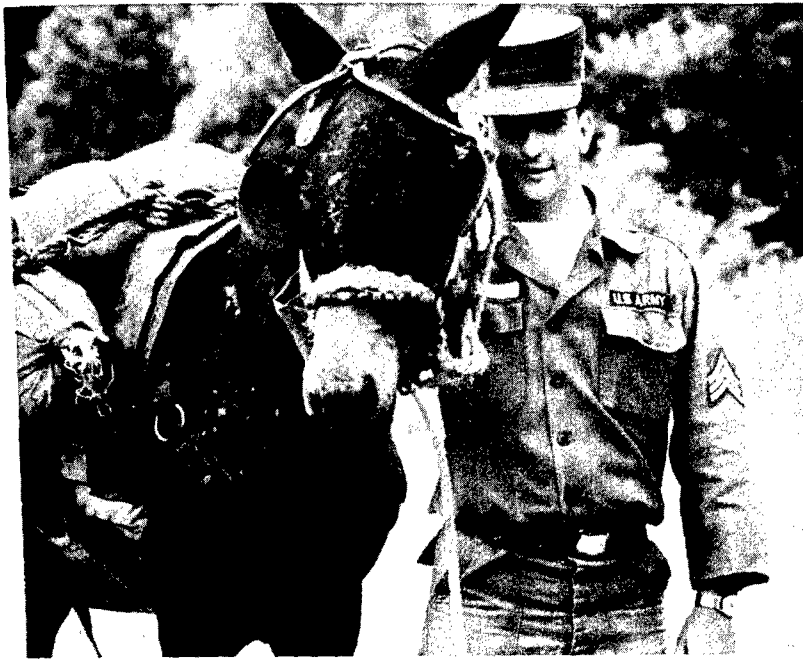
Area B - This course was laid out over a marshy area such that the footing became progressively wetter from entrance to exit. At the start of the demonstration, the entire area was heavily covered with vegetation and sufficiently wide that each driver could select his own route.



Area C - This area was an attempt to simulate a South East Asian design rice paddy and dike. The area was very wet with approximately 8 inches of water over very soft mud. In the middle of this was a wooden structure constructed to simulate a rice paddy dike. This was 24" high with a 60% approach and departure and 12" flat on top. The material was unpainted douglas fir.



Galloway Lake - The approach to the water is over a grassy area with a steep drop from 12" above to 12" below the water level. The mud bottom then dropped away gradually to floating depth.



MULE (LIVE ANIMAL)

MANUFACTURER:

WEIGHTS

Curb Weight 650 lbs.
 Rated Payload 400 lbs.

DIMENSIONS (Est.)

Length 84 in.
 Width 24 in.
 Height 72 in.
 Ground Clearance 30 in.

TREAD

ANGLE OF APPROACH

ANGLE OF DEPARTURE

FUEL CAPACITY

BRAKES

ENGINE

TRANSMISSION

AXLES

SUSPENSION

TIRES

MAXIMUM SPEED 10 mph

MINIMUM SPEED 0

RETAIL PRICE \$200.00

PERFORMANCE

Due to late arrival, the mule did not participate in area A. He successfully completed areas B and C with 150 lb. payload. This mule was operated at a reduced payload because of his age (30 years) and physical condition. The mule was demonstrated, without payload, swimming in the lake at approximately 3 miles per hour. The mule completed all of the courses without operator's assistance.



MAN-POWERED CARRIER

MANUFACTURER: U. S. Forest Service, Missoula, Montana

WEIGHTS

Curb Weight 35 lbs.
 Rated Payload 150 lbs.

DIMENSIONS

Length 82 in.
 Width 21.75 in.
 Height 23 in.
 Ground Clearance 7 in.

TREAD

N/A

ANGLE OF APPROACH

Variable

ANGLE OF DEPARTURE

90°

FUEL CAPACITY

None

BRAKES

Hand Type on Hub

ENGINE

Man-powered

TRANSMISSION

None

AXLES

Solid

SUSPENSION

None

TIRES

4.80/4.00x8

MAXIMUM SPEED

Walking speed

MINIMUM SPEED

Walking speed

RETAIL PRICE

\$125.00

PERFORMANCE

Vehicle successfully completed area A with a 100 lb. payload and considerable operator effort. Vehicle did not participate in any of the other areas.



BURRITO SCOOTER

MANUFACTURER: Pak Jak Sales and Service, Paradise, California

<u>WEIGHTS</u>		<u>FUEL CAPACITY</u>	3 qt.
Curb Weight	103 lbs.	<u>BRAKES</u>	On jack shaft, self energizing
Rated Payload	100 lbs. + driver	<u>ENGINE</u>	3 HP, 1 cyl., 4 cycle, air-cooled
<u>DIMENSIONS</u>		<u>TRANSMISSION</u>	Salsbury torque converter
Length	53 in.	<u>AXLES</u>	Solid
Width	21 in.	<u>SUSPENSION</u>	Rigid
Height	33 in.	<u>TIRES</u>	4.80x8
Ground Clearance	8.5 in.	<u>MAXIMUM SPEED</u>	40 mph
<u>TREAD</u>	N/A	<u>MINIMUM SPEED</u>	2 mph
<u>ANGLE OF APPROACH</u>	90°	<u>RETAIL PRICE</u>	\$260.00
<u>ANGLE OF DEPARTURE</u>	60°		

PERFORMANCE

Vehicle successfully completed areas A and B with rated payload. Some assistance was required by the operator. Vehicle did not participate in the other areas.



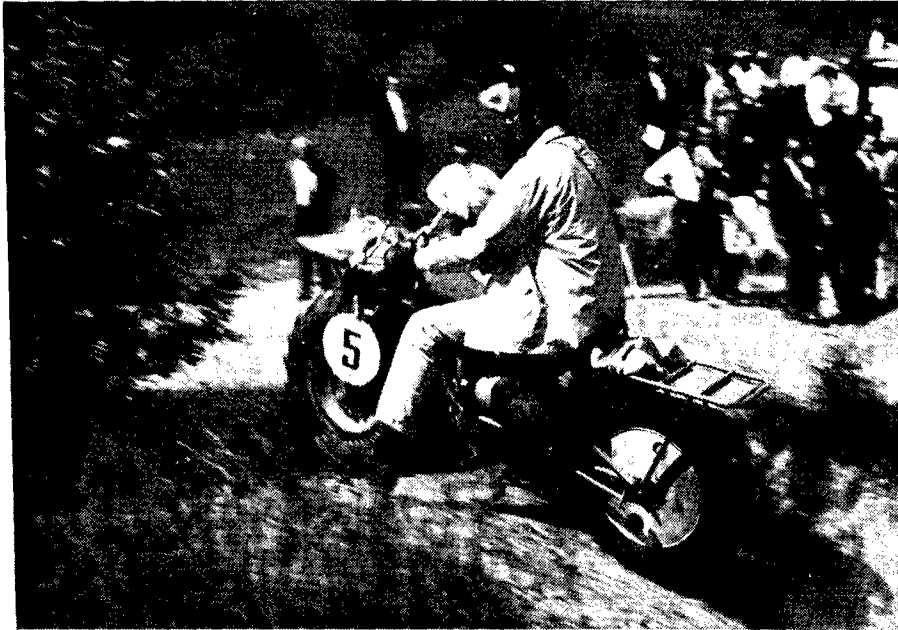
TOTE GOTE SCOOTER MODEL 414

MANUFACTURER: Bonham Corporation, Provo, Utah

<u>WEIGHTS</u>		<u>BRAKES</u>	Friction Type
Curb Weight	125 lbs.		Front and Rear
Rated Payload	100 lbs. + driver	<u>ENGINE</u>	Briggs & Stratton
			4 cycle, 1 cyl.,
			air cooled, 6 HP.
<u>DIMENSIONS</u>		<u>TRANSMISSION</u>	Automatic, Variable
Length	59 in.		speed
Width	13 in.	<u>AXLES</u>	Solid
Height	27 in.	<u>SUSPENSION</u>	Front - telescopic
Ground Clearance	8 in.		Rear - none
<u>TREAD</u>	N/A	<u>TIRES</u>	4.00x8
<u>ANGLE OF APPROACH</u>	90°	<u>MAXIMUM SPEED</u>	18 mph
<u>ANGLE OF DEPARTURE</u>	60°	<u>MINIMUM SPEED</u>	1 mph
<u>FUEL CAPACITY</u>	3 qt.	<u>RETAIL PRICE</u>	\$353.00

PERFORMANCE

Vehicle was audible at approximately 150 feet. Vehicle successfully completed areas A and B with rated payload. Some assistance was required by the operator. Vehicle did not participate in the other areas.



NETHERCUTT TRAILBREAKER

MANUFACTURER: Nethercutt Industrial Corporation, Sylmar, California

<u>WEIGHTS</u>		<u>BRAKES</u>	80mm Front brake
Curb Weight	190 lbs.		Stops both wheels
Rated Payload	150 lbs.	<u>ENGINE</u>	West Bend, 2 cycle,
	+ driver		8.2 cu. in., 1 cyl.
<u>DIMENSIONS</u>		<u>TRANSMISSION</u>	Albion 3-speeds
Length	77 in.		ft & rear wheel dr
Width	28 in.	<u>AXLES</u>	Solid
Height	41 in.	<u>SUSPENSION</u>	None
Ground Clearance	15 in.	<u>TIRES</u>	6.70x15 2-ply
<u>TREAD</u>	7 in.		implement
<u>ANGLE OF APPROACH</u>	90°	<u>MAXIMUM SPEED</u>	25 mph
<u>ANGLE OF DEPARTURE</u>	90°	<u>MINIMUM SPEED</u>	0.5 mph
<u>FUEL CAPACITY</u>	11 gal.	<u>RETAIL PRICE</u>	\$695.00

PERFORMANCE

Vehicle successfully completed areas A, B and C with rated payload. Some assistance was required by the operator particularly in area C where the vehicle was manhandled by the operator. Vehicle did not participate in the other areas.



NETHERCUTT TRAILBREAKER

MANUFACTURER: Nethercutt Industrial Corporation, Sylmar, California

<u>WEIGHTS</u>		<u>BRAKES</u>	80mm brake
Curb Weight	190 lbs.	Stops both wheels	
Rated Payload	150 lbs.	<u>ENGINE</u>	West Bend, 2 cycle,
	+ driver		8.2 cu. in., 1 cyl.
<u>DIMENSIONS</u>		<u>TRANSMISSION</u>	Albion 3-speeds
Length	77 in.		ft & rear wheel dr
Width	28 in.	<u>AXLES</u>	Motorcycle type
Height	41 in.	<u>SUSPENSION</u>	Rigid
Ground Clearance	15 in.	<u>TIRES</u>	6.70x 15 2-ply
<u>TREAD</u>	N/A		Implement
<u>ANGLE OF APPROACH</u>	90°	<u>MAXIMUM SPEED</u>	25 mph
<u>ANGLE OF DEPARTURE</u>	90°	<u>MINIMUM SPEED</u>	0.5 mph
<u>FUEL CAPACITY</u>	11 gal.	<u>RETAIL PRICE</u>	\$695.00

PERFORMANCE

Vehicle successfully completed areas A, B and C with no payload. Some assistance was required by the operator particularly in area C where the vehicle was manhandled by the operator. Vehicle was demonstrated floating in the lake, however, the engine stalled during this operation. Vehicle did not participate in sound level demonstration.



PAK JAK SCOOTER (STANDARD)

MANUFACTURER: Pak Jak Sales & Service, Paradise, California

<u>WEIGHTS</u>		<u>BRAKES</u>	One on first jack shaft
Curb Weight	170 lbs.		Self energizing
Rated Payload	200 lbs. + driver	<u>ENGINE</u>	3 HP, 1 cyl., 4 cycle, air cooled
<u>DIMENSIONS</u>		<u>TRANSMISSION</u>	Salsbury Torque converter
Length	75 in.	<u>AXLES</u>	Solid
Width	21 in.	<u>SUSPENSION</u>	Rigid
Height	33 in.	<u>TIRES</u>	4.80F, 6.70x15 R
Ground Clearance	9 in.	<u>MAXIMUM SPEED</u>	18 mph
<u>TREAD</u>	N/A	<u>MINIMUM SPEED</u>	2 mph
<u>ANGLE OF APPROACH</u>	90°	<u>RETAIL PRICE</u>	\$448.00
<u>ANGLE OF DEPARTURE</u>	60°		
<u>FUEL CAPACITY</u>	3 qt.		

PERFORMANCE

Vehicle successfully completed areas A and B with minor assistance by the operator. Rated payload was carried. Vehicle did not participate in other areas.



PAK JAK SCOOTER (MODIFIED)

MANUFACTURER: Pak Jak Sales & Service, Paradise, California

WEIGHTS

Curb Weight 190 lbs.
 Rated Payload 200 lbs.
 + driver

DIMENSIONS

Length 75 in.
 Width 29 in.
 Height 40 in.
 Ground Clearance 7.5 in.

TREAD

N/A

ANGLE OF APPROACH

90°

ANGLE OF DEPARTURE

90°

FUEL CAPACITY

3 qt.

BRAKES

Self energizing on
 jack shaft

ENGINE

3 HP, 1 cyl.,
 4 cycle, air cooled
 Salsbury,

TRANSMISSION

torque converter

AXLES

Solid

SUSPENSION

Rigid

TIRES

13x21

MAXIMUM SPEED

14 mph

MINIMUM SPEED

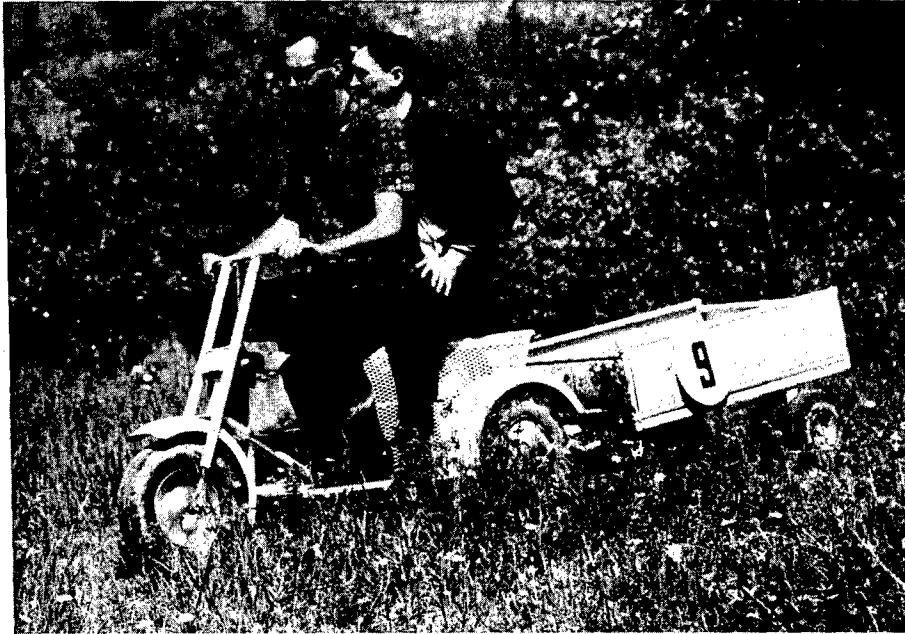
2 mph

RETAIL PRICE

Not available

PERFORMANCE

Vehicle successfully completed areas A, B and C; however, in area C considerable assistance was required from the operator. Rated payload was carried. Vehicle did not participate in sound level or lake demonstrations.



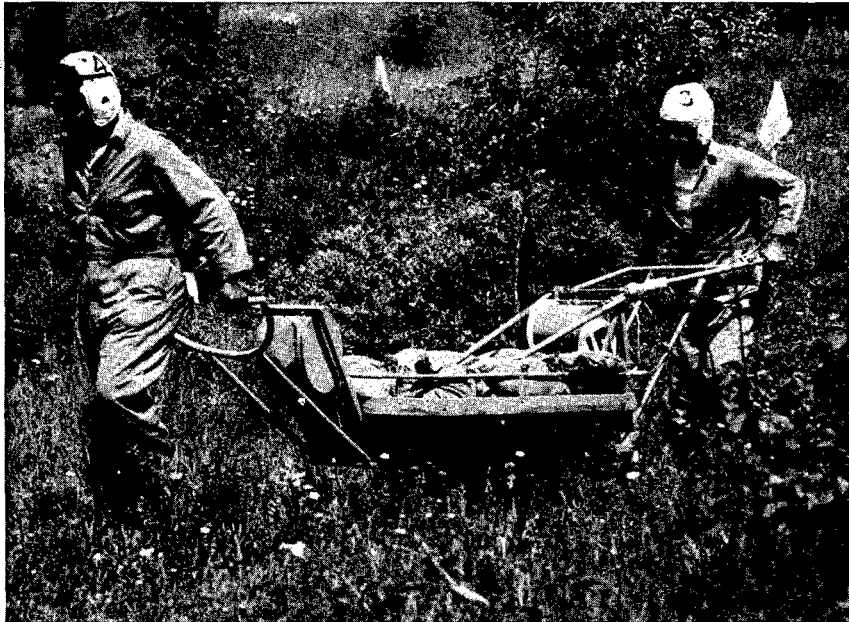
TOTE GOTE LOADSTAR VI SCOOTER W/TRAILER

MANUFACTURER: Bonham Corporation, Provo, Utah

<u>WEIGHTS</u>		<u>ENGINE</u>	Briggs & Stratton
Curb Weight (inc tlr)	310 lbs.		6 HP, 4 cycle, 1 cyl.
Rated Payload	400 lbs.		Air cooled
<u>DIMENSIONS</u>		<u>TRANSMISSION</u>	Automatic
Length	61 in.		Variable Speed
Width	30.5 in.	<u>AXLES</u>	Solid
Height	36.5 in.	<u>SUSPENSION</u>	Front - telescoping
Ground Clearance	8 in.	<u>TIRES</u>	5.70/5.00x8
<u>TREAD</u>	N/A	<u>MAXIMUM SPEED</u>	20 mph
<u>ANGLE OF APPROACH</u>	90°	<u>MINIMUM SPEED</u>	1 mph
<u>ANGLE OF DEPARTURE</u>	60°	<u>RETAIL PRICE</u>	
<u>FUEL CAPACITY</u>	1 gal.	(TOTAL)	\$647.00
<u>BRAKES</u>	Rear-Friction		

PERFORMANCE

Vehicle successfully completed the rise and the first ditch, however, vehicle was not capable of climbing out of the grassy ditch and had considerable difficulty in negotiating the washed out trail. In area B it completed the first half of the marsh but by-passed the wetter area. Vehicle carried rated payload plus 2 men. Vehicle did not participate in other areas.



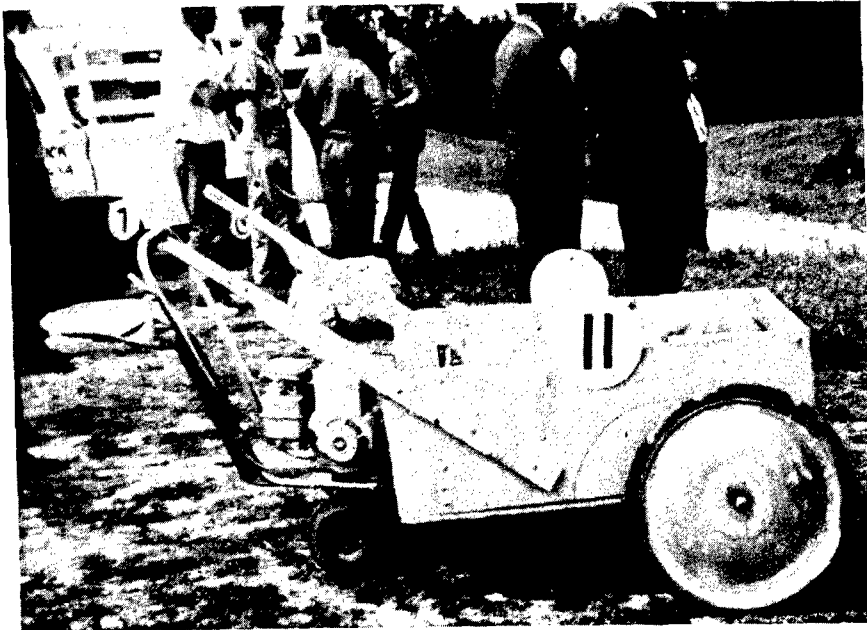
POWERED EQUIPMENT CARRIER, 2 X 2

MANUFACTURER: U. S. Forest Service, Missoula, Montana

<u>WEIGHTS</u>		<u>BRAKES</u>	Internal expanding on jack shaft
Curb Weight	240 lbs.	<u>ENGINE</u>	Briggs & Stratton, 3 HP, 4-cycle, 1 cylinder
Rated Payload	350 lbs.	<u>TRANSMISSION</u>	Borg Warner T-92, 3 speed
<u>DIMENSIONS</u>		<u>AXLES</u>	Solid
Length	115 in.	<u>SUSPENSION</u>	Rigid
Width	30.5 in.	<u>TIRES</u>	6.90/6.00 x 6
Height	42 in.	<u>MAXIMUM SPEED</u>	4.2 mph
Ground Clearance	9 in.	<u>MINIMUM SPEED</u>	0.5 mph
<u>TREAD</u>	N/A	<u>RETAIL PRICE</u>	\$550.00
<u>ANGLE OF APPROACH</u>	31°		
<u>ANGLE OF DEPARTURE</u>	22°		
<u>FUEL CAPACITY</u>	6 gal.		

PERFORMANCE

Vehicle completed the first rise successfully, however, considerable difficulty was experienced with the engine and the throttle could not be controlled properly. Two additional men were required to complete area A. Rated payload was carried. Vehicle did not participate in any other area.



DIEHL-MO-PAC

MANUFACTURER: H. L. Diehl Company, South Willington, Connecticut

<u>WEIGHTS</u>		<u>BRAKES</u>	None
Curb Weight		<u>ENGINE</u>	4 HP Briggs & Stratton
Rated Payload	1000 lbs.	<u>TRANSMISSION</u>	Belt clutch and gear transmission
<u>DIMENSIONS</u>		<u>AXLES</u>	
Length	78 in.	<u>SUSPENSION</u>	None
Width	30 in.	<u>TIRES</u>	Cart 26x2
Height	40 in.		Power Pack 10x3
Ground Clearance	15 in.	<u>MAXIMUM SPEED</u>	4.5 mph
<u>TREAD</u>	28 in.	<u>MINIMUM SPEED</u>	0.5 mph
<u>ANGLE OF APPROACH</u>	90°	<u>RETAIL PRICE</u>	Not available
<u>ANGLE OF DEPARTURE</u>			
<u>FUEL CAPACITY</u>	3 qts.		

PERFORMANCE

Vehicle required the assistance of the driver and 2 other men to negotiate the first rise in area A. The unit was withdrawn at this point. Vehicle carried 500 lbs. payload.



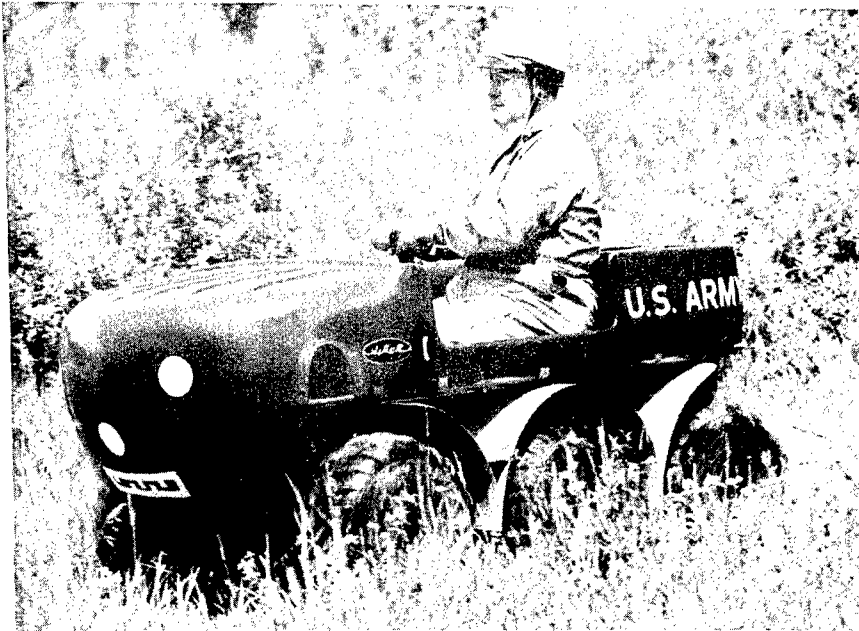
BUTTERFLY 3-WHEELED SCOOTER

MANUFACTURER: Pak Jak Sales & Service, Paradise, California

<u>WEIGHTS</u>		<u>BRAKES</u>	2 Brakes on jack shafts
Curb Weight	322 lbs.		Self energizing
Rated Payload	400 lbs. + driver	<u>ENGINE</u>	Tecumseh, 6 HP, 1 cyl., 4 cycle
<u>DIMENSIONS</u>		<u>TRANSMISSION</u>	Salsbury torque converter
Length	84 in.	<u>AXLES</u>	Solid
Width	53 in.	<u>SUSPENSION</u>	Rigid
Height	36 in.	<u>TIRES</u>	13x21 plastic
Ground Clearance	7.5 in.	<u>MAXIMUM SPEED</u>	16 mph
<u>TREAD</u>	40 in.	<u>MINIMUM SPEED</u>	0.5 mph
<u>ANGLE OF APPROACH</u>	90°	<u>RETAIL PRICE</u>	\$975.00
<u>ANGLE OF DEPARTURE</u>	60°		
<u>FUEL CAPACITY</u>	1 gal.		

PERFORMANCE

Vehicle successfully completed areas A and B. In area C the engine stalled when the vehicle tipped up to negotiate the dike due to the engine intake being submerged. Vehicle carried rated payload. Vehicle did not participate in sound level or lake demonstrations.



TRANSPORTER, 2 MAN, CANADIAN JIGER

MANUFACTURER: Jiger Corporation, Ltd., Rexdale, Ontario

WEIGHTS

Curb Weight 295 lbs.
 Rated Payload 300 lbs.

DIMENSIONS

Length 75.5 in.
 Width 50 in.
 Height 39 in.
 Ground Clearance 8 in.

TREAD

40 in.

ANGLE OF APPROACH

51°

ANGLE OF DEPARTURE

48°

FUEL CAPACITY

7.5 gal.

BRAKES

Disk-type, self-energized for steering, lever and cam for stopping

ENGINES

Two single-cylinder 2-stroke, air cooled 5.7 HP each, 5.9 cu.in.

TRANSMISSION

Belt, 3-reduction, variable speed pulleys Six tubular, all driven

AXLES

SUSPENSION

Rigid

TIRES

Low Pressure Tubeless

MAXIMUM SPEED

15 mph

MINIMUM SPEED

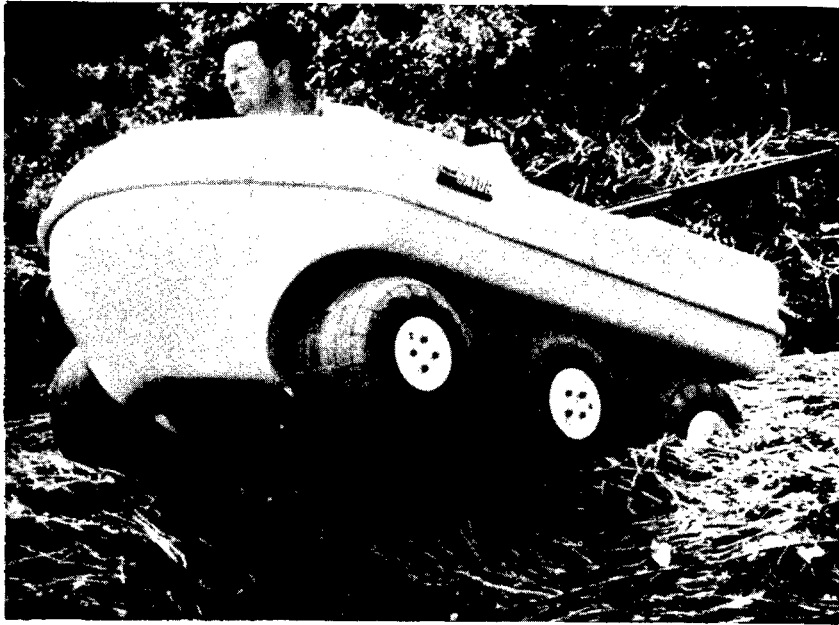
2.5 mph

RETAIL PRICE

\$895.00

PERFORMANCE

Vehicle was audible at approximately 150 feet in the sound level demonstration. It successfully completed areas A, B and C, however, on the bare ditch, the rutted trail in Area A, and on the dike in area C, the operator was required to dismount and assist the vehicle. Vehicle was successfully operated in the lake. Vehicle carried operator and payload totalling 300 lbs.



TERRA GATOR

MANUFACTURER: Andy Stewart, Inc., South El Monte, California

WEIGHTS

Curb Weight 565 lbs.
 Rated Payload 1000 lbs.

DIMENSIONS

Length 72 in.
 Width 48 in.
 Height 33 in.
 Ground Clearance 8.5 in.

TREAD 36 or 39 in.

ANGLE OF APPROACH

ANGLE OF DEPARTURE

FUEL CAPACITY 3 gal.

BRAKES

2 Band Type

ENGINE

10 HP Kohler, air cooled

1 cyl., 4 cycle

TRANSMISSION

2 Speed Forward

1 Speed Reverse

AXLES

3 Solid

SUSPENSION

Solid

TIRES

16x12 or 16x15

MAXIMUM SPEED

18 mph

MINIMUM SPEED

1/8 mph

RETAIL PRICE

\$1395.00

PERFORMANCE

Production of this vehicle was not completed in time to participate in the demonstration.



AS - 24

MANUFACTURER: Fabrique National D'Armes De Guerre, Herstal Lez Liege, Belgium

WEIGHTS

Curb Weight 350 lbs.
 Rated Payload 700 lbs.

DIMENSIONS

Length 72 in.
 Width 64 in.
 Height 34.5 in.
 Ground Clearance 6.25 in.

TREAD (Rear)

51 in.

ANGLE OF APPROACH

90°

ANGLE OF DEPARTURE

90°

FUEL CAPACITY

2.25 gal.

BRAKES

Mechanically operated acting on rear wheels

ENGINE

2 cylinder - 2 cycle air cooled, 15 cu in. 15 HP @ 5400 RPM

TRANSMISSION

Type: FN 24 4 speed forward

AXLES

Automotive type with differential, rear

SUSPENSION

None

TIRES

Lypsoid 22 x 12

MAXIMUM SPEED

31 mph

MINIMUM SPEED

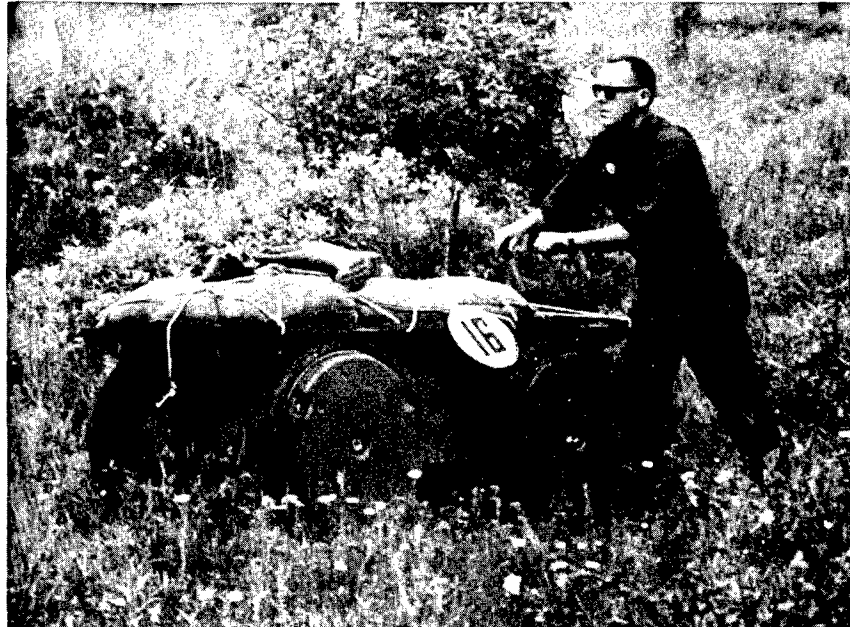
1 mph

RETAIL PRICE

\$1200.00

PERFORMANCE

The vehicle successfully completed the rise and ditches in area A, however, it was immobilized in the ruts of the trail due to lack of ground clearance. In area B it successfully completed the first half of the course, however, it became immobilized in the wetter portion of the marsh. Vehicle carried rated payload. The AS-24 did not participate in the other areas.



AMPHIBIOUS SUPPLY PLATFORM (ASP)

MANUFACTURER: Jered Industries, Birmingham, Michigan

WEIGHTS

Curb Weight 475 lbs.
 Rated Payload 500 lbs.

DIMENSIONS

Length 71 in.
 Width 39 in.
 Height (Deck) 27.5 in.
 (Controls) 38.5 in.
 Ground Clearance 10.5 in.

TREAD

34 in.

ANGLE OF APPROACH

90°

ANGLE OF DEPARTURE

80°

FUEL CAPACITY

5 gal.

BRAKES

4 Wheel Hydrostatic

ENGINE

Kohler KT-161
 air cooled, 7 HP

TRANSMISSION

Salsbury - Mechanical
 torque converter

AXLES

None - Hydrostatic
 Drive to wheels

SUSPENSION

None

TIRES

1.75 x 26

MAXIMUM SPEED

6 mph (land)
 2 mph (water)

MINIMUM SPEED

0 mph (land)
 0 mph (water)

RETAIL PRICE

Not available

PERFORMANCE

The ASP was audible at approximately 135 feet. It successfully completed area A with the exception of the washed out trail which it by-passed. In area B it experienced no difficulty. In area C it had insufficient traction to climb the dike and was forced to withdraw. In the lake area it experienced no difficulty. Vehicle carried rated payload.



TURTLE

MANUFACTURER: Studebaker Corporation, South Bend, Indiana

<u>WEIGHTS</u>		<u>BRAKES</u>	Hydraulic
Curb Weight	355.9 lbs.		Displacement
Rated Payload	500-750 lbs.	<u>ENGINE</u>	Kohler-8 HP-4 cycle
<u>DIMENSIONS</u>			1 cylinder, air cooled
Length	72 in.	<u>TRANSMISSION</u>	Hydrostatic
Width	36 in.	<u>AXLES</u>	(1) Vertical Movement
Height	39 in.		with 22° turn angle
Ground Clearance	11 in.	<u>SUSPENSION</u>	Ft-Rigid Rear-articulated
<u>TREAD</u>	24 in.	<u>TIRES</u>	27x10-12 and 9.50x8
<u>ANGLE OF APPROACH</u>	60°	<u>MAXIMUM SPEED</u>	6 mph
<u>ANGLE OF DEPARTURE</u>	50°	<u>MINIMUM SPEED</u>	0.5 mph
<u>FUEL CAPACITY</u>	3.6 gal.	<u>RETAIL PRICE</u>	\$995.00

PERFORMANCE

The vehicle did not participate in the sound level demonstration. It successfully completed area A with the exception of the washed out trail, which was blocked. In area B it experienced no difficulty. In area C it had insufficient traction to climb the wooden dike and withdrew. In the lake area it experienced no difficulty. The vehicle was demonstrated without payload in areas A and C. Loads equivalent to 350 pounds were transported in area B and the lake.



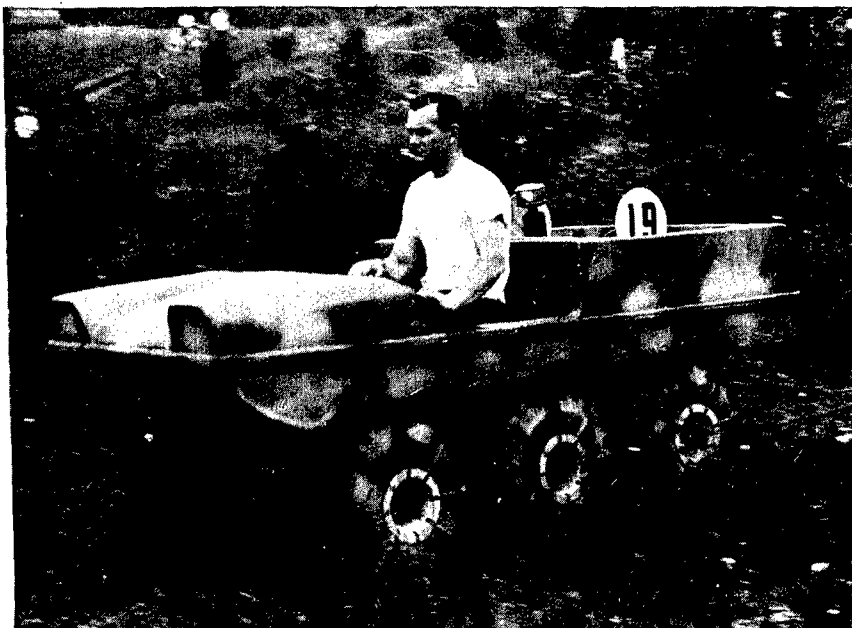
CENTIPEDE

MANUFACTURER: Designed by Ted Duke, Billings, Montana
FURNISHED BY: Jered Industries, Birmingham, Michigan

<u>WEIGHTS</u>		<u>BRAKES</u>	Friction segment - in Vee pulleys
Curb Weight	680 lbs.	<u>ENGINE</u>	Briggs & Stratton air-cooled, 1 cyl., 4-cycle, 6 HP
Rated Payload	400 lbs. + driver	<u>TRANSMISSION</u>	Warner T-92, 3-speed fwd., 1-speed reverse
<u>DIMENSIONS</u>		<u>AXLES</u>	Chain drive each wheel
Length	68 in.	<u>SUSPENSION</u>	Arm and compression spring
Width	30 in.	<u>TIRES</u>	3.50 x 10
Height-Adjustable	19-29 in.	<u>MAXIMUM SPEED</u>	12 mph
Ground clearance- Adj	2-12 in.	<u>MINIMUM SPEED</u>	1 mph
<u>TREAD</u>	28 in.	<u>RETAIL PRICE</u>	Not available
<u>ANGLE OF APPROACH</u>	90°		
<u>ANGLE OF DEPARTURE</u>	90°		
<u>FUEL CAPACITY</u>	6 gal.		

PERFORMANCE

This vehicle participated only in the first portion of area A which it successfully completed. Carried rated payload. This vehicle was particularly noteworthy because of the driver controls which are remotely located approximately six feet on "umbilical cord". This allowed the operator to maintain complete control even when the vehicle was pitching violently.



HUSKY DUCK (AMPHIBIOUS, 6X6)

MANUFACTURER: Neuman & Bennetts, Inc., Berkeley, California

WEIGHTS

Curb Weight 700 lbs.
 Rated Payload 450 lbs.
 + driver

DIMENSIONS

Length 96 in.
 Width 48 in.
 Height 30 in.
 Ground Clearance 8 in.

TREAD

12 in.

ANGLE OF APPROACH

30°

ANGLE OF DEPARTURE

30°

FUEL CAPACITY

7 gal.

BRAKES

ENGINE

TRANSMISSION

AXLES

SUSPENSION

TIRES

MAXIMUM SPEED

MINIMUM SPEED

RETAIL PRICE

2-V Belt
 9 HP Air-cooled
 1 cylinder, 4 cycle
 Torque Converters
 Six Solid
 None
 22 x 12 Plastic
 11 mph
 2 mph
 \$1500.00

PERFORMANCE

The vehicle did not participate in the sound level demonstration. It completed all other obstacles, however, in both the bare and grassy ditches of area A and on the dike in area C 2 additional men were required to push the vehicle over the obstacles. For this demonstration a payload of 150 lbs. was carried.



ESTATE TRACTOR

MANUFACTURER: FMC Corporation, Bolens Division, Port Washington, Wisconsin

WEIGHTS

Curb Weight 530 lbs.
 Rated Payload 250 lbs. 1
 + driver

DIMENSIONS

Length 62 in.
 Width 34 in.
 Height 40 in.
 Ground Clearance 7 in.

TREAD

26 in.

ANGLE OF APPROACH

90°

ANGLE OF DEPARTURE

90°

FUEL CAPACITY

1.25 gal.

BRAKES

Rear wheels braked by clutch pedal operated brake on transmission power shaft

ENGINE

7.25 HP, 4-cycle, single cyl., Wisconsin air-cooled

TRANSMISSION

3-speeds fwd., 1 rev, 2-speed range input.

AXLES

Automotive type. Controlled differential action

SUSPENSION

Pivoting front

TIRES

6.50x8 front, 8x12 rear

MAXIMUM SPEED

6 mph

MINIMUM SPEED

3/4 mph

RETAIL PRICE

\$675.00

PERFORMANCE

This vehicle did not participate in the sound level demonstration. It successfully completed all of area A and the first half of area B. In the wetter portion of area B it became immobilized. Vehicle carried the rated payload distributed in various places on the axles and frame. It did not participate in any other areas.



TRAIL-MATE

MANUFACTURER: Trail Mate Corporation of Alaska, Anchorage, Alaska

WEIGHTS

Curb Weight 850 lbs.
 Rated Payload 800 lbs.
 + driver

DIMENSIONS

Length 94 in.
 Width 59 in.
 Height 45 in.
 Ground Clearance 4.5 in.

TREAD 15 in.

ANGLE OF APPROACH 52°

ANGLE OF DEPARTURE 74°

FUEL CAPACITY 4 gal.

BRAKES

ENGINE

Hydraulic Disc
 2 each 6 HP
 Briggs & Stratton
 4 cycle, 1 cylinder

TRANSMISSION

Belt-Variable
 Torque converter
 8 - Solid

AXLES

SUSPENSION

None
 16x15 Terra Tires

TIRES

MAXIMUM SPEED

MINIMUM SPEED

RETAIL PRICE

16 mph
 1 mph
 \$2630.00

PERFORMANCE

The vehicle did not participate in the sound level demonstration. It completed area A, however, the assistance of 2 additional men was required to negotiate exit from the bare and grassy ditches. It experienced no difficulty in area B, however, in area C it was unable to climb the dike and withdrew. It was operated in the lake with no difficulty. Rated payload was carried, plus 138 lbs. additional in area A and lake. It was operated with driver both mounted and dismounted.



TRUCK, UTILITY, 1/4 TON, 4X4, M151 (STANDARD)

MANUFACTURER: Ford Motor Company, Dearborn, Michigan

<u>WEIGHTS</u>		<u>BRAKES</u>	Hydraulic
Curb Weight	2325 lbs.	<u>ENGINE</u>	4 cylinder, 4 cycle
Rated Payload	800 lbs.		71 HP, 141.5 cu in.
<u>DIMENSIONS</u>		<u>TRANSMISSION</u>	4 speeds forward
Length	132 in.		1 reverse, manual
Width	62.25 in.	<u>AXLES</u>	2 - independent
Height	71 in.	<u>SUSPENSION</u>	Coil spring
Ground Clearance	8.8 in.		4 wheel independent
<u>TREAD</u>	53 in.	<u>TIRES</u>	7.00 x 16
<u>ANGLE OF APPROACH</u>	66°	<u>MAXIMUM SPEED</u>	65 mph
<u>ANGLE OF DEPARTURE</u>	37°	<u>MINIMUM SPEED</u>	2 mph
<u>FUEL CAPACITY</u>	17.7 gal.	<u>RETAIL PRICE</u>	\$2680.00

PERFORMANCE

Vehicle was audible at approximately 140 feet. It successfully completed area A and the first half of area B. It became immobilized in the wetter portion of area B. The vehicle did not participate in area C or in the lake. Vehicle carried rated payload.



TRUCK, UTILITY, 1/4 TON, 4x4, M151 (MODIFIED)

MANUFACTURER: Ford Motor Company, Dearborn, Michigan

<u>WEIGHTS</u>		<u>BRAKES</u>	Duo-serve single Hydraulic actuation
Curb Weight	2390 lbs.	<u>ENGINE</u>	4 cylinder, 4 cycle 71 HP, 141.5 cu in.
Rated Payload	800 lbs.	<u>TRANSMISSION</u>	4 speed forward 1 reverse, manual
<u>DIMENSIONS</u>		<u>AXLES</u>	2 - independent
Length	132 in.	<u>SUSPENSION</u>	4 wheel independent
Width	62.25 in.	<u>TIRES</u>	Agricultural 9.5/9.0-16
Height	72 in.	<u>MAXIMUM SPEED</u>	65 mph
Ground Clearance	9.8 in.	<u>MINIMUM SPEED</u>	2 mph
<u>TREAD</u>	53 in.	<u>RETAIL PRICE</u>	\$2660.00
<u>ANGLE OF APPROACH</u>	66°		
<u>ANGLE OF DEPARTURE</u>	37°		
<u>FUEL CAPACITY</u>	17.7 gal.		

PERFORMANCE

This vehicle successfully completed areas A and B but did not participate in any of the other areas. Vehicle carried rated payload.



CARRIER, LIGHT WEAPONS, INFANTRY,
1/2 TON, 4X4, M274 (MULE) (STANDARD)

MANUFACTURER: Kaiser Jeep Corporation, Toledo, Ohio

WEIGHTS

Curb Weight 925 lbs.
Rated Payload 1000 lbs.

DIMENSIONS

Length 118.25 in.
Width 49.75 in.
Height 49.12 in.
Ground Clearance 8.5 in.

TREAD

40.5 in.

ANGLE OF APPROACH

40°

ANGLE OF DEPARTURE

34°

FUEL CAPACITY

8 gal.

BRAKES

Internal expanding cable and cam w/ foot peddle actuation.

ENGINE

One, air-cooled 4 cyl., 4 stroke horizontally opposed 15 HP 53.5 cu. in.

TRANSMISSION

Integral w/rear axle 3 speeds forward, 1 reverse.

AXLES

2 spiral bevel

SUSPENSION

None

TIRES

7.50 x 10

MAXIMUM SPEED

25 mph

MINIMUM SPEED

2 mph

RETAIL PRICE

\$3880.00

PERFORMANCE

This vehicle was audible at approximately 140 feet. It successfully completed area A up to the washed out trail where it became immobilized in the ruts. In area B, it was immobilized in the wetter portion of the course after successfully completing the first half. Vehicle carried the rated payload. It did not participate in area C or the lake.



CARRIER, LIGHT WEAPONS, INFANTRY,
1/2 TON, 4X4, M274 (MULE) (MODIFIED)

MANUFACTURER: Kaiser Jeep Corporation, Toledo, Ohio

<u>WEIGHTS</u>		<u>BRAKES</u>	Internal expanding drum on drive shaft
Curb Weight	1145 lbs.		Air-cooled 4 cyl.,
Rated Payload	1000 lbs.	<u>ENGINE</u>	4 stroke, horizontally opposed 15 HP @ 3200 RPM 53.5 cu in.
<u>DIMENSIONS</u>			<u>TRANSMISSION</u>
Length	118.25 in.		3 speeds forward, 1 reverse, 2 speed transfer
Width	58.75 in.		<u>AXLES</u>
Height	49.12 in.		Spiral bevel
Ground Clearance	9.5 in.		None
<u>TREAD</u>	49.5 in.	<u>SUSPENSION</u>	Terra Tires 24X12 - 10R
<u>ANGLE OF APPROACH</u>	40°	<u>TIRES</u>	
<u>ANGLE OF DEPARTURE</u>	34°		<u>MAXIMUM SPEED</u>
<u>FUEL CAPACITY</u>	8 gal.		25 mph
			<u>MINIMUM SPEED</u>
			2 mph
			<u>RETAIL PRICE</u>
			\$4500.00

PERFORMANCE

This vehicle successfully completed area A, however, it by-passed the washed out trail due to interference from Vehicle No. 24. In area B, it completed the first half of the course but was immobilized in the wetter portion. Carried rated payload. Did not participate in other areas.



TRUCK, CARGO, 3/4 TON, 6x6, XM408 (MODIFIED)

MANUFACTURER: Ford Motor Company, Dearborn, Michigan

<u>WEIGHTS</u>		<u>BRAKES</u>	Hydraulic internal expanding
Curb Weight	2890 lbs.	<u>ENGINE</u>	4 cylinder, 71 HP, 141.5 cu in., 4 stroke
Rated Payload	1500 lbs.	<u>TRANSMISSION</u>	4 speed forward
<u>DIMENSIONS</u>		<u>AXLES</u>	Wheel drive shafts
Length	161.5 in.	<u>SUSPENSION</u>	Cardan type universal
Width	63 in.		Ft-independent coil
Height	76 in.		Rear-Articulated leaf spring bogie
Ground Clearance		<u>TIRES</u>	9.50-9.00x16
<u>TREAD</u>	53 in.	<u>MAXIMUM SPEED</u>	64 mph
<u>ANGLE OF APPROACH</u>	62°	<u>MINIMUM SPEED</u>	2 mph
<u>ANGLE OF DEPARTURE</u>	42°	<u>RETAIL PRICE</u>	\$4000.00
<u>FUEL CAPACITY</u>	17.7 gal.		

PERFORMANCE

Special tire modifications were not completed in time to participate in the demonstration.



POWER TRACK 10C*

MANUFACTURER: Arrow Manufacturing Company, Denver, Colorado

*Now manufactured by: Power-Track Corporation, Denver, Colorado

WEIGHTS

Curb Weight 430 lbs.
 Rated Payload 500 lbs.
 + driver

DIMENSIONS

Length 90 in.
 Width 38 in.
 Height 34.5 in.
 Ground Clearance 4 in.

TREAD

22 in.

ANGLE OF APPROACH

10°

ANGLE OF DEPARTURE

10°

FUEL CAPACITY

1 gal.

BRAKES

Bendix automatic

ENGINE

7 HP - OMC, 1 cylinder

TRANSMISSION

4 cycle, air-cooled

AXLES

Dura-matic

SUSPENSION

2

TIRES

Rigid
 4.10/3.50x 6 Rubber
 tracks

MAXIMUM SPEED

12 mph

MINIMUM SPEED

Not available

RETAIL PRICE

\$875.00

PERFORMANCE

This vehicle completed the first rise in area A but was unable to negotiate the first ditch due to track slippage. It did not participate in any other portion of the course. Vehicle was carrying a 150 lb. payload plus driver.



POWER TRACK 20C*

MANUFACTURER: Arrow Manufacturing Company, Denver, Colorado
 *Now manufactured by: Power-Track Corporation, Denver, Colorado

WEIGHTS

Curb Weight 490 lbs.
 Rated Payload 700 lbs.
 + driver

DIMENSIONS

Length 90 in.
 Width 38 in.
 Height 31.5 in.
 Ground Clearance 4 in.
TREAD 28 in.

ANGLE OF APPROACH 10°

ANGLE OF DEPARTURE 10°

FUEL CAPACITY 1.25 gal.

BRAKES

Bendix automotive

ENGINE

9 HP OMC

TRANSMISSION

Dura-matic

AXLES

2

SUSPENSION

Rigid

TIRES

Rubber Tracks

MAXIMUM SPEED

12 mph

MINIMUM SPEED

Not available

RETAIL PRICE

\$1275.00

PERFORMANCE

This vehicle required assistance to negotiate the first rise due to track slippage and withdrew from the course at this point. Vehicle carried 150 lbs plus driver.



CARRIER, CARGO, AMPHIBIOUS, ARTICULATED,
CL-70 (CANADIAN RAT)

MANUFACTURER: Canadair Ltd., Montreal, Quebec

<u>WEIGHTS</u>		<u>BRAKES</u>	No service brakes
Curb Weight	1500 lbs.		Parking brake ratchet
Rated Payload	1000 lbs.		Control disc caliper
<u>DIMENSIONS</u>		<u>ENGINE</u>	Volkswagon 4 cylinder
Length	157 in.		Air-cooled, horizontally
Width	48 in.		opposed 4 stroke 36 HP
Height	61 in.	<u>TRANSMISSION</u>	York Gears Ltd.
Ground Clearance	4.5 in.		4 speed fwd., 1 reverse
<u>TREAD</u>	23.5 in.	<u>AXLES</u>	Spiral bevel
<u>ANGLE OF APPROACH</u>	90°	<u>SUSPENSION</u>	Solid
<u>ANGLE OF DEPARTURE</u>	90°	<u>TIRES</u>	3.40/3.00x5 (std);
<u>FUEL CAPACITY</u>	18 gal.		4.00x6(opt); band track
		<u>MAXIMUM SPEED</u>	23 mph(land)-
			2 mph(water)
		<u>MINIMUM SPEED</u>	1.5 mph
		<u>RETAIL PRICE</u>	Not available

PERFORMANCE

This vehicle did not participate in the sound level demonstration. Vehicle successfully completed all test obstacles except the dike in area C. After climbing the dike vehicle broke the drive shaft between units and lost power to the trailer section. It required assistance over dyke but was able to continue out of remainder of the course by power provided by the front unit. Carried rated payload.



THIOKOL MODEL 1401

MANUFACTURER: Thiokol Chemical Corporation, Logan, Utah

WEIGHTS

Curb Weight 1435 lbs.
 Rated Payload 1000 lbs.
 + driver & passenger

DIMENSIONS

Length 107 in.
 Width 62 in.
 Height 48 in.
 Ground Clearance 5½ in.

TREAD (Est)

ANGLE OF APPROACH

ANGLE OF DEPARTURE

FUEL CAPACITY

42 in.
 58°
 79°
 8 gal.

BRAKES

ENGINE

TRANSMISSION

AXLES

SUSPENSION

TIRES

MAXIMUM SPEED

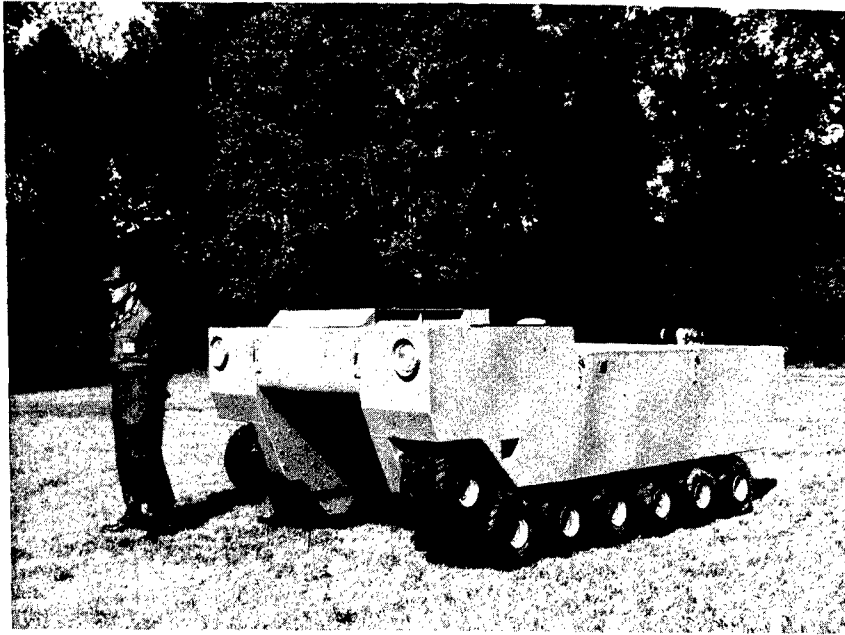
MINIMUM SPEED

RETAIL PRICE

Integral with planetary differential
 OMC Md1 #218, 18 HP
 3-speed belt torque converter and 4-speed fwd and 1 reverse gear box
 Planetary controlled differential 6.166:1 ratio.
 Half elliptic leaf spring
 4.80x8 Idler Tires
 15 mph
 0.6 mph
 \$3395

PERFORMANCE

This vehicle successfully completed areas A and B. However, in area C it was unable to climb the dike due to loss of traction. Carried rated payload. Vehicle did not participate in sound level or lake demonstrations.



VIPER
 (VEHICLE, INFANTRY, PONTOON EQUIPPED, RECONNAISSANCE)

MANUFACTURER: Jered Industries, Birmingham, Michigan

<u>WEIGHTS</u>		<u>BRAKES</u>	In transmission
Curb Weight	3000 lbs.	<u>ENGINE</u>	Chevrolet Corvaire 80 HP
Rated Payload	1000 lbs.		4 cycle, 6 cylinder
<u>DIMENSIONS</u>		<u>TRANSMISSION</u>	Warner T-92, 3-speed
Length	144 in.		fwd and 1 reverse
Width	84 in.	<u>AXLES</u>	Chain drive each wheel
Height	55 in.	<u>SUSPENSION</u>	None
Ground Clearance	22 in.	<u>TIRES</u>	16x15 Terra Tire
<u>TREAD</u>	69 in.	<u>MAXIMUM SPEED</u>	20 (land) - 6 (water) mph
<u>ANGLE OF APPROACH</u>	81°	<u>MINIMUM SPEED</u>	1 (land) mph
<u>ANGLE OF DEPARTURE</u>	60°	<u>RETAIL PRICE</u>	Not available
<u>FUEL CAPACITY</u>	40 gal.		

PERFORMANCE

This vehicle was not completed in time for the demonstration.



THIOKOL MODEL 1301

MANUFACTURER: Thiokol Chemical Corporation, Logan, Utah

WEIGHTS

Curb Weight 2980 lbs.
 Rated Payload 1000 lbs.
 + driver

DIMENSIONS

Length 15.7 in.
 Width 77.5 in.
 Height 63 in.
 Ground Clearance 12 in.
 TREAD 51.4 in.

TREAD

ANGLE OF APPROACH

ANGLE OF DEPARTURE

FUEL CAPACITY

45°
 34°
 18 gal.

BRAKES

ENGINE

TRANSMISSION

AXLES

SUSPENSION

TIRES

MAXIMUM SPEED

MINIMUM SPEED

RETAIL PRICE

Integral with planetary differential
 Ford 170 cu in., 101 HP
 6 cylinder, in line, liquid cooled, 4 cycle
 4-speed forward
 1 reverse
 Planetary controlled differential with 6.166:1 ratio
 Trailing arm with torsion springs
 4.50x12 Idler Tires
 35 mph
 3.7 mph
 \$7680

PERFORMANCE

This vehicle did not participate in sound level demonstration. It successfully completed areas A and B; however, it could not negotiate area C due to loss of traction. It successfully swam in the lake demonstration. Rated payload was carried.



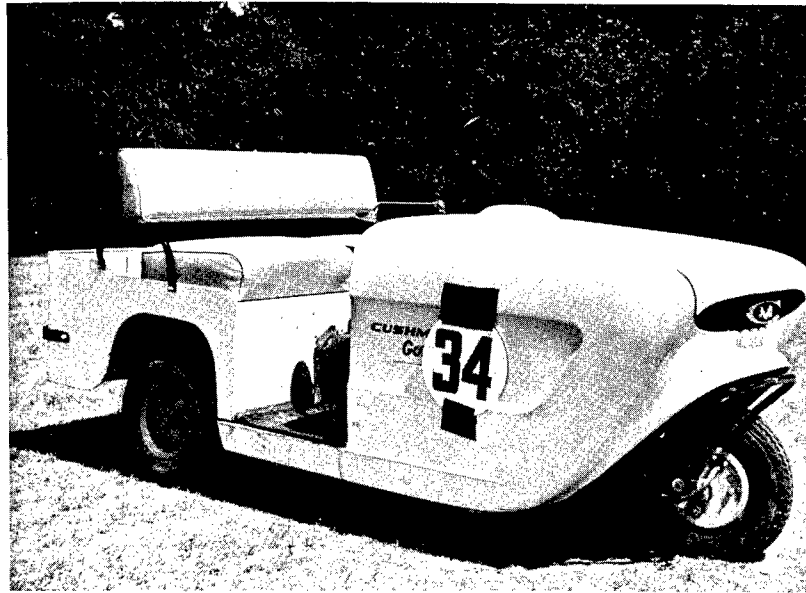
THIOKOL MODEL 1101

MANUFACTURER: Thiokol Chemical Corporation, Logan, Utah

<u>WEIGHTS</u>		<u>BRAKES</u>	Integral with planetary differential
Curb Weight	2850 lbs.		
Rated Payload	1000 lbs.	<u>ENGINE</u>	Ford 170 cu in., 101 HP
+ driver & passenger			6 cyl., water cooled
<u>DIMENSIONS</u>		<u>TRANSMISSION</u>	4 cycle, in line
Length	133.5 in.		4 speed fwd., 1 reverse
Width	77.4 in.	<u>AXLES</u>	Planetary controlled differential-6.166:1 ratio
Height	79.75 in.		
Ground Clearance	13 in.	<u>SUSPENSION</u>	Trailing arm w/torsion spring
<u>TREAD</u>	51.4 in.		
<u>ANGLE OF APPROACH</u>	47°	<u>TIRES</u>	4.50x12 Idler Tires
<u>ANGLE OF DEPARTURE</u>	32°	<u>MAXIMUM SPEED</u>	35 mph
<u>FUEL CAPACITY</u>	18 gal.	<u>MINIMUM SPEED</u>	3.7 mph
		<u>RETAIL PRICE</u>	\$6550

PERFORMANCE

This vehicle successfully completed areas A and B. However, in area C it was unable to climb the dike due to loss of traction. Carried rated payload. Vehicle did not participate in sound level or lake demonstrations.



GOLF. CART

MANUFACTURER: Outboard Marine Corporation, Waukegan, Illinois

<u>WEIGHTS</u>		<u>BRAKES</u>	Drive shaft
Curb Weight	825 lbs.	<u>ENGINE</u>	OMC 18 HP, 4 cycle, 2 cylinder
Rated Payload	500 lbs.	<u>TRANSMISSION</u>	Forward and reverse
<u>DIMENSIONS</u>		<u>AXLES</u>	Worm gear
Length	96.25 in.	<u>SUSPENSION</u>	Spring and rubber
Width	45.6 in.	<u>TIRES</u>	8.00x6, 9.50x8 or Terra 12 in.
Height	46.25 in.	<u>MAXIMUM SPEED</u>	12 mph
Ground Clearance	5 in.	<u>MINIMUM SPEED</u>	2 mph
<u>TREAD</u>	37 in.	<u>RETAIL PRICE</u>	Not available
<u>ANGLE OF APPROACH</u>	90°		
<u>ANGLE OF DEPARTURE</u>	40°		
<u>FUEL CAPACITY</u>	4.5 gal.		

PERFORMANCE

This vehicle was presented only for sound level evaluation and was audible at approximately 100 feet.



BOAT

MANUFACTURER: Aluma-Craft, Minneapolis, Minnesota

SUPPLIED BY: Outboard Marine Corporation, Waukegan, Illinois

WEIGHTS

Curb Weight 167 lbs.
 Rated Payload 1000 lbs.

DIMENSIONS

Length 14 ft.
 Width 56 in.
 Height 26 in.
 Wheel Base

TREAD

ANGLE OF APPROACH

ANGLE OF DEPARTURE

FUEL CAPACITY

BRAKES

ENGINE

Outboard, Marine, 18 HP

TRANSMISSION

AXLES

SUSPENSION

TIRES

MAXIMUM SPEED

MINIMUM SPEED

RETAIL PRICE

Not available

PERFORMANCE

This vehicle was presented only for sound level demonstration. The noise of the engine was less than the noise of the waves slapping the boat therefore audibility distance could not be measured.



THIOKOL MYTE

MANUFACTURER: Thiokol Chemical Corporation, Logan, Utah

WEIGHTS

Curb Weight 607 lbs.
 Rated Payload 400 lbs.
 + driver

DIMENSIONS

Length 68.5 in.
 Width 48 in.
 Height 40 in.
 Ground Clearance 6.25 in.

TREAD

32 in.

ANGLE OF APPROACH

90°

ANGLE OF DEPARTURE

90°

FUEL CAPACITY

3 gal.

BRAKES

ENGINE

TRANSMISSION

AXLES

SUSPENSION

TIRES

MAXIMUM SPEED

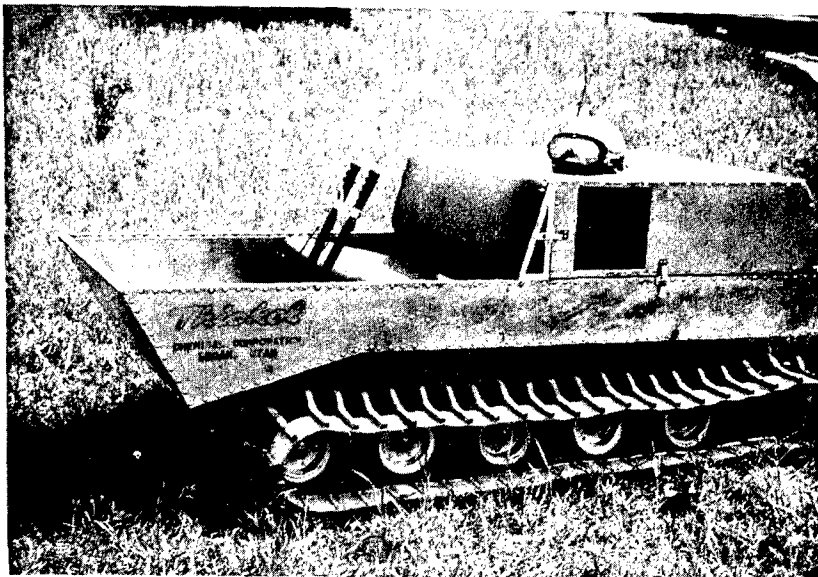
MINIMUM SPEED

RETAIL PRICE

Bendix 6 x 1-1/4
 Two Continental 2A016,
 5-1/4 HP each
 Automatic belt torque
 converter and reversing
 gear
 Differential action by
 varying engine speeds
 Solid axles
 4.10x6 Idler Tires
 14 mph
 2.3 mph
 Not available

PERFORMANCE

Vehicle did not participate due to mechanical damage caused in transit to test site.



THIOKOL MODEL 1501

MANUFACTURER: Thiokol Chemical Company, Logan, Utah

WEIGHTS

Curb Weight 750 lbs.
 Rated Payload 200 lbs.
 + driver

DIMENSIONS

Length 92.5 in.
 Width 48 in.
 Height 37 in.
 Ground Clearance 6 in.

TREAD

32 in.

ANGLE OF APPROACH

53°

ANGLE OF DEPARTURE

88°

FUEL CAPACITY

3 gal.

BRAKES

Bendix 6x1-1/4

ENGINE

OMC Model #100, 9HP

TRANSMISSION

1 cylinder, 4 cycle

Variable belt drive

with reversing gear

Drive only driven by

manually controlled

variable speed sheaves

AXLES

Swing axle

SUSPENSION

TIRES

4.10x6 Idler Tires

MAXIMUM SPEED

10 mph

MINIMUM SPEED

1.7 mph

RETAIL PRICE

Not available

PERFORMANCE

This floating vehicle was presented for exhibition only and did not actively participate in the demonstration.