

COWLES FOUNDATION FOR RESEARCH IN ECONOMICS

AT YALE UNIVERSITY

Box 2125, Yale Station
New Haven, Connecticut

COWLES FOUNDATION DISCUSSION PAPER NO. 203 (PART II)

Note: Cowles Foundation Discussion Papers are preliminary materials circulated to stimulate discussion and critical comment. Requests for single copies of a Paper will be filled by the Cowles Foundation within the limits of the supply. References in publications to Discussion Papers (other than mere acknowledgment by a writer that he has access to such unpublished material) should be cleared with the author to protect the tentative character of these papers.

SIMULATION OF SOCIO-ECONOMIC SYSTEMS

PART II: AN AGGREGATIVE SOCIO-ECONOMIC SIMULATION

OF A LATIN AMERICAN COUNTRY

Martin Shubik

August 8, 1966

D D C
RECORDED
OCT 3 1966

CLEARINGHOUSE FOR FEDERAL SCIENTIFIC AND TECHNICAL INFORMATION		
Hardcopy	Microfiche	
\$3.00	\$.75	62ppw
1 ARCHIVE COPY		

SIMULATION OF SOCIO-ECONOMIC SYSTEMS*

PART II: AN AGGREGATIVE SOCIO-ECONOMIC SIMULATION
OF A LATIN AMERICAN COUNTRY

Martin Shubik

1. Introduction

1.1. Sociological and Political Factors

2. Gross National Product or Expenditure

2.1. Consumption

2.2. Government

2.2.1. Government Expenditures

2.2.2. Government Revenue and Transfers

2.3. Investment in Physical Capital

2.3.1. Gross Investment by Commercial Whites

2.3.2. Gross Investment by Agricultural Whites

2.3.3. Gross Investment by Mestizos and Indians

2.3.4. Gross Investment by Foreign Nationals

2.4. Exports and Imports of Goods and Services

3. Human Capital

3.1. Input-Output Model

3.2. The Current Model

*Research undertaken by the Cowles Commission for Research in Economics under Contract Nonr-3055(00) with the Office of Naval Research.

4. Production and Distribution

4.1. Production

4.2. Distribution of Product

4.2.1. Wages

4.2.2. Gross Profits

4.2.3. Income to the Institutional Factor

4.3. The Consistency of Income and Expenditure

5. International Capital Flows

5.1. Capital Imports

5.2. Capital Exports

6. The Monetary System

7. Concluding Comments

7.1. Description of the Simulation

7.2. Simulation, Theory and Economic History

7.3. Output Display, Input Format and Data Banks

An Aggregative Socio-Economic Simulation*
of a Latin American Country

Martin Shubik** ***

The simple model constructed here is built to serve as an illustration of the uses of simulation and as a first approximation for a socio-economic model to be used in connection with the investigation of development problems in parts of Latin America.

The technique of simulation serves as an excellent data organizing device and framework for the conceptual scheme behind a national economic accounts system and aggregate financial reporting system. This simulation utilizes in part the national economic accounts format developed in the Country Study Program of the Yale Economic Growth Center¹ and the financial statistical reporting of the International Monetary Fund and World Bank.²

*ONR

**Joel Rubinstein, undergraduate extraordinary and programmer, played a most important role in the work involved in revising this model.

***I am especially indebted to J. Friedman who worked together with me on an earlier version of this paper; as well as R. and N. Ruggles for their comments, cooperation, and assistance. Furthermore, I am indebted to G. Blanksten, R. Holt, S. Mintz, W. Robichek and many others whose ideas and conversations on the possibility of interdisciplinary work led me to construct this model.

Although this first model is based primarily upon an aggregated national income system of a variety that is well known to economic studies, it contains several parameters and relations of a socio-economic variety, which are not commonly found in national income models.

The simulation described below has been constructed in a manner that employs what can at best be called "casual empiricism." It has been used to provide a structure for joint discussion and as a possible basis for research between anthropologists, economists, political scientists, sociologists, and others. The eventual goal however is to demonstrate that this type of simulation is a natural integrating device to provide a basis for discourse among operating planners, those concerned with the gathering of information or the administration of data gathering and information systems as well as behavioral scientists.

Part of the motivation behind this work is to show that relatively interesting and thought-provoking models can be constructed and examined quickly and relatively cheaply by means of computer simulation. Before validation problems must be faced, pre-validation problems must be overcome. These involve the sorting out of variables, the organization of common sense, uncommon sense, insights and "guesses," and the "playing" with models as a preliminary to well-defining structural relationships and devising methods for empirical verification of the chosen relationships.

Accuracy and validity should depend upon the question to be answered; models and questions which appear to be vague to the econometrician may thus have a place and use to the policy maker, political scientist, administrators, and others. These comments should not be interpreted as a defense of sloppy thinking. The gaps separating policy oriented studies, economic theory and econometrics as well as highly relevant sociological and political studies are large. The work here is addressed to providing an interlinkage for the different approaches.

1.1 Sociological and Political Factors

This simulation is directed towards portraying some of the basic features of a Latin American country with a large Indian population. Peru, Ecuador, Bolivia, Honduras, Guatemala and Nicaragua fall into this category. In particular, as is indicated in Part III, we concentrate on Ecuador.

Models of different countries undoubtedly have much in common; however, it is our belief that we are a long way from the "all-purpose" general simulator. A common methodology, data gathering procedures and common output formats with which to carry out comparative studies can be achieved. However, in detail models will differ from country to country.

Eventually it will be highly desirable to deal directly with such factors as degree and speed of urbanization, the effects

of religious beliefs and political structure. At this point neither time nor resources permit including these in the rudimentary model constructed here. Nevertheless the point that is fundamental to the approach adopted here is that in the study of socio-economic and political systems the best disaggregation may be a mixed disaggregation. For many purposes the choice between a disaggregation into say 40 economic sectors or 10 economic sectors and 4 social sectors should be made in favor of the mixed economic and social disaggregation.

Formal data often follow theories and purpose. Thus, the argument that the data do not exist or are hard to quantify is not a sufficient reason to abandon factors which may serve to provide much more explanation of processes of growth or change than do available easily quantifiable variables. A poor guess as to the effect of an important but hard to quantify variable may easily be of more use than an elegant time series of a slightly relevant variable.

In keeping with the above remarks, in this simulation the population of the country is broken down into four sociological groups which are broadly described as "commercial white," "agricultural white," mestizo and Indian. It should be emphasized that these are sociological and not racial categories. A full blooded Indian could easily have the social status of a "commercial white."

Another way of looking at this breakdown sociologically would be:

	Low Status	High Status
modern	mestizo	"commercial white"
traditional	Indian	"agricultural white"

2. Gross National Product or Expenditure

In the following sections we return to the more or less traditional path of listing the various identities and relations of a national accounting scheme. These are integrated with the breakdown into social classes and a scheme for social mobility. The economic system may be regarded as providing a framework upon which the more difficult to identify and quantify social and political factors can be added.

We begin by presenting the major expenditure components of gross national product. These show the basic components of GNP (consumption, investment, government, etc.), and the relationship of GNP to other important concepts such as personal income and disposable income. Functional relationships relating the major expenditure components to relevant variables are also set up. These may be interpreted as behavior and policy relations.

Gross national product is computed separately both from the expenditure and income sides of the balance sheet. In general these calculations do not match and the discrepancy is explained in terms of changes in the price level. Details of this are discussed in section 4.3.

- Let
- Y_t = Gross national product in period t in current currency
 - I_t = Gross private and public investment in current currency
 - C_t = Total consumption in current currency
 - $*G_{2,t}$ = Government expenditures on health education and welfare in current currency
 - $G_{3,t}$ = Other government expenditures
 - X_t^1 = Exports of goods and services in current currency
 - M_t^1 = Imports of goods and services in current currency
 - $M_t^{2,1}$ = Repatriated earnings to the country in current domestic currency
 - $X_t^{2,1}$ = Repatriated earnings from the country in current domestic currency.⁺

We have the accounting identity defining GNP from the viewpoint of expenditures:

$$(1) \quad Y_t = I_t + C_t + G_{2,t} + G_{3,t} + (X_t^1 - M_t^1) + (M_t^{2,1} - X_t^{2,1})$$

*See 2.2.1 for further discussion and breakdown

+From here on all references are to current domestic currency unless stated otherwise

Equation (2) specifies that total personal income equals Gross National Product minus depreciation and indirect business taxes and plus transfer payments. This may also be regarded as the sum of factor payments augmented by transfers. We are assuming that income from capital accrues to individuals.

$(\Pi_{5,t} - T_{5,t}^2)$ is after tax profits of foreign nationals and $\Pi_{6,t}$ is profits of government owned enterprise.

Y_t^1 = Total personal income

D_t = Depreciation (Capital Consumption Allowances)
in constant currency

T_t = Total taxes

T_t^1 = Indirect business taxes

Y_t^0 = Gross domestic product in constant currency

P_t = Domestic price level

T_t^2 = Profits taxes

R_t = Transfer payments to individuals

Π_t = Total profit

$\Pi_{i,t}$ = Profit of the i-th group ($i = 1, \dots, 6$)

$$(2) \quad Y_t^1 = (Y_t^0 - D_t)P_t + (M_t^{2,1} - X_t^{2,1}) - T_t^1 + R_t - T_t^2 \\ - (\Pi_{5,t} - T_{5,t}^2) - \Pi_{6,t}$$

where the first two terms express gross national product calculated from the production side of the accounts.

We consider the population to be broken down into four socio-economic categories in the countries of our interest, (for example: Peru, Bolivia, Ecuador, Mexico and Guatemala). They are: "Commercial" Whites ($i=1$), "Agricultural" Whites ($i=2$), Mestizos ($i=3$), and Indians ($i=4$). The color divisions are not actually racial in South and Central America. An approximate criterion is that a detribalized Indian becomes a mestizo. A mestizo who attains an appropriate degree of wealth and education may become a white. These divisions will be discussed in further detail in subsequent sections. The subscript 5 is used to denote foreign nationals in the country; while 6 refers to government.

$$Y_{i,t}^1 = \text{Personal income of the } i\text{-th socio-economic category}$$

We have the identity

$$(3) \quad Y_t^1 = Y_{1,t}^1 + Y_{2,t}^1 + Y_{3,t}^1 + Y_{4,t}^1.$$

In equation (4) disposable income (Y_t^2) is defined as income minus taxes levied on personal income.

$$Y_t^2 = \text{disposable income}$$

T_t^3 = personal income tax

$Y_{i,t}^2$ = disposable income of i-th socio-economic category

$$(4) \quad Y_t^2 = Y_t^1 - T_t^3 = Y_{1,t}^2 + Y_{2,t}^2 + Y_{3,t}^2 + Y_{4,t}^2.$$

2.1 Consumption

All of the above equations have been accounting identities. At this point we must specify the first behavioral relationships.

C_t = total consumption

$C_{i,t}$ = consumption of the i-th group

N_t = total population

$N_{i,t}$ = population of the i-th socio-economic group.

Equation (5) is a mere accounting identity summing consumption in the different classes.

$$(5) \quad C_t = \sum_{i=1}^4 C_{i,t}.$$

$$(6) \quad C_{i,t} = \alpha_{i,1} N_{i,t} + \alpha_{i,2} Y_{i,t}^2$$

In equation (6) we have assumed as a first approximation that per capita consumption can be described as a linear function of per capita disposable income. If we believed that (6) held for

all incomes and over considerable lengths of time we would run into difficulties with assigning values of $\alpha_{1,1} > 0$ as this would leave open the possibility that individuals with no income could continue to consume indefinitely.

The $\alpha_{1,1}$ are not dimension free parameters but must be measured in terms of {money/people}.

2.2. Government

Government activities may be grouped, for national accounts purposes, into two broad categories: expenditures, which represent an allocation of part of gross national product, and taxes and transfers, which are, of course, means of redistributing income. The next section takes up government expenditures and, although taxes and transfers do not necessarily belong here, they are taken up in Section 2.2.2.

2.2.1 Government Expenditures

Government expenditures in our model are divided into three categories, which we believe are particularly relevant for a development study: gross investment; health, education and welfare; and a residual category. These are denoted:

$G_{1,t}$ = gross investment by government

$G_{2,t}$ = government expenditures on health, education
and welfare

$G_{3,t}$ = other government expenditures

G_t = total government expenditures (excluding transfers)

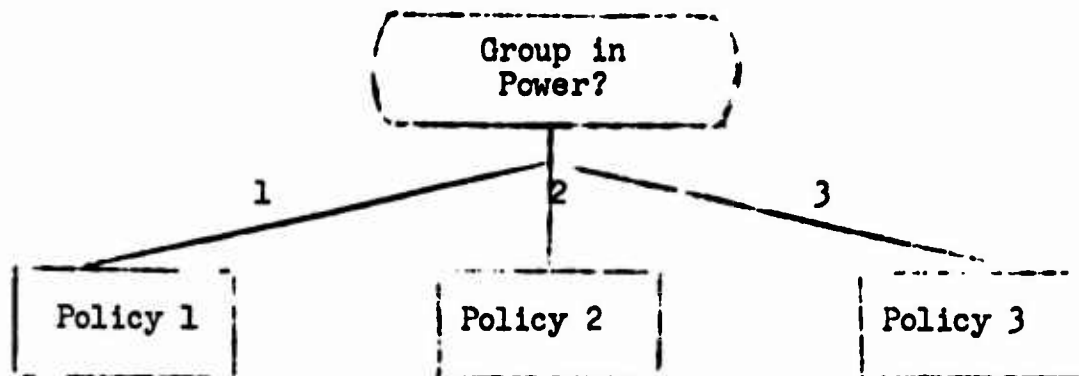
R_t = transfers

Equation (7) below gives the relevant accounting identity:

$$(7) \quad G_t = R_t + G_{2,t} + G_{3,t}$$

The breakdown of government expenditures will be determined by the group in power and represents one of the politico-economic aspects of this model which needs to be investigated in detail. For example, it appears to be worthwhile to distinguish between two types of "revolutionary" change in a Latin American state; the first a change in the "palace guard" which might result in a shift in the biases between landed and commercial or industrial interests; the second, a deep social revolution such as that of Mexico in 1911 or the recent Cuban revolution.

In the content of this model we eventually will wish to introduce political control alternatives explicitly. The method for doing this is indicated in the flow diagram below. However, we limit ourselves by the assumption that the governmental group in power will remain fixed over the period under consideration.



Until a satisfactory first approximation for adding political features has been made, two approaches are adopted for the next three behavioral equations.

The first is to leave them open for exogenous inputs. This procedure can be defended in several ways.

In many countries government policy may be a critical item in the determination of growth and welfare. Given the current state of social, political and economic information and the difficulties in constructing models of politico-economic process, in checking previous histories, and in testing the effects of policies the use of historical data or of plans both simplifies problems of validation and permits experimentation with planning procedures.

Once more it must be stressed that such an approach is not offered as an alternative to econometric methods. In the construction of models for development, planning, and the control of economies it appears to be desirable to distinguish between behavioral relations which are or are not amenable to economic

analysis, depend upon large numbers of independent actions and/or exhibit some special features leading to stability in structure over a reasonable period of time. Those which exhibit these properties are amenable to an econometric approach. Those which do not, yet may be important in describing growth processes, must be approached differently.

Reasons for opposing this approach are that it introduces too many additional degrees of freedom into the model and increases the complexity and unwieldiness of the input.

The second approach is to ignore all the caveats just made and to try to specify behavioral equations.

As a simple first approximation we assume that government fixed capital formation is given by:

$$(8) \quad G_{1,t} = \beta_1 + \beta_2 Y_{t-1} + \beta_3 [i_t^{2,2} + i_t^{2,3}]$$

Here government investment is a simple linear function of lagged gross national product and transfers and long term capital flows from abroad.

$i_t^{2,2}$ = Long term capital inflows

$i_t^{2,3}$ = Transfer payments from abroad

Government expenditures on health, education and welfare are assumed to depend on gross national product and total population during the previous period. This allows for an increase in health, education and welfare expenditures as either population or GNP rises. This is shown below in equation (9).

$$(9) \quad G_{2,t} = \beta_3 + \beta_4 Y_{t-1} + \beta_5 N_{t-1}$$

Other government expenditures are assumed to grow with population.

$$(10) \quad G_{3,t} = \beta_6 N_{t-1} P_{t-1}$$

In Ecuador there is considerable earmarking of taxes with the result that automatic transfer of revenues to various of the 18 provinces, 97 municipalities, and around 700 other autonomous entities dilutes the Central Government's abilities to use the national public resources.

2.2.2. Government Revenue and Transfers

Revenues can be considered in three broad headings:

Direct taxes,

Indirect taxes, and

Non tax revenue.

Under the first there are income tax, inheritance and gift taxes and export taxes. Indirect taxes include excise taxes, consumption and sales taxes and import taxes. The non-tax revenues include income from property and charges for services.

In this relatively simplified model only four taxes, two direct and two indirect, are considered. They are personal income tax, profits, indirect business taxes other than tariffs and tariffs.

The basic tax identities are given below:

$$(11) \quad T_t = T_t^1 + T_t^2 + T_t^3$$

$$(12) \quad T_t^1 = T_t^{1,1} + T_t^{1,2}$$

T_t = total tax revenue

T_t^1 = indirect business taxes

T_t^2 = taxes on profits

T_t^3 = personal income taxes

$T_t^{1,1}$ = indirect business taxes, except tariffs

$T_t^{1,2}$ = tariffs

Equation (11) gives total tax revenue as the sum of indirect business taxes ($T_t^1 = T_t^{1,1} + T_t^{1,2}$) and income taxes ($T_t^2 + T_t^3$). In equations (13) and (14) $T_t^{1,1}$ is assumed proportional to gross national product, and $T_t^{1,2}$ to imports of goods and services:

$$(13) \quad T_t^{1,1} = \beta_7 Y_t$$

$$(14) \quad T_t^{1,2} = \beta_8 M_t^1$$

The tax on profits is assumed proportional to profits earned in the private sector, except that it does not become negative:

$$(15) \quad T_{i,t}^2 = \max [\beta_9 \pi_{i,t}, 0] \quad i = 1, 2, 3, 5.$$

$\pi_{6,t}$ are profits of government owned enterprise and hence are not taxed.

Personal income taxes are assumed proportional to personal income; however, the constant of proportionality will not be the same for all four socio-economic groups; there are progressive tax rates, not fully reflected in this approximation.

$$(16) \quad T_{i,t}^3 = \alpha_{i,3} Y_{i,t}^1$$

$$(17) \quad T_t^3 = \sum_{i=1}^4 T_{i,t}^3$$

It is clear from equation (2) that personal income includes the after tax profits of the four socio-economic groups. Thus, profits are double-taxed in this model. Tax laws vary considerably from country to country on this point.

Transfers to the government from abroad are assumed exogenous to the model, being determined by the foreign policies

of the country and of other nations. Transfers scheduled by the government to the four socio-economic groups are given below:

$$(18) \quad R_t = \sum R_{i,t}$$

$$(19) \quad R_{i,t} = \alpha_{i,4} Y_{t-1} - \alpha_{i,5} \min [(Y_{t-1} - Y_{t-2}), 0]$$

Equation (19) by definition cannot have a negative value.

This equation should be considered as a key policy control and should either be exogenous or merits careful empirical investigation.

Here a crude approximation has been used linking transfers to GNP with a simple countercyclical term.

Total government expenditure is:

$$(20) \quad E_t = G_{1,t} + G_{2,t} + G_{3,t} + R_t ;$$

and total revenues are:

$$(21) \quad REV_t = T_t + M_t^{2,3} + \Pi_{6,t}; \text{ where:}$$

E_t = government total expenditures

REV_t = government total revenues

$M_t^{2,3}$ = transfers to the government from abroad

$\hat{M}_t^{2,3}$ = effective transfers to the government from abroad

$R_{i,t}$ = transfers by the government to the i-th socio-economic group

2.3 Investment in Physical Capital

Five special symbols which are used below are now noted. Their detailed definitions are given in 4.3.3. They are:

$$\hat{G}_{1,t}, \hat{G}_{2,t}, \hat{G}_{3,t}, \hat{R}_t, \hat{I}_t^{2,3}, \hat{I}_{1,t}, \hat{I}_{2,t}, \hat{I}_{3,t}, \text{ and } \hat{I}_{5,t}.$$

$\hat{G}_{1,t}$ stands for "effective" government investment as contrasted with $G_{1,t}$ which stands for government investment; and similarly for the others.

$$(22) \quad \hat{G}_{1,t} = (1 - \alpha_{1,22} - \alpha_{2,22}) G_{1,t}.$$

There are similar equations for all of the others.

In this section we consider gross investment by the four socio-economic groups and by foreign nationals. Government investment was discussed above in Section 2.2.1. One feature related to government investment needs to be specified. That is capital stock.

$$(23) \quad K_{6,t} = (1 - \alpha_{6,8}) K_{6,t-1} + \hat{G}_{1,t}/P_t.$$

$K_{i,t}$ = the capital stock owned by members of the i-th socio-economic group

2.3.1. Gross Investment by Commercial Whites

Without specifying the country and combining some casual empiricism with sociological and economic considerations one form of an investment function for the commercial group which appears to be worth investigating is given in (24a):

$$(24a) \quad I_{1,t} = \text{Max} \left[0, \left\{ \alpha_{1,6} \left(\frac{Y_{t-1} - Y_{3,t-1}^2}{P_{t-1}} \right) - \left(\frac{Y_{t-2} + Y_{3,t-2}^2}{P_{t-2}} \right) + \alpha_{1,7} \left(\frac{Y_{3,t-1}^2}{P_{t-1}} - \frac{Y_{3,t-2}^2}{P_{t-2}} \right) + \alpha_{1,8} (K_{1,t-1} (P_{t-1})) \right\} \right]$$

It is the sum of two accelerator terms and a depreciation term. The first accelerator term involves changes in GNP leaving out changes in mestizo disposable income, while the second accelerator term involves changes in mestizo disposable income. It is assumed that change in mestizo income is of particular import to investment in an economy as its growth represents the possible expansion of a lower middle class market. A serious drop in this income may also be an important factor in the growth of political instability.

The determination of reasonable investment functions is obviously one of the most critical empirical problems in the construction of this type of model. In the case of Ecuador, bank policy, the availability of foreign long term finance and the size of the

export market appear to have been dominant factors. "Betting on bananas" appears to have been a policy followed recently.

In view of the considerations noted above an alternative gross investment function is suggested in (24b):

$$(24b) \quad I_{1,t} = \text{Max} \left[0, \left\{ \alpha_{1,6} X_t^1 + \alpha_{1,8} (K_{1,t-1}) (P_{t-1}) \right\} \right]$$

This leaves out of consideration the future possible importance of the internal market and the sociological factors which may determine these aspects.

Depreciation in fixed terms is given by:

$$(25) \quad D_{i,t} = \alpha_{i,8} K_{i,t-1}$$

Capital stock for the first socio-economic group

$$(26) \quad K_{1,t} = (1 - \alpha_{1,8}) K_{1,t-1} + \hat{I}_{1,t}/P_{1,t}$$

2.3.2 Gross Investment by Agricultural Whites

Investment in this group is taken to depend on disposable income within the group. For these people investment may be more a matter of status than of rational calculation. It has been suggested, for instance, that the social role of "patron" is in some areas still of importance. Thus, the additions to the hacienda, finca, or estancia may be a manifestation of the role rather than a pure economic act.

$$\begin{aligned}
 (27) \quad I_{2,t} &= \alpha_{2,6} + \alpha_{2,7} Y_{2,t-1}^2 + \alpha_{2,8} (K_{2,t-1}) (P_{t-1}) \\
 &\quad \text{if } \frac{Y_{2,t-1}^2}{N_{2,t-1}} \geq \beta_{31} P_{t-1}, \\
 &= \alpha_{2,8} (K_{2,t-1}) (P_{t-1}) \\
 &\quad \text{if } \frac{Y_{2,t-1}^2}{N_{2,t-1}} < \beta_{31} P_{t-1}
 \end{aligned}$$

Capital stock for the second socio-economic group is given by:

$$(28) \quad K_{2,t} = (1 - \alpha_{2,8}) K_{2,t-1} + \hat{I}_{2,t} / P_t$$

2.3.3 Gross Investment by Mestizos and Indians

In general, mestizos have little surplus for investment; nevertheless we assume that:

$$(29) \quad I_{3,t} = Y_{3,t-1}^2 - C_{3,t-1}$$

This indicates that they invest their savings, but with a time lag. At first glance and historically this factor may be small yet as far as policy, social mobility and political stability it may be of considerable importance.

There is the standard accounting equation for capital stock:

$$(30) \quad K_{3,t} = (1 - \alpha_{3,8}) K_{3,t-1} + \hat{I}_{3,t} / P_t$$

Our initial assumption is that investment by the Indian sector is negligible. In this model we omit further consideration of it.

2.3.4 Gross Investment by Foreign Nationals

The final category of investment is investment by foreign nationals. Foreign nationals are probably more ready, willing and able to pull out of a country when the country appears to be heading toward social or political instability than are the local citizens. One simple way to represent this is with a "domestic stability index." The index could be a function of the length of time the present government has been in power, the recent growth rate of gross national product and the growth rates of real wages for the various socio-economic groups. Usually the index will be the higher, and the country the more stable, the higher are these variables. If the index is below a crucial value, the foreign investors seek to pull out at the fastest possible rate, which is the maximum depreciation rate.* The diagram below represents the investment decision for foreign investors:

*It is possible that some assets can be transported out of the country, but in general this is unlikely.

and the cost of various levels of maintenance. A foreign investor wishing to pull out of a country due to the instability of the political situation may expect expropriation or wholesale destruction of his investment. If so, he may want to work his capital as hard as possible without spending anything on it until it has no value left.

$\alpha_{5,8}$ is the maximal rate of depreciation relevant to when the capital is used up as quickly as possible. $\alpha_{5,7}$ is the "normal" rate, applicable when the investor expects to stay in the country indefinitely. It will be seen later that the stability index has a bearing on international capital movements.

In many debates on policy the role of foreign investment is usually discussed. The actual nature of the foreign investment function may depend heavily upon explicit laws, special economic opportunities and the faith placed in the political and economic ambiente.

An interesting use of a model of this type is to carry out gaming exercises for the exploration of policy. A way in which the simulation can be used for gaming is to have a set of players select foreign private investment and other capital flows exogenously, while the other team controls tariffs and other aspects of government policy.

2.4 Exports and Imports of Goods and Services

The demand for exports is assumed to be autonomous, being determined by conditions abroad which are essentially unaffected by developments in the country. In some countries such as Ecuador⁺ or Guatemala four or five items account for 75 - 90% of exports. A reasonably satisfactory model for exports could be constructed by including some features of prices and demands for these specific commodities.³ Even this disaggregation is not completely satisfactory as it is in general the case that the commodities traded are highly subjected to oligopolistic influence. Hence, a good model of foreign trade needs to take this into account.

We treat the demand for exports as exogenous. Exports could, of course, be considerably less than the demand for exports; however, for crops such as bananas or rice, it is possible to increase production in a year.

From the viewpoints of operational gaming, planning, and growth studies it is desirable to experiment with alternative conditions on exports and to carry out separate studies to locate the factors to which exports are sensitive.

Imports depend upon consumption, investment, foreign transfers, and credit conditions as well as export and import price levels, tariffs, and direct controls and bank policy. Without going

⁺In Ecuador, for example, bananas, coffee, cacao and rice form more than 90% of exports.

into detail a crude approximation has imports as a linear function of exports lagged by a period. The argument behind this approximation is that the complex of tariffs and direct restrictions tends to keep imports below the levels that they would reach without them. These are, however, often linked to the size of earnings from abroad and bureaucratic slowness introduces a time lag.

$$(33) \quad X_t^1 = \text{an exogenous series for exports}$$

$$(34) \quad M_t^1 = \beta_{12} + \beta_{13} X_{t-1}^1$$

3. Human Capital

A very important ingredient in successful growth for an underdeveloped country, indeed for any country, is investment in a healthy, educated population. The importance of attempting to measure the effect of health, education and welfare (HEW) expenditures on productivity is obvious, as are the difficulties in doing so.

Below we sketch two models for the measurement of human capital. The first is an input-output model which we do not utilize at present. It is included because it is our hope that this basic approach will prove both feasible and extremely fruitful. The second approach, which we are utilizing for the first approximation, includes a method* for converting the labor force of each socio-economic group into labor units which are comparable

*This method was primarily suggested and devised by James Friedman.

between classes. The number of standard labor units into which a member of the labor force converts depends on the HEW expenditures made on members of his group. While this method leaves something to be desired, it does represent a beginning at the difficult task of measuring labor productivity as a function of HEI.

3.1 Input-Output Model

In Table I, below, appears a simple input-output scheme. Each column is an activity. The negative coefficients are outputs and the positive, inputs. Thus, looking at the first activity, it shows that if we put in one infant, $\gamma_{6,1}$ of social and medical resources and $\gamma_{7,1}$ of education resources, we will get as outputs one child and $\gamma_{8,1}$ of labor.

Infants	+1				
Children	-1	+1			
Young Adults		-1	+1		
Middle Aged			-1	+1	
Old				-1	+1
Costs: Social, Medical	$\gamma_{6,1}$	$\gamma_{6,2}$	$\gamma_{6,3}$	$\gamma_{6,4}$	$\gamma_{6,5}$
Costs: Education	$\gamma_{7,1}$	$\gamma_{7,2}$	$\gamma_{7,3}$	$\gamma_{7,4}$	$\gamma_{7,5}$
Labor Output	$\gamma_{8,1}$	$\gamma_{8,2}$	$\gamma_{8,3}$	$\gamma_{8,4}$	$\gamma_{8,5}$

TABLE I

We have divided the life span into five stages here and have implicitly assumed that at each stage there will be a linear relationship linking the labor output (measured in some standard unit) with the H₀ inputs.

In order to study the effectiveness of the H₀ programs we might wish to expand the number of activities shown in Table I to account for different inputs in education, for example. As a good second approximation four social groups, each portrayed by five activities, should provide sufficient information for the estimation of human capital.

If we are able to measure labor output in terms of a standardized dollar and if we are willing to specify a discount factor in the economy we can calculate a value for an individual in the t-th age group.

$$V_t = \sum_{i=t}^5 \rho^{i-t+1} (\gamma_{0,i} - \gamma_{6,i} - \gamma_{7,i})$$

where

V_t = the human capital value of an individual in age group t

ρ = discount rate

$\gamma_{k,i}$ = input output coefficient

3.2 The Current Model

The model which we look at in this section averages over all members of a socio-economic group identically, regardless of age and sex. It would not be difficult to expand it to keep track of the population within each socio-economic group by age groups. The steps in the model are two: 1) The size of the population is computed, taking into account births, deaths, and transfers from one class to another. 2) The labor force is converted into standard labor units, taking into account the per capita HDW expenditures made in recent years.

Let:

N_t = Total population in time t

$N_{i,t}$ = population of i -th group in time t

A_t = deaths in total population during period t

$A_{i,t}$ = deaths in i -th group

B_t = births in total population

$B_{i,t}$ = births in i -th group

$F_{1,t}$ = number of people who transfer from 3rd (mestizo) group to group 1 (Commercial White)

$F_{3,t}$ = number who transfer from 4th (Indian) group to 3rd

Some basic bookkeeping relationships which involve the variables defined above are:

$$(35) \quad N_t = N_{t-1} + B_{t-1} - A_{t-1}$$

$$(36) \quad N_{1,t} = N_{1,t-1} + B_{1,t-1} - A_{1,t-1} + F_{1,t-1}$$

$$(37) \quad N_{2,t} = N_{2,t-1} + B_{2,t-1} - A_{2,t-1}$$

$$(38) \quad N_{3,t} = N_{3,t-1} + B_{3,t-1} - A_{3,t-1} - F_{1,t-1} + F_{3,t-1}$$

$$(39) \quad N_{4,t} = N_{4,t-1} + B_{4,t-1} - A_{4,t-1} - F_{3,t-1}$$

Equation (35) gives total population in period t as population in period $t-1$ plus births and minus deaths during period $t-1$. Equations (36) through (39) are the analogous equations for each group. The number of inter-group transfers are allowed in equations (42) and (43). The relationships governing births and deaths are given below:

$$(40) \quad A_{i,t-1} = \alpha_{i,30} N_{i,t-1}$$

$$(41) \quad B_{i,t-1} = \alpha_{i,31} N_{i,t-1}$$

Transfers from one class to another are considered to occur when a mestizo acquires sufficient wealth and position to be, in fact, a member of the commercial white community; or when an Indian turns outward from his tradition-bound environment and tries to get along in the more market oriented part of society. The two transfer equations

are:

$$(42) \quad F_{1,t-1} = \alpha_{1,9} N_{3,t-1} \left(\frac{N_{1,t-1} \cdot H_{3,t-1}}{(N_{1,t-1} + N_{3,t-1})^2} \right) \left(\alpha_{1,10} \frac{Y_{3,t-1}^2}{N_{3,t-1}} + \alpha_{1,11} \frac{H_{3,t-1}}{N_{3,t-1}} \right) \frac{1}{P_{t-1}}$$

$$*(43) \quad F_{3,t-1} = \alpha_{3,9} N_{4,t-1} \left(\frac{H_{3,t-1} \cdot H_{4,t-1}}{(H_{3,t-1} + H_{4,t-1})^2} \right) \left(\alpha_{3,10} \frac{Y_{4,t-1}^2}{N_{4,t-1}} + \alpha_{3,11} \frac{H_{4,t-1}}{N_{4,t-1}} \right) \frac{1}{P_{t-1}}$$

In both these equations, the first expression in brackets is the proportion of the combined population of the two groups which is in one of the classes multiplied by the proportion in the other. This proportion is modified by a parameter, $\alpha_{i,27}$, and by an expression involving per capita disposable income for the group and HED expenditures. The result is modified by the size of the group from which people will transfer. The equations are modified for the effect of price level. It is assumed that as HED and per capita income rise, the numbers which will transfer rise.

*A consistency check requires that $\alpha_{3,9} \left[\frac{1}{2} \right] \left[\dots \right] \leq 1$. Otherwise the size of population transfer would be greater than the population.

The next step is to determine the labor force for each group and then convert into standard labor units.

$$(44) N_{i,t}^1 = \alpha_{i,12} N_{i,t}$$

$$(45) N_{i,t}^2 = e^{\left(\alpha_{i,13} - \frac{\alpha_{i,14}}{RH_{i,t}^1 + \alpha_{i,15}} \right)} N_{i,t}^1$$

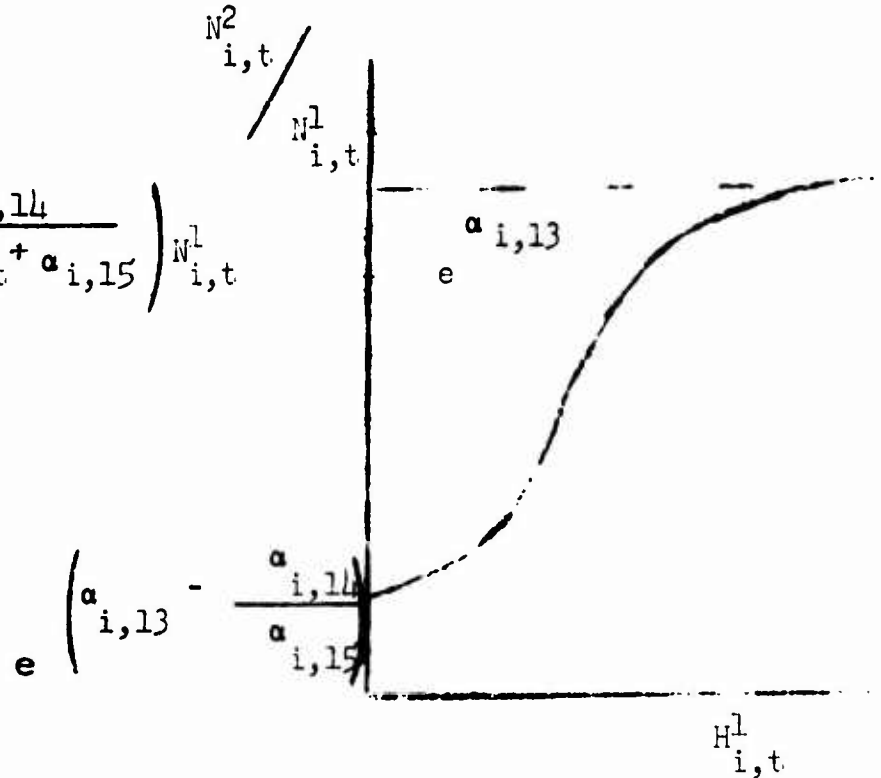


Figure 1

where $H_{i,t}$ = total HEI spent on group i
 $N_{i,t}^1$ = labor force of group i
 $N_{i,t}^2$ = number of standard labor units represented by the labor force of group i
 $RH_{i,t}^1$ = real per capita HEI on group i, summed for $\beta + 1$ years
 16

$\alpha_{i,12}$ is the proportion of the i-th group which is in the labor force. The general shape and characteristics of equation (45) are illustrated in Figure 1. The minimum value of $N_{i,t}^2$, when $RH_{i,t}^1$ is zero, is

$N_{i,t}^1 e^{\alpha_{i,13} - \alpha_{i,14}/\alpha_{i,15}}$. This is constrained to be non-negative.

HEW shows increasing, then decreasing returns. The marginal product of HEW in terms of labor units is always positive, although it is asymptotic to zero and total labor units is asymptotic to $N_{i,t}^1 e^{\alpha_{i,13}}$.

The derivation of $RH_{i,t}^1$ remains:

$$(46) \quad H_{i,t} = \alpha_{i,16} + \alpha_{i,17} C_{i,t} + \left\{ \alpha_{i,18} + \alpha_{i,19} \hat{G}_t^2 \right\}$$

$$(47) \quad \sum_{i=1}^4 \alpha_{i,18} + \alpha_{i,19} \hat{G}_t^2 = \hat{G}_t^2$$

$$(48) \quad RH_{i,t} = H_{i,t} / P_{t-1}$$

$$(49) \quad RH_{i,t}^1 = \sum_{\theta=t-\beta_{16}}^t \frac{RH_{i,\theta}}{N_{i,\theta}} = RH_{i,t-1}^1 - \frac{RH_{i,t-\beta_{16}-1}}{N_{i,t-\beta_{16}-1}} + \frac{RH_{i,t}}{N_{i,t}}$$

According to equation (46), the HEW expenditures on the i-th group are a linear function of the consumption expenditures of the group and of government HEW expenditures. Equation (47) is merely a constraint to assure that the whole of \hat{G}_t^2 is parcelled out among the four groups.

Equation (48) changes the current HEW expenditure into fixed currency terms. Equation (49) is the sum of per capita HEW in group i for the current year and the β_{16} preceding years.

It must be noted that the definition of HEW expenditures presents several difficult problems both in theory and in national accounts classification.

4. Production and Distribution

In this section the treatment of production and distribution is outlined. The production side of the model utilizes an aggregate Cobb-Douglas production function. The assumptions about distribution are a variant of traditional marginal productivity theory.

The program includes the more general C.E.S. production function for purposes of experimentation; however, discussion here is limited to the Cobb-Douglas. In any expansion of a model of this type a natural step would be to replace this total aggregate by a small input-output table.

4.1 Production

We assume the existence of three factors: capital, labor, and the "institutional" factor. The third of these is not represented directly in the production function, and is discussed below.

Let:

Y_t^0 = gross domestic product in constant currency

$$(50) \quad P_t Y_t^0 = Y_t - M^{2,1} + X^{2,1}$$

Equation (50) contains an accounting identity which defines gross domestic product as the sum of all goods and services produced within the country. Equation (51) expresses gross domestic product, as an output, related to the labor force and capital stock as inputs. This "aggregate production function" we have assumed to be a Cobb-Douglas function.*

$$(51) \quad Y_t^0 = \beta_{17} K_{t-1}^{\beta} N_t^{1-\beta} e^{\beta_{18} 32^t} \quad (0 < \beta_{18} < 1)$$

$$(52) \quad K_t = \Sigma K_{i,t}$$

Equation (52) is an accounting equation for the total worth of capital stock. In general capital stock figures are difficult to obtain and furthermore there are many conceptual problems to be faced even in defining them in monetary terms.

*modified by the term $e^{\beta_{18} 32^t}$ to account for technological progress

4.2 Distribution of Product

We assume that generally labor and capital are paid in proportion to their marginal productivity with the exception of the Indian sector of the population where institutional rigidities have an influence.

An allocation of income is also made to an "Institutional Administrative" factor. The appropriate licenses, administrative blessings, cooperation of local authorities, adequate protection against institutional delays and so forth all are part of a production process and may be regarded as very valuable factors. They are, in general, resources with increasing returns to scale. Essentially it costs the mayor little extra to sign additional permissions to build, but each permission is nevertheless needed as a factor. There is possibly an upper bound or a capacity beyond which an individual cannot go without dipping too heavily into his "political capital" (a quantity we do not attempt to measure at this point); hence a given administrative system may be regarded as having a capacity in the same way as does a bridge or railway system.*

*Up to a point he may actually be increasing his "political capital" when he grants permissions.

4.2.1 Wages

The returns to labor in the several groups are given by:

$$(53) \quad W_{i,t} = \alpha_{i,20} \frac{\partial Y_t^0}{\partial N_t^2} (N_{i,t}^2) (P_{t-1}) \quad i = 1, 2, 3$$

and

$$(54) \quad W_{4,t} = \left(\alpha_{4,20} \frac{\partial Y_t^0}{\partial N_t^2} P_{t-1} + \beta_{19} + \xi_{3,t} \right) N_{4,t}^2$$

Where the $\alpha_{i,20}$ for $i = 1, \dots, 4$ are proportionality factors

which will be discussed further below.

$W_{i,t}$ = labor income of i-th social group in
constant currency

β_{19} = a traditional constant component of
income to Indians

ξ_3 = a random variable

In equations (54) and (55) P_{t-1} is used to show the effect of price level indicating a "price-stickiness" in the adjustment of wages.

The equations (53) are merely the standard returns to labor in a competitive economy modified by the $\alpha_{i,20}$. The equation (54) is a modified version of (53) where we assume that the income to the

Indians has three components, the first which is in proportion to marginal productivity, the second a constant in money terms determined from socio-economic considerations and the third a random variable determined by such things as weather and crop conditions.*

4.2.2 Gross Profits

Given the way we have written the production function for gross domestic product, the profit equations must include depreciation coverage as part of the returns to capital. In a competitive market we would have:

$$(55) \quad \pi_{i,t} + D_{i,t} P_t = \alpha_{i,21} \frac{\partial Y_t^0}{\partial K_{t-1}} K_{i,t-1} P_t \quad i = 1,2,3,5,6$$

Where $\alpha_{i,21}$ = factors of proportionality in return to capital.

4.2.3 Income to the Institutional Factor

The third set of equations (56) given below represents the sources of payments to the institutional administrative factors. We assume that there are primarily eight sources, being respectively government investment and transfers, and private investment.

*There is the difficult problem of imputing national income monetary returns to groups only partially in the money economy.

$Z_{i,t}$ = Income to the institutional factor supplied by the i -th social group.

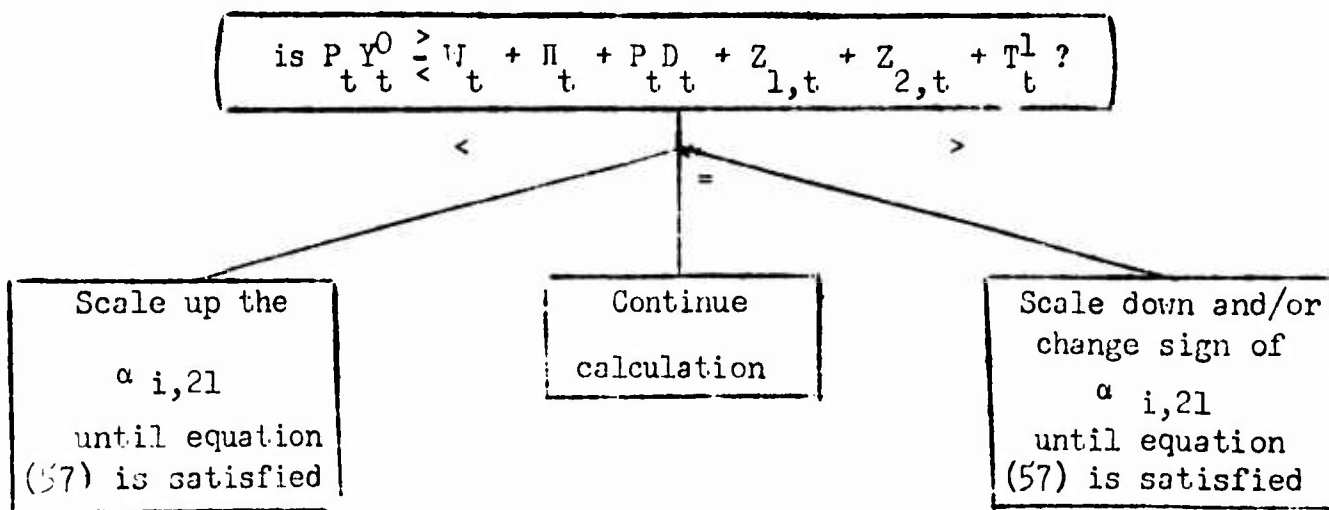
$$(56) \quad Z_{i,t} = \alpha_{i,22} G_{1,t} + \alpha_{i,23} (G_{2,t} + G_{3,t}) + \alpha_{i,24} R_t + \alpha_{i,25} M^{2,3} + \alpha_{i,26} I_{1,t} + \alpha_{i,27} I_{2,t} + \alpha_{i,28} I_{3,t} + \alpha_{i,29} I_{5,t} \quad i=1,2$$

We assume that income from this source only accrues to the commercial and agricultural whites. It indicates that they obtain a part of the funds spent by government, in transfers and in investment in their role as controllers of the bureaucratic structure of the country. A more socio-politically oriented model would have these shares depend upon the party in power and its major backing.

There remains the problem of consistency checking that the identity

$$(57) \quad P_t Y_t^0 = \sum_{i=1}^4 W_{i,t} + \sum_{i \neq 4}^6 \Pi_{i,t} + P_t D_t + \sum Z_{i,t} + T_t^1$$

must hold. This can be ensured in the manner shown in the flow diagram below.



In order to guarantee that (57) holds we adjust the scale factors to the returns to capital. This implies that administrative costs and indirect business taxes, then labor, have the priority in being satisfied. After they have been met then the residual is paid to the other factor. A full explanation of the adjustment is given below.

4.3. The Consistency of Income and Expenditure

A mixture of behavior and accounting equations has been written to describe the income and expenditures of all sectors and the interaction of foreign trade and financial flows. In order to bring consistency to the income and expenditure sides we introduce a gross correction in terms of a price level which is assumed to be endogenous to the system. The model given here for the whole economy is treated as open in the sense that foreign exchange levels are treated as exogenous.

Equations (50)

$$P_t \cdot Y_t^0 = Y_t - M_t^{2,1} + X_t^{2,1}$$

and (1)

$$Y_t = I_t + C_t + G_{2,t} + G_{3,t} + (X_t^1 - M_t^1) + (M_t^{2,1} - X_t^{2,1})$$

are sufficient to fix a price level when combined with (57).

Y_t^0 is determined directly from the Cobb-Douglas equation (51).

$M_t^{2,1}$ is determined by (59) and does not involve P_t or the necessity to determine any set of variables simultaneously. This is not the case

with the identity (57). If we require this to hold we can do so by violating equation (55) and defining profits to be a residual. We make a further simplification that all profit sectors are hit equally by changes in economic conditions and the value of money[†]. This is equivalent to assuming that there exists a variable x modifying the parameters $\alpha_{i,21}$. We may rewrite (57) as:

$$(I) \quad \left[\begin{array}{c} Y_t^0 - x \sum_{i=1}^6 \alpha_{i,21} \frac{\partial Y_t^0}{\partial K_{t-1}} K_{i,t-1} \\ \vdots \end{array} \right] P_t = \sum_{i=1}^4 W_{i,t} + \sum_{i=1}^2 Z_{i,t} + T_t^1$$

Substituting (50) into (I) we obtain:

$$(II) \quad P_t Y_t^0 = I_t + C_t + G_t^2 + G_t^3 + (X_t^1 - M_t^1)$$

We may solve I and II simultaneously in order to obtain the x and the P_t .

In equation II the C_t are dependent on current profits; hence involve both the x and the P_t , as is seen below:

$$C_{i,t} = \alpha_{i,1} N_{i,t} + \alpha_{i,2} Y_{i,t}^2 \quad \text{from (6)} \quad i = 1, \dots, 4$$

$$Y_{i,t}^2 = (1 - \alpha_{i,3}) Y_{i,t}^1 \quad \text{from (3 & 15)} \quad i = 1, \dots, 4$$

and (III)

$$Y_{i,t}^1 = x (1 - \beta_9) \alpha_{i,21} \frac{\partial Y_t^0}{\partial K_{t-1}} K_{i,t-1} P_t + W_{i,t} + Z_{i,t} + R_{i,t} \quad i = 1, \dots, 4$$

[†]This should be modified, as it appears that governmental revenues are derived from a monopolistic sector and are more institutionally inflexible than the others.

Equation III and the relation based on equations (3 & 15) to link personal income with disposable income imply that transfers and payments to the administrative factor are also subject to income tax. Where the poor pay no income tax and the rich obtain little welfare payments the approximation is reasonable. The term $(1 - \beta_9)$ represents profits tax paid before entrepreneurial income is obtained.

Summing over $i = 1, \dots, 4$ to obtain C_t using III, 6, and 3&15 we may write II as:

$$\begin{aligned}
 \text{(IV)} \quad P_t Y_t^0 &= I_t + G_t^2 + G_t^3 + (X_t^1 - M_t^1) + \sum_{i=1}^4 \alpha_{i,1} N_{i,t} \\
 &+ \sum_{i=1}^4 \alpha_{i,2} (1 - \alpha_{i,3}) \left[W_{i,t} + Z_{i,t} + R_{i,t} \right] \\
 &+ x(1 - \beta_9) \sum_{i=1}^4 \alpha_{i,2} (1 - \alpha_{i,3}) \alpha_{i,21} \frac{\partial Y_t^0}{\partial K_{t-1}} K_{i,t-1} P_t
 \end{aligned}$$

which is of the form

$$\text{(V)} \quad P_t Y_t^0 = A_1 + A_2 x P_t$$

In equation I we know that $T_t^1 = \beta_7 Y_t^0 P_t + T_t^{1,2}$. Hence

we may rewrite it as:

$$\text{(VI)} \quad P_t \left[(1 - \beta_7) Y_t^0 - A_3 x \right] = A_4$$

Solving (V) and (VI) we obtain:

$$x = \frac{\{A_4 - A_1 (1 - \beta_7)\} Y_t^0}{\{A_2 A_4 - A_1 A_3\}}$$

$$P_t = \frac{\{A_1 A_3 - A_2 A_4\}}{Y_t^0 \{A_3 - (1 - \beta_7) A_2\}}$$

where:

$$A_1 = I_t + G_{2,t} + G_{3,t} + (X_t^1 - M_t^1) + \sum_{i=1}^4 \alpha_{i,1} N_{i,t} + \sum_{i=1}^4 \alpha_{i,2} (1 - \alpha_{i,3}) [W_{i,t} + Z_{i,t} + R_{i,t}]$$

$$A_2 = \sum_{i=1}^4 \alpha_{i,2} (1 - \beta_9) (1 - \alpha_{i,3}) \alpha_{i,21} \frac{\partial Y_t^0}{\partial K_{t-1}} K_{i,t-1}$$

$$A_3 = \sum_{i=1}^6 \alpha_{i,21} \frac{\partial Y_t^0}{\partial K_{t-1}} K_{i,t-1}$$

$$A_4 = \sum_{i=1}^4 W_{i,t} + \sum_{i=1}^2 Z_{i,t} + T_t^{1,2}$$

The mechanisms of monetary flows, banking regulations and price adjustment are probably among the more important features needing explicit description in an adequate development model. At this level of model construction only the barest formal consideration has been given to a rudimentary price adjustment mechanism.

5. International Capital Flows

Economic relations between a country and the rest of the world may be viewed in the context of imports and exports of goods and services, and imports and exports of capital. Imports and exports of goods and services have been discussed above; however, international capital movements have received little attention. These flows are a barometer reflecting basic conditions and problems within the country. Thus, an adverse trade balance will show up here and perhaps give an indication of whether devaluation, stricter exchange control or other such measures are needed. A developing social condition inimical to the wealthier segment of the population may cause substantial short term capital movements out of the country which aggravate any balance of payments problems which might previously have existed.

The country's central bank, development banks, the World Bank, I.I.F. and other international monetary agencies together with the ministerio de hacienda form the dominant complex of institutions influencing capital flows. In any direct application of simulation for planning purposes, along with the internal price adjustment mechanism, they merit a more explicit treatment than is given here.

5.1 Capital Imports

Capital inflows may be under any of three categories: transfers, long term flows and short term flows. The distinction between a transfer and another long term inflow is that no indebtedness or

servicing is incurred on the former; they are essentially international gifts or accounting settlements.

A policy such as that of AID contains an intermix of transfer and other long term capital inflow where loans (even though they may be on very favorable terms) are dominant.

$M_t^{2,1}$ = Repatriated earnings to the country

$M_t^{2,2}$ = Long term net inflows (excluding transfers)

$M_t^{2,3}$ = International transfers

$M_t^{2,4}$ = Net purchase of domestic currency by foreigners

$GM_t^{2,2}$ = Long term governmental inflow

$PM_t^{2,2}$ = Long term private inflow

$$(58) \quad M_t^{2,2} = GM_t^{2,2} + PM_t^{2,2}$$

$L_t^{2,1}$ = the country's holdings of foreign cash

$L_t^{2,2}$ = the country's holdings of foreign long term assets

$FEXCH_t$ = foreign exchange rate

$$(59) \quad M_t^{2,1} = \left[\beta_{20} L_t^{2,2} + \beta_{21} L_t^{2,1} \right] \left(FEXCH_t \right)$$

$M_t^{2,1}$ which is earnings repatriated to the country measured

in current domestic currency is given by the return β_{21} on domestic

holdings of monetary assets and β_{20} on foreign long term assets as is shown in (59).

(60) $M_t^{2,3}$ is assumed to be policy determined hence exogenous.

(61) $GM_t^{2,2}$ is assumed to be policy determined, exogenously.

In order to appreciate the effect of financial flows it would be desirable to give at least a disaggregation of the financial sector into the central bank, private banks, and development banks as is done in the I.M.F. International Financial Statistics. The importance of this information comes in any attempt to measure time lags in financial plans and to evaluate the degree of control exercised by intermediary institutions. This is immediately highlighted in examining how transfers from foreign governments and long term capital inflows enter the economy.

Equations (60) and (61) indicate that an exogenous policy is supplied to determine the values of $M_t^{2,3}$ and $GM_t^{2,2}$. The funds can be expected to find their way into the economy under governmental control via the central and development banks influencing primarily governmental and private investment by foreigners and the commercial white group.

(62) $FM_t^{2,2} = \beta_{36} GM_t^{2,2}$.

Equation (62) gives private long term capital inflow from abroad as highly correlated with governmental inflows from foreign national or international agencies.

$$(63) \quad M_t^{2,4} = \beta_{22} \left[X_t^1 - X_{t-1}^1 \frac{P_t}{P_{t-1}} \right]$$

Equation (63) gives net purchases of domestic currency by foreigners as an adjustment mechanism which keeps foreign stocks equal to $\beta_{22} X_t^1$. This is the necessary transactions level for international trade.

5.2 Capital Exports

On the assumption that no transfer payments are made by the country to abroad, except debt service charges, capital exports consist of long and short term movements. Short term outflows are of three types, one of which is related to the transactions needs of the country and two of which are categories of flight capital:

- $X_t^{2,1}$ = repatriated earnings from the country in domestic currency
- $X_t^{2,2}$ = long term capital exports
- $X_t^{2,3}$ = flight capital sent by foreign investors in current currency
- $X_t^{2,4}$ = flight capital sent by citizens of the country in current currency
- $X_t^{2,5}$ = transfers
- $X_t^{2,6}$ = balance of payments surplus in current currency

Equation (64) indicates that as a first approximation a percentage β_{35} of after-taxes profits to foreign owners leaves the country.

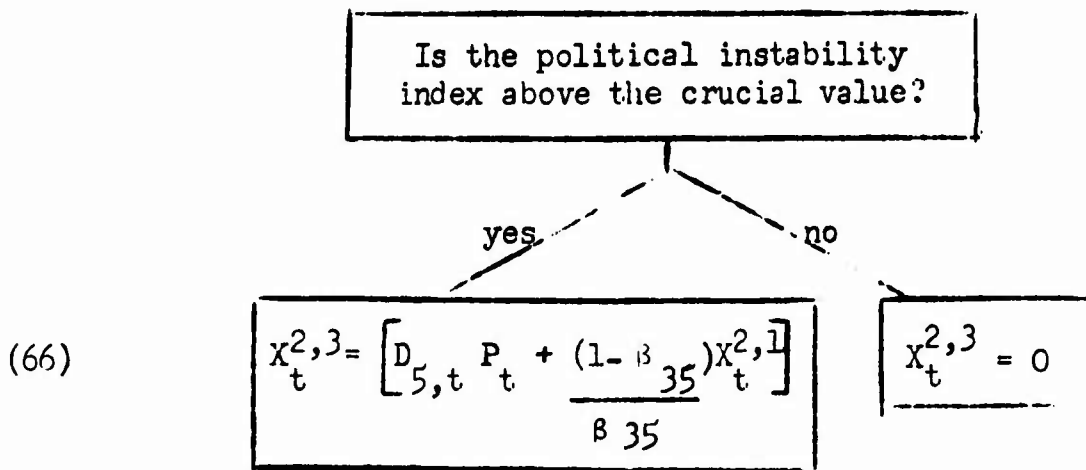
$$(64) \quad x_t^{2,1} = \beta_{35} (\pi_{5,t} - T_{5,t}^2)$$

$$(65) \quad x_t^{2,2} = \beta_{24} + \beta_{25} (\pi_{1,t} - T_{1,t}^2) + \beta_{26} (Z_{1,t} + Z_{2,t})$$

As a first approximation it is assumed that long term capital exports are a linear function of the profits earned by the commercial whites and the earnings of the agricultural whites in the institutional-administrative overhead category.

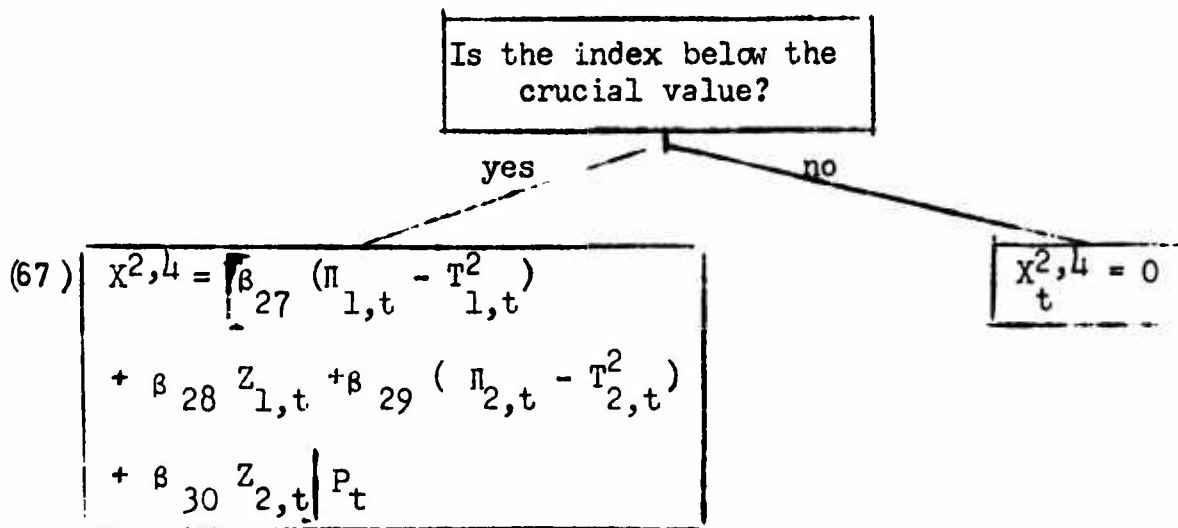
To some extent the concept of flight capital has metaphysical overtones, where there is no clear way of determining intent from behavior. In general, however, in many countries there are restrictions on the export of capital which are often evaded, especially by the commercial classes. It is probably of considerable economic interest to measure black market exchange rates and illegal capital flow in order to form any reasonably accurate picture of the confidence and behavior of the commercial and industrial sector of a country.

The diagram below describes the level of $x_t^{2,3}$, flight capital sent abroad by foreign nationals:



If political unrest is too great, depreciation charges are sent abroad, as well as remaining after tax profits. This implicitly assumes that there is no governmental blocking of the foreign repatriation. Often this is not the case. In any modification to reflect politico-economic features these conditions need to be investigated together with methods for calculating a stability index.

A similar scheme is utilized for $x_t^{2,4}$:



Transfer payments out of the country amount to paying the charges on debt held by foreigners (repayment of this debt can be regarded as a transfer of long-term capital flow depending upon the classification scheme.)

$$(68) \quad X_t^{2,5} = \beta_{37} L_t^{1,2}$$

The repayment schedule is a matter of bank policy and the age composition of long-term debt. Equation (68) indicates that the first component is a percentage of debt outstanding, while the second component (debt retirement) is treated exogenously.

$$(69) \quad X_t^{2,6} = X_t^1 P_t + \sum_{i=1}^4 M_t^{2,i} - P_t M_t^1 - \sum_{i=1}^5 X_t^{2,i}$$

Equation (69) is an accounting identity which gives short term outflows as a residual which just balances the international accounts for the country. With pegged exchange rates the size of this residual is an index of the pressure on the currency. In a more complete model its effect on imports would be made explicit.

6. The Monetary System

Consistent with our practice in most other aspects of this model, the monetary system is included in a highly aggregated and rough way. Most of the fundamental relationships and accounting identities appear; however, some are omitted. For example, we have

not yet modeled the details of borrowing and lending, nor the credit expansion possibilities in the banking system. Furthermore, no considerations are given to changes in velocity.

In several preceding sections the functional relationships involving the price level and international monetary transactions have been stated and explained. We must now give several accounting identities and balance equations.

$L_t^{1,1}$ = foreign holdings of domestic cash

$L_t^{1,2}$ = " " " " long term assets

$FEXCH_t$ = the price of foreign exchange in terms of domestic currency

$L_t^{2,1}$ = national holdings of foreign exchange in current domestic currency

$L_t^{2,2}$ = national holdings of foreign long term assets in current domestic currency

L_t = total domestic nominal money supply

$$(70) \quad \dot{L}_t^{1,1} = L_{t-1}^{1,1} + \dot{L}_t^{2,1}$$

$$(71) \quad \dot{L}_t^{1,2} = L_{t-1}^{1,2} + \dot{L}_t^{2,2}$$

$$(72) \quad \dot{L}_t^{2,1} = \frac{FEXCH_t}{FEXCH_{t-1}} L_{t-1}^{2,1} - X_{t-1}^{2,1} - X_{t-1}^{2,4} - X_{t-1}^{2,5} \\ + M_{t-1}^{2,1} + M_{t-1}^{2,3}$$

$$(73) \quad L_t^{2,2} = \frac{\text{FEXCH}_t}{\text{FEXCH}_{t-1}} L_{t-1}^{2,2} + X_{t-1}^{2,2}$$

The first two equations above are nearly self explanatory. Foreign holdings of our money today equal yesterday's holdings plus the change during the intervening time. Similarly for $L_t^{1,2}$.

The next equation requires more explanation. The value of yesterday's foreign exchange holdings in terms of the foreign currency is

$$\frac{L_{t-1}^{2,1}}{\text{FEXCH}_{t-1}} \quad \text{and the value of those holdings in terms of local currency today is } \frac{\text{FEXCH}_t}{\text{FEXCH}_{t-1}} L_{t-1}^{2,1} . \quad \text{Similarly for the last equation.}$$

For the economy as a whole the current money supply equals the previous plus the government deficit and factor incomes from abroad minus foreign transfers, foreign purchases of domestic currency, trade surplus (net increase in foreign exchange holdings) and factor incomes paid to foreigners.

$$(74) \quad L_t = L_{t-1} + G_t + R_t - T_t - \Pi_{6,t} - D_{6,t} + M_t^{2,3} + M_t^{2,4} + M_t^{2,1} - X_t^{2,1} + X_t^{2,6}$$

7. Concluding Comments

The previous sections have outlined a general aggregate model in which several features not usually common to macroeconomic models have been included. The following paper, Part III, is devoted to specializing the model to reflect the basic features of Ecuador, and then experimenting with simulations based on the specialized model.

There remain several further general comments before we turn to the operation of the model. They concern the relationship between this model, economic, political and social theory, and simulation as a form of economic history.⁴ Two other topics noted are the technical details of this model as a simulation, and the relationship between data processing and the input-output scheme adopted.

7.1. Description of the Simulation

The model constructed above is primarily macroeconomic with a four social sector disaggregation. Except for several logical switches which enable the program to execute policy or other decision changes the system is composed of a series of interlinked difference equations.

In general, difference equation models of economic processes are purely sequential; however, in this instance some of the relationships are simultaneous. This has made it necessary to solve a small simultaneous linear equation system in order to determine the price level.

Random variables do not play an important explicit conceptual role in the model; although they can be directly introduced in the input so that parameters, instead of being regarded as fixed, may be given variable values and outputs can be obtained in the form of average values together with standard deviations. This use of randomness aids in the exploration of the sensitivity of the system. Error terms may be added with ease to any equation. As is the case with all simulations, optimization is implicit rather than explicit.

The simulation here is a "representative unit," "fixed clock" model. This means it is so highly aggregated that any sector such as "the mestizos" is represented by a solitary behavior equation rather than a sample of behavioral units (as in the simulation of Orcutt⁵). The fixed clock feature of the model implies that all activities are updated at regular time intervals. There are no distributed lags to smooth the behavior of the behavioral units.

Among the natural extensions of this model would be to disaggregate production into at least agricultural and some industrial sectors. In some cases input-output matrices exist for the economy, thereby offering an available basis for disaggregation.

The current model contains approximately 120 equations, of which 30 are accounting; 80 are behavioral; and 10 are planning or policy relations which are for the most part treated as exogenous. Further interdisciplinary work might result in the specification of explicit relationships for variables currently left to be endogenous.

7.2 Simulation, Theory and Economic History

What is different in this approach from an input-output model? Is it not more confusing, arbitrary and ad hoc than a simple mathematically expressed and analyzed model? Does it not confuse economic, social, and other variables? What does it prove? How can one validate this type of model? Is it not of less value than a good verbal description?

The above questions are all relevant to work of this type and must be considered seriously.

The prime thesis behind this application of simulation is that it is a natural complementary approach to the currently more accepted methods in economic theory, econometrics, institutional studies, national income accounting, data processing, and planning. It has considerable potential as an integrative device. Its role in a data system is discussed in 7.3. Here the other aspects of the use of this approach are considered.

No technique or methodology can be of use itself when applied by those without a substantive knowledge and an understanding of basic theory. Hence "simulation" is no more an answer to the problems of the behavioral sciences than is "calculus." However, given a sufficient background, simulation offers a cheap and flexible method to augment the exploration of mathematical models of production growth and income. Sociological, political, and other hypotheses are often suggested. Before a heavy investment is made in research, theory, development, and

empirical work, it appears to be desirable to be able to obtain insights and estimations of the possible effects of various "guesstimates" on the structure of the environment.

A preliminary sensitivity analysis may be of considerable use in guiding the direction of deeper research. The model described here is offered in this spirit. It would be foolish to accept it, as it stands, as sufficiently detailed and trustworthy for detailed planning purposes.

By the judicious selection of parameter values at 0 or 1 many standard economic models can be obtained. If we believe in the Cobb-Douglas production function and competitive markets, limiting the allocation of product only to labor and capital according to marginal productivity, this can be conformed with in this model by cutting out the leakages to the institutional factor. If, however, we wish to check the effects of the conjecture that there are drains in administration we are in a position to do so.

Difference equation and other time dependent economic models are conjectural economic histories which up to some degree (not easy to define) may have some econometric validation. In general it appears that were it not for human inability to analyse the system, many socio-economic phenomena call for mathematical models in the form of non-linear simultaneous stochastic systems with distributed time lags and with logical switches and discontinuous functional forms.

We do not often construct models of the complexity noted above, because they appear to be so intractable both from the viewpoint of analysis and statistical validation. This leaves us, for the most part, with a theory for and statistical approach to simple mathematical models on the one hand and verbal description on the other. The type of model suggested here offers a third alternative. We are able to generate time series from structures of considerable complexity but may not have at this time adequate procedures for statistical validation; nevertheless, they provide a means for experimentation and "sweetening the intuition." Having experimented with alternative models and parameter values, the simulation may serve to aid in the selection of simpler models of greater realism and relevance than might otherwise have been constructed.

7.3 Output Display, Input Format and Data Banks

Data processing and data gathering are expensive occupations; but both are subject to vast external economies. It is my contention that more often than not the availability of data follows either theory or recognized need or both. The more a model constructed for the purposes of theory or planning is compatible with an ongoing data-gathering system, the greater are the economies in the obtaining of information, in influencing data-gathering procedures, and in communicating with others working on allied problems.

In Part III both the input format and output display associated with this model are discussed in detail. It must be restressed at this point that the output display is directly related to and cross-referenced with the economic data reporting system for AID devised at the Economic Growth Center at Yale. The selection of this output format was so that the simulation would be intimately related to a data processing system and a data bank and would have an output in a format that makes it easily available to and understandable by many.

The construction and use of large scale socio-economic models call for coordinated work by individuals with considerably varied training and skills. The costs of communication and coordination of effort are high. This approach is directed at least partially towards lessening them.

FOOTNOTES

1. Country Analysis Program of the Yale Economic Growth Center, Yale University, New Haven, Conn.
2. International Monetary Fund, International Financial Statistics, Washington, D. C.
3. See for example: R. W. Gillespie in E. P. Holland with R.W. Gillespie, Experiments on a Simulated Underdeveloped Economy: Development Plans and Balance-of-Payments Policies, Part II, M.I.T. Press, 1963.
4. Nerlove, Marc, "Two Models of the British Economy: A Fragment of a Critical Survey," pages 127-128 in International Economic Review, 6,2, 1965.
5. Orcutt, G. H., M. Greenberger, J. Korbel, and A. H. Rivlin, Microanalysis of Socioeconomic Systems - A Simulation Study, New York: Harpers, 1961.