

AD-660008

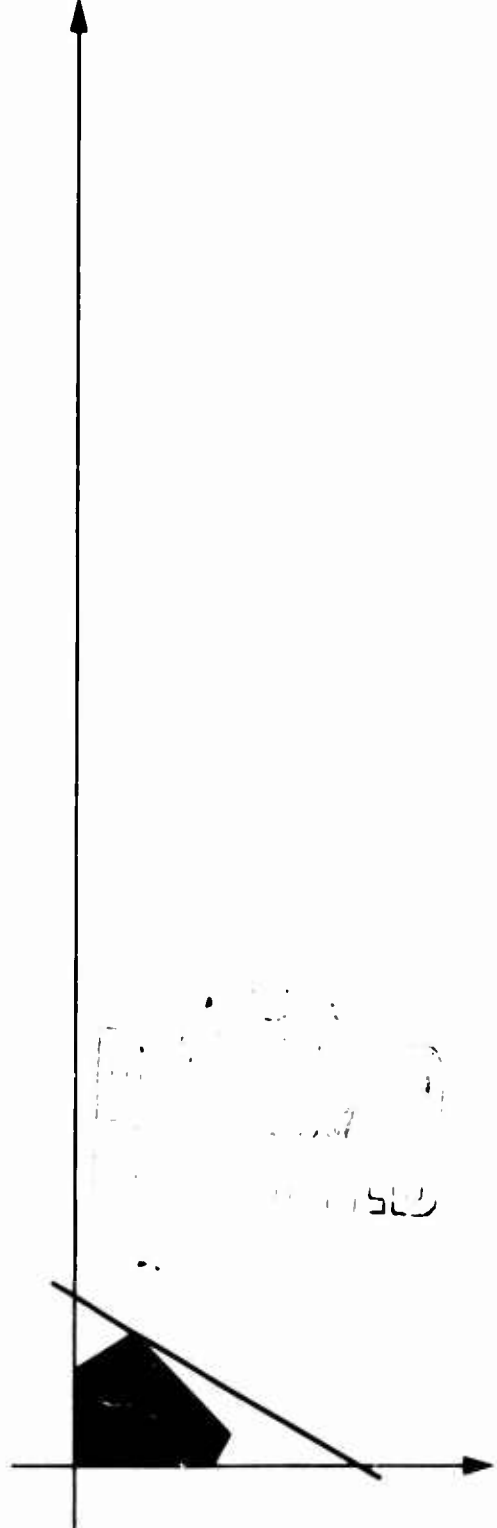
ORC 67-33
SEPTEMBER 1967

MULTICOMMODITY STEADY STATE
INVENTORY MODEL SUBJECT TO
LINEAR RESTRICTIONS

by
Enrique Hueda

OPERATIONS RESEARCH CENTER

COLLEGE OF ENGINEERING



This document is a copy of the original document and is not to be used for any other purpose.

UNIVERSITY OF CALIFORNIA - BERKELEY

36

MULTICOMMODITY STEADY STATE INVENTORY
MODEL SUBJECT TO LINEAR RESTRICTIONS

by

Enrique Hueda
Operations Research Center
University of California, Berkeley

September 1967

ORC 67-33

This research was supported by the Office of Naval Research under Contract Nonr-222(83) with the University of California. Reproduction in whole or part is permitted for any purpose of the United States Government.

ABSTRACT

This paper is concerned with (i) the maximization of net return $\sum_{j=1}^n \pi_j(y_j, t_j)$ and, (ii) the maximization of average net return $\sum_{j=1}^n \pi_j(y_j, t) / t$ of a deterministic multicommodity system subject to linear restrictions on the inventory levels y_j and the review periods t_j ($j=1, \dots, n$). The first problem is a symmetric quadratic program. For the second problem, an algorithm is given for finding the optimal solution.

ACKNOWLEDGEMENT

I would like to express my gratitude to Professor R. W. Shephard for his guidance and advice throughout this work. Furthermore, I would like to thank Professors E. W. Barankin, G. B. Dantzig, and R. M. Oliver without whose help my studies at this University would not have been possible.

I. INTRODUCTION

1. In this paper is considered: the maximization of the net return $\sum \pi_j(y_j, t_j)$ and the average net return $\sum \pi_j(y_j, t)/t$ of a deterministic multicommodity system subject to linear restrictions on the inventory levels y_j and the review periods t_j .

2. It will be useful to give first, a short description of the deterministic multicommodity system whose the net return is $\pi(y, t)$. The characteristics of such a system are the following [7].

- (i) Demand is deterministic at a constant rate of R quantity units per time unit, $R > 0$.
- (ii) The replenishment rate is infinite.
- (iii) h = inventory holding cost, $h > 0$, dimension: $\frac{\$}{\text{Unit} \cdot \text{Unit-time}}$
- (iv) c = cost of production, dimension: $\frac{\$}{\text{Unit}}$
- (v) r = revenue, dimension: $\$$
- (vi) K = ordering cost, dimension: $\$$
- (vii) \bar{P} = penalty (shortage cost), dimension: $\frac{\$}{\text{Unit} \cdot \text{Unit-Short}}$
- (viii) P = penalty (good will lost), dimension: $\frac{\$}{\text{Unit-Short}}$
- (ix) y = inventory level, dimension: Unit.
- (x) t = review period time, dimension: Time
- (xi) $\pi(y, t)$ = net revenue, dimension: $\$$
- (xii) h, c, r, k, \bar{P} and P are nonnegative constants, whereas y and t are variables.

The value of the net return $\pi(y, t)$ is given by

$$(1) \quad \pi(y, t) = \begin{cases} F(y, t) & \text{if } y \leq 0 \\ G(y, t) & \text{if } 0 \leq y \leq Rt \\ H(y, t) & \text{if } y \geq Rt \end{cases}$$

where:

$$(2) \quad F(y,t) = (r-c)Rt - \left[K + \bar{p} \left(\frac{Rt}{2} - y \right) + pRt \right]$$

$$(3) \quad G(y,t) = (r-c)Rt - \left[K + \frac{h}{2R} y^2 + \frac{\bar{p}}{2R} (Rt-y)^2 + P(Rt-y) \right]$$

$$(4) \quad H(y,t) = (r-c)Rt - \left[K + h \left(y - \frac{R}{2} t \right) t \right]$$

From (2), (3) and (4) it can be observed that $\pi(y,t)$ has the following properties:

- (a) $\pi(y,t)$ is a continuous function of y (unrestricted) and $t \geq 0$.
- (b) $\frac{\partial \pi(y,t)}{\partial y}$ exists and is a continuous function except at the points $(0,t)$ and (Rt,t) .
- (c) $\frac{\partial \pi(y,t)}{\partial t}$ exists and is a continuous function except at the points (Rt,t) .
- (d) $\pi(y,t)$ is a concave function for all y and t such that $0 \leq y \leq Rt$.

Define the negative net return $N(y,t)$

$$(5) \quad N(y,t) = -\pi(y,t)$$

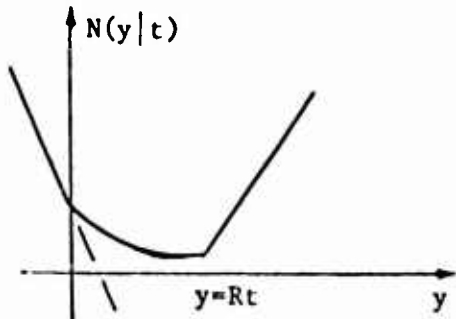
$$(6) \quad N(y|t) = N(y,t = \text{constant})$$

From (2), (3) and (4)

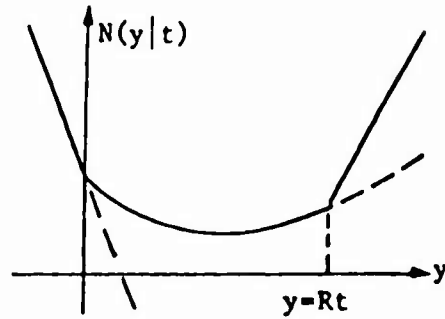
$$(7) \quad \frac{\partial N(y|t)}{\partial y} = \begin{cases} \bar{p}t & \text{if } y < 0 \\ \frac{h}{R} y - \frac{\bar{p}}{R} (Rt-y) - p & \text{if } 0 \leq y \leq Rt \\ ht & \text{if } y > Rt \end{cases}$$

$$\left. \frac{\partial N(y|t)}{\partial y} \right|_{y=Rt-} = ht-p$$

The graphical representation of $N(y|t)$ is given in Figure 1.



$(t < \frac{P}{h})$ Figure 1-a.



$(t \geq \frac{P}{h})$ Figure 1-b.

It is clear that the function $N(y|t)$ attains its minimum at a point y^* such that $y^* = Rt$ if $t < \frac{P}{h}$ or $0 \leq y^* < Rt$ if $t \geq \frac{P}{h}$.

Lost Sale Case

In the model discussed before it was assumed that all demands incurred when the system was out of stock were backordered. If demands occurring when the system is out of stock are lost forever, the value of the net return $\pi(y,t)$ will depend on the length of time for which the system is out of stock. In this case, since backorders are not allowed, the penalty due to shortage is null, whereas the penalty due to the good will lost is equal to $r-c$, i.e., $\bar{p} = 0$ and $p = r-c$ [9]; with these changes in the equation (1), the net revenue for the Lost Sale Case becomes

$$(8) \quad \pi(y,t) = \begin{cases} 0 & \text{if } y \leq 0 \\ (r-c)y - \left[K + \frac{h}{2R} y^2 \right] & \text{if } 0 \leq y \leq Rt \\ (r-c)Rt - \left[K + h \left(y - \frac{R}{2} t \right) t \right] & \text{if } y \geq Rt \end{cases}$$

II. RESTRICTIONS

1. Restrictions on the Inventory Levels

There can be many sorts of interactions between items when an inventory system stocks many items. For example, warehouse capacity may be limited, in which case the items compete for the floorspace; or there may be an upper limit to the maximum investment in inventory whence the items compete for investing dollars; or the total weight of items that the warehouse floor can tolerate may be limited; etc.

Consider the case where there is an upper limit b_1 to the square feet of warehouse floor space. Suppose that n items are being stocked and one unit of item j takes up b_{1j} square feet space, then if the floor space constraint is not to be violated at any time, it must be true that

$$(9) \quad b_{11} \delta(y_1, 0) + \dots + b_{1n} \delta(y_n, 0) = b_1, \text{ where}$$

$$\delta(y_j, 0) = \begin{cases} y_j & \text{if } y_j \geq 0 \\ 0 & \text{if } y_j < 0 \end{cases}.$$

It must be noted that in restrictions of this sort all coefficients b_{1j} ($j=1, \dots, n$) are nonnegative and $b_1 > 0$.

2. Restrictions on the Storage Period of the Commodities

Some commodities (e.g. perishable goods) cannot be stored any longer than a certain period of time T . Therefore in such a case must be, for those commodities $t_j \leq T$, where T is a positive constant.

If all replenishments are made up at the same time, then the restrictions are of the form $t_i = t_j$ for all $i, j=1, \dots, n$.

3. Restrictions Involving y_j and t_j ($j=1, \dots, n$).

In some models all demands must be met from inventory so that no back-orders or lost sales are allowed, in this case the restrictions are

$$y_j = R_j t_j \quad j=1, \dots, n; [7].$$

If the maximization of $\sum_{j=1}^n \pi_j(y_j, t_j)$ is only for one period, then all shortages are lost sales and the optimal solution must be such that

$y_j^* \leq R_j t_j^* \quad j=1, \dots, n$; that is, $y_j^* > R_j t_j^*$ must not be permitted since there is not a second period for selling the difference $y_j^* - R_j t_j^*$. Therefore, $y_j \leq R_j t_j$ must be a restriction for all index $j=1, \dots, n$.

III. MAXIMIZATION OF $\sum_{j=1}^n \pi_j(y_j, t_j)$.

It is clear that under any set of restrictions, the maximization of $\sum \pi_j(y_j, t_j)$ is equivalent to the minimization of $\sum N_j(y_j, t_j)$. Since the ordering cost $K_j (j=1, \dots, n)$ is a constant, without loss of generality it can be assumed that $K_j = 0 (j=1, \dots, n)$.

1. The Program Under Consideration Is Program A:

$$\begin{aligned}
 (10) \quad & \text{Minimize} \quad N(y, t) = \sum_{j=1}^n N_j(y_j, t_j) \\
 & \text{Subject to} \quad b_{11} \delta(y_1, 0) + \dots + b_{1n} \delta(y_n, 0) \leq b_1 \\
 & \quad \quad \quad \cdot \quad \quad \quad \cdot \\
 & \quad \quad \quad \cdot \quad \quad \quad \cdot \\
 & \quad \quad \quad b_{r1} \delta(y_1, 0) + \dots + b_{rn} \delta(y_n, 0) \leq b_r \\
 & \quad \quad \quad d_{11} t_1 \quad \quad + \dots + d_{1n} t_n \quad \quad \leq d_1 \\
 & \quad \quad \quad \cdot \quad \quad \quad \cdot \\
 & \quad \quad \quad \cdot \quad \quad \quad \cdot \\
 & \quad \quad \quad d_{s1} t_1 \quad \quad + \dots + d_{sn} t_n \quad \quad \leq d_s \\
 & \quad \quad \quad y_j \text{ unrestricted, } t_j \geq 0 (j=1, \dots, n) .
 \end{aligned}$$

It will be shown that the program A is equivalent to the following

Program A'

$$\begin{aligned}
 (11) \quad & \text{Minimize } N(y,t) = \sum_{j=1}^n N_j(y_j, t_j) \\
 & \text{Subject to } b_{11}y_1 + \dots + b_{1n}y_n \leq b_1 \\
 & \quad \quad \quad \cdot \quad \quad \quad \cdot \\
 & \quad \quad \quad \cdot \quad \quad \quad \cdot \\
 & \quad \quad \quad b_{r1}y_1 + \dots + b_{rn}y_n \leq b_r \\
 & \quad \quad \quad d_{11}t_1 + \dots + d_{1n}t_n \leq d_1 \\
 & \quad \quad \quad \cdot \quad \quad \quad \cdot \\
 & \quad \quad \quad \cdot \quad \quad \quad \cdot \\
 & \quad \quad \quad 0 \leq y_j \leq R_j t_j, \quad j=1, \dots, n.
 \end{aligned}$$

where

$$y = y(y_1, \dots, y_n)', \quad t = (t_1, \dots, t_n)', \quad (y,t) = (y_1, \dots, y_n; t_1, \dots, t_n)$$

all coefficients of y_j and t_j , and b_i and d_k are constants for all $j=1, \dots, n$; $i=1, \dots, r$; $k=1, \dots, s$. $\delta(y_j, 0)$ is defined by (9) and $b_{ij} \geq 0$, $b_i > 0$ for all $i=1, \dots, r$; $j=1, \dots, n$.

Theorem 1

The solution (y^*, t^*) is optimal for the program A if and only if it is optimal for the program A'.

Proof:

Define

$$N = \{1, \dots, n\}.$$

$$S = \{(y,t) \mid (y,t) \text{ satisfies (10)}\}.$$

$$S' = \{(y,t) \mid (y,t) \text{ satisfies (11)}\}.$$

Let (y^0, t^0) be a solution of (10), i.e., $(y^0, t^0) \in S$. Associated with (y^0, t^0) defined the sets:

$$N_1 = \{j | j \in N, y_j^0 < 0\} .$$

$$N_2 = \{j | j \in N, 0 \leq y_j^0 \leq R_j t_j^0\} .$$

$$N_3 = \{j | j \in N, y_j^0 > R_j t_j^0\} .$$

Let $(y', t^0) = (y_1', \dots, y_n'; t_1^0, \dots, t_n^0)'$ such that

$$y_j' = \begin{cases} 0 & \text{if } j \in N_1 \\ y_j & \text{if } j \in N_2 \\ R_j t_j^0 & \text{if } j \in N_3 \end{cases}$$

The vector (y', t^0) satisfies the restriction (11), because for all $i=1, \dots, r$; it is true that

$$b_{ij} y_j' = b_{ij} \delta(y_j^0, 0) = 0 \quad \text{if } j \in N_1$$

$$b_{ij} y_j' = b_{ij} y_j^0 \quad \text{if } j \in N_2$$

$$b_{ij} y_j' \leq b_{ij} y_j^0 \quad \text{if } j \in N_3$$

Furthermore, since $y_j' > y_j^0$ if $j \in N_1$, $y_j' = y_j^0$ if $j \in N_2$ and $y_j' < y_j^0$ if $j \in N_3$, a direct application of (7) gives:

$$N_j(y_j', t_j^0) \leq N_j(y_j^0, t_j^0) \quad \text{if } j \in N_1$$

$$N_j(y_j', t_j^0) = N_j(y_j^0, t_j^0) \quad \text{if } j \in N_2$$

$$N_j(y_j', t_j^0) < N_j(y_j^0, t_j^0) \quad \text{if } j \in N_3$$

That is, for each solution $(y^0, t^0) \in S$ there is a solution $(y', t^0) \in S'$ such that $N(y', t^0) \leq N(y^0, t^0)$. This implies:

$$(12) \quad \text{minimum}_{(y,t) \in S'} N(y,t) \leq \text{minimum}_{(y,t) \in S} N(y,t)$$

On the other hand

$S' \subset S$, implies:

$$(13) \quad \underset{(y,t) \in S'}{\text{minimum}} N(y,t) \geq \underset{S'}{\text{minimum}} N(y,t)$$

From (12) and (13), the Theorem follows.

Q.E.D.

In view of Theorem 1., it will be sufficient to consider the function $N(y,t)$ only on the region $0 \leq y_j \leq R_j t_j$, $j=1, \dots, n$.

Then, from (3) when $0 \leq y_j \leq R_j t_j$, $K_j = 0$

$$(14) \quad \begin{aligned} N(y,t) &= \sum_{j=1}^n N_j(y_j, t_j) \\ &= \sum_{j=1}^n \left[\frac{h_j}{2R_j} y_j^2 + \frac{\bar{P}_j}{2R_j} (R_j t_j - y_j)^2 \right] + \sum_{j=1}^n [(p_j + c_j - r_j) R_j t_j - P_j y_j] \end{aligned}$$

Using matrix notation, the first term on the right hand side can be written in the form

$$(15) \quad \sum_{j=1}^n \left[\frac{h_j}{2R_j} y_j^2 + \frac{\bar{P}_j}{2R_j} (R_j t_j - y_j)^2 \right] \equiv (y,t)' Q (y,t)$$

where

$(y,t) = (y_1, \dots, y_n; t_1, \dots, t_n)'$ and Q is the $2n \times 2n$ matrix

(i) S is a closed convex set, and (ii) when $P_j > 0$ for all $j=1, \dots, n$; the objective function $N(y,t)$ cannot be unbounded in the direction of extremization, since it is the sum of a positive definite quadratic form and a linear expression

3. There are many ways to obtain the optimal solution of program A' , a quadratic symmetric program. One method is the following: See [1].

Find $Z \geq 0$, such that

$$\begin{aligned}MZ + q &\geq 0 \quad \text{and} \\Z'(Mz + q) &= 0\end{aligned}$$

where

$$M = \begin{pmatrix} 2Q - A' \\ A \quad 0 \end{pmatrix}; \quad q = (g, b) \quad \text{and}$$

$Z = (x, \lambda)$. The components of the vector λ are the nonnegative multipliers associated with the inequalities of (16).

Example 1

A retail merchant in city A makes a weekly trip to city B in order to refill his supplies. The truck he uses, restricts the volume of the goods. Therefore the merchant must decide how much of each commodity he should take such that, (i) the truck restrictions are not violated, and, (ii) his total profit is maximized.

All shortages are lost sales and the set up cost is the cost of the trip. c_j is the buying price at city B; r_j , h_j and R_j are respectively the selling price, inventory holding cost and demand of items $j=1, \dots, n$; v_j and w_j are the volume and weight of item j . Finally V and W are the volume and weight capacities of the truck.

For instance, with $n=2$ and the following values:

Item	r_j	c_j	h_j	R_j	\bar{P}_j	P_j	v_j	w_j	K	V	W
1	5	3	0.4	20	0	2	6	3	100	2400	1500
2	3	2	0.5	50	0	1	4	5			

For reason of space all dimensions were dropped.

The unit time is 1 day,

" " volume is 1 cubic foot,

" " weight is 1 pound.

Then, the problem is

$$\text{Minimize } \left[\frac{1}{100} y_1^2 + \frac{1}{200} y_2^2 - 2y_1 - y_2 + 100 \right]$$

$$\text{Subject to } 3y_1 + 5y_2 \leq 1500$$

$$6y_1 + 4y_2 \leq 2400$$

$$y_1 \leq 20 \times 7$$

$$y_2 \leq 50 \times 7$$

The optimal solution is $y_1 = 100$, $y_2 = 100$.

IV. MAXIMIZATION OF $\sum_{j=1}^n \pi_j(y_j, t)/t$

The maximization of the average total net revenue per unit time when all replenishments are made up simultaneously and the inventory levels are subject to linear restrictions is considered in this section.

For convenience, one will minimize $\sum_{j=1}^n N_j(y_j, t)/t$ instead of maximizing $\sum_{j=1}^n \pi_j(y_j, t)/t$.

1. The Program Under Consideration Is Program B:

$$\text{Minimize } N(y, t)/t = \sum_{j=1}^n N_j(y_j, t)/t$$

$$\text{Subject to } b_{11} \delta(y_1, 0) + \dots + b_{1n} \delta(y_n, 0) \leq b_1$$

$$\begin{array}{c} \cdot \\ \cdot \\ \cdot \end{array}$$

$$b_{r1} \delta(y_1, 0) + \dots + b_{rn} \delta(y_n, 0) \leq b_r$$

$$y_j \text{ is unrestricted } j=1, \dots, n$$

$$t \geq 0.$$

where

$(y, t) = (y_1, \dots, y_n, t)'$ is an $(N+1)$ column vector and the restriction on the inventory levels y_j are the same as in program A'.

Consider also

Program B':

$$\begin{aligned} \text{Minimize} \quad & N(y,t)/t = \sum_{j=1}^n N_j(y_j,t)/t \\ \text{Subject to} \quad & b_{11}y_1 + \dots + b_{1n}y_n \leq b_1 \\ & \vdots \\ & \vdots \\ & b_{r1}y_1 + \dots + b_{rn}y_n \leq b_r \\ & 0 \leq y_j \leq R_j t; \quad j=1, \dots, n \\ & t \geq 0. \end{aligned}$$

Theorem 2

The solution (y^*, t^*) is optimal for the program B if and only if it is optimal of the program B'.

With $t_j = t$ ($j=1, \dots, n$) the proof of this theorem follows the same line as the one for Theorem 1.

Define

$$(19) \quad T = \{(y,t) \mid (y,t) \text{ satisfies (18)}\}.$$

Theorem 3

If $\frac{N(y^*, t^*)}{t^*} \leq 0$ and $N(y^+, t^+) < 0$ then $t^* \leq t^+$.

Where (y^*, t^*) is the optimal solution of program B' and $N(y^+, t^+) =$
 $= \text{minimum}_{(y,t) \in T} N(y,t).$

Proof:

If (y^*, t^*) is an optimal solution of program B', then

$$\frac{N(y^*, t^*)}{t^*} \leq \frac{N(y,t)}{t} \quad \text{for all point } (y,t) \in T,$$

in particular:

$$(20) \quad \frac{N(y^*, t^*)}{t^*} \leq \frac{N(y^+, t^+)}{t^+}, \text{ since } (y^+, t^+) \in T.$$

On the other hand,

$$N(y^+, t^+) \leq N(y, t) \text{ for all point } (y, t) \in T,$$

in particular:

$$(21) \quad N(y^+, t^+) \leq N(y^*, t^*), \text{ since } (y^*, t^*) \in T.$$

Using the hypothesis of the theorem in (20) and (21) one can get, respectively

$$(22) \quad \frac{N(y^*, t^*)}{N(y^+, t^+)} \geq \frac{t^*}{t^+} \text{ and } (23) \quad \frac{N(y^*, t^*)}{N(y^+, t^+)} \leq 1$$

From (22) and (23)

$$\frac{t^*}{t^+} \leq \frac{N(y^*, t^*)}{N(y^+, t^+)} \leq 1. \text{ Hence } t^* \leq t^+.$$

Q.E.D.

The economical meaning of this result is: if the optimal total net revenue for the one period analysis is positive and its optimal review period is t^+ , when the optimal average total net revenue per unit time is nonnegative, then t^+ is an upper bound for the optimal review period of the Steady State Case.

In view of Theorem 2., it will be sufficient to consider the function $N(y, t)/t$ only on the region $0 \leq y_j \leq R_j t$ ($j=1, \dots, n$).

From (3).

$$\begin{aligned} N(y, t)/t &= \sum_{j=1}^n \left[K_j + \frac{h_j}{2R_j} y_j^2 + \frac{\bar{P}_j}{2R_j} (R_j t - y_j)^2 + (P_j + c_j - r_j) R_j t - P_j y_j \right] / t \\ &= N'(y, t) + N''(t) \end{aligned}$$

where

$$(24) \quad N'(y, t) = \sum_{j=1}^n \left[\frac{h_j + \bar{p}_j}{2R_j t} y_j^2 - \left(\bar{p}_j + \frac{p_j}{t} \right) y_j \right]$$

$$(25) \quad N''(t) = \sum_{j=1}^n \left[\frac{K_j}{t} + \frac{R_j \bar{p}_j}{2} t + (p_j + r_j - c_j) R_j \right]$$

Define

$$(26) \quad T(t) = \{y \mid (y, t) \in T\} .$$

Note that $T(t)$ is the set of solutions y of (18) for a fixed value of t , and $T(t)$ is a compact set.

Then, an equivalent formulation of the program B' is

$$\begin{aligned} & \text{Minimize} \quad \frac{N(y, t)}{t} \\ & \text{Subject to} \quad (y, t) \in T . \end{aligned}$$

Observe that

$$\begin{aligned} (27) \quad \text{Minimum}_{(y, t) \in T} \frac{N(y, t)}{t} &= \\ &= \text{minimum}_{t \geq 0} \left(\text{minimum}_{y \in T(t)} \frac{N(y, t)}{t} \right) \\ &= \text{minimum}_{t \geq 0} \left(\text{minimum}_{y \in T(t)} (N'(y, t) + N''(t)) \right) \\ &= \text{minimum}_{t \geq 0} \left(N''(t) + \text{minimum}_{y \in T(t)} N'(y, t) \right) \end{aligned}$$

Define

$$(28) \quad H(t) = \text{minimum}_{y \in T(t)} \frac{N(y, t)}{t} = h(t) + N''(t)$$

$$(29) \quad h(t) = \text{minimum}_{y \in T(t)} N'(y, t)$$

Theorem 4

The program B' always has an optimal solution.

In order to prove Theorem 4., the following definitions and theorems are necessary.

Definition 1. Scalar function

A correspondence which assigns a single scalar (a real number, a point in R') to each point x of a set Γ is called a scalar function of x and is written as $\theta(x)$. The scalar function $\theta(x)$ is said to be defined on Γ .

Definition 2. Quasi-convex function

A scalar function $\theta(x)$ defined on a convex set $\Gamma \subset R^n$ is said to be quasi-convex on Γ if $\theta(\alpha x + (1-\alpha)y) \leq \max(\theta(x), \theta(y))$ for each pair of points $x, y \in \Gamma$ and all real $\alpha \geq 0$.

Definition 3. Strictly quasi-convex function

A scalar function $\theta(x)$ defined on a convex set $\Gamma \subset R^n$ is said to be strictly quasi-convex on Γ if for each pair of points $x, y \in \Gamma$ such that $\theta(x) \neq \theta(y)$, it is true that $\theta(\alpha x + (1-\alpha)y) < \max(\theta(x), \theta(y))$ for all real $\alpha > 0$.

Theorem 5

The program: minimize $N'(y, t)$ such that $y \in T(t)$, always has an optimal solution.

Proof:

Since $N'(y, t)$ is a continuous function and $T(t)$ is a compact set, $N'(y, t)$ has an absolute minimum on $T(t)$.

Theorem 6. [3]

The function

$$M(t) = \underset{y \in T(t)}{\text{minimum}} N(y,t), \text{ is convex}$$

Proof:

The function $N(y,t)$ is continuous and the set $T(t)$ is compact. Therefore for each number $t^0 \geq 0$ there is a point $y^0 \in T(t^0)$ such that $N(y^0, t^0)$ is an absolute minimum.

Let $t_1 \geq 0$ and $t_2 \geq 0$, with $t_1 \neq t_2$. Then there exists $y^1 \in T(t_1)$ and $y^2 \in T(t_2)$ such that

$$(30) \quad M(t_1) = \underset{y \in T(t_1)}{\text{minimum}} N(y, t_1) = N(y^1, t_1)$$

$$(31) \quad M(t_2) = \underset{y \in T(t_2)}{\text{minimum}} N(y, t_2) = N(y^2, t_2)$$

On the other hand the set of restrictions (19) are linear. Therefore, if $y^1 \in T(t_1)$ and $y^2 \in T(t_2)$ then $(\alpha y^1 + (1-\alpha)y^2) \in T(\alpha t_1 + (1-\alpha)t_2)$ for all real $\alpha \geq 0$.

Hence

$$\begin{aligned} M(\alpha t_1 + (1-\alpha)t_2) &= \underset{y \in T(\alpha t_1 + (1-\alpha)t_2)}{\text{minimum}} N(y, \alpha t_1 + (1-\alpha)t_2) \\ &\leq N(\alpha y^1 + (1-\alpha)y^2, \alpha t_1 + (1-\alpha)t_2) \end{aligned}$$

But the function $N(y,t)$ is convex, then

$$M(\alpha t_1 + (1-\alpha)t_2) \leq \alpha N(y^1, t_1) + (1-\alpha)N(y^2, t_2).$$

Using (30) and (31)

$$M(\alpha t_1 + (1-\alpha)t_2) \leq M(t_1) + (1-\alpha)M(t_2) .$$

That is, $M(t)$ is a convex function.

Q.E.D.

Corollary 1. [3]

The function $H(t) = \text{minimum}_{y \in T(t)} \frac{N(y,t)}{t}$ is quasi-convex and defined on $(0, +\infty)$.

Proof:

$$H(t) = \text{minimum}_{y \in T(t)} \frac{N(y,t)}{t} = \left(\text{minimum}_{y \in T(t)} N(y,t) \right) \frac{1}{t} = \frac{M(t)}{t}$$

Then, for all $\alpha \geq 0$, $t_1 > 0$, $t_2 > 0$,

$$H(\alpha t_1 + (1-\alpha)t_2) = \frac{M(\alpha t_1 + (1-\alpha)t_2)}{\alpha t_1 + (1-\alpha)t_2} .$$

Since $M(t)$ is convex,

$$H(\alpha t_1 + (1-\alpha)t_2) \leq \frac{\alpha M(t_1) + (1-\alpha)M(t_2)}{\alpha t_1 + (1-\alpha)t_2} .$$

Observe that if $x > 0$, $y > 0$ then

$$\left(\frac{b}{y} \leq \frac{a}{x} \right) \Leftrightarrow bx \leq ay \Leftrightarrow (a+b)x \leq a(x+y) \Leftrightarrow \frac{a+b}{x+y} \leq \frac{a}{x} .$$

$$\text{Suppose } H(t_1) = \frac{M(t_1)}{t_1} \geq \frac{M(t_2)}{t_2} .$$

With the substitutions $a = \alpha M(t_1)$, $x = \alpha t_1$, etc. The conclusion is:

$$H(\alpha t_1 + (1-\alpha)t_2) \leq H(t_1) = \max(H(t_1), H(t_2)),$$

i.e. the function $H(t)$ is quasi-convex.

Q.E.D.

Remark:

Since the function $M(t)$ is defined and convex on $[0, +\infty)$ it is continuous for all $t \in (0, +\infty)$. The function $H(t) = \frac{M(t)}{t}$ is defined for all $t > 0$ and it is the ratio of two continuous functions, hence, $H(t)$ is continuous function for all $t > 0$.

Proof of Theorem 4

For definition (28)

$$H(t) = \text{minimum}_{y \in T(t)} \frac{N(y, t)}{t}$$

$$= \text{minimum}_{y_j} \frac{1}{t} \sum_{j=1}^n \left[K_j + \frac{h_j}{2R_j} y_j^2 + \frac{\bar{P}_j}{2R_j} (R_j t - y_j)^{P_j + c_j - r_j} R_j t - P_j y_j \right]$$

since $y_j \leq R_j t$ ($j=1, \dots, n$)

$$\lim_{t \rightarrow 0^+} H(t) = \begin{cases} \text{bounded if } \sum_{j=1}^n K_j = 0 \\ +\infty & \text{if } \sum_{j=1}^n K_j > 0. \end{cases}$$

In the first case define $H(0) = \lim_{t \rightarrow 0^+} H(t)$.

Then the function $H(t)$ is continuous for all $t \geq 0$. In Theorem 3, it was shown that the optimal review period t^* of program B' is bounded by t^+ . Hence, since $H(t)$ is continuous on the compact set $[0, t^+]$, the theorem follows immediately.

If $H(t) \rightarrow +\infty$, one can find a number $\xi > 0$ such that $H(t) > H(t^+)$ for $t < \xi$. But $H(t)$ is continuous on the compact set $[\xi, t^+]$. Hence $H(t)$ has an absolute minimum on $[\xi, t^+]$.

Q.E.D.

In order to find the optimal solution of program B' an algorithm is given.

The algorithm is based mainly on the following:

(i) For each $t > 0$, the program

$$\begin{aligned} & \text{Minimize } N'(y,t) \\ & \text{Subject to } y \in T(t) \end{aligned}$$

always has an optimal solution.

(ii) $H(t)$ is a continuous (strictly) quasi-convex function of t .

3. Algorithm

Step 0

- (a) Find the upper bound t^+
 (b) Let $S_0 = \{0, t^+\}$

Step 1

Find t_1 such that $H(t_1) = \min_{t \in S_1} H(t)$

Step 2

- (a) Find t' and t'' such that

$$t' = \min_{t \in S_1} [(t_1 - t) > 0]$$

$$t'' = \begin{cases} \min_{t \in S_1} [(t - t_1) > 0] & \text{if } t_1 < t^+ \\ t^+ & \text{if } t_1 = t^+ \end{cases}$$

- (b) Let $t'_1 = \frac{1}{2} (t' + t_1)$ and $t''_1 = \frac{1}{2} (t'' + t_1)$

Step 3

Calculate $H(t'_1)$ and $H(t''_1)$

Step 4

Let $S_{i+1} = S_i \cup \{t'_i, t''_i\}$

and return to Step 1, with $i+1$ replacing i .

In Step 0, the upper bound t^+ is found by solving the program (minimize $N(y,t)$ subject to $(y,t) \in T$), see Theorem 3.

In Step 3, the values of $H(t'_i)$ and $H(t''_i)$ are found in accordance with the formulas (28) and (29).

It must be noted that at each iteration it is necessary to solve the following programs

$$\begin{array}{ll} \text{Minimize } N'(y, t'_i) & \text{and Minimize } N'(y, t''_i) \\ \text{Subject to } y \in T(t'_i) & \text{Subject to } y \in T(t''_i) . \end{array}$$

Define

$$H(0) = \lim_{t \rightarrow 0^+} H(t), \text{ and}$$

$$H(t^*) = \min_{t \in [0, t^+]} H(t)$$

Theorem 7

At the K^{th} ($K=1, 2, \dots$) iteration it is true that

$$(a) \quad t_K - t' = \frac{t^+}{2^K} \quad \text{and} \quad t'' - t_K = \begin{cases} \frac{t^+}{2^K} & \text{if } t_K < t^+ \\ 0 & \text{if } t_K = t^+ \end{cases}$$

$$(b) \quad |t^* - t_K| \leq \frac{t^+}{2^K} .$$

Proof:

By induction over K ,

(1) the theorem is clearly true for $K=1$

(ii) assume that it is true for $K=r$ and consider first, the case

$$t_r < t^+.$$

Then, at the r^{th} iteration

$$(32) \quad t_r - t' = \frac{t^+}{2^r}, \quad t'' - t_r = \frac{t^+}{2^r} \quad \text{and} \quad |t^0 - t_r| \leq \frac{t^+}{2^r},$$

where

$$(33) \quad t'_r = \frac{1}{2} (t' + t_r) \quad \text{and} \quad t''_r = \frac{1}{2} (t'' + t_r).$$

$$S_{r+1} = S_r \cup \{t'_r, t''_r\}.$$

At the $(r+1)^{\text{th}}$ iteration

Step 1

$$H(t_{r+1}) = \min H(t) = \min(H(t_r), H(t'_r), H(t''_r))$$

$$(34) \quad \text{Suppose that } t_{r+1} = t_r \text{ (i.e. } H(t_r) < H(t'_r), H(t''_r))$$

Step 2

$$(35) \quad t' = t'_r, \quad t'' = t''_r.$$

Then, from (32), (33), (34), and (35),

$$t_{r+1} - t' = t_r - t'_r = t_r - \frac{1}{2} (t' + t_r) = \frac{1}{2} (t_r - t') = \frac{1}{2} \cdot \frac{t^+}{2^r} = \frac{t^+}{2^{r+1}},$$

$$t'' - t_{r+1} = t''_r - t_r = \frac{1}{2} (t'' + t_r) - t_r = \frac{1}{2} (t'' - t_r) = \frac{1}{2} \cdot \frac{t^+}{2^r} = \frac{t^+}{2^{r+1}}.$$

Hence, the part (a) of the theorem is true for all $K=1, 2, \dots$

Also, $t^* \in [t'_r, t''_r]$, because if $t^* < t'_r$, then there exist $\lambda > 0$, such that $(\lambda t^* + (1-\lambda)t_r) = t'_r$ and $H(\lambda t^* + (1-\lambda)t_r) = H(t'_r)$.

But the quasi-convexity of $H(t)$ implies that $H(t'_r) = H(\lambda t^* + (1-\lambda)t_r) < \max(H(t^*), H(t_r)) = H(t_r)$, which contradicts the assumption (34). Hence, $t'_r \leq t^*$.

In a similar way the assumption $t''_r < t^*$ also leads to a contradiction. Hence $t^* \in [t'_r, t''_r]$. This result and the formulas (32) and (33) imply that

$$\begin{aligned} |t^* - t_{r+1}| &= |t^* - t_r| \leq |t'_r - t_r| = \left| \frac{1}{2} (t'_r + t_r) - t_r \right| = \\ &= \frac{1}{2} |t'_r - t_r| = \frac{1}{2} \cdot \frac{t^+}{2^r} = \frac{t^+}{2^{r+1}}. \end{aligned}$$

Hence, $|t^* - t_{r+1}| \leq \frac{t^+}{2^{r+1}}$. Then part (b) of the theorem is true for all positive integer $K=1, 2, \dots$

A similar analysis for the cases $t_{r+1} = t'_r$ or t''_r in (34), completes the proof with the assumption that $t_r < t^+$.

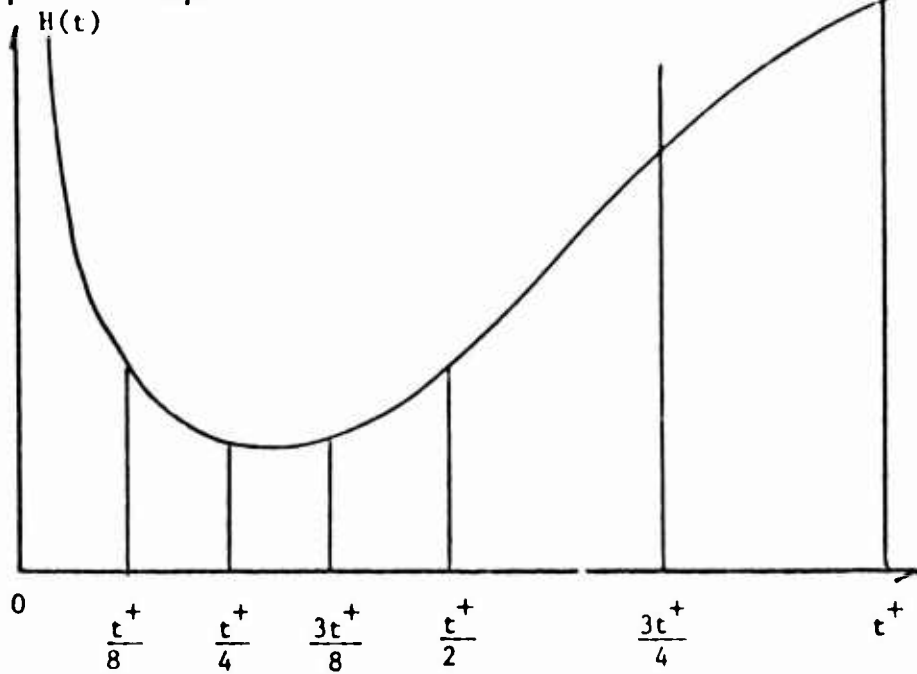
Following the same steps, the analysis of the case $t_r = t^+$, completes the proof.

Corollary 1

$$\lim_{K \rightarrow \infty} H(t_K) = H(t^*)$$

The corollary follows immediately from the facts: $H(t)$ is a continuous function and $\lim_{K \rightarrow \infty} t_K = t^*$.

Graphical example

Iteration 0

- (a) Find the upper bound t^+
 (b) $S_0 = \{0, t^+\}$

Step 1

$$H(t^+) = \min_{t \in S_0} H(t), \quad t_0 = t^+$$

Step 2

- (a) $t' = 0, t'' = t^+$
 (b) $t'_0 = \frac{t^+}{2}, t''_0 = t^+$

Step 3

Calculate $H\left(\frac{t^+}{2}\right)$ and $H(t^+)$

Step 4

$$S_1 = S_0 \cup \left\{ \frac{t^+}{2}, t^+ \right\} = \left\{ 0, \frac{t^+}{2}, t^+ \right\}, \text{ return to Step 1.}$$

Iteration 2Step 1

$$H(t_1) = \min_{t \in S_1} H(t) = H\left(\frac{t^+}{2}\right), t_1 = \frac{t^+}{2}$$

Step 2

$$(a) \quad t' = 0, t'' = t^+$$

$$(b) \quad t'_1 = \frac{1}{2} \left(0 + \frac{t^+}{2} \right) = \frac{t^+}{4}; \quad t''_1 = \frac{1}{2} \left(t^+ + \frac{t^+}{2} \right) = \frac{3}{4} t^+.$$

Step 3Calculate $H(t'_1)$ and $H(t''_1)$.Step 4

$$S_2 = S_1 \cup \{t'_1, t''_1\} = \left\{ 0, \frac{t^+}{4}, \frac{t^+}{2}, \frac{3t^+}{4}, t^+ \right\}, \text{ return to Step 1.}$$

Iteration #2Step 1

$$H(t_2) = \min_{t \in S_2} H(t) = H\left(\frac{t^+}{4}\right), t_2 = \frac{t^+}{4}$$

Step 2

$$(a) \quad t' = 0, t'' = t_1 = \frac{t^+}{2}$$

$$(b) \quad t'_2 = \frac{1}{2} (0 + t_2) = \frac{t^+}{8}, \quad t''_2 = \frac{1}{2} \left(\frac{t^+}{2} + \frac{t^+}{4} \right) = \frac{3t^+}{8}.$$

Step 3Calculate $H(t'_2)$ and $H(t''_2)$

Step 4

$$S_3 = S_2 \cup (t'_2, t''_2) = \left\{ 0, \frac{t^+}{8}, \frac{t^+}{4}, \frac{3t^+}{8}, \frac{t^+}{2}, \frac{3t^+}{4}, t^+ \right\}, \text{ return to Step 1.}$$

etc.

REFERENCES

- [1] Cottle, R. W., "Symmetric Dual Quadratic Programs," Operations Research Center, University of California, Berkeley.
- [2] Dantzig, G. B. and R. W. Cottle, "Positive (Semi-) Definite Matrices and Mathematical Programming," ORC 63-18, Operations Research Center, University of California, Berkeley.
- [3] Dinkelbach, W., "On an Algorithm for Nonlinear Fractional Programming," Industrie seminar der Universitat zu Koln.
- [4] Dorn, W. S., "Self-dual Quadratic Programs," Journal of the Society for Industrial and Applied Mathematics.
- [5] Gale, D., THE THEORY OF LINEAR ECONOMIC MODELS, McGraw-Hill.
- [6] Hadley, G. and T. M. Whitin, ANALYSIS OF INVENTORY SYSTEMS, Prentice Hall.
- [7] Naddor, E., INVENTORY SYSTEMS, John Wiley & Sons, Inc.
- [8] Rudin, W., PRINCIPLES OF MATHEMATICAL ANALYSIS, 2nd edition, McGraw-Hill Book Company, New York, (1964).
- [9] Shephard, R. W., "Notes from Course 264, Winter Quarter 1967," University of California, Berkeley.

Unclassified
Security Classification

DOCUMENT CONTROL DATA - R&D		
<i>(Security classification of title, body of abstract and indexing annotation must be entered when the overall report is classified)</i>		
1 ORIGINATING ACTIVITY (Corporate author)		2a REPORT SECURITY CLASSIFICATION
University of California, Berkeley		Unclassified
		2b GROUP
3 REPORT TITLE		
MULTICOMMODITY STEADY STATE INVENTORY MODEL SUBJECT TO LINEAR RESTRICTIONS		
4 DESCRIPTIVE NOTES (Type of report and inclusive dates)		
Research Report		
5 AUTHOR(S) (Last name, first name, initial)		
HUEDA, Enrique		
6 REPORT DATE	7a TOTAL NO OF PAGES	7b NO OF REFS
September 1967	29	9
8a CONTRACT OR GRANT NO	9a ORIGINATOR'S REPORT NUMBER(S)	
Nonr-222(83)	ORC 67-33	
b. PROJECT NO		
NR 047 033		
c	9b OTHER REPORT NO(S) (Any other numbers that may be assigned this report)	
Research Project No.: RR 003 07 01		
d		
10 AVAILABILITY/LIMITATION NOTICES		
DISTRIBUTION OF THIS DOCUMENT IS UNLIMITED.		
11 SUPPLEMENTARY NOTES		12 SPONSORING MILITARY ACTIVITY
		MATHEMATICAL SCIENCE DIVISION
13 ABSTRACT		
SEE ABSTRACT		

DD FORM 1473
1 JAN 64

Unclassified
Security Classification

14 KEY WORDS	LINK A		LINK B		LINK C	
	ROLE	WT	ROLE	WT	ROLE	WT
Inventory						
Multicommodity						
Linear Restrictions						

INSTRUCTIONS

1. **ORIGINATING ACTIVITY:** Enter the name and address of the contractor, subcontractor, grantee, Department of Defense activity or other organization (*corporate author*) issuing the report.

2a. **REPORT SECURITY CLASSIFICATION:** Enter the overall security classification of the report. Indicate whether "Restricted Data" is included. Marking is to be in accordance with appropriate security regulations.

2b. **GROUP:** Automatic downgrading is specified in DoD Directive S200.10 and Armed Forces Industrial Manual. Enter the group number. Also, when applicable, show that optional markings have been used for Group 3 and Group 4 as authorized.

3. **REPORT TITLE:** Enter the complete report title in all capital letters. Titles in all cases should be unclassified. If a meaningful title cannot be selected without classification, show title classification in all capitals in parenthesis immediately following the title.

4. **DESCRIPTIVE NOTES:** If appropriate, enter the type of report, e.g., interim, progress, summary, annual, or final. Give the inclusive dates when a specific reporting period is covered.

5. **AUTHOR(S):** Enter the name(s) of author(s) as shown on or in the report. Enter last name, first name, middle initial. If military, show rank and branch of service. The name of the principal author is an absolute minimum requirement.

6. **REPORT DATE:** Enter the date of the report as day, month, year, or month, year. If more than one date appears on the report, use date of publication.

7a. **TOTAL NUMBER OF PAGES:** The total page count should follow normal pagination procedures, i.e., enter the number of pages containing information.

7b. **NUMBER OF REFERENCES:** Enter the total number of references cited in the report.

8a. **CONTRACT OR GRANT NUMBER:** If appropriate, enter the applicable number of the contract or grant under which the report was written.

8b, 8c, & 8d. **PROJECT NUMBER:** Enter the appropriate military department identification, such as project number, subproject number, system numbers, task number, etc.

9a. **ORIGINATOR'S REPORT NUMBER(S):** Enter the official report number by which the document will be identified and controlled by the originating activity. This number must be unique to this report.

9b. **OTHER REPORT NUMBER(S):** If the report has been assigned any other report numbers (*either by the originator or by the sponsor*), also enter this number(s).

10. **AVAILABILITY/LIMITATION NOTICES:** Enter any limitations on further dissemination of the report, other than those

imposed by security classification, using standard statements such as:

- (1) "Qualified requesters may obtain copies of this report from DDC."
- (2) "Foreign announcement and dissemination of this report by DDC is not authorized."
- (3) "U. S. Government agencies may obtain copies of this report directly from DDC. Other qualified DDC users shall request through _____."
- (4) "U. S. military agencies may obtain copies of this report directly from DDC. Other qualified users shall request through _____."
- (5) "All distribution of this report is controlled. Qualified DDC users shall request through _____."

If the report has been furnished to the Office of Technical Services, Department of Commerce, for sale to the public, indicate this fact and enter the price, if known.

11. **SUPPLEMENTARY NOTES:** Use for additional explanatory notes.

12. **SPONSORING MILITARY ACTIVITY:** Enter the name of the departmental project office or laboratory sponsoring (*paying for*) the research and development. Include address.

13. **ABSTRACT:** Enter an abstract giving a brief and factual summary of the document indicative of the report, even though it may also appear elsewhere in the body of the technical report. If additional space is required, a continuation sheet shall be attached.

It is highly desirable that the abstract of classified reports be unclassified. Each paragraph of the abstract shall end with an indication of the military security classification of the information in the paragraph, represented as (TS), (S), (C), or (U).

There is no limitation on the length of the abstract. However, the suggested length is from 150 to 225 words.

14. **KEY WORDS:** Key words are technically meaningful terms or short phrases that characterize a report and may be used as index entries for cataloging the report. Key words must be selected so that no security classification is required. Identifiers, such as equipment model designation, trade name, military project code name, geographic location, may be used as key words but will be followed by an indication of technical context. The assignment of links, roles, and weights is optional.