

AD 663801

*Geophysical Data Report*

**ATMOSPHERIC RADIO NOISE DATA  
BANGKOK, THAILAND—March-May 1967**

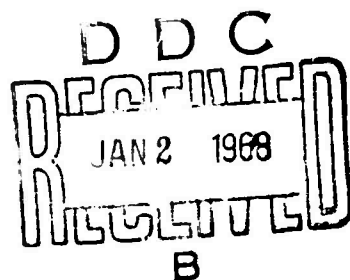
By: RANGSIT CHINDAHPORN    LT. CHAIKAMOL LUMJIAK  
PRAJUAB NIMITYONGSKUL

*Prepared for.*

U. S. ARMY ELECTRONICS COMMAND  
FORT MONMOUTH, NEW JERSEY 07703

CONTRACT DA-36-039 AMC-00040(E)  
ORDER NO. 5384-PM-63-91

Distribution of this document is unlimited.



*Sponsored by*  
ADVANCED RESEARCH PROJECTS AGENCY  
ARPA ORDER 371  
FOR THE  
THAI-U.S. MILITARY RESEARCH AND DEVELOPMENT CENTER  
SUPREME COMMAND HEADQUARTERS  
BANGKOK, THAILAND



STANFORD RESEARCH INSTITUTE  
MENLO PARK, CALIFORNIA

**BEST  
AVAILABLE COPY**

STANFORD RESEARCH INSTITUTE

MENLO PARK, CALIFORNIA



October 1967

*Geophysical Data Report*

**ATMOSPHERIC RADIO NOISE DATA  
BANGKOK, THAILAND—March-May 1967**

*Prepared for:*

U.S. ARMY ELECTRONICS COMMAND  
FORT MONMOUTH, NEW JERSEY 07703

CONTRACT DA-36-039 AMC-00040(E)  
ORDER NO 5384-PM-63-91

By: RANGSIT CHINDAHPORN    LT. CHAIKAMOL LUMJIAK    PRAJUAB NIMITYONGSKUL

*SRI Project 4240*

Distribution of this document is unlimited.

*Sponsored by*  
ADVANCED RESEARCH PROJECTS AGENCY  
ARPA ORDER 371  
FOR THE  
THAI-U.S. MILITARY RESEARCH AND DEVELOPMENT CENTER  
SUPREME COMMAND HEADQUARTERS  
BANGKOK, THAILAND

Copy No. .... 33

## CONTENTS

---

LIST OF ILLUSTRATIONS . . . . .	iii
LIST OF TABLES . . . . .	iii
I INTRODUCTION . . . . .	1
II DISCUSSION . . . . .	7
APPENDIX - RADIO NOISE VALUES . . . . .	9

## ILLUSTRATIONS

---

Fig. 1	ARN-3 Atmospheric Radio Noise Measuring Equipment . . . . .	2
Fig. 2	Location of the Radio Noise Recording Station at Laem Chabang, Thailand . . . . .	3
Fig. 3	Radio Noise Recording Station . . . . .	4
Fig. 4	Nomogram for Transforming Effective Antenna Noise Figure to Noise Field Strength as a Function of Frequency . . . . .	6
Fig. A-1	Three-Month Median Time-Block Values of Radio Noise Power . . . . .	14

## TABLES

---

Table I	Radio Noise Measuring Site at Laem Chabang, Thailand . . . . .	5
Table II	ARN-3 Radio Noise Recorder Specifications . . . . .	5
Table A-1	Month-Hour Values of Radio Noise . . . . .	10
Table A-2	Three-Month Time-Block Values of Radio Noise . . . . .	13

## I INTRODUCTION

Measurements of atmospheric radio noise are being made by the Electronics Laboratory of the Military Research and Development Center (MRDC-EL), a joint Thailand-United States-organization in Bangkok. The noise-measuring equipment (Fig. 1), modeled after the U.S. National Bureau of Standards Radio Noise Recorder, Model ARN-2, is located near the village of Laem Chabang (Fig. 2), about 90 kilometers southeast of Bangkok, in order to minimize interference from man-made noise. A view of the site, showing the standard ARN-2 antenna and ground plane, is presented in Fig. 3.

The cooperation and participation of the staff members of the Thailand Ministry of Defense and the support of the United States Advanced Research Projects Agency and the U.S. Army Electronics Command, have made it possible for the data presented in this report to be accumulated.

Tables I and II, below, present information about the site and the equipment *is given p. 7*

For convenience in applying the results in this study, a nomogram for transforming effective antenna noise figure to noise field strength as a function of frequency is presented in Fig. 4.

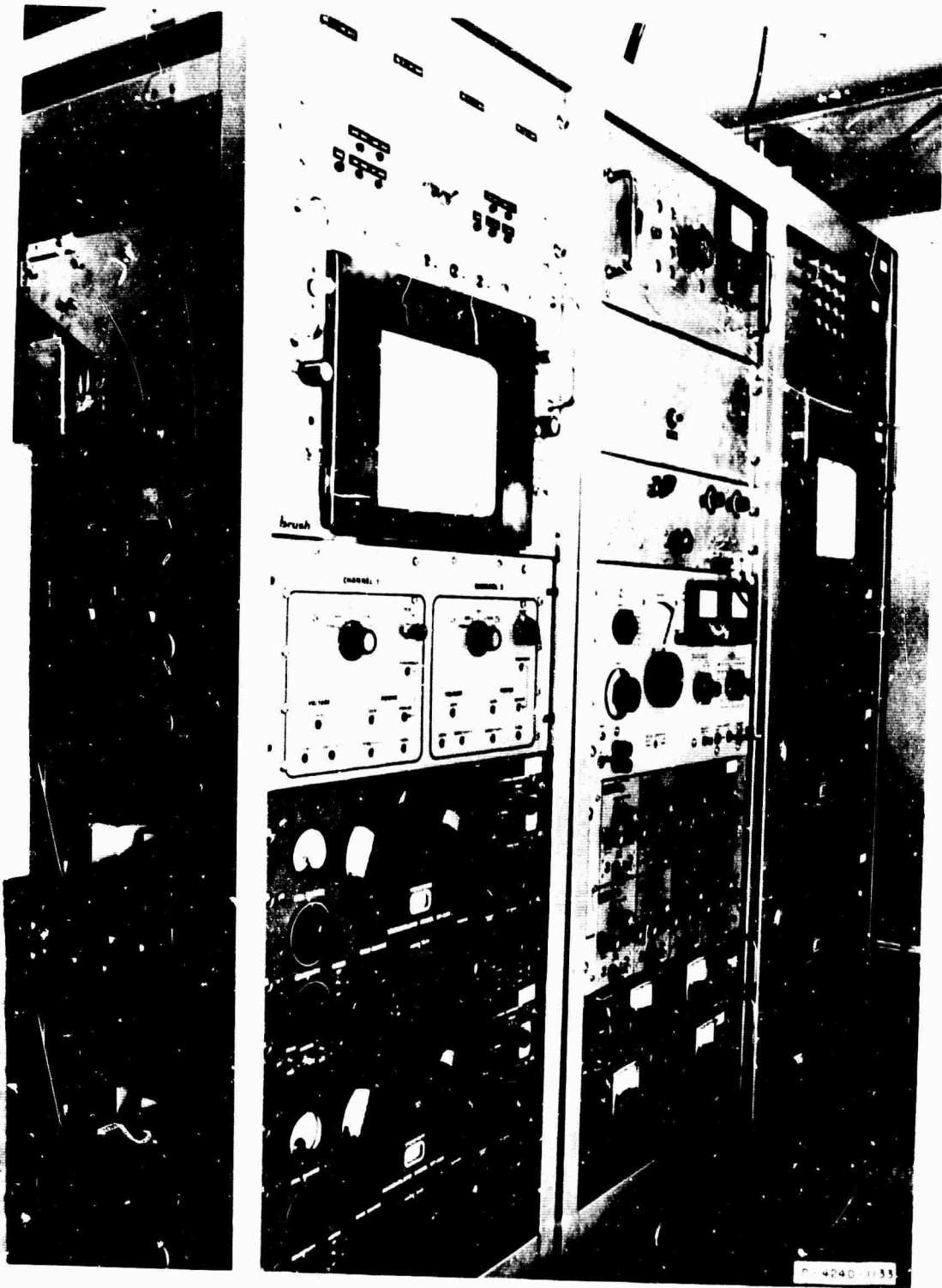
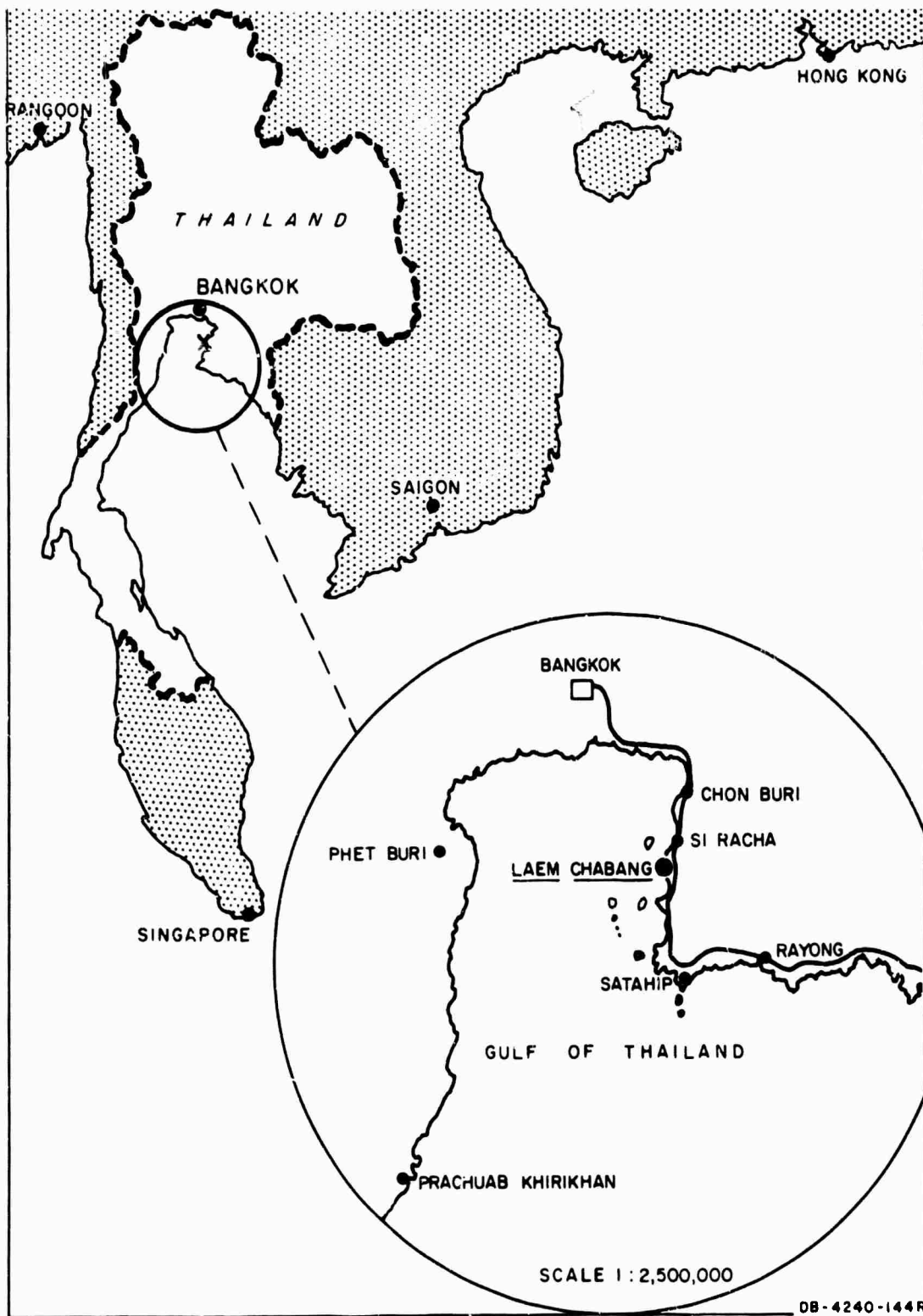


FIG. 1 ARN-3 ATMOSPHERIC RADIO NOISE MEASURING EQUIPMENT



08-4240-144R

FIG. 2 LOCATION OF THE RADIO NOISE RECORDING STATION AT LAEM CHABANG, THAILAND

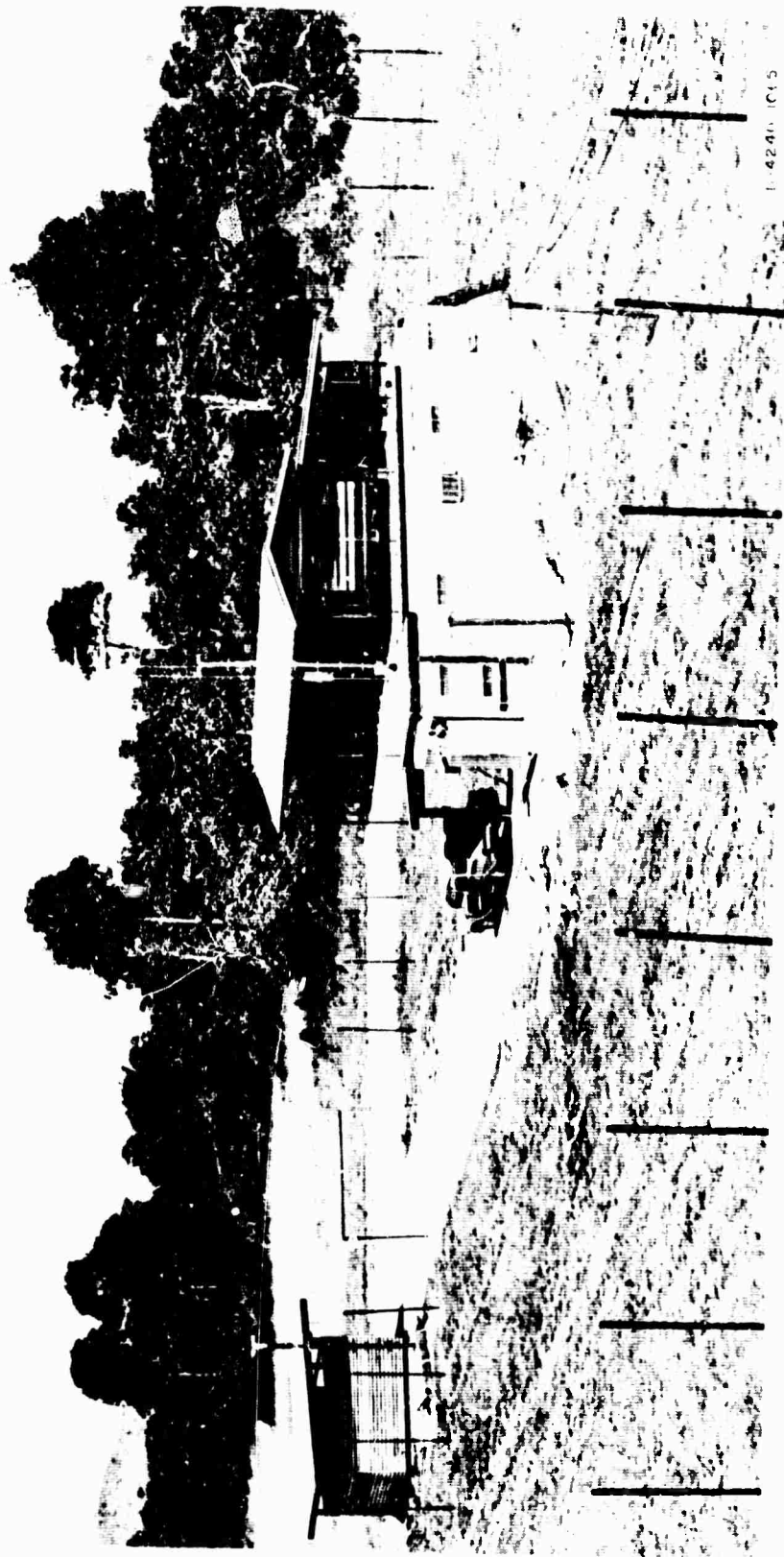


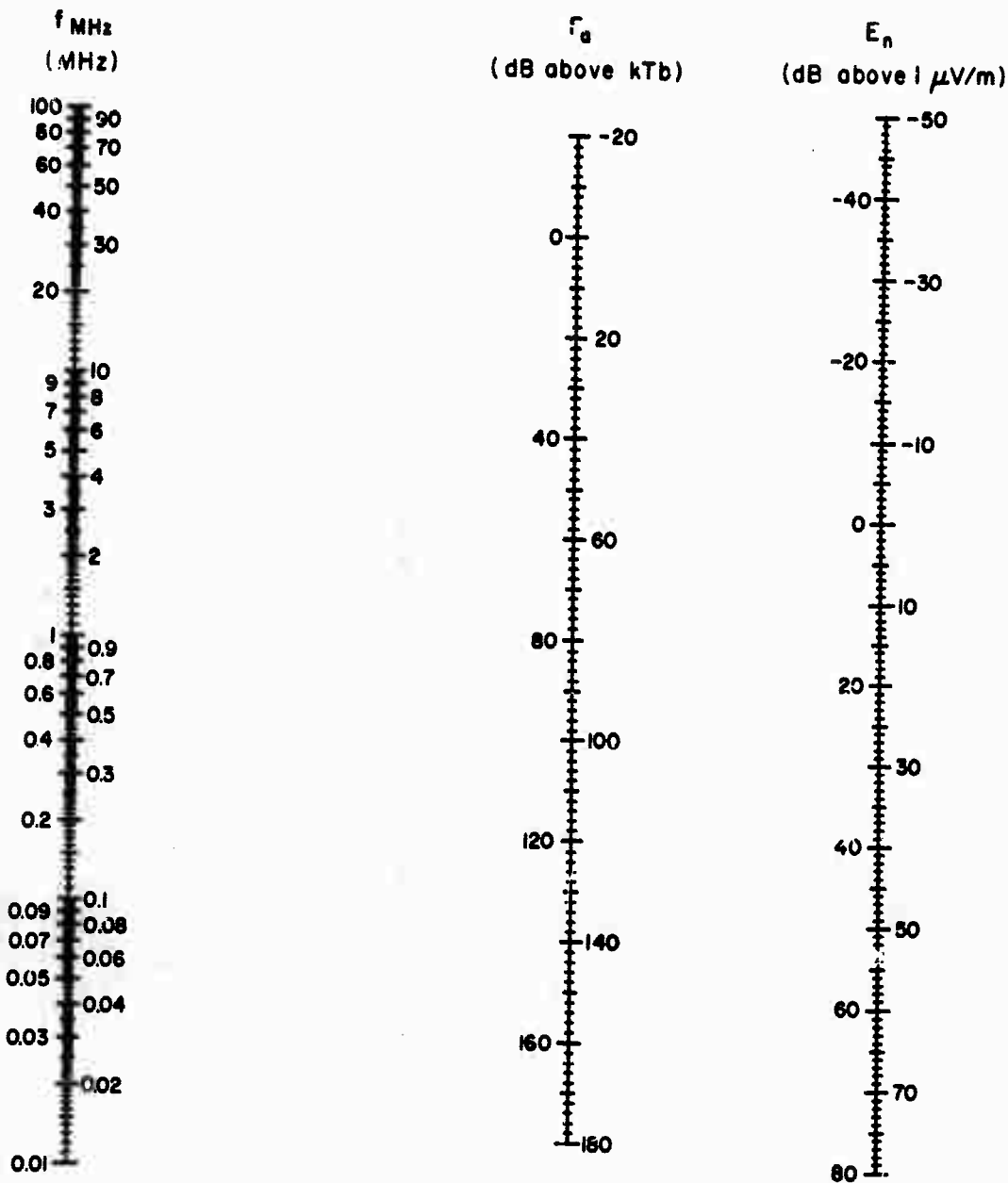
FIG. 3 RADIO NOISE RECORDING STATION

Table I  
 RADIO NOISE MEASURING SITE AT  
 LAEM CHABANG, THAILAND

GEOGRAPHIC LOCATION		ELEVATION, ANGLE OF HORIZON
Latitude	Longitude	
13.55°N	100.90°E	Less than 3 degrees in all directions; zero degrees towards the west (Gulf of Thailand)

Table II  
 ARN-3 RADIO NOISE RECORDER SPECIFICATIONS

Antenna	Standard 6.6294-meter (21.75 feet) vertical antenna with ground plane consisting of ninety radial wires, each approximately 100 feet long.
Frequencies of Measurement	6, 13, 27, 160, 530, 2,300, 5,000, and 10,000 kHz.
Effective noise bandwidth of receiver	200 Hz
Recording chart speed	5 cm per hour



$$E_n = F_a + 20 \log_{10} f_{\text{MHz}} - 65.5 \quad \text{DB-4240-261}$$

$F_a$  = Effective Antenna Noise Figure = External Noise Power Available from an Equivalent Short, Lossless, Vertical Antenna in dB Above  $kTb$ .

$E_n$  = Equivalent Vertically Polarized Ground Wave rms. Noise Field Strength in dB Above  $1 \mu\text{V}/\text{meter}$  for a 1-kHz Bandwidth.

$f_{\text{MHz}}$  = Frequency in MHz

Source: ESSA Tech. Report IER 18-ITSA 18-28

FIG. 4 NOMOGRAM FOR TRANSFORMING EFFECTIVE ANTENNA NOISE FIGURE TO NOISE FIELD STRENGTH AS A FUNCTION OF FREQUENCY

## II DISCUSSION

The noise data contained in this report are compatible with the data in a series of Technical Notes published by ITSA,\* (Series 18) "Quarterly Radio Noise Data." The following two parameters of the atmospheric noise are tabulated in the Appendix:

- (1) Mean power
- (2) Mean envelope voltage.

The mean power is a basic parameter and is expressed as an effective antenna noise factor,  $F_a$ .  $F_a$  is defined as the noise power available from an equivalent loss-free antenna in dB above  $kTb$ , the thermal noise power available from a passive resistance, where

$k$  = Boltzmann's constant ( $1.38 \times 10^{-23}$  joules per degree Kelvin)

$b$  = Effective receiver noise bandwidth (Hz)

$T$  = Reference temperature, taken as 288° Kelvin.

The mean envelope voltage,  $V_d$ , is expressed as a deviation in dB below the mean power.

Four frequencies, either in the MF and HF bands or in the VLF and LF bands, may be recorded simultaneously for 30 minutes. Switching between the two sets of four frequencies is accomplished automatically each half hour. The average power and the mean envelope voltage are recorded on an 8-channel strip-chart recorder. The thirty-minute samples are taken as representing the noise condition for the full hour. ( )

The month-hour medians for power and voltage,  $F_{am}$  and  $V_{dm}$ , respectively, are determined from the hourly values scaled from the chart recordings for each of the corresponding frequencies. Normally, from twenty-five to thirty observations of the mean power are obtained monthly

---

\*Institute for Telecommunication Sciences and Aeronomy, of the Institutes for Environmental Research, Environmental Science Services Administration, U.S. Department of Commerce.

for each hour of the day and from ten to fifteen observations of the voltage deviations. When there are fewer than fifteen observations of the mean power or seven observations of the voltage deviations, the tabulated values in the Appendix are identified by an asterisk.

The extent of the variation of the noise power from day to day at a particular hour of the day can be determined from the upper and lower decile values of  $F_{\mu}$ . These are expressed in dB above and below the month-hour median,  $F_{\mu m}$ , and designated by  $D_u$  and  $D_l$ , respectively, in Table A-1.

Time-block median values of noise are tabulated on a seasonal basis and are obtained by averaging all month-hour medians for the four hours of the day within the three-month period (see Table A-2 and Fig. A-1). The time-block values conform to the seasonal time-block values used in CCIR Report No. 322.

The results of the noise measurements at MF and HF for the months March, April, and May 1966, are given in this report. No data for LF and VLF for these months are available, but it is expected that data for these frequency bands will be published in subsequent reports.

**APPENDIX**  
**RADIO NOISE VALUES**

Table A-1

## MONTH-HOUR VALUES OF RADIO NOISE

Station: LAEM-CHABANGLat. 13.05°NLong. 100.9°EMonth March 1967

HH, (LT)	FREQUENCY (MHz)															
	0.53				2.3				5.0				10.0			
	F <sub>am</sub>	D <sub>u</sub>	D <sub>l</sub>	V <sub>dm</sub>	F <sub>am</sub>	D <sub>u</sub>	D <sub>l</sub>	V <sub>dm</sub>	F <sub>am</sub>	D <sub>u</sub>	D <sub>l</sub>	V <sub>dm</sub>	F <sub>am</sub>	D <sub>u</sub>	D <sub>l</sub>	V <sub>dm</sub>
00	99	4	11	2.5	76	9	7	2.0	60	10	10	1.0	47	10	5	1.0
01	98	6	12	3.0	75	12	11	2.5	62	10	9	1.0	47	9	5	2.0
02	97	7	13	4.0	76	12	13	3.0	61	9	8	2.0	46	8	7	1.0
03	97	7	13	4.0	75	11	9	4.0	60	10	9	1.5	44	11	5	1.5
04	57	6	16	4.0	74	12	11	4.0	59	7	9	2.0	44	15	8	1.5
05	95	6	11	4.5	73	13	9	4.0	61	7	14	2.0	47	14	10	0.5
06	90	6	5	2.0	73	14	12	2.0	*59	--	--	2.0	51	11	11	1.0
07	82	10	10	2.0	66	9	12	2.0	48	7	5	2.0	44	7	13	1.0
08	78	13	9	3.0	54	5	7	2.0	43	9	5	3.0	37	8	9	2.0
09	76	9	11	4.0	51	10	8	2.5	42	6	5	2.5	34	10	4	2.0
10	75	14	10	3.0	52	10	9	3.0	41	7	5	2.5	*34	--	--	1.5
11	*86	--	--	2.0	55	7	8	2.0	43	4	7	3.0	*35	--	--	1.0
12	*96	--	--	2.0	58	5	10	2.0	42	8	5	2.0	34	7	4	2.0
13	*76	--	--	2.5	57	5	8	2.0	42	11	4	2.0	36	7	9	2.0
14	81	13	16	5.0	57	9	9	3.0	43	12	5	2.5	36	6	5	2.5
15	87	8	23	5.5	61	11	11	1.5	46	11	8	2.0	41	5	7	3.0
16	92	9	16	5.0	67	17	10	1.0	51	9	8	1.0	47	8	10	3.0
17	93	15	10	3.0	75	10	12	1.5	61	8	9	1.0	50	15	7	2.0
18	97	4	9	2.0	79	5	11	1.5	67	12	11	0.5	59	6	16	2.0
19	99	4	11	3.0	77	11	10	2.0	69	10	11	0.5	55	9	10	1.5
20	98	6	10	3.0	77	11	8	2.0	72	6	14	1.0	57	10	11	1.0
21	100	5	11	2.0	77	12	6	2.0	71	10	11	1.0	59	10	10	1.0
22	100	4	9	2.5	79	9	9	2.0	70	7	11	1.0	57	10	12	0.5
23	100	4	11	3.0	75	10	7	2.0	65	9	11	1.0	50	11	6	1.0

- \* = Less than 15 days/month for F<sub>am</sub> or less than 7 days/month for V<sub>dm</sub>  
 F<sub>am</sub> = Median value of effective antenna noise in dB above ktb  
 D<sub>u</sub> = Ratio of upper decile to median in dB  
 D<sub>l</sub> = Ratio of median to lower decile in dB  
 V<sub>dm</sub> = Median deviation of average voltage in dB below mean power

Table A-1 (Continued)

## MONTH-HOUR VALUES OF RADIO NOISE

Station: LAEM-CHABANGLat. 13.05°NLong. 100.9°EMonth April 1967

HR. (LT)	FREQUENCY (MHz)															
	0.53				2.3				5.0				10.0			
	F <sub>am</sub>	D <sub>u</sub>	D <sub>l</sub>	V <sub>dm</sub>	F <sub>am</sub>	D <sub>u</sub>	D <sub>l</sub>	V <sub>dm</sub>	F <sub>am</sub>	D <sub>u</sub>	D <sub>l</sub>	V <sub>dm</sub>	F <sub>am</sub>	D <sub>u</sub>	D <sub>l</sub>	V <sub>dm</sub>
00	99	7	7	3.0	76	6	3	3.0	66	12	9	1.0	60	6	5	2.0
01	99	9	10	4.0	76	7	3	3.0	65	13	9	1.0	62	5	3	9.5
02	100	7	12	4.0	76	4	5	4.0	66	14	14	1.0	57	7	9	9.5
03	99	9	8	4.0	75	16	5	4.0	66	10	10	1.0	59	8	10	10.0
04	100	7	9	5.0	74	12	6	5.0	66	9	11	1.5	61	10	7	5.0
05	97	13	11	5.0	74	8	6	4.5	68	9	10	1.0	64	5	6	6.0
06	90	22	8	3.0	69	17	4	5.0	58	16	5	2.5	62	4	7	2.0
07	86	17	8	6.0	70	18	7	6.0	52	6	6	3.0	50	4	8	7.0
08	90	15	16	6.0	65	9	10	6.0	47	9	3	3.5	42	9	6	9.0
09	84	20	10	8.0	65	12	8	6.0	47	11	5	3.0	39	9	6	9.5
10	88	25	14	8.0	64	13	12	6.0	47	10	5	2.5	38	7	7	7.5
11	105	12	25	4.0	66	21	14	5.0	49	20	7	4.0	39	14	7	9.0
12	107	12	28	7.5	72	17	19	7.0	51	10	9	4.0	41	13	8	7.0
13	107	12	24	7.0	76	12	22	6.5	54	11	9	4.0	39	14	4	7.0
14	107	11	25	6.0	78	12	22	5.5	57	7	14	4.0	47	9	9	9.0
15	110	6	19	5.0	79	12	17	5.0	57	6	10	3.5	48	10	7	8.5
16	105	9	19	5.0	77	9	12	4.0	58	6	6	2.5	53	6	8	3.0
17	104	7	10	4.0	80	5	7	3.0	64	9	5	1.0	61	6	7	4.0
18	104	6	13	3.0	81	6	9	2.5	71	6	7	0.5	66	6	5	3.0
19	104	5	10	4.0	81	3	8	2.5	71	4	4	0.5	65	5	4	5.0
20	104	5	11	3.0	80	6	4	2.0	73	3	5	0.5	69	3	5	3.0
21	104	3	11	3.0	80	6	4	2.5	73	9	6	0.5	68	5	3	2.0
22	103	5	7	3.0	79	7	4	3.0	69	10	4	0.5	68	3	5	9.0
23	101	7	9	3.0	77	5	6	3.0	64	14	6	1.0	63	5	6	2.5

F<sub>am</sub> = Median value of effective antenna noise in dB above ktbD<sub>u</sub> = Ratio of upper decile to median in dBD<sub>l</sub> = Ratio of median to lower decile in dBV<sub>dm</sub> = Median deviation of average voltage in dB below mean power

Table A-1 (Concluded)

## MONTH-HOUR VALUES OF RADIO NOISE

Station: LAEM-CHABANGLat. 13.05°NLong. 100.9°EMonth May 1967

HR. (LT)	FREQUENCY (MHz)															
	0.53				2.3				5.0				10.0			
	F <sub>am</sub>	D <sub>u</sub>	D <sub>l</sub>	V <sub>dm</sub>	F <sub>am</sub>	D <sub>u</sub>	D <sub>l</sub>	V <sub>dm</sub>	F <sub>am</sub>	D <sub>u</sub>	D <sub>l</sub>	V <sub>dm</sub>	F <sub>am</sub>	D <sub>u</sub>	D <sub>l</sub>	V <sub>dm</sub>
00	104	7	12	3.0	78	8	3	2.5	63	8	3	2.0	59	11	7	9.0
01	104	8	13	4.0	78	5	4	3.0	63	9	3	2.0	60	7	9	9.0
02	102	8	11	4.0	78	8	6	3.0	63	10	3	2.0	59	13	5	8.5
03	101	9	10	4.0	76	9	4	3.0	61	12	3	2.0	*60	--	--	9.0
04	100	10	13	4.0	78	5	6	4.0	62	6	7	2.5	58	7	5	10.0
05	93	16	11	3.5	77	5	7	3.0	62	8	6	2.0	64	6	7	9.0
06	91	21	11	2.0	73	9	7	2.5	59	7	7	2.0	61	8	8	10.0
07	90	21	15	2.0	70	13	5	3.0	57	11	5	3.0	51	14	7	10.0
08	90	17	15	3.0	71	6	8	3.0	51	8	4	3.0	45	8	8	10.0
09	87	22	10	7.0	69	9	5	3.0	49	8	4	3.0	41	10	12	10.0
10	88	13	17	6.0	69	5	5	3.0	49	8	5	3.0	41	11	8	9.0
11	90	17	13	5.0	69	8	7	2.5	51	8	6	3.5	39	10	7	9.0
12	92	17	14	6.0	70	10	6	2.5	51	9	6	4.0	41	8	7	9.0
13	99	13	12	8.0	71	7	5	4.0	51	10	8	4.0	43	8	8	9.0
14	102	13	16	8.0	74	12	8	4.0	53	9	4	4.0	43	6	5	8.0
15	104	7	16	8.0	72	11	3	4.0	56	8	7	3.0	47	9	7	8.0
16	104	9	13	6.5	75	8	8	3.5	59	5	6	3.0	52	7	8	8.0
17	102	9	11	6.0	78	7	6	2.0	62	2	4	2.0	63	5	12	8.0
18	101	9	8	4.0	79	5	5	2.0	68	2	5	1.0	67	4	6	8.0
19	101	8	8	4.0	79	7	3	2.0	71	3	7	1.5	66	5	5	8.0
20	102	6	9	3.5	80	5	4	2.0	70	3	5	1.5	67	4	5	8.0
21	103	6	9	3.5	81	4	5	2.0	70	4	5	1.5	67	5	5	8.5
22	103	6	10	3.0	80	4	4	2.0	68	6	5	2.0	67	6	7	9.0
23	104	6	11	3.5	79	8	5	2.0	62	12	3	2.0	60	10	10	10.0

\* = Less than 15 days/month for F<sub>am</sub> or less than 7 days/month for V<sub>dl</sub>F<sub>am</sub> = Median value of effective antenna noise in dB above ktbD<sub>u</sub> = Ratio of upper decile to median in dBD<sub>l</sub> = Ratio of median to lower decile in dBV<sub>dm</sub> = Median deviation of average voltage in dB below mean power

Table A-2

THREE-MONTH TIME-BLOCK VALUES OF RATIO NOISE

Station: LAEM CHABANG Lat. 13.05°N Long. 100.9°E Period March-April-May 1967

FREQUENCY (MHz)	TIME BLOCKS (LST)																							
	0000-0400			0400-0800			0800-1200			1200-1600			1600-2000			2000-2400								
	F <sub>am</sub>	D <sub>u</sub>	D <sub>l</sub>	V <sub>dm</sub>	F <sub>am</sub>	D <sub>u</sub>	D <sub>l</sub>	V <sub>dm</sub>	F <sub>am</sub>	D <sub>u</sub>	D <sub>l</sub>	V <sub>dm</sub>	F <sub>am</sub>	D <sub>u</sub>	D <sub>l</sub>	V <sub>dm</sub>	F <sub>am</sub>	D <sub>u</sub>	D <sub>l</sub>	V <sub>dm</sub>				
0.53	100	7	11	4.0	93	13	11	3.5	86	16	14	5.0	97	11	19	6.0	101	8	12	4.0	102	5	10	3.0
2.3	76	9	6	3.0	73	11	8	4.0	63	10	8	4.0	69	9	12	4.0	77	8	8	2.0	79	7	6	2.0
5	63	11	8	1.5	59	8	8	2.0	46	8	5	3.0	47	9	7	3.0	64	6	7	1.0	69	8	7	1.0
10	55	9	6	6.0	55	9	8	5.0	39	10	7	7.0	41	9	7	6.0	59	7	8	5.0	63	7	7	5.0

F<sub>am</sub> = Median value of effective antenna noise in dB above ktb

D<sub>u</sub> = Ratio of upper decile to median in dB

D<sub>l</sub> = Ratio of median to lower decile in dB

V<sub>dm</sub> = Median deviation of average voltage in dB below mean power

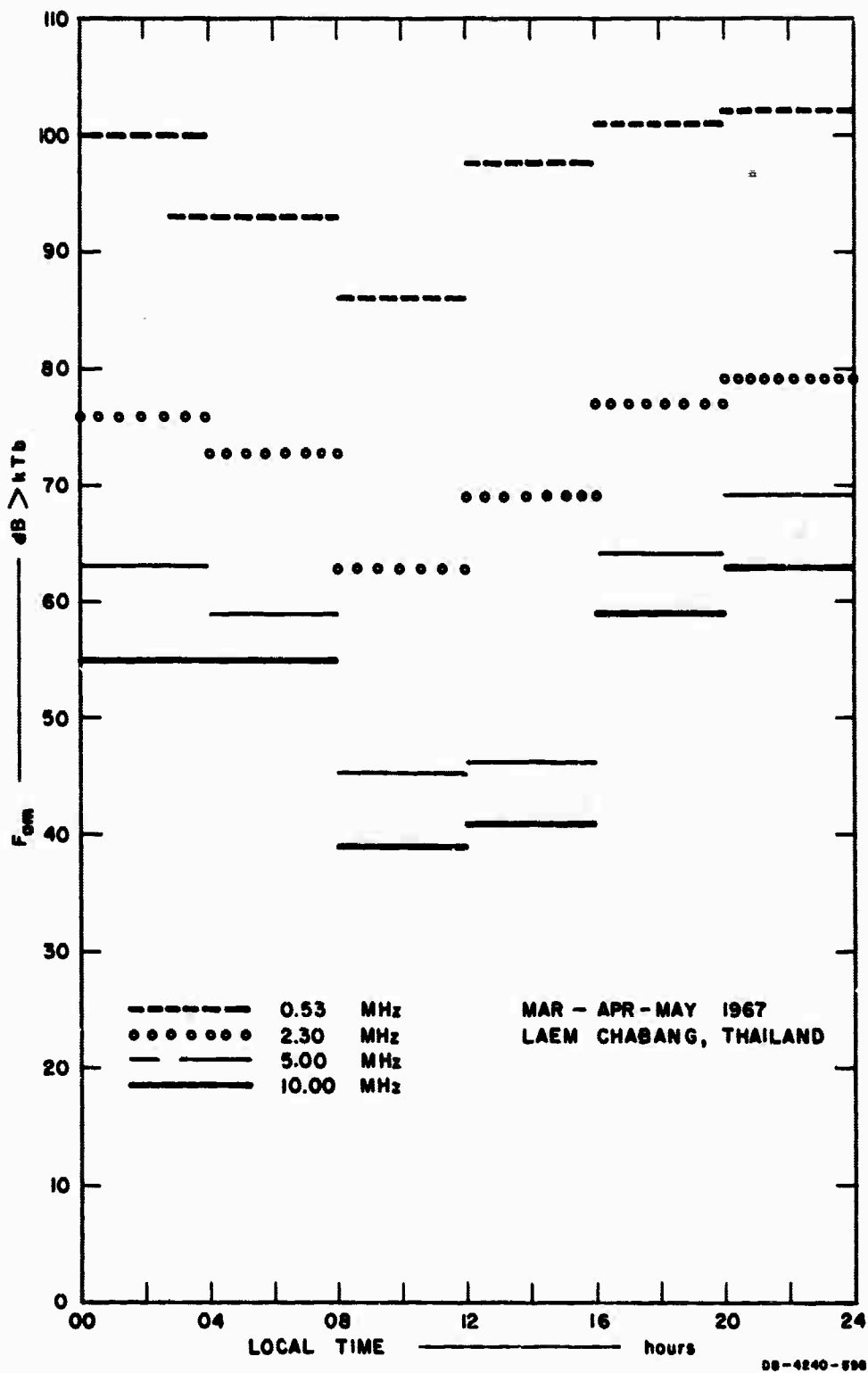


FIG. A-1 THREE-MONTH MEDIAN TIME-BLOCK VALUES OF RADIO NOISE POWER



14 KEY WORDS	LINK A		LINK B		LINK C	
	ROLE	WT	ROLE	WT	ROLE	WT
Radio Noise Atmospheric Noise Radio Noise Recorder APN-3 VLF, LF, MF, HF Thailand SEACORE						