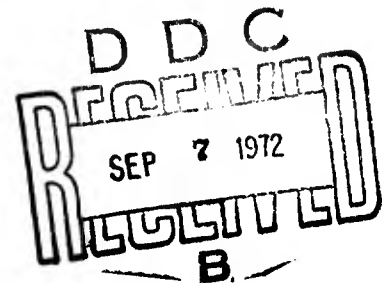


AD 747754

ALLOCATION OF UNITS
WITHIN A TYPICAL FIELD ARMY

A thesis presented to the Faculty of the US Army
Command and General Staff College in partial
fulfillment of the requirements of the
degree

MASTER OF MILITARY ART AND SCIENCE



by

G. E. BLUME, MAJ, USA
B.S., University of Wisconsin, 1957

DISTRIBUTION STATEMENT A

Approved for public release;
Distribution Unlimited

Fort Leavenworth, Kansas
1972

Reproduced by
NATIONAL TECHNICAL
INFORMATION SERVICE
U S Department of Commerce
Springfield VA 22151

THESIS APPROVAL

Name of Candidate GEOFFREY E. BLUME, MAJ, USA

Title of Thesis ALLOCATION OF UNITS WITHIN A TYPICAL FIELD ARMY

Approved by:

Frank E. Price, Chairman, Oral Examination Committee

Leif P. Boy, Research and Thesis Advisor

_____, Member, Graduate Research Faculty

John D. Prather, Member, Consulting Faculty

_____, Member, Consulting Faculty

Date: _____

The opinions and conclusions expressed herein are those of the individual student author and do not necessarily represent the views of either the US Army Command and General Staff College or any other governmental agency. (References to this study should include the foregoing statement.)

ABSTRACT

This paper presents in detail the organization of a type field army designed for combat in a mid-intensity conflict, Central Europe, in the 1970's.

The methodology used to develop the force is unique to previous published attempts in that combat support and combat service support units were allocated on the basis of quantitative workloads generated by a war-game.

The conclusion reached is that the field army developed by a rational process is much larger--by almost one-third--than that structured without considering the combat environment, intensity of combat, and the resultant workloads to be satisfied.

ACKNOWLEDGMENTS

I would like to express my appreciation to all of the members of the US Army Combat Developments Command Combat Systems Group, Fort Leavenworth, Kansas, who assisted me in bringing this idea to a reality. In particular, I would like to thank Colonel Walter D. Adkins, Director, Division Doctrine and Organization; Lieutenant Colonel Joe Byron and Mr. Emery Peterson of the Models Information Systems Division; and especially Lieutenants Joe White and Terry Ricer, who labored with the actual running of the computer programs.

The advice and assistance of my Consulting Faculty, Lieutenant Colonel John L. Prather and Captain David C. Skaggs, is acknowledged and appreciated.

GEB

TABLE OF CONTENTS

	Page
LIST OF TABLES	vii
LIST OF FIGURES	ix
 Chapter	
I. INTRODUCTION	1
The Problem	1
Analysis	2
Assumptions	6
Delimitations	7
Theoretical Framework	9
II. DESIGN OF INVESTIGATION	11
Research Methodology	11
Exercise Program of Analysis Development	16
III. EXERCISE PROGRAM OF ANALYSIS	25
General	25
Force Description	25
Operational Data	25
Logistics Network Data	25
Selected Consumption Data	28
Engineer Workload Information	30
Medical Program Data	34
Military Police Subroutine	35

Chapter	Page
IV. THE FIELD ARMY	36
General	36
Command and Control Units	36
Combat Units	38
Combat Support Units	42
Combat Service Support Units	74
V. SUMMARY	95
APPENDIX A, DTM LIST	100
APPENDIX B, SELECTED EXTRACTS, US ARMY WAR COLLEGE QUESTIONNAIRE .	113
BIBLIOGRAPHY	120

LIST OF TABLES

Table	Page
1. Operational Data	27
2. Transportation Network Characteristics	28
3. Selected Consumption Data	29
4. Engineer Program Summary	31
5. Medical Program Data	34
6. Military Police Subroutine	35
7. Command and Control Headquarters Allocations	38
8. Combat Unit Allocations	41
9. Divisional Field Artillery Unit Allocations	43
10. Field Artillery Support to the Separate Brigades	43
11. Corps Field Artillery Unit Allocations	44
12. Field Army Field Artillery Allocations	46
13. Divisional Air Defense Unit Allocations	46
14. Field Army Air Defense Artillery Brigade Unit Allocations	48
15. Divisional Aviation Unit Allocations	49
16. Corps Aviation Unit Allocations	49
17. FASCOM Aviation Unit Allocations	51
18. Field Army Aviation Unit Allocations	51
19. Chemical Unit Allocations	54
20. Civil Affairs Unit Allocations	57
21. Divisional Engineer Unit Allocations	58
22. Separate Brigade Engineer Unit Allocations	59

Table	Page
23. Corps Engineer Unit Allocations	61
24. FASCOM Engineer Unit Allocations	61
25. Field Army Engineer Unit Allocations	62
26. Military Intelligence Unit Allocations	64
27. Army Security Agency Unit Allocations	65
28. Military Police Unit Allocations	68
29. Signal Unit Allocations	72
30. Psychological Operations Unit Allocations	74
31. Ammunition Unit Allocations	76
32. Judge Advocate General Unit Allocations	77
33. Maintenance Unit Allocations	79
34. Medical Unit Allocations	84
35. Personnel and Administrative Services Unit Allocations	88
36. Finance Unit Allocations	88
37. Chaplain Unit Allocations	89
38. Supply and Services Unit Allocations	91
39. Transportation Unit Allocations	93
40. Military History Detachment Allocations	94
41. Public Information Unit Allocations	94

LIST OF FIGURES

Figure	Page
1. Figure 3-30, Army '75, Volume I	22
2. MODFPS Combat Module Input	26
3. Command and Control Units	37
4. Combat Units	39
5. Separate Air Cavalry Brigade (Conceptual)	40
6. Corps Artillery Organization	45
7. ADA Brigade Organization	47
8. Corps Aviation Group	50
9. FASCOM Aviation Battalion	52
10. Chemical Group, Field Army	53
11. Civil Affairs Brigade	56
12. Typical Corps Engineer Brigade	60
13. Army Engineer Brigade	63
14. MP Brigade, Field Army	67
15. Army Signal Brigade	70
16. Psychological Operations Group, Field Army	73
17. Medical Brigade, FASCOM	81
18. Personnel and Administration Battalions, FASCOM	87
19. Transportation Brigade, FASCOM	92

Chapter I

INTRODUCTION

The Problem

This paper is an investigation of the effect of the application of the significant elements of a combat environment on the allocation of units to a field army.

It has not been until recently that there has existed a credible capability to structure an army using all four of the basic variables which influence the rules of allocation of units to a force--the mission, characteristics of the area of operations, availability of units and nature of the operation. This capability is now available through the use of computerized wargames and logistics models that store and manipulate masses of data.

This paper will investigate the design of a field army structured to meet operational requirements in a single theater of operations under a given set of assumptions. The force structure will be examined to determine the justification for the basis of individual unit allocations.

On completion of the analysis of the allocation of the units, the field army developed should be representative of one designed to operate with current units and under realistic constraints--a credible force for the combat environment selected.

Analysis

Background of the Problem

A field army is composed of units on the basis of the mission which it is assigned, the characteristics of the area of operations in which it will operate, the availability of units for assignment, and the nature of the operation.¹

Because many variables impact upon these basic elements of its foundation, it would appear that a type or typical field army is at best difficult to develop. Two attempts have been made, however, to present such an organization. Field manual 101-10-1, Staff Officer's Field Manual, Organizational, Technical and Logistical Data, Unclassified Data, presents several unit and personnel summaries for a typical field army consisting of some 495,560 personnel.² The United States Army Command and General Staff College (CGSC) Reference Book, Organizational Data for the Army in the Field (RB 101-1), presents a type field army of 490,668 personnel consisting of the same number and type of combat divisions.³

There are several problems in the development of both these field armies. The primary is their inability to adhere fully to the basic precepts upon which the field army is to be developed. Neither approach has assumed all the elements of a combat environment. Nor did

¹FM 100-15, Larger Units, Theater Army-Corps (Department of the Army, December 1968), para. 7-2, p. 7-1.

²FM 101-10-1, Staff Officer's Field Manual, Organizational, Technical and Logistical Data, Unclassified Data (Department of the Army, July 1971), para. 1-6, p. 1-4.

³RB 101-1, Organizational Data for the Army in the Field (US Army Command and General Staff College, 1 April 1971), para. 2-3a, p. 2-11.

either assume a combat posture, i.e., attack, defend, delay, etc. Each assumed maneuver elements and assigned organizations by following Field Manual 101-10-2, Staff Officer's Field Manual, Organizational, Technical and Logistical Data, Extracts of Non-divisional Tables of Organization and Equipment. These organizational plans were therefore unable to give full consideration to what is considered to be the primary basis of force structure--workload to be satisfied, be it a combat mission or a combat support requirement, to assist the maneuver elements in bringing firepower to bear on the enemy. All of this will be covered in greater detail later. However, it is significant to point out some aspects of this problem which may not be apparent to those not intimately engaged in the day to day business of logistics planning.

Why is a typical field army needed? Basically, the typical field army of FM 101-10-1 has been used in several roles in logistical planning. The planner requires a point of departure when wargaming force deployments or making first cut estimates at requirements for all forms of combat support and combat service support. He has to have some vehicle, in this case the typical field army, to which he can apply planning factors to determine logistical support requirements.

The typical field army is assumed, by virtue of its appearance in a Department of the Army field manual, to represent a balanced force and is indicative of that which would be deployed to the field in an emergency. From it, equipment and personnel densities can be obtained which can be used as a basis for planning. This all sounds fairly innocent and academic until one appreciates the extent to which the results of this practice have been applied.

The most significant application is, perhaps, the division slice tables and the associated supply consumption tables in FM 101-10-1. By definition, the basic division slice represents that portion of the personnel within a given theater of operations that is associated with that division's presence there.⁴

The slice is determined by simply dividing the total personnel strength in a theater by the number of divisions present, regardless of their type. This personnel total is then used as a basis for the generation of demand tables for all of the classes of supply in terms of pounds per man per day.

This procedure has inaccuracies built into it. These are acknowledged in the field manual which tells the user to use local experience as soon as it is available.⁵ The problem is, however, that in the formulation of strategic plans, wargames, and the like, there is little opportunity for these demands to even materialize, much less be recorded.

A well defined and credible field army is essential to the development of the theater strength total upon which the division slice is based.

It must be emphasized that all of the staff work that has been or will be accomplished in this area is only going to be as effective as the facts upon which it is based.

Most logistics planning is based on an anticipated demand for supplies, services or maintenance. One needs to know the composition of

⁴FM 101-10-1, op. cit., para. 2-7b(1), p. 2-5.

⁵Ibid., para. 1-1b, p. 1-1.

his force in terms of consumers, or those who create a demand, before he can determine how much of a particular commodity or capability is going to be required to support it. The capability to provide the commodities and services to the force are units which not only satisfy the initial requirements, but in turn generate requirements for supplies and services themselves.

Combat support and combat service support units must be given additional capabilities to accommodate these additional requirements. This is termed "force roundout." When a force is properly rounded out, there exists a rather inviolate relationship between units. The force should be structured so that if one should vary the support elements arbitrarily, the consequence would be detrimental to its overall effectiveness.

The design of maneuver units, such as the basic infantry and tank battalions, is centered around a firepower capability; a design, if you will, of a degree of firepower potential that is required to be used against an assumed adversary. Mobility, to varying degrees, is incorporated within the respective organizations according to anticipated employment. Therein lies the flexibility we hope to enjoy with the unit. By combining maneuver elements, units of varying firepower potential can be produced.

These units are developed on the basis of balance between those that generate a support requirement and individuals, such as cooks, supply, and maintenance specialists, which satisfy them. A similar relationship exists between maneuver, combat support, and combat service support units; a relationship that is virtually nonvariable in a given environment.

Given that environment, a threat, and associated constraints, such as force strength limitations, or units to draw from, it follows that once the strategist has selected his firepower delivery units, the combat support and combat service support elements can be computed on the basis of quantitative workloads necessary to sustain them. This is completely consistent with the definition of the field army as previously presented.⁶

Assumptions

To develop a field army, the following must be established. First, a combat environment must be assumed. One must determine where the battle will be fought. This can be accomplished by a threat analysis. Once established, the environment will provide data upon which workloads can be estimated. For example, the theater selected would have to be analyzed for adequacy of ports, harbors, lines of communication, airfields, and the like. The climate will influence the type of equipment and units that will be deployed. The existence or absence of essential facilities will determine the need for construction and support personnel.

Second, as a result of the threat analysis, maneuver units can be assigned to the force.

Next, the planner must select a mode for the engagement to establish a rate of consumption for supplies. It is obvious that an army in an attack posture will consume far more than one in a reserve role.

Fourth, one must consider whether the environment is to be nuclear

⁶FM 100-15, op. cit., para. 7-2, p. 7-1.

or nonnuclear. This is an important determination to be made, as the intangibles of nuclear warfare would greatly alter the force.

An assumption must also be made as to the extent of allied participation. This bears, not only on the mutual support that the field army would gain from the complementary forces of an organization such as NATO, but also as to the magnitude of the logistical forces that the US field army would be required to provide above and beyond those generated to satisfy its personal requirements.

Additionally, the planner must consider a strategy, or scheme of maneuver, to be employed by the field army; inherited assets existent within the area of operations; a statement regarding availability of units, either a general mobilization of CONUS or working with existing army assets; the degree of other service (Air Force, Navy, Marine) forces participation or support requirements imposed upon the field army; deployment constraints to be considered during the development of the area of operations; the duration of the hostilities; and logistics policies to address guidance that will govern the execution of that function.

What is important is maintenance of realism in the development of assumptions. Real world threats, anticipated missions, existing or programmed assets, and policies should be played, rather than hypothetical units and situations which have all too often been used in the past. All of the general categories of assumptions listed must be analyzed in relation to our current plans and capabilities for any typical field army developed to be viable.

Delimitations

Data Sources

In general, current threat and strategic analyses will be used

as a basis for investigation in the development of this paper. Consistent with the premise that assumptions should be based on real world data, extensive use was made of existing sources that are used as the basis for wargames and studies in support of the Army Staff.

Specifically, the worldwide threat data base that will be used is that supporting the Tactical, Logistical, and Air Simulation (ATLAS) combat model of the FOREWON Force Planning System.⁷

The Army '75 Study will be used in the development of the maneuver elements around which the force was structured. The Modular Force Planning System data bank will provide the details concerning unit strengths and capabilities.⁸

Tactical play will be accomplished through the use of the ATLAS wargame for the single theater of operations (STO) selected. The results of this wargame will provide the largest portion of the parametric input to the MODFPS, operated by the US Army Combat Developments Command (CDC) Combat Systems Group, Fort Leavenworth, Kansas. This model will be used to develop force relationships and the resultant field army troop list.

Data Source Cutoff Dates

Threat. FOREWON ASOP, August 1970.

Location. Student Survey, January 1972, Appendix A.

Unit Data. MODFPS Data Bank, January 1972.

Tactical Play. ATLAS Normal European Scenario, December 1971.

⁷The FOREWON Force Planning System, Volume I, Basic Report, RAC-R-86 (McLean, Virginia: Research Analysis Corporation, 1970), p. 45.

⁸For a description of the data bank, see Arthur Young and Company, Modular Force Planning System (Battalion Slice), Volume I, System Description (Bethesda, Maryland: Arthur Young and Company, March 1969), pp. 17-21.

Duration of Study. 1 September 1971 through 30 April 1972.

Theoretical Framework

Related Research and Professional Literature

There are two documents which present type or typical field armies. These are FM 101-10-1 and RB 101-1. FM 101-10-1 must be considered the only Department of the Army acknowledged presentation, as RB 101-1 has been designed specifically for use at the US Army Command and General Staff College.⁹

Both of these are closely related. FM 101-10-1 is the responsibility of CDC for proponency. The Institute of Combined Arms and Support, Fort Leavenworth, Kansas, was the executive agency of CDC specifically responsible for the manual. The Institute was collocated with the Command and General Staff College for coordination of Army doctrine that was incorporated in the various field manuals and studies for which it was responsible. There was a great deal of coordination effected with the development and maintenance of FM 101-10-1. The basis of the typical field army that appears in FM 101-10-1 was RB 101-1, using G-series tables of organization and equipment and what limited H-series information that was available at the time of publication.¹⁰ The only significant difference between the two publications is a few thousand difference in the overall strengths due to the series TOE's used.

The Command and General Staff College version of the typical field army was developed over the years of instruction at the institution.

⁹RB 101-1, op. cit., para. 2-2c, p. 2-1.

¹⁰FM 101-10-1, op. cit., para. 1-1b, p. 1-1.

There is no formal or informal historical record of how the force was originally developed. It is acknowledged, however, that the force was developed by assuming a twelve division maneuver force, assignment of type divisional and nondivisional support units where applicable, and accomplishment of the force roundout by use of FM 101-10-2.

A comprehensive application of the threat, combat environment or tactical scheme of maneuver to insure total force balance was beyond the capability of the resources applied to the project.¹¹ It adequately meets its purpose for use as an instructional vehicle at the CGSC, rather than as a force development guide.¹²

Academically, RB 101-1 is the more current of the two and will be used frequently as a basis for comparison throughout the balance of this paper.

¹¹During the period 15 December 1970 through 15 August 1971, I was assigned to USACDCICAS as project officer for FM 101-10-1. A search of all related CDC and CGSC files failed to reveal any material that would indicate that the current threat, combat environment or wargame was used in the development of the typical field army portrayed in the manual. Coordination with the CGSC project officer for RB 101-1 indicated that the RB was maintained annually by updating the assigned units to reflect TOE changes.

¹²RB 101-1, op. cit., para. 2-2c, p. 2-1.

Chapter II

DESIGN OF INVESTIGATION

Research Methodology

Research to develop the type field army required the determination of three factors necessary to solve the problem: (1) the location of a means that had the capabilities to provide an adequate solution; (2) the development of inputs for that means; and (3) the analysis of the solution.

Determination of the Means

The organization of the field army required the consideration of the interaction of supporting and supported units, the mission to the field army, the effects of the combat environment in which it would operate, and the satisfaction of quantitative workloads required to round out the force. To accomplish this task, two courses of action were considered.

The first course of action was manual computation of the force by use of Army field manuals 101-10-1 and 101-10-2. FM 101-10-1 would be used to develop quantitative workloads required by an assumed maneuver force operating in a specified environment, and FM 101-10-2 for the allocation of nondivisional units to the force.

The advantage to this approach lay in the fact that this had been the method by which the CGSC has structured the type field army of RB 101-1 in the past. One could assume control headquarters; the maneuver elements of the army, corps, and division; compile personnel and equipment

summaries; apply logistical planning factors to these sums to determine quantitative workloads; and then use FM 101-10-2 to arrive at the non-divisional units required to support the force.

The disadvantage of this approach was that one could not inject the impact of what the units were doing into the development of the quantitative workloads. FM 101-10-1 just does not have that type of data. The gross planning figures for consumption of each of the 10 classes of supply in the manual are based on the theoretical division slice, or on World War II data which are difficult, at best, to validate.¹

Even if one accepts the workloads developed by use of FM 101-10-1, an immediate problem arises when FM 101-10-2 is applied to derive non-divisional unit allocations. It has a data source cutoff date of 15 June 1970. Since that time, a great deal of effort has been made to modernize the nondivisional TOE's. Thus, the manual is now badly out of date, containing only five H-series units, a mere fraction of those currently in force for the units listed. This means that there are changes, not only in units, but also in capabilities that would affect the allocation of units.

The conclusion reached during the analysis of this course of action was that any product derived by the technique, even considering that this method is currently used by the CGSC, could be deficient.

The second course of action analyzed was a computerized approach to the problem. Recognizing the need to attempt to simulate all of the requisites specified by FM 100-15, it was assumed that a wargame could

¹FM 101-10-1, Staff Officer's Field Manual, Organizational, Technical and Logistical Data, Unclassified Data (Department of the Army, July 1971), para. 5-26, p. 5-122.

be required.² Provided control headquarters, maneuver elements, and selected combat support units, such as artillery and engineer, the wargame would have to simulate the combat activities that generate quantitative workloads to facilitate force roundout. This wargame then, would have to satisfy the basic requirements of first the nature of combat operations and second the effects of the area of operations on the force.

The natural approach was to determine what computer program was currently being used to support force development for the Army staff. The FOREWON system was one such program located. Developed under contract by Research Analysis Corporation, McLean, Virginia, it is an automated force planning system to assist the Army staff in determining mid-range (2-10 years in the future) requirements for nonnuclear general purpose forces and in assessing the capabilities of those forces.

The FOREWON system accepts as input a set of worldwide situations that call for the presence or application of US military forces and derives a single objective force competent to achieve satisfactory results should any one of the set of distinct situations arise. A run of the system produces a fully rounded objective force troop list of all combat, combat support, and combat service support units, an optimum lift system for deployment of the objective force, and the 10 year costs of developing and maintaining the objective force and lift system starting with an existing force and lift system.³

Parts of the FOREWON system program can be run independent of the

²FM 100-15, Larger Units, Theater Army-Corps (Department of the Army, December 1968), para. 7-2, p. 7-1.

³The FOREWON Force Planning System, Volume I, Basic Report, RAC-R-86 (McLean, Virginia: Research Analysis Corporation, 1970), p. iv.

others and can be used as inputs for other computer programs. Specifically, the single theater of operations geographic and asset analyses and associated wargame scenarios used with the Force Analysis Simulation of Theater Administrative and Logistic Support (FASTALS) portion of the system can be used to provide a data base for a selected theater of operations. It was determined that the Normal European Scenario, prepared by RAC for the FASTALS element of the FOREWON system, provided data appropriate for the area of operations in which the type field army of this paper was to operate.

The next effort was to determine what program would be suitable to use in rounding out the support "tail" for the field army. Two programs currently being used accomplished this objective: FASTALS of the FOREWON system and The Modular Force Planning System (MODFPS) developed by Arthur Young and Company.

The FASTALS program is best and most simply described as follows. Given a situation in terms of unit deployments, logistic capabilities, and policies to be exercised, the program determines the total force necessary to support the situation. First, the combat and combat support units generated by the combat model of the system, ATLAS, are augmented by units which are implied by the organizational structure of the theater being analyzed. Next, units that are required on the basis of workloads, which for the most part are related to troop populations, are then computed. The workload quantities serve as a basis for the allocation of units that are necessary to accomplish the various workloads. These computations are performed for all time periods and regions within the theater.

The FASTALS program is essentially a cyclic process and is the

forerunner of the automated force development programs. It incorporates and automates the procedure for "existence allocation," workload computation, and allocation based on workloads, repeating until a point of balance is reached between units and workloads. The determination of additional increments of support to be added during each cycle is accomplished by evaluating the requirement for individual units between successive cycles.⁴

MODFPS is a computerized analytic model which generates a total force list as a function of any prespecified theater combat force mix and of certain theater-dependent (parametric) data inputs. The system provides a technique by which support unit requirements are computed as a function of the number and type of battalion-level combat units (modules) selected by a planner, together with certain theater, policy, and scenario parameters. The system thus permits the planner to consider a range of alternative solutions to his particular problem(s) within a relatively short time span. The identification of support unit interdependencies, together with the analytic means for automatically handling those interactions and generating a "balanced" total force list in one iteration, are probably the most important features of the MODFPS.⁵

As can be seen by the system descriptions, both of these programs work on essentially the same principles. The FASTALS program has a far greater capability than the MODFPS, but it requires far more computer time and storage space. Both systems use the same theater, policy, and

⁴FOREWON, Volume I, op. cit., p. 7.

⁵Modular Force Planning System (Battalion Slice), Volume I, System Description (Bethesda, Maryland: Arthur Young and Company, March 1969), pp. 1, 17.

scenario parametric data. The data used as a basis for quantifying workloads within the scenario are generated by use of the Force Planning Information System (FPIS), as edited by the Army Staff.

The MODFPS was selected and will be used by virtue of the fact that it could be brought to Fort Leavenworth and put on the local computer. The FASTALS model was far too large to be brought here. Due to the editing required during the use of either program, the advantage of having ready access far exceeded that of the additional, but not essential, information offered by FASTALS.

Exercise Program of Analysis Development

To use the MODFPS, an exercise program of analysis (EPOA) is required. The EPOA provides necessary theater, policy, and scenario parametric data to the model.

The Threat

To assist in the formulation of the combat environment in which the type field army is to be developed, it was necessary to assess the threats which the United States faced on the international scene. An attempt was made to determine, among all potential adversaries, which posed the greatest threat that would result in the deployment of such a significant force as a field army. Review of classified threat analyses reduced the question down to those who could conceivably wage a war of that magnitude and who, by virtue of either nuclear capability or alliances, could pose an ultimate threat to the very existence of the United States. Understandably, the USSR and Red China were identified. An analysis of responses by 100 faculty and 200 students of the CGSC to

the Army War College attitude and opinion survey, Army Tasks for the Seventies, was used to differentiate which of the two nations posed the most serious threat.⁶

The survey had two questions that applied, as those queried perceived it, for the 1970's. When asked, "If the United States is involved in a major nonnuclear war in the next 10 years, the most likely principle opponent will be?", 118 responded "USSR", 119 responded "Red China", 46 "Both of the above", and 24 "Others".⁷

The opinion was then virtually split between the USSR and Red China. Only 8 percent envisioned other nation states as posing a threat.

The second related question resulted in similar results. When asked, "Using the scale below, please rate each listed country in terms of the danger it poses for the United States during the next 10 years. For example, if the Middle East represents a great danger to the security of the United States, place a '9' in the space provided.", the USSR and Red China came out equally with a perceived threat rating of "7". The Middle East received an equal rating, the Warsaw Pact a "6", and South America a "2".⁸

Due to the fact that neither of the latter three were named in a significant number of responses in the "other" category of the previous question, the USSR and Red China still remained as the most and equally significant threat to be played in the problem. Conclusive determination

⁶The survey was conducted by the US Army War College soliciting the attitudes, opinions, and reactions of officer personnel, rather than detailed analyses, on various questions regarding Army tasks for the seventies. Questions that bore on the threat, as it is perceived, are presented with a summary of the student and faculty responses at Appendix B.

⁷Ibid., p. 117.

⁸Ibid., p. 118.

had to be then related to the geographic location those surveyed perceived a conflict would take place.

Combat Environment

The elements of the combat environment in which the typical field army will be developed were also assumed on the basis of the Army War College survey. The geographical location, the level of intensity of combat, and the nuclear warfare questions were involved.

The survey indicated that the preponderance of opinion was that if the United States is involved in a major war in the next 10 years, that is one in which the survival of the United States is at stake, it would most likely take place in Europe.⁹ Only 8 percent perceived the area of conflict would be in northeast or southeast Asia, or an area where a direct conflict with Red China could occur.

Considering that the perception of the threat was previously equally divided, this response to the perceived location of the conflict gives sufficient basis for a conclusion to be drawn that Europe should be considered the theater of operations for the problem. The output of the Normal European Scenario of the FOREWON System, therefore, will be used as the basis for inputs to the MODFPS to satisfy the environmental aspects of that program and the EPOA.

The question of whether nuclear warfare should be played was a significant one. Our potential adversaries in the European theater have both tactical and strategic nuclear capabilities. Employment of either on the battlefield would thrust warfare into an entirely new perspective. Emphasis in such an environment would be placed on elimination of nuclear

⁹Ibid., p. 116.

delivery means, rather than tactical maneuver elements, as is the case in the conduct of conventional warfare. The Army War College survey contained three questions relevant to this issue.

The first solicited an opinion as to the chances that the US would be involved in a war where tactical but not strategic nuclear weapons would be used in the next 10 years. An overwhelming 80 percent perceived the probability as 10 percent or less that such an event would occur.¹⁰

This still does not rule out the possibility that the environment is perceived to be either nuclear or nonnuclear.

A second question pertaining to use of tactical nuclear weapons was posed. The question asked, essentially, that, "If war were to occur in Western Europe, what were the chances that tactical nuclear weapons would be used?" Forty-two percent of those questioned felt that odds were better than even that tactical weapons would be used. Fifty-eight percent, however, felt that odds were that they would not be used.¹¹

A third question actually helps to pinpoint the attitude of those surveyed. It asked the question that, "If West Germany was invaded by outside military forces and requested our help, what degree of assistance should be provided?" Four alternatives were presented, varying from all-out assistance, including nuclear weapons if necessary, to the option of staying out of the conflict. One hundred and forty-nine of the responses, or approximately 49 percent, selected, "Use military force to extend all needed help, but avoid use of nuclear weapons." One hundred and twenty-one persons, representing approximately 40 percent of those polled, recommended, "All necessary assistance, including use of nuclear weapons

¹⁰Ibid., p. 113.

¹¹Ibid., p. 114.

if necessary." The remaining 11 percent elected to either offer help short of military involvement or stay out of the conflict altogether. The opinion of approximately 60 percent felt that tactical nuclear weapons should not be used.¹²

This attitude, coupled with the optimism of the two previous questions on the subject, weighs heavily in determining whether to select a nonnuclear environment as an element of the total combat environment. A nonnuclear environment will be played. Nuclear delivery units and means will be played in the force development, however, as it is safe to assume that units currently stationed in Europe that have the nuclear capability will be there in the 1970's with their weapons on hand if, and when, nuclear play becomes necessary.

Therefore, the combat environment selected will be a single theater of operations in Europe, the FOREWON Normal European Scenario, in a nonnuclear environment.

Concept of Operations

As previously stated, the STO Europe of the FOREWON system will be used to provide the data by which the quantitative workloads are developed within the MODFPS. The MODFPS requires assignment of combat modules in order to initiate the force roundout sequence. Within the FOREWON system, these are provided by either allowing the ATLAS wargame to calculate required forces from scratch, considering the current or perceived threat, or accepting inherited theater assets or others that can be input into the system by the planner. The assets that the United

¹²Ibid., p. 115.

States has to apply to any given situation, such as the outbreak of a major war in Europe, are actually fairly finite, our current assets being 13 1/2 active divisions. The statistics are no secret.

The Army '75 Study, after a careful analysis of impending threats and our capability to respond, recommended that the Army adopt a field army whose maneuver elements approximate those portrayed in figure 1. This two corps, eight division force was recommended due to its flexibility. The concept will be used as a basis for the allocation of control headquarters and combat modules in this study. The force is one that could be formed under the existing 13 1/2 division force structure of the Army of the 1970's.

For play purposes, all units will be assumed available within the theater as inherited assets and at level 1, or full strength. Deployment and closure times are not elements of this particular problem, as the concern is the development of a self-sustaining force at full operational capability. Likewise, all current TOE units, as appear in the MODFPS data bank, will be considered available for assignment.

No free world support requirements will be imposed upon the FASCOM of the field army. The field army is considering operating as a subordinate tactical element of a combined force, NATO, without allied augmentation. Granted, in the event of a conflict such as is assumed in central Europe, the United States would play a tremendous role in providing the logistical support to NATO. Once a typical field army is developed, however, that workload requirement can be computed separately and allocation of combat service support units can be made to it.

No Air Force, Navy, or Marine forces will be played either, due to essentially the same rationale. If, due to interservice agreements,

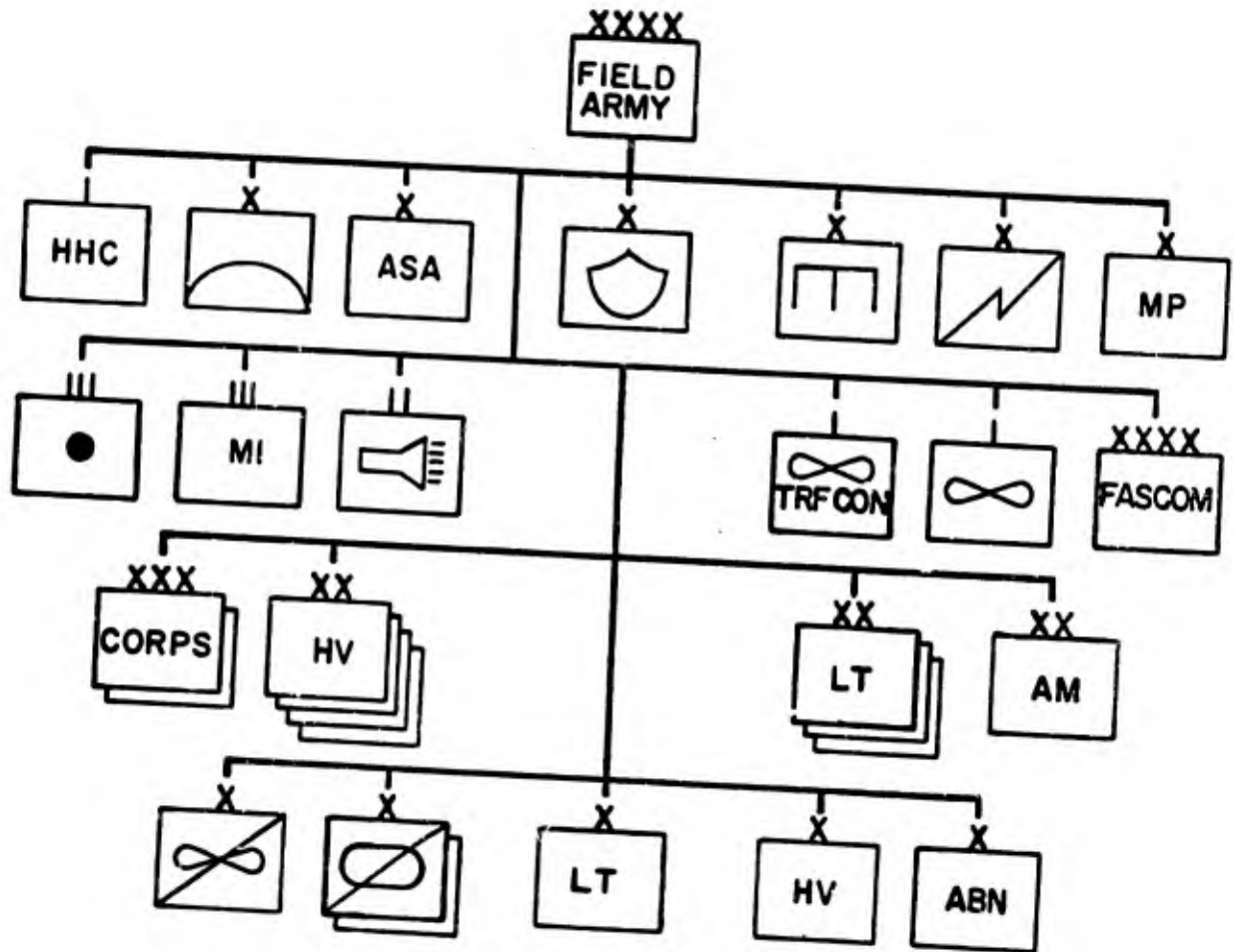


FIGURE 1
 SOURCE: USACDCICAS ARMY '75, VOL I, FIG 3-30, P. 3-89

these services require combat service or combat service support, the planner can again estimate that workload and allocate additional units to the field army to satisfy it.

A combat posture, one of six (defend, delay, attack, pursuit, reserve, or inactive) had to be selected, as logistic consumption data varies according to it. In keeping with the spirit of offensive operations and, considering that the force should be structured to be capable of operating at the maximum level of consumption of supplies, an attack posture will be used. Accordingly, air superiority is assumed, in that without it an attack is not feasible.

Insurgency will not be played. No restrictions will be made to transportation operations during day or night.

Mid-intensity combat will be played. This is selected, rather than one of the extremes, knowing that it is easier for a staff officer, knowledgeable of his own tactical situation, to estimate from a mean or average level of combat rather than either a heavy or inactive one.

Logistics Policies

A COMMZ will be established in the theater where normal storage and maintenance functions will be performed. No other bases outside of the theater will be assumed available for use, CONUS excepted. The Normal European Scenario will be used to play the availability of facility assets within the theater. Medical supply and signal support are to be provided only to US Army elements in the determination of those workloads. Direct and general support maintenance will be played as performed in the theater.

Construction, supply, transportation, storage, and personnel

replacement policies and requirements will be played by use of the FOREWON Normal European Scenario. Additionally, the scenario will be used to play handling of POW's, policy on US prisoners, availability of confinement facilities in-country, refugee control, rear area security, and availability and use of indigenous labor. A summary of the parametric data used is presented in Chapter III. The source cutoff date for unit TOE data is the current special requirements code (SRC) file within the MODFPS data bank.

Summary

The MODFPS is a living model, in the sense that it is currently solving similar problems of smaller magnitude for the Army Staff. The credibility of any force developed through the use of the program must bear the caveat of acceptance of the data base and the adequacy of the very system itself. The assumption is made that the MODFPS and inputs to it from the FOREWON system are valid as stated in the paper. The credibility of the force designed through their use is directly contingent upon them.

Chapter III

EXERCISE PROGRAM OF ANALYSIS

General

The MODFPS is a theater-dependent computer model. Therefore, the inputs to it had to contain data resultant from an analysis of certain relatively fixed requirements from the FASTALS Normal European Scenario, as well as force description information.

Force Description

Inputs to the MODFPS included a combat unit and tactical headquarters structure (figure 2). Units included in the MODFPS data bank at the time of input are listed by their program identity (DTM) number at Appendix A.

Operational Data

An attack posture was specified for the combat modules (table 1).

Logistics Network Data

The European scenario provided estimates of general characteristics of the transportation network used in the calculation of inter and intratheater requirements for resupply of general cargo (including ammunition), refrigerated cargo, and bulk POL. These estimates were used as a basis for determining the routing of supplies into and throughout the theater and the mode by which they would be transported. These

NO. DTM	TACTICAL HQ	MOD	NUMBER OF DIVISIONS EMPLOYED			NUMBER OF SEPARATE BRIGADES EMPLOYED			CORPS	FIELD ARMY		
			MECH DIV	AIR-MBL	ARMED DIV	MECH INF	AIR-BRNE	ARMED BDE			LT INF	ARMED CAV REGT
1	902	41	18	0	20	2	0	1	0	0	0	0
2	903	3	0	0	0	0	0	0	0	0	0	0
3	904	9	0	9	0	0	0	0	0	0	0	0
4	905	41	12	0	24	2	0	3	0	0	0	0
5	906	7	3	0	4	0	0	0	0	0	0	0
6	907	1	0	1	0	0	0	0	0	0	0	0
7	909	2	0	0	0	1	0	1	0	0	0	0
8	911	1	0	0	0	0	0	0	0	0	0	0
9	912	6	0	0	0	0	0	0	0	6	0	0
10	913	2	0	0	0	0	0	0	0	2	0	0
11	915	4	0	3	0	0	0	0	0	0	0	0
12	917	1	0	0	0	0	0	0	1	0	0	0
13	919	21	9	0	12	0	0	0	0	0	0	0
14	920	2	0	0	0	1	0	1	0	0	0	0
15	922	7	3	0	4	0	0	0	0	0	0	0
16	923	1	0	1	0	0	0	0	0	0	0	0
17	924	12	3	0	4	0	0	0	0	0	0	0
18	925	5	0	0	0	0	0	0	0	0	0	0
19	927	4	0	0	0	0	0	0	0	0	0	0
20	928	8	0	0	0	0	0	0	0	0	0	0
21	929	12	0	0	0	0	0	0	0	0	0	0
22	930	8	0	0	0	0	0	0	0	0	0	0
23	931	4	0	0	0	0	0	0	0	0	0	0
24	933	2	0	0	0	0	0	0	0	0	0	0
25	934	1	0	0	0	0	0	0	0	0	0	0
26	936	8	0	0	0	0	0	0	0	0	0	0
27	937	4	0	0	0	0	0	0	0	0	0	0
28	938	7	3	0	4	0	0	0	0	0	0	0
29	940	3	0	0	0	0	0	0	0	0	0	0

FIGURE 2

Table 1. Operational Data

Number	DTM	Module Name	Number in Attack
1	902	INF BN (MECH)	41
2	903	INF BN (ABN)	3
3	904	INF BN (AMBL)	9
4	905	TK BN	41
5	906	CAV SQDN	7
6	907	CAV SQDN (AMBL)	1
7	909	CAV TRP	2
8	911	CAV TRP	1
9	912	ARMORED CAV SQDN	6
10	913	AIR CAV TRP	2
11	915	FA BN 105 TOW	4
12	917	FA BN 105 TOW	1
13	919	FA BN 155 SP	21
14	920	FA BN 155 SP	2
15	922	FA BN HJ	7
16	923	ADA BN VUL TOW	4
17	924	ADA BN C/V SP	7
18	925	ADA BN HAWK TOW	7
19	927	FA BN 155 TOW	4
20	928	FA BN 155 SP	8
21	929	FA BN 8 IN SP	12
22	930	FA BN 175 SP	8
23	931	FA BN HJ	4
24	933	SGT BN	2
25	934	PERSHING BN	1
26	936	ADA BN	8
27	937	HERC BN	5
28	938	FA BN 8 IN SP	7
29	940	CAV SQDN	3

estimates provided a basis by which handling and movement requirements were calculated.

Table 2. Transportation Network Characteristics

Facility	Number	Location
PORT (Intertheater)	8	COMMZ
AIRFIELD (Intertheater)	5	COMMZ
AIRFIELD (Intertheater)	3	CORPS/DIVISION
TRANSFER POINTS (Intratheater)	5	COMMZ
TRANSFER POINTS (Intratheater)	4	FA SVC AREA
SUPPLY POINTS	4	CORPS/DIVISION

Selected Consumption Data

The following were used as a basis for consumption for all classes of supply.¹

¹It is necessary to point out here that the MODFPS still operates on the basis of the original five classes of supply. This really is of little consequence, as the total requirement for supplies does not change with the reclassification of commodities. Development of the new classes, VI through X, was done for fiscal accounting purposes. The same TOE units handle the same commodities. The sum total of demands remains unchanged. This view was expressed in a letter, HQ USACDC Supply Agency, dated 24 April 1970, subject: Letter of Transmittal, To: CGUSACDCICAS.

Table 3. Selected Consumption Data

POL Input Data

COMMZ - 3 days

Field Army Service Area - 5 days

Average Miles Per Day by Vehicle Type and Location

	<u>Division</u>	<u>Corps</u>	<u>Field Army</u>	<u>COMMZ</u>
Wheeled	50	50	50	50
Tracked	25	25	25	25

Aircraft POL Parameters

	<u>OH6</u>	<u>UH1</u>	<u>AH56</u>	<u>CH47</u>	<u>CH54</u>	<u>OV1</u>	<u>U21/U8</u>
Flying Hrs/Mo	60	70	70	55	50	75	75 70
Gals/Flying Hr	22	85	172	280	446	126	35 85

Fixed Storage Available in Field Army

None available.

POL Truck Units Will Be Tied (Piggy-backed) as Follows:

<u>Location</u>	<u>Unit (DTM)</u>	<u>Tied To (DTM)</u>
Corps/Division	740	987
Corps/Division	730	987
Field Army Service Area	740	988
Field Army Service Area	730	988
COMMZ	740	971
COMMZ	730	971

Table 3 (continued)

Theater Consumption Data (Lbs/Man/Day)

	<u>Tied To:</u>	<u>CLI</u>	<u>CLI(R)</u>	<u>CLII</u>	<u>CLIII</u>	<u>CLIV</u>	<u>CLV</u>
Forward Troops	964	4.9	1.5	18.85	4.5	4.11	0.6
COMMZ Troops	965	4.9	1.5	21.14	5.4	4.11	0.6

Theater Storage Levels

Current = 90 days

Desired = 45 days

Available = 120 days

Engineer Workload Information

Inputs to the engineer subroutines of the MODFPS were among the most complex of those in the program. They were based primarily on the analysis of the area of operations and the wargame product of the Normal European Scenario. Estimates produced as a result of the run of that scenario were used to generate workload requirements in terms of man-hours required of engineer units available within the data bank. Allocation could then be made by a simple division of the appropriate unit capability into the particular requirement to derive numbers of engineer units. This portion of the engineer force was then provided to the MODFPS as an input during force roundout. The engineer program output man-hour summary by tasks is as follows.

Table 4. Engineer Program Summary

Engineer Unit Capability (Man-hours)Construction and combat engineer battalions.

<u>Construction</u>	<u>Combat</u>
100,000	100,000

Mobile assault bridge (MAB) company.

Feet of MAB avail/co = 698

Panel bridge company.

Man-hours of installation/maintenance effort/month: 2300

Hours of hauling per month: 136

Hours of load/unload per trip: 8

Port construction company.

37,000 man-hours/month

General Theater DataTerrain breakdown.

<u>Type</u>	<u>Percent of Total</u>
Flat	5%
Rolling	45%
Hilly	45%
Mountainous	<u>5%</u>
Total	100%

Vegetation distribution.

Savanna	80%
Woodland	<u>20%</u>
Total	100%

Table 4 (continued)

Combat Engineering Summary (Man-hours) (Per 30 Days)

<u>Task</u>	<u>Build & Rehab</u>	<u>Maintain</u>	<u>Damage Repair</u>
Combat Roads	388,722.0	0.0	20,107.8
Noncombat Roads	0.0	0.0	242,100.2
Rail Lines	0.0	0.0	0.0
Railroad Bridges	0.0	0.0	0.0
Retard + Def Bar	948,382.2	0.0	0.0
Hasty + Delib FF	466,095.9	0.0	0.0
Obst Red/Demo	0.0	0.0	0.0
Army Airfields	100,200.0	4,364.0	38,196.0
Air Force Airfields	0.0	0.0	0.0
Panel Bridges	32,188.0	10,319.7	6,313.2
Timber Bridges	0.0	0.0	15,893.0
Pipelines	0.0	0.0	0.0
Ports	<u>0.0</u>	<u>0.0</u>	<u>0.0</u>
Totals	1,935,588.1	14,683.7	322,610.1

Construction Engineering Summary (Man-hours) (Per 30 Days)

<u>Task</u>	<u>Build & Rehab</u>	<u>Maintain</u>	<u>Damage Repair</u>
Combat Roads	0.0	0.0	6,207.6
Noncombat Roads	0.0	0.0	80,700.1
Rail Lines	0.0	0.0	232,102.0
Railroad Bridges	0.0	0.0	98.8
Retard + Def Bar	0.0	0.0	0.0
Hasty + Delib FF	0.0	0.0	0.0

Table 4 (continued)

<u>Task</u>	<u>Build & Rehab</u>	<u>Maintain</u>	<u>Damage Repair</u>
Obst Red/Demo	0.0	0.0	0.0
Army Airfields	0.0	0.0	0.0
Air Force Airfields	0.0	0.0	727,755.0
Panel Bridges	0.0	0.0	0.0
Timber Bridges	0.0	10.3	10,595.3
Pipelines	0.0	0.0	208,907.0
Ports	<u>212,925.0</u>	<u>0.0</u>	<u>15,973.4</u>
Totals	212,925.0	10.3	1,282,834.2

Total Workload Breakdown by Percent

	<u>Combat</u>	<u>Construction</u>
Build and Rehab	85.2	14.2
Maintain	0.6	0.0
Damage Repair	<u>14.2</u>	<u>85.8</u>
	100.0%	100.0%

Initial Engineer Unit Inputs

Construction Engineer Battalions	7.680
Combat Engineer Battalions	18.730
Panel Bridge Companies	4.327
Mobile Assault Bridge Companies	2.000
Pipeline Construction Support Companies	0.116
Port Construction Companies	1.092

Medical Program Data

Data provided as input to the medical subroutine were used as a basis for calculating the fixed bed requirements by hospital type in the theater.

Table 5. Medical Program Data

Inputs

Evacuation policy. 15 days

Period of estimate. 60 days

Daily admission rate.

<u>Unit</u>	<u>WIA</u>	<u>DNBI</u>
Division	2.3000	2.2900
Corps/FA	.6800	1.7200
COMMZ	.1400	1.7200

Dispersion factor. 0.2 percent

Disposition of patients by hospital.

General Hospital, 1,000 Bed = 75.0%

Station Hospital, 500 Bed = 14.5%
COMMZ

Station Hospital, 300 Bed = 10.5%
100.0%

Basic Medical Planning Factors

Accumulation factors.

<u>WIA</u>	<u>DNBI</u>
10.8	7.32

Table 5 (continued)

<u>Divisional casualty rates.</u> (60 days as percentage of total strength)	
Infantry Battalions	0.00011
Mechanized Infantry	0.00008
Tank Battalions	0.00004
Armored Cavalry Squadrons	0.00006
Artillery	0.00003
Engineer Base	0.00004
Division Base	0.00002

Military Police Subroutine

Data was provided to the Military Police subroutine to generate coefficients for two units dependent on prisoner of war and confinement rate data inputs.

Table 6. Military Police Program Data

<u>Total Number of PW and Civilian Internees.</u>	620 (1 day)
<u>Percent of Population in Stockade/Rehab.</u>	0.00496

Chapter IV

THE FIELD ARMY

General

The theater force developed by the use of the parametric data presented in Chapter III, rounded out at a total strength of 696,796 troops, distributed from the division areas through the COMMZ. The strength totals included all of the units required to support the field army within the theater. To separate the units of the field army from the total force generated by the MODFPS program, the basis of allocation for each individual unit had to be examined.

Command and Control Units

The model was given the requirement for a field army consisting of two corps, with command and control headquarters as shown in figure 3. A field army support command (FASCOM) was generated to provide command and control of the combat service support function. One corps support brigade was provided for each of the two corps; each headquarters commanding two corps support groups. An army support brigade headquarters, commanding two subordinate army support groups, was assigned to support the corps support brigades and the field army service area. This command structure is considered adequate to direct and supervise the execution of the combat, combat support, and combat service support functions of the field army.

COMMAND & CONTROL UNITS

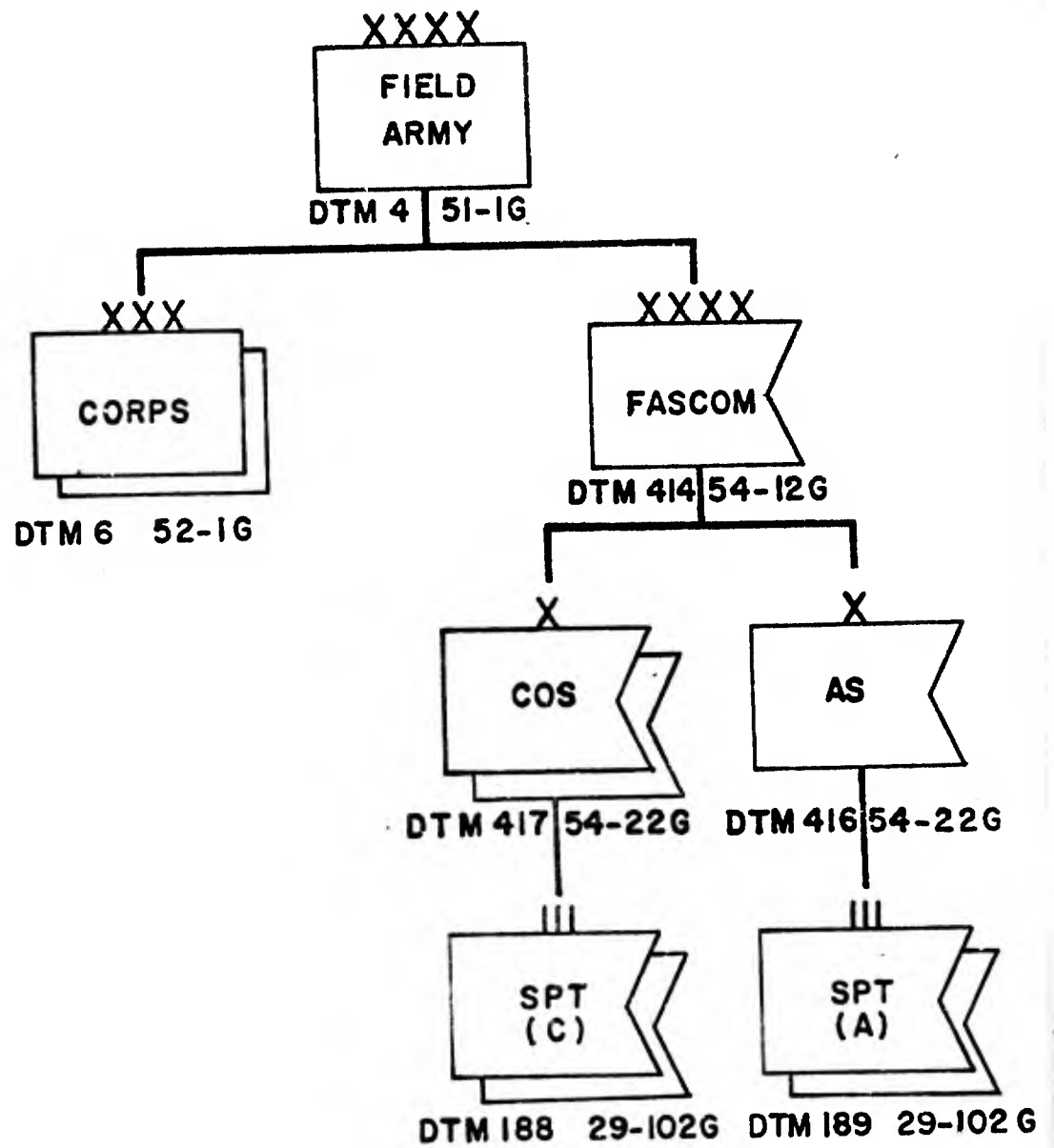


FIGURE 3

Basis of Assignment

Table 7. Command and Control Headquarters Allocations

<u>DTM</u>	<u>UNIT</u>	<u>TOE</u>	<u>STR</u>	<u>BASIS*</u>	<u>NUMBER</u>	<u>TOTAL</u>
4	HHC ARMY	51-1G	697	1/4	1	697
6	HHC CORPS	52-1G	256	1/6	2	512
414	HQ & SP TRP FASCOM	54-12G	427	1/4	1	427
416	HHC SPT BDE (A)	54-22G	255	1/414	1	255
417	HHC SPT BDE (C)	54-22G	272	2/414	2	544
189	HHC SPT GP (A)	29-102G	175	2/416	2	350
188	HHC SPT GP (C)	29-102G	142	2/417	4	568
						<u>3,353</u>

*Per DTM as indicated.

Combat Units

The combat units played are shown in figure 4. All but seven were given to the MODFPS model. The two long range patrol infantry companies, TOE 7-157G, were generated on the basis of one per corps headquarters. The five airborne pathfinder teams were assigned to support each of the five battalions of the separate airborne brigade. All units were played at the TOE strengths as shown. The conceptual separate air cavalry brigade was formed as shown in figure 5. To provide sufficient command and control as an independent unit, the headquarters of a separate light infantry brigade, DTM 5, TOE 77-102H, was called to generate appropriate CSS capabilities. No special forces were deployed within the model.

COMBAT UNITS

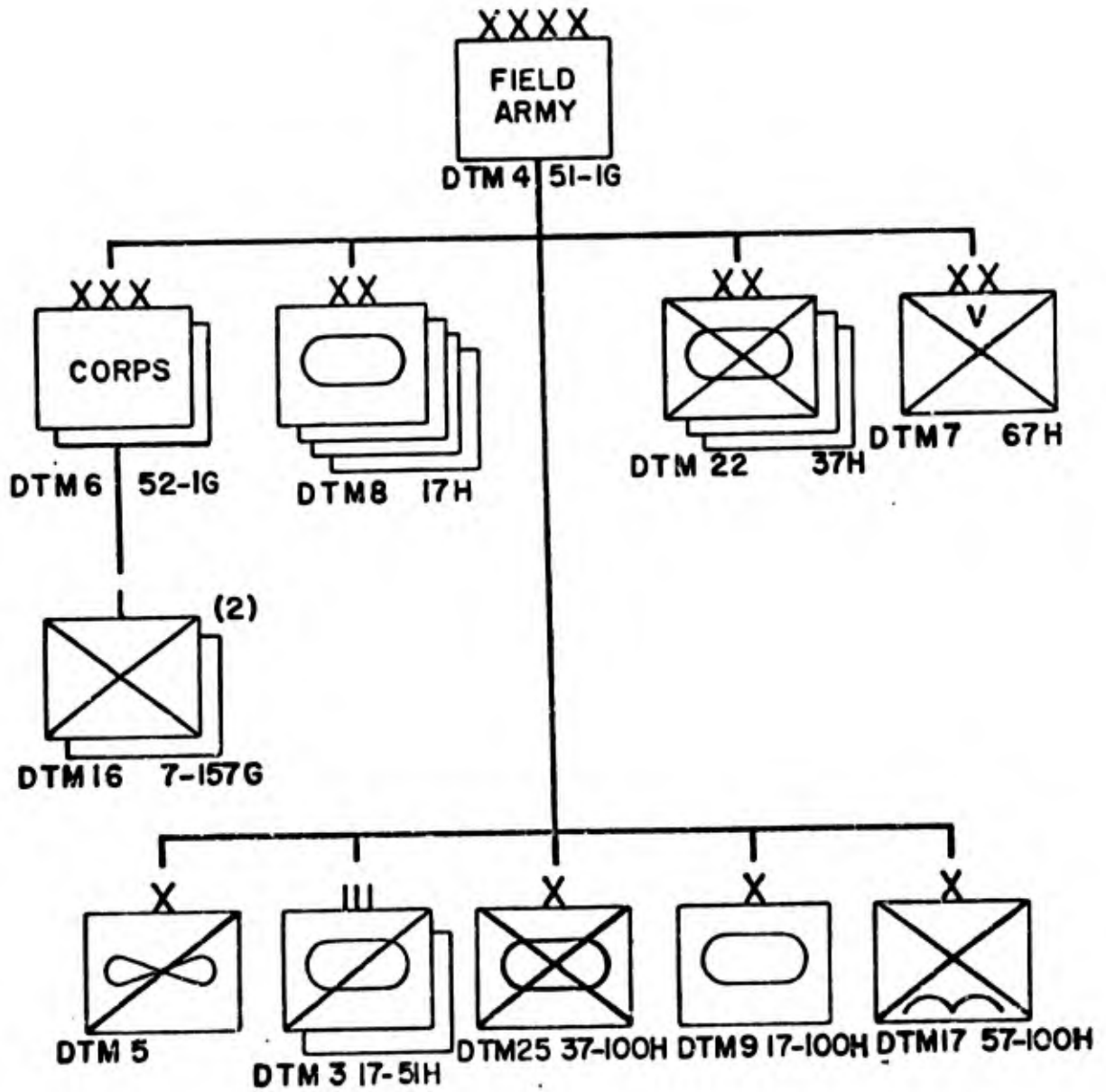


FIGURE 4

SEPARATE AIR CAVALRY BRIGADE (CONCEPTUAL)

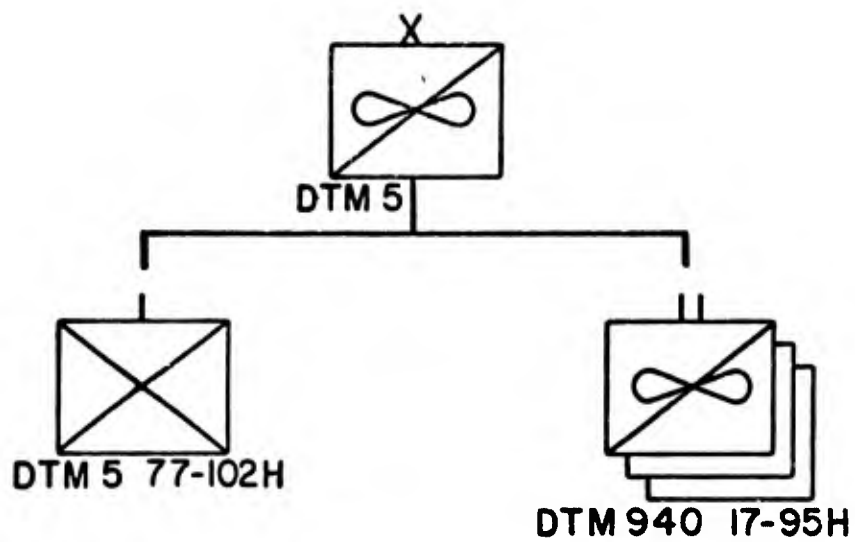


FIGURE 5

Table 8 (continued)

<u>DTM</u>	<u>UNIT</u>	<u>TOE</u>	<u>STR</u>	<u>BASIS</u>	<u>NUMBER</u>	<u>TOTAL</u>
<u>AIRBORNE INFANTRY BRIGADE (SEP)</u>						
17	HHC BDE ABN SEP	57-102H	257	1/17	1	257
903	INF BN ABN	7-35H	786	5/17	5	3,930
911	CAV TRP ABN	17-127H	146	1/17	1	146
						4,333
<u>AIR CAVALRY BRIGADE (SEP)</u>						
5	HHC LT INF BDE	77-102H	255	1/5	1	255
940	CAV SQDN AMBL	17-95T	966	3/5	3	2,898
						3,153
<u>ARMORED CAVALRY REGIMENT</u>						
3	HHT ARMD CAV REGT	17-52H	225	1/3	2	450
912	ARMD CAV SQDN	17-55H	951	3/3	6	5,706
913	AIR CAV TRP	17-58H	182	1/3	2	364
						6,520
<u>OTHER</u>						
16	IN CO LONG RANGE PLT	7-157G	216	1/6	2	432
143	TM PATHFINDER ABN (FA)	7-500G	6	1/903	3	18
						450
					TOTAL	93,445

Combat Support UnitsField Artillery

Divisional artillery. All divisional artillery units were generated on the basis of H-series TOE organization. They were input to the MODFPS as combat modules.

Basis of Assignment

Table 9. Divisional Field Artillery Unit Allocations

<u>DTM</u>	<u>UNIT</u>	<u>TOE</u>	<u>STR</u>	<u>BASIS</u>	<u>NUMBER</u>	<u>TOTAL</u>
<u>ARMORED DIVISION ARTILLERY</u>						
26	HHB DIVARTY	6-302H	227	1/8	4	908
919	FA BN 155 SP	6-365H	583	3/8	12	6,996
938	FA BN 8 IN SP	6-395H	529	1/8	4	2,116
922	FA BN HJ	6-100H	263	1/8	4	<u>1,052</u>
						11,072
<u>MECHANIZED INFANTRY DIVISION ARTILLERY</u>						
26	HHB DIVARTY	6-302H	227	1/22	3	681
919	FA BN 155 SP	6-365H	583	3/22	9	5,247
938	FA BN 8 IN SP	6-395H	529	1/22	3	1,587
922	FA BN HJ	6-100H	263	1/22	3	<u>789</u>
						8,304
<u>AIRMOBILE DIVISION ARTILLERY</u>						
33	HHB DIVARTY AM	6-701T	154	1/7	1	154
915	FA BN 105 TOW	6-705T	399	3/7	3	997
31	BTRY AV AM DIVARTY	6-702T	95	1/7	1	95
141	FA BN AERIAL ARTY	6-725T	402	1/7	1	<u>402</u>
						1,648
					TOTAL	21,024

Field artillery support to the separate brigades. Field artillery was assigned to the separate brigades as program input also. The artillery organic to the armored cavalry was not broken out by separate DTM.

Basis of Assignment

Table 10. Field Artillery Support to the Separate Brigades

<u>DTM</u>	<u>UNIT</u>	<u>TOE</u>	<u>STR</u>	<u>BASIS</u>	<u>NUMBER</u>	<u>TOTAL</u>
<u>ARMORED BRIGADE (SEP)</u>						
920	FA BN 155 SP	6-375G	628	1/9	1	628

Table 10 (continued)

<u>DTM</u>	<u>UNIT</u>	<u>TOE</u>	<u>STR</u>	<u>BASIS</u>	<u>NUMBER</u>	<u>TOTAL</u>
<u>MECHANIZED INFANTRY BRIGADE (SEP)</u>						
920	FA BN 155 SP	6-375G	628	1/24	1	628
<u>AIRBORNE INFANTRY BRIGADE (SEP)</u>						
917	FA BN 105 TOW	6-215H	474	1/17	1	474
<u>AIR CAVALRY BRIGADE (SEP)</u>						
915	FA BN 105 TOW	6-705T	399	1/5	1	399
						<u>2,129</u>

Corps artillery. Firing units were assigned to corps artillery by use of RB 101-1, making distribution for two, rather than three corps. Control elements were generated within the computer model on the existence of the corps headquarters and the number of field artillery battalions. The type corps artillery organization is shown in figure 6.

Basis of Assignment

Table 11. Corps Field Artillery Unit Allocations

<u>DTM</u>	<u>UNIT</u>	<u>TOE</u>	<u>STR</u>	<u>BASIS</u>	<u>NUMBER</u>	<u>TOTAL</u>
929	FA BN 8 IN SP	6-445G	564	6/6	12	6,768
927	FA BN 155 TOW	6-425G	562	2/6	4	2,248
928	FA BN 155 SP	6-455G	506	4/6	12	4,048
930	FA BN 175 SP	6-435G	550	4/6	8	4,400
931	FA BN HJ	6-525G	378	2/6	4	1,512
933	SGT BN	6-555G	377	1/6	2	754
30	HNB CORPS ARTY	6-501G	211	1/6	2	422
28	HNB ARTY GROUP	6-401G	134	3/6	6	804
32	FA BTRY SLT	6-558G	154	1/6	2	308
34	FA BN TGT ACQN	6-575G	768	1/6	2	1,536
						<u>22,800</u>

CORPS ARTILLERY ORGANIZATION

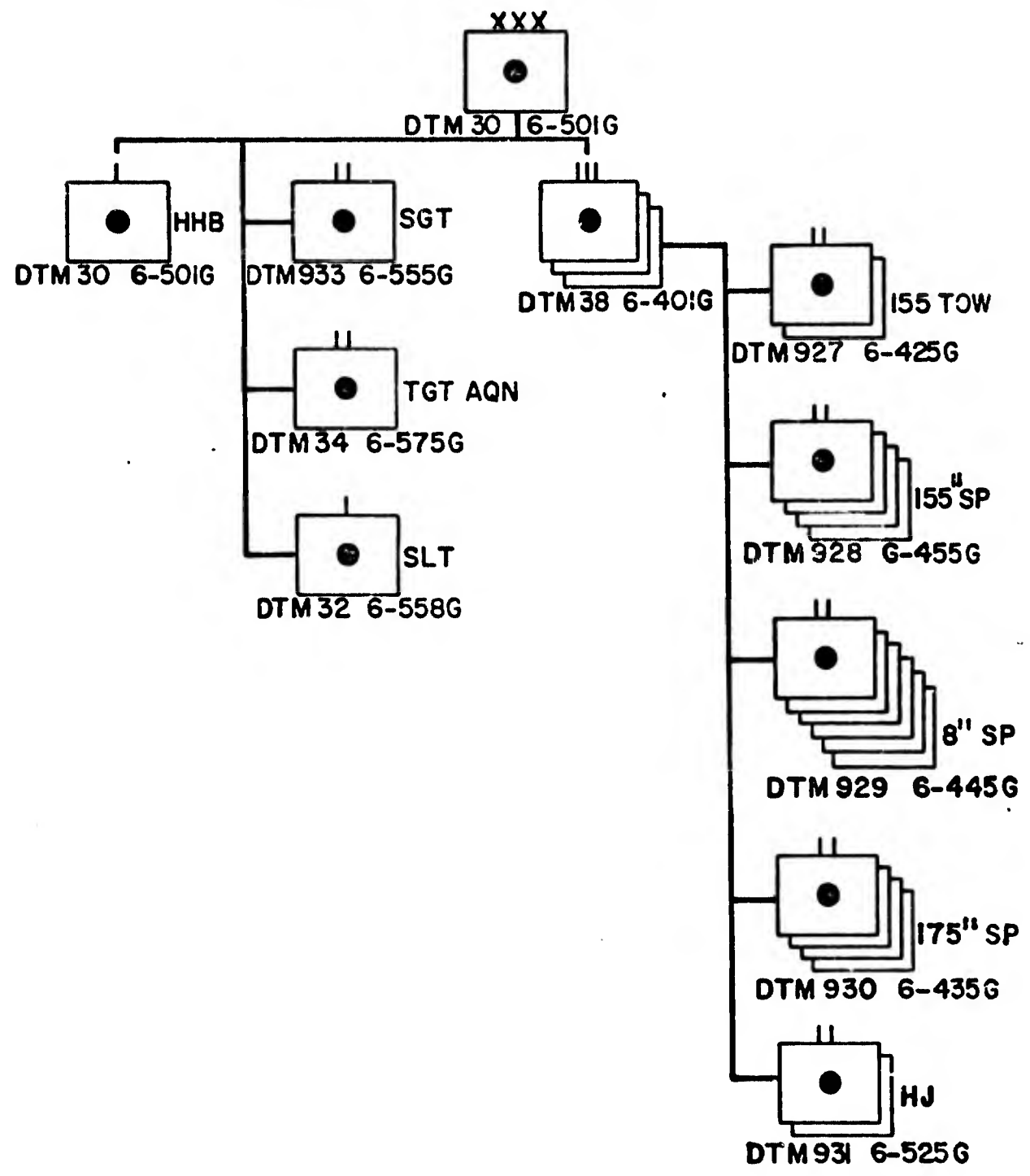


FIGURE 6

Army field artillery. The Pershing battalion, TOE 6-615G, was the only field artillery assigned to the field army.

Basis of Assignment

Table 12. Field Army Field Artillery Allocations

<u>DTM</u>	<u>UNIT</u>	<u>TOE</u>	<u>STR</u>	<u>BASIS</u>	<u>NUMBER</u>	<u>TOTAL</u>
934	PERSHING BN	6-615G	1,680	1/4	1	1,680
					FA TOTAL	47,633

Air Defense Artillery

Air defense artillery was assigned to divisional units on the basis of TOE allocations.

Basis of Assignment

Table 13. Divisional Air Defense Unit Allocations

<u>DTM</u>	<u>UNIT</u>	<u>TOE</u>	<u>STR</u>	<u>BASIS</u>	<u>NUMBER</u>	<u>TOTAL</u>
<u>ARMORED DIVISION</u>						
924	ADA BN C/V SP	44-325H	558	1/8	4	2,232
<u>MECHANIZED INFANTRY DIVISION</u>						
924	ADA BN C/V SP	44-325H	558	1/22	3	1,674
<u>AIRMOBILE DIVISION</u>						
923	ADA BN VUL TOW	44-435H	443	1/7	1	443
						4,349

ADA was not assigned to the corps or the separate brigades. An air defense brigade was formed under the field army and organized as shown in figure 7. The brigade and group headquarters were based on

ADA BRIGADE ORGANIZATION

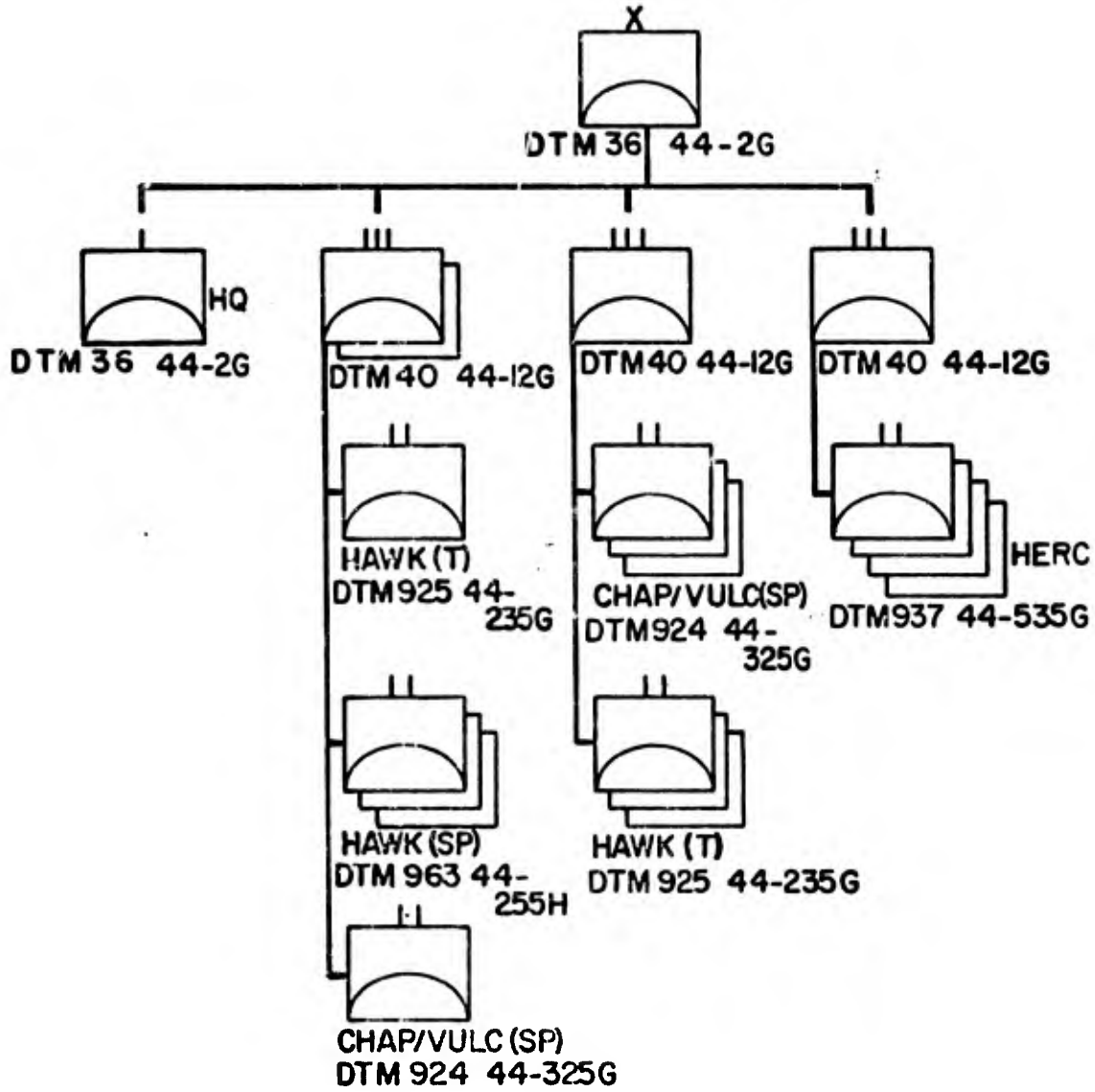


FIGURE 7

RB 101-1, but adjusted to compensate for one less corps. This resulted in the deletion of one of the ADA groups that would normally provide support to the third corps.

Basis of Assignment

Table 14. Field Army Air Defense Artillery Brigade Unit Allocations

<u>DTM</u>	<u>UNIT</u>	<u>TOE</u>	<u>STR</u>	<u>BASIS</u>	<u>NUMBER</u>	<u>TOTAL</u>
36	HHB ADA BDE	44-2G	87	1/4	1	87
40	HHB AD GROUP	44-12G	85	4/36	4	340
924	ADA BN C/V SP	44-325H	558	5/36	5	2,790
925	ADA BN HAWK TOW	44-235G	799	5/36	5	3,995
936	ADA BN HAWK SP	44-255H	748	6/36	6	4,488
937	HERC BN	44-535G	910	4/36	4	3,640
						<u>15,340</u>
				AD TOTAL		19,689

Aviation

Aviation units were allocated on the basis of the existence rule within the MODFPS model and appear in the divisional, corps, and army organizations.

Divisional aviation. The aviation companies of the armored and mechanized divisions were assigned according to the H-series TOE's for the divisions. The aviation group of the airmobile division was assigned to it with its two organic assault helicopter battalions, TOE 1-155T; assault helicopter company, TOE 1-16T; and general support aviation company, TOE 1-102T.

Basis of Assignment

Table 15. Divisional Aviation Unit Allocations

<u>DTM</u>	<u>UNIT</u>	<u>TOE</u>	<u>STR</u>	<u>BASIS</u>	<u>NUMBER</u>	<u>TOTAL</u>
<u>ARMORED DIVISION</u>						
130	AV CO ARMD DIV	17-87H	101	1/8	4	404
<u>MECHANIZED INFANTRY DIVISION</u>						
131	AV CO MECH DIV	37-87H	101	1/22	3	303
<u>AIRMOBILE DIVISION</u>						
139	HHC AV GROUP	1-101T	223	1/7	1	223
121	BN ASLT HEL	1-155T	527	2/7	2	1,054
125	ASLT SPT HEL CO	1-165T	521	1/7	1	521
153	GS AV CO	1-102T	194	1/7	1	194
						2,699

Corps aviation. Each corps was assigned one aviation group, structured as shown in figure 8.

Basis of Assignment

Table 16. Corps Aviation Unit Allocations

<u>DTM</u>	<u>UNIT</u>	<u>TOE</u>	<u>STR</u>	<u>BASIS</u>	<u>NUMBER</u>	<u>TOTAL</u>
140	HHC AV GROUP	1-252G	78	1/6	2	156
132	AV CO CORPS	1-127G	121	1/6	2	242
134	SURVL AIRPLANE CO	1-128G	221	1/6	2	442
142	AV HHC BN	1-256G	85	2/6	4	340
144	ASLT SPT HEL CO	1-258H	198	4/6	8	1,584
123	ASLT HEL CO	1-357H	214	4/6	8	1,712
127	ATK HEL CO	17-111H	210	2/6	4	840
						5,316

FASCOM aviation. FASCOM aviation assets were assigned to the transportation brigade, using paragraph 4-18b, Final Draft Manuscript,

CORPS AVIATION GROUP

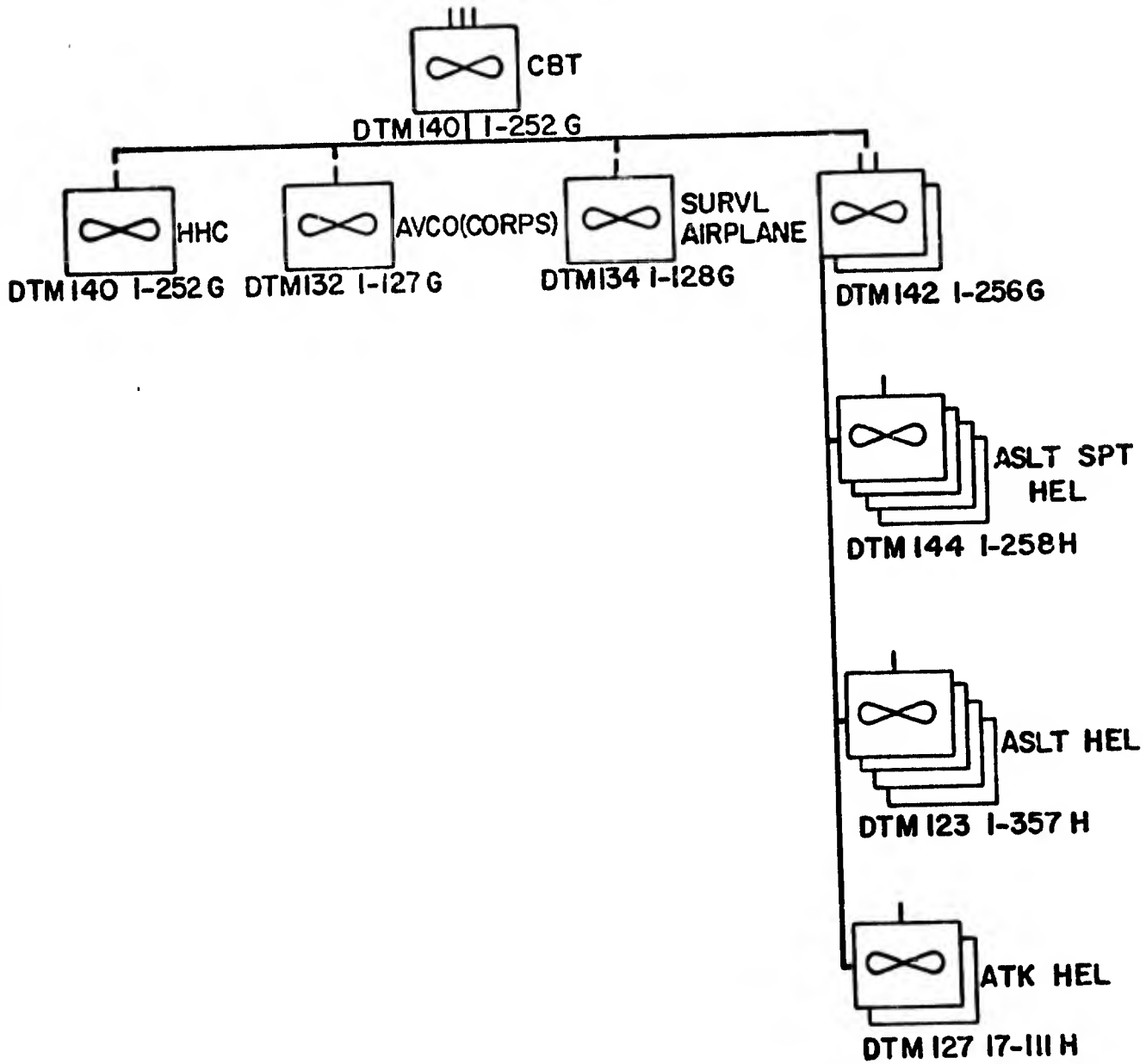


FIGURE 8

FM 54-3, The Field Army Support Command, HQ USACDCCONFOR, November 1971, as a basis. The organization is shown in figure 9.

Basis of Assignment

Table 17. FASCOM Aviation Unit Allocations

<u>DTM</u>	<u>UNIT</u>	<u>TOE</u>	<u>STR</u>	<u>BASIS</u>	<u>NUMBER</u>	<u>TOTAL</u>
142	AV HHC BN	1-256G	85	1/414	1	85
	AV SVC SPT CO	1-407G	165	1/414	1	165
144	ASLT SPT HEL CO	1-258H	198	3/142	3	594
146	HVY HEL CO	55-259H	164	1/414	1	164
						<u>1,008</u>

Field army aviation. Only two aviation units were assigned under field army control. They were one army aviation company, TOE 1-137G, and an air traffic control company, TOE 1-207G.

Basis of Assignment

Table 18. Field Army Aviation Unit Allocations

<u>DTM</u>	<u>UNIT</u>	<u>TOE</u>	<u>STR</u>	<u>BASIS</u>	<u>NUMBER</u>	<u>TOTAL</u>
136	AV CO ARMY	1-137G	144	1/4	1	144
138	AV CO AIR TRF CON	1-207G	340	1/4	1	<u>340</u>
						484
					AV TOTAL	9,507

Chemical Units

A chemical group, TOE 3-32G, was generated for assignment to field army control due to the number of companies required to support the combat divisions. The organization of the chemical group is shown in figure 10. The chemical units assigned to the field army would all

FASCOM AVIATION BATTALION

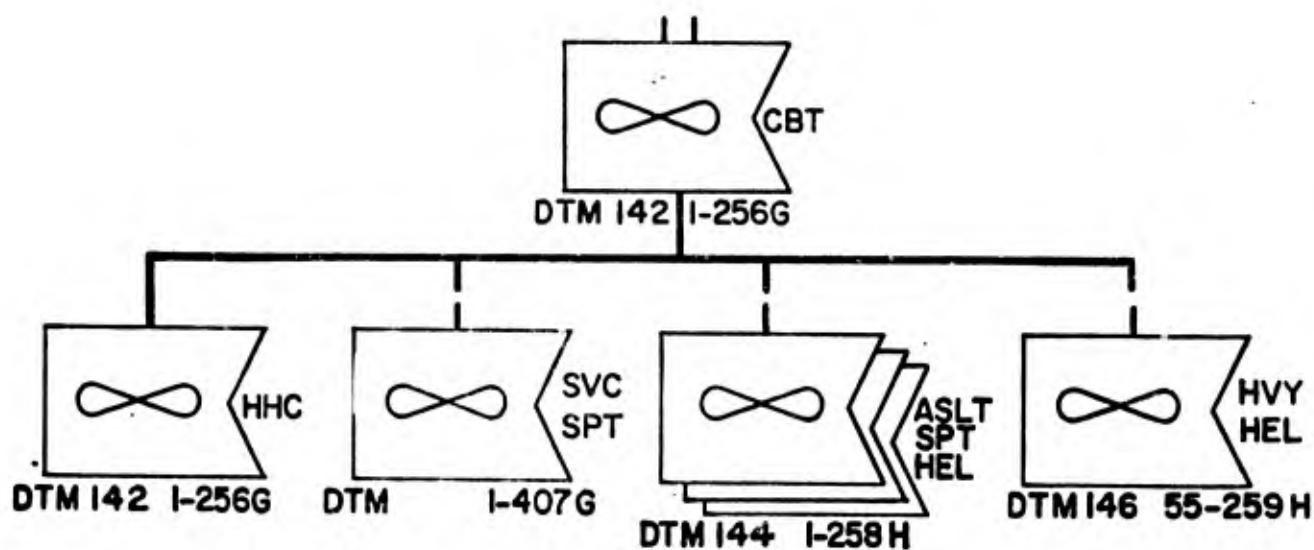
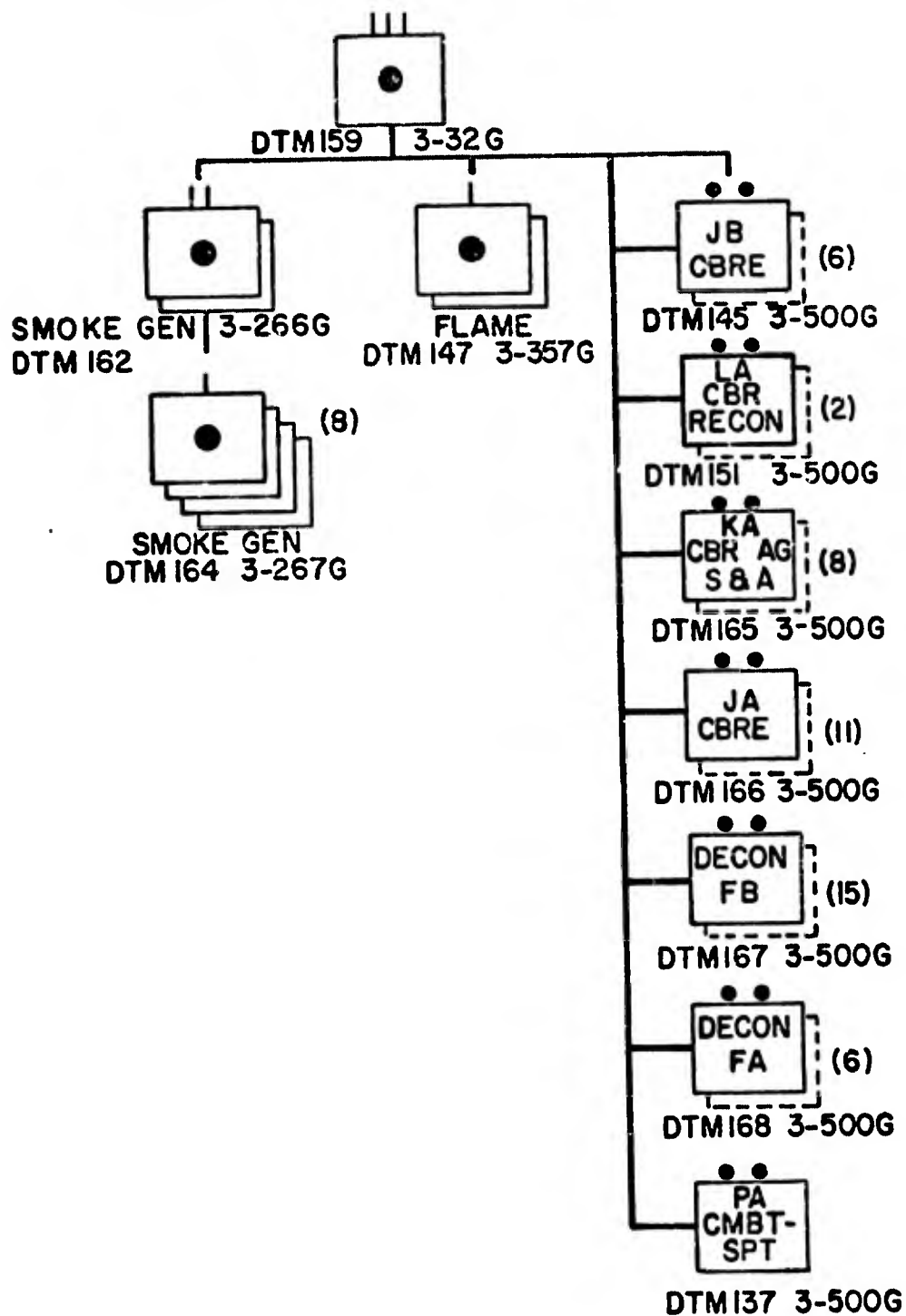


FIGURE 9

CHEMICAL GROUP, FIELD ARMY



() = INDICATES TOTAL NR. UNITS IN FIELD ARMY

FIGURE 10

be organic to this group. They would be attached to the divisions, separate brigades, or other units as the situation would dictate. The basis of allocation for these units is presented in such a manner so as to indicate the requirement for the unit.

Basis of Assignment

Table 19. Chemical Unit Allocations

<u>DTM</u>	<u>UNIT</u>	<u>TOE</u>	<u>STR</u>	<u>BASIS</u>	<u>NUMBER</u>	<u>TOTAL</u>
<u>DIVISION SUPPORT</u>						
164	CM CO SMOKE GEN	3-267G	145	1/7,8,22	8	1,160
165	TM KA CBR AGNT	3-500G(SA)	2	1/7,8,22	8	16
166	DET JA CBRE	3-500G(JA)	5	1/7,8,22	8	40
167	DET DECON FB	3-500G(FB)	41	1/8,22	7	287
137	TM PA CMBT SPT	3-500G(PA)	57	1/7	1	57
<u>CORPS SUPPORT</u>						
147	CM CO MECH FLAME	3-357G	170	1/6	2	340
166	DET JA CBRE	3-500G(JA)	5	1/6	2	10
<u>SEPARATE BRIGADE SUPPORT</u>						
145	CM TM JB CBRE	3-500G(JB)	10	1/3,5,9,17,25	6	60
168	DET DECON FA	3-500G(FA)	22	1/3,5,9,17,25	6	132
<u>ARMORED CAVALRY REGIMENT SUPPORT</u>						
151	CM TM LA CBR RECON	3-500G(LA)	5	1/3	2	10
<u>FASCOM SUPPORT</u>						
167	DET DECON FB	3-500G(FB)	41	1/188,189	8	328
<u>FIELD ARMY TROOPS</u>						
159	CM HHD GROUP	3-32G	47	1/4	1	47
162	CM HHD SMOKE GN BN	3-266G	30	.25/164	2	60
166	DET JA CBRE	3-500G(JA)	5	1/4	1	5
						<u>2,552</u>

Civil Affairs (CA)

A civil affairs brigade headquarters was assigned to the field army as a major headquarters under army troops.

The organization of the brigade is based on the latest civil affairs doctrine developed for use in the CDC Conceptual Army of the Future.¹ A civil affairs brigade, TOE 41-201G, was developed for that study to support a 4 1/3 division force equivalent (DFE). The troop list of the brigade was analyzed and modified to support a force twice as large, such as was played in the problem at hand.

The brigade is set forth in figure 11. The corps support battalions, consisting of a variable number of civil affairs companies, do not have fixed strengths or organizations. Normally, one company would support a division and would consist of an appropriate mix of the teams as shown in table 20. The composition of the field army service area support battalion reflects the same flexibility. The teams organic to it could be assigned to any of the six subordinate companies according to the requirements of the locale.

Basis of Allocation

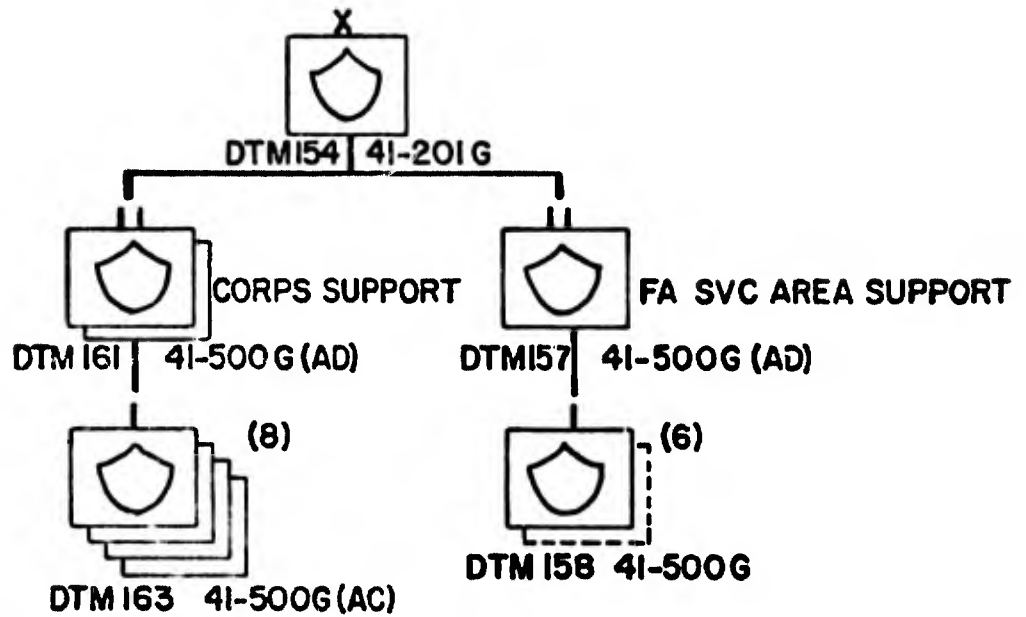
See table 20.

Engineer

Engineer troops were allocated within all echelons of the field army by both the existence rule and a parametric routine. It is significant to note that only the combat engineering capability was allocated

¹USACDC Study, Echelons Above The Division (U), ACN 16863 (Headquarters, USACDC Institute of Combined Arms and Support, January 1970), Annex K.

CIVIL AFFAIRS BRIGADE



NOTE: NUMBER IN () IS FIELD ARMY TOTAL

FIGURE II

Table 20. Civil Affairs Unit Allocations

<u>DTM</u>	<u>UNIT</u>	<u>TOE</u>	<u>STR</u>	<u>BASIS</u>	<u>NUMBER</u>	<u>TOTAL</u>
154	HHD CA BDE	41-201G	239	1/4	1	239
157	HHD CA BN FA SVC SPT	41-500G(AD)	46	1/4	1	46
158	CA CO FA SVC SPT	41-500G(AC)	177*	6/4	6	<u>1,060</u>
						<u>1,345</u>
*(FA SVC SPT Teams Included in DTM 158 Total)						
	TM AC, CO HQ	41-500G(AC)	24	1/158	6	(144)
	TM AB, PLT HQ	41-500G(AB)	7	4/158	24	(128)
	TM FB, CIV DEF	41-500G(FB)	5	1/4	1	(5)
	TM HB, CIV INFO	41-500G(HB)	5	1/4	1	(5)
	TM IA, CIV SUP	41-500G(IA)	4	4/158	24	(96)
	TM IB, CIV SUP	41-500G(IB)	7	1/4	1	(7)
	TM JA, DP, REFUGEE & EVAC	41-500G(JA)	3	4/158	24	(72)
	TM JB, DP, REFUGEE & EVAC	41-500G(JB)	6	1/4	1	(6)
	TM MA, LABOR	41-500G(MA)	3	4/158	24	(72)
	TM MB, LABOR	41-500G(MB)	4	1/4	1	(4)
	TM PB, PUB COMM	41-500G(PB)	5	1/4	1	(5)
	TM SA, PUB HEALTH	41-500G(SA)	5	4/158	24	(120)
	TM SB, PUB HEALTH	41-500G(SB)	8	1/4	1	(8)
	TM TA, PUB SAFETY	41-500G(TA)	3	4/158	24	(72)
	TM TB, PUB SAFETY	41-500G(TB)	5	1/4	1	(5)
	TM VA, PUB WELFARE	41-500G(VA)	3	4/158	24	(72)
	TM VB, PUB WELFARE	41-500G(VB)	4	1/4	1	(4)
	TM WB, PUB WKS/UTIL	41-500G(WB)	5	1/4	1	(5)
	TM ZA, LANG	41-500G(ZA)	5	4/158	24	(120)
	TM ZB, LANG	41-500G(ZB)	8	1/4	1	(8)
	TM GA, CIV DEF	41-500G(GA)	3	4/158	24	(72)
161	HHD CA BN CORPS SPT	41-500G(AD)	46	1/6	2	92
163	CA CO CORPS SPT	41-500G(AC)	138*	1/7,8,22 .25/5,9, 17,25	9	<u>1,242</u>
						<u>1,334</u>
*(Corps Support Teams Included in DTM 163 Total)						
	TM AC, CO HQ	41-500G(AC)	24	1/163	9	(216)
	TM GA, CIV DEF	41-500G(GA)	3	1/163	9	(27)
	TM IA, CIV SUP	41-500G(IA)	4	1/163	9	(36)
	TM VA, PUB WELFARE	41-500G(VA)	3	1/163	9	(27)
	TM AB, PLT HQ	41-500G(AB)	7	4/163	36	(252)
	TM JA, DP, REFUGEE & EVAC	41-500G(JA)	3	4/163	36	(108)
	TM MA, LABOR	41-500G(MA)	3	4/163	36	(108)
	TM SA, PUB HEALTH	41-500G(SA)	5	4/163	36	(180)
	TM TA, PUB SAFETY	41-500G(TA)	3	4/163	36	(108)
	TM ZA, LANG	41-500G(ZA)	5	4/163	36	(180)
CA TOTAL						2,679

to the field army. All construction units were assigned to the TASCOM engineer command to accomplish what might be termed "base construction," or construction of the ports and related logistics facilities for the COMMZ, logically a theater responsibility.

Divisional engineer support. Divisional combat battalions were assigned to the eight divisions on the basis of division TOE's.

Basis of Assignment

Table 21. Divisional Engineer Unit Allocations

<u>DTM</u>	<u>UNIT</u>	<u>TOE</u>	<u>STR</u>	<u>BASIS</u>	<u>NUMBER</u>	<u>TOTAL</u>
296	EN BN ARMD/MECH	5-145H	1,001	1/8,22	7	7,007
297	EN BN AM DIV	5-215T	620	1/7	1	620
						<u>7,627</u>

Separate brigade engineer support. The separate engineer companies normally associated with the separate armored, mechanized, and airborne brigades were generated on the basis of the assignment of those brigades to the force.

As the separate air cavalry brigade was a conceptual unit, an engineer company had to be assigned to it. This was effected by tying an airborne engineer company, DTM 295, to the brigade headquarters, DTM 5, as there is no separate airmobile engineer company within the MODFPS. There is very little difference in maintenance and logistic support requirements between the two when considering the impact of their personnel and equipment strengths during the force roundout phase of the computer program.

The armored cavalry regiments were played with their organic engineer companies, therefore, these units were not separately identified.

Basis of Assignment

Table 22. Separate Brigade Engineer Unit Allocations

<u>DTM</u>	<u>UNIT</u>	<u>TOE</u>	<u>STR</u>	<u>BASIS</u>	<u>NUMBER</u>	<u>TOTAL</u>
293	EN CO SEP MECH/ARM'D	5-127H	258	1/9,25	2	516
295	EN CO SEP ABN	5-137H	150	1/5,17	2	300
						816

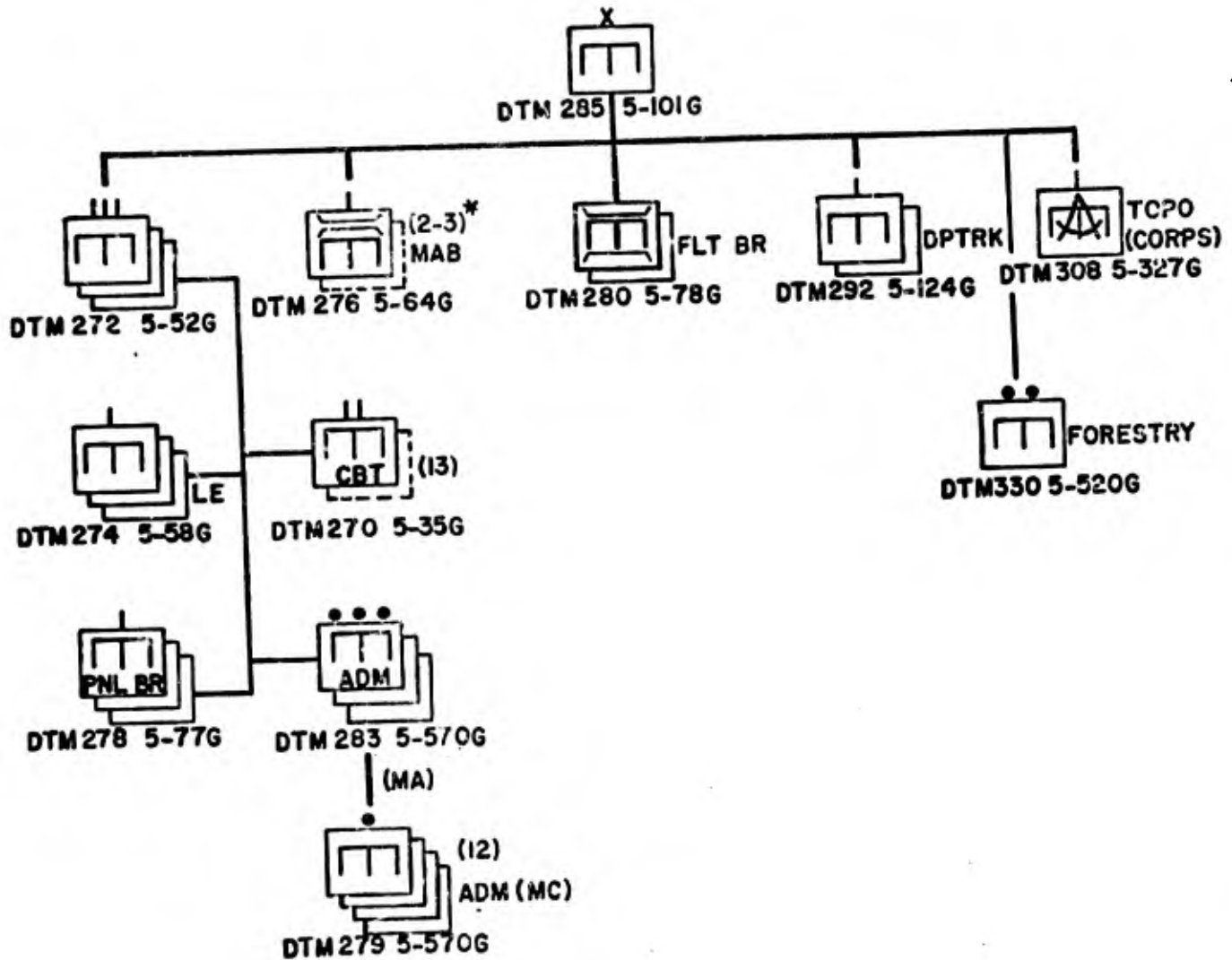
Corps engineer support. A combat engineer brigade was generated by MODFPS to support each of the corps. (Figure 12.) Units were assigned to the brigades based on both the existence of combat modules and quantitative workloads generated by the parametric routines.

The basic building block was the combat engineer battalion, DTM 270. Twenty-six were generated on the basis of providing corps support to the maneuver brigades of the divisions and the field army.

The combat engineer groups, DTM 272, were assigned as command and control on the basis of 1 per 4 to 5 battalions. One atomic demolition munition platoon, DTM 283; one light equipment company, DTM 274; and one panel bridge company, DTM 278, were tied to each group headquarters. This is a logical approach in that each group headquarters was permanently assigned basic resources common to support roles anticipated in Europe. Engineer battalions generated on the basis of maneuver brigades could be assigned as the engineer brigade commander desires.

In that same line of thought, the bridge and dump truck companies and the forestry team were left under brigade control. They are mission oriented units and should be attached to the groups on an as required basis. In practical application, they would be continually attached among the groups at all times.

TYPICAL CORPS ENGINEER BRIGADE



NOTE: NUMBERS IN () INDICATE BRIGADE TOTAL.

*NUMBER WILL VARY ACCORDING TO ALLOCATION OF UNITS BETWEEN CORPS.

FIGURE 12

Field army engineer brigade. Unlike the combat battalions of the corps engineer brigades, those assigned to the army engineer brigade were generated on a quantitative workload basis. Twenty-one battalions were created by the engineer parametric subroutine for the European theater. The organization of the brigade presented at figure 13 does not really differ significantly from that of the corps. The group organizations are essentially the same. It is important here that the dump truck, panel and float bridge companies were generated as the result of the engineer subroutine. In this case they could be assigned to the groups as the situation might dictate.

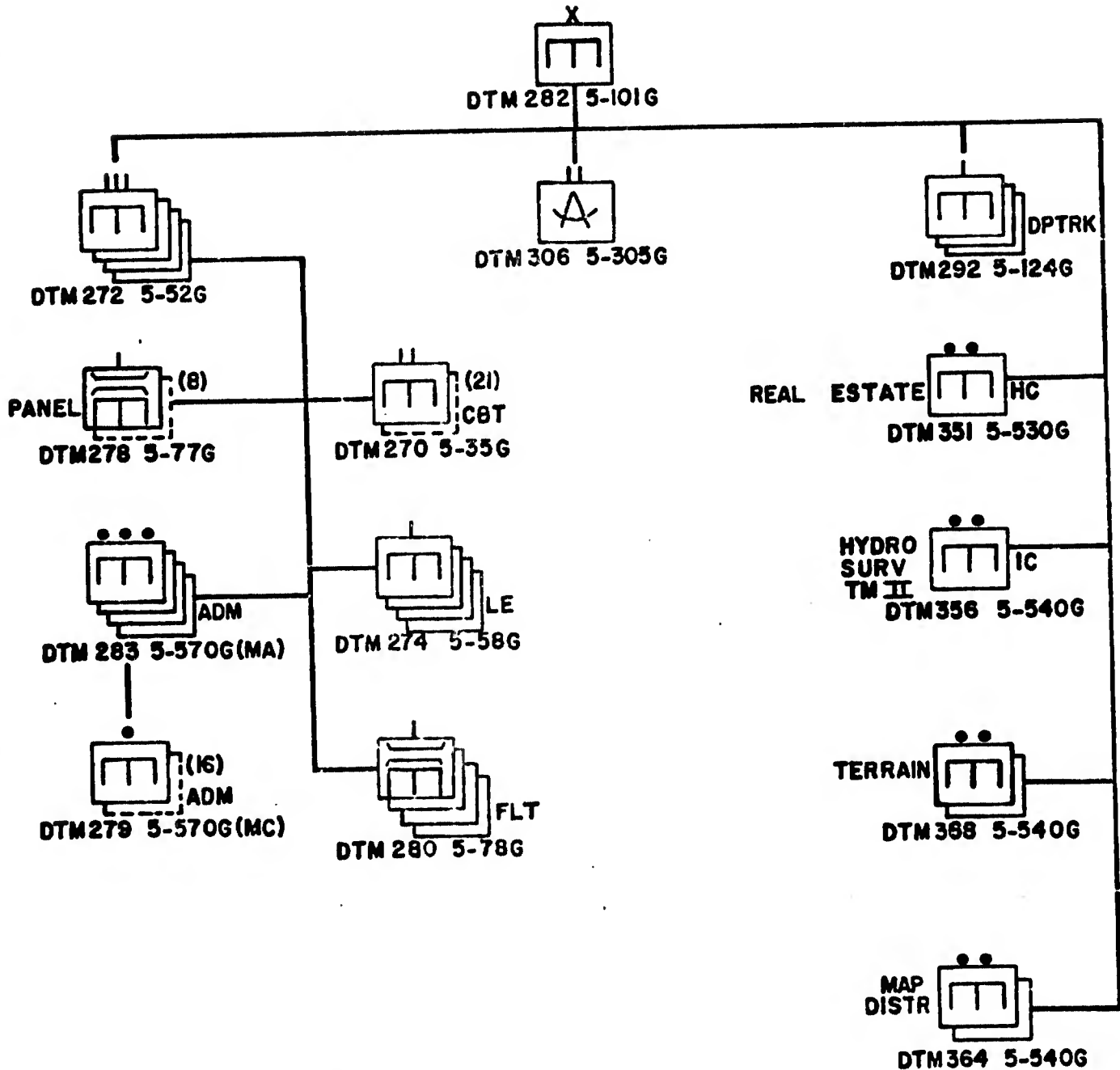
The topographic battalion, DTM 306, and the other four special types of detachments are those normally associated with the support of a field army and were generated on that relationship.

Basis of Assignment

Table 25. Field Army Engineer Unit Allocations

<u>DTM</u>	<u>UNIT</u>	<u>TOE</u>	<u>STR</u>	<u>BASIS</u>	<u>NUMBER</u>	<u>TOTAL</u>
282	HHC CBT BDE ARMY	5-101G	146	1/4	1	146
272	HHC CBT GROUP	5-52G	109	.2/270	4	436
270	BN CBT CORPS/ARMY	5-35G	798	Para	21	16,758
274	CO LT EQUIP	5-58G	210	1/272	4	840
278	CO PANEL BRIDGE	5-77G	125	Para	8	1,000
280	CO FLT BRIDGE	5-78G	229	Para	4	916
283	TM MA ADM PLT HQ	5-570G(MA)	5	1/272	4	20
279	TM MC ADM SQD	5-570G(MC)	5	4/283	16	80
292	CO DUMP TRK	5-124G	114	.7/272	3	342
306	BN TOPO ARMY	5-305G	356	1/282	1	356
351	TM HC REAL ESTATE	5-530G(HC)	16	1/282	1	16
356	TM MIL HYDRO SURV	5-540G	12	1/282	1	12
368	TM IJ TERRAIN	5-540G(IJ)	13	1/282	2	13
364	TM IH MAP DISTR	5-540G(IH)	38	2/306	2	76
						<u>21,011</u>
				ENGR TOTAL		56,369

ARMY ENGINEER BRIGADE



NOTE: NUMBER IN () IS BRIGADE TOTAL.

FIGURE 13

Military Intelligence (MI)

Military intelligence units were allocated on the basis of the existence rule. Assignment was made to all echelons within the field army. No MI group was formed, even though two battalions were created. It was felt that such a command and control element was not necessary, as the field army MI and the MI air reconnaissance support battalions could operate as separate units under army control due to the difference in the nature of their missions.

Basis of Assignment

Table 26. Military Intelligence Unit Allocations

<u>DTM</u>	<u>UNIT</u>	<u>TOE</u>	<u>STR</u>	<u>BASIS</u>	<u>NUMBER</u>	<u>TOTAL</u>
<u>DIVISIONAL SUPPORT</u>						
534	CO DIV ARMD/MECH	30-17G	85	1/8,22	7	595
535	CO DIV ABN/AM	30-17G	85	1/7	1	85
<u>SEPARATE BRIGADE & ACR SUPPORT</u>						
532	DET ACR/SEP BDE	30-14G	32	1/3,5,9, 17,25	6	192
<u>CORPS SUPPORT</u>						
536	DET CORPS	30-18G	72	1/6	2	144
<u>FIELD ARMY SUPPORT</u>						
538	BN FIELD ARMY	30-25G	752	1/4	1	752
530	BN AIR RECON SPT	30-5G	318	1/4	1	318
MI TOTAL						2,086

Army Security Agency (ASA)

ASA units are allocated on the presence of specific headquarters and units in the field. The existence rule was used in their assignment.

All allocations were found to be in consonance with RB 101-1.

Basis of Assignment

Table 27. Army Security Agency Unit Allocations

<u>DTM</u>	<u>UNIT</u>	<u>TOE</u>	<u>STR</u>	<u>BASIS</u>	<u>NUMBER</u>	<u>TOTAL</u>
<u>DIVISION SUPPORT</u>						
112	CO ASA DIV SPT AR	32-57G	213	1/8	4	852
114	CO ASA DIV SPT ME	32-57G	213	1/22	3	639
111	CO ASA DIV SPT AM	32-57G	213	1/7	1	213
<u>SEPARATE BRIGADE & ACR SUPPORT</u>						
106	DET ASA BDE SPT	32-57G	80	1/5,9,17, 25	4	320
107	DET ASA BDE SPT	32-57G	48	1/3	2	96
<u>CORPS SUPPORT</u>						
108	HHC ASA BN CORPS	32-56G	181	1/6	2	362
113	CO ASA AVN ARDF	32-59G	200	1/6	2	400
116	CO ASA OPNS	32-67G	347	1/6	2	694
118	CO ASA PROCESSING	32-77G	236	1/6	2	472
<u>FIELD ARMY SUPPORT</u>						
104	ASA GROUP	32-52G	255	1/4	1	255
120	CO ASA SECURITY	32-78G	209	1/4	1	209
122	CO ASA AVIATION	32-87T	215	1/4	1	215
ASA TOTAL						4,727

Military Police (MP)

Military police units were allocated on both the existence and workload rules. The organization and strengths of the units are significantly different from those presented in RB 101-1.

Normal MP unit relationships were maintained at the division level. Seven companies, TOE 19-27H, were allocated to the seven mechanized and armored divisions. One TOE 19-87T company was assigned to the airmobile division.

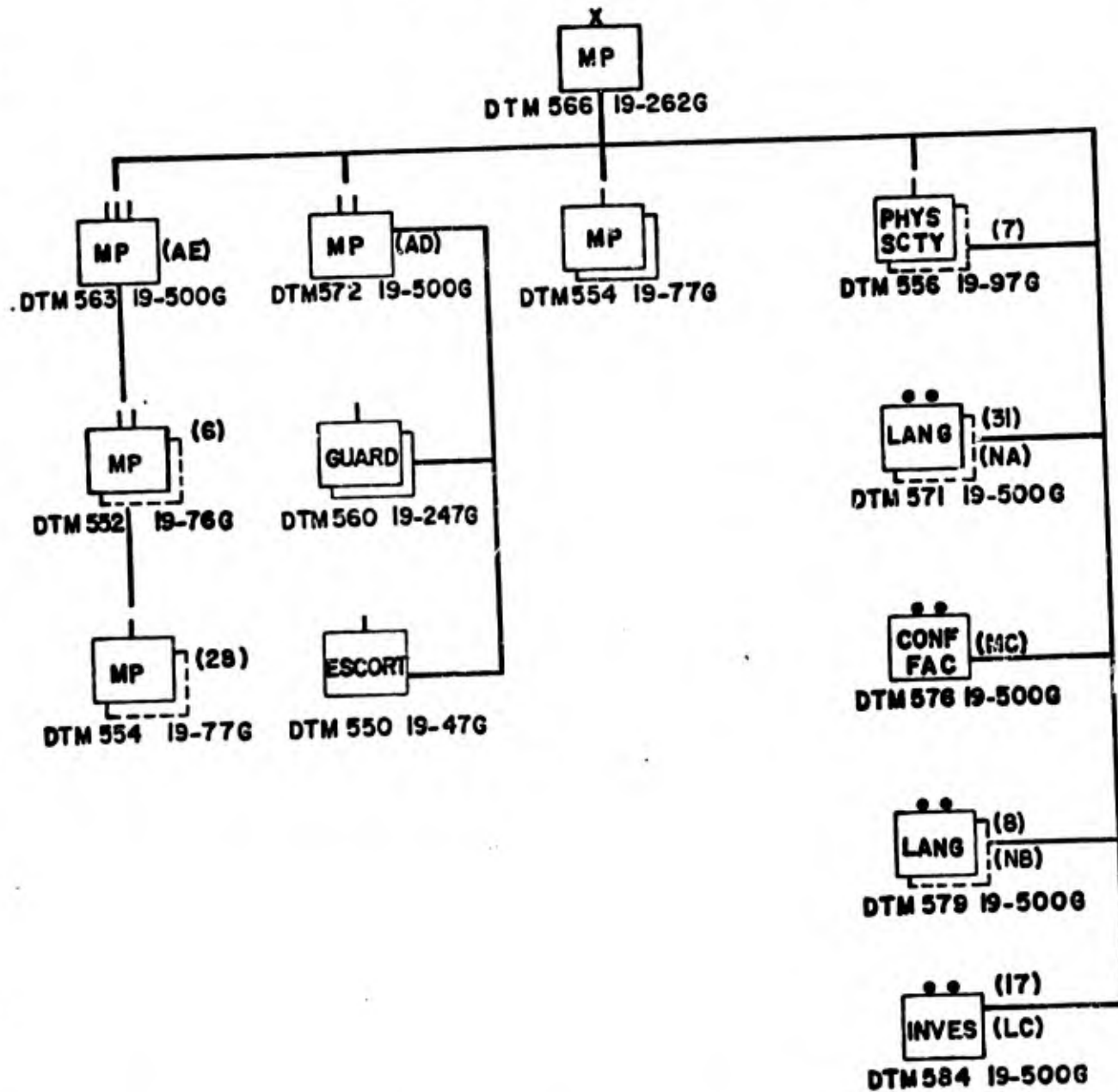
One company, TOE 19-77G, augmented with a crime investigation detachment, LB, was assigned to each corps. This unit would provide security to the corps headquarters. RB 101-1 allocates a battalion of four companies to the corps; one to provide command post security and three to provide MP coverage on an area basis. MODFPS considered the latter a function of the army MP brigade and allocated both the battalions and the companies to the MP brigade on the basis of population in the whole division and corps/field army areas. The MODFPS appears to have used the most flexible and practical approach.

An MP brigade was organized for employment at field army level to provide support on both an area and functional basis. The organization is shown in figure 14. The basic building block of the brigade was the MP company, TOE 19-77G. The MODFPS generated 28 of them based on an allocation of 4.57 companies per 80,000 troops in the field army area of operations. Two additional companies were allocated to provide security for the army and FASCOM headquarters complexes. The MP group headquarters and the six battalion headquarters were required to provide command and control of this large number of units. The MP group is much larger than the six corps companies and the single army battalion of four companies designed by RB 101-1 to perform the same function.

Only one MP escort company was allocated to the field army. The 12 division force of RB 101-1 had designed a three company force for this role. As this approach was based on the anticipated POW workload produced by the European scenario, the allocation of a lesser capability is assumed acceptable.

Seven physical security companies were assigned on the basis of the seven ammunition companies (DS/GS) that were assigned to the field army.

MP BRIGADE, FIELD ARMY



NOTE: NUMBER IN () IS BRIGADE TOTAL

FIGURE 14

The four types of special detachments shown in figure 14 were allocated on the basis of the existence of specific units requiring their services. Although assigned to the MP brigade, they would normally be attached to the units whose existence generated them within the force.

Basis of Assignment

Table 28. Military Police Unit Allocations

<u>DTM</u>	<u>UNIT</u>	<u>TOE</u>	<u>STR</u>	<u>BASIS</u>	<u>NUMBER</u>	<u>TOTAL</u>
<u>DIVISION SUPPORT</u>						
548	CO DIV AR/IN/MECH	19-27H	191	1/8,22	7	1,337
549	CO AM DIV	19-87T	156	1/7	1	156
<u>CORPS SUPPORT</u>						
554	CO MP	19-77G	186	1/6	2	372
582	DET LB CRIME INV	19-500G(LB)	14	1/6	2	28
<u>FIELD ARMY MP BRIGADE</u>						
566	HHD MP BDE	19-262G	67	1/4	1	67
563	TM HHD GP AE	19-500G(AE)	26	1/4	1	26
552	HHD BN MP	19-76G	59	.2/554	6	354
554	CO MP	19-77G	186	4.57/966	28	5,208
554	CO MP	19-77G	186	1/4,414	2	372
572	HHD BN TM (AD)	19-500G(AD)	27	1/4	1	27
560	CO GUARD	19-247G	127	1/4,576	2	254
550	CO ESCORT GUARD	19-47G	142	1/4	1	142
556	CO PHYSICAL SCTY	19-97G	160	1/600	7	1,120
571	DET LANG TM NA	19-500G(NA)	3	1/4,554	31	93
576	DET MC CONF FAC	19-500G(MC)	40	1/4	1	40
579	DET LANG TM NB	19-500G(NB)	10	1/566,572, 552	8	80
584	DET LC CRIM INVES	19-500G(LC)	27	1/414,964	17	459
					MP TOTAL	10,135

Signal

More signal units were assigned to the field army than appear in RB 101-1. The MODFPS allocated signal units on the basis of the increased

combat support and combat service support units and associated requirements. Additionally, a signal construction capability was given to the army signal brigade on the basis of the larger number of army area signal battalions organic to it. All in all, the field army signal organization appears well balanced.

The signal battalions assigned to the divisions were those normally associated with the respective units.

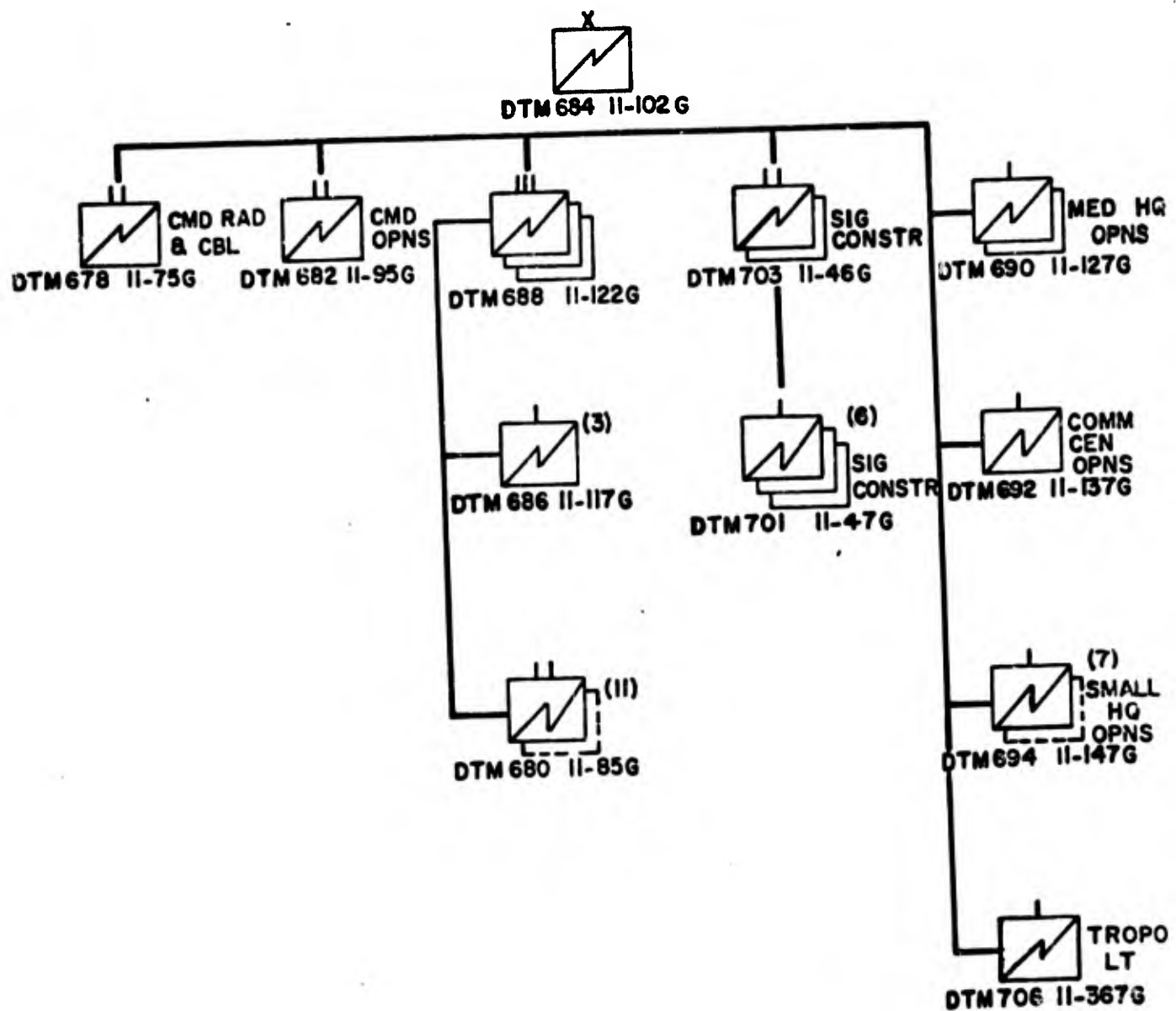
One corps signal battalion, TOE 11-15G, was assigned to each of the two corps. This is in accordance with current signal doctrine.

Forward area signal platoons, TOE 11-38G, were assigned to each of the four separate combat brigades. These platoons would provide required signal support.

The organization of the army signal brigade is shown in figure 15. It provides a balanced organization capable of supporting all of the basic communication requirements of the field army. The assignment of the command operations and command radio and cable battalions was on the existence of the signal brigade headquarters. The 11 army area signal battalions were generated on the basis of .466 per 15,000 nondivisional troops in the corps/field army area. This is an increase over the "type" army signal brigade of RB 101-1 which includes only five. Due to the large number of battalions called for, the MODFPS generated three signal group headquarters, TOE 11-122G, for command and control. The three signal support companies, TOE 11-117H, appearing under the signal groups, were generated to provide additional signal support on the basis of .33 companies per each of the eight combat divisions.

A signal construction capability was assigned to the signal brigade. RB 101-1 carries this function under the theater army STRATCOM

ARMY SIGNAL BRIGADE



NOTE: NUMBER IN () IS BRIGADE TOTAL

FIGURE 15

control. MODFPS allocated it to the army area, rather than the COMMZ. As there is a command and control headquarters to direct and supervise their activities, the assignment of the two signal battalions to support the army area signal battalions appears to be quite logical. Six construction companies were allocated on the basis of .5 per area signal battalion; the battalion headquarters on the basis of .3 per signal construction company.

The two medium headquarters operations companies, TOE 11-127G, were assigned to support the FASCOM.

The communications center operations and tropospheric companies were assigned directly to the signal brigade headquarters for command and control.

The seven small headquarters operations companies, although assigned to the army signal brigade, would be operating in support of the army air defense brigade and the army and two corps support brigades of the FASCOM.

Basis of Assignment

See table 29.

Psychological Operations

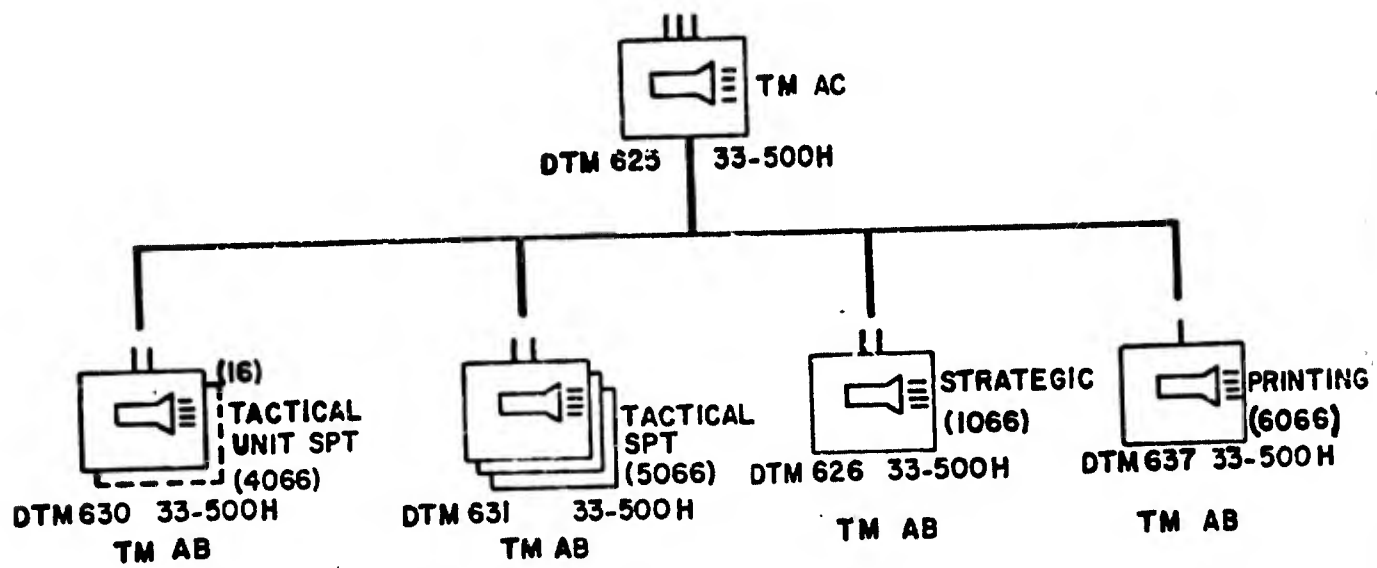
Psychological operations doctrine and unit organization is undergoing a great deal of change currently. It can be anticipated that previous organization will not be of great value in structuring future organizations. The MODFPS generated a fairly large organization to support the field army. (Figure 16.)

The building block was the tactical unit support battalion, DTM 630. These 16 units were generated on the basis of one per each of the

Table 29. Signal Unit Allocations

<u>DTM</u>	<u>UNIT</u>	<u>TOE</u>	<u>STR</u>	<u>BASIS</u>	<u>NUMBER</u>	<u>TOTAL</u>
<u>DIVISION SUPPORT</u>						
676	BN DIV ARMD/MECH	11-35H	666	1/8,22	7	4,662
677	BN AM DIV	11-205T	336	1/7	1	336
<u>CORPS SUPPORT</u>						
672	BN CORPS	11-38G	1,154	1/6	2	2,308
<u>SEPARATE BRIGADE SUPPORT</u>						
671	PLT FWD AREA	11-38G	51	1/5,9,17,25	4	204
<u>FIELD ARMY SIGNAL BRIGADE</u>						
684	HHC SIG BDE	11-102G	246	1/4	1	246
678	BN ARMY CMD R&C	11-75G	887	1/684	1	887
682	BN CMD OPNS	11-95G	1,088	1/684	1	1,088
680	BN ARMY AREA	11-85G	831	.466/964	11	9,141
686	CO SUPPORT	11-117G	318	.33/7,8,22	3	954
688	HHD GP SIG	11-122G	79	.33/680	3	237
703	HHC CABL CONST BN	11-46G	104	.3/701	2	208
701	CO CABLE CONSTR	11-47G	272	.5/680	6	1,632
690	CO MED HQ OPNS	11-127G	198	1/240,414	2	396
692	CO COMM CEN OPNS	11-137G	303	1/4	1	303
694	CO SMALL HQ OPNS	11-147G	119	1/40,416, 417	7	833
706	CO TROPO LT	11-367G	197	1/4	1	197
712	BN ADA	11-175G	326	1/36	1	326
					SIG TOTAL	23,958

PSYCHOLOGICAL OPERATIONS GROUP, FIELD ARMY



NOTE: NUMBER IN () IS GROUP TOTAL.

FIGURE 16

eight divisions, four separate brigades, two armored cavalry regiments, and each of the two corps headquarters. The three tactical support battalions, DTM 631, were assigned to back up the tactical unit support battalions on a one to five basis.

The strategic battalion and the printing company were assigned to the group to operate on both an area and functional basis.

Basis of Assignment

Table 30. Psychological Operations Unit Allocations

<u>DTM</u>	<u>UNIT</u>	<u>TOE</u>	<u>STR</u>	<u>BASIS</u>	<u>NUMBER</u>	<u>TOTAL</u>
<u>PSYOP GROUP, FIELD ARMY</u>						
625	HHC PSYOP GROUP	33-500H(AC)	62	1/4	1	62
626	BN PSYOP STRATEGIC	33-500H(10)	224	1/4	1	224
630	BN PSYOP TACTICAL UNIT SPT	33-500H(40)	63	1/7,8,22, 3,5,9, 17,25	16	1,008
631	BN PSYOP TACTICAL SPT	33-500H(50)	62	.2/630	3	186
637	CO PRINTING	33-500H(60)	53	1/4	1	53
					PSYOP TOTAL	1,533

COMBAT SERVICE SUPPORT UNITS

Ammunition

Ammunition services include supply, maintenance, and disposal within the field army. They are provided by the FASCOM corps and army support brigades.

The MODFPS generated two ammunition DS/GS groups, TOE 9-22G, for assignment to the corps support brigades. The basic building blocks of the group were the nine conventional ammunition companies generated by a theater parametric subroutine. By virtue of their assignment, four DS/GS

ammo battalion headquarters were generated for command and control. The special ammunition DS and GS/DS companies were tied to these on a 1:1 basis. Due to the odd number of conventional DS-GS ammunition companies, one of the ammunition groups would be assigned the fifth company. That group would probably be the one supporting the corps given the greater amount of combat power.

Assignment of the explosive ordnance control detachment, TOE series 9-520G, was accomplished by relating them to the number of combat units to be supported by each of the corps support brigades. Initial distribution was done evenly to the two ammunition groups. Normal employment of the units, of course, would be well forward in the division and corps areas.

Two explosive ordnance detachments would be assigned to the army support brigade of the FASCOM to provide area support to the field army service area.

Rocket and small missile maintenance support teams, generated by the MODFPS, were assigned to the ammunition DS/GS battalions for command and control. Each of the detachments was created on the basis of weapons systems to be supported within the force. Allocation of the detachments would be made between the groups on the basis of the divisions, separate brigades, and ADA units assigned to the respective corps.

The Pershing missile maintenance and support company GS, TOE 9-58G, was assigned to the army support brigade of the FASCOM, as the Pershing battalion would normally remain under field army control and would be deployed somewhere in the field army service area.

Basis of Assignment

Table 31. Ammunition Unit Allocations

<u>DTM</u>	<u>UNIT</u>	<u>TOE</u>	<u>STR</u>	<u>BASIS</u>	<u>NUMBER</u>	<u>TOTAL</u>
<u>CORPS SUPPORT GROUPS</u>						
588	HHC AMMO GP FASCOM	9-22G	93	1/6	2	186
613	DET MUNIT SAF CON	9-520G(GC)	10	1/6	2	20
612	DET EOD CONTROL	9-520G(GB)	11	1/6	2	22
610	DET GB EXPL DISP	9-520G(GA)	13	5/417 2/416	12	156
590	HHC AMMO BN FASCOM	9-36G	102	2/6	4	408
594	CO AMMO CONV DS/GS	9-38G	309	Para	9	2,781
598	CO SP AMMO DS	9-47G	198	2/6	4	792
600	CO SP AMMO GS-DS	9-48G	174	2/6	4	696
<u>MAINTENANCE</u>						
607	DET MSL MAINT (AA)	9-550G(AA)	92	6/412 1/7,8,22	14	1,288
615	DET EH SHILL MT CT	9-550G(EH)	2	1/3,5,9, 17,25, 7,8,22	14	28
619	DET EI REDEYE MT CT	9-550G(EI)	2	1/3,5,9, 17,25, 7,8,22	21	42
623	DET EL CHAP MT CT	9-550G(EL)	4	1.75/924	21	84
627	DET EM VULCAN MT CT	9-550G(EM)	2	1.5/924	18	36
635	DET EN FARR MT CT	9-550G(EN)	2	2/924	24	48
602	CO GM MAINT FASCOM	9-59G	278	1/6	2	556
592	CO PERSHING MT & SPT	9-58G	407	1/934	1	407
					AMMO TOTAL	7,550

Judge Advocate General

Legal services are provided to the field army by the staff judge advocate as a personal staff officer of the commander and as a special staff officer at the various levels of command. The FASCOM SJA not only provides legal services to his headquarters, but also exercises operational control over the various judge advocate general service organization teams, TOE 27-500.

The MODFPS generated the teams shown below for assignment to the FASCOM. Teams AA, FA, and HB were generated upon the existence of the field army, FASCOM, and two corps headquarters. The requirement for the balance of the teams was based upon unit and troop densities developed as the total force was rounded out.

Basis of Assignment

Table 32. Judge Advocate General Unit Allocations

<u>DTM</u>	<u>UNIT</u>	<u>TOE</u>	<u>STR</u>	<u>BASIS</u>	<u>NUMBER</u>	<u>TOTAL</u>
384	JAG DET HQ AA	27-500G(AA)	4	1/414	1	4
388	JA TM FB CLAIMS ADJUST	27-500G(FB)	10	.2/390	2	20
390	TM FA CLAIM INV	27-500G(FA)	4	3/4	9	36
				3/6		
392	TM HB GEN CM TR	27-500G(HB)	10	1/4,6	3	30
394	TM HA GEN CM	27-500G(HA)	6	.5/7,8,22	5	30
				1/414		
396	TM IA LEGAL ASST	27-500G(IA)	3	.96/966	6	18
398	TM IB LEGAL ASST	27-500G(IB)	4	.167/396	1	4
410	TM GB WAR CRIME	27-500G(GB)	5	.167/411		
411	TM GA WAR CRIME	27-500G(GA)	4	.96/966	6	24
	TM HC SPCM	27-500G(HC)	2	9/417	18	36
	TM HD SPCM	27-500G(HD)	3	4/416	4	12
				JA TOTAL		214

Maintenance

Maintenance units were identified in the program output only when they were separate entities not organic to a TOE battalion. The maintenance companies of the support battalions of the separate combat brigades, for example, were not separately identified as maintenance per se, but were accounted for in those battalion totals.

As regards divisional support, the three maintenance battalions, TOE's 29-25H, 29-35H, and 29-85T, were assigned to their respective divisions.

FASCOM support included the assignment of maintenance units to the corps and army support brigades. Direct and general support maintenance battalions of the FASCOM actually accomplish the maintenance support and are tailored to do their job based on the maintenance workload. This workload was developed by a parametric routine within the MODFPS. Equipment densities were compiled during force roundout. Using these data, the DS maintenance support and aircraft maintenance companies; the GS light and heavy maintenance companies; and the GS aircraft maintenance companies were allocated to the support brigades. Once numbers of units were established, unit headquarters were generated for command and control. The DS and GS battalions were then assigned to the two corps and the army support brigades equally, weighting the army support brigade when odd numbers of units were involved.

The divisions were considered as generating the majority of the maintenance workload in an attack environment, therefore the corps support brigades were given a greater share of the forces than they would have received if distribution were made on equipment density alone.

Basis of Assignment

See table 33.

Medical

Medical services are provided to the field army primarily by the medical brigade of the FASCOM. The divisional medical battalions and the two separate medical companies assigned to the armored cavalry regiments are the only medical units not under the command and supervision of the medical brigade commander. Accordingly, the troop list for this service was by far the most complex to piece together.

Table 33. Maintenance Unit Allocations

<u>DIM</u>	<u>UNIT</u>	<u>TOE</u>	<u>STR</u>	<u>BASIS</u>	<u>NUMBER</u>	<u>TOTAL</u>
<u>DIVISIONAL SUPPORT</u>						
180	BN MAINT MECH DIV	29-25H	956	1/22	3	2,868
181	BN MAINT AM DIV	29-85T	334	1/7	1	334
182	BN MAINT ARMD DIV	29-35H	1,004	1/8	4	4,028
<u>FASCOM SUPPORT</u>						
242	DET MAINT MGT (FAS)	29-403T	19	1/414	1	19
244	DET MAINT MGT (BDE)	29-403T	26	1/416,417	3	78
220	HHD MAINT BN ARMY	29-136G	63	.143/216, 223,226, 234,236, 604,786, 788	24	1,512
236	CO MAINT SPT DS	29-207G	305	12/417,416 Para	38	11,590
234	CO LT MAINT DS	29-207G	213	2/236	75	16,053
786	CO ACFT MAINT DS	55-457G	265	Para	5	1,325
226	CO COLL & CLASS	29-139G	216	1/416,417	3	648
223	CO HVY EQUIP MAINT GS	29-137G	298	Para	34	10,132
216	CO LT EQUIP MAINT GS	29-134G	262	Para	14	3,668
604	CO TIRE REPAIR	9-117G	160	1/416	1	160
750	HHD ACFT MAINT BN GS	55-456G	61	1/416,417 .05/788 .25/790 1/4	3	183
788	CO ACFT MAINT GS FWD	55-458G	290	Para	6	1,740
MAINT TOTAL						54,338

The mechanized and armored divisions were assigned medical battalions TOE 8-35H. The airmobile division received the normal airmobile medical battalion TOE 8-25T.

Two companies, TOE 8-147H, were allocated to support the two armored cavalry regiments operating under field army control.

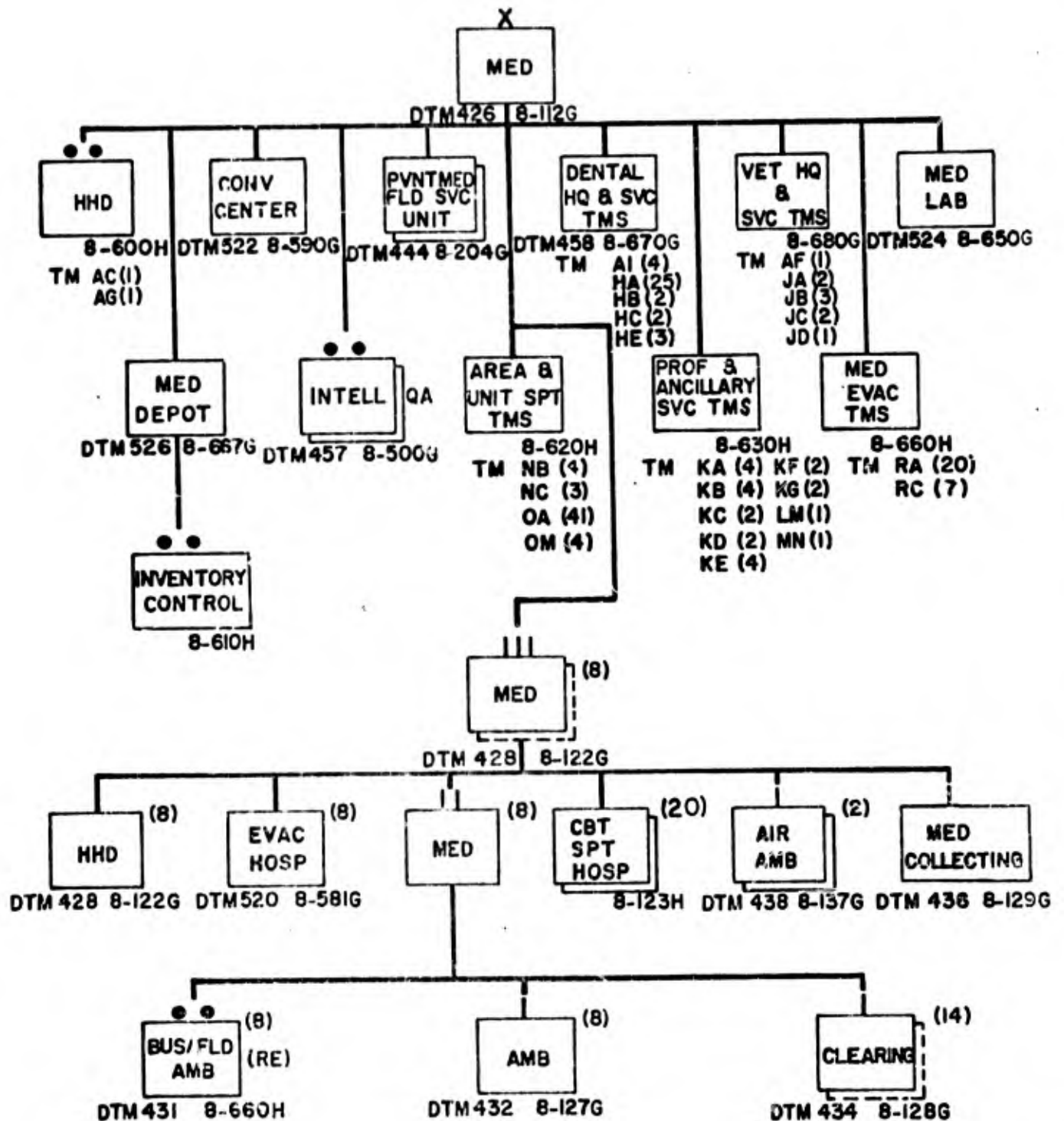
All nondivisional medical units in the field army not attached to the separate brigades or organic to other combat support units were allocated to the FASCOM medical brigade. The brigade was organized functionally with a view toward enhancing flexibility. That is, control headquarters and elements were established to exercise supervision on a functional basis. The various teams and detachments generated by force requirements were assigned to their respective functional area. The organization of the FASCOM medical brigade is shown in figure 17.

Eight medical groups were generated by the MODFPS. The basis of their allocations was the existence of the field army and the two corps. Doctrine states that the composition of these groups varies widely and changes quite frequently. The eight medical group headquarters, as the major subordinate command and control elements of the medical brigade, may have any units of the brigade attached. Normally, however, units performing specialized functions are retained under direct control of the brigade.

Eight 400-bed evacuation hospitals were assigned on the basis of one per combat division. The 20 combat support hospitals were assigned on the basis of two per division supported, and one per separate brigade.

A ground evacuation capability was provided by the allocation of eight bus/field ambulance detachments, TOE 8-660H, and eight ambulance companies, TOE 8-127G, assigned to the medical battalions that would be

MEDICAL BRIGADE FASCOM



NOTE: NUMBERS IN () REPRESENT BRIGADE TOTAL

FIGURE 17

operating in support of the divisions. Air evacuation means was provided within the medical groups by the assignment of two air ambulance companies. The brigade was allocated 27 teams of the TOE 8-660H series, which could be attached to the groups as required.

The medical brigade provides medical service for corps and field army troops on an area basis. Capability was provided to perform all medical functions associated with unit, division, and field army medical service. Fourteen medical clearing companies were generated to provide dispensary type service to nondivisional troops as well as backup support for the divisions.

One army medical depot was assigned to the brigade to perform the supply and maintenance function. An inventory control center, TOE 8-610H, was assigned to the depot to provide an automated ICC capability.

CDC has recommended that a convalescent center be assigned to the medical brigade.² Recognizing that a center would facilitate rapid restoration of patients to full duty, and considering the relatively short period of time that a large scale conflict would last, one was assigned to the FASCOM medical brigade.

Two preventive medicine field service units were assigned under brigade control to support that function.

A medical laboratory, TOE 8-650H, consisting of a base lab and three mobile labs, was assigned under brigade control to provide services on an area basis.

²Final Draft Manuscript, FM 54-3, The Field Army Support Command (Headquarters, USACDC Concepts and Force Design Group, November 1971), para. 4-12h, p. 4-12.

Dental services were provided for by the assignment of 36 dental teams to the brigade. They were allocated to the control of the four AI teams and would support the field army on an area basis as mobile teams. The numbers and types of units were generated on a troop population basis within the corps and field army areas.

Veterinary teams were provided under the control of the AF team to support that function. They would support the field army on an area basis. Allocation to the field army was made on a troop density basis.

Teams and detachments of the 8-630H series were assigned to the medical brigade to provide backup for specialized medical skills and functions. Surgical, orthopedic, intensive shock, neurosurgical, and anesthesiology teams, are representative of the services that these teams provide to augment the capabilities of the medical groups. The requirements for these units were based primarily on the numbers of evacuation and combat support hospitals assigned to the medical brigade.

The area and unit support teams, TOE series 8-620H, include medical detachment augmentations teams, whole blood collection and distribution detachments, and psychiatric detachment backup for units of the brigade. Assignment of these was based primarily on troop density.

Two medical intelligence detachments, TOE 8-500G(QA), were assigned by the MODFPS on the basis of two per field army.

Basis of Assignment

See table 34.

Personnel and Administrative Services

These services are provided to the field army by administrative companies assigned to the combat divisions and personnel and administration

Table 34. Medical Unit Allocations

<u>DTM</u>	<u>UNIT</u>	<u>TOE</u>	<u>STR</u>	<u>BASIS</u>	<u>NUMBER</u>	<u>TOTAL</u>
<u>DIVISIONAL SUPPORT</u>						
419	BN AM DIV	8-25T	411	1/7	1	411
420	BN DIV AR/MECH	8-35H	392	1/8,22	7	2,744
<u>ACR SUPPORT</u>						
440	CO ACR	8-147H	125	1/3	2	250
<u>FASCOM MEDICAL BRIGADE</u>						
426	HHD BDE	8-112G	76	1/414	1	76
428	HHD GP	8-122G	41	4/4 2/6	8	328
430	HHD BN	8-126G	40	.2/438 .067/478 .2/432 .2/434,436	8	320
520	HOSP EVA SEMI MBL	8-581G	320	1/7,8,22	8	2,560
	CBT SPT HOSP	8-123H	230	1/5,9,17,25 2/7,8,22	20	4,600
438	CO AIR AMB	8-137G	183	1/6	2	360
436	CO COLLECTING	8-129G	191	1/6	2	382
431	DET RE BUS/FLD AMB	8-660H(RE)	14	4/6	8	112
432	CO AMBULANCE	8-127G	101	3/6 .33/3,5,9, 17,25	8	808
434	CO CLEARING	8-128G	133	3/4 4/6 .33/7,8,9	14	1,862
526	DEPOT, ARMY	8-667G	227	1/4	1	227
	DET INV CONTROL	8-610H	26	1/526	1	26
522	HHD CONV CENTER	8-590G	264	1/4	1	264
444	UNIT PVNT SVC FLDS	8-204G	124	2/4	2	248
457	DET QA INTELLIGENCE	8-500G(QA)	12	1/6	2	24
	TM AC COMPANY HQ	8-600H(AC)	6	1/426	1	6
456	TM AG HQ PROF MED SVC	8-600H(AG)	14	1/426	1	14
<u>Dental Services</u>						
458	HQ DENTAL SVC AI	8-670G(AI)	13	.111/472,476	4	52
472	DET HE DENT LAB	8-670G(HE)	30	.4/966	3	90
476	DET AA DENT SVC	8-670G(AA)	56	4/966	25	1,400
	TM HB SVC AUG G DN	8-670G(HB)	2	1/6	2	4
	TM HC REMOV PROSTHO	8-670G(HC)	5	1/6	2	10

Table 34 (continued)

<u>DTM</u>	<u>UNIT</u>	<u>TOE</u>	<u>STR</u>	<u>BASIS</u>	<u>NUMBER</u>	<u>TOTAL</u>
<u>Veterinary Services</u>						
460	HQ VET PROF SVC	8-680G(AF)	6	1/4	1	6
500	DET VET SM AN HOSP	8-680G(JD)	16	1/4	1	16
502	DET VET SM AN DISP	8-680G(JC)	8	1/6	2	16
	TM JA VET SVC SM	8-680G(JA)	6	1/6	2	12
494	DET JB VET SVC LG	8-680G(JB)	58	1/4	3	174
				.4/966		
<u>Teams, Area and Unit Support</u>						
462	DET OA MEDICAL	8-620H(OA)	10	1/138,134, 136,132, 140,142, 123 10/6 .5/923	41	410
466	DET NB COLL BLOOD	8-620H(NB)	10	2/973	4	40
468	DET NC BLOOD DIST	8-620H(NC)	8	3/4	3	24
488	DET OM PSYCHIATRIC	8-620H(OM)	19	1/4 1.3/6	4	76
<u>Professional and Ancillary Services</u>						
492	DET KA SURGICAL	8-630H(KA)	7	.25/520	4	28
486	DET KB ORTHOPEDIC	8-630H(KB)	7	.25/520	4	28
	TM KC INTENSIVE SHK	8-630H(KC)	6	1/6	2	12
482	DET KD MAX FAC	8-630H(KD)	7	.125/520	2	14
484	DET KE NEUROSURG	8-630H(KE)	7	.25/520	4	28
496	DET KF THORACIC	8-630H(KF)	7	.125/520	2	14
	DET KG ANESTHESIOLOG	8-630H(KG)	3	1/6	2	6
498	DET LM TRMT CHEM	8-630H(LM)	14	1/4	1	14
504	DET MN RADIOLOGY	8-630H(MN)	3	1/4	1	3
524	LABORATORY	8-650G	114	1/426	1	114
<u>Medical Evacuation Teams</u>						
478	DET RA HEL AMB	8-660H(RA)	47	2/6,8,7,22	20	940
480	DET RC HEL AMB RES	8-660H(RC)	14	1/8,22	7	98
				MED TOTAL		19,251

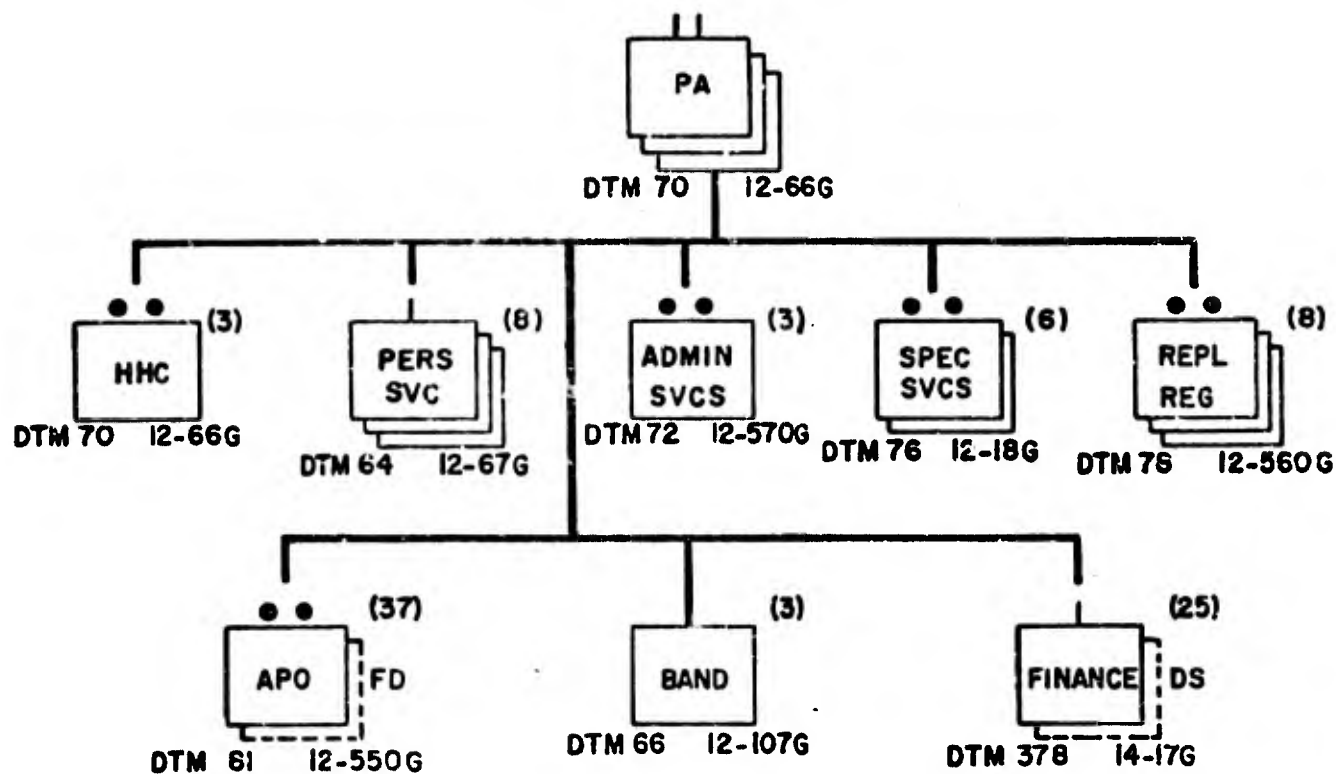
(P&A) battalions (TOE 12-66G) assigned to the FASCOM. P&A support above the division level is concentrated at the support brigade level and is provided on an area basis for nondivisional troops in the corps and field army areas. For this reason, the units have been assigned for the most part by the MODFPS on the basis of troop density. The organization of the P&A battalions of the FASCOM is shown in figure 18.

Normal administrative companies, TOE 12-7H and 12-77T, were assigned to the eight divisions.

FASCOM support included the assignment of three battalions; one assigned to each of the three support brigades. Due to the flexible nature of the composition of the support brigades, the organization of the P&A battalions would not be fixed. Subordinate units could be assigned in varying numbers depending on the composition of the corps they support.

There is a great deal of latitude in selecting the type of units within a functional area to support the FASCOM. Many combinations of teams can be made to support a force. The planning factors, in many cases, are differentiated only by increments of thousands of troops, so to say that one certain team should be allocated in favor of another is fairly judgmental and will depend a great deal on the environment in which the force is operating. In the case of the P&A function, one unit was selected by the MODFPS that differs from RB 101-1 and the CGSC view; the APO detachment TOE 12-550G(FD). The TOE 12-550G(FE) detachment used in RB 101-1 services 15,000 nondivisional troops; the FD detachment 10,000. The FD detachment provides more flexibility and was selected for use in the corps/field army area. MODFPS placed the FE detachment in the COMMZ.

PERSONNEL & ADMINISTRATION
BATTALIONS
FASCOM



NOTE: THE NUMBER IN () REPRESENTS FASCOM TOTAL

FIGURE 18

Basis of Assignment

Table 35. Personnel and Administrative Services Unit Allocations

<u>DTM</u>	<u>UNIT</u>	<u>TOE</u>	<u>STR</u>	<u>BASIS</u>	<u>NUMBER</u>	<u>TOTAL</u>
<u>DIVISIONAL SUPPORT</u>						
51	CO ADMIN AR/MECH	12-7H	265	1/8,22	7	1,855
55	CO ADMIN SPT AM	12-77T	380	1/7	1	380
<u>FASCOM SUPPORT</u>						
70	HHD PERS/ADMIN BN	12-66G	51	1/416,417	3	153
64	CO PERS SVC TY E	12-67G	220	.3/964	8	1,760
72	DET ADMIN SVCS	12-570G	17	1/416,417	3	51
76	DET SPECIAL SVCS	12-18G	26	1.33/966	6	156
78	DET REPL REG	12-560G	39	1.8/966	8	312
81	DET ARMY POST OFF	12-550G(FD)	28	1.5/964	37	1,036
66	BAND, ARMY 42PC	12-107G	43	1/6,414	3	129
378	FINANCE CO DS	14-17G	115	1/964	25	2,875
					P&A TOTAL	8,707

Finance

Finance support is provided to the field army by direct support companies assigned to the divisions and to nondivisional troops by DS companies of the P&A battalions of the FASCOM.

Basis of Assignment

Table 36. Finance Unit Allocations

<u>DTM</u>	<u>UNIT</u>	<u>TOE</u>	<u>STR</u>	<u>BASIS</u>	<u>NUMBER</u>	<u>TOTAL</u>
<u>DIVISIONAL SUPPORT</u>						
381	CO DS AR/MECH DIV	14-7H	110	1/8,22	8	880
					TOTAL	880
<u>CORPS/FIELD ARMY SUPPORT</u>						
378	CO DS	14-17H	115	1/964	25	2,875*

*Total for DTM 378 included with P&A BN total, DTM 70.

Chaplain

Religious services are provided to divisional TOE units by chaplains organic to them. Nondivisional religious support is directed by the field army chaplain using two-man chaplain support teams, TOE 29-500HA, on the basis of one team per 700 nondivisional troops.

Basis of Assignment

Table 37. Chaplain Unit Allocations

<u>DTM</u>	<u>UNIT</u>	<u>TOE</u>	<u>STR</u>	<u>BASIS</u>	<u>NUMBER</u>	<u>TOTAL</u>
	TM HA, CHAPLAIN SPT	29-500G(HA)	2	21/964	525	1,050

Supply and Services

Supply and services organizations were generated for assignment to the divisions, separate brigades, and the FASCOM. The function at the division level was tied to the DISCOM and the supply and transportation battalion.

Separate brigades were allocated support battalions. No support unit was generated for the separate air cavalry brigade, as the light infantry brigade HHC used to simulate that headquarters contains sufficient supply and services capability to perform the function. Adequate backup support is available from FASCOM assets to support the brigade if required.

Supply and services provided by the FASCOM are done so primarily through the supply and services battalion, TOE 29-146G. Units are attached to these battalions as required.

Petroleum services are provided by the petroleum battalions, created to command and control the 21 petroleum supply companies generated by a parametric subroutine. It is interesting to note the relatively large number of these companies that was generated. The FDM of FM 54-3 envisioned the necessity for only six.

A quartermaster service organization was generated under the TOE 10-500G series to support each of the support brigades of the FASCOM.

The engineer equipment teams created would operate under a composite arrangement and support the FASCOM on an area basis. These teams were not assigned to specific FASCOM commands.

Basis of Assignment

See table 38.

Transportation

The transportation brigade of the FASCOM provides transportation services to the field army. Transportation assets, exclusive of those assigned to the combat divisions and separate brigades, are under its control. The MODFPS generated units by use of a transportation parametric subroutine. Workloads were computed upon which transportation units were allocated. The transportation brigade is presented in figure 19.

Basis of Assignment

See table 39.

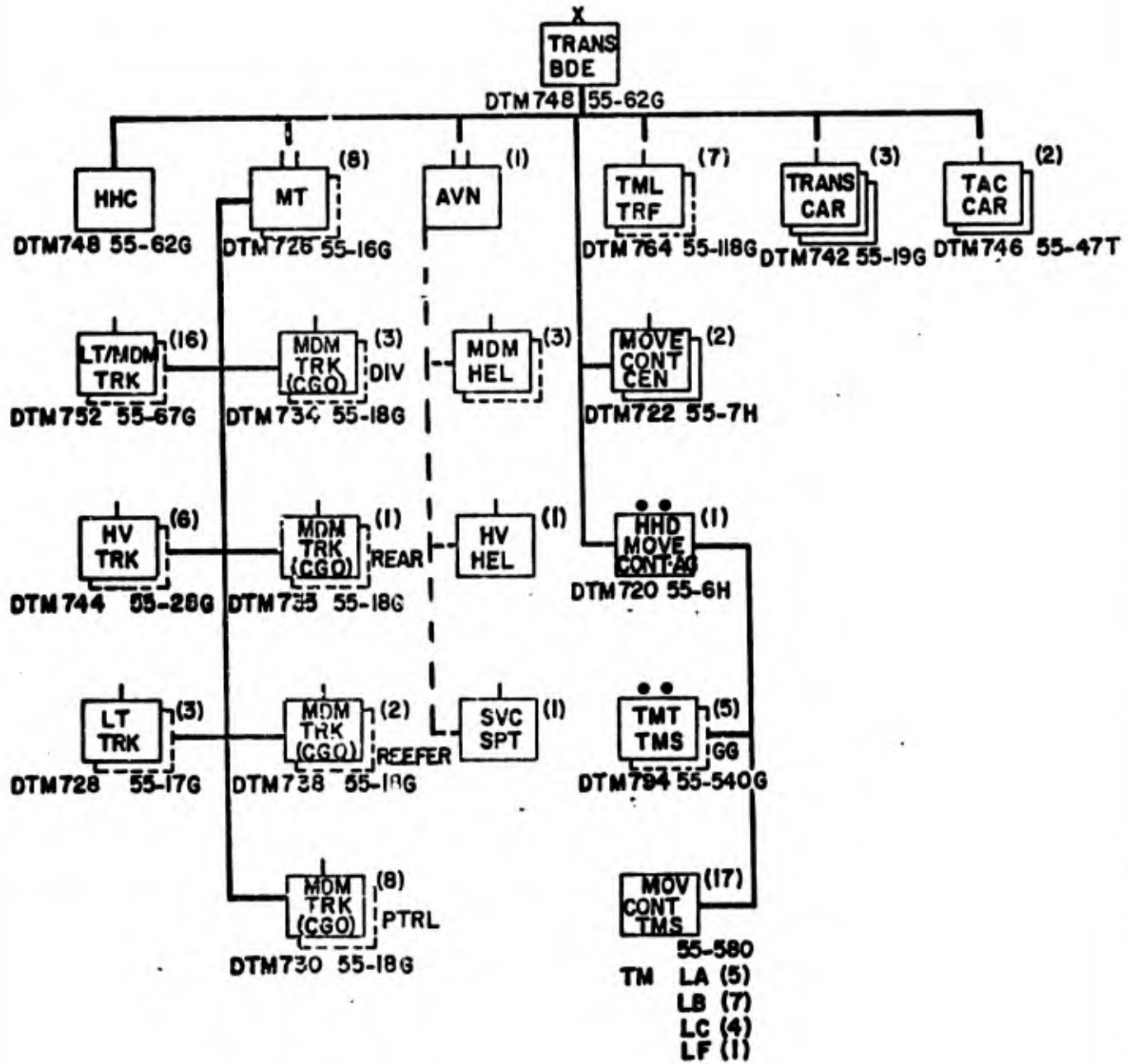
Historical

Military history detachments were allocated by MODFPS using the existence rule.

Table 38. Supply and Services Unit Allocations

<u>DTM</u>	<u>UNIT</u>	<u>TOE</u>	<u>STR</u>	<u>BASIS</u>	<u>NUMBER</u>	<u>TOTAL</u>
<u>DIVISIONAL UNITS</u>						
172	HHC MECH DIV SPT CMD	29-2H	121	1/22	3	363
173	HHC DISCOM AM DIV	29-42T	162	1/7	1	162
174	HHC ARMD SPT CMD	29-2H	121	1/8	4	484
183	BN SUP AM DIV	29-95T	479	1/7	1	479
184	BN SUP-TRANS MECH	29-65H	433	1/22	3	1,299
186	BN SUP-TRANS ARMD	29-115H	442	1/8	4	1,768
<u>SEPARATE BRIGADE SUPPORT</u>						
175	BN SPT SEP MECH/AR	29-75G	794	1/9,25	2	1,588
177	BN SPT SEP ABN BDE	29-105G	600	1/17	1	600
<u>FASCOM UNITS</u>						
230	HHC SPT SVC BN (A)	29-146G	100	.167/192, 196,198, 204,208, 212,232, 652,190	9	900
232	CO SUP & SVCS (A)	29-147G	303	1,964	25	7,575
190	CO FIELD SVC FWD GS	29-114G	228	1/7,8,22	8	1,824
204	CO FLD SVC (GS) (A)	29-124G	333	2/416	2	666
192	CO GEN SUPPLY (A)	29-118G	264	Para	12	3,168
212	CO ACFT MSL REP PTS (A)	29-129G	274	2/414	2	548
196	CO REP PARTS SUP (C)	29-119G	274	.5/7,8,22	4	1,096
198	CO REP PARTS SUP (A)	29-119G	300	.25/7,8,22	2	600
652	CO AIR DROP SUPPLY	10-407G	277	1/414	1	277
<u>Petroleum Services</u>						
638	HHC PETRL SUP BN	10-226G	84	.2/642,644	4	336
642	CO PETRL SUP (A)	10-227G	192	Para	15	2,880
644	CO PETRL SUP (C)	10-227G	306	Para	6	1,836
<u>QM Service Organizations</u>						
658	TM BA SALES DET MBL	10-500G(BA)	3	7/416 7/417	21	63
660	TM BB SALES DET SMBL	10-500G(BB)	5	1/416,417	3	15
662	TM BC SALES DET SUP	10-500G(BC)	8	1/416,417	3	24
670	TM JC PETRL LAB MBL	10-500G(JC)	7	1/416,417	3	21
<u>Engineer Equipment Teams</u>						
340	TM GB GAS GEN	5-520G(GB)	27	1/414	1	27
323	TM GC CO ₂ GEN	5-520G(GC)	13	1/414	1	13
					S&S TOTAL	28,612

TRANSPORTATION BRIGADE FASCOM



----- MAY BE ATTACHED FOR CONTROL
 NOTE: NUMBERS IN () REPRESENT BRIGADE TOTALS

FIGURE 19

Table 39. Transportation Unit Allocations

<u>DTM</u>	<u>UNIT</u>	<u>TOE</u>	<u>STR</u>	<u>BASIS</u>	<u>NUMBER</u>	<u>TOTAL</u>
<u>TRANSPORTATION BRIGADE</u>						
748	HHC BDE (FASCOM)	55-62G	135	1/414	1	135
<u>Motor Transport</u>						
726	HHD BN MTR TRANS	55-16G	43	.2/728,730, 734,742, 744,752, 746	8	344
734	CO MDM TRK CGO (DIV)	55-18G	177	.33/184,186, 183	3	531
735	CO MDM TRK CGO REAR	55-18G	177	Para	1	177
738	CO MDM TRK REEFER	55-18G	195	Para	2	390
730	CO MDM TRK PETRL FWD	55-18G	177	1/172,173, 174	8	1,416
752	CO LT/MDM TPK FWD	55-67G	198	2/183,184, 186	16	3,168
744	CO HV TRK FWD	55-28G	153	Para	6	918
728	CO LT TRK 5-TON	55-17G	176	.41/183, 184,186	3	528
<u>Control</u>						
722	CO MOV CONTROL GEN	55-7H	79	1/417	2	158
720	HHD MOV CON AGENCY	55-6H	166	1/414	1	166
794	TMT TM GG	55-540G(GG)	6	1/416	5	30
	TM LA INSTAL SPT	55-580G(LA)	3	1/416	5	15
	TM LB TRANSFER PT	55-580G(LB)	5	3/416	7	35
	TM LC FLD DEP SPT	55-580G(LC)	8	2/417	4	32
	TM LD CONTROL	55-580G(LD)	22	1/414	1	22
764	CO TERM TRF FASCOM	55-118G	258	Para	7	1,806
742	CO CAR SPT CMD	55-19G	107	1/416,417	3	321
746	CO TAC CARRIER	55-47G	180	1/417	2	360
						10,552

Basis of Assignment

Table 40. Military History Detachment Allocations

<u>DTM</u>	<u>UNIT</u>	<u>TOE</u>	<u>STR</u>	<u>BASIS</u>	<u>NUMBER</u>	<u>TOTAL</u>
528	DET MILITARY HIST	20-17G	2	1/4,414, 516	12	24

Public Information

Public information units were allocated as teams of the 45-500G series.

Basis of Assignment

Table 41. Public Information Unit Allocations

<u>DTM</u>	<u>UNIT</u>	<u>TOE</u>	<u>STR</u>	<u>BASIS</u>	<u>NUMBER</u>	<u>TOTAL</u>
614	TM AE PRESS CAMP HQ	45-500G(AE)	17	1/4,414	2	34
616	TM FA OPS	45-500G(FA)	13	1/6	2	26
618	TM FP OPERATIONS	45-500G(FP)	5	1/6,4,414 2/7,8,22	20	100
624	DET CMD INFO	45-520G	29	1/4	1	29
						189

Chapter V

SUMMARY

The Problem

This paper has addressed the question of the influence of a specific combat environment on the allocation of units to the field army. Unique to the development of the force was the use of the technique of rounding out the combat support and combat service support factions by considering the additional workloads that those categories of units imposed on the force as a whole by their presence.

Research Methodology

To insure that the theoretical force would be credible, assumptions upon which the investigation was based were related as closely as possible to the "real world", consistent with keeping the paper unclassified in its final form.

The basic maneuver elements upon which combat support and combat service support requirements were developed approximate those recommended to be maintained by the US Army in the 1970's. The environment in which the field army was assumed to be employed was developed by a field survey of what was perceived to be the greatest threat to the United States that could result in the deployment of such a large force.

The use of quantitative workloads in the determination of combat support and combat service support unit allocations is not new to force development planning. It just had never been applied to a problem of this magnitude. Workloads were generated by use of a computerized

wargame which took into consideration those elements of the Central European environment which would have a significant impact on both tactical and logistical units. These workloads were translated, both manually and with computer assistance, into units capable of satisfying the requirements. Unlike previous attempts, workloads generated by support units were considered during force roundout to insure that force balance was achieved. Unit capability data used was the most current available to the US Army Combat Developments Command as of January 1972.

The MODFPS did not produce command relationships. That is, numbers of units were created in response to existence of others or on the basis of specific workloads. No tie was made to a specific command and control element. It was necessary to examine the justification for each unit by DTM and piece together individual command structures. This was an extremely time consuming process and will continue to be a characteristic of this methodology unless a major modification is made to the MODFPS.

Findings

An eight division field army, developed in an attack posture, involved in a mid-intensity conflict in Central Europe, would be proportionately larger than one developed without fully considering those factors. A simple comparison of recapitulated strengths indicates the functional areas in which the major increases were developed:

	<u>Thesis</u>	<u>RB 101-1</u> ¹
<u>Command and Control</u>	3,353	5,217
<u>Combat Units</u>	93,445	231,533

¹RB 101-1, Organizational Data for the Army in the Field (US Army Command and General Staff College, 1 April 1971), para. 2-3, p. 2-11.

	<u>Thesis</u>	<u>RB 101-1</u>
<u>Combat Support Units</u>		
Field Artillery	47,633	35,959
Air Defense Artillery	19,689	23,822
Aviation	9,507	9,919
Chemical	2,552	2,960
Civil Affairs	2,679	3,031
Engineer	56,369	43,227
Military Intelligence	2,086	3,640
Army Security Agency	4,727	6,247
Military Police	10,135	5,710
Signal	23,958	12,974
Psyop	<u>1,533</u>	<u>252</u>
	180,878	147,741
<u>Combat Service Support Units</u>		
Ammunition	7,550	10,964
Judge Advocate Corps	214	138
Maintenance	54,338	35,106
Medical	19,251	20,321
Personnel & Admin Services	8,707	4,287
Finance	880	2,185
Chaplain	1,050	54
Supply & Services	28,612	21,449
Transportation	10,552	11,580
Military History	24	34
Public Information	<u>189</u>	<u>59</u>
	131,367	106,177
Force Totals	<u>409,043</u>	<u>490,668</u>

The division slice within the field army developed by this paper is approximately 45,000 men, compared to the slice of FM 101-10-1 of 39,705.²

The impact of this increase in the size of the force, considering that the interaction of units played a key role in justifying allocations, is that there appears to be a greater need for several categories of units than currently forecast. This is particularly true with engineer, military police, signal, maintenance, medical, supply and services, and transportation units.

Conclusions

The basis for the allocation of units to a type field army has been set forth for objective analysis in a single document for the first time. The allocation has been based on a given set of assumptions made within real world constraints. The allocations can be analyzed in detail by a reader.

The fact that the field army developed here is larger than those designed without the benefit of theater and other combat related parametric data, indicates that further investigation might be necessary into this question.

Only one combat posture was investigated during this analysis. Also, only one theater of operation was assumed. The findings indicate that certain functional areas require larger troop strengths to adequately perform the missions required of them when in an attack posture than

²FM 101-10-1, Staff Officer's Field Manual, Organizational, Technical and Logistical Data, Unclassified Data (Department of the Army, July 1971), para. 1-5, p. 1-4.

previously envisioned. A reasonable question would be, "Do these same relationships hold true in the other five combat postures?" If they do, it is a possibility that FM 101-10-1 could be in serious error where tables and data are based on a division slice derived from RB 101-1.

The evidence presented in this paper indicates that at least the possibility of such a circumstance exists.

Recommendations

It is recommended that this investigation be continued in an effort to round out the entire theater force, to include the theater army support command necessary to support this field army. Once that is accomplished, a complete study would be available to guide completion of force analyses for each of the other five combat postures.

Upon completion of all force designs, an analysis could be made to determine a credible division slice for possible incorporation in FM 101-10-1 or other related planning documents.

APPENDIX A

DTM List

<u>DTM NO</u>	<u>BR</u>	<u>L</u>	<u>UNIT DESIGNATION</u>	<u>SRC</u>
2	HQ	11	HHC THEATRE ARMY	TDAP1WOARAA
3	AR	11	HHT ARMD CAV REGT	17052G60000
4	HQ	11	ARMY	51001G70000
5	IN	11	HHC SEP LT INF BDE	77102G80000
6	HQ	11	CORPS	52001T51000
7	IN	11	HHC AM DIV	67002T50000
8	AR	11	HHC DIV HQ ARMD DIV	17004G60000
9	AR	11	HHC SEP ARMD BDE	17102G60000
10	AR	11	HHC BDE HQ ARMD DIV	17042G60000
11	IN	11	HHC ABN DIV	57004G60000
12	IN	11	HHC DIV HQ INF DIV	07004G60000
13	IN	11	HHC ABN DIV BDE	57042G60000
14	IN	11	HHC BDE HQ INF DIV	07042G60000
15	IN	11	HHC SEP INF BDE	07102G60000
16	IN	11	CO LONG RANGE	07157G70000
17	IN	11	HHC SEP ABN BDE	57102G60000
18	IN	11	PLAT SCOUT DOG	07167G70000
19	SF	11	HHC ABN DF GROUP	31106G80000
20	SF	11	CO AIRBORNE SF	31107G80000
21	IN	11	DET PFDR ABN DIV	07168G70000
22	IN	11	HHC DIV HQ MECH DIV	37004G60000
23	IN	11	HHC AM DIV ABN BDE	67042T52000
24	IN	11	HHC BDE HQ MECH DIV	37042G60000
25	IN	11	HHC SEP MECH BDE	37102G60000
26	FA	11	HHB DIV ARTY HQ	06302G60000
27	FA	11	HHB DIV ARTY ABN DIV	06201G60000
28	FA	11	HHB ARTY GP HQ	06401G60000
30	FA	11	HHB CORPS ARTY	06501G60000
31	FA	11	BTRY AV AM DIVARTY	06702T50000
32	FA	11	BTRY SEARCHLIGHT	06558G60000
33	FA	11	HHB ARTY AM DIV	06701T50000
34	FA	11	BN TARGET ACQUISITION	06575G80000
36	AD	11	HHB AD ARTY BDE	44002G70000
40	AD	11	HHB GROUP	44012G70000
49	AG	11	CO ADMIN ABN DIV	12157G60000
51	AG	11	CO ADMINISTRATION (DIV)	12037G60000
55	AG	11	CO ADMIN SPT COMD AM D	12077T50000
57	AG	11	CO PERS SVC TY A	12067G71000
58	AG	11	CO PERS SVC TY B	12067G72000
60	AG	11	CO PERS SVC TY C	12067G73000
62	AG	11	CO PERS SVC TY D	12067G74000
64	AG	11	CO PERS SVC TY E	12067G75000
66	AG	11	BAND ARMY 42-PIECE	12067G81000
70	AG	11	HHD PERS/ADMIN (FASCOM)	12066G72000
72	AG	11	DET ADMIN SVC (FASCOM)	12570G81000
76	AG	11	DET SPECIAL SVC	12018G70066
78	AG	11	DET REPL REG	12560G80066
80	AG	11	DET ARMY POST OFFICE	12550G70066
86	AG	11	CO POSTAL GS	12550G70066
88	AG	11	HHD REPL REG CO	12560G80066

<u>DTM NO</u>	<u>BR</u>	<u>L</u>	<u>UNIT DESIGNATION</u>	<u>SRC</u>
89	AG	11	HHD SPECIAL SVC CO	12018G70066
90	AG	11	AGCY PERS AND ADMIN	29112T70000
92	AG	11	HHD PERS/ADMIN (ASCOM)	12066G71000
94	AG	11	DET ADMIN SVC (ASCOM)	12570G82000
102	AG	11	HHC PERSONNEL COMMAND	29111T80000
104	MI	11	GP ASA	32052G70000
107	MI	11	DET ASA BDE SPT	32057G81000
108	MI	11	HHC ASA BN (CORPS)	32056G60000
109	MI	11	DET SF GP	32500D31066
110	MI	11	CO ASA DIV SPT (IN/AB/AM)	32057G71000
112	MI	11	CO ASA DIV SPT (ARM/MEC)	32057G72000
114	MI	11	DET ASA ACR SPT	32057G81000
116	MI	11	CO ASA OP A	32067G80000
118	MI	11	CO ASA PROCESSING	32077G70000
120	MI	11	CO ASA SECURITY	32078G70000
121	AV	11	BN ASLT HEL AM DIV	01155T50000
122	MI	11	CO ASA AVIATION	32087T60000
123	AV	11	ASLT HEL CO	01357T50000
125	AV	11	BN ASLT SPT HEL AM DIV	01165T50000
126	SF	11	CO AVN SP FORCES GP	01307G80000
128	AV	11	BN DIV SUPPORT	01075G60000
129	AV	11	BN AIRBORNE DIVISION	01055G60000
130	AV	11	CO ASSAULT HELICOPTER	01077G60000
132	AV	11	CO CORPS	01127G80000
134	AV	11	CO AERIAL SURVL	01128T60000
136	AV	11	CO ARMY	01137G80000
138	AV	11	CO AIR TRAFFIC CONTROL	01207G80000
139	AV	11	HHC GP AM DIV	01101T50000
140	AV	11	HHC GROUP	01252G60000
142	AV	11	HHC BN	01256G60000
144	AV	11	CO MEDIUM HELICOPTER	01258G60000
146	AV	11	CO HEAVY HELICOPTER	01259G60000
147	CM	11	CO MECH FLAME	03357T70000
148	CM	11	TM CBR RECON SF	03500G8LB01
149	CA	11	HHC AREA A	41002G71000
150	CM	11	TM OA CBR STAFF-SF	03500G80A01
151	CM	11	TM LA CBR RECON	03500G8LA01
152	AV	11	DET THEATRE ARMY	29500D80066
153	AV	11	CO GS AV GP AM DIV	01102T50000
154	CA	11	HHD CA BDE (FASCOM)	41201G70000
155	CA	11	HHD CA BDE (ASCOM)	41201G70000
156	CA	11	HHD CA GP (ASCOM)	41500G70066
157	CA	11	HHD CA BN (ASCOM)	41500G70066
158	CA	11	CO (ASCOM)	41500G70066
159	CM	11	HHD GP	03032G60000
160	CM	44	CO PROCESSING	03077G70000
161	CA	11	HHD CA BN (FASCOM)	41500G70066
162	CM	11	HHD SMOKE GENR BN	03266G60000
163	CA	11	CO CA (FASCOM)	41500G70066
164	CM	11	CO SMOKE GENR	03267G60000
165	CM	11	TM KA CBR AGENT S+T	03500G8KA01

<u>DTM NO</u>	<u>BR</u>	<u>L</u>	<u>UNIT DESCRIPTION</u>	<u>SRC</u>
166	CM	11	DET JA CBR CENTER	03500G8JA01
167	CM	11	DET DECONTAMINATION FB	03500G8FB01
168	CM	11	DET DECONTAMINATION FA	03500G8FA01
169	CM	11	DET LAB THEATER	03097G80000
170	CS	11	HHC INF DIV SPT COMMAND	29002G60000
171	CS	11	HHC+BAND SPT COMD ABN DIV	29052G60000
172	CS	11	HHC MECH DIV SPT CMD	29002G60000
173	CS	11	HHC AM DIV	29042T50000
174	CS	11	HHC ARMD SPT CMD	29002G60000
175	CS	11	BN SPT SEP M/A BDE	29075G60000
176	CS	11	BN SUPPLY+TRANS BN (INF)	29005G60000
177	CS	11	BN SPT, SEP ABN BDE	29105G60000
178	CS	11	BN MAINT INFANTRY DIV	29015G60000
179	CS	11	BN MAINT AIRBORNE DIV	29055G60000
180	CS	11	BN MAINT MECHANIZED DIV	29025G60000
181	CS	11	BN MAINT AIRMOBILE DIV	29085T50000
182	CS	11	BN MAINT ARMORED DIV	29035G60000
183	CS	11	BN SUP AIRMOBILE DIV	29095T50000
184	CS	11	BN SUPPLY+TRANS MECH DIV	29065G60000
185	CS	11	BN SPT SEP INF BDE	29135G60000
186	CS	11	BN SUPPLY+TRANS ARMD DIV	29065G60000
188	CS	11	HHC GEN SPT GP-CORPS	29102G81000
189	CS	11	HHC GEN SPT GP-ARMY	29102G82000
190	CS	11	CO FIELD SERVICE FWD	29114G60000
191	CS	11	BN SPT, SEP LT INF BDE	29245G80000
192	CS	11	CO GENERAL SUPPORT FWD	29118G60000
194	CS	44	CO GEN SPT COMMZ	29118G60000
196	CS	11	CO REP PART GS FWD	29119G61000
198	CS	11	CO REP PART GS FWD A	29119G62000
200	CS	44	CO REP PART GS COMMZ	29119G62000
204	CS	11	CO FLD SVC GS ARMY	29124G60000
208	CS	11	CO HEAVY MAT SUPPLY GS	29127G60000
210	CS	44	CO HVY MAT SUPPLY COMMZ	29127G60000
212	CS	11	CO ACFT+MSL REPAIR PTS	29129G80000
214	CS	44	CO ACFT+MSL REPAIR PRTS	29129G80000
216	CS	11	CO LT EQP MAINT FASCOM	29134G60000
217	CS	44	CO LT EQP MAINT TASCOM	29134G60000
220	CS	11	HHD MAINT BN FASCOM	29136G70000
223	CS	11	CO HEAVY EQUIP MAINT GS	29137G70000
224	CS	44	CO HEAVY EQUIP MAINT GS	29137G70000
226	CS	11	CO COLL+CLASS (FWD)	29139G80000
228	CS	44	CO COLL+CLASS (COMMZ)	29139G80000
229	CS	11	CO SUP+SVC, ABN DIV	10037G60000
230	CS	11	HHC SPT SVC BN (FASCOM)	29146G80000
231	CS	11	HHC SPT SVC BN (TASCOM)	29146G80000
232	CS	11	CO SUPPLY+SERVICE-DS	29147G80000
233	CS	44	CO SUPPLY+SERVICE (COMMZ)	29147G80000
234	CS	11	CO LT MAINT DS	29207G80000
236	CS	11	CO MAIN SPT	29208G80000
238	CS	11	CO CALIBRATION	29227G70000

<u>DTM NO</u>	<u>BR</u>	<u>L</u>	<u>UNIT DESIGNATION</u>	<u>SRC</u>
240	CS	11	HHC INVENT CONT CNT	29402G81000
242	CS	11	DET MAINT MGT (FASCOM)	29403T62000
244	CS	11	DET MAINT MGT (SPT BDE)	29403T63000
246	CS	11	DET MAINT MGT (ASCOM)	29403T64000
248	CS	11	DET MAINT MGT (TASCOM)	29403T61000
250	CS	11	CO STOCK CONTROL	29404T70000
252	CS	44	CO MAINT SPT (COMMZ)	29427G80000
254	CS	44	CO LABOR SERVICE	29449G70000
256	CS	11	AGCY INVENTORY CONTROL	29502T70000
258	CS	44	CO PROPERTY DISPOSAL	29504G80000
260	CS	11	HHC FIELD DEPOT	29512T60000
261	CS	11	DET DATA PROCESSING (A)	29550T71000
262	CS	11	DET DATA PROCESSING (B)	29550T72000
269	CS	11	DET MESS TEAM CA/CB	29500G70066
270	EN	11	BN COMBAT ARMY	05035G60000
271	EN	11	CO SEP INF BDE	05107G62000
272	EN	11	HHC COMBAT GP	05052G71000
273	EN	11	CO SEP LT INF BDE	05107T50000
274	EN	11	CO LT EQUIP	05058G70000
275	EN	11	CO LT EQUIP AIRBORNE	05054G70000
276	EN	11	CO MOBILE ASSAULT BRD	05064G80000
278	EN	11	CO PANEL BRIDGE	05077G70000
279	EN	11	TM MC ADM SQUAD	05570G7MC01
280	EN	11	CO FLOAT BRIDGE	05078G60000
281	EN	11	TM MB ADM LIAISON	05570G7MB01
282	EN	11	HHC BDE COMBAT ARMY	05101G81000
283	EN	11	TM MA ADM PLAT HQ	05570G7MA01
284	EN	11	HHC CONSTRUCTION BDE	05111G80000
286	EN	11	HHC CONSTRUCTION GROUP	05112G70000
288	EN	11	CO CONSTRUCTION SUPPORT	05114G70000
289	EN	11	BN AIRBORNE (C)	05195T50000
290	EN	11	BN CONSTRUCTION	05115G70000
291	EN	11	TM IA SURVEY	05540G71A01
292	EN	11	CO DUMP TRUCK	05124G60000
293	EN	11	CO SEP MECH/ARMD BDE	05127G62000
294	EN	11	CO PORT CONSTRUCTION	05129G70000
295	EN	11	CO SEP ABN BDE	05137G60000
296	EN	11	BN ARMD/MECH DIV	05145G62000
297	EN	11	BN AM DIV	05215T50000
298	EN	11	BN DIV SUPPORT	05155G62000
299	EN	44	BN AIRBORNE DIV	05025G60000
300	EN	11	CO PIPELINE CONST SPT	05177G80000
302	EN	11	HHC COMMAND	05201T80000
306	EN	11	BN TOPO ARMY	05305G60000
308	EN	11	CO TOPO CORPS	05327G60000
310	EN	44	CO B MAP DEPOT	05344G60000
312	EN	44	SHD BASE TOPO BN	05346G70000
314	EN	44	CO BASE REPRODUCTION	05347G70000
316	EN	44	CO BASE SURVEY	05348G70000
318	EN	44	CO BASE PHOTOMAP	05349G80000

<u>DTM NO</u>	<u>BR</u>	<u>L</u>	<u>UNIT DESIGNATION</u>	<u>SRC</u>
319	EN	11	CO WATER SUPPLY	05067G80000
322	EN	11	TM FA FIREFIGHTING	05510G7FA01
323	EN	11	TM GC CO2+DRY ICE	05520G8GC01
234	EN	11	TM FB FIRETRUCK	05510G7FB01
325	EN	11	TM HE UTILITIES (2,500)	05530G7HE01
326	EN	11	TM FC WATER TRUCK	05510G7FC01
327	EN	11	TM HG UTILITIES-10,000	05530G7HG01
329	EN	11	TM GD QUARRY+ROCK CRUSH	05520G8GD01
330	EN	11	TM GA FORESTRY	05520G8GA01
331	EN	11	SEC, ENGR STAFF (CORPS)	05101G82009
332	EN	11	TM GE WELL DRILLING	05520G8GE01
333	EN	11	TM GF WELL DRILL ABN	05520G8GF01
334	EN	11	TM GG WATER PURIF	05520G8GG01
335	EN	11	TM GH WATER PURIF, GPH	05520G8GH01
336	EN	11	TM GJ H2O TRNS 5,000 GL	05520G8GJ01
337	EN	11	TM GI H2O DST 250 GPH	05520G8GI01
340	EN	11	TM GB GAS PRODUCTION	05520G8GB01
344	EN	11	TM HF UTIL (4,000)	05530G7HF01
345	EN	11	TM HH PWR PLT OP+MAINT	05530G7HH01
346	EN	11	TM HI EN FLT PWR PLT	05530G7HI01
348	EN	11	TM HA DIVING	05530G7HA01
349	EN	11	TM HB PIPELINE DESIGN	05530G7HB01
350	EN	11	TM HD WELDING	05530G7HD01
351	EN	11	TM HC REAL ESTATE	05530G7HC01
352	EN	11	TM HJ POWERLINES	05530G7HJ01
357	EN	11	TM IB GEODETIC SURVEY	05540G8IB01
359	EN	11	TM FD BRUSH FIRE TRK	05510G7FD01
360	EN	11	TM IF PHOTOMAP	05540G7IF01
362	EN	11	PLAT IG MAP REPRO	05540G7IG01
364	EN	11	TM IH MAP DISTRIBUTION	05540G7IH01
368	EN	11	TM IJ TERRAIN	05540G7IJ01
370	EN	11	TM JA DREDGE (12-16)	05550G7JA00
372	EN	11	TM JB DREDGE (18-24)	05550G7JB00
374	EN	11	TM JC SEGNG HOPR 5-9,000	05550G7JC00
376	EN	11	TM JD SEAGNG HOPR (3,000)	05550G7JD00
377	EN	11	TM JE SEAGNG HOPPER	05550G7JE00
378	FI	11	CO DS	14017G80000
380	FI	11	AGCY GENERAL SERVICE	14004G80000
382	JA	11	TM AB HQ	27500G6AB01
384	JA	11	TM AA HQ	27500G6AA01
386	JA	11	TM FC CLAIM ADJ	27500G6FC01
388	JA	11	TM FB CLAIM CON ADJ	27500G6FB01
390	JA	11	TM FA CLAIM INVES	27500G6FA01
392	JA	11	TM HB GEN CM TRIAL	27500G6HB01
394	JA	11	TM HA GEN CM	27500G6HA01
396	JA	11	TM IA LEGAL ASST	27500G6IA01
398	JA	11	TM IB LEGAL ASST	27500G6IB01
400	JA	11	TM JA CONTRACT LAW	27500G6JA01
402	JA	11	TM JB PROPERTY LAW	27500G6JB01
404	JA	11	TM JC FRAUDS	27500G6JC01

<u>DTM NO</u>	<u>BR</u>	<u>L</u>	<u>UNIT DESIGNATION</u>	<u>SRC</u>
406	JA	11	TM JE FISCAL	27500G6JE01
408	JA	11	TM JD LABOR RELATIONS	27500G6JD01
410	JA	11	TM GB WAR CRIME	27500G6GB01
411	JA	11	TM GA WAR CRIME INVES	27500G6GA01
412	LG	11	HHC AREA SPT GROUP	54422G80000
413	LG	11	HHC S+M COMMAND	54312T80000
414	LG	11	HHC FASCOM HQ	54012T50000
415	LG	11	HHC AREA SPT COMMAND	54402T80000
416	LG	11	HHC SPT BDE HQ (ARMY)	54022T50000
417	LG	11	HHC SPT BDE HQ (CORPS)	54022T50000
418	LG	11	HHC TASCOS HQ	54202D00000
419	MD	11	BN AM DIV	08025T50000
420	MD	11	BN DIV	08035G60000
421	MD	11	BN AIRBORNE DIV	08065G60000
422	MD	11	CO HOLDING	08057G70000
424	MD	11	HHC MED COMMAND	08111T60000
426	MD	11	HHD BDE	08112G60000
428	MD	11	HHD GP	08122G61000
430	MD	11	HHD BN	08126G60000
431	MD	11	DET RE BUS AMB	08500G6RE01
432	MD	11	CO AMBULANCE	08127G60000
433	MD	11	TRAIN AMB RAIL	08520G70000
434	MD	11	CO CLEARING	08128G60000
436	MD	11	CO COLLECTING	08129G70000
438	MD	11	CO AIR AMBULANCE	08137G60000
440	MD	11	CO ACR	08147G60000
442	MD	11	DEP COMMZ	08187G80000
444	MD	11	UNIT PVNT SVC FIELD	08204G70000
446	MD	11	HHD AH HOSP CEN	08500G6AH01
448	MD	11	TM MA DISP	08500G6MA01
450	MD	11	TM MC DISP GEN	08500G6MC01
452	MD	11	TM MB DISP GEN	08500G6MB01
454	MD	11	HHD AJ BLOOD BANK SVC	08500G6AJ01
456	MD	11	TM AG HQ PROF MED SVC	08500G6AG01
457	MD	11	DET QA INTELLIGENCE	08500G6QA01
458	MD	11	DET AI HQ DENTAL SERV	08500G6AI01
459	MD	11	DET PA ILLUSTRATION	08500G6PA01
460	MD	11	DET AF HQ PROF SVC-VET	08500G6AF01
462	MD	11	DET OA MEDICAL	08500G6OA01
464	MD	11	DET RB AMBULANCE	08500G6RB01
466	MD	11	DET NB COLL BLOOD	08500G6NB01
468	MD	11	DET NC BLOOD DISTR	08500G6NC01
470	MD	33	DET NA BLOOD PROC	08500G6NA01
472	MD	11	DET KL DENTAL LAB	08500G6KL01
476	MD	11	DET KJ DENTAL SERVICE	08500G6KJ01
478	MD	11	DET RA HEL AMB	08500G6RA01
480	MD	11	DET RC HEL AMB RESCUE	08500G6RC01
482	MD	11	DET KD MAX FAC	08500G6KD01
484	MD	11	DET KE NEUROSURGICAL	08500G6KE01
486	MD	11	DET KB ORTHOPEDIC	08500G6KB01

<u>DTM NO</u>	<u>BR</u>	<u>L</u>	<u>UNIT DESIGNATION</u>	<u>SRC</u>
488	MD	11	DET KO PSYCHIATRIC	08500G6K001
490	MD	11	DET KP R-E METABOLISM	08500G6KP01
492	MD	11	DET KA SURGICAL	08500G6KA01
494	MD	11	DET JB VET SVC LARGE	08500G6JB01
496	MD	11	DET KF THORACIC	08500G6KF01
498	MD	11	DET KG TRMT CHEM	08500G6KG01
500	MD	11	DET VET SVC ANIMAL HOSP	08500G6ID01
502	MD	11	DET JA VET SVC SMALL	08500G6JA01
504	MD	11	DET KH DENTAL X-RAY	08500G6KH01
506	MD	11	HOSP FIELD	08510G70000
508	MD	44	HQ HOSP FIELD PW	08510G70000
510	MD	11	HOSP GEN 1,000 BED	08551G70000
511	MD	11	HOSP STA 100 BED	08563G80000
512	MD	11	HOSP STA 300 BED	08565G70000
513	MD	11	HOSP STA 200 BED (COMMZ)	08564G80000
514	MD	11	HOSP STA 500 BED (COMMZ)	08566G70000
518	MD	11	HOSP SURGICAL MOBILE A	08571G70000
520	MD	11	HOSP EVAC SEMIMOBILE	08581G80000
522	MD	11	HHD CONVALESCENT CENTER	08590G80000
524	MD	11	LAB	08650G80000
526	MD	11	DEP ARMY	08667G80000
528	MH	11	MILITARY HISTORY	20017G70000
529	MI	11	CENSORSHIP NE	30600G80F01
530	MI	11	BN AIR RECON SPT FLD A	30005G60000
532	MI	11	DET ACR/SEP IN BDE	30014G60000
534	MI	11	CO DIV (ARMD/MECH)	30017G81000
536	MI	11	DET CORPS	30018G71000
538	MI	11	BN FIELD ARMY	30025G70000
540	MI	11	HHC GP (CT) (ASCOM)	30066G80000
541	MI	11	CC (CT) (ASCOM)	30067G80000
542	MI	11	DET CENT REC FAC (ASCOM)	30068G80000
544	MI	11	GP THEATER ARMY	30600D90106
545	MI	11	DET SP FORCES GP	30500D90066
546	MI	11	TM CENSORSHIP OD	30600D03017
547	MP	11	CO ABN DIV	19067G60000
548	MP	11	CO DIV SPT	19027G60000
549	MP	11	CO AM DIV	19087T50000
550	MP	11	CO ESCORT GUARD	19047G60000
552	MP	11	HHD BN	19076G80000
554	MP	11	CO SEPARATE	19077G81000
556	MP	11	CO PHYSICAL SECURITY	19097G72000
558	MP	11	CO PW PROCESS	19237G60000
560	MP	11	CO GUARD	19247G80000
562	MP	11	PLAT GUARD	19247G80066
564	MP	11	HHC PW CAMP	19256G71000
566	MP	11	HHD BRIGADE	19262G60000
567	MP	11	HHC COMD POW	19252G70000
568	MP	11	HHC PW BDE	19282G80000
570	MP	11	BN STKD/REHAB TRNG CEN	19316G70000
572	MP	11	HHD BN (TEAM AD)	19500G7AD01

<u>DTM NO</u>	<u>BR</u>	<u>L</u>	<u>UNIT DESIGNATION</u>	<u>SRC</u>
574	MP	11	PLAT DOG	19500G70066
576	MP	11	DET MC CONF FAC	19500G7MC01
577	MP	11	DET STKD, COMPOSITE	19500G70066
578	MP	11	DET LD CRIME LAB	19500G7LD01
580	MP	11	DET LA DRIM INVES	19500G7LA01
582	MP	11	DET LB CRIM INVES	19500G7LB01
584	MP	11	DET LC CRIM INVES	19500G7LC01
586	MP	11	HHC PW/CIV INT INFO CEN	19503G70000
588	OD	11	HHC AMMO GROUP (FASCOM)	09022G70000
589	OD	11	HHC AMMO GROUP (TASCOM)	09022G70000
590	OD	11	HHC AMMO BN (FASCOM)	09086G70000
591	OD	11	HHC AMMO BN (TASCOM)	09086G70000
594	OD	11	CO AMMO DS-GS (FASCOM)	09017G70000
595	OD	11	CO AMMO DS-GS (TASCOM)	09038G70000
596	OD	55	CO AMMO DS-GS (TASCOM)	09017G70000
598	OD	11	CO SP AMMO DS	09047G70000
600	OD	11	CO SP AMMO GS (FASCOM)	09048G80000
601	OD	11	CO SP AMMO GS (TASCOM)	09048G80000
602	OD	11	CO GM MAINT (FASCOM)	09048G80000
603	OD	11	CO GM MAINT (TASCOM)	09048G80000
604	OD	11	CO TIRE REPAIR	09117G60000
606	OD	55	CO TIRE REPAIR	09117G60000
607	OD	11	DET SM MSL MNT SPT (EB)	09550T70006
610	OD	11	DET KA EXPL DSP FASCOM	09520G8GA01
611	OD	11	DET KA EXPL DSP TASCOM	09520G8GA01
612	OD	11	DET KC EOD CONTROL	09520G8GB01
613	OD	11	DET MUNIT SAFETY CON	09520G8GC01
614	PI	11	TM AE PRESS CAMP HQ	45500G8AE01
616	PI	11	TM FA OPS	45500G8FA01
618	PI	11	TM FP OPERATIONS	45500G8FB01
620	PI	11	DET FLD PRESS CENS AB	45500G8AB01
622	PI	11	DET FLD PRESS CENS BA	45510G8BA01
624	PI	11	DET COMD INFORMATION	45520G80066
625	PO	11	HHC PSYOP GROUP	33500G60066
626	PO	11	BN PSYOP (STRATEGIC)	33500G60066
628	PO	11	BN PSYOP CONSOLDTION	33500G60066
629	PO	11	BN PSYOPS (TACTICAL)	33500G60066
630	PO	11	CO PSYOP (TACTICAL)	33500G60066
631	PO	11	BN PSYOP (TACTICAL)	33500G60066
632	QM	11	HHD PETRL GROUP	10202G70000
634	QM	11	HHC PETRO OP BN	10206G70000
636	QM	11	CO PETRL OP	10207G70000
638	QM	11	HHC PETRL SUP BN ARMY	10226G80000
640	QM	11	HHC PETRL SUP BN CORPS	10226G80000
642	QM	11	CO PETRL SUP ARMY	10227G80000
644	QM	11	CO PETRL SUP CORPS	10227G80000
646	QM	11	HHC GRAVES REG GP	10292G80000
648	QM	11	HHC GRAVES REG BN	10296G81000
650	QM	44	CO GRAVES REGISTRATION	10297G80000
652	QM	22	CO AIR DROP SUPPLY	10407G60000

<u>DTM NO</u>	<u>BR</u>	<u>L</u>	<u>UNIT DESIGNATION</u>	<u>SRC</u>
653	QM	44	CO AIR DELIVERY	10407G60000
654	QM	44	CO AIRDROP EQP REP+SUP	10417G70000
655	QM	11	CO AIR EQUIP SPT CO ABN	10337G60000
656	QM	44	CO LAUNDRY + RENOV	10437G80000
658	QM	11	DET BA SALES, MOBILE	10500G7BA01
660	QM	11	DET BB SALES, SEMIMOBILE	10500G7BB01
662	QM	11	DET BC SALES, SUPPLY	10500G7BC01
663	QM	11	DET SALES DET (BA/BB/BC)	10500G70066
664	QM	11	DET DRY CLEANING	10500G7FG01
666	QM	11	DET LAUNDRY	10500G7FA01
668	QM	11	DET CLOTHING EX + BATH	10500G7FK01
670	QM	11	DET KC PETRL LAB MOBILE	10500G7JC01
671	SC	11	PLT FWD ARER	11038G60000
672	SC	11	BN CORPS	11015G71000
673	SC	11	CO CONSTRUCTION	11027G60000
675	SC	11	HHC CONSTRUCTION BN	11026G60000
676	SC	11	BN DIV SUPPORT	11035G60000
677	SC	11	BN AM DIV	11205T50000
678	SC	11	BN ARMY CMD SIGNAL RAD+CAB	11075G71000
679	SC	11	BN ABN DIV	11215G60000
680	SC	11	BN COMBAT AREA	11085G80000
681	SC	11	CO ABN SF GROUP	11247G80000
682	SC	11	BN ARMY COMD OPERATIONS	11095G70000
683	SC	11	HHD BATTALION	11116G60000
684	SC	11	HHC FLD ARMY SIG BDE	11102G70000
685	SC	11	CO RADIO RELAY	11377G60000
686	SC	11	CO SUPPORT	11117G72000
687	SC	11	DET CRYPTO	29640G80066
688	SC	11	HHD GP TH ARMY W/AUG	11122G72000
690	SC	11	CO MEDIUM HQ OP	11127G70000
692	SC	51	CO COMMCEN OPERATIONS	11137G70000
694	SC	11	CO SMALL HQ OP	11147G70000
696	SC	11	HHC TH AREA SIGNAL OP COMD	11302T60000
698	SC	11	CO RADIO OPERATIONS	11303G70000
700	SC	11	CO LARGE HQ OPERATIONS	11327G70000
701	SC	11	CO CABLE CONSTR	11047G70000
702	SC	11	BN OPERATION	11345G60000
703	SC	11	HHC CABLE CONST BN	11046G70000
704	SC	11	CO MESSENGER	11358G70000
706	SC	11	CO TROPO (LIGHT)	11367G80000
708	SC	11	CO TROPO (HEAVY)	11368G80000
710	SC	11	CO PICTORIAL	11500G80000
712	SC	11	CO STRATEGIC COMMAND	11345G60000
716	TC	11	HHC TRANSPORTATION COMD	55002T70000
717	TC	11	HHC MOTOR TRANS BDE	55011G80000
718	TC	11	AGCY MOVEMENT CONTROL	55004T60000
720	TC	11	HHD MOV CON CENTER	55006G80000
722	TC	11	CO MOV CON SPT BDE	55007T70000
724	TC	11	HHD MTR TRANS GP	55012G70000
726	TC	11	HHD BN MTR TRANS FASCOM	55016G70000

<u>DTM NO</u>	<u>BR</u>	<u>L</u>	<u>UNIT DESIGNATION</u>	<u>SRC</u>
727	TC	11	HHD BN MTR TRANS TASCUM	55016G70000
728	TC	11	CO LT TRK 5 TON	55017G62000
730	TC	11	CO MDM TRK PETRL (FWD)	55018G62000
734	TC	11	CO MDM TRK CARGO (DIV)	55018G61000
735	TC	11	CO MDM TRK CARGO (REAR)	55018G61000
736	TC	44	CO MDM TRK CARGO (REAR)	55018G61000
737	TC	11	CO HEAVY TRUCK (REAR)	55028G60000
738	TC	11	CO MDM TRK REEFER	55018G63000
740	TC	11	CC MDM TRK PETRL (REAR)	55018G62000
741	TC	11	DET CAR SQUAD	55540G80000
742	TC	11	CO CAR (FWD)	55019G71000
743	TC	44	CO CAR (REAR)	55019G71000
744	TC	11	CO HEAVY TRUCK (FWD)	55028G60000
745	TC	44	CO HEAVY TRUCK (REAR)	55028G60000
746	TC	11	CO TAC CARRIER	55047T50000
748	TC	11	HHC BDE	55062G80000
750	TC	11	HHC ACF MAINT SPT GS BN	55456G80000
752	TC	11	CO LT/MDM TRK (FWD)	55067G60000
753	TC	44	CO LT/MDM TRK (TASCUM)	55067G60000
754	TC	44	CO LT/MDM TRK (COMMZ)	55067G60000
755	TC	11	HHC TERMINAL BDE	55111G70000
756	TC	11	HH TERMINAL GROUP	55112G80000
758	TC	11	HH TERMINAL BN	55116G80000
760	TC	11	CO TERMINAL SERVICE	55117G60000
762	TC	44	CO TERMINAL SERVICE	55117G60000
764	TC	11	CO TERMINAL TRF (FASCOM)	55118G60000
765	TC	44	CO TERMINAL TRF (TASCUM)	55118G60000
766	TC	11	CO MEDIUM BOAT	55128G70000
768	TC	11	CO HEAVY BOAT	55129G70000
770	TC	11	CO LIGHT AMPHIBIAN	55138G80000
772	TC	11	CO MEDIUM AMPHIBIAN	55139G70000
776	TC	11	CO FLT CRAFT+MAINT GS	55157G80000
778	TC	11	HHC RAILWAY GROUP	55202G70000
780	TC	44	BN RAILWAY	55225G70000
782	TC	44	CO DIESEL LOC REPAIR	55247G80000
784	TC	44	CO RY CAR REPAIR GS	55248G80000
786	TC	11	CO ACFT DIR SPT	55457G60000
787	TC	11	BN ACFT DEP MNT (SEABR)	55465G80000
788	TC	11	CO ACFT MAINT GS (FWD)	55458G70000
789	TC	11	BN ACFT MAINT+SUP-AM DIV	55405T50000
790	TC	11	CO ACFT MAINT GS (REAR)	55458G70000
792	TC	11	CO FLTG CRAFT	55500G70066
794	TC	11	TM GG HGY REG PT (GG)	55540G8GG01
796	TC	11	DET JD TRAN CONTR SUP	55560G7JD01
797	TC	11	DET LIGHTERAGE MNT-DS	55550G70000
798	TC	11	DET JB CARGO DOC	55560G7JB01
800	TC	11	TM GF TLR TRF PT OP	55540G8GF01
901	IN	11	BN INFANTRY	07015G60000
902	IN	11	BN MECHANIZED INFANTRY	07045G60000
903	IN	11	BN AIRBORNE INFANTRY	07035G60000

<u>DTM NO</u>	<u>BR</u>	<u>L</u>	<u>UNIT DESIGNATION</u>	<u>SRC</u>
904	IN	11	BN AIRMOBILE INFANTRY	07055T51000
905	AR	11	BN TANK	17035G60000
906	AR	11	CAV SQD INF/MECH/ARMD DIV	17105G60000
907	AR	11	CAV SQDN, AIRMOBILE DIV	17095T50000
908	AR	11	CAV SQDN, AIRBORNE DIV	17075G60000
909	AR	11	CAV TRP, SEP I/M/ARMD BDE	17107G60000
910	AR	11	CAV TRP, SEP LT INF BDE	17117G80000
911	AR	11	CAV TRP, SEP ABN BDE	17127G60000
912	AR	11	CAV SQDN (ACR)	17055G61000
913	AR	11	CAV TROOP, AIR (ACR)	17058G60000
914	FA	11	BN 105 TOWED (INF DIV)	06155G60000
915	FA	11	BN 105 TOWED (AM DIV)	06705T51000
916	FA	11	BN 105 T SEP INF BDE	06185G60000
917	FA	11	BN 105 T SEP ABN BDE	06215G60000
918	FA	11	BN 105 T SEP LT INF BDE	06115G80000
919	FA	11	BN 155 SP MECH/ARMD DIV	06365G60000
920	FA	11	BN 155 SP SEP M/ARMD BDE	06375G60000
921	FA	11	BN 155/8 INCH SP (DIV)	06355G60000
922	FA	11	BN HONEST JOHN (DIV)	06175G60000
923	AD	11	BN VULCAN-TOWED	44435H00000
924	AD	11	BN CHAPARRAL-VULCAN	44325T80000
925	AD	11	BN HAWK (MOBILE)	44235G63000
926	FA	11	BN 105 TOWED (NON-DIV)	06405G70000
927	FA	11	BN 155 TOWED (NON-DIV)	06425G60000
928	FA	11	BN 155 SP (NON-DIV)	06455G70000
929	FA	11	BN 8 INCH SP (NON-DIV)	06445G70000
930	FA	11	BN 175 SP (NON-DIV)	06435G70000
931	FA	11	BN HONEST JOHN NON-DIV	06525G70000
932	FA	11	BN LANCE (NON-DIV)	06595T70000
933	FA	11	BN SERGEANT (NON-DIV)	06555G70000
934	FA	11	3N PERSHING (NON-DIV)	06615G80000
935	AD	11	BN HAWK/VUL/CHAP-STRABAD	44225T80000
936	AD	11	BN HAWK - SP	44255T80000
937	AD	11	BN NIKE-HERCULES	44535G70000
938	FA	11	BN 8-IN (DIV)	06395G80000
939	AD	11	CHAPARRAL/VULCAN-TOWED	44725T80000
960	DUMMY	UNIT (1/6048 W+T ME - THEATER)		
961	DUMMY	UNIT (1/6048 W+T ME - COMMZ)		
962	DUMMY	UNIT (1/4160 W+T ME - NON-DIVISIONAL)		
963	DUMMY	UNIT (1/15,000 DIVISIONAL TROOPS)		
964	DUMMY	UNIT (1/15,000 TROOPS NON-DIVISIONAL FIELD ARMY)		
965	DUMMY	UNIT (1/15,000 TROOPS COMMZ)		
966	DUMMY	UNIT (1/80,000 THEATER TROOPS)		
967	DUMMY	UNIT (1/216,000.0 DS ACFT MAINT - DIV)		
968	DUMMY	UNIT (1/21,600 DS ACFT MAINT, ND - FA)		
969	DUMMY	UNIT (1/29,800 GS ACFT MAINT, FA + REAR)		
970	DUMMY	UNIT (1/29,800 GS ACFT MAINT, CORPS FWD)		
971	DUMMY	UNIT FOR COMMZ POL (1,000,000 GAL - ONE DAY)		
972	DUMMY	UNIT - NO. OF ACFT (IN 100-S)		
973	DUMMY	UNIT - EQUIVALENT CORPS IN FORCE		

DTM NOUNIT DESIGNATION

974	DUMMY UNIT - SMALL SIZE THEATRE, LT 100K TROOPS
975	DUMMY UNIT - INTER SIZE THEATRE, 100-500K TROOPS
976	DUMMY UNIT - LARGE SIZE THEATRE, GT 500K TROOPS
977	DUMMY UNIT (UNITS REQUIRED WITH NO FASCOM)
978	DUMMY UNIT (UNITS REQUIRED WITH NO TASCOM)
979	DUMMY UNIT (UNITS REQUIRED WITH NO FIELD ARMY)
980	DUMMY UNIT (BASE UNIT - TERMINAL HANDLING)
981	DUMMY UNIT (BASE UNIT - LINE HAULING - GEN CGO)
982	DUMMY UNIT (1/21,600 DS ACFT MAINT, COMMZ)
983	KEY UNIT FOR CGO MOVEMENT - COMMZ AREA
984	KEY UNIT FOR CGO MOVEMENT - FA SVC AREA
985	KEY UNIT FOR CGO MOVEMENT - CORPS/DIVISION AREA
986	DUMMY UNIT (1,000 BEDS)
999	LAST UNIT CODE

APPENDIX B

Selected Extracts

US Army War College Questionnaire

Army Tasks for the Seventies

Question 2-7.8

"What do you feel are the chances that the United States will be involved in a war where tactical nuclear weapons, but not strategic nuclear weapons, are used in the next 10 years?"

CERTAIN = 10 -1

9

8 -5

7 -1

6 --9

5 ---16

4 ----18

3 -----27

2 -----57

HIGHLY

UNLIKELY =

1 -----178

NUMBER OF RESPONSES

Question 2-13.14

"Both the United States and the Soviet Union have large numbers of battle-field tactical nuclear weapons in Western Europe. Each has indicated that these weapons will be used only if the other side employs them first. If war were to occur in Western Europe, what do you feel are the chances that tactical nuclear weapons will be used?"

<u>CERTAIN</u>	=	10	-----	23
		9	-----	43
		8	-----	36
		7	-----	21
		6	-----	7
		5	-----	47
		4	-----	23
		3	-----	37
		2	-----	24
<u>HIGHLY UNLIKELY</u>	=	1	-----	48

NUMBER OF RESPONSES

Question 2-59

"If any of the following countries are invaded by outside military forces and have requested our help, the United States should: (Place appropriate letter in blank next to country.)

1. Use military forces to extend all needed help, including nuclear weapons if necessary.
2. Use military force to extend all needed help, but avoid use of nuclear weapons.
3. Provide help, but short of US military involvement.
4. Stay out.

WEST GERMANYCHOICE NUMBER

1 -----121
 2 -----149
 3 -----34
 4 -4

NUMBER OF RESPONSES

Question 2-46

"If the United States is involved in a major war (one in which the survival of the United States is at stake) in the next 10 years, it is most likely to take place in:

COUNTRY

North America	-----15
South America	----10
Africa	-2
Europe	-----84
Northeast Asia	-----12
Middle East	-----81
South Asia	----10
Worldwide	-----81

NUMBER OF RESPONSES

Question 2-49

"If the United States is involved in a major nonnuclear war in the next 10 years, the most likely principal opponent will be:

COUNTRY

USSR	-----118
Mainland China	-----119
Both of the Above	-----46
Other	-----24

NUMBER OF RESPONSES

BIBLIOGRAPHY

BIBLIOGRAPHY

- Army 75 Report (CAAS-75) (U), Army 75 Unit Reference Book (U), Volume I. US Army Combat Developments Command Institute of Combined Arms and Support, May 1969.
- ATLAS, Documentation and User's Guide, RAC TP-338. McLean, Virginia: Research Analysis Corporation, April 1969.
- Field Manual 100-15, Larger Units, Theater Army-Corps. Department of the Army, December 1968.
- Field Manual 101-10-1, Staff Officer's Field Manual, Organizational, Technical and Logistical Data, Unclassified Data. Department of the Army, July 1971.
- Field Manual 101-10-2, Staff Officer's Field Manual, Organizational, Technical and Logistical Data, Extracts of NonDivisional Tables of Organization and Equipment. Department of the Army, November 1970.
- FOREWON ASOP Exercise, 1970 Report (U). US Army Strategy and Tactics Analysis Group, August 1970.
- FOREWON Force Planning System, Volume I, Basic Report, RAC-R-86. McLean, Virginia: Research Analysis Corporation, 1970.
- Letter, Headquarters, US Army Combat Developments Command Supply Agency to Commanding General, US Army Combat Developments Command Institute of Combined Arms and Support, 24 April 1970, subject: Letter of Transmittal.
- Modular Force Planning System (Battalion Slice), Volume I, System Description. Bethesda, Maryland: Arthur Young and Company, March 1969.
- Modular Force Planning System (MODFPS) Run, BLUME-A, Headquarters, US Army Combat Developments Command, Combat Systems Group, 3 March 1971.
- Reference Book 101-1, Organizational Data for the Army in the Field. US Army Command and General Staff College, 1 April 1971.
- USACDC Study, Echelons Above the Division (U) ACN 16863, Annex K. US Army Combat Developments Command Institute of Combined Arms and Support, January 1970.