

AD No. \_\_\_\_\_

**UNITED STATES ARMY  
COMBAT DEVELOPMENTS COMMAND**

FINAL STUDY

PERSONNEL COMMAND AND ADJUTANT GENERAL OPERATIONS, 1970

ACN: 3132

VOLUME II  
ADJUTANT GENERAL FUNCTIONAL  
SUPPORT TO FASCOM

December 1966



UNITED STATES ARMY COMBAT DEVELOPMENTS COMMAND  
PERSONNEL AND ADMINISTRATIVE SERVICES AGENCY  
FORT BENJAMIN HARRISON, INDIANA 46249

808608

## ACKNOWLEDGEMENT

This study is based upon information gathered and analysis performed primarily by the USACDC Personnel and Administrative Services Agency.

This study is approved by Headquarters, Combat Service Support Group, Combat Developments Command. Information contained in it conforms to the Department of the Army approved doctrine study, "The Administrative Support, Theater Army, 1965-1970 (TASTA-70)."

This study is provided for use as a reference document and is a basis for further development of doctrinal literature (field manuals), tables of organization and equipment, basis of issue, and materiel requirements documents.

Comments concerning the study are invited and should be sent direct to the US Army Combat Developments Command, Personnel and Administrative Services Agency, Fort Benjamin Harrison, Indiana 46249.

MTEL/TOE included herein are representative of the types of organizations required to support TASTA-70 concepts and doctrine. The detailed organizations depicted should be considered as representative but not final inasmuch as MTEL and TOE are subject to change or refinement during normal staffing as draft plan TOE.

PERSONNEL COMMAND AND ADJUTANT GENERAL OPERATIONS, 1970

VOLUME II

ADJUTANT GENERAL FUNCTIONAL SUPPORT  
TO PASCOM ACN: 3132

CONTENTS

<u>TITLE</u>	<u>PAGE</u>
ACKNOWLEDGEMENT -----	i
TABLE OF CONTENTS -----	ii
ABSTRACT -----	iv
SUMMARY -----	v
<b>ANNEXES:</b>	
<b>A</b> <b>MANNING TABLES AND EQUIPMENT LISTS</b> <b>(MTEL FOR ADJUTANT GENERAL UNITS)</b>	
Appendix I - Personnel and Administration Battalion	A-I-1
<b>SECTION I GENERAL</b>	
Appendix II - Headquarters and Headquarters Detachment Personnel and Administration Battalion	A-II-1
<b>SECTION I GENERAL</b>	
<b>SECTION II MTEL</b>	
Appendix III - Personnel Service Company	A-III-1
<b>SECTION I GENERAL</b>	
<b>SECTION II MTEL</b>	
Appendix IV - Administrative Service Detachment	A-IV-1
<b>SECTION I GENERAL</b>	
<b>SECTION II MTEL</b>	

<u>TITLE</u>	<u>PAGE</u>
Appendix V - Army Post Office	A-V-1
SECTION I GENERAL	
SECTION II MTEL	
Appendix VI - Army Band	A-VI-1
Appendix VII - Replacement Regulating Detachment	A-VII
SECTION I GENERAL	
SECTION II MTEL	
Appendix VIII - Special Service Detachment	A-VIII-1
SECTION I GENERAL	
SECTION II MTEL	

## ABSTRACT

The Personnel Command and Adjutant General Operations, 1970 (ACN 3132) is the Personnel and Administrative Services Agency's derivative study for CSSG Study-63-6, The Administrative Support Theater Army (TASTA-70), and is composed of three volumes.

Volume I, Adjutant General Operations, 1970, is a comparison of Adjutant General current and proposed functional systems.

Volume II, Adjutant General Functional Support to Field Army Support Command, provides proposed manning tables and equipment lists for Adjutant General direct support functions.

Volume III, Personnel Command, provides proposed manning tables and equipment lists for Adjutant General and related personnel/administrative general support functions which includes prisoner of war/civilian internee, graves registration, finance, and chaplain activities.

This volume is the second of the three volumes and provides detailed organization and doctrine for Adjutant General direct support functions.

This volume does not include headquarters FASCOM because of duplication. Refer CSSG Study, Headquarters Units, TASTA-70, dated December 1965.

## SUMMARY

### 1. General.

a. Adjutant General Operations during the TASTA-70 time frame are performed by general and direct support activities.

(1) The general support activities are in the Personnel Command, Theater Army Support Command (TASCOM), and provide support to the direct support activities.

(2) The direct support activities are in the Area Support Command (ASCOM) of the TASCOM, and the Army/Corps Support Brigades of the Field Army Support Command (FASCOM), and provide support to organizations and individuals assigned.

b. The purpose of this volume is to present the manning tables and equipment lists of the direct support Adjutant General operations in the Field Army. Adjutant General direct support operations in the ASCOM have been included in USACDCCSSG Study 63-6-2, The Area Support Command, and have not been included in this study to avoid duplication. Initial manuscript material pertaining to organizations and operations have been incorporated into FM 12-2-1 TEST (to be published).

2. Functions. The Adjutant General functions are: personnel, (to include replacements), administration, and morale services (band, postal, and special services).

3. Organization. Direct support personnel, administrative, and morale services are provided by the Personnel and Administration Battalion assigned to each Army/Corps Support Brigade. A type Adjutant General direct support organization was structured for the FASCOM and represents the minimum Adjutant General services necessary to provide direct

personnel, administrative, and morale services support to a 12-division force in accordance with the basic TASTA-70 study (63-6). A comparison of Personnel Service Companies in CO-STAR II and TASTA-70 in the FASCOM is presented below to illustrate the reduction of support to supported ratio.

	CO-STAR II	TASTA-70
a. Total strength of units supported	95,000	240,000
b. Number of Personnel Service Companies	8	4
c. Total strength of Pers Svc Companies	2814	1320
d. Ratio of support to supported	1:34	1:182

The difference in total strength in the paragraph above results from the fact that in CO-STAR the personnel service companies only support combat service support units, while in TASTA-70 the personnel service companies support all combat, combat support, and combat service support units. The total strength of CO-STAR personnel service companies does not include the strength of the administrative machine branch in order to compile a more accurate comparison.

#### 4. Conclusions.

a. That the Adjutant General direct support service units in this study are the minimum required for a theater of operations (12-division force) under the TASTA-70 concept.

b. Training, MOS, and equipment changes required are provided in Volume I, Adjutant General Operations, 1970.

**ANNEX A**

**MANNING TABLES AND EQUIPMENT LISTS**

**ANNEX A**  
**APPENDIX I**  
**PERSONNEL AND ADMINISTRATION BATTALION**

## SECTION I

### GENERAL

1. Title. Personnel and Administration Battalion.

2. Organization. This unit is a flexible organization normally composed of a Headquarters and Headquarters Detachment, Administrative Service Detachment, Band, Personnel Service Company and a variable number of Army Post Offices, Replacement Regulating Detachments, Special Service Detachments, and Finance Direct Support Companies. (See Figure A-I-1).

3. Mission: To provide direct personnel, administrative, financial, and morale services support.

4. Capabilities.

a. This battalion provides the following at full (level 1) strength:

(1) Direct personnel, administrative, financial, and morale (band, postal, and special services) services support to FASCOM Army/Corps Support Brigade and nondivisional units.

(2) Liaison (personnel, administrative, morale, as appropriate) with headquarters supported.

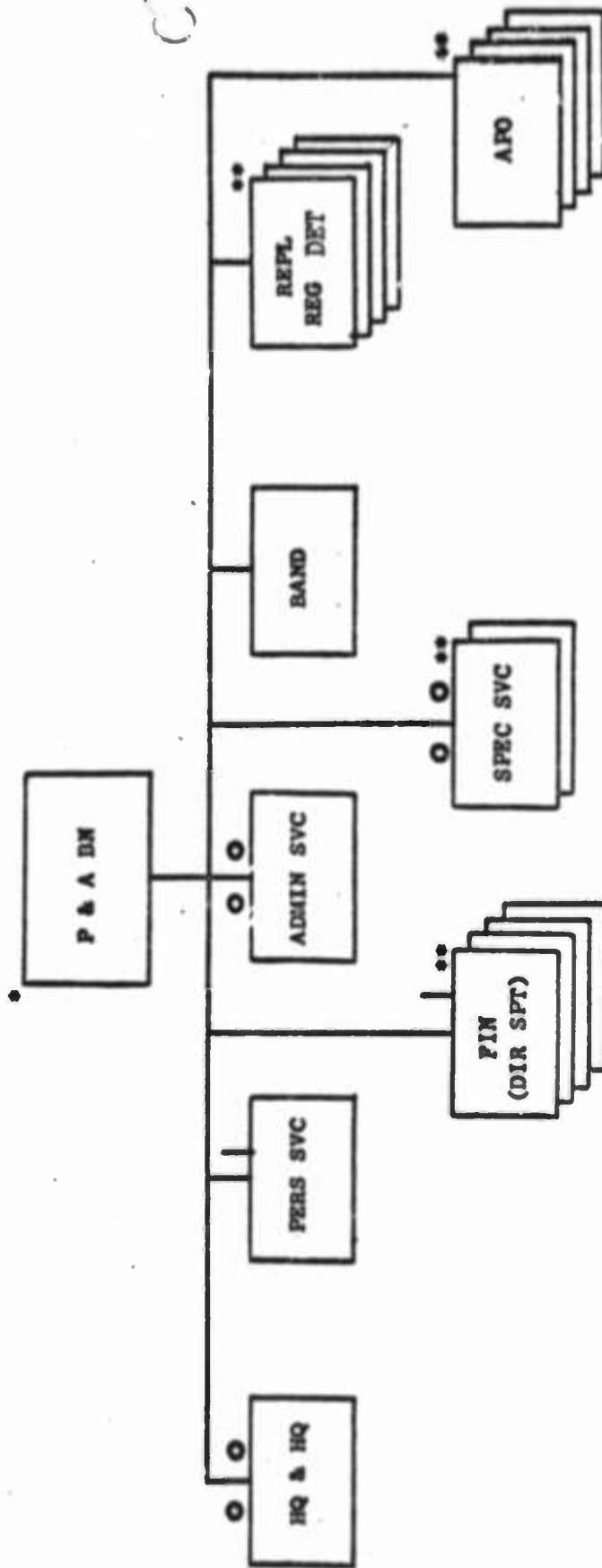
b. This unit is dependent upon other support activities for supplemental motor or air transportation, supplemental signal communications, signal maintenance of organic signal equipment, medical services, and supplemental vehicle maintenance of organic vehicles.

c. The battalion serves as a carrier unit for direct support finance support units as required by the mission of the command to which assigned.

5. Assignment. Army/Corps Support Brigade, FASCOM.

6. Basis of Allocation. One per Army/Corps Support Brigade of the FASCOM when required.

PERSONNEL AND ADMINISTRATION BATTALION, FASCOM



\* The organization with the number of subordinate units shown is a Type Personnel and Administration Battalion only.

\*\* Number of units are in direct proportion to the number of troops serviced.

Figure A-1-1

**ANNEX A**

**APPENDIX II**

**HEADQUARTERS AND HEADQUARTERS  
DETACHEMENT PERSONNEL AND  
ADMINISTRATION BATTALION**

TOE APPLICATION STATEMENT

TOE: 12-66G

Date: To be published.

TITLE: Headquarters and Headquarters Detachment  
Personnel and Administration Battalion

1. The above indicated TOE is applicable to Derivative Study PASA 65-5, Personnel Command and Adjutant General Operations, 1970, ACN 3132.
2. The above indicated TOE will require a routine revision for the following reasons: None.
3. Other studies to which this TOE is applicable are: Derivative Study CSSG 63-6-2, The Area Support Command, ACN 3122.

ANNEX A

APPENDIX III

PERSONNEL SERVICE COMPANY

## SECTION I - GENERAL

1. Title. Personnel Service Company.

2. Organization. The personnel service companies consist of a company headquarters and three functional divisions: personnel management division, personnel actions division, and records division. (See Figure A-III-1).

3. Mission. To act as custodian of and maintain the command individual military personnel records, and to accomplish the personnel actions and services which are attendant upon this responsibility. This service includes that which satisfies the personnel requirements of the individual as well as that which the commanders being supported need to permit them to discharge their personnel management responsibilities.

4. Capabilities.

a. Personnel service companies are of eight types and are designed to support troop strengths as follows:

- (1) Type A - 5,000 (2,500 - 7,499)
- (2) Type B - 10,000 (7,500 - 12,499)
- (3) Type C - 15,000 (12,500 - 17,499)
- (4) Type D - 20,000 (17,500 - 22,499)
- (5) Type E - 25,000 (22,500 - 27,499)
- (6) Type F - 30,000 (27,500 - 32,499)
- (7) Type G - 35,000 (32,500 - 37,499)

(8) Type H - 60,000 (57,500 - 62,499)

- b. This MFL is not adaptable to a Type B organization.
- c. These units are dependent upon other units for chaplain and medical support.
- d. Individuals of these units can engage in effective, coordinated defense of the unit's area or installation.
- e. These units are not adaptable to a reduced strength organization.

5. Assignment. The personnel service company is assigned to and operates under the command and control of the Personnel and Administration Battalion, FASCOM or ASCOM.

6. Basis of Allocation.

- a. As required, based upon the troop support capabilities indicated in paragraph 4 above.
- b. Normally, one Type H support brigade in FASCOM.
- c. One per each mission command and ASCOM, and one for all other units in TASCOM. Total, normally, seven in TASCOM.

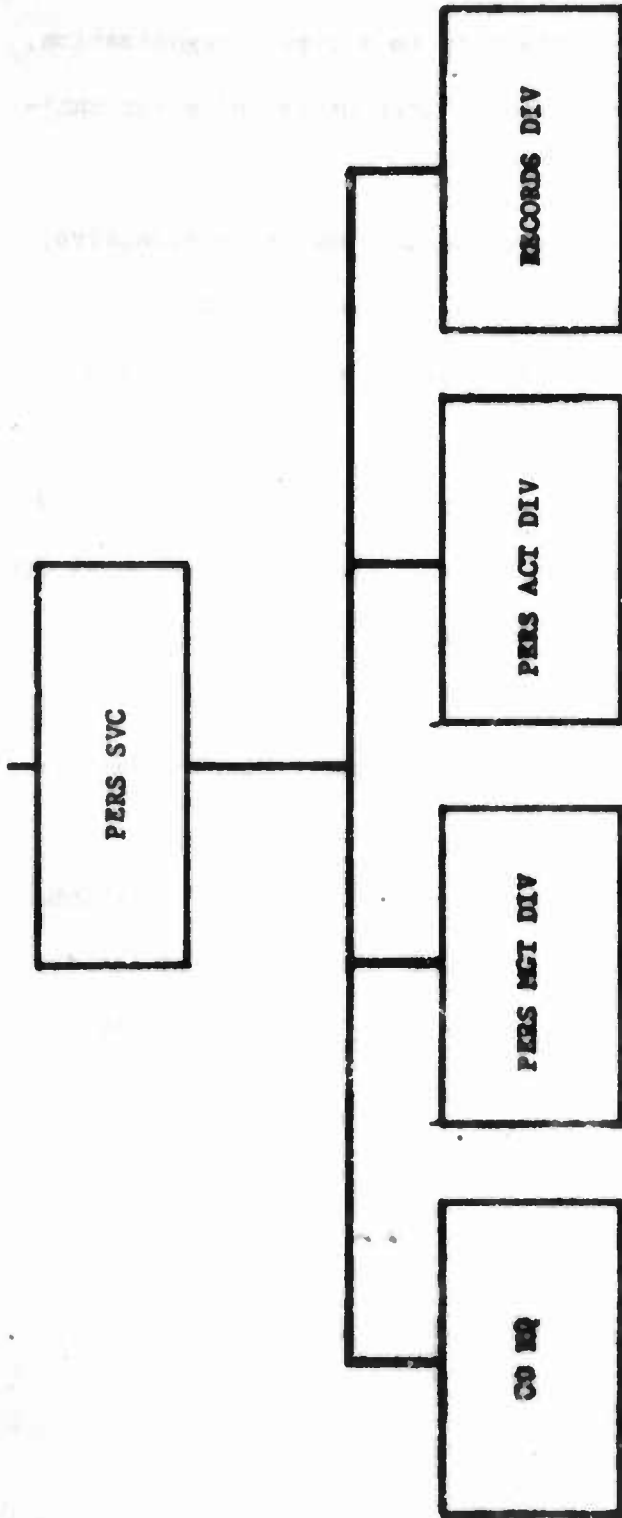


FIGURE 4-377-1 PERSONNEL SERVICE COMPANY

SECTION II

MTEL

NOTE: Units are consolidated A through H for Personnel Service Company and each major division thereof. Justifications are for Type H, but are comparative to Type A through G.

SECTION III  
PERSONNEL SERVICE COMPANY

MTEL 12-67

MANNING TABLE

Type A

	OFF	WO	EM	AGG
SL - 1	1	1	37	39
TE - 2	1	1	37	39
RV - 3	1	1	37	39
E L				
CADRE	1	1	18	20
TYPE B	0	0	0	0

Type A  
 Hq, Personnel Service Company

MTEL 12-67

MANNING TABLE

	OFF	WO	EM	AGG
S L - 1	1	0	11	12
T E - 2	1	0	11	12
R V - 3	1	0	11	12
E L				
CADRE	1	0	5	6
TYPE B	0	0	0	0

Line	Duty Position	Br	MOS	Grade	STR	LEVEL	TYPE B	CADRE	RMKS
					1	2	3		
01	Pers Off	AGC	2200	CPT	1	1	1	0	1 11,27
02	Pers Sgt	NC	71H50	E-9	1	1	1	0	1 40
03	Mess Steward	NC	94B40	E-6	1	1	1	0	1 40
04	Sup Sgt	NC	76K40	E-6	1	1	1	0	1
05	First Cook		94B20	E-5	1	1	1	0	1
06	Clerk Typist		71B30	E-4	1	1	1	0	1
07	Co Clerk		71H20	E-4	1	1	1	0	0
08	Cook		94B20	E-4	1	1	1	0	0
09	Unit Supply Sp		76K20	E-4	1	1	1	0	0
10	Admin Msg Clk		70A10	E-3	1	1	1	0	0 01
11	Cooks Helper		94A10	E-3	1	1	1	0	0 01
12	Mimeo Op		70A10	E-3	1	1	1	0	0 01

Remarks:

- 01 Also light truck driver
- 11 Armed with pistol Cal .45
- 27 Also Unit Commander
- 40 Also 1st Sergeant

**MANNING TABLE**

	OFF	WO	EM	AGG
S L - 1	0	0	9	9
T E - 2	0	0	9	9
R V - 3	0	0	9	9
E L				
CADRE	0	0	4	4
TYPE B	0	0	0	0

Line	Duty Position	Br	MOS	Grade	STR	LEVEL	TYPE B	CADRE	RMKS
					1	2	3		
01	Pers Mgt Supv	NC	71H40	E-7	1	1	1	0	1
02	Sr Pers Mgt Sp		71H30	E-6	1	1	1	0	1
03	Pers Mgt Sp		71H30	E-5	3	3	3	0	1
04	Clerk Typist		71B30	E-4	1	1	1	0	1
05	Asst Pers Mgt Sp		71H30	E-4	3	3	3	0	0

Type A  
 Personnel Actions Division

MTEL 12-67

MANNING TABLE

	OFF	WO	EM	AGG
SL - 1	0	0	7	7
TE - 2	0	0	7	7
RV - 3	0	0	7	7
E L				
CADRE	0	0	4	4
TYPE B	0	0	0	0

Line	Duty Position	Br	MOS	Grade	STR	LEVEL	TYPE B	CADRE	RMKS
					1	2	3		
01	Pers Actions Supv	NC	71H40	E-6	1	1	1	0	1
02	Sr Pers Actions	Sp	71H20	E-5	2	2	2	0	1
03	Clerk Typist		71B30	E-4	1	1	1	0	1
04	Pers Actions	Sp	71H20	E-4	3	3	3	0	1

MANNING TABLE

	OFF	WO	EM	AGG
SL - 1	0	1	10	11
TE - 2	0	1	10	11
FV - 3	0	1	10	11
E				
L				
CADRE	0	1	5	6
TYPE B	0	0	0	0

Line	Duty Position	Br	MOS	Grade	STR LEVEL			TYPE B	CADRE	RMKS
					1	2	3			
01	Chief		711A0	WO	1	1	1		1	
02	Branch Supv	NC	71H40	E-6	1	1	1	0	1	
03	Sr Pers Rclds Sp		71H20	E-5	2	2	2	0	1	
04	Pers Rclds Sp		71H20	E-4	4	4	4	0	2	
05	Clerk Typist		71B30	E-4	2	2	2	0	1	
06	Pers Rclds Asst		70A10	E-3	1	1	1	0	0	

Type B  
Personnel Service Company

MTEL 12-67

MANNING TABLE

	OFF	WO	EM	AGG
SL - 1	2	2	63	67
TE - 2	2	2	63	67
RV - 3	2	2	63	67
E				
L				
CADRE	3	1	30	34

Type B  
Hq, Personnel Service Company

MTEL 12-67

MANNING TABLE

	OFF	WO	EM	AGG
S L - 1	1	0	12	13
T E - 2	1	0	12	13
R V - 3	1	0	12	13
E L				
CADRE	1	0	5	6
TYPE 3	0	0	0	0

Line	Duty Position	Br	MOS	Grade	STR LEVEL			TYPE B	CADRE	RMKS
					1	2	3			
01	Pers Off	AGC	2200	Cpt	1	1	1	0	1	11,27
02	Pers Sgt	NC	71H50	E-9	1	1	1	0	1	40
03	Mess Steward	NC	94B40	E-6	1	1	1	0	1	
04	Sup Sgt	NC	76K40	E-6	1	1	1	0	1	
05	Admin Sp		71H20	E-5	1	1	1	0	1	
06	First Cook		94B20	E-5	1	1	1	0	1	
07	Clerk Typist		71B30	E-4	1	1	1	0	0	
08	Co Clerk		71H20	E-4	1	1	1	0	0	
09	Cook		94B20	E-4	1	1	1	0	0	
10	Unit Supply Sp		76K20	E-4	1	1	1	0	0	
11	Admin Msg Clk		70A10	E-3	1	1	1	0	0	01
12	Cooks Helper		94A10	E-3	1	1	1	0	0	01
13	Repro Mach Op		70A10	E-3	1	1	1	0	0	01

Remarks:

- 01 Also light truck driver
- 11 Armed with pistol Cal .45
- 27 Also Unit Commander
- 40 Also 1st Sgt

MANNING TABLE

	OFF	WO	EM	AGG
SL - 1	0	1	11	12
TR - 2	0	1	11	12
RV - 3	0	1	11	12
E L				
CADRE	1	0	5	6
TYPE B	0	0	0	0

Line	Duty Position	Br	MOS	Grade	STR LEVEL			TYPE B	CADRE	RMKS
					1	2	3			
01	Chief		711A0	WO	1	1	1	0	1	
02	Pers Actions Supv	NC	71H40	E-6	1	1	1	0	1	
03	Sr Pers Actions	Sp	71H20	E-5	3	3	3	0	1	
04	Clerk Typist		71B30	E-4	1	1	1	0	1	
05	Pers Actions	Sp	71H20	E-4	6	6	6	0	2	

MANNING TABLE

	OFF	WO	EM	AGG
SL - 1	1	0	17	18
TE - 2	1	0	17	18
RV - 3	1	0	17	18
E				
L				
CADRE	1	0	6	7
TYPE B	0	0	0	0

Line	Duty Position	Br	MOS	Grade	STR	LEVEL	TYPE B	CADRE	RMKS
					1	2	3		
01	Chief	AGC	2210	Cpt	1	1	1	0	1
02	Pers Mgmt Supv	NC	71H40	E-7	1	1	1	0	1
03	Asst Pers Mgmt Supv	NC	71H40	E-6	1	1	1	0	1
04	Sr Pers Mgmt Sp		71H30	E-6	2	2	2	0	1
05	Pers Mgmt Sp		71H30	E-5	6	6	6	0	1
06	Clerk Typist		71B30	E-4	2	2	2	0	1
07	Asst Pers Mgmt Sp		71H30	E-4	5	5	5	0	1

Typa B  
Records Division

MTEL 12-67

MANNING TABLE

01	OFF	WO	EM	AGG
1	0	1	23	24
2	0	1	23	24
3	0	1	23	24
CADRE	1	0	15	16
TYPE B	0	0	0	0

Line	Duty Position	Br	MOS	Grade	STR LEVEL			TYPE B	CADRE	RMKS
					1	2	3			
01	Chief		711A0	WO	1	1	1	0	1	
02	Rcds Supv	NC	71H50	E-7	1	1	1	0	0	
03	Rcds Proc Supv	NC	71H40	E-7	1	1	1	0	1	
04	Clerk Typist		71B30	E-5	1	1	1	0	1	
05	Sr Pers Rcds Sp		71H20	E-5	5	5	5	0	2	
06	Pers Rcds Sp		71H20	E-4	10	10	10	0	7	
07	Clerk Typist		71B30	E-4	4	4	4	0	3	
08	Pers Rcds Asst		70A10	E-3	1	1	1	0	0	

Type C  
Personnel Service Company

MTEL 12-67

MANNING TABLE

	OFF	WO	EM	AGG
SL - 1	3	2	90	95
TE - 2	3	2	90	95
RV - 3	3	2	90	95
E L				
CADRE	2	2	35	39
TYPE B	0	0	0	0

Type C  
Hq, Personnel Service Company

MTEL 12-67

MANNING TABLE

	OFF	WO	EM	AGG
3 L - 1	2	0	16	18
T E - 2	2	0	16	18
R V - 3	2	0	16	18
E L				
CADRE	1	0	6	7
TYPE B	0	0	0	0

Line	Duty Position	Br	MOS	Grade	STR LEVEL			TYPE B	CADRE	RMKS
					1	2	3			
01	Pers Off	AGC	2200	Maj	1	1	1	0	1	11,27
02	Executive Off	AGC	2200	Lt	1	1	1	0	0	
03	Pers Sgt	NC	71H50	E-9	1	1	1	0	1	40
04	Admin Supv	NC	71L40	E-7	1	1	1	0	1	
05	Mess Steward	NC	94B40	E-6	1	1	1		1	
06	Sup Sgt	NC	76B40	E-6	1	1	1	0	1	
07	Admin Sp		71L20	E-5	1	1	1	0	1	
08	First Cook		94B20	E-5	2	2	2	0	1	
09	Armorer		76K30	E-4	1	1	1	0	0	
10	Clerk Typist		71B30	E-4	1	1	1	0	0	
11	Co Clerk		71H20	E-4	1	1	1	0	0	
12	Cook		94B20	E-4	2	2	2	0	0	
13	Unit Supply Sp		76K20	E-4	1	1	1			
14	Cooks Helper		94A10	E-3	1	1	1			
15	Admin Msg Clk		70A10	E-3	1	1	1	0	0	01
16	Mimeo Op		70A10	E-3	1	1	1	0	0	01

Remarks:

01 Also light truck driver      11 Armed with pistol Cal. 45  
 27 Also Unit Commander      40 Also 1st Sergeant

MANNING TABLE

	OFF	WO	EM	AGG
SL - 1	1	0	23	24
TE - 2	1	0	23	24
RV - 3	1	0	23	24
E L				
CADRE	1	0	7	8
TYPE B	0	0	0	0

Line	Duty Position	Br	MOS	Grade	STR LEVEL			TYPE B	CADRE	RMKS
					1	2	3			
01	Chief	AGC	2210	Cpt	1	1	1	0	1	
02	Pers Mgmt Supv	NC	71H50	E-8	1	1	1	0	1	
03	Asst Pers Mgmt Supv	NC	71H40	E-7	1	1	1	0	1	
04	Sr Pers Mgmt Sp		71H30	E-6	3	3	5	0	1	
05	Pers Mgmt Sp		71H30	E-5	8	8	8	0	1	
06	Clerk Typist		71B30	E-4	2	2	2	0	1	
07	Asst Pers Mgt Sp		71H30	E-4	8	8	8	0	1	

Type C  
 Personnel Actions Division

MTEL 12-67

MANNING TABLE

	OFF	WO	EM	AGG
SL - 1	0	1	16	17
TE - 2	0	1	16	17
RV - 3	0	1	16	17
E			1	
L				
CADRE	0	1	6	7
TYPE B	0	0	0	0

Line	Duty Position	Br	MOS	Grade	STR	LEVEL	TYPE B	CADRE	RMKS
					1	2	3		
01	Chief		711A0	WO	1	1	1	0	1
02	Pers Actions Supv	NC	71H40	E-6	1	1	1	0	1
03	Sr Pers. Act Sp		71H20	E-5	4	4	4	0	1
04	Clerk Typist		71B30	E-4	2	2	2	0	1
05	Pers Actions Sp		71H20	E-4	9	9	9	0	3

Type C  
Records Division

MTEL 12-67

MANNING TABLE

01	OFF	WO	EM	AGG
1	0	1	35	36
2	0	1	35	36
3		1	35	36
CADRE	0	1	16	17
TYPE B	0			

Line	Duty Position	Br	MOS	Grade	STR LEVEL			TYPE B	CADRE	RMKS
					1	2	3			
01	Chief		711A0	WO	1	1	1	0	1	
02	Rcds Div Supv	NC	71H50	E-8	1	1	1	0	0	
03	Rcds Proc Supv	NC	71H40	E-6	1	1	1	0	1	
04	Service Supv	NC	71H40	E-6	1	1	1	0	0	
05	Sr Clerk Typist		71B30	E-5	1	1	1	0	1	
06	Sr Pers Rcds Sp		71H20	E-5	7	7	7	0	3	
07	Clerk Typist		71B30	E-4	6	6	6	0	3	
08	Pers Rcds Sp		71H20	E-4	15	15	15	0	8	
09	Proc Contl Sp		71H20	E-4	1	1	1	0	0	
10	Pers Rcds Asst		70A10	E-3	2	2	2	0	0	

Type D  
Personnel Service Company

MTEL 12-67

MANNING TABLE

	OFF	WO	EM	AGG
SL - 1	4	2	114	120
TE - 2	4	2	114	120
RV - 3	4	2	114	120
E L				
CADRE	2	2	44	48
TYPE B				

A-III-19

MANNING TABLE

	OFF	WO	EM	AGG
S L - 1	2	0	16	18
T E - 2	2	0	16	18
R V - 3	2	0	16	18
E				
L				
CADRE	1	0	5	6
TYPE B	0	0	0	0

Line	Duty Position	Br	MOS	Grade	STR	LEVEL	TYPE B	CADRE	RMKS
					1	2	3		
01	Pers Off	AG	2200	Maj	1	1	1	0	1 11,27
02	XO	AG	2200	Lt	1	1	1	0	0
03	Pers Sgt	NC	71H50	E-9	1	1	1	0	1 40
04	Admin Supv	NC	71L4C	E-7	1	1	1	0	1
05	Mess Steward		94B40	E-6	1	1	1	0	1
06	Sup Sgt	NC	76K40	E-6	1	1	1	0	1
07	Admin Sp		71L20	E-5	1	1	1	0	0
08	First Cook		94B20	E-5	2	2	2	0	1
09	Armorer		76K30	E-4	2	2	2	0	0
10	Clerk Typist		71B30	E-4	1	1	1	0	0
11	Co Clerk		71H20	E-4	1	1	1	0	0
12	Cook		94B20	E-4	2	2	2	0	0
13	Unit Supply Sp		76K20	E-4	1	1	1	0	0
14	Admin Msg Clerk		70A10	E-3	1	1	1	0	0 01
15	Repro Mach		70A10	E-3	1	1	1	0	0 01

**Remarks:**

01	Also light truck driver	11	Armed with pistol Cal. .45
27	Also Unit Commander	40	Also 1st Sergeant

MANNING TABLE

	OFF	WO	EM	AGG
SL - 1	1	0	31	32
TE - 2	1	0	31	32
RV - 3	1	0	31	32
E L				
CADRE	1	0	8	9
TYPE B	0	0	0	0

Line	Duty Position	Br	MOS	Grade	STR	LEVEL	TYPE B	CADRE	RMKS
					1	2	3		
01	Chief	AGC	2210	Cpt	1	1	1	0	1
02	Pers Mgt Supv	NC	71H50	E-8	1	1	1	0	1
03	Asst Pers Mgt Supv	NC	71H40	E-7	1	1	1	0	0
04	Sr Pers Mgt Sp		71H30	E-6	4	4	4	0	1
05	Pers Mgt Sp		71H30	E-5	11	11	11	0	2
06	Clerk Typist		71B30	E-4	3	3	3	0	1
07	Asst Pers Mgt Sp		71H30	E-4	11	11	11	0	3

MANNING TABLE

	OFF	WO	EM	AGG
SL - 1	0	1	21	22
TE - 2	0	1	21	22
RV - 3	0	1	21	22
E L				
CADRE	0	1	8	9
TYPE B	0	0	0	0

Line	Duty Position	Br	MOS	Grade	STR LEVEL			TYPE 3	CADRE	RMIS
					1	2	3			
01	Chief		711A0	WO	1	1	1	0	1	
02	Pers Actions Supv	NC	71H40	E-7	1	1	1	0	1	
03	Asst Pers Act Supv	NC	71H40	E-6	1	1	1	0	0	
04	Sr Pers Actions Sp		71H20	E-5	5	5	5	0	1	
05	Clerk Typist		71B30	E-4	2	2	2	0	1	
06	Pers Actions Sp		71H20	E-4	12	12	12	0	5	

Type D  
Records Division

MTEL 12-67

MANNING TABLE

01	OFF	WO	EM	AGG
1	1	1	46	48
2	1	1	46	48
3	1	1	46	48
CADRE	0	1	23	24
TYPE B	0	0	0	0

Line	Duty Position	Br	MOS	Grade	STR	LEVEL	TYPE B	CADRE	RMKS
					1	2	3		
01	Chief	AG	2200	Cpt	1	1	1	0	0
02	Unit Pers Tech		711A0	WO	1	1	1	0	1
03	Rcds Div Supv	NC	71H50	E-8	1	1	1	0	0
04	Svc Br Supv	NC	71H40	E-7	1	1	1	0	1
05	Rcds Proc Br	NC	71H40	E-7	1	1	1	0	0
	Supv								
06	Rcds Proc Supv	NC	71H40	E-6	2	2	2	0	1
07	Sr Clerk Typist		71B30	E-5	1	1	1	0	1
08	Sr Pers Rcds Sp		71H20	E-5	9	9	9	0	4
09	Clerk Typist		71B30	E-4	7	7	7	0	4
10	Pers Rcd Sp		71H20	E-4	19	19	19	0	11
11	Proc Contl Sp		71H20	E-4	2	2	2	0	1
12	Pers Rcds Asst		70A10	E-3	3	3	3	0	0

Type E  
Personnel Service Company

MTEL 12-67

MANNING TABLE

	OFF	WO	EM	AGG
SL - 1	4	2	138	144
TE - 2	4	2	138	144
RV - 3	4	2	138	144
E L				
CADRE	2	2	55	59
TYPE B	0	0	0	0

Type E  
 Hq, Personnel Service Company

MTEL 12-67

MANNING TABLE

	OFF	WO	EM	AGG
S L - 1	2	2	17	19
T E - 2	2	2	17	19
R V - 3	2	2	17	19
E L				
CADRE	1	0	6	7
TYPE B	0	0	0	0

Line	Duty Position	Br	MOS	Grade	STR	LEVEL	TYPE B	CADRE	RMKS
					1	2	3		
01	Pers Off	AGC	2200	Maj	1	1	1	0	1 11,27
02	XO	AGC	2200	Lt	1	1	1	0	0
03	Pers Sgt	NC	71H50	E-9	1	1	1	0	1 40
04	Admin Supv	NC	71L40	E-7	1	1	1	0	1
05	Mess Steward	NC	94B40	E-6	1	1	1	0	1
06	Sup Sgt	NC	76K40	E-6	1	1	1	0	1
07	Admin Sp		71L20	E-5	2	2	2	0	0
08	First Cook		94B20	E-5	2	2	2	0	1
09	Armorer		76K30	E-4	1	1	1	0	0
10	Clerk Typist		71B30	E-4	1	1	1	0	0
11	Co Clerk		71H20	E-4	1	1	1	0	0
12	Cook		94B20	E-4	2	2	2	0	1
13	Unit Supply Sp		76K20	E-4	1	1	1	0	0 01
14	Admin Msg Clk		70A10	E-3	1	1	1	0	0 01
15	Mimeo Op		70A10	E-3	1	1	1	0	0 01
16	Cook Helper		94A10	E-3	1	1	1	0	0 01

MANNING TABLE

	OFF	WO	EM	AGG
SL - 1	1	0	39	40
TE - 2	1	0	39	40
RV - 3		0	39	40
E L				
CADRE	1	0	10	11
TYPE B	0	0	0	0

Line	Duty Position	Br	MOS	Grade	STR	LEVEL	TYPE B	CADRE	RMKS
					1	2	3		
01	Chief	AGC	2210	Cpt	1	1	1	0	1
02	Pers Mgt Supv	NC	71H50	E-8	1	1	1	0	1
03	Asst Pers Mgt Supv	NC	71H40	E-7	1	1	1	0	0
04	Sr Pers Mgt Sp	NC	71H30	E-6	5	5	5	0	1
05	Pers Mgt Sp		71H30	E-5	14	14	14	0	3
06	Clerk Typist		71B30	E-4	4	4	4	0	1
07	Asst Pers Mgt Sp		71H30	E-4	14	14	14	0	4

Type E  
 Personnel Actions Division

MTEL 12-67

MANNING TABLE

	OFF	WO	EM	AGG
S L - 1	0	1	26	27
T E - 2	0	1	26	27
R V - 3	0	1	26	27
E L				
CADRE	0	1	8	9
TYPE B	0	0	0	0

Line	Duty Position	Br	MOS	Grade	STR	LEVEL	TYPE B	CADRE	RMKS
					1	2	3		
01	Chief		711A0	WO	1	1	1	0	1
02	Pers Actions Supv	NC	71H40	E-7	1	1	1	0	1
03	Asst Pers Actions Supv	NC	71H40	E-6	1	1	1	0	0
04	Sr. Pers Actions Sp		71H20	E-5	7	7	7	0	2
05	Clerk Typist		71B30	E-4	2	2	2	0	1
06	Pers Actions Sp		71H20	E-4	15	15	15	0	4

MANNING TABLE

01	OFF	WO	EM	AGG
1	1	1	56	58
2	1	1	56	58
3	1	1	56	58
CADRE	0	1	31	32
TYPE B	0	0	0	0

Line	Duty Position	Br	MOS	Grade	STR LEVEL			TYPE B	CADRE	RMKS
					1	2	3			
01	Chief	AG	2200	Cpt	1	1	1	0	0	
02	Unit Pers Tech		711A0	WO	1	1	1	0	1	
03	Rcds Div Supv	NC	71H50	E-8	1	1	1	0	0	
04	Proc Br Supv	NC	71H40	E-7	1	1	1	0	0	
05	Services Br Supv	NC	71H40	E-7	1	1	1	0	1	
06	Rcd Proc Supv	NC	71H40	E-6	3	3	3	0	1	
07	Sr Per Rcd Supv	NC	71H40	E-6	1	1	1	0	1	
08	Sr Clerk Typist		71B30	E-5	1	1	1	0	1	
09	Sr Pers Rcd Sp		71H20	E-5	11	11	11	0	6	
10	Clerk Typist		71B30	E-4	8	8	8	0	5	
11	Pers Rcd Sp		71H20	E-4	22	22	22	0	15	
12	Proc Cont Clk		71H20	E-4	3	3	3	0	1	
13	Pers Rcds Asst		70A10	E-3	4	4	4	0	0	

Type F  
Personnel Service Company

MTEL 12-67

MANNING TABLE

	OFF	WO	EM	AGG
SL - 1	5	1	166	172
TE - 2	5	1	166	172
RV - 3	5	1	166	172
E L				
CADRE	3	1	72	76
TYPE B	0	0	0	0

A-III-29

MANNING TABLE

	OFF	WO	EM	AGG
SL - 1	2	0	21	23
TE - 2	2	0	21	23
RV - 3	2	0	21	23
E L				
CADRE	1	0	8	9
TYPE B	0	0	0	0

Line	Duty Position	Br	MOS	Grade	STR LEVEL			TYPE B	CADRE	RMKS
					1	2	3			
01	Pers Off	AGC	2200	Maj	1	1	1	0	1	11,27
02	XO	AGC	2200	Lt	1	1	1	0	1	
03	Pers SMAJ	NC	71H50	E-9	1	1	1	0	1	
04	1 SGT	NC	71L50	E-8	1	1	1	0	1	
05	Admin Supv	NC	71L40	E-7	1	1	1	0	1	
06	Mess Steward	NC	94B40	E-6	1	1	1	0	1	
07	Sup Sgt	NC	76K40	E-6	1	1	1	0	1	
08	Admin Sp		71L20	E-5	2	2	2	0	1	
09	First Cook		94B20	E-5	3	3	3	0	1	
10	Armorer		76K30	E-4	1	1	1	0	0	
11	Clerk Typist		71B30	E-4	2	2	2	0	0	
12	Co Clerk		71H20	E-4	1	1	1	0	0	
13	Cook		94B20	E-4	3	3	3	0	0	
14	Unit Supply Sp		76K20	E-4	1	1	1	0	0	01
15	Admin Msg Clerk		70A10	E-3	1	1	1	0	0	01
16	Mimeo Op		70A10	E-3	1	1	1	0	0	01
17	Cooks Helper		94A10	E-3	1	1	1	0	0	01

MANNING TABLE

	OFF	WO	EM	AGG
S L - 1	1	0	47	48
T E - 2	1	0	47	48
R V - 3	1	0	47	48
E				
L				
CADRE	1	0	16	17
TYPE B	0	0	0	0

Line	Duty Position	Br	MOS	Grade	STR	LEVEL	TYPE B	CADRE	RMKS
					1	2 3			
01	Chief	AGC	2210	Cpt	1	1 1	0	1	
02	Pers Mgmt Supv	NC	71H50	E-8	1	1 1	0	1	
03	Asst Pers Mgt Supv	NC	71H40	E-7	1	1 1	0	1	
04	Sr Pers Mgt Sp		71H30	E-6	6	6 6	0	1	
05	Pers Mgmt Sp		71H30	E-5	18	18 18	0	6	
06	Clerk Typist		71B30	E-4	4	4 4	0	1	
07	Asst Pers Mgt Sp		71H30	E-4	17	17 17	0	6	

MANNING TABLE

	OFF	WO	EM	AGG
SL - 1	1	0	31	32
TE - 2	1	0	31	32
RV - 3	1	0	31	32
E L				
CADRE	1	0	12	13
TYPE B	0	0	0	0

Line	Duty Position	Br	MOS	Grade	STR LEVEL			TYPE B	CADRE	RMKS
					1	2	3			
01	Chief	AGC	2200	Capt	1	1	1	0	1	
02	Pers Actions Supv	NC	71H40	E-7	1	1	1	0	1	
03	Asst Pers Actions Supv	NC	71H40	E-6	2	2	2	0	1	
04	Sr Pers Actions Sp		71H20	E-5	8	8	8	0	3	
05	Clerk Typist		71B30	E-4	3	3	3	0	1	
06	Pers Action Sp		71H20	E-4	17	17	17	0	6	

MANNING TABLE

01	OFF	WO	EM	AGG
1	1	1	67	69
2	1	1	67	69
3	1	1	67	69
CADRE	0	1	45	46
TYPE B	0	0	0	0

Line	Duty Position	Br	MOS	Grade	STR	LEVEL	TYPE B	CADRE	RMKS
					1	2	3		
01	Chief	AG	2200	Cpt	1	1	1	0	0
02	Unit Pers Tech		711A0	WO	1	1	1	0	1
03	Rcds Div Supv	NC	71H50	E-8	1	1	1	0	1
04	Svc Br Supv	NC	71H40	E-7	1	1	1	0	1
05	Proc Br Supv	NC	71H40	E-7	1	1	1	0	1
06	Pers Rcd Supv	NC	71H40	E-6	2	2	2	0	1
07	Rcds Proc Supv	NC	71H40	E-6	3	3	3	0	2
08	Sr Clerk Typist		71B30	E-5	2	2	2	0	1
09	Sr Pers Rcds Sp		71H20	E-5	13	13	13	0	7
10	Clerk Typist		71B30	E-4	10	10	10	0	6
11	Pers Rcd Sp		71H20	E-4	27	27	27	0	20
12	Proc Contl Sp		71H20	E-4	3	3	3	0	2
13	Pers Rcds Asst		70A10	E-3	4	4	4	0	1

Type G  
Personnel Service Company

MTEL 12-67

MANNING TABLE

	OFF	WO	EM	AGG
SL - 1	6	3	203	212
TE - 2	6	3	203	212
RV - 3	6	3	203	212
E L				
CADRE	4	1	106	111
TYPE B	0	0	0	0

Type G  
Hq, Personnel Service Company

MTEL 12-67

MANNING TABLE

	OFF	WO	EM	AGG
S L - 1	2	0	24	26
T E - 2	2	0	24	26
R V - 3	2	0	24	26
E L				
CADRE	1	0	9	10
TYPE B	0	0	0	0

PAR 01										
Line	Duty Position	Br	MOS	Grade	STR LEVEL			TYPE B	CADRE	RMKS
					1	2	3			
01	Pers Off	AGC	2200	Maj	1	1	1	0	1	11,27
02	XO	AGC	2200	Lt	1	1	1	0	0	
03	Pers SMAJ	NC	71H50	E-9	1	1	1	0	1	
04	1st Sgt	NC	71L50	E-8	1	1	1	0	1	
05	Admin Supv	NC	71L40	E-7	1	1	1	0	1	
06	Mess Steward	NC	94B40	E-6	1	1	1	0	1	
07	Sup Sgt	NC	76K40	E-6	1	1	1	0	1	
08	Admin Sp		71L20	E-5	3	3	3	0	1	
09	First Cook		94B20	E-5	3	3	3	0	1	
10	Armorer		76K30	E-4	1	1	1	0	0	
11	Clerk Typist		71B30	E-4	3	3	3	0	1	
12	Co Clerk		71H20	E-4	1	1	1	0	0	
13	Sup Clerk		76K20	E-4	1	1	1	0	0	01
14	Cook		94B20	E-4	3	3	3	0	1	
15	Admin Msg Clerk		70A10	E-3	2	2	2	0	0	01
16	Cook Helper		94A10	E-3	1	1	1	0	0	01
17	Reprod Mach Opr		70A10	E-3	1	1	1	0	0	01

MANNING TABLE

	OFF	WO	EM	AGG
SL - 1	2	0	55	57
TE - 2	2	0	55	57
RV - 3	2	0	55	57
E L				
CADRE	1	0	22	23
TYPE B	0	0	0	0

PAR 02										
Line	Duty Position	Br	MOS	Grade	STR LEVEL			TYPE B	CADRE	RMKS
					1	2	3			
01	Chief	AGC	2210	Cpt	1	1	1	0	1	
02	Pers Mgt Off	AGC	2210	Lt	1	1	1	0	0	
03	Pers Mgt Supv	NC	71H50	E-8	1	1	1	0	1	
04	Pers Mgt Supv	NC	71H40	E-7	1	1	1	0	0	
05	Asst Pers Mgt Supv	NC	71H40	E-6	3	3	3	0	2	
06	Sr Pers Mgt Sp		71H30	E-6	6	6	6	0	6	
07	Pers Mgt Sp		71H30	E-5	20	20	20	0	5	
07	Clerk Typist		71B30	E-4	5	5	5	0	3	
08	Asst Pers Mgt Sp		71H30	E-4	15	15	15	0	5	

MANNING TABLE

	OFF	WO	EM	AGG
SL - 1	1	0	36	37
TE - 2	1	0	36	37
RV - 3	1	0	36	37
E L				
CADRE	1	0	16	17
TYPE B	0	0	0	0

PAR 03									
Line	Duty Position	Br	MOS	Grade	STR	LEVEL	TYPE B	CADRE	RMKS
					1	2	3		
01	Chief	AGC	2200	Cpt	1	1	1	0	1
02	Pers Actions Supv	NC	71H40	E-7	1	1	1	0	1
03	Asst Pers Actions Supv	NC	71H40	E-6	2	2	2	0	0
04	Sr Pers Actions Sp		71H20	E-5	9	9	9	0	4
05	Clerk Typist		71B30	E-4	3	3	3	0	1
06	Pers Actions Sp		71H20	E-4	21	21	21	0	10

MANNING TABLE

	OFF	WO	EM	AGG
SL - 1	6	6	314	326
TE - 2	6	6	314	326
RV - 3	6	6	314	326
E L				
CADRE	4	2	99	105
TYPE B	0	0	0	0

MANNING TABLE

	OFF	WO	EM	AGG
S L - 1	1	3	88	92
T E - 2	1	3	88	92
R V - 3	1	3	88	92
E L				
CADRE	1	1	59	61
TYPE B				

PAR 04										
Line	Duty Position	Br	MOS	Grade	STR LEVEL			TYPE B	CADRE	RMKS
					1	2	3			
01	Chief	AGC	2200	Cpt	1	1	1	0	1	11
02	Unit Pers Tech		711A0	WO	3	3	3	0	1	
03	Rcd Div Supv	NC	71H50	E-8	1	1	1	0	1	
04	Branch Supv	NC	71H40	E-7	2	2	2	0	2	
05	Rcd Proc Supv	NC	71H40	E-6	5	5	5	0	4	
06	Sr Pers Rcd Sp		71H20	E-5	19	19	19	0	11	
07	Pers Rcd Sp		71H20	E-4	38	38	38	0	23	
08	Clerk Typist		71B30	E-4	14	14	14	0	9	
09	Proc Cont Clk		71H20	E-4	3	3	3	0	3	
10	Pers Rcds Asst		70A10	E-3	6	6	6	0	1	

Type H  
Personnel Services Company

MTEL 12-67

MANNING TABLE

	OFF	WO	EM	AGG
S L - 1	6	6	314	326
T E - 2	6	6	314	326
R V - 3	6	6	314	326
E L				
CADRE	4	2	99	105
TYPE B	0	0	0	0

Type H  
 Personnel Service Company, Headquarters

MTL, 12-67

MANNING TABLE

	OFF	WO	EM	AGG
S L - 1	2	0	33	35
T E - 2	2	0	33	35
R V - 3	2	0	33	35
E L				
CADRE	1	0	10	11
TYPE B	0	0	0	0

Line	Duty Position	Br	MOS	Grade	STR	LEVEL	TYPE B	CADRE	RMKS
					1	2	3		
01	Pers Officer	AGC	2200	Maj	1	1	1	0	1 11,27
02	XO	AGC	2200	Lt	1	1	1	0	0
03	SMAJ	NC	71H50	E-9	1	1	1	0	1
04	1SGT	NC	71L50	E-8	1	1	1	0	1
05	Admin Supv	NC	71L40	E-7	1	1	1	0	1
06	Mess Steward	NC	94B40	E-6	1	1	1	0	1
07	Supply Sgt	NC	76K40	E-6	1	1	1	0	1
08	Admin Sp		71L20	E-5	4	4	4	0	0
09	First Cook		94B20	E-5	3	3	3	0	1
10	Armorer		76K30	E-4	1	1	1	0	0
11	Clerk Typist		71B30	E-4	6	6	6	0	1
12	Co Clerk		71H20	E-4	1	1	1	0	1
13	Unit Supply Sp		76K20	E-4	1	1	1	0	0
14	Cook		94B20	E-4	3	3	3	0	1
15	Wheel Veh Mech		63B20	E-4	1	1	1	0	1 01
16	Admin Msg Clk		70A10	E-3	4	4	4	0	0 01
17	Cook Helper		94A10	E-3	1	1	1	0	0 01

Type H  
Personnel Service Company, Headquarters (Cont)

Line	Duty Position	Br	MOS	Grade	STR	LEVEL	TYPE B	GADRE	RMKS	
18	Repro Mach Op		70A10	E-3	2	2	2	0	0	01
19	Wh Veh Mech Helper		63A10	E-3	1	1	1	0	0	01

Remarks:

All personnel armed with rifle 7.62 millimeter unless otherwise indicated.  
01 - Also light truck driver  
11 - Armed with pistol Cal .45  
27 - Also Commanding Officer

MANNING TABLE

	OFF	WO	EM	AGG
SL - 1	2	0	92	94
TE - 2	2	0	92	94
RV - 3	2	0	92	94
E L				
CADRE	1	0	29	30
TYPE B	0	0	0	0

Line	Duty Position	Br	MOS	Grade	STR	LEVEL	TYPE B	CADRE	RMKS
					1	2	3		
01	C, Pers Mgt Div	AG	2210	Cpt	1	1	1	0	1
02	Pers Mgt Off	AG	2210	Lt	1	1	1	0	1
03	Pers Mgt Supv	NC	71H5C	E-8	1	1	1	0	1
04	Asst Pers Mgt Supv	NC	71H40	E-7	2	2	2	0	1
05	Sr Pers Mgt Sp	NC	71H30	E-6	13	13	13	0	4
06	Pers Mgt Sp		71H30	E-5	34	34	34	0	10
07	Sr Clerk Typist		71B30	E-5	1	1	1	0	1
08	Clerk Typist		71B30	E-4	8	8	8	0	2
09	Pers Mgt Sp		71H30	E-4	33	33	33	0	10

Type H  
Personnel Actions Division

MTEL 12-67

MANNING TABLE

	OFF	WO	EM	AGG
SL - 1	1	1	61	63
TE - 2	1	1	61	63
RV - 3	1	1	61	63
E L				
CADRE	1	0	18	19
TYPE B	0	0	0	0

Line	Duty Position	Br	MOS	Grade	STR LEVEL			TYPE B	CADRE	RMKS
					1	2	3			
01	C, Pers Act Div	AG	2200	Cpt	1	1	1	0	1	
02	Unit Pers Tech		711A0	WO	1	1	1	0	0	
03	Pers Act Supv	NC	71H40	E-7	1	1	1	0	1	
04	Asst Pers Actions Supv	NC	71H40	E-6	3	3	3	0	1	
05	Sr. Pers Actions Sp		71H20	E-5	16	16	16	0	5	
06	Clerk Typist		71B30	E-4	5	5	5	0	2	
07	Pers Action Sp		71H20	E-4	36	36	36	0	9	

Type H  
Records Division

MTEL 12-67

MANNING TABLE

	OFF	WO	EM	AGG
SL - 1	1	5	128	134
TE - 2	1	5	128	134
RV - 3	1	5	128	134
E L				
CADRE	1	2	42	45
TYPE B	0	0	0	0

Line	Duty Position	Br	MOS	Grade	STR LEVEL			TYPE B	CADRE	RMKS
					1	2	3			
01	C, Rec Div	AG	2200	Maj	1	1	1	0	1	
02	Br Chief Rec Div		711A0	WO	5	5	5	0	2	
03	Rec Supv	NC	71H50	E-8	1	1	1	0	1	
04	Branch Supv	NC	71H40	E-7	3	3	3	0	1	
05	Asst Branch Supv	NC	71H40	E-6	1	1	1	0	1	
06	Rec Proc Supv	NC	71H40	E-6	6	6	6	0	3	
07	Sr Pers Rec Sp		71H20	E-5	27	27	27	0	10	
08	Pers Rec Sp		71H20	E-4	54	54	54	0	20	
09	Clerk Typist		71B30	E-4	20	20	20	0	6	
10	Proc Cont Clk		71H20	E-4	7	7	7	0	0	
11	Pers Rcds Asst		70A10	E-3	9	9	9			

7. Personnel Justification. Only those positions in Personnel Service Company Type H have been justified. The positions in Types A - G can be found in the justification for Type H by referring to the MOS and grade of the position desired.

a. Para 01. (1) Line 01 - Personnel Officer, 2200, AG, Major. Authorized by paragraph 6a(1)(b), AR 310-32.

(2) Line 02 - Executive Officer, 2200, AG, Lt. Authorized by paragraph 6c(1), AR 310-32.

(3) Line 03 - Personnel SMaj, 71H50, NC, E-9. Authorized by paragraph 8c(10)(a), AR 310-32.

(4) Line 04 - First Sergeant, 71L50, NC, E-8. Authorized by paragraph 8c(4)(a), AR 310-32.

(5) Line 05 - Administrative Supervisor, 71L40, NC, E-7. Queries computer files for reports and forms; maintains backup data on location of reporting information; advises company personnel regarding procedures and use of reports and forms. Acts as assistant to the Sergeant Major.

(6) Line 06 - Mess Steward, 94B40, NC, E-6. Authorized by paragraph 8c(18)(b), AR 310-32.

(7) Line 07 - Supply Sergeant, 76K40, NC, E-6. Authorized by paragraph 8c(23)(a), AR 310-32.

(8) Line 08 - Administrative Specialist, 71L20, E-5. Assists in filing and in the preparation of correspondence, reports, and memoranda.

(9) Line 09 - First Cook, 94B20, E-5. Paragraph 8c(18)(d), AR 310-32.

(10) Line 10 - Armorer, 76K30, E-4. Authorized by paragraph 8c (20) (a), AR 310-32.

(11) Line 11 - Clerk Typist, 71B30, E-4. Authorized by paragraph 8c(8), AR 310-32.

(12) Line 12 - Company Clerk, 71H20, E-4. Authorized by paragraph 8c(7), AR 310-32.

(13) Line 13 - Unit Supply Specialist, 76K20, E-4. Authorized by paragraph 8c(23) (b), AR 310-32.

(14) Line 14 - Cook, 94B20, E-4. Authorized by paragraph 8c(18) (d), AR 310-32.

(15) Line 15 - Wheel Vehicle Mechanic, 63B20, E-4. Authorized by paragraph 8c(20) (d), AR 310-32.

(16) Line 16 - Administrative Message Clerk, 70A10, E-3. Operates the unit distribution element for the receipt, dispatch, and delivery of messages and other documents within, to, and from remote areas for the personnel services company.

(17) Line 17 - Cook Helper, 94A10, E-3. Authorized by paragraph 8c(18) (f), AR 310-32.

(18) Line 18 - Reproduction Machine Operator, 70A10, E-3. Operates the reproduction equipment for reproducing publications, directives, forms, and other required documents.

(19) Line 19 - Wheel Vehicle Mechanic Helper, 63A10, E-3. Authorized by paragraph 8c(20) (d), AR 310-32.

b. Para 02. (1) Line 01 - Chief, Personnel Management Division, 2210, AG, Capt. Supervises the activities of his division; establishes procedures within his division to insure accuracy and efficiency in accomplishing personnel management functions. Administers all classification and reclassification action, including personnel testing; assignment and reassignment of all personnel; and a multitude of other special functions concerning personnel management.

(2) Line 02 - Personnel Management Officer, 2210, AG, Lt. Principal assistant to the Chief, PM Division and assumes responsibility for the division in his absence. Performs such duties as may be required or directed.

(3) Line 03 - Personnel Management Supervisor, 71H50, NC, E-8. Principal enlisted assistant to the chief, PM Division. Supervises workload distribution and establishes work requirements of assigned enlisted personnel.

(4) Line 04 - Personnel Management Supervisors, 71H40, NC, E-7. Provide necessary shift supervision for a 24-hour work schedule. Assist in duties related to line 03 above.

(5) Line 05 - Senior Personnel Management Supervisor, 71H30, E-6. Provide skills required in personnel classification system at this level.

(6) Line 06 - Personnel Management Specialist, 71H20, E-5. Provides special skills required in personnel management at this level. Allocated on the basis of 1 Sr PM Specialist to 2 PM Specialist in accordance to the level of support required.

(7) Line 07 and 08 - Clerk Typist, 71B30, E-5 and E-4.  
Authorized by paragraph 8c(8), AR 310-32.

(8) Line 09 - Personnel Management Specialist, 71H30, E-4. Allocated on the basis of one Personnel Management Specialist to each 600 individuals supported.

c. Para 03. (1) Line 01 - Chief, Personnel Action Division, 2200, AG, Capt. Supervises the activities of his division; and establishes procedures within his division to insure accuracy and efficiency in accomplishing all personnel action functions not specifically assigned to other elements of the Personnel Service Company. Administers all matters pertaining to eliminations, separations, resignations, retirements, reenlistments, extensions, deaths, transfers and details, identification cards, and security clearances. Receives all applications of an individual nature and insures proper staffing and screening.

(2) Line 02 - Personnel Actions Technician, 711A0, WO.  
Authorized by paragraph 7d(2), AR 310-32.

(3) Line 03 - Personnel Actions Supervisor, 71H40, NC, E-7. Principal enlisted NCO in the PA Division and principal enlisted assistant to the Chief. Supervises the workload distribution and establishes work requirements of assigned enlisted personnel.

(4) Line 04 - Assistant Personnel Actions Supervisor, 71H40, NC, E-6. Provides necessary shift supervision for a 24-hour work schedule.

(5) Line 05 - Senior Personnel Actions Specialist, 71H20, E-5. Provides special skills required by personnel action

matters at this level. Allocated on the basis of 1 Assistant PA Specialist to 2 or 3 Personnel Action Specialist in accordance with the level of support required.

(6) Line 06 - Clerk Typist, 71B30, E-4. Authorized by paragraph 8c(8), AR 310-32.

(7) Line 07 - Personnel Actions Specialist, 71H20, E-4. Allocated on the basis of one Personnel Actions Specialist to each 900 individuals supported.

d. Para 04. Records Division

(1) Line 01 - Chief, Records Division, 2200, AG, Major. Supervises the activities of his division and establishes procedures within his division to insure accuracy and efficiency in accomplishing all personnel records functions. Administers all matters pertaining to personnel records maintenance and providing personnel data to supported units.

(2) Line 02 - Branch Chief, Records Division, 711A0, WO. Advises the Chief, Records Division on matters relating to establishment and maintenance of personnel records data. Formulates and develops internal operating policies and procedures in consonance with mission of the division.

(3) Line 03 - Records Supervisor, 71H50, NC, E-8. Principal enlisted assistant to the Chief, Records Division. Supervises all enlisted personnel of the division. Prepares all consolidated administrative reports pertaining to the operation of the division.

(4) Line 04 - Branch Supervisor, 71H40, NC, E-7.

Provides necessary shift supervision for a 24-hour work schedule. Directly supervises and coordinates activities of the Record Processing Supervisors.

(5) Line 05 - Assistant Branch Supervisor, 71H40, NC, E-6. Principal assistant to Branch Supervisor and supervises the alternate shift of a 24-hour work schedule.

(6) Line 06 - Records Processing Supervisor, 71H40, NC, E-6. Serves as unit supervisor under the Branch Supervisor. Allocated on the basis of a norm ratio of 1 Record Processing Supervisor to 3 Senior Personnel Records Specialists with a spread of 1:2 to 1:3 according to the organization of separate elements of the branch.

(7) Line 07 - Senior Personnel Records Specialists, 71H20, E-5. Provides special skills required in personnel records keeping at this level. Allocated on the basis of 1 Senior Personnel Records Specialist to 2 Personnel Records Specialists.

(8) Line 08 - Personnel Records Specialist, 71H20, E-4. Allocated on the basis of 1 Personnel Records Specialist to each 800 individuals supported.

(9) Line 09 - Clerk Typist, 71B30, E-4. Allocated on the basis of the number of Personnel Records Specialists at a norm ratio of 1 Clerk Typist to 5 Personnel Records Specialist.

(10) Line 10 - Process Control Clerk, 71H20, E-4. Receives and distributes correspondence, establishes and maintains

internal control of in-process actions, and transaction log data transmitted to the service support command ADP activity. Allocated on the basis of a norm ratio of 1 Process Control Clerk to 10 Personnel Records Specialist with a spread of 1:8 to 1:12 for activities allocated personnel records specialists in excess of 10.

(11) Line 11 - Personnel Records Assistant, 70A10, E-3. Allocated on a basis of 1 per six Senior and Personnel Records Specialists.

MTEL 12-67

PERSONNEL SERVICE COMPANY HQ  
(UNIT TITLE)

MAJOR ITEMS EQUIPMENT LIST

EAM LINE ITEM NO.	ITEM NOMENCLATURE (ABBRV)	AUTHORIZATION																
		TYPE																
		A	B	C	D	E	F	G	H	09	10	11	12	13	14	15	16	TOTAL
A032108	Accessory outfit gasoline fld range 33 components	1	1	1	1	1	1	1	1									
C377372	Burner Assy space Heater	6	6	6	7	8	8	10	16									
D650028	Case fld off mach plywd 22-1/2" L, 13-1/4"W, 17"D, ID	1	1	2	3	3	4	5	7									
F979158	Desk fld plywd 22-5/8"W, 25-7/8" H, 14-1/2"D	2	2	2	2	2	3	3	3									
H423428	Filing cab ltr stl olive 1 dwr 1t	2	2	2	2	3	3	4	12									
J458362	Gen Set Gas Eng 3KW 60 cy 1 & 3 PH4 wire AC 120/240 120/208 V skid mid	1	1	1	1	1	1	1	2									
J487132	Gen Set Gas Eng 5KW 60 cy 1 & 3 PH4 wire	1	1	2	2	2	2	2	3									
K253422	Heater Immer sion liq fuel fired 30" leg of heater	6	8	10	10	14	14	16	20									
K254792	Heater Immersion liq fuel fired 37-1/4" leg of heater	1	1	1	1	1	1	1	1									

MTEL 12-67

PERSONNEL SERVICE COMPANY HQ  
(UNIT TITLE)

MAJOR ITEMS EQUIPMENT LIST

EAM LINE ITEM NO.	ITEM NOMENCLATURE (ABBRV)	AUTHORIZATION																								
		TYPE																								
		A	B	C	D	E	F	G	H	01	02	03	04	05	06	07	08	09	10	11	12	13	14	15	16	TOTAL
K258902	Heater space coal or oil 45000 BTU 18-5/8"	6	6	6	7	8	8	10	16																	
L639942	Light set gen illum 25 outlet	5	5	6	7	8	8	8	12																	
L923863	Machine gun lg flex	3	3	4	6	6	7	7	8																	
M757143	Mount tripod mach gun 7.62 mm	3	3	4	6	6	7	7	8																	
N967413	Pistol auto cal .45	1	1	1	1	1	1	1	1																	
P608432	Printing and heat developing machine table 8-1/2 w/ paper	1	1	2	2	2	2	2	3																	
R141548	Range outfit gaso- line	2	2	2	4	4	4	5	5																	
R757098	Repair kit tentage	1	1	1	1	1	1	1	1																	
R951143	Rifle 7.62 mm	11	12	17	17	18	22	25	34																	
S274058	Safe 2 shelves 1 dr w comptmt 26"H, 17"W, 17-1/2"D	1	1	1	1	1	1	2	2																	
S586748	Screen Latrine FMWR DD 55 ft lg 8 pins, 10 poles	1	1	1	1	1	1	1	2																	

CDGAGA Form 27  
6 Dec 1965

MTEL 12-67

PERSONNEL SERVICE COMPANY HQ  
(UNIT TITLE)

MAJOR ITEMS EQUIPMENT LIST

EAM LINE ITEM NO.	ITEM NOMENCLATURE (ABBRV)	AUTHORIZATION																								
		TYPE																								
		A	B	C	D	E	F	G	H	01	02	03	04	05	06	07	08	09	10	11	12	13	14	15	16	TOTAL
U817071	Switchboard	1	1	1	1	1	1	1	1																	
U934778	Table folding legs wood top and legs 36"L, 24"W, 27- 25/32"H	10	12	17	15	18	22	25	34																	
V312111	TA 312/pt (tele set)	1	1	1	1	1	2	2	4																	
W316348	Tool kit armorers 42 components	1	1	1	1	1	1	1	1																	
V489898	Tent Gen purpose med w/o FMWR comp w/pins and poles	2	2	2	2	2	2	2	2																	
V491268	Tent Gen purpose small ctn duck FMWR OD w/pins and poles	2	2	2	2	2	2	2	3																	
V498118	Tent kitchen fly proof FMWR olive drab comp w/pins and poles	1	1	1	1	1	1	1	1																	
V517298	Tent liner ctn OX FMWR net	2	2	2	2	2	2	2	3																	
V520038	Tent liner ctn permeable tent gen purpose med	2	2	2	2	2	2	2	2																	
W325933	Tool kit org maint nr 1 common	1	1	1	1	1	1	1	1																	

CDCAGA Form 27  
6 Dec 1965

A-III-54

MTEL 12-67

PERSONNEL SERVICE COMPANY HQ  
(UNIT TITLE)

MAJOR ITEMS EQUIPMENT LIST

EAM LINE ITEM NO.	ITEM NOMENCLATURE (ABBRV)	TYPE								AUTHORIZATION									
		A	B	C	D	E	F	G	H	01	02	03	04	05	06	07	08		
		01	02	03	04	05	06	07	08	09	10	11	12	13	14	15	16	TOTAL	
W328763	Tool kit org main nr 1 supplemental	1	1	1	1	1	1	1	1										
W954002	Trailer amphib cargo 1/4 ton 2 wh	2	2	2	2	2	2	2	3										
W955372	Trailer cargo 3/4 ton, 2 wh	3	3	3	3	3	3	3	4										
W988252	Trailer tank wtr 1-1/2 ton, 2 wh	1	1	1	1	1	1	1	2										
X014508	Vestibule tent F/tent, gen pur- pose small olive drab	2	2	2	2	2	2	2	3										
X397352	Truck cargo 3/4 ton, 4 X 4	3	3	3	3	3	3	3	4										
X400092	Truck cargo 2-1/2 ton, 6 X 6 LWB	1	1	1	1	1	1	1	2										
X608332	Truck utility 1/4 ton, 4 X 4	2	2	2	2	2	2	2	3										
X652588	Trunk locker ply- wd, 31"L, 15-1/8" W, 11-7/8"D, w/ tray	2	2	2	3	4	5	5	7										
Z247812	Duplicating mach bench type, 9-1/2 X 13	1	1	1	1	1	1	2	2										
X800748	Typewriter, non- portable, 13"	1	1	2	3	3	4	5	7										

MTEL 12-67

PERSONNEL SERVICE COMPANY HQ  
(UNIT TITLE)

MAJOR ITEMS EQUIPMENT LIST

EAM LINE ITEM NO.	ITEM NOMENCLATURE (ABBRV)	AUTHORIZATION															
		TYPE															
		A	B	C	D	E	F	G	H								
01	02	03	04	05	06	07	08	09	10	11	12	13	14	15	16	TOTAL	
Z94247T	Typewriter, 12" carriage: ADPE	1	1	1	1	1	2	3	6								

PERSONNEL MANAGEMENT DIVISION  
(UNIT TITLE)

MTEL 12-67

MAJOR ITEMS EQUIPMENT LIST

EAM LINE ITEM NO.	ITEM NOMENCLATURE (ABBRV)	AUTHORIZATION															
		TYPE															
		A	B	C	D	E	F	G	H	01	02	03	04	05	06	07	08
C377372	Burner Assy space heater	2	4	4	6	6	8	8	14								
D650028	Case fld plywd mach 22-1/2" L, 13-1/4" W, 17" D	2	6	8	12	14	18	20	60								
F979158	Desk fld plywd 22-5/8"W, 27-7/8"L, 14-1/2"D	1	1	1	1	1	1	2	2								
H423428	Filing cab ltr stl olive 1 dr H	2	4	5	6	8	10	14	18								
K258902	Heater space coal or oil 45000 BTU	2	4	4	6	6	8	8	14								
P608432	Printing & Heat Develop mach table	1	1	1	1	1	1	1	4								
R951143	Rifle 7.62 mm	9	18	24	32	40	48	57	94								
U934778	Table folding legs & top wood 32"L, 24"W, 27 25/32"H	8	17	23	31	39	47	55	92								
V312111	TA 312/pt	1	1	1	1	1	1	2	4								
V489898	Tent Gen purpose med w/o FMWR comp w/pins and poles	1	2	2	3	3	4	4	7								
V520038	Tent liner ctn permeable tent gen purpose med	1	2	2	3	3	4	4	7								

PERSONNEL MANAGEMENT DIVISION  
(UNIT TITLE)

MAJOR ITEMS EQUIPMENT LIST

EAM LINE ITEM NO.	ITEM NOMENCLATURE (ABBREV)	AUTHORIZATION															
		TYPE															
		A	B	C	D	E	F	G	H	01	02	03	04	05	06	07	08
X652588	Trunk locker plywo 31"L, 15-1/8"W, 11-7/8"D, w/tray	5	8	16	29	25	30	40	70								
X800748	Typewriter nonptbl 13" paper size 42-44 keys, elite type	2	6	8	12	14	18	20	60								
Z94247T	Typewriter, 12" Carriage: ADPE	1	2	2	3	4	4	5	15								

**PERSONNEL ACTION DIVISION**  
(UNIT TITLE)

**MAJOR ITEMS EQUIPMENT LIST**

EAM LINE ITEM NO.	ITEM NOMENCLATURE (ABBV)	AUTHORIZATION															
		TYPE															
		A	B	C	D	E	F	G	H	01	02	03	04	05	06	07	08
C377372	Burner Assy space heater	2	2	2	4	4	6	6	8								
D650028	Case fld mach, plywd, 22-1/2"L, 13-1/4"W, 17"D	2	2	6	8	10	12	14	40								
F979158	Desk fld plywood 22-5/8"W, 27-7/8" L, 14-1/2"D	1	1	1	1	1	1	1	2								
G852022	Duplicating mach stencil proc bench hand auto 7-1/4"W, 14"L	1	1	1	1	1	1	1	2								
H429428	Filing cab, ltr, stl, olive 1 dr H	2	3	4	5	7	7	9	12								
K258902	Heater space coal or oil 45000 BTU	2	2	2	4	4	6	6	8								
P608432	Printing and Heat develop Mach Table	1	1	1	1	1	1	1	1								
R95114	Rifle 7.62 mm	7	12	17	22	27	32	37	63								
U934778	Table folding legs and top wood 32"L, 24"W, 27-25/32"H	6	12	17	22	27	32	37	62								
V312111	TA 312/pt	1	1	1	1	1	2	2	4								
V489898	Tent Gen purpose med w/o FMWR comp, w/pins and poles	1	1	1	2	2	3	3	3								

MTEL 12-67

PERSONNEL ACTION DIVISION  
(UNIT TITLE)

MAJOR ITEMS EQUIPMENT LIST

EAM LINE ITEM NO.	ITEM NOMENCLATURE (ABBREV)	TYPE								AUTHORIZATION																
		A	B	C	D	E	F	G	H	01	02	03	04	05	06	07	08	09	10	11	12	13	14	15	16	TOTAL
		01	02	03	04	05	06	07	08	09	10	11	12	13	14	15	16	TOTAL								
V520038	Tent liner ctn permeable tent gen purpose med	1	1	1	2	2	3	3	3																	
X652588	Trunk locker ply-wd, 31"L, 15-1/8" W, .11-7/8"D, w/ tray	6	8	12	16	20	26	30	50																	
X800748	Typewriter nonptbl 13" paper size 42-44 keys, elite type	2	2	6	8	10	12	14	40																	
Z94247T	Typewriter, 12" carriage: ADPE	1	1	2	2	2	4	3	5																	

RECORDS DIVISION  
(UNIT TITLE)

MAJOR ITEMS EQUIPMENT LIST

EAM LINE ITEM NO.	ITEM NOMENCLATURE (ABBRV)	AUTHORIZATION																
		TYPE																
		A	B	C	D	E	F	G	H									
		01	02	03	04	05	06	07	08	09	10	11	12	13	14	15	16	TOTAL
C377372	Burner Assy space heater	2	4	6	8	8	10	16	20									
D650028	Case fld plywood mach, 22-1/2"L, 13-1/4"W, 17"D	1	2	3	3	3	5	6	9									
F979158	Desk fld plywood 22-1/2"W, 27-7/8" L, 24"W, 27-25/32" H	1	1	1	2	2	2	2	2									
G852022	Duplicating mach stencil bench prod hand auto 7-1/4"W, 14"L	1	1	1	1	1	1	1	2									
H423428	Filing cab ltr st olive 1 dr H	5	6	7	8	10	12	12	18									
K258902	Heater space coal or oil 45000BTU	2	4	6	8	8	10	16	20									
N967413	Pistol auto Cal .45								1									
P608432	Printing & Heat Develop Mach table	1	1	1	1	1	2	2	2									
R95114	Rifle, 7.62 mm	11	24	36	48	58	69	92	133									
U934778	Table folding lgs and top wood 32"L, 24"W, 27-25/32"H	11	24	36	47	57	68	92	134									
V312111	TA 312/pt	1	4	3	6	7	3	8	15									

RECORDS DIVISION  
(UNIT TITLE)

MAJOR ITEMS EQUIPMENT LIST

EAM LINE ITEM NO.	ITEM NOMENCLATURE (ABBRV)	AUTHORIZATION																
		TYPE																
		A	B	C	D	E	F	G	H									
		01	02	03	04	05	06	07	08	09	10	11	12	13	14	15	16	TOTAL
V489898	Tent Gen purpose med w/o FMWR com w/pins and poles	1	2	3	4	4	5	8	10									
V520038	Tent liner ctn gen purpose med	1	2	3	4	4	5	8	10									
X652588	Trunk locker plywood, 31"L, 15-1/8"W	1	2	3	4	5	5	8	11									
X800748	Typewriter non-ptbl, 13" paper size 42-44 keys, elite type	1	2	3	3	3	5	6	9									
Z94247T	Typewriter, 12" carriage: ADPE	1	3	4	5	6	8	9	8									

## PERSONNEL SERVICE COMPANY

MTEL 12-67

## MAJOR ITEMS EQUIPMENT LIST

(RECAPITULATION TOE)

## TYPE A

EAM LINE ITEM NO	ITEM NOMENCLATURE (Abbrv)	HQ	PA	PM	REC	TOTAL	REMARKS
J48713-2	Gen Set Gas Eng 5 KW 60 CY 1 & 3 PH 4 wire	1	0	0	0	1	
J45836-2	Gen Set Gas Eng 3 KW 60 CY 1 & 3 PH 4 wire AC 120/240 120/208 V skd mtd	1	0	0	0	1	
K25342-2	Heater Immersion liq fuel fired 30" legs of heater	6	0	0	0	6	
N25479-2	Heater Immersion liq fuel fired 37-1/4" leg of heater	1	0	0	0	1	
K25890-2	Heater space coal or oil 45000 BTU 18-5/8"H	6	2	2	2	12	
L63994-2	Light set gen I'llum 25 outlet	5	0	0	0	5	
C37737-2	Burner Assy space htr	6	2	2	2	12	
L92386-3	Machine Gun light flex	3	0	0	0	3	
M75714-3	Mount tripod machine gun 7.62 millimeter	3	0	0	0	3	
R95114-3	Rifle 7.62 millimeter	11	7	9	11	38	
N96741-3	Pistol Cal .45	1	0	0	0	1	
W32593-3	Tool kit org maint nr 1 commn	1	0	0	0	1	
W32876-3	Tool kit org maint nr 1 supplemental	1	0	0	0	1	

		HQ	PA	PM	REC	TOTAL	REMARKS
W95400-2	Trailer amphibious cargo 1/4 ton 2 wheel	2	0	0	0	2	
W95537-2	Trailer cargo 3/4 Ton 2 wheel	3	0	0	0	3	
W98825-2	Trailer tank water 1-1/4 Ton 2 wheel	1	0	0	0	1	
X39735-2	Truck cargo 3/4 Ton 4 X 4	3	0	0	0	3	
X40009-2	Truck cargo 2-1/2 Ton 6 X 6 LWB	1	0	0	0	1	
X60833-2	Truck utility 1/4 Ton 4 X 4	2	0	0	0	2	
A03210-8	Accessory outfit gaso- line fld range 33 comp	1	0	0	0	1	
D65002-8	Case fld off mach ply- wood 22-1/2"L, 13-1/4"W, 17"D	1	2	2	1	6	
F97915-8	Desk fld plywood 22-5/8" W, 25-7/8"H, 14-1/2"D	2	1	1	1	7	
P60843-2	Printing and heat developing machine table 8-1/2" w/paper	1	1	1	1	4	
R14154-8	Range outfit gasoline	2	0	0	0	2	
R75709-8	Repair kit tentage	1	0	0	0	1	
S27405-8	Safe 2 shelves 1 drw 2 compartment 26"H, 17"W, 17-1/2"D	1	0	0	0	1	
S58674-8	Screen latrine FMWR OD 55 ft lg 8 pins 10 poles	1	0	0	0	1	
U934778	Table folding legs wood top and legs 36"L, 24"W, 27-25/32"H	10	6	8	11	35	
V48989-8	Tent Gen purpose med w/o FMWR compl w/pins & poles	2	1	1	1	5	

		HQ	PA	PM	REC	TOTAL	REMARKS
V49126-8	Tent Gen purpose sml ctn duck FMWR OD w/ P&P	2	0	0	0	2	
V49811-8	Tent kitchen fly proof FMWR olive drab compl w/pins & poles	1	0	0	0	1	
V51729-8	Tent liner ctn OX FMWR nt	2	0	0	0	2	
V52003-8	Tent liner ctn permeable tent gen purpose medium	2	1	1	1	5	
W31634-8	Tool kit armorers 42 components	1	0	0	0	1	
Z94247T	Typewriter, 12" carriage: ADPE	1	1	1	1	4	
X80074-8	Typewriter nonptbl 13" paper size 42 to 44 keys elite type	1	2	2	1	6	
V31211-1	TA 312/pt (Telephone)	1	1	1	1	4	
X65258-8	Truck locker plywood 31"L, 15-1/8"W, 11-7/8"D w/tray	2	6	5	1	14	
H42342-8	Filing cab ltr stl Olive 1 Dr H1	2	2	2	5	11	
Z247812	Duplicating Mach, bench type, 9-1/2 X 13"	1	0	0	0	1	
U817071	Switchboard	1	0	0	0	1	
G852022	Duplicating Machine stencil proc bench hand auto 7-1/4"W 14"L	0	1	0	1	2	
X014508	Vestibule tent f/tent, gen porp sm olive drab	2	0	0	0	2	

PERSONNEL SERVICE COMPANY

MTEL 12-67

MAJOR ITEMS EQUIPMENT LIST  
(RECAPITULATION TOE)

TYPE B

TEAM LINE ITEM NO	ITEM NOMENCLATURE (Abbrv)	HQ	PA	PM	REC	TOTAL	REMARKS
J48713-2	Gen Set Gas Eng 5 KW 60 CY 1 & 3 PH 4 wire	1	0	0	0	1	
J45836-6	Gen Set Gas Eng 3 KW 60 CY 1 & 3 PH 4 wire AC 120/240 120/208 V skd mid	1	0	0	0	1	
K25342-2	Heater Immersion liq fuel fired 30" legs of heater	8	0	0	0	8	
K25479-2	Heater Immersion liq fuel fired 37-1/4" leg of heater	1	0	0	0	1	
K25890-2	Heater space coal or oil 45000 BTU 18-5/8"H	6	2	4	4	16	
L63994-2	Light set gen illum 25 outlet	5	0	0	0	5	
C37737-2	Burner Assy space htr	6	2	4	4	16	
L92386-3	Machine Gun light flex	3	0	0	0	3	
M75714-3	Mount tripod machine gun 7.62 millimeter	3	0	0	0	3	
R95114-3	Rifle 7.62 millimeter	12	12	18	24	66	
N96741-3	Pistol Cal .45	1	0	0	0	1	
W32593-3	Tool kit org maint nr 1 common	1	0	0	0	1	
W32876-3	Tool kit org maint nr 1 supplemental	1	0	0	0	1	

		HQ	PA	PM	REC	TOTAL	REMARKS
W95400-2	Trailer amphibious cargo 1/4 Ton 2 wheel	2	0	0	0	2	
W95537-2	Trailer cargo 3/4 Ton 2 wheel	3	0	0	0	3	
W98825-2	Trailer tank water 1-1/4 Ton 2 wheel	1	0	0	0	1	
X39735-2	Truck cargo 3/4 Ton 4 X 4	3	0	0	0	3	
X40009-2	Truck cargo 2-1/2 Ton 6 X 6 LWB	1	0	0	0	1	
X60833-2	Truck utility 1/4 Ton 4 X 4	2	0	0	0	2	
A03210-8	Accessory outfit gas- oline fld range 33 comp	1	0	0	0	1	
D65002-8	Case fld off mach ply- wood 22-1/2"L, 13-1/4"W, 17"D	1	2	6	2	11	
G852022	Duplicating mach stencil process bench hand auto 7-1/4" W, 14L	0	1	0	11	2	
F97915-8	Desk fld plywood 22-5/8" W, 25-7/8"H, 14-1/2"D	2	1	1	1	5	
P60843-2	Printing and heat de- veloping machine table 8-1/2" w/paper	1	1	1	1	4	
R14154-8	Range outfit gasoline	2	0	0	0	2	
R75709-8	Repair kit tentage	1	0	0	0	1	
S27405-8	Safe 2 shelves 1 drw 2 compartment 26"H 17"W, 17-1/2"D	1	0	0	0	1	
S58674-8	Screen latrine FMWR OD 55 ft lg 8 pins 10 poles	1	0	0	0	1	
U934778	Table folding legs wood top and legs 36"L, 24"W, 27-25/32"H	12	12	17	24	65	

		HQ	PA	PM	REC	TOTAL	REMARKS
V48989-8	Tent Gen purpose med w/o FMWWR compl w/pins and poles	2	1	2	2	7	
V49126-8	Tent Gen purpose sml ctn duck FMWWR OD w/p&p	2	0	0	0	2	
749811-8	Tent kitchen fly proof FMWWR olive drab compl w/pins and poles	1	0	0	0	1	
V51729-8	Tent liner ctn OX FMWWR nt	2	0	0	0	2	
V52003-8	Tent liner ctn permeable tent gen purpose medium	2	1	2	2	7	
W31634-8	Tool kit armorers 42 components	1	0	0	0	1	
Z94247T	Typewriter, 12" carriage: ADPE	1	1	2	3	7	
X80074-8	Typewriter nonptbl 13" paper size 42 to 44 keys elite type	1	2	6	2	11	
V31211-1	TA 312/pt (Telephone)	1	1	1	4	7	
X652588	Trunk locker plywood 31"L, 15-1/8"W, 11-7/8"D, w/tray	2	8	8	2	20	
H423428	Filing cab ltr stl Olive 1 Dr HI	2	3	4	6	15	
Z247812	Duplicating machine, bench type, 9-1/2" X 13"	1	0	0	0	1	
U817071	Switchboard	1	0	0	0	1	
X014508	Vestibule tent f/tent gp sm olive drab	2	0	0	0	2	

PERSONNEL SERVICE COMPANY

MTEL 12-67

MAJOR ITEMS EQUIPMENT LIST  
(RECAPITULATION TOE)

TYPE C

EAM LINE ITEM NO	ITEM NOMENCLATURE (Abbrv)	HQ	PA	PM	REC	TOTAL	REMARKS
J48713-2	Gen Set Gas Eng 5 KW 60 CY 1 & 3 PH 4 wire	2	0	0	0	2	
J45836-2	Gen Set Gas Eng 3 KW 60 CY 1 & 3 PH 4 wire AC 120/240 120/208 V skd mtd	1	0	0	0	1	
K25342-2	Heater Immersion liq fuel fired 30" legs of heater	10	0	0	0	10	
K25479-2	Heater Immersion liq fuel fired 37-1/4" leg of heater	1	0	0	0	1	
K25890-2	Heater space coal or oil 45000 BTU 18-5/8"H	6	2	4	6	18	
L63994-2	Light set gen I'llum 25 outlet	6	0	0	0	6	
C37737-2	Burner Assy space htr	6	2	4	6	18	
L92386-3	Machine Gun light flex	4	0	0	0	4	
M75714-3	Mount tripod machine gun 7.62 millimeter	4	0	0	0	4	
R95114-3	Rifle 7.62 millimeter	17	17	24	36	94	
N96741-3	Pistol Cal .45	1	0	0	0	1	
W32593-3	Tool kit org maint nr 1 common	1	0	0	0	1	
W32876-3	Tool kit org maint nr 1 supplemental	1	0	0	0	1	

		HQ	PA	PM	REC	TOTAL	REMARKS
W95400-2	Trailer amphibious cargo 1/4 Ton 2 wheel	2	0	0	0	2	
W95537-2	Trailer cargo 3/4 Ton 2 wheel	3	0	0	0	3	
W98825-2	Trailer tank water 1-1/4 Ton 2 wheel	1	0	0	0	1	
X39735-2	Truck cargo 3/4 Ton 4 X 4	3	0	0	0	3	
X40009-2	Truck cargo 2-1/2 Ton 6 X 6 LWB	1	0	0	0	1	
X60833-2	Truck utility 1/4 Ton 4 X 4	2	0	0	0	2	
A03210-8	Accessory outfit gas- oline fld range 33 comp	1	0	0	0	1	
D65002-8	Case fld off mach ply- wood 22-1/2"L, 13-1/4"W, 17"D	2	6	8	3	19	
G852022	Duplicating mach stenoil process bench hand auto 7-1/4W, 14L	1	1	0	1	2	
F97915-8	Desk fld plywood 22-5/8" W, 25-7/8"H, 14-1/2"D	2	1	1	1	5	
P60843-2	Printing and heat de- veloping machine table 8-1/2" w/paper	2	1	1	1	5	
R14154-8	Range outfit gasoline	2	0	0	0	2	
R75709-8	Repair kit tentage	1	0	0	0	1	
S27405-8	Safe 2 shelves 1 drw 2 compartment 26"H, 17"W, 17-1/2"D	1	0	0	0	1	
S58674-8	Screen latrine FMWR OD 55 ft lg 8 pins 10 poles	1	0	0	0	1	
U934778	Table folding legs wood top and legs 36"L, 24"W, 27-25/32"H	17	22	23	36	98	

Type C		HQ	PA	PM	REC	TOTAL	
V48989-8	Tent Gen purpose med w/o FMWWR compl w/pins and poles	2	1	2	3	8	
V49126-8	Tent Gen purpose sml ctn duck FMWWR OD w/p&p	2	0	0	0	2	
V49811-8	Tent kitchen fly proof FMWWR olive drab compl w/pins & poles	1	0	0	0	1	
V41729-8	Tent liner ctn OX FMWWR nt	2	0	0	0	2	
V52003-8	Tent liner ctn permeable tent gen purpose medium	2	1	2	3	8	
W31634-8	Tool kit armorers 42 components	1	0	0	0	1	
Z94247T	Typewriter, 12" carriage: ADPE	1	2	2	4	9	
X8007408	Typewriter nonptbl 13" paper size 42 to 44 keys elite type	2	6	8	3	19	
V31211-1	TA 312/pt (Telephone)	1	1	1	3	6	
X65258-8	Trunk locker plywood 31"L, 15-1/8"W, 11-7/8"D, w/tray	2	12	16	3	33	
H42342-8	Filing cab ltr stl Olive 1 Dr Hl	2	4	5	7	18	
Z24781-2	Duplicating Mach, bench type, 9-1/2" X 13"	2	0	0	0	2	
U817071	Switchboard	1	0	0	0	1	
X014508	Vestibule tent f/tent Gp sm olive drab	2	0	0	0	2	

PERSONNEL SERVICE COMPANY

MTEL 12-67

MAJOR ITEMS EQUIPMENT LIST  
(RECAPITULATION TOE)

TYPE D

EAM LINE ITEM NO	ITEM NOMENCLATURE (Abbrv)	HQ	PA	PM	REC	TOTAL	REMARKS
J48713-2	Gen Set Gas Eng 5 KW 60 CY 1 & 3 PH 4 wire	2	0	0	0	2	
J45836-6	Gen Set Gas Eng 3 KW 60 CY 1 & 3 PH 4 wire AC 120/240 120/208 V skd mid	1	0	0	0	1	
K25342-2	Heater Immersion liq fuel fired 30" legs of heater	10	0	0	0	10	
K25479-2	Heater Immersion liq fuel fired 37-1/4" leg of heater	1	0	0	0	1	
K25890-2	Heater space coal or oil 45000 BTU 18-5/8"H	7	4	6	8	25	
L63994-2	Light set gen I'llum 25 outlet	7	0	0	0	7	
C37737-2	Burner Assy space htr	7	4	6	8	25	
L92386-3	Machine Gun light flex	6	0	0	0	6	
M75714-3	Mount tripod machine gun 7.62 millimeter	6	0	0	0	6	
R95114-3	Rifle 7.62 millimeter	17	22	32	48	119	
N96741-3	Pistol Cal .45	1	0	0	0	1	
W32593-3	Tool kit org maint nr 1 common	1	0	0	0	1	

		HQ	PA	PM	REC	TOTAL	REMARKS
W32876-3	Tool kit org maint nr 1 supplemental	1	0	0	0	1	
W95400-2	Trailer amphibious cargo 1/4 Ton 2 wheel	2	0	0	0	2	
W95537-2	Trailer cargo 3/4 Ton 2 wheel	3	0	0	0	3	
W98825-2	Trailer tank water 1-1/4 Ton 2 wheel	1	0	0	0	1	
X39735-2	Truck cargo 3/4 Ton 4 X 4	3	0	0	0	3	
X40009-2	Truck cargo 2-1/2 Ton 6 X 6 LWB	1	0	0	0	1	
X60833-2	Truck utility 1/4 Ton 4 X 4	2	0	0	0	2	
A03210-8	Accessory outfit gas- oline fld range 33 comp	1	0	0	0	1	
D65002-8	Case fld off mach ply- wood 22-1/2"L, 13-1/4"W, 17"D	3	8	12	3	26	
G852022	Duplicating mach stencil process, hand auto 7-1/4W, 14L	0	1	0	1	2	
F97915-8	Desk fld plywood 22-5/8" W, 25-7/8"H, 14-1/2"D	2	1	1	2	6	
P60843-2	Printing and heat de- veloping machine table 8-1/2" w/paper	2	1	1	1	5	
R14154-8	Range outfit gasoline	4	0	0	0	4	
R75709-8	Repair kit tentage	1	0	0	0	1	
S27405-8	Safe 2 shelves 1 drw 2 compartment 26"H, 17"W, 17-1/2"D	1	0	0	0	1	
S58674-8	Screen latrine FMWR OD 55 ft lg 8 pins 10 poles	2	0	0	0	2	

		HQ	PA	FM	REC	TOTAL	REMARKS
U934778	Table folding legs wood top and legs 36"L, 24"W, 27- 25/32"H	15	22	31	47	115	
V48989-8	Tent Gen purpose med w/o FMWWR compl w/pins and poles	2	2	3	4	11	
V49126-8	Tent Gen purpose sml ctn duck FMWWR OD w/p&p	2	0	0	0	2	
V49811-8	Tent kitchen fly proof FMWWR olive drab compl w/pins and poles	1	0	0	0	1	
V51729-8	Tent liner ctn OX FMWWR nt	2	0	0	0	2	
V52003-8	Tent liner ctn permeable tent gen purpose medium	2	2	3	4	11	
W31634-8	Tool kit armorers 42 components	1	0	0	0	1	
Z94247T	Typewriter, 12" carriage: ADPE	1	2	3	5	11	
X80074-8	Typewriter nonptbl 13" paper size 42 to 44 keys elite type	3	8	12	3	26	
V31211-1	TA 312/pt (Telephone)	1	1	1	6	9	
X652588	Trunk locker plywood 31"L, 15-1/8"W, 11- 7/8"D, w/tray	3	16	29	4	53	
H42342-8	Filing cab ltr stl Olive 1 Dr H1	2	5	6	8	21	
Z24781-2	Duplicating Mach, bench type, 9-1/2" X 13"	3	0	0	0	3	
U817071	Switchboard	1	0	0	0	1	
XD14508	Vestibule tent f/tent Gp sm olive drab	2	0	0	0	2	

PERSONNEL SERVICE COMPANY

MTEL 12-67

MAJOR ITEMS EQUIPMENT LIST  
(RECAPITULATION TOE)

TYPE E

RAM LINE ITEM NO	ITEM NOMENCLATURE (Abbrv)	HQ	PA	PM	REC	TOTAL	REMARKS
J48713-2	Gen Set Gas Eng 5 KW 60 CY 1 & 3 PH 4 wire	2	0	0	0	2	
J45836-6	Gen Set Gas Eng 3 KW 60 CY 1 & 3 PH 4 wire AC 120/240 120/208 V skd mtd	1	0	0	0	1	
K25342-2	Heater Immersion liq fuel fired 30" legs of heater	14	0	0	0	14	
K25479-2	Heater Immersion liq fuel fired 37-1/4" leg of heater	1	0	0	0	1	
K25890-2	Heater space coal or oil 45000 BTU 18-5/8"H	8	4	6	8	26	
L63994-2	Light set gen I'llum 25 outlet	8	0	0	0	8	
C37737-2	Burner Assy space htr	8	4	6	8	26	
L92386-3	Machine Gun light flex	6	0	0	0	6	
M75714-3	Mount tripod machine gun 7.62 millimeter	6	0	0	0	6	
R95114-3	Rifle 7.62 millimeter	18	27	40	58	143	
N96741-3	Pistol Cal .45	1	0	0	0	1	
W32593-3	Tool kit org maint nr 1 common	1	0	0	0	1	

		HQ	PA	PM	REC	TOTAL	REMARKS
W32876-3	Tool kit org maint nr 1 supplemental	1	0	0	0	1	
W95400-2	Trailer amphibious cargo 1/4 Ton 2 wheel	2	0	0	0	2	
W95537-2	Trailer cargo 3/4 Ton 2 wheel	3	0	0	0	3	
W98825-2	Trailer tank water 1-1/4 Ton 2 wheel	1	0	0	0	1	
X39735-2	Truck cargo 3/4 Ton 4 X 4	3	0	0	0	3	
X40009-2	Truck cargo 2- 1/2 Ton 6 X 6 LWB	1	0	0	0	1	
X60833-2	Truck utility 1/4 Ton 4 X 4	2	0	0	0	2	
A03210-8	Accessory outfit gas- oline fld range 33 comp	1	0	0	0	1	
D65002-8	Case fld off mach ply- wood 22-1/2"L, 13-1/4" W, 17"D	3	10	14	3	30	
G852022	Duplicating mach stencil process, hand auto 7-1/4W, 14L	0	1	0	1	22	
F97915-8	Desk fld plywood 22- 5/8"W, 25-7/8"H, 14- 1/2"D	2	1	1	2	6	
P60843-2	Printing and heat de- veloping machine table 8-1/2" w/paper	2	1	1	1	5	
R14154-8	Range outfit gasoline	4	0	0	0	4	
R75709-8	Repair kit tentage	1	0	0	0	1	
S27405-8	Safe 2 shelves 1 drw 2 compartment 26"H, 17"W, 17-1/2"D	1	0	0	0	1	
S58674-8	Screen latrine FMWR OD 55 ft lg 8 pins 10 poles	1	0	0	0	1	

		HQ	PA	PM	REC	TOTAL	REMARKS
U934778	Table folding legs wood top and legs 36"L, 24"W 27-25/32"H	18	27	39	57	141	
V48989-8	Tent Gen purpose med w/o FMWR compl w/pins & poles	2	2	3	4	11	
V49126-8	Tent Gen purpose sml ctn duck FMWR OD w/p&p	2	0	0	0	2	
V49811-8	Tent kitchen fly proof FMWR olive drab compl w/pins & poles	1	0	0	0	1	
V51729-8	Tent liner ctn OK FMWR nt	2	0	0	0	2	
V52003-8	Tent liner ctn permeable tent gen purpose medium	2	2	3	4	11	
W31634-8	Tool kit armorers 42 components	1	0	0	0	1	
Z94247T	Typewriter, 12" carriage: ADPE	1	2	4	6	13	
X80074-8	Typewriter nonptbl 13" paper size 42 to 44 keys elite type	3	10	14	3	30	
V31211-1	TA 312/pt (Telephone)	1	1	1	7	10	
X652588	Trunk locker plywood 31"L, 15-1/8"W, 11-7/8"D, w/tray	4	20	25	5	54	
H423428	Filing cab ltr stl Olive 1 Dr H1	3	7	8	10	28	
Z24781-2	Duplicating Mach, 9-1/2" X 13"	1	0	0	0	1	
U817071	Switchboard	1	0	0	0	1	
X014508	Vestibule tent f/tent Gp sm olive drab	2	0	0	0	2	

## PERSONNEL SERVICE COMPANY

MTEL 12-67MAJOR ITEMS EQUIPMENT LIST  
(RECAPITULATION TOE)

TYPE F

EAM LINE ITEM NO	ITEM NOMENCLATURE (Abbrv)	HQ	PA	PM	REC	TOTAL	REMARKS
K48713-2	Gen Set Gas Eng 5 KW 60 CY 1 & 3 PH 4 wire	2	0	0	0	2	
J45836-6	Gen Set Gas Eng 3 KW 60 CY 1 & 3 PH 4 wire AC 120/240 120/208 V skd mtd	1	0	0	0	1	
K25342-2	Heater Immersion liq fuel fired 30" legs of heater	14	0	0	0	14	
K25479-2	Heater Immersion liq fuel fired 37-1/4" leg of heater	1	0	0	0	1	
K25890-2	Heater space coal or oil 45000 BTU 18-5/8"H	8	6	8	10	32	
L63994-2	Light set gen Illum 25 outlet	8	0	0	0	8	
C37737-2	Burner Assy space htr	8	6	8	10	32	
L92386-3	Machine Gun light flex	7	0	0	0	7	
M75714-3	Mount tripod machine gun 7.62 millimeter	7	0	0	0	7	
R95114-3	Rifle 7.62 millimeter	22	32	48	69	171	
M96741-3	Pistol Cal .45	1	0	0	0	1	
M32593-3	Tool kit org maint nr 1 common	1	0	0	0	1	

		HQ	PA	PM	REC	TOTAL	REMARKS
W32876-3	Tool kit org maint nr 1 supplemental	1	0	0	0	1	
W95400-2	Trailer amphibious cargo 1/4 Ton 2 wheel	2	0	0	0	2	
W95537-2	Trailer cargo 3/4 Ton 2 wheel	3	0	0	0	3	
W98825-2	Trailer tank water 1- 1/4 Ton 2 wheel	1	0	0	0	1	
X39735-2	Truck cargo 3/4 Ton 4 X 4	3	0	0	0	3	
X40009-2	Truck cargo 2-1/2 Ton 6 X 6 1WB	1	0	0	0	1	
X60833-2	Truck utility 1/4 Ton 4 X 4	2	0	0	0	2	
A03210-8	Accessory outfit gas- oline fld range 33 comp	1	0	0	0	1	
D65002-8	Case fld off mach ply- wood 22-1/2"L, 13-1/4"W, 17"D	4	12	18	5	39	
G852022	Duplicating mach stencil process, hand auto 7-1/4W, 14L	0	1	0	1	2	
F97915-8	Desk fld plywood 22-5/8"W 25-7/8"H, 14-1/2"D	3	1	1	2	6	
P60843-2	Printing and heat de- veloping machine table 8-1/2" w/paper	2	1	1	2	6	
R14154-8	Range outfit gasoline	4	0	0	0	4	
R75709-8	Repair kit tentage	1	0	0	0	1	
S27405-8	Safe 2 shelves 1 drw 2 compartment 26"H, 17"W, 17-1/2"D	1	0	0	0	1	
S58674-8	Screen latrine FMWR OD 55 ft lg 8 pins 10 poles	1	0	0	0	1	

		HQ	PA	PM	REC	TOTAL	REMARKS
U934778	Table folding legs wood top and legs 36"L, 24"W, 27- 25/32"H	22	32	27	68	169	
V48989-8	Tent Gen purpose med w/o FMWR compl w/pins and poles	2	3	4	5	14	
V49126-8	Tent Gen purpose sml ctn duck FMWR OD w/p&p	2	0	0	0	2	
V49811-8	Tent kitchen fly proof FMWR olive drab compl w/pins and poles	1	0	0	0	1	
V51729-8	Tent liner ctn OX FMWR nt	2	0	0	0	2	
V52003-8	Tent liner ctn permeable tent gen purpose medium	2	3	4	5	14	
W31634-8	Tool kit armorers 42 components	1	0	0	0	1	
Z94247T	Typewriter, 12" carriage: ADPE	2	4	4	8	18	
X80074-8	Typewriter nonptbl 13" paper size 42 to 44 keys, elite type	4	12	18	5	39	
V31211-1	TA 312/pt (Telephone)	2	2	1	3	8	
X65258-C	Trunk locker plywood 31"L, 15-1/8"W, 11- 7/8"D, w/tray	5	26	30	5	66	
H42342-8	Filing cab ltr stl olive 1 Dr H1	3	7	10	12	32	
Z24781-2	Duplicating Machine, bench type, 9-1/2" X 13"	1	0	0	0	1	
U817071	Switchboard	1	0	0	0	1	
X014508	Vestibule tent f/tent Gp sm olive drab	2	0	0	0	2	

PERSONNEL SERVICE COMPANY

MTEL 12-67

MAJOR ITEMS EQUIPMENT LIST  
(RECAPITULATION TOE)

TYPE G

RAM LINK ITEM NO	ITEM NOMENCLATURE (Abbrv)	HQ	PA	PM	REC	TOTAL	REMARKS
J48713-2	Gen Set Gas Eng 5 KW 60 CY 1 & 3 PH 4 wire	2	0	0	0	2	
J45836-6	Gen Set Gas Eng 3 KW 60 CY 1 & 3 PH 4 wire AC 120/240 120/208 V skd mtd	1	0	0	0	1	
K25342-2	Heater Immersion liq fuel fired 30" legs of heater	16	0	0	0	16	
K25479-2	Heater Immersion liq fuel fired 37-1/4" legs of heater	1	0	0	0	1	
K25890-2	Heater space coal or oil 45000 BTU 18- 5/8"H	10	6	8	16	40	
L63994-2	Light set gen I'llum 25 outlet	8	0	0	0	8	
C37737-2	Burner Assy space htr	10	6	8	16	40	
L92386-3	Machine Gun light flex	7	0	0	0	7	
M75714-3	Mount tripod machine gun 7.62 millimeter	7	0	0	0	7	
R95114-3	Rifle 7.62 millimeter	25	37	57	92	211	
N96741-3	Pistol Cal .45	1	0	0	0	1	
W32593-3	Tool Kit org maint nr 1 common	1	0	0	0	1	

		HQ	PA	PM	REC	TOTAL	REMARKS
W32876-3	Tool kit org maint nr 1 supplemental	1	0	0	0	1	
W95400-2	Trailer amphibious cargo 1/4 Ton 2 wheel	2	0	0	0	2	
W95537-2	Trailer cargo 3/4 Ton 2 wheel	2	0	0	0	2	
W98825-2	Trailer tank water 1-1/4 Ton 2 wheel	1	0	0	0	1	
X39735-2	Truck cargo 3/4 Ton 4 X 4	3	0	0	0	3	
X40009-2	Truck cargo 2-1/2 Ton 6 X 6 LWB	1	0	0	0	1	
X60833-2	Truck utility 1/4 Ton 4 X 4	2	0	0	0	2	
A03210-8	Accessory outfit gas- oline fld range 33 comp	1	0	0	0	1	
D65002-8	Case fld off mach ply- wood 22-1/2"L, 13-1/4"W, 17"D	5	14	20	6	45	
G852022	Duplicating mach stencil process, hand auto 7-1/4W, 14L	0	1	0	1	2	
P60843-2	Printing and heat de- veloping machine table 8-1/2" w/paper	2	1	1	2	6	
R14154-8	Range outfit gasoline	5	0	0	0	5	
R75709-8	Repair kit tentage	1	0	0	0	1	
S27405-8	Safe 2 shelves 1 drw 2 compartment 26"H, 17"W, 17-1/2"D	2	0	0	0	2	
S58674-8	Screen latrine FMWR OD 55 ft lg 8 pins 10 poles	1	0	0	0	1	

		HO	PA	PM	REC	TOTAL	REMARKS
U934778	Table folding legs wood top and legs 36"L, 24"W, 27-25/32"H	25	37	55	92	209	
V48989-8	Tent Gen purpose med w/o FMWR compl w/pins & poles	2	3	4	8	17	
V49126-8	Tent Gen purpose sml ctn duck FMWR OD w/p&p	2	0	0	0	2	
V49811-8	Tent kitchen fly proof FMWR olive drab compl w/pins and poles	1	0	0	0	1	
V51729-8	Tent liner ctn OX FMWR nt	2	0	0	0	2	
V52003-8	Tent liner ctn permeable tent gen purpose medium	2	3	4	8	17	
W31634-8	Tool kit armorers 42 components	1	0	0	0	1	
Z94247T	Typewriter, 12" carriage; ADPE	3	3	5	9	20	
X80074-8	Typewriter nonptbl 13" paper size 42 to 44 keys elite type	5	14	20	6	45	
V31211-1	TA 312/pt (Telephone)	2	2	2	8	14	
X652588	Trunk locker plywood 31"L, 15-1/8"W, 11-7/8"D, w/tray	5	30	40	8	83	
H42342	Filing cab ltr stl olive 1 Dr H1	4	9	14	18	45	
2247812	Duplicating Machine, bench type, 9-1/2" X 13"	2	0	0	0	2	
U817071	Switchboard	1	0	0	0	1	
X014508	Vestibule tent f/tent Gp sm olive drab	2	0	0	0	2	

PERSONNEL SERVICE COMPANY

MTEL 12-67

MAJOR ITEMS EQUIPMENT LIST  
(RECAPITULATION TOE)

TYPE H

EAM LINE ITEM NO	ITEM NOMENCLATURE (Abbrv)	HQ	PA	PM	REC	TOTAL	REMARKS
J48713-2	Gen Set Gas Eng 5 KW 60 CY 1 & 3 PH 4 wire	3	0	0	0	3	
J45836-6	Gen Set Gas Eng 3 KW 60 CY 1 & 3 PH 4 wire AC 120/240 120/208 V skd mtd	2	0	0	0	2	
K25342-2	Heater Immersion liq fuel fired 30" legs of heater	20	0	0	0	20	
K25479-2	Heater Immersion liq fuel fired 37-1/4" leg of heater	1	0	0	0	1	
K25890-2	Heater space coal or oil 45000 BTU 18- 5/8"H	16	8	14	20	58	
L63994-2	Light set gen I'llum 25 outlet	12	0	0	0	12	
C37737-2	Burner Assy space htr	16	8	14	20	58	
L92386-3	Machine Gun light flex	8	0	0	0	8	
M75714-3	Mount tripod machine gun 7.62 millimeter	8	0	0	0	8	
R95114-3	Rifle 7.62 millimeter	34	63	94	133	324	
M96741-3	Pistol Cal .45	1	0	0	1	2	
M32593-3	Tool Kit org maint nr 1 common	1	0	0	0	1	

		HQ	PA	PM	REC	TOTAL	REMARKS
W32876-3	Tool kit org maint nr 1 supplemental	1	0	0	0	1	
W95400-2	Trailer amphibious cargo 1/4 Ton 2 wheel	3	0	0	0	3	
W95537-2	Trailer cargo 3/4 Ton 2 wheel	4	0	0	0	4	
W98825-2	Trailer tank water 1-1/4 Ton 2 wheel	2	0	0	0	2	
X39735-2	Truck cargo 3/4 Ton 4 X 4	4	0	0	0	4	
X40009-2	Truck cargo 2-1/2 Ton 6 X 6 LWB	2	0	0	0	2	
X60833-2	Truck utility 1/4 Ton 4 X 4	3	0	0	0	3	
A03210-8	Accessory outfit gas- oline fld range 33 comp	1	0	0	0	1	
D65002-8	Case fld off mach ply- wood 22-1/2"L, 13-1/4"W, 17"D	7	40	60	9	116	
F97915-8	Desk fld plywood 22-5/8"W 25-7/8"H, 14-1/2"D	3	2	2	2	9	
P60843-2	Printing and heat de- veloping machine table 8-1/2" w/paper	3	1	4	2	10	
R14154-8	Range outfit gasoline	5	0	0	0	5	
R75709-8	Repair kit tentage	1	0	0	0	1	
S27405-8	Safe 2 shelves 1 drw 2 compartment 26"H, 17"W, 17-1/2"D	2	0	0	0	2	
S58674-8	Screen latrine FMWR OD 55 ft lg 8 pins 10 poles	2	0	0	0	2	

		HQ	PA	PM	REC	TOTAL	REMARKS
U934778	Table folding legs wodd top and legs 36"L, 24"W, 27-25/32"H	34	60	92	134	322	
V48989-8	Tent Gen purpose med w/o FMWR compl w/pins and poles	2	3	7	10	22	
V49126-8	Tent Gen purpose sml ctn duck FMWR OD w/p&p	3	0	0	0	3	
V49811-8	Tent kitchen fly proof FMWR olive drab compl w/pins & poles	1	0	0	0	1	
V51729-8	Tent liner ctn OK FMWR nt	3	0	0	0	3	
V52003-8	Tent liner ctn permeable tent gen purpose medium	2	3	7	10	22	
W31634-8	Tool kit armorers 42 components	1	0	0	0	1	
Z94247T	Typewriter, 12" carriage: ADPE	6	5	15	8	34	
X80074-8	Typewriter nonptbl 13" paper size 42 to 44 keys elite type	7	40	60	9	116	
V31211-1	TA 312 1/2 pt (Telephone)	4	4	4	15	27	
X652588	Trunk locker plywood 31"L, 15-1/8"W, 11-7/8"D, w/tray	7	50	70	11	138	
H423428	Filing cab ltr stl olive 1 Dr H1	12	12	18	18	60	
Z247812	Duplicating Machine, bench type, 9-1/2" X 13"	2	0	0	0	2	
ED14508	Vestibule tent F/tent gen purpose small	3	0	0	0	3	
UB17071	Switchboard	1	0	0	0	1	
852022	Duplicating mach stencil process, hand auto 7-1/4W 14L	0	2	0	2	4	

MTEL 12-67

MISCELLANEOUS MAJOR AND MISSION  
EQUIPMENT JUSTIFICATION

(Includes items not justified elsewhere or are not authorized per  
criteria in AR 310-34)

ITEM NO.	ITEM	PURPOSE	REMARKS
X65258 8	Trunk locker ply-wood 11 X 15, 1/8 X 11-7/8"D w/tray	Provide storage area for unit records and pubs hard copy documents.	Ref Table II, Chap 4, AR 310-34.
V48989 8	Tent GP, med w/pins and poles	Provides sheltered office space for various administrative and records processing matters.	Based on prov and diagrams in AR 600-16 maximum of 15 individuals could work in semi-comfort in one tent (GP, med).
V49126 8	Tent Gen purpose small cotton duck FMWR OD w/pins & poles	To provide shelter for work area.	
V49811 8	Tent kitchen fly proof FMWR olive drab comp w/pins and poles.	Provides shelter space for messing and cooking facilities.	Ref AR 310-34.
V51729 8	Tent liner ctn OX FMWR nat	Required for component of tent, with justification as above.	
F97915 8	Desk fld plywood 22 X 25 X 14	Provides work area and storage space for individual personnel and miscellaneous equipment.	
H42342 8	Filing cab ltr stl, olive 1 Dr H	Provides storage space for daily and transitory administrative matter for input to individual tape records or other action required.	Requirements for indiv cab based on 16% of total auth personnel asg work load, storage and transitory work matter.
X01450 8	Vestibule tent F/ tent gen purpose small	Required for component of tent, with justification as above.	Ref AR 310-34.

CDCAGA Form 27-4  
6 Dec 1965

MTEL 12-67

MISCELLANEOUS MAJOR AND MISSION  
EQUIPMENT JUSTIFICATION

(Includes items not justified elsewhere or are not authorized per  
criteria in AR 310-34)

ITEM NO.	ITEM	PURPOSE	REMARKS
U934778	Table field wood	Provides work area and equipment utilization space.	AR 310-34.
X80074 8	Typewriter nonptbl 13" paper size 42 to 44 keys, elite type.	Provides capability for limited temporary administrative requirements and transactions.	Ref AR 310-34.
V31211 1	TA 312/FT	To provide communication.	
C37737 2	Burner Assy Space Heater	Provides health and comfort for work and quarters area.	1 per heater space 45000 BTU. Ref table II, Chap 4, AR 310-34.
K25890 2	Heater space Coal or Oil 45000 BTU	Provides health and comfort for work and quarters areas.	2 per tent GP med, Ref Table II, Chap 4, AR 310-34.
P60843 2	Printing and Heat Develop mach table	Provides copying capabilities for correspondence, publications, messages and other records where multi copies are required	The communications device automatic typewriter envisioned for use in this branch only provides one hard copy. Additional copies will be necessary for various reasons - distribution, personal files and reference purposes.

CDCAGA Form 27-4  
6 Dec 1965

A-III-88

MTEL 12-67

MISCELLANEOUS MAJOR AND MISSION  
EQUIPMENT JUSTIFICATION

(Includes items not justified elsewhere or are not authorized per  
criteria in AR 310-34)

ITEM NO.	ITEM	PURPOSE	REMARKS
Z94247T	Typewriter, 12" carriage: ADPE	Digit data transmitter device data communications, over digital and voice quality circuits between elements equipped with this device. (Primary means of communications).	Remark 942. Typewriter Automatic electric similar to Type Data Terminal Dura Business Machines. With paper tape punch and read and EAM Card read. Solid state circuitry, 24-Volt DC to 240-Volt AC operation. Complete with on-line electronic modem to voice telephone and radio circuits, w/case. Remark 925 applies.
Z24781 2	Duplicating mach, bench type, 9-1/2" X 13"	Reproduction equipment.	Remark 944. Type AB Dick Model 320 portable.
U81707 1	Switchboard	Self-explanatory.	

CDCAGA Form 27-4  
6 Dec 1965

A-III-89

Personnel Service Company Type H MTEL 12-67

VEHICLE JUSTIFICATION

TYPE VEHICLE	QTY	MAINT EQUIV	TOTAL MAINT EQUIV	JUSTIFICATION
X39735-2 Truck, Cargo, 3/4 Ton, 4 X 4	4	1.	4.	Required for transportation for normal troop movement and other requirements. Operational necessity movement between remote area location and transport of supplies and equipment.
X40009-2 Truck, Cargo, 2-1/2 Ton, 6 X 6	2	1.	2.	Required for transport of troops, supplies and equipment.
X60533-2 Truck, Utility 1/4 Ton, 4 X 4	3	1.	3.	Required for transportation of unit commander for operational control of unit elements removed from unit headquarters.
W95400-2 Trailer, amphibious, cargo, 1/4 Ton, 2 wheel	3	.20	.60	To transport company headquarters equipment.
W95537-2 Trailer, cargo, 3/4 Ton, 2 wheel	4	.20	.80	To transport unit supplies.
W98825-2 Trailer, tank, water, 1-1/2 Ton, 2 wh	2	.20	.40	To transport and provide water.
			10.80	
<p>This is for Type H only. Requirements for Types A through G can be determined by referring to major items of equipment list.</p>				

Personnel Service Company

MTEL 12-67

**GENERATOR AND LIGHT SET JUSTIFICATION**

(Including Component Generators)

ITEM NO.	ITEM	MAINT EQUIV	PURPOSE	REMARKS
J487132	Gen set gas eng 5 KW 60 CY 1 & 3 PH 4 wire	.16	Provides power for equipment and operational necessity to fulfill the organizational mission	Ref: para 25, AR 310-34.
J458366	Gen set gas eng 3 KW 60 CY 1 & 3 PH 4 wire	.16	Provides power for equipment and operational necessity to fulfill the organizational mission.	Ref: para 25, AR 310-34.
L639942	Light set gen illum 25 outlet		Provides lights for lighting purposes (Sheltered office space, other requirements necessitating lights.	Ref: AR 310-34.

CDCAGA Form 27-3  
6 Dec 1965

A-III-91

TOE/MTEL 12-67

REQUIREMENT FOR ORGANIC COMMUNICATIONS

UNIT Personnel Service Company (Type H) PROPONENT USACDCCSSG

Net Number and Designation: Other Nets

Purpose: Operational Control Liaison

Range: 50 KM Alternate Means: Messenger/Mail

Remarks: Operated by Personnel Assigned

STA NO.	USER	EQUIPMENT		DST	REMARKS
		QTY	NOMEN		
	Co Hq	4	TA 312/PT		
	Pers Mgmt	4			
	Pers Actions Tm	4			
	Rec Proc Tm	15			
	Co Hq	1	Switch-board		
<p>This is for Type H only. Requirements for Types A through G can be determined by referring to major items of equipment list.</p>					

**ANNEX A**

**APPENDIX IV**

**ADMINISTRATIVE SERVICE DETACHMENT**

SECTION I - GENERAL

1. Title. Administrative Service Detachment.

2. Organization. The detachment consists of two sections and a headquarters element as shown in Figure A-IV-1.

3. Mission. To provide centralized administrative services support consisting of reproduction and unclassified records library services for all units serviced by the Personnel and Administration Battalion in the Army/Corps Support Brigade of the FASCOM.

4. Capabilities.

a. Install, operate, and maintain reproduction facility to provide volume reproduction services to units serviced by the Personnel and Administration Battalion when the page quantity required by a serviced unit exceeds the capability of reproduction equipment or personnel within the requesting unit. Reproduction services include duplicating, collating, binding, packaging, and mailing to requesting units for further distribution.

b. Install, operate, and maintain central records library activity to provide a centralized single source of publications and file record storage and retrieval for use by major commands and units serviced by the Personnel and Administration Battalion. All applicable Department of Defense, Department of the Army, Theater Army, and other major headquarters unclassified documents distributed to units are maintained in the library. File services included are correspondence, messages, and all other manner

of written, typed, printed, or drawn communications (Figure A-IV-2).

c. Coordinate with headquarters, commands, and units of all serviced elements concerning reproduction and library services.

d. Dependent on automatic data processing equipment of TOE 29-540, or TOE 54-22 for computer random access magnetic storage facility.

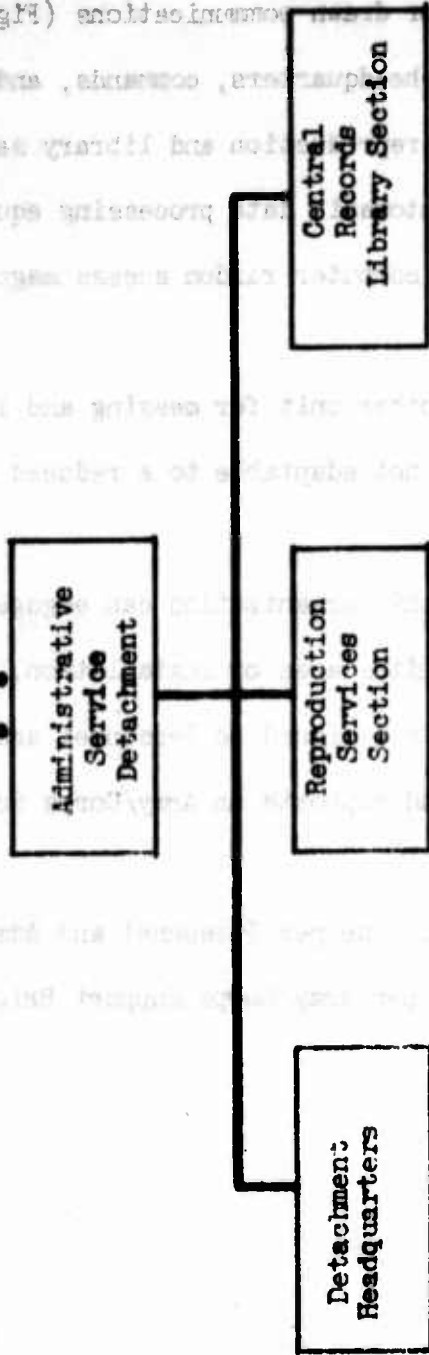
e. Dependent on another unit for messing and logistical support.

f. These units are not adaptable to a reduced strength organization.

g. Individuals of this organization can engage in effective coordinated defense of the unit's area or installation.

5. Assignment. Normally assigned to Personnel and Administration Battalion when established and supports an Army/Corps Support Brigade in the FASCOM.

6. Basis of Allocation. One per Personnel and Administration Battalion (TOE 12-66) or one per Army/Corps Support Brigade in the FASCOM.



**FIGURE A-IV-1 ADMINISTRATIVE SERVICE DETACHMENT**

**A TYPE CENTRAL RECORDS LIBRARY SUPPORT**

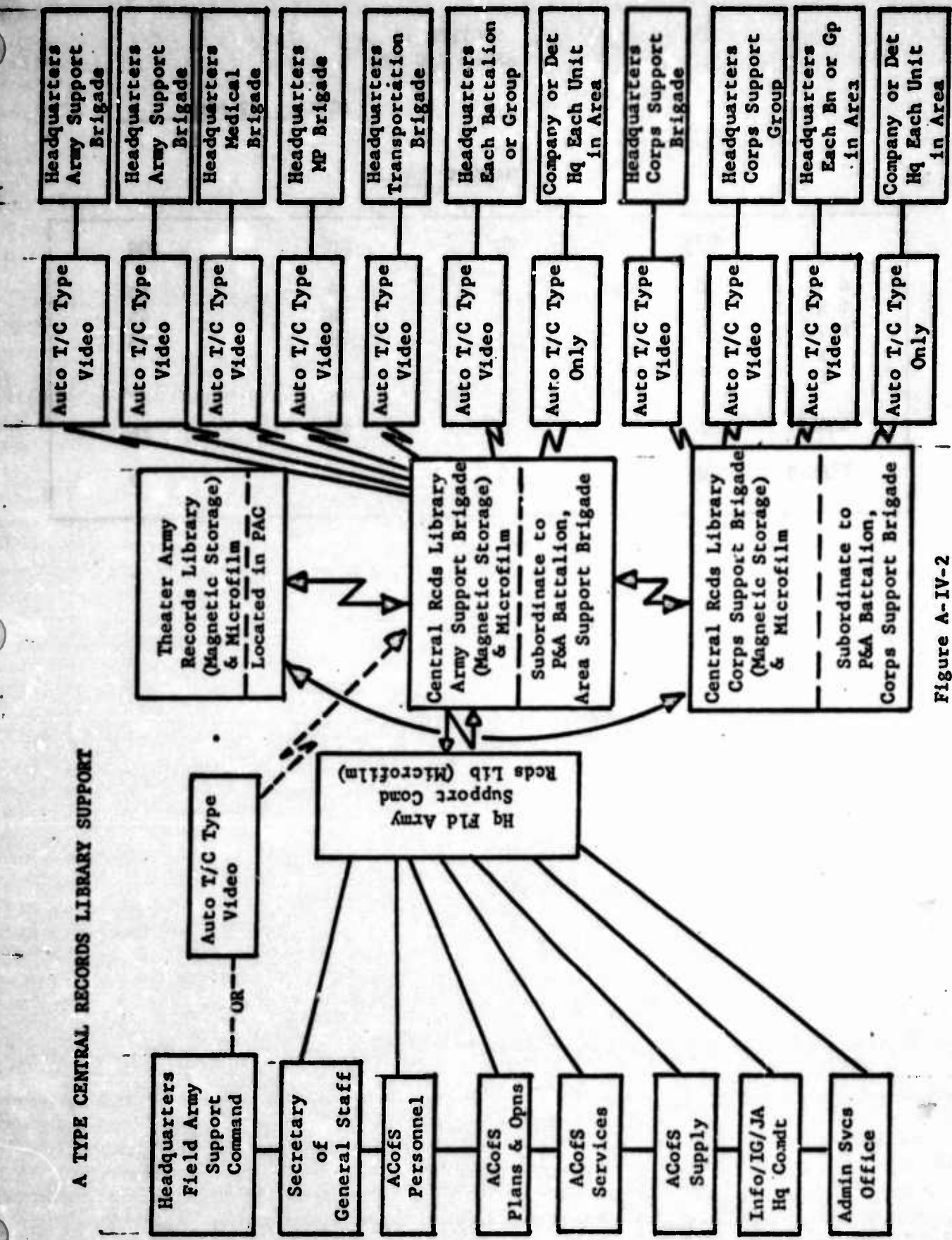


Figure A-IV-2

**SECTION II  
ADMIN SVC DET**

**MTEL 12-570**

**MANNING TABLE**

	<u>OFF</u>	<u>WO</u>	<u>EM</u>	<u>AGG</u>
SL - 1	3	1	39	43
TE - 2	3	1	39	43
RV - 3	3	1	39	43
E L				
CADEE	1	1	24	26
TYPE B	0	0	0	0

MTEL 12-570

ADMINISTRATIVE SERVICE DETACHMENT HEADQUARTERS  
MANNING TABLE

01					
	OFF	WO	EM	AGG	
SL-1	0	0	10	10	
TE-2	0	0	10	10	
RV-3	0	0	10	10	
E					
L					
CADRE	0	0	8	8	
TYPE B					

Line	Duty Position	Br	MOS	Grade	STR LEVEL			TYPE B	CADRE	FMKS
					1	2	3			
01	Supply Sgt	NC	76K40	E-6	1	1	1	0	1	
02	Motor Sgt	NC	63B40	E-5	1	1	1	0	1	
03	Elec Devices Repm		34C20	E-5	1	1	1	0	1	01
04	First Cook		94B20	E-5	1	1	1	0	1	41
05	Det Clerk		71H20	E-4	1	1	1	0	1	40/01
06	Supply Clerk		76K20	E-4	1	1	1	0	1	05/01
07	Sr Switchboard Opr		72C20	E-4	2	2	2	0	1	01
08	Pwr Plant opr/mech		52B30	E-4	1	1	1	0	1	
09	Mechanics Helper		63A10	E-3	1	1	1	0	0	02

Remarks:

All personnel armed with rifle 7.62 mm unless otherwise indicated.

01 Also light truck driver

02 Also heavy truck driver

05 Also armorer

40 Also unit mail clerk

41 Det attached to other unit for mess purposes; duty in unit to which attached.

MTEL 12-570

REPRODUCTION SERVICES SECTION  
MANNING TABLE

02	OFF	WO	EM	AGG
S L-1	1	0	9	10
T E-2	1	0	9	10
R V-3	1	0	9	10
E L				
CADRE	0	0	4	4
TYPE B	0	0	0	0

Line	Duty Position	Br	MOS	Grade	STR LEVEL			TYPE B	CADRE	FMKS
					1	2	3			
01	Section Chief	AG	2110	Capt	1	1	1	0	0	
02	Section Supv	NC	71L40	E-7	1	1	1	0	1	
03	Sr Repro Mach Opr		71L20	E-5	2	2	2	0	1	
04	Sr Proc Sp		71L20	E-5	2	2	2	0	1	
05	Repro Mach Opr		71B20	E-4	2	2	2	0	1	
06	Clerk General		70A10	E-3	2	2	2	0	0	44

All personnel armed with rifle 7.62 mm Lt B1 unless otherwise indicated.

44 One is also heavy truck driver.

MTEL 12-570

CENTRAL RECORDS LIBRARY SECTION  
MANNING TABLE

	OFF	WO	EM	AOO
S L-1	2	1	20	23
T E-2	2	1	20	23
R V-3	2	1	20	23
E				
L				
CADRE	1	1	12	14
TYPE B	0	0	0	0

Line	Duty Position	Br	MOS	Grade	STR LEVEL			TYPE B	CADRE	RMKS
					1	2	3			
01	Section Chief	AG	2110	Maj	1	1	1	0	1	11/27
02	Asst Sec Chief	AG	2110	Capt	1	1	1	0	0	
03	Rpts, Rcds, Forms Mgt Off	AG	712A	WO	1	1	1	0	1	
04	Section Supv	NC	71L50	E-8	1	1	1	0	1	42
05	Input & Str Br Supv	NC	71L40	E-7	1	1	1	0	1	
06	Retrieval & Display Br Supv	NC	71L40	E-7	1	1	1	0	1	
07	Chief Librarian	NC	71L40	E-6	1	1	1	0	1	
08	Asst R&D Br Supv	NC	71L40	E-6	1	1	1	0	1	
09	Sr Doc Recording Supv	NC	71L40	E-6	1	1	1	0	1	
10	Sr File Retrieval & Display Sp		71L40	E-6	1	1	1	0	1	
11	Doc Recording Sp		71L20	E-5	3	3	3	0	2	
12	File Retrieval & Display Sp		71L20	E-5	3	3	3	0	2	
13	Doc Recording Sp		71L20	E-4	2	2	2	0	0	
14	File Retrieval & Display Sp		71L20	E-4	3	3	3	0	0	
15	Clk Typist (Auto T/C Typewriter)		71B20	E-4	2	2	2	0	1	02

CDGAGA Form 26  
6 Dec 1965

MTL 12-570

CENTRAL RECORDS LIBRARY SECTION (CONT.)  
MANNING TABLE

	OFF	WO	EM	AGG
S L-1				
T E-2				
R V-3				
E				
L				
CADRE				
TYPE B				

Line	Duty Position	Br	MOS	Grade	STR LEVEL			TYPE B	CADRE	RMKS
					1	2	3			

Remarks:

- All personnel armed with rifle 7.62 mm unless otherwise indicated.
- 27 Also detachment commander
- 11 Armed with pistol caliber .45
- 42 Also performs duties of first sergeant
- 02 Also heavy truck driver

## PERSONNEL JUSTIFICATION

### Supporting Data for MTEL.

#### a. Administrative Services Detachment Headquarters.

(1) Personnel assigned to the detachment headquarters are required to perform unit headquarters, maintenance, supply, and administration functions. The detachment depends on other units for mess support.

(2) Detailed justification by line number on the manning tables is as follows:

(a) Line 01 - Supply Sergeant, 76K40, E-6, NC. Maintains unit supply records of organic equipment. Requisitions and issues individual field equipment and expendable supplies required in the Central Records Library Section and Reproduction Services Section. Requisitions replacement items and component parts for organic equipment. Supervises other personnel in the detachment headquarters element.

(b) Line 02 - Motor Sergeant, 63B40, E-5. Maintains all vehicles assigned to the detachment. Performs 2d echelon maintenance on organic vehicles and trailers. Keeps records of maintenance, dispatches vehicles and supervises the mechanics helper.

(c) Line 03 - Electronic Devices Repairman, 34C20, E-5. Maintains and repairs display devices, automatic tape/card typewriters, microfilm equipment, duplicating and photocopying machines, scanner, and buffer. Also a light truck driver.

(d) Line 04 - First Cook, 94B20, E-5. Authorized by paragraph 4e(1)(c), AR 310-32.

(e) Line 05 - Detachment Clerk, 71H20, E-4. Authorized by paragraph 8c(7), AR 310-32. Maintains unit headquarters files, types correspondence as required, is the unit mail clerk, and is also a light truck driver.

(f) Line 06 - Supply Clerk, 76K20, E-4. Assists unit supply sergeant in maintaining unit supply records and requisitions of supply items. Also is unit armorer and light truck driver.

(g) Line 07 - Senior Switchboard Operator, 72C20, E-4 (2). Receives and routes traffic for library service by telephone, display units, and automatic tape/card typewriter, and normal unit communications requirements for a two-shift, 24-hour operation.

(h) Line 08 - Power Plant Mechanic/Operator, 52B30, E-4. Maintains and repairs the two diesel powered generators under the supervision of the unit supply sergeant; is also a light truck driver.

(i) Line 09 - Mechanics Helper, 63A10, E-3. Assists motor sergeant in maintaining and repairing unit vehicles; is also a heavy truck driver.

b. Reproduction Services Section.

(1) One officer and 9 enlisted personnel are the minimum number required to adequately provide the reproduction services outlined in the concept of operations. Several assumptions were made in developing this type organization. First, the Reproduction Services Section is operational on a 24-hour basis. Second, large volume reproduction services are required to adequately service Field Army and Corps units. Third, a rapid means to receive final copy requests for reproduction and to distribute reproduced documents is required.

(2) Detailed justification by line numbers on the manning tables is as follows:

(a) Line 01 - Section Chief, Capt, AG, 2110. Performs as officer in charge of the section. Supervises large volume reproduction services for serviced units, timely delivery of product to requesting agency, and maintenance of necessary records.

(b) Line 02 - Section Supervisor, 71L40, E-7, NC. Performs as the Senior Non-Commissioned Officer of the section. Assists Section Chief, supervises workload distribution, and establishes work requirements of assigned enlisted personnel.

(c) Line 03 - Senior Reproduction Machine Operator, E-5 (2) and Line 04 - Reproduction Machine Operator, 71L20, E-4 (2). Prepare paper masters from requests received on the automatic tape/card typewriter and hard copy documents, operate offset duplicating machine, maintain records of work performed, clean and maintain machines (first echelon maintenance), and maintain sufficient working materials in work area. Sufficient personnel are assigned for two 12-hour shift operations.

(d) Line 05 - Processing Specialist, 71L20, E-5 (2), and Line 06 - General Clerk, 71A10, E-3 (2). Perform the collating, stapling or binding, packaging, addressing labels, and dispatching of the reproduced materials; maintain stock of expendable supplies for the section; and operate the automatic tape/card typewriter. The general clerks are also heavy truck drivers.

c. Central Records Library Section.

(1) Two officers, one warrant officer, and 20 enlisted personnel are the minimum number required to adequately provide library services. Two assumptions were made in developing the organization. First, the central records library section is required to be fully operational on a 24-hour basis. Second, automatic equipment as outlined in the concept of operations and shown on the equipment list will be available for handling the majority of input and retrieval actions.

(2) Detailed justification by branch is as follows:

(a) Section Headquarters - Line 01, 02, 03, 04 and 15.

The Section Chief, Maj, AG, 2100, is responsible for and supervises the central records library section. He is also the administrative service detachment commander. Operations of the library include receipt of all record documents for processing and transmission to the computer random access storage facility; providing document descriptor service to serviced units; providing files search service and hard copy print-out or transmission to serviced units; and maintaining microfilm library and retrieval services. He is assisted by a Capt, AG, 2110. The one warrant officer is primarily concerned with establishing and monitoring reports and forms management and records retention policies and procedures at all levels in the army or corps area serviced, to include the records maintained in the computer random access storage. He also maintains liaison with the Theater Army and other records libraries. The library section supervisor, 71L50, E-8, NC, is the principal enlisted assistant in the section. He

supervises workload distribution, establishes work requirements of enlisted personnel, and is also the detachment first sergeant. The clerk typist performs duties as required.

(b) Input and Storage Branch - Line 05, 07, 09, 11, 13. One E-7 is required to supervise the branch. He is assisted by the chief librarian who is also responsible for the indexing, description techniques, and publication of appropriate procedural guidance to all serviced units. The requirement for six document recording specialists was determined by an estimate of the workload as follows:

1 15,000 document pages per day are generated by major command headquarters elements and units within the army or corps area serviced, for input to the random access magnetic storage facility.

2 There is a five percent reject rate from the optical scanner which must be processed manually to add or modify descriptor detail for acceptance in the system.

3 Each document recording specialist can process 12 documents per hour on a 12-hour shift. This totals 864 documents, which accommodates the anticipated reject rate. Additionally, a small volume of documents is maintained in the microfilm facility. Two document recording specialists are also responsible for proper input to the microfilm system.

(c) Retrieval and Display Branch - Line 06, 08, 10, 12, 14, and 15. One E-7 and one #-6 are required to supervise the information retrieval function as outlined in the concept of operations. The requirement for seven file retrieval and display specialists was determined by an estimate of the workload. Requests for information or assistance

are received at this branch by automatic tape/card typewriter, video display units, or basic (telephone) communications. An estimated 2,000 requests for information from magnetic storage will be made by staff sections using the video display device. One quarter of these requests (500) will be rerouted through the retrieval and display branch for assistance. Additionally, 410 requests are received at the retrieval and display branch from company size units using the automatic tape/card typewriters.

MTEL 12-570

ADMINISTRATIVE SERVICE DETACHMENT HEADQUARTERS  
(UNIT TITLE)

MAJOR ITEMS EQUIPMENT LIST

EAM LINE ITEM NO.	ITEM NOMENCLATURE (ABBRV)	AUTHORIZATION																
		01	02	03	04	05	06	07	08	09	10	11	12	13	14	15	16	TOTAL
V489898	Tent, Gp, med W/O FMWWR Comp w/pins & poles	1																
D650028	Case Field office mach, 22½L, 13¼W, 17D	1																
H425278	File Cabinet, Steel, 1 security 1 dr 12-3/8"H, 15-7/16W, 17D	1																
X802118	Typewriter, nonptbl 13" carriage, elite type	1																
W330048	Tool kit, gen mach	1																
W465678	Tool kit, ofc mach general repair	1																
R951143	Rifle 7.62mm semi- automatic, lt bl	10																
S751752	Semi-trailer van 12 ton, 4 wheel (to contain comp equipment of CFL and Repro units) air conditioned.	3																
EO28072	Chassis, trailer generator	2																
W955372	Trailer, 3/4 ton cargo	1																

CDCAGA Form 27  
6 Dec 1965

MTEL 12-570

ADMINISTRATIVE SERVICE DETACHMENT HEADQUARTERS  
(UNIT TITLE)

MAJOR ITEMS EQUIPMENT LIST

EAM LINE ITEM NO.	ITEM NOMENCLATURE (ABBRV)	AUTHORIZATION																
		01	02	03	04	05	06	07	08	09	10	11	12	13	14	15	16	TOTAL
W954002	Trailer, cargo 1/4 ton, 2 wh w/e	1																
X591892	Truck-tractor, 5 ton 6 x 6 swb	3																
X400092	Truck, cargo 2 1/2 ton 6 x 6 LWB	2																
X397352	Truck, cargo 3/4 ton	2																
X608332	Truck, util, 1/4 ton 4 x 4	1																
S974091	Shelter, elec, eqpt. S-141G	1																
U822551	Switchboard, tele- phone, manual SB-86/P	1																
V312111	Telephone set, TA 312/pt	2																
J359722	Generator Set, diesel eng, 15KW 60 cy 3 ph AC 127/220 V 12.5KW	2																
5433102	Scale, dial ind bench-cntr style 0-250 lb	1																
W379363	Tool kit, elect repm	1																

CDCAGA Form 27  
6 Dec 1965

ADMINISTRATIVE SERVICE DETACHMENT HEADQUARTERS

MTEL 12-570

(UNIT TITLE)

MAJOR ITEMS EQUIPMENT LIST

EAM LINE ITEM NO.	ITEM NOMENCLATURE (ABBRV)	AUTHORIZATION																
		01	02	03	04	05	06	07	08	09	10	11	12	13	14	15	16	TOTAL
Z94247T	Typewriter 12 in. carriage: ADPE	1																
F979158	Desk field: 2 folding stools 25-5/8W, 25-7/8H, 14-1/2D in.	8																
U934778	Table, Folding legs wood: solid top 36L, 24W, 27-25/32H	2																

CDGAGA Form 27  
6 Dec 1965

REPRODUCTION SVCS SECTION  
(UNIT TITLE)

MOEL 12-570

MAJOR ITEMS EQUIPMENT LIST

EAM LINE ITEM NO.	ITEM NOMENCLATURE (ABBRV)	AUTHORIZATION																
		01	02	03	04	05	06	07	08	09	10	11	12	13	14	15	16	TOTAL
D651398	Case Field Office Mach: 26 $\frac{1}{2}$ L, 13 $\frac{1}{4}$ W, 17D.																	
F521668	Collator, paper mach, floor model, 20 sheet capacity.		2															
H429478	File cabinet, stl, security, 1 dr, 12-3/8H, 15-7/16W, 17D.		2															
X802118	Typewriter, nonptal 15" carriage, elite type.		1															
R951143	Rifle 7.62mm semi- automatic lt bl		10															
V312111	Telephone set TA 312/PT		2															
X652588	Trunk, locker, metal wood, metal reinf 31L, 17W, 13 D.		3															
Z94247T	Typewriter 12 in. carriage: ADPE		1															
Z479642	Waste Basket, Electric paper shredder		1															

DDAGA Form 27  
6 Dec 1965

REPRODUCTION SVCS SECTION  
(UNIT TITLE)

MAJOR ITEMS EQUIPMENT LIST

EAM LINE ITEM NO.	ITEM NOMENCLATURE (ABBRV)	AUTHORIZATION																
		01	02	03	04	05	06	07	08	09	10	11	12	13	14	15	16	TOTAL
Z247862	Duplicating mach: offset floor 10½ x 16½"		2															
4287018	Stapling machine paper office: elec. operated (use w/spool wire)		2															
Z0822022	Machine, electro- static; offset master maker		1															
F979158	Desk field: 2 folding stools 25-5/8W, 25-7/8H, 14-1/2D in.		2															
U934778	Table folding legs wood: solid top 36L, 24W, 27-25/32H		4															

CENTRAL RECORDS LIBRARY SEC  
(UNIT TITLE)

MTEL 12-570

MAJOR ITEMS EQUIPMENT LIST

EAM LINE ITEM NO.	ITEM NOMENCLATURE (ABBRV)	AUTHORIZATION																
		01	02	03	04	05	06	07	08	09	10	11	12	13	14	15	16	TOTAL
N967413	Pistol, semi- automatic, cal.45			1														
R951143	Rifle 7.62mm, semi- automatic, 1t bbl			22														
V312111	Telephone Set, TA-312/PT			7														
Z04247T	Typewriter, 12 in. carriage: ADPE			13														
Z23141T	Display Equip: ADPE			4	- Remark	940	applies.											
Z23141T	Display Equip: ADPE			1	- Remark	941	applies.											
Z42906T	Microfilm System: w/film processing retrieval and viewing equipment.			1														
Z205377	Data Converter: ADPE			1														
F979158	Desk Field: 2 folding stools 25-5/8W, 25-7/8H, 14-1/2D in.			5														
U934778	Table Folding Legs Wood: Solid Top 36L, 24W, 27-25/32H			3														

CDCAGA Form 27  
6 Dec 1965

ADMIN SVC DET HQ

MTEL 12-570.

MISCELLANEOUS MAJOR AND MISSION  
EQUIPMENT JUSTIFICATION

(Includes items not justified elsewhere or are not authorized per  
criteria in AR 310-34)

ITEM NO.	ITEM	PURPOSE	REMARKS
W33004 8	Tool Kit, gen mech	To equip one general mechanic, one mechanic's helper, and one powerman.	
W46567 8	Tool Kit, office machine: General repair.	To equip the electric services repairman, who maintains the offset duplicating machines, the electric tape/card typewriters, and the non-electric typewriters.	
S97409 1	Shelter, elec equipment, S-141/G	To be used with one 3/4 ton truck to shelter truck mounted switchboard, telephone, manual, SB-86/P	
S43310 2	Scale, dia indicating Bench-counter style, 0-250 lbs.	To weight outgoing packaged material reproduced for serviced elements when Army Post Office facilities are utilized.	
W37936 3	Tool Kit, electronic repairman.	To equip the electronic repairman, who maintains all ADP and related equipment in the CRL.	
U82255 1	Switchboard, telephone, manual, SB-86/P	To handle all incoming transmissions for input to the library, requests for library service, and transmissions to remote display devices in stall sections of supported headquarters. Most incoming and outgoing transmissions are via	

CDCAGA Form 27-4  
6 Dec 1965

ADMIN SVC DET HQ

MTEL 12-570

MISCELLANEOUS MAJOR AND MISSION  
EQUIPMENT JUSTIFICATION

(Includes items not justified elsewhere or are not authorized per  
criteria in AR 310-34)

ITEM NO.	ITEM	PURPOSE	REMARKS
Z94247T	Typewriter, 12 in. Carriage: ADPE	the electric tape/card typewriter of which there are 13 in the Central Records Library, one in the Reproduction Branch, and one in Detachment Headquarters.  To communicate with out- side elements concerning personnel and admini- stration, logistics, and other unit administration traffic.	Typewriter automatic elec similar to Type Data Terminal Dura Business machines. With paper tape punch and read and EAM Card read. Solid state circuitry, 24-Volt DC to 240-Vol AC opr. Complete with on-line elec- tronic modem to voice telephone and radio circuits, w/case

CDGAGA Form 27-4  
6 Dec 1965

A-IV-21

Administrative Service Detachment Headquarters

MTEL 12-570

GENERATOR AND LIGHT SET JUSTIFICATION

(Including Component Generators)

ITEM NO.	ITEM	MAINT EQUIV	PURPOSE	REMARKS
J35972 2	Gen St. Dsl Eng; 15 KW 60 cy 3 ph AC 127/220 V 12.5 KW 50 CY 230/400 V	.18	To furnish adequate electric power for the Admin Det headquarters, central records library and reproduction equipment.	

ADMINISTRATIVE SERVICES DETACHMENT HEADQUARTERS

MEEL 12-570

VEHICLE JUSTIFICATION

TYPE VEHICLE	QTY	MAINT EQUIV	TOTAL MAINT EQUIV	JUSTIFICATION
Semi-trailer, van, 12 ton, 4 wheel (similar to EAM Line item 439027) air conditioned.	3	.5	1.5	All library equipment, including ADP peripherals, is mounted in van type trailers. Such equipment requires climatic controls for proper operation.
Truck-tractor, 5 ton	3	1.5	4.5	Prime mover for van type trailers.
Chassis, trailer, generator	2	.4	.8	Mounts for 15 KW generators.
Trailer, amphib, cargo, 1/4 ton, 2 wheel	1	.2	.2	To transport unit hq equipment.
Truck, 1/4 ton utility	1	.1	.1	Command and Administration
Truck, 2 1/2 ton	1	.1	.1	To transport a large volume of reproduction operations expendables (paper, etc.) and unit supplies.
Truck, 3/4 ton	1	.1	.1	To transport tool set, organizational common, Nr. 1.
Truck, 3/4 ton	1	.1	.1	Mount for shelter, S-141/G, one SB-83P switchboards, and one telephone terminal.
Trailer, 3/4 ton	1	.2	.2	To transport signal tool set, field wire, and related signal equipment.
			10.3	

REPRODUCTION SERVICES SECTION

MTEL 12-570

MISCELLANEOUS MAJOR AND MISCELLANEOUS  
EQUIPMENT JUSTIFICATION

(Includes items not justified elsewhere or are not authorized per  
criteria in AR 310-34)

ITEM NO.	ITEM	PURPOSE	REMARKS
F52166 8	Collator paper mach floor model 20 sheet capacity.	To collate the large volume of material that has been reproduced.	
H42947 8	File Cabinet, steel, security, 1 drawer, 12-3/8H, 15-7/16W, 17 D.	For safekeeping of classified documents.	
Z94247T	Typewriter, 12 in. Carriage: ADPE	To receive requests for reproduction in final form.	Typewriter Automatic elec similar to Type Data Terminal Dura Business Machines. With paper tape punch and read and EAM Card read. Solid state circuitry, 24-Volt DC to 240-Volt AC opr. Complete with on-line electronic modem to voice telephone and radio circuits w/case.
Z47964T	Waste Basket, elec: paper shredder.	To shred classified documents when required.	Similar to Type Destroyit Model 52 w/1/32 in. shred used to facilitate destruction of classified material and other documents at a major headquarters.
Z247862	Duplicating machine: offset, floor, 10 1/2" x 16 1/2"	For large volume reproduction service to all supported units.	Type AB Dick Model 367A.
Z082202	Machine Electrostatic: offset master maker.	To produce printable offset paper mat from legible written, typed or printed matter.	Type Bruning 2000 provides offset process paper masters for large volume reproduction and a copying machine for small volume reproduction.

CDCAGA Form 27-4  
6 Dec 1965

CENTRAL RECORDS LIBRARY SECTION

MTEL 12-570

MISCELLANEOUS MAJOR AND MISSION  
EQUIPMENT JUSTIFICATION

(Includes items not justified elsewhere or are not authorized per  
criteria in AR 310-34)

ITEM NO.	ITEM	PURPOSE	REMARKS
Z94247T	Typewriter, 12" carriage: ADPE	Used for receipt and patch of library data. All supported units/headquarters/elements throughout transmit data for input to library by automatic tape/card typewriter.	Typewriter Automatic elec similar to Type Data Terminal Dura Business Machines. With paper tape punch and read and EAM Card read. Solid state circuitry, 24-Volt DC to 240-Volt AC opr. Complete with on-line electronic modem to voice telephone and radio circuits, w/case
Z42906T	Microfilming System	To be used for large documents such as charts, graphs, and maps which are not practical at this time to be put in the magnetic storage library of the computer.	Type Recordak with microfilming, film processing, and records retrieval equipment.
Z23141T	Display Equipment: ADPE	To visually display the input to and output of the library random access storage of a computer. (Staff sections of battalions and above have similar devices to view portrayed library data direct from the computer, and data relayed to staff sections from the computer through the CRL.)	Rmk 940 applies. Video Display Unit, similar to Type IBM 2260 or Raytheon Model 402/440 units in DIDS sys. 110-Volt opr. Cathode Ray Tube display w/image hold and hard copy production device, complete with on-line electronic modem to voice telephone or radio circuits.

CDCAGA Form 27-4  
6 Dec 1965

CENTRAL RECORDS LIBRARY SECTION

MTET, 12-570

MISCELLANEOUS MAJOR AND MISSION  
EQUIPMENT JUSTIFICATION

(Includes items not justified elsewhere or are not authorized per  
criteria in AR 310-34)

ITEM NO.	ITEM	PURPOSE	REMARKS
Z23141T	Display Equipment: ADPE	Receives electronic im- pulses of library data from scanners and trans- fers such data to the computer. Output of the computer is transmitted through the buffer to display unit in the library or to a typewriter 12" carriage: ADPE.	Rmk 941 applies. Buffer similar to Type IBM 2848 elec- tronic used to connect scanner, video display and automatic typewriter to computer.
Z20537T	Data Converter: ADPE	To convert data on micro- film or hard copy docu- ment media to magnetic buffer storage for input into computer random access storage facility. Must verify descriptor format for proper indexing and retrieval. Must be able to convert hard copy document to paper tape for transmission to units by automatic tape/card typewriter.	Rmk 939 applies. Optical Scanner, similar to Type Philco or NCR 420 w/capability to con- vert hard copy and microfilm to magnetic form and verify descriptor format for input to random access computer storage.

TOE/MTEL 12-570

REQUIREMENT FOR  
ORGANIC COMMUNICATIONS

UNIT Administrative Service Detachment PROPONENT USACDCCSSG

Net Number and Designation: Detachment Headquarters

Purpose: Administrative

Range: 300 KM Alternate Means: Radio/Messenger Postal

Remarks: \_\_\_\_\_

STA NO.	USER	EQUIPMENT		INST	REMARKS
		QTY	NOMEN		
	Det Headquarters	2	TA 312		
		1	SB 86/P	*	*Switchboard, with 50 lines.
	Reproduction Section	2	TA 312		
	Central Records Library Section	7	TA 312		

CDCAGA Form 27-5  
6 Dec 1965

ANNEX A  
APPENDIX V  
ARMY POST OFFICE

## SECTION I

## GENERAL

1. Title. Army Post Office.

2. Organization. The Army Post Office is composed of a headquarters team, mail processing teams, and postal finance teams.

(See Figure A-V-1).

3. Mission. To provide direct support postal services (mail distribution and dispatch, and postal finance) to individuals and units.

4. Capabilities.

a. Each type of Army postal unit can normally serve a population area of 15,000 personnel.

b. The unit receives mail from mail terminals or regulating units (operated by the Postal Company General Support, Personnel Command) and prepares mail for unit collection, and it receives mail from units served and prepares such mail for collection by mail terminals or regulating units.

c. The unit provides postal finance service to individuals.

d. These units are not adaptable to a reduced strength organization.

e. The capabilities of a Type B organization are the same as those of a full strength organization.

(1) The Type B column adapts this TOR to lessened requirements for United States military personnel. Vacancies existing in the Type B column indicate (bulk mail handling only) the types of

positions which can be filled by non-United States personnel. The number of non-United States personnel must be determined by the major commander to which the unit is assigned and will depend upon capacity of available personnel to produce, number of shifts, and other local conditions.

(2) Interpreters and translators required when organized under Type B column will be provided from appropriate teams available to the Theater Commander.

(3) Authorization of United States military personnel shown in the Type B column may be modified by troop basis proponents as required by local area conditions of employment in order to enable the unit to effectively accomplish its mission WAB DA.

f. These units are not self-sufficient and are attached to other units for administration, mess, supply, and motor maintenance.

g. Arms and individual equipment are authorized for United States military personnel only. When non-United States personnel are used, mail guards will be furnished by the unit to which the postal units are attached.

h. Individuals of the unit can engage in effective coordinated defense of the unit's area or installation.

5. Assignment. Normally assigned to Personnel and Administration Battalion, Army/Corps Support Brigade, FASCOM; Area Support Group, ASCOM.

6. Basis of Allocation. Allocated on the basis of strength of forces to be served; reference 4a above.

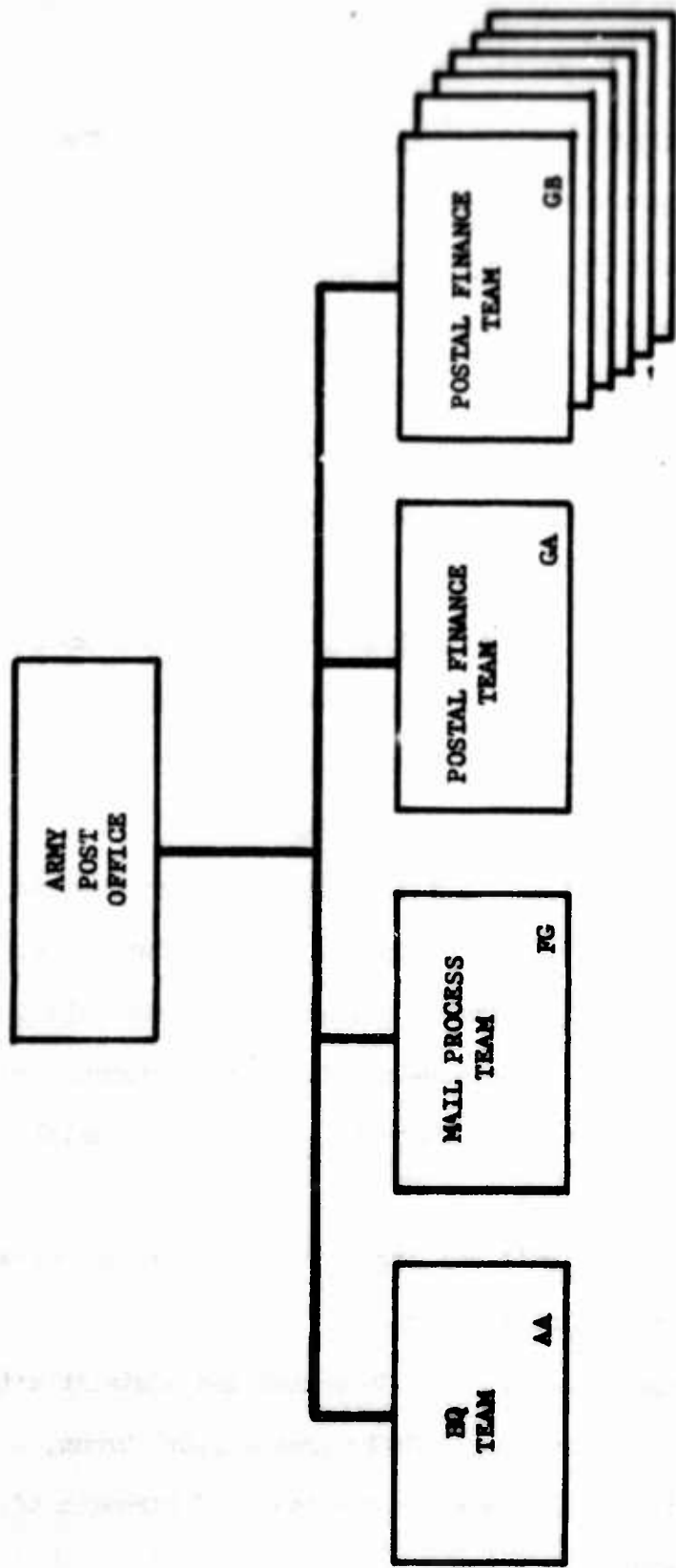


FIGURE A-V-1 ARMY POST OFFICE

ARMY POSTAL OFFICE (APO)

MTL 12-550

MANHOLE TABLE

	OFF	WO	EM	AOO
S L-1	1	0	35	36
T E-2	1	0	35	36
R V-3	1	0	35	36
E				
L				
CADRE	1	0	10	11
TYPE B	0	0	16	16

ARMY POST OFFICE

MTEL 12-550

Par 01 TEAM AA (APO HQ)

MANNING TABLE

	OFF	WO	EM	ACC
S L-1	1	0	2	3
T E-2	1	0	2	3
R V-3	1	0	2	3
E				
L				
CADRE	1	0	1	2
TYPE B	0	0	1	1

Line	Duty Position	Br	MOS	Grade	STR LEVEL			TYPE B	CADRE	RANKS
					1	2	3			
01	Commander	AG	0030	Capt	1	1	1	0	1	11
02	Postal NCO	NC	71F50	E8	1	1	1	0	1	11
03	Clk-Typist		71B30	E4	1	1	1	1	0	01

Remarks

- 01 Also light truck driver.
- 11 Armed with pistol Cal .45.

Far 02 FG (Mail Proc-Modified) MANNING TABLE

	OFF	WO	EM	AOG
S L-1	0	0	20	20
T E-2	0	0	20	20
R V-3	0	0	20	20
E				
L				
CADRE	0	0	3	3
TYPE B	0	0	15	15

Line	Duty Position	Br	MOS	Grade	STR LEVEL			TYPE B	CADRE	RMKS
					1	2	3			
01	Postal Supv	NC	71F40	E7	1	1	1	0	1	11
02	Asst Postal Supv	NC	71F40	E6	2	2	2	0	1	
03	Asst Postal Supv	NC	71F40	E5	2	2	2	0	1	
04	Postal Clerk		71F20	E4	8	8	8	8	0	
05	Asst Postal Clerk		70A10	E3	7	7	7	7	0	01

Remarks

- 01 Also light truck driver.
- 11 Armed with pistol Cal .45.

Par 03 TEAM GA (Postal Finance) **MANNING TABLE**

	OFF	WO	EM	ACC
S L-1	0	0	1	1
T E-2	0	0	1	1
R V-3	0	0	1	1
E L				
CADRE	0	0	1	1
TYPE B	0	0	0	0

Line	Duty Position	Br	MOS	Grade	STR LEVEL			TYPE B	CADRE	FMCS
					1	2	3			
01	Window Clerk		71F30	E5	1	1	1	0	1	01/11

Remarks

- 01 Also light truck driver.
- 11 Armed with pistol Cal .45.

Par 04 TEAM GB (Postal Finance) MANNING TABLE

	OFF	WO	EM	ACG
S L-1	0	0	2	2
T E-2	0	0	2	2
R V-3	0	0	2	2
E				
L				
CADRE	0	0	1	1
TYPE B	0	0	0	0

Line	Duty Position	Br	MOS	Grade	STR LEVEL			TYPE B	CADRE	RMS
					1	2	3			
01	Window Clerk		71F30	E5	1	1	1	0	1	11
02	Asst Window Clerk		71F30	E4	1	1	1	0	0	11 & 01

Remarks

- 01 Also light truck driver.
- 11 Armed with pistol Cal .45.

7. Personnel Justification.

a. General. Personnel authorizations to include grade and position are provided in accordance with AR 310-32, except for postal clerk positions. Postal clerk positions authorized in this MTEL are governed by the following criteria:

(1) Standards of position and grade authorization.

Position titles and grade authorizations for postal personnel are provided in accordance with proposed change to the Postal MOS contained in AGA Postal Operation, TASTA-70.

(2) Manpower authorization criteria. Personnel grade E5 and below are authorized based on area population and in accordance with the following criteria:

(a) One postal clerk for each 1000 persons served for elements involved in mail processing activities.

(b) One window clerk for each 750 to 3000 persons served for elements involved in postal finance activities. Personnel of this category will not process mail.

b. Para 01, Team AA, Army Post Office, Headquarters. The personnel authorized for this team are required for command and control of one mail processing team, and from three to eight postal finance teams. Their specific duties are:

(1) Line 01, Commanding Officer, AGC, MOS 00.0. Cxpt. Commands the Army Post Office and acts as Postal Officer of Headquarters, Area Support Group. Duties include control of from 15 to 36 subordinates, supervision of mail dispatch and delivering operations, and supervision

of postal finance activities. Also acts as the Custodian of Postal Effects.

(2) Line 02, Postal NCO, MOS 71F50, Grade E8. As the senior noncommissioned officer in the Army Post Office, assists the postal officer in all phases of supervisory duties. Must be knowledgeable in all areas of postal operation. Grade E8 is authorized in accordance with standard of grade authorization as proposed in AGA Postal Operation, TASTA-70.

(3) Line 03, Clerk-Typist, MOS 71B30, Grade E4.  
Authorized by para 8c(8) AR 310-32.

c. Para 02, Line 01, Postal Supervisor, MOS 71F40, Grade E7. Supervises 15 or more subordinates in the postal operations of the mail processing team.

(1) Line 02, Assistant Postal Supervisor, MOS 71F40, Grade E6. Acts as chief of a separate team, performs duties as Chief of Control Section, distribution section, and incoming and outgoing activities, and is responsible for supervising the performance of six or more subordinates engaged in mail processing.

(2) Line 03, Assistant Postal Supervisor, MOS 71H40, Grade E5. Acts as assistant chief of a separate team. Supervises the processing of registered, insured, and certified mail. Supervises the operation of a branch distribution point if one is established. If mail transportation schedule requires a twenty-four hour, two-shift operation, he becomes a shift leader.

(3) Line 04 and 05, Postal Clerk, MOS 71F20, Grade E4, and assistant postal clerk, MOS 70A10, Grade E3. Based on criteria of one direct support postal clerk for each 1000 to 1200 persons served, fifteen direct postal clerks are required to meet the 15,000 population served in the Area Support Group, with the additional requirement of serving 3,000 troops assigned to the group.

d. Para 03 and 04, Line 01, Postal Finance Teams, GA and GB. Postal finance teams operate as component elements of Army Post Offices. Based on staffing criteria of one window clerk for each 750 people served the following personnel are required.

(1) Para 03, Line 1 and Para 04, Line 1, window clerk, Grade E5. Postal finance teams normally operate branch post offices away from the parent APO, making the clerk in charge of a branch unit the sole authority for postal information provided to supported units. In addition, the clerk in charge is issued postal funds and equipment of considerable value. Therefore, the job requires an individual of experience and maturity which can best be provided by a senior window clerk, Grade E5.

(2) Para 04, Line 02, assistant window clerk, E4. The team (GB) serves 1500 to 3000 personnel which necessitates an additional window clerk.

ARMY POSTAL OFFICE  
(UNIT TITLE)

META 12-550

MAJOR ITEM PURCHASING LIST

ARM LDR ITEM NO.	ITEM NOMENCLATURE (ARMY)	AUTHORIZATION																
		01	02	03	04	05	06	07	08	09	10	11	12	13	14	15	16	TOTAL
W45118	Tool Kit carpenter Brg 3M-4-51800- 304		1															1
L92963	Machine Gun 7.62 mm: light flexible		1	6														7
W97413	Pistol Automatic Cal .45	2	1	1	12													16
W951143	Rifle 7.62mm	1	19															20
W74002	Trailer cargo 1/2 ton 2 wheel W/E	1																1
W98112	Trailer cargo 1 1/2 ton 2 wheel		1															1
X387762	Truck cargo 3/4 ton 4x4 W/E w/ring mount				6													6
X608332	Truck 1/2 ton 4x4	1																1
X623402	Truck Van Shop 2 1/2 ton 6x6 w/ring mount		1															1
V312111	Telephone TA 312/ PT	1	1															2
J422742	Generator set gas eng 1.5 KW 60 cy 1 PH		1															1

DDAGA Form 27  
6 Dec 1965

ARMY POSTAL OFFICE  
(UNIT TITLE)

MTEL 12-550

MAJOR ITEMS EQUIPMENT LIST

EAM LINE ITEM NO.	ITEM NOMENCLATURE (ABBREV)	AUTHORIZATION																
		01	02	03	04	05	06	07	08	09	10	11	12	13	14	15	16	TOTAL
V491268	Tent small cotton duck olive drab FMWR compl w/pins & poles MIL-T-1109																	1
V517298	Tent liner cotton oxford FMWR natural for tent GP small MIL-T-1109																	1
P979158	Desk field ply- wood, 225/8 W 25 7/8 H, 14 1/2 D																	2
P999708	Desk, mail distri- bution wood OD, 64 1/2 H 47' W 10 1/2' D																	1
H423428	File Cabinet 1tr wtl olive 1 dr H, 1 dr W, 24-7/32 D																	2
S274058	Safe 2 shelves 1 dr W 2 compart- ments 26' H 17' W																	9
P934778	Table, folding legs wood, solid top, wood legs, 36L 24W 27-25/32																	2
X800748	Typewriter scriptbl 13" paper size, 22 to 44 keys elite type																	1

DDGAGA Form 27  
6 Dec 1965

MTEL 12-550

ARMY POSTAL OFFICE  
(UNIT TITLE)

MAJOR ITEMS EQUIPMENT LIST

EAM LINE ITEM NO.	ITEM NOMENCLATURE (ABBRV)	AUTHORIZATION																
		01	02	03	04	05	06	07	08	09	10	11	12	13	14	15	16	TOTAL
L639942	Light set gen illum 25 outlet		1															1
Z94247T	Typewriter, 12" carriage: ADPE	1																1

CDCAGA Form 27  
6 Dec 1965

## VEHICLE JUSTIFICATION

## ARMY POSTAL OFFICE

TYPE VEHICLE	QTY	MAINT EQUIV	TOTAL MAINT EQUIV	JUSTIFICATION
Postal Team AA (HQ)				
Truck $\frac{1}{4}$ ton w/trailer $\frac{1}{4}$ ton W/E	1	1.00 .20	1.00 .20	Required for command and control purposes. In as much as postal finance elements are often fragmented and located at points a considerable distance from the parent APO: organic transportation is required by the postal officer to properly supervise all component elements of his activity.
Team FG (Mail Processing Team)				
Truck Shop Van M109 with ring mount and w/trailer $1\frac{1}{2}$ ton	1	1.00 .40	1.00 .40	Army and US POD postal regulations specify that US mail will be transported in metal enclosed vans as a means of protecting the mail against damage or theft. Mail transported in vehicles other than vans are required to carry an armed guard in the bed of the vehicle. This is undesirable from a manpower point of view in as the guard must be provided from team resources.
Team GB, Postal Finance Team				
Truck $3/4$ ton with ring mount	6	1.00	6.00	Required for each team operating in areas remote from the parent APO to which they are assigned. A requirement exists for transportation to move mail accepted by these teams on a daily basis, and to accomplish their primary mission.

MTEL 12-550

GENERATOR AND LIGHT SET JUSTIFICATION

(Including Component Generators)

ITEM NO.	ITEM	MAINT EQUIV	PURPOSE	REMARKS
Par 02, FF Team (Mail Processing Team)				
J439182	Generator Set 1.5 KW 60 cy 1 PH 2 wire AC 120 V Skid	.13	Provide power source for lighting of postal facilities operated by these teams in absence of other lighting sources.	WABTOC
L639942	Light Set 25 outlet		Required for reasons same as indicated above.	WABTOC

CDCAGA Form 27-3  
6 Dec 1965

A-V-15

FORM 12-550

MISCELLANEOUS MAJOR AND MISSION  
EQUIPMENT JUSTIFICATION

(Includes items not justified elsewhere or are not authorized per  
criteria in AR 310-34)

ITEM NO.	ITEM	PURPOSE	REMARKS
V491268	Tent small cotton duck olive drab FMWR w/pins & poles Mil-T-1109	Provides sheltered office space for various administrative and mail processing activities of the Hq and Mail Processing Team.	
V517298	Tent liner cotton oxford FMWR natural for tent GP small Mil-T-1109.	Required for component of tent small, with justification as above.	
F999703	Desk mail distribution wood OD 64 1/2 H 47 W 10 1/2 D.	Provides accessible means of mail processing and distribution control.	Provided on a basis of one per mail processing team to insure sufficient general mail distribution.
S274058	Safe field	Safeguarding of funds and registered mail. Safeguarding of large volumes of stamps, funds, blank money orders forms and items of FOD accountable equipment.	One per each window clerk with stamp stock and one per unit Hq and Mail Proc Team.
X800748	Typewriter nonptble 13" paper size 42 to 44 keys, elite type.	Provides capability for limited temporary administrative requirements and transactions.	AR 310-34
B495463	Bayonet Knife w/ scabbard for 7.62mm rifle.	Component part of 7.62mm rifle.	AR 310-34

DDAGA Form 27-4  
6 Dec 1965

A-V-16

MIL 12-550

MISCELLANEOUS MAJOR AND MISSION  
EQUIPMENT JUSTIFICATION

(Includes items not justified elsewhere or are not authorized per  
criteria in AR 310-34)

ITEM NO.	ITEM	PURPOSE	REMARKS
L923863	Machine Gun 7.62 millimeter light flexible.	As required by Army and POD regulations to safeguarding of mail, funds, registered mail, volumes of stamps, blank money orders. For each individual carrier (truck) assigned to Postal Finance Teams, for security of Team FO Mail Proc and general area security.	One per each Postal Finance team vehicle. One per mail proc Shop Van or work area and one for Hq area security.
M967413	Pistol Auto Cal .45	Safeguarding of funds and postal effects.	AR 310-34
R951143	Rifle 7.62mm	Provides accessible means of industrial security and protection of overall organizational equipment.	AR 310-34
Z94247T	Typewriter, 12" carriage: ADPE	Primary means of communications.	Typewriter Automatic electric similar to Type Data Terminal Dura Business Machines With paper tape punch and read and EAM Card read. Solid state circuitry, 24-Volt DC to 240 Volt AC opr. Complete with on-line electronic modem to voice telephone and radio circuits, w/case

DDAGA Form 27-4  
6 Dec 1965

PART I

TOE/MTL 12-550

REQUIREMENT FOR  
ORGANIC COMMUNICATIONS

UNIT AFO Hq PROPOSER USACDCSSG

Net Number and Designation: Other Net

Purpose: Command Control Liaison and Inter Unit Control.

Range: 50 KM Alternate Means: Messenger/Mail

Remarks: Operated by Team AA and 'G

STA NO.	USER	EQUIP / ANT		DST	REMARKS
		QTY	OPEN		
	Postal Officer	1	TA 312		
	Team FO (Mail Proc)	1	TA 312		

CDGAGA Form 27-5  
6 Dec 1965

A-V-18

**ANNEX A**  
**APPENDIX VI**  
**ARMY BAND**

SECTION I - GENERAL

1. Title. Army Band.
2. Organization. The band is not subdivided organizationally.
3. Mission. To provide music for appropriate military ceremonies and recreational activities, and to promote and maintain the morale and esprit de corps of troops.
4. Capabilities.
  - a. Provides music for:
    - (1) Military ceremonies and formations.
    - (2) Concerts.
    - (3) Dances.
    - (4) Miscellaneous activities such as stage shows.
  - b. Performs such duties as the exigencies of the service demand.
5. Assignment. To Personnel and Administration Battalion, FASCOM, and Area Support Group, ASCOM.
6. Basis of Allocation. One per Personnel and Administration Battalion, FASCOM, and one per Area Support Group, ASCOM.

TOE APPLICATION STATEMENT

TOE: 1?-107E

Date: 26 March 1963 ..

TITLE: Army Band

1. The above indicated TOE is applicable to Derivative Study PASA 65-5, Personnel Command and Adjutant General Operations, 1970, ACN 3132.

2. The above indicated TOE will require a routine revision for the following reasons: None.

3. Other studies to which this TOE is applicable are: Derivative Study CSSG (3-6-2, The Area Support Command, ACN 3122.

ANNEX A

APPENDIX VII

REPLACEMENT REGULATING DETACHMENT

- (1) The detachment shall be organized and equipped to perform the following functions:
- (2) The detachment shall be capable of performing the following functions:
- (3) The detachment shall be capable of performing the following functions:
- (4) The detachment shall be capable of performing the following functions:
- (5) The detachment shall be capable of performing the following functions:

## SECTION I - GENERAL

### 1. Tit's. Replacement Regulating Detachment.

2. Organization. The replacement regulating detachment is composed of cellular teams of TOE 12-560. It normally includes a detachment headquarters team, an operations team, a mess team and a variable number of control teams (Figure A-VII-1).

3. Mission. To provide command, control, and administration of individual and unit replacements and rotatees within the assigned geographical area of responsibility within the theater army replacement system which includes mess, encampment and accounting.

### 4. Capabilities.

a. Replacement regulating detachments are capable of providing command, control and administration (including mess, encampment, and limited supply) according to the following criteria:

(1) Each detachment has the capability of processing 0 - 400 replacements or rotatees per day depending on the number of teams assigned.

(2) Each replacement control team can process a combined total of 100 individual rotatees and replacements per day or a replacement unit of company size.

(3) Each replacement operations team supports up to 800 replacements.

(4) Each replacement mess team can provide mess and mess facilities for 0 - 400 replacements or rotatees per day.

(5) Each replacement headquarters team can control one operations team, two mess teams, and eight control teams.

(6) Processing and travel time for each replacement or rotatee within the theater army replacement system (from POE to unit of assignment) is based on an average of 48 hours.

d. The replacement regulating detachment is equipped to maintain continuous liaison with the Personnel and Administration Center and other elements within its geographical location to insure the continuous flow of personnel.

e. The replacement regulating detachment is dependent upon the unit to which assigned for motor maintenance support.

f. The replacement regulating detachment is not adaptable to a reduced strength organization.

g. These units are not adaptable to a Type B organization.

h. Individuals of this type organization can engage in effective coordinated defense of the unit's area or installation.

#### 5. Assignment.

a. Replacement Regulating Detachment - to Replacement Regulating Company, Personnel Command or Personnel Administration Battalion, FASCOM.

b. Detachment Headquarters Team, Operations Team, Control Team and Mess Team - to Replacement Regulating Detachment.

#### 6. Basis of Allocations.

a. Normally 1 detachment per 15,000 population served.

b. Detachment headquarters team - one per 0 - 800 replacement or rotatees.

c. Operations team - one per 0 - 800 replacements or rotatees.

d. Control team - one per each 100 replacements or rotatees.

e. Mess team - one per 0 - 400 replacements or rotatees.

REPLACEMENT REGULATING DETACHMENT

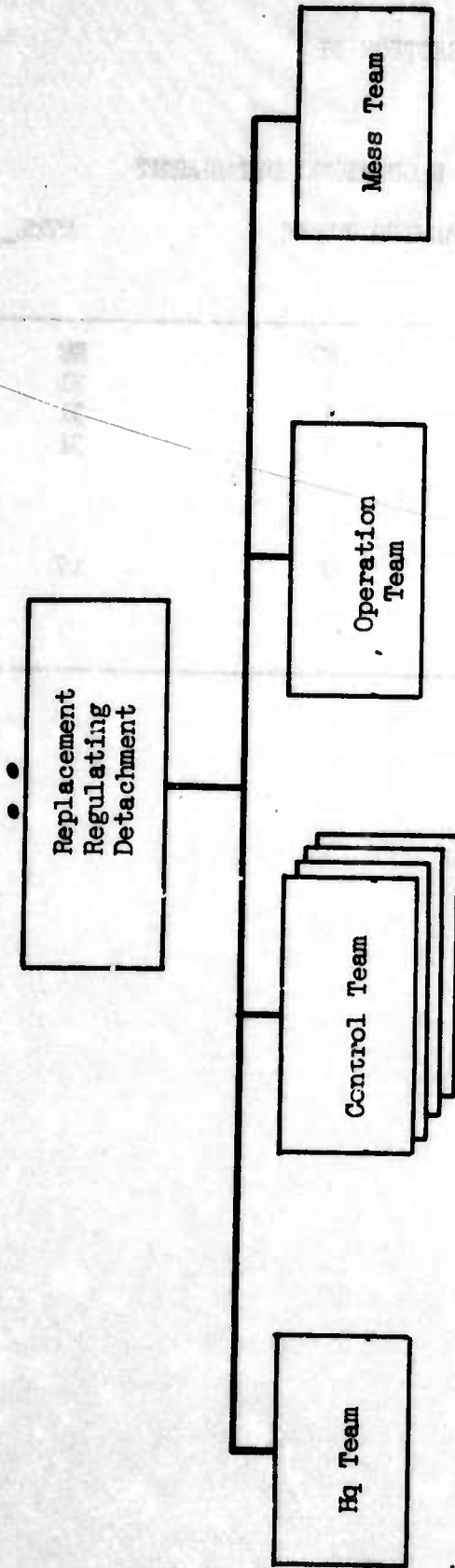


FIGURE A-VII-1

SECTION II

REPLACEMENT REGULATING DETACHMENT

MANNING TABLE

MTEL 12-560

	OFF	WO	FM	AGG
S L-1	5	0	31	36
T E-2	5	0	31	36
R V-3	5	0	31	36
E L				
CADRE	1	0	17	18
Type B				

Detachment Headquarters Team  
Replacement Regulating Detachment

MTEL 12-560

MANNING TABLE

	OFF	WO	EM	AOB
S L-1	1	0	5	6
T E-2	1	0	5	6
R V-3	1	0	5	6
E				
L				
CADRE	1	0	4	5
TYPE B				

Line	Duty Position	Br	MOS	Grade	STR LEVEL			TYPE B	CADRE	FOKS
					1	2	3			
01	Det Comdr	AG	2136	Capt	1	1	1	1	11/27	
02	First SGT	NC	71H50	E-8	1	1	1	1		
03	Supply SGT	NC	76K40	E-6	1	1	1	1		
04	Det Clerk		71H20	E-4	1	1	1	1		
05	Armorer		76K30	E-4	1	1	1	1	01	
06	Supply Clerk		76A10	E-3	1	1	1	0	01	

Remarks:

All personnel armed with rifle 7.62 millimeter unless otherwise indicated.

11 - Armed with pistol caliber .45

27 - Also Commanding Officer

01 - Also light truck driver

Control Team  
 Replacement Regulating Detachment

FORM 12-560

**MANPOWER TABLE**

	OFF	WO	EM	AGG
S L-1	1	0	2	3
T E-2	1	0	2	3
R V-3	1	0	2	3
E				
L				
CADRE	0	0	1	1
TYPE B				

Line	Duty Position	Br	MOS	Grade	SER LEVEL			TYPE B	CADRE	FMS
					1	2	3			
01	Team Ldr	AG	2136	Lt	1	1	1	0		
02	Team SGT	NC	11B40	E-7	1	1	1	1		
03	Asst Team SGT	NC	11B40	E-6	1	1	1	0	01	

Remarks:

01 - Also light truck driver.

Operations Team  
Replacement Regulating Detachment

MTEL 12-560

**MANNING TABLE**

	OFF	WO	EM	ACG
S L-1	0	0	5	6
T E-2	0	0	6	6
R V-3	0	0	6	6
E				
L				
CADRE	0	0	3	3
TYPE B				

Line	Duty Position	Br	MOS	Grade	STR LEVEL			TYPE B	CADRE	MARKS
					1	2	3			
01	Operations SGT	NC	71L50	E-8	1	1	1	0	1	
02	OP Repl Sp		71H20	E-5	3	3	3	0	1	
03	Clerk Typist		71B30	E-4	2	2	2	0	1	01

Remarks:

01 - Also light truck driver.

Mess Team  
Replacement Regulating Detachment

MTEL 12-560

MANNING TABLE

	OFF	WO	EM	ACC
S L-1	0	0	12	12
T E-2	0	0	12	12
R V-3	0	0	12	12
E				
L				
CADRE	0	0	5	5
TYPE B				

Line	Duty Position	Br	MOS	Grade	STR LEVEL			TYPE B	CADRE	RMCS
					1	2	3			
01	Mess Steward	NC	94B40	E-7	1	1	1	1		
02	Asst Mess Steward	NC	94B40	E-6	1	1	1	0		
03	First Cook		94B20	E-5	4	4	4	2		
04	Cook		94B20	E-4	4	4	4	2		
05	Cook Helper		94A10	E-3	2	2	2	0	01	

Remarks:

05 - Also light truck driver.

## PERSONNEL JUSTIFICATION

### Personnel Justification.

#### a. Headquarters Replacement Regulating Detachment.

- (1) Line 01 - Det Commander, 2136, AG, Captain. Authorized by paragraph 6a(b) and (d), AR 310-32.
- (2) Line 02 - First Sergeant, 71H50, NC, E-8. Authorized by paragraph 8c(4)(a), AR 310-32.
- (3) Line 03 - Supply Sergeant, 76K40, NC, E-6. Authorized by paragraph 9c(23)(9b), AR 310-32.
- (4) Line 04 - Det Clerk, 71H20, E-4. Authorized by paragraph 8c(10)(b)(2), AR 310-32.
- (5) Line 05 - Supply Clerk, 76K20, E-3. Required to assist in the maintenance, distribution, storage and issue of items of supplies and equipment. Paragraph 8c(23)(a), AR 310-32.
- (6) Line 06 - Armorer, 76K30, E-4. Maintains and repairs unit weapons and those of intransit replacement personnel.

#### b. Control Team.

- (1) Team Leader, 2136, AG, Lt. Authorized by paragraph 6a(1)(d)(e), AR 310-32.
- (2) Team Sergeant, 11B40, NC, E-7. Principal enlisted assistant to the Control Team Leader; assists in the control and supervision of replacements.
- (3) Assistant Team Sergeant, 11B40, NC, E-6. Assists the section sergeant in supervising and controlling replacements.

c. Operations Team.

(1) Line 01 - Operations Sergeant, 71L50, NC, E-8. Principal enlisted assistant to the Replacement Det Commander in matters involving movement of replacements. Supervises the activities and establishes operating procedures of the section. Coordinates the reassignment or reclassification of return-to-duty personnel in accordance with Personnel Administration Center (PAC) instructions. Also provides coordination between the Replacement Det and the unit of ultimate assignment.

(2) Line 02 - Operations Replacement Specialist, 71H20, E-5. Assists the Operations Sergeant in accomplishing the movement of replacement personnel. Assists in the coordinating activities and in functions involving the movement, reassignment, and reclassification of return-to-duty personnel.

Maintains liaison with medical and confinement facilities and the Personnel Service Companies and the Personnel and Administration Center (PAC) relative to the disposition of personnel requiring reclassification and/or evacuation to CONUS. Is capable of assisting in the reporting of casualties for appropriate disposition of personnel action requirements. Maintains constant liaison with area medical and confinement facilities.

(3) Line 03 - Clerk Typist, 71B30, E-4. Authorized by paragraph 8c(8), AR 310-32.

d. Mess Team - operational on a 24-hour basis.

(1) Line 01 - Mess Steward, 94B40, NC, E-7. Authorized by paragraph 8c(18)(b), AR 310-32.

(2) Line 02 - Assistant Mess Steward, 94B40, NC, E-6. Authorized by paragraph 8c(18)(c), AR 310-32.

(3) Line 03 - First Cook, 94B20, E-5. Authorized by paragraph 8c(18)(d), AR 310-32.

(4) Line 04 - Cook, 94B20, E-4. Authorized by paragraph 8c(18)(d), AR 310-32.

(5) Line 05 - Cooks Helper, 94A10, E-3. Authorized by paragraph 9c(18)(f), AR 310-32.

REPLACEMENT REGULATING DETACHMENT  
(UNIT TITLE)

MTEL 12-560

MAJOR ITEMS EQUIPMENT LIST

EAM LINE ITEM NO.	ITEM NOMENCLATURE (ABBRV)	AUTHORIZATION																
		Fig 01	Control 02	OP 03	Less 04	05	06	07	08	09	10	11	12	13	14	15	16	TOTAL
X65258-8	Trunk locker ply-wood 31"L, 15-1/8" W, 11-7/8"D w/tray	2	1	1	1													
N72891-8	Paulin ctn duck FMWWR OD, 40 ft length, 20 ft wide	0	0	0	0													
R75709-8	Repair kit tentage	1	0	0	0													
S58674-8	Screen latrine FMWWR OD 55 ft lg 8 pins 10 poles	2	0	0	0													
V48989-8	Tent gen purpose med w/o FMWWR complete w/pins and poles	2	0	0	0													
V49126-8	Tent gen purpose small ctn duck FMWWR OD w/pins and poles	0	1	0	0													
V49811-8	Tent kitchen fly proof M1948 FMWWR OD w/cover screen lines Mil-T-10009	0	0	0	1													
V51729-8	Tent liner ctn OX FMWWR nat for small	0	1	0	0													
V52003-8	Tent liner ctn pemeable tent gen purpose med	2	0	0	0													

GDCAGA Form 27  
6 Dec 1965

REPLACEMENT REGULATING DETACHMENT  
(UNIT TITLE)

MTEL 12-560

MAJOR ITEMS EQUIPMENT LIST

EAM LINE ITEM NO.	ITEM NOMENCLATURE (ABBREV)	AUTHORIZATION																
		01	02	03	04	05	06	07	08	09	10	11	12	13	14	15	16	TOTAL
Y01450-8	Vestibule tent f/ tent gen purpose stl olive drab	0	1	0	0													
D64865-8	Case field off mach plywood 18 1/2" L, 34 1/2"W, 17"D	0	1	0	1													
D65002-8	Case fld off mach plywood 22 1/2 L, 13 1/2 W, 17 1/2 D	0	1	0	1													
F97915-8	Desk fld plywood 22-5/8"W, 25-7/8" 17 1/2"D	2	1	4	1													
H4234-2	Filing cab ltr stl olive 1 dr HL	1	1	1	1													
S27405-8	Safe 2 shelves 1 dr 2 compartments 26" H, 17"W, 17 1/2"D	1	0	0	0													
X80259-8	Typewriter pthl upper & lower case elite style 42 keys	0	1	0	1													
V93888-8	Table folding leg wood top & leg 36" L, 24W, 27-25/37"H	4	1	2	1													
A03210-8	Accessory outfit gas olive fld range 33 components	0	0	0	2													

REPLACEMENT REGULATING DETACHMENT  
(UNIT TITLE)

MTEL 12-560

MAJOR ITEMS EQUIPMENT LIST

EAM LDC ITEM NO.	ITEM NOMENCLATURE (ABBRV)	AUTHORIZATION																
		Fig 24				Control												TOTAL
		01	02	03	04	05	06	07	08	09	10	11	12	13	14	15	16	
H83817-8	Food container in- sulated rectangu- lar 3 gal cap	0	0	0	6													
KL4154-8	Range outfit gaso- line	0	0	0	6													
V05712-8	Tableware outfit fld 14 components	0	0	0	1													
W31634-8	Tool kit armorers 42 components	1	0	0	0													
X80074-8	Typewriter nonptbl 13" paper size 42 to 44 keys elite type	0	1	0	1													
L92386-3	Machine Gun 7.62 millimeter	5	0	0	0													
M75714-3	Mount tripod Mach Gun 7.62 millimeter	5	0	0	0													
W96741-3	Pistol caliber 45	0	0	0	0													
R95114-3	Rifle 7.62 milli- meter	6	3	6	12													
W95400-2	Trailer amphibious cargo 1/2 ton 2wh	1	0	0	0													
W95537-2	Trailer cargo 3/4 ton 2 wheel	0	1	0	0													
W98825-2	Trailer tank water 1 1/2 ton 2 wheel	0	0	0														

MTEL 12-560

REPLACEMENT REGULATING DETACHMENT  
(UNIT TITLE)

MAJOR ITEMS EQUIPMENT LIST

EAM LINE ITEM NO.	ITEM NOMENCLATURE (ABBRV)	AUTHORIZATION																					
		Hqs Tm	Control Tm	Op Tm	Mess Tm	01	02	03	04	05	06	07	08	09	10	11	12	13	14	15	16	TOTAL	
X39735-2	Truck cargo 3/4ton	0	1	0	0																		
X40009-2	Truck cargo 2½ ton 6 x 6 LWB	1	0	0	1																		
X60533-2	Truck utility ¼ ton 4 x 4	1	0	0	0																		
P84872-1	Public Address set AN/UIH-4	1	0	0	0																		
V31211-1	Telephone TA312/PT	1	1	1	0																		
K25342-2	Heater Immersion liq fuel fired 30" leg of heater	0	0	0	2																		
K25479-2	Heater Immer 27¼"	0	0	0	2																		
J43918-2	Gen gas eng 1.5KW 60 cy 1 PH 5 wire 120 V skid	0	0	0	0																		
J48713-2	Gen Set Gas Eng 5 KW 60 CY 1 PH 3 wire AC 120V skid	1	0	0	0																		
C37737-2	Burner Assy Space Heater	4	1	0	0																		
K25890-2	Heater space coal or oil 45000 BTU	4	1	0	0																		
L63994-2	Light set gen I'll- um 25 outlets	3	0	0	0																		

GDCAGA Form 27  
6 Dec 1965

MTEL 12-560

REPLACEMENT REGULATING DETACHMENT  
(UNIT TITLE)

MAJOR ITEMS EQUIPMENT LIST

EAM LINE ITEM NO.	ITEM NOMENCLATURE (ABBRV)	AUTHORIZATION																					
		Tm																TOTAL					
		Hqs	Control	Op	Mess	01	02	03	04	05	06	07	08	09	10	11	12		13	14	15	16	
FSN-00S-49865	Auto-Typewriter w/paper punch and reader w/case	1	0	1	0																		
E005331	Charger radiac detector PP-1578/PD	2	0	0	0																		
Q209351	Radiacmeter IM-93/UD	2	0	0	0																		
Q212091	Radiacmeter IM 174/PD	1	0	0	0																		
6044375	Detector Kit Chemical Agency VGH M15A1A	1	0	0	0																		
F814695	Decontaminating apparatus ptbl 1½ quart ABC M1	2	4	0	1																		

CDGAGA Form 27  
6 Dec 1965

REPLACEMENT REGULATING DETACHMENT

MTEL 12-560

MISCELLANEOUS MAJOR AND MISSION  
EQUIPMENT JUSTIFICATION

(Includes items not justified elsewhere or are not authorized per  
criteria in AR 310-34)

ITEM NO.	ITEM	PURPOSE	REMARKS
S58674-8	Screen latrine FMWR OD 55 ft lgh 8 pins and 8 poles.	Required as a necessity for sanitation, health and comfort of troops.	
V49126-8	Tent sml ctn duck OD FMWR w/pins & poles M11-T-1109	Provides sheltered office space for various control team functions.	
V49811-8	Tent kitchen fly proof M1948 FMWR OD w/cover screen liner M11-T-10009.	Provides sheltered space cooking and messing facility.	
V51729-8	Tent liner ctn OX FMWR nt	Component of Tent gen purpose small.	Standard remark 622.
V52003-8	Tent liner ctn pre- meable for tent gen purpose medium.	Component of ten gen purpose medium.	Standard remark 621.
Y01452-8	Vestibule Tent f/ tent gen purpose sml olive drab.	Component of Tent gen purpose small.	Standard remark 622.
V48989-8	Tent gen purpose med w/o FMWR compl w/pins and poles.	Provides sheltered office space for Admin & Sup and various other functions of operational activities	Based on remarks and diagrams in AR 600-16.
S27405-8	Safe 2 shelves 1 dr 2 compartments 26"H 17"W, 17½"D.	Provides a measure of security for official & classified matter.	
X80074-8	Typewriter nonptbl 13" size 42 to 44 key elite type	Provides capability for limited temporary admini- strative requirements and transactions.	

CDCAGA Form 27-4  
6 Dec 1965

A-VII-17

REPLACEMENT REGULATING DETACHMENT

MTR 12-560

MISCELLANEOUS MAJOR AND MISSION  
EQUIPMENT JUSTIFICATION

(Includes items not justified elsewhere or are not authorized per  
criteria in AR 310-34)

ITEM NO.	ITEM	PURPOSE	REMARKS
05X80759-8	Typewriter ptbl upper & lower case elite type 42 keys	Provides capability for limited administrative functions.	
L92386-3	Machine gun 7.62 millimeter	Provides minimum security for team location.	
M75714-3	Mount tripod mach gun 7.62 milli- meter	Component of Machine Gun 7.62 millimeter.	
P84872-1	Public Address set AN/UIH-4	Primary means of voicing instruction and informa- tion over large troop area compound.	
Z94247T	Typewriter 12 in. carriage: ADPE		Typewriter Automatic electric similar to Type Data Terminal Dura Business Machines. With paper tape punch and read and EAM Card read. Solid state circuitry, 24-Volt DC to 240-Volt AC opr. Complete with on-line electronic modem to voice telephone and radio circuits, w/case.

CDCAGA Form 27-4  
6 Dec 1965

A-VII-18

REPLACEMENT REGULATING DETACHMENT

MTEL 12-560

VEHICLE JUSTIFICATION

TYPE VEHICLE	QTY	MAINT EQUIV	TOTAL MAINT EQUIV	JUSTIFICATION
W95400-2 Trailer amphib- ious cargo $\frac{1}{4}$ ton 2 wheel	1	.10	.10	Required as component of truck utility $\frac{1}{4}$ ton.
W95537-2 Trailer cargo $\frac{3}{4}$ ton 2 wheel	4	.40	.40	Required as component of truck $\frac{3}{4}$ ton 4 x 4
W98825-2 Trailer tank water $1\frac{1}{2}$ ton 2 wheel	2	.40	.40	Required for water sanitation, and water supply storage.
X39735-2 Truck cargo $\frac{3}{4}$ ton 4 x 4	4	1.00	4.00	Provides administrative utilization requirements.
X40009-2 Truck cargo $2\frac{1}{2}$ ton 6 x 6 LWB	2	1.00	2.00	Provides for transport of supplies, equipments, troop and other administrative requirement including mess utilization.
X60533 Truck utility $\frac{1}{4}$ ton 2 wheel	1	1.00	1.00	Provides transportation requirements of Det Commander, and operational control over four subordinate elements, and other administrative operational requirements.

Replacement Regulating Detachment

MTEL 12-560

GENERATOR AND LIGHT SET JUSTIFICATION

(Including Component Generators)

ITEM NO.	ITEM	MAINT EQUIV	PURPOSE	REMARKS
J48713-2	Gen Set Gas Eng 5KW 60 CY 1 PH 4 wire AC 120V skid mtd	.16	Provides power for equipment and operational necessities to fulfill the organizational mission.	
I63994-2	Light Set Gen I'llum 25 outlets	-	Provides lights for lighting purpose (Sheltered office space, and other requirements necessitating light).	

CDCAGA Form 27-3  
6 Dec 1965

A-VII-20

PART I

TOE/MTEL 12-560

REQUIREMENT FOR  
ORGANIC COMMUNICATIONS

UNIT Replacement Regulating Detachment PROPONENT USACDCAGANet Number and Designation: Other NetsPurpose: Command, Control, LiaisonRange: 50 KM - 100 KM Alternate Means: Messenger/MailRemarks: Operated by Unit personnel.

STA NO.	USER	EQUIPMENT		INST	REMARKS
		QTY	NOMEN		
	Replacement Regulating Det Personnel	6	*TA312/PT		*Required for unit communication, replace- ment liaison coordination, and Det control require- ments.

CDCAGA Form 27-5  
6 Dec 1965

A-VII-21

**ANNEX A**

**APPENDIX VIII**

**SPECIAL SERVICE DETACHMENT**

## SECTION I - GENERAL

1. Title. Special Service Detachment.
2. Organization. The elements within the unit are identified in the MTEL. (See figure A-VIII-1).
3. Mission. To provide command and operating control of a maximum of four (4) rest areas, each area supporting a maximum of 750 personnel in units; and to assist, guide, and train unit personnel in self-help special services activities embracing motion picture showings, crafts programs, library services, sports, and recreation.
4. Capabilities.
  - a. Each Special Service Detachment of four (4) teams provides command and operating control of four (4) Unit Rest Areas with additional service support received from a Medical Team, Finance Disbursing Team, Mess Team, Postal Team, Chaplain Team, Engineer Team, Exchange Team, Supply Support Team, and Bath and Clothing Exchange Team.
  - b. Each Services Team provides command and operating control, and special services guidance, assistance, training, and support to units occupying a rest area with a maximum daily load

of 750 personnel.

c. Each Special Service Detachment of four (4) teams provides command and operating control to an 800-man leave and recreation center established within the Communications Zone. Functional support teams similar to those furnished a rest area must be attached or assigned to the leave and recreation center.

d. This unit is not adaptable to Type B organization.

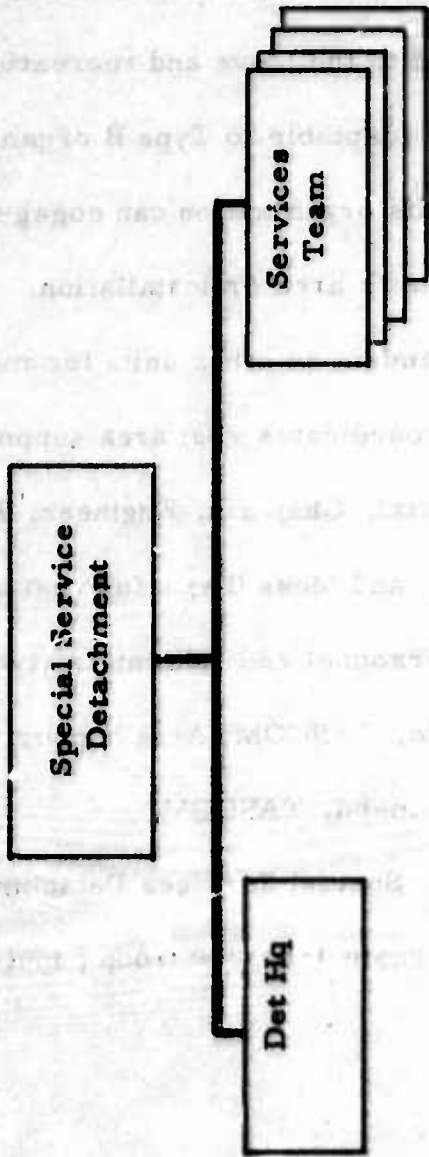
e. Individuals of this organization can engage in effective coordinated defense of the unit's area or installation.

f. The unit is dependent on other units for messing and logistical support. It also coordinates rest area support required from Finance, Medical, Postal, Chaplain, Engineer, Exchange, Bath and Clothing Exchange, and Mess Team for rest area operation.

5. Assignment. To Personnel and Administrative Battalion, Army/Corps Support Brigade, FASCOM; Area Support Group, ASCOM, and Personnel Command, TASCOM.

6. Basis of Allocation. Special Services Detachment 1:60,000 troop population. Services Team 1:15,000 troop population.

**SPECIAL SERVICE DETACHMENT (MTEL 12-18)**



**Figure A-VIII-1**

SECTION II

SPECIAL SERVICE DETACHMENT

METL 12-18

MANNING TABLE

	OFF	WO	EM	AGG
SL - 1	5	0	35	40
TE - 2	5	0	35	40
RV - 3	5	0	35	40
E				
L				
CADRE	5	0	23	28
TYPE B	0	0	0	0

SPECIAL SERVICES DETACHMENT

MTEL 12-18

Para 1 (Hq's)

MANNING TABLE

	OFF	WO	EM	AGG
S L-1	1	0	7	8
T E-2	1	0	7	8
R V-3	1	0	7	8
E				
L				
CADRE	1	0	7	8
TYPE B	0	0	0	0

Line	Duty Position	Br	MOS	Grade	STR LEVEL			TYPE B	CADRE	RMS
					1	2	3			
01	Comd Officer	AG	5000	Capt	1	1	1	0	1	
02	First Sgt	NC	03B50	E-8	1	1	1	0	1	
03	Supply Sgt	NC	76K40	E-6	1	1	1	0	1	
04	Film Supply and Projectionst		03B20	E-4	2	2	2	0	2	
05	Electronic Rp Sp		26T20	E-4	1	1	1	0	1	
06	Wheel Veh Mech		63B20	E-4	1	1	1	0	1	01
07	Clerk Typist		71B20	E-4	1	1	1	0	1	01

Remarks

01 - Also light truck driver.

SPECIAL SERVICES DETACHMENT

MTEL 12-18

Para 2 (Svc Team)

MANNING TABLE

	OFF	WO	EM	AGG
S L-1	1	0	7	8
T E-2	1	0	7	8
R V-3	1	0	7	8
E L				
CADRE	1	0	4	5
TYPE B	0	0	0	0

Line	Duty Position	Br	MOS	Grade	STR LEVEL			TYPE B	CADRE	RMKS
					1	2	3			
01	Team Chief	AG	5000	Lt	1	1	1	0	1	
02	Recreation Supv	NC	03B40	E-7	1	1	1	0	1	
03	Entertainment Supv	NC	03B40	E-6	1	1	1	0	1	
04	Physical Act Supv	NC	03B40	E-6	1	1	1	0	1	
05	Entertainment Sp		03B20	E-5	1	1	1	0	0	
06	Physical Act Sp		03C20	E-5	1	1	1	0	0	
07	Arts & Craft Sp		03D20	E-5	1	1	1	0	1	
08	Recreation Sp		03B20	E-4	1	1	1	0	0	01

Remarks

01 - Also light truck driver

## PERSONNEL JUSTIFICATION

### 7. Personnel Justification.

a. Five officers and 35 enlisted personnel are the minimum required to adequately provide command, control, and special services support for four rest areas each supporting 750 combat or combat support troops under the control of their unit commanders.

b. The headquarters element is responsible for all supply functions for each Service Team operating a rest area, as well as providing assistance and support to supported units for special services supply. The headquarters element provides command and control to Services Teams and rest areas.

c. Each Services Team operating a rest area receives support for rest area services from functionally oriented teams, such as a medical team for dispensary services, a mess team for meals, and others.

d. Detailed justification by line number on the manning table is as follows:

(1) Para 1 - Detachment Headquarters.

(a) Line 01 - Commanding Officer, AG, 5000, Capt. Commands and controls the special service detachment consisting of a detachment headquarters and four (4) Services Teams, each team

operating a rest area.

(b) Line 02 - First Sergeant, NC, 03B50, E-8.

Principal enlisted supervisor for all unit personnel. Supervises unit-wide functions as pertain to enlisted personnel, and assists in controlling personnel occupying rest areas by coordinating with designated unit supervisors.

(c) Line 03 - Supply Sergeant, NC, 76K40, E-6.

Supervises and performs all supply functions required by the Services Teams operating rest areas and coordinates and assists supported units within the geographic area of support in matters pertaining to special services supply items.

(d) Line 04 - Film Supply and Projectionist Specialist, 03B20, E-4. Procures and schedules all motion picture material used in the Special Service Detachment rest area; operates and trains other personnel to operate projection equipment and maintains quality film showings; repairs film as required and arranges for film distribution. Two projectionists are required; each projectionist will provide services to the rest areas as required.

(e) Line 05 - Electronic Repair Specialist, 26T20, E-4. Provides 1st, 2d, and limited 3rd echelon maintenance support

for electronic equipment organic to the unit, and services equipment belonging to combat and combat support units occupying the rest area for short periods of time.

(f) Line 06 - Wheel Vehicle Mechanic, 63B20, E-4.

Authorized by paragraph 8c(20) (d) (1), AR 310-32.

(g) Line 07 - Clerk Typist, 71B20, E-4. Authorized by paragraph 8c (8), AR 310-32.

(2) Para 02 - Services Teams.

(a) Line 01 - Team Chief, AG, 5000, Lt. Commands and controls a rest area and its internal operations. Responsible for and supervises all support required within the rest area. Is liaison officer between rest area operations and commanders of troop units. A commissioned officer is considered necessary for command and control; ranks of troop unit commanders will range from noncommissioned officers to colonel, 06.

(b) Line 02 - Recreation Supervisor, NC, 03B40, E-7. Principal enlisted assistance to the Team Leader. Assists the team leader in supervising the activities of the team; plans and coordinates all types of special service activities, including arts and crafts, libraries, clubmobiles, motion picture showing

facilities, sports, and other services.

(c) Line 03 - Entertainment Supervisor, 03B40,

E-6. Provides supervision and guidance to units who need advice in staging unit soldier shows and in music appreciation; render technical assistance to determine the types of entertainment best suited for troops in a rest area and which can be accomplished within unit resources; assists in recreational areas as appropriate. Responsible for scheduling, operating and training other special service or supported personnel to operate movie projection equipment. In performing these duties he is assisted by: Line 05 - Entertainment Specialist, E-5.

(d) Line 04 - Physical Activity Supervisor, 03C40,

E-6. Provides guidance and assists supported units in formulating and executing plans for sports activities; issues and accounts for a limited amount of athletic equipment available for issue to troop units occupying the rest area. In performing these duties he is assisted by: Line 11 - Physical Activity Specialist, E-5.

(e) Line 05 - Entertainment Specialist, 03B20,

E-5. Assists in providing supervision and guidance to units staging unit soldier shows and music appreciation activities; assists in

determining the types of entertainment best suited for troops in rest area and which can be accomplished within unit resources; assists in recreational areas as appropriate.

(f) Line 06 - Physical Activity Specialist, 03B20, E-5. Assist in providing guidance, and technical knowledge for supporting units in formulating and executing plans for sports activities; assists in the issue and accounting for limited amount of athletic equipment available for issue to troop units occupying the rest area.

(g) Line 07 - Arts and Crafts Specialist, 03D20, E-5. Provides guidance and assistance to supported unit individuals in making handicraft items in the arts and crafts area; issues expendable items to individuals and accounts for any non-expendable items loaned to individuals.

(h) Line 08 - Recreation Specialist, 03B20, E-4. Assists the Recreation Supervisor (line 04) in coordination of team activities, required administrative matters, to include arts and crafts, libraries, movies, and other services required.

MTEL 12-18

SPECIAL SERVICE DETACHMENT  
(UNIT TITLE)

MAJOR ITEMS EQUIPMENT LIST

EAM LINE ITEM NO.	ITEM NOMENCLATURE (ABBREV)	AUTHORIZATION														Rest Area			
		Rest Area		L&R Ctr		Svc Tm		Svc Tm		Svc Tm		Svc Tm		Rest Area	L&R Ctr				
		01	02	03	04	05	06	07	08	09	10	11	12			13	14	15	16
J71304-8	Goggles, sun wind dust, 2-plastic colorless, neutral gray	4	4	3	3	3	3											16	16
X65121-8	Trunk, locker, metal/wood, metal reinf, 31"L, 17"W, 13" D.	4	4	4	4	4	4											20	20
S58674-8	Screen, latrine, FMWWR, OD, 55 ft long, 8 pins 10 poles	1	1	2	2	2	2											9	9
V48989-8	Tent, general pur- pose, medium, with- out windows, FMWWR, complete w/pins & poles	3	1	2	2	2	2											11	9
V52003-8	Tent, liner, cotton, permeable tent, general purpose, medium	3	1	2	2	2	2											11	9
D63902-8	Case, field, office machine, plywood, 22 1/2"L 13 1/4" W, 17"D, ID	1	1	0	0	0	0											1	1

SPECIAL SERVICES DETACHMENT  
(UNIT TITLE)

MTEL 12-18

MAJOR ITEMS EQUIPMENT LIST

EAM LINE ITEM NO.	ITEM NOMENCLATURE (ABBREV)	AUTHORIZATION																Rest Area L&R Ctr	
		Rest Area L&R Ctr	Svc Tm	Svc Tm	Svc Tm	Svc Tm												TOTAL	L&R Ctr
F97915-8	Desk, field, plywood, 20-7/8" W, 1e-7/16"H, 15", OD	2	2	1	1	1	1											6	6
H42342-8	File cabinet, letter, steel, OD 1-dr H, 1-dr W, 24-7/32"D.	1	1	1	1	1	1											5	5
S27405-8	Safe, 2-shelves, 1-dr, 2 compart- ment 26"H, 17" W, 17 1/2"D.	1	1	1	1	1	1											5	5
V93888-8	Table, folding legs, wood, solid top, wood legs, 36"L, 24"W, 27-25/32"H.	1	1	4	4	4	4											17	17
X80074-8	Typewriter, non- pt, 13" paper size, 42 to 44 keys, elite type	1	1	0	0	0	0											1	1
P23888-8	Pot, melting, elec glue, style, dry type, 2-qt cap.	0	0	1	1	1	1											4	4

**SPECIAL SERVICE DETACHMENT**  
(UNIT TITLE)

MTEL 12-18

**MAJOR ITEMS EQUIPMENT LIST**

EAM LINE ITEM NO.	ITEM NOMENCLATURE (ABBRV)	Rest Area L&R Ctr				Svc Tm				AUTHORIZATION																Rest Area L&R Ctr	
		01	02	03	04	05	06	07	08	09	10	11	12	13	14	15	16	TOTAL									
R95114-3	Rifle, 7.62mm, semi-automatic, light barrel	8	8	8	8	8	8												40	40							
W95400-2	Trailer, amphib- ious cargo, 1/4- ton, 2-wheel	1	1	1	1	1	1												5	5							
W95811-2	Trailer, cargo 1 1/4-ton, 2- wheel	2	1	2	2	2	2												10	9							
X40146-2	Truck, cargo, 2 1/2-ton, 6x6, LWB, w/winch	2	1	1	1	1	1												6	5							
X60833-2	Truck, utility, 1/4-ton, 4x4	1	1	1	1	1	1												5	5							
X62340-2	Truck, Van, Shop, 2 1/2-Ton, 6x6	0	0	2	2	2	2												8	8							
E00533-1	Charger, radiac, dector, PP-1578/ PO	1	1	1	1	1	1												5	5							
R48721-1	Recorder-Re- producer, sound, RD-128/UN	0	0	1	1	1	1												4	4							
V31211-1	Telephone set, TA/312-PT	1	1	1	1	1	1												5	5							

SPECIAL SERVICE DETACHMENT  
(UNIT TITLE)

MAJOR ITEMS EQUIPMENT LIST

EAK LINE ITEM NO.	ITEM NOMENCLATURE (ABBRV)	AUTHORIZATION																Rest Area L&R Ctr	Rest Area L&R Ctr
		Rest Area L&R Ctr	Svc Tm	Svc Tm	Svc Tm	Svc Tm	Svc Tm	Svc Tm	Svc Tm	Svc Tm	Svc Tm	Svc Tm	Svc Tm	Svc Tm	Svc Tm	Svc Tm	Svc Tm		
D82099-2	Chain assembly, single leg, w/pear links and 1 grab hook, 5/8"x 16 ft	1	1	1	1	1	1											5	5
J48028-2	Generator Set, gas engine, 5KW, 60 CY 1 & 3 PH, 4-wire re-connectable to 2-wire and 3-wire AC, 120; 120/240, 120/208 volts, air cooled, skid mtd	2	1	2	2	2	2											10	9
B15688-2	Bag, water, sterilizing, cotton duck, porous, stitched seams, 36-gallon	1	1	2	2	2	2											9	9
C37737-2	Burner assembly, space heater	3	1	4	4	4	4											19	17
G21061-2	Dispensing pump, hand driven, continuous flow, 12 gals per 100 rev.	1	1	1	1	1	1											5	5
H73666-2	Flashlight, plastic right angle, 2-cell, miniature flange lamp, water tight	4	4	3	3	3	3											16	16

**SPECIAL SERVICE DETACHMENT**  
(UNIT TITLE)

MTEL 12-18

**MAJOR ITEMS EQUIPMENT LIST**

EAM LINE ITEM NO.	ITEM NOMENCLATURE (ABBRV)	Rest Area	AUTHORIZATION														Rest Area	LUR Ctr	
		L&R Ctr	Svc Tm	Svc Tm	Svc Tm	Svc Tm												LUR Ctr	
		01	02	03	04	05	06	07	08	09	10	11	12	13	14	15	16	TOTAL	
K25890-2	Heater, space, coal or oil, 4500 BTU, 18-5/8" high	3	1	4	4	4	4											19	17
L63994-2	Light set, general illumination, 25 outlet	2	1	2	2	2	2											10	9
P61254-2	Printing and publishing kit	0	0	1	1	1	1											4	4
U11152-2	Sprayer, insect, ahnd, 2-gal cap.	1	1	1	1	1	1											5	5
Y33342-3	Watch, wrist, grade II	4	4	2	2	2	2											12	12
P763031	Projection Set, Motion Picture, silent and sound, 115 V AC	2	2	2	2	2	2											10	10
Z94247T	Typewriter, 12" carriage: ADPE	1	1	1	1	1	1											5	5
P843241	Public Address Set general purpose, AN/TIQ-2	0	0	1	1	1	1											4	4

**SPECIAL SERVICE DETACHMENT**  
(UNIT TITLE)

MTEL 12-18

**MAJOR ITEMS EQUIPMENT LIST**

EAM LINE ITEM NO.	ITEM NOMENCLATURE (ABBRV)	AUTHORIZATION														Rest Areas L&R Ctr			
		Rest Area L&R Ctr		Svc Tm	Svc Tm	Svc Tm	Svc Tm											Rest Areas	L&R Ctr
		01	02	03	04	05	06	07	08	09	10	11	12	13	14	15	16	TOTAL	
Un- known	Receiver, radio, transistorized, broadcast band & short wave band, battery powered & 110 volt, with audio plugs compatible with Public Address Set, general purpose, AN/TIQ-2	2	0	1	1	1	1											6	4
Un- known	Kit, athletic and recreation, experimental type for Vietnam, consisting of the following components: 12 ea Softball, rubber, size 12" (Wilson #A9332 or equal) 12 ea Bat, softball, 6 size 33" and 6 size 34" (Wilson #A9502 or equal) 7 ea Glove, softball, leather five finger right hand thrower (Wilson #A9811 or equal) 2 ea Glove, softball, leather, five finger left hand thrower, (Wilson #A9813 or equal) 1 ea Set, Horseshoes (4-shoes 2 stakes and rules (Wilson #E6904 or equal) 1 ea Guage, Air (Wilson #E8140 or equal) 1 ea Inflator, hand type (Wilson #E8168 or equal) 1 ea Mask, Catchers, softball (Wilson #A9906 or equal) 1 ea Mitt, Catchers, softball (Wilson #A9866 or equal) 1 ea Net, Volleyball (Wilson #E5512 or equal) 2 ea Football, Rubber, (Wilson #B1550 or equal)	0	0	2	2	2	2											8	8

CDCAGA Form 27  
6 Dec 1965

A-VIII-16

SPECIAL SERVICE DETACHMENT  
(UNIT TITLE)

MTEL 12-18

MAJOR ITEMS EQUIPMENT LIST

EAM LINE ITEM NO.	ITEM NOMENCLATURE (ABBRV)	AUTHORIZATION														Rest Area	L&R Ctr	
		Rest Area	L&R Ctr	Svc Tm	Svc Tm	Svc Tm	Svc Tm	Svc Tm	Svc Tm	Svc Tm	Svc Tm	Svc Tm	Svc Tm	Svc Tm	Svc Tm			
		01	02	03	04	05	06	07	08	09	10	11	12	13	14			15
	2 ea Volleyball, leather (Wilson #5010 or equal)																	
	1 ea Soccerball, leather (Wilson #H6120 or equal)																	
	1 ea Set, Badminton (4-rackets, posts, net, shuttlecocks and rule book (Wilson #T8870 or equal)																	
	12 ea Shuttlecocks, outdoor type (Wilson #T8926 or equal)																	
	6 dozen cards, playing, regular (Arred Streamline or equal)																	
	1 dozen cards, Pirochle Arreo Streamline or equal)																	
	9 ea Boards, checker, folding, without chess and checkers (J & R Weiss or equal)																	
	6 sets Checkers, without board, 30 per set, Balsam Nr. 518/80 (Langsam's Co or equal)																	
	3 sets Chessmen, without boards, Staunton Nr. A-2 (WC Horn or equal)																	
	6 sets Dominoes, double 6 set, Salsam Nr. 622 (Langsam's Co or equal)																	
	6 ea Boards, Cribbage, with pegs, hardwood or plastic, 120 run																	
	2 ea Set, Dartboard, reversible, with wire dividers, 18" diameter, (Haecker Nr. BP6, Pan Pacific Co or equal)																	
Un-known	Kit, Arts and Crafts, consisting of the following components, (Experimental type)	0	0	2	2	2	2											8
	24 ea Knife, pocket, 3", 2-blade																	
	6 ea Stone, sharpening, small																	
	12 ea Kit, tools, small crafts work																	
	100 ea Strips, leather, 4" x 12", 1/16" thickness (for making wallets and cigarette holders)																	
	50 ea Pocket Chip, carving, 1" x 3", complete with razor blade, for carving.																	
	25 ea Knots, leather braiding (for wallets and other leather work)																	

SPECIAL SERVICE DETACHMENT  
(UNIT TITLE)

MTEL 12-18

MAJOR ITEMS EQUIPMENT LIST

EAM LINE ITEM NO.	ITEM NOMENCLATURE (ABBRV)	AUTHORIZATION																
		01	02	03	04	05	06	07	08	09	10	11	12	13	14	15	16	TOTAL
	10 lbs Assorted Plastics materials with 50 tubes of plastic glue 144 sheets, Emery Cloth, for stone polishing 1 lb Wire, silver alloy craft design type 6 ea Plier, pointed, craft design type 6 ea File, metal filing 5" length 25 ea Needle, leather sewing, 3 1/2"																	

SPECIAL SERVICE DETACHMENT

MTEL 12-18

VEHICLE JUSTIFICATION

TYPE VEHICLE	QTY	MAINT EQUIV	TOTAL MAINT EQUIV	JUSTIFICATION
W95400-2 Trailer, amphibious, cargo, 1/4-ton-2-wheel	5	.2	1.00	To transport unit headquarters and Services Teams (rest area) equipment.
W95811-2 Trailer, cargo, 1 1/4-ton, 2-wheel	10			To transport Generator Sets, Lighting Equipment Sets, recreation and sports kits, and arts and crafts kits, for unit headquarters.
X40146-2 Truck, cargo, 2 1/2-ton, 6 x 6, LWB, w/ winch	6	.1	.6	To transport teams field equipment, expendable supplies, and rations for rest area.
X60833-2 Truck, utility 1/4-ton 4 x 4	5	.1	.5	Command and administration; liaison and guard duties for rest areas; supply control with rest area units.
X62340-2 Truck, Van, Shop, 2 1/2-Ton, 6 x 6	8	.1	.8	One Van for Recreation and Entertainment sections of team one for Arts and Crafts section of team; both for services to units occupying rest areas (Each Services Team has two x 4 teams)

SPECIAL SERVICE DETACHMENT

MTEL 12-18

GENERATOR AND LIGHT SET JUSTIFICATION

(Including Component Generators)

ITEM NO.	ITEM	MAINT EQUIV	PURPOSE	REMARKS
J48028-2	Generator Set, gas engine, 5-KW, 60 cy, 1 & 3 PH, 4-wire AC 120, 120/240, 120/208 volts, air cooled skid mounted	.16	1 Set required for Entertainment, arts & crafts, and recreational use in rest areas; 1 Set required for motion picture projection equipment installed at various points within each rest area. 1 set required for electric typewriter and for electric lighting equipment.	Wattage and voltage is tentative; specific generator will be provided at such time as field wattage requirements of proposed equipment is determined.
L63994-2	Light Set, general illumination, 25 outlets.		To furnish lighting for supply and unit headquarters. One set is required for lights in services area of rest area and 1 set is required for plugging attachments located at various points in the rest area.	Adequate light is required for craft and Services Teams areas and for motion picture tent.

SPECIAL SERVICE DETACHMENT

MTEL 12-18

MISCELLANEOUS MAJOR AND MISSION  
EQUIPMENT JUSTIFICATION

(Includes items not justified elsewhere or are not authorized per  
criteria in AR 310-34)

ITEM NO.	ITEM	PURPOSE	REMARKS
<p><u>NOTE:</u> All items used by the Special Services Unit and organic Services Teams have been previously justified by TOE 12-18E, except the following:</p>			
<p>Z 94247T</p>	<p>Typewriter, 12 inch carriage: ADPE</p>	<p>To receive situation reports from rest areas; to receive notices of impending arrival from combat and combat support units utilizing rest areas and to dispatch notices of departure from rest area to parent units; to arrange movements control of units occupying rest area with MCC; to produce simultaneous hardcopy and paper tape or receive punched cards. This information can be transmitted to similar machines over the established voice telephone networks or radio.</p>	

SPECIAL SERVICE DETACHMENT

MTEL 12-18

MISCELLANEOUS MAJOR AND MISSION  
EQUIPMENT JUSTIFICATION

(Includes items not justified elsewhere or are not authorized per  
criteria in AR 310-34)

ITEM NO.	ITEM	PURPOSE	REMARKS
Unknown	Kit, athletic and recreation, experimental type for Vietnam, consisting of following components: (as listed in MTEL)	This is experimental item for use in rest areas to supplement special services items on TOE of units occupying rest areas. It replaces following items:  550700 - Recreational Kit 53 components. 550725 - Recreational Kit 91 components. 550750 - Recreational Kit 142 components.  when used for rest area purpose only.	
Unknown	Kit, arts and crafts (with components as listed in MTEL).	This is experimental item for use in rest areas to supplement special services items on TOE of units occupying rest areas. Items in this kit are not duplicated in unit kits, and advice and teaching will be accomplished by arts and crafts specialist.	
Unknown	Receiver, radio	Latest developmental item to replace item currently justified on TOE.	

PART I

TOE/MTEL 12-18

REQUIREMENT FOR  
ORGANIC COMMUNICATIONS

UNIT SPECIAL SERVICE DETACHMENT PROPONENT USACDCCSSG

Net Number and Designation: Other Net

Purpose: Command and Control and Administration

Range: 150 KM Alternate Means: Messenger/Courier

Remarks: \_\_\_\_\_

STA NO.	USER	EQUIPMENT		INST	REMARKS
		QTY	NOMEN		
	CO Spec Svcs Unit	1	Telephone 312/PT		Telephone 312/PT required connection to switchboard servicing area for voice command and control to unit.
	1 ea Spec Svcs Team	4	Telephone 312/PT		

CDCAGA Form 27-5  
6 Dec 1965

A-VIII-23



KEY WORDS	LINK A		LINK B		LINK C	
	ROLE	WT	ROLE	WT	ROLE	WT
Morale Welfare Administration Management support Statistics Replacements Logistic factors Operational concepts						

INSTRUCTIONS

1. **ORIGINATING ACTIVITY:** Enter the name and address of the contractor, subcontractor, grantee, Department of Defense activity or other organization (*corporate author*) issuing the report.

2a. **REPORT SECURITY CLASSIFICATION:** Enter the overall security classification of the report. Indicate whether "Restricted Data" is included. Marking is to be in accordance with appropriate security regulations.

2b. **GROUP:** Automatic downgrading is specified in DoD Directive 5200.10 and Armed Forces Industrial Manual. Enter the group number. Also, when applicable, show that optional markings have been used for Group 3 and Group 4 as authorized.

3. **REPORT TITLE:** Enter the complete report title in all capital letters. Titles in all cases should be unclassified. If a meaningful title cannot be selected without classification, show title classification in all capitals in parenthesis immediately following the title.

4. **DESCRIPTIVE NOTES:** If appropriate, enter the type of report, e.g., interim, progress, summary, annual, or final. Give the inclusive dates when a specific reporting period is covered.

5. **AUTHOR(S):** Enter the name(s) of author(s) as shown on or in the report. Enter last name, first name, middle initial. If military, show rank and branch of service. The name of the principal author is an absolute minimum requirement.

6. **REPORT DATE:** Enter the date of the report as day, month, year, or month, year. If more than one date appears on the report, use date of publication.

7a. **TOTAL NUMBER OF PAGES:** The total page count should follow normal pagination procedures, i.e., enter the number of pages containing information.

7b. **NUMBER OF REFERENCES:** Enter the total number of references cited in the report.

8a. **CONTRACT OR GRANT NUMBER:** If appropriate, enter the applicable number of the contract or grant under which the report was written.

8b, 8c, & 8d. **PROJECT NUMBER:** Enter the appropriate military department identification, such as project number, subproject number, system numbers, task number, etc.

9a. **ORIGINATOR'S REPORT NUMBER(S):** Enter the official report number by which the document will be identified and controlled by the originating activity. This number must be unique to this report.

9b. **OTHER REPORT NUMBER(S):** If the report has been assigned any other report numbers (*either by the originator or by the sponsor*), also enter this number(s).

10. **AVAILABILITY/LIMITATION NOTICES:** Enter any limitations on further dissemination of the report, other than those imposed by security classification, using standard statements such as:

- (1) "Qualified requesters may obtain copies of this report from DDC."
- (2) "Foreign announcement and dissemination of this report by DDC is not authorized."
- (3) "U. S. Government agencies may obtain copies of this report directly from DDC. Other qualified DDC users shall request through \_\_\_\_\_."
- (4) "U. S. military agencies may obtain copies of this report directly from DDC. Other qualified users shall request through \_\_\_\_\_."
- (5) "All distribution of this report is controlled. Qualified DDC users shall request through \_\_\_\_\_."

If the report has been furnished to the Office of Technical Services, Department of Commerce, for sale to the public, indicate this fact and enter the price, if known.

11. **SUPPLEMENTARY NOTES:** Use for additional explanatory notes.

12. **SPONSORING MILITARY ACTIVITY:** Enter the name of the departmental project office or laboratory sponsoring (paying for) the research and development. Include address.

13. **ABSTRACT:** Enter an abstract giving a brief and factual summary of the document indicative of the report, even though it may also appear elsewhere in the body of the technical report. If additional space is required, a continuation sheet shall be attached.

It is highly desirable that the abstract of classified reports be unclassified. Each paragraph of the abstract shall end with an indication of the military security classification of the information in the paragraph, represented as (TS), (S), (C), or (U).

There is no limitation on the length of the abstract. However, the suggested length is from 150 to 225 words.

14. **KEY WORDS:** Key words are technically meaningful terms or short phrases that characterize a report and may be used as index entries for cataloging the report. Key words must be selected so that no security classification is required. Identifiers, such as equipment model designation, trade name, military project code name, geographic location, may be used as key words but will be followed by an indication of technical content. The assignment of links, rules, and weights is optional.