



ELSEVIER

Contents lists available at ScienceDirect

MethodsX

journal homepage: www.elsevier.com/locate/mex

A filtering method to reveal crystalline patterns from atom probe microscopy desorption maps

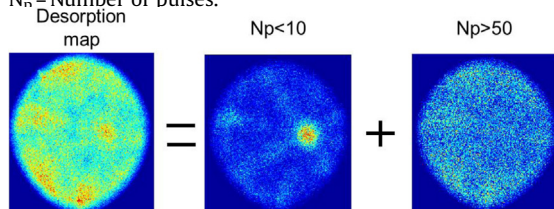


Lan Yao

Department of Materials Science and Engineering, University of Michigan, Ann Arbor, MI 48109, United States

GRAPHICAL ABSTRACT

N_n = Number of pulses.



N_p = Number of pulses

ABSTRACT

A filtering method to reveal the crystallographic information present in Atom Probe Microscopy (APM) data is presented. The method filters atoms based on the time difference between their evaporation and the evaporation of the previous atom. Since this time difference correlates with the location and the local structure of the evaporating atoms on the surface, it can be used to reveal any crystallographic information contained within APM data. The demonstration of this method is illustrated on:

- A pure Al specimen for which crystallographic poles are clearly visible on the desorption patterns easily indexed.
- Three Fe-15at.% Cr datasets where crystallographic patterns are less obvious and require this filtering method.

© 2016 Published by Elsevier B.V. This is an open access article under the CC BY license (<http://creativecommons.org/licenses/by/4.0/>).

ARTICLE INFO

Method name: A filtering method to reveal crystalline patterns from atom probe microscopy desorption maps

Keyword: Atom probe microscopy

Article history: Received 9 November 2015; Accepted 23 March 2016; Available online 26 March 2016

E-mail address: lanyao@umich.edu (L. Yao).

<http://dx.doi.org/10.1016/j.mex.2016.03.012>

2215-0161/© 2016 Published by Elsevier B.V. This is an open access article under the CC BY license (<http://creativecommons.org/licenses/by/4.0/>).

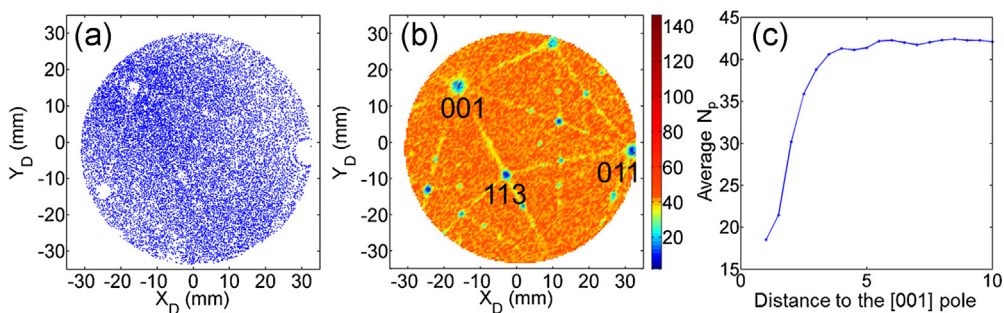


Fig. 1. (a) Desorption map of an aluminum specimen. (b) Colorized by the average number of pulses of evaporation events on each pixel. (c) Calculated distance from the [001] pole to the evaporation events classified by the average number of pulses.

Atom probe microscopy (APM) is an advanced imaging and analysis technique to acquire nano-scale chemical and structural information from solid materials with near-atomic resolution [1–3]. The collected information is presented as a 3D volume containing atoms, whose positions and chemical identities were determined. APM is the only technique providing 3D atomic-scale composition information. However the amount of structural information can often be limited by spatial resolution that strongly depends on the chemistry of the analyzed material. Field ion microscopy imaging has been traditionally used for crystallographic imaging and orientation determination of needle-shaped specimens [4,5]. However, in addition to declining popularity of this technique compared to APM, new data analysis tools have been developed to quantify crystallographic and compositional information simultaneously within APM data, which are particularly amenable for materials with relatively uncomplicated field evaporation behavior [6,7]. These data analysis techniques can not only be used to calibrate the reconstruction of datasets, or to inform on the orientation of the crystals being analyzed, but also to enable quantitative analysis of orientation-dependent features such as dislocations, precipitates, and grain boundaries [8–11].

In APM, specimens are prepared into a needle shape with a sharp pointed end. The radius of the specimen apex is normally between 20 and 100 nm. Although it is generally described as a spherical shape, the actual apex surface is not continuously smooth and presents some roughness due to the atomic nature of the surface structures. This results in the field distribution not being uniform at atomic level [12], and therefore in a non-uniform projection of the evaporated atoms onto the detector. Since the atomic surface structure directly depends on the crystallographic orientation of the specimen, the desorption maps, that are the cumulative 2D histogram of all detected atoms on the detector, can reflect the crystallinity and orientation of the sample. Low-density regions on desorption maps are generally associated with low-order crystallographic directions or planes intercepting the specimen surface, because in these regions, the surface morphology causes atoms to evaporate in directions away from the normal direction [13]. By analyzing the symmetry of the contrast patterns present in desorption maps, one may derive the crystallographic orientation of the specimen. As an example, Fig. 1(a) shows a desorption map obtained from a pure Al sample where the [001] and [011] directions can easily be identified.

Mining crystallographic information from APM datasets, however, is not always as obvious. The distinct patterns that arise from the field evaporation of pure metals or alloys with low solute concentrations come from the ordered sequence of evaporation of the surface atoms and the steady-state morphology of the surface. For more concentrated alloys, the different evaporation probability for each atom type generates randomness in the sequence of evaporation of the atoms. The departure directions of the evaporating ions becomes somewhat scattered resulting in blurring of desorption maps and crystalline patterns.

To remediate this inherent limitation, we introduce an alternative method that can be used to identify crystallographic patterns from desorption maps. During APM data collection, the field evaporation event or the time of departure of an ion from the surface field evaporation is controlled by application of voltage or laser pulses during which the evaporation rate becomes non negligible. It

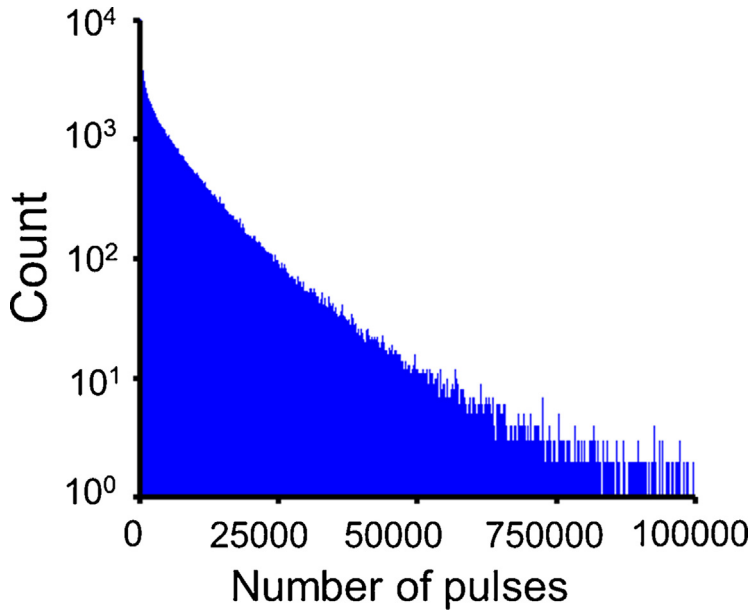


Fig. 2. Experimental histogram counting the events classified by the number of pulses.

turns out that the number of pulses (N_p) being applied between an evaporated atom and the prior event is a strong function of the surface structure and therefore crystallographic orientation. As an illustration, Fig. 1(b) shows a desorption map collected from the pure Al specimen shown in Fig. 1(a), where each pixel was colored based on the average number of pulses N_p between detector hit events. Comparing Fig. 1(a) and (b), it is clear that atoms from low-density regions (i.e. low-index regions) require fewer N_p . This is further illustrated in Fig. 1(c) where it is clear that N_p decreases significantly close to the [001] pole.

This observation may be explained by the physics of field evaporation, where the evaporation of an atom is a thermally activated process. The time required for an atoms to evaporate, τ_D , is inversely proportional to the probability of evaporation:

$$\tau_D \propto \exp\left(-a\left(\frac{F - F_e}{F_e}\right)\right) \quad (1)$$

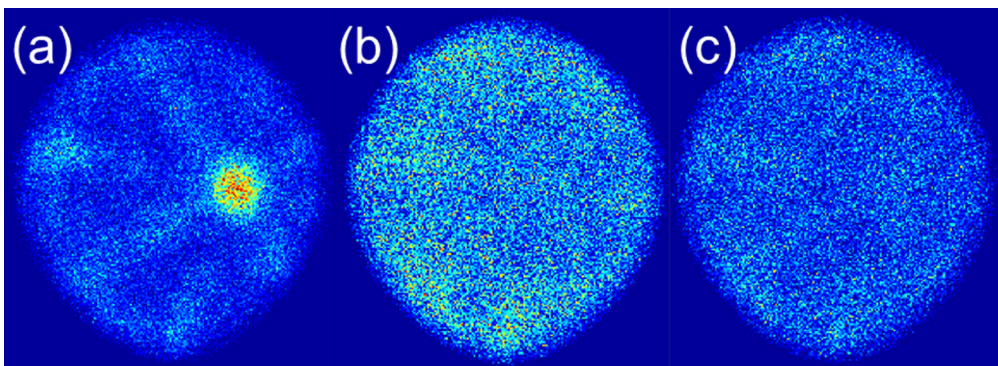


Fig. 3. Desorption map from a Fe-15at.%Cr APM specimen filtered using (a) $N_p < 10$ (b) $50 < N_p < 100$ (c) $100 < N_p < 200$.

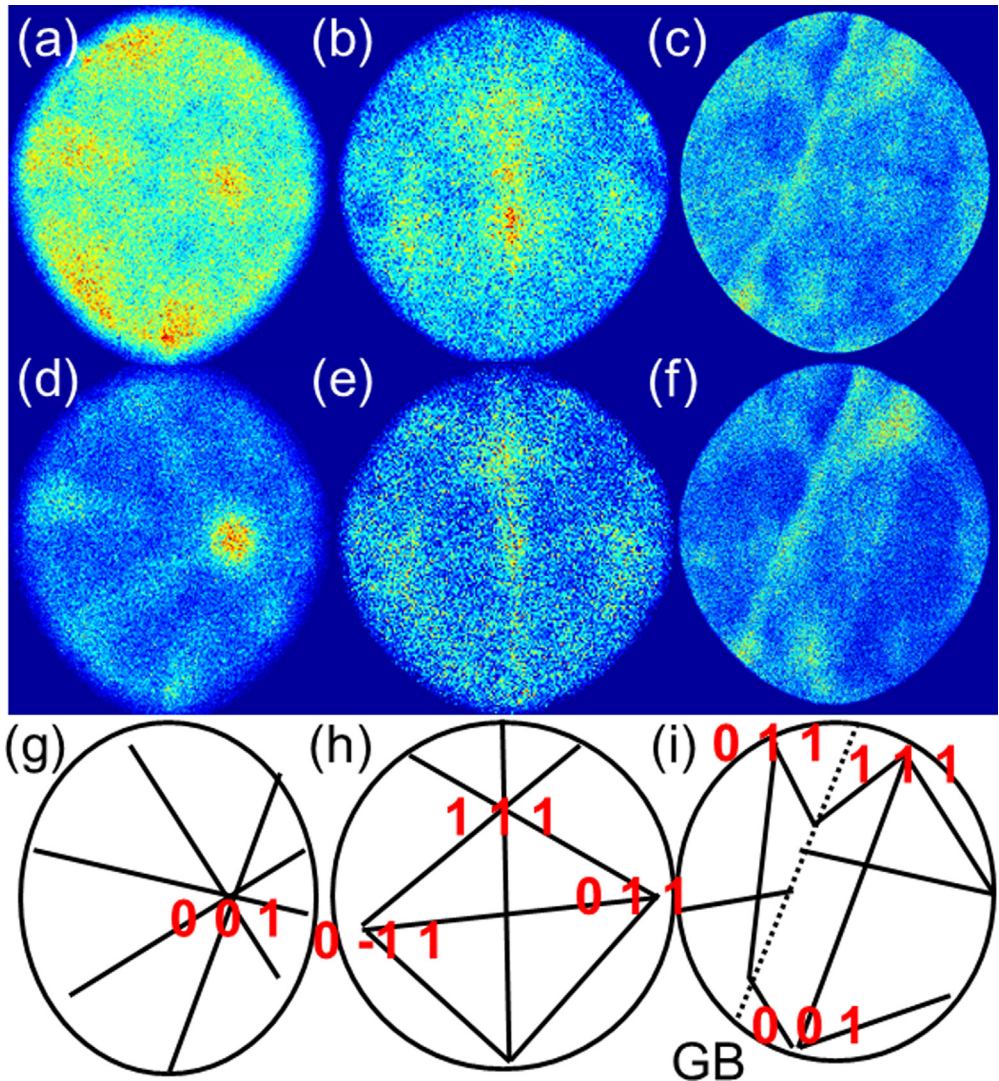


Fig. 4. (a–c) Desorption maps of three Fe-15at.% Cr specimens. (d–f) Filtered desorption maps using $N_p < 10$ and (g–h) Schematic maps with highlighted zone lines and Miller indices for the identified poles.

where a is a constant, F is the applied field and F_e is the evaporation field of the material [14]. Since a sufficiently high evaporation field is only reached during the application of either voltage or laser pulsing, τ_D is proportional to N_p . A recent simulation study has showed that atoms on low-index planes are generally subjected to higher applied field F with lower evaporation F_e . They have higher chance of evaporation, thus need shorter waiting time τ_D and less N_p to activate evaporation [12]. Therefore, N_p can provide an indirect signature for low-indexed poles or zone lines.

The method is now applied to the desorption maps obtained from concentrated Fe-15at.%Cr that do not exhibit clear crystallographic patterns. We note that a low-alloy iron-based material has been found to display clear enough patterns for crystallographic identification [15]. The Fe-Cr specimens were prepared by focused ion beam milling using a FEI Helios tool and analyzed using a Cameca LEAP

4000XHR instrument operated at a temperature of 50 K, 200 kHz voltage pulse repetition rate, and 20% pulse fraction.

First, a histogram of the N_p values is generated (Fig. 2). It illustrates an exponential decay with higher number of pulses, but the trend does not follow at lower number of pulses. This indicates that the field evaporation at tip surface is not random [14]. The desorption map is then filtered for different ranges of N_p (Fig. 3). For the best contrast of non-randomly evaporated events, the events with $N_p < 10$ is selected first for creating desorption map. It shows distinguishable crystalline patterns, whereas the other two with higher N_p values show random contrast. This is consistent with the observations from the Al specimen, according to which low-index regions correlates with low N_p values.

The method is further applied to the two additional Fe-15at.% Cr APM specimen, with different crystal orientations. The third specimen also contains a grain boundary. The desorption maps (Fig. 4(a–c)) do not show any crystalline patterns. The filtering method was applied selecting atoms evaporated with $N_p < 10$ pulses. The filtered desorption maps are shown in Fig. 4(d–f) where the crystallographic contrast has become more visible. For example, the [001] pole not visible in Fig. 4(a) is clearly visible in Fig. 4(d). However, the location of only one pole is not necessarily sufficient for unambiguous identification of its crystallographic index. Additional information may come from zone lines visible in (Fig. 4(d)) and from the pattern symmetry they form, the crystal orientation of this specimen can be determined.

In the second example, one might guess for the presence of 3 poles (Fig. 4(b)), but their identities are only revealed by the symmetry present in the filtered map (Fig. 4(e)). The method can particularly be helpful for the third dataset containing a grain boundary. There is limited areas covering the two crystals on either side of the boundary and insufficient crystallographic information from the desorption map (Fig. 4(c)) to determine the orientation of the grains. Again the crystalline patterns present in the filtered map can help to identify the crystallographic information within each grain (Fig. 4(f)). From such a dataset, one can access not only the chemistry of the grain boundary but also its characteristics via the five-degrees of freedom that uniquely describe grain boundaries.

Acknowledgements

The author would like to thank Dr. Baptiste Gault for providing data, analyses, and figure of the studies of evaporation events of the aluminum sample. The author also thanks Prof. Emmanuelle Marquis for the fruitful discussion about the idea and presentation of the work. The author wishes to acknowledge financial support from the Air Force Office of Scientific Research Award No. FA9550-14-1-0249.

MethodsX thanks the reviewers (anonymous) of this article for taking the time to provide valuable feedback.

References

- [1] M.K. Miller, R.G. Forbes, *Atom-Probe Tomography: The Local Electrode Atom Probe*, Springer, 2014.
- [2] D.J. Larson, T. Prosa, R. Ulfig, B. Geiser, T. Kelly, *Local Electrode Atom Probe Tomography*, Springer, 2014.
- [3] B. Gault, M.P. Moody, J.M. Cairney, S.P. Ringer, *Atom Probe Microscopy*, Springer, 2012.
- [4] E.W. Müller, *Das Feldionenmikroskop*, *Z. Phys.* 31 (1951) 136.
- [5] T.T. Tsong, *Atom Probe Field Ion Microscopy. Field Emission, and Surfaces and Interfaces at Atomic Resolution*, Cambridge University Press, Cambridge, 1990.
- [6] L. Yao, M.P. Moody, J.M. Cairney, D. Haley, A.V. Ceguerra, C. Zhu, S.P. Ringer, Crystallographic structural analysis in atom probe microscopy via 3D Hough transformation, *Ultramicroscopy* 111 (6) (2010) 458.
- [7] M.P. Moody, B. Gault, L.T. Stephenson, D. Haley, S.P. Ringer, Qualification of the tomographic reconstruction in atom probe by advanced spatial distribution map techniques, *Ultramicroscopy* 109 (2009) 815.
- [8] M.P. Moody, F. Tang, B. Gault, S.P. Ringer, J.M. Cairney, Atom probe crystallography: characterization of grain boundary orientation relationships in nanocrystalline aluminium, *Ultramicroscopy* 111 (6) (2011) 493.
- [9] L. Yao, S.P. Ringer, J.M. Cairney, M.K. Miller, The anatomy of grain boundaries: their structure and atomic-level solute distribution, *Scr. Mater.* 69 (8) (2013) 622.
- [10] M. Bachhav, L. Yao, G.R. Odette, E.A. Marquis, Microstructural changes in a neutron-irradiated Fe-6at.% Cr alloy, *J. Nucl. Mater.* 453 (1) (2014) 334.
- [11] V.J. Araullo-Peters, B. Gault, S.L. Shrestha, L. Yao, M.P. Moody, S.P. Ringer, J.M. Cairney, Atom probe crystallography: atomic-scale 3-D orientation mapping, *Scr. Mater.* 66 (11) (2012) 907.

- [12] L. Yao, T. Withrow, O.D. Restrepo, W. Windl, E.A. Marquis, Effects of the local structure dependence of evaporation fields on field evaporation behavior, *Appl. Phys. Lett.* 107 (2015) 241602.
- [13] F. Vurpillot, A. Bostel, D. Blavette, A new approach to the interpretation of atom probe field-ion microscopy images, *Ultramicroscopy* 89 (1–3) (2001) 137.
- [14] F.D. Geuser, B. Gault, A. Bostel, F. Vurpillot, Correlated field evaporation as seen by atom probe tomography, *Surf. Sci.* 601 (2007) 536.
- [15] L. Yao, J.M. Cairney, C. Zhu, S.P. Ringer, Optimisation of specimen temperature and pulse fraction in atom probe microscopy experiments on a microalloyed steel, *Ultramicroscopy* 111 (6) (2010) 648.