

Lateral-Directional Active Flow Control on a Hybrid ICE-101/Saccon UCAV

Jürgen Seidel

October 8, 2015

Table of contents

- 1 Simulations
 - Setup
 - Results

CFD description

CFD code

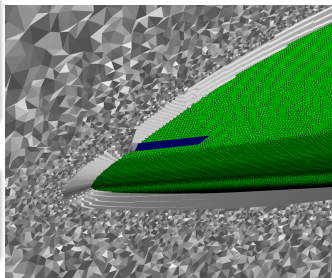
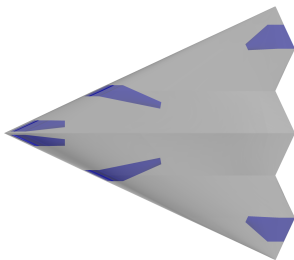
- HPCMP CREATE-AV™ / *Kestrel*
- Cell-centered finite volume
- Compressible Navier-Stokes equations
- 2nd-order in space and time
- SARC turbulence model

Grid

- Geometry with 6 forcing slots
- 71M cells
- $y^+ < 1$

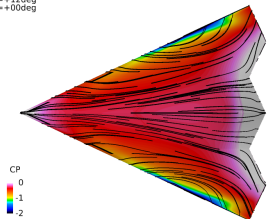
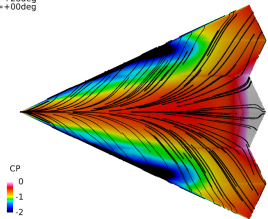
Forcing

- Source boundary condition
- $c_\mu = 0.005$

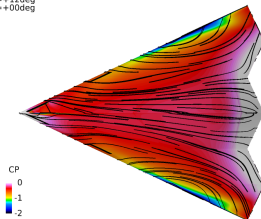
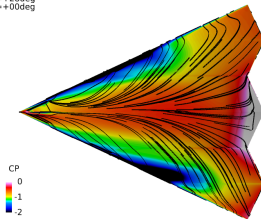


Comparison Unforced - Apex Forcing

Unforced

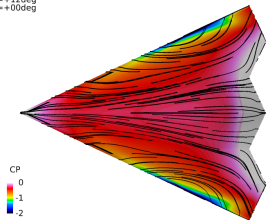
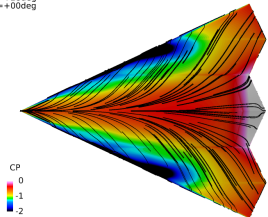
 $\alpha = +12\text{deg}$
 $\beta = +00\text{deg}$  $\alpha = +28\text{deg}$
 $\beta = +00\text{deg}$ 

Apex Forcing

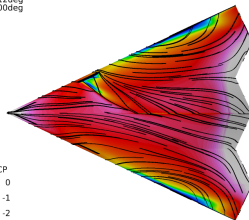
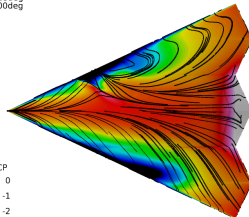
 $\alpha = +12\text{deg}$
 $\beta = +00\text{deg}$  $\alpha = +28\text{deg}$
 $\beta = +00\text{deg}$ 

Comparison Unforced - Midspan Forcing

Unforced

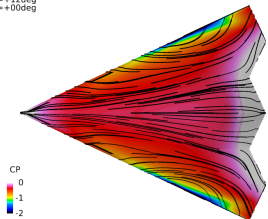
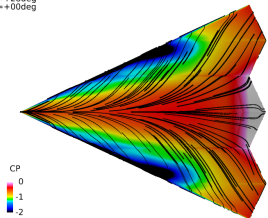
 $\alpha = +12\text{deg}$
 $\beta = +00\text{deg}$  $\alpha = +28\text{deg}$
 $\beta = +00\text{deg}$ 

Midspan Forcing

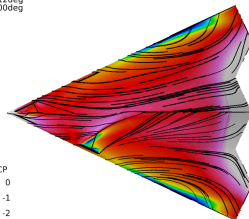
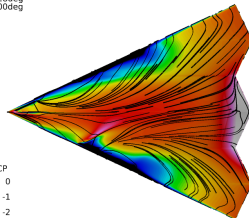
 $\alpha = +12\text{deg}$
 $\beta = +00\text{deg}$  $\alpha = +28\text{deg}$
 $\beta = +00\text{deg}$ 

Comparison Unforced - Combined Forcing

Unforced

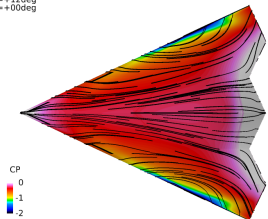
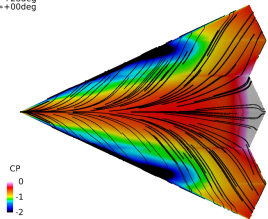
 $\alpha = +12\text{deg}$
 $\beta = +00\text{deg}$  $\alpha = +28\text{deg}$
 $\beta = +00\text{deg}$ 

Combined Forcing

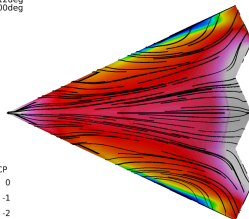
 $\alpha = +12\text{deg}$
 $\beta = +00\text{deg}$  $\alpha = +28\text{deg}$
 $\beta = +00\text{deg}$ 

Comparison Unforced - Trailing Edge Forcing

Unforced

 $\alpha = +12\text{deg}$
 $\beta = +00\text{deg}$  $\alpha = +28\text{deg}$
 $\beta = +00\text{deg}$ 

TE Forcing

 $\alpha = +12\text{deg}$
 $\beta = +00\text{deg}$  $\alpha = +28\text{deg}$
 $\beta = +00\text{deg}$ 