

LLMapReduce: Multi-Lingual Map-Reduce for Supercomputing Environments

Chansup Byun, Jeremy Kepner, William Arcand, David Bestor, Bill Bergeron, Vijay Gadepally, Matthew Hubbell, Peter Michaleas, Julie Mullen, Andrew Prout, Antonio Rosa, Charles Yee, Albert Reuther
MIT Lincoln Laboratory, Lexington, MA, U.S.A

Abstract— The map-reduce parallel programming model has become extremely popular in the big data community. Many big data workloads can benefit from the enhanced performance offered by supercomputers. LLMapReduce provides the familiar map-reduce parallel programming model to big data users running on a supercomputer. LLMapReduce dramatically simplifies map-reduce programming by providing simple parallel programming capability in one line of code. LLMapReduce supports all programming languages and many schedulers. LLMapReduce can work with any application without the need to modify the application. Furthermore, LLMapReduce can overcome scaling limits in the map-reduce parallel programming model via options that allows the user to switch to the more efficient single-program-multiple-data (SPMD) parallel programming model. These features allow users to reduce the computational overhead by 10x compared to standard map-reduce. LLMapReduce is widely used by hundreds of users at MIT. Currently LLMapReduce works with several schedulers such as SLURM, Grid Engine and LSF.

Keywords—LLMapReduce; map-reduce; performance; scheduler; Grid Engine; SLURM; LSF

I. INTRODUCTION

Large scale computing is currently dominated by four ecosystems: supercomputing, database, enterprise, and big data [1]. Each of these ecosystems has its strengths.

The supercomputing ecosystem provides the highest performance computing capabilities in the world via a range of well-established, highly optimized, specially designed high performance technologies. Among these technologies are high performance messaging libraries (e.g., MPI [2, 3]) that utilize high performance interconnects (e.g., InfiniBand [4], IBM Blue Gene interconnects [5], Cray interconnects [6]). High performance math libraries (e.g., BLAS [7, 8], LAPACK [9], ScaLAPACK [10]) designed to exploit special processing hardware. High performance parallel files systems (e.g., LUSTRE [11], GPFS [12]) and High performance schedulers (e.g., LSF [13], GridEngine [14, 15, 16], SLURM [17, 18]). Combined, these technologies consistently achieve near peak speedups on well-established benchmarks (e.g., HPC Challenge [19]) and many applications. On the largest systems in the world these speedups can be in the millions.

Relational or SQL (Structured Query Language) database ecosystems [20, 21] have been the de facto interface to databases since the 1980s and are the backbone of electronic transactions around the world. Enterprise ecosystems often exploit virtualization technologies (e.g., VMware) to deliver a

vast range of web services such as e-mail, calendar, document sharing, videos, and product information. Big data ecosystems represent non-traditional, relaxed consistency, triple store databases which provide high performance on commodity computing hardware to I/O intensive data mining applications with low data modification requirements. These databases are the backbone of many web companies, such as, Google Big Table [22], Amazon Dynamo [23], Cassandra (cassandra.apache.org), and HBase (hbase.apache.org).

The MIT Lincoln Laboratory LLGrid team provides supercomputing capabilities to over 1000 users at MIT [24, 25]. Increasingly, these users require capabilities that are found in all four ecosystems. LLGrid has developed the MIT SuperCloud environment that allows all four ecosystems to run on the same hardware without sacrificing performance [1]. The MIT SuperCloud has spurred the development of a number of cross-ecosystem innovations in high performance databases [26, 27], database management [28], database federation [29, 30, 31], data analytics [32], data protection [33], and system monitoring [34, 35].

Perhaps the most impactful MIT SuperCloud innovation has been the LLMapReduce environment that is used by a large fraction of the LLGrid user base to perform map-reduce computations on LLGrid supercomputers. The map-reduce parallel programming model is one of the oldest parallel programming models. The map-reduce name derives from the “map” and “reduce” functions found in Common Lisp since the 1990s. Popularized by Google [36] and Apache Hadoop [37], map-reduce has become a staple technology of the ever-growing big data community. Traditionally, the big data community has relied on inexpensive clusters for the majority of its computational needs. Recently, it has become apparent that many big data workloads can benefit from the superior performance and ease-of-use offered by supercomputers. Many LLGrid users are recent graduates and have prior experience with the map-reduce programming model. It became vital to LLGrid to develop an environment that would allow these users to leverage their prior map-reduce knowledge in a way that would allow them take advantage of the superior performance offered by a supercomputing ecosystem.

Map-reduce popularity stems from its simplicity. A map-reduce program consists of two parts. A map that runs the same program on many inputs (usually files) and produces one output for each input. A reduce that runs another program on the map outputs to produce a single final result. This style of programming can be easily implemented in any mature

supercomputing scheduler via a simple submission script. In addition, supercomputing schedulers have the advantage of being programming language agnostic.

The Apache Hadoop map-reduce implementation provides a number of benefits such as automatic parallelization and fault-tolerant features for Java programmers [38]. Although the support has been extended to other languages such as Python [39], it still requires significant modification of programmer code to use.

Scientists and engineers at MIT Lincoln Laboratory must work with codes that are written in many languages. The LLGrid team developed and deployed LLMaReduce on its supercomputers systems [26], using the Lustre central storage system instead of the Apache Hadoop distributed filesystem (HDFS) [37]. LLMaReduce can launch any program in any language on any supercomputers with a standard scheduler. Workloads can be distributed in a block or cyclic fashion to improve load balancing. Since the initial deployment in 2012, LLMaReduce has added a variety of features to reduce the performance overheads associated with map-reduce programming. One of the most compelling features is the LLMaReduce multiple-input-multiple-output (MIMO) mode that transparently morphs a user’s program from a map-reduce parallel programming model to the highly efficient single-program-multiple data (SPMD) data model that is widely used in the supercomputing ecosystem. Thus, a user gets the familiarity of map-reduce and the performance of SPMD. Using this feature often results in 10x increase in performance over standard map-reduce. Currently, LLMaReduce can work with the majority of schedulers such as SLURM [17, 18], open and commercial distribution of Grid Engine [14, 15, 16] and IBM Platform LSF [13]. However, LLMaReduce was written with the support for a wide range of schedulers in mind; it is reasonably trivial to add support for any other schedulers.

The rest of the paper is organized as follows. Section II presents an overview of LLMaReduce. Section III describes specific use case examples of LLMaReduce. Section IV presents various performance results. The work is summarized in section V.

II. LLMAPREDUCE

The map-reduce parallel programming model is the simplest of all parallel programming models; for many programmers it is easier to learn than message passing or distributed arrays. The map-reduce parallel programming model consists of two user written programs: a Mapper and a Reducer. The input to the Mapper is a file, and the output is another file. The input to the Reducer is the set of Mapper output files. The output of Reducer is a single file. Launching consists of starting many Mapper programs each with a different input file. When the Mapper programs all have completed, the Reduce program is run on the Mapper outputs.

LLMaReduce has been deployed on the supercomputer systems by utilizing a centralized high-performance parallel filesystem such as the Lustre filesystem [11]. Because most supercomputers run a scheduler, LLMaReduce is designed to use the existing schedulers to manage its workloads. LLMaReduce was originally written to work with the open

source Grid Engine [15, 16], and more recently it has been extended to work with SLURM [17, 18] and LSF [13].

LLMaReduce assumes that users will have their data already partitioned into data files. Such segmentation is natural for many application areas. For example, when collecting data from various sensors, they are often collected in a large number of segmented files instead of one large, holistic file. This allows users to deploy their applications rapidly and efficiently. LLMaReduce identifies the input files to be processed by scanning a given input directory or reading a list from a given input file as shown in the step 1 in Fig. 1. LLMaReduce generates all the necessary temporary files under the directory, .MAPRED.PID, where the PID is the process identification number.

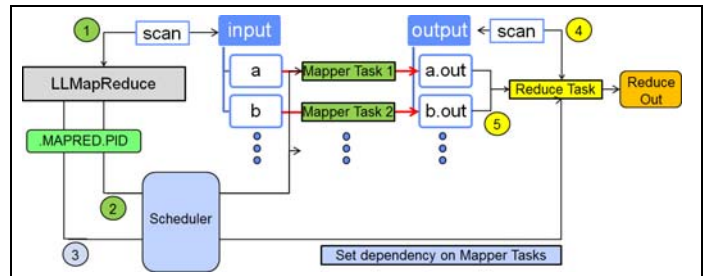


Fig. 1. A schematic diagram showing how LLMaReduce works. The Map Reduce process identifies input files which are used to generate an array job with the help of the HPC scheduler. By setting a dependency between the mapper and reducer jobs, the output of completed jobs are passed through a reducer to generate the final result.

Many filesystems operate best when the number of files per directory is less than 10,000. LLMaReduce users can build a nested call to LLMaReduce for processing whole hierarchies of data. Then, by accessing the scheduler at step 2, it creates an array of many tasks, called an array job, which is denoted as “Mapper Task 1”, “Mapper Task 2”, and so on.

Once the array job is created and dispatched for execution, each input file will be processed by one of the tasks with the specified application at the command line, noted as “Mapper” in Fig. 1. The application can be any type of executable written in any language, such as a shell script, a Java program or a MATLAB script. In addition, there is an option to do further processing on the results, if there are any, by creating a dependent task at step 3. This is denoted as the “Reduce Task” in Fig. 1. The reduce task will wait until all the mapper tasks are completed by setting a job dependency between the mapper tasks and reduce task. The reduce application is responsible to scan the output files from the mapper tasks at step 4 and to process them into the final results at step 5.

The map application of LLMaReduce requires two input arguments: one for the input filename and the other for the output filename. Subsequently, the reducer application takes two arguments as input, which are the directory path where the results of the map tasks reside and the output filename for the reduce result. The reduce application may use the input path to scan and read the output generated by the map tasks.

The available options of LLMaReduce are shown in Fig. 2. After LLMaReduce was initially deployed, some users tried to launch their applications with a number of data files that exceeded the limit that the scheduler job array could accommodate. So the `--np` option was modified to not only limit the total number of compute tasks it generates, but also calculates the number of data files per each task to be assigned. The `--ndata` option allows users to define how many data files are to be assigned per each task, which will override the `--np` option. The `--ext` option allows changing the default extension, “out”, with the user-defined extension name. Along with the `--ext` option, the `--delimiter` option allows the change of the default, “.” extension with a user-defined delimiter when adding the extension. The `--distribution` option enables changing how the input data is distributed among the given number of task processes; the default is the block distribution. The `--exclusive` option enables the use of entire compute nodes for jobs. By default, LLMaReduce will delete the `.MAPRED.PID` directory after the job is completed. However, users can keep the temporary directory for debugging purpose with the `--keep=true` option. LLMaReduce allows adding some additional scheduler options when generating the job submission scripts with the `--options` option. This is handy when some data processing requires more memory than the standard allowance.

```

LLMaReduce --np=Np \
--input=input_dir \
--output=output_dir \
--mapper=myMapper \
--reducer=myReducer \
--redout=output_filename \
--ndata=NdataPerTask \
--distribution=block|cyclic \
--subdir=true|false \
--ext=myExt \
--delimiter=myExtDelimiter \
--exclusive=true|false \
--keep=true|false \
--apptype=mimo|siso \
--options=<scheduler_options_to_add>

```

Fig. 2. Available options of LLMaReduce.

A. Data in a Hierarchical Directory Structure

The `--subdir` option allows processing of data files stored in a hierarchical directory structure as shown in Fig. 3. Hierarchical data storage is desirable for simplifying the organization of data and for enhancing the performance of the underlying filesystem. For example, a full listing of 100,000 files in a single directory on a Lustre filesystem can take longer than desired. For performance reason, it is recommended to distribute 100,000 files into multiple sub-directories. However, this will make the data processing inconvenient to users because users need to take care of the directory hierarchy when submitting their jobs for processing.

By defining the `--subdir=true` option with the top directory path of to the input data, as shown in Fig. 3, LLMaReduce will scan the input directory recursively and list all the files

under the input directory as input data to the map process. In addition, LLMaReduce will duplicate the input data structure to the output directory. This option allows users to deal with large number of input files intuitively and efficiently.

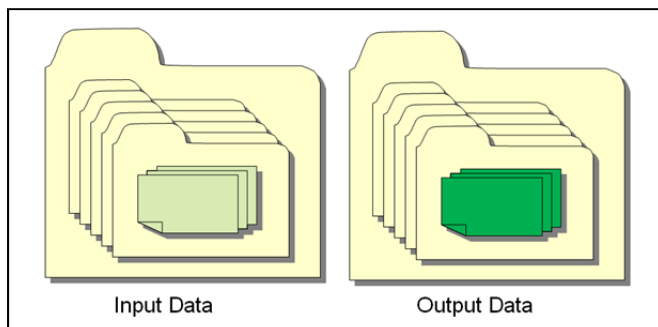


Fig. 3. The `--subdir=true` option replicates the directory hierarchy structure between the input and output directory.

B. Data Consolidation

By default, LLMaReduce expects that the map application takes single input and single output path (siso) as shown in Fig. 4(a). However, this will incur overhead associated with repeated startups of the map application. Some applications such as MATLAB codes can save significant overhead cost with the minor change of having the map application start only once and read many lines of input/output path pairs to process the given data as shown in Fig. 4(b). For this purpose the `--apptype=mimo` option will generate the input files for the modified map application that will read the input file with the multiple lines of input/output filename pairs.

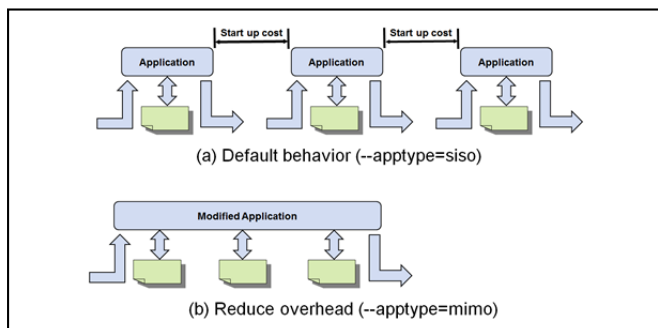


Fig. 4. Reducing overhead costs associated with repeated startups of the map application with the `--apptype=mimo` option.

This option is particularly useful for processing a large number of data files with relatively short running applications as compared to their startup time. In this case, the time saving from the option becomes significant. However, if map applications run for a long time compared to their startup time, the cost saving is less.

III. USE CASES

In this section, two use cases are presented to demonstrate how LLMaReduce is used in practice. First, a MATLAB application that converts an RGB image into a gray-scale image is used with a small number of image files. It demonstrates the use of the Mapper and assigning multiple

input files to one application execution. Next, a Java application that counts the number of unique words in the given text files illustrates the use of the Mapper and Reducer.

A. MATLAB Application

An image conversion function, called `imageConvert()`, is shown in Fig. 5. The function takes two arguments, the input and output image names. It reads in an RGB image file and converts it into a gray scale image. Then, it saves the gray scale image into the file of the output name. This satisfies the LLMaPReduce API requirements.

To run the MATLAB program requires a wrapper script to receive the input and output file names that are provided to LLMaPReduce. The wrapper script will execute MATLAB with the corresponding input and output files when dispatched for execution by the scheduler. An example wrapper script is shown in Fig. 6.

```
function imageConvert(inFile,outFile)
I=imread(inFile); J=rgb2gray(I);
dicomwrite(J,outFile);
```

Fig. 5. A MATLAB function, `imageConvert()`, to convert an RGB image into a gray scale image.

```
#!/bin/bash
cat<<EOF|matlab -nodisplay -
singleCompThread
inFile='$1'; outFile='$2';
imageConvert(inFile, outFile);
```

Fig. 6. An example wrapper script, `MatlabCmd.sh`, for the `imageConvert()` function.

In the above wrapper script, the variables, `$1` and `$2`, are the two input arguments (input and output file names), which are provided by LLMaPReduce. The script will execute the `imageConvert()` function with MATLAB when it is called by the run script, which is generated by LLMaPReduce. With the wrapper script, the image conversion job can be launched with one line of the LLMaPReduce command as shown in Fig. 7. In this case, each input image file in the input directory becomes a compute task of an array job automatically generated by LLMaPReduce. The resulting gray images are saved in the output directory as specified.

```
$ LLMaPReduce --mapper MatlabCmd.sh \
--input input --output output
```

Fig. 7. An example Map Reduce job with LLMaPReduce.

When the LLMaPReduce command is called, temporary files are created in the `.MAPRED.PID` directory, where PID is the process identification (PID) number of the LLMaPReduce command. These temporary files are generated for the specific scheduler being used on a particular supercomputer. The files for one job submission script and a number of run scripts for all compute tasks (one per compute task) is shown in Figs. 8 and 9, respectively. The job submission script shown in Fig. 8 is written for the open source Grid Engine scheduler, which has a number of options specific to the scheduler. The `-t 1-M`

option specifies an array job of M tasks, starting from 1 to M with an increment of one. M is determined by LLMaPReduce, which is the number of input image files in the input directory. Each compute task keeps its own log file, uniquely named with its job and task numbers. If there is any standard output, it goes into these log files.

```
#!/bin/bash
#$ -terse -cwd -V -j y -N MatlabCmd.sh
#$ -l excl=false -t 1-M
#$ -o .MAPRED.1120/llmap.log-$JOB_ID-$TASK_ID
./MAPRED.1120/run_llmap_$SGE_TASK_ID
```

Fig. 8. An example job submission script generated for the Grid Engine scheduler.

```
$ cat .MAPRED.1120/run_llmap_1 (for task 1)
#!/bin/bash
export PATH=${PATH}:.
MatlabCmd.sh input/image_1.jpg \
output/image_1.jpg.out
. . .

$ cat .MAPRED.1120/run_llmap_M (for task M)
#!/bin/bash
export PATH=${PATH}:.
MatlabCmd.sh input/image_M.jpg \
output/image_M.jpg.out
```

Fig. 9. A number of run scripts for all compute tasks generated by the LLMaPReduce.

The run script for each compute task is written to feed one input and one output argument to the wrapper script shown in Fig. 6. This meets the LLMaPReduce API requirement. As mentioned above, LLMaPReduce generates M run scripts, one run script per each compute task. As shown in Fig. 9, the output file name is determined by the name of the input file with the default extension, “.out”.

The example shown in Fig. 7 has an issue if there are a large number of input files in the given input directory. This can exceed the scheduler limit for how many tasks a job array can have. For example, the default maximum number of tasks of an array job is 75,000 for the open source Grid Engine scheduler. To handle this case, the `--np` option can be used to specify how many compute tasks LLMaPReduce should create. For example, if the `--np=100` option is used, only 100 compute tasks are created and each compute task will process a block of the total input data instead of a single data file. The block size is determined by LLMaPReduce.

```
$ LLMaPReduce --mapper MatlabCmdMulti.sh \
--input input --output output \
--np N --apptype mimo --ext gray
```

Fig. 10. An example map-reduce job to eliminate the overhead cost associated with the multiple execution of an application in the default processing model.

With the `--np` option, a large number of input data files can be handled easily. This approach executes the application

multiple times (as many as the number of input data files). There is a significant overhead cost associated with the repeated startups of the application, especially in complex programming environments such as MATLAB. One way to greatly reduce the overhead cost is to launch the application once and process all the data assigned to each compute task. This requires modifying the wrapper script shown in Fig. 6 in addition to modifying the job submission script and the run scripts shown in Figs. 8 and 9. This feature can be invoked by the command shown in Fig. 10. The command specifies a wrapper script, `MatlabCmdMulti.sh`, to handle the multiple lines of input and output file lists, created with the `--apptype=mimo` option. Also, with the `--ext=gray` option, the extension is renamed as “.gray” instead of the default, “.out”. An example wrapper script, `MatlabCmdMulti.sh`, for the `--apptype=mimo` option is presented in Fig. 11. This script reads in the input and output file names from the generated file provided by the run scripts, which are also generated by LLMaPReduce. The Fig. 11 script launches the application (MATLAB in this case) once and processes all the data, assigned by a dynamically generated file.

```
cat<<EOF|matlab -nodisplay -singleCompThread
inFile='$1'; fid=fopen(inFile);
tline=fgets(fid);
while ischar(tline)
    myStr=strsplit(tline);
    indata=deblank(myStr{1});
    outdata=deblank(myStr{2});
    imageConvert(indata, outdata);
    tline=fgets(fid);
end
fclose(fid);
EOF
```

Fig. 11. A wrapper script, `MatlabCmdMulti.sh`, to accept multiple lines of input and out file names with the `--apptype=mimo` option.

```
$ cat .MAPRED.2188/run_llmap_1 (for task 1)
#!/bin/bash
export PATH=${PATH}:.
MatlabCmdMulti.sh ./MAPRED.2188/input_1
. . .

$ cat .MAPRED.2188/run_llmap_N (for task N)
#!/bin/bash
export PATH=${PATH}:.
MatlabCmdMulti.sh ./MAPRED.2188/input N
```

Fig. 12. A number of run scripts for all compute tasks generated by LLMaPReduce.

With the `--apptype=mimo` option, LLMaPReduce generates a job submission script similar to Fig. 8. However, different run scripts are generated, named as `run_llmap_x`, which is shown in Fig. 12. The number `x` ranges from 1 to `N`, where `N` is the number of tasks defined by the `--np` option. In these run scripts, the wrapper script takes one input file, which is automatically generated by LLMaPReduce. The input files

named as `input_x`, which are also generated by LLMaPReduce, list the input and output file names.

B. A Java Application

A common map-reduce example is a word frequency counting application consisting of two Java codes `WordFrequencyCmd.java` and `ReduceWordFrequencyCmd.java` along with a few auxiliary codes [40]. The `WordFreqCmd.java` code requires three command line inputs: input, output, and a reference file. The reference file contains a list of words to be ignored for word counting. To comply with the LLMaPReduce API requirement, a wrapper script, `WordFreqCmd.sh`, has been created as shown in Fig. 13. In this wrapper script, the variables, `$1` and `$2`, represent the input and output files, respectively.

```
#!/bin/bash
java WordFrequencyCmd $1 $2 textignore.txt
```

Fig. 13. A wrapper script for the `WordFreqCmd.java` code.

Another wrapper script, `ReduceWordFreqCmd.sh`, is used to execute the `ReduceWordFrequencyCmd.java` code to collect the map process results as shown in Fig. 14. The reduce code scans the map results in the output directory and merges the results into a single file. The first argument (`$1`) for the reduce application is the location of the map process results and the second argument (`$2`) is the output name of the reduce application. Both arguments are provided by LLMaPReduce.

```
#!/bin/bash
java ReduceWordFrequencyCmd $1 $2
```

Fig. 14. A wrapper script for the `ReduceWordFreqCmd.java` code.

With these two wrapper scripts, a map-reduce job for the word frequency count can be launched by using LLMaPReduce as shown in Fig. 15. In this example, the `--distribution=cyclic` option is used to distribute the input data among the given number of compute tasks in a cyclic fashion. As mentioned in the previous MATLAB example, the map-reduce job launched by the command in Fig. 15 also incurs the computational overhead associated with the multiple startups of the word count application. The run script for the reduce task is submitted as a dependent job to the mapper job that only uses one task. The java application, `ReduceWordFrequencyCmd`, scans the results in the given directory (output) and merges them into a single file (default name: `llmapreduce.out`).

```
$ LLMaPReduce --np 3
--mapper WordFreqCmd.sh \
--reducer ReduceWordFreqCmd.sh \
--input input --output output \
--distribution cyclic
```

Fig. 15. A Map Reduce job for word frequency count using LLMaPReduce.

As with the MATLAB example, the overhead can be reduced by launching with the `--apptype=mimo` option as shown in Fig. 16. As mentioned previously, this option also

requires application modification to read in multiple lines of input and output pairs provided by LLMaReduce. The modified WordFreqCmdMulti.sh script for the --apptype=mimo option is shown in Fig. 17. It is similar to the script shown in Fig. 13 but executes a modified Java application called WordFrequencyCmdMulti.

```
$ LLMaReduce --np 3
--mapper WordFreqCmdMulti.sh \
--reducer ReduceWordFreqCmd.sh \
--input input --output output \
--apptype mimo
```

Fig. 16. A Map Reduce job for word frequency count using LLMaReduce with overhead cost reduction.

```
#!/bin/bash
java WordFrequencyCmdMulti $1 $2 \
textignore.txt
```

Fig. 17. A modified wrapper script for the WordFreqCmdMulti.java code.

The modified Java code, WordFrequencyCmdMulti.java, has some additional lines, which reads in multiple lines of the input and output filename pairs. The input to the modified Java code is automatically generated by LLMaReduce. The original section of the code processes the given input file and writes the results to the given output file. As a result, the Java code is invoked only once and processes all the input data assigned to its compute task.

IV. PERFORMANCE

In this section, the performance benefits of the --apptype=mimo (MIMO) option are presented. Two use cases from the previous section in addition to a user MATLAB application are used. Furthermore, the behavior of the three different options (DEFAULT, BLOCK, and MIMO) are compared by varying the number of processes and the number of input data files.

The toy examples described previously are small in terms of number of input data files. The MATLAB application converts 6 images over 2 compute tasks. The Java application counts word frequency of 21 text files over 3 compute tasks. The map-reduce jobs were executed with the BLOCK and MIMO options, and the total processing time was measured. The speed up is calculated by the ratio between the time with the BLOCK option and the time with the MIMO option. The results are presented in Table 1. Although there are only a small number of data files assigned to each compute task, both examples show speed up with the MIMO option.

TABLE I. SPEED UP WITH TOY EXAMPLES

Example	Type	Speed up
Matlab	Multiple app launches (BLOCK)	1
	Single app launch (MIMO)	2.41
Java	Multiple app launches (BLOCK)	1
	Single app launch (MIMO)	2.85

A performance study with a real user MATLAB application has been performed and the results are presented in Table 2. The MATLAB application does image processing, and the image files were distributed to 256 compute tasks. The number of input data files was 43,580 in this example. As MATLAB takes relatively significant time to launch as compared to other programs, the performance difference was significant. By using the MIMO option, the map-reduce job was able to run almost 12 times faster than the BLOCK option.

TABLE II. SPEED UP WITH A REAL WORLD APPLICATION

Example	Type	Speed up
Matlab	Multiple app launches (BLOCK)	1
	Single app launch (MIMO)	11.57

For the scalability study, three different LLMaReduce options (DEFAULT, BLOCK, and MIMO) were used with a MATLAB code that reads in a list of square matrices and multiplies the matrices. 512 input data files were created and run with various number of compute processes, ranging from 1, 2, 4, 8, 16, 32, 64, 128, and 256 for three different options. The results are presented in Figs. 18 and 19.

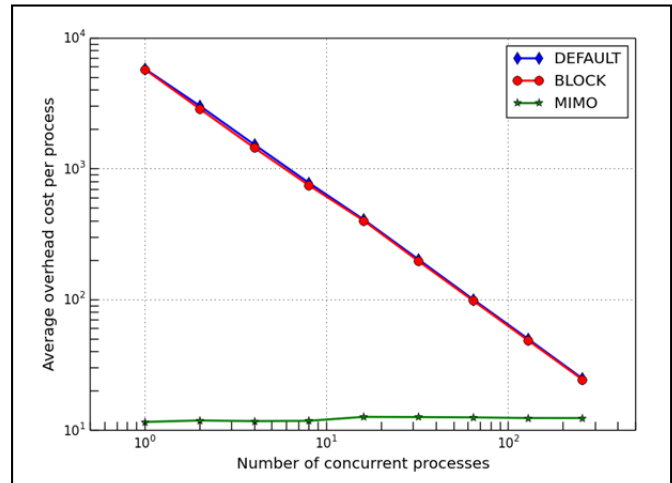


Fig. 18. The computational overhead cost when varying the number of compute processes, which changes the number of the input data files per compute task.

Fig. 18 shows the computational overhead associated with the cost of multiple application start-ups when dealing with more than one input data file per compute task. While the cases for the DEFAULT and BLOCK options show that the average overhead cost per compute process decreases linearly as the number of compute processes is increased, the overhead cost for the MIMO option remains relatively flat. As far as the overhead cost is concerned, both DEFAULT and BLOCK options show similar overhead, although the BLOCK option shows slightly smaller cost. The MIMO overhead cost is significantly smaller than those of the other two options. Thus the gap in the overhead cost between the MIMO and the other two options becomes significant when each compute task

processes a large number of data files. Fig. 18 clearly shows the benefits of the MIMO option when dealing with a large number of input data files per compute task.

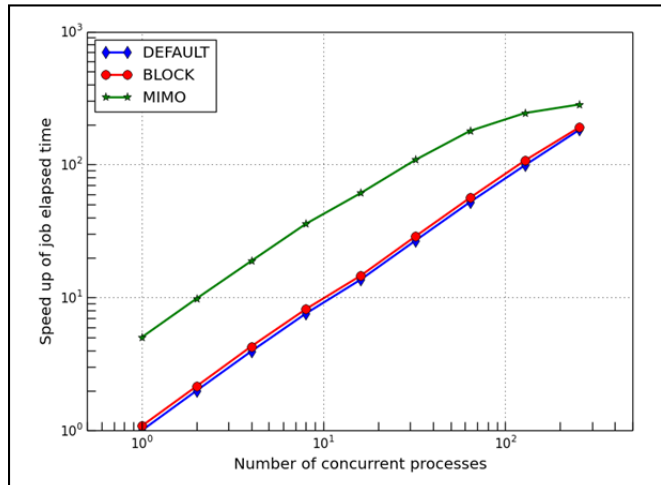


Fig. 19. The speed-up of job elapsed times with respect to the default job elapsed time with one compute process when varying the number of compute processes, which in turn changes the number of the input data files per compute task.

Fig. 19 shows the speed-up based on job elapsed times for the three different options with varying number of compute processes. The speed-up is calculated by the ratio between the DEFAULT job elapsed time obtained with one compute process and the other job elapsed times. Throughout all the numbers of the concurrent processes, the MIMO option performed the best, consistently outperforming the other two options. The BLOCK option performed slightly better than the DEFAULT option but the difference is marginal. As the number of concurrent processes is increased, the overhead cost per compute task diminishes. If each compute task processes only one data file, the results of all three options will converge at the same point.

V. SUMMARY

LLMapReduce has been developed and deployed on the supercomputers to support scientists and engineers at MIT. With LLMapReduce, users can deploy their map-reduce style applications quickly on a supercomputer. LLMapReduce can work with any executable application without the need for any modifications. However, for improved performance, LLMapReduce provides an option to consolidate multiple input data files per compute task as a single stream of input with minimal changes to the target application. This enables users to cut down the computational overhead associated with the cost of repeated application start-ups when dealing with more than one input data file per compute task. With a small change in a sample MATLAB image processing application, we have observed approximately 12x speed up by reducing the overhead associated with the repeated application start-ups. Currently LLMapReduce works with handful of schedulers including SLURM, Grid Engine and LSF.

REFERENCES

- [1] Reuther, A., Kepner, J., Arcand, W., Bestor, D., Bergeron, B., Byun, C., Hubbell, M., Michaleas, P., Mullen, J., Prout, A., and Rosa, A. 2013. LLSuperCloud: Sharing HPC Systems for Diverse Rapid Prototyping. IEEE High Performance Extreme Computing Conference (HPEC) (Waltham, MA., September 10-12, 2013)
- [2] Gropp, W., Lusk, E., Doss, N., and Skjellum, A. 1996. A high-performance, portable implementation of the MPI message passing interface standard. *Parallel computing*, 22(6), (September 1996), 789-828.
- [3] Gropp, W., Lusk, E., and Skjellum, A. 1999. *Using MPI: portable parallel programming with the message-passing interface* (Vol. 1). MIT Press.
- [4] Wang, H., Potluri, S., Luo, M., Singh, A. K., Sur, S., and Panda, D. K. 2011. MVAPICH2-GPU: optimized GPU to GPU communication for InfiniBand clusters. *Computer Science-Research and Development*, 26(3-4), (June 2011), 257-266.
- [5] Kumar, S., Mamidala, A., Heidelberg, P., Chen, D., and Faraj, D. 2014. Optimization of MPI collective operations on the IBM Blue Gene/Q supercomputer. *International Journal of High Performance Computing Applications*, 28(4), (November 2014), 450-464.
- [6] Shan, H., Wright, N. J., Shalf, J., Yelick, K., Wagner, M., and Wichmann, N. 2012. A preliminary evaluation of the hardware acceleration of the Cray Gemini interconnect for PGAS languages and comparison with MPI. *ACM SIGMETRICS Performance Evaluation Review*, 40(2), (September 2012), 92-98.
- [7] Lawson, C. L., Hanson, R. J., Kincaid, D. R., and Krogh, F. T. 1979. Basic linear algebra subprograms for Fortran usage. *ACM Transactions on Mathematical Software (TOMS)*, 5(3), (Sept. 1979), 308-323.
- [8] Dongarra, J. J., Du Croz, J., Hammarling, S., and Duff, I. S. 1990. A set of level 3 basic linear algebra subprograms. *ACM Transactions on Mathematical Software (TOMS)*, 16(1), (March 1990), 1-17.
- [9] Anderson, E., Bai, Z., Bischof, C., Blackford, S., Demmel, J., Dongarra, J., Du Croz, J., Greenbaum, A., Hammarling, S., McKenney, A., Sorensen, D.. 1999. *LAPACK Users' Guide*. Vol. 9. SIAM.
- [10] Blackford, L. S., Choi, J., Cleary, A., D'Azevedo, E., Demmel, J., Dhillon, I., Dongarra, J., Hammarling, S., Henry, G., Petitet, A., Stanley, K., Walker, D., and Whaley, R. C. 1997. *ScaLAPACK Users' Guide*. Vol. 4. SIAM.
- [11] Braam, P. J. 2004. *The Lustre storage architecture*. Cluster File Systems, Inc. (<http://www.clusterfs.com>)
- [12] Schmuck, F. B., and Haskin, R. L. 2002. GPFS: A Shared-Disk File System for Large Computing Clusters. In *FAST* (Vol. 2, p. 19). (January 2002).
- [13] IBM Platform LSF (<http://www-03.ibm.com/systems/platformcomputing/products/lsf/>).
- [14] Univa Grid Engine Software (<http://www.univa.com/products/grid-engine.php>).
- [15] Open Grid Scheduler/Grid Engine (<http://gridscheduler.sourceforge.net/>).
- [16] The Son of Grid Engine project (<https://arc.liv.ac.uk/trac/SGE>).
- [17] Jette, M. A., Yoo, A. B., and Grondona, M. 2003. Slurm: Simple linux utility for resource management. 9th Workshop on Job Scheduling Strategies for Parallel Processing. (Seattle, WA., June 2003)
- [18] Slurm workload Manager (<http://slurm.schedmd.com/slurm.html>).
- [19] Luszczek, P. R., Bailey, D. H., Dongarra, J. J., Kepner, J., Lucas, R. F., Rabenseifner, R., and Takahashi, D. 2006. The HPC Challenge (HPCC) benchmark suite. In *Proceedings of the 2006 ACM/IEEE conference on Supercomputing* (p. 213). ACM. (November 2006)
- [20] Codd, E. 1970. A Relational Model of Data for Large Shared Data Banks, *Communications of the ACM* (Association for Computing Machinery) 13 (6) (June 1970), 377-387
- [21] Stonebraker, M., Held, G., Wong, E., and Kreps, P. 1976. The design and implementation of INGRES, *ACM Transactions on Database Systems (TODS)*, Volume 1 Issue 3 (Sep 1976), Pages 189-222.

- [22] Chang, F., Dean, J., Ghemawat, S., Hsieh, W., Wallach, D., Burrows, M., Chandra, T., Fikes, A., and Gruber, R. 2008. Bigtable: A Distributed Storage System for Structured Data. *ACM Transactions on Computer Systems*, Volume 26 Issue 2 (June 2008).
- [23] DeCandia, G., Hastorun, D., Jampani, M., Kakulapati, G., Lakshman, A., Pilchin, A., Sivasubramanian, S., Voshall, P., and Vogels, W. 2007. Dynamo: amazon's highly available key-value store. *Symposium on Operation Systems Principals (SOSP)*, (Stevenson, WA., December 2007)
- [24] Reuther, A., Currie, T., Kepner, J., Kim, H. G., McCabe, A., Moore, M. P., and Travinin, N. (2004). LLGrid: Enabling on-demand grid computing with gridmatlab and pmatlab. *High Performance Embedded Computing workshop*, (Lexington, MA., Sep 2004)
- [25] Bliss, N., Bond, R., Kim, H., Reuther, A., and Kepner, J. 2006. *Interactive Grid Computing at Lincoln Laboratory*, Lincoln Laboratory Journal, Volume 16, Number 1 (2006).
- [26] Byun, C., Arcand, W., Bestor, D., Bergeron, W., Hubbell, M., Kepner, J., McCabe, A., Michaleas, P., Mullen, J., O'Gwynn, D., Prout, A., Reuther, A., Rosa, A., and Yee, C. 2012. Driving Big Data With Big Compute. *IEEE High Performance Extreme Computing Conference (HPEC)* (Waltham, MA., Sep 10-12, 2012).
- [27] Kepner, J., Arcand, W., Bestor, D., Bergeron, B., Byun, C., Gadepally, V., Hubbell, M., Michaleas, P., Mullen, J., Prout, A., Reuther, A., Rosa, A. and Yee, C. 2014. Achieving 100,000,000 database inserts per second using Accumulo and D4M. *IEEE High Performance Extreme Computing Conference (HPEC)*, (Waltham, MA. September 2014).
- [28] Prout, A., Kepner, J., Michaleas, P., Arcand, W., Bestor, D., Bergeron, B., Byun, C., Edwards, L., Gadepally, V., Hubbell, M., Mullen, J., Rosa, A., Yee, C., and Reuther, A. 2015. Enabling On-Demand Database Computing with MIT SuperCloud Database Management System, *IEEE High Performance Extreme Computing (HPEC)* (Waltham, MA., September 2015, accepted)
- [29] Elmore, A., Duggan, J., Stonebraker, M., Vartak, M., Madden, S., Gadepally, V., Kepner, J., Mattson, T., Parhurst, J., Papadopoulos, S., Tatbul, N., Balazinska, M., Howe, B., Heer, J., Maier, D., Kraska, T., Cetintemel, U., Zdonik, S. 2015. A Demonstration of the BigDAWG Multi-Database System, *Very Large Data Bases (VLDB)* (Kohala Coast, Hawaii, August 31 – September 4, 2015)
- [30] Kepner, J., Anderson, C., Arcand, W., Bestor, D., Bergeron, W., Byun, C., Hubbell, M., Michaleas, P., Mullen, J., O'Gwynn, D., Prout, A., Reuther, A., Rosa, A., Yee, C. 2013. D4M 2.0 Schema: A General Purpose High Performance Schema for the Accumulo Database, *IEEE High Performance Extreme Computing (HPEC)* (Waltham, MA., September 2013)
- [31] Gadepally, V., Kepner, J., Arcand, W., Bestor, D., Bergeron, B., Byun, C., Edwards, L., Hubbell, M., Michaleas, P., Mullen, J., Prout, A., Rosa, A., Yee, C., and Reuther, A. 2015. D4M: Bringing Associative Arrays to Database Engines, *IEEE High Performance Extreme Computing (HPEC)* (Waltham, MA., September 2015, accepted)
- [32] Kepner, J., Arcand, W., Bergeron, W., Bliss, N., Bond, R., Byun, C., Condon, G., Gregson, K., Hubbell, M., Kurz, J., McCabe, A., Michaleas, P., Prout, A., Reuther, A., Rosa, A., and Yee, C. 2012. Dynamic distributed dimensional data model (D4M) database and computation system. In *Acoustics, Speech and Signal Processing (ICASSP), 2012 IEEE International Conference on* (pp. 5349-5352). (Kyoto, Japan, March 25-30, 2012)
- [33] Kepner, J., Gadepally, V., Michaleas, P., Schear, N., Varia, M., Yerukhimovich, A., and Cunningham, R. K. 2014. Computing on masked data: a high performance method for improving big data veracity. *IEEE High Performance Extreme Computing Conference (HPEC)* (Waltham, MA., September 2014).
- [34] Hosbson, H. 2012. The real Tron: IT security as a shoot 'em up. *New Scientist*, (October 3, 2012).
- [35] Hubbell, M., Moran, A., Arcand, W., Bestor, D., Bergeron, B., Byun, C., Gadepally, V., Michaleas, P., Mullen, J., Prout, A., Reuther, A., Rosa, A., Yee, C., and Kepner, J. 2015. Big Data Strategies for Data Center Infrastructure Management Using a 3D Gaming Platform. *IEEE High Performance Extreme Computing Conference (HPEC)* (Waltham, MA., September 2015, accepted).
- [36] Dean, J., and Ghemawat, S. 2004. MapReduce: Simplified Data Processing on Large Clusters. *Proceedings of the 2004 OSDI Conference*. (San Francisco, CA., December 2004)
- [37] Apache Hadoop 1.2.1 Documentation: HDFS (http://hadoop.apache.org/docs/r1.2.1/hdfs_design.html).
- [38] Apache Hadoop (<http://hadoop.apache.org/>).
- [39] Apache Hadoop 1.2.1 Documentation: Hadoop Streaming (<http://hadoop.apache.org/docs/r1.2.1/streaming.html>).
- [40] Swartz, F. 2011. A word frequency count example written in Java (<https://code.google.com/p/nealsproject/source/browse/FHXExtraction/src/wordcomparison/?r=38>).