

AWARD NUMBER: W81XWH-15-1-0297

TITLE: The Role of Cyclin D1 in the Chemoresistance of Mantle Cell Lymphoma

PRINCIPAL INVESTIGATOR: Vu Ngo

CONTRACTING ORGANIZATION: City Of Hope Beckman Research Institute
Duarte, CA 91010-3000

REPORT DATE: September 2017

TYPE OF REPORT: Annual

PREPARED FOR: U.S. Army Medical Research and Materiel Command
Fort Detrick, Maryland 21702-5012

DISTRIBUTION STATEMENT: Approved for Public Release;
Distribution Unlimited

The views, opinions and/or findings contained in this report are those of the author(s) and should not be construed as an official Department of the Army position, policy or decision unless so designated by other documentation.

REPORT DOCUMENTATION PAGE

Form Approved
OMB No. 0704-0188

Public reporting burden for this collection of information is estimated to average 1 hour per response, including the time for reviewing instructions, searching existing data sources, gathering and maintaining the data needed, and completing and reviewing this collection of information. Send comments regarding this burden estimate or any other aspect of this collection of information, including suggestions for reducing this burden to Department of Defense, Washington Headquarters Services, Directorate for Information Operations and Reports (0704-0188), 1215 Jefferson Davis Highway, Suite 1204, Arlington, VA 22202-4302. Respondents should be aware that notwithstanding any other provision of law, no person shall be subject to any penalty for failing to comply with a collection of information if it does not display a currently valid OMB control number. **PLEASE DO NOT RETURN YOUR FORM TO THE ABOVE ADDRESS.**

1. REPORT DATE September 2017		2. REPORT TYPE Annual		3. DATES COVERED 09/01/2016 – 08/31/2017	
4. TITLE AND SUBTITLE The Role of Cyclin D1 in the Chemoresistance of Mantle Cell Lymphoma				5a. CONTRACT NUMBER	
				5b. GRANT NUMBER W81XWH-15-1-0297	
				5c. PROGRAM ELEMENT NUMBER	
6. AUTHOR(S) Vu Ngo E-Mail: vngo@coh.org				5d. PROJECT NUMBER	
				5e. TASK NUMBER	
				5f. WORK UNIT NUMBER	
7. PERFORMING ORGANIZATION NAME(S) AND ADDRESS(ES) City of Hope Beckman Research Institute 1500 East Duarte Road Duarte, CA 91010-3000				8. PERFORMING ORGANIZATION REPORT NUMBER	
9. SPONSORING / MONITORING AGENCY NAME(S) AND ADDRESS(ES) U.S. Army Medical Research and Materiel Command Fort Detrick, Maryland 21702-5012				10. SPONSOR/MONITOR'S ACRONYM(S)	
				11. SPONSOR/MONITOR'S REPORT NUMBER(S)	
12. DISTRIBUTION / AVAILABILITY STATEMENT Approved for Public Release; Distribution Unlimited					
13. SUPPLEMENTARY NOTES					
14. ABSTRACT Mantle cell lymphoma (MCL) is an aggressive B-cell malignancy characterized by over-expression of the cell cycle regulatory protein cyclin D1 (CCND1). Increased CCND1 expression levels are strongly associated with shorter patient survival related to chemoresistance, but little is known about the contribution of CCND1 to the resistant nature of MCL. On the basis of our preliminary data, we <i>hypothesize</i> that cyclin D1 plays a genome protective role through regulating expression of <i>CDK5RAP3</i> (C53), which encodes a putative tumor suppressor known to antagonize the DNA checkpoint kinase CHEK1. We test this hypothesis by focusing on the following <i>specific aims</i> : 1) determine the effect of C53 depletion or overexpression on CCND1 knockdown phenotypes; 2) determine the role of CCND1 in regulating C53 expression. This report describes additional results from specific aim 1 and partial results from specific aim 2. We have found that C53 overexpression increases DNA damage in CCND1-depleted MCL cells, but is not sufficient to affect ATR and CHEK1 signaling. In addition, using a C53 reporter assay, we found that CCND1 can directly interact with and negatively regulate C53 promoter activity.					
15. SUBJECT TERMS Mantle cell lymphoma, cyclin D1, chemoresistance, CDK5RAP3					
16. SECURITY CLASSIFICATION OF:			17. LIMITATION OF ABSTRACT	18. NUMBER OF PAGES	19a. NAME OF RESPONSIBLE PERSON
a. REPORT	b. ABSTRACT	c. THIS PAGE			19b. TELEPHONE NUMBER (include area code)
Unclassified	Unclassified	Unclassified	Unclassified	23	USAMRMC

Table of Contents

	<u>Page</u>
1. Introduction.....	2
2. Keywords.....	2
3. Accomplishments.....	2
4. Impact.....	4
5. Changes/Problems.....	4
6. Products.....	4
7. Participants & Other Collaborating Organizations.....	5
8. Special Reporting Requirements.....	6
9. Appendices.....	6

1 INTRODUCTION:

The proposed research seeks to understand the molecular mechanism underlying the resistant nature of mantle cell lymphoma (MCL), an aggressive and incurable B-cell malignancy that is frequently refractory and relapsed to conventional chemotherapy. MCL is characterized by over-expression of the cell cycle regulatory protein cyclin D1 (CCND1). Increased CCND1 expression levels are strongly associated with shorter patient survival related to chemoresistance, but little is known about the contribution of CCND1 to the resistant nature of MCL. In preliminary studies, we found that depletion of CCND1 increased DNA damage and sensitized MCL cells to chemotherapeutic agents. We also found that CCND1 depletion led to increased transcription of *CDK5RAP3* and cytotoxicity of CCND1-depleted cells can be rescued by *CDK5RAP3* depletion. *CDK5RAP3* encodes a putative tumor suppressor known to antagonize the DNA checkpoint kinase CHEK1. The *goal* of the project is to elucidate the genome-protective role of CCND1 through regulation of *CDK5RAP3* expression. To accomplish this goal, we will focus on the following *specific aims*: 1) determine the effect of *CDK5RAP3* depletion or overexpression on CCND1 knockdown phenotypes; 2) determine the role of CCND1 in regulating *CDK5RAP3* expression. During the last 2016 reporting period, we have reported a role for CCND1 in maintaining the genome integrity and survival of MCL (Mohanty S. et al. *Leukemia & Lymphoma*, 2016). In the current reporting period, we have continued to elucidate the mechanisms of CCND1 in mediating therapy resistance in MCL, which has resulted in another publication from our group (Mohanty A. et al. *Oncotarget*, 2016). Below is the summary of our current progress and accomplishments.

2 **KEYWORDS:** Mantle cell lymphoma, cyclin D1, chemoresistance, DNA damage, *CDK5RAP3*, CHEK1

3 ACCOMPLISHMENTS:

What were the major goals of the project?

As stated in the last progress report, our goals in this reporting period are as follows.

Determine whether CDK5RAP3 (C53) overexpression enhances toxicity of CCND1 knockdown (months 13-18). Since overexpression of isoform B or E does not induce apoptosis or increase sensitivity to cytotoxic agents, we will repeat these experiments in the context of CCND1 knockdown. We expect that overexpression of C53 isoforms would enhance cytotoxicity of CCND1 KD and increase sensitivity of CCND1 KD cells to DNA damaging agents. We will also determine whether overexpressed C53 isoforms further disrupt ATR and CHEK1 signaling in CCND1 KD cells.

Determine whether CCND1 regulates C53 transcription (months 18-24).

- Generate UPN-1 cell lines that express either Flag-tagged CCND1 or empty vector control and perform chromatin immunoprecipitation (ChIP) with anti-Flag antibody.
- Use quantitative PCR with *C53 promoter*-specific primers to detect the *C53* promoter DNA in immunoprecipitates generated above.
- Assess *C53* transcriptional activity using a *C53* promoter-luciferase reporter system.
- Determine whether CCND1 over-expression suppresses the reporter activity by co-expressing the dual-luciferase reporter constructs (both *C53* promoter-firefly luciferase and control-Renilla luciferase) with increasing amount of CCND1-expressing vector in HEK-293 cells.

What was accomplished under these goals?

C53 overexpression increases DNA damage in CCND1-depleted MCL cells. We previously reported that overexpression of C53 isoforms did not cause cell death or an increase in sensitivity to cytotoxic agents (2016 progress report). However, it is possible that overexpression of C53 alone is not sufficient to phenocopy the effect of CCND1 knockdown. Therefore, we performed an alternative experiment in which C53 is overexpressed in a CCND1-depleted background and assessed whether this condition would enhance cytotoxicity in MCL

cells. Figure 1 shows that overexpression of C53 in CCND1-depleted UPN-1 cells results in increased DNA damage as detected by upregulation of gamma-H2AX signals. However, we did not observe significant changes in phosphorylation activity of ATR and CHEK1. These data indicate that although increased C53 expression appears to enhance DNA damage in CCND1-depleted MCL cells, it is insufficient to affect ATR and CHEK1 phosphorylation.

Construction of the C53 promoter-luciferase reporter. In order to evaluate effects of CCND1 on C53 transcription, we cloned a *firefly* luciferase gene downstream of the C53 promoter, a 1 kb DNA sequence isolated from genomic DNA of Z-138 cells using PCR. We also cloned a *Renilla* luciferase gene downstream of a retroviral LTR promoter as a negative control. These constructs were sequence verified to confirm the presence of inserts.

CCND1 negatively regulates C53 promoter activity.

To assess the effect of CCND1 on C53 promoter activity, we first transduce the C53-luciferase reporter or *Renilla* luciferase control into UPN-1 cells that express an inducible CCND1 shRNA. After induction of CCND1 shRNA by doxycycline, luciferase activity was measured by a luminescence assay. Figure 2A shows that after doxycycline addition, the C53 promoter activity is increased at a modest level, but significantly. In contrast, CCND1 depletion does not affect *Renilla* luciferase activity, which is not under control by the C53 promoter (Figure 2B).

To further confirm the effect of CCND1 on C53 promoter activity, we co-expressed CCND1 with C53-luciferase or *Renilla* luciferase construct in HEK-293T cells and compared luciferase activity with those from an empty vector control. We found that overexpression of CCND1 decreased C53 promoter activity (Figure 3A) without affecting those from the *Renilla* luciferase control (Figure 3B). Altogether, these results indicate that CCND1 can directly interact with and negatively regulate the C53 promoter.

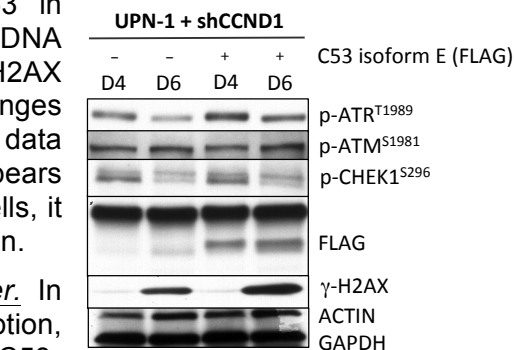
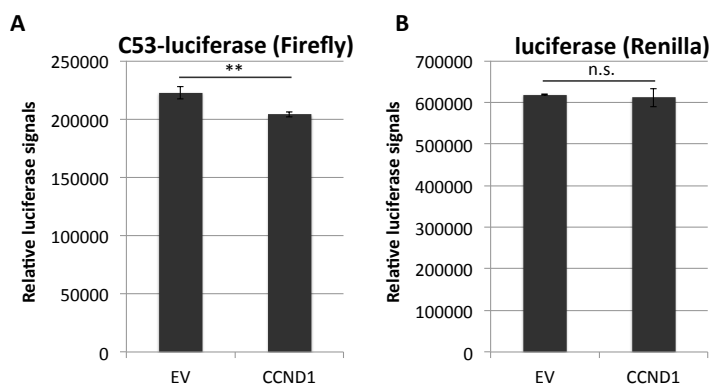


Figure 1. C53 overexpression increases DNA damage in CCND1 KD cells. shCCND1-expressing UPN-1 cells were transduced with a flag-tagged C53 isoform E and selected with puromycin. Immunoblot analysis was performed on day 4 and day 6 after selection with indicated antibodies.

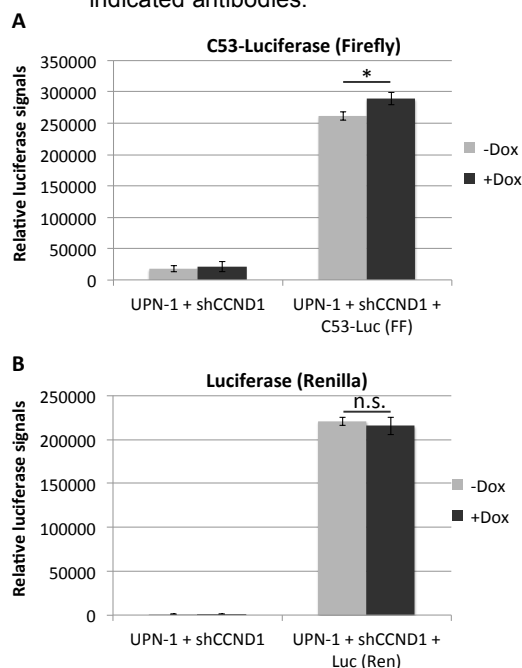


Figure 2. CCND1 depletion increases C53 promoter activity. shCCND1-expressing UPN-1 cells were transduced with C53 promoter-luciferase (Firefly, FF) (A) or with *Renilla* luciferase (Ren) (B). A luminescence assay was performed on day 2 after shCCND1 induction by doxycycline. Bar graphs are means of 3 technical repeats. Error bars, S.D. * $p < 0.05$ by a 2-tailed student t-test. n.s. not significant.

Figure 3. CCND1 overexpression decreases C53 promoter activity. HEK-293T cells were co-transfected with 1 μ g of empty vector (EV) or CCND1-expressing vector and 0.5 μ g of C53 promoter-luciferase (Firefly, FF) (A) or *Renilla* luciferase (Ren) (B). A luminescence assay was performed on day 2 after transfection. Bar graphs are means of 3 technical repeats. Error bars, S.D. ** $p < 0.01$ by a 2-tailed student t-test. n.s. not significant.

What opportunities for training and professional development has the project provided?

The PI, Vu Ngo, has participated in the following professional development activities:

Member by invitation, The Mantle Cell Lymphoma Consortium, Lymphoma Research Foundation (2017).

Giving lectures “B cell receptor signaling in normal and malignant B cell development” at the *AstraZeneca Hematology Learning Event*. Duarte, California. (5/22/2017 and 9/13/2017).

How were the results disseminated to communities of interest?

Nothing to Report.

What do you plan to do during the next reporting period to accomplish the goals?

Our plan for the next reporting period includes the original Specific Aim 2b (Task 2b in SOW). Specifically, we will:

2b. *Determine how CCND1 regulates C53 transcription* (months 24-36).

- Determine if HDAC1/3, SUV39 or HP1 binds the C53 promoter using ChIP assays.
- Determine whether knockdown of SUV39 or HDAC1/3 reduces histone H3K9 methylation or increases histone H3K27 acetylation, respectively, and whether these gene manipulations affect C53 expression.
- Determine whether CCND1 binds to HDAC1/3, SUV39 or HP1 using co-IP and whether changes in CCND1 expression affect the recruitment of these factors to the C53 promoter using ChIP assays.
- Use the C53 promoter reporter assay to compare effects of knockdown of CCND1 or of HDAC1/3, SUV39 or HP1 on the reporter activity.

4 IMPACT:

What was the impact on the development of the principal discipline(s) of the project?

Nothing to Report.

What was the impact on other disciplines?

Nothing to Report.

What was the impact on technology transfer?

Nothing to Report.

What was the impact on society beyond science and technology?

Nothing to Report.

5 CHANGES/PROBLEMS:

Changes in approach and reasons for change: N/A

Actual or anticipated problems or delays and actions or plans to resolve them: N/A

Changes that had a significant impact on expenditures: N/A

Significant changes in use or care of human subjects, vertebrate animals, biohazards, and/or select agents: N/A

6 PRODUCTS:

Publications, conference papers, and presentations

Journal publications.

Mohanty A, Sandoval N, Das M, Pillai R, Chen L, Chen RW, Amin HM, Wang M, Marcucci G, Weisenburger DD, Rosen ST, Pham LV, **Ngo VN**. CCND1 mutations increase protein stability and promote ibrutinib resistance in mantle cell lymphoma. *Oncotarget*. 7(45):73558-73572 (2016).

Acknowledgement of federal support: yes.

Conference papers

Atish Mohanty, Natalie Sandoval, Manasi Das, Hesham M. Amin, Guido Marcucci, Raju Pillai, Dennis D. Weisenburger, Steven T. Rosen, Lan V. Pham and **Vu N. Ngo**. CCND1 mutations increase protein stability and promote ibrutinib resistance in Mantle Cell Lymphoma. *Blood* (ASH Annual Meeting Abstracts), 2016; 128: 4094.

Presentations

Atish Mohanty, Natalie Sandoval, Manasi Das, Hesham M. Amin, Guido Marcucci, Raju Pillai, Dennis D. Weisenburger, Steven T. Rosen, Lan V. Pham and **Vu N. Ngo**. CCND1 mutations increase protein stability and promote ibrutinib resistance in Mantle Cell Lymphoma. *Blood* (ASH Annual Meeting Abstracts), 2016; 128: 4094.

Website(s) or other Internet site(s)

N/A

Technologies or techniques

N/A

Inventions, patent applications, and/or licenses

N/A

Other Products

N/A

7 PARTICIPANTS & OTHER COLLABORATING ORGANIZATIONS

What individuals have worked on the project?

Name:	<i>Vu Ngo</i>
Project Role:	<i>PI</i>
Researcher Identifier (e.g. ORCID ID):	
Nearest person month worked:	<i>4</i>
Contribution to Project:	<i>No change</i>

Name:	<i>Atish Mohanty</i>
Project Role:	<i>Postdoctoral Fellow</i>
Researcher Identifier (e.g. ORCID ID):	
Nearest person month worked:	<i>12</i>
Contribution to Project:	<i>No change</i>

Name:	<i>Natalie Sandoval</i>
Project Role:	<i>Research Associate</i>
Researcher Identifier (e.g. ORCID ID):	
Nearest person month worked:	<i>3</i>
Contribution to Project:	<i>No change</i>

Has there been a change in the active other support of the PD/PI(s) or senior/key personnel since the last reporting period?

Nothing to Report.

What other organizations were involved as partners?

Nothing to Report.

8 SPECIAL REPORTING REQUIREMENTS

COLLABORATIVE AWARDS: N/A

QUAD CHARTS: N/A

APPENDICES:

Reprints of manuscripts

Mohanty A, Sandoval N, Das M, Pillai R, Chen L, Chen RW, Amin HM, Wang M, Marcucci G, Weisenburger DD, Rosen ST, Pham LV, **Ngo VN**. CCND1 mutations increase protein stability and promote ibrutinib resistance in mantle cell lymphoma. *Oncotarget*. 7(45):73558-73572 (2016).

CCND1 mutations increase protein stability and promote ibrutinib resistance in mantle cell lymphoma

Atish Mohanty¹, Natalie Sandoval¹, Manasi Das¹, Raju Pillai³, Lu Chen⁴, Robert W. Chen⁵, Hesham M. Amin⁶, Michael Wang⁷, Guido Marcucci¹, Dennis D. Weisenburger³, Steven T. Rosen⁵, Lan V. Pham⁶, Vu N. Ngo^{1,2}

¹Division of Hematopoietic Stem Cell and Leukemia Research, Gehr Leukemia Center, Beckman Research Institute of City of Hope, Duarte, CA 91010, USA

²Toni Stephenson Lymphoma Center, Beckman Research Institute of City of Hope, Duarte, CA 91010, USA

³Department of Pathology, Beckman Research Institute of City of Hope, Duarte, CA 91010, USA

⁴Department of Information Sciences, Beckman Research Institute of City of Hope, Duarte, CA 91010, USA

⁵Department of Hematology and Hematopoietic Cell Transplantation, Comprehensive Cancer Center, Beckman Research Institute of City of Hope, Duarte, CA 91010, USA

⁶Department of Hematopathology, The University of Texas MD Anderson Cancer Center, Houston, TX 77030, USA

⁷Department of Lymphoma/Myeloma, The University of Texas MD Anderson Cancer Center, Houston, TX 77030, USA

Correspondence to: Vu N. Ngo, **email:** vnngo@coh.org

Keywords: cyclin D1, somatic mutations, ibrutinib resistance, mantle cell lymphoma

Received: April 29, 2016

Accepted: September 24, 2016

Published: October 04, 2016

ABSTRACT

Mantle cell lymphoma (MCL) is characterized by the t(11;14) translocation, which leads to deregulated expression of the cell cycle regulatory protein cyclin D1 (CCND1). Genomic studies of MCL have also identified recurrent mutations in the coding region of CCND1. However, the functional consequence of these mutations is not known. Here, we showed that, compared to wild type (WT), single E36K, Y44D or C47S CCND1 mutations increased CCND1 protein levels in MCL cell lines. Mechanistically, these mutations stabilized CCND1 protein through attenuation of threonine-286 phosphorylation, which is important for proteolysis through the ubiquitin-proteasome pathway. In addition, the mutant proteins preferentially localized to the nucleus. Interestingly, forced expression of WT or mutant CCND1 increased resistance of MCL cell lines to ibrutinib, an FDA-approved Bruton tyrosine kinase inhibitor for MCL treatment. The Y44D mutant sustained the resistance to ibrutinib even at supraphysiologic concentrations (5–10 μ M). Furthermore, primary MCL tumors with CCND1 mutations also expressed stable CCND1 protein and were resistant to ibrutinib. These findings uncover a new mechanism that is critical for the regulation of CCND1 protein levels, and is directly relevant to primary ibrutinib resistance in MCL.

INTRODUCTION

CCND1 is an important cell cycle regulator in many cell types. CCND1 binds and activates cyclin-dependent kinase (CDK) 4, which in turn phosphorylates and inactivates retinoblastoma (Rb) protein, leading to G1/S cell cycle progression [1, 2]. CCND1 accumulates in the nucleus during the G1 phase and translocates to the cytoplasm for degradation by the ubiquitin-proteasome system when cells enter the S phase [3, 4]. Cell cycle-dependent proteolysis of CCND1 requires phosphorylation

of threonine-286 (T286) residue, which is predominantly mediated by glycogen synthase kinase 3 beta (GSK3B) [5]. Other kinases including DYRK1B and p38 MAPK are also known to phosphorylate T286, also leading to ubiquitin-dependent degradation of CCND1 [6, 7].

Deregulated expression of CCND1 in cancer can be caused by several mechanisms. In mantle cell lymphoma (MCL), the CCND1 gene located on chromosome 11 is usually rearranged to a strong enhancer in the immunoglobulin heavy-chain (IGH) locus on chromosome 14, leading to increased CCND1 transcription and CCND1

protein levels [8, 9]. Increased CCND1 levels also occur due to genomic deletions or point mutations in the 3' UTR, which results in shorter, more stable transcripts [10, 11]. Experimental models that expressed a non-degradable CCND1 variant, in which T286 was substituted by alanine, or expression of an alternatively spliced CCND1b isoform, which lacks T286, have resulted in predominantly nuclear CCND1 expression and cellular transformation [12, 13]. In addition, aberrant activation of AKT and mTOR signaling results in down-regulation of GSK3B, also leading to reduced phosphorylation-dependent proteolysis and increased CCND1 protein levels [14].

Mantle cell lymphoma (MCL) is an incurable B-cell malignancy that frequently develops resistance to conventional chemotherapy and has a prognosis with a median overall survival of approximately 1–2 years after relapse [15, 16]. Recent treatment advances using the FDA-approved drug ibrutinib, which targets the B-cell antigen receptor (BCR) signaling molecule Bruton's tyrosine kinase (BTK), have produced durable responses in MCL [17]. However, one-third of MCL patients are ibrutinib-resistant, and even ibrutinib-sensitive patients eventually acquire resistance to the drug [17, 18]. The mechanisms underlying primary resistance to ibrutinib are not well understood. Recent studies have begun to provide some clues about potential mechanisms of primary ibrutinib resistance, including activation of the alternative NF- κ B [19], ERK1/2 or AKT signaling pathways [20]. Mechanisms of acquired resistance to ibrutinib in patients who initially responded to the drug but then relapsed have also been reported, including recurrent mutations of the enzyme active site in BTK (C481S) or its substrate phospholipase C gamma 2 (PLCG2) [18, 21, 22]. These studies suggest that multiple mechanisms likely contribute to ibrutinib resistance in MCL.

Recent large-scale genomic studies of MCL have identified a hotspot for recurring somatic mutations in exon 1 of *CCND1* in 18–35% of the cases, likely arising through somatic hypermutation [23–25]. However, little is known about the functional role of these mutations in MCL. This study investigated the functional consequences of *CCND1* mutation on protein stability and sensitivity of MCL cells to ibrutinib therapy. The three most frequent *CCND1* mutations (E36K, Y44D and C47S) were cloned and expressed in MCL cell lines or HEK-293T cells. CCND1 protein stability and interaction with GSK3B were evaluated by cyclohexamide treatment and immunoprecipitation, respectively. Subcellular localization of the mutant CCND1 protein was determined by cell fractionation and immunofluorescence. In addition, primary MCL tumors with *CCND1* mutations were examined for CCND1 protein stability and sensitivity to ibrutinib. These studies have uncovered an important role for *CCND1* mutations in deregulating protein turnover, and a potential role in resistance to ibrutinib in some MCL tumors.

RESULTS

CCND1 mutations increased CCND1 protein levels through defective proteolysis

To study the role of *CCND1* somatic mutations, the *CCND1* exon 1 of eight MCL cell lines was sequenced and found to have the germ-line sequence (data not shown). Therefore, site-directed mutagenesis was used to generate the three most frequent mutations, E36K, Y44D and C47S, as previously reported (Figure 1A) [19, 23–25]. Hemagglutinin (HA)-tagged wild type (WT) or mutant *CCND1* cDNA was cloned into a retroviral vector and expressed in the MCL cell lines UPN-1, Z-138 and JEKO-1. An empty vector was used as a negative control. After establishing stably transduced cells by hygromycin selection, equal numbers of cells from each culture were harvested and mRNA and total protein lysates were prepared. Anti-HA antibody was used to assess exogenous CCND1 protein expression by immunoblot analysis. All three mutants showed increased protein expression compared to the WT counterparts in all three MCL cell lines (Figure 1B, Supplementary Figure S1A). In Supplementary Figure S1A, JEKO-1 cells that expressed the non-degradable T286A *CCND1* mutant [5] were also included for comparison. Compared to WT, mutant CCND1 proteins did not affect the kinase function of CDK4, as determined by phosphorylation of the CDK4 substrate Rb in JEKO-1 cells (Supplementary Figure S1B). To determine whether increased protein expression was due to increased transcription, mRNA expressed from WT and mutant *CCND1* was compared by real-time quantitative PCR (qPCR) using primers specific for the exogenous *CCND1-HA* mRNA (Figure 1C). There was no significant increase in mutant mRNA levels compared to that of WT samples in both UPN-1 and Z-138 cells (Figure 1C). Next, we determined whether increased protein levels were due to deregulated protein turnover. We treated WT or mutant *CCND1*-expressing cells with cyclohexamide (CHX) to inhibit *de novo* protein synthesis, and CCND1 proteolysis was examined by immunoblot analysis. In both UPN-1 and Z-138 cells, while more than 50% of WT CCND1 was degraded as early as 90 min after CHX, little reduction in Y44D CCND1 levels was observed during the same period (Figure 1D, 1E). Similar stability was also observed the C47S mutant in UPN-1 cells under the same experimental conditions (Supplementary Figure S2). Taken together, we concluded that *CCND1* mutations increased protein, but not mRNA, levels, and this was likely due to defective proteolysis.

CCND1 mutations interfere with T286 phosphorylation

Since phosphorylation of T286 is required for proteasome-mediated CCND1 turnover [5], we next

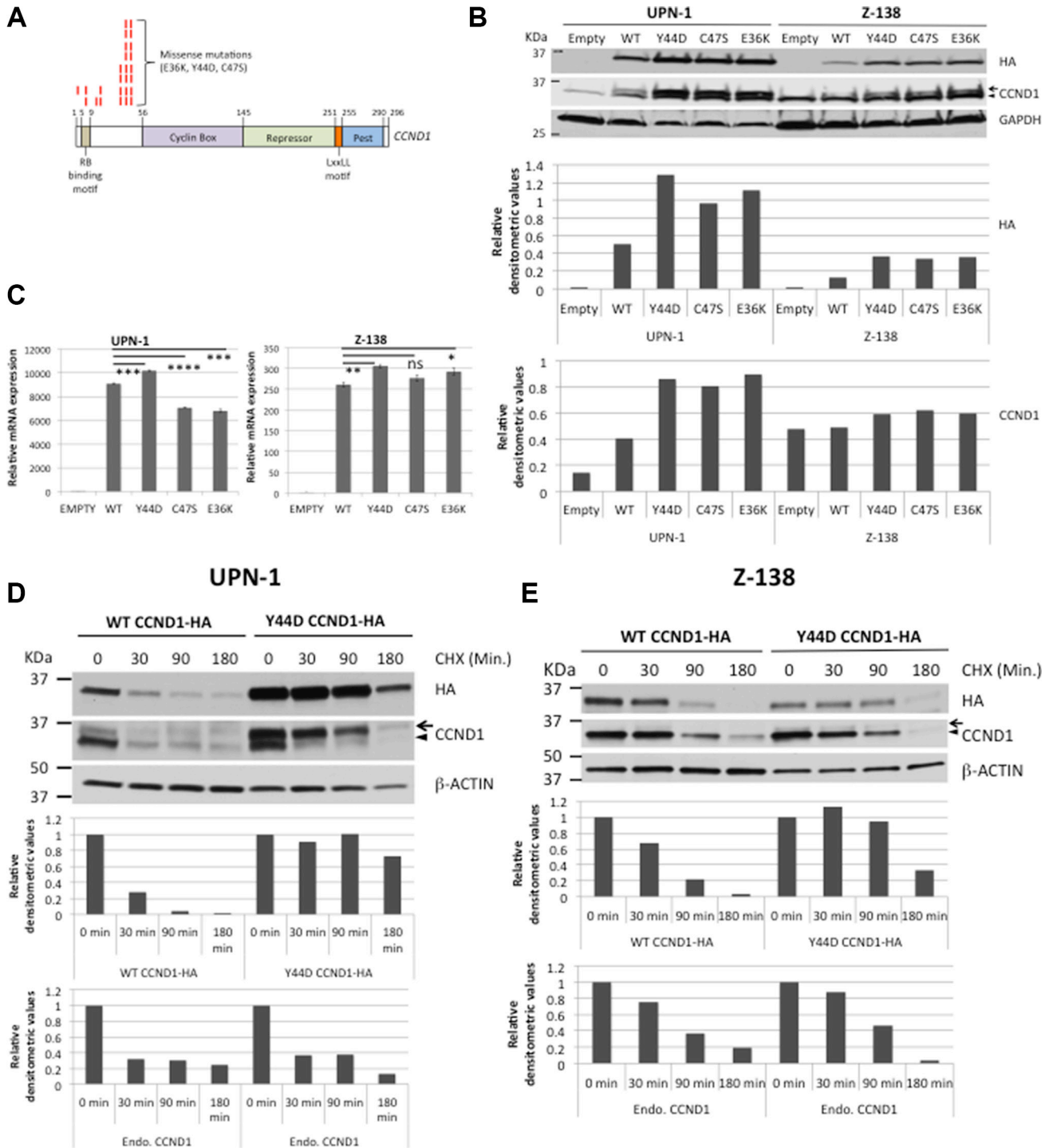


Figure 1: *CCND1* mutations increase protein levels. (A) Diagram shows recurring point mutations (red bars) in the N-terminus of *CCND1* protein. (B) Immunoblot analysis of WT and mutant *CCND1* expression. UPN-1 or Z-138 cells were transduced with WT or mutant *CCND1*-HA and selected for stable expression by hygromycin. Cell lysates (10 µg per lane) were separated by SDS-PAGE gel and immunoblotted with indicated antibodies. Arrow indicates a mobility shift of the *CCND1*-HA protein. Arrowhead indicates endogenous *CCND1*. Bar graphs below the immunoblot show relative densitometric values of indicated bands after normalization to GAPDH loading controls. (C) Quantitative PCR analysis of mRNA expression of WT and mutant *CCND1*. Cell lines generated as described in (B) and mRNAs were harvested for quantitative PCR analysis of *CCND1*-HA mRNA expression. Shown are the means of mRNA expression levels after normalization to GAPDH signals from four independent amplification experiments. Error bars, SD. *****P* < 0.0001; ****P* < 0.001; ***P* < 0.01; **P* < 0.05 by a two-tailed Student's *T*-test. (D, E) UPN-1 or Z138 cells expressing WT or Y44D *CCND1*-HA were treated with 10 µM of cyclohexamide (CHX) for indicated times and 10 µg of cell lysates per lane were prepared for immunoblot analysis with indicated antibodies. Arrow, *CCND1*-HA protein. Arrowhead, endogenous *CCND1*. Bar graphs below immunoblots in (D, E) show relative densitometric values of indicated bands from the blots after normalization to time zero control samples.

examined the effect of CCND1 mutations on this phosphorylation. Immunoblot analysis of T286 phosphorylation levels taken directly from on-going cell cultures was, however, confounded by the higher steady-state levels of mutant CCND1 proteins (Supplementary Figure S1C). As an alternative approach, we evaluated T286 phosphorylation in cells that were treated with CHX over night to allow complete degradation of CCND1, and then returned back to normal growth conditions for renewed protein synthesis. Under this experimental condition, T286 phosphorylation of newly synthesized Y44D CCND1 was markedly reduced in both UPN-1 and Z-138 cells as compared to phosphorylation of WT CCND1 (Figure 2A, 2B). Reduced T286 phosphorylation of Y44D CCND1 was not due to decreased protein levels, as the mutant protein levels accumulated faster than WT protein over the same time period after CHX treatment and release (Figure 2A, 2B). Because of the low expression levels of CCND1-HA in Z-138 cells (Figure 1B and Figure 2B), to enhance detection of T286 phosphorylation, CCND1-HA was immunoprecipitated with the HA-specific antibody followed by immunoblotting with the phospho-T286 CCND1 antibody. T286 phosphorylation levels were markedly reduced in both Y44D and C47S CCND1 immunoprecipitates, as compared to phospho-T286 signals on WT CCND1 (Figure 2C). These data indicate that these N-terminal *CCND1* mutations interfere with T286 phosphorylation at the C-terminus of CCND1.

Reduced T286 phosphorylation on mutant CCND1 prompted us to evaluate the interaction of the T286 phosphorylating enzyme GSK3B with WT and mutant CCND1 using the co-immunoprecipitation (co-IP) method. Using anti-HA antibody to immunoprecipitate CCND1-HA proteins in JEKO-1 cells, we detected little difference between WT and mutant proteins on binding with known interacting partners such as CDK4 (Figure 2D). In contrast, GSK3B was found to co-precipitate more with WT than with Y44D or C47S mutants (Figure 2D). Surprisingly, GSK3B was not detectable in T286A CCND1-HA pull-down despite the fact that this mutant had WT sequence at the N-terminus (Figure 2D). To confirm differential binding of WT and mutant CCND1 to GSK3B, we performed a reverse co-IP experiment using an anti-GSK3B antibody. Figure 2E shows that all three mutants co-migrated with GSK3B without reduced binding, which is inconsistent with the results observed in the HA pull-down experiments. Despite the apparent discrepancy between the forward and reverse IP experiments, which could reflect the accessibility of the C-terminally tagged HA epitope (see Discussion), our data appear to indicate little effect of Y44D and C47S mutations on CCND1-GSK3B interaction.

Because T286 phosphorylation increases the ubiquitination of CCND1 protein [5], we next determined whether *CCND1* mutations affected protein ubiquitination.

UPN-1 cells that stably express empty vector, WT or Y44D CCND1-HA were briefly treated with 5 nM of the proteasome inhibitor PS-341 (bortezomib) for two hours to enhance detection of ubiquitination. Treated cells were lysed in 2% SDS and heated at 95°C for five minutes to disrupt potential interactions of ubiquitin (Ub)-conjugated proteins that might co-precipitate with CCND1-HA. These lysates were subsequently immunoprecipitated with HA antibodies and Ub conjugates on CCND1 were examined by immunoblot analysis with anti-Ub antibody. As expected, WT CCND1 (both endogenous and exogenous protein) levels in the input accumulated after two hours of bortezomib treatment (Figure 2F). In contrast, little accumulation of mutant CCND1-HA was detected under the same treatment conditions (Figure 2F), consistent with deregulated proteolysis of mutant CCND1 as shown above. In the immunoprecipitates, more Y44D than WT CCND1 protein levels were detected, consistent with their respective CCND1-HA levels in the inputs (Figure 2F). However, Ub conjugate signals on Y44D CCND1 were less than that on WT CCND1 (Figure 2F). These results indicate that the Y44D mutation increases CCND1 protein stability through disruption of the Ub-proteasome pathway.

Y44D and C47S mutants preferentially localize to the nucleus

The T286A mutant protein was found predominantly in the nucleus because this mutation disrupted nuclear export of CCND1 [4]. To determine the cellular localization of CCND1 with N-terminal mutations, which also interfere with T286 phosphorylation, we performed cell fractionation experiments and compared WT and Y44D CCND1-HA protein levels in the nuclear extracts of UPN-1 cells. Cytosolic and nuclear fractions were confirmed by immunoblotting with the cytosolic markers β -ACTIN or GAPDH and nuclear marker histone H3. While WT and Y44D CCND1-HA proteins were detected in both the cytosolic and nuclear fractions, Y44D CCND1 protein levels were consistently higher than that of WT CCND1 in both fractions (Figure 3A). As an alternative approach, we used immunofluorescence to evaluate the subcellular distribution of WT and mutant CCND1-HA proteins expressed in HEK-293T cells, which were chosen for their large cytoplasmic surface area to facilitate data analysis. Using fluorescently labeled anti-HA antibody, we demonstrated that the Y44D and C47S mutant proteins preferentially localized to the nucleus as compared to WT CCND1 protein (Figure 3B). The T286A mutant was found predominantly in the nucleus, as expected from previous studies [4]. Together, we conclude that the Y44D and C47S *CCND1* mutation interferes with T286 phosphorylation and deregulates CCND1 nuclear export.

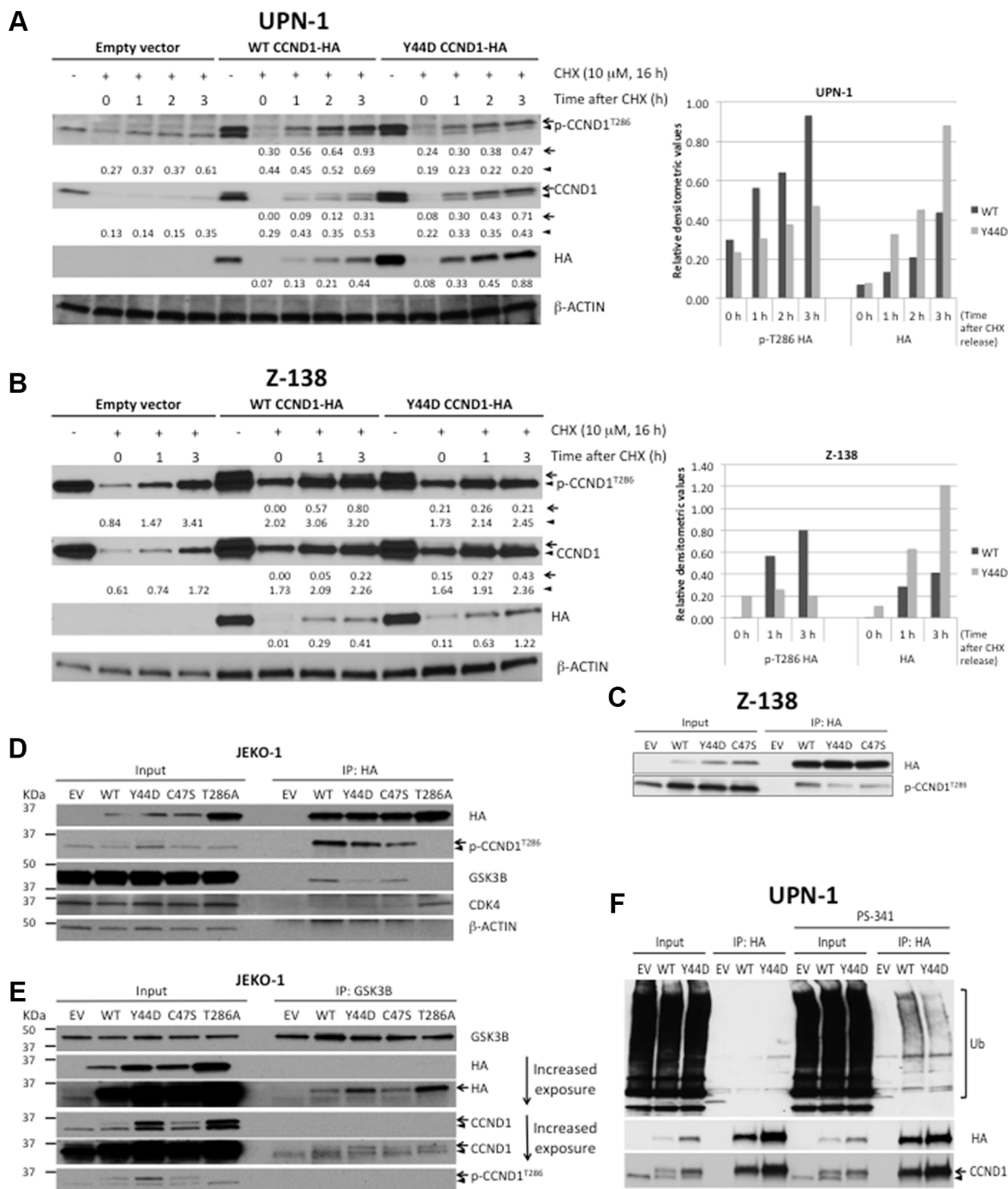


Figure 2: *CCND1* mutations interfere with T286 phosphorylation and protein ubiquitination. (A, B) UPN-1 or Z138 cells expressing WT, Y44D CCND1-HA, or an empty vector control were treated with 10 μ M of cyclohexamide (CHX) for 16 hours and released to normal growth medium for indicated times. Cell lysates (10 μ g per lane) were prepared for immunoblot analysis with indicated antibodies. Arrow, CCND1-HA protein. Arrowhead, endogenous CCND1. Numbers below the blots are relative densitometric values of corresponding bands after normalization to β -ACTIN loading controls. Graphical representation of selected densitometric values was shown in the bar graphs on the right. (C) Z-138 cells expressing an empty vector (EV), WT, or mutant CCND1-HA were immunoprecipitated with HA antibody and immunoblotted with indicated antibodies. Lysates before immunoprecipitation were used as input samples. (D, E) Analysis of mutant CCND1 interaction with GSK3B. (D) JEKO-1 cells expressing an empty vector (EV), WT, or mutant CCND1-HA were immunoprecipitated with HA antibody and immunoblotted with indicated antibodies. (E) JEKO-1 cell lines described in (D) were immunoprecipitated with GSK3B antibody and immunoblotted with indicated antibodies. Arrow, CCND1-HA protein. Arrowhead, endogenous CCND1. (F) Y44D *CCND1* mutation affects ubiquitin (Ub)-dependent degradation. UPN-1 cells that stably expressed an empty vector (EV) control, WT or Y44D CCND1-HA were treated with 5 nM of the proteasome inhibitor PS-341 for 2 h. Treated cells were lysed in 2% SDS and heated at 95°C for 5 min. Lysates were subsequently immunoprecipitated with HA antibodies and Ub conjugates on CCND1 were examined by immunoblot analysis with anti-Ub antibody.

CCND1 mutations promote resistance to ibrutinib

Previous studies showed that CCND1 was essential for MCL survival [26, 27], and that ibrutinib treatment decreased CCND1 protein levels in sensitive, but not in resistant, MCL cell lines [20]. These findings prompted us to determine a potential correlation between CCND1 levels

and ibrutinib sensitivity. Ibrutinib-sensitive Jeko-1 cells [19, 20], which stably expressed WT or mutant CCND1 (Supplementary Figure S1A), were treated with a single dose of increasing concentrations of ibrutinib for four days and analyzed for cell growth and apoptosis using flow cytometry. Ibrutinib significantly inhibited cell growth and induced apoptosis in a dose-dependent manner in control cells transduced with an empty vector. In contrast, WT and

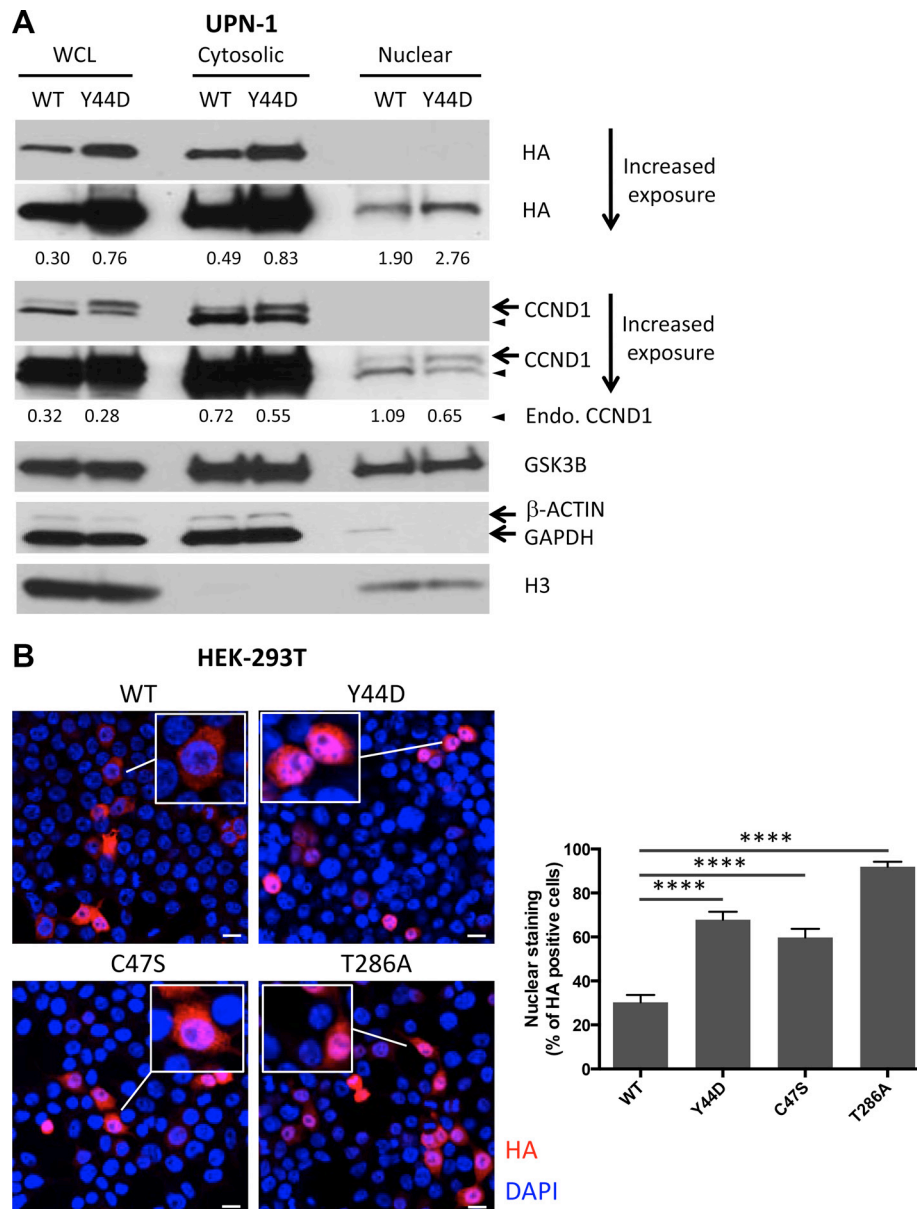


Figure 3: Subcellular localization of CCND1 mutants. (A) Cytosolic and nuclear extracts were prepared as described in Materials and Methods from UPN-1 cells that stably expressed WT or Y44D CCND1. The extracts (30 µg per lane) were immunoblotted with indicated antibodies. β-ACTIN or GAPDH and histone H3 were used to confirm cytosolic and nuclear fractions, respectively. Numbers below the blots are relative densitometric values of corresponding bands after normalization to β-ACTIN (for WCL and Cytosolic) or histone H3 (for Nuclear) loading controls. WCL, whole cell lysates; Endo., endogenous. (B) Subcellular distribution of WT and mutant CCND1-HA proteins, which were transiently expressed in HEK-293T cells, was evaluated by immunofluorescence. Shown are representative confocal immunofluorescence images of WT and mutant CCND1-expressing cells stained with anti-HA antibody (red) followed by nuclear staining with DAPI (blue). Scale bars, 20 µm. Bar graphs show the percentages of HA positive cells that have HA staining in the nucleus from two separate experiments. Error bars, SEM; *****P* < 0.0001 by a two-tailed Student's *T*-test. Approximately 150 HA positive cells from each group were counted.

mutant *CCND1*-expressing cells were more resistant up to 5 μ M of ibrutinib. At 10 μ M, ibrutinib was toxic to WT, E36K and C47S mutants, but less so to Y44D and T286A mutants (Figure 4A, 4B). To confirm that the rescue effect of exogenously expressed *CCND1* protein was specific to loss of BTK activity, we used a short-hairpin RNA (shRNA) to deplete BTK in JEKO-1 cells that expressed *CCND1* variants (Supplementary Figure S3A). As expected, BTK depletion was toxic in JEKO-1 cells that expressed an empty vector (Supplementary Figure S3B). However, BTK shRNA-mediated toxicity in JEKO-1 cells was rescued by exogenous WT or mutant *CCND1* (Supplementary Figure S3B), consistent with results shown in Figure 4A, 4B.

We next examined the effect of ibrutinib on expression of *CCND1* protein levels. JEKO-1 cells expressing WT or mutant *CCND1* were treated with 10 μ M of ibrutinib for up to six hours and *CCND1* levels were determined by immunoblot analysis. In a time-dependent manner, ibrutinib decreased the protein levels of WT and C47S mutant but not of Y44D mutant (Figure 4C), which appeared to correlate with the resistance of the Y44D mutant at high doses of the drug. These data indicate that increased *CCND1* levels promote ibrutinib resistance and certain *CCND1* mutations can provide sustained protection from high doses of ibrutinib.

Defective T286 phosphorylation-dependent degradation of the Y44D *CCND1* mutant and its protection of JEKO-1 cells against ibrutinib suggests a role for GSK3B in ibrutinib toxicity. To test this hypothesis, we used immunoblot analysis to evaluate GSK3B activity in JEKO-1 cells treated with ibrutinib. In a time-dependent manner, ibrutinib reduced the inhibitory serine-9 phosphorylation of GSK3B [28, 29], resulting in increased activity of this kinase (Figure 5A). Consistent with this finding, the activity of AKT, which phosphorylates GSK3B on serine-9 [30], was also reduced (Figure 5A). These results indicate that ibrutinib antagonizes the regulatory role of AKT, leading to re-activation of GSK3B which, in turn, mediates *CCND1* degradation. To confirm that ibrutinib toxicity was GSK3B dependent, JEKO-1 cells were treated with increasing doses of ibrutinib in the presence of the GSK3B inhibitor SB-216763 [31]. Compared to DMSO-treated controls, addition of SB-216763 at both 0.5 and 1 μ M partially rescued the cells from ibrutinib-mediated growth inhibition and apoptosis (Figure 5B, 5C). Treatment with the inorganic salt LiCl, which inhibits GSK3B [32], also rescued JEKO-1 cells from ibrutinib toxicity (Supplementary Figure S4). Thus, GSK3B kinase activity contributes to the cytotoxic effect of ibrutinib in JEKO-1 cells.

To further confirm the role of *CCND1* mutations in interference with GSK3B-mediated T286 phosphorylation, we next investigated whether these mutations rescue cells from pharmacological agents that target the AKT-GSK3B pathway such as the PI3K inhibitor CAL-101

(idelalisib) [33] and the mTOR kinase inhibitor PP242 [34]. As expected, these drugs reduced AKT activity, re-activated GSK3B by decreasing serine-9 phosphorylation, and down-regulated *CCND1* levels (Figure 5A). Similar to ibrutinib, both CAL-101 and PP242 demonstrated dose-dependent toxicity in control or WT *CCND1*-HA expressing JEKO-1 cells. However, overexpression of Y44D, C47S or T286A *CCND1* was sufficient to rescue the cells from growth inhibition and apoptosis induced by increasing concentrations of CAL-101 or PP242 (Figure 5D–5G). Altogether, these data indicate that *CCND1* mutations promote resistance to GSK3B activating agents such as ibrutinib, CAL-101 or PP242.

Analysis of *CCND1* mutations in primary MCL tumors

To investigate the role of *CCND1* mutations in primary MCL tumors, the sequence of *CCND1* exon 1 was determined by Sanger sequencing in 16 primary tumors. The tumor content in these samples was confirmed to have greater than 90% CD19+, CD5+ lymphoma cells by flow cytometry (data not shown). Three samples from patients who did not received ibrutinib therapy at the time of sample collection were found to carry single C47S or C47R heterozygous mutations (Figure 6A). Immunoblot analysis of seven samples with sufficient tumor materials showed that MCL tumors with *CCND1* mutations expressed more *CCND1* protein than WT samples, except for sample MCL 13 (Figure 6B). To examine whether increased *CCND1* protein levels in these mutant cases was due to the presence of more stable, 3' UTR-truncated transcripts, we used a previously-described RT-PCR assay [10] to compare full-length and 3' UTR-truncated mRNA levels in these samples. While Z-138 cells were confirmed to predominantly express 3' UTR-truncated *CCND1* mRNA as previously reported [10], all three *CCND1* mutated samples expressed the full-length mRNA, as did control HEK-293T cells (Figure 6C). One sample (MCL 2) with WT *CCND1* exon 1 was found to express UTR-truncated transcripts (Figure 6C). Therefore, we conclude that increased *CCND1* protein accumulation in the mutant cases was not due to expression of stable UTR-truncated *CCND1* mRNAs.

To examine whether the increased protein level in MCL tumors with *CCND1* mutations was due to deregulated protein turnover, MCL cells were treated with CHX and the rate of *CCND1* proteolysis was evaluated by immunoblot analysis. In contrast to WT *CCND1* samples examined (MCL 10, 13 and 15), which showed *CCND1* degradation after three hours in CHX, two of three *CCND1* mutant samples (MCL 11 and 47) had a prolonged half-life (Figure 6D). Interestingly, sample MCL 2, which expressed WT *CCND1*, also showed less *CCND1* degradation (Figure 6D), likely due to unknown mutations that deregulate *CCND1* proteolysis. Thus,

CCND1 mutations may affect protein stability in some primary MCL tumors and correlate with increased protein levels in these samples.

We next compared the sensitivity of MCL tumors that express WT or mutant *CCND1* to ibrutinib. In a dose-dependent manner, ibrutinib reduced cell viability in all three WT *CCND1* MCL samples (MCL 10, 13, and 15)

after 72 hours (Figure 6E). In contrast, two of the three mutated samples (MCL 11 and 47) were more resistant to ibrutinib. Interestingly, MCL 2 was also resistant to the drug, which appeared to correlate with increased *CCND1* protein stability observed in this sample. The difference in ibrutinib response between WT and mutated samples was not statistically significant, likely due to the small

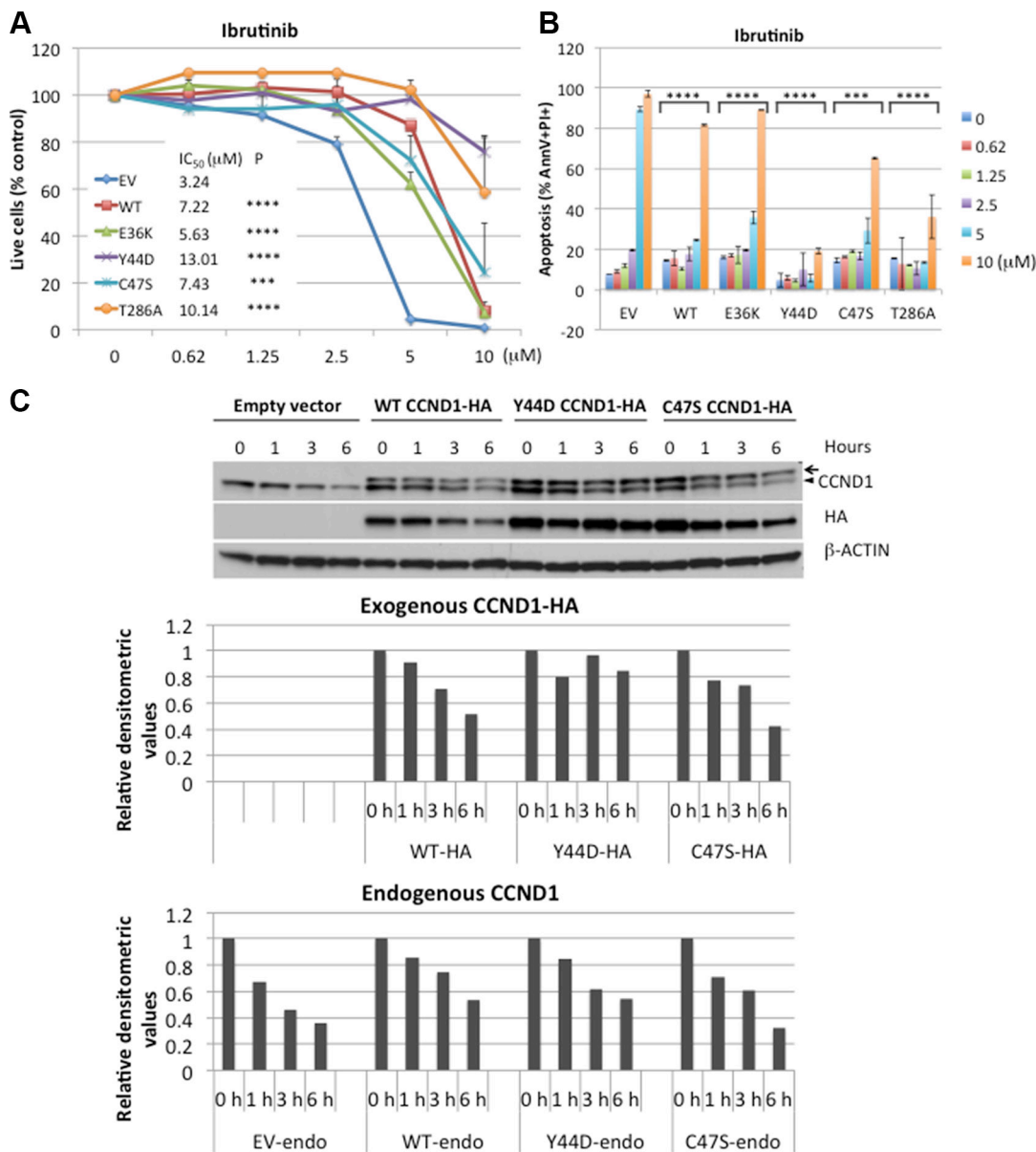


Figure 4: *CCND1* mutations promote resistance to ibrutinib. (A) JEKO-1 cells expressing an empty vector (EV), WT, or mutant *CCND1*-HA were treated with indicated doses of ibrutinib for four days and propidium iodide (PI)-negative (viable) cells were assessed by flow cytometry. Shown are PI negative fractions normalized to control untreated samples. Fifty percent inhibition concentration (IC₅₀) values were calculated by GraphPad Prism 7 software (GraphPad). (B) Apoptosis of JEKO-1 cells in the same experiment as described in A were assessed by Annexin V/PI staining on day 4. Shown are percentages of Annexin V+/PI+ cells. Line graphs or bar graphs show means of three independent experiments. Error bars, SD. Error bars where not visible fall within the points. *****P* < 0.0001, ****P* < 0.001 (two-way ANOVA). *P* values indicate significance levels for the effect of WT or mutants on ibrutinib sensitivity compared to empty vector (EV) control. (C) JEKO-1 cells expressing an empty vector (EV), WT, or mutant *CCND1*-HA were treated with 10 μM of ibrutinib for indicated times and 10 μg of cell lysates per lane were prepared for immunoblotting with indicated antibodies. Arrow, *CCND1*-HA protein. Arrowhead, endogenous *CCND1*. Bar graphs below the blot show relative densitometric values of indicated bands after normalization to time zero control samples.

sample size. However, there was a significant difference in response to ibrutinib between samples with different *CCND1* protein stability. These results indicate that *CCND1* mutations or other mechanisms that increase *CCND1* protein stability and/or levels contribute to the resistance of MCL tumors to ibrutinib.

DISCUSSION

High-throughput sequencing of the MCL genome has consistently revealed *CCND1* as the second most frequently mutated gene after the ataxia telangiectasia mutated (ATM) gene [23–25]. We found that these

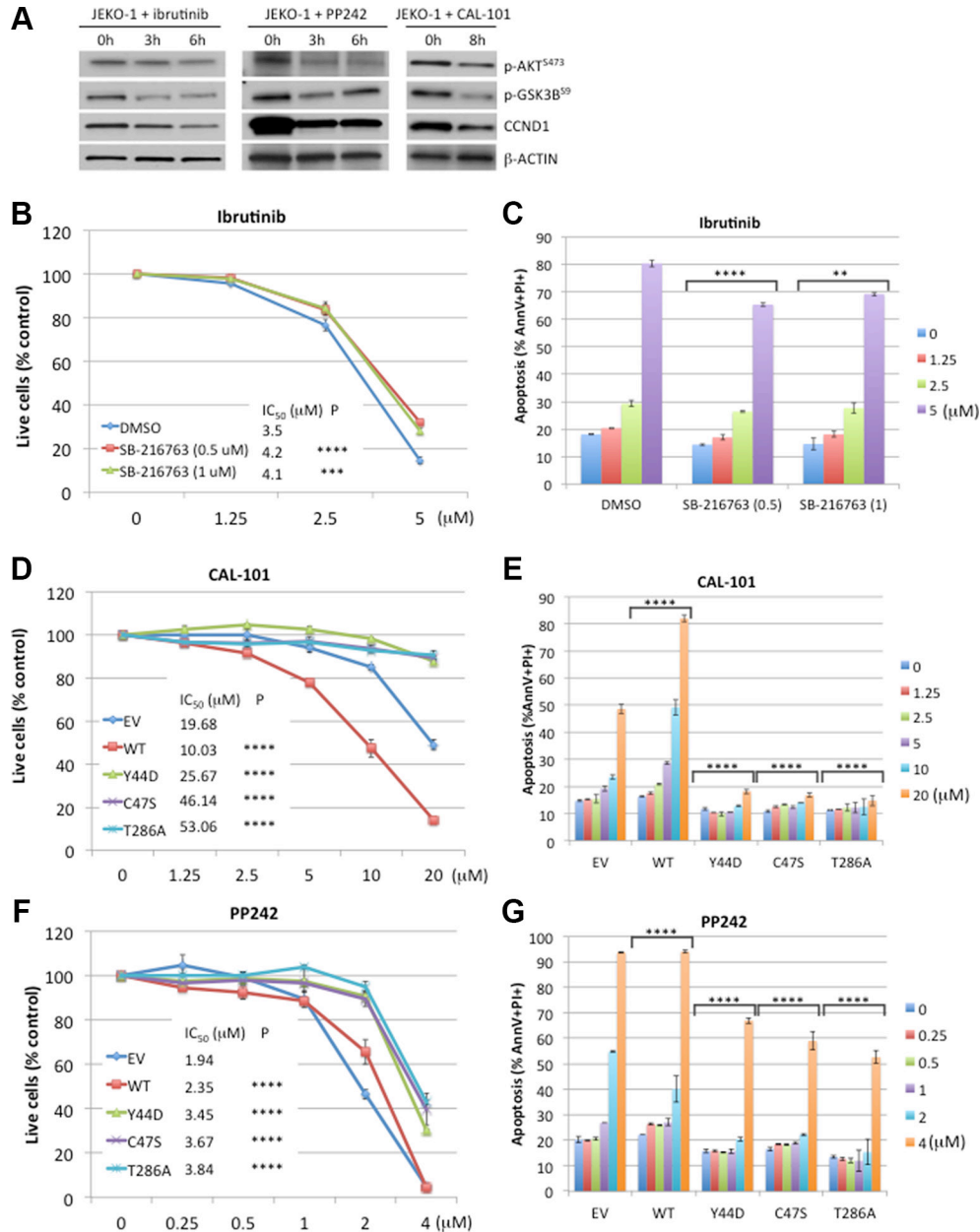


Figure 5: *CCND1* mutations promote resistance to CAL-101 and PP242. (A) Immunoblot analysis of JEKO-1 cells treated with ibrutinib (10 μM), PP242 (4 μM) or CAL-101 (10 μM) for indicated times and immunoblotted (30 μg of lysate per lane) with indicated antibodies. (B, C). SB-216763 rescues ibrutinib toxicity. JEKO-1 cells were co-treated with indicated doses of ibrutinib and 0.5 μM or 1 μM of SB-216763. Viable, PI-negative cells (B) or apoptotic cells (C) were assessed by flow cytometry on day 4. (D–G) JEKO-1 cells expressing an empty vector (EV), WT, or mutant *CCND1*-HA were treated with indicated doses of CAL-101 (D, E) or PP242 (F, G) and live cells (D, F) or apoptotic cells (E, G) were analyzed by flow cytometry on day 4. Shown in line graphs are PI negative fractions normalized to control untreated samples. Line graphs or bar graphs show means of three independent experiments. Error bars, SD. Error bars where not visible fall within the points. *****P* < 0.0001, ****P* < 0.001, ***P* < 0.01 (two-way ANOVA). *P* values indicate significance levels for the effect of SB-216763 (B, C), compared to DMSO, or of WT and mutants (D–G), compared to empty vector (EV) control, on sensitivity to increasing concentrations of the indicated drugs.

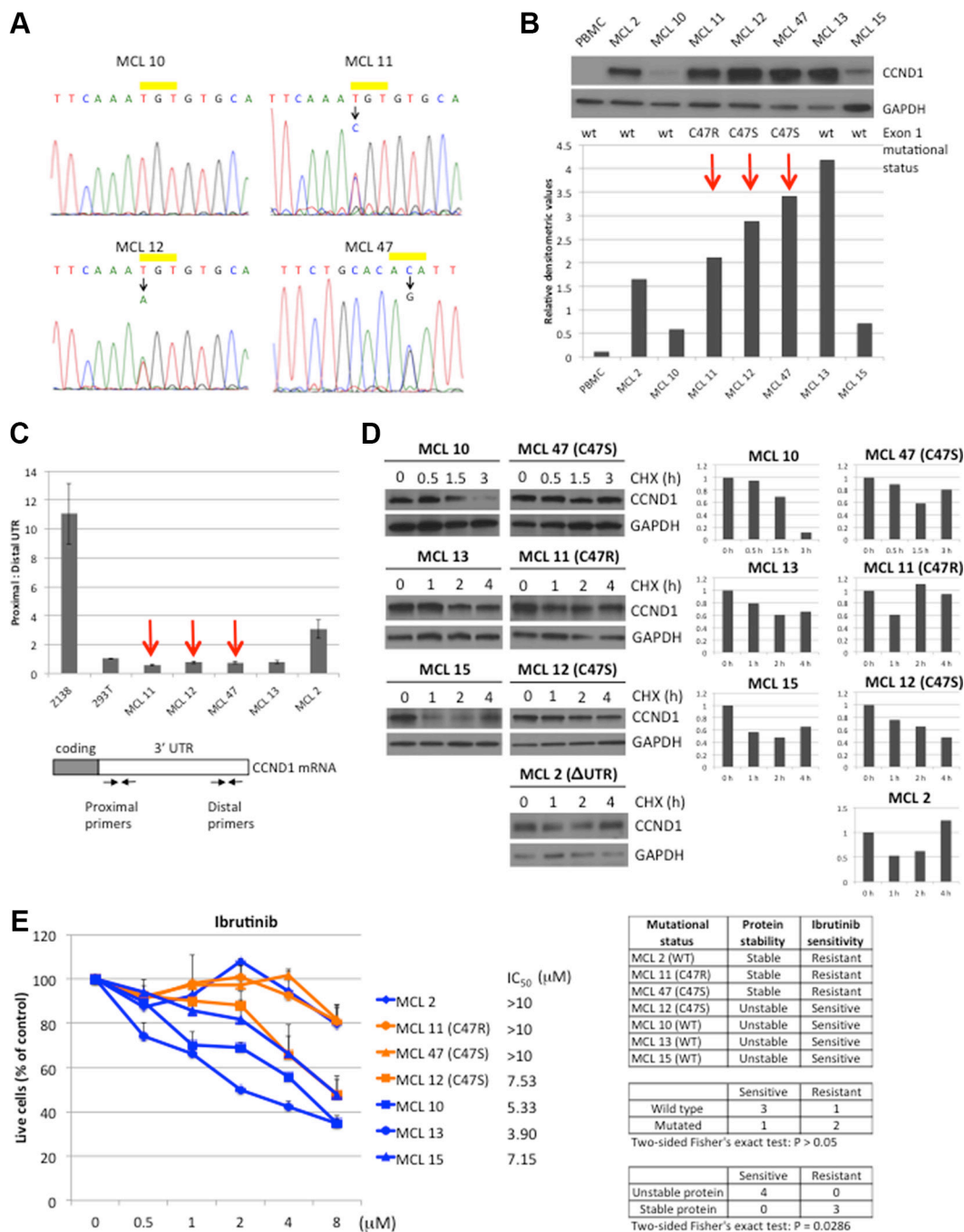


Figure 6: CCND1 mutations in primary MCL. (A) Sequencing chromatograms of CCND1 point mutations in MCL samples. WT and mutated CCND1 alleles on residue cysteine-47 (yellow bar) from MCL tumors 10, 11, 12 and 47 are shown. For MCL 47, complementary sequence from the reverse primer is shown. (B) CCND1 expression in MCL tumors. Lysates (10 µg per lane) from indicated MCL tumors were immunoblotted with indicated antibodies. Peripheral blood mononuclear cells (PBMC) were used as negative control for CCND1 expression. Bar graphs show relative densitometric values of CCND1 expression from the immunoblot after normalization to GAPDH loading control. Red arrows highlight the CCND1 mutated samples. (C) Analysis of CCND1 truncated 3'UTR transcript in MCL tumors. The relative abundance between the full-length and truncated 3'UTR was determined by using proximal and distal primers (see primer locations in the diagram of the CCND1 mRNA transcript). (D) CCND1 stability in MCL tumors. Indicated MCL tumors were treated with 10 µM of cyclohexamide (CHX) for indicated times and 10 µg of cell lysates were prepared for immunoblot analysis with indicated antibodies. Bar graphs show relative densitometric values of CCND1 expression from corresponding blots after normalization to GAPDH. (E) Sensitivity of MCL tumors to ibrutinib. Indicated MCL tumors were treated with indicated doses of ibrutinib for three days and metabolically active cells were assessed by CellTiter-Glo Luminescent assay (Promega). Shown are fractions of luminescence signals from metabolically active cells normalized to untreated samples. Line graphs show mean values from three independent experiments. Error bars, S.E.M. IC₅₀ values were calculated by GraphPad Prism 7 software. The table summarizes the ibrutinib response with respect to CCND1 mutation status or protein stability. Correlation of either mutation status or protein stability with ibrutinib sensitivity was analyzed by the two-sided Fisher's exact test.

recurrent mutations, which are located in the N-terminus of CCND1, interfere with T286 phosphorylation, leading to deregulated CCND1 turnover and increased protein levels. In addition, these mutations increased the resistance of MCL to ibrutinib, highlighting their relevance to this emerging therapy.

Many lines of evidence suggest that CCND1 translocation alone is not sufficient and additional genetic lesions are required for MCL development. For example, the Emu-CCND1 transgenic mouse, which mimics the t(11;14) translocation, developed lymphoma only after crossing with transgenic mice that expressed an established oncogene such as *MYC* [35, 36]. Alternatively, B-cell lymphoma also developed when crossing the Emu-CCND1 mouse with transgenic mice that had other genetic aberrations observed in MCL, such as BIM-deficient [37] or ATM-deficient mice [38]. Interestingly, the Emu-T286A CCND1 transgenic mice, which constitutively expressed nuclear mutant CCND1, developed lymphoma without introducing a second genetic hit [13]. Although the B-cell lymphomas that developed in these mice had a mature B-cell phenotype like human MCL, the T286A mutation has been observed only rarely in MCL and whether this mouse model recapitulates human MCL remains uncertain. Our data demonstrate that N-terminal *CCND1* mutations interfere with T286 phosphorylation and promote CCND1 nuclear localization, which are reminiscent of the T286A CCND1 mutant phenotype. The frequent occurrence of these N-terminal *CCND1* mutations indicates that defective T286 phosphorylation may be more common in MCL than previously thought. Our findings thus support the oncogenic role of defective T286 phosphorylation, as postulated by Diehl and colleagues [39].

How do N-terminal CCND1 mutations affect the C-terminal T286 phosphorylation? Our initial hypothesis was that these mutations may affect docking of GSK3B and, thus, subsequent phosphorylation. Although co-IP experiments using an anti-HA antibody showed less binding of GSK3B to Y44D and C47S mutants, reverse co-IP experiments using anti-GSK3B antibody did not confirm this result. In contrast, GSK3B pull-down showed little effect of Y44D or C47S mutants on interaction with GSK3B. An important clue from this apparent discrepancy between the forward and reverse IP experiments was the absence of GSK3B signals in the T286A-HA pull-down (Figure 2D). However, T286A-HA signals were readily detectable in the immunoprecipitates of GSK3B pull-down, which confirmed GSK3B-T286-HA interaction (Figure 2E). These observations indicate that, unlike in the WT CCND1-HA pull-down, the anti-HA antibody did not recognize the C-terminally tagged HA epitope of the T286A mutant in the complex with GSK3B. Therefore, we speculate that reduced GSK3B signals in the immunoprecipitates of Y44D or C47S pull-down, as compared to WT, may be due to reduced binding of the anti-HA antibody to the C-terminally tagged HA epitope in these mutants. Re-

cloning of CCND1 constructs with N-terminally tagged HA is, therefore, necessary to test this possibility and to clarify whether CCND1 mutations affect GSK3B docking.

Despite the efficacy of ibrutinib in MCL, one-third of the patients do not respond to this therapy and acquired resistance to this drug is almost universal [17, 40]. A better understanding of why some patients respond well, but others do not, is needed. Sustained PI3K/AKT signaling or increased activation of the alternative NF- κ B pathway have been proposed as potential mechanisms that may compensate for the BCR—BTK—NF- κ B axis, which is targeted by ibrutinib [19, 20]. Similar to agents that target AKT signaling (such as CAL-101 and PP242), ibrutinib can also inhibit AKT activity, leading to activation of GSK3B and increased phosphorylation-dependent proteolysis of CCND1. The N-terminal CCND1 mutations that increase protein stability by evading GSK3B-mediated phosphorylation provide another distinct mechanism of resistance to such therapies.

Two out of three MCL tumors with mutated *CCND1* were resistant to ibrutinib. However, sample MCL 12, which also carried the C47S mutation, was sensitive to this drug. The mutant CCND1 protein in this sample appeared less stable than CCND1 with the same mutation from sample MCL 47, as revealed by the CHX experiments (Figure 6D). In addition, although *in vitro* overexpression of C47S CCND1 was sufficient to confer ibrutinib resistance in JEKO-1 cells, protection from ibrutinib toxicity was less robust than the Y44D mutation. These observations suggest that *CCND1* mutations may provide different levels of protection from ibrutinib toxicity, depending on the cellular context and tumor heterogeneity. Conversely, sample MCL 2 had WT *CCND1* but was resistant to ibrutinib. Interestingly, this sample displayed more stable CCND1 protein, suggesting other mechanisms that may contribute to CCND1 stability in addition to the N-terminus point mutations. Because of the small sample size in the present study, further validation of our findings in more MCL tumors will be required to confirm the correlation between *CCND1* mutations and ibrutinib resistance.

In summary, these findings uncovered residues previously not known to play a role in the regulation of CCND1 turnover. Our data demonstrate that single N-terminal CCND1 mutations stabilize and increase protein levels, which contributes to ibrutinib resistance. This study suggests that *CCND1* mutations may be a useful biomarker for ibrutinib insensitivity. Further studies using a larger sample size are needed to evaluate this potential clinical utility.

MATERIALS AND METHODS

Cell lines and culture conditions

Human MCL lines UPN-1, Z-138 and JEKO-1 were kindly provided by Dr. Louis Staudt. UPN-1 cells were

confirmed to carry the cyclinD1/IGH fusion gene and other chromosomal rearrangements, as previously described [41], by metaphase fluorescence *in situ* hybridization (FISH) analysis (data not shown). Z-138 cells were confirmed to express truncated CCND1 3'UTR transcripts as described [10] (Figure 6C). JEKO-1 cells were not authenticated. Cells were cultured in RPMI-1640 medium (Life Technologies, Grand Island, NY) supplemented with 10% fetal bovine serum and penicillin/streptomycin and maintained in a humidified, 5% CO₂ incubator at 37°C.

Primary MCL preparation

Viable cryo-preserved MCL cells were obtained from the tumor bank of the Pathology Department of City of Hope as de-identified samples after approval by the Institutional Review Board. Frozen cells were briefly thawed in 37°C water bath, washed in RPMI-1640 medium and cultured in RPMI-1640 medium supplemented with 20% fetal bovine serum and 200 Kunits/ml of DNase I (Sigma, St. Louis, MO) for 15 minutes in 37°C CO₂ incubator followed by washing. Cells were recovered overnight in CO₂ incubator before experiments.

Antibodies and chemicals

The following antibodies were used: HA (C29F4), Histone H3, pCCND1-T286 (D29B3), GSK3B (D5C5Z), pS9-GSK3B and p-AKT S473 (Cell Signaling Technology, Danvers, MA), CDK4, CCND1(M20), ACTIN, GAPDH, (Santa Cruz, Dallas, TX), The following chemicals were used: cyclohexamide, Lithium chloride (LiCl) (Sigma, St. Louis, MO) SB-216763, CAL-101, PP242, PS-341 (Selleck Chemicals, Houston, TX). Ibrutinib was obtained from commercial sources (Selleck Chemicals or MedKoo Biosciences, Inc. Chapel Hill, NC) or from Craig Thomas (NCI, Bethesda, MD) as a gift. Ibrutinib from these sources was confirmed to have similar killing activity on JEKO-1 cells (data not shown).

Expression vectors

The retroviral expression vector pBMN-CCND1-HA-IRES-Hygro, encoding carboxy-terminus HA-tagged CCND1, was constructed by ligation of PCR-generated CCND1-HA products from the plasmid pRc/CMV-Cyclin D1 HA (Addgene plasmid # 8948, a gift from Philip Hinds) into the pBMN-IRES-Hygro vector (a gift from Gary Nolan) at XhoI and NotI restriction sites. CCND1-HA PCR products were generated using the following primer pairs: 5' TAGTAGctcgagCCG CCACCATGGAACACCAGCTCCTGTGC and 5' CT ACTAGCGGCCGCTCAGATATCGGCGTAGTC. E36K, Y44D and C47S *CCND1* mutations were generated by the Quickchange Site-directed mutagenesis kit (Stratagene, La Jolla, CA) using the plasmid template

pBMN-CCND1-HA-IRES-Hygro and primers as follows. E36K forward: 5' P-ATGCTGAAGGCGGAGAAGACC TGCGCGCCCT, E36K reverse: 5' P-GGCCCCGAGCAC CCGGTCGT, Y44D forward: 5' P-GCGCCCTCGGTGT CCGACTTCAAATGTGTGC, Y44D reverse: 5' P-GCA GGTCTCCTCCGCCTCAGCAT, C47S forward: 5' P-G TGTCTACTTCAAATCTGTGCAGAAGGAGGT, C47S reverse: 5' P-CGAGGGCGCGCAGGTCTCCTCCG. Mutations were confirmed by DNA sequencing. T286 *CCND1* mutation was derived from the plasmid pcDNA cyclin D1 HA T286A (Addgene plasmid #11182, a gift from Bruce Zetter) and subcloned into the pBMN-IRES-Hygro vector as described above.

DNA transfection and retroviral transduction

DNA transfection was performed by mixing DNA with Lipofectamine2000 (Life Technologies, Grand Island, NY) and following the manufacturer's instructions. For retroviral transduction, a retroviral vector and a mixture of helper plasmids for viral envelope and *gag/pol* were transfected into HEK293T cells using Lipofectamine 2000. Retroviral supernatants were harvested 48 hours after transfection and were used to transduce ecotropic receptor-expressing target cells by centrifugation at 1200 × g for one hour in 4 µg/ml polybrene.

Quantitative real-time PCR

SYBR® Green-based quantitative real-time PCR was performed using RT² SYBR® Green qPCR Mastermix (Qiagen, Valencia, CA) and a StepOnePlus Real-time PCR system (Life Technologies, Grand Island, NY). The following probes were used: CCND1 forward primer: 5' CGAGGAGGAGGAAGAGGAG. HA reverse primer: 5' GTAGTCCGGGACGTCGTA. GAPDH forward primer: 5' AAGGGCTCATGACCACAGTC. GAPDH reverse primer: 5' GGATGACCTTGCCCACAG. Relative mRNA expression was normalized to GAPDH signals and calculated using the ddCt method. Proximal and distal CCND1 UTR primers have been described previously [10]. BTK gene knockdown experiments using a previously validated shRNA sequence [42] (GCACAACTCTCCTACTATGA) were analyzed by the StepOnePlus Real-time PCR system using the Applied Biosystems probe BTK (Hs00975865_m1) and GAPDH (Hs02758991_g1).

Immunoblot and immunoprecipitation analyses

Cells were lysed in the presence of protease inhibitor cocktail (Sigma, St. Louis, MO) and Halt phosphatase inhibitor cocktail (Pierce Biotechnology, Rockford, IL) for 30 min. Lysates were cleared by centrifugation and protein concentrations were determined by BCA protein assay (Pierce Biotechnology, Rockford, IL).

Ten or 30 μg of lysates per lane were separated by 4–15% SDS-PAGE and immobilized on the nitrocellulose membranes (ThermoFisher, Waltham, MA) for immunoblotting. Immunoblot signals were developed by a chemiluminescent detection method (Pierce Biotechnology, Rockford, IL) and captured by standard autoradiographic films. Signal intensities were quantitated using the NIH Image J software (imagej.nih.gov).

For immunoprecipitation, cells were lysed at 4×10^7 cells/ml in IP buffer from Pierce Biotechnology (25 mM Tris•HCl pH 7.4, 150 mM NaCl, 1% NP-40, 1 mM EDTA, 5% glycerol), in presence of 1 mM PMSF, 10 mM glycerophosphate, $1\times$ concentration of Protease and Halt Phosphatase cocktail inhibitors for 30 min on ice. Lysates were cleared by centrifuging for 15 minutes at $14,000 \times g$ at 4°C . Five μg of IgG1 isotype control was mixed with 50 μl of 1:1 slurry of PBS and protein A agarose beads and the mixture was added to 1 ml of lysate followed by one-hour incubation on a rotating mixer at 4°C . Lysates were cleared again by centrifugation for one minute at $2400 \times g$ at 4°C . Supernatants were quantified for protein concentrations using the BCA protein assay. Approximately, 1.5 mg of lysate from each sample was incubated with 40 μl of 1:1 slurry of PBS and HA antibody (IgG1)-conjugated agarose beads (Sigma, St. Louis, MO) overnight on a rotating mixer at 4°C . Agarose beads were washed 4 times in 1 ml of PBS containing 0.5% NP40 for 10 min each and pelleted by centrifugation at $2400 \times g$ for 5 min. After discarding the supernatant, washed agarose beads were suspended in 100 μl of $1\times$ sample buffer containing 5 μl of beta-mercaptoethanol and heat denatured for 5 min at 95°C . Samples were separated on 10% polyacrylamide gels and transferred to nitrocellulose membranes for western blot analysis.

For IP of Ub-conjugated CCND1, cells were harvested, washed twice with cold PBS, and lysed in 2% sodium dodecyl sulfate (SDS), 150 mM NaCl, 10 mM Tris-HCl pH 8.0, and protease inhibitors at 95°C for 5 min then kept on ice for 10 min, as previously described [43]. The lysate was then diluted in IP buffer containing protease and phosphatase inhibitors at ratio 1:10 and incubated on ice for 30 min. Lysates were cleared by centrifuging for 15 min at $14,000 \times g$ at 4°C and used for immunoprecipitation as described above.

Cell fractionation

Nine million cells were harvested and divided into two parts: 1 million cells were used for whole cell lysate and 8 million cells were used for fractionation. Cells were washed twice in PBS and treated with 250 μl of the Harvest buffer (10 mM HEPES pH 7.9, 50 mM NaCl, 0.5 M sucrose, 0.1 mM EDTA, 0.5% Triton X-100, with freshly added 1 mM DTT, protease and phosphatase inhibitors) for 5 min on ice. Lysates were cleared by

centrifugation at $720 \times g$ for 10 min in swinging bucket rotor at 4°C . Supernatants were transferred to new tubes, cleared by centrifugation at $14,000 \times g$ for 15 min at 4°C and used as cytoplasmic fractions. The pellets from Harvest Buffer treatment were washed 2 to 3 times in 500 μl of Buffer A (10 mM HEPES pH 7.9, 10 mM KCl, 0.1 mM EDTA, 0.1 mM EGTA, and freshly added 1 mM DTT, protease and phosphatase inhibitors). Final pellets were lysed for 15 min at 4°C in Buffer B (10 mM HEPES pH 7.9, 500 mM NaCl, 0.1 mM EDTA, 0.1 mM EGTA, 0.1% NP-40, and freshly added 1 mM DTT, protease and phosphatase inhibitors). Pellets were sonicated and centrifuged for 15 min at $14,000 \times g$. Supernatants were used as nuclear fractions.

Immunofluorescence

HEK-293T cells expressing WT or mutant CCND1-HA proteins were seeded at a density of 0.5×10^6 cells/ml on a glass bottom 35 mm dish for 2 days. Cells were washed with PBS twice and fixed with 4% paraformaldehyde for 30 min at RT. Fixed cells were blocked with 5% BSA and 0.5% TritonX-100 in phosphate buffered saline (PBS) for 30 min at RT. Cells were then stained with anti-HA antibody for overnight at 4°C in a humidified chamber, followed by staining with fluorescently labeled secondary antibodies and nuclear staining with 4',6-diamidino-2-phenylindole (DAPI) (Life Technologies, Grand Island, NY). Cells were observed using a confocal microscope (Inverted LSM510 Meta 2-Photon Microscope, Zeiss) with a 63X objective. Images were captured and analyzed using Zen Imaging Software (ZEISS USA, Dublin CA).

Viability and apoptosis measurements

Cell viability was assessed either by using the CellTiter-Glo Luminescent assay (Promega, Madison, WI) following instructions by the manufacturer or by flow cytometric analysis for propidium iodide negative population. Apoptosis was measured by Annexin V-based methods using Annexin V Apoptosis Detection Kit (eBioscience, Inc., San Diego, CA).

Sanger sequencing

Analysis of *CCND1* exon 1 by Sanger sequencing was performed using the CCND1 primers and method as described [23].

ACKNOWLEDGMENTS

We thank Drs. John Chan for helpful discussion and Craig Thomas for research reagents.

CONFLICTS OF INTEREST

No potential conflicts of interest were disclosed by all authors.

GRANT SUPPORT

This work was supported in part by the National Cancer Institute of the National Institutes of Health under grant number P30CA033572. D.D.W is supported by NIH/NCI grant 5U01CA62505-19. V.N.N. is supported by the American Hematology Society and the Gabrielle's Angel Foundation for Cancer Research.

REFERENCES

1. Matsushime H, Roussel MF, Ashmun RA, Sherr CJ. Colony-stimulating factor 1 regulates novel cyclins during the G1 phase of the cell cycle. *Cell*. 1991; 65:701–713.
2. Kato J, Matsushime H, Hiebert SW, Ewen ME, Sherr CJ. Direct binding of cyclin D to the retinoblastoma gene product (pRb) and pRb phosphorylation by the cyclin D-dependent kinase CDK4. *Genes Dev*. 1993; 7:331–342.
3. Lukas J, Pagano M, Staskova Z, Draetta G, Bartek J. Cyclin D1 protein oscillates and is essential for cell cycle progression in human tumour cell lines. *Oncogene*. 1994; 9:707–718.
4. Diehl JA, Cheng M, Roussel MF, Sherr CJ. Glycogen synthase kinase-3beta regulates cyclin D1 proteolysis and subcellular localization. *Genes Dev*. 1998; 12:3499–3511.
5. Diehl JA, Zindy F, Sherr CJ. Inhibition of cyclin D1 phosphorylation on threonine-286 prevents its rapid degradation via the ubiquitin-proteasome pathway. *Genes Dev*. 1997; 11:957–972.
6. Zou Y, Ewton DZ, Deng X, Mercer SE, Friedman E. Mirk/tyrk1B kinase destabilizes cyclin D1 by phosphorylation at threonine 288. *J Biol Chem*. 2004; 279:27790–27798.
7. Casanovas O, Miro F, Estanyol JM, Itarte E, Agell N, Bachs O. Osmotic stress regulates the stability of cyclin D1 in a p38SAPK2-dependent manner. *J Biol Chem*. 2000; 275:35091–35097.
8. Williams ME, Meeker TC, Swerdlow SH. Rearrangement of the chromosome 11 bcl-1 locus in centrocytic lymphoma: analysis with multiple breakpoint probes. *Blood*. 1991; 78:493–498.
9. Raffeld M, Jaffe ES. bcl-1, t(11;14), and mantle cell-derived lymphomas. *Blood*. 1991; 78:259–263.
10. Wiestner A, Tehrani M, Chiorazzi M, Wright G, Gibellini F, Nakayama K, Liu H, Rosenwald A, Muller-Hermelink HK, Ott G, Chan WC, Greiner TC, Weisenburger DD, et al. Point mutations and genomic deletions in CCND1 create stable truncated cyclin D1 mRNAs that are associated with increased proliferation rate and shorter survival. *Blood*. 2007; 109:4599–4606.
11. Deshpande A, Pastore A, Deshpande AJ, Zimmermann Y, Hutter G, Weinkauff M, Buske C, Hiddemann W, Dreyling M. 3'UTR mediated regulation of the cyclin D1 proto-oncogene. *Cell Cycle*. 2009; 8:3584–3592.
12. Lu F, Gladden AB, Diehl JA. An alternatively spliced cyclin D1 isoform, cyclin D1b, is a nuclear oncogene. *Cancer Res*. 2003; 63:7056–7061.
13. Gladden AB, Woolery R, Aggarwal P, Wasik MA, Diehl JA. Expression of constitutively nuclear cyclin D1 in murine lymphocytes induces B-cell lymphoma. *Oncogene*. 2006; 25:998–1007.
14. Dal Col J, Zancai P, Terrin L, Guidoboni M, Ponzoni M, Pavan A, Spina M, Bergamin S, Rizzo S, Tirelli U, De Rossi A, Doglioni C, Dolcetti R. Distinct functional significance of Akt and mTOR constitutive activation in mantle cell lymphoma. *Blood*. 2008; 111:5142–5151.
15. Jares P, Colomer D, Campo E. Genetic and molecular pathogenesis of mantle cell lymphoma: perspectives for new targeted therapeutics. *Nat Rev Cancer*. 2007; 7:750–762.
16. Perez-Galan P, Dreyling M, Wiestner A. Mantle cell lymphoma: biology, pathogenesis, and the molecular basis of treatment in the genomic era. *Blood*. 2011; 117:26–38.
17. Wang ML, Rule S, Martin P, Goy A, Auer R, Kahl BS, Jurczak W, Advani RH, Romaguera JE, Williams ME, Barrientos JC, Chmielowska E, Radford J, et al. Targeting BTK with ibrutinib in relapsed or refractory mantle-cell lymphoma. *N Engl J Med*. 2013; 369:507–516.
18. Chiron D, Di Liberto M, Martin P, Huang X, Sharman J, Bleuca P, Mathew S, Vijay P, Eng K, Ali S, Johnson A, Chang B, Ely S, et al. Cell-cycle reprogramming for PI3K inhibition overrides a relapse-specific C481S BTK mutation revealed by longitudinal functional genomics in mantle cell lymphoma. *Cancer discovery*. 2014; 4:1022–1035.
19. Rahal R, Frick M, Romero R, Korn JM, Kridel R, Chan FC, Meissner B, Bhang HE, Ruddy D, Kauffmann A, Farsidjani A, Derti A, Rakiec D, et al. Pharmacological and genomic profiling identifies NF-kappaB-targeted treatment strategies for mantle cell lymphoma. *Nature medicine*. 2014; 20:87–92.
20. Ma J, Lu P, Guo A, Cheng S, Zong H, Martin P, Coleman M, Wang YL. Characterization of ibrutinib-sensitive and -resistant mantle lymphoma cells. *Br J Haematol*. 2014; 166:849–861.
21. Furman RR, Cheng S, Lu P, Setty M, Perez AR, Guo A, Racchumi J, Xu G, Wu H, Ma J, Steggerda SM, Coleman M, Leslie C, et al. Ibrutinib resistance in chronic lymphocytic leukemia. *N Engl J Med*. 2014; 370:2352–2354.
22. Woyach JA, Furman RR, Liu TM, Ozer HG, Zapatka M, Ruppert AS, Xue L, Li DH, Steggerda SM, Versele M, Dave SS, Zhang J, Yilmaz AS, et al. Resistance mechanisms for the Bruton's tyrosine kinase inhibitor ibrutinib. *N Engl J Med*. 2014; 370:2286–2294.
23. Kridel R, Meissner B, Rogic S, Boyle M, Telenius A, Woolcock B, Gunawardana J, Jenkins C, Cochrane C,

- Ben-Neriah S, Tan K, Morin RD, Opat S, et al. Whole transcriptome sequencing reveals recurrent NOTCH1 mutations in mantle cell lymphoma. *Blood*. 2012; 119:1963–1971.
24. Bea S, Valdes-Mas R, Navarro A, Salaverria I, Martin-Garcia D, Jares P, Gine E, Pinyol M, Royo C, Nadeu F, Conde L, Juan M, Clot G, et al. Landscape of somatic mutations and clonal evolution in mantle cell lymphoma. *Proc Natl Acad Sci U S A*. 2013; 110:18250–18255.
 25. Zhang J, Jima D, Moffitt AB, Liu Q, Czader M, Hsi ED, Fedoriw Y, Dunphy CH, Richards KL, Gill JI, Sun Z, Love C, Scotland P, et al. The genomic landscape of mantle cell lymphoma is related to the epigenetically determined chromatin state of normal B cells. *Blood*. 2014; 123:2988–2996.
 26. Weinstein S, Emmanuel R, Jacobi AM, Abraham A, Behlke MA, Sprague AG, Novobrantseva TI, Nagler A, Peer D. RNA inhibition highlights cyclin D1 as a potential therapeutic target for mantle cell lymphoma. *PLoS One*. 2012; 7:e43343.
 27. Mohanty S, Mohanty A, Sandoval N, Tran T, Bedell V, Wu J, Scuto A, Murata-Collins J, Weisenburger DD, Ngo VN. Cyclin D1 depletion induces DNA damage in mantle cell lymphoma lines. *Leuk Lymphoma*. 2016:1–13.
 28. Sutherland C, Leighton IA, Cohen P. Inactivation of glycogen synthase kinase-3 beta by phosphorylation: new kinase connections in insulin and growth-factor signalling. *The Biochemical journal*. 1993; 296 (Pt 1):15–19.
 29. Stambolic V, Woodgett JR. Mitogen inactivation of glycogen synthase kinase-3 beta in intact cells via serine 9 phosphorylation. *The Biochemical journal*. 1994; 303:701–704.
 30. Cross DA, Alessi DR, Cohen P, Andjelkovich M, Hemmings BA. Inhibition of glycogen synthase kinase-3 by insulin mediated by protein kinase B. *Nature*. 1995; 378:785–789.
 31. Coghlan MP, Culbert AA, Cross DA, Corcoran SL, Yates JW, Pearce NJ, Rausch OL, Murphy GJ, Carter PS, Roxbee Cox L, Mills D, Brown MJ, Haigh D, et al. Selective small molecule inhibitors of glycogen synthase kinase-3 modulate glycogen metabolism and gene transcription. *Chemistry & biology*. 2000; 7:793–803.
 32. Stambolic V, Ruel L, Woodgett JR. Lithium inhibits glycogen synthase kinase-3 activity and mimics wingless signalling in intact cells. *Current biology*. 1996; 6:1664–1668.
 33. Lannutti BJ, Meadows SA, Herman SE, Kashishian A, Steiner B, Johnson AJ, Byrd JC, Tyner JW, Loriaux MM, Deininger M, Druker BJ, Puri KD, Ulrich RG, et al. CAL-101, a p110delta selective phosphatidylinositol-3-kinase inhibitor for the treatment of B-cell malignancies, inhibits PI3K signaling and cellular viability. *Blood*. 2011; 117:591–594.
 34. Zeng Z, Shi YX, Tsao T, Qiu Y, Kornblau SM, Baggerly KA, Liu W, Jessen K, Liu Y, Kantarjian H, Rommel C, Fruman DA, Andreeff M, et al. Targeting of mTORC1/2 by the mTOR kinase inhibitor PP242 induces apoptosis in AML cells under conditions mimicking the bone marrow microenvironment. *Blood*. 2012; 120:2679–2689.
 35. Bodrug SE, Warner BJ, Bath ML, Lindeman GJ, Harris AW, Adams JM. Cyclin D1 transgene impedes lymphocyte maturation and collaborates in lymphomagenesis with the myc gene. *EMBO J*. 1994; 13:2124–2130.
 36. Lovec H, Grzeschiczek A, Kowalski MB, Moroy T. Cyclin D1/bcl-1 cooperates with myc genes in the generation of B-cell lymphoma in transgenic mice. *EMBO J*. 1994; 13:3487–3495.
 37. Katz SG, Labelle JL, Meng H, Valeriano RP, Fisher JK, Sun H, Rodig SJ, Kleinstein SH, Walensky LD. Mantle cell lymphoma in cyclin D1 transgenic mice with Bim-deficient B cells. *Blood*. 2014; 123:884–893.
 38. Yamamoto K, Lee BJ, Li C, Dubois RL, Hobeika E, Bhagat G, Zha S. Early B-cell-specific inactivation of ATM synergizes with ectopic CyclinD1 expression to promote pre-germinal center B-cell lymphomas in mice. *Leukemia*. 2015; 29:1414–1424.
 39. Alt JR, Cleveland JL, Hannink M, Diehl JA. Phosphorylation-dependent regulation of cyclin D1 nuclear export and cyclin D1-dependent cellular transformation. *Genes Dev*. 2000; 14:3102–3114.
 40. Martin P, Maddocks K, Leonard JP, Ruan J, Goy A, Wagner-Johnston N, Rule S, Advani R, Iberri D, Phillips T, Spurgeon S, Kozin E, Noto K, et al. Postibrutinib outcomes in patients with mantle cell lymphoma. *Blood*. 2016; 127:1559–1563.
 41. M'Kacher R, Farace F, Bennaceur-Griscelli A, Violot D, Clause B, Dossou J, Valent A, Parmentier C, Ribrag V, Bosq J, Carde P, Turhan AG, Bernheim A. Blastoid mantle cell lymphoma: evidence for nonrandom cytogenetic abnormalities additional to t(11;14) and generation of a mouse model. *Cancer genetics and cytogenetics*. 2003; 143:32–38.
 42. Davis RE, Ngo VN, Lenz G, Tolar P, Young RM, Romesser PB, Kohlhammer H, Lamy L, Zhao H, Yang Y, Xu W, Shaffer AL, Wright G, et al. Chronic active B-cell-receptor signalling in diffuse large B-cell lymphoma. *Nature*. 2010; 463:88–92.
 43. Choo YS, Zhang Z. Detection of protein ubiquitination. *Journal of visualized experiments : JoVE*. 2009.