

AWARD NUMBER: W81XWH-16-1-0524

TITLE: Non-Uniformly Sampled MR Correlated Spectroscopic Imaging in Breast Cancer and Nonlinear Reconstruction

PRINCIPAL INVESTIGATOR: Michael Albert Thomas

CONTRACTING ORGANIZATION: University of California, Los Angeles  
Los Angeles, CA 90095-1721

REPORT DATE: October 2018

TYPE OF REPORT: ANNUAL

PREPARED FOR: U.S. Army Medical Research and Materiel Command  
Fort Detrick, Maryland 21702-5012

DISTRIBUTION STATEMENT: Approved for Public Release;  
Distribution Unlimited

The views, opinions and/or findings contained in this report are those of the author(s) and should not be construed as an official Department of the Army position, policy or decision unless so designated by other documentation.

# REPORT DOCUMENTATION PAGE

Form Approved  
OMB No. 0704-0188

Public reporting burden for this collection of information is estimated to average 1 hour per response, including the time for reviewing instructions, searching existing data sources, gathering and maintaining the data needed, and completing and reviewing this collection of information. Send comments regarding this burden estimate or any other aspect of this collection of information, including suggestions for reducing this burden to Department of Defense, Washington Headquarters Services, Directorate for Information Operations and Reports (0704-0188), 1215 Jefferson Davis Highway, Suite 1204, Arlington, VA 22202-4302. Respondents should be aware that notwithstanding any other provision of law, no person shall be subject to any penalty for failing to comply with a collection of information if it does not display a currently valid OMB control number. **PLEASE DO NOT RETURN YOUR FORM TO THE ABOVE ADDRESS.**

<b>1. REPORT DATE</b> OCT 2018		<b>2. REPORT TYPE</b> Annual		<b>3. DATES COVERED</b> 30SEP2017 - 29SEP2018	
<b>4. TITLE AND SUBTITLE</b> Non-Uniformly Sampled MR Correlated Spectroscopic Imaging in Breast Cancer and Nonlinear Reconstruction				<b>5a. CONTRACT NUMBER</b>	
				<b>5b. GRANT NUMBER</b> W81XWH-16-1-0524	
				<b>5c. PROGRAM ELEMENT NUMBER</b>	
<b>6. AUTHOR(S)</b> Michael Albert Thomas  E-Mail:athomas@mednet.ucla.edu				<b>5d. PROJECT NUMBER</b>	
				<b>5e. TASK NUMBER</b>	
				<b>5f. WORK UNIT NUMBER</b>	
<b>7. PERFORMING ORGANIZATION NAME(S) AND ADDRESS(ES)</b> University of California, Los Angeles Los Angeles, CA 90095-1721				<b>8. PERFORMING ORGANIZATION REPORT NUMBER</b>	
<b>9. SPONSORING / MONITORING AGENCY NAME(S) AND ADDRESS(ES)</b> U.S. Army Medical Research and Materiel Command Fort Detrick, Maryland 21702-5012				<b>10. SPONSOR/MONITOR'S ACRONYM(S)</b>	
				<b>11. SPONSOR/MONITOR'S REPORT NUMBER(S)</b>	
<b>12. DISTRIBUTION / AVAILABILITY STATEMENT</b> Approved for Public Release; Distribution Unlimited					
<b>13. SUPPLEMENTARY NOTES</b>					
<b>14. ABSTRACT:</b> Magnetic Resonance Imaging (MRI) is an excellent anatomical tool to image tissue non-invasively. Dynamic contrast enhanced MRI (DCE-MRI) has excellent sensitivity but with varying specificity. MR Spectroscopy (MRS) enables biochemical characterization non-invasively of metabolites. Three major hypotheses are: (1) Accelerated 5-dimensional (5D) echo-planar imaging based correlated spectroscopic imaging (EP-COSI) acquisition produces multi-slice based multi-voxel two-dimensional (2D) MRS in a clinically feasible time. (2) Incorporating non-uniform under sampling (NUS) for spectral/spatial sampling into the 5D EP-COSI data acquisition and the group sparsity (GS)-based reconstruction will reduce the total acquisition time by at least a factor of 12. (3) ADC values derived from the multi-slice DWI data will correlate negatively with choline groups and positively with lipids quantified by the EP-COSI technique. Three goals are proposed: i) NUS schemes will be combined with 5D EP-COSI sequence. ii) GS- based CS reconstruction schemes will be developed for accelerated acquisition and optimized to reconstruct the NUS EP-COSI data with better reliability . iii) Alterations in metabolite and lipid levels will be correlated with ADC changes in breast cancer patients compared to healthy women which will improve the diagnostic accuracy. The study patient cohort will include 50 patients with malignant breast carcinoma, 20 patients with benign breast tumor and 20 healthy women.					
<b>15. SUBJECT TERMS</b> Dynamic contrast enhanced (DCE) MRI, MR Spectroscopy (MRS), echo-planar imaging based correlated spectroscopic imaging (EP-COSI), five-dimensional (5D), two-dimensional (2D), apparent diffusion coefficient (ADC)					
<b>16. SECURITY CLASSIFICATION OF:</b>			<b>17. LIMITATION OF ABSTRACT</b>  Unclassified	<b>18. NUMBER OF PAGES</b>  10	<b>19a. NAME OF RESPONSIBLE PERSON</b> USAMRMC
<b>a. REPORT</b>  Unclassified	<b>b. ABSTRACT</b>  Unclassified	<b>c. THIS PAGE</b>  Unclassified			<b>19b. TELEPHONE NUMBER</b> (include area code)

## Table of Contents

	<u>Page</u>
<b>1. Introduction.....</b>	<b>1</b>
<b>2. Keywords.....</b>	<b>1</b>
<b>3. Accomplishments.....</b>	<b>1</b>
<b>4. Impact.....</b>	<b>6</b>
<b>5. Changes/Problems.....</b>	<b>7</b>
<b>6. Products.....</b>	<b>7</b>
<b>7. Participants &amp; Other Collaborating Organizations.....</b>	<b>7</b>
<b>8. Special Reporting Requirements.....</b>	<b>8</b>
<b>9. Appendices.....</b>	<b>8</b>

**1. Introduction:** Breast cancer death rates are higher than those for any other cancer, besides lung cancer in US. More than 232,670 new cases are diagnosed annually (1). Diagnostic accuracy and effective therapeutic management of the breast tumor remain significant medical challenges, hence early detection, diagnosis, and timely treatments are essential to successful health care (2-6). Currently, histological classification from biopsy specimens is generally used as the gold standard to determine malignancy. Hence, optimal imaging methods will enable predicting whether a tumor is going to behave in a benign or aggressive fashion. The proposed Breakthrough Step I grant application will focus on three specific goals: 1) To implement and optimize the NUS based 5D EP-COSI sequence on a 3T Prisma MRI scanner to accelerate the acquisition by an order of magnitude. 2) To develop GS- and total variation (TV)- based CS reconstruction schemes for accelerated acquisition and optimized to reconstruct the NUS EP-COSI data with better fidelity. 3) To record changes in metabolite and lipid levels will be correlated with ADC changes in breast cancer patients compared to healthy women to improve the diagnostic accuracy. Next to lung cancer, breast cancer is the leading cause of death in women in the US. Improving the specificity of malignant and benign tumors using accelerated MRI techniques will be a major outcome. Compressed sensing (CS)-based multi-dimensional magnetic resonance spectroscopic imaging (MRSI) will significantly increase the speed of data acquisition with minimal discomfort for breast cancer patients leading to improved diagnostic accuracy and early detection. In this proposal, we will develop a novel technique for identifying breast cancers more robustly and with greater accuracy than methods currently available.

**2. Keywords:** Dynamic contrast enhanced (DCE) MRI, MR Spectroscopy (MRS), echo-planar imaging based correlated spectroscopic imaging (EP-COSI), five-dimensional (5D), two-dimensional (2D), apparent diffusion coefficient (ADC). Group sparsity (GS), compressed sensing (CS), total variation (TV)

### **3. Accomplishments:**

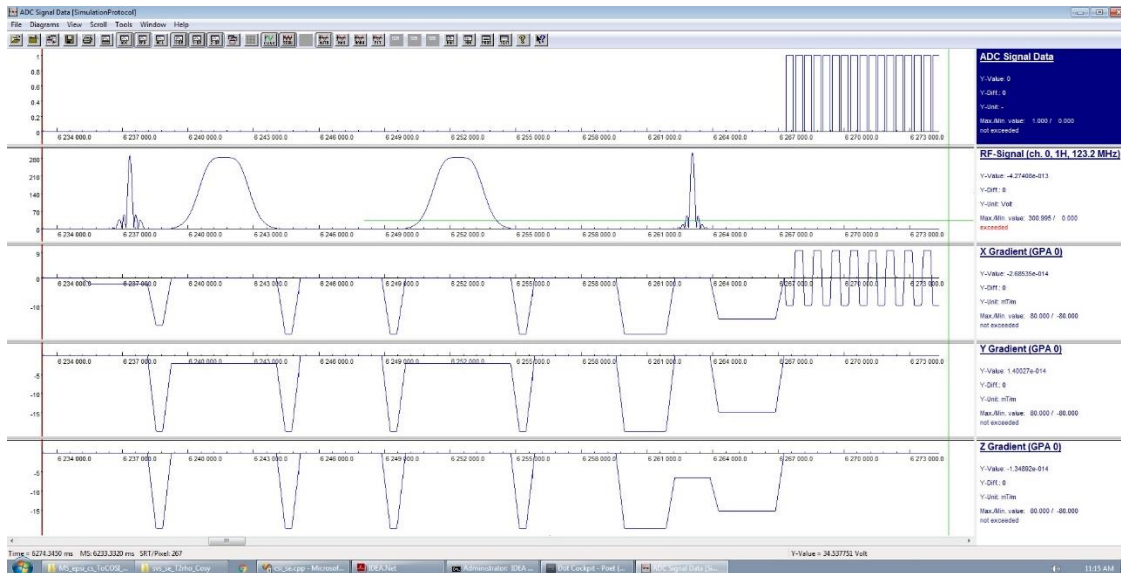
**Three major goals** are the following: **1)** To further optimize a novel five-dimensional (5D) technology called accelerated echo-planar based correlated spectroscopic imaging (EP-COSI) on a 3T Prisma MRI/MRS scanner (using the Siemens IDEA compiler running on the latest VD13D platform). **2)** To implement and optimize non-linear reconstruction methods such as group sparsity and total variation. **3)** To record i) the 5D NUS EP-COSI data, and ii) DWI and to evaluate ADC maps in the malignant and benign breasts, and healthy women and to correlate the MRSI findings with that of DWI in differentiating benign from malignant breast cancers, and to calculate specificity, sensitivity and accuracy of multi-voxel based 2D MRS and DWI data to differentiate benign from malignant tumors.

What was accomplished Under these goals:

To accomplish the above mentioned goals, we proposed the following ten tasks:

**Task 1:** To implement and evaluate a novel five-dimensional (5D) technology called accelerated echo-planar based correlated spectroscopic imaging (EP-COSI) on a 3T Prisma MRI/MRS scanner (using the latest Siemens IDEA compiler running on the latest VE11 platform). (**Months 1-6**).

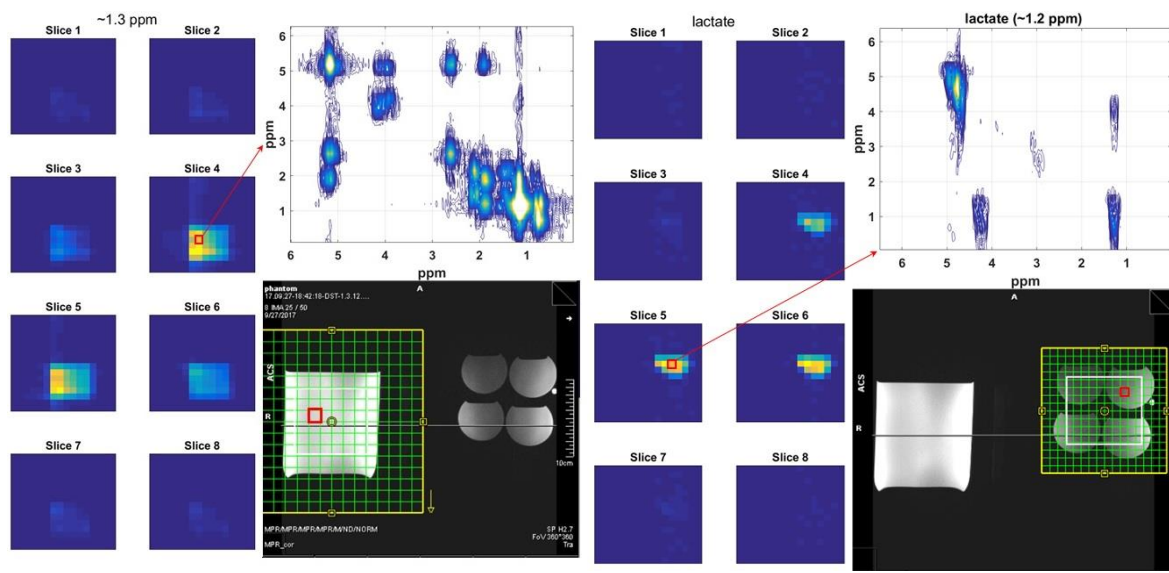
*The 5D EP-COSI sequence as shown in Fig.1 was implemented on three different platforms (VE11A, VE11B and VE11C): top row: the analog-to-digital converter (ADC); 2<sup>nd</sup> row: the radio-frequency (RF) wave forms used to the slice localization along 3 spatial dimensions; 3<sup>rd</sup> through 5<sup>th</sup> rows represent X, Y and Z gradient wave forms.*



**Fig.1.** The 5D EP-COSI sequence showing the ADC, RF and gradient waveforms.

**Task 2:** To evaluate the accelerated 5D EP-COSI data using a breast phantom containing two concentric spheres, the inner one containing several metabolites (choline and ethanolamine groups, creatine, lactate and more amino acids) which have been reported in breast tissues surrounded by the outer phantom containing corn oil to mimic fatty tissues known to be in breast tissues, and to optimize the echo speed-factor and other acquisition parameters using the phantom (**Months 1-6**).

As shown in Fig.2, we prepared a corn oil phantom (left) containing saturated and unsaturated lipids to mimic infiltrating fat in the breast tissue and a quad phantom (right) containing N-acetylaspartate, lactate, creatine and choline. Eight slices from the oil phantom localized by the 5D EP-COSI sequence is shown on the left and similarly, 8 slices from the quad phantom on the right side. Extracted 2D COSY spectra from the corn oil and lactate are also shown.



**Fig.2.** A corn oil and a quad phantom containing metabolites are shown.

**Task 3:** To implement and optimize non-linear reconstruction methods (group sparsity and total variation). (Months 3-9).

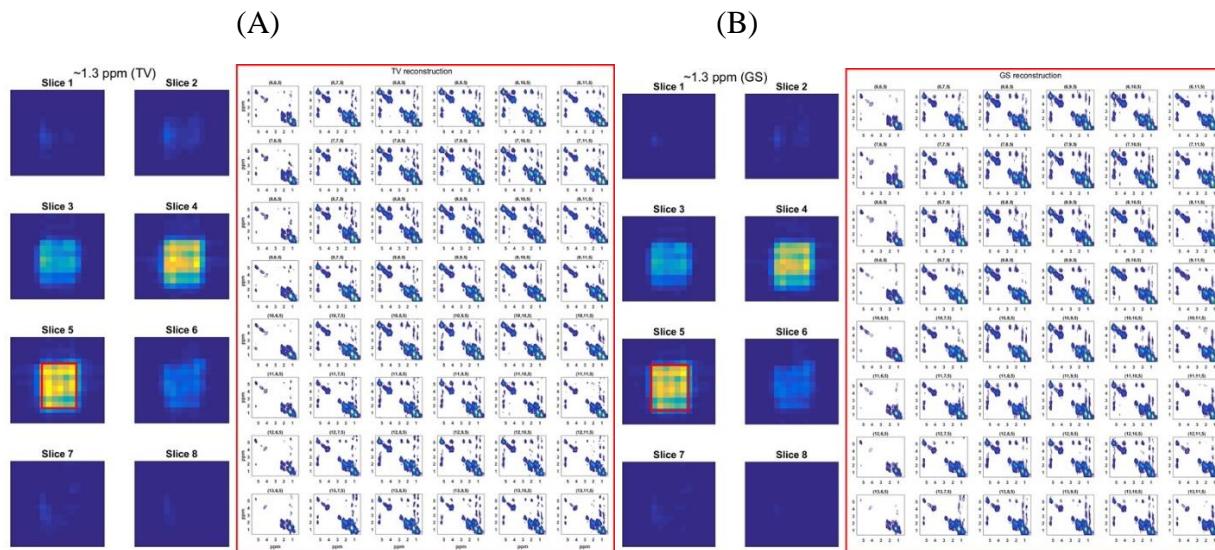
Using the above corn oil and the metabolite (quad) phantoms, the undersampled data at 8X and 12X were reconstructed using two different non-linear reconstruction methods: 1) total variation and 2) group sparsity (GS). The GS method was able to retain the fidelity even when higher acceleration schemes were used (12X and 16X).

**Task 4:** To continue to evaluate/optimize the accelerated 5D EP-COSI data using the breast phantom containing two concentric spheres, to optimize the echo speed-factor and other acquisition parameters using the phantom (Months 7-18).

We have purchased a spherical flask containing two layers in which the corn oil will be inside one layer and breast metabolites (choline, phosphoryl and glycerylphosphoryl choline, uridine phosphate) from Sigma-Alrich. The experiment is currently in progress.

**Task 5:** To record the 5D EP-COSI spectra in the fatty, glandular and ductal areas of healthy breasts. Twenty healthy female volunteers (25-70 years old) with no previous history of breast cancer will be investigated. (Months 9-36).

As shown in Fig.3, the accelerated (8X) 5D EP-COSI data was acquired in a healthy subject and the reconstructed data using TV and GS are shown. The chemical shift multi-slice images were of good quality using both reconstruction methods.



**Fig.3.** Accelerated 5D EP-COSI data acquired in a healthy volunteer and reconstructed using TV (A) and GS (B)

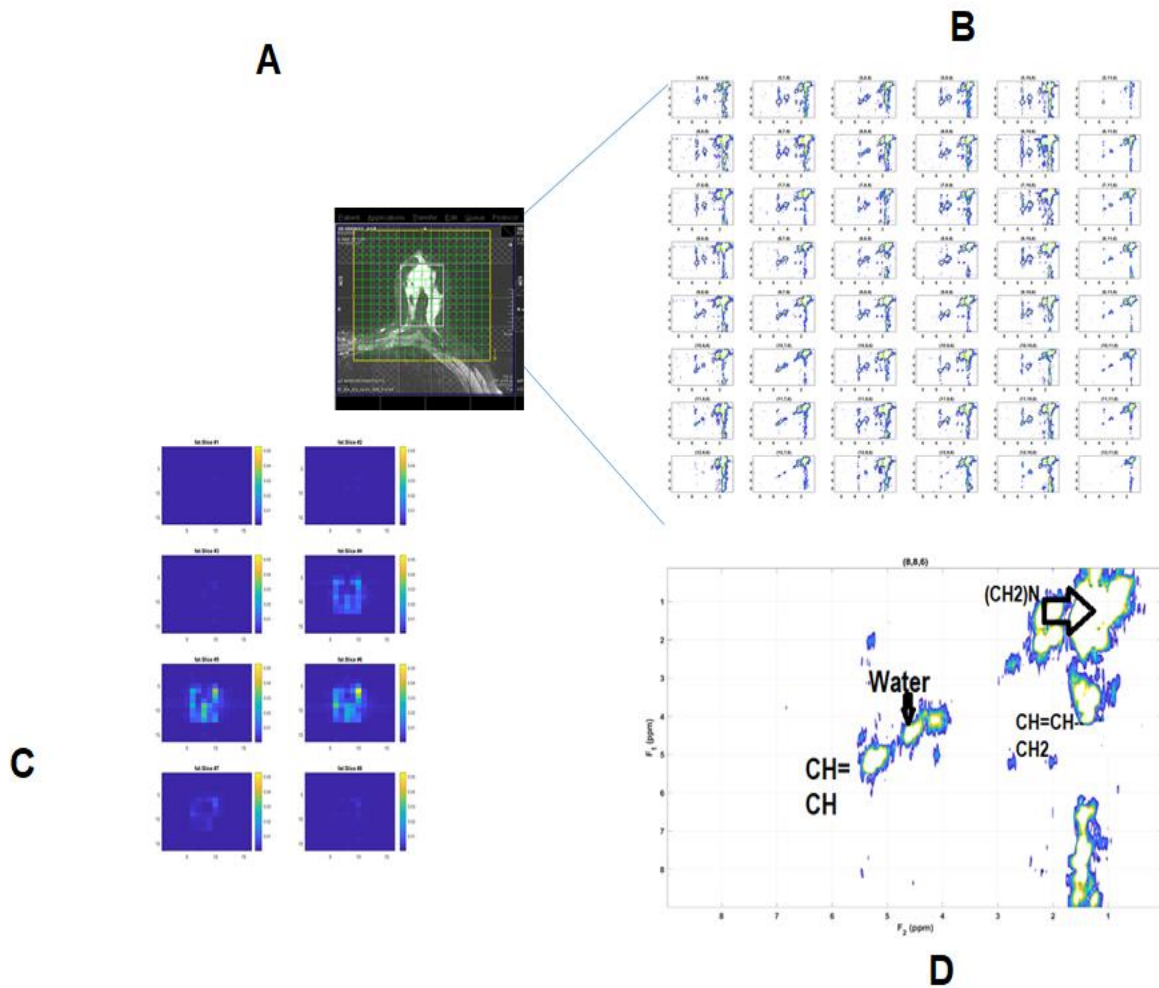
Eight healthy women (age range of 26-58 years) were screened for the MRI scans. One subject declined to continue with the scan due to claustrophobia. Hence, the 5D EP-COSI data have been successfully scanned in 7 healthy using the Siemens 3T Skyra MRI scanner currently running on the VE11C platform.

**Task 6:** To record multi-slice DWI in twenty healthy breasts, and to calculate the ADC maps. (Months 9-36).

Diffusion weighted MRI data have been successfully recorded in 7 healthy subjects using the Siemens 3T Skyra MRI scanner currently running on the VE11C platform.

**Task 7:** To record the 5D EP-COSI spectra in twenty patients with benign breast tumor (fibroadenoma, proliferative fibrocystic change and papillomas) (Months 9-36).

The 5D EP-COSI and diffusion weighted MRI data have been successfully scanned in 10 benign breast cancer subjects using the Siemens 3T Skyra MRI scanner currently running on the VE11C platform. Shown in Fig.4 are results from a benign breast cancer subject.

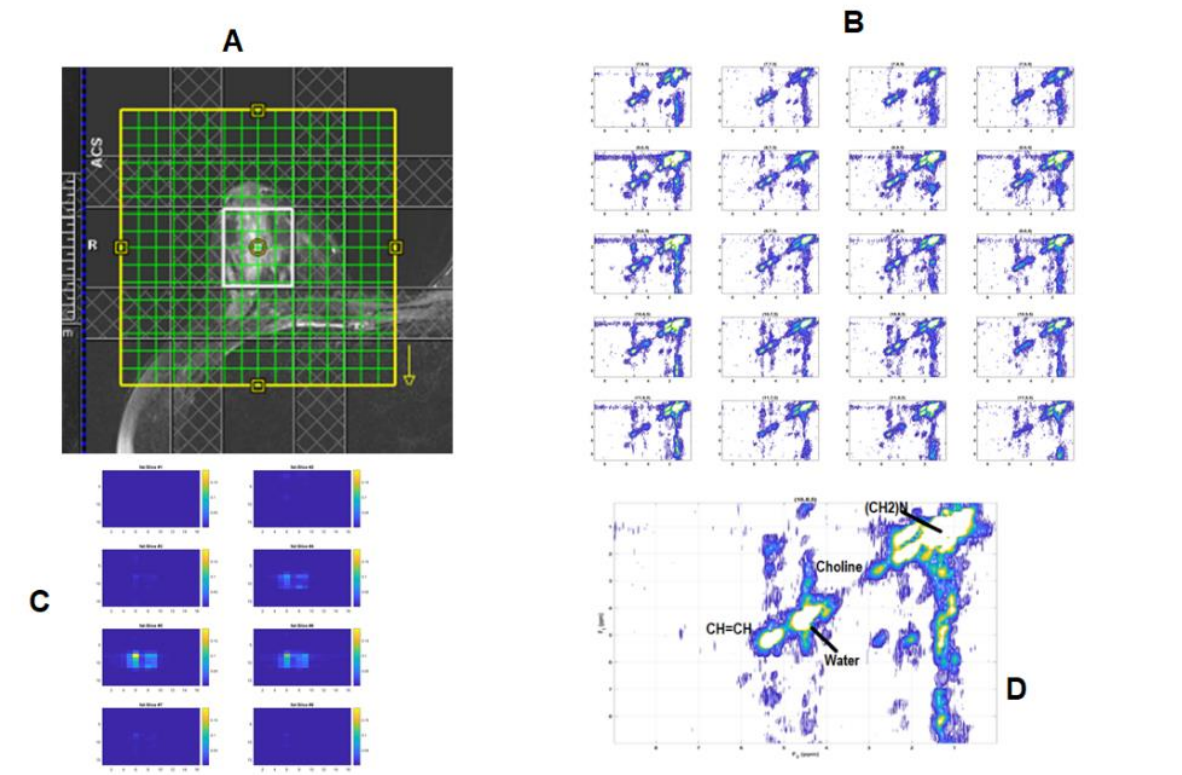


**Fig.4.** Accelerated (8X faster) 5D EP-COSI data acquired in a 32 yo benign (fibroadenoma) breast cancer subject and reconstructed using GS: A) Axial MRI showing the FOV covered by 5D EP-COSI. B) Multi-voxel COSY spectra over the volume localized by the 5D EP-COSI sequence. C) 8 Slice-chemical shift Images of the polymethylene (CH<sub>2</sub>)<sub>N</sub> resonance at 1.4ppm. D) 2D COSY spectrum extracted from the location (8,8) of the 6<sup>th</sup> slice .

The 5D EP-COSI acquisition was terminated in one malignant breast cancer patient since she had multiple clips from biopsy and 'shimming' was beyond acceptable range ( $>200\text{Hz}$ )

**Task 8:** To record the 5D EP-COSI spectra in fifty patients with biopsy-proven breast cancer (ductal carcinoma and invasive lobular cancer) (Months 9-36).

Nineteen malignant breast cancer patients have been investigated so far. Results from a 41 y.o. malignant breast cancer patient is shown in Fig.5.



**Fig.5.** Accelerated 5D EP-COSI data (8X faster) acquired in a 41 yo malignant breast cancer patient (grade 3, invasive ductal carcinoma and ductal carcinoma in situ) and reconstructed using GS: A) Axial MRI showing the field of view (FOV) covered (yellow boundary) and the 3-spatial dimensions localized by the white box. B) Multi-voxel COSY spectra (1cm x1cm x1.5cm) over the volume localized by the 5D EP-COSI sequence. C) 8 Slice-chemical shift Images of the polymethylene (CH<sub>2</sub>)<sub>N</sub> resonance at 1.4ppm . D) 2D COSY spectrum extracted from the location (10,8) of the 5<sup>th</sup> slice .

**Task 9:** To record multi-slice DWI in fifty malignant patients with biopsy-proven breast cancer and twenty benign breast cancer, and to calculate the ADC maps. (Months 9-36).

DWI was also recorded in nineteen malignant breast cancer patients and we have been quantifying the apparent diffusion coefficient (ADC) using the DWI data.

**Task 10:** To correlate the accelerated 5D EP-COSI findings with that of DWI in differentiating benign from malignant breast cancers, and to calculate specificity, sensitivity and accuracy of the MRSI and DWI data in differentiating benign from malignant tumors. (**Months 12-36**).

*We have studied a total of 19 malignant and 10 benign breast cancer patients and seven healthy women successfully. Both 5D EP-COSI and DWI data have been recorded, and post-processing of the entire data is being analyzed now.*

**Major Activities:** 1) Our continuation renewal application was submitted to the UCLA IRB office in May 2018 and the renewal application was approved by the UCLA IRB in the early June; a copy of the continuation approval was submitted to HRPO in August. 2) The 5D EP-COSI and DWI data were recorded in 17 malignant and 5 benign breast cancer patients during the 2<sup>nd</sup> year so far.

**Significant Results/Key Outcomes:** After testing the 5D EP-COSI sequence in 7 healthy women, we have scanned a total of 18 malignant and 10 benign breast cancer patients so far. One subject declined to continue with the scan due to claustrophobia. The 5D EP-COSI and diffusion weighted MRI were scanned using the Siemens 3T Skyra MRI scanner currently running on the VE11C platform.

**What Opportunities for training and professional development has the project provided?:** Mr. Andres Saucedo, a Ph.D. student working in the group of Dr. Thomas, has received the required safety training to run the MRI and MR spectroscopy protocol. He has recorded MRI, DWI and 5D EP-COSI in 19 malignant and 9 benign breast cancer patients, and 7 healthy women using the 3T MRI scanner (Siemens Skyra).

**How were the results disseminated to communities of interest:** Nothing to Report

**What do you plan to do during the next reporting period to accomplish the goals?:** We will continue to screen more malignant and benign breast cancer patients, and healthy subjects. After screening the subjects for MRI safety and other related issues, they will be scanned using the 3T Skyra MRI scanner equipped with a dedicated breast coil. We will prepare 2 abstracts, first one on the 5D EP-COSI data and the second one on DW MRI and will submit these abstracts to the 2019 International Society of Magnetic Resonance in Medicine in November 2018 and will submit an abstract to the Radiological Society of Northern America (RSNA) or cancer related conferences in 2019. A manuscript including the 5D EP-COSI data will be prepared in 2019.

#### **4. Impact:**

**What was the impact on the development of the principal disciplines of the project?:** Nothing to Report

**What was the impact on other disciplines?** Nothing to Report

**What was the impact on technology transfer?** Nothing to Report

**What was the impact on society beyond science and technology?** Nothing to Report

**5. Changes/Problems:** Nothing to Report

**6. Products:**

Publications, Conference papers and Presentations: An ePoster on the abstract entitled “Correlation of Diffusion Weighted Imaging and Echo planar Correlated Spectroscopic Imaging of Breast Cancer at 3T” was prepared and submitted to the ISMRM website on April 14<sup>th</sup>. Two new abstracts are currently in preparation.

**7. PARTICIPANTS & OTHER COLLABORATING ORGANIZATIONS**

What individuals have worked on the project?

<b><u>Name</u></b>	<b>M. Albert Thomas Ph.D.</b>
<b><u>Project Role</u></b>	<b><u>P.I.</u></b>
<b><u>Researcher Identifier</u></b>	0000-0001-9037-2585
<b><u>Nearest person month worked</u></b>	<b><u>12 months</u></b>
<b><u>Contribution to Project</u></b>	<b><u>Design of the project and supervision of the MRI data acquisition and pos-processing</u></b>
<b><u>Funding Support</u></b>	<b><u>Dr. Thomas is currently funded by NIH and VA Merit grant also</u></b>
<b><u>Name</u></b>	<b>Melissa Joines M.D.</b>
<b><u>Project Role</u></b>	<b><u>Co.I.</u></b>
<b><u>Researcher Identifier</u></b>	None
<b><u>Nearest person month worked</u></b>	<b><u>5 months</u></b>
<b><u>Contribution to Project</u></b>	<b><u>Study Subject Recruitment and review of MRI</u></b>
<b><u>Funding Support</u></b>	<b><u>None</u></b>
<b><u>Name</u></b>	<b>Nanette DeBruhl M.D.</b>
<b><u>Project Role</u></b>	<b><u>Co.I.</u></b>
<b><u>Researcher Identifier</u></b>	None
<b><u>Nearest person month worked</u></b>	<b><u>5 months</u></b>
<b><u>Contribution to Project</u></b>	<b><u>Study Subject Recruitment and review of MRI</u></b>
<b><u>Funding Support</u></b>	<b><u>None</u></b>
<b><u>Name</u></b>	<b>Manoj Sarma</b>
<b><u>Project Role</u></b>	<b><u>Co-I</u></b>
<b><u>Nearest person month worked</u></b>	<b><u>4 months</u></b>
<b><u>Contribution to Project</u></b>	<b><u>Sequence Development and Data Processing</u></b>
<b><u>Funding Support</u></b>	<b><u>Partly funded by NIH grants also</u></b>
<b><u>Name</u></b>	<b>Andres Saucedo M.S.</b>
<b><u>Project Role</u></b>	Graduate Student Researcher
<b><u>Research Identifier</u></b>	None
<b><u>Contribution to Project</u></b>	<b><u>Data Acquisition and Post-processing</u></b>
<b><u>Funding support</u></b>	Partly funded by NIH grants
<b><u>Name</u></b>	<b>Stephanie Gilbert B.S.</b>
<b><u>Project Role</u></b>	<b><u>Study Coordinator</u></b>
<b><u>Nearest person month worked</u></b>	<b><u>5 months</u></b>

<u>Contribution to Project</u>	<u>IRB protocol renewal/amendment, recruitment</u>
<u>Funding Support</u>	<u>Radiology Departmental funds</u>

Has there been a change in the active other support of the PD/PI(s) or senior/key personnel since the last reporting period? Nothing to Report

What other organizations were involved as partners? Nothing to Report

**8. SPECIAL REPORTING REQUIREMENTS:** Nothing to Report

**9. Appendices:** Nothing to Report.