



Joint Program Executive Office for Chemical and Biological Defense

Leveraging S&T for Situational Awareness to Counter Traditional Threats

Daniel McCormick
Deputy Chief of Staff for
Strategic Portfolio Integration

March 1, 2016





Joint Program Executive Office for Chemical and Biological Defense

Mission:

Provide Research, Development, Acquisition Fielding and Life Cycle Support of Chemical, Biological, Radiological and Nuclear Defense Equipment, Medical Countermeasures Capabilities for Army, Marine Corps, Air Force, Navy and Combatant Commands Supporting the National Strategies

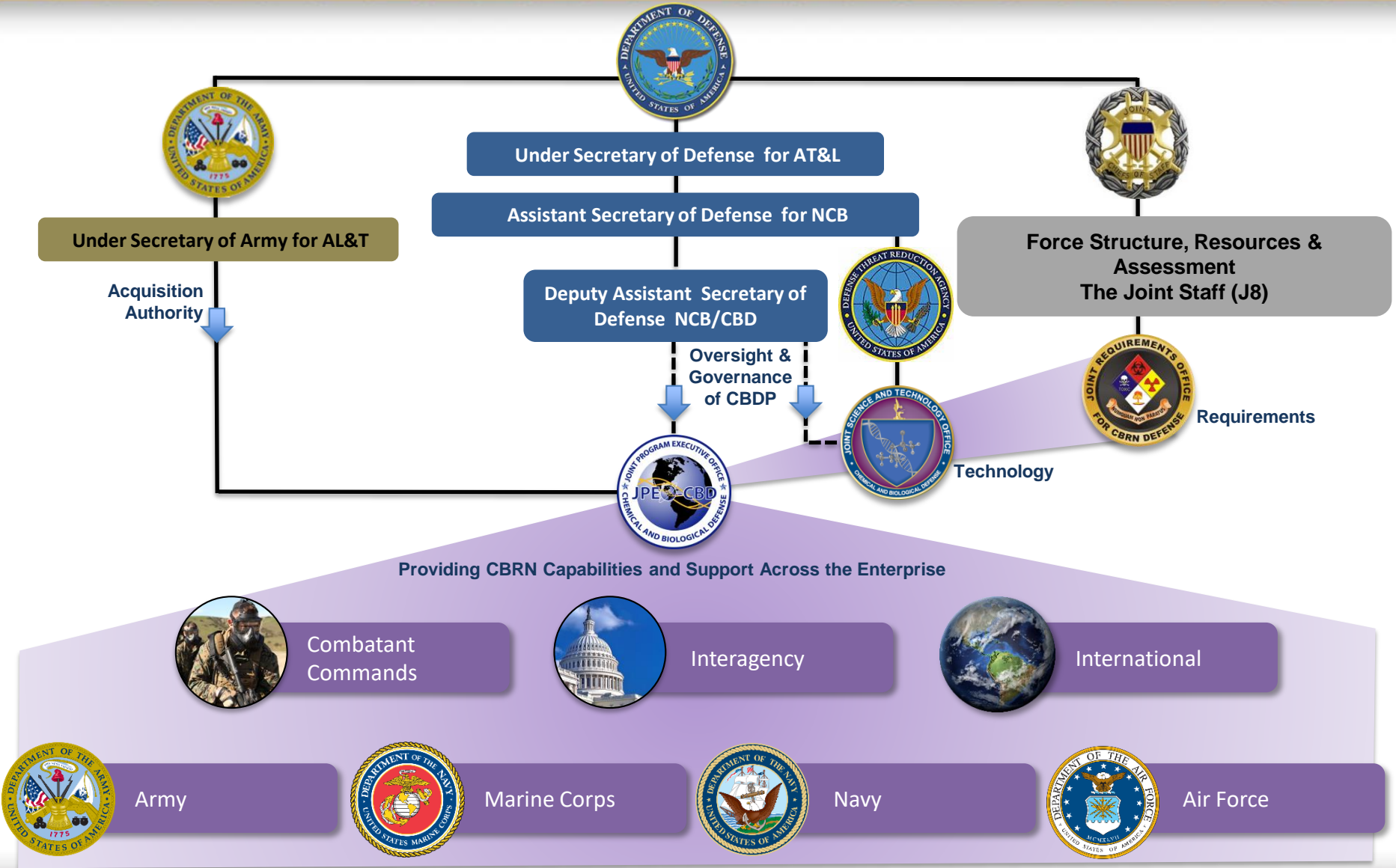
Vision:

An Agile, Results-Oriented, and Transformational Acquisition Enterprise Delivering Net-Centric, Modular, Tailorable and Multi-Purpose Capabilities to the Nation



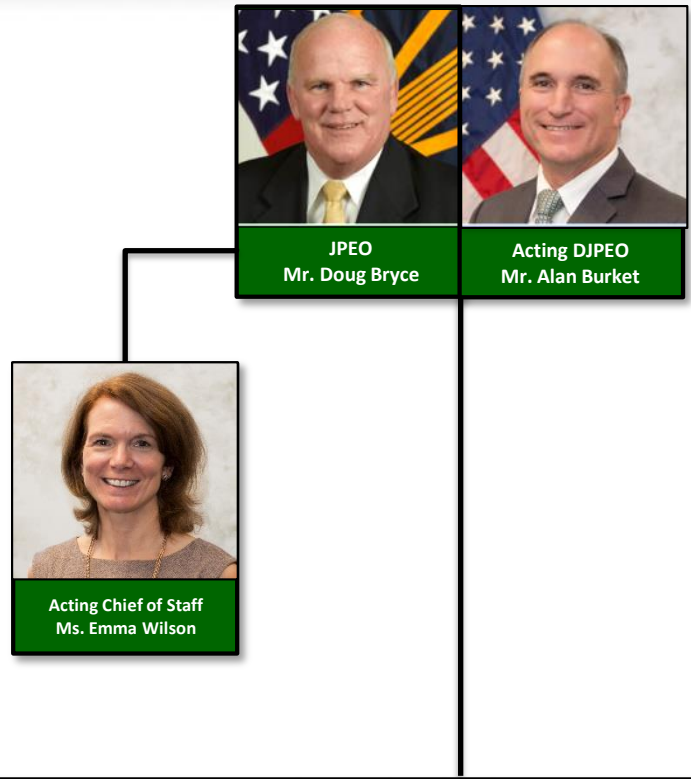





Department of Defense Chemical Biological Defense Program





JPEO-CBD Organizational Structure



-  Army
-  Navy
-  Marines

Our Joint Project Managers



(P) = Provisional



Areas of Responsibility



Areas of Responsibility

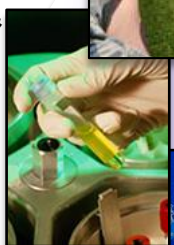
Vaccines



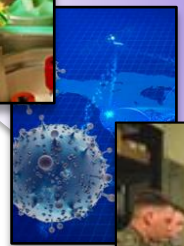
Treatments



Diagnostics & Integrated Advanced Analytics



Biosurveillance



Information Systems



Chemical, Biological & Radiological Agent Detection



Individual & Collective Protection

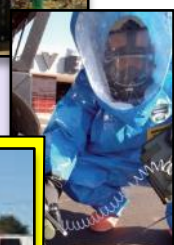


Rad/Nuc Defense



Decontamination

WMD Elimination



WMDs Civil Support



Installation Protection & Response

Expeditionary Base Protection



**Transitioning to PEO-IEW&S*

Total Life Cycle Management



Current Major Initiatives



- **Biosurveillance**
 - Joint US Forces Korea Portal and Integrated Threat Recognition
 - Biosurveillance Portal



- **Global Crisis Response**
 - Diagnostics/Critical Reagents Program
 - Therapeutics/Vaccines
 - Force Protection Systems



- **Emerging Threats**
 - NTA capabilities to WMD Civil Support Teams/active components



- **Installation & Force Protection (*Installation as a System*)**



- **Radiological/Nuclear**
 - Joint Personal Dosimeter Program
 - Radiological Detection System



- **Long term planning and analysis (30yr Plan)**



- **Advanced Technology Demonstrations (ATDs)**



Biosurveillance Portal Program

- **Biosurveillance Portal Program (BSP) utilizes agile software development process allowing evolution of solutions through collaboration (between developer and user) via regular user engagements**
- **Promotes:**
 - Adaptive Planning
 - Evolutionary Development
 - Early Delivery
 - Continuous Improvement
 - Rapid and Flexible response to change
- **Currently provides new capabilities every 3 months**
- **Built using framework that allows system to be modular**
- **Next major milestone: Initial Operational Capability in June 2016**
- **Matured S&T capabilities transitioned through DTRA/JSTO**



Integrated Early Warning

- **Integrated Early Warning Advanced Technology Demonstration (ATD) - \$53M project with planned period of performance FY15 - FY19:**
 - Phase 1: Collaboration with DHS on biosurveillance and early warning information synthesis and management
 - Phases 2 and 3: Focus on remote and wearable CBRN sensing technologies, respectively
 - Phase 4: Integration of sensors into the biosurveillance early warning architecture
- **Provides Commanders ability to make right decisions at the right time by**
 - Providing CBRN risk assessment of the current situation
 - Assisting in decision support for mission support requirements
 - Providing sensor placement recommendations
- **Utilizes 4 Areas:**
 - Early Warning
 - Data Fusion
 - Remote Sensing
 - Decision Support

Integrated Early Warning **WILL NOT** make the decision for the Commander



Areas of Interest for IEW

Protect Warfighters against CBRN/TIM contamination and exposure:

- Remote Sensing (Chem/Bio)
JUPITR JCACS IEW
- Field Diagnostics (Chem)
JCACS IEW
- Novel Early Warning Capabilities
IEW

**Disseminate evaluated information on CBRN/TIM threats and hazards:
Command and control of large scale passive defense ops:**

- Data Fusion
IEW
- Decision Support Software
IEW
- Web Enablement to Tactical Echelons
JCACS IEW
- IA Compliant Wired/Wireless Architecture
IEW

Conduct CBRN/TIM hazard assessment:

- Predictive Modeling Deposition
IEW
- Data Fusion
IEW
- Decision Support Software
IEW

Protect critical and essential mission tasks and activities against CBRN/TIM contamination and exposure:

- Sensor Health and Diagnostics
JUPITR JCACS IEW
- Decision Support
JCACS IEW
- Scalable IEW CBRN Defense Capability
IEW

- Address MSCoE Layered Sensing Concept to Inform IEW Requirements Development
- Acknowledge Deltas of Programs of Record and Current ATDs
- Shape Future Related IEW Programs (CSIRP, JESS, etc.)

***The BEST Technology and Equipment
At the RIGHT PLACE
At the RIGHT TIME
At the RIGHT COST***



Daniel McCormick
Deputy Chief of Staff
for Strategic Portfolio Integration

410-436-3151

Daniel.j.mccormick5.civ@mail.mil

www.jpeocbd.osd.mil