

TERRAIN PHOTOGRAPHS  
AMERICAN WORLD WAR BATTLEFIELDS  
IN EUROPE

77<sup>TH</sup> DIVISION

VESLE SECTOR  
AUGUST 11-17, 1918

OISE-AISNE OFFENSIVE  
AUGUST 18 - SEPTEMBER 16, 1918

(PART TWO)

PREPARED BY  
THE AMERICAN BATTLE MONUMENTS  
COMMISSION

THE COMMAND AND STAFF COLLEGE

LIBRARY



Class Symbol M9403-H6-C.73-G3-C77

Accession Number N 69611

## PREFACE

THIS album is part of a collection of photographs of the various battlefields in Europe upon which the Armed Forces of the United States were actively engaged during World War I.

These terrain photographs were taken and prepared by the American Battle Monuments Commission, as provided in the act of Congress of March 4, 1923, to complete the historical record of the operations of the American units. The series comprises 69 albums containing 1,396 photographs.

The contents of these albums will be of particular value when studied in conjunction with the Summaries of Operations, prepared by the American Battle Monuments Commission, which relate in detail the combat services of each American division.

On the page preceding the photographs will be found a small-scale key map showing the general operation of which this divisional operation was a part. In the pocket inside the back cover will be found a reprint of a 1:20,000 map, of the type used during the war, showing the operation covered by the photographs in this

album. On this index map have been indicated the position of the camera and the direction in which it was sighted in taking each photograph.

On the page opposite each photograph is a section of the 1:20,000 map of the terrain in the vicinity of that pertaining to the photograph. The white wedge-shaped portion of the map indicates the sector of terrain which actually appears in the picture. The plotted position of the camera and the axis of the picture are shown in blue, the length of the blue line approximately indicating the depth of the view. The circled number corresponds to the number of the photograph, of which the numerals before the dash indicate the division and the numerals after the dash indicate the serial number of the photograph in this division.

Various topographical features visible in the photographs have been indicated by name to facilitate orientation.

Complete sets of these albums have been deposited with the National Archives, the Library of Congress, the Historical Division of the War Department General Staff, and the Command and Staff College.

AMERICAN BATTLE MONUMENTS COMMISSION,

*John J. Pershing*  
CHAIRMAN

NOV 22 1945

77<sup>TH</sup> DIVISION

VESLE SECTOR

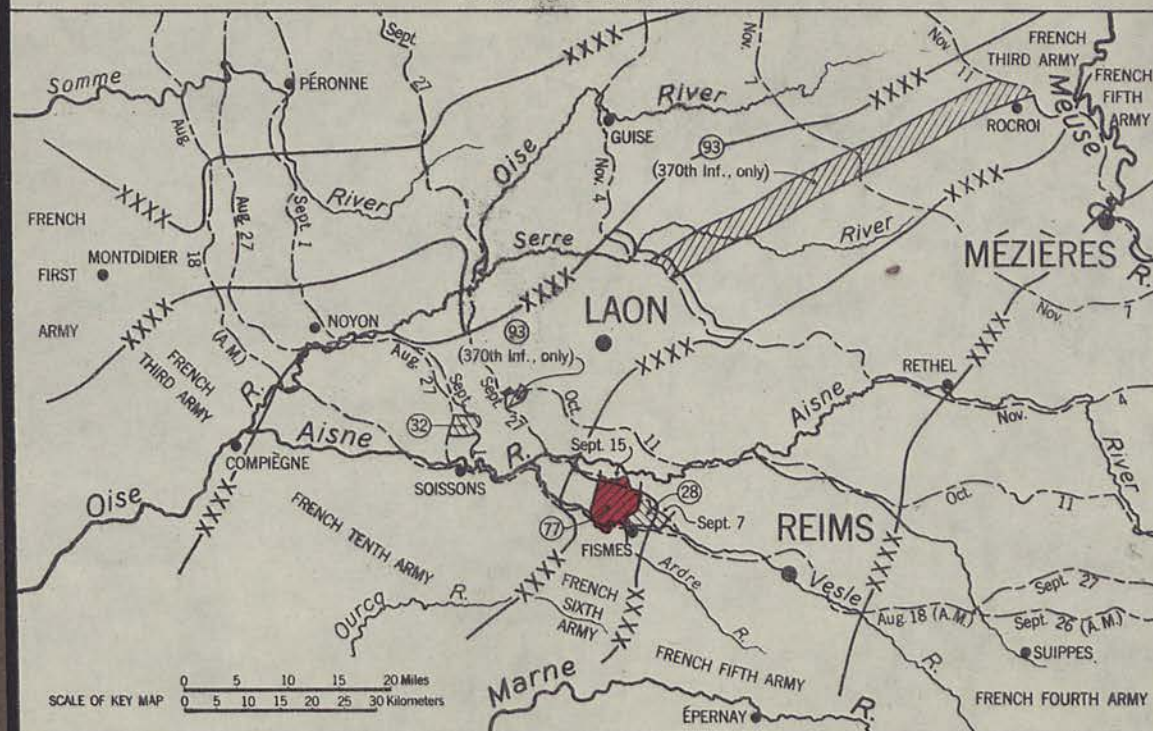
AUGUST 11-17, 1918

OISE-AISNE OFFENSIVE

AUGUST 18—SEPTEMBER 16, 1918

# KEY MAP OISE-AISNE OFFENSIVE

AUGUST 18-NOVEMBER 11, 1918



SCALE OF KEY MAP  
0 5 10 15 20 Miles  
0 5 10 15 20 25 30 Kilometers

Circled numeral indicates  
American Division

Area Covered by Operation  
Shown on Summary Map

Ground Gained by  
American Divisions

Ground Gained by  
French Divisions

Front Line

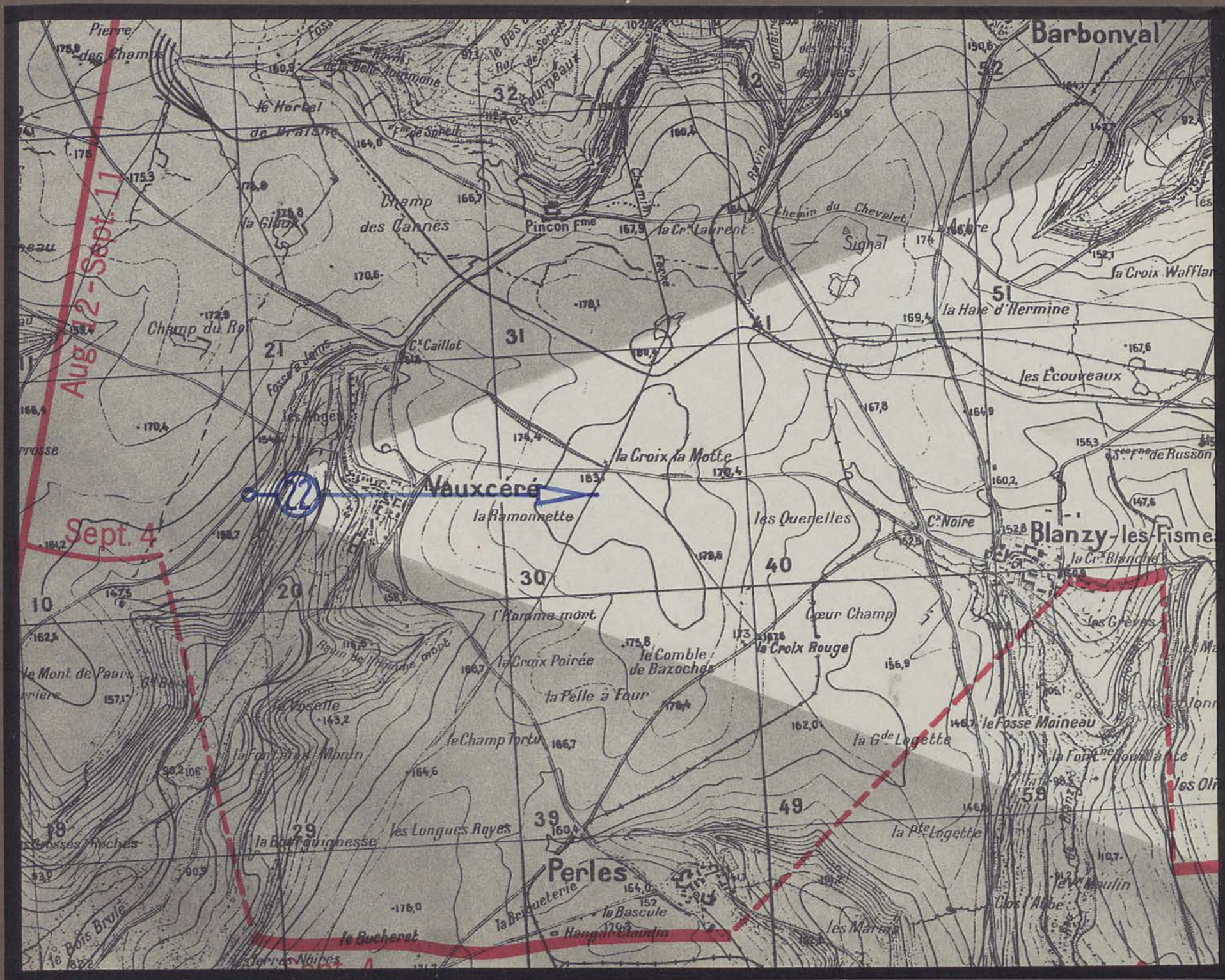


Vauxcéré

Ravin de l'Homme Mort

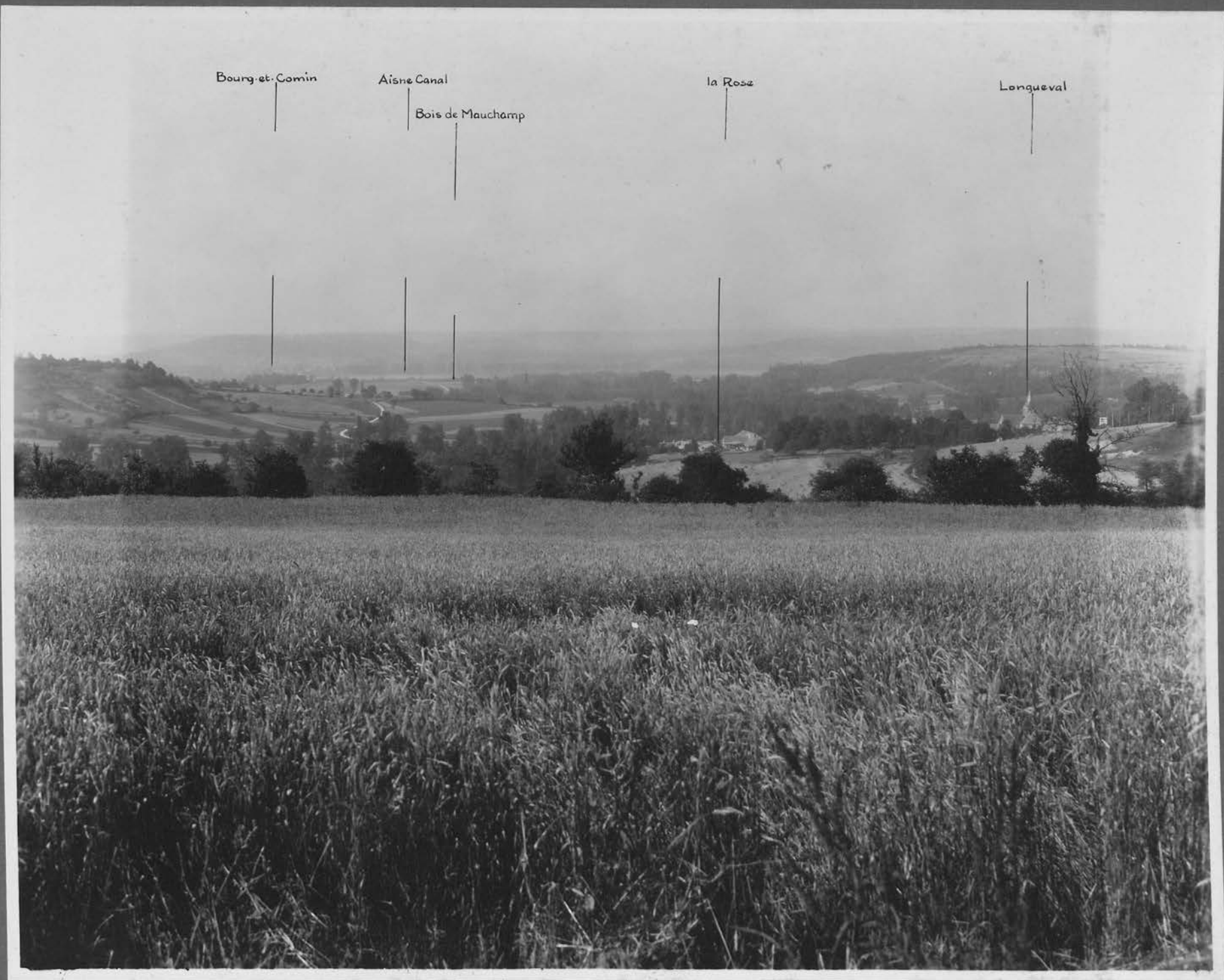
Gé Bois











Bourg-et-Comin

Aisne Canal

Bois de Mauchamp

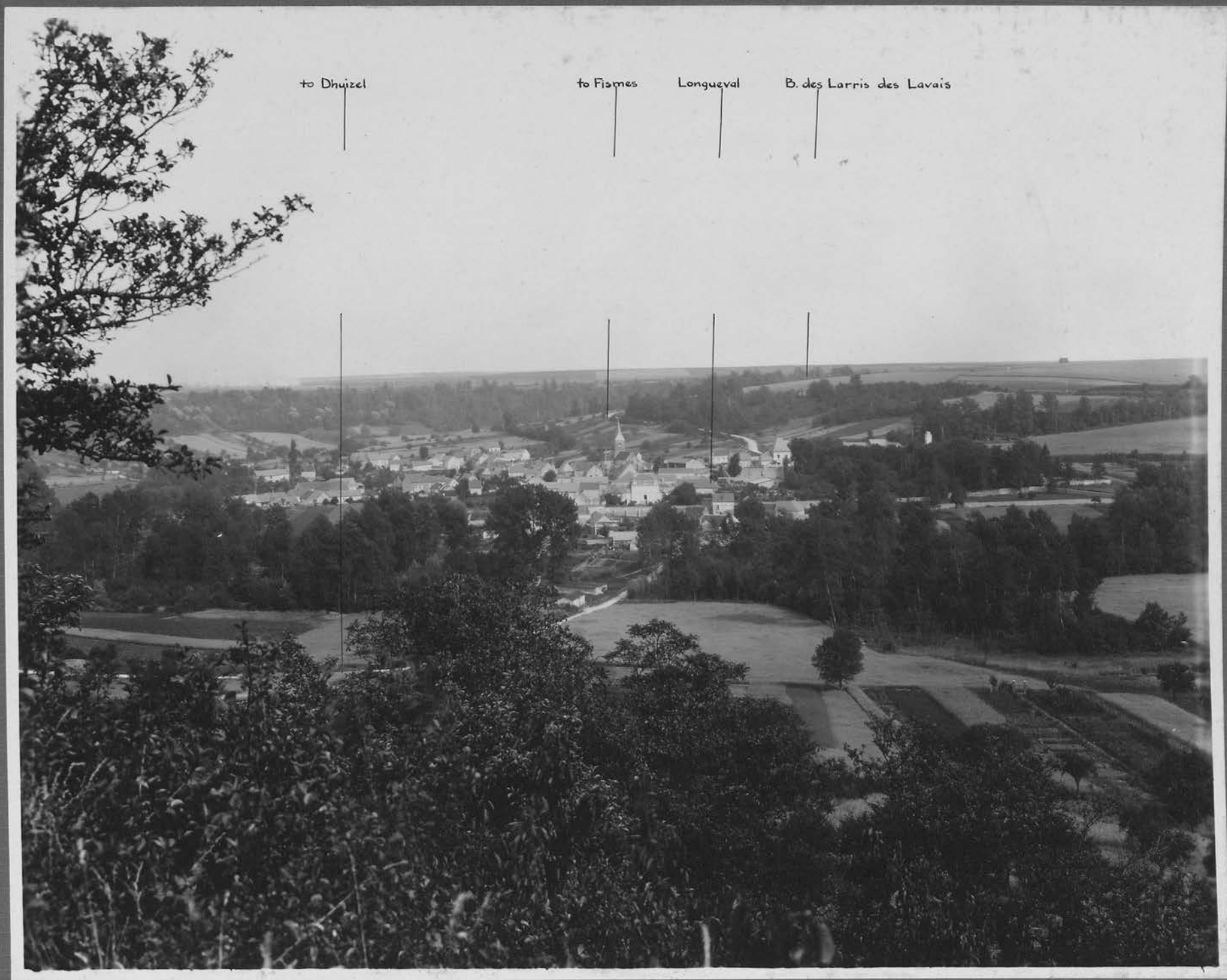
la Rose

Longueval







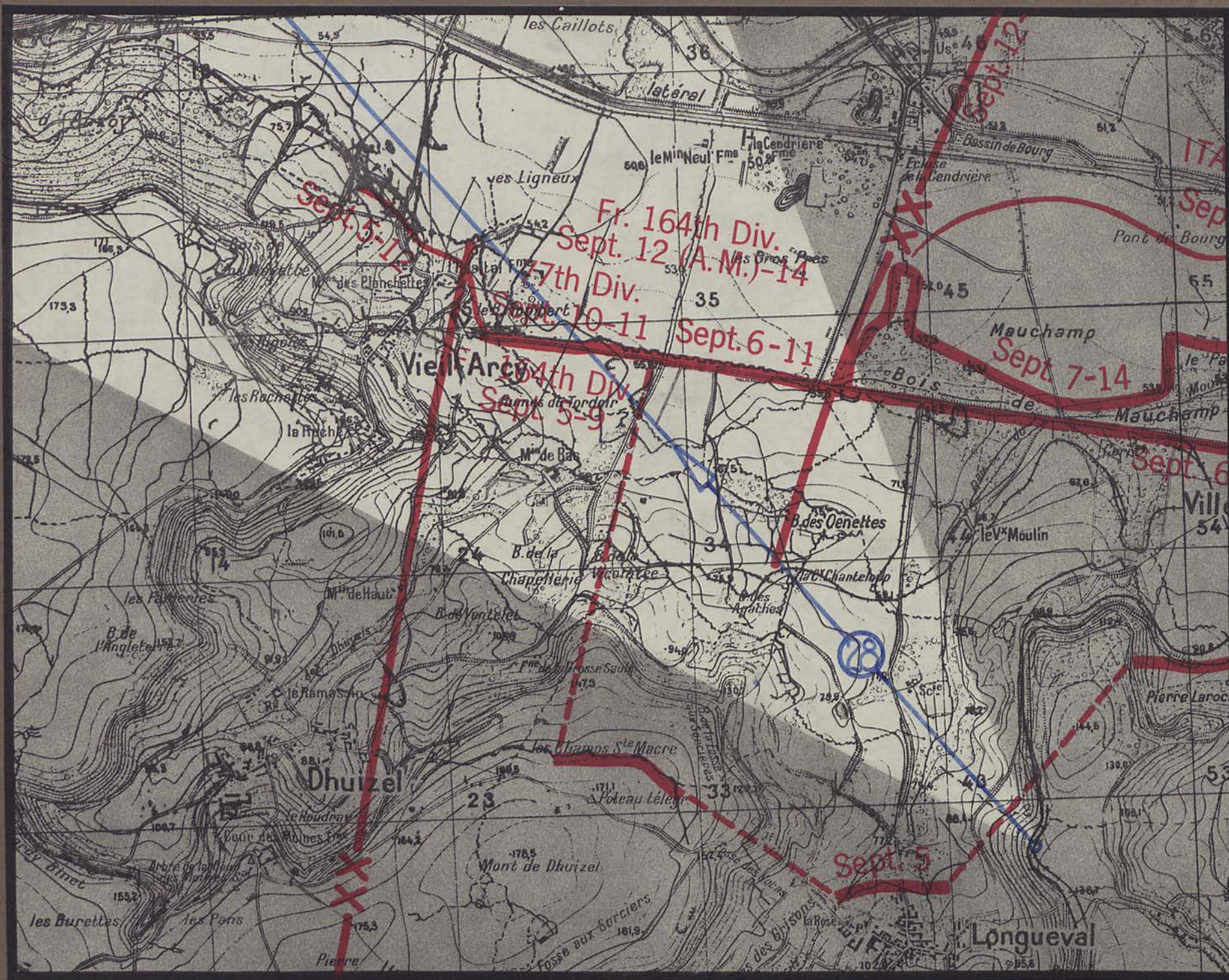






Longueval

Mont de Dhuizel



la Roche F<sup>m</sup>

Vieil-Arcy

Aisne Canal

B. des Genettes

Pont-Arcy

Bois de Mauchamp





Bouquet-Comin

Aisne-Canal

B. des Genettes

B. de Mauchamp

from Longueval

Paragnan

Oeuilly

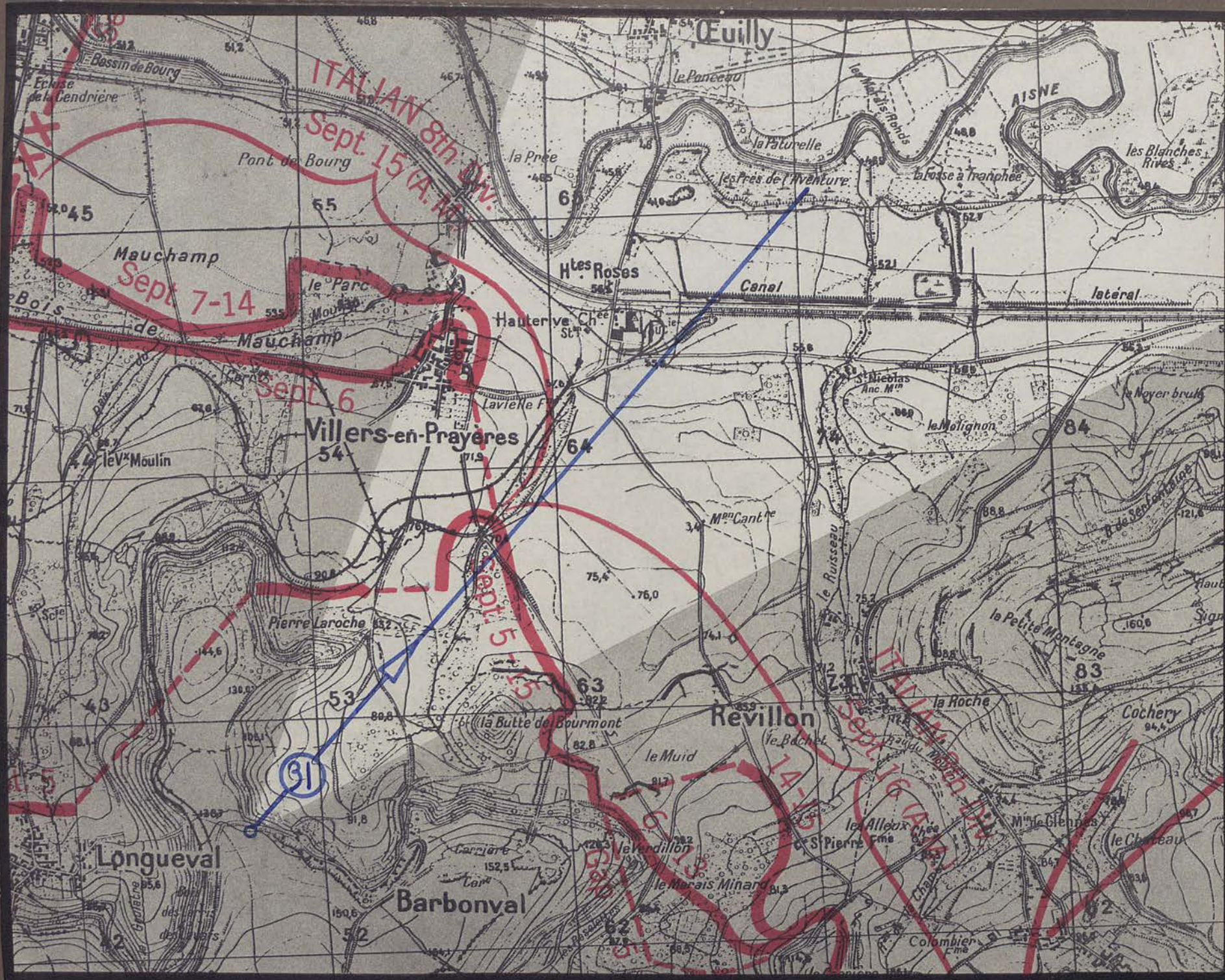




Villers-en-Prayères

Pt 144.5





Pierre Laroche

Hauterive Clée

Villers-en-Prayères - Barbonval road

Butte de Bourmont







Haut de Cuchery

Revillon

Butte de Bourmont

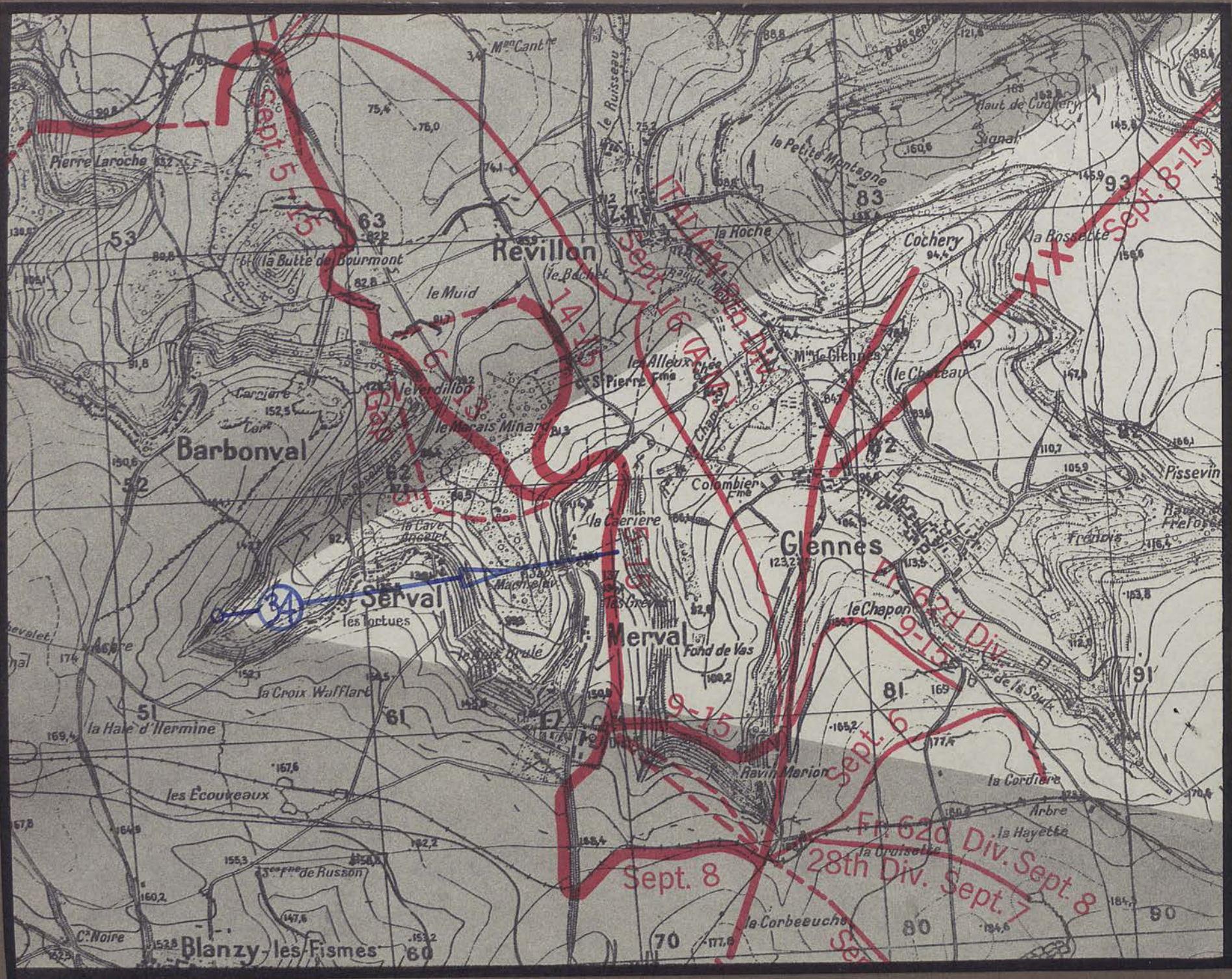




Haut de Cuchery

Réyillon

Barboval

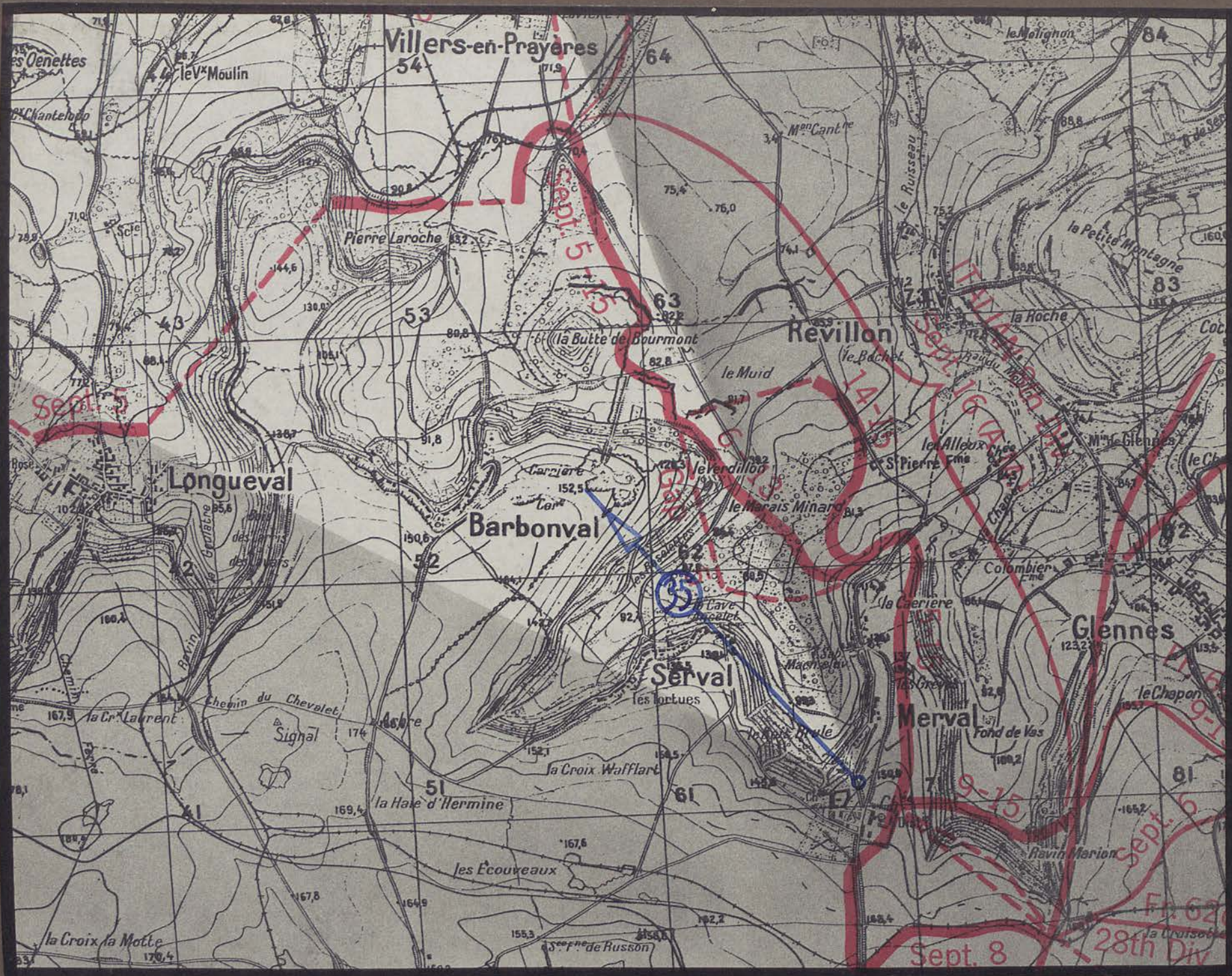




la Caerière

Mervyl Church

Serval





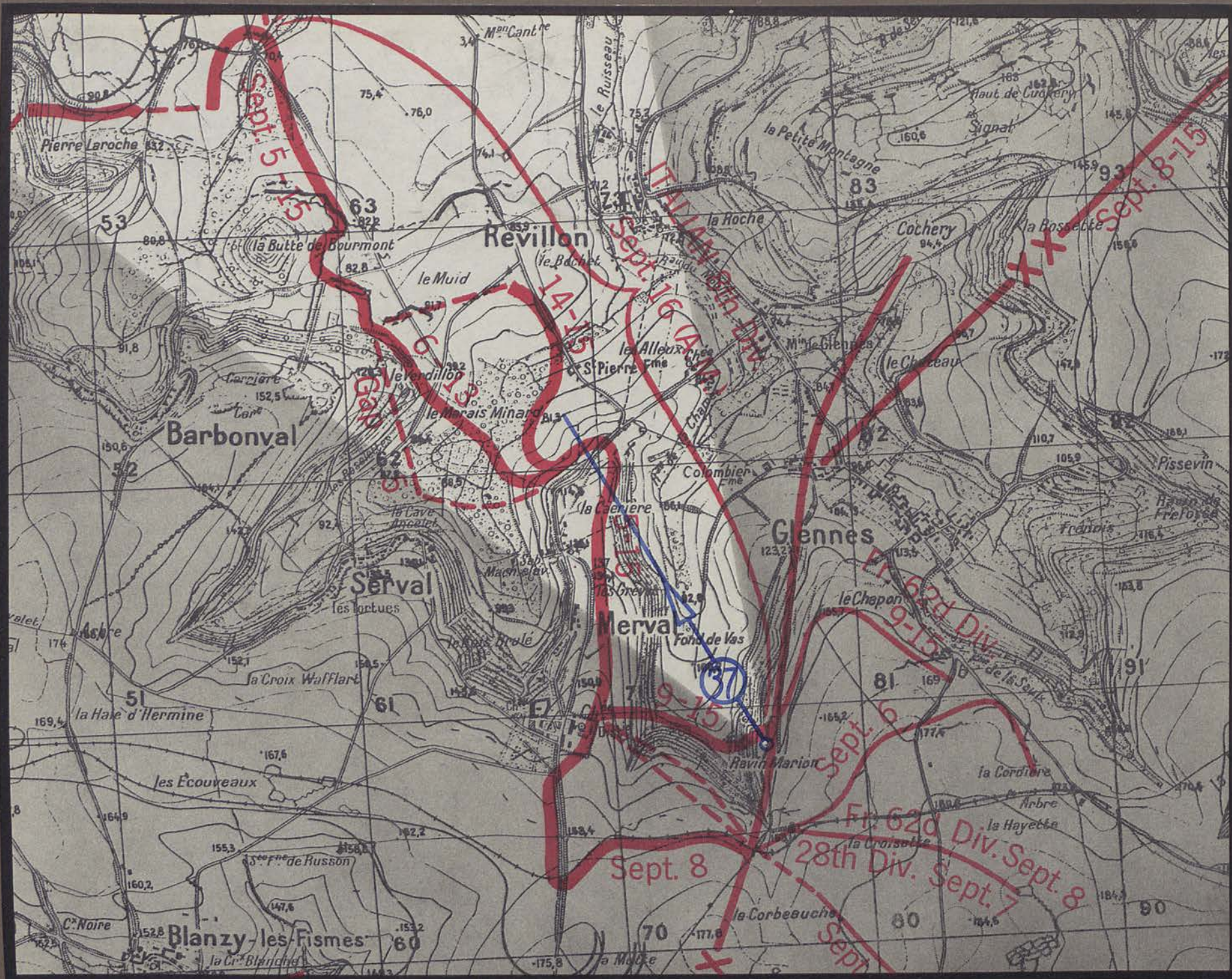




la Petite Montagne

Glennes

Haut de Cuchery



Merval Church

Réville







Revillon

St Pierre Fm

B. Brulé

la Petite Montagne

Merval



Beaurieux

Révilleon

Haut de Cuchery

St Pierre F<sup>m</sup>

M<sup>o</sup> de Glennes



COMMAND

COMBINED ARMS RESEARCH LIBRARY  
FORT LEAVENWORTH, KS

00L



3 1695 00464 6816

### LIBRARY REGULATIONS

1. Books, pamphlets, and periodicals must be charged at the loan desk (signature on book-loan card) before being taken from the library.

2. Any item drawn from the Library must be returned within one month.

Exceptions to this regulation are as follows:

- (1) Material issued to classes as a whole.
- (2) Material issued to instructors for professional use.
- (3) New books which are in demand must be returned within one week.
- (4) Books required for faculty use are subject to recall at any time.
- (5) All persons having library material in their possession will return same before leaving the post permanently.
- (6) Books loaned outside the School must be returned within two weeks.

75 3. Reference books and current periodicals will not be removed from the Library.

LIBRARY  
COMMAND  
AND  
STAFF  
COLLEGE

