

TERRAIN PHOTOGRAPHS
AMERICAN WORLD WAR BATTLEFIELDS
IN EUROPE

35TH DIVISION

GRANGE-LE-COMTE SECTOR
SEPTEMBER 21-25, 1918

MEUSE-ARGONNE OFFENSIVE
SEPTEMBER 26-OCTOBER 3, 1918

PREPARED BY
THE AMERICAN BATTLE MONUMENTS
COMMISSION

THE COMMAND AND STAFF COLLEGE

LIBRARY



Class Symbol M 9403-H6-C.73-G3-C35

Accession Number N 69603

PREFACE

THIS album is part of a collection of photographs of the various battlefields in Europe upon which the Armed Forces of the United States were actively engaged during World War I.

These terrain photographs were taken and prepared by the American Battle Monuments Commission, as provided in the act of Congress of March 4, 1923, to complete the historical record of the operations of the American units. The series comprises 69 albums containing 1,396 photographs.

The contents of these albums will be of particular value when studied in conjunction with the Summaries of Operations, prepared by the American Battle Monuments Commission, which relate in detail the combat services of each American division.

On the page preceding the photographs will be found a small-scale key map showing the general operation of which this divisional operation was a part. In the pocket inside the back cover will be found a reprint of a 1:20,000 map, of the type used during the war, showing the operation covered by the photographs in this

album. On this index map have been indicated the position of the camera and the direction in which it was sighted in taking each photograph.

On the page opposite each photograph is a section of the 1:20,000 map of the terrain in the vicinity of that pertaining to the photograph. The white wedge-shaped portion of the map indicates the sector of terrain which actually appears in the picture. The plotted position of the camera and the axis of the picture are shown in blue, the length of the blue line approximately indicating the depth of the view. The circled number corresponds to the number of the photograph, of which the numerals before the dash indicate the division and the numerals after the dash indicate the serial number of the photograph in this division.

Various topographical features visible in the photographs have been indicated by name to facilitate orientation.

Complete sets of these albums have been deposited with the National Archives, the Library of Congress, the Historical Division of the War Department General Staff, and the Command and Staff College.

AMERICAN BATTLE MONUMENTS COMMISSION,

John J. Pershing
CHAIRMAN

NOV 22 1945

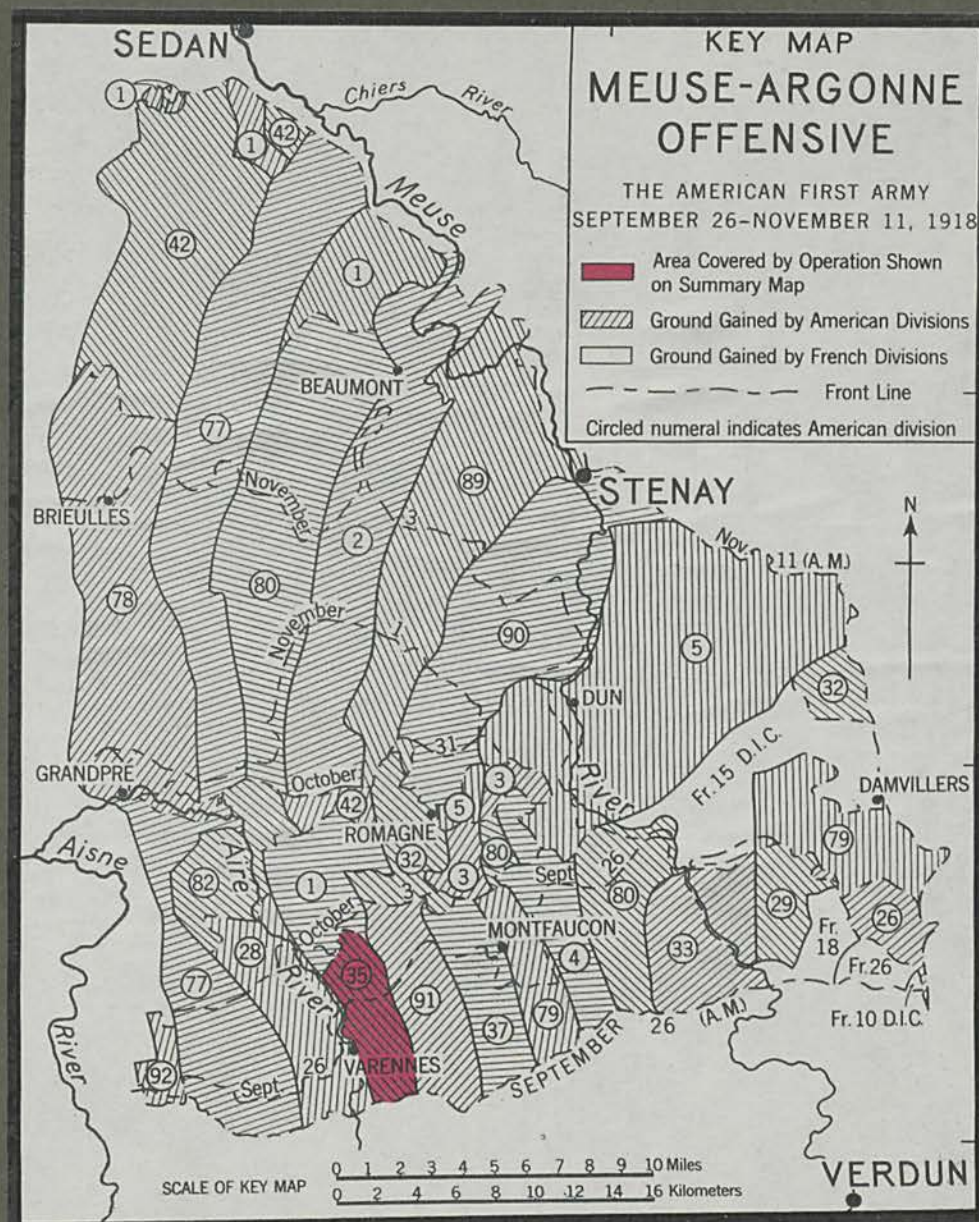
35TH DIVISION

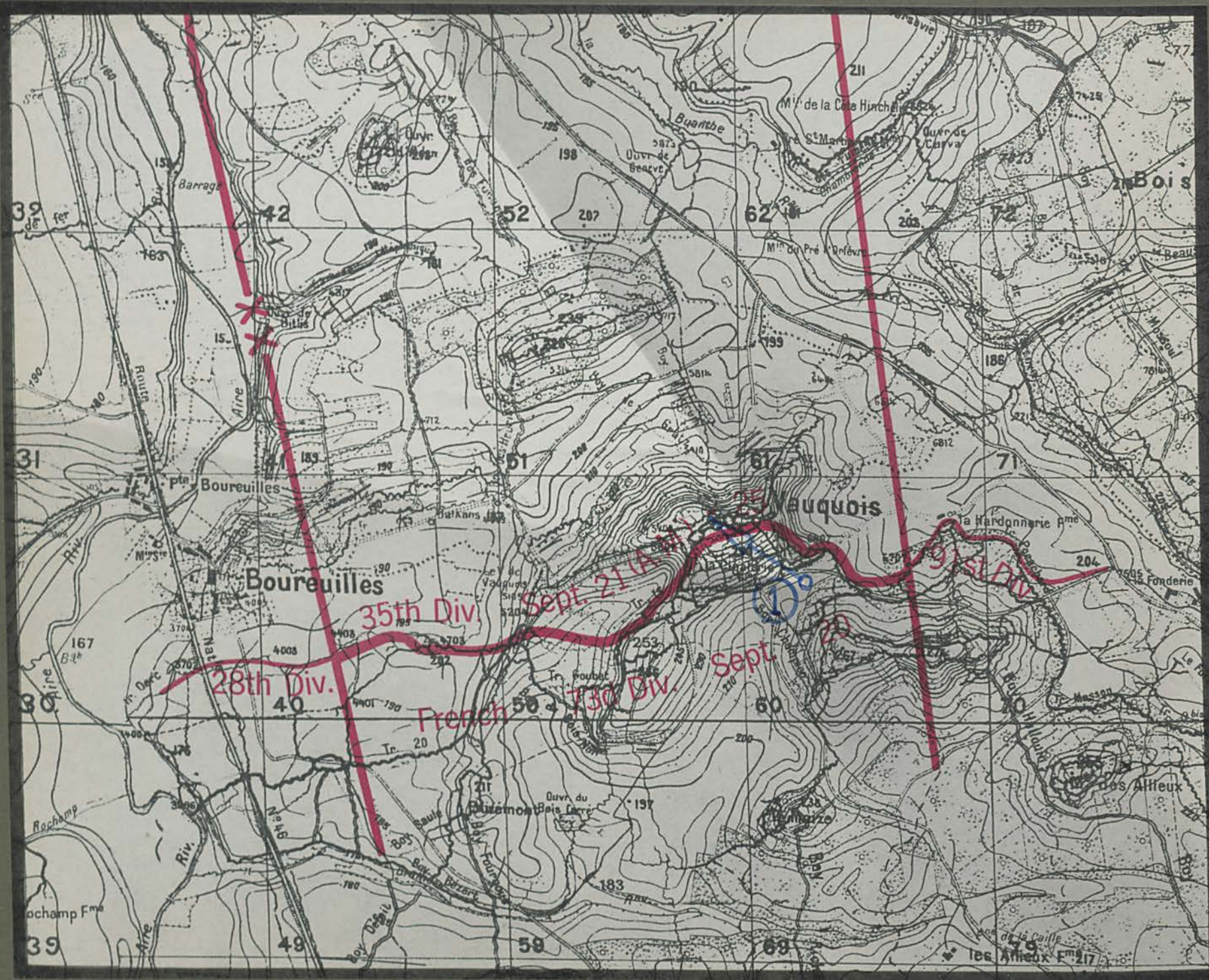
GRANGE-LE-COMTE SECTOR

SEPTEMBER 21-25, 1918

MEUSE-ARGONNE OFFENSIVE

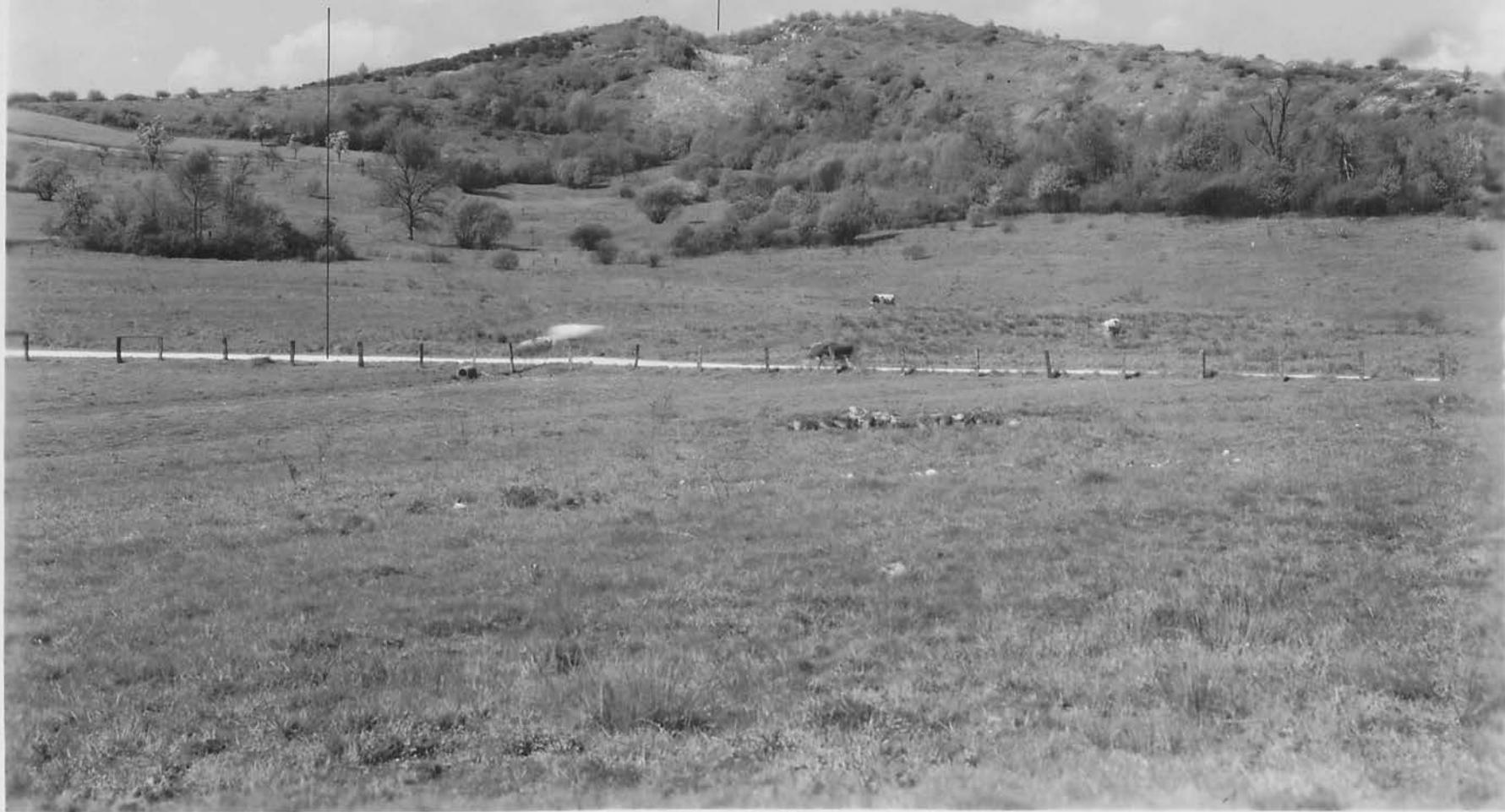
SEPTEMBER 26—OCTOBER 3, 1918

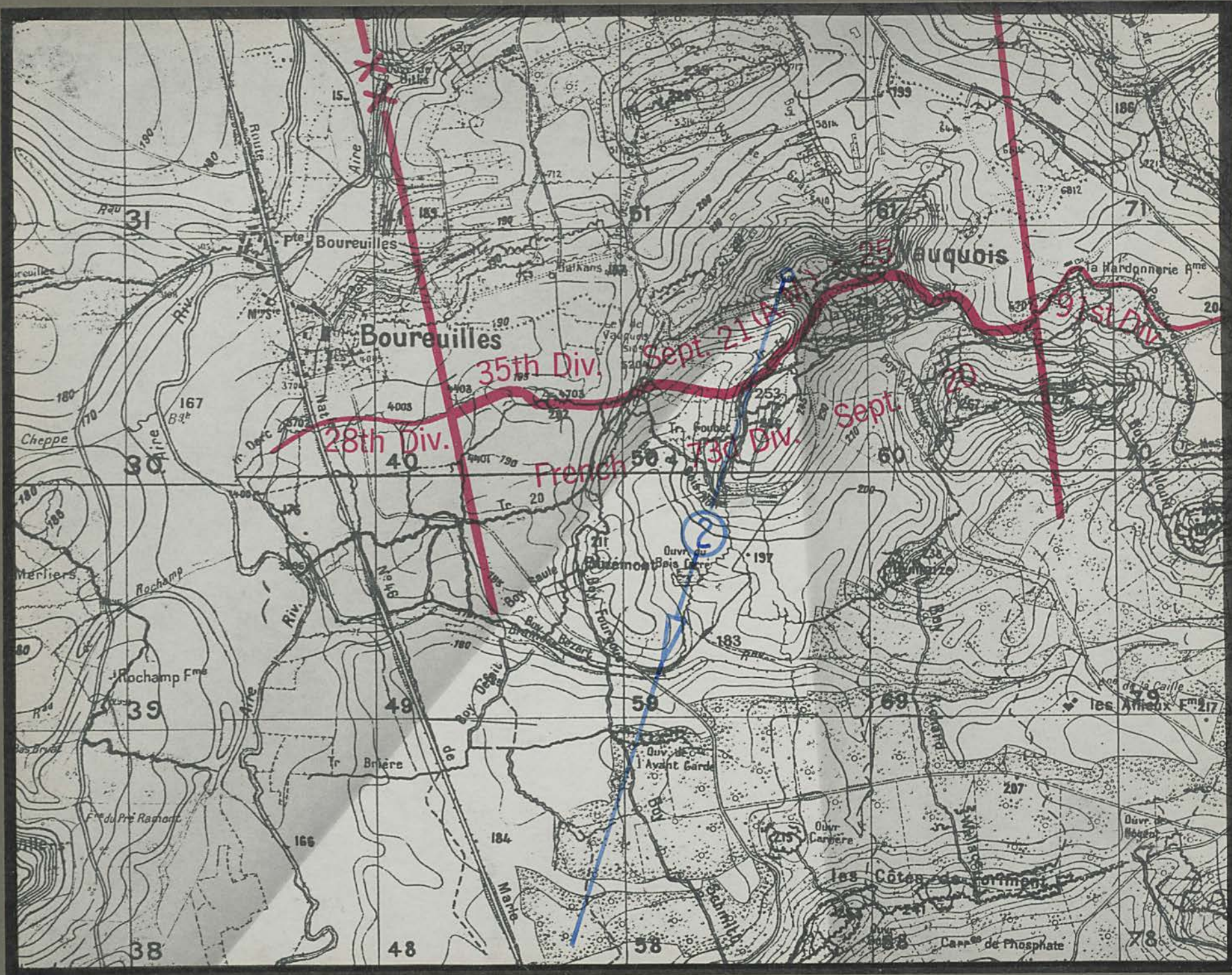




Boureuilles - la Fonderie Fm^e road

Vauquois



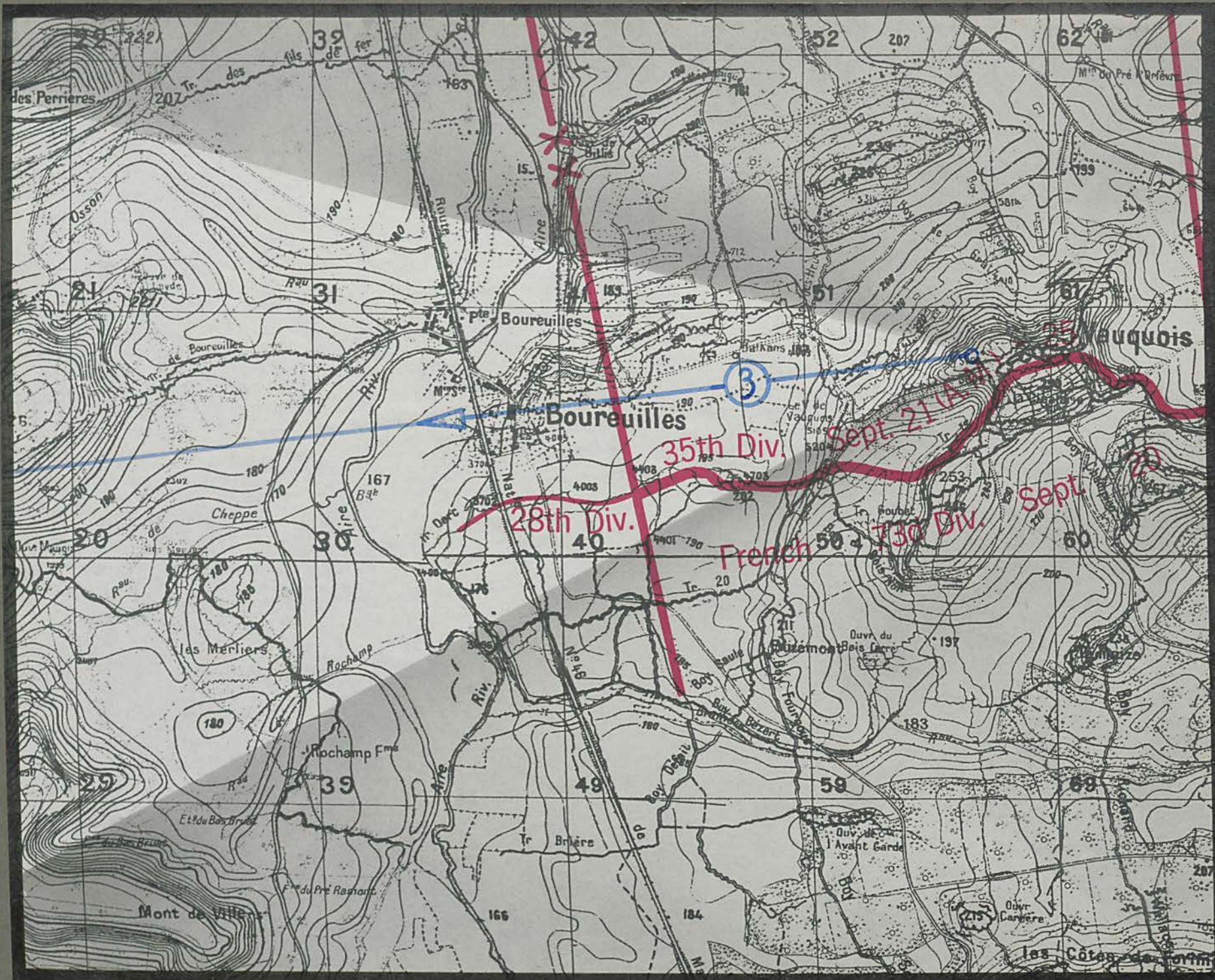




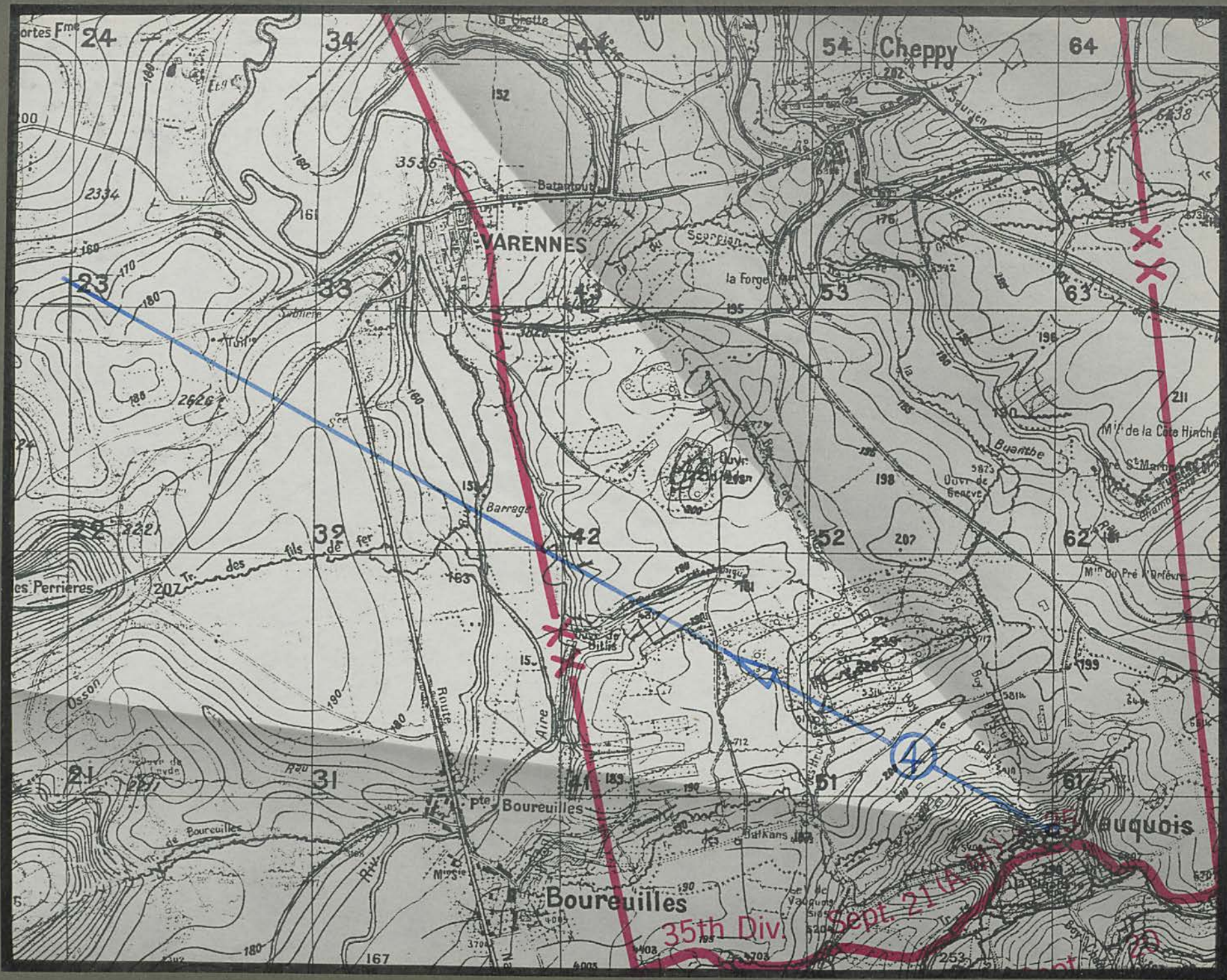
Côte 253

Route Nat^{le} 46

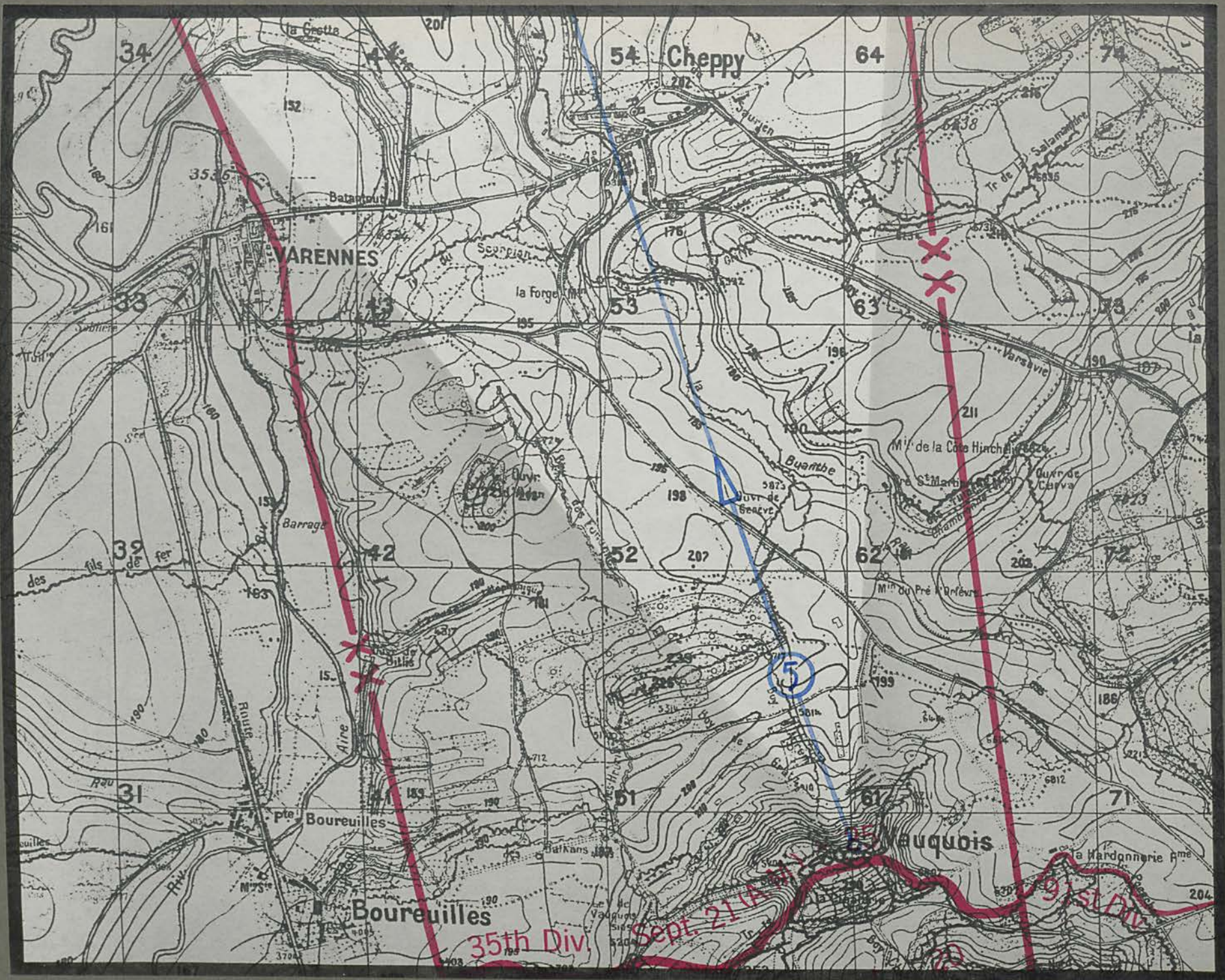
Buzémont





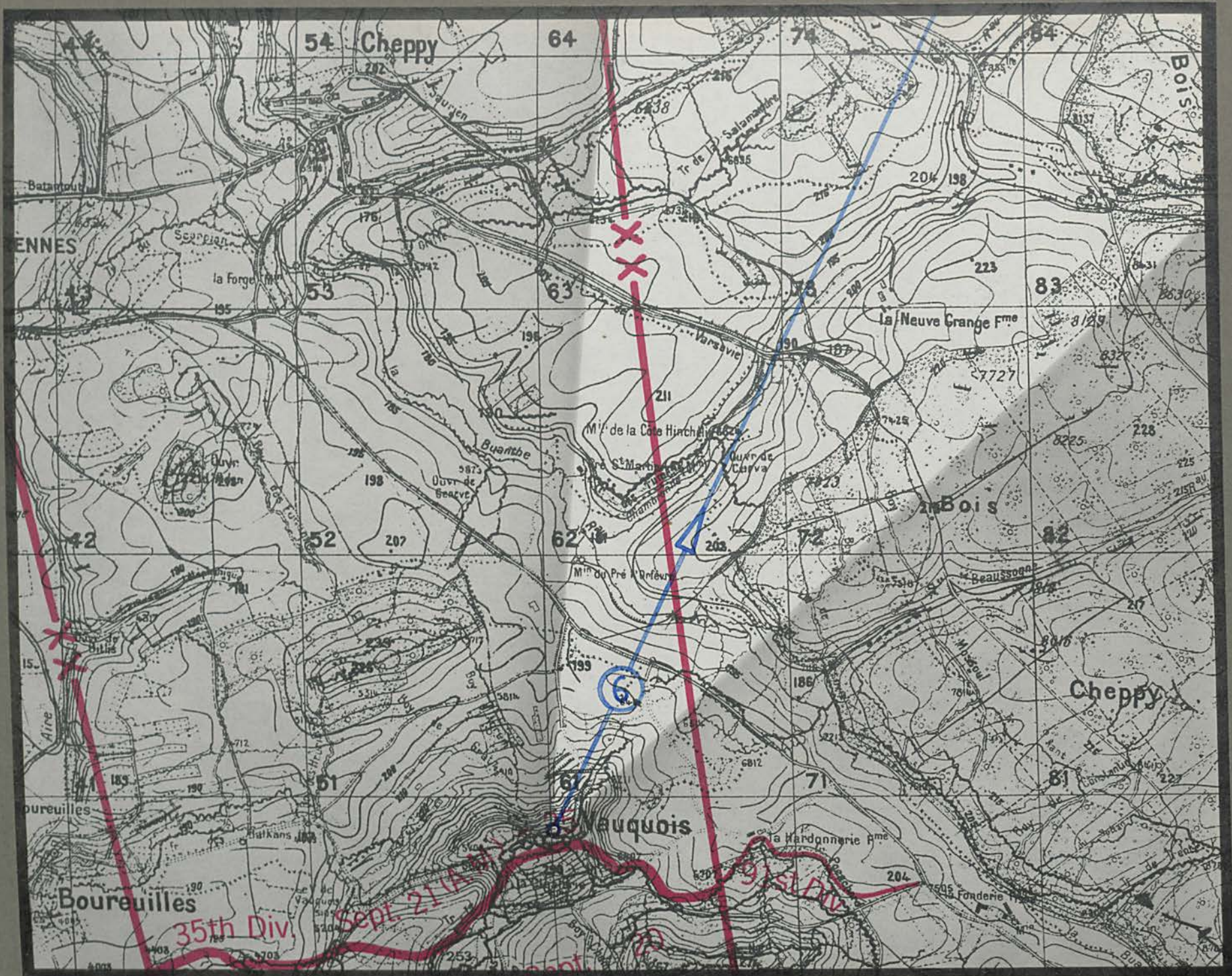




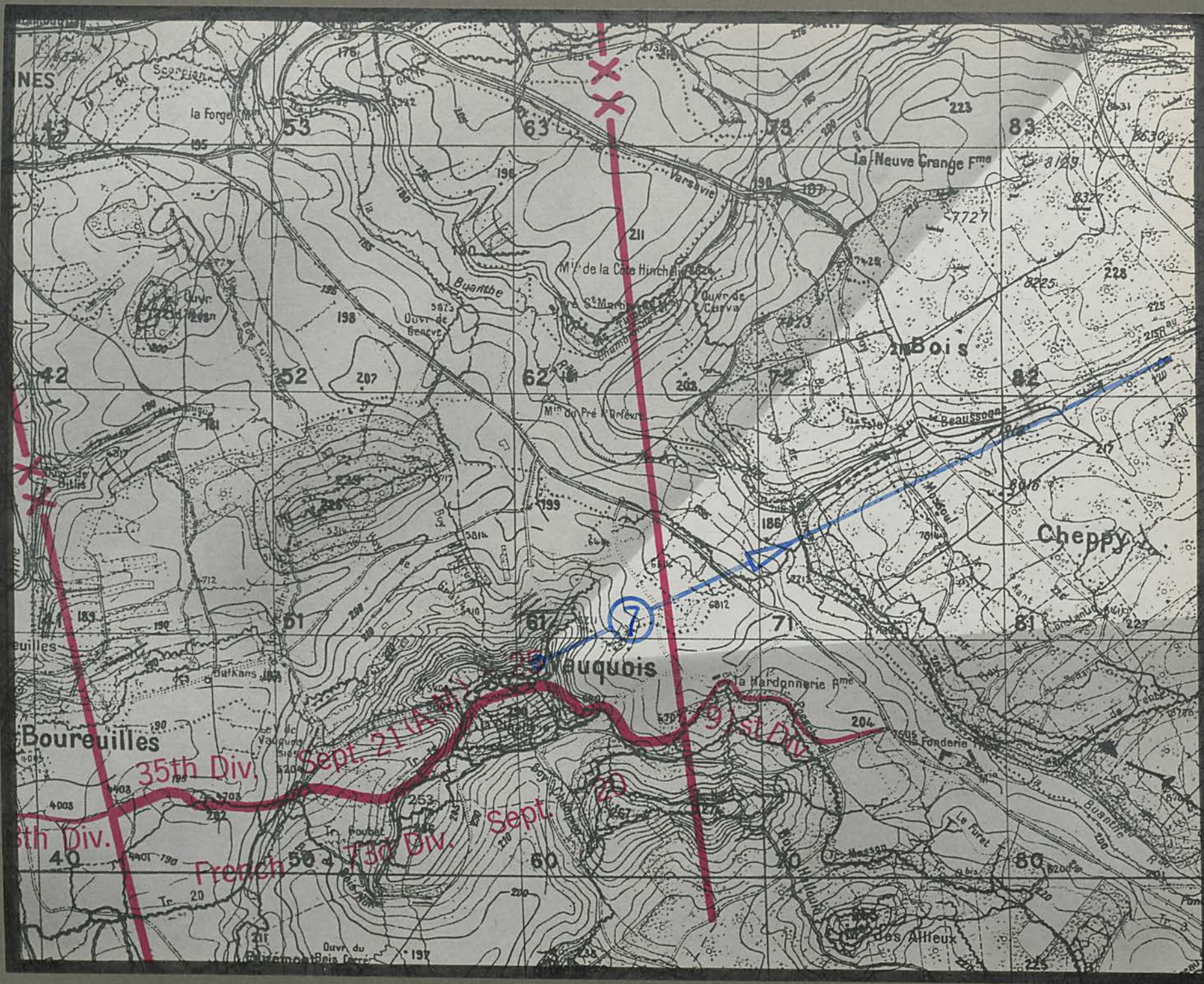


Montblainville	St Juvin	Montrebeau	Côte 240		Côte 269	Cheppy-Véry road	Côte Dame Marie	Bois Emont
Varenes	Baulny	Route Natle N° 46	Charpentry Varenes-Avocourt road	Côte 272	Cheppy	Charpentry-Eclisfontaine road Serieux Fme Tronsol Fme	Eclisfontaine Véry-Epinonville road	











Bois de Véry

Bois de Cheppy

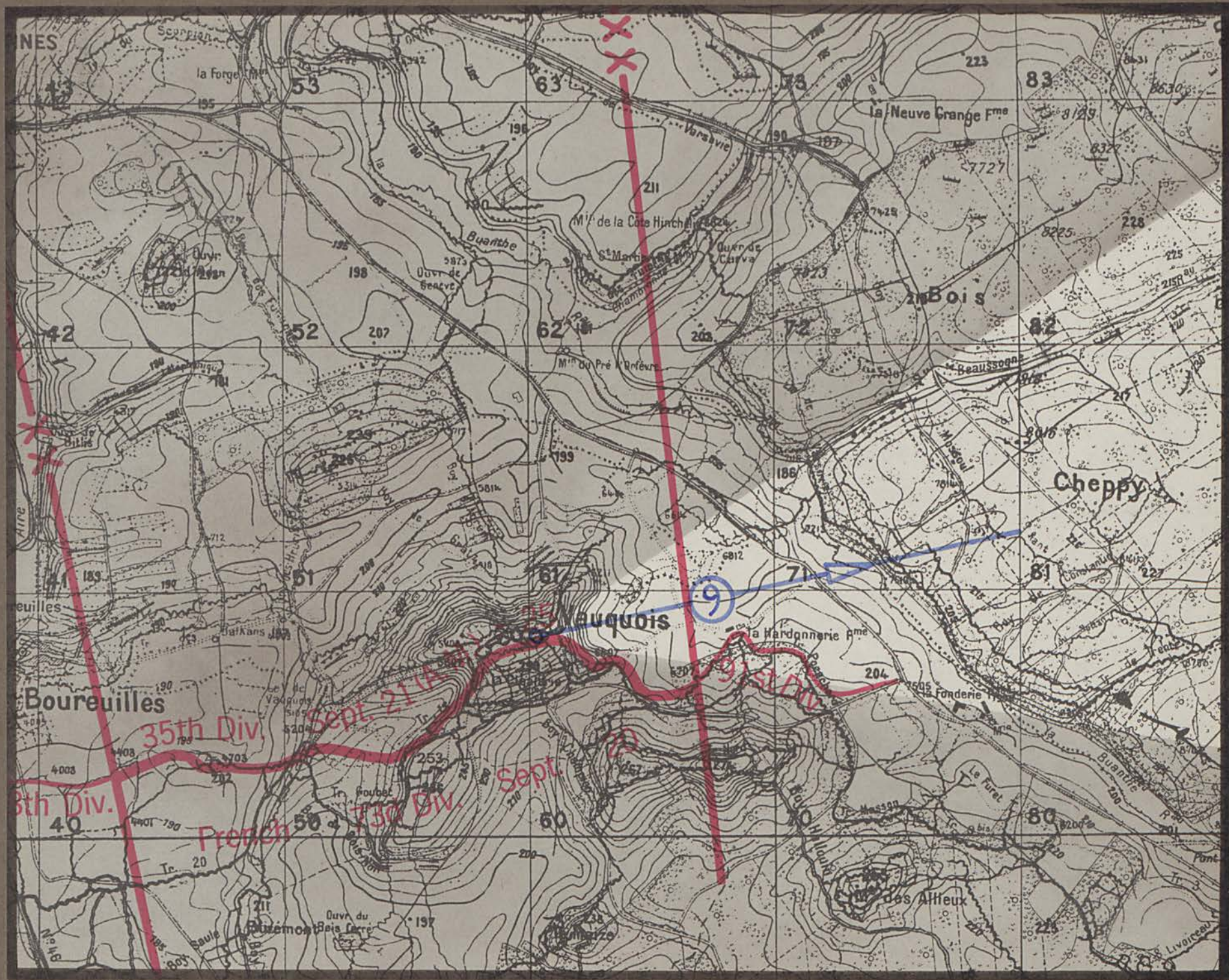
road to Vauquois

Varennes-Avocourt road

trail to Hardomerie Fms.

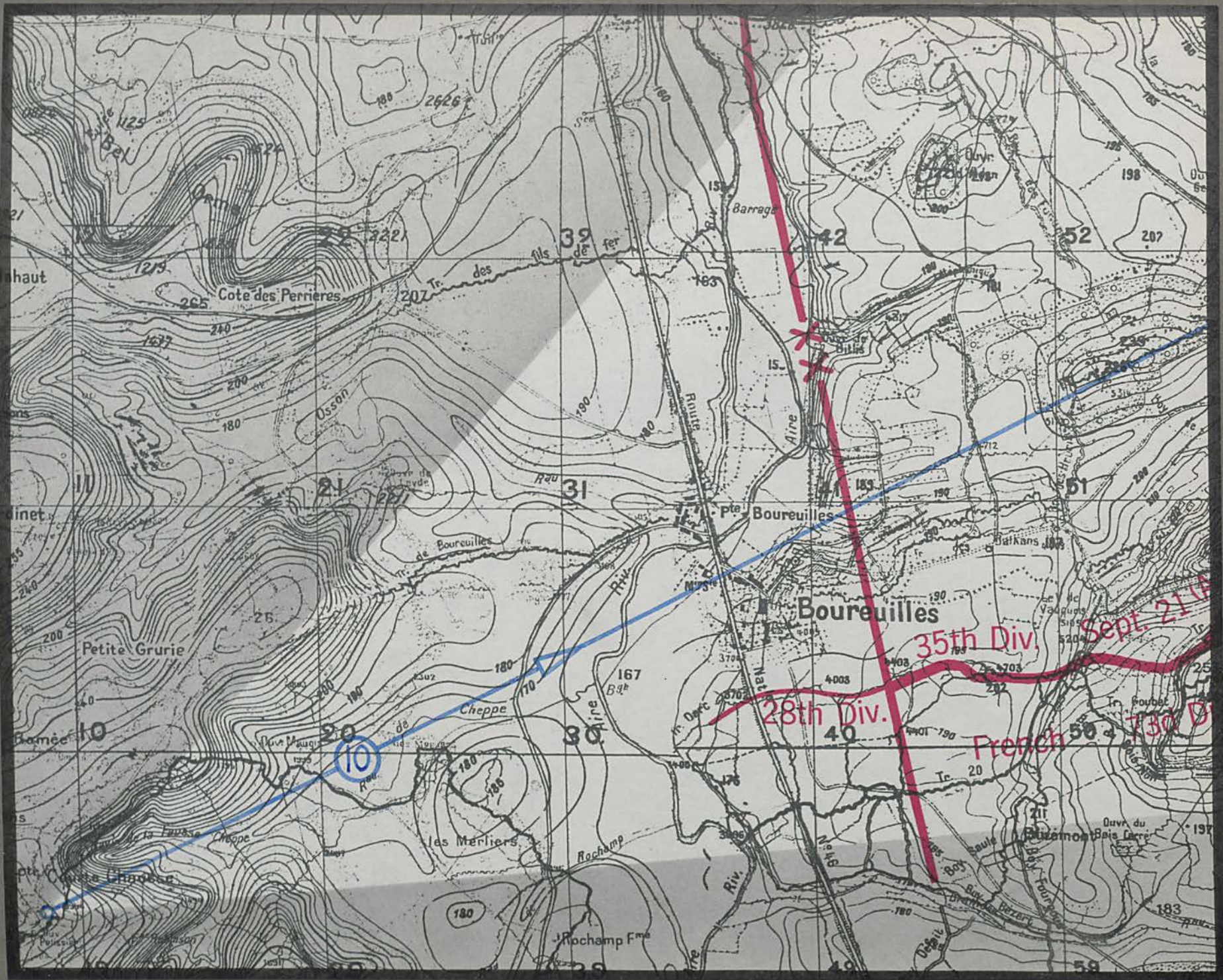




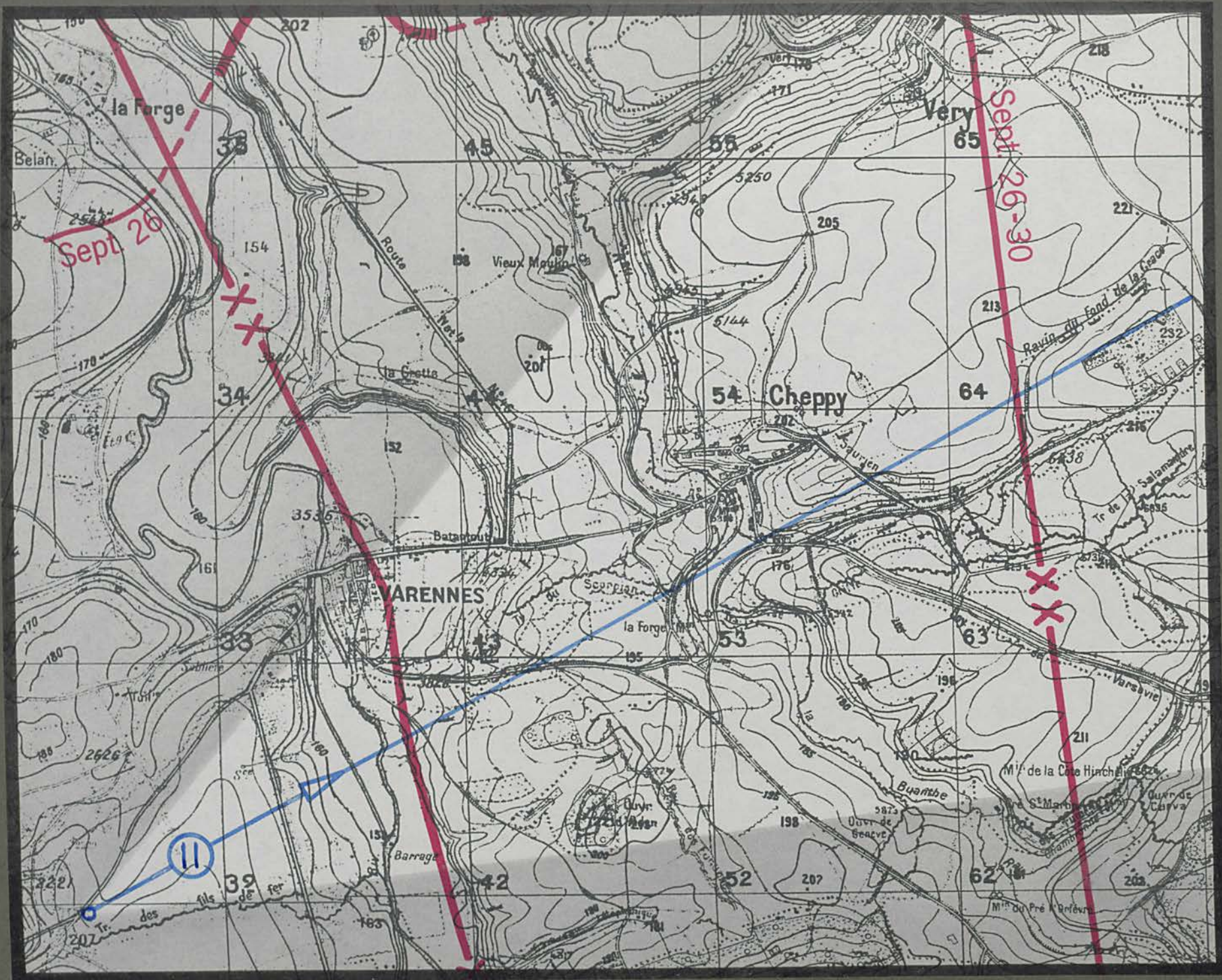


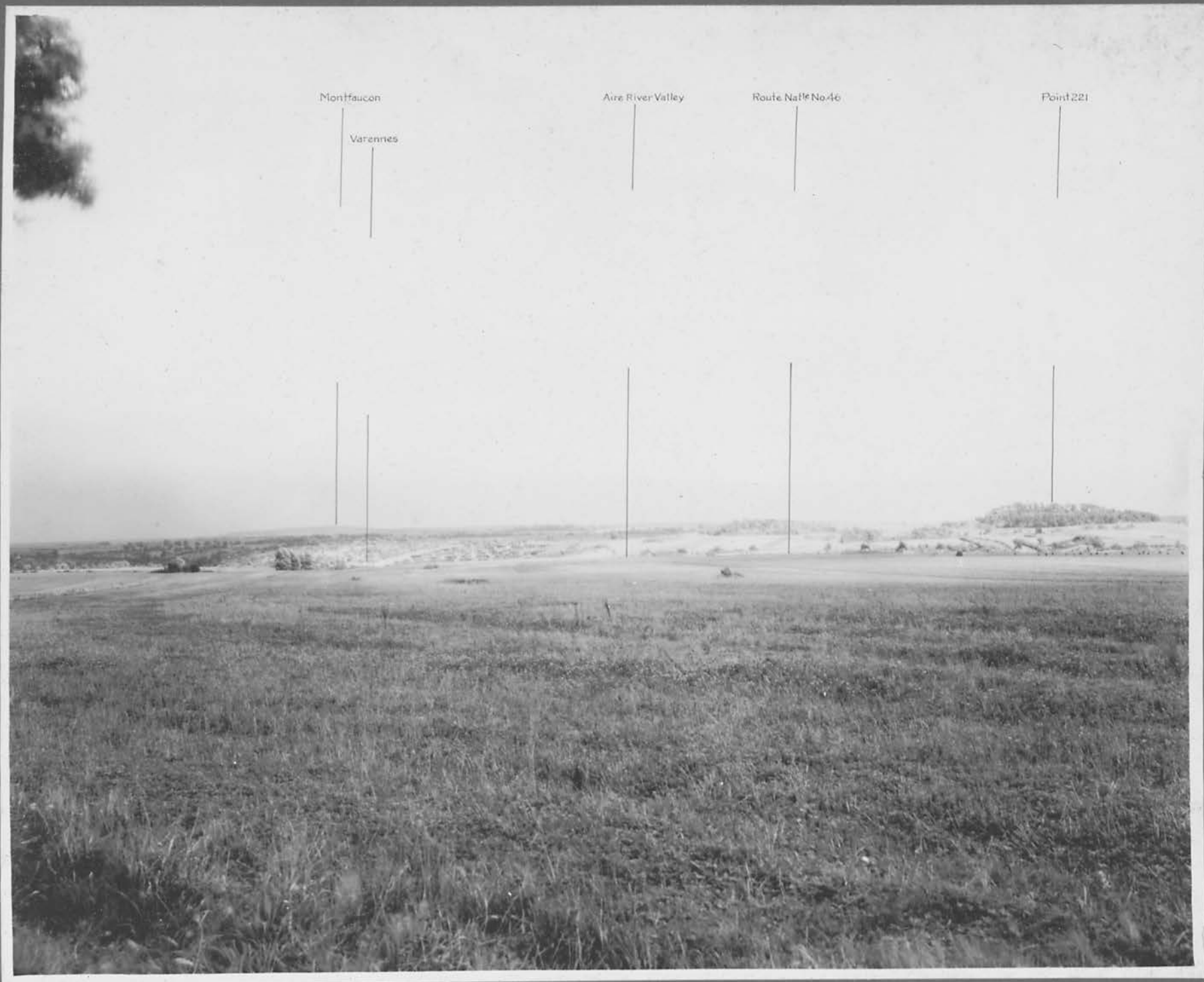


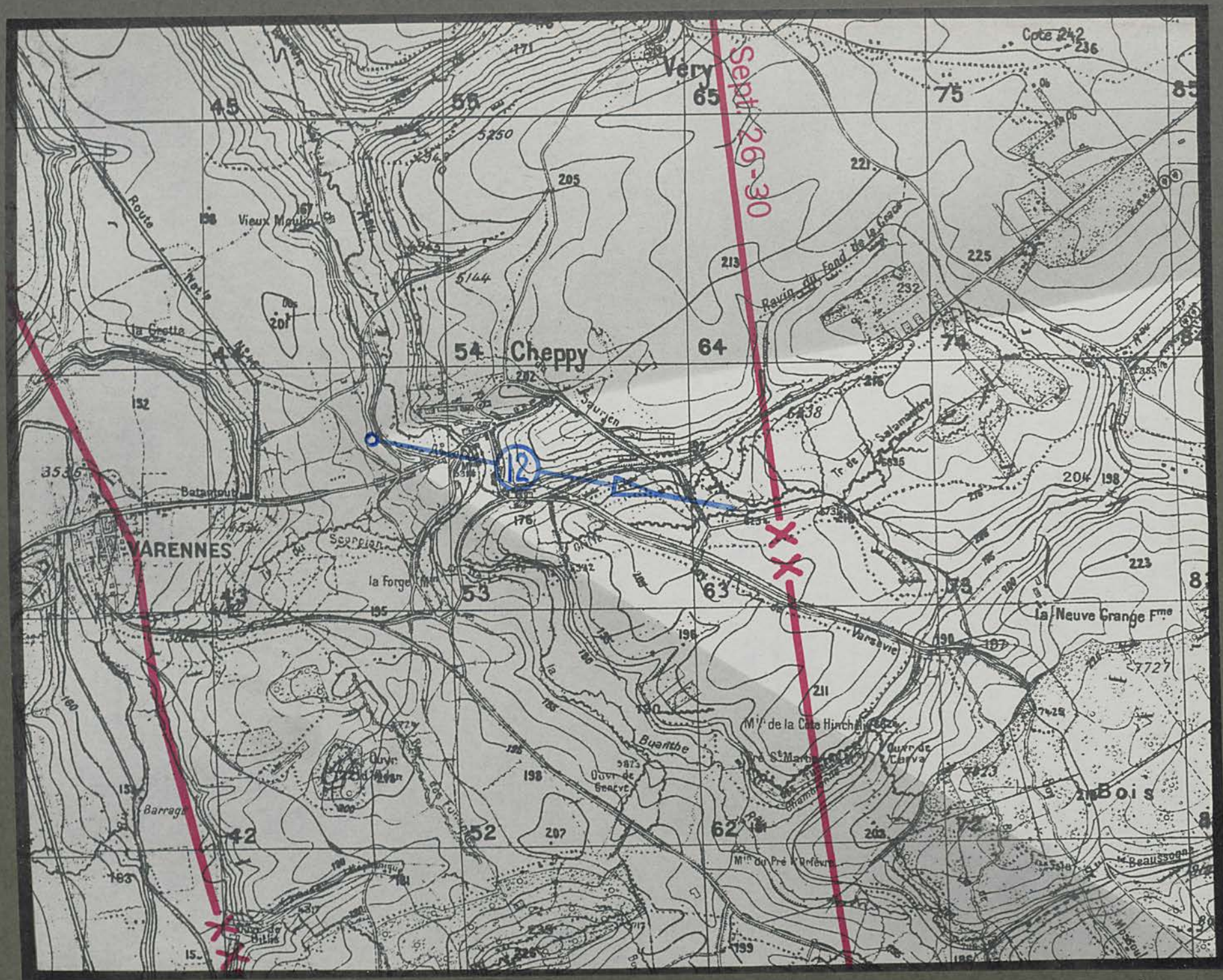
Mine crater - Vauquois



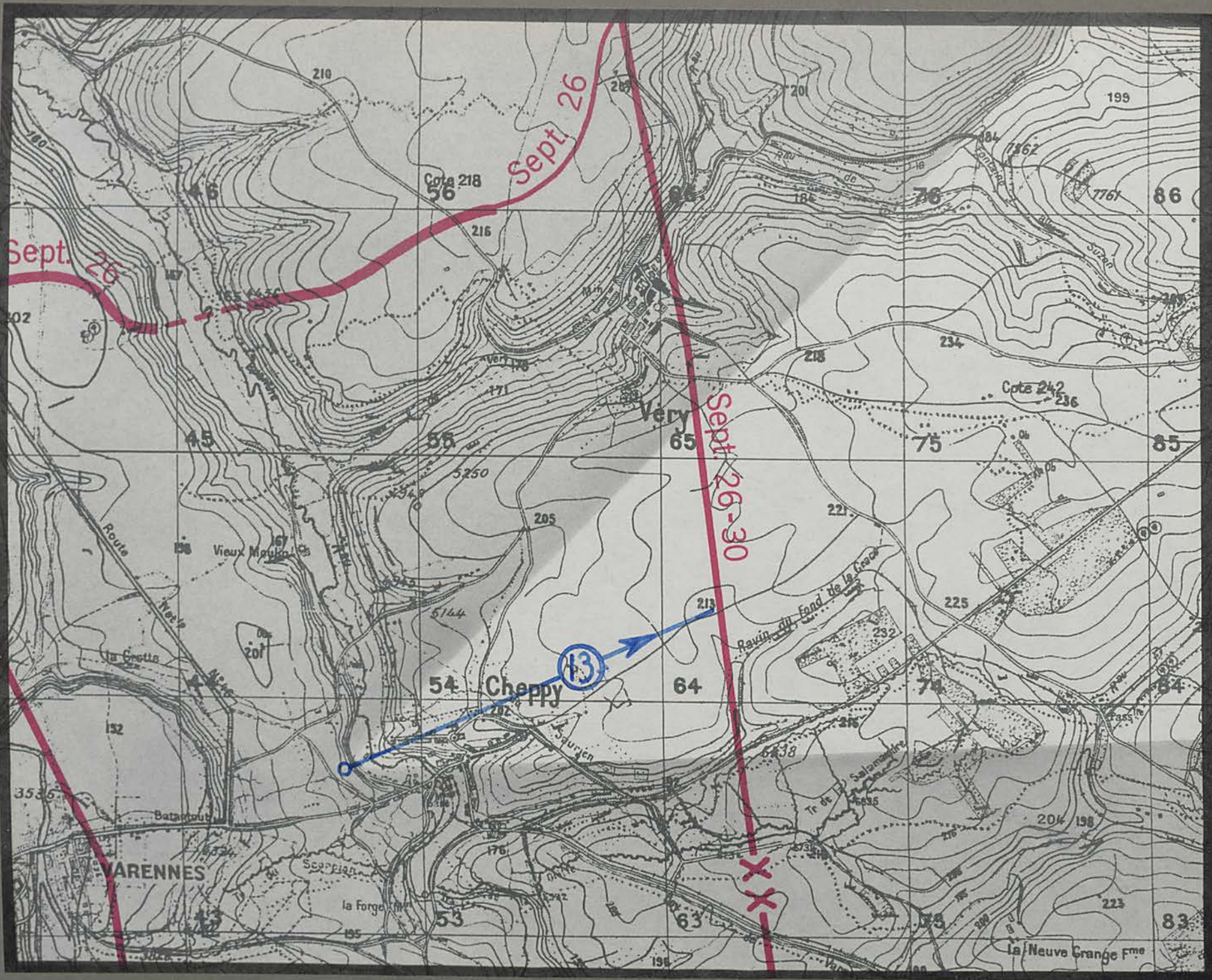






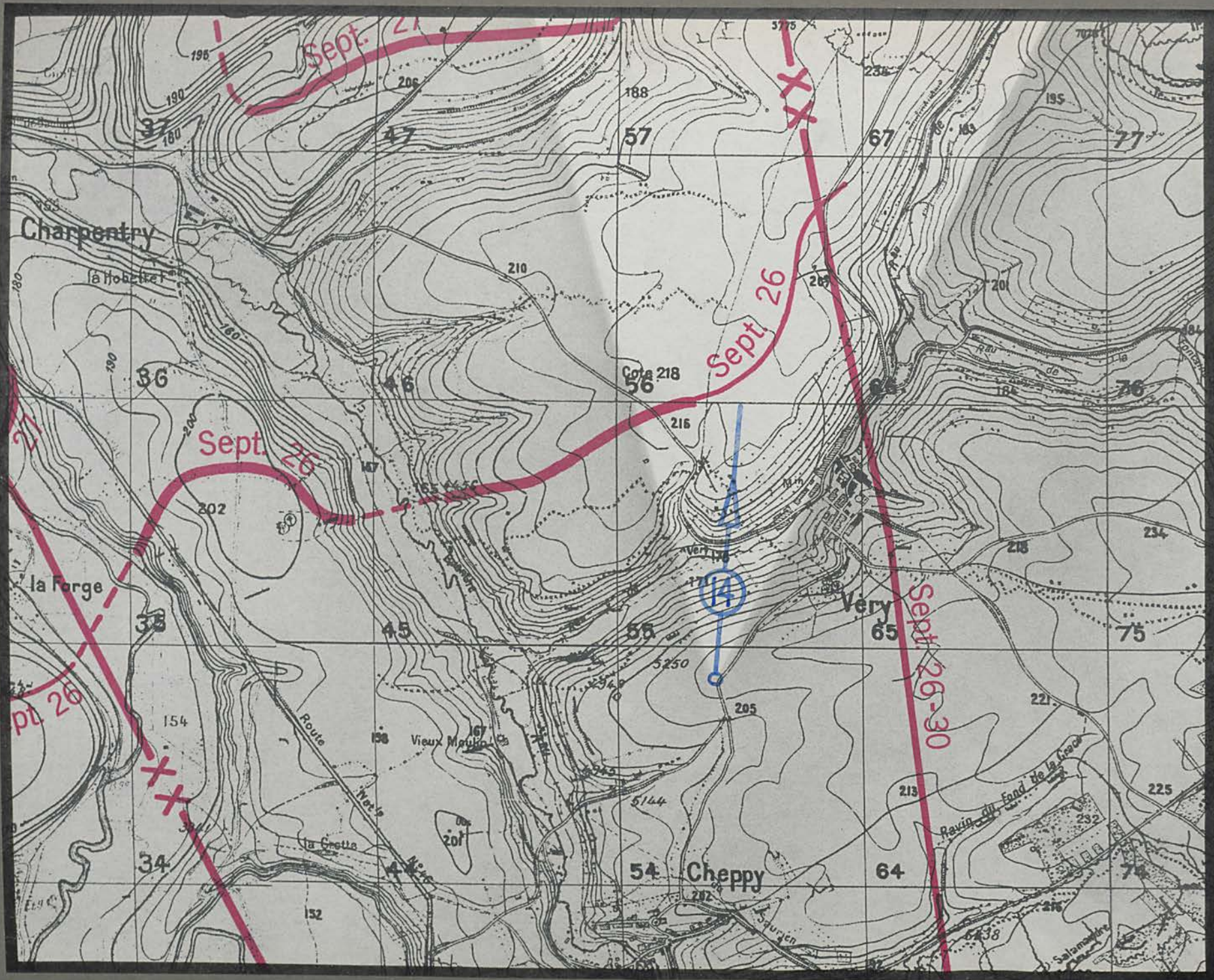








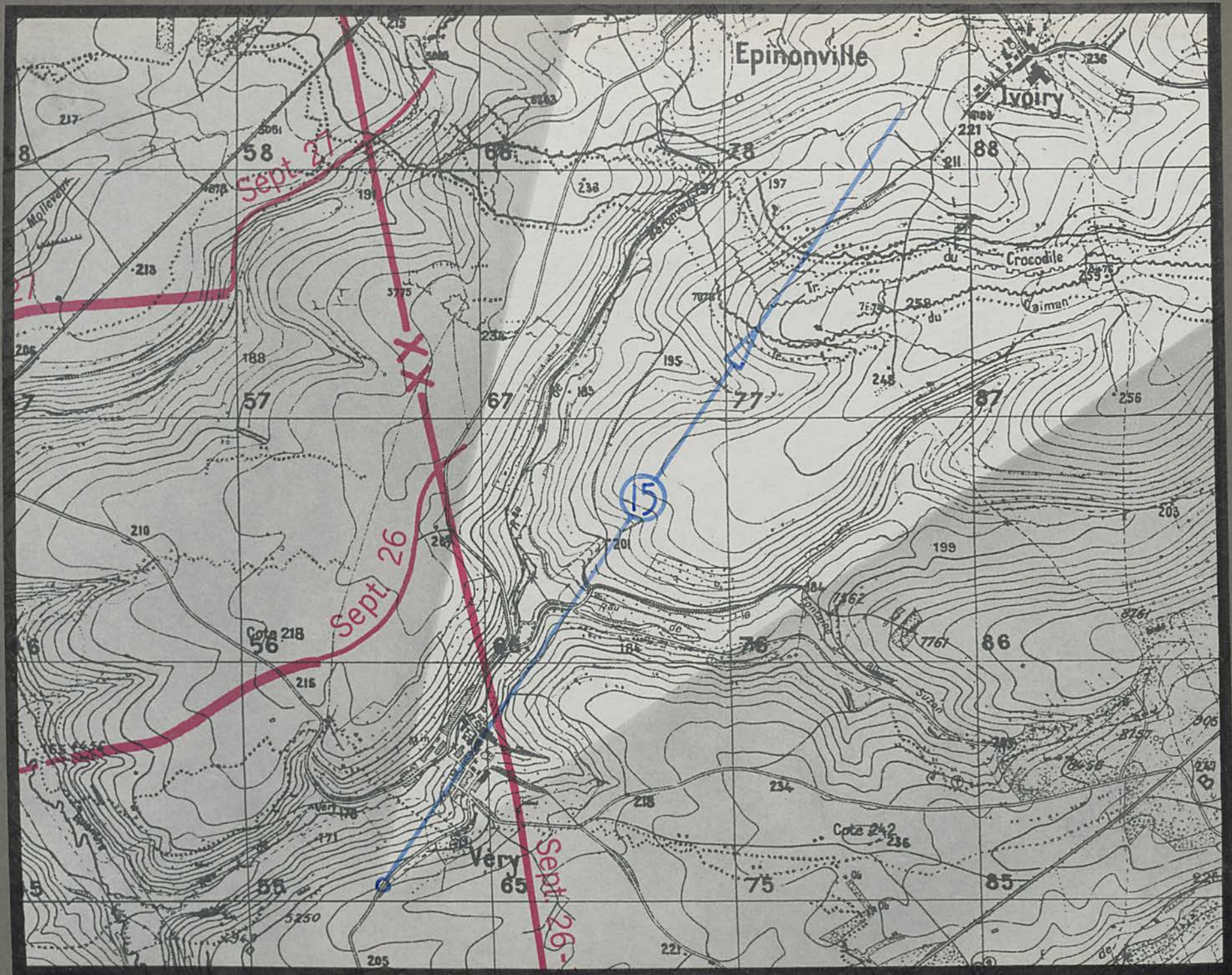
Cheppy



Charpentry - Véry road

Côte 218



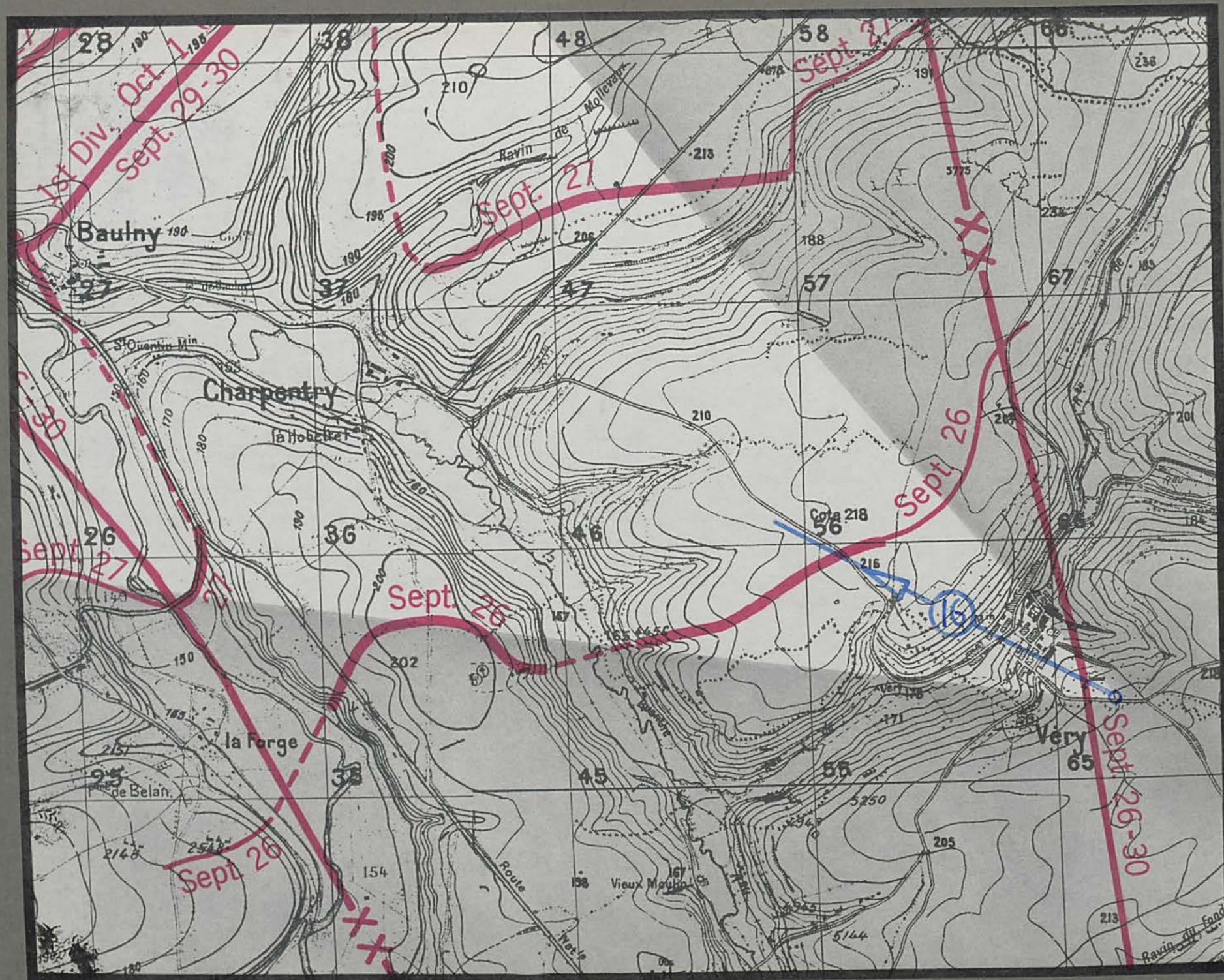




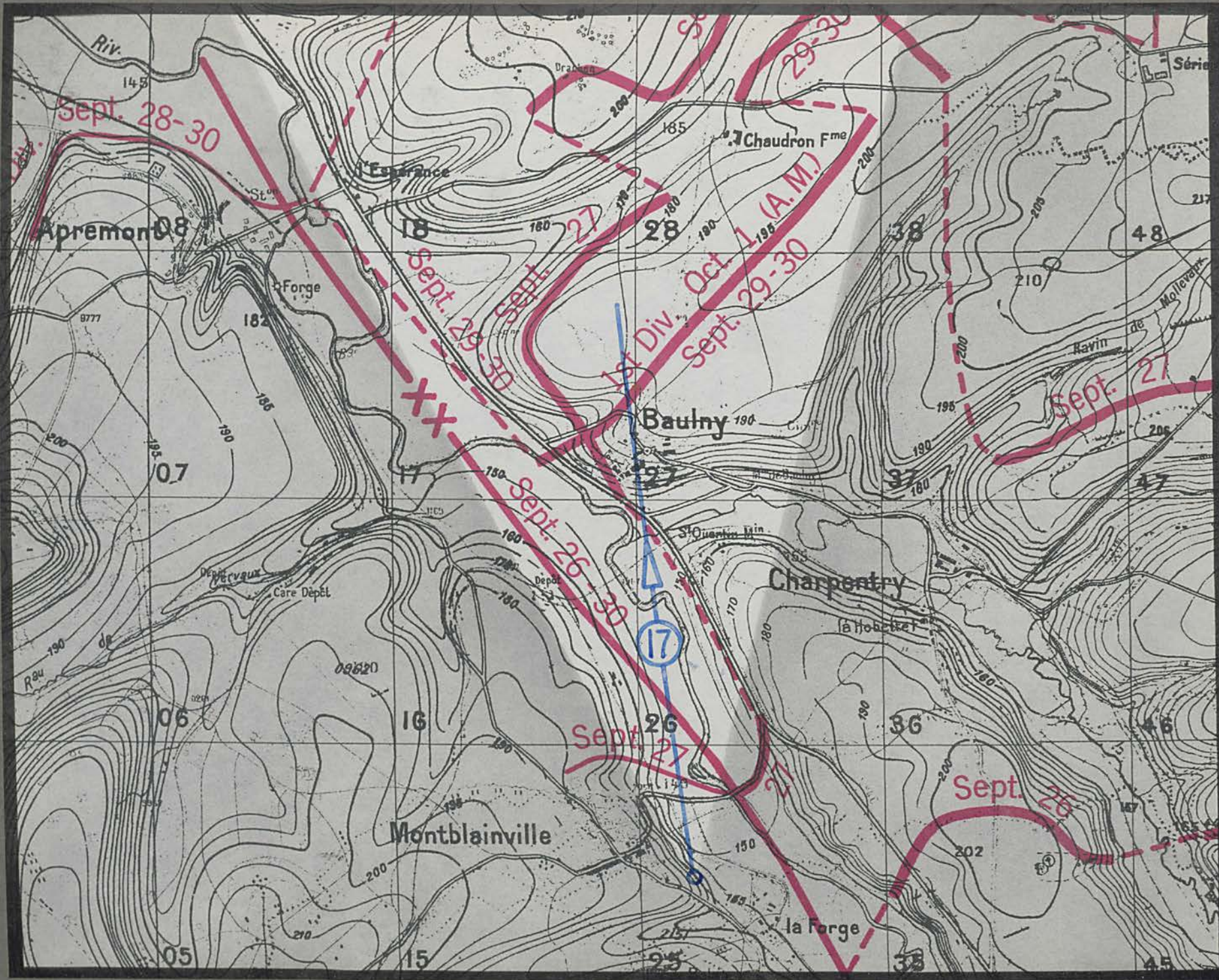
Epinonville

Véry

Côte 258







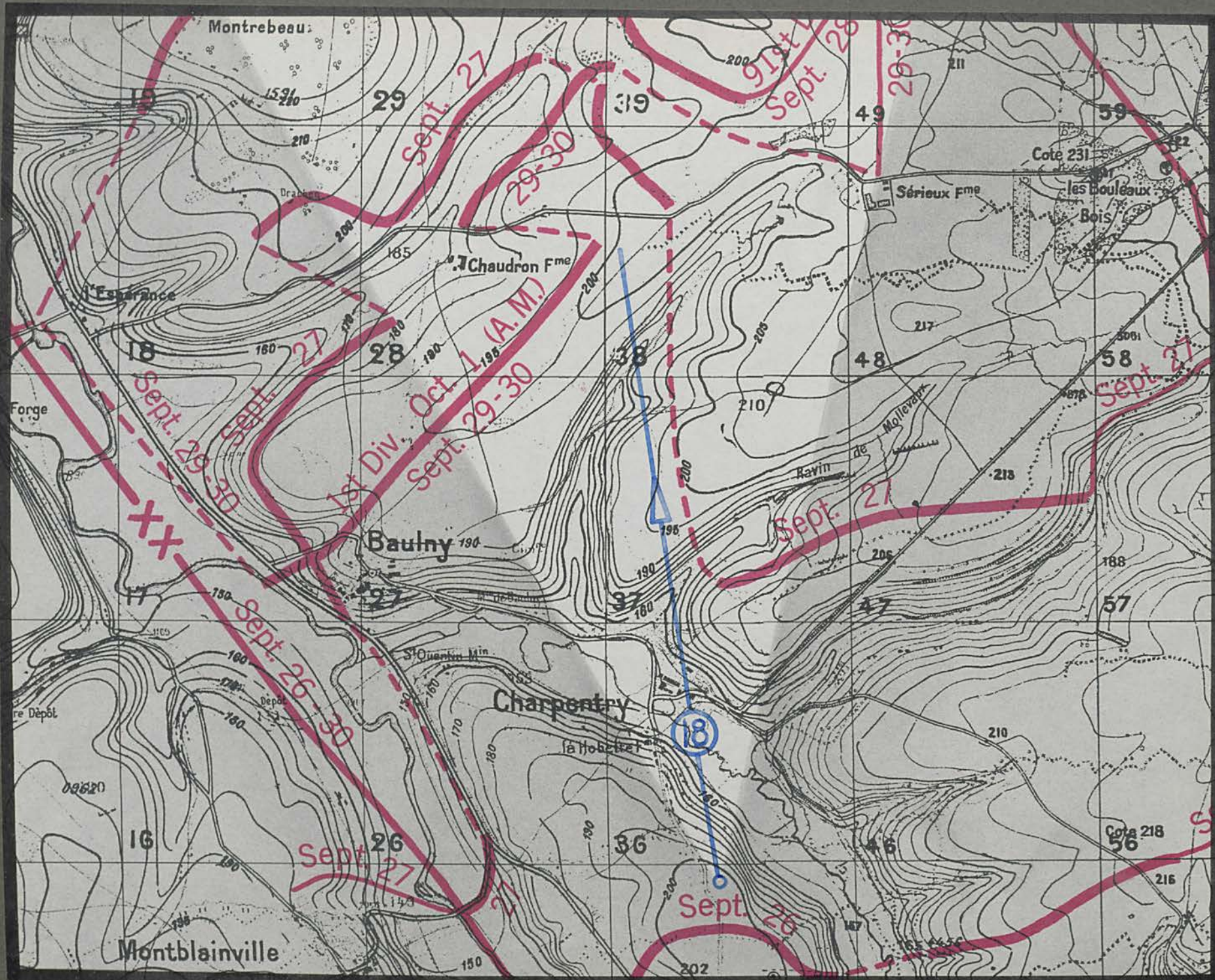


Aire River

Baulny

Aire River

Route Nationale No. 46



Montrebeau

Côte 240

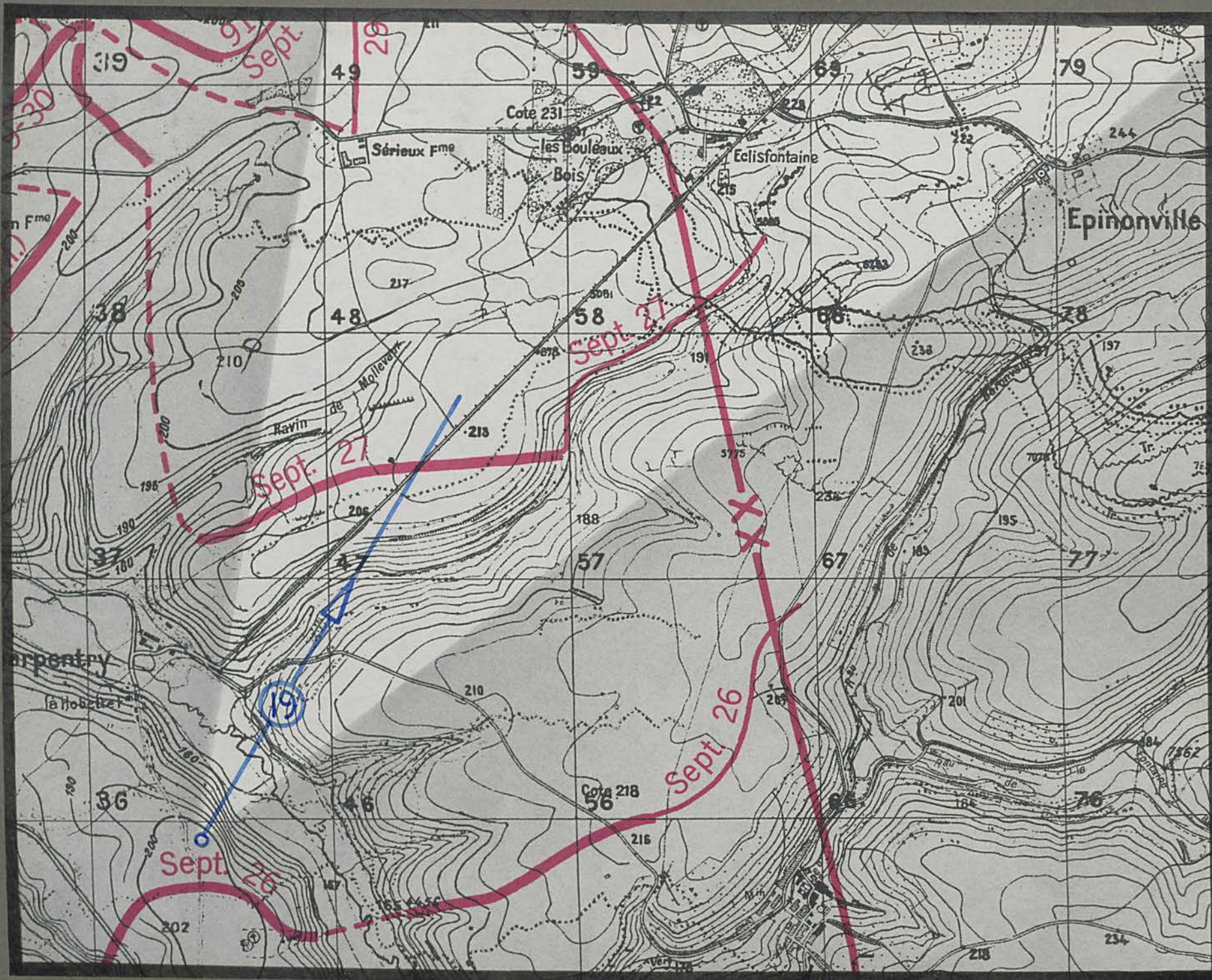
Côte 272

Charpentry

Côte 263

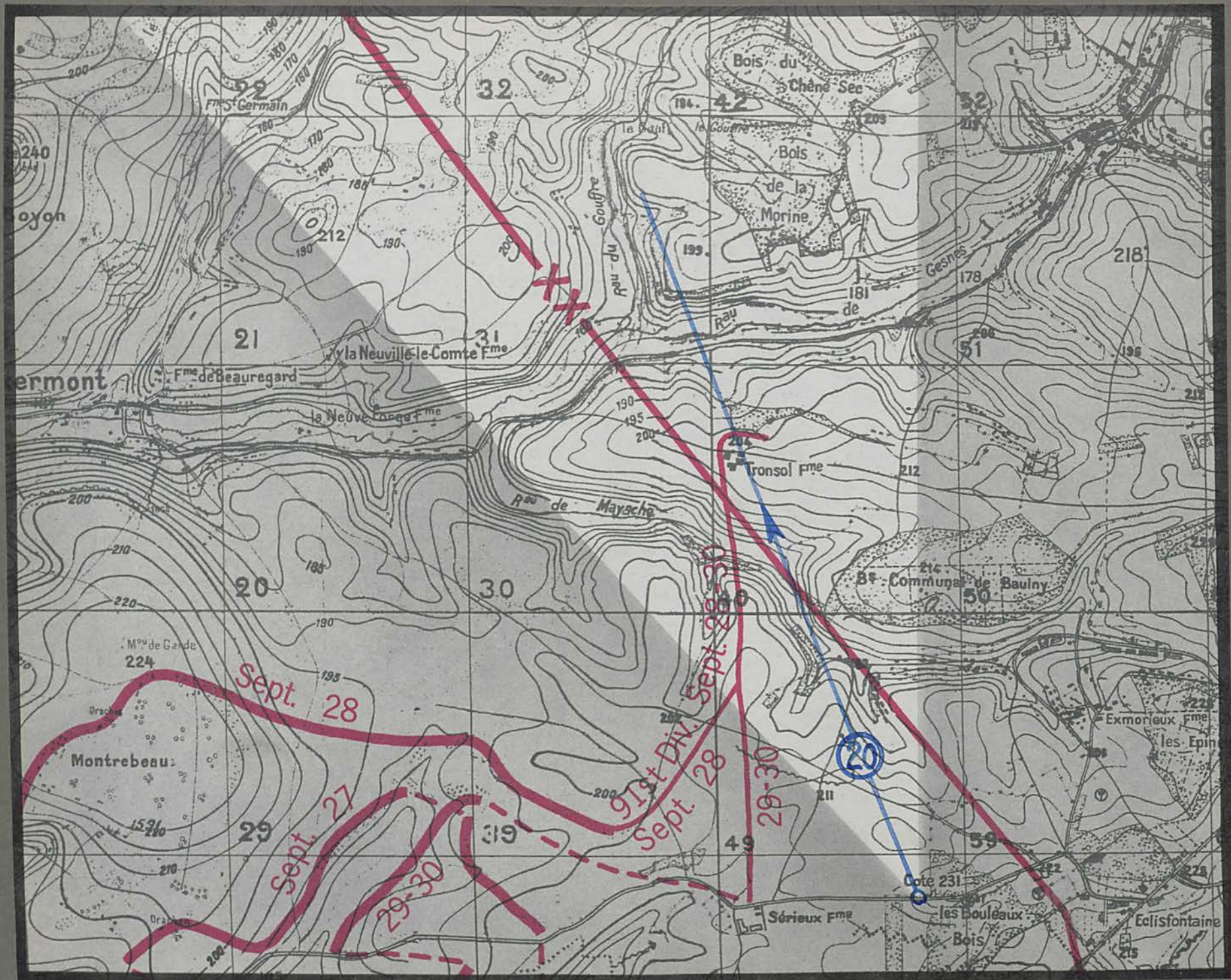
Charpentry-Eclisfontaine road





Charpentry - Eclisfontaine road





Côte 272

Côte 263

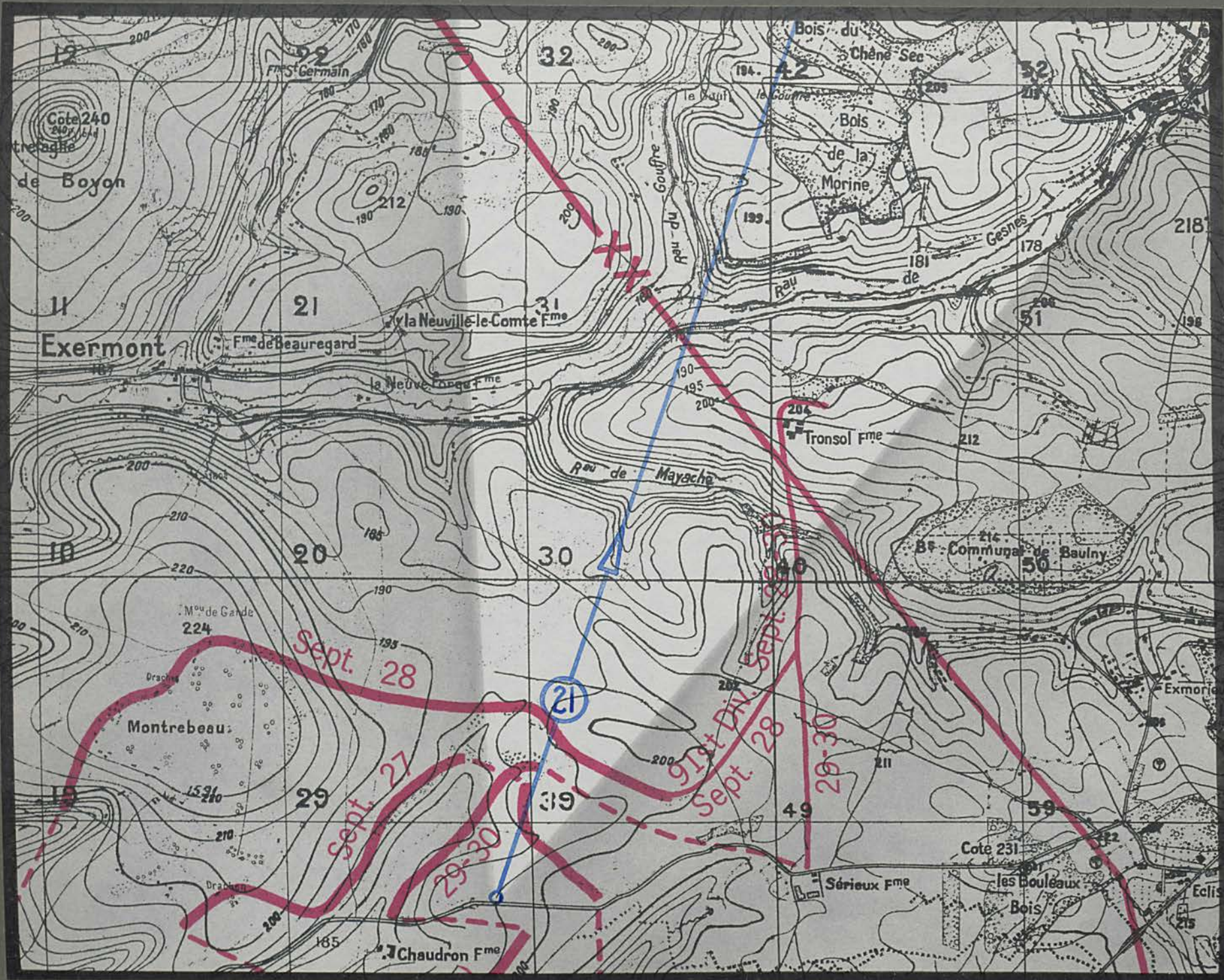
Troisot Fine.

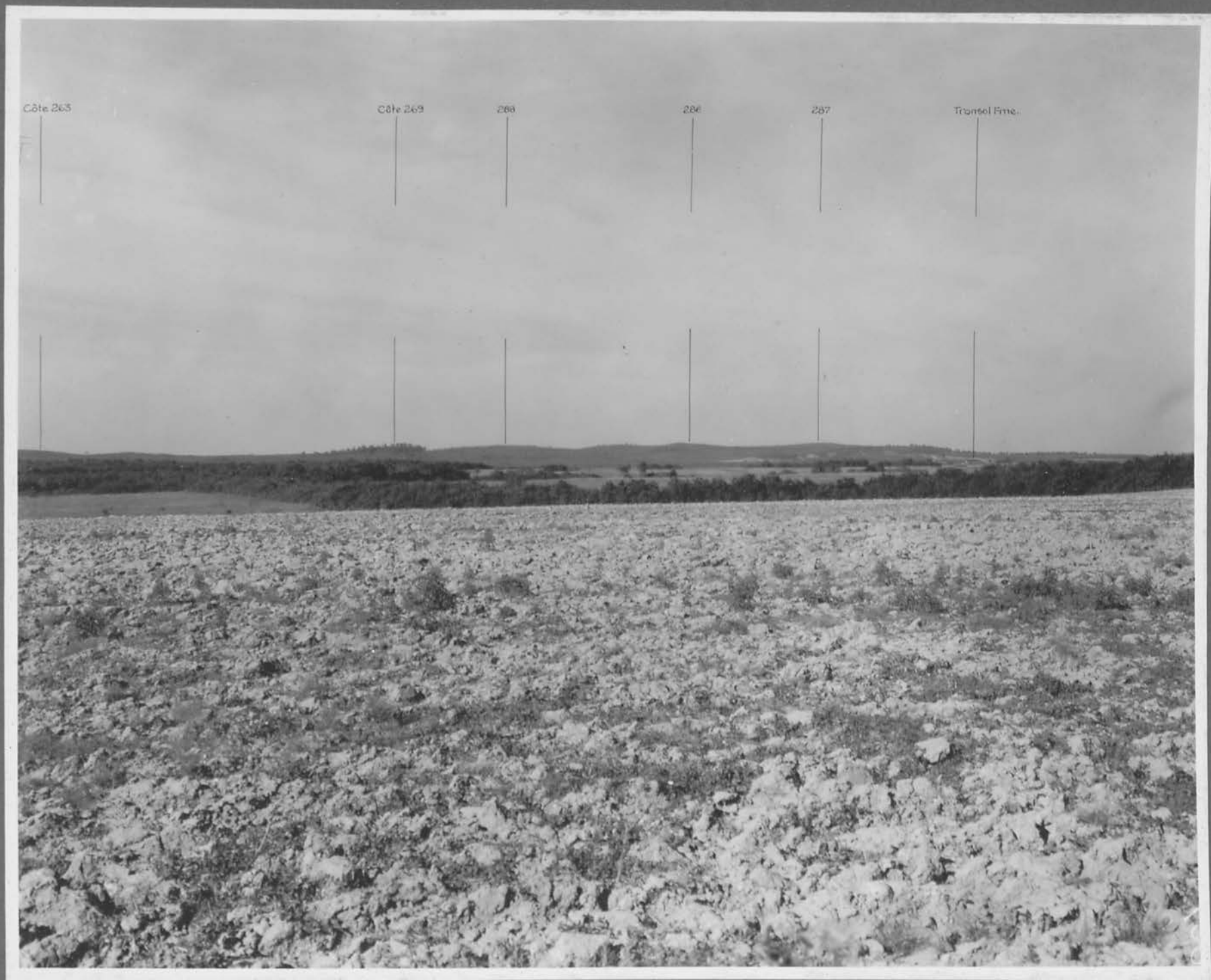
Côte 269

Bois du Chêne Sec

Bois Communal de Baulny





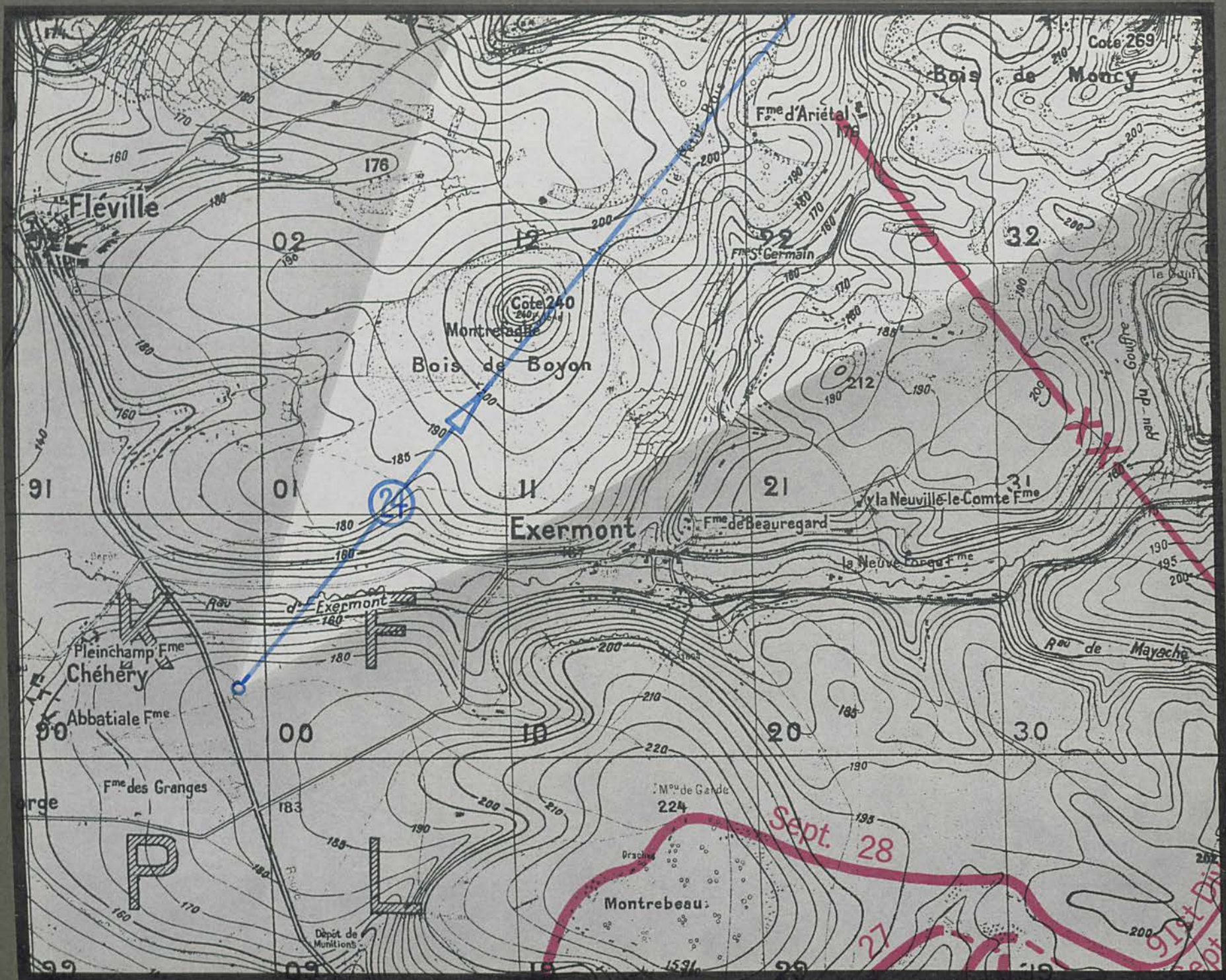




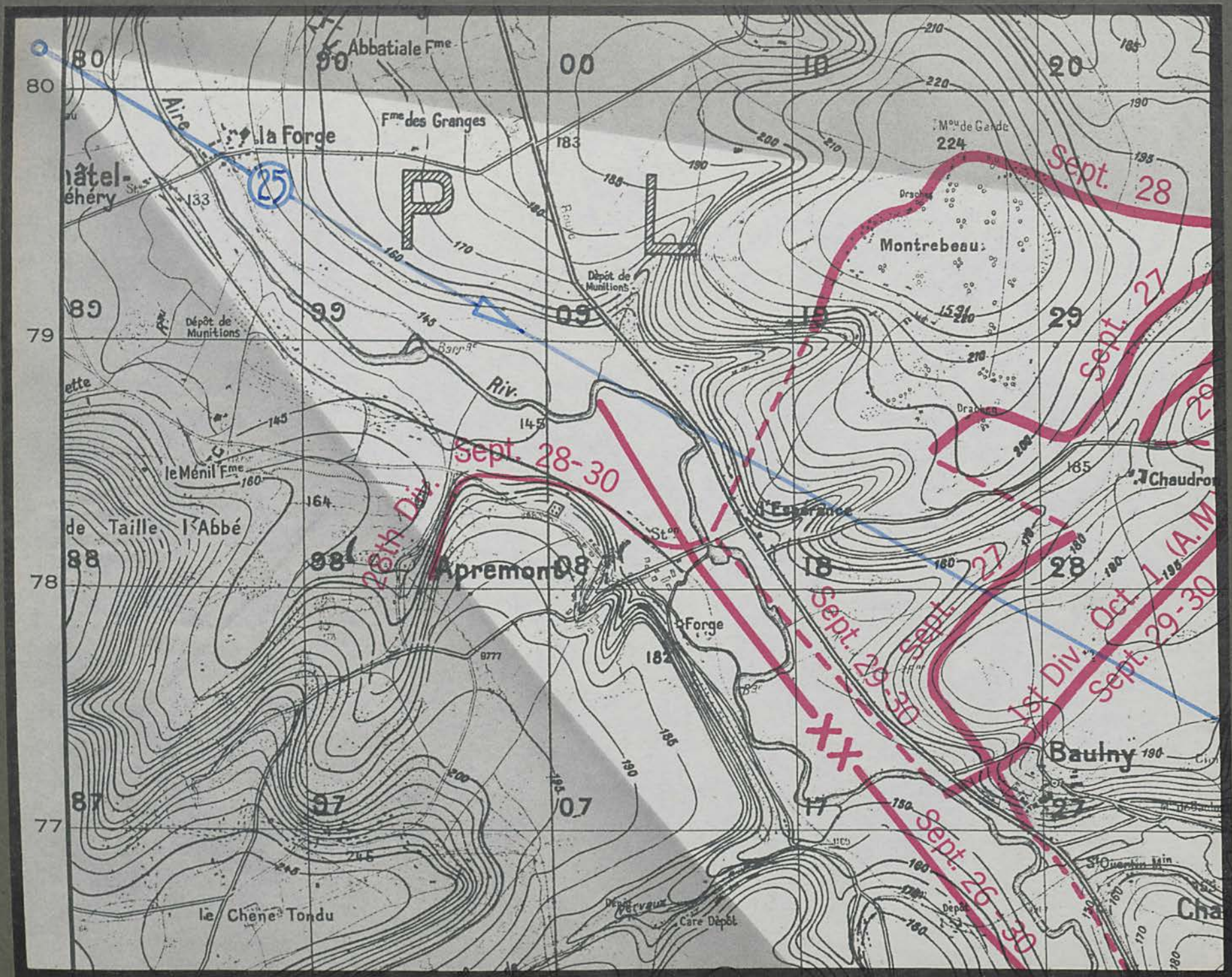
Rau d'Exermont

Montrebeau









Fme. des Granges R.R. Montrebeau la Forge - Chéhéry road Exermont - Châtel - Chéhéry road la Forge Baulny Route Nat^{le} No. 46 Apremont



COMMAND AND GENERAL STAFF SCHOOL
Fort Leavenworth, Kansas

LIBRARY REGULATIONS

1. Books, pamphlets, and periodicals must be charged at the loan desk (signature on book-loan card) before being taken from the library.

2. Any item drawn from the Library must be returned within one month.

Exceptions to this regulation are as follows:

(1) Material issued to classes as a whole.

(2) Material issued to instructors for professional use.

(3) New books which are in demand must be returned within one week.

(4) Books required for faculty use are subject to recall at any time.

(5) All persons having library material in their possession will return same before leaving the post permanently.

(6) Books loaned outside the School must be returned within two weeks.

3. Reference books and current periodicals will not be removed from the Library.

COMBINED NAME RESEARCH LIBRARY
1000 EAST WASHINGTON ST
ANN ARBOR MI 48106



3 1695 00155 0680

LIBRARY
COMMAND
AND
STAFF
COLLEGE

