

TERRAIN PHOTOGRAPHS
AMERICAN WORLD WAR BATTLEFIELDS
IN EUROPE

28TH DIVISION

CLERMONT SECTOR
SEPTEMBER 19-25, 1918

MEUSE-ARGONNE OFFENSIVE
SEPTEMBER 26-OCTOBER 10, 1918

PREPARED BY
THE AMERICAN BATTLE MONUMENTS
COMMISSION

THE COMMAND AND STAFF COLLEGE

LIBRARY



Class Symbol M. 9403-H6-C.73-G3-C28

Accession Number N69592

PREFACE

THIS album is part of a collection of photographs of the various battlefields in Europe upon which the Armed Forces of the United States were actively engaged during World War I.

These terrain photographs were taken and prepared by the American Battle Monuments Commission, as provided in the act of Congress of March 4, 1923, to complete the historical record of the operations of the American units. The series comprises 69 albums containing 1,396 photographs.

The contents of these albums will be of particular value when studied in conjunction with the Summaries of Operations, prepared by the American Battle Monuments Commission, which relate in detail the combat services of each American division.

On the page preceding the photographs will be found a small-scale key map showing the general operation of which this divisional operation was a part. In the pocket inside the back cover will be found a reprint of a 1:20,000 map, of the type used during the war, showing the operation covered by the photographs in this

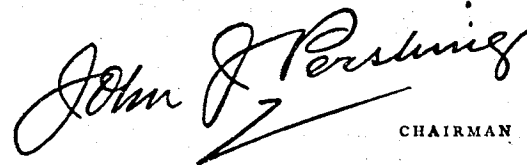
album. On this index map have been indicated the position of the camera and the direction in which it was sighted in taking each photograph.

On the page opposite each photograph is a section of the 1:20,000 map of the terrain in the vicinity of that pertaining to the photograph. The white wedge-shaped portion of the map indicates the sector of terrain which actually appears in the picture. The plotted position of the camera and the axis of the picture are shown in blue, the length of the blue line approximately indicating the depth of the view. The circled number corresponds to the number of the photograph, of which the numerals before the dash indicate the division and the numerals after the dash indicate the serial number of the photograph in this division.

Various topographical features visible in the photographs have been indicated by name to facilitate orientation.

Complete sets of these albums have been deposited with the National Archives, the Library of Congress, the Historical Division of the War Department General Staff, and the Command and Staff College.

AMERICAN BATTLE MONUMENTS COMMISSION,


CHAIRMAN

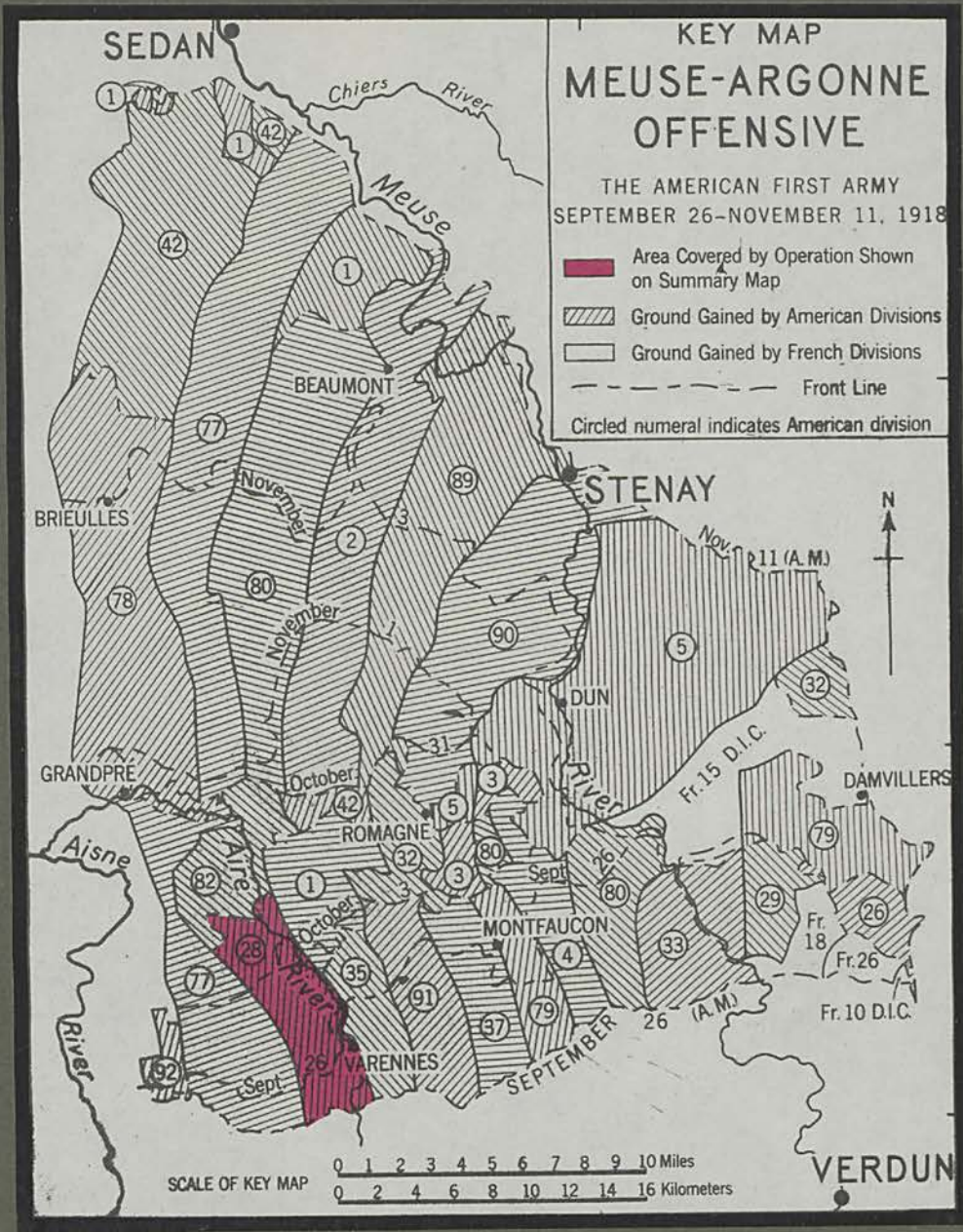
1922-1940

28TH DIVISION
CLERMONT SECTOR

SEPTEMBER 19-25, 1918

MEUSE-ARGONNE OFFENSIVE

SEPTEMBER 26—OCTOBER 10, 1918





le Four de Paris-Varenes road

Roufe Natle No.46

Binarville-Varenes road

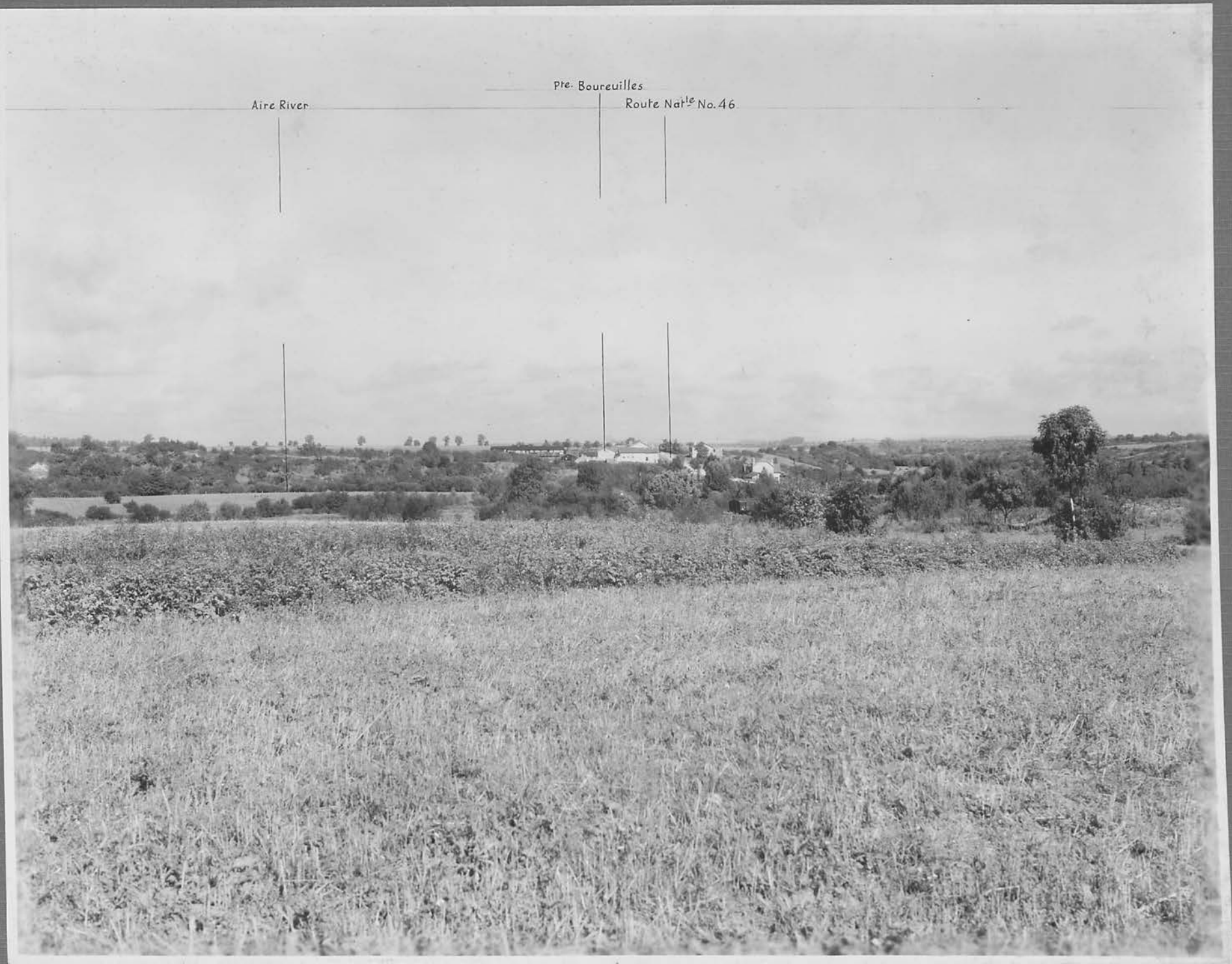
Varenes

Chatel Chéhéry

Côte des Perrières

Montblainville





Côte 285





Route Nat^{le} No. 46

Vauquois

Aire River

Pt^e Boureuilles





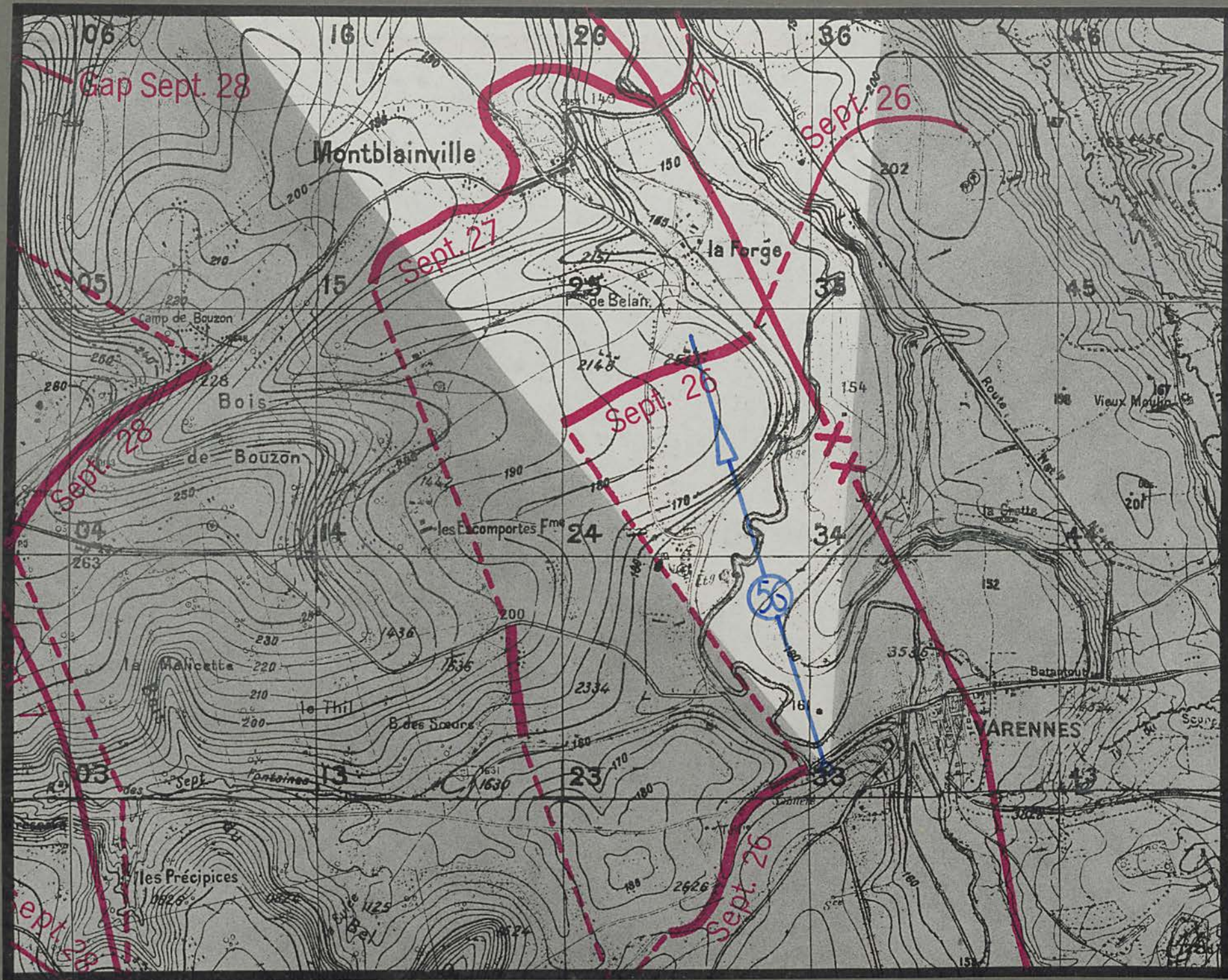
Montfaucon

Varenes

Aire River Valley

Route Natle No. 46

Point 221



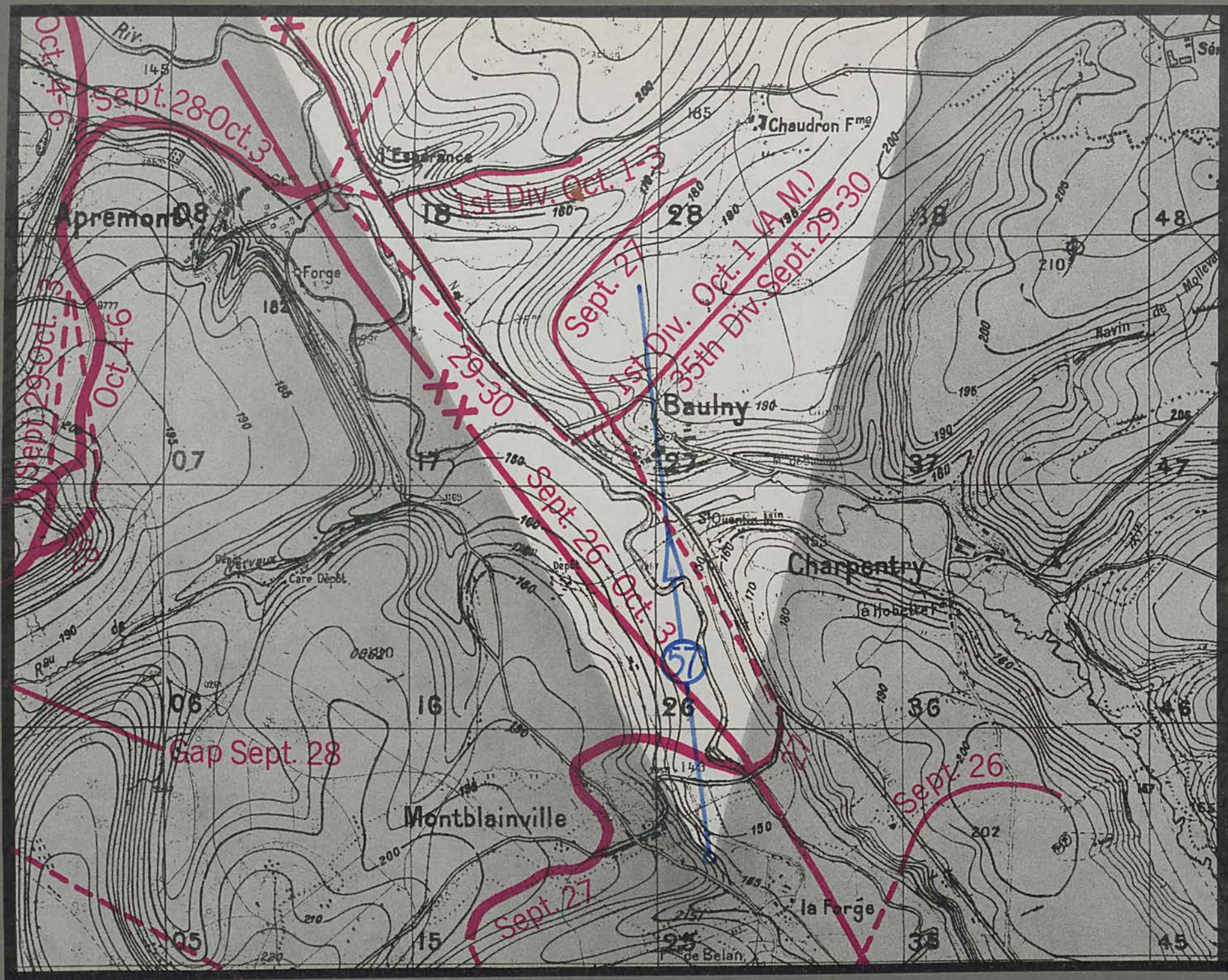


Varenes-Montblainville road

Montbainville Aire River

Aire River

Route Natle No. 46



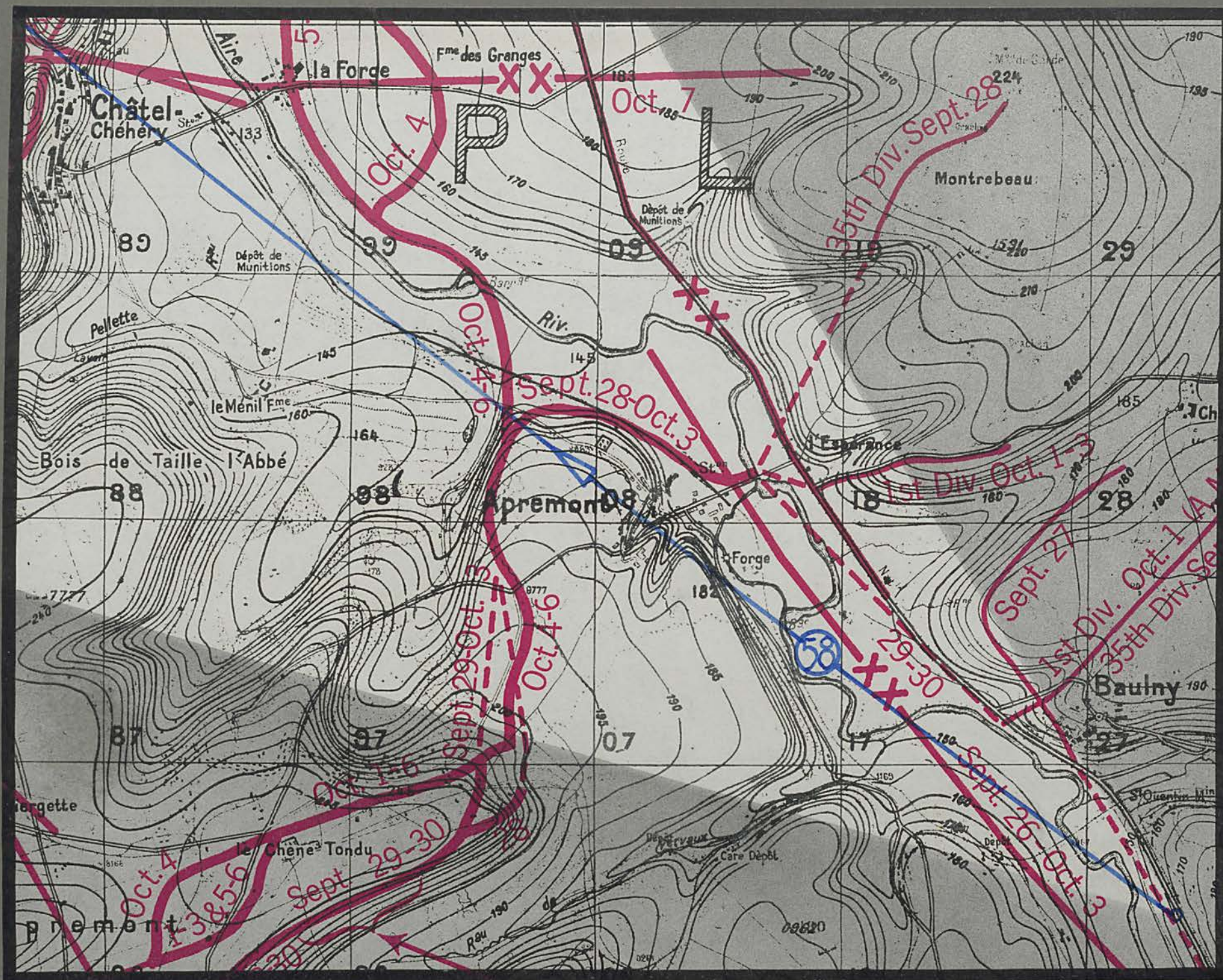


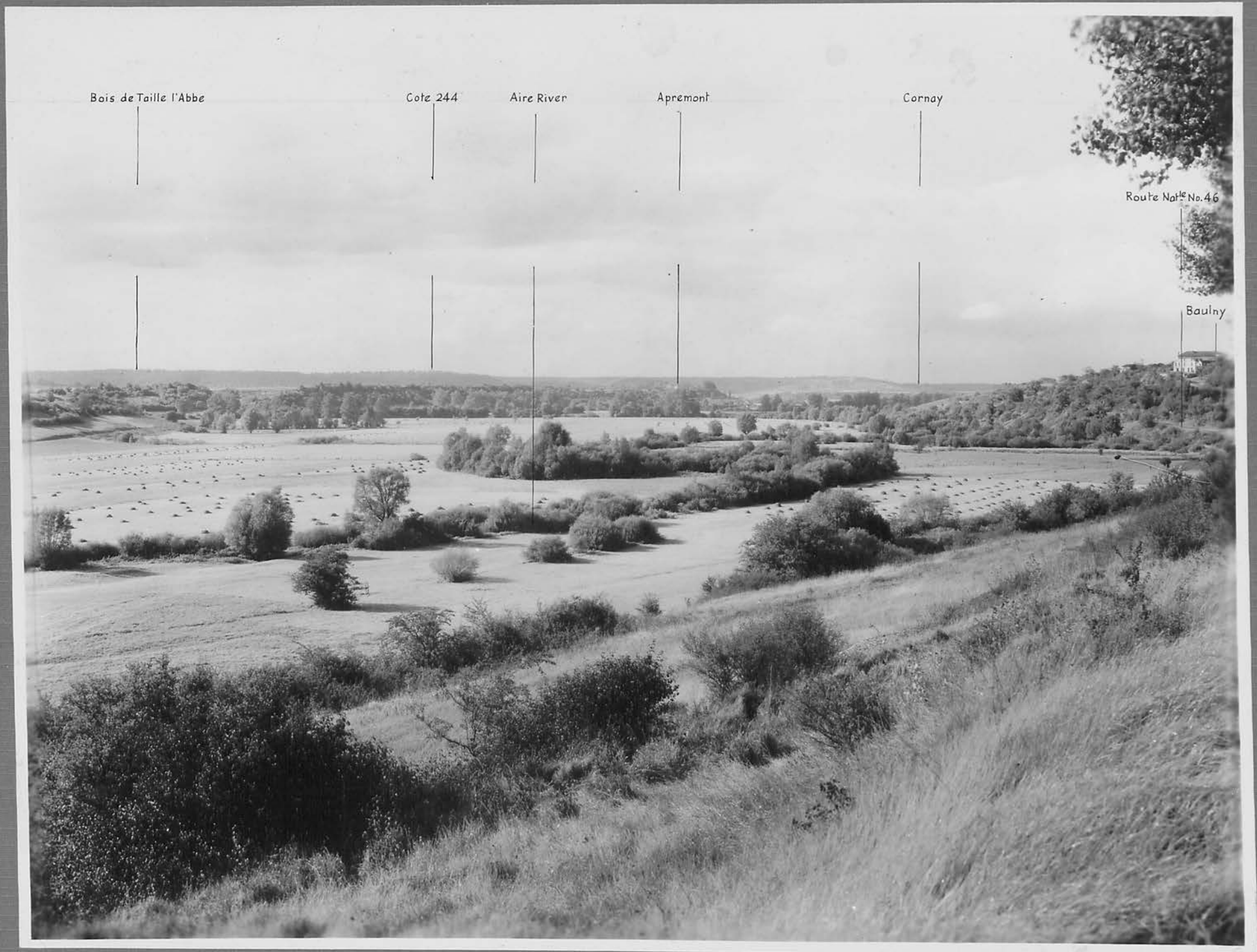
Aire River

Boulny

Aire River

Route Nationale No. 46





Bois de Taille l'Abbe

Cote 244

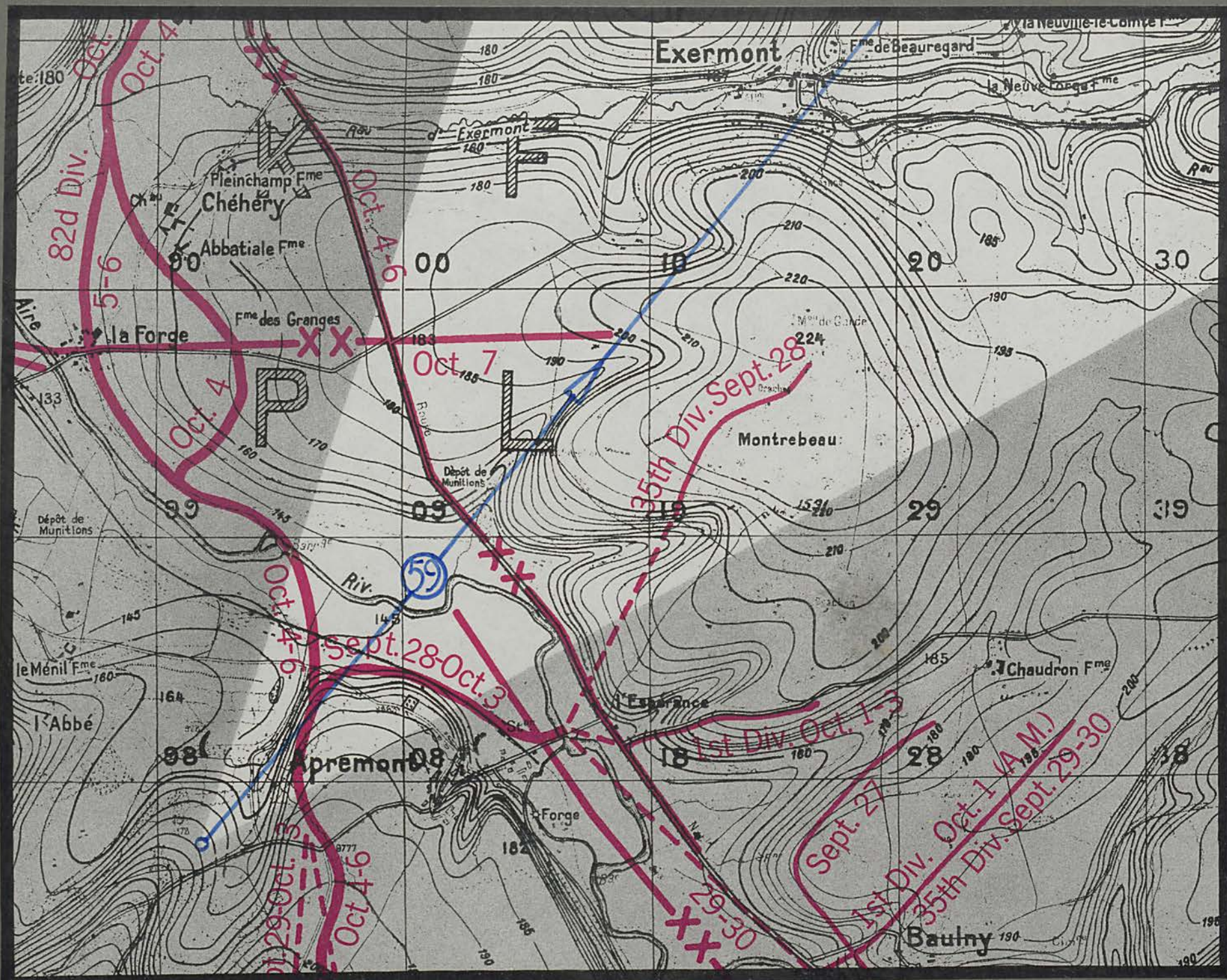
Aire River

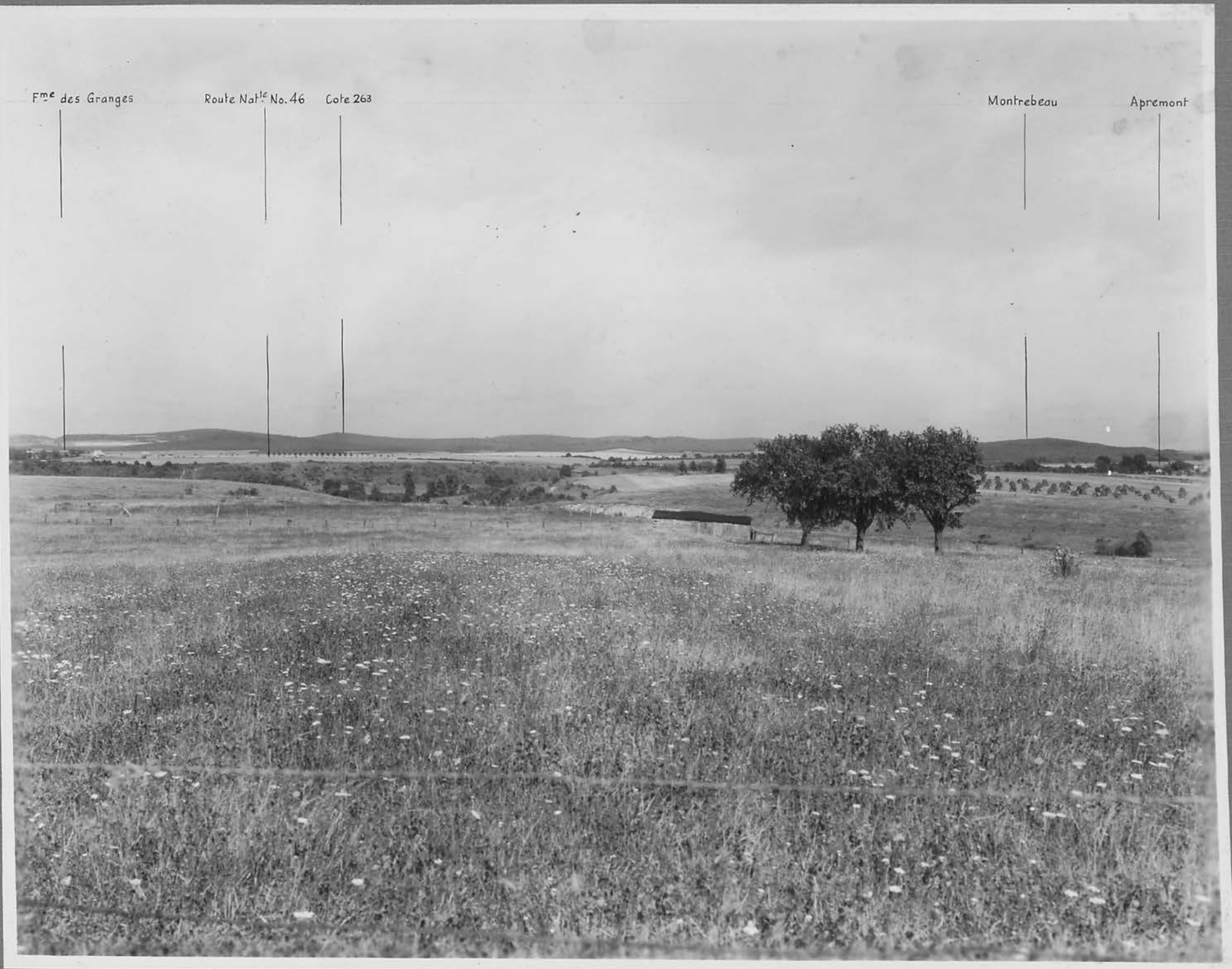
Apremont

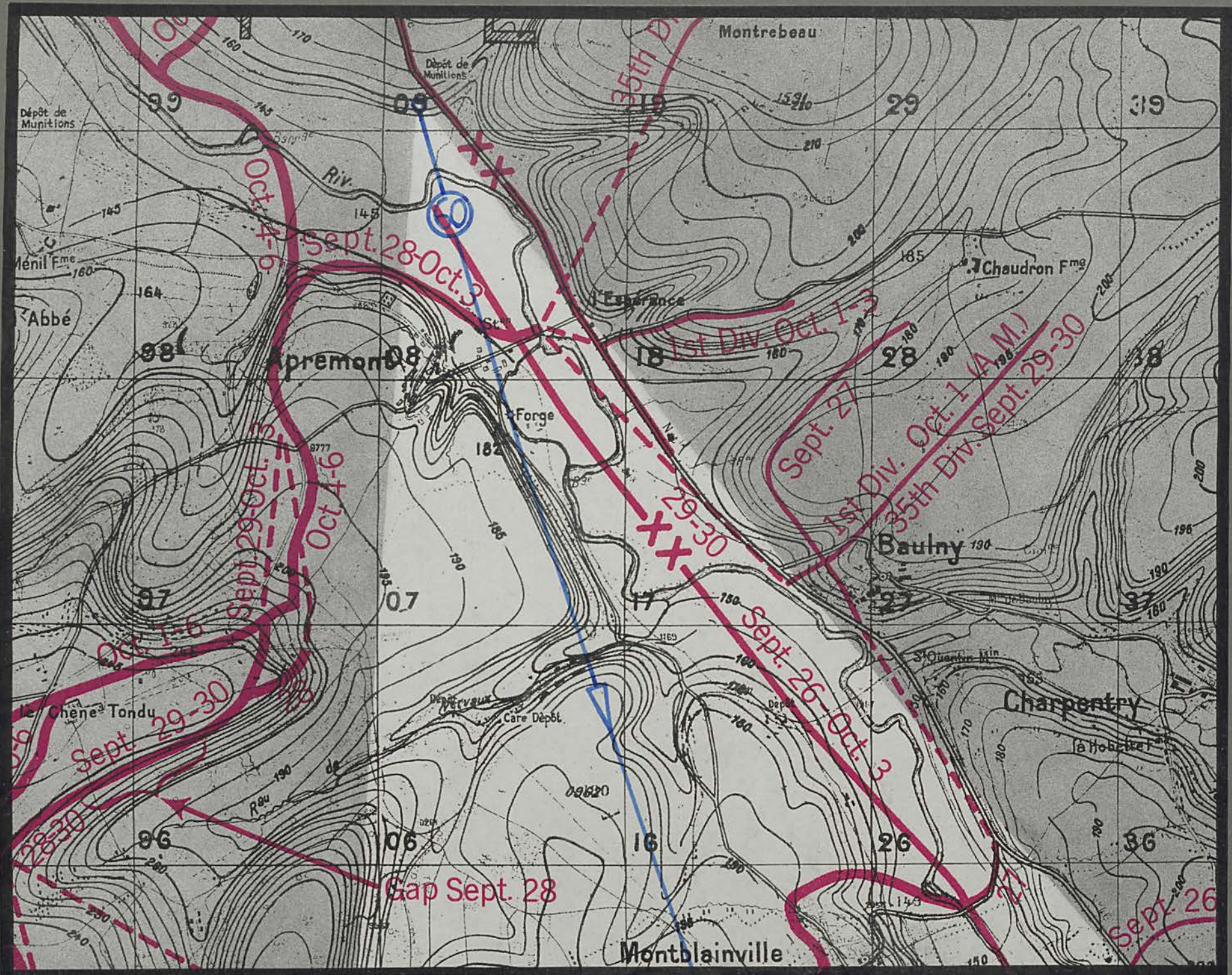
Cornay

Route Nationale No. 46

Baulny







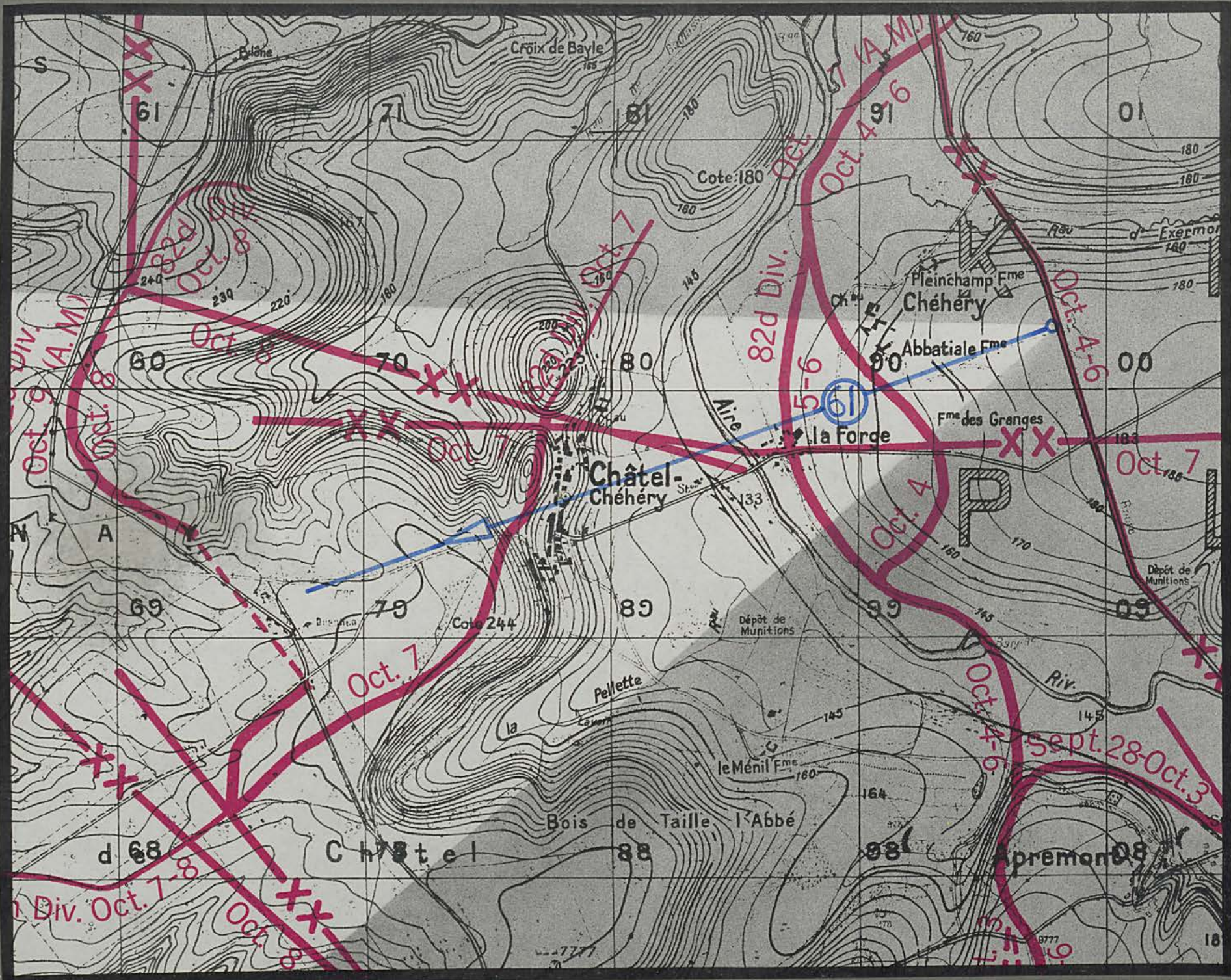
Route Natle No.46

Montblainville

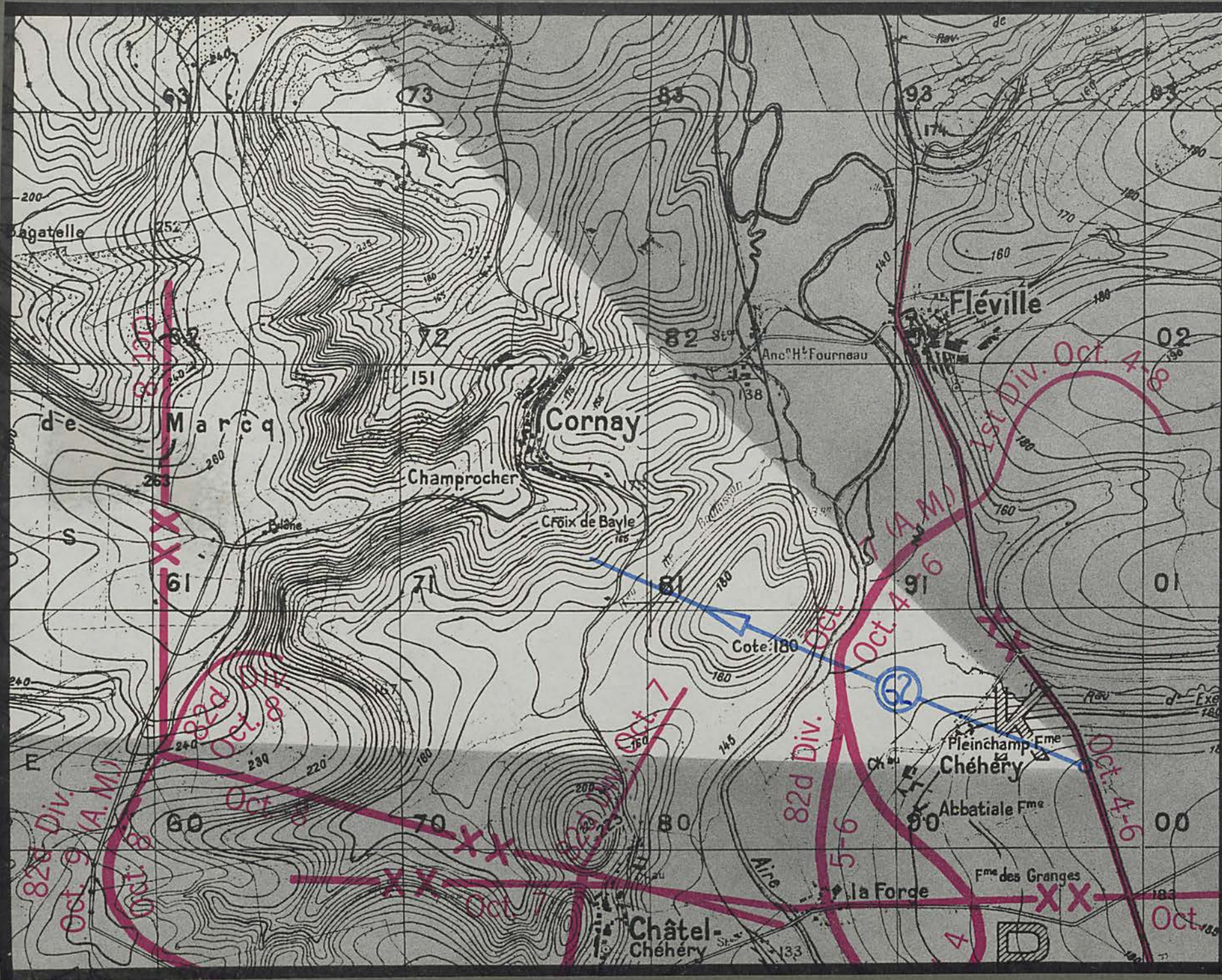
Apremont

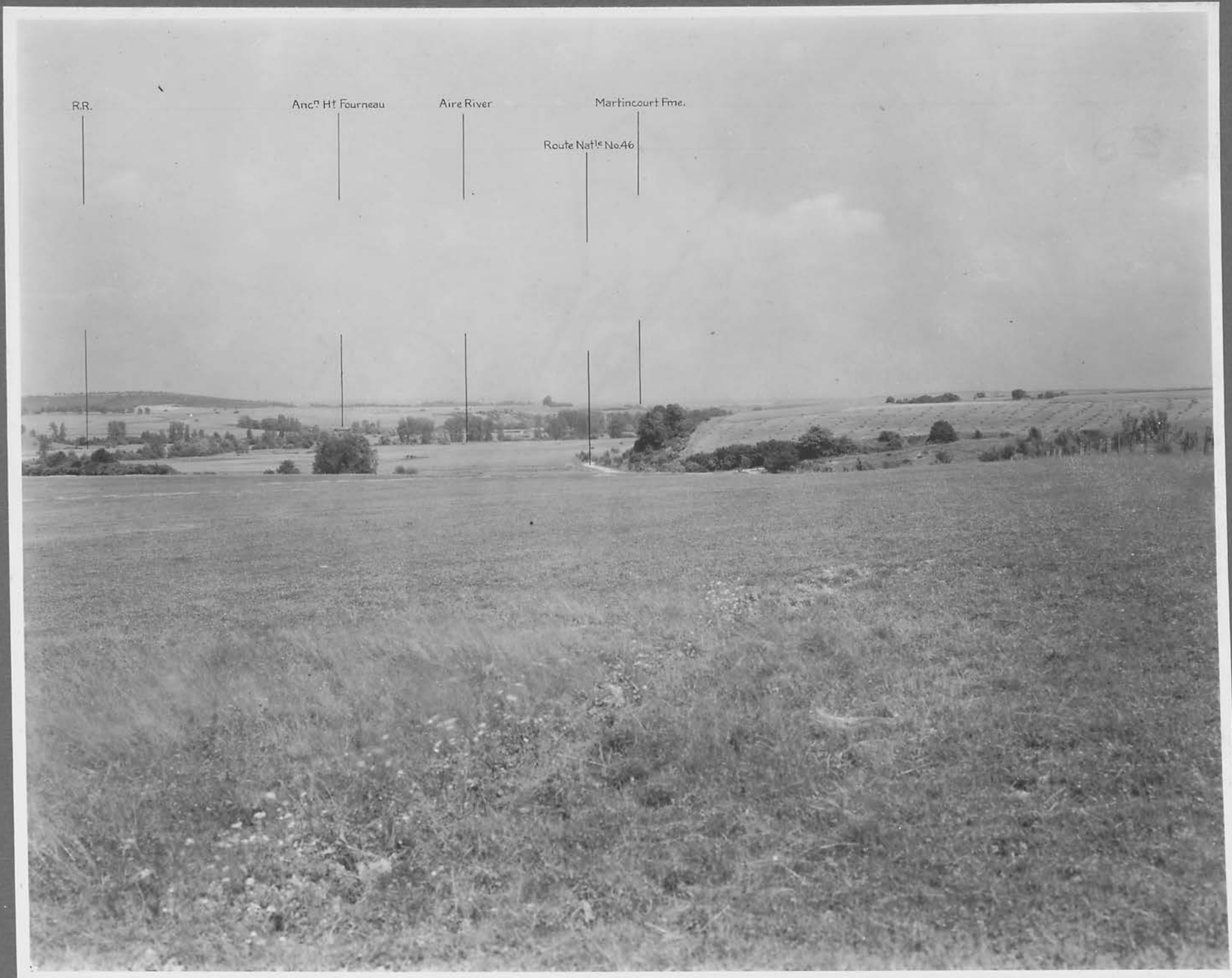
Bois de Bouzon Aire River

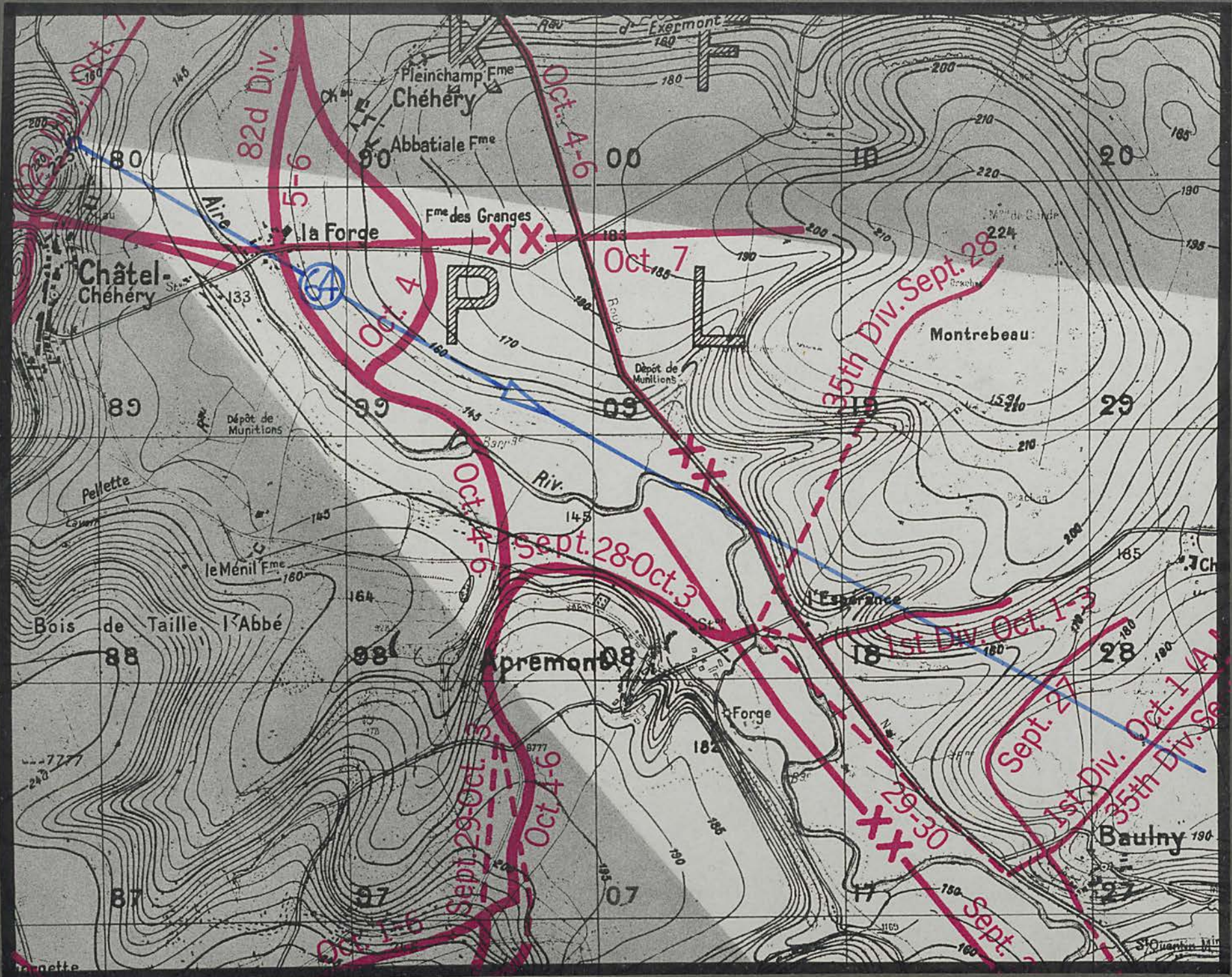




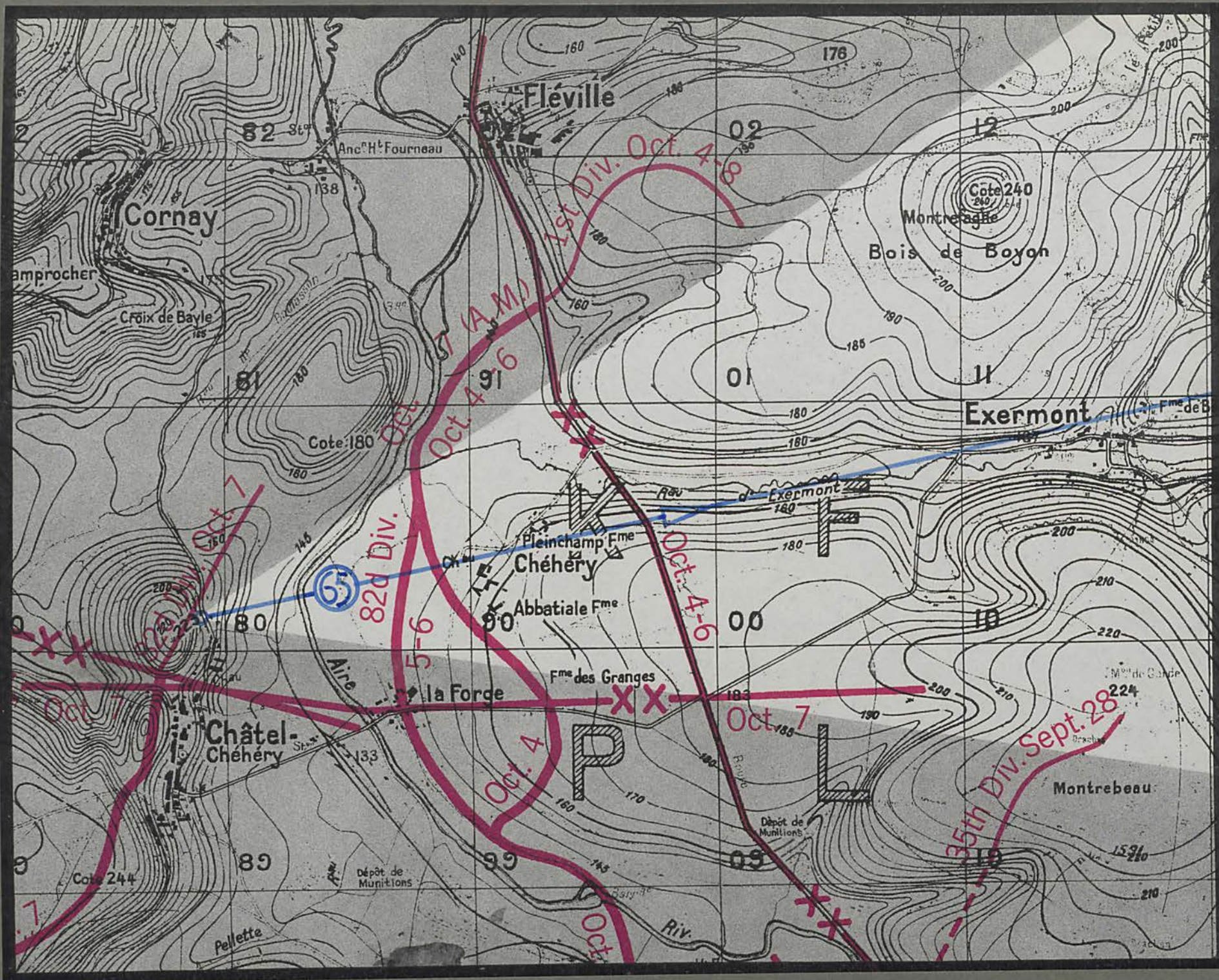




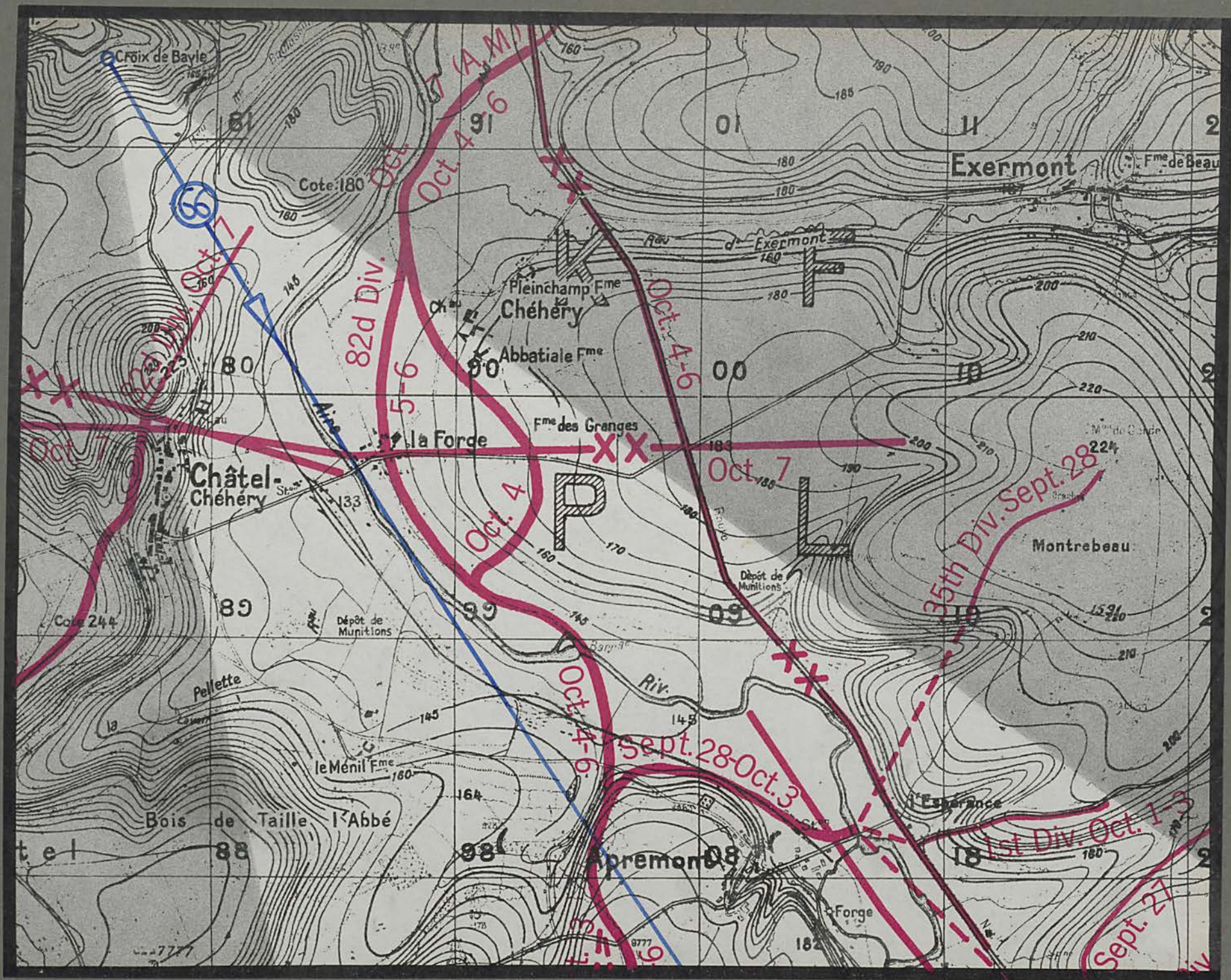












Route Nat^l No.46 Exermont-Châtel Chéhéry road Apremont Aire River la Forge R.R. Station Bois de la Taille l'Abbé Cornay-Châtel Chéhéry road

Chéhéry
Ch^{er} Baulny la Forge-Chéhéry road le Menil Fme. Châtel Chéhéry Château
le Chêne Tondeu



69593

LIBRARY OF THE ARMY

COMBINED ARMS RESEARCH LIBRARY
FORT LEAVENWORTH, KS



3 1695 00464 6550

LIBRARY
COMMAND
AND
STAFF
COLLECT

