

TERRAIN PHOTOGRAPHS  
AMERICAN WORLD WAR BATTLEFIELDS  
IN EUROPE

7<sup>TH</sup> DIVISION

PUVENELLE SECTOR &  
WOEVRE PLAIN OPERATION  
OCTOBER 8 - NOVEMBER 11, 1918

11<sup>TH</sup> ENGINEERS

CAMBRAI  
NOVEMBER 20 - DECEMBER 4, 1917

PREPARED BY  
THE AMERICAN BATTLE MONUMENTS  
COMMISSION

THE COMMAND AND STAFF COLLEGE

LIBRARY



Class Symbol M9403-H6-C.73-G3-C7

Accession Number N 69585

## PREFACE

THIS album is part of a collection of photographs of the various battlefields in Europe upon which the Armed Forces of the United States were actively engaged during World War I.

These terrain photographs were taken and prepared by the American Battle Monuments Commission, as provided in the act of Congress of March 4, 1923, to complete the historical record of the operations of the American units. The series comprises 69 albums containing 1,396 photographs.

The contents of these albums will be of particular value when studied in conjunction with the Summaries of Operations, prepared by the American Battle Monuments Commission, which relate in detail the combat services of each American division.

On the page preceding the photographs will be found a small-scale key map showing the general operation of which this divisional operation was a part. In the pocket inside the back cover will be found a reprint of a 1:20,000 map, of the type used during the war, showing the operation covered by the photographs in this

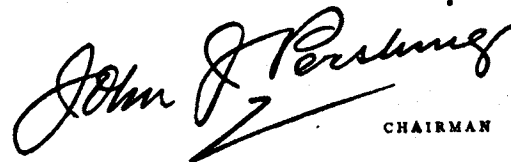
album. On this index map have been indicated the position of the camera and the direction in which it was sighted in taking each photograph.

On the page opposite each photograph is a section of the 1:20,000 map of the terrain in the vicinity of that pertaining to the photograph. The white wedge-shaped portion of the map indicates the sector of terrain which actually appears in the picture. The plotted position of the camera and the axis of the picture are shown in blue, the length of the blue line approximately indicating the depth of the view. The circled number corresponds to the number of the photograph, of which the numerals before the dash indicate the division and the numerals after the dash indicate the serial number of the photograph in this division.

Various topographical features visible in the photographs have been indicated by name to facilitate orientation.

Complete sets of these albums have been deposited with the National Archives, the Library of Congress, the Historical Division of the War Department General Staff, and the Command and Staff College.

AMERICAN BATTLE MONUMENTS COMMISSION,

  
CHAIRMAN

NOV 22 1946

7<sup>TH</sup> DIVISION  
PUVENELLE SECTOR  
AND  
WÖEVRE PLAIN OPERATION  
OCTOBER 8—NOVEMBER 11, 1918

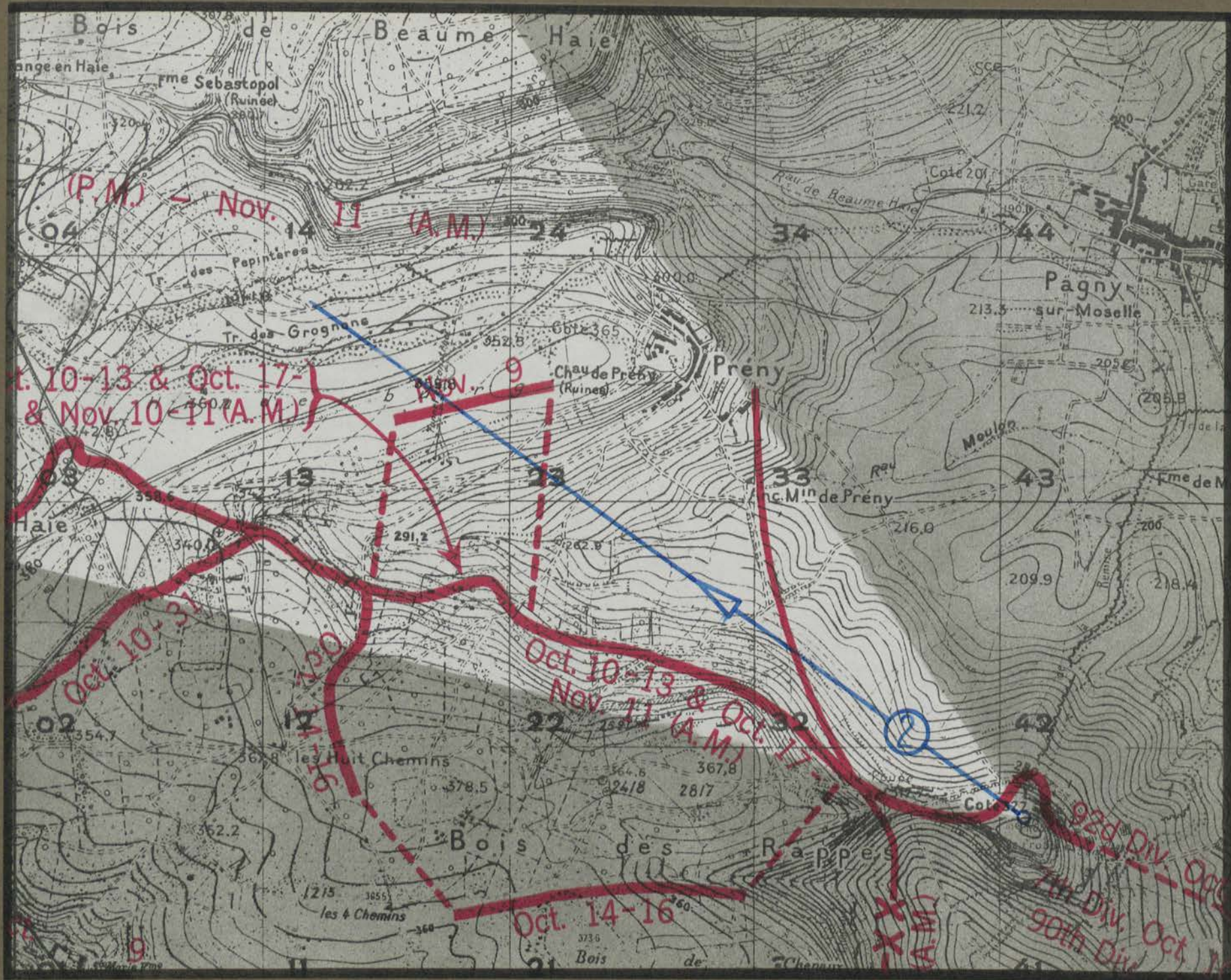






Bois du Trou de la Haie

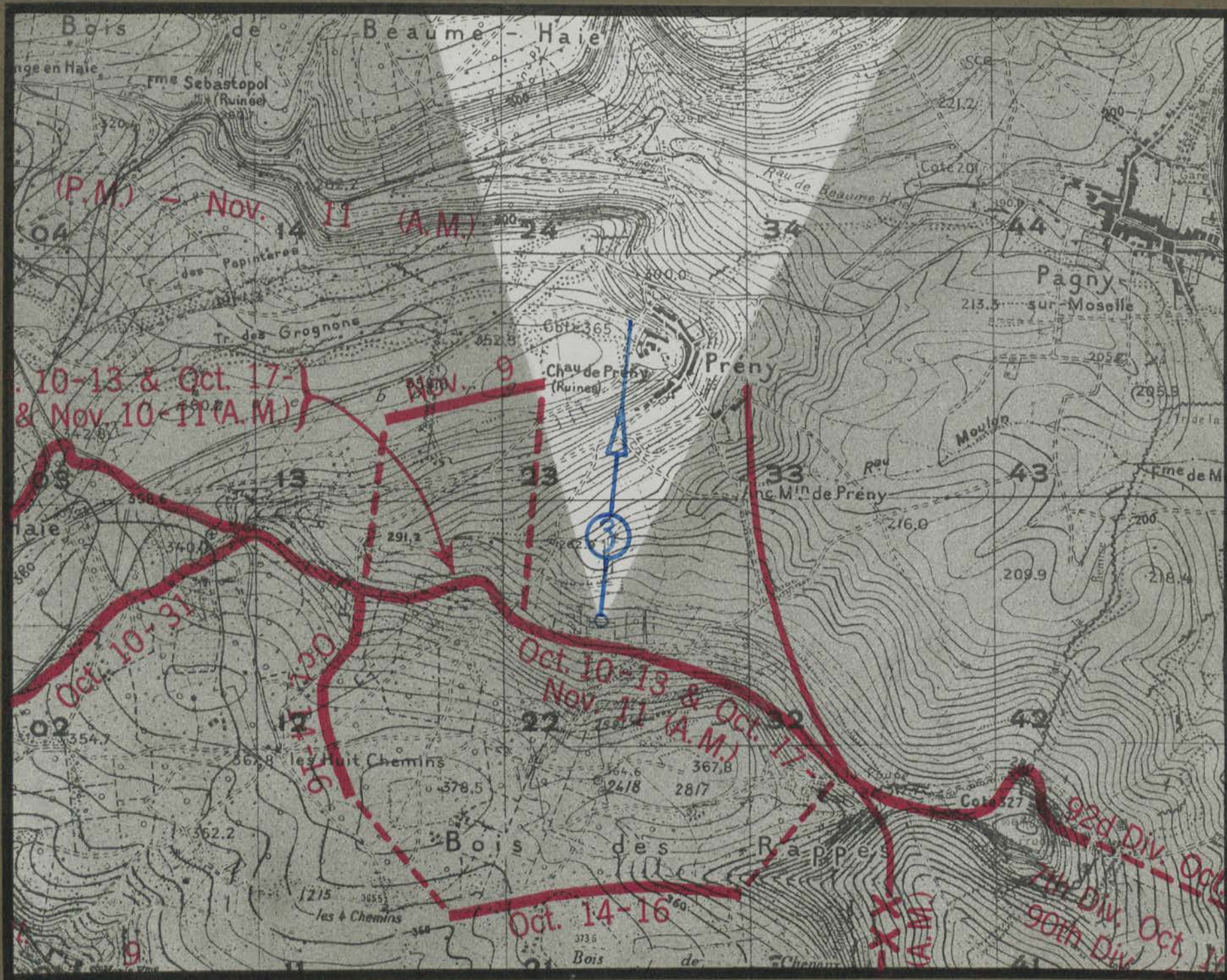
Bois des Rappes





Hill 367.8

Chau de Prény Prény





Thiaucourt-Prény road

Hill 365

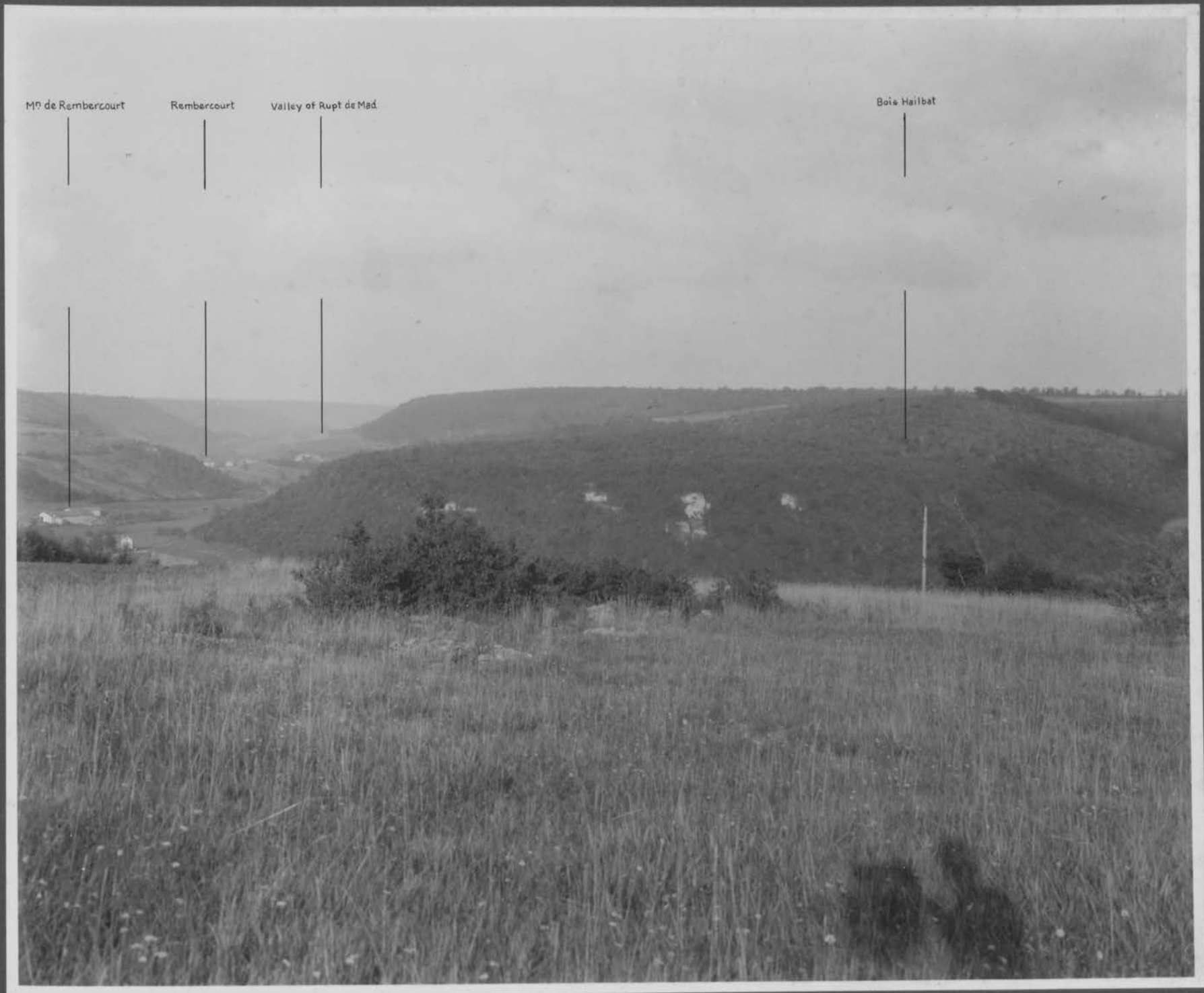
Prény



Bois des Rappes









Mon Plaisir Farm

Bois de la Montagne

Bois du Rupt

To Charey

M<sup>o</sup> de Rembercourt

Rembercourt

Valley of Rupt de Mad



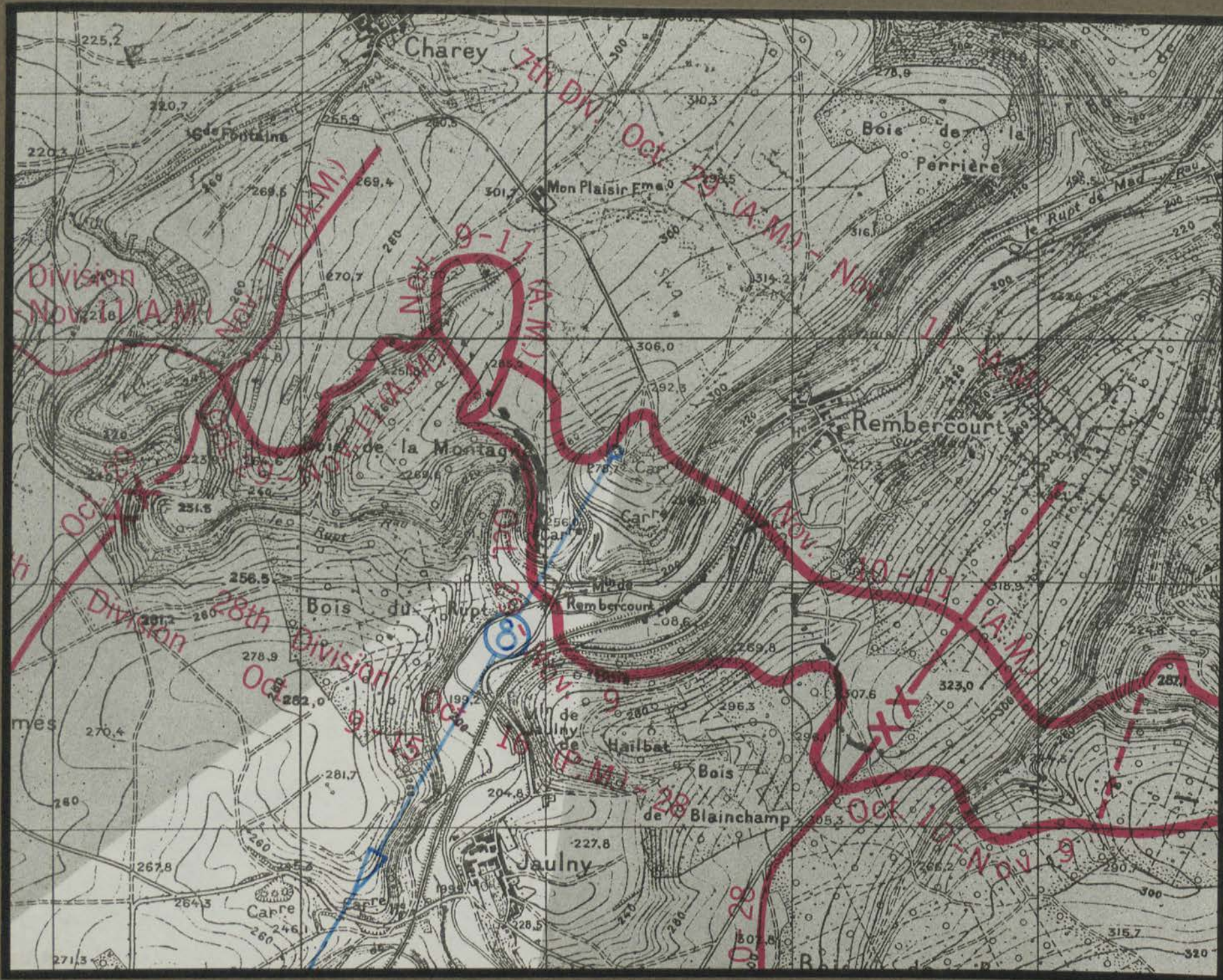




R.R.

5.8-4.6

Rembercourt

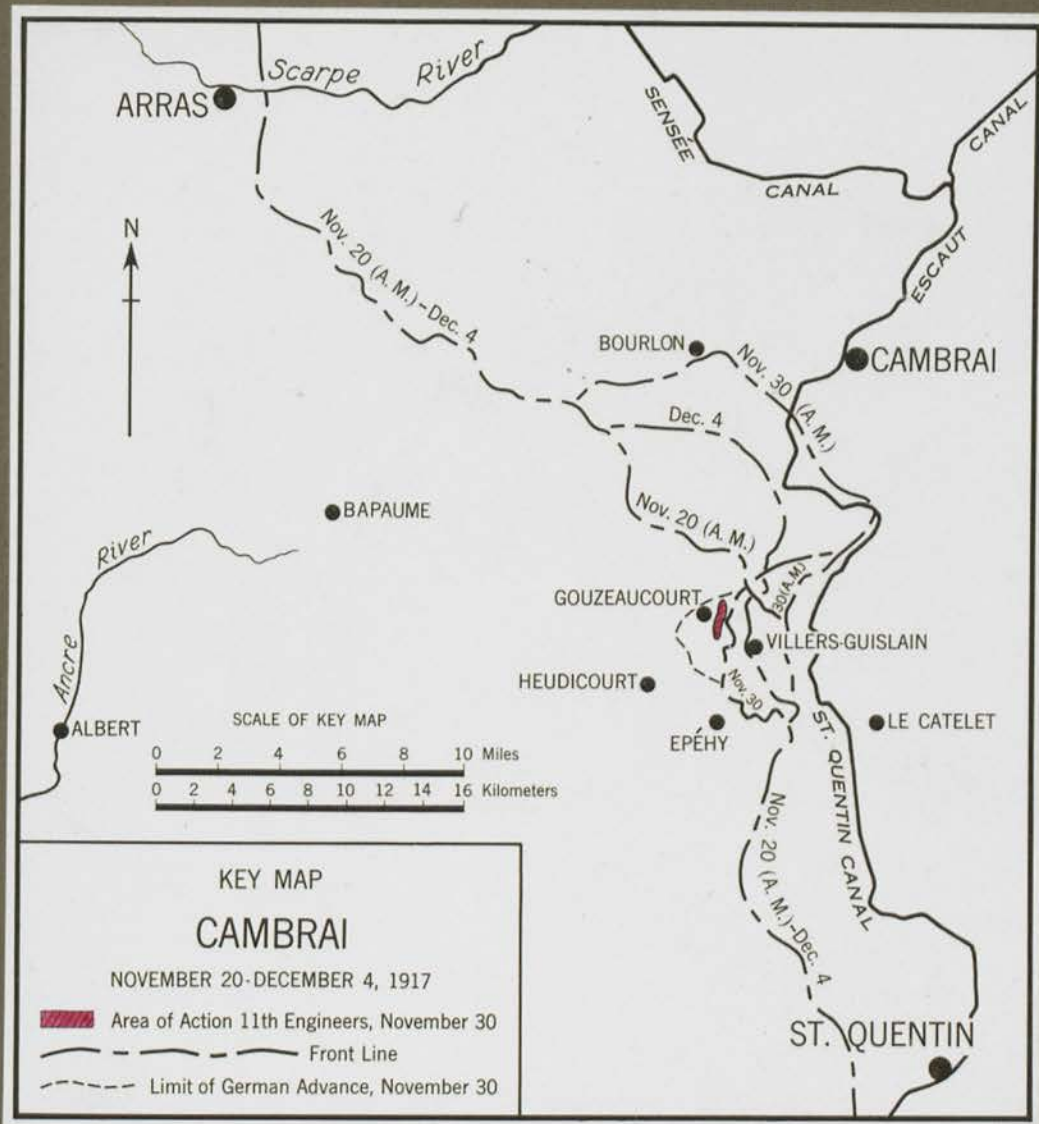


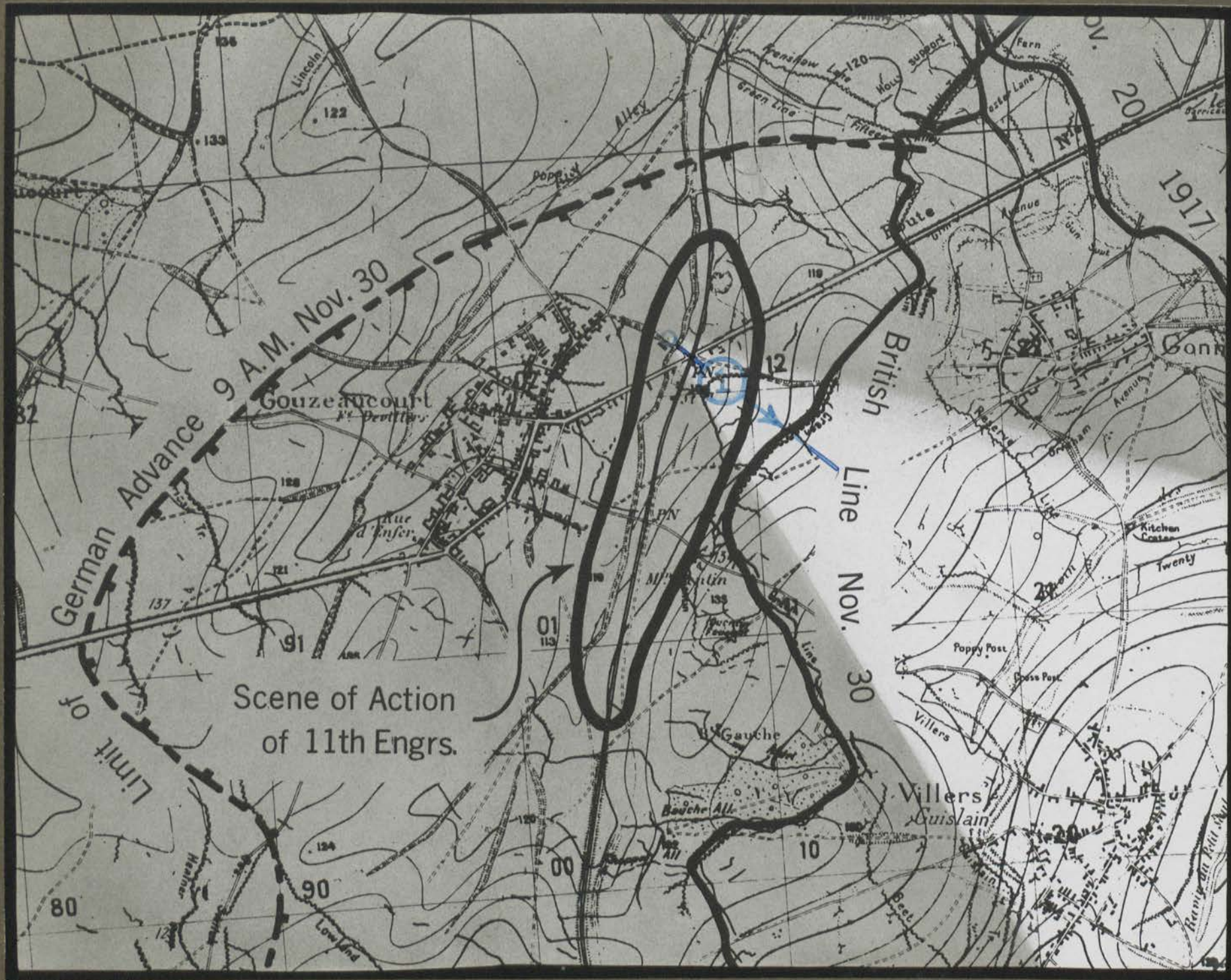


11<sup>TH</sup> ENGINEERS

CAMBRAI

NOVEMBER 20—DECEMBER 4, 1917







Gouzeaucourt Station



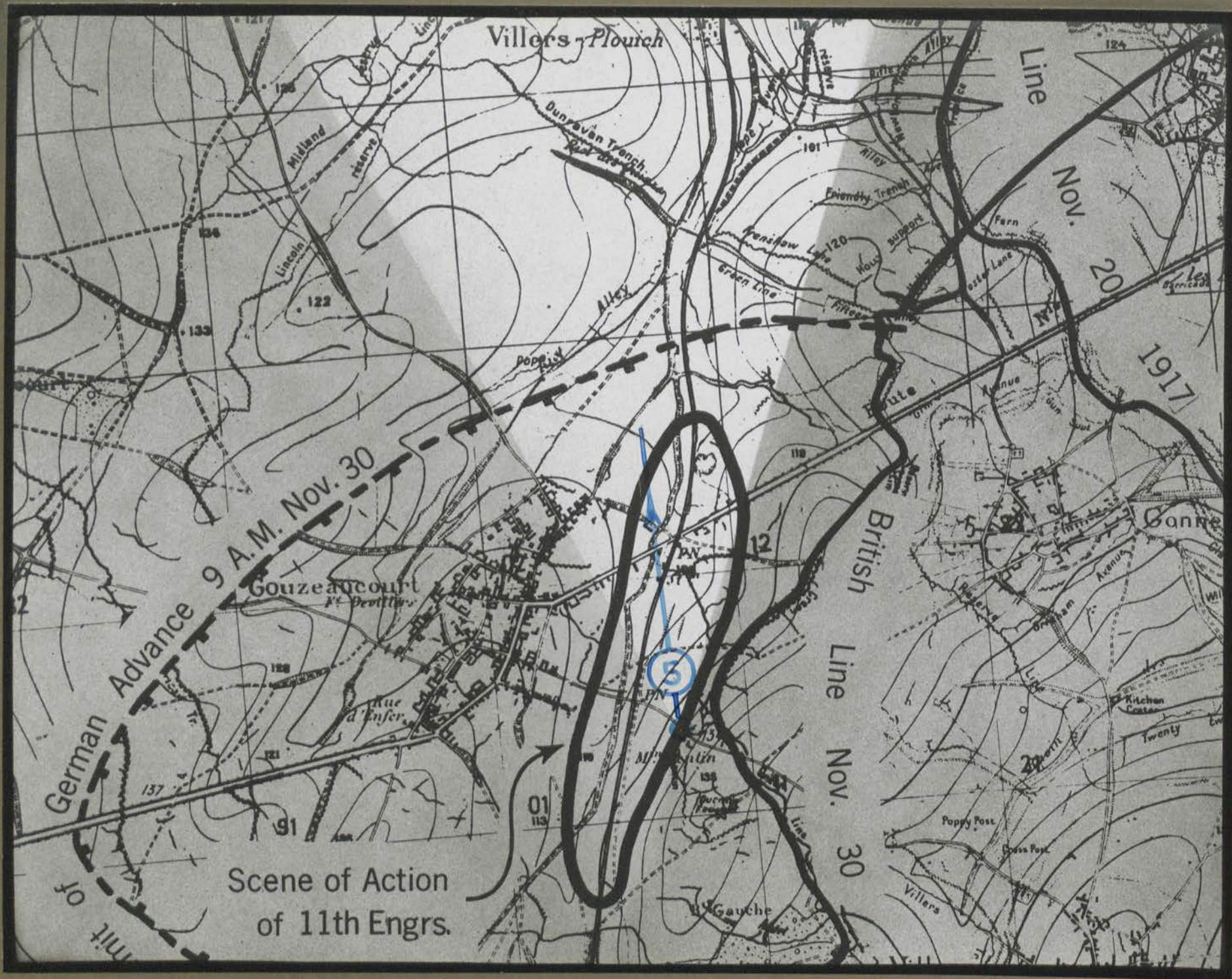












Scene of Action  
of 11th Engrs.



69535

Copyright © 1982

COMBINED ARMS RESEARCH LIBRARY  
FORT LEAVENWORTH, KS



3 1695 00464 6782

LIBRARY  
COMMAND  
AND  
STAFF  
COLLEGE

