

AWARD NUMBER: W81XWH-17-1-0440

TITLE: Computer-Aided Decoding of Brain-Immune Interactions in Gulf War Illness (GWI): A Joint Embedding on Brain Connectomic and Immunogenomic Markers

PRINCIPAL INVESTIGATOR: BANG-BON KOO, PhD

CONTRACTING ORGANIZATION: Boston University School of Medicine, Boston, MA

REPORT DATE: October 2020

TYPE OF REPORT: Annual Report

PREPARED FOR: U.S. Army Medical Research and Materiel Command

Fort Detrick, Maryland 21702-5012

DISTRIBUTION STATEMENT: Approved for Public Release;
Distribution Unlimited

The views, opinions and/or findings contained in this report are those of the author(s) and should not be construed as an official Department of the Army position, policy or decision unless so designated by other documentation.

REPORT DOCUMENTATION PAGE

Form Approved
OMB No. 0704-0188

Public reporting burden for this collection of information is estimated to average 1 hour per response, including the time for reviewing instructions, searching existing data sources, gathering and maintaining the data needed, and completing and reviewing this collection of information. Send comments regarding this burden estimate or any other aspect of this collection of information, including suggestions for reducing this burden to Department of Defense, Washington Headquarters Services, Directorate for Information Operations and Reports (0704-0188), 1215 Jefferson Davis Highway, Suite 1204, Arlington, VA 22202-4302. Respondents should be aware that notwithstanding any other provision of law, no person shall be subject to any penalty for failing to comply with a collection of information if it does not display a currently valid OMB control number. **PLEASE DO NOT RETURN YOUR FORM TO THE ABOVE ADDRESS.**

1. REPORT DATE October 2020		2. REPORT TYPE Annual report		3. DATES COVERED 01Sep2019-31Aug2020	
4. TITLE AND SUBTITLE Computer-Aided Decoding of Brain-Immune Interactions in Gulf War Illness (GWI): A Joint Embedding on Brain Connectomic and Immunogenomic Markers				5a. CONTRACT NUMBER W81XWH-17-1-0440	
				5b. GRANT NUMBER 50206023	
				5c. PROGRAM ELEMENT NUMBER	
6. AUTHOR(S) Bang-Bon Koo E-Mail: bbkoo@bu.edu E-Mail:				5d. PROJECT NUMBER	
				5e. TASK NUMBER	
				5f. WORK UNIT NUMBER	
7. PERFORMING ORGANIZATION NAME(S) AND ADDRESS(ES) Trustees of Boston University 85 E NEWTON ST M 921 BOSTON MA 02118-2340				8. PERFORMING ORGANIZATION REPORT	
9. SPONSORING / MONITORING AGENCY NAME(S) AND ADDRESS(ES) U.S. Army Medical Research and Development Command Fort Detrick, Maryland 21702-5012				10. SPONSOR/MONITOR'S ACRONYM(S)	
				11. SPONSOR/MONITOR'S REPORT NUMBER(S)	
12. DISTRIBUTION / AVAILABILITY STATEMENT Approved for Public Release; Distribution Unlimited					
13. SUPPLEMENTARY NOTES					
14. ABSTRACT We employed a novel classification framework based on a combination of brain connectomics and immuno-genetic approaches of Gulf War Illness (GWI) to develop novel computer-based diagnostic systems and features. In the previous project year, we confirmed that veterans with GWI have clear group specific microstructural alteration in limbic/paralimbic regions compared to GW veterans without illness. This project year, we continued to update subject data and confirmed the patterns consistent with our last year's findings. We published the result in the scientific journal, and the results are also presented in the VA/DoD virtual conference. In this project year, we continued to work on upgrading the machine learning framework to enhance the classification outcomes. We updated the machine learning framework to use the reinforcement learning method to better define key imaging markers for the classification. The new framework provided a significant improvement in classifying veterans with and without GWI. A no-cost extension was requested near the end of this project year to add additional subject data, fine-tuning of the new classifier, and finalizing the software development.					
15. SUBJECT TERMS Gulf War Illness, Neuroimaging, Immune markers, Cognitive markers, Machine learning					
16. SECURITY CLASSIFICATION OF:			17. LIMITATION OF ABSTRACT	18. NUMBER OF PAGES 37	19a. NAME OF RESPONSIBLE PERSON USAMRMC
a. REPORT Unclassified	b. ABSTRACT Unclassified	c. THIS PAGE Unclassified			19b. TELEPHONE NUMBER (include area code)

TABLE OF CONTENTS

	<u>Page</u>
1. Introduction	2
2. Keywords	2
3. Accomplishments	2
4. Impact	9
5. Changes/Problems	10
6. Products	11
7. Participants & Other Collaborating Organizations	13
8. Special Reporting Requirements	16
9. Appendices	17

1. INTRODUCTION:

Gulf War Illness (GWI) refers to the multitude of chronic health symptoms, spanning from fatigue, musculoskeletal pain, and neurological complaints to respiratory, gastrointestinal and dermatologic symptoms, experienced by about 250,000 GW veterans who served in the 1991 Gulf War (GW). Longitudinal studies showed that the severity of these symptoms often remain unchanged even years after the GW, and these veterans with GWI continue to have poorer general health and increased chronic medical conditions than their non-deployed counterparts. For better management and treatment of this condition, there is an urgent need for developing objective biomarkers that can help with simple and accurate diagnosis of GWI. In this project, we are using a novel classification framework based on a combination of brain connectomics and immuno-genetic markers to identify key biomarkers and also to develop novel computer-based diagnostic systems.

2. KEYWORDS:

Gulf War Illness, White matter integrity, Gray matter microstructure, Brain mapping, Morphometry, Neuroinflammation, MRI biomarkers, Cognitive tests, Machine learning, reinforcement learning, Blood Cytokine, Mild Traumatic Brain Injury, Depression, Post Traumatic Stress Disorder, Chemical exposure, Pesticides, Kansas criteria, Sleep quality measure, Pain, Fatigue.

3. ACCOMPLISHMENTS:

What were the major goals of the project?

Research Specific Tasks	Timeline	Status	Re-action plan
Subtask 3: Build a multi-modal classifier of neuroimaging & CSF immune markers (data from 50 GW veterans; 25 cases, 25 controls)	25-27	· Pending, only 7 CSF samples obtained to date from GWIC	· Alternative markers on CNS immune function (TSPO PET/resting fmri) has added and will be tested during NCE.
Subtask 4: Build a multi-modal classifier of neuroimaging, blood and CSF immune markers (data from 50 GW veterans; 25 cases, 25 controls)	25-27	·The classification framework has updated	·The updated framework will be tested on neuroimaging & blood markers.
Subtask 5: Build a multi-modal classifier of Blood & CSF immune markers (data from 50 GW veterans; 25 cases, 25 controls)	27	·The classification framework has updated	·The updated framework will be tested on blood markers.

Subtask 6: Define primary and secondary features of GWI and perform statistical assessments to describe the relationships among them	28	· New neuroimaging features were defined and compared to non-imaging features.	· Supplementary features will be inspected from the new multimodal classifier.
Milestone(s) Achieved: 1. multi-modal GWI classifiers and their benchmark tests 2. descriptions of important features and their relationships	19-29	Partly achieved on the imaging and blood markers.	New markers including alternative data (resting fmri) will be included and multimodal framework will be further validated during NCE.
Specific Aim 3: Building multi-modality classifiers of the sub-symptom clusters			
Major Task 5: Building multi-modal classifiers on the sub-symptom clusters			
Subtask 1: Build a multi-modal classifier per each symptom (and cluster): Joint embedding method	30-31	· Tested on old classification framework. · The classification framework has updated	·The updated framework will be tested in the new framework during NCE
Subtask 2: Build a multi-modal classifier per each symptom (and cluster): Similarity embedding method - including benchmark test between the joint and the similarity embedding	32-33	· Tested on old classification framework. · The classification framework has updated	·The updated framework will be tested in the new framework during NCE
Milestone(s) Achieved: 1. multi-modal classifiers of GWI sub-symptoms 2. descriptions of important symptom features	30-33	Achieved from the original classification framework.	·Additional data will be added and final classifier will be built during NCE.
Overall Aim: Packaging all information			
Major Task 6: Build a software package of GWI connectomic and immunogenomic markers			
Subtask 1: Build a comprehensive software package for distribution	34-36	· Alpha stage development done.	·Additional subject data will be added and software building will be finalized during NCE.
Milestone(s) Achieved: The package will provide: 1. user interactive 3D brain atlas with all features of GWI 2. database of the features 3. linkage between the atlas and the database	34-36	Software package built.	Additional features (e.g., MRI data classifier function) will be updated in the new version.

Major Task 7: Disseminate Study Results			
Subtask 1: Present machine learning computational analysis results at scientific conferences	12-32	Presented in VA/DoD meeting (Aug 18 th ,2020)	
Subtask 2: Prepare machine learning computational analysis results manuscripts and submit for publication	28-36	Imaging marker paper published in BBI (July 31 st , 2020).	Prepare/submit modality ML classification paper.
<i>Milestone(s) Achieved: preliminary data presented at annual scientific conferences and manuscript submission of final data analysis</i>	28-36	Achieved	

What was accomplished under these goals?

1. Major Activities:

Major activities in this project year include the following: 1) building classifiers on GWI control/cases and sub-symptom clusters, 2) defining primary and secondary features for describing GWI, 3) building software package, and 4) presenting and publishing the results.

The following components were added in this project year:

-Novel reinforcement learning based machine learning (ML) classifier: In the previous project year, we updated the machine learning pipeline by adding multi-step random forest and canonical correlation-based random forest (RDF-CCA). As we reported previously, RDF-CCA provided good performances on classifying control and cases. However, the overall performance just using neuroimaging markers were stayed between 70% to 80% range. Best performance was shown in the combined imaging features (NDI+DTI+GM). Although RDF-CCA provided excellent results when it combines symptom measures (PTSD, depression), we developed a new ML concept, reinforcement learning, to improve the performance.

Our new machine learning framework consists of 3 parts -

- 1) a prior-based set-up of feature space,
- 2) key feature selection based on the reinforcement learning,
- and 3) classifier building based on the selected key feature subsets.

In the first part, each imaging feature domain is used for initializing the feature space. The second part of this model is to iteratively search the key feature candidates in the preset feature spaces within the training dataset for potentially better ML outcomes. This strategy can also be expanded to combine imaging and non-imaging markers for building ML framework. Due to the large numbers of features relative to the subject sample size, we applied a feature selection method based on reinforcement learning to select the most important features that provide the best classification performance.

Feature selection framework: The feature selection concept is grounded on the bee swarm algorithm. The bee swarm algorithm mimics the foraging behavior of natural bees by performing an iterative local search for an optimized solution (Drias et al., 2005).

From the predefined feature space (i.e., the output from the first part), several initial solutions that are slightly different are randomly generated, where each will be assigned to a bee to perform a local search to find local optimum (based on cross-validation accuracy). Each bee's local search will continue until no further improvement occurs, then the search will begin to diversify. The search process will terminate based on the pre-defined parameters.

Reinforcement Learning (RL) is one of the ML techniques that enables an agent to learn through an interactive environment (i.e., sharing experiences between agents and also accounting for their previous experiences) by trial and error. Combining with the bee swarm algorithm, our classifier learns to search for a solution (i.e., resulting feature list) that maximizes the reward (i.e., higher classification accuracy) through multiple iterations. This concept is to upgrade a simple local search to a more adaptive and efficient search for the final solution.

Finally, the last part of this method builds the classification model. From the RL-based feature selection in the training dataset, top candidate feature vectors are built into the KNN classifier (Goldberger et al., 2005). We used a majority voting strategy to merge key solutions to have unbiased classification results. This updated ML concept was applied to unimodal imaging features and then compared to the previous ML framework.

-Adding different models for multi-dimensional diffusion mapping: Previously, we suggested to use high-angular diffusivity (HARDI), diffusion kurtosis (DKI), microstructural diffusivity, and neurite density imaging (NDI) to extract different diffusion components from the multi-dimensional diffusion image. The variations in results from other studies make it difficult to draw integrative and generalizable conclusions based on different diffusion modeling techniques. The multiple diffusion model generation framework we used was to explain the relationships among the markers derived from different microstructural diffusion encodings— i.e. NDI, DKI, etc.— which have yet to be thoroughly examined. Additionally, we have added freewater diffusion modeling (FW) this year. FW can be applied to both multi-b and single-b diffusion MRI. This method separates free-water components surrounding the brain tissue from diffusion tensor modeling. We added the function to process FW in the current pipeline. The added feature estimates FW volume and free-water corrected diffusion maps (FA, MD) in addition to the standard DTI maps. For single-b diffusion FW, we used single shell reconstruction scheme for free-water DTI [Golub et al., 2019]. All these measures are updated in the datasheet.

2. Specific objectives:

In this project year, we continued to add high quality post-processed data and develop neuroimaging classifiers. We specifically aimed to build a more efficient machine learning framework to define key neurological markers from imaging data to integrate different biomarkers from different biological domains (imaging to cytokine markers) to investigate meaningful insight into GWI etiology.

3. Significant results:

In project year 3, neuroimaging data collection has still yet to reached the planned sample size (175 from Boston site, 75 from Texas site). By the end of Aug, 168 subject data from the GWIC were transferred to the research team and have been processed. Significant results in this report were based on the data from 146 subjects. In the following sub-sections, we listed several important information achieved in the project year 3.

3A. Consistent group specific patterns after adding more subjects:

Multicompartmental diffusion in the major white matter (WM) fibers consistently showed signs of weakened WM integrity (lowered neurite density). Overall pattern was consistent to our previous findings. All major WM tracts showed significant differences in ND and OD for GWI cases compared to controls. The greatest significant group differences between GWI cases and controls were seen in the bilateral corticospinal tracts (CST, FDR-p < 0.02) and the bilateral anterior thalamic radiations (ATR, FDR-p = 0.02) for WM ND, and the bilateral cingulum cingulate gyrus bundle (CCG, FDR-p < 0.01) for WM OD.

The greatest significant group differences between GWI cases and controls in the grey matter (GM) were also consistent to the previous findings. By adding more subjects, more bilateral patterns were confirmed. GM regions include the left isthmus of cingulate gyrus, the bilateral thalamus, the bilateral caudal anterior cingulate gyrus, the bilateral posterior cingulate gyrus, the bilateral amygdala and the bilateral putamen (*Figure 1*).

3B. Improved classification performance from the reinforcement learning framework:

We tested the new RL framework to classify GW controls and cases. We first tested the framework on unimodal measurements – i.e., measures from single modality scans, such as T1-weighted structural MRI (T1W-MRI), DTI, or NDI. Similar to our previous ML, the results from the PL also supported NDI as the most sensitive in defining GWI characteristics. However, the new framework provided 93.6% performance (f-score) and 90% (accuracy, highest: 95%) after the cross-validation in WM OD features. The specific features were the left CST, the corpus callosum forceps minor (fminor), the left inferior fronto-occipital fasciculus (IFOF), the left inferior longitudinal fasciculus (ILF), the left superior longitudinal fasciculus (SLF), and the left superior longitudinal fasciculus temporal (SLFT).

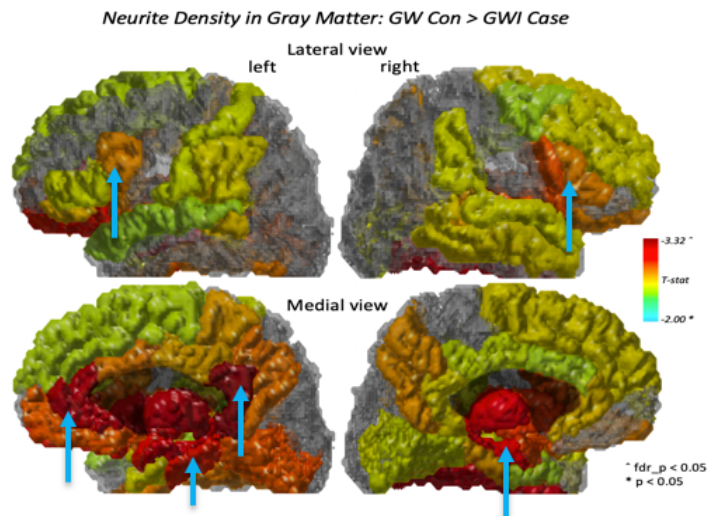


Figure 1. GWI cases vs. Control group comparisons of GM and summary of significant regions (colored regions).

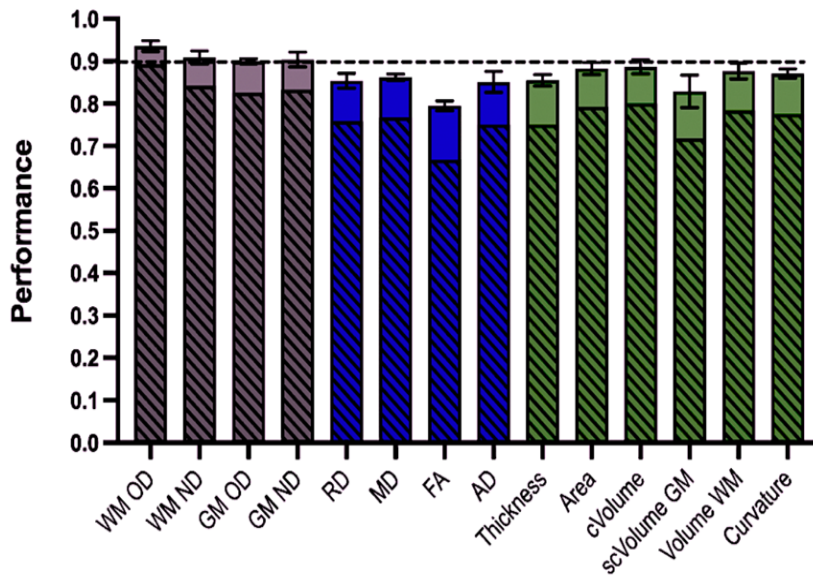


Figure 2. Classification performances of all classifiers.

The second-best classifier is trained using the combined GM ND measures (90.4%). The key features used by this GM classifier include both cortical and subcortical structures of the limbic system, including the bilateral caudal anterior cingulate gyri. Previously, the best ML performance was shown in the multi-modal classifier (T1w+NDI/DTI) at 80% accuracy. Compared to this, our new framework performed significantly better (more than 10% in f-score) even in unimodal classification testing. This was very promising result and we are now planning to test the RL

framework on multimodal imaging and non-imaging biomarkers.

4. Other achievements:

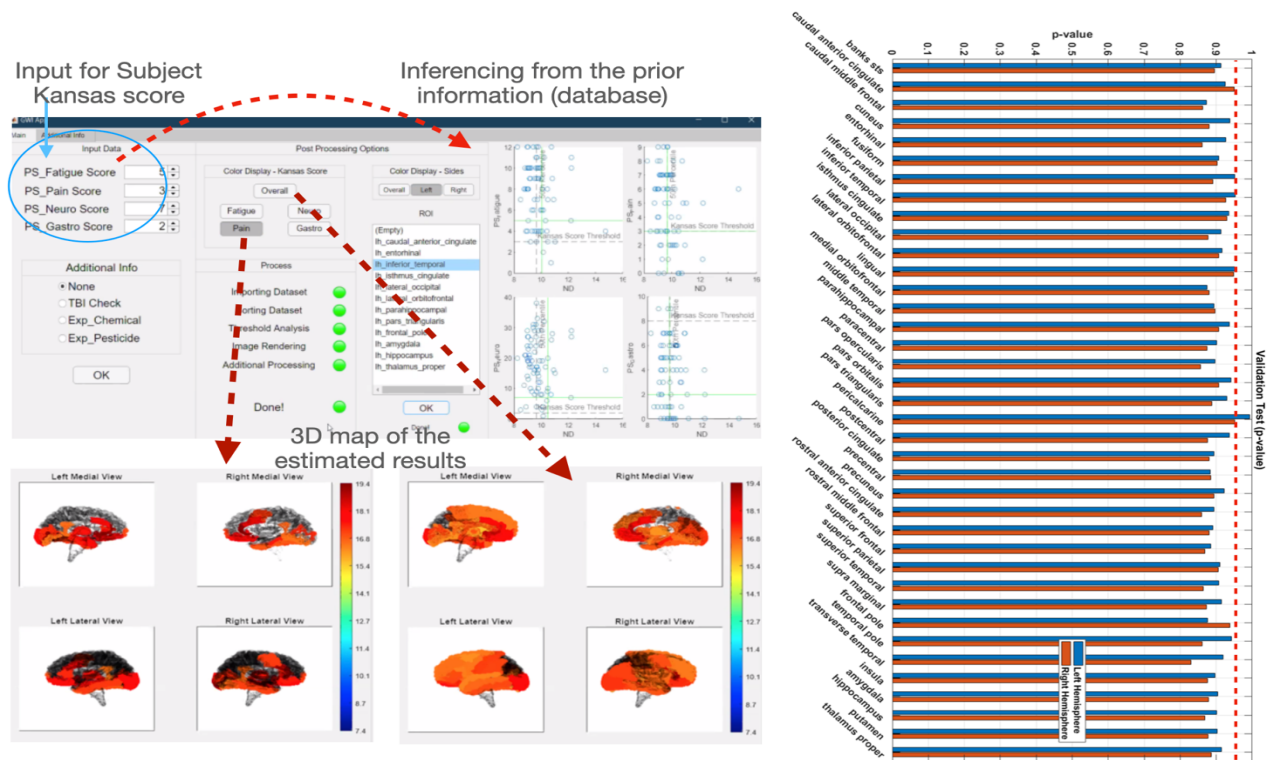


Figure 3. Software building (Bayesian inferencing). Graph in the right side shows statistical comparison ($1-p$ -value) between subject diffusion map and estimated map. Red vertical dot line indicates $p < 0.05$ level. Most of ROIs showed no significant differences between the real scan and the estimated map.

In this project year, we performed the alpha stage (i.e., internally tested) development of software with graphical interface (*Figure 3*). We designed the software to provide 1) estimation of NDI imaging measures from 4 different Kansas domain scores (fatigue, pain, neuro, and gastro), and 2) classifying subject into control or case based on the subject data (imaging or non-imaging). The idea on the first part was to make the software estimating NDI imaging measures from subject's Kansas scores by referring the prior information from the database. *This inferencing approach can be also applied to predict the probability of illness symptom (e.g., PSQI).* For the alpha stage testing, we only applied this technique to estimate NDI measures. The development of second part is still on-going since we need to test multimodal classifiers. Once the classification benchmark testing is done, we will integrate the function into the software. After this stage, we will move onto the beta stage- i.e., sharing the software to professionals outside our group to have the feedbacks and use it for modifying the software structure.

What opportunities for training and professional development has the project provided?

-PI planned to attend an international conference (PsychoNeuroImmunology Research Society) on June 3, 2020. However, the meeting was cancelled due to the COVID19.

-PI's team members (research technician, 2 research assistants) have been working on this project. PI provided trainings on computer programming and neuroimage processing. PI also provided one-to-one mentorship on RAs in the weekly meeting.

-PI attended GWIC web meetings (PI:Dr.Sullivan) and shared up-to-date findings with other researchers in the consortium. Co-investigators and consultants in this project (Drs.Steele and Klimas) attended the meeting and discussed the results. Dr.O'Callaghan also participated in the meeting and discussed about the GWI animal model study.

How were the results disseminated to communities of interest?

Most of the works done in year 3 were reported at VA/DoD virtual meeting (Aug. 18th, 2020). Also, all the imaging measures have been shared to GWIC researchers, DoD officers and veterans who attended the meeting.

What do you plan to do during the next reporting period to accomplish the goals?

- This project has approved for the no-cost extension for one year.

- We will continue to update subject data and finalize building the classifiers combining imaging and non-imaging dataset.
- We will continue to explore new imaging markers (e.g., TSPO PET, resting fMRI) extracted from the existing GWIC dataset to enhance the classification outcomes.
 - a. Processing the resting functional MRI data is on-going
 - b. TSPO PET data has been transferred to the research team from BBRAIN data repository recently. We will directly compare the glial PET markers with diffusion data in the GW veteran.
- We will finalize building smart database software containing all the results achieved from this project.

4. IMPACT:

What was the impact on the development of the principal discipline(s) of the project?

- In this project, we showed with more clear evidences that neuroimaging markers help to explain biological mechanisms underlying GWI symptoms. An early study on GW veterans showed that

fatigue, pain and hyperalgesia are associated with alterations in the diffusion measures in the right IFOF (Rayhan et al., 2013) or fronto-limbic connections (Bierer et al., 2015). Our results from the ML framework are not only supporting previous findings but also expands the understandings on GWI.

-For the first time, we showed that these markers could also be valuable for a single-subject level diagnosis on GWI.

- The features that are highlighted by our analysis suggest neurological changes underlying GWI pathology and support neuroinflammation as a potential target for therapeutic interventions. Considering our previous findings, we are also expecting improved classification performance from the multimodality features.

- Development of objective markers can provide basis information on adjusting clinical criteria or exploring alternate (easy to obtain) biomarkers.

What was the impact on other disciplines?

- Microstructural profiles in the brain can also provide key information to understanding neuronal degenerative and/or regenerative mechanisms in normal and pathological aging processes. Synaptic loss and microgliosis have been demonstrated to be the earliest features, even preceding neuronal loss and tangle formation, in a tauopathy mouse model, suggesting the importance of understanding the microstructural profiles that characterize the early events of human tauopathies [Yoshiyama et

al., 2007]. Furthermore, alterations in synaptic/dendritic compartments are tied to tau pathology in both Alzheimer's disease (AD) and frontotemporal dementia (FTD), while linkage to A β was found only in AD [Ittner et al., 2018].

- In this project, we have found promising "hints" that the novel multi-compartmental diffusion markers can provide key information to understand the neuro-immune interactions by capturing microstructural change. Considering the neuroimmune component in Alzheimer's disease and related dementia, the data obtained here suggest that these markers can be valuable for deriving microstructural information in those cohort to obtain further insights in-vivo.

-Predicting the progression of AD is challenging, and the classifiers generally achieved an accuracy ranging from **70-80%** using only conventional MRI features. The ML framework using novel MRI markers suggested in this project can be a potential solution to improve the performance.

What was the impact on technology transfer?

Nothing to report.

What was the impact on society beyond science and technology?

-Providing the objective markers with a sophisticated computational framework on a single subject level diagnosis can help improving clinical decisions and further development of clinical protocols for finding better cure for GWI.

5. CHANGES/PROBLEMS:

Changes in approach and reasons for change

Nothing to report.

Actual or anticipated problems or delays and actions or plans to resolve them

-PI's team had to change the research set up to do computation work at home due to the COVID19 situation (February to April period 2020). We changed the research setup to work in a completely remote computing environment.

- Due to the invasive protocol to collect CSF cytokine, GWIC collected CSF markers from 7 subjects. Although Boston GWIC will keep trying to collect those measures, PI is also planning to use alternative markers for central immune measures.

a. PI received the translocator protein positron emission tomography (TSPO-PET) imaging from Dr. Marco Loggia's group (Martinos Center for Biomedical Imaging, Harvard Medical School, Boston MA) TSPO-PET has been an innovative tool to imaging glial activations in the brain in-vivo. Dr. Loggia's team has collected TSPO-PET imaging and diffusion MRI from GWI and control veterans. PI's group started work on processing this data to validate diffusion markers based on glial activation map quantified from TSPO-PET. This is to compensate the lack of CSF markers and further study the relationships between diffusion and other markers.

b. PI's team is also working on processing resting state functional MRI. Chronic neuroinflammation can be associated with changes in microvasculature and also alter functional connectivity.

Changes that had a significant impact on expenditures

Nothing to report.

Significant changes in use or care of human subjects, vertebrate animals, biohazards, and/or select agents

Nothing to report.

Significant changes in use or care of human subjects

Nothing to report.

Significant changes in use or care of vertebrate animals

Nothing to report.

Significant changes in use of biohazards and/or select agents

Nothing to report.

6. PRODUCTS:

- **Publications, conference papers, and presentations**

Journal publications.

Cheng CH, Koo BB, Calderazzo S, Quinn E, Aenlle K, Steele L, Klimas N, Kregel M, Janulewicz P, Toomey R, Michalovicz LT, Kelly KA, Heeren T, Little D, O'Callaghan JP, Sullivan K. Alterations in high-order diffusion imaging in veterans with Gulf War Illness is associated with chemical weapons exposure and mild traumatic brain injury. *Brain Behav Immun.* 2020 Oct; 89:281-290. PMID: [32745586](#); DOI: [10.1016/j.bbi.2020.07.006](#);

Books or other non-periodical, one-time publications.

Nothing to Report.

Other publications, conference papers and presentations.

Nothing to Report.

- **Website(s) or other Internet site(s)**

Nothing to Report.

- **Technologies or techniques**

Nothing to Report.

- **Inventions, patent applications, and/or licenses**

Nothing to Report.

- **Other Products**

The research team has continuously updated a pipeline for defining novel neuroimaging biomarkers and also designed new classification framework for GWI based on those markers. In the next project year, this technology will be further validated using larger data samples and packaged into the software package with 3D visualization function.

7. PARTICIPANTS & OTHER COLLABORATING ORGANIZATIONS

What individuals have worked on the project?

Name:	<i>Bang-Bon Koo</i>
Project Role:	<i>Principal Investigator / No Change</i>
Researcher Identifier (e.g. ORCID ID):	
Nearest person month worked:	<i>no change</i>
Contribution to Project:	
Funding Support:	

Name:	<i>Kimberly Sullivan</i>
Project Role:	<i>Co-investigator / No Change</i>
Researcher Identifier (e.g. ORCID ID):	
Nearest person month worked:	<i>no change</i>
Contribution to Project:	
Funding Support:	

Name:	<i>Ron Killiany</i>
Project Role:	<i>Co-investigator / No Change</i>
Researcher Identifier (e.g. ORCID ID):	
Nearest person month worked:	<i>no change</i>
Contribution to Project:	
Funding Support:	

Name:	<i>Timothy Heeren</i>
Project Role:	<i>Co-investigator / No Change</i>

Researcher Identifier (e.g. ORCID ID):

Nearest person month worked: *no change*

Contribution to Project:

Funding Support:

Name: *Jasmine Cheng*

Project Role: *Research Technician*

Researcher Identifier (e.g. ORCID ID):

Nearest person month worked: *6*

Contribution to Project: *Ms. Cheng has been working on software programming, data processing and organizing the imaging measurement outcomes.*

Funding Support:

Name: *Wendy Guo*

Project Role: *Research Assistant*

Researcher Identifier (e.g. ORCID ID):

Nearest person month worked: *3*

Contribution to Project: *Ms. Guo has been working on data processing and organizing the imaging measurement outcomes.*

Funding Support:

Name: *Yi Guan*

Project Role: *Research Assistant*

Researcher Identifier (e.g. ORCID ID):

Nearest person month worked: *3*

Contribution to Project: *Ms. Guan worked on software programming.*

Funding Support:

Has there been a change in the active other support of the PD/PI(s) or senior/key personnel since the last reporting period?

Principal Investigator (Dr.Bang-Bon Koo):

Title: Defining and Characterizing GWI Pathobiology using Longitudinal Brain Imaging Biomarkers of White Matter Integrity and Hemodynamic Response

Supporting Agency: Department of Defense (CDMRP/GWIRP GW180099)

P.I.: Sullivan

Duration: 9/01/18 – 8/31/21

Effort: 1.56

Title: Validating Novel Brain Imaging Biomarkers for classifying mild Traumatic Brain Injury and subsequent risks of Alzheimer's Disease in Gulf War Veterans

Supporting Agency: DoD (CDMRP/PRARP AZ190038)

P.I.: KOO

Duration: 05/01/2020-04/31/2023

Effort: 2.28

Title: Neural substrates of exosome-mediated enhancement of recovery after cortical injury in non-human primates.

Supporting Agency: NIH/NINDS

P.I.: Moore

Duration: 04/01/20-03/31/2025

Effort: 0.60

Title: Extracellular Vesicle treatment and age-related neuropathology in non-human primates

Supporting Agency: NIH/NINDS

P.I.: Moore

Duration: 07/01/20-06/30/2025

Effort: 0.60

Title: National Emerging Infectious Diseases Laboratories Operations (Y1 Core 5 ISS-SAL 9500305795)

Supporting Agency: NIH

P.I.: Corley

Duration: 07/01/20-06/30/2021

Effort: lowered down to 2.4

Co-Investigator (Dr.Kimberly Sullivan):

Title: Defining and Characterizing GWI Pathobiology using Longitudinal Brain Imaging Biomarkers of White Matter Integrity and Hemodynamic Response

Supporting Agency: Department of Defense (CDMRP/GWIRP GW180099)

P.I.: Sullivan

Duration: 9/01/18 – 8/31/21

Effort: 0.84

Title: Clarifying the Role Played by Microglia and Astrocyte Activation in Veterans with Gulf War Illness Using Positron Emission Tomography

Supporting Agency: Department of Defense (CDMRP/GWIRP GW180099)

P.I.: Killiany

Duration: 10/01/19 – 09/30/22

Effort: 0.6

Title: Identifying Objective Diagnostic Markers of Gulf War Illness: Salivary and Plasma Autoantibodies Against Neural Proteins Validated With Brain Imaging

Supporting Agency: Department of Defense (CDMRP/GWIRP GW180099)

P.I.: Abou Donia

Duration: 9/30/19 – 9/29/22

Effort: 0.6

What other organizations were involved as partners?

- Organization Name: Baylor College of Medicine
Location of Organization: *One Baylor Plaza, Houston TX 77030*
Partner's contribution to the project: Consultant
Financial support: none
In-kind support (*e.g., partner makes software, computers, equipment, etc., available to project staff*): Discussions on the project
Facilities: None
Collaboration: responsible for managing the Texas site data and consulting on GWI symptoms on this project.
Personnel exchanges
Other.

- Organization Name: Nova Southeastern University
Location of Organization: 3301 College Ave, Fort Lauderdale, FL 33314
Partner's contribution to the project: Consultant
Financial support: none
In-kind support (*e.g., partner makes software, computers, equipment, etc., available to project staff*): Discussions on the project
Facilities: None
Collaboration: consulting immunogenetics part on this project.
Personnel exchanges
Other.

8. SPECIAL REPORTING REQUIREMENTS

Nothing to report

9. APPENDICES:

-References

Bierer, L.M.; Ivanov, I.; Carpenter, D.M.; Wong, E.W.; Golier, J.A.; Tang, C.Y.; Yehuda, R. et al. White matter abnormalities in Gulf War veterans with posttraumatic stress disorder: A pilot study. *Psychoneuroendocrinology*. 2015, ;51, :567-576. doi:10.1016/j.psyneuen.2014.11.007.

Drias, H., Sadeg, S., & Yahi, S. (2005, June). Cooperative bees swarm for solving the maximum weighted satisfiability problem. In *International Work-Conference on Artificial Neural Networks* (pp. 318-325). Springer, Berlin, Heidelberg.

Ittner A, Ittner LM: Dendritic Tau in Alzheimer's Disease. *Neuron* 99:13-27, 2018

Rayhan, R.U.; Stevens, B.W.; Timbol, C.R.; Adewuyi, O.; Walitt, B.; VanMeter, J.W.; Baraniuk, J.N.. Increased Brain White Matter Axial Diffusivity Associated with Fatigue, Pain and Hyperalgesia in Gulf War Illness. . 2013, 8(3), e58493. doi:10.1371/journal.pone.0058493.

Yoshiyama Y, Higuchi M, Zhang B, Huang SM, Iwata N, Saido TC, et al: Synapse loss and microglial activation precede tangles in a P301S tauopathy mouse model. *Neuron* 53:337-351, 2007

-Presentation & Publication materials (attached)

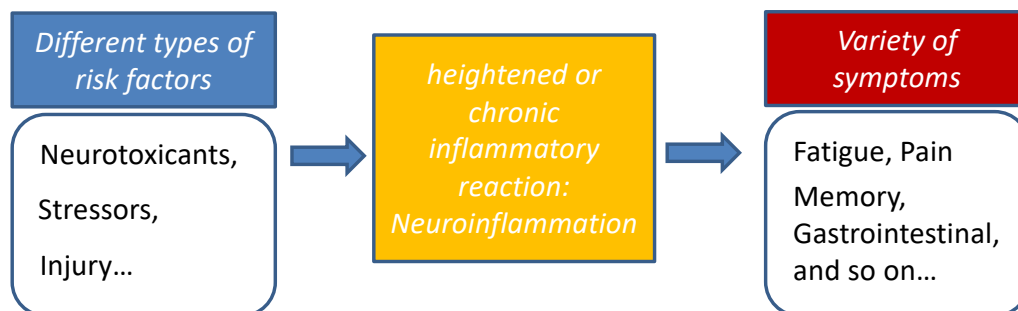
In-vivo imaging of GWI

Bang-Bon Koo, PhD

Bio-imaging & Informatics Lab.
Boston University School of Medicine
August 18, 2020

Imaging GWI

In-vivo imaging of immune response in the brain can be a key to study Neuroimmune model of GWI

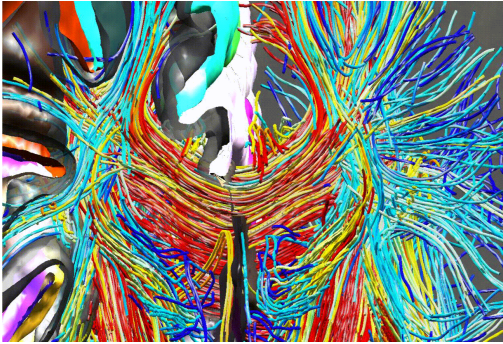


"Our goal was to develop an objective imaging biomarker"

The 2nd Generation Diffusion MRI

The key concept on the GWIC imaging design was to utilize the 2nd generation diffusion MRI.

DTI



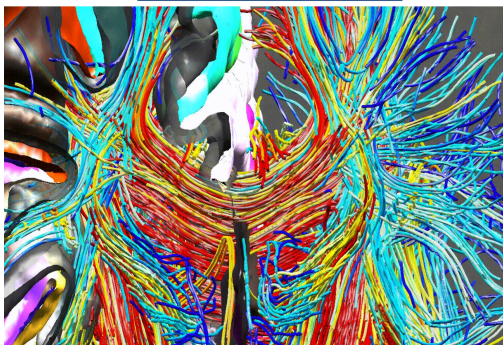
2nd Gen Multi-B dMRI

- White matter modeling
- Cortico-cortical connections
- WM degeneration

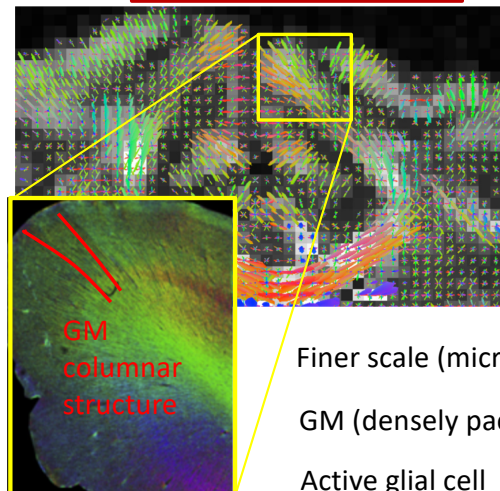
The 2nd Generation Diffusion MRI

The key concept on the GWIC imaging design was to utilize the 2nd generation diffusion MRI.

DTI



2nd Gen Multi-B dMRI



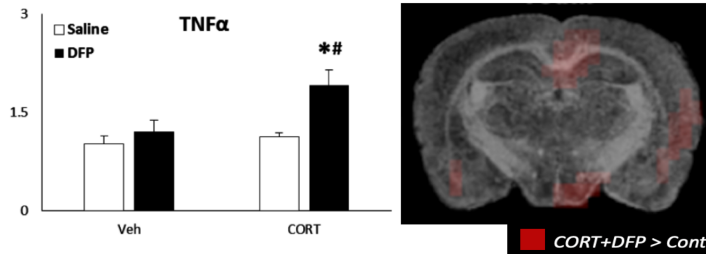
- White matter modeling
- Cortico-cortical connections
- WM degeneration

- Finer scale (micro)
- GM (densely pack region)
- Active glial cell
- Subneuronal components e.g.) synaptic loss

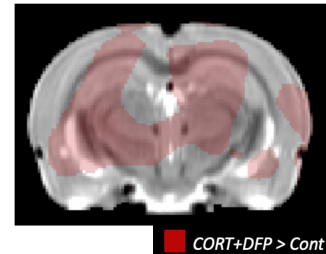
2nd Gen diffusion MRI in Animal model

DFP+CORT exposure to Rat Brain (O'Callaghan, 2015)

Acute model



Chronic model



Brain, Behavior, and Immunity 67 (2018) 42–46

Corticosterone potentiates DFP-induced neuroinflammation and affects high-order diffusion imaging in a rat model of Gulf War Illness

Persistent patterns

Bang-Bon Koo^{a,*,1}, Lindsay T. Michalovicz^{b,1}, Samantha Calderazzo^a, Kimberly A. Kelly^b, Kimberly Sullivan^c, Ronald J. Killiany^a, James P. O'Callaghan^b

Diffusion MRI in GW veterans

White matter assessments

All Subjects	GW Control	GW Case
N	22	124
Age (years)	54.84	52.58
Gender (F/M)	3/19	25/99
Exposure to risk factors during war (% exposed)		
Chemical/Biological Warfare Agents	3	52

Multi-B dMRI

WM NDI BU subjects group stats

WM tracts	ND		OD	
	LH	RH	LH	RH
Fmajor	-2.779*			-2.645
Fminor		-2.688*		-3.062*
ATR	-2.765*	-2.619*	-2.914*	-2.827*
CST	-3.119*	-3.129*	-3.335*	-2.533*
CCG	-2.275*	-1.950*	-3.434*	-2.660*
CAB	-2.597*	-2.195*	-2.307*	-1.988*
IFOF	-2.594*	-2.537*	-2.844*	-2.839*
ILF	-2.363*	-2.316*	-2.128*	-2.314*
SLF	-2.513*	-2.789*	-2.513*	-2.570*
UNC	-2.478*	-2.437*	-2.966*	-2.999*
SLFT	-2.293*	-2.843*	-2.005*	-2.277*

* fdr_p < 0.05

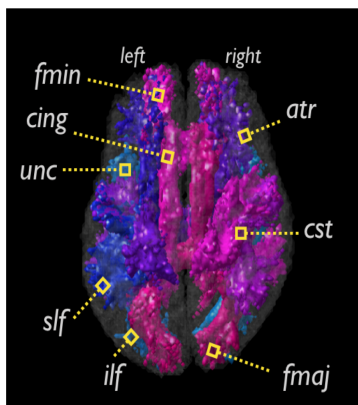
DTI

WM DTI BU subjects group stats

WM tracts	FA		AD		MD		RD	
	LH	RH	LH	RH	LH	RH	LH	RH
Fmajor	-0.997		-2.517*		-1.346			-0.149
Fminor		-0.486		-2.819**		-1.818		-1.041
ATR	0.416	-0.983	-0.320	-0.789	-0.387	-0.224	-0.361	0.210
CST	-0.235	-0.764	0.200	-0.551	0.405	-0.007	0.440	0.536
CCG	0.372	1.036	0.117	0.415	-0.188	-0.609	-0.297	-0.969
CAB	0.387	0.626	0.553	-1.779	0.322	-2.052	0.092	-1.779
IFOF	0.590	-0.474	-0.694	-2.126*	-1.080	-1.674	-1.161	-1.142
ILF	-0.391	-0.533	-2.274*	-2.783**	-1.588	-1.970	-0.999	-1.166
SLF	-0.755	-0.862	-0.912	-1.639	-0.449	-1.027	-0.073	-0.280
UNC	1.175	0.896	-0.666	-1.292	-1.584	-1.751	-1.637	-1.493
SLFT	-0.659	-0.432	-1.220	-1.113	-0.785	-0.718	-0.223	-0.191

* p < 0.05

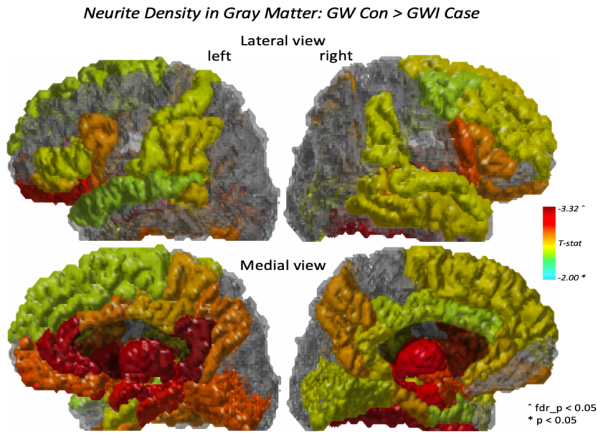
** p < 0.01



Grey matter assessment

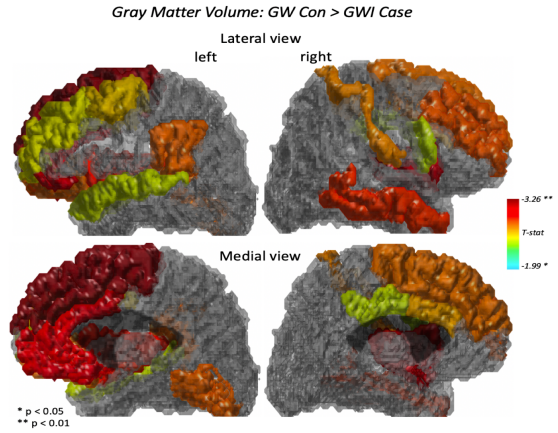
Multi-B dMRI

Morphometry



Limbic/Paralimbic regions

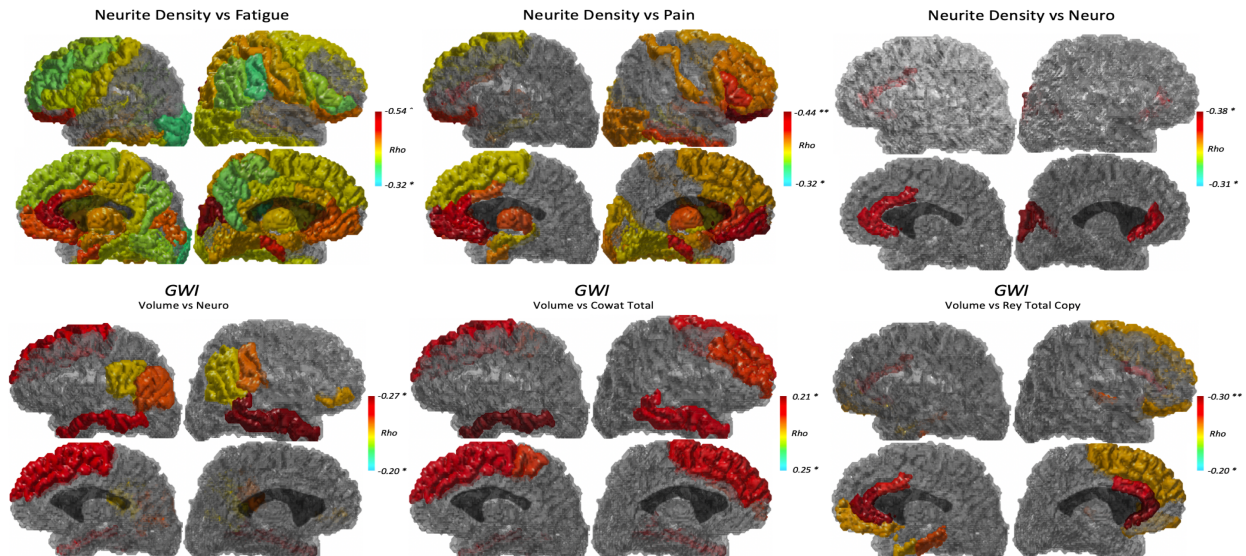
:Which communicates with autonomic nervous system, endocrine system and the viscera.



Not sig. under FDR

Diffusion vs Kansas Domains

GM diffusion measures ~ Kansas Fatigue, Pain, Gastro domains

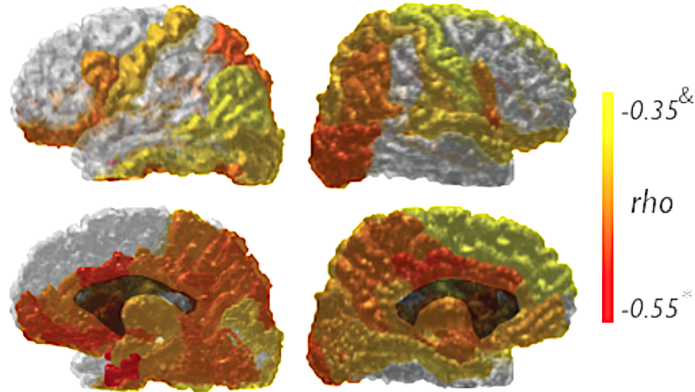


Morphometry vs Neuro/Cognitive

: indicating different neurological basis for different symptoms?

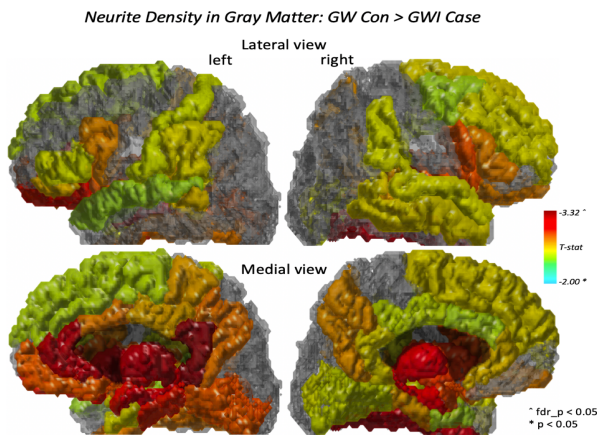
Diffusion vs Sleep deprivation

Neurite Density vs. PSQI

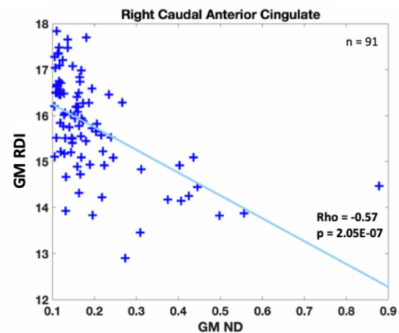
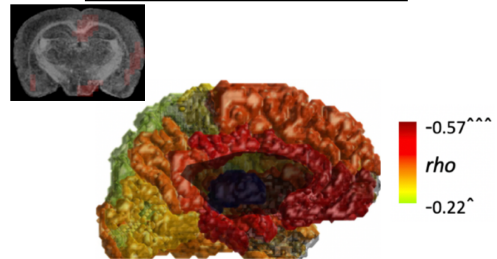


ND vs Other multi-B diffusion reconstruction methods

Multi-B dMRI



Different reconstruction methods



Also, consistent with DKI, FW

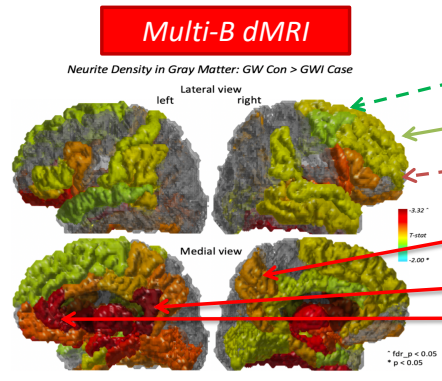
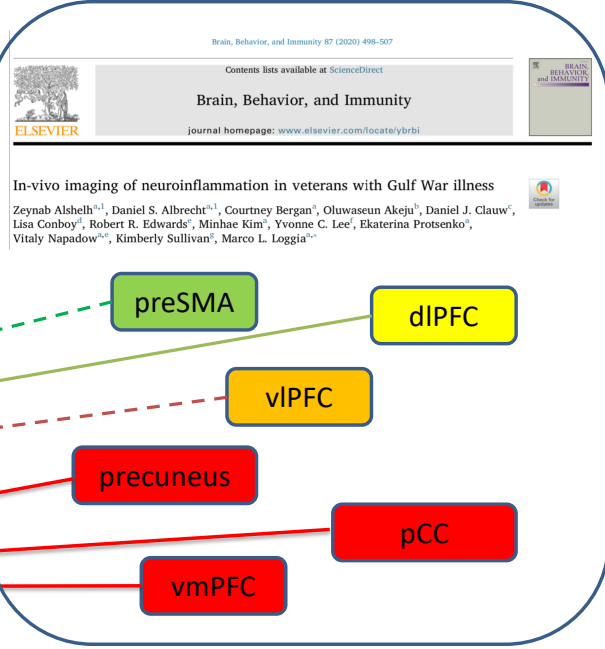
The 2nd Gen DMRI and TSPO PET

Overlap between DMRI and glial PET scans

Brain, Behavior, and Immunity
Available online 31 July 2020
In Press, Journal Pre-proof

Alterations in high-order diffusion imaging in veterans with Gulf War Illness is associated with chemical weapons exposure and mild traumatic brain injury

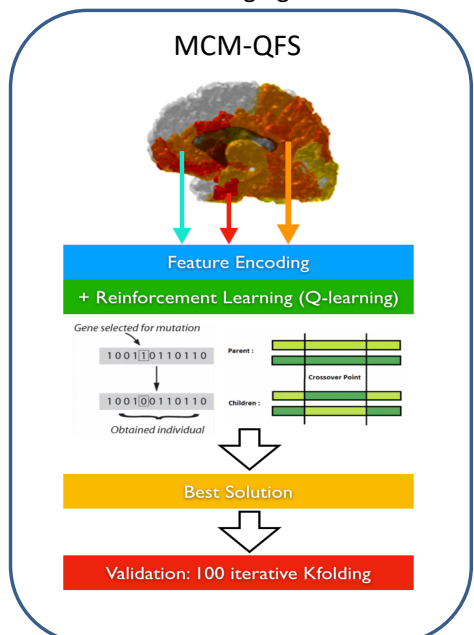
Chia-Hsin Cheng ^{a,1}, Bang-Bon Koo ^{a,1,2}, Samantha Calderazzo ^a, Emily Quinn ^b, Kristina Aenlle ^{c,d}, Lea Steele ^e, Nancy Klimas ^f, Maxine Kregel ^g, Patricia Janulewicz ^h, Rosemary Toomey ^h, Lindsay Michalowicz ^h, Kimberly A Kelly ^h, Timothy Heeren ^h, Deborah Little ^h, James O'Callaghan ^h, Kimberly Sullivan ^h



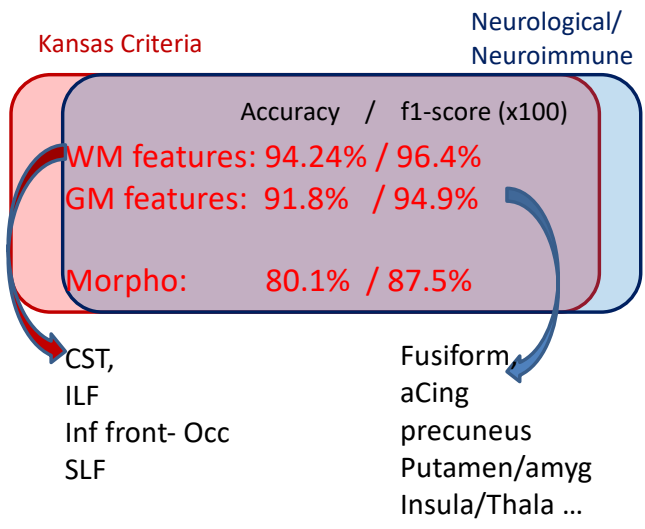
MRI markers for single subject level diagnosis

“Can MRI markers from GWIC predict Kansas criteria?”

Machine learning framework based on novel imaging features



Classifying GWI cases and controls from MRI



More control veteran subject data is needed for complete validation!!

Change in microstructural diffusivity measure may fingerprint the ***chronic impact of neuroinflammation*** and ***highlighting the regions vulnerable to further tissue damage*** in later life.

- ➡ Lowered microstructural diffusivity : widespread WM and Limbic/paralimbic GM
- ➡ Better distinction between GWI cases and controls than morphological markers.
- ➡ Explaining Kansas Fatigue, pain and Gastro domain scores.
However, Neuro/cognitive measures were better explained in Morphometrical measures
- ➡ Difference pattern overlaps to the GWI animal model study and TSPO pet data.
- ➡ Diffusion markers provided promising results in a single subject level classification trial.
More control subject data is required for further investigation.

This work is supported by a department of Defense CDMRP GWI award (W81XWH-17-1-0440) and GWI consortium award (W81XWH-13-2-0072).

Bio-imaging Informatics Lab.

<https://www.bumc.bu.edu/anatneuro/research/bio-imaging-informatics-lab/>



PI: Bang-Bon Koo (bbkoo@bu.edu)

Jasmine Cheng

Yi Guan

Weifan Chen

Samantha Calderazzo

Wendy Guo

Sophia Koo

Jason Hong

Christian Arthur

Prinjali Kalyan

Chancellor Lee

Collaborators

BU-SPH



Dr. Kimberley Sullivan

CDC



Dr. Timothy Heeren



Dr. James O'Callaghan

Baylor



Dr. Lea Steele

MGH



Dr. Marco Loggia

Nova



Dr. Nancy Klimas

BIDMC



Dr. Rafeeqe Bhadelia

SMC



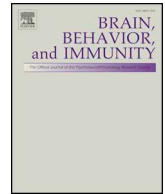
Dr. Jaehoon Kim



ELSEVIER

Contents lists available at ScienceDirect

Brain, Behavior, and Immunity

journal homepage: www.elsevier.com/locate/ybrbi

Alterations in high-order diffusion imaging in veterans with Gulf War Illness is associated with chemical weapons exposure and mild traumatic brain injury

Chia-Hsin Cheng^{a,1}, Bang-Bon Koo^{a,*,1}, Samantha Calderazzo^a, Emily Quinn^b, Kristina Aenlle^{c,d}, Lea Steele^e, Nancy Klimas^f, Maxine Krengel^b, Patricia Janulewicz^b, Rosemary Toomey^b, Lindsay T. Michalovicz^g, Kimberly A Kelly^g, Timothy Heeren^b, Deborah Little^h, James P. O'Callaghan^g, Kimberly Sullivan^{b,*}

^a School of Medicine, Boston University, Boston, MA, USA

^b School of Public Health, Boston University, Boston MA USA

^c Nova Southeastern University, Fort Lauderdale, FL, USA

^d Department of Veterans Affairs, Miami VA Healthcare System, Research Service, Miami, FL, USA

^e Baylor College of Medicine, Houston, TX, USA

^f Nova Southeastern University, Fort Lauderdale, FL, USA

^g Health Effects Laboratory Division, Center for Disease Control and Prevention – National Institute for Occupational Safety and Health, Morgantown, WV, USA

^h University of Texas, Houston, TX, USA

ARTICLE INFO

Keywords:

Gulf War Illness

Veterans

Cytokines

Neuroinflammation

Diffusion imaging

MRI

ABSTRACT

The complex etiology behind Gulf War Illness (GWI) has been attributed to the combined exposure to neurotoxicant chemicals, brain injuries, and some combat experiences. Chronic GWI symptoms have been shown to be associated with intensified neuroinflammatory responses in animal and human studies. To investigate the neuroinflammatory responses and potential causes in Gulf War (GW) veterans, we focused on the effects of chemical/biological weapons (CBW) exposure and mild traumatic brain injury (mTBI) during the war. We applied a novel MRI diffusion processing method, Neurite density imaging (NDI), on high-order diffusion imaging to estimate microstructural alterations of brain imaging in Gulf War veterans with and without GWI, and collected plasma proinflammatory cytokine samples as well as self-reported health symptom scores. Our study identified microstructural changes specific to GWI in the frontal and limbic regions due to CBW and mTBI, and further showed distinctive microstructural patterns such that widespread changes were associated with CBW and more focal changes on diffusion imaging were observed in GW veterans with an mTBI during the war. In addition, microstructural alterations on brain imaging correlated with upregulated blood proinflammatory cytokine markers TNFRI and TNFRII and with worse outcomes on self-reported symptom measures for fatigue and sleep functioning.

Taken together, these results suggest TNF signaling mediated inflammation affects frontal and limbic regions of the brain, which may contribute to the fatigue and sleep symptoms of the disease and suggest a strong neuroinflammatory component to GWI. These results also suggest exposures to chemical weapons and mTBI during the war are associated with different patterns of peripheral and central inflammation and highlight the brain regions vulnerable to further subtle microscale morphological changes and chronic signaling to nearby glia.

1. Introduction

About a third of the nearly 700,000 U.S. troops who served in the

Gulf War (GW) suffer from a complex, often debilitating symptomatic illness known as Gulf War Illness (GWI) (White et al., 2016). Symptoms of GWI typically include fatigue, chronic pain, memory and attention

* Corresponding authors.

E-mail address: bbkoo@bu.edu (B.-B. Koo).

¹ co-1st authors.

<https://doi.org/10.1016/j.bbi.2020.07.006>

Received 6 March 2020; Received in revised form 11 June 2020; Accepted 8 July 2020

0889-1591/© 2020 Elsevier Inc. All rights reserved.

problems, headaches, gastrointestinal and respiratory symptoms which encompass the six symptom domains of the National Academy of Sciences recommended Kansas GWI criteria (Steele, 2000; National Academics of Sciences, Engineering, and Medicine, 2016). GWI has been associated with altered central nervous system (CNS) functioning (White et al., 2016). Chronic GWI symptoms are thought to develop as a result of a heightened innate immune response in the CNS to multiple exposures during the war including stress, neurotoxicant chemicals (organophosphate pesticides and nerve agents) and to other CNS insults, such as mild traumatic brain injury (mTBI) (Gade and Wenger, 2011; O'Callaghan et al., 2015; Rathbone et al., 2015; Yee et al., 2016; Yee et al., 2017; Janulewicz et al., 2018). mTBI as defined by the American Academy of Neurology has proven to be the most sensitive measure of mTBI in prior GWI research (Vynorius et al., 2016; Yee et al., 2016; Yee et al., 2017; Janulewicz et al., 2018). As such, the persisting symptoms of GWI have been hypothesized to coincide with a heightened, chronic neuroinflammatory reaction observed in animal models while increased blood levels of proinflammatory cytokines in veterans with GWI has also been reported (Whistler et al., 2009; O'Donovan et al., 2015; O'Callaghan et al., 2015; Khaiboullina et al., 2014; Parkitny et al., 2015; Locker et al., 2017; Koo et al., 2018; Miller et al., 2018; Janulewicz et al., 2019). However, we are not aware of any publications to date examining microstructural integrity and neuroinflammatory responses by utilizing brain imaging techniques to focus on mTBI and organophosphate (OP) exposure in GWI veterans.

Exposure to neurotoxicants including OP pesticides and sarin nerve agents has been a unique risk factor associated with GWI (Golomb, 2008; White et al., 2016; Sullivan et al., 2017). In animal models, exposure to OP nerve agents and pesticides, such as sarin and its surrogate diisopropyl fluorophosphate (DFP) and chlorpyrifos, was shown to produce neuroinflammation as indicated by increased proinflammatory cytokine signaling in the brain (Spradling et al., 2011; O'Callaghan et al., 2015; Locker et al., 2017). Neuroinflammatory cytokines were further associated with microstructural changes in the brain in the OP-exposed animal model of GWI indicating potential damage associated signaling and activation of proinflammatory cytokine release from nearby glia (Banks and Lein 2012; Koo et al., 2018).

These microstructural changes need not reflect neuronal damage or apoptosis but could rather reflect more subtle microscale morphological changes including dendritic or glial cell arborization (Spradling et al., 2011; Koo et al., 2018). In humans, brain morphometric analysis based on T1 weighted magnetic resonance imaging (MRI) scans of GW veterans exposed to the chemical weapon sarin showed overall reductions in grey matter (GM) and selective reductions in hippocampal subfield volumes when compared with unexposed veterans (Chao et al., 2011, 2015). In the white matter (WM), an overall reduction in tissue volume was observed in a dose–response manner in GW veterans with air plume-modeled exposure to sarin (Heaton et al., 2007). These WM volumetric changes in sarin exposed veterans have also been validated in other cohorts and correlated with cognitive outcomes (Proctor et al., 2006; Chao et al., 2010). More recently, two investigations using diffusion tensor imaging (DTI) have reported altered brain connectivity which correlated with fatigue, pain, or hyperalgesia in GW veterans with sarin exposure and in those with GWI (Rayhan et al., 2013; Chao et al., 2015). In both studies, enhanced axial diffusivity in the major WM tract pathways was suggested as a potential biomarker for GWI and was associated with more severe health symptom reporting (Rayhan et al., 2013; Chao et al., 2015). These findings indicate a structure–function relationship between WM changes and chronic health symptoms in GW veterans that may be related to chronic microglial activation and neuroinflammatory cytokine signaling from damaged neural cells including more subtle neurite microstructural alterations signaling to nearby glia (O'Callaghan et al., 2015; Banks and Lein, 2012; Rathbone et al., 2015).

Mild traumatic brain injury (mTBI) is another factor that can produce a secondary neuroinflammatory response post-injury (Kumar and

Loane; 2012, Rathbone et al., 2015). mTBI is the most common type of traumatic brain injury affecting military personnel. More than 15 percent of returning members experienced mTBI (Hoge et al., 2008) and it has recently been shown to be highly prevalent (~30%) in the large, longitudinally-followed Ft. Devens cohort of GW veterans and in the Boston Gulf War Illness Consortium (GWIC) cohort of GW veterans (Hoge et al., 2008; Yee et al., 2016; Janulewicz et al., 2018). Increasing evidence suggests that a single mTBI may produce long-term progressive damage in GM and WM, and accelerate age-related neurodegeneration and neuroinflammatory signaling (Bramlett and Dietrich, 2002; Smith et al., 2013; Rathbone et al., 2015; Chao, 2018). In addition, it has recently been shown that GW veterans with a mTBI history alone or in addition to sarin chemical weapons (CBW) exposure during the war are more likely to report persistent and debilitating chronic health symptoms and medical conditions suggesting that multiple mTBIs or a single mTBI and chemical weapons exposure act as multiple-hits to the neuroimmune system that primes stronger and longer neuroinflammatory signaling in those exposed (Yee et al., 2017; Janulewicz et al., 2018; O'Callaghan and Miller 2019). However, brain imaging outcomes in GW veterans with mTBI and with chemical weapons exposures during the war and their effect on microscale morphological changes including dendritic or glial cell arborization and neuroinflammatory signaling have yet to be reported.

We have previously demonstrated that high-order diffusion MRI showed a sensitivity to discriminate different stages of neuroinflammatory signaling in our established, OP exposed GWI animal model utilizing combined exposure to exogenous corticosterone at levels mimicking high physiological stress and the sarin surrogate, DFP (Koo et al., 2018). When combined with findings from other similar animal model studies, results suggest a strong brain-immune component to GWI that could be measured through brain imaging and peripheral blood immune markers and validated in GW veteran cohorts (O'Callaghan et al., 2015, Spradling et al., 2011).

Neurite density imaging (NDI, Zhang et al., 2012) and Q-space imaging (Yeh et al., 2010) are two novel diffusion processing methods of the high-order diffusion MRI measures that have been shown to successfully detect local microscale diffusivity of axon and dendrite processes in animals and human studies of neurological disorders (Colgan et al., 2016, Zhang et al., 2012, Koo et al., 2018, McCunn et al., 2019). NDI compartmentalizes the brain environment into three components to sample microstructural diffusivity, and restricted diffusion imaging measure (RDI) in Q-space imaging method provides diffusion displacement in the three-dimensional space that could provide similar diffusion information of NDI by analyzing different boundaries in the three-dimensional space (Zhang et al., 2012; Yeh et al., 2010, 2017). Both NDI and RDI can provide detailed description of microscale diffusivity of brain tissues and nearby free water space without applying predefined linear diffusion models as seen in conventional DTI approaches (Tuch, 2004; Zhang et al., 2012). Decomposing slow diffusion components with links to subneuronal, glial or extracellular compartments may give detailed insights on pathophysiologic profile of disease.

In this study, we investigate whether an NDI processing model of high-order diffusion MRI can successfully identify and validate the different levels of microstructural and macrostructural brain alterations previously seen in animal models of GWI by utilizing RDI (Koo et al., 2018) and assessing how these patterns overlap in veterans with GWI from the Boston Gulf War Illness Consortium. We also assessed the relationship between brain imaging measures, blood neuroinflammatory markers, and self-reported health symptoms in veterans with GWI and GW control veterans. Lastly, we compared the separate and combined effects of mTBI and chemical weapons exposure on high-order microstructural diffusion MRI, blood neuroinflammatory markers, and health symptom outcomes.

2. Materials and methods

2.1. Participants

The study population included 91 GW veterans from the Boston University Gulf War Illness Consortium (GWIC). The GWIC is a multi-site study that includes a series of preclinical and clinical studies designed to understand the pathobiological mechanisms responsible for the chronic symptoms of GWI and to identify diagnostic markers and targeted treatments for the disorder. GWIC inclusion criteria required deployment to the Persian Gulf between August 1990 and July 1991. GWIC exclusion criteria included diagnoses of chronic medical illnesses that could otherwise account for the symptoms experienced by GW veterans. These diagnoses included autoimmune, central nervous system, or major psychiatric disorders that could affect brain and immune functions (e.g., epilepsy, stroke, severe head injury, brain tumor, multiple sclerosis, Parkinson's disease, Alzheimer's disease, schizophrenia, bipolar disorder, and autoimmune disorders). Each of the study participants completed an assessment protocol including health surveys, a neuropsychological test battery, brain imaging, and collection of blood and saliva samples (Janulewicz et al., 2018). All participants provided written informed consent to participate in the study. This study was reviewed and approved by the Boston University institutional review board.

2.1.1. Gulf war illness criteria

GWIC case status was defined from the Kansas GWI case definition (Steele, 2000). The Kansas GWI case definition requires GWI cases to endorse multiple or moderate-to-severe chronic symptoms in at least three of six statistically-defined symptom domains: fatigue/sleep problems, somatic pain, neurological cognitive/mood symptoms, gastrointestinal symptoms, respiratory symptoms and skin abnormalities (Steele, 2000). GWIC participants not meeting Kansas GWI or exclusionary criteria were considered controls. Veterans were excluded from being considered GWI cases, for purposes of the research study, if they reported being diagnosed by a physician with medical or psychiatric conditions that would account for their symptoms or interfere with their ability to report their symptoms.

2.1.2. Self-Reported mild traumatic brain injury (mTBI)

To determine mTBI status, participants were given a concussion definition that follows the current guidelines from the American Academy of Neurology and was used in our prior GW veteran mTBI publications (Vynorius et al., 2016; Robbins et al., 2014; Seichepine et al., 2013; Janulewicz et al., 2018; Yee et al., 2016; Yee et al., 2017). Participants were provided with the mTBI definition and examples of common symptoms associated with mTBI and were then asked to report if they had experienced mTBI during their deployment, they were also asked to self-report how many mTBIs they had experienced during the war.

2.1.3. Chemical/Biological weapon (CBW) exposure

GWIC subjects were administered the Kansas Gulf War Experiences and Exposure Questionnaire, and the Structured Neurotoxicant Assessment Checklist (SNAC) to assess for deployment-related exposures (Proctor et al., 1998; Steele 2000; Proctor et al., 2006). Self-reported exposures to chemical or biological weapons (CBWs) were obtained from the SNAC by asking the veterans whether or not they were exposed to CBWs during military service (Proctor et al., 1998).

2.1.4. Demographics and health symptom surveys

GWIC subjects were also administered a general demographic information and medical conditions questionnaire and the Kansas Gulf War and Health Questionnaire (Proctor et al., 1998; Steele 2000). Additional validated health symptom surveys were completed by study participants and included the Multidimensional Fatigue Inventory

(MFI-20), McGill Pain Inventory and the Pittsburgh Sleep Quality Index (PSQI) where higher scores indicated more symptoms (Buysse et al., 1989; Smets et al., 1995; Melzack, 1975).

2.1.5. Cytokines

EDTA plasma was separated and stored at -80°C until assayed. Cytokines were measured with an 18-multiplex chemiluminescent assay using Quansys Q-view Imager LS 1.3 and reagents in methods previously reported (Fletcher et al., 2009). Each 18-multiplex plate was imaged at 500 sec, 270 sec, 180 sec, 120 sec. Following the manufacture's protocol, the 270-sec images were used for further analysis. All plates were normalized by using an internal plasma control (pooled plasma from 50 men and 50 women). This internal control (IC) was run on each plate, average pg/ml was calculated for IC across plates and each plate normalized to the percent change from IC average. This normalization removes variability between plates. In instances when the cytokine expression was below the level of detection (BLD), the difference between the lower limit of detection and 0 was used. To determine if circulating proinflammatory cytokines levels were different between GWI cases and controls, plasma samples were examined by symptom group. In this study, chemiluminescent imaging concentrations of three cytokines in plasma samples were examined and compared to the brain imaging measures. Cytokines of interest were Interleukin 1 alpha (IL1 α), Tumor necrosis factor receptor type I (TNFRI) and Tumor necrosis factor receptor type II (TNFRII) based on previously demonstrated relationships between GWI and blood cytokine measures (Jaundoo et al., 2018; O'Callaghan et al., 2015; Khaiboullina et al., 2014; Broderick et al., 2011).

2.2. Image acquisition

All MRI scans were performed on an Achieva 3 T whole-body MRI scanner (Philips Healthcare, Best, The Netherlands) in the center of biomedical imaging, Boston university school of medicine.

2.2.1. T1 MPRAGE Acquisition: The Alzheimer's disease neuroimaging initiative (ADNI)

developed an MPRAGE sequence that was used for this study (TR = 6.8 msec, TE = 3.1 msec, flip angle = 9° , slice thickness = 1.2 mm, 170 slices, FOV = 250 mm, matrix = 256×256). We used the MPRAGE scan to generate the anatomical regions of interest (ROI) for assessing morphometric differences between the groups and also to provide anatomical co-registration with the DTI and fMRI data sets.

2.2.2. Diffusion MRI: The diffusion MRI data were obtained using a single-shot EPI sequence

with multi-shell diffusion encoding (b-value used = 1000, 2000, and 3000 s/mm 2). We used 124 gradient directions utilizing parallel imaging on a 16-channel parallel head coil (70 slices, TR = 13214 msec, TE = 55 msec, with a matrix size of 128×128 yielding a resolution of $2.0 \times 2.0 \times 2.0$ mm 3 , no slice gap). In

addition to distortion corrections built into the scanner, we also collected 6 B0 field maps for further distortion correction.

2.3. Image processing and anatomical defining

2.3.1. Defining GM anatomy

Defining anatomical structures in the cortex was the first step in analyzing brain images. MPRAGE structural scans were analyzed using FreeSurfer (Fischl, 2012) to obtain measures of volume, cortical thickness and surface geometry for each anatomical ROIs implemented in the brain atlas (Desikan et al., 2006). Seventy-eight ROIs defined in the average template space were co-registered to each subject's cortical surface by applying nonlinear coregistration parameters. The results were visually inspected for artifacts or incomplete segmentation. A total

of seventy-eight cortical and subcortical ROIs were chosen for the analysis.

2.3.2. Defining WM anatomy

Diffusion MRI was registered to the structural MRI following the motion and eddy current distortion correction (Jenkinson et al., 2012). TRACULA (TRActs Constrained by UnderLying Anatomy) software was used to perform tract-based analysis on the preprocessed diffusion MRI data (Yendiki et al., 2011). Eighteen major white matter tracts were reconstructed for each subject.

2.4. High-order diffusion processing

To reconstruct microstructural information from high-order diffusion MRI, Neurite Density Imaging (NDI) processing was performed on merged high-order diffusion MRI images containing 3 different b-value encodings (Zhang et al., 2012). NDI applies a two-level approach by separating the volume fraction of Gaussian isotropic diffusion, representing the cerebrospinal fluid (CSF) water component. Then, the remaining diffusion signal is sub-compartmentalized into components from intra and extra-neurite water (Zhang et al., 2012). This modeling procedure provides a neurite density (ND) index, a fraction of tissue composed of axons or dendrites, and the fraction of tissue other than neurites. Orientation dispersion (OD) index provides the spatial configuration of the neurite structures based on the composite pattern of intra and extracellular diffusivity. Both ND and OD measures in each voxel were merged into 18 WM major tracts to extract tract-wise measures. For the GM and subcortical GM diffusivity assessment, diffusion modeling parameters were determined by iterative parameter selection methods based on the maximum likelihood estimation of modeling fitting error. These three different measures from this step were then merged into the 78 GM ROIs to extract ROI-wise NDI measures.

2.5. Statistical analysis

Group differences on ROI levels between GW veteran controls (GW Cont) and veterans with GWI (GWI Case) were assessed by generalized linear regression models controlling potential confounding variables such as age and gender (Gur et al., 1991). Significant p-values ($p < 0.05$) were first calculated through nonparametric permutation tests with 10,000 permutations (Winkler et al., 2014), then we applied the Benjamini & Hochberg procedure to control the false discovery rate (FDR) (Benjamini and Hochberg, 1995; Groppe et al., 2014). Significant p-values after permutations (p) or FDR adjustment (FDR_adj_p) in the whole GM and WM group comparisons were reported along with t -values.

Partial correlations controlling for age and gender were applied on: (1) Multidimensional Fatigue Inventory scale (MFI) and GM NDI data; (2) Pittsburgh Sleep Quality Index (PSQI) sleep score and GM NDI data; (3) plasma blood cytokine data and GM NDI data. Both whole group and subgroup level analyses were assessed in this study. Significant p-values after permutations (p) or FDR adjustment (FDR_adj_p) in the whole group and subgroup levels were reported along with the Pearson correlation coefficients (ρ). For subgroups analyses with small sample sizes, we included 95% confidence intervals (95% CI)

3. Results

3.1. Demographic results

The first 91 GWIC veterans with brain imaging completed were the participants in this study. 75 GW veterans met Kansas criteria for GWI (GWI Cases) and 16 GW veterans did not meet Kansas GWI criteria and were considered GW veteran controls (GW Controls). Veterans with GWI were further divided into subgroups based on self-reported

Table 1

Demographic and self-reported exposure to risk factors information for GWI case and control subjects.

	GW Control	GWI Case
N	16	75
Age (years)	53.85	52.07
Gender (F/M)	1/15	16/59
Exposure to risk factors during war (% exposed)		
Mild traumatic brain injury (mTBI)	0%	30.67%
Chemical/Biological warfare agents (CBW)	12.50%	44%
mTBI + Chem/Bio warfare agents (mTBI + CBW)	0%	16%

exposures to chemical weapons (CBW) or mTBI during their deployment. Those exposed to mTBI during deployment (GWI + mTBI; $n = 23$), CBW agents (GWI + CBW; $n = 33$) or both exposures (GWI + mTBI + CBW; $n = 12$) (Table 1).

3.2. GWI decreases NDI measures in both WM and GM regions

Whole group analysis in both WM and GM imaging measures indicated significant differences between GWI cases and controls, with p -values < 0.05 after FDR correction (Fig. 1, Sup.1, Sup.2).

Compared to controls, significantly decreased patterns in GWI cases were seen in ND for all major WM tracts. Both ND and OD showed decreased patterns for most GM ROIs. The highest significant group differences between GWI cases and controls were seen in the left cingulum angular bundle (cab, $t = -2.963$, FDR_adj_p = 0.027), the bilateral uncinate fasciculus (unc, $t = -2.749$, FDR_adj_p = 0.026 (left), $t = -2.941$, FDR_adj_p = 0.026 (right)), the bilateral rostral anterior cingulate ($t = -3.272$, FDR_adj_p = 0.026 (left), $t = -2.882$, FDR_adj_p = 0.026 (right)), and the bilateral fusiform gyrus ($t = -3.006$, FDR_adj_p = 0.026 (left), $t = -2.909$, FDR_adj_p = 0.026 (right)) (Fig. 1, Sup.1, Sup.2).

3.3. GWI subgroups have distinct patterns of behavioral symptoms and brain changes

Specific risk factors were selected to define subgroups for correlation analysis to self-reported health symptom measures. GM ND and self-reported symptom scores within mTBI, CBW and mTBI + CBW subgroups showed an overall negative relationship, but highlighted specific regions in each subgroup (Fig. 2, Sup. 3, Sup. 4). There were more localized patterns in GWI + mTBI ND and OD measures, with the most significant results seen in the left pars orbitalis for the MFI score ($\rho = -0.706$, FDR_adj_p = 0.027, 95% CI = $[-0.859, -0.389]$) and the left lingual gyrus for the PSQI score ($\rho = -0.709$, FDR_adj_p = 0.036, 95% CI = $[-0.860, 0.374]$) (Fig. 2, Sup. 3, Sup. 4). Conversely, the GWI + CBW subgroup has more widespread and bilateral patterns for both ND and OD, some of the most significant results seen in the bilateral rostral anterior cingulate for the MFI score ($\rho = -0.655$, FDR_adj_p = 0.002, 95% CI = $[-0.803, -0.373]$ (left), $\rho = -0.605$, FDR_adj_p = 0.002, 95% CI = $[-0.771, -0.297]$ (right)) and the bilateral caudal anterior cingulate for the PSQI score ($\rho = -0.520$, FDR_adj_p = 0.038, 95% CI = $[-0.688, -0.129]$ (left), $\rho = -0.493$, FDR_adj_p = 0.038, 95% CI = $[-0.779, -0.316]$ (right)) (Fig. 2, Sup. 3, Sup. 4). The GWI + mTBI + CBW group showed enhanced patterns in restricted regions found in the single risk factor subgroup analysis, with the most significant results seen in the bilateral caudal middle frontal gyrus ($\rho = -0.804$, FDR_adj_p = 0.036, 95% CI = $[-0.949, 0.476]$ (left), $\rho = -0.808$, FDR_adj_p = 0.036, 95% CI = $[-0.951, 0.491]$ (right)) for the MFI score and the right parahippocampal gyrus for the PSQI score ($\rho = -0.698$, $p = 0.036$, 95% CI = $[-0.919, -0.194]$) (Fig. 2, Sup. 3, Sup. 4).

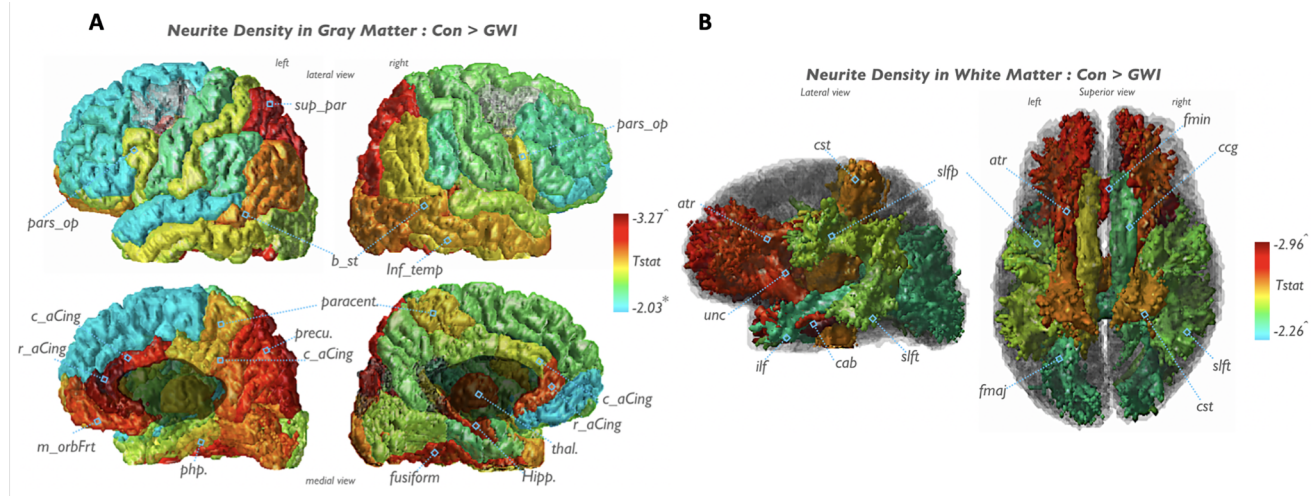


Fig. 1. ND feature mapping of whole group WM and GM analyses highlights group effects in widespread regions, most significantly seen in frontal white matter tracts and subcortical limbic regions. Fmaj = corpus callosum forceps major, fmin = corpus callosum forceps minor, atr = anterior thalamic radiations, cab = cingulum-angular bundle, ccg = cingulate gyrus bundle, cst = corticospinal tract, ifl = inferior longitudinal fasciculus, sflp = superior longitudinal fasciculus parietal, slft = superior longitudinal fasciculus temporal, unc = uncinate fasciculus, pars_op = pars opercularis, sup_par = superior parietal, b_st = banks of superior temporal sulcus, inf_temp = inferior temporal, c_aCing = caudal anterior cingulate, r_aCing = rostral anterior cingulate, m_orbFrt = medial orbitofrontal, php = parahippocampal, hipp = hippocampus, thal = thalamus proper, precu = precuneus, paracent = paracentral. * $p < 0.05$, $FDR_{adj.p} < 0.05$.

3.4. Peripheral immune markers are associated with decreased NDI measures

Plasma cytokine markers showed negative relationships with NDI measures within the subgroups (Fig. 3, Sup. 5, Sup. 6, Sup. 7). Specifically, in the GWI + mTBI group, TNFRI and TNFRII showed significant negative correlations with the left entorhinal cortex (TNF RI: $\rho = -0.439$, $p = 0.041$, 95% CI = $[-0.707, -0.006]$; TNF RII: $\rho = -0.523$, $p = 0.015$, 95% CI = $[-0.758, -0.115]$) and the left parahippocampal gyrus (TNF RII: $\rho = -0.461$, $p = 0.036$, 95% CI = $[-0.735, -0.063]$) regions (Sup. 5, Sup. 7). Additionally, partial correlation analysis of IL1A revealed the most significant relationship with the left middle temporal gyrus ($\rho = -0.567$, $p = 0.008$, 95% CI = $[-0.804, -0.229]$) (Sup. 5, Sup. 7). In the GWI + CBW group, TNFRII had significant negative correlations with many bilateral cortices including the entorhinal, cingulate, parahippocampal, thalamus, occipital and temporal regions. The bilateral entorhinal cortices had the most significant negative correlation to TNFRII ($\rho = -0.525$, $p = 0.002$, 95% CI = $[-0.721, -0.192]$ (left), $\rho = -0.418$, $p = 0.017$, 95% CI = $[-0.669, -0.093]$ (right)) (Fig. 3, Sup. 5, Sup. 6).

4. Discussion

This study showed that the NDI model of high-order diffusion MRI processing detected detailed microstructural alterations in WM tracts and GM ROIs in veterans with GWI, which validated results from our previous work utilizing the GWI rat model where neuroinflammation, as measured by increased brain cytokine signaling, was correlated with high-order diffusion MRI in toxicant-exposed animals (Koo et al., 2018). Our major findings are 1) Veterans with GWI showed widespread microstructural changes compared to control veterans in both ND and OD measures, with the most pronounced differences in the frontal white matter tracts and the limbic/paralimbic cortical regions, 2) Veterans with more pronounced brain changes reported higher rates of exposure to mTBI and CBW during their deployment, 3) Veterans with CBW exposure showed widespread microstructural brain changes while those with mTBI showed more focal microstructural changes on high-order diffusion MRI. 4) Behavioral symptoms were associated with distinct brain changes across the GWI exposure subgroups, and 5) Peripheral

immune cytokine markers correlated with increased fatigue and sleep symptoms and with brain NDI measures in veterans with GWI indicating structure-function relationships between brain imaging, inflammatory markers, and behavioral outcomes.

The tissue water diffusion information captured in diffusion MRI can be potentially sensitive to many factors including axons, dendrites as well as myelinated fibers, changes in the neuroglial cells may also be a potential factor for differential patterns in water diffusivity (Gulani et al., 2001; Naughton et al., 2018; Belgrad et al., 2019). Water diffusivity may differ from either loss of existing neurons or reproduced neurons (neurogenesis) in the tissue medium. Also, changes in morphology in neuroglial cells take place during different stages of activation thereby resulting in differential patterns of water diffusivity in the brain (Raivich et al., 1999). Considering all these components, variations in the tissue environment might be expressed in a mixture of diverse diffusion strengths. A significant loss in cell populations can impact fast (i.e., macroscopic) water diffusion components since there will be less barriers for restricting water diffusion in the cell medium (Johnson et al., 2014). On the other hand, changes in sub-neuronal components, such as synaptogenesis or glial activation, can increase complexity in the medium and thereby change distinct diffusion components compared to the neuronal loss (Zhuo et al., 2012). While DTI measures could provide overall information of microstructural tissue changes in the brain, common markers of DTI, mean diffusivity (MD) and fractional anisotropy (FA), take in account of changes in all tissue components, hence novel approaches such as NDI and RDI could provide more specific information on the aforementioned changes in different tissue components as well as fiber orientation estimation (Tuch, 2004; Zhang et al., 2012).

OP nerve agents induce neuroinflammatory responses in cortical structures including limbic and paralimbic structures (Spradling et al., 2011; Rao et al., 2017; Naughton et al., 2018). Such neuroinflammatory responses might result from neurological damage as a result of neurotoxicant exposure and damage signaling to innate immune cells (Milligan and Watkins, 2009). However, the level of damage might also show mild long-lasting changes in sub-neuronal components and morphology of neurite cells including axons and dendrites rather than the remarkable loss of neurons (Spradling et al., 2011; O'Callaghan et al., 2015). The lower range of diffusion encodings used in diffusion MRI (typically, around $b = 1000$ s/mm²) is the most common protocol in

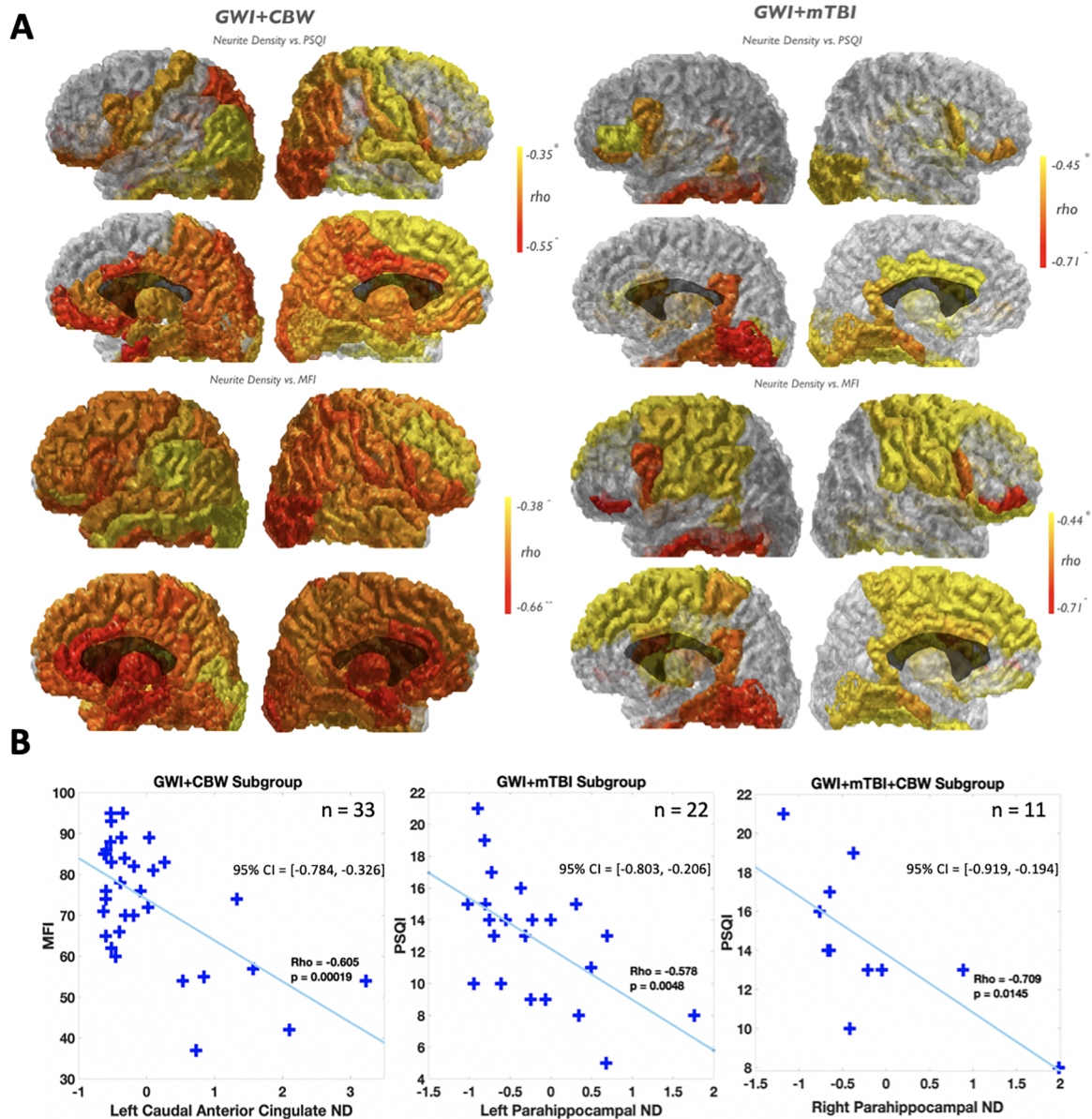


Fig. 2. Self-reported symptoms correlation mapping in GWI subjects exposed to chemical or biological warfare agents or mTBI. Regions with significant correlation between ND and PSQI (A, left upper) or MFI (A, left lower) in GW veterans with chemical/biological warfare agent exposures are rendered based on significance levels. Regions with significant correlation between ND and PSQI (A, right upper) or MFI (A, right lower) in GW veterans with mTBI exposure are rendered based on significance levels. Panel B shows data distribution patterns of ND and PSQI (B, middle and right) or MFI (B, left) scores in representative regions within each subgroup. Some subjects did not have available PSQI data, therefore, the number of subjects (n) used for subgroup correlation is indicated in the figure and 95% CIs are provided. * $p < 0.05$, ^ $FDR_{adj} p < 0.05$, ^ $FDR_{adj} p < 0.01$.

clinical imaging. Under this protocol, diffusion MRI has been a powerful tool for assessing WM major pathways, edema, or brain tumors. However, it does not have enough sensitivity to assess the mild progressive damage in the sub-neuronal components since the sub-neuronal component alterations including axonal microtubule density and stability changes, myelin depletion and oligodendrocyte function and arborization of dendrites or glial process morphometry changes might induce changes in variant forms of microscopic water diffusivities (Rao et al., 2017; Naughton et al., 2018; Belgrad et al., 2019). In our previous study on GWI animal model brain imaging, we confirmed neurotoxicant-induced neuroinflammatory response accompanies micro-scale changes in the neuronal cell environment that significantly correlated with proinflammatory cytokine signaling (Koo et al., 2018). These results also highlight the ability to detect inflammatory-induced changes in microstructural diffusion imaging. The results from our

previous work were the rationale for studying separate diffusion components on brain imaging in GW veterans with various exposures and peripheral cytokine markers.

Based on the high-order diffusion MRI, we have confirmed that the NDI successfully and significantly differentiated between veterans with and without GWI. While NDI measures revealed overall and widespread pattern differences between groups, the clearest distinctive pattern was confirmed in the limbic/paralimbic structures along with the anterior WM connections. However, little significant differences were observed in DTI measures in major WM tracts (Sup. 11). In addition to WM, GM diffusion mapping provided a clear explanation of the relationship between microstructural damage and illness symptoms. Considering the cytoarchitectural profiles of the cortical structures, GM measures from high-order diffusion MRI may reflect distinct patterns of microstructural damage across regions. As previously discussed (Glasser

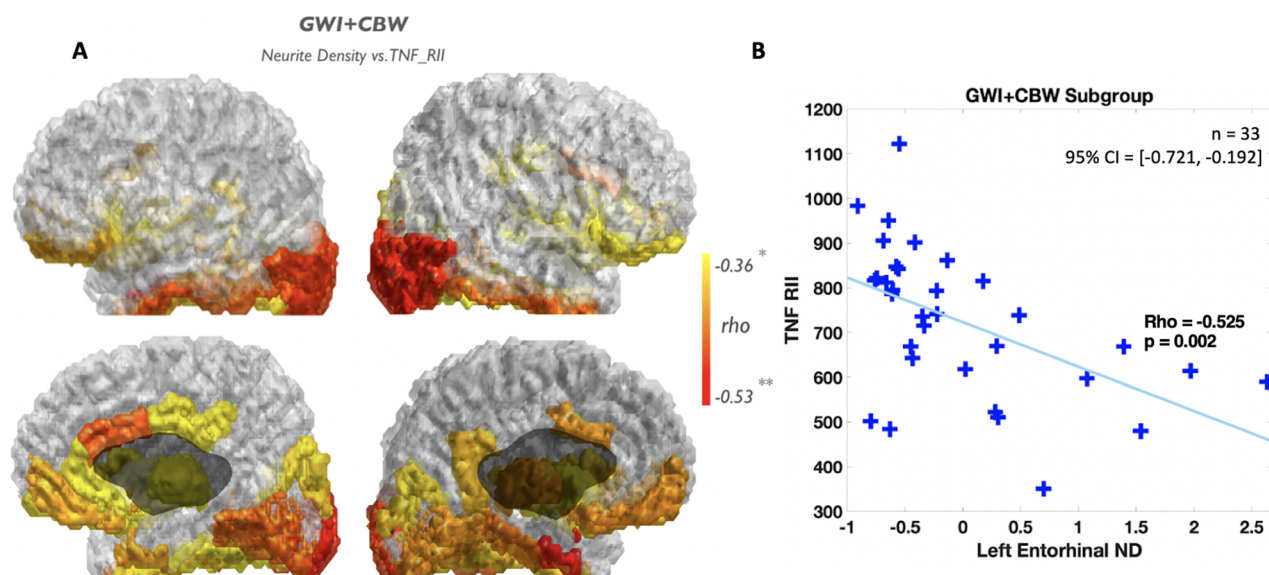


Fig. 3. Blood cytokine correlation mapping in GWI subjects exposed to chemical and biological warfare agents. Regions with significant correlation between ND and TNF_RII (A) are rendered based on significance levels. Panel B shows data distribution patterns of ND and TNF_RII levels in the representative region within the GWI + CBW subgroup. * $p < 0.05$, ** $p < 0.01$.

et al., 2014), neuronal density in brain regions co-varies with myelinated axons. While NDI could be sensitive to myelinated axons (Fukutomi et al., 2018; Grussu et al., 2017), lowered ND in both medial prefrontal regions and anterior WM tracts may reflect damage in myelinated axons. However, other regions had more dominant changes in GM than in the WM. The cingulate cortex and parahippocampal area have relatively thick cortical layers and unmyelinated fibers. These regions may account for different neurological sources for NDI mapping. Similar to what we have confirmed from the animal model of GWI using RDI measure (Koo et al., 2018), we have found a strong link between NDI measures and RDI measure on the GW human data used in this study, suggesting NDI profiles may also account for neuroinflammatory responses in the brain (Sup. 11). Indeed, some of our NDI mappings, such as the precuneus and the anterior cingulate cortex, have overlapped patterns to those of a recent GWI study using the translocator protein (TSPO) based positron emission tomography imaging (Alshelhi et al., 2020). This may indicate that NDI contrasts can be affected by activated glial cell populations in local brain regions.

Multiple risk factors have been investigated in search of the underlying causes of GWI symptoms, suggesting a neuroinflammatory etiology due to individual or multiple neurotoxicant exposures during deployment (White et al., 2016; Abou-donia et al., 2017; Sullivan et al., 2017). Recent studies have identified mTBI to play a significant role in increased rates of health-related symptoms (Yee et al., 2016; Yee et al., 2017; Chao, 2018; Janulewicz et al., 2018) in GW veterans whereas OP chemical warfare agents were critical risk factors to GWI symptoms specifically (Chao et al., 2010, 2011, 2015). Besides, high-order diffusion MRI has previously been shown to detect microstructural changes in a rat model of mTBI (Zhuo et al., 2012). As a result, we focused on GWI cases with either one or both of those risk factors as separate subgroups for further analysis and to recapitulate existing results. In this study, mTBI groups showed more focal diffusion changes while the CBW exposed group showed more widespread diffusion changes in the WM tracts and the GW ROIs. Similar to what we confirmed with GWI animal models, this may indicate that microscale changes in the neuronal cell environment can be a potential biomarker for explaining illness symptoms in GWI and groups with specific brain insults (physical and chemical) during the war (Koo et al., 2018). However, further testing in a large scale sample is needed to draw integrative and generalizable conclusions.

4.1. Behavioral symptoms and associated brain changes

Due to the complex, multi-symptomatic etiology of GWI, various clinical and self-reported symptom measures were used in our correlation analysis to investigate the relationship between imaging results and symptom severity. Overall, subjects with more depleted ND and OD reported worse sleep quality on PSQI and higher fatigue levels on the MFI indicating objective markers for subjective symptom complaints. We observed the most significant correlation between imaging data and MFI scores indicated a strong CNS component to fatigue in GWI. Fatigue symptoms showed strong associations with decreased parahippocampal measures, which is consistent with previous studies on GM volumes in other disorders including chronic fatigue syndrome (Puri et al., 2012; Tang et al., 2015; Kimura et al., 2019). Limbic and nearby related paralimbic areas had the most altered GM integrity and also displayed the most significant negative relationships among all regions in addition to the particular regions responsible for each symptom.

4.2. TNF mediated inflammation

Proinflammatory cytokine levels in the blood could be used as markers to indirectly analyze CNS innate immune responses after exposures or experiences to noxious external stimuli, which in GWI studies were often chemical warfare agents and exposures to similar classes of chemicals (Michalovicz et al., 2019). Exposure to neurotoxins such as sarin, PB, pesticides, and other chemical warfare agents has been identified to pose negative health effects in GW veterans in cohort studies (Chao et al., 2010, 2011, 2015; Sullivan et al., 2003; Sullivan et al., 2017; Zundel et al., 2019) and controlled animal studies (Abdullah et al., 2011). Indeed, the GWI + CBW group displayed significantly upregulated TNF RI and TNF RII along with decreased ND in frontal and subcortical limbic regions, similar regions highlighted with symptom-specific domains. The main ligand for both TNF RI and TNF RII, TNF α is a potent inflammatory cytokine released by macrophages triggering numerous events including apoptosis, edema, and leukocyte adhesion (Zelová and Hošek, 2013). Receptor shedding has been proposed as a mechanism to counteract high levels of TNF α to balance inflammatory responses (Xanthoulea et al., 2004; Hawari et al., 2004). Previous studies have shown TNF α to be a significant biomarker for

GWI (Broderick et al., 2011; Khaiboullina et al., 2014; O’Callaghan et al., 2015; Jaundoo et al., 2018). However, unlike what we confirmed from TNF RI and RII, we did not see significant patterns in TNF α in this study. The discrepancy between these measures should be determined in further studies to clarify the role of the TNF pathway in mediating inflammation, which may contribute to the fatigue and sleep symptoms of the disease.

5. Conclusion

Our study provides neuroimaging evidence underlying GWI etiologies and reveals GWI-specific microstructural changes in the frontal and subcortical paralimbic regions due to mTBI and chemical weapons exposures. We showed for the first time in GW veterans that mTBI was associated with discrete focal microstructural changes on MRI and that chemical weapons exposures resulted in more diffuse and widespread microstructural changes on brain imaging. In addition, these microstructural brain changes correlated with peripheral neuroinflammatory markers in the blood of veterans with GWI. When these results are combined with our prior studies showing correlations with brain cytokines and microstructural changes in the GWI animal model, this provides compelling evidence for neuroinflammation in the pathobiology of GWI. This is especially the case given that the NDI microstructural brain changes also negatively correlated with the self-reported markers of fatigue and sleep on the MFI and PSQI which suggests functional consequences from these structural changes and also validates their use as objective measures and validating NDI imaging as a potential marker of treatment trial efficacy pre- and post-treatment for GWI symptoms. Correspondingly, current GWI literature on microstructural alterations due to neuroinflammation in the limbic areas have indicated changes in memory and emotion-related functions as evidenced by psychological and health outcome correlational studies (Toomey et al., 2009; Chao et al., 2010; Abdullah et al., 2011; Chao et al., 2011; Sullivan et al., 2003; Janulewicz et al., 2018; Sullivan et al., 2017; Jeffrey et al., 2019). However, there are several limitations to human studies, which can be overcome with concurrent controlled animal experiments as we have done in our ongoing GWIC studies (O’Callaghan et al., 2015; Koo et al., 2018). Further studies are needed to elucidate which neuronal and glial changes are contributing to diffusion imaging results seen here and how microstructural alterations may lead to higher risks of accelerated aging and earlier risks for neurodegenerative and cerebrovascular diseases in GW veterans so that intervention strategies can be implemented (Barnes et al., 2018; Smith et al., 2013; Zundel et al., 2019).

Acknowledgements

Ms. Cheng and Dr. Koo contributed equally to this work as the 1st author. Drs. Koo and Sullivan are the corresponding authors. This work is supported by a department of Defense CDMRP new investigator award (W81XWH-17-1-0440) and CDMRP GWI consortium award (W81XWH-13-2-0072).

Disclaimer

The findings and conclusions in this report are those of the author(s) and do not necessarily represent the official position of the National Institute for Occupational Safety and Health, Centers for Disease Control and Prevention. This work was supported by the Assistant Secretary of Defense for Health Affairs, through the Gulf War Illness Research Program, GW160032 and GW120037. Opinions, interpretations, conclusions and recommendations are those of the author and are not necessarily endorsed by the Department of Defense.

Appendix A. Supplementary data

Supplementary data to this article can be found online at <https://doi.org/10.1016/j.bbi.2020.07.006>.

References

- Abdullah, L., Crynen, G., Reed, J., Bishop, A., Phillips, J., Ferguson, S., Mouzon, B., Mullan, M., Mathura, V., Mullan, M., Ait-Ghezala, G., Crawford, F., 2011. Proteomic CNS profile of delayed cognitive impairment in mice exposed to Gulf war illness. *NeuroMol. Med.* 13, 275–288.
- Abou-Donia, M.B., Conboy, L.A., Kokkotou, E., Jacobson, E., Elmasry, E.M., Elkafrawy, P., Neely, M., Bass, C.R., Sullivan, K., 2017. Screening for novel central nervous system biomarkers in veterans with Gulf War Illness. *Neurotoxicol. Teratol.* 61, 36–46.
- Alshel, Z., Albrecht, D.S., Bergan, C., Akeju, O., Clauw, D.J., Conboy, L., Edwards, R.R., Kim, M., Lee, Y.C., Protsenko, E., Napadow, V., Sullivan, K., Loggia, M.L., 2020. In-vivo imaging of neuroinflammation in veterans with Gulf War Illness. *Brain Behav. Immun.* 1591 (19), 31334 pii: S0889.
- Banks, C.N., Lein, P.J., 2012. A review of experimental evidence linking neurotoxic organophosphorus compounds and inflammation. *Neurotoxicology* 33 (3), 575–584.
- Barnes, D.E., Byers, A.L., Gardner, R.C., Seal, K.H., Boscardin, W.J., Yaffe, K., 2018. Association of mild traumatic brain injury with and without loss of consciousness with dementia in US military veterans. *JAMA Neurol.* 75 (9), 1055–1061.
- Belgrad, J., Dutta, D.J., Bromley-Coolidge, S., Kelly, K.A., Michalovic, L.T., Sullivan, K.A., O’Callaghan, J.P., Fields, R.D., 2019. Oligodendrocyte involvement in Gulf War Illness. *Glia* 67 (11), 2107–2124.
- Benjamini, Y., Hochberg, Y., 1995. Controlling the false discovery rate: a practical and powerful approach to multiple testing. *J. Roy. Stat. Soc.: Ser. B (Methodol.)* 57 (1), 289–300.
- Bramlett, H.M., Dietrich, W.D., 2002. Quantitative changes in white and gray matter 1 year following traumatic brain injuries in rats. *Acta Neuropathol.* 103, 607–614.
- Broderick, G., Kreitz, A., Fuite, J., Fletcher, M.A., Vernon, S.D., Klimas, N., 2011. A pilot study of immune network remodeling under challenge in Gulf War Illness. *Brain Behav. Immun.* 25 (2), 302–313.
- Buyse, D.J., Reynolds, C.F., Monk, T.H., Berman, S.R., Kupfer, D.J., 1989. The Pittsburgh sleep quality index: a new instrument for psychiatric practice and research. *Psychiatry Res.* 28, 193–213.
- Chao, L.L., Rothlind, J.C., Cardenas, V.A., Meyerhoff, D.J., Weiner, M.W., 2010. Effects of low-level exposure to sarin and cyclosarin during the 1991 Gulf War on brain function and brain structure in US veterans. *NeuroToxicology* 31 (5), 493–501.
- Chao, L.L., Abadjian, L., Hlaviv, J., Meyerhoff, D.J., Weiner, M.W., 2011. Effects of low-level sarin and cyclosarin exposure and Gulf War illness on brain structure and function: a study at 4T. *NeuroToxicology* 32, 814–822.
- Chao, L.L., Zhang, Y., Buckley, S., 2015. Effects of low-level sarin and cyclosarin exposure on white matter integrity in Gulf War Veterans. *NeuroToxicology* 48, 239–248.
- Chao, L.L., 2018. The relationship between traumatic brain injury and rates of chronic symptomatic illness in 202 Gulf War veterans. *Mil. Med.* 183 (11–12), e571–e579.
- Colgan, N., Siow, B., O’Callaghan, J.M., Harrison, I.F., Wells, J.A., Holmes, H.E., Ismail, O., Richardson, S., Alexander, D.C., Collins, E.C., Fisher, E.M., Johnson, R., Schwarz, A.J., Ahmed, Z., O’Neill, M.J., Murray, T.K., Zhang, H., Lythgoe, M.F., 2016. Application of neurite orientation dispersion and density imaging (NODDI) to a tau pathology model of Alzheimer’s disease. *NeuroImage* 125, 739–744.
- Desikan, R.S., Ségonne, F., Fischl, B., Quinn, B.T., Dickerson, B.C., Blacker, D., Buckner, R.L., Dale, A.M., Maguire, R.P., Hyman, B.T., Albert, M.S., Killiany, R.J., 2006. An automated labeling system for subdividing the human cerebral cortex on MRI scans into gyral based regions of interest. *NeuroImage* 31 (3), 968–980.
- Fischl, B., 2012. FreeSurfer. *NeuroImage* 62 (2), 774–781.
- Fletcher, M.A., Zeng, X.R., Barnes, Z., Levis, S., Klimas, N.G., 2009. Plasma cytokines in women with chronic fatigue syndrome. *J. Transl. Med.* 7, 96.
- Fukutomi, H., Glasser, M.F., Zhang, H., Autio, J.A., Coalson, T.S., Okada, T., Togashi, K., Van Essen, D.C., Hayashi, T., 2018. Neurite imaging reveals microstructural variations in human cerebral cortical gray matter. *NeuroImage* 182 (15), 488–499.
- Gade, D.M., Wenger, J.B., 2011. Combat exposure and mental health: the long-term effects among US Vietnam and Gulf War veterans. *Health Econ.* 20, 401–416.
- Glasser, M.F., Goyal, M.S., Preuss, T.M., Raichle, M.E., Van Essen, D.C., 2014. Trends and properties of human cerebral cortex: Correlations with cortical myelin content. *NeuroImage* 93 (part. 2), 165–175.
- Grussu, F., Schneider, T., Tur, C., Yates, R.L., Tachrount, M., Ianus, A., Yiannakas, M.C., Newcombe, J., Zhang, H., Alexander, D.C., DeLuca, G.C., Gandini Wheeler-Kingshott, C.A.M., 2017. Neurite dispersion: a new marker of multiple sclerosis spinal cord pathology? *Ann. Clin. Transl. Neurol.* 4 (9), 663–679.
- Golomb, B.A., 2008. Acetylcholinesterase inhibitors and Gulf War illnesses. *Proc. Natl. Acad. Sci.* 105 (11), 4295–4300.
- Groppe, D.M., Urbach, T.P., Kutas, M., 2014. Mass univariate analysis of event-related brain potentials/fields I: a critical tutorial review. *Psychophysiology* 48 (12), 1711–1725.
- Gulani, V., Webb, A., Duncan, I., Lauterbur, P., 2001. Apparent diffusion tensor measurements in myelin-deficient rat spinal cords. *Magn. Reson. Med.* 45, 191–195.
- Gur, R.C., Mozley, P.D., Resnick, S.M., Gottlieb, G.L., Kohn, M., Zimmerman, R., Herman, G., Atlas, S., Grossman, R., Berretta, D., 1991. Gender differences in age effect on brain atrophy measured by magnetic resonance imaging. *PNAS* 88 (7), 2845–2849.
- Hawari, F.I., Rouhani, F.N., Cui, X., Yu, Z.X., Buckley, C., Kaler, M., Levine, S.J., 2004. Release of full-length 55-kDa TNF receptor 1 in exosome-like vesicles: a mechanism for generation of soluble cytokine receptors. *PNAS* 101 (5), 1297–1302.

- Heaton, K.J., Palumbo, C.L., Proctor, S.P., Killiany, R.J., Yurgelun-Todd, D.A., White, R.F., 2007. Quantitative magnetic resonance brain imaging in US army veterans of the 1991 Gulf War potentially exposed to sarin and cyclosarin. *NeuroToxicology* 28, 761–769.
- Hoge, C.W., McGurk, D., Thomas, J.L., Cox, A.L., Engel, C.C., Castro, C.A., 2008. Mild traumatic brain injury in U.S. soldiers returning from Iraq. *New England J. Med.* 358, 20.
- Janulewicz, P., Kregel, M., Quinn, E., Heeren, T., Toomey, R., Killiany, R., Zundel, C., Ajama, J., O'Callaghan, J., Steele, L., Klimas, N., Sullivan, K., 2018. The multiple hit hypothesis for Gulf War illness: self-reported chemical/biological weapons exposure and mild traumatic brain injury. *Brain Sci.* 8 (11) pii: E198.
- Janulewicz, P.A., Seth, R.K., Carlson, J.M., Ajama, J., Quinn, E., Heeren, T., Klimas, N., Lasley, S.M., Horner, R.D., Sullivan, K., Chatterjee, S., 2019. The gut-microbiome in Gulf War veterans: A preliminary report. *Int. J. Environ. Res. Public Health* 16, 3571.
- Jaundoo, R., Bohmann, J., Gutierrez, G.E., Klimas, N., Broderick, G., Craddock, T.J.A., 2018. Using a consensus docking approach to predict adverse drug reactions in combination drug therapies for Gulf War illness. *Int. J. Mol. Sci.* 19, 3355.
- Jeffrey, M.G., Kregel, M., Kibler, J.L., Zundel, C., Klimas, N.G., Sullivan, K., Craddock, T.J.A., 2019. Neuropsychological findings in Gulf War illness: a review. *Front. Psychol.* 10, 2088.
- Jenkinson, M., Beckmann, C.F., Behrens, T.E.J., Woolrich, M.W., Smith, S.M., 2012. FSL. *NeuroImage* 62, 782–790.
- Johnson, G.A., Calabrese, E., Little, P.B., Hedlund, L., Qi, Y., Badea, A., 2014. Quantitative mapping of trimethyltin injury in the rat brain using magnetic resonance histology. *Neurotoxicology* 42, 12–23.
- Khaiboullina, S.F., DeMeirleir, K.L., Rawat, S., Berk, G.S., Gaynor-Berk, R.S., Mijatovic, T., Blatt, N., Rizvanov, A.A., Young, S.G., Lombardi, V.C., 2014. Cytokine expression provides clues to the pathophysiology of Gulf War illness and myalgic encephalomyelitis. *Cytokine* 72 (1), 1–8.
- Kimura, Y., Sato, N., Ota, M., Shigemoto, Y., Morimoto, E., Enokizono, M., Matsuda, H., Shin, I., Amano, K., Ono, H., Sato, W., Yamamura, T., 2019. Brain abnormalities in myalgic encephalomyelitis/chronic fatigue syndrome: evaluation by diffusional kurtosis imaging and neurite diffusional kurtosis imaging and neurite orientation dispersion and density imaging. *J. Magn. Reson. Imaging* 49, 818–824.
- Koo, B.B., Michalovitz, L.T., Calderazzo, S., Kelly, K.A., Sullivan, K., Killiany, R.J., O'Callaghan, J.P., 2018. Corticosterone potentiates DFP-induced neuroinflammation and affects high-order diffusion imaging in a rat model of Gulf War Illness. *Brain Behavior, and Immunity* 67, 42–46.
- Kumar, A., Loane, D.J., 2012. Neuroinflammation after traumatic brain injury: opportunities for therapeutic intervention. *Brain Behav. Immun.* 26, 1191–1201.
- Locker, A.R., Michalovitz, L.T., Kelly, K.A., Miller, J.V., Miller, D.B., O'Callaghan, J.P., 2017. Corticosterone primes the neuroinflammatory response to Gulf War Illness-relevant organophosphates independently of acetylcholinesterase inhibition. *J. Neurochem.* 142 (3), 444–455.
- McCunn, P., Gilbert, K.M., Zeman, P., Li, A.X., Strong, M.J., Khan, A.R., Bartha, R., 2019. Reproducibility of neurite orientation dispersion and density imaging (NODDI) in rats at 9.4 Tesla. *PLoS ONE* 14 (4), e0215974.
- Melzack, R., 1975. The McGill Pain Questionnaire: Major properties and scoring methods. *PAIN* 1 (3), 277–299.
- Michalovitz, L.T., Locker, A.R., Kelly, K.A., Miller, J.A., Barnes, Z., Fletcher, M.A., Miller, D.B., Klimas, N.G., Morris, M., Lasley, S.M., O'Callaghan, J.P., 2019. Corticosterone and pyridostigmine/DEET exposure attenuate peripheral cytokine expression: Supporting a dominant role for neuroinflammation in a mouse model of Gulf War Illness. *NeuroToxicology* 70, 26–32.
- National Academies of Sciences, Engineering, and Medicine. (2016). *Gulf War and Health: Volume 10: Update of Health Effects of Serving in the Gulf War, 2016*. Washington, DC: The National Academies Press.
- Miller, J.V., LeBouf, R.F., Kelly, K.A., Michalovitz, L.T., Ranpara, A., Locker, A.R., Miller, D.B., O'Callaghan, J.P., 2018. The neuroinflammatory phenotype in a mouse model of Gulf War illness is unrelated to brain regional levels of acetylcholine as measured by quantitative HILIC-UPLC-MS/MS. *Toxicol. Sci.* 165 (2), 302–313.
- Milligan, E., Watkins, L., 2009. Pathological and protective roles of glia in chronic pain. *Nat. Rev. Neurosci.* 10, 23–26.
- Naughton, S.X., Hernandez, C.M., Beck, W.D., Poddar, I., Yanasak, N., Lin, P.C., Terry Jr., A.V., 2018. Repeated exposures to diisopropylfluorophosphate result in structural disruptions of myelinated axons and persistent impairments of axonal transport in the brains of rats. *Toxicology* 406–407, 92–103.
- O'Callaghan, J.P., Kelly, K.A., Locker, A.R., Miller, D.B., Lasley, S.M., 2015. Corticosterone primes the neuroinflammatory response to DFP in mice: potential animal model of Gulf War Illness. *J. Neurochem.* 133, 708–721.
- O'Callaghan, J.P., Miller, D.B., 2019. Neuroinflammation disorders exacerbated by environmental stressors. *Metabolism* 100S, 153951.
- O'Donovan, A., Chao, L.L., Paulson, J., Samuelson, K.W., Shigenaga, J.K., Grunfeld, C., Weiner, M.W., Neylan, T.C., 2015. Altered inflammatory activity associated with reduced hippocampal volume and more severe posttraumatic stress symptoms in Gulf War veterans. *Psychoneuroendocrinology* 51, 557–566.
- Parkitny, L., Middleton, S., Baker, K., Younger, J., 2015. Evidence for abnormal cytokine expression in Gulf War Illness: a preliminary analysis of daily immune monitoring data. *BMC Immunol.* 16, 57.
- Proctor, S.P., Heaton, K.J., Heeren, T., White, R.F., 2006. Effects of sarin and cyclosarin exposure during the 1991 Gulf War on neurobehavioral functioning in US army veterans. *NeuroToxicology* 27 (6), 931–939.
- Proctor, S.P., Heeren, T., White, R.F., Wolfe, J., Borgos, M.S., Davis, J.D., Pepper, L., Clapp, R., Sutker, P.B., Vasterling, J.J., Oznoff, D., 1998. Health status of Persian Gulf War veterans: self-reported symptoms, environmental exposures and the effect of stress. *Int. J. Epidemiol.* 27 (6), 1000–1010.
- Puri, B.K., Jakeman, P.M., Agour, M., Gunatilake, K.D.R., Fernando, K.A.C., Gurusinghe, A.L., Treasaden, I.H., Waldman, A.D., Gishen, P., 2012. Regional grey and white matter volumetric changes in myalgic encephalomyelitis (chronic fatigue syndrome): a voxel-based morphometry 3T MRI study. *British J. Radiol.* 85, e270–e273.
- Raivich, G., Jones, L.L., Werner, A., Blüthmann, H., Doetschmann, T., Kreutzberg, G.W., 1999. Molecular signals for glial activation: Pro- and anti-inflammatory cytokines in the injured brain. *Acta Neurochir. Suppl.* 73, 21–30.
- Rao, A.N., Patil, A., Brodnik, Z.D., Qiang, L., España, R.A., Sullivan, K.A., Black, M.M., Baas, P.W., 2017. Pharmacologically increasing microtubule acetylation corrects stress-exacerbated effects of organophosphates on neurons. *Traffic* 18 (7), 433–441.
- Rathbone, A.T., Tharmaradinam, S., Jiang, S., Rathbone, M.P., Kumbhare, D.A., 2015. A review of the neuro- and systemic inflammatory responses in post concussion symptoms: Introduction of the “post-inflammatory brain syndrome”. *PIBS Brain Behav. Immun.* 46, 1–16.
- Rayhan, R.U., Stevens, B.W., Timbol, C.R., Adewuyi, O., Walitt, B., VanMeter, J.W., Baraniuk, J.N., 2013. Increased brain white matter axial diffusivity associated with fatigue, pain, and hyperalgesia in Gulf War illness. *PLoS ONE* 8 (3), e58493.
- Robbins, C.A., Daneshvar, D.H., Picano, J.D., Gevett, B.E., Baugh, C.M., Riley, D.O., Nowinski, C.J., McKee, A.C., Cantu, R.C., Stern, R.A., 2014. Self-reported concussion history: impact of providing a definition of concussion. *Open Access J. Sports Med.* 7, 99–103.
- Seichepine, D.R., Stamm, J.M., Daneshvar, D.H., Riley, D.O., Baugh, C.M., Gavett, B.E., Tripodi, Y., Martin, B., Chaisson, C., McKee, A.C., Cantu, R.A., Nowinski, C.J., Stern, R.A., 2013. Profile of self-reported problems with executive functioning in college and professional football players. *J. Neurotrauma* 30, 1299–1304.
- Smets, E.M.A., Garsen, B., Bonke, B., De Haes, J.C.J.M., 1995. The Multidimensional Fatigue Inventory (MFI) Psychometric Qualities of an Instrument to Assess Fatigue. *J. Psychosom. Res.* 39 (5), 315–325.
- Smith, D.H., Johnson, V.E., Stewart, W., 2013. Chronic neuropathologies of single and repetitive TBI: substrates of dementia? *Nature Rev. Neurol.* 9 (4), 211–221.
- Spradling, K.D., Lumley, L.A., Robison, C.L., Meyerhoff, J.L., Dillman, J.F., 2011. Transcriptional responses of the nerve agent-sensitive brain regions amygdala, hippocampus, piriform cortex, septum, and thalamus following exposure to the organophosphonate anticholinesterase sarin. *J. Neuroinflammation* 8, 84.
- Steele, L., 2000. Prevalence and patterns of Gulf War illness in Kansas veterans: association of symptoms with characteristics of person, place, and time of military service. *Am. J. Epidemiol.* 152 (10), 922–1002.
- Sullivan, K., Kregel, M., Bradford, W., Stone, C., Thompson, T.A., Heeren, T., White, R.F., 2017. Neuropsychological functioning in military pesticide applicators from the Gulf War: effects on information processing speed, attention and visual memory. *Neurotoxicol. Teratol.* 65, 1–13.
- Sullivan, K., Kregel, M., Proctor, S.P., Devine, S., Heeren, T., White, R.F., 2003. Cognitive functioning in treatment-seeking Gulf War veterans: pyridostigmine bromide use and PTSD. *J. Psychopathol. Behav. Assess.* 25, 95–103.
- Tang, L.W., Zheng, H., Chen, L., Zhou, S.Y., Huang, W.J., Li, Y., Wu, X., 2015. Gray matter volumes in patients with chronic fatigue syndrome. pii:380615. *Evidence-Based Complementary Alternative Med.*
- Toomey, R., Alpern, R., Vasterling, J.J., Baker, D.G., Reda, D.J., Lyons, M.J., Henderson, W.G., Kang, H.K., Eisen, S.A., Murphy, F.M., 2009. Neuropsychological functioning of U.S. Gulf War veterans 10 years after the war. *J. Int. Neuropsychological Soc.* 15 (5), 717–729.
- Vynorius, K.C., Paquin, A.M., Seichepine, D.R., 2016. Lifetime multiple mild traumatic brain injuries are associated with cognitive and mood symptoms in young healthy college students. *Front. Neurol.* 7, 188.
- Tuch, D.S., 2004. Q-ball imaging. *Magn. Reson. Med.* 52 (6), 1358–1372.
- Whistler, T., Fletcher, M.A., Lonergan, W., Zeng, X.R., Lin, J.M., LaPerriere, A., Vernon, S.D., Klimas, N.G., 2009. Impaired immune function in Gulf War Illness. *BMC Med. Genomics* 2, 12.
- White, R.F., Steele, L., O'Callaghan, J.P., Sullivan, K., Binns, J.H., Golomb, B.A., Bloom, F.E., Bunker, J.A., Crawford, F., Graves, J.C., Hardie, A., Klimas, N., Knox, M., Meggs, W.J., Melling, J., Philbert, M.A., Grashow, R., 2016. Recent research on Gulf War Illness and other health problems in veterans of the 1991 Gulf War: Effects of toxicant exposures during deployment. *Cortex* 74, 449–475.
- Winkler, A.M., Ridgway, G.R., Webster, M.A., Smith, S.M., Nichols, T.E., 2014. Permutation inference for the general linear model. *NeuroImage* 92, 381–397.
- Xanthoulas, S., Pasparakis, M., Kousteni, S., Brakebusch, C., Wallach, D., Bauer, J., Lassmann, H., Kollias, G., 2004. Tumor Necrosis Factor (TNF) receptor shedding controls thresholds of innate immune activation that balance opposing TNF functions in infectious and inflammatory diseases. *J. Exp. Med.* 200 (3), 367–376.
- Yee, M.K., Seichepine, D.R., Janulewicz, P.A., Sullivan, K.A., Proctor, S.P., Kregel, M.H., 2016. Self-reported traumatic brain injury, health and rate of chronic multisymptom illness in veterans from the 1990–1991 Gulf War. *J. Head Trauma Rehabilitation* 31 (5), 320–328.
- Yee, M.K., Janulewicz, P.A., Seichepine, D.R., Sullivan, K.A., Proctor, S.P., Kregel, M.H., 2017. Multiple mild traumatic brain injuries are associated with increased rates of health symptoms and Gulf War illness in a Cohort of 1990–1991 Gulf War Veterans. *Brain Sciences* 7, 79.
- Yeh, F.C., Wedeen, V.J., Tseng, W.Y., 2010. Generalized q-Sampling Imaging. *IEEE Trans. Med. Imaging* 29 (9), 1626–1635.
- Yeh, F.C., Liu, L., Hitchens, T.K., Wu, Y.L., 2017. Mapping immune cell infiltration using restricted diffusion MRI. *Magn. Reson. Med.* 77, 603–612.
- Yendiki, A., Pannek, P., Srinivasan, P., Stevens, A., Zöllei, L., Augustinack, J., Wang, R., Salat, D., Ehrlich, S., Behrens, T., Jbabdi, S., Gollub, R., Fischl, B. (2011). Automated probabilistic reconstruction of white-matter pathways in health and disease using an atlas of the underlying anatomy. *frontiers in neuroinformatics*, 5.
- Zelová, H., Hošek, J., 2013. TNF- α signaling and inflammation: interactions between old

- acquaintances. *Inflamm. Res.* 62, 641–651.
- Zhang, H., Schneider, T., Wheeler-Kingshott, C.A., Alexander, D.C., 2012. NODDI: Practical in vivo neurite orientation dispersion and density imaging of the human brain. *NeuroImage* 61, 1000–1016.
- Zhuo, J., Xu, S., Proctor, J.L., Mullins, R.J., Simon, J.Z., Fiskum, G., Gullapalli, R.P., 2012. Diffusion kurtosis as an in vivo imaging marker for reactive astrogliosis in traumatic brain injury. *Neuroimage* 59 (1), 467–477.
- Zundel, C.G., Kregel, M.H., Heeren, T., Yee, M.K., Grasso, C.M., Janulewicz Lloyd, P.A., Coughlin, S.S., Sullivan, K., 2019. Rates of Chronic Medical Conditions in 1991 Gulf War Veterans Compared to the General Population. *Int. J. Environ. Res. Public Health* 16 (6) pii: E949.