

TERRAIN PHOTOGRAPHS
AMERICAN WORLD WAR BATTLEFIELDS
IN EUROPE

33RD DIVISION
CAPTURE OF HAMEL
JULY 4, 1918
SOMME OFFENSIVE
AUGUST 8-20, 1918

PREPARED BY
THE AMERICAN BATTLE MONUMENTS
COMMISSION

THE COMMAND AND STAFF COLLEGE
LIBRARY



Class Symbol M9403-H6-C.73-G3-C33

Accession Number N69601

PREFACE

THIS album is part of a collection of photographs of the various battlefields in Europe upon which the Armed Forces of the United States were actively engaged during World War I.

These terrain photographs were taken and prepared by the American Battle Monuments Commission, as provided in the act of Congress of March 4, 1923, to complete the historical record of the operations of the American units. The series comprises 69 albums containing 1,396 photographs.

The contents of these albums will be of particular value when studied in conjunction with the Summaries of Operations, prepared by the American Battle Monuments Commission, which relate in detail the combat services of each American division.

On the page preceding the photographs will be found a small-scale key map showing the general operation of which this divisional operation was a part. In the pocket inside the back cover will be found a reprint of a 1:20,000 map, of the type used during the war, showing the operation covered by the photographs in this

album. On this index map have been indicated the position of the camera and the direction in which it was sighted in taking each photograph.

On the page opposite each photograph is a section of the 1:20,000 map of the terrain in the vicinity of that pertaining to the photograph. The white wedge-shaped portion of the map indicates the sector of terrain which actually appears in the picture. The plotted position of the camera and the axis of the picture are shown in blue, the length of the blue line approximately indicating the depth of the view. The circled number corresponds to the number of the photograph, of which the numerals before the dash indicate the division and the numerals after the dash indicate the serial number of the photograph in this division.

Various topographical features visible in the photographs have been indicated by name to facilitate orientation.

Complete sets of these albums have been deposited with the National Archives, the Library of Congress, the Historical Division of the War Department General Staff, and the Command and Staff College.

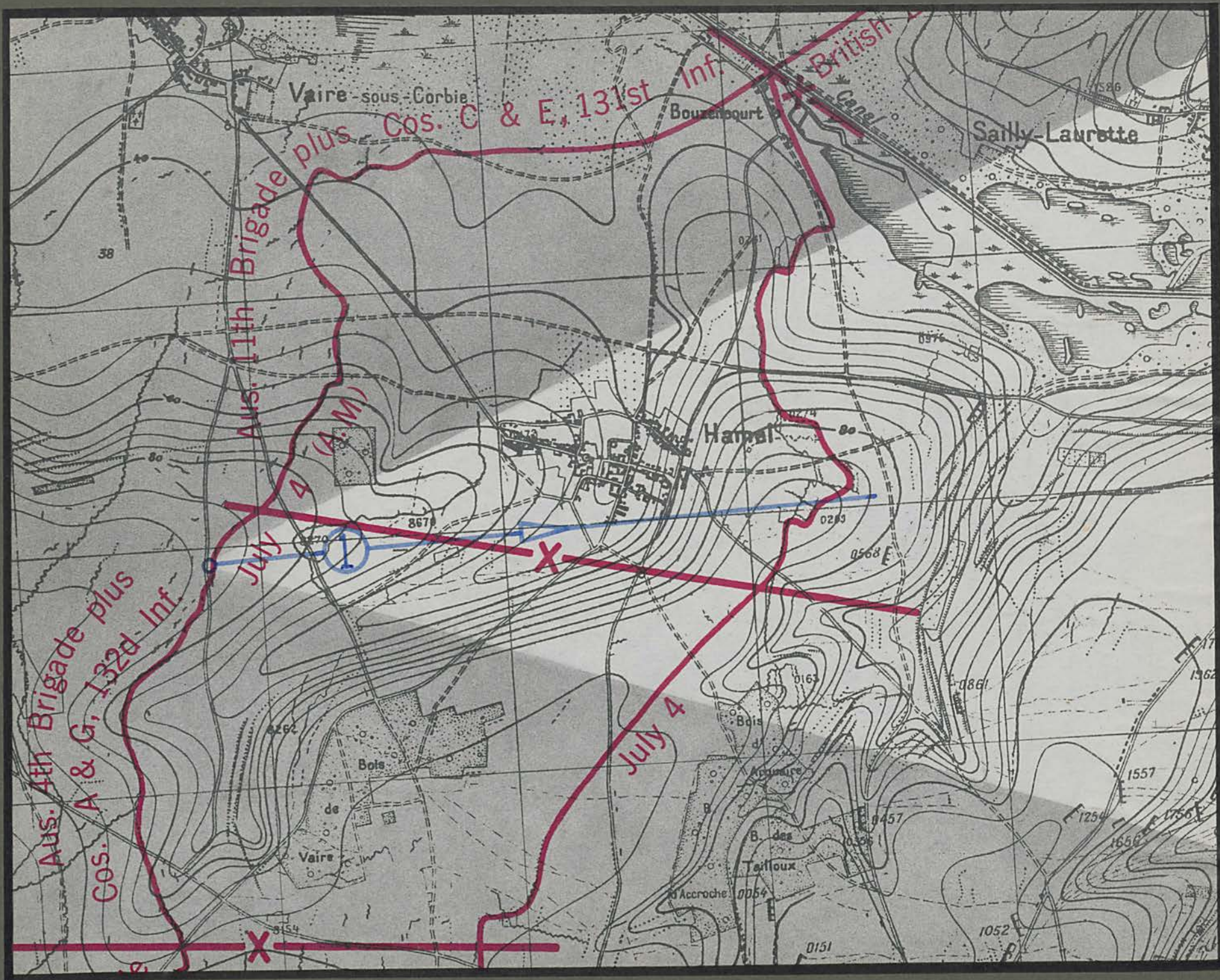
AMERICAN BATTLE MONUMENTS COMMISSION,

John J. Pershing
CHAIRMAN

NOV 22 1946

33RD DIVISION
CAPTURE OF HAMEL

JULY 4, 1918





Sailly-Laurette

B. Malard

Hamel

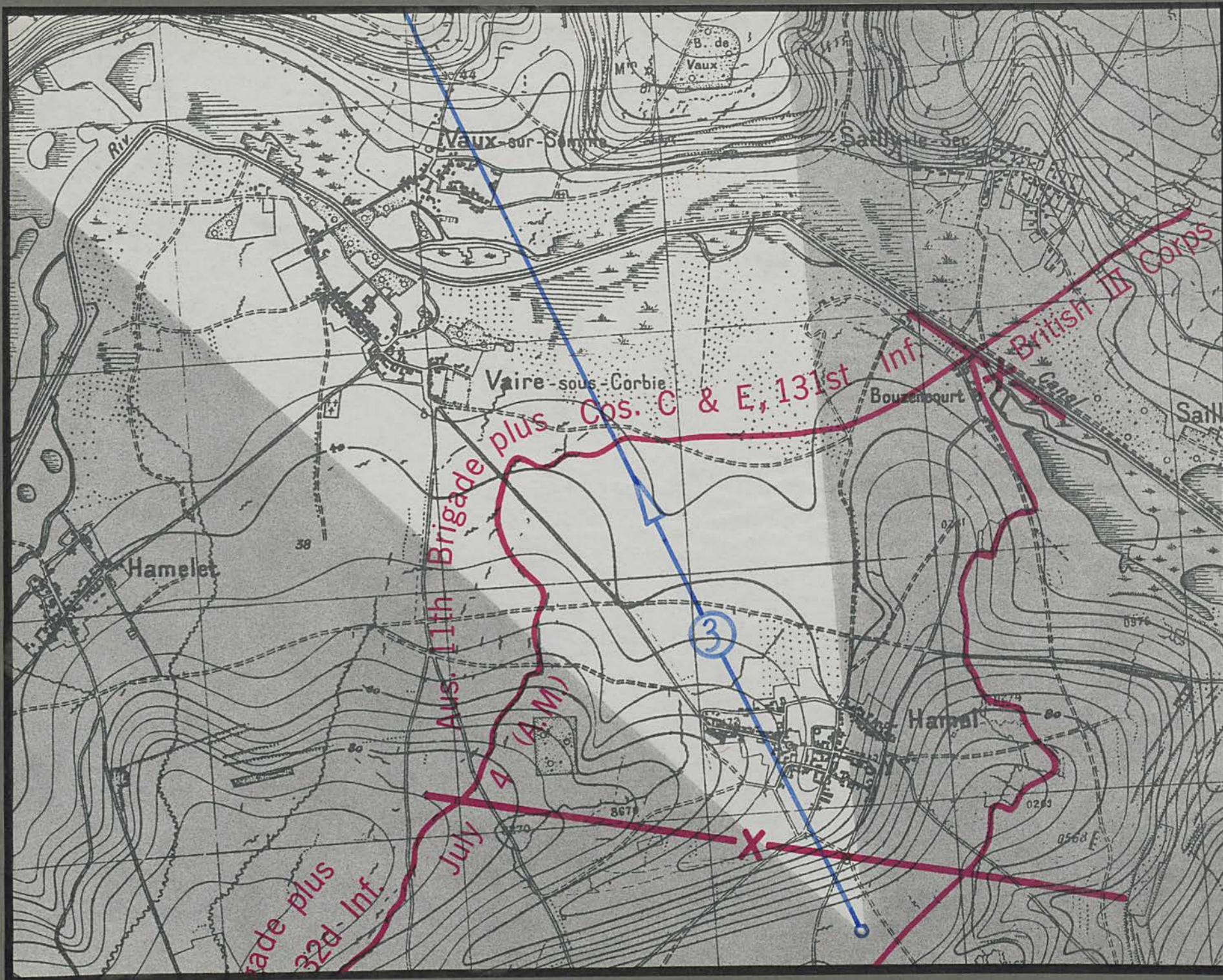
9.55-6.78

B. d'Arquaire

Hamel-Villers Bretonneux road

B. de Vaire.





Vaire

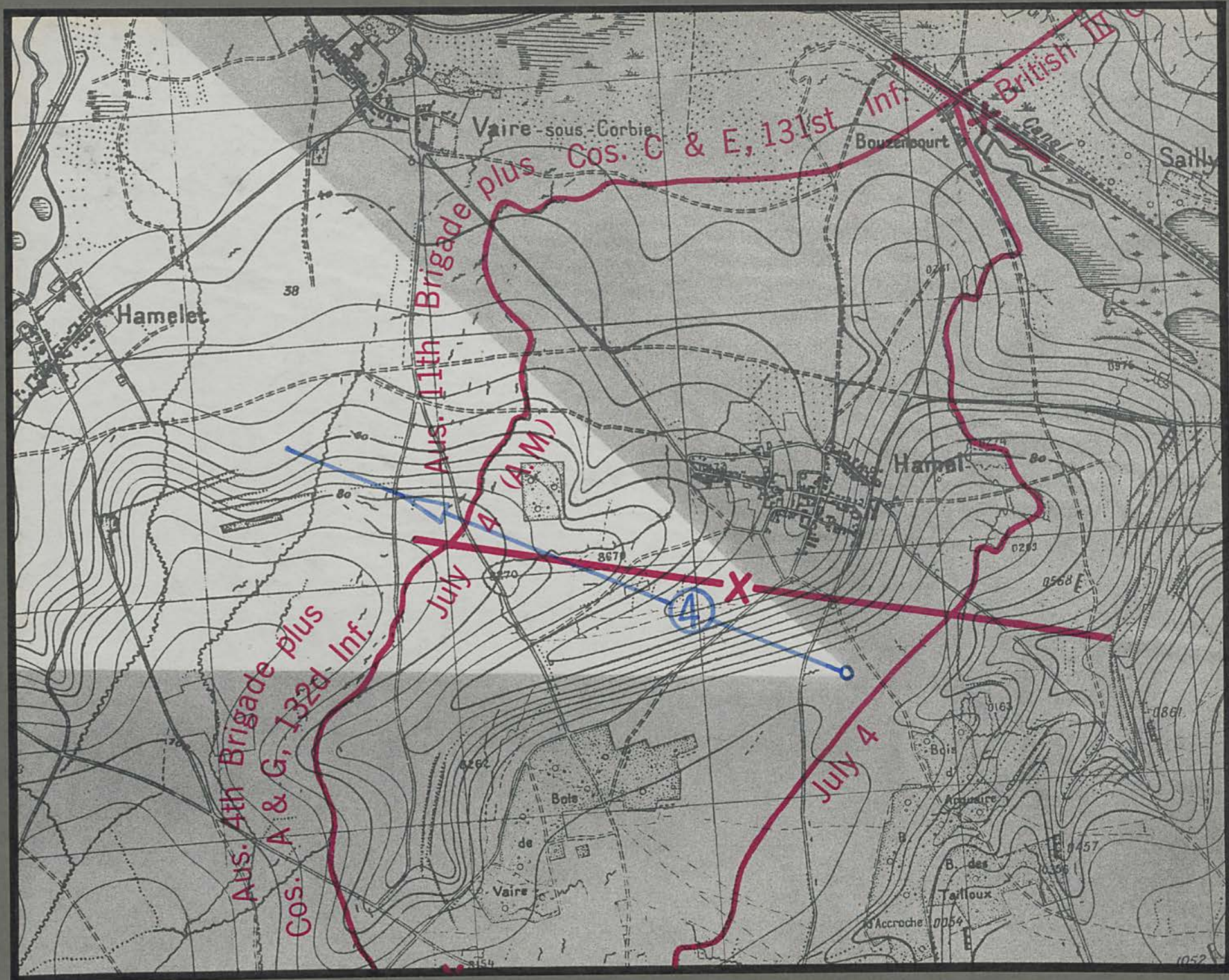
Somme R.

Vaux Point 102

Hamel

B. de Vaux







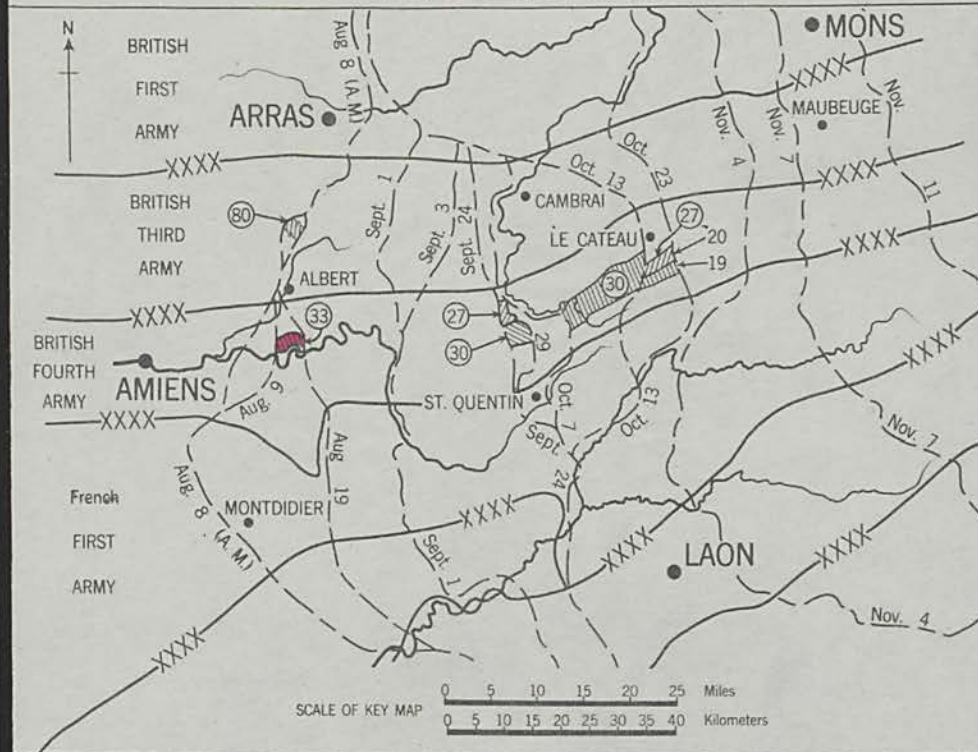
Corbie

Site of rectangular wood in square 87.

33RD DIVISION
SOMME OFFENSIVE

AUGUST 8-20, 1918

KEY MAP
SOMME OFFENSIVE
 AUGUST 8 - NOVEMBER 11, 1918



Area Covered by Operation Shown on Summary Map

Ground Gained by American Divisions

Ground Gained by British and French Divisions

Front Line

27 Circled numeral indicates American Division

Bois Malard

Cerisy-Gailly

les Celestins

Somme R. valley

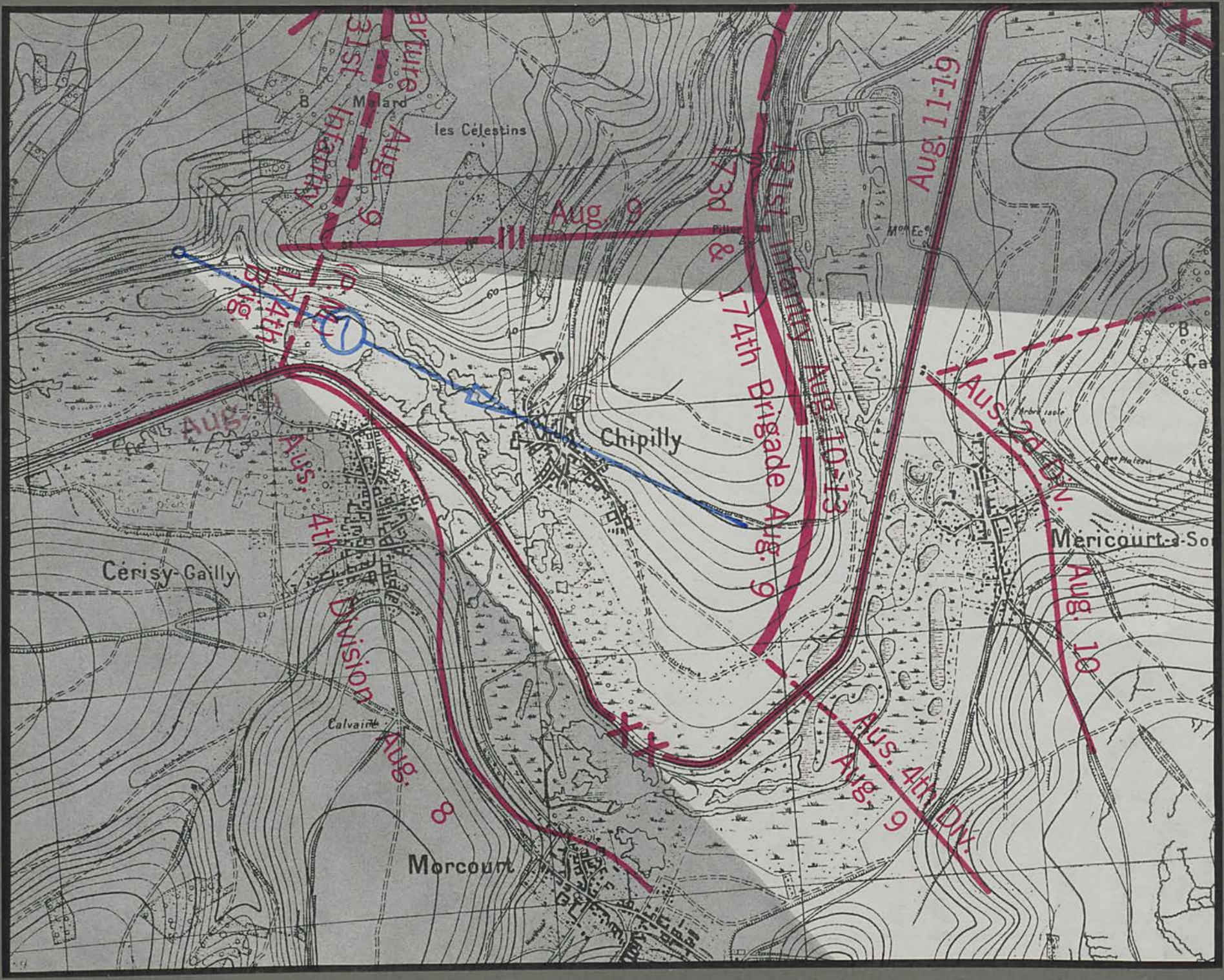




Gressaire Wood road from Cerisy-Gailly Chipilly

Site of "Pilier," Chipilly ridge





B. Maland

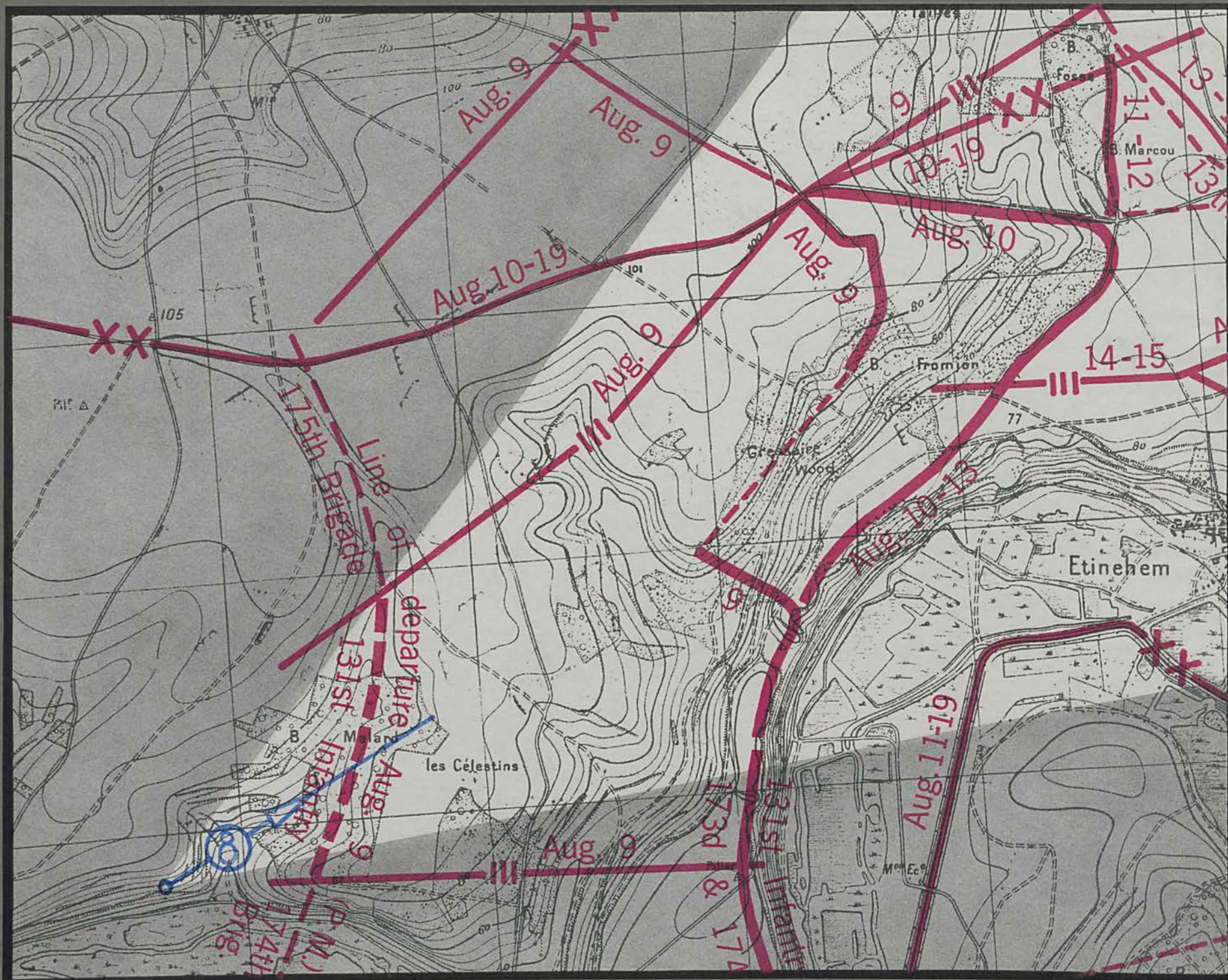
Chipilly ridge

Chipilly

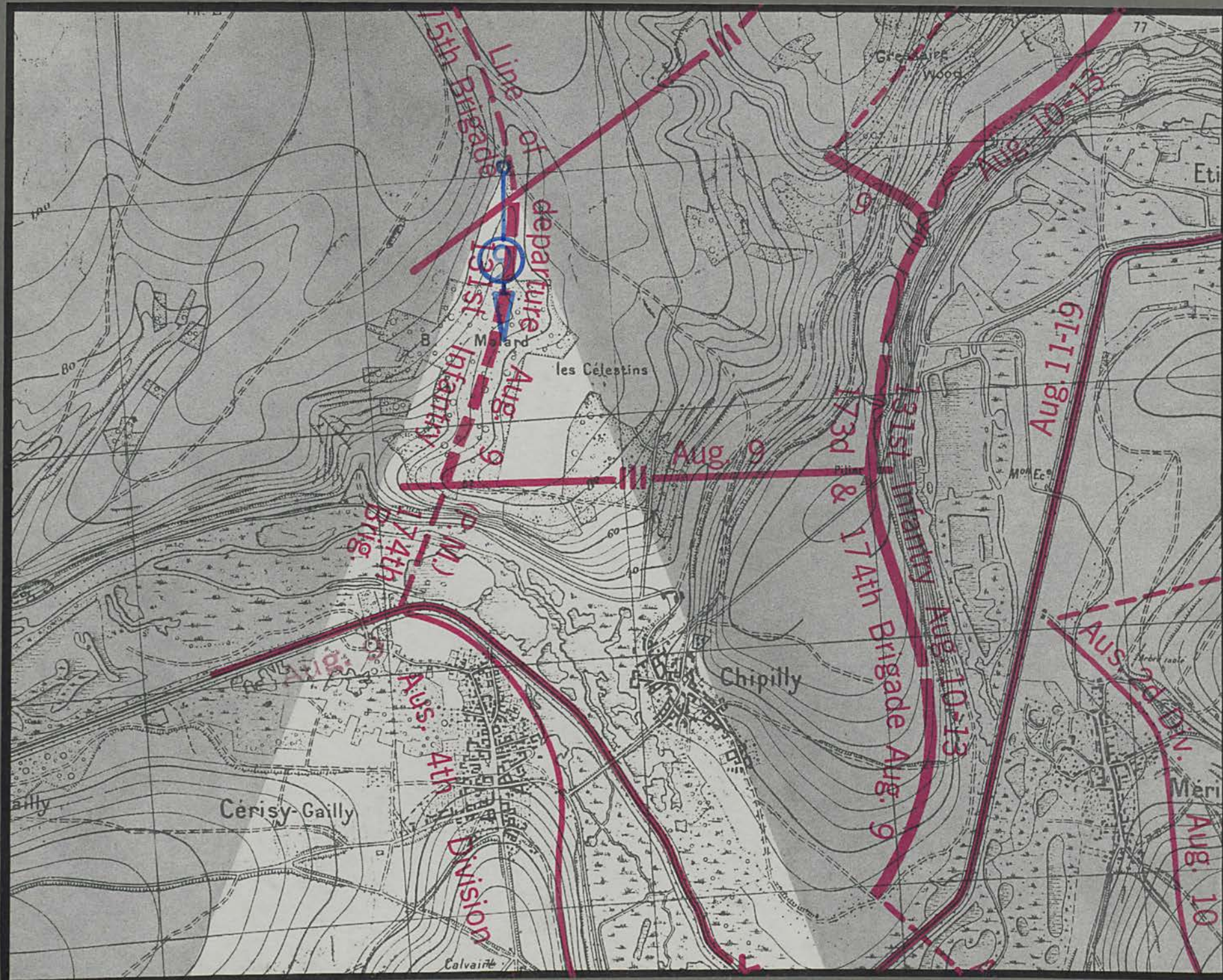
Somme R.

Chipilly - Saily-Laurette road









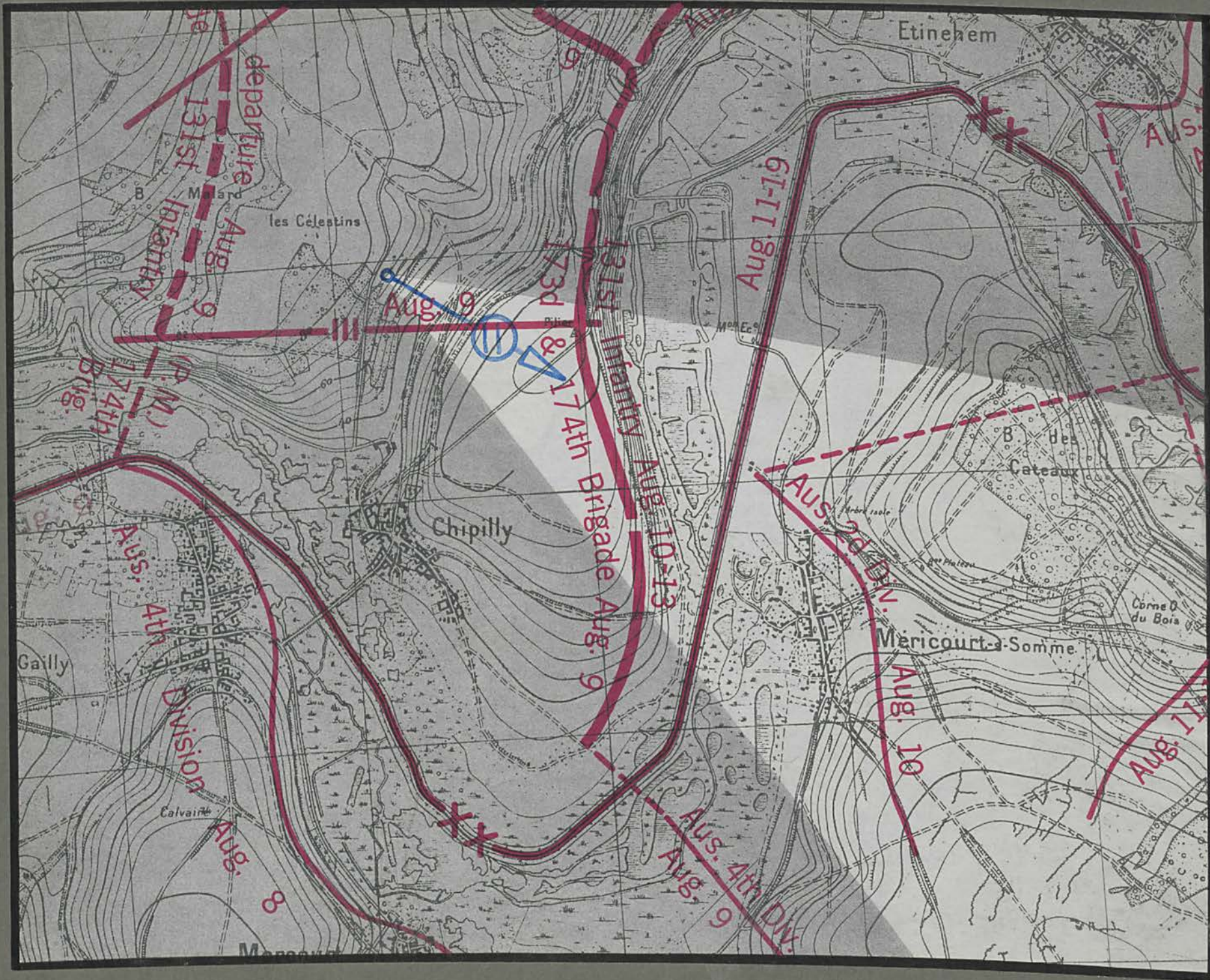


B. Malard

Gressaine Wood

Chipilly Ridge 6.0-9.4

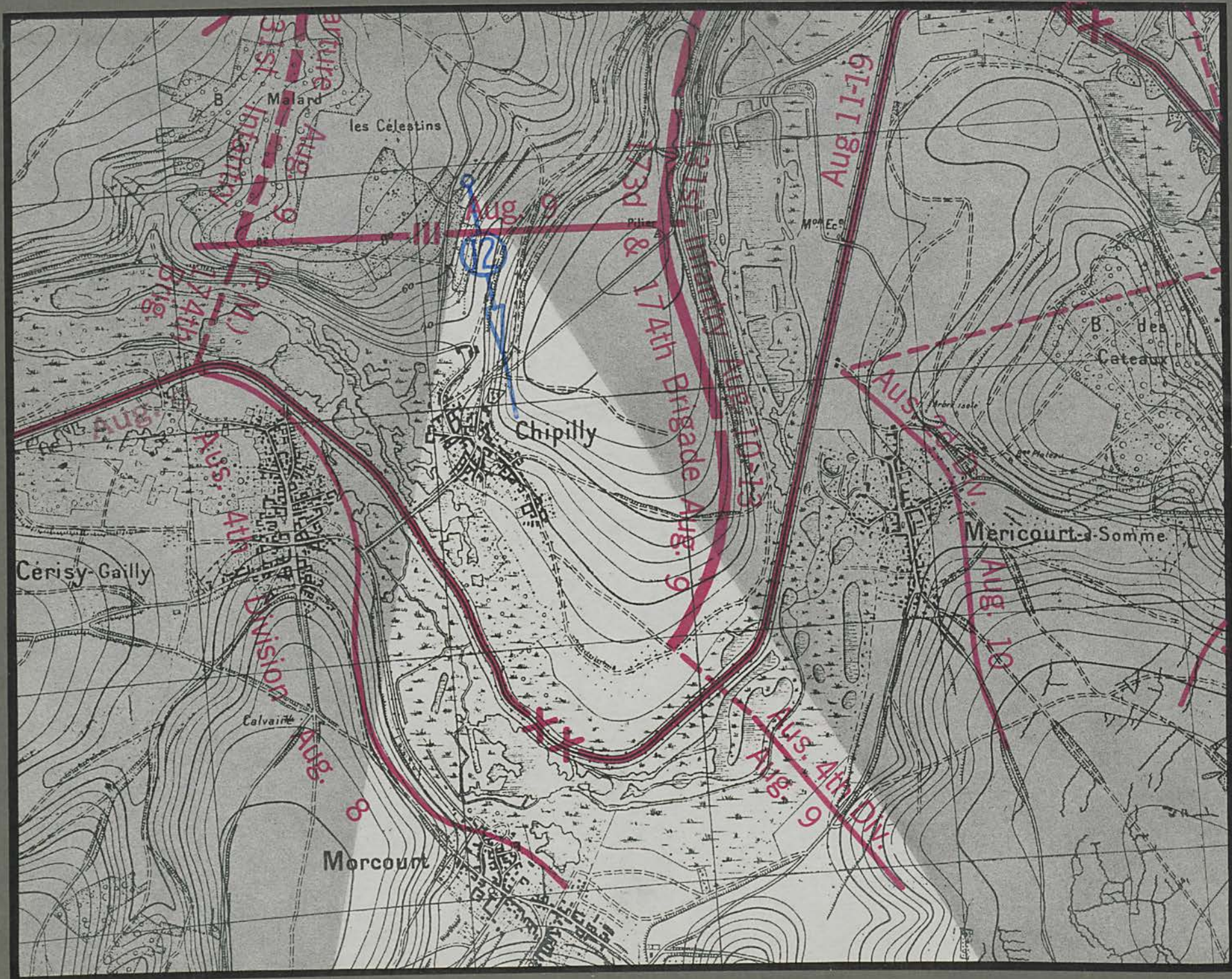






Site of "Plier"

Chipilly Ridge



31st Infantry
Aug. 9

Malard
Aug. 9

les Célestins

Aug. 9

173d & 174th
Brigade Aug. 9

Aug. 11-19

174th
Brig.

Chipilly

AUG. 10-13

AUG. 11-19

Mericourt-Somme

Cerisy-Gailly

AUS. 4th
Div.

Division
Aug. 8

Aug. 8

Morcourt

AUS. 4th Div.
Aug. 9

AUG. 10

Calvaire

B. des
Cateaux

Chipilly Ridge

Somme R. valley

Chipilly



Gressajre Wood

Etinehem Ch.

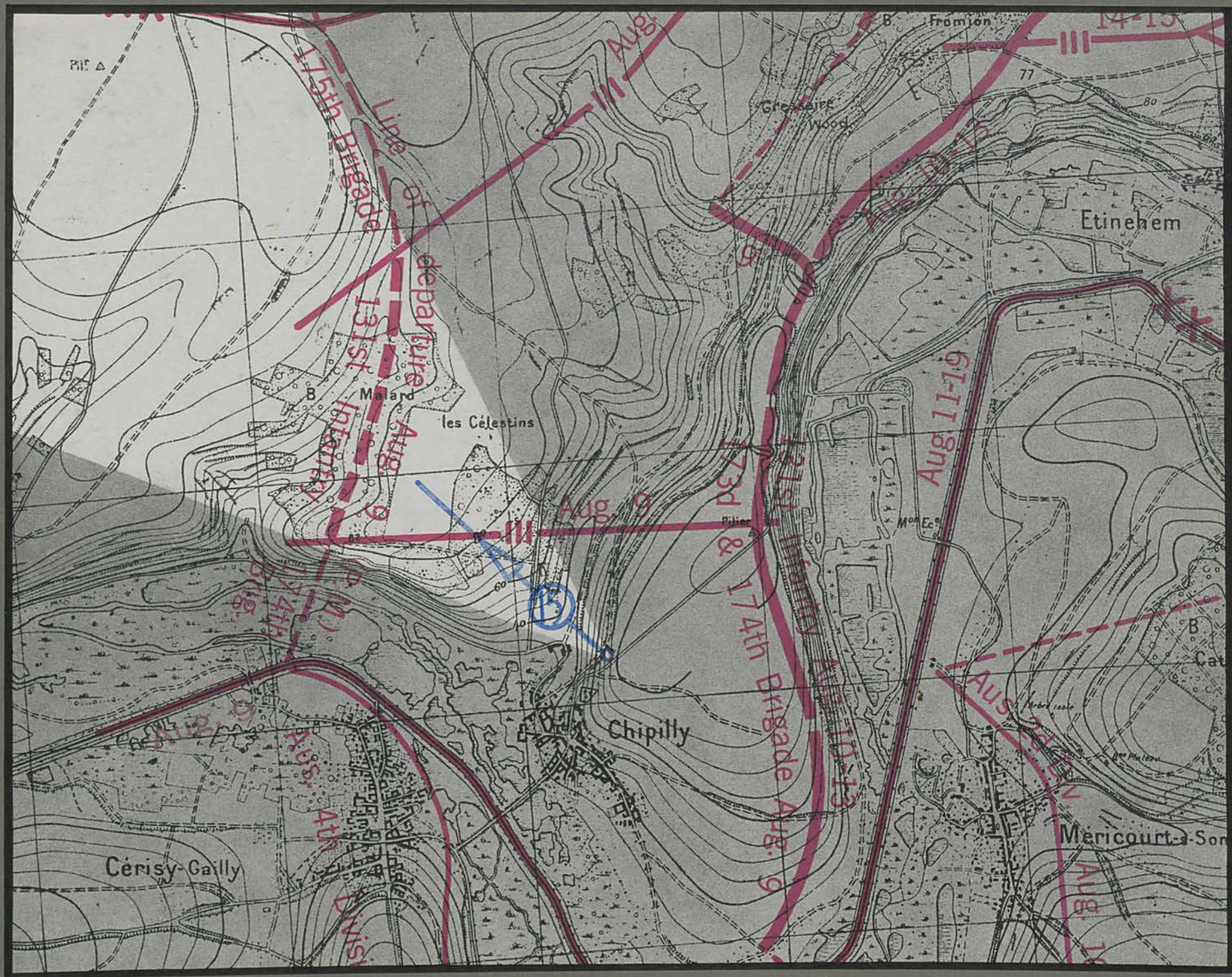
Chipilly Ridge





les Celestins

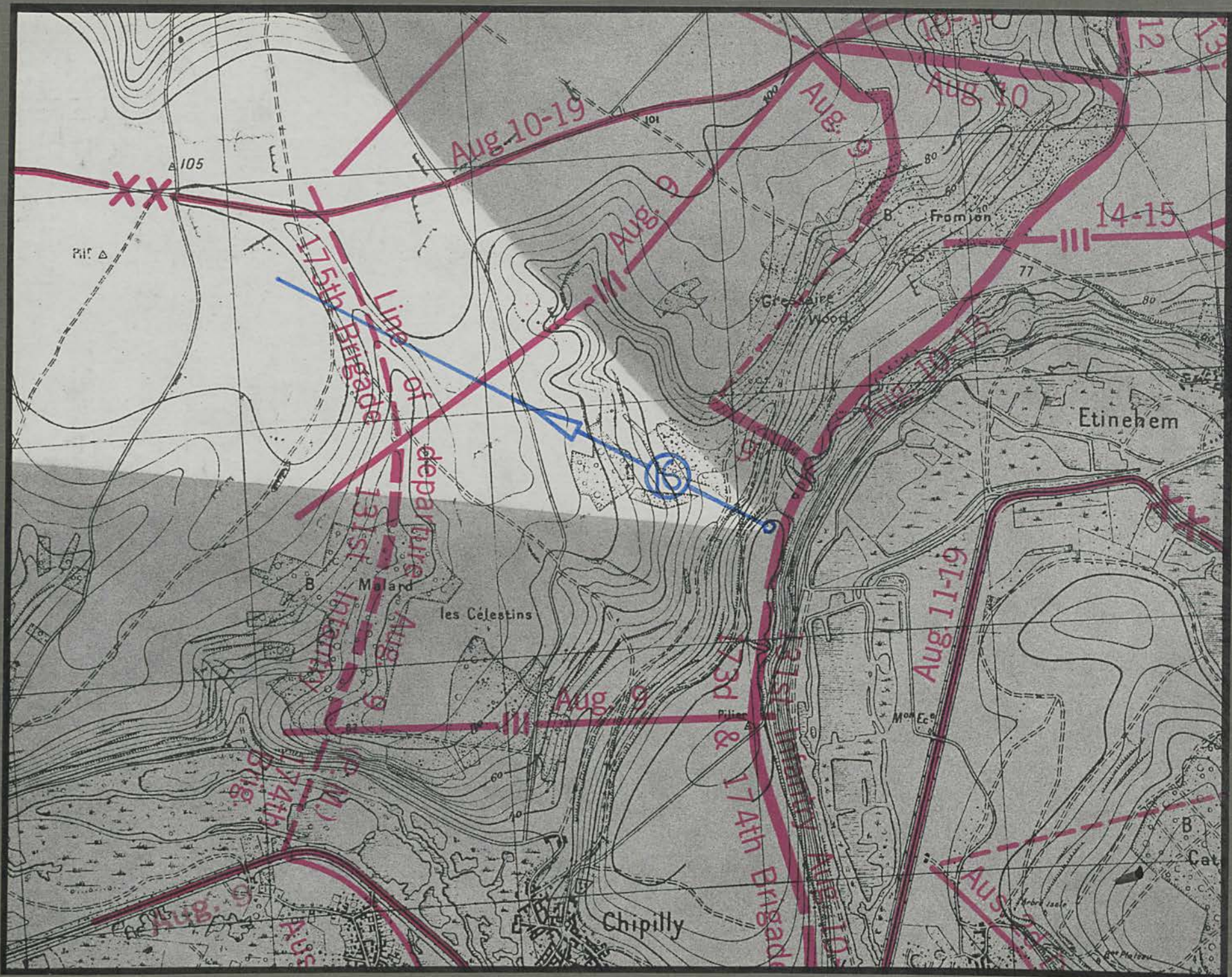
Chipilly - Morlancourt road





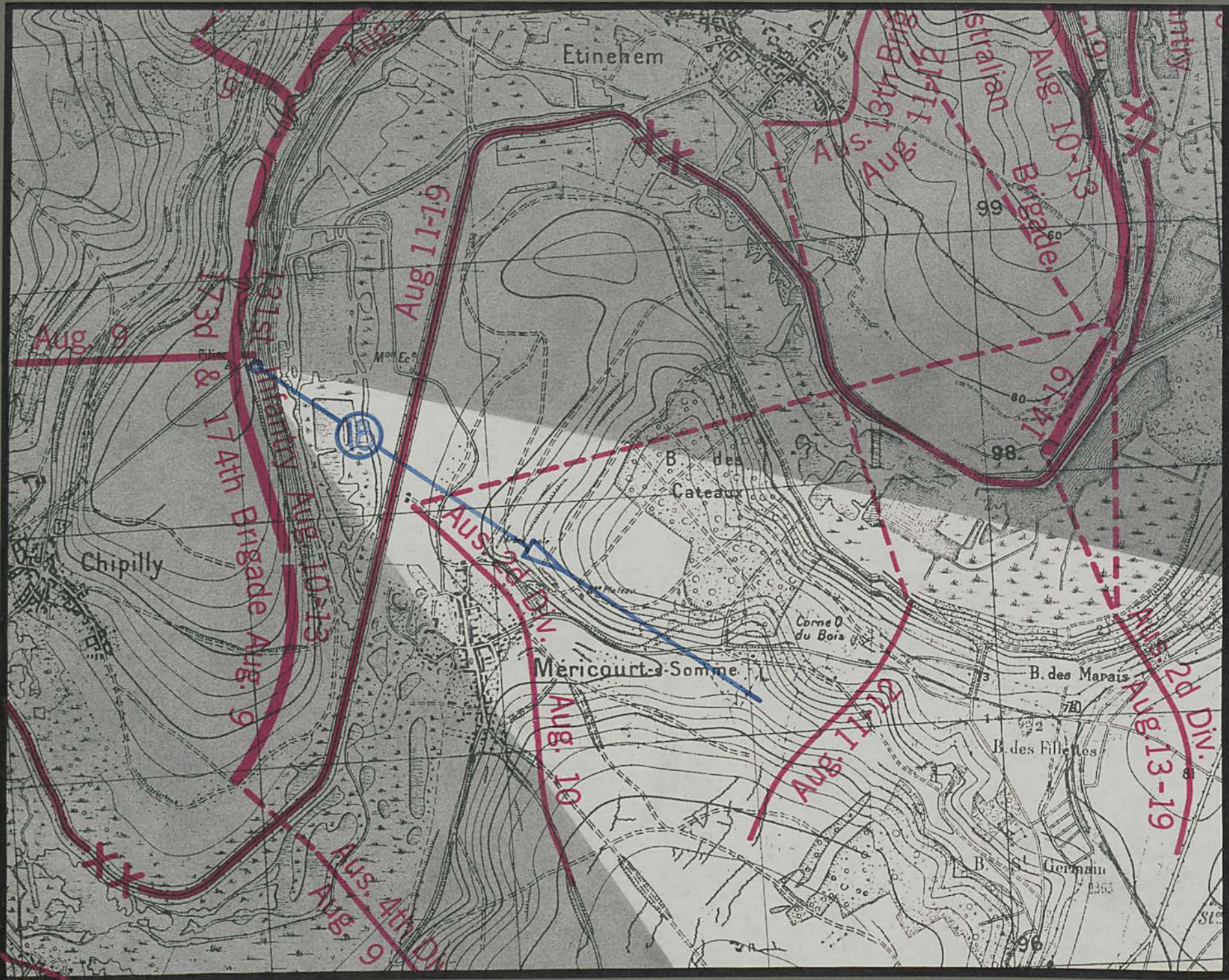
4.87-8.63

Chipilly - Morlancourt road



Gressaire Wood









Etinchem

Canal

Somme R.

Bridge at 6-8-8-6

B. des Coteaux

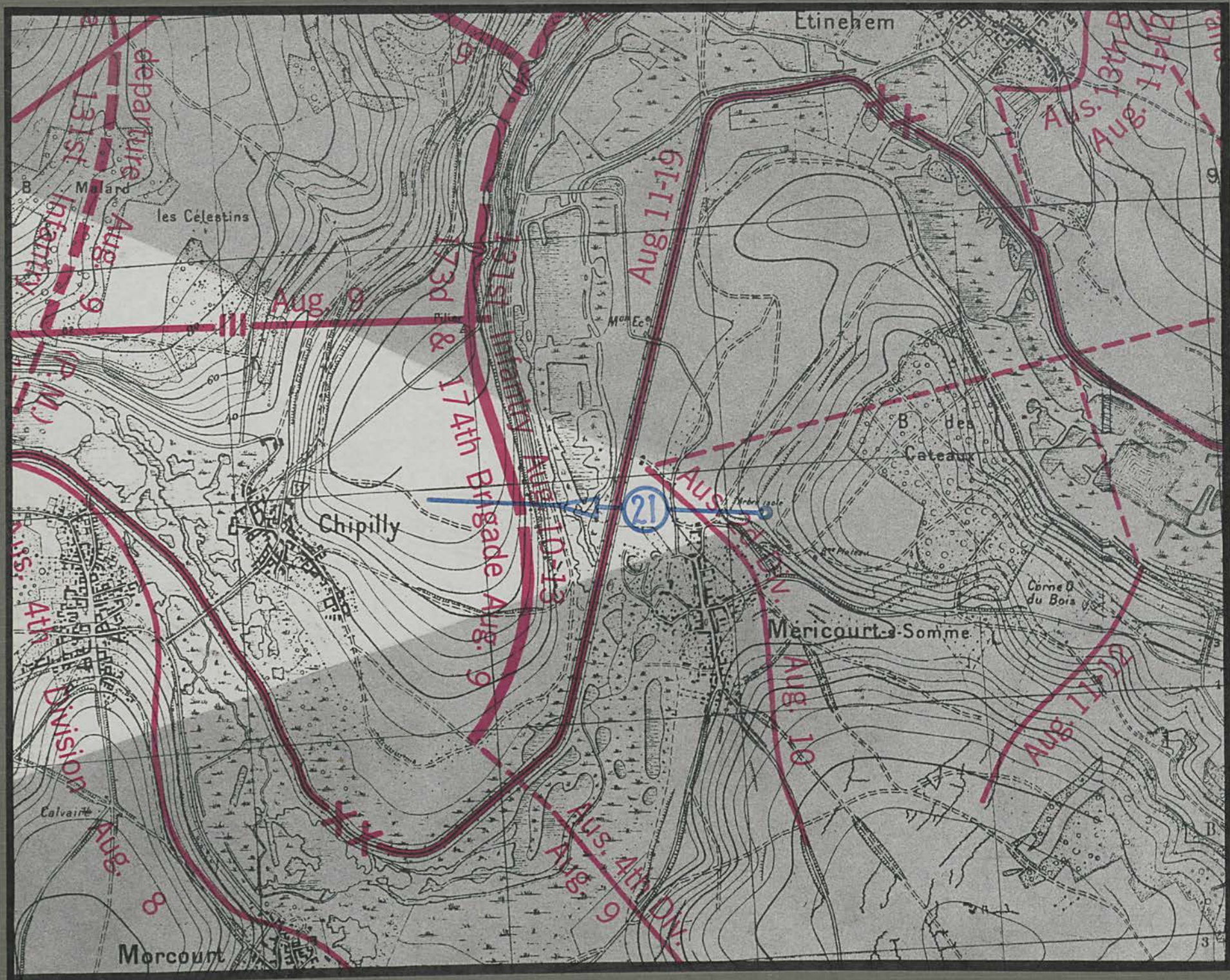
Gressaire Wood

B. Fromion

Chipilly-Etinéhem road

Somme R.







road to Méricourt ←

Canal

Chipilly Ridge

Somme R.

Somme R.

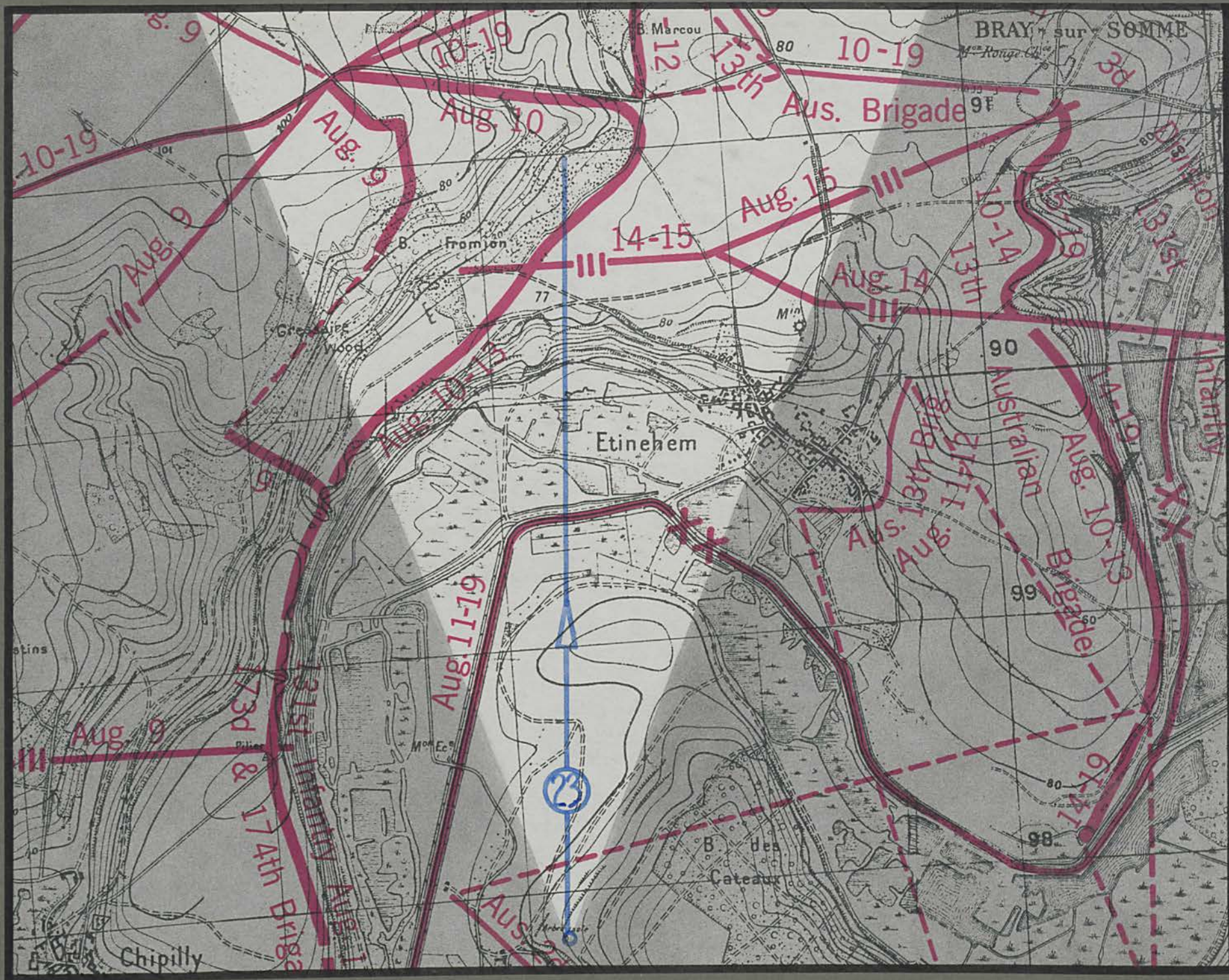
Chipilly Ridge 6-0-8-6 road to Méricourt ← Chipilly - Etinéhém road

Canal

Bridge at 6-8-8-6

Gressaire Wood





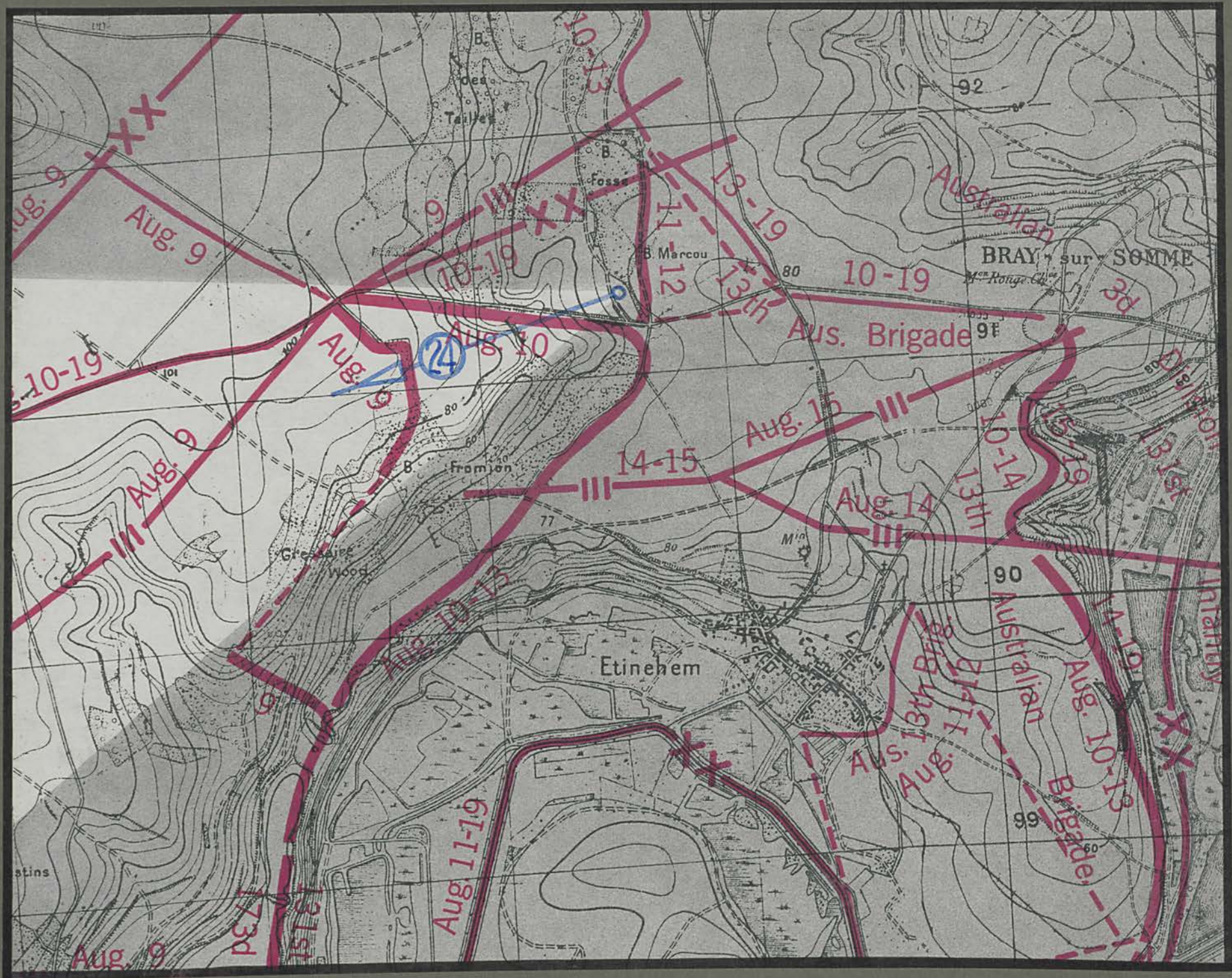


Gressaire Wood

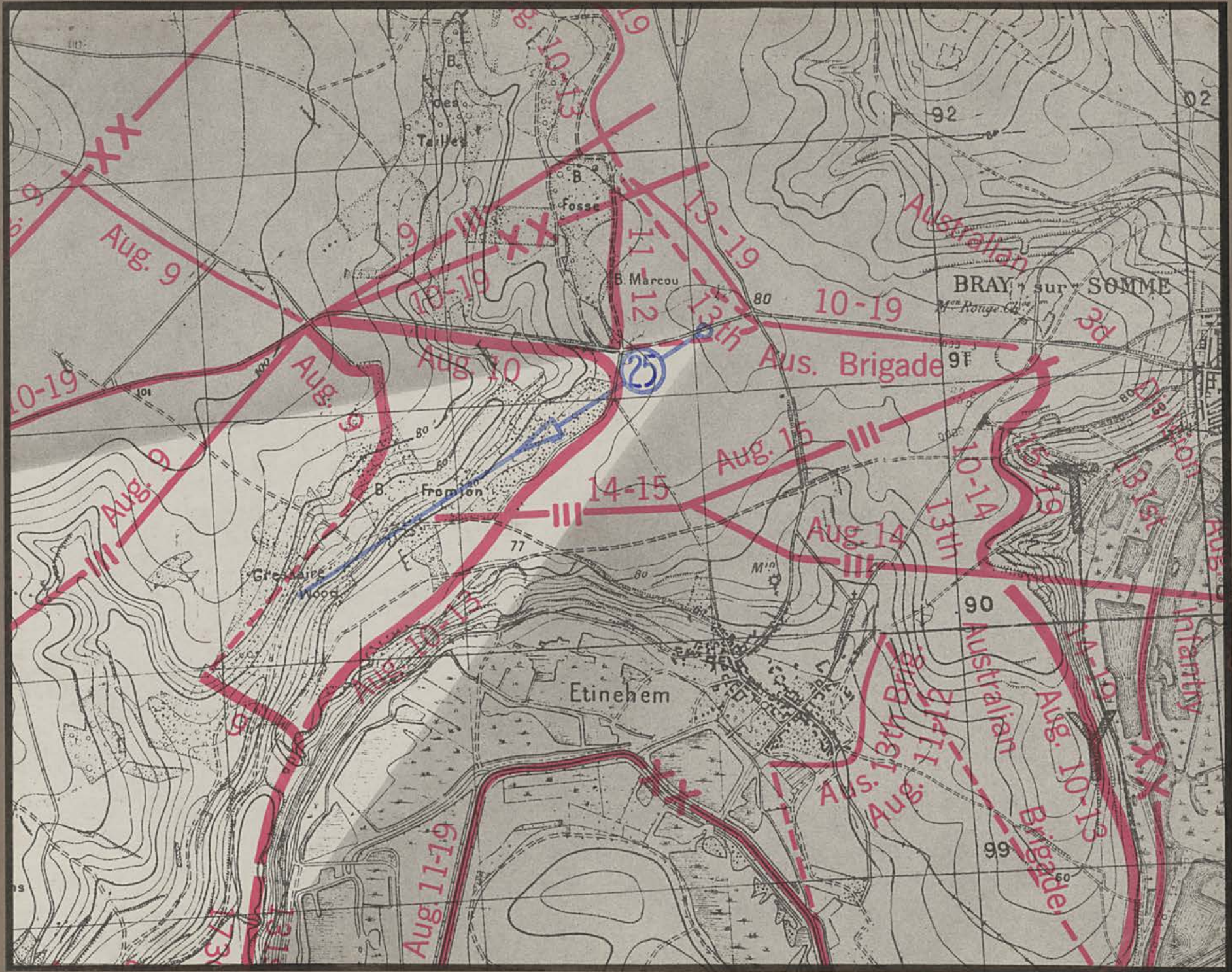
Somme R. and Canal

B. Fromion

Etinchem





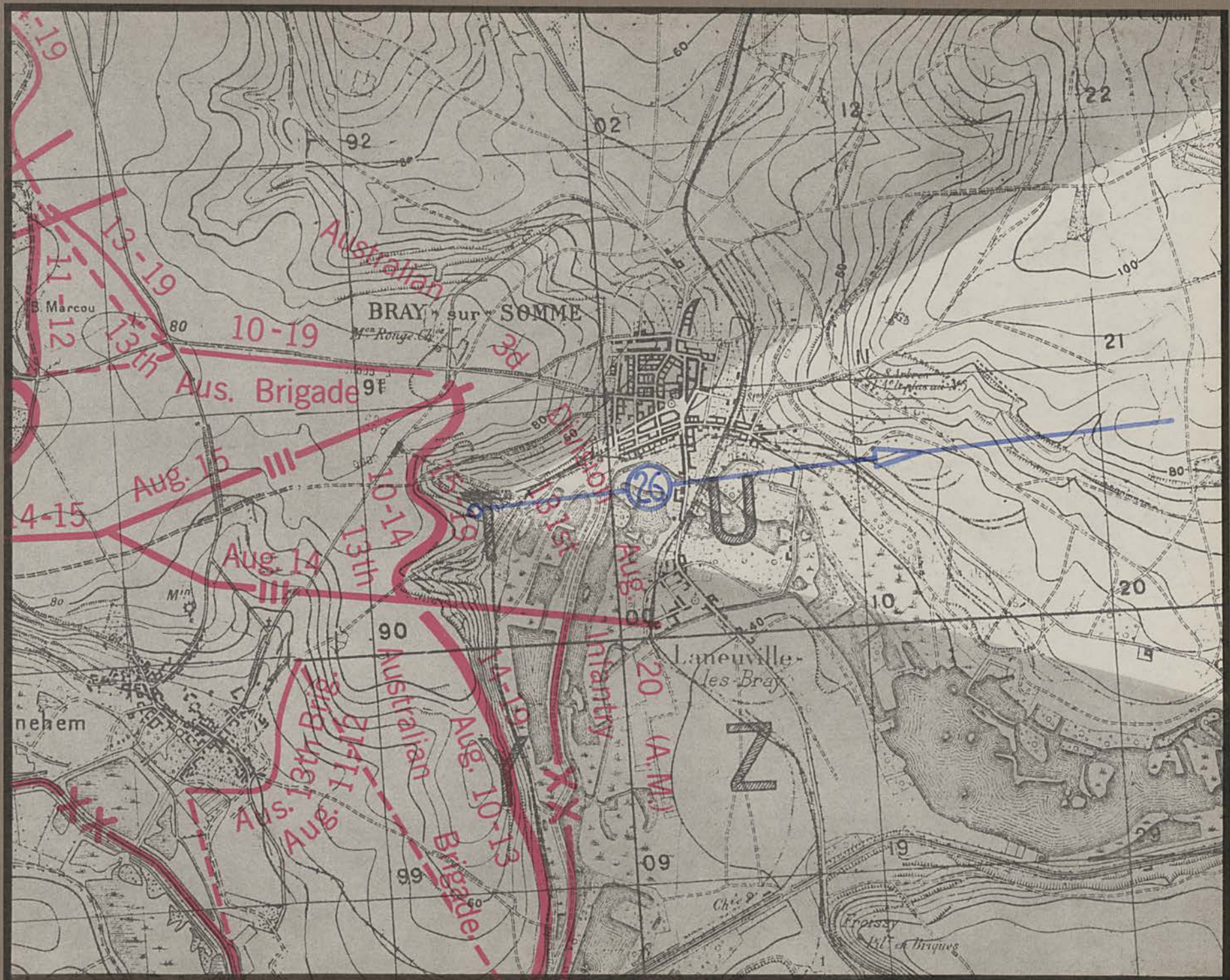


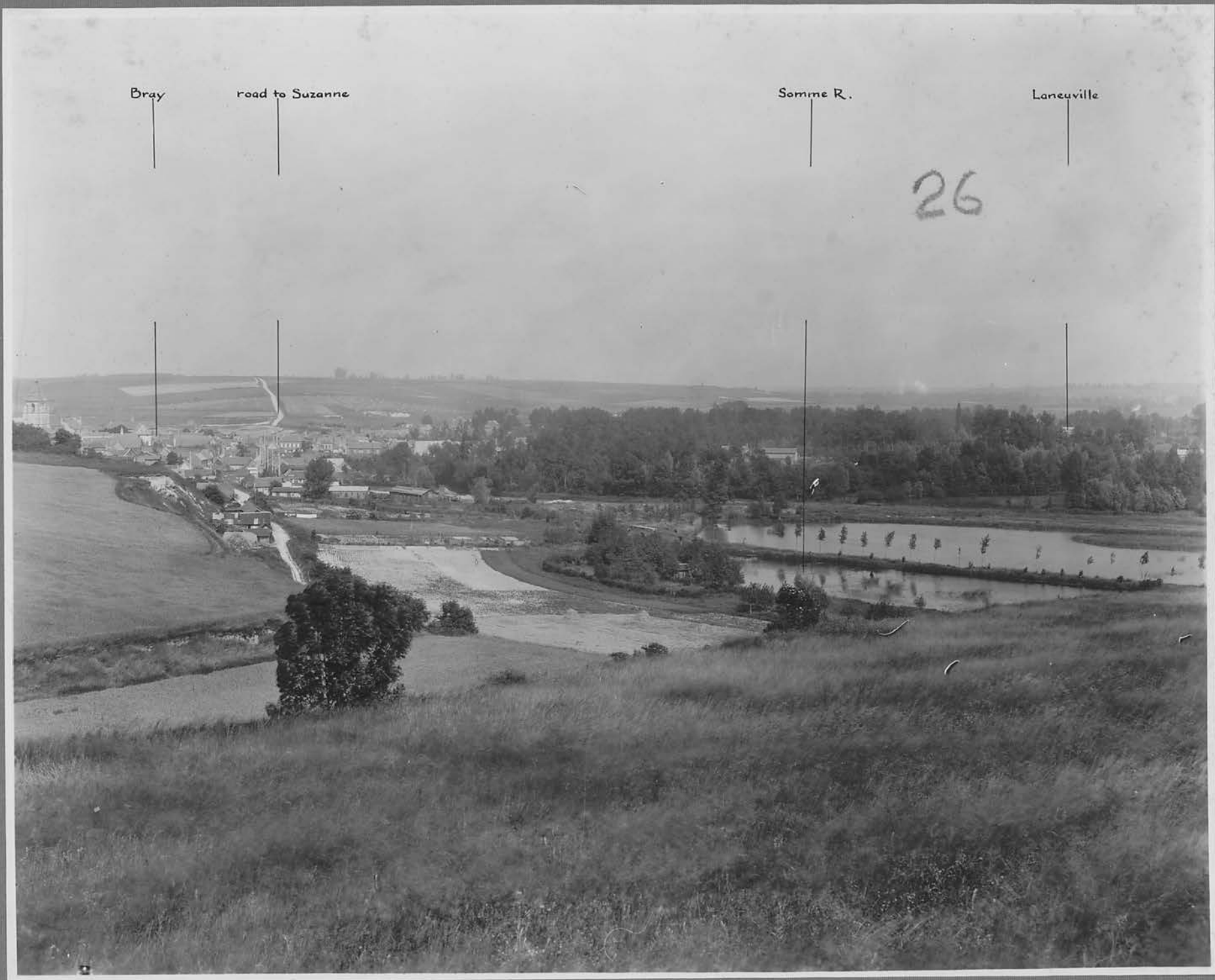


Gressaire Wood

B. Fromion

Bray-Corbie road





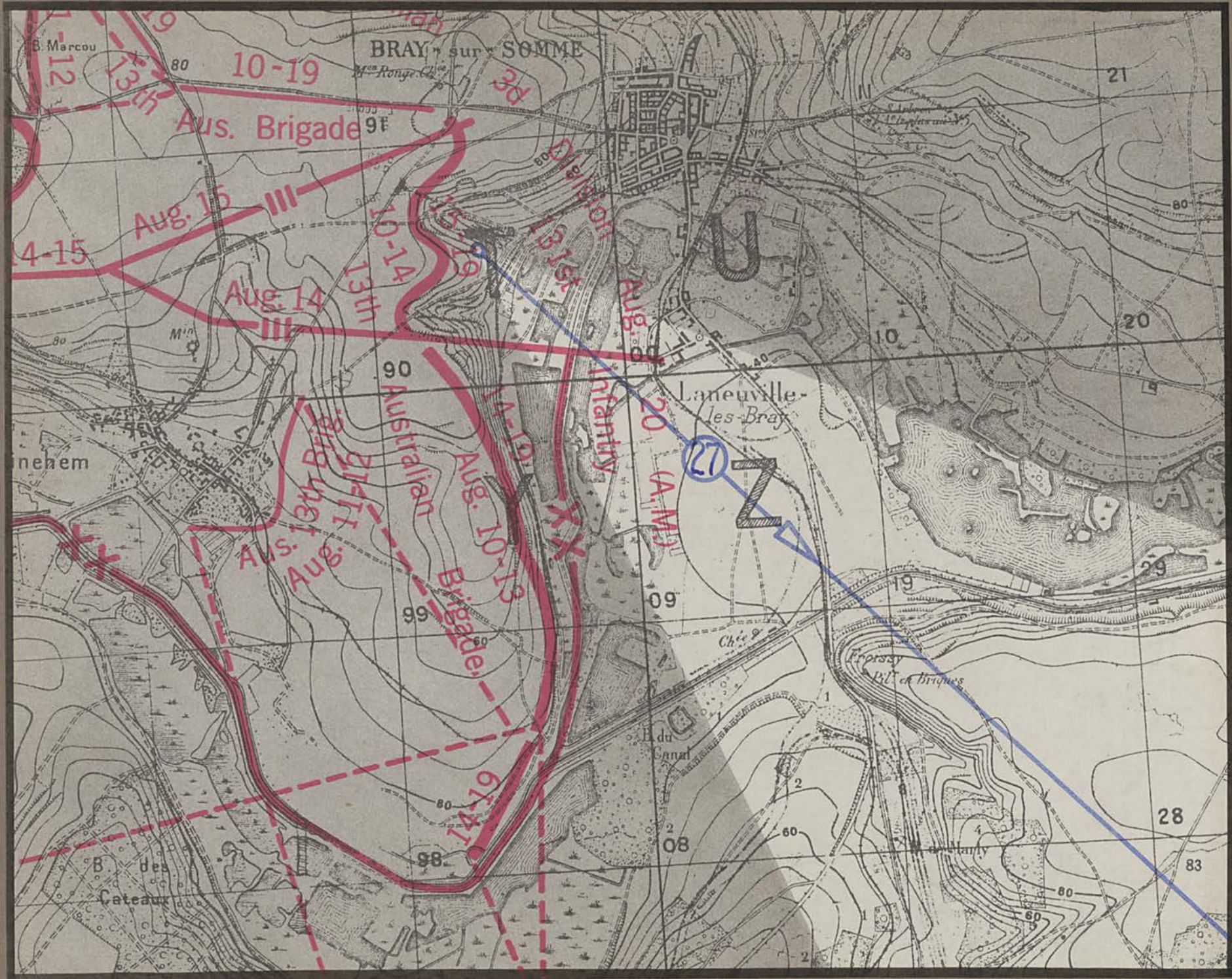
Bray

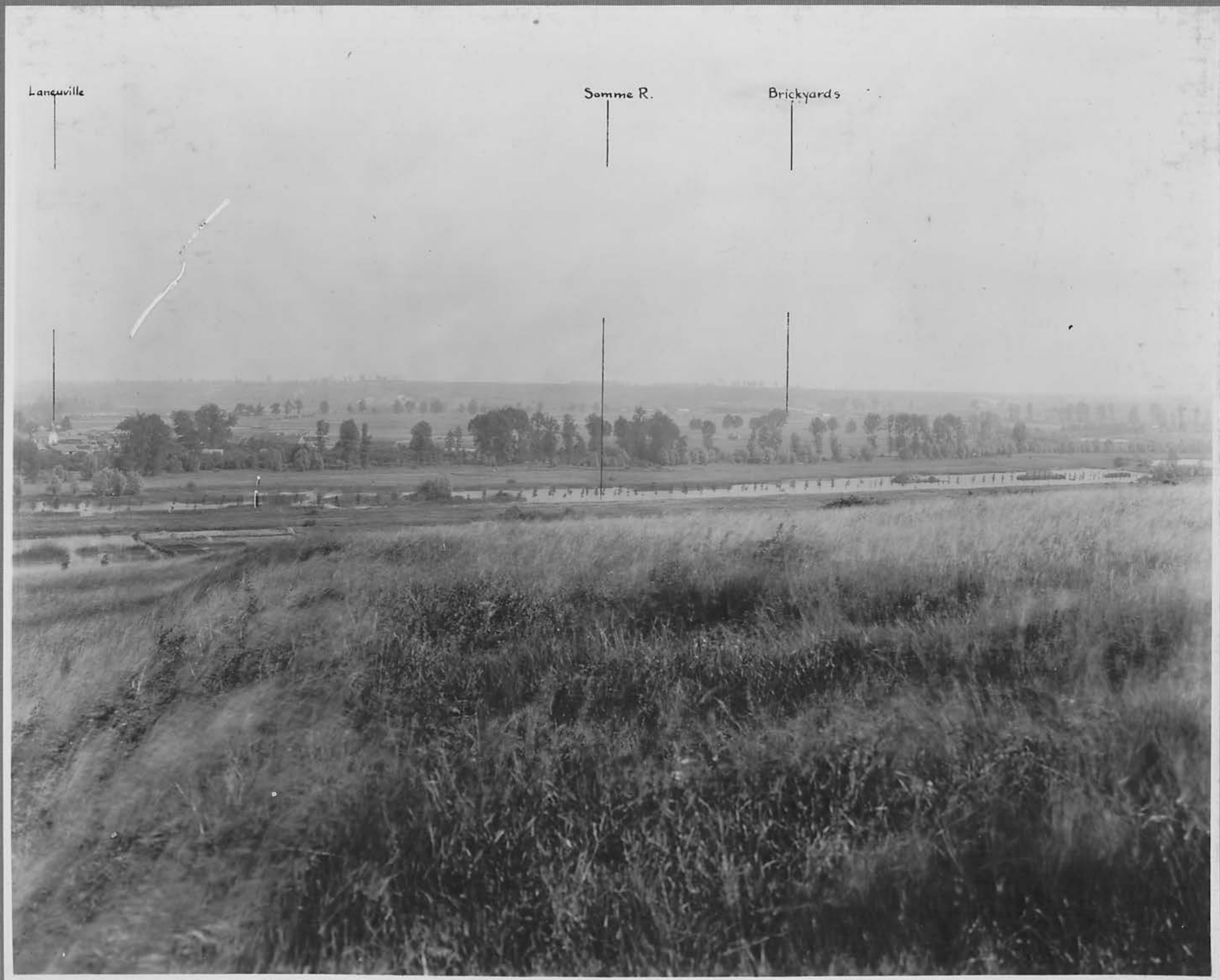
road to Suzanne

Somme R.

Laneville

26





COMMA SCHOOL

COMBINED ARMS RESEARCH LIBRARY
FORT LEAVENWORTH, KS



3 1695 00464 6311

1. Books, pamphlets, and periodicals must be charged at the loan desk (signature on book-loan card) before being taken from the library.
2. Any item drawn from the Library must be returned within one month.

Exceptions to this regulation are as follows:

- (1) Material issued to classes as a whole.
- (2) Material issued to instructors for professional use.
- (3) New books which are in demand must be returned within one week.
- (4) Books required for faculty use are subject to recall at any time.
- (5) All persons having library material in their possession will return same before leaving the post permanently.
- (6) Books loaned outside the School must be returned within two weeks.

3. Reference books and current periodicals will not be removed from the Library.

69802



LIBRARY
COMMAND
AND
STAFF
COLLEGE

69831

33RD DIVISION
CAPTURE OF HAMEL

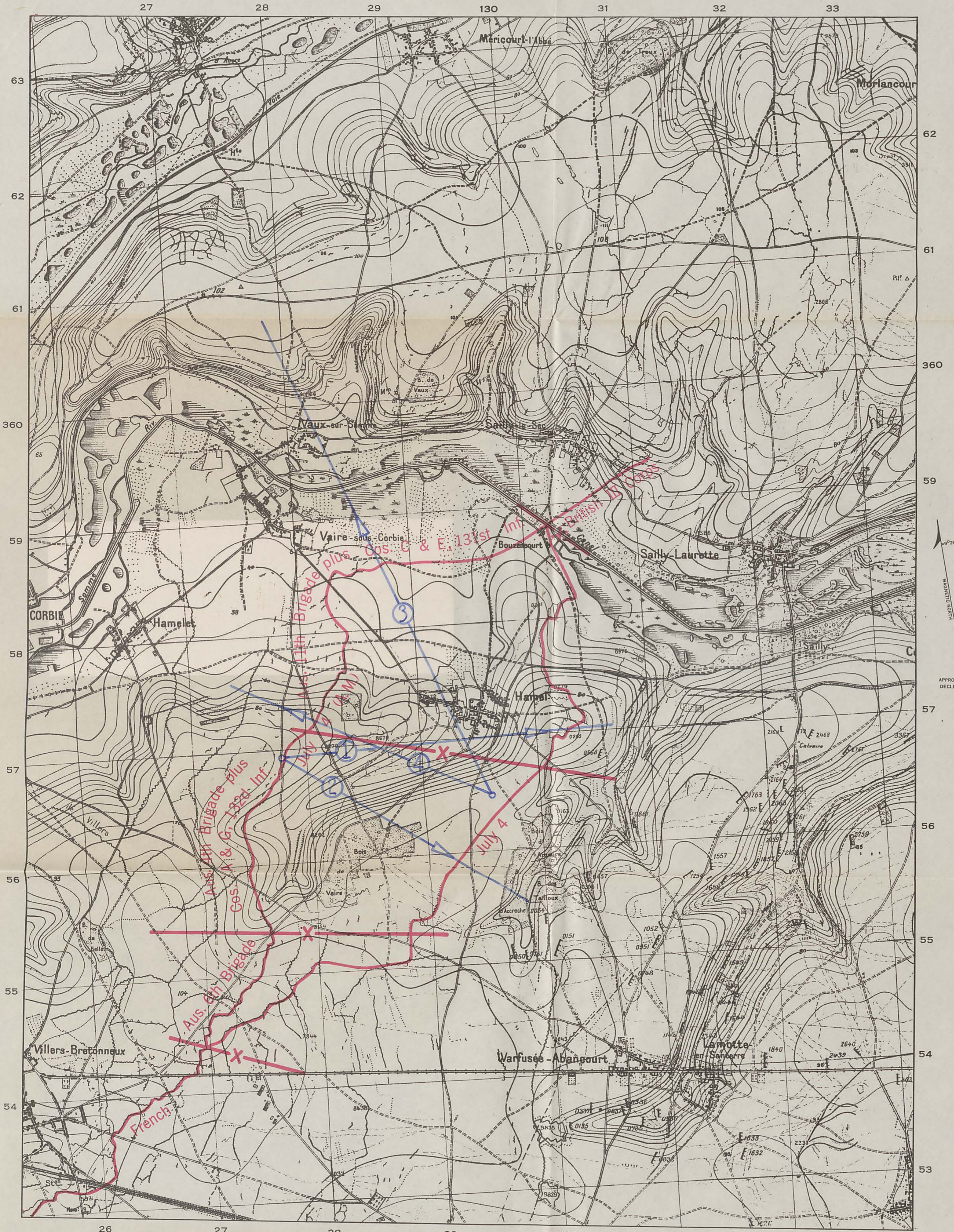
JULY 4, 1918

LIBRARY
COLL
SER
COLL

33D DIVISION CAPTURE OF HAMEL, JULY 4, 1918

AMERICAN BATTLE MONUMENTS COMMISSION

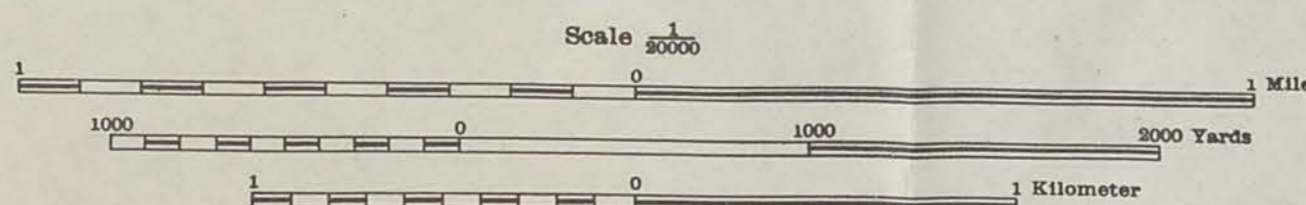
FRANCE



Compiled by American Battle Monuments Commission, 1938.

ENGINEER REPRODUCTION PLANT, U. S. ARMY, FORT HUMPHREYS, D. C. 12746
1938

All front lines are as of midnight for dates given unless otherwise noted; for example, "July 4" on a line indicates the line held at 12:00 midnight, the night of July 4/5. Lines include results of research of the American Battle Monument Commission to 1938.



Contour Interval 5 meters

Front Lines
Brigade Boundary



LEGEND

- National Highway (Route Nationale)
- Road (First Class)
- Road (Second Class)
- Road (Third Class)
- Road (Poor)
- Trail
- Quarry
- Ferme (Fme)
- Moulin (Min)
- Bois (B.)
- Côte
- Chau

69607

33RD DIVISION
SOMME OFFENSIVE

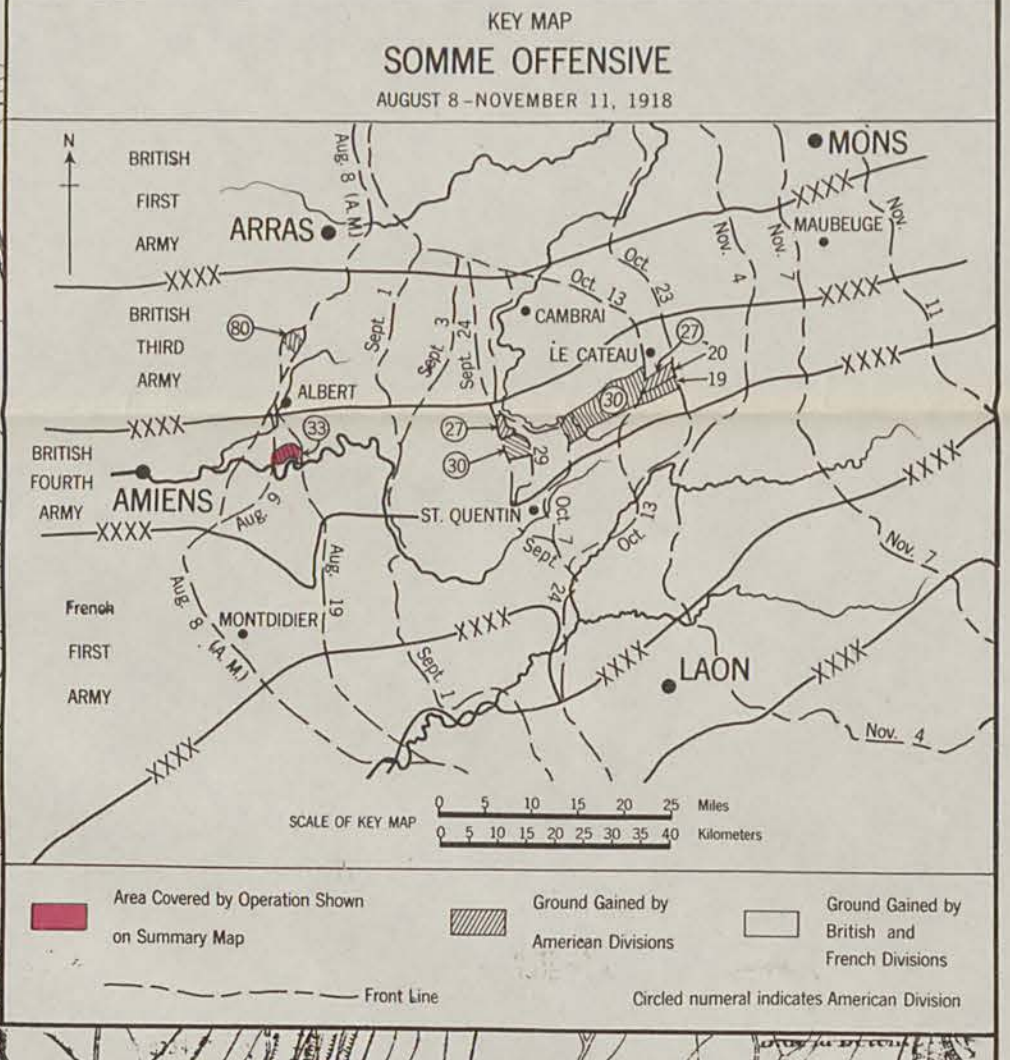
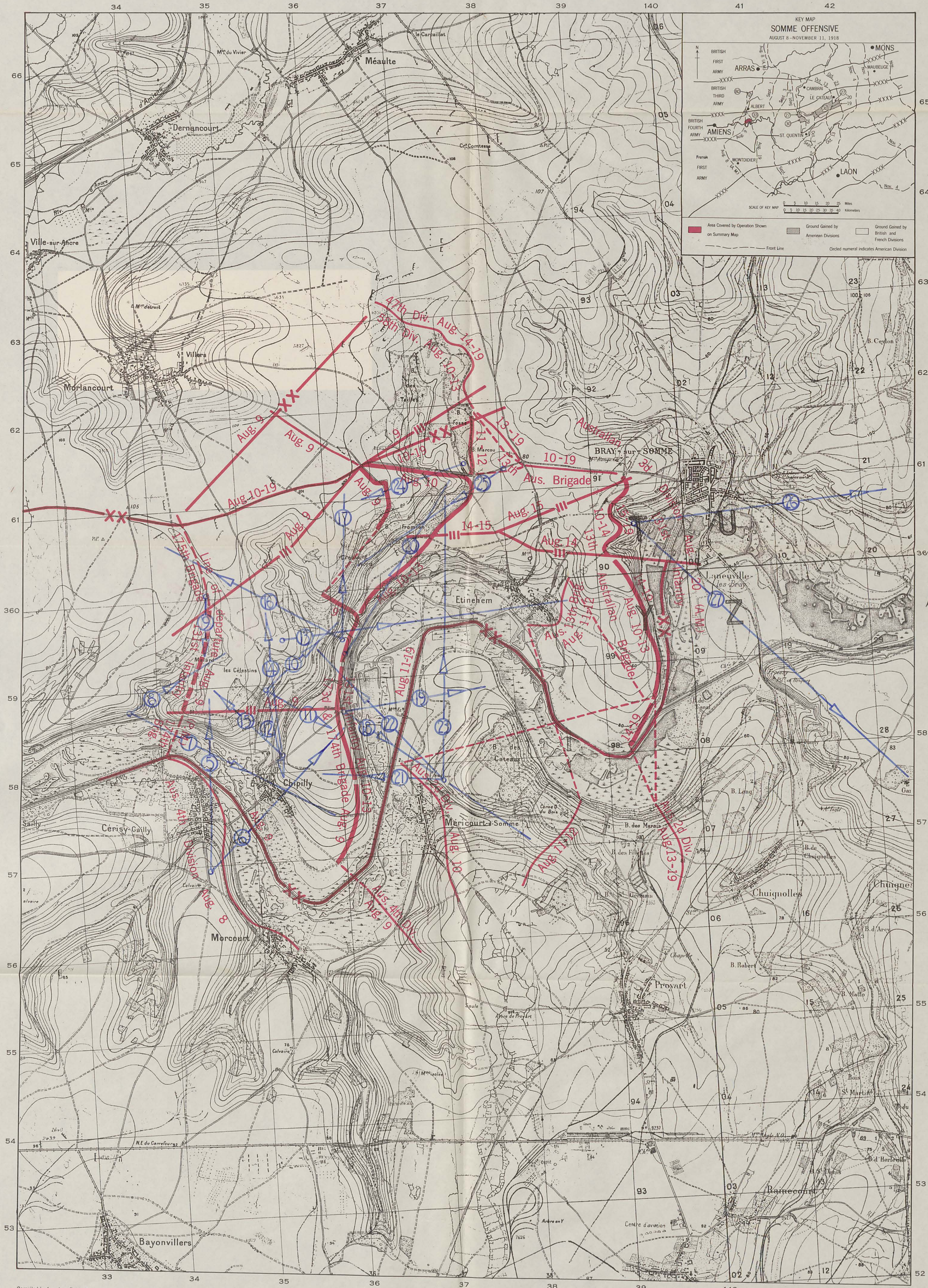
AUGUST 8-20, 1918

LIBRARY
SOMME
OFFENSIVE
AUGUST 8-20, 1918

33D DIVISION SOMME OFFENSIVE, AUGUST 8-20, 1918

AMERICAN BATTLE MONUMENTS COMMISSION

FRANCE



Compiled by American Battle Monuments Commission, 1938.

Scale 1:20,000
1 Mile / 1 Kilometer

Contour Interval 5 meters

Legend:

Front Lines held by 33d Division		National Highway (Route Nationale)		Quarry	
Front Lines held by Flank Divisions		Road (First Class)		Ferme (Fme) = Farm	
Gap in Front Lines		Road (Second Class)		Moulin (Mln) = Mill	
Division Boundary		Road (Third Class)		Bois (B.) = Woods	
Regimental Boundary		Road (Poor)		Côte = Hill	
		Trail		Château = Château	

All front lines are as of midnight for dates given unless otherwise noted; for example, "August 9" on a line indicates the line held at 12:00 midnight, the night of August 9/10, whereas "August 10-12" on a line indicates that the line was located at the same place at midnight on the nights of August 10th, 11th and 12th. Dates on boundaries indicate dates when boundaries were actually in force. See accompanying Summary of Operations for dates when boundaries were ordered. Lines include results of research of the American Battle Monuments Commission to 1938.

