

TERRAIN PHOTOGRAPHS
AMERICAN WORLD WAR BATTLEFIELDS
IN EUROPE

91ST DIVISION

AUBREVILLE SECTOR

SEPTEMBER 19-25, 1918

MEUSE-ARGONNE OFFENSIVE

SEPTEMBER 26-OCTOBER 7, 1918

PREPARED BY
THE AMERICAN BATTLE MONUMENTS
COMMISSION

THE COMMAND AND STAFF COLLEGE
LIBRARY



Class Symbol M 9403-H6-C-73-G3-C91

Accession Number N 69629

PREFACE

THIS album is part of a collection of photographs of the various battlefields in Europe upon which the Armed Forces of the United States were actively engaged during World War I.

These terrain photographs were taken and prepared by the American Battle Monuments Commission, as provided in the act of Congress of March 4, 1923, to complete the historical record of the operations of the American units. The series comprises 69 albums containing 1,396 photographs.

The contents of these albums will be of particular value when studied in conjunction with the Summaries of Operations, prepared by the American Battle Monuments Commission, which relate in detail the combat services of each American division.

On the page preceding the photographs will be found a small-scale key map showing the general operation of which this divisional operation was a part. In the pocket inside the back cover will be found a reprint of a 1:20,000 map, of the type used during the war, showing the operation covered by the photographs in this

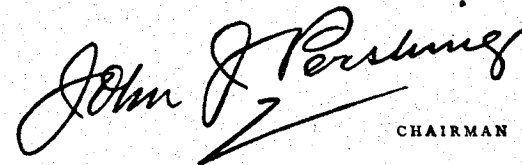
album. On this index map have been indicated the position of the camera and the direction in which it was sighted in taking each photograph.

On the page opposite each photograph is a section of the 1:20,000 map of the terrain in the vicinity of that pertaining to the photograph. The white wedge-shaped portion of the map indicates the sector of terrain which actually appears in the picture. The plotted position of the camera and the axis of the picture are shown in blue, the length of the blue line approximately indicating the depth of the view. The circled number corresponds to the number of the photograph, of which the numerals before the dash indicate the division and the numerals after the dash indicate the serial number of the photograph in this division.

Various topographical features visible in the photographs have been indicated by name to facilitate orientation.

Complete sets of these albums have been deposited with the National Archives, the Library of Congress, the Historical Division of the War Department General Staff, and the Command and Staff College.

AMERICAN BATTLE MONUMENTS COMMISSION,


CHAIRMAN

NOV 22 1946

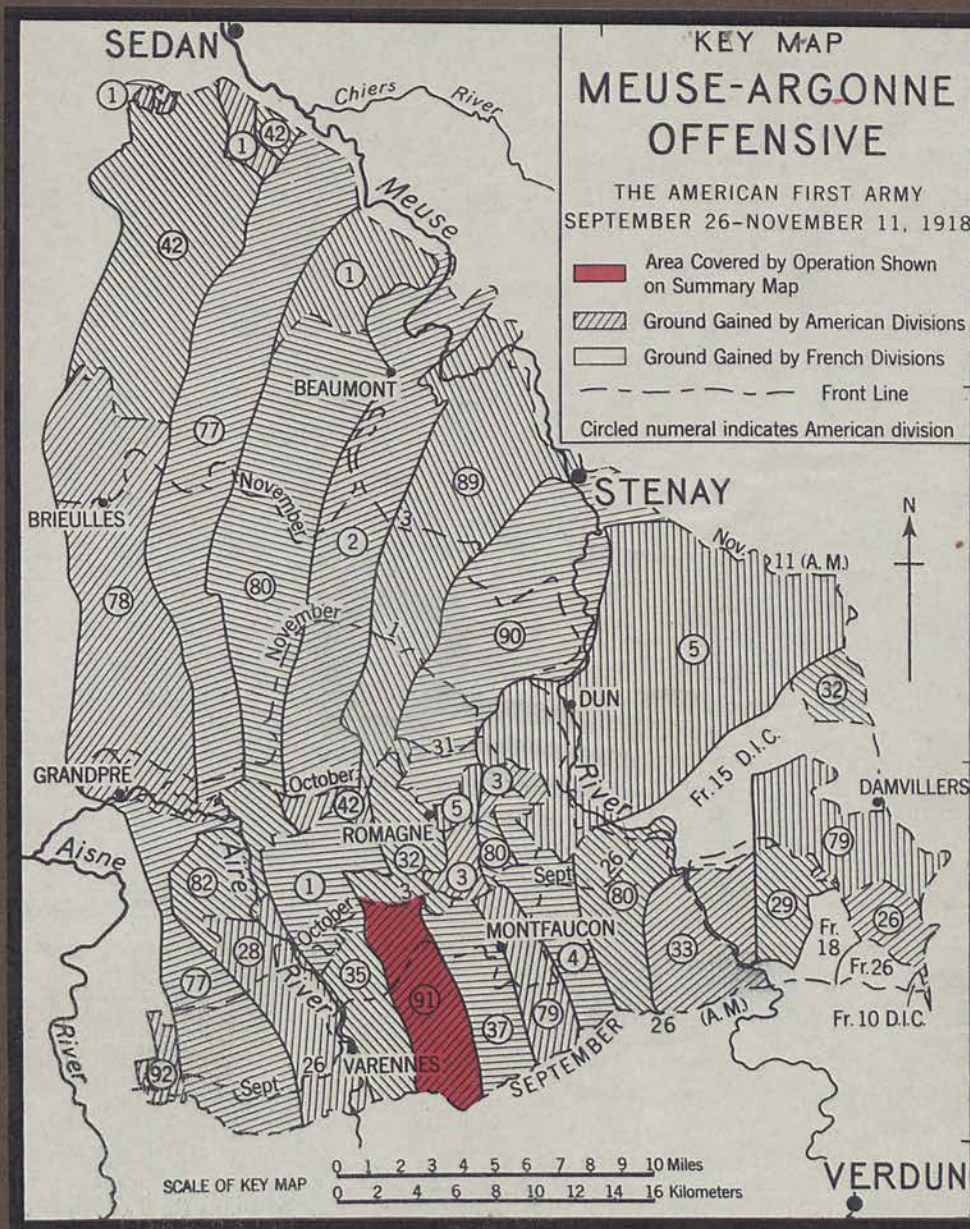
91ST DIVISION

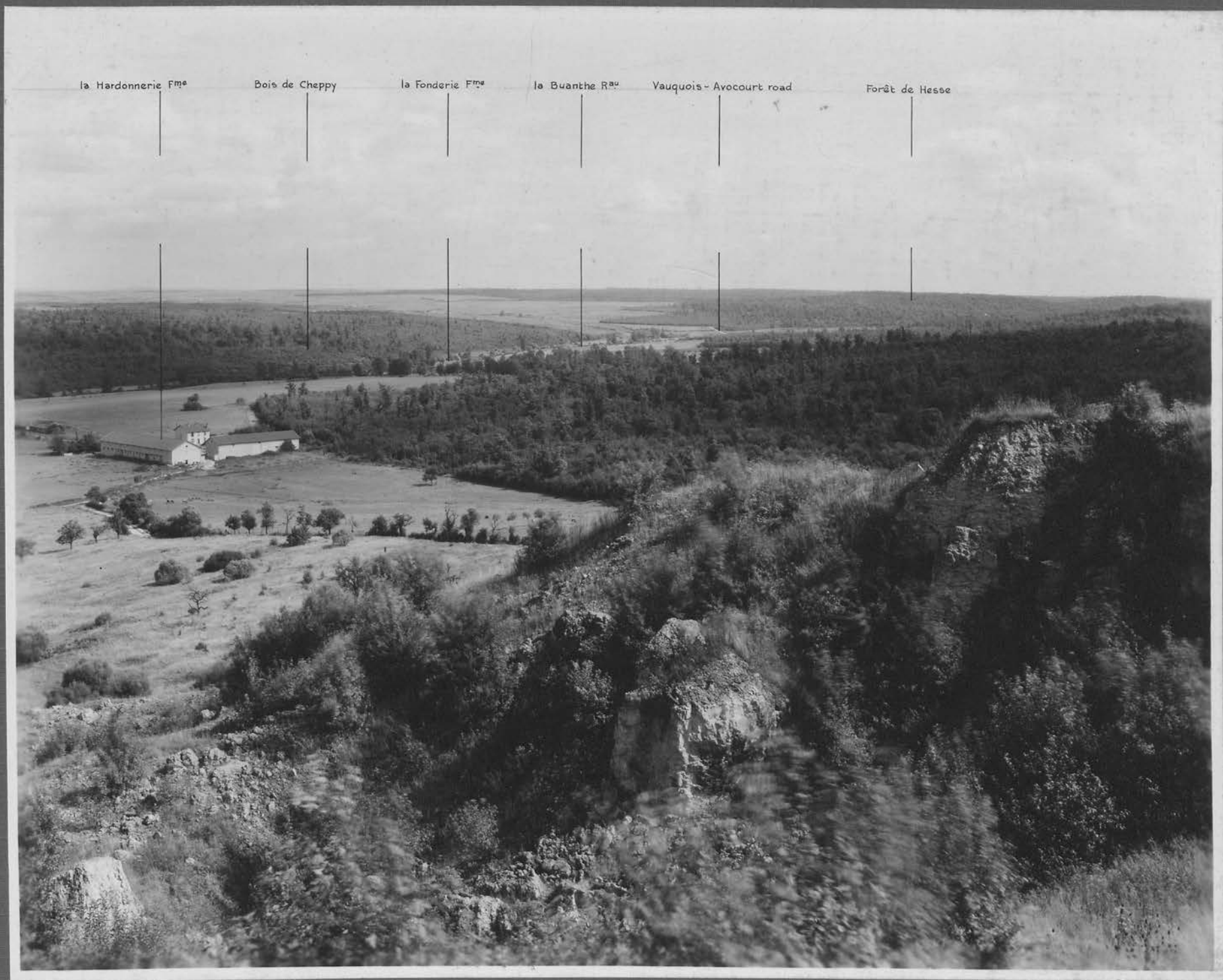
AUBREVILLE SECTOR

SEPTEMBER 19-25, 1918

MEUSE-ARGONNE OFFENSIVE

SEPTEMBER 26—OCTOBER 7, 1918







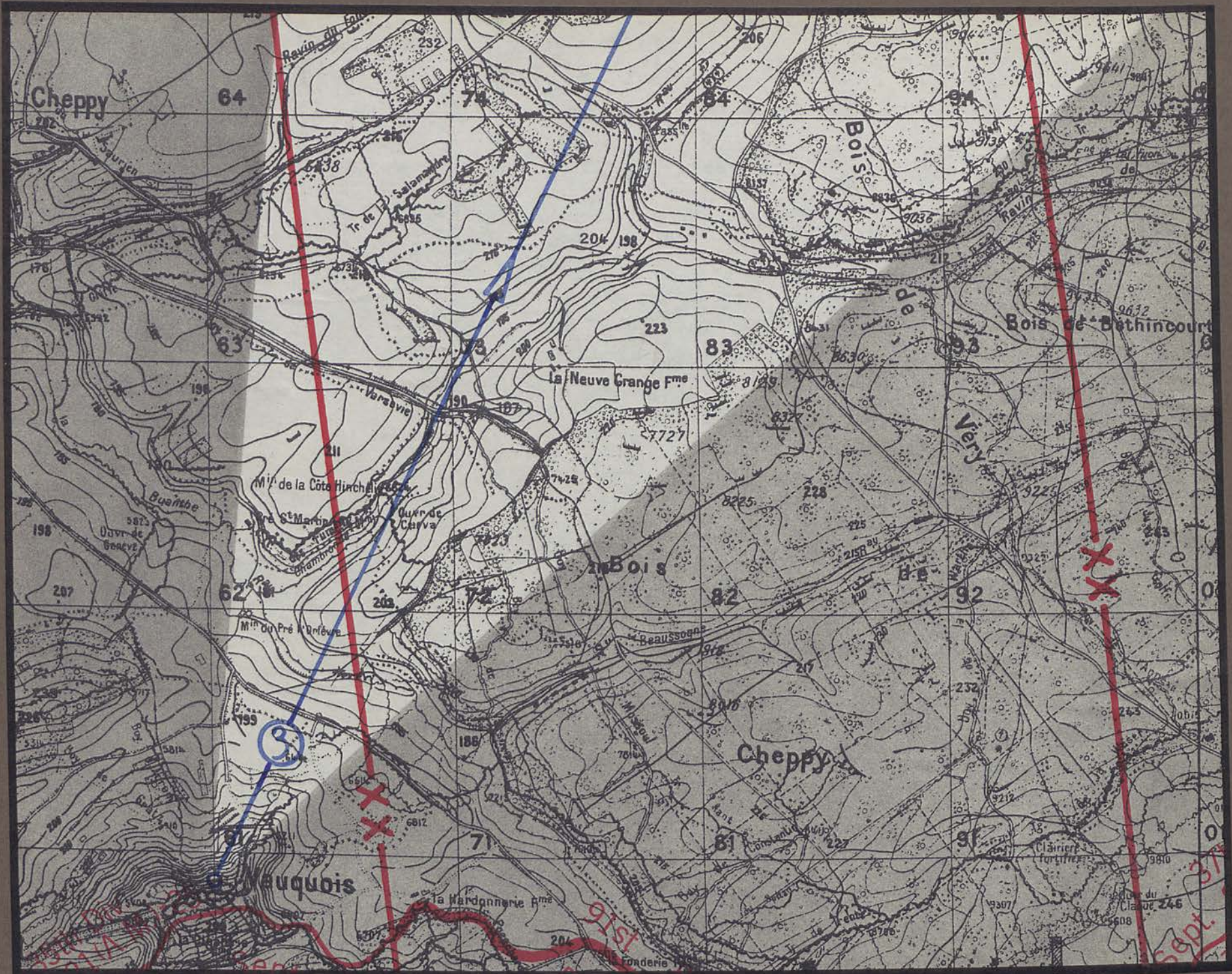
Bois de Véry

Bois de Cheppy

road to Vauquois

Varennes - Avocourt road

trail to la Hardonnerie Fme

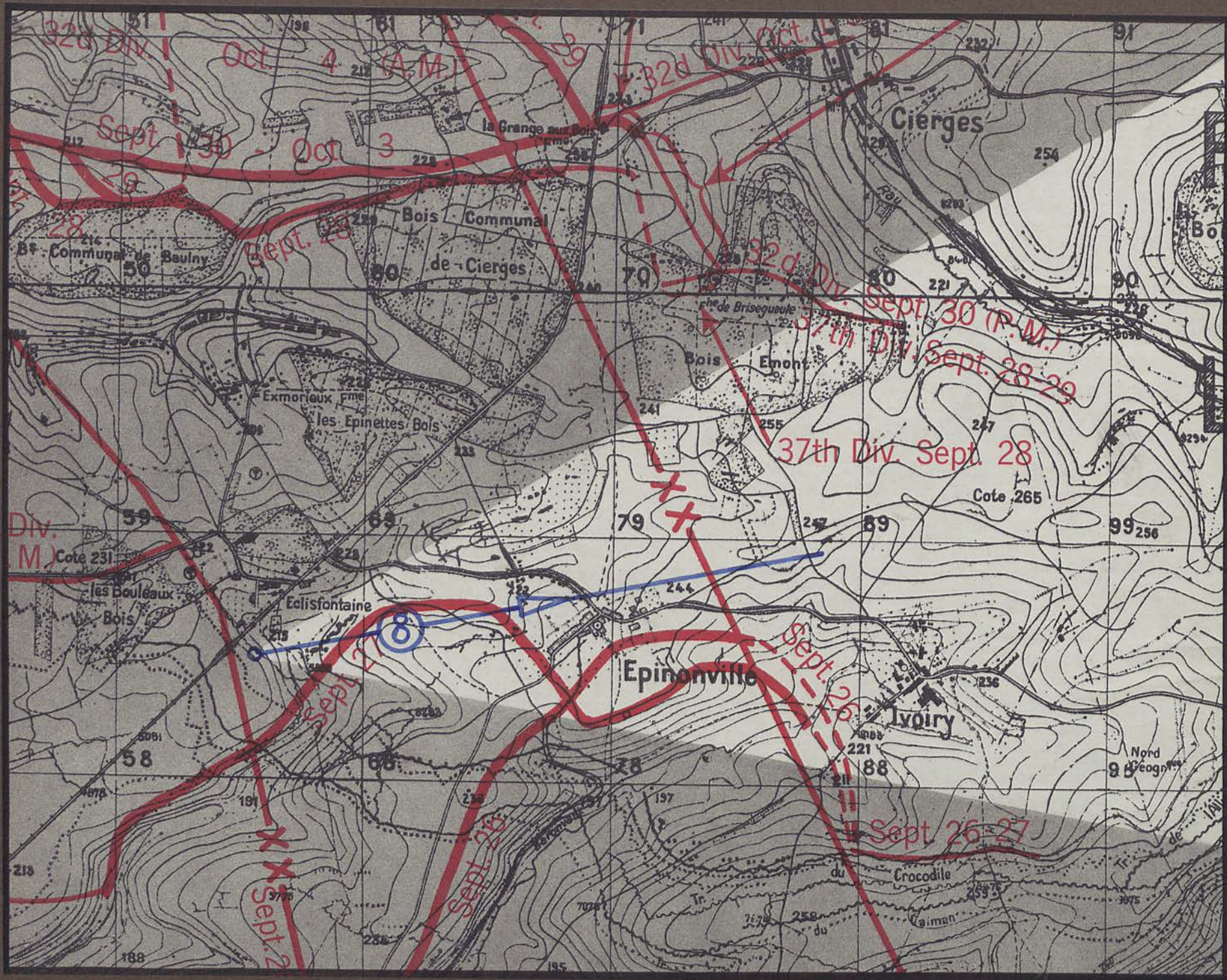






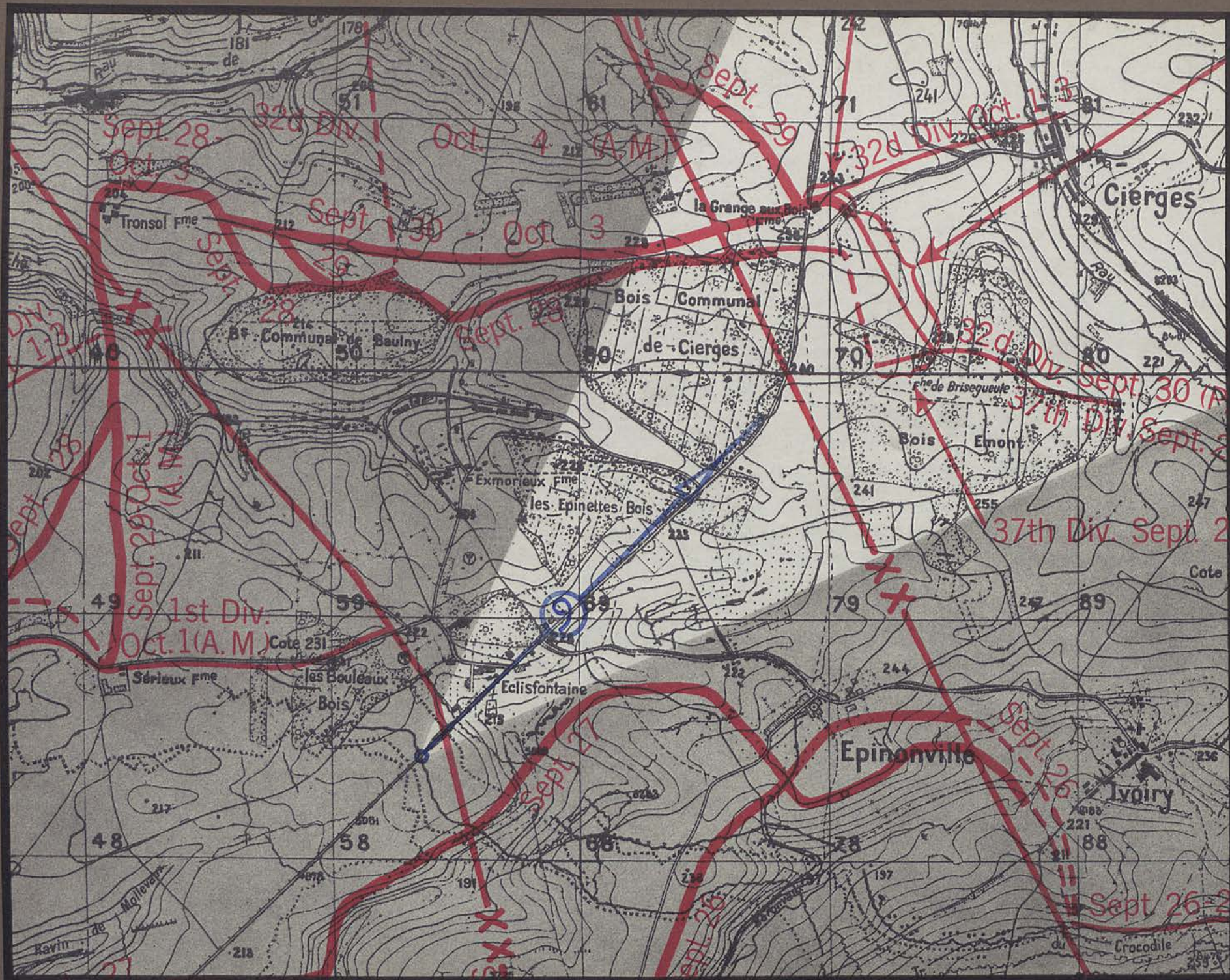








Epinoville





Eclisfontaine

Charpentry - Romagne road

la Côte Dame Marie

B⁵ Communal de Baulny

B⁵ Communal de Clerges

Exmorieux F⁵

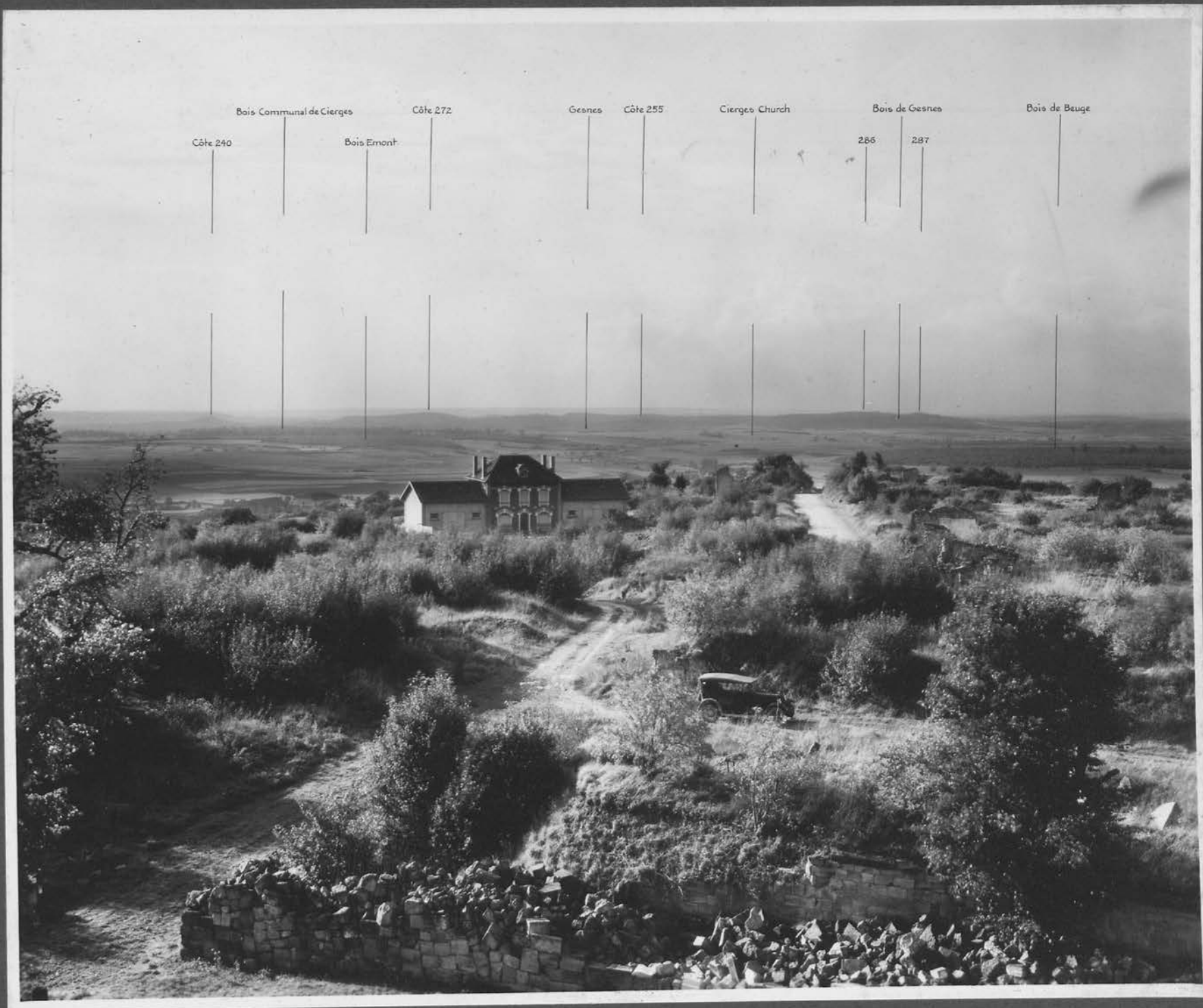
les Epinettes Bois

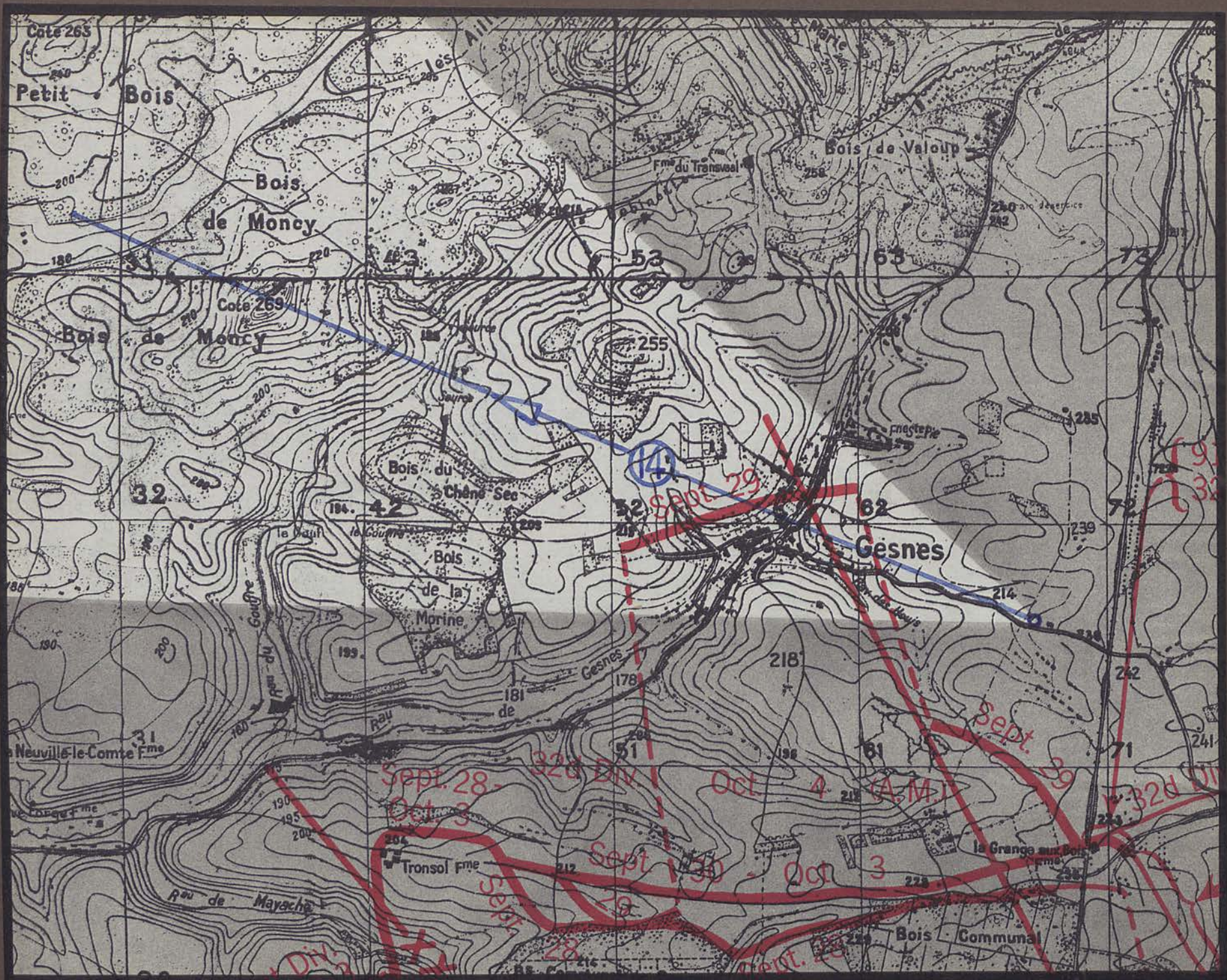


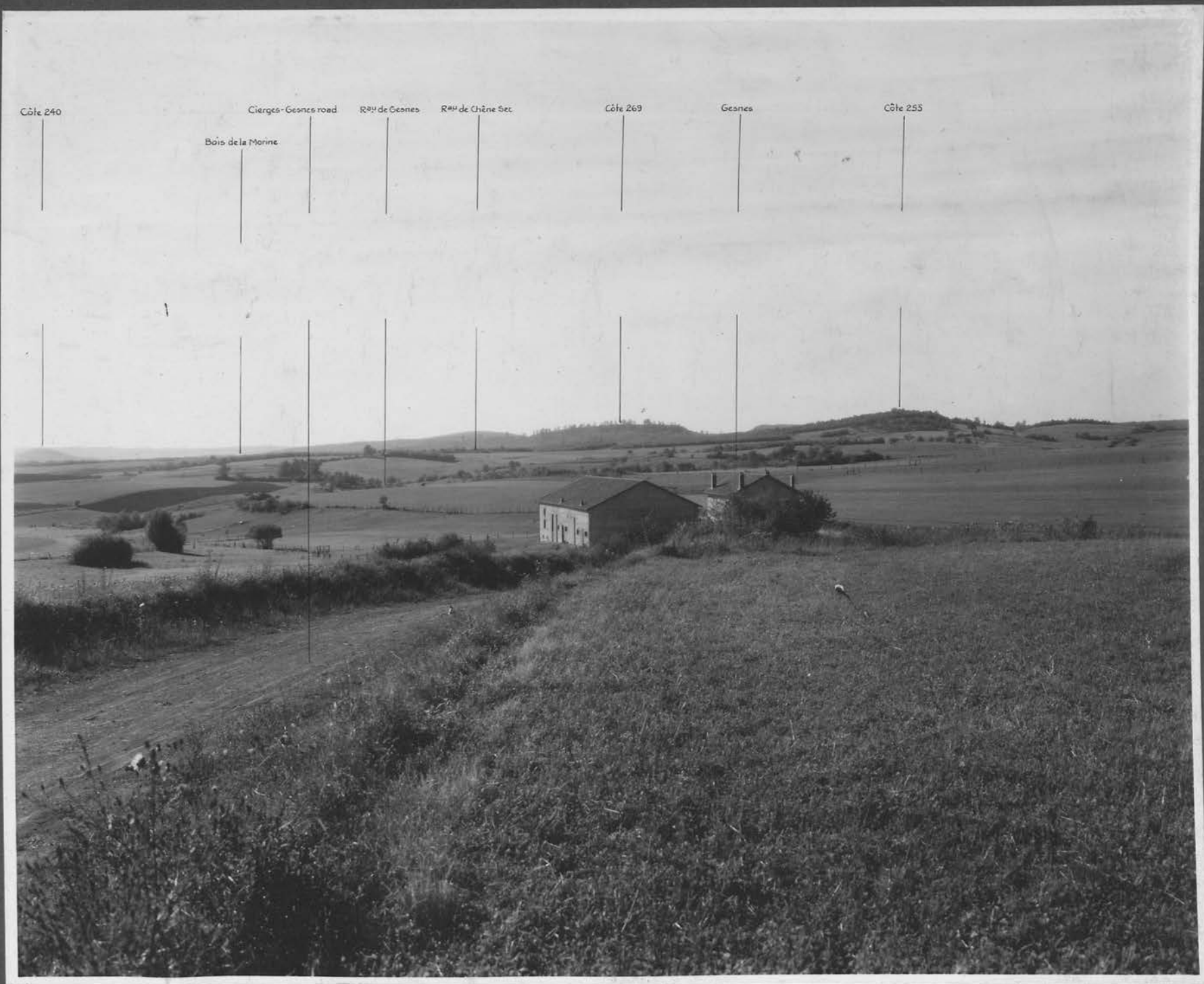












COMMAND AND GENERAL STAFF SCHOOL

COMBINED ARMS RESEARCH LIBRARY
FORT LEAVENWORTH, KS



3 1695 00464 6386

1. Books, pamphlets, and periodicals must be charged at the loan desk (signature on book-loan card) before being taken from the library.

2. Any item drawn from the Library must be returned within one month.

Exceptions to this regulation are as follows:

- (1) Material issued to classes as a whole.
- (2) Material issued to instructors for professional use.
- (3) New books which are in demand must be returned within one week.
- (4) Books required for faculty use are subject to recall at any time.
- (5) All persons having library material in their possession will return same before leaving the post permanently.
- (6) Books loaned outside the School must be returned within two weeks.

75
3. Reference books and current periodicals will not be removed from the Library.

01123

LIBRARY
COMMAND
AND
STAFF
COLLEGE

