

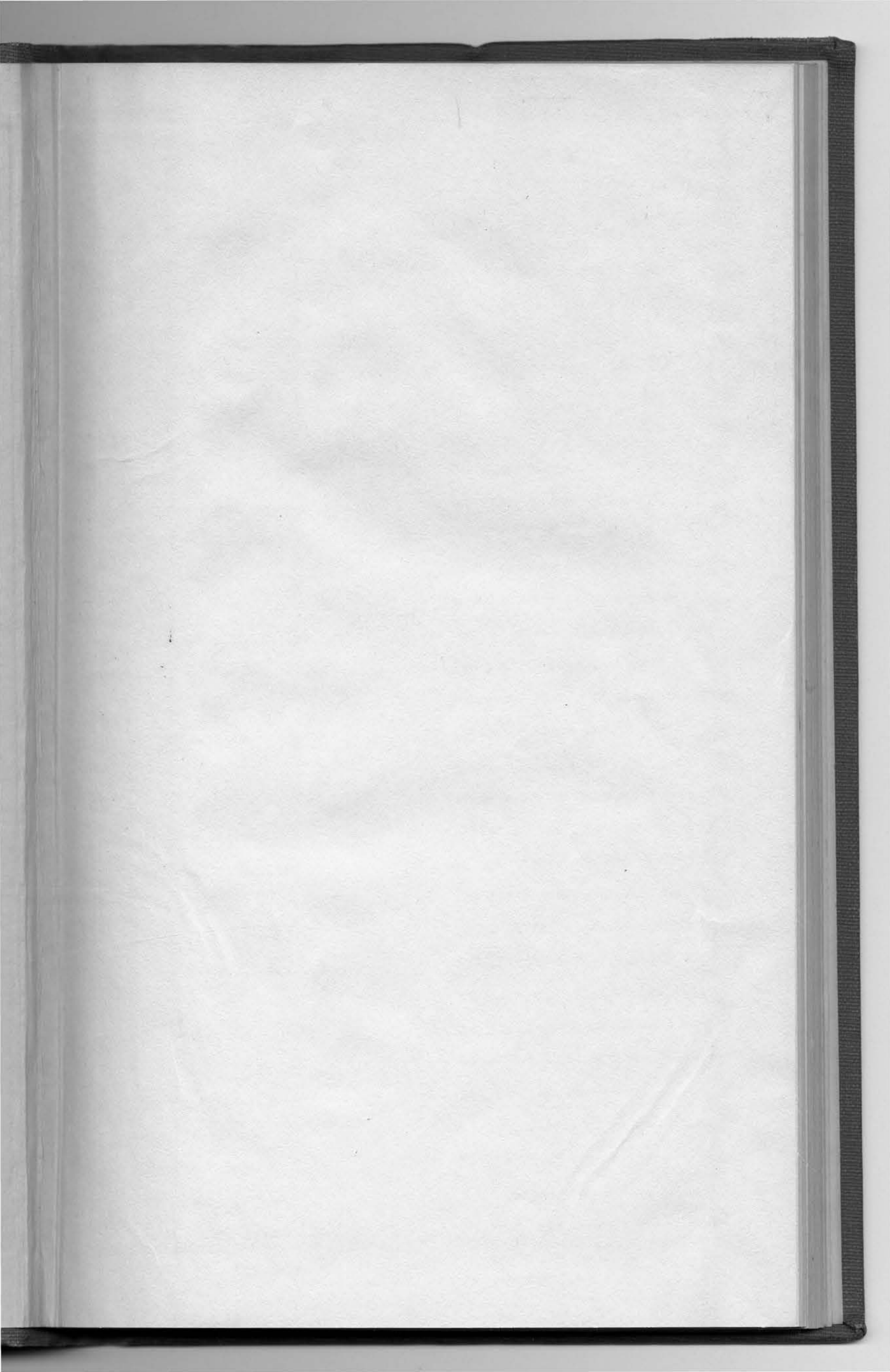
THE COMMAND AND GENERAL STAFF SCHOOL

LIBRARY



Class Symbol \*M 9403-J.44:8-U

Accession Number 51588



Classification changed to *Cancelled*  
*See Army by TAG Per*  
Authority *95 446 Civ 115-49*  
By *C.R. Fuller*

(1)

Field Order

No. 18.

P.C. 3rd Army Corps, A.E.F.

21 September 1918 - 9 Hour.

VERDUN-MEZIERES 1:80,000

Maps: Plan DIRECTEUR 1:20,000

SPECIAL MAP 1:80,000 attached.

Troops:

(a) Right Division:

- Maj. Gen. Bell
- 33rd Div. (less Art.)
- 52nd F.A. Brig.
- 212th F.A. (French)
- 1 bn. 308th R.A.D. (Fr.)
- 1 Air Sq. (less 1 flight)
- 1 Balloon Co.
- Co. A, 1st Gas. Regt.

1. (a) The enemy holds the front from the MEUSE to the AISNE with about five divisions. He probably holds about from the MEUSE to MALANCOURT (exclusive) with one division. Enemy's units are weak, discouraged, in poor morale, and afraid of Americans (announce above down to privates). Details of enemy positions shown on maps furnished.

(b) Center Division:

- Maj. Gen. Cronkhite
- 80th Div.
- 228th F.A. (French)
- 1 bn. 289th R.A.L. (Fr.)
- 1 Air flight
- Co. F, 1st Gas Regt.

(b) Allied Armies (1st American Army on the right; 4th French Army on the left) attack on the front MEUSE RIVER (exclusive) SUIPPE RIVER (exclusive), towards MEZIERES. Remainder of 1st American Army will continue to hold between the MEUSE and the MOSELLE.

(c) Left Division:

- Maj. Gen. Hines
- 4th Div.
- 250th F.A. (Fr.)
- 1 bn. 308th R.A.L. (Fr.)
- Troop "I", 2nd Cav.
- 1 Air Sqd.
- 1 Balloon

(c) 1st American Army:  
Right boundary of attack zone:  
The MEUSE (exclusive).  
Left boundary of attack zone:  
West edge of Foret d'ARGONNE-GRAND PRE (incl.) - CHATILLON SUR BAR (incl.)

APR 11 '32

## (d) Corps Artillery:

Brig. Gen. Gatchell  
 289th (Fr.) (less 1 Bn.)  
 407th "  
 413th "  
 81st "  
 456th "  
 1 bn. 308th (Fr.)  
 2 Air Sqds.  
 1 Balloon Co.

## (e) Tanks:

(none)

## (f) Air Service:

1 Air Squadron  
 1 Balloon Company

## (g) Reserve:

Maj. Buck  
 3rd Div.

## (h) Special troops:

See annexes.

Direction: BUZANCY- STONNE.

Objectives: See map herewith.

## Troops:

3d Corps (4 Divs.) on right  
 5th Corps (4 Divs.) in center  
 1st Corps (4 Divs.) on left  
 Reserve, 3 divs. (?)

(d) The 17th Corps, French, (part of 1st American Army) holds the VERDUN salient east of the MEUSE and assists in the neutralization of the heights held by the enemy, east of the MEUSE.

2. (a) This Corps (less 1st Div. held as Army Reserve) will break the hostile positions and resistance between the RAU DE FORGES and BOIS DE FORET, exploit its success by advancing north from BOIS DE FORET, and meantime or-

ganize the left (west) bank of the MEUSE for defense as the attack progresses northwards. The attack begins D day, H hour.

(1) To penetrate promptly the hostile second position, in order to turn MONTFAUCON and the section of the hostile second position within the zone of action of the 5th Corps (center Corps) and thereby assisting in the capture of the hostile second position, west of MONTFAUCON.

(2) To await arrival of 5th Corps at Corps objective (dashed brown line); then to advance in conjunction with 5th Corps to American Army objective (full brown line) and organize this line for defense.

- (3) To reach the American Army Objective (full brown line) on the afternoon of D day and exploit this penetration of hostile third line during the night D/D plus 1.
- (4) To conserve its strength and be prepared to advance north of Combined Army First Objective (BOIS DE FORET) when ordered by Army Commander.
- (5) To protect right flank of the general attack (organize west bank of MEUSE for defense.
- (6) Corps and divisional artillery to assist, when necessary, in neutralizing hostile fire and observation from heights east of the MEUSE.
- (c) Zone of Action:

Right boundary: The MEUSE.

Left boundary: MALANCOURT (excl.) - CUISY (incl.) - SEPTSARGES (incl.) - NANTILLOIS (excl.) - CUNEL (excl.) - Hill 299, 2 km. N.E. of CUNEL (incl.).

(d) Objectives: See map.

3. (a) (1) The right division will attack the front from the MEUSE to PASSERELLE DU DON (excl.).

(2) Division assembly sector and zone of action:

South boundary: REGRET - BLERCOURT road.

East boundary: Ft. de la CHAUME (excl.) - road fork 25.0 - 68.2 - thence due north to the MEUSE - MEUSE RIVER.

West boundary: BALEYCOURT (excl.) - east edge Bois de SARTELLES to neck at 23.0 - 63.9 - FROMEREVILLE (excl.) - GERMONVILLE (excl.) - CHATTANCOURT (excl.) - PASSARELLE du DON (excl.) - Woods at 18.3 - 77.9 (incl.) - GERCOURT et DRILLANCOURT (incl.) - the east-facing section of Tr. due BOIS JURE (incl.) - Tr. du BOIS ROND (incl.) - LAITERIE de BELHAME (incl.).

(3) The left of the division will attack so as to reach quickly the open ground east and north of GERCOURT ET DRILLANCOURT and the TR. DU BOIS JURE, and so as to assist the center of the division in the reduction of BOIS DE FORGES. Progression of rolling barrage along the main axis of BOIS DE FORGES (from near 19.5 - 76.5 to 21.0 - 79.0) at rate of 100 meters in five minutes. Artillery not employed in the barrage will assist in neutralization of hostile fire and observation from east bank of the MEUSE and south of HARAUMONT. The division will organize and hold the line COTE DE L'OIE (incl.) - DANNEVOUX (excl.) and clean up its front to the MEUSE. During the night of D minus 2/D minus 1 the division will move its artillery units into its own (new) sector, except those units which are to remain in sectors on the left. During the same night the division will move into its own (new) sector all other units except the necessary garrisons of O.R. 304 and O.R. LORRAINE. After H hour these garrisons may remain in place to constitute a divisional reserve, but they will under no circumstances be allowed to impede the progression of traffic of the divisions in whose sectors they are. The Commanding General 33rd Division will be held responsible for the defense of the Corps sector (his present division sector) up to H hour.

(b) (1) The Center Division will attack the front from the PASSERELLE DU DON (incl.) to the bend in RAU DE FORGES at 16.5 - 75.2.

(2) The Division assembly sector and zone of action:

South boundary: REGRET - BLERCOURT road.

East boundary: Coincides with west boundary of right division.

West boundary: Cross-roads 1 km. N.W. of NIXEVILLE - west corner of BOIS BOURRUS at 19.5 - 67.9 fork of water course at 17.8 - 72.3 - bend in RAU DE FORGES at 16.5 - 75.2 - TR. MONTANTE (incl.) - COTE 262 (incl.) - Hill 281 (14.7 - 82.9) - BRIEULLES SUR MEUSE (excl.).

(3) The division will penetrate the hostile second position where it will halt 30 minutes (except in BOIS JURE), under cover of standing barrage and destruction fire, reorganize, and then proceed to Corps Objective. BOIS JURE will be cleaned up at once (See orders to Right Division). The front line elements of the left of the division, without waiting for orders from the rear, will advance from the Corps Objective to the American Army Objective as soon as they observe or learn that the division on the left (4th Div.) is advancing, or has advanced, beyond the Corps Objective. On the same principle the right of the division will advance with the left of the division. These restrictions will not otherwise influence independent progress of units: See par. 3 (x) (5). Artillery not required for immediate support of the attack will assist in neutralization of enemy fire and observation from east bank of the MEUSE, the region north of HARAUMONT receiving the attention of artillery that has followed the division to the north of RAU DE FORGES. During the night of D/D plus 1 small patrols will be sent towards HARAUMONT and LINY DEVANT DUN.

(c) (1) The left division will attack from bend in RAU DE FORGES at 16.5-75.2) to village of HAUCOURT (excl.).

(2) Division assembly sector and zone of action:

South boundary: BLERCOURT - DOMBASLE road.

East boundary: Coincides with west boundary of center division.

West boundary: Road fork at 16.2 - 61.1 - JOUY en ARGONNE (excl.) - MONTZEVILLE (incl.) - HAUCOURT (excl.) - then coincides with left boundary of the Corps (par.2.c).

(3) The division will penetrate the hostile second position where it will halt 30 minutes under cover of standing barrage and destruction fire, reorganize, and then proceed to Corps Objective. The front line elements of the division, without waiting for orders from the rear, will advance from Corps Objective to American Army Objective as soon as they observe or learn that the right or center division of the 5th Corps has arrived at, or has passed beyond, its Corps Objective. The penetration of the hostile 3rd position will be exploited, upon orders of Corps Commander,



On the boundary between the right and center division barrage will be laid down at coordinate 18.5 - 75.7; between center and left divisions, on coordinate 16.3 - 75.3; on left boundary of left division at coordinate 14.85 - 74.15, thence to 15.0 - 74.6 and 16.3 - 75.3. From the line thus established the barrage will begin to roll at H plus 45 minutes. The left division will make the refused element of its barrage on the left connect up with 5th Corps by rolling left extremity at H plus 25 minutes. Prior to this time there may be raking fire south of the barrage line in the discretion of the division commanders, and during this barrage of 45 minutes important hostile points will be given special attention.

X X X X X

(5) Each division will advance to the Corps Objective without waiting for the division on its right or left. Exposed flanks will be protected by support or reserve elements. Some conditions apply to all advances between control lines, whether by large or small units.

(6) The advance will be pushed with great vigor. The left division of the Corps will reach American Army Objective during the afternoon of D day. The other divisions will reach the same objective (along the MEUSE) without delay.

(7) The center and left divisions will designate in advance one battery of 75 mm. to accompany each first line battalion, with the remaining battery of the battalion to follow in reserve.

(8) Each division will make ample arrangements in advance to construct promptly suitable passages for artillery and horse-drawn vehicles across our own and enemy's entrenched zone and No Man's Land. The importance of adequate preparation and speedy completion of this work is emphasized.

X X X X X

(11) The force sent to the MEUSE will only be such as is sufficient to "clean up" thoroughly. The river front will be organized promptly to resist counter attack. The artillery and air service will bear in mind the possibility of counter attack, especially north of VILOSNES-sur-MEUSE. In order to hold the MEUSE River position in

proper depth, commanders of units concerned are authorized to place their reserves in zones of action assigned to divisions on their left, these reserves to avoid interfering with progression of other elements. Barrages should be registered and S.O.S. signals arranged before dark on D day.

X X X X X

(a) LIAISON:

(1) For Plan of Liaison see Annex No. 7.

(2) AXES:

3rd Corps: - RAMPONT - DOMBASLE EN ARGONNE - MONTZEVILLE -  
 ESNES - BETHINCOURT - CUISY - SEPTSARGES -  
 NANTILLOIS - CUNEL - AINCREVILLE - VILLERS - DEVANT  
 DUN - MONTIGNY-DEVANT-SASSEY.

Right Div: Ft. des SARTELLLES - BAMONT FME. - CHATTANCOURT -  
 BETHINCOURT - Axis Bois DE FORGES.

Center Div: NIXEVILLE - FROMEREVILLE - BETHINCOURT - Min. de  
 GUENEVILLE - DANNEVOUX.

Left Div: BLERCOURT - SIVRY la PERCHE - BETHELAINVILLE -  
 MONTZEVILLE - thence along axis of 3rd Corps.

(3) Posts of Command:

3rd Corps (1st Echelon) - RAMPONT (advanced P.C. MONTZEVILLE

Chief of Artillery 3rd Corps - RAMPONT) at time to be announced

later.

33rd Division: Coordinates 21.3 - 69.3

80th Division: " 19.4 - 69.6

4th Division: " 16.8 - 69.6

3d Division: - BLERCOURT

C.O. CORPS Heavy Art. BETHELA INVILLE

C.O. GROUP "C" Heavy Art. (Corps) - 20.9 - 66.4

By command of Major General Bullard:

A. W. BJORNSTAD,  
 Brigadier General, G.S.,  
 Chief of Staff.

Lt. Col. Jas. G. Hannah from records Hist. Sect. A.W.C. 8/23/22  
 MWH

P.C. Third Army Corps, A.E.F.

Field Order

27 September 1918, 2:30 a.m.

No. 19.

Maps: Same as Field Order No. 18.

1. (a) The enemy without either serious infantry or artillery resistance has been driven back on the whole front of the First Army.  
(b) The Fifth Corps has its right northeast of MONTFAUCON.  
(c) At 5:30 a.m., September 27, the First Army will continue its advance to the combined Army First Objective.
2. The 3rd Corps will hold the line of the MEUSE with its right flank and attack with its left flank.
3. (a) The right division (see Field Order No. 18) will take over the MEUSE river front now held by the right and center divisions.

Detailed arrangements will be made later.

(b) The center division will be assigned a mission after it has turned over its present front pursuant to preceding paragraph. Meantime it will send strong reconnoitering parties to the high ground between HARAUMONT and the MEUSE.

(c) The left division, reinforced by one regiment of center division and supported by all available artillery as per telegram of September 26, will attack the enemy and advance to the American Army Objective, where it will dig in, reconnoiter with strong parties to the north and to the east bank of the MEUSE, and prepare for further advance. The operation will begin at daylight.

(d) Corps Artillery will advance to new positions to support the attack of left division and to protect the front of the right and center divisions by counter battery and other fire.

(e) The reserve division now in the forest west of MONTZEVILLE will be in readiness to march in the direction of the general advance of the First Army.

4. No changes in Administrative details.

5. No changes.

By command of Major General Bullard:

W. C. SHERMAN  
Lt. Colonel, G.S.,  
Asst. G-3

FIELD ORDER

P.C. Third Army Corps, A.E.F.

NO. 20.

27 September 1918 - 19 o'clock.

1. Corps on our left has made slight progress during the day and is practically in contact with the left of our 4th Division between Cote 295 and MONTFAUCON.

X X X X X

By command of Major General Bullard:

A. W. BJORNSTAD,  
Brigadier General, G.S.  
Chief of Staff.

Lt. Col Jas. G. Hannah from records Hist. Sect. A.W.C. 8/24/22

MWH

Field Order

P.C. Third Army Corps, A. E. F.,

No. 22

3 October 1918, 9:00 o'clock.

Maps: VERDUN-MEZIERES 1:80,000

PLAN DIRECTEUR 1:20,000

Troops:(a) Left Division.

Maj. Gen. Cronkhite

80th Division.

228 F.A. (Fr.)

1 bn. 289th R.A.L. (Fr.)

\_\_\_\_\_ Air Squadron

\_\_\_\_\_ Balloon Company

(b) Center Division.

Maj. Gen. Hines.

4th Division

250th F.A. (Fr.)

1 bn. 308th R.A.L. (Fr.)

\_\_\_\_\_ Air Squadron

\_\_\_\_\_ Balloon Company

Co. A 1st Gas Regt.

Co. F 1st Gas Regt.

(c) Right Division.

Maj. Gen. Bell

33d Div. less art. &amp;

1 Inf. Regt.

52nd F.A. Brig.

1 bn. 308th R.A.L. (Fr.)

1 Flight Squadron

\_\_\_\_\_ Balloon Company.

1. (a) The enemy has been driven back by the French, British and Belgian armies. In our front he occupies the Heights east and west of ROMAGNE.

(b) The 1st American Army A.E.F. has captured about 9,000 prisoners and over 100 guns.

Over 100 planes have been destroyed by our aviators since the battle started.

(c) The 1st American Army will continue the attack.

2. (a) The 3rd Corps will continue its attack on D day at H hour.

(b) Missions of this Corps in detail:

(1) To attack and penetrate the hostile 3rd position between CUNEL and the MEUSE.

(2) To capture the high ground northeast of CUNEL.

(d) Corps Artillery.

Brig. Gen. Catchell

289th R.A.L. (Fr.)

407th R.A.L.

413th R.A.L.

456th R.A.L.

1 bn. 308th Br.

\_\_\_\_\_ Air Squadron

\_\_\_\_\_ Balloon Co.

(e) Air Service.

\_\_\_\_\_ Air Sq. less 1 flight

\_\_\_\_\_ Balloon Co.

(f) Tanks.

Major Hergaut

1 bn. St. Chamond Tanks

(g) Reserve.

79th Div. less art.

1 Regt. of 33d Div.

(h) Special troops:

See annexes.

(3) To advance to the combined Army First Phase Line, assisting the 5th Corps to capture the heights near ROMAGNE sur MONTFAUCON.

(4) To protect the right flank of the advance of the I Army.

(5) To maintain along the MEUSE the present defensive position from BOIS de FORGES to BOIS de la COTE LEMONT (inc.).

## (c) Zones of action:

Right boundary: The MEUSE.

Left boundary: MALANCOURT (inc)

FAYEL FME. (Inc.) - Road fork 500 m. north of MONTFAUCON (11.5 - 78.6) (inc.)

NANTILLOIS - CUNEL road (inc.) CUNEL. (inc.)-

BANTHEVILLE (exc.) ANDEVANNE (inc.) -

TAILLY (exc.).

3. (a) (1) The left division will attack the front along the BOIS des OGONS.

(2) Division assembly sector and zone of action:

South boundary - RAU de FORGES.

(3) The center East boundary - CUISY (exc.) - SEPTSARGES (exc.) -  
 by outflanking from the west COTE 295 (12.5-30.0)-(11.6-  
 83.2) Road (11.5-33.5) to 11.2-  
 84.2) - Road (11.3-34.2 to 11.0-  
 84.8) - western border BOIS de  
 FORET - COTE 299 (la Mi. Noel)-  
 AINGREVILLE (inc.) - Fme. de REME  
 (inc.) - VILLEIRE-devant-DUN (inc).  
 West " Same as Corps (see above)

(3) This division will penetrate the hostile position south  
 west of the BOIS de FAYS with barrage at the rate of  
 100 m. in 4 minutes. It will halt minutes just south  
 of the CUNEL - BRIEULLES road under cover of standing  
 barrage and destruction fire, reorganize, and then pro-  
 ceed at the rate of 100 meters in 8 minutes to the com-  
 bined Army First Phase Line (northern edge BOIS des  
 RAPPES and of BOIS des CLAIRS CHENES - Hill 299), where  
 it will await orders. It will advance without regard to  
 the advance of the division on its left, but will assist  
 the progression of the right flank of the latter by  
 working around strong points which are delaying it. Of  
 the reserve of this division 1 regiment will not be sent

(1) The 7th  
 AUTHORIZED by the Corps Commander.

(b) (1) The center division will attack the BOIS DE FAYS.

(2) Division assembly sector and zone of action:

South boundary - RAU DE FORGES.

(2) The 1st  
 East " COTE 262 - Hill 281 (14.7 - 32.9) (inc)  
 BRIEULLES-sur-MEUSE - River MEUSE  
 north.

West " The east boundary of the left division.

(3) The center division will conquer the area within its zone by outflanking from the west the positions near the river. It will attack the works south of the BOIS DE FAYS, quickly gaining the cover of the wood and will then advance with its left elements in liaison with the left division and with none of its units east of the BOIS DE FAYS. In this manner the division will enter the BOIS DE MALAUMONT, BOIS DE PEUT DE FAUX and BOIS DE FORET from the left of its sector and then clean up by advancing to their eastern edge. No attack will be made across the open ground east of the BOIS de FAYS and north of the BOIS DE BRIEULLES. The rate of advance of its rolling barrage in liaison with the left division will be at the rate of 100 m. in 4 minutes up to the CUNEL - BRIEULLES road; then, after a halt of 20 minutes, at the rate of 100 m. in 4 minutes up to the CUNEL - BRIEULLES road; then, after a halt of 20 minutes, at the rate of 100 m. in 8 minutes. The division will await further orders when reaching the line COTE 299 - northern and eastern edge of the BOIS de FORET.

(c) (1) The right division will hold its present sector and protect the eastern flank of the center division.

(d) X X X X X

(g) Reserve.

(1) The 79th Division will remain in its present location, ready to follow the progression of the left division at H plus 2 hour. Previous to D-1 day the division will have marked and improved two parallel routes for its advance to a location in the BOIS DE MONTFAUCON.

(2) The Infantry Regiment of the 33rd Division will be assembled in the immediate vicinity of MALANCOURT north of the RAU de FORGES under its regimental commander who will keep these headquarters informed as to where messages will reach him.

X X X X X

(h) General.

(2) Division commanders will give their personal attention to the formation of their infantry in depth and to insure that this depth is employed, not to thicken advanced lines but to pass through advanced lines or for maneuver to the flanks. The mixing of units by the constant reinforcing of the advance line will be provided against. Where serious resistance is encountered infiltration will be promptly employed.

X X X X X

## 5. (a) Liaison:

(1) For plan of Liaison see Annex No. 7.

(2) Axes:

3rd Corps - No change.

Left Division - SEPTSARGES - NANTILLOIS - CUNEL - AINGRE-  
VILLE - ANDEVANNE.

Center Division - CUISY - Min. de l(ETAHCNE - CLERY  
le-GRAND.

Right Division - No change.

P. C. 3rd Corps - MONTZEVILLE.

Chief of Artillery 3rd Corps - MONTZEVILLE.

Left Division - No change.

Center Division - No change.

Right Division - No change.

By command of Major General BULLARD:

A. W. BJOENSTAD,  
Brigadier General, G.S.,  
Chief of Staff.

Lt. Col. Jas. G. Hannah from records Hist. Sect. A.W.C. 8/24/22  
MWH

P. C. Third Army Corps, A.E.F.

3 October 1918 - 15:45 o'clock.

CORRECTIONS TO FIELD ORDER #22.

1. Paragraphs 3 (a) (3), 3 (b) and 3 (h) (1) "a" and "b" are corrected as follows:

"Barrage line and rate as follows:

From Line:

Point (10.2-81.7)(connection with 3rd Division) to hill 274 to south-eastern corner BOIS des OGONS to (11.6-83.2) (connection with 4th Division).

To line:

Fme. de la MADELIENE (10.1-83.2) to (11.4-83.6), at the rate of 100 meters in four (4) minutes.

From Line:

Fme. de la MADELIENE to (11.4-83.6).

To line:

(09.9-84.7) to (10.3-84.7) to (11.2-85.4), at the rate of 100 meters in six (6) minutes.

Beyond this line at the rate of 100 meters in eight (8) minutes.

Barrage of the 4th Division will conform to the rate of the 80th Division."

2. Paragraph 3 (h) (1) "c" is corrected as follows:

"The following is prescribed by the Army:

'No mustard gas to be used east of the MEUSE until further orders.'"

By command of Major General BULLARD:

F. W. CLARK,  
Lieut. Colonel, G.S.  
A. C. of S., G-3

Lt. Col. Jas. G. Hannah from records Hist. Sect. A.W.C. 8/24/22  
MWH

P.C. Third Army Corps,

7 October 1918, 17:30 o'clock.

Field Order:

NO. 24.

Maps: Same as Field Order No. 23.

1. No change in the hostile situation. The 1st American Army will seize and hold the COTES DE MEUSE east of CONSENVOYE on October 8, 1918. and on the following day the heights west of ROMAGNE-sous-MONTFAUCON.
2. The Third Corps will protect the flanks of the attack of the 5th Corps and 17th Corps.

X X X X X

By command of Major General BULLARD:

A. W. BJORNSTAD,  
Brigadier General, G.S.,  
Chief of Staff.

Lt. Col. Jas. G. Hannah from records Hist. Sect. A.W.C. 8/24/22  
MWH

BY COMMAND OF MAJOR GENERAL BULLARD:

A. W. BJORNSTAD,  
Brigadier General, G.S.,  
Chief of Staff.

Lt. Col. Jas. G. Hannah from records Hist. Sect. A.W.C. 8/24/22  
MWH

FAIR

P. C. Third Army Corps, A.E.F.,

8 October 1918 - 17:30 hours.

Field Order

No. 25.

1. (a) The 17th Corps, on our right, has progressed as far as north of CONSENVOYE - MOLLEVILLE FME. - BOIS DE HAUMONT - through the center of the BOIS DE CAURES - Cross-roads at 30.6 - 77.5 - North of Bois de WAVRILLE. It has taken at least 2,000 prisoners, including a battalion of 210 guns at MOLLEVILLE FME. French G. H. Q. reports that resistance north of ST. QUENTIN has broken and a great many prisoners taken.

(b) The 5th Corps attacks tomorrow the BOIS DE CUNEL, Tr. MAMELLE, the heights west of ROMAGNE-sous-MONTFAUCON and the ROMAGNE-CUNEL Road.

2. This Corps is charged with protecting the flank of the attack of the 5th Corps.

3. The Commanding Generals, 4th and 80th Divisions, will keep themselves accurately and promptly informed of the progress of the attack of the 5th Corps. They will assist the attack by artillery fire on enemy artillery and machine guns nests. They will quickly seize every opportunity to advance and assist the progress of the 5th Corps.

4. Administrative details: No change.

5. P.C.'s and Axes of Liaison: No change.

By command of MAJOR GENERAL BULLARD:

A. W. BJORNSTAD,  
Brigadier General, G. S.,  
Chief of Staff.

Lt. Col. Jas. G. Hannah from records Hist. Sect. A.W.C. 8/24/22  
MWH

PROPERTY OF U. S. ARMY

(5) The 4th Division will take P. C. Third Army Corps, A.E.F.,

vicinity of 11.0 - 07.4 - CLERY le TRAI 9 October 1918 - 20:10 hours.

Field Order

No 26.

1. The Corps on our left is reported to hold Trench MAMELLE, RAU de DANTRISE and Le COTE DAME MARIE. It is also reported that the 3rd Division holds the ridge 500 meters south of CUNEL. On the east bank of the MEUSE, the 33rd Division has taken BOIS de CHAUME. The front line of this Corps is east and north border of the BOIS DE FAYS - LA VILLE-aux-BOIS FME - thence west to the CUNEL-NANTILLOIS road. The 5th Corps will attack toward BANTHEVILLE in conjunction with this Corps.

X X X X X

P. C. Third Army Corps, A.E.F.,

10 October 1918, 19:30 o'clock.

Field Order

No. 27.

1. The I Army will continue its attack tomorrow along the entire front. Our front line is as follows: 09.7 - 84.7, 10.4 - 84.7 northern edge Bois de MALAUMONT to 11.0 - 84.8, thence along the northern edge of the BOIS de PEUT le FAUX (possibly in the south edge of the BOIS de FORET from 11.6 - 85.5 to 12.5 - 85.5).

2. This Corps will attach at H hour in the direction of the line CLERY le PETIT - ANDEVANNE (both inclusive).

3. (a) (1) The 80th Division will take the Bois de la PULTIERE, Bois des RAPPES, Bois CLARIS CHENES, AINCREVILLE, Woods in the vicinity of Fme. de CHASSOGNE and ANDEVANNE. It will thoroughly clean up these woods.

(2) The arrangement for barrage will be made in agreement with the Commanding Generals of the divisions to the right and left.

(b) The 4th Division will take the Bois de FORET, the woods in the vicinity of 11.5 - 87.4 - CLERY le GRAND - COTE 261; the Bois de BABIE-MONT. It will be prepared to resist counter attack from the north and east. It will thoroughly clean up the Bois de FORET. The arrangements for the barrage will be made by mutual agreement with the division on his left.

Attacking Division,

Major Gen. Bullard

5th Div. (less art. and

1 Co. Sig. Bn.)

1st Bn. F. A. Brigade

4th F. A. Brigade (less 1

Lt. Col. Jas. G. Hannah from records Hist. Sect. A.W.C. 8/24/22  
MWH.

3rd F. A. Brig. (less 1 regt.

7579)

4th B. A. Co.

250 B. A. Co. F.

1/454 B. A. Co.

1/352 B. A. Co.

1/351 B. A. Co.

1 Air Squadron

1 Machine Company

Co. A, 1st Gas Regt.

Supporting Division,

2d. Gas Regt.

6th Division (less 2

regts. art.)

1 regt. & 1 Co. 8th

F. A. Brigade.

1 Air Squadron

1 Machine Company

X X X X X

By command of Major General BULLARD:

A. W. BJORNSTAD,  
Brigadier General, G. S.,  
Chief of Staff.

(a) Since September 1918 the 1st American Army has captured over 17,000 prisoners.

(b) The 1st American Army (less 17th French corps) will hold its present positions on Cot. 15th and will attack on Cot. 14th. The 17th Corps French continues its attack on Cot. 13th and 14th.

(c) 5th Corps will attack on Cot. 15th at 11 hour, with 1st and 2nd attack along the line Bois de CLERY - MONTMAYE - CLERY - CARLE 1st, while the 3th Corps attacks with one division west of Bois de MONTMAYE and Bois de

P. C. Third Army Corps, A.E.F.

13 October 1918, 3 hours.

Field Order

No. 28.

Troops.

(a) Attacking Division.

Major Gne. McMahon

5th Div. (less art. and  
1 Co. Engrs.)

155th F. A. Brigade

4th F. A. Brigade (less 1  
regt. 75's & 1 bn. of 155's)

3rd F. A. Brig. (less 1 regt.  
75's)

456 R. A. L.

250 R. A. C. P.

1/454 R. A. L.

1/330 R. A. L.

1/301 R. A. L.

1 Air Squadron

1 Balloon Company

Co. A, 1st Gas Regt.

(b) Supporting Division.

Maj. Gen. Buck

3rd Division (less 2  
regts. art.)

1 regt. & 1 bn. 4th

F. A. Brigade.

1 Air Squadron

1 Balloon Company

1. (a) The enemy is resisting our advance between the MEUSE and the AISNE by skillful use of machine guns and artillery.
- (b) The allied armies to our left are continuing their advance and the enemy is giving away before them.
- (c) Since September 26th the 1st American Army has captured over 17,000 prisoners.
- (d) The 1st American Army (less 17th French Corps) will hold its present position on Oct. 13th and will attack on Oct. 14th. The 17th Corps French continues its attack on Oct. 13th and 14th.
2. (a) This Corps will attack on Oct. 14th at H hour, with its main attack along the line Bois de CUNEL - BANTHEVILLE - GRAND CARRE FME, while the 5th Corps attacks with one division west of Bois de ROMAGNE and Bois de

(c) Reserve:

4th Div. (less art.)

(d) Corps Artillery:

3 Bns. 407 R. A. L.

2 Bns. 413 R. A. L.

1 Air Squadron

1 Balloon Company

(e) Air Service:

1 Air Squadron

1 Balloon Company.

BANTHEVILLE, the two Corps

jointly capturing the high

ground north of Bois de BANTHE-

VILLE, and the intervening

ground being cleaned up princi-

pally by other troops of the

5th Corps.

## (b) Missions of this Corps:

(1) To drive one division through

to LE GRAND CARRE Fme. and

high ground 1 km. north and

northwest of it.

(2) To assist the 5th Corps in

reducing the Bois de

BANTHEVILLE.

(3) To protect the flank of the

attacking division with

other troops.

(4) To continue its advance to

the line northeast of edge

of BOIS DE FORET-A INCREVILLE

-Fme. de CHASSOGNE - Hill

300 (1/2 km. southwest of

ANDEVANNE.)

(c) Zones of Action:Right boundary of Corps:

CHATTANCOURT (exc.) - BETHINCOURT-(exc.) BOIS AU RU (exc.) -

The MEUSE River (exc.) - FORGES (inc.) - The MEUSE River (exc.).

Left boundary:

MALANCOURT (inc.) - MONTFAUCON (exc.) - center of the BOIS DE

BEUGE - Bois de CUNEL (inc.) - Fme. de LA WOUIS (1/2 Km. northeast of

ROMAGNE) (exc.) - BANTHEVILLE (inc.) - roadfork 3/4 Km. west of le GRAND

CARRE Fme. (inc.) - Bois D'ANDEVANNE (inc.) - REMONVILLE (exc.).

3. (a) The attacking division will attack between Bois de la PULTIERRE-Bois des RAPPES - RAU DE CHELINE and ROMAGNE sous MONTFAUCON - Bois de BANTHEVILLE, along the axil line Bois de CUNEL / BANTHEVILLE - LE GRAND CARRE Fme. - Bois d'ANDEVANNE. The attack will pass through the front line held by the supporting division between CUNEL and ROMAGNE sous MONT FAUCON. The attacking division will drive through to LE GRAND CARRE Fme. and hold and organize, and where it will gain contact with the 42nd Division which attacks from north of SOMMERANCE. It will follow a deep rolling barrage at the rate of 100 meters in five minutes. It will maintain its progress without stop to the objectives, above given, passing lines (where necessary) without halting. One brigade will be assigned to make the direct attack. About one regiment will be assigned to maneuver so as to enter Bois de la PULTIERRE and Bois des RAPPES from the southwest and west, and clean up these woods. The division will clean up the eastern part of Bois de BANTHEVILLE. By maneuver to the north and northeast the division will eventually gain the line AINCREVILLE - FME. de CHASSOGNE - Hill 300 (1-1/2 km. southwest of ANDEVANNE).

X X X X X

5. (1) For plan of liaison see Annex No. 3.

(2) Axes:

3rd Corps: MONTZEVILLE - MONTFAUCON - CUNEL - BANTHEVILLE.

Attacking Division: SEPTSARGES - NANTILLOIS - CUNEL - BANTHEVILLE.

Supporting Division: No change.

(3) P.C.s. See Plan of Liaison.

By command of Major General Hines:

A. W. BJORNSTAD,  
Brigadier General, G. S.,  
Asst. Chief of Staff, G-3

Lt. Col. Jas. G. Hannah from records Hist. Sect. A.W.C. 8/24/22  
MWH

P.C. Third Army Corps, A.E.F.

14 October 1918, 19:30 o'clock.

Field Order:

No. 29.

1. The enemy has counter attacked three times today and each time has been repulsed. Our line has advanced north of Bois de FORET, Bois de la Pultiere, and ridge running southeast from western most corner of Bois de la PULTIERE. the 1st American Army continues the attack tomorrow.
2. (a) This Corps continues the attack tomorrow, October 15, in accordance with F. O. 28, at 7:30 a.m.
3. (a) The 5th Division will continue its attack as prescribed in F.O. 28, and G-3 Order 187.  
(b) The 3rd Division will continue its attack to gain the north edge of the Bois de RAPPES, CLAIRE CHENES, COTE 299, and clean up the eastern end of the Bois de FORET. On the northern end of the Bois de RAPPES it will establish liaison with the 5th Division its left. Outpost detachments will be established to the north and east.  
(c)(d)(e) The missions of the 4th Division, Corps Artillery and Air Service remain unchanged.
4. Administrative details: No change.
5. Liaison and P.C.s: No change.

By command of Major General HINES:

A. W. BJORNSTAD,  
Brigadier General, G. S.  
Chief of Staff.

Lt. Col. Jas. G. Hannah from records Hist Sect. A.W.C. 8/24/22  
MWH

Field Order:

P.C. Third Army Corps, A.E.F.,  
17 Oct. 1918, 10:00 o'clock p.m.

No. 32.

Maps: DUN )  
BRANDEFILLE ) 1:20,000  
VERDUN A & B )

1. The success of the allied armies has continued today. The British have landed at OSTEND and are advancing. The 5th Corps, on our left has advanced and the 17th Corps, on our right, is consolidating its line.

The 1st American Army will improve its position for a further advance by local operations and by the continuance of the advance of the 1st Corps tomorrow, October 18.

2. The 3rd Corps will complete the mopping up of the Bois de FORET and CLAIRS CHENES.

X X X X X

P.C. Third Army Corps, A.E.F.,  
18 October 1918 - 24:00 hours.

Field Order

No. 33.

Maps: DUN )  
BRANDEVILLE ) 1:20,000  
VERDUN A & B )

X X X X X

(b) East and west boundaries of Corps sector unchanged. Former division of Corps sector into three Divisional sectors is abolished. Corps sector is divided into two divisional sectors, with following boundary between them:

VILLERS-devant-DUN (to 3rd Division) - Fme. de  
 CHASSOGNE (to 3rd Division) - CLAIRS CHENES  
 (to 3rd Division) - Bois de la PULTIERE (to  
 5th Division) - CUNEL (to 5th Division) - CUNEL -  
 NANTILLOIS road.

X X X X X

5. (b) Plan of Liaison - unchanged.

P.C.'s 3rd Corps - unchanged.

1. The 3rd Division - unchanged.

5th Division - unchanged.

3. (a) 4th Division - JOUY-en-ARGONNE, 19th Oct. 1918, 19 hrs.

90th Division - CUISY- 19th Oct. 1918, 13 hrs.

By command of Major General Hines:

A. W. BJORNSTAD,  
 Brigadier General, G-3  
 Chief of Staff.

Relieve the 90th Division in the western sector during the night  
 October 21/18. The 3rd Division continues to hold the east sector.

3. (a) The 90th Division, upon taking over the west sector, will  
 continue the mission of the 5th Division, i.e., the mopping-up of the  
 Bois de HAYNES and the driving in of the hostile outposts within its zone  
 of action with a view to developing the enemy's main line of resistance.

By command of Major General Hines:

A. W. STONWELL,  
 Brigadier General, G. S.  
 Chief of Staff.

Mr. Col. Jas. G. Henshaw from records Hist. Sect. A.S.C. 8/26/38  
 MSH

P. C. Third Army Corps, A.E.F.

21 October 1918, 15:30 o'clock.

22 October 1918 - 15:30 o'clock.

Field Order

No. 35

Maps: DUN )  
 BRANDEVILLE ) 1:20,000  
 VERDUN A & B)

1. The 1st Army will continue to improve its position for further advance.
2. (a) The 3rd Corps will complete on October 22nd the mopping-up of the Bois de FORET and the Bois de Rappes and will drive in hostile outposts with a view to developing the hostile main position.
  - (b) Division sectors unchanged.
  - (c) In accordance with G-3 Order No. 203, the 90th Division relieves the 5th Division in the western sector during the night October 21/22. The 3rd Division continues to hold the east sector.
3. (a) The 90th Division, upon taking over the west sector, will continue the mission of the 5th Division, i.e., the mopping-up of the Bois de RAPPES and the driving in of the hostile outposts within its zone of action with a view to developing the enemy's main line of resistance.

By command of Major General Hines:

A. W. BJORNSTAD,  
 Brigadier General, G. S.  
 Chief of Staff.

Lt. Col. Jas. G. Hannah from records Hist. Sect. A.W.C. 8/24/22  
 MWH

By command of Major General Hines:

G. E. MARSH  
 Colonel, G. S.  
 Acting Chief of Staff.

Lt. Col. Jas. G. Hannah from records Hist. Sect. A.W.C. 8/24/22  
 MWH

P. C. Third Army Corps, A. E. F.,

22 October 1918 - 19:30 o'clock.

## Field Order

No. 37

Maps: DUN )  
 BRANDEVILLE ) 1:20,000  
 VERDUN A & B )

1. The 1st Army will continue to improve its position for further advance. The 5th Corps now holds the Bois de BANTHEVILLE and is entrenching the northern and eastern border of this wood.

2. The mission of this Corps continues the same as given in Paragraph 2 F. O. 35.

3. (a) The 90th Division will ensure its position in the Bois des RAPPES, will push out strong patrols to take possession of BANTHEVILLE and the high ground north and northwest of that town, and will thus establish its line from the northwest corner of the Bois des RAPPES over the high ground north of BOURRUT to the northeastern corner of the Bois des BANTHEVILLE, where it will join that of the 89th Division.

5. (b) P. C.'s, 3rd Corps - closes at MONTZEVILLE at 16 hours October 23rd and opens at MALANCOURT same hour and date.

3rd Div. - Unchanged.

5th Div. - Unchanged.

90th Div. - Unchanged.

By command of Major General Hines:

R. B. McBRIDE  
 Colonel, G. S.  
 Acting Chief of Staff.

Lt. Col. Jas. G. Hannah from records Hist. Sect. A.W.C. 8/24/22  
 MWH

(A) EXPLOITATION: TO THE LINE P. C. Third Army Corps, A. E. F.,

(06.0 - 84.3) - road fork (11. 28 October 1918, 20 hour.

(12.0 - 81.5) - point on road (11.0 - 82.2) - (13.0 - 80.0)

March south to Bois de FORET.

~~SECRET~~  
Field Order

No. 39

MISSIONS OF THIS CORPS IN DEBILA

(1) To carry without delay the high ground north and east

Maps: DUN-sur-MEUSE - 1:20,000

BUZANCY SPECIAL - 1:50,000

1. (a) The enemy holds the line along the north bank of the ANDON from CLERY-le-PETIT to AINCREVILLE, thence to woods north-west of le GRAND CARRE FME.

X X X X X

2. (a) The 3rd Corps will hold on that portion of its front from 2 kilometers west of VILOSNES (16.0 - 84.2) - along the MEUSE river - eastern edge Bois de FORET - Hill 281 to CLAIRS CHENES (inc.) and will attack on that portion of its front from the Bois des RAPPES (inc.) to the western boundary of the Corps. See attached map. The attack will be made on D day at H hour.

(b) BOUNDARIES: CORPS:

East: Middle point BETHINCOURT - (16.8 - 77.0) - 16.0-79.3) - (16.0-84.2) - The MEUSE River (exc.).

West: AVOCOURT (exc.) - CIERGES (inc.) - to point (06.0 - 84.9) - road fork (06.0 - 88.9) - (06.0.89.7) - (06.3 - 90.5) - 07.2 - 92.5) - (07.5 - 93.1) - (09.2 - 95.3).

(c) OBJECTIVES, FIRST DAY:

The northern and eastern border of La CARHERRE Bois thence along the ridge running southeast from ANDEVANNE to the northern corner of Bois des RAPPES.

(d) EXPLOITATION: TO THE LINE:

(09.2 - 95.3) - road fork (11.1 - 93.5) - 11.8 - 92.3)-

(10.5 - 91.5) - point on road (11.0 - 90.3) - (13.0 - 88.8)

- thence south to Bois de FORET.

(e) MISSIONS OF THIS CORPS IN DETAIL:

(1) To carry without delay the high ground north and east of ANDEVANNE and to assist the attack of the 5th Corps by outflanking Le FEY BOIS from the east, maintaining close combat liaison with that Corps and the 17th French Corps.

(2) To protect the right flank of the attack.

(f) TROOPS: (from right to left:)

5th Division

90th Division

3rd Division (reserve)

32nd Division (reserve)

3. (a) The 5th Division:

(1) TROOPS: The 5th Division (less art. and 1 bn of Inf.)

3rd F. A. Brigade.

264th Air Sq.

9th Balloon Co.

(2) ZONE OF ACTION: East boundary - same as east boundary of Corps.

West boundary - NANTILLOIS - CUNEL

road - eastern edge of

Bois de la PULTIERE -

eastern edge of Bois

des RAPPES- AINCRES-

VILLE (inc.). - Bois de

BABIEFONT (inc.).

X X X X X

## (b) THE 90th DIVISION:

## (1) TROOPS: 90th Division (less artillery)

1 bn. of Inf.

155th F. A. Brigade.

16th F. A. (75's)

250th R.A.C.P.

90th Air Squadron

42nd Balloon Company

Co. F, 1st Gas Regt.

(2) Zone OF ACTION: West boundary - same as west boundary  
of the Corps.East boundary - same as west boundary  
of the 5th Division.South boundary - Bois de BEUGE-  
CIERGES.

(3) OBJECTIVES: The objective of the 90th Division is the line indicated on the map herewith, on the ridge north and east of ANDEVANNE, thence southeast to the Cx. St. MOUCLEN, and northern edge of the Bois de RAPPES. The objectives of the 89th Division are also shown on the map. The jumping off line of the 90th Division is the general line (06.0 - 88.9) - 200 meters south of Le GRAND CARRE Fme. - thence along the reverse slope of the ridge running southeast of Le GRAND CARRE Fme. - north of BOURRUT - northern edge of Bois des RAPPES.

(4) INITIAL DISPOSITIONS: The 90th Division will be in position for attack on the jumping off line at H minus 2 hours.

(5) METHOD OF ATTACK: The 90th Division will attack from the jumping off line at H hour simultaneously with the right of the 89th Division. It will proceed at the same rate as the 89th Division as follows:

4 minutes per 100 meters to edge of rectangular woods northwest of Les GRAND CARRÉS.

8 minutes per 100 meters through rectangular woods to their northern edge, in front of which the barrage will rest 20 minutes.

Leave northern edge of these same woods at H plus 1 hour and 8 minutes.

6 minutes per 100 meters to southern edge of Bois d'ANDEVANNE.

8 minutes per 100 meters in woods to line through point (06.4 - 90.7) arriving there at H plus 2 hours 30 minutes, (in front of which line the barrage will rest 30 minutes) and leaving there at H plus 3 hrs.

8 minutes per 100 meters to line through point (07.1 - 92.3) arriving there at H plus 5 hours 24 minutes.

From this last point the attack to the 3rd Corps objective will be carried on without regard to the division on its flank.

X X X X X

(c) THE RESERVES:

(1) The 3rd Division (less artillery) will be stationed in the area CUISY - SEPTSARGES - MONTFAUCON (exc.) ready to march on D day at H hour. It will maintain liaison with the 15th French division.

(2) The 32nd Division will be stationed in the vicinity of MONTFAUCON ready to march on D day at H hour.

X X X X X

CORPS AXIAL ROADS: Going north - DOMBASLE - ESNES - MALAN-  
COURT - MONTFAUCON - NANTILLOIS - CUNEL  
BANTHEVILLE - REMONVILLE - ANDEVANNE.  
Going south - ANDEVANNE - BANTHEVILLE -  
CUNEL - NANTILLOIS - SEPTSARGES - CUISY -  
BETHINCOURT - ESNES - DOMBASLE.

5. LIAISON:

(a) Combat - Division Commanders are responsible that infantry combat Liaison Groups accompanied by machine guns are established on their flanks as follows:

5th Div. right flank, 1 Co. Inf. 1 Plat. M.G.

left flank, 1 Plat. Inf. 1 Section M.G.

90th Div. right flank, 1 Plat. Inf. 1 Section M. G.

left flank, 1 Co. Inf. 1 Plat. M.G.

(b) CORPS AXES OF LIAISON: MALANCOURT - NANTILLOIS - CUNEL -

BANTHEVILLE - ANDEVANNE - VILLERS

devant DUN.

(c) For Liaison Plan, see Annex No. 4.

(d) P.C.'s: 3rd Corps - - - - - MALANCOURT.

17th Corps - - - - - REGRET

5th Corps - - - - - CHEPPY

5th Division - - - - - Bois de TUILERIES

90th Division - - - - - ROMAGNE-sous-MONTFAUCON

3rd Division - - - - - MONTFAUCON

32nd Division - - - - - Bois de MONTFAUCON

89th Division - - - - - GESNES

By command of Major General Hines:

CAMPBELL KING  
Chief of Staff.

Lt. Col. J. G. Hannah from records Hist. Sect. A.W.C. 8/24/22  
MWH Administrative details: unchanged.

5. (a) Staff of Liaison: unchanged.

(b) P. C.'s: The P.C. of the 3rd Corps opened at MALANCOURT at 14:00 hours, October 22, 1915, and closed at MONTZEVILLE same hour and date.

By command of Major General Hines:

CAMPBELL KING,  
Chief of Staff.

Lt. Col. J. G. Hannah from records Hist. Sect. A.W.C. 8/24/22  
MWH

P. C. Third Army Corps, A.E.F.,

25 October 1918 - 23:00 hours.

Field Order

No. 40

Maps: DUN )  
 )  
 BRANDEVILLE ) 1:20,000  
 )  
 VERDUN A & B )

1. The 1st Army will continue its present operations.
2. The 3rd Corps will continue to improve its position in preparation for further attack.
3. (a) The 3rd Division will remain in position in the vicinity of CUISY as Corps reserve.
- (b) The 5th Division will hold the line taken over from the 3rd Division, and will improve its position in preparation for further attack.
- (c) The 90th Division will improve its line in preparation for further attack.
- (d) The 32nd Division, upon arrival in this area, will take station south of CIERGES.
- (e) Artillery mission unchanged.
4. Administrative details: unchanged.
5. (a) Plan of Liaison. unchanged.
- (b) P. C.'s: The P.C. of the 3rd Corps opened at MALANCOURT at 16:00 hours, October 26, 1918, and closed at MONTZEVILLE same hour and date.

By command of Major General Hines:

CAMPBELL KING,  
 Chief of Staff.

Lt. Col. Jas. G. Hannah from records Hist. Sect. A.W.C. 8/24/22  
 MWH

CAMPBELL KING,  
 Chief of Staff.

Lt. Col. Jas. G. Hannah from records Hist. Sect. A.W.C. 8/24/22  
 MWH

~~SECRET~~

P. C. Third Army Corps, A.E.F.

1 November 1918 - 23:00 hours.

## Field Order

No. 46

Maps: DUN sur MEUSE - 1:20,000

1. The enemy has been beaten on the whole front of our Army. The Corps on our left will continue to advance tomorrow.
2. This Corps will advance tomorrow to its Exploitation Line and continue to exploit to the northeast.
3. (a) 90th Division: The 90th Division will push forward with one brigade, seize and organize the present Exploitation Line (designated in F. O. No. 39, 3rd Army Corps) and exploit with combat patrols, as strong as a company, to the line of bluffs running from HALLES to MONT devant SASSEY.
  - Left boundary extended: To HALLES (exclusive).
  - Right boundary extended: Fme. de JUPILLE (inclusive). thence due east to the MEUSE.

One brigade will remain on the Corps Objective gained today and will continue its consolidation.

Liaison with the 89th Division will be maintained.

- (b) 5th Division: The 5th Division will continue its consolidation of the Corps Objective, pushing out strong reconnaissances to seize and organize the present exploitation line (designated in F. O. No. 39, 3rd Army Corps) and will send patrols to the northeast, maintaining contact with those of the 90th Division.

Left boundary extended: Same as right boundary 90th Div.

- (c) The advance will commence at 5:30 hours.

By command of Major General Hines:

CAMPBELL KING,  
Chief of Staff.

Lt. Col. Jas. G. Hannah from records Hist. Sect. A.W.C. 8/25/22

MWH

~~SECRET~~(a) ~~CONFIDENTIAL~~

P.C. Third Army Corps, A.E.F.

The 90th Division, in its present position, will be ready to

2 November 1918, 21 hours.

Field Order

No. 47

Maps: DUN sur MEUSE - 1:20,000

1. The enemy resistance in our front is weakening. On the front of the Corps on our left he is in retreat.

To day the 90th Division defeated one of his few remaining fresh divisions.

The 1st Army will continue its attack and will carry the heights on the general line - SASSEY sur MEUSE - HALLES - SOMMAUTHE - ST. PIERREMONT.

2. (a) The Third Corps will attack and carry the heights west of the MEUSE overlooking DUN sur MEUSE - SASSEY sur MEUSE - HALLES and will push strong patrols east of the MEUSE and towards MOUSAY and STENAY.

(b) The attack will start at 6:00 hours.

90th Division:

(a) The 90th Division will attack and take the heights west of the MEUSE overlooking DUN sur MEUSE - SASSEY sur MEUSE - HALLES. The maximum use of artillery will be made to assist the infantry advance. It will send strong patrols toward MOUZAY and STANAY. Boundaries as on map herewith.

(b) 5th Division:

The 5th Division will clean up the "Punch Bowl" northwest of DOULCON. It will push strong patrols east of the MEUSE, south of DUN sur MEUSE, and towards MOUZAY and STENAY. They will be supported by the necessary artillery preparation and will gain contact and develop the enemy's position. It will hold the line from point 14.5 - 91.7 along the MEUSE to its present southern boundary.

X X X X X

(e) Corps Reserve:

HEADQUARTERS THIRD ARMY CORPS  
American Expeditionary Forces

The 32nd Division, in its present location, will be ready to move at one hour's notice.

From: Commanding General, 3rd Army Corps, A. E. F.

By command of Major General Hines:

To: Commanding General, 1st Army, A. E. F.

Subject: Report of operations, Sept. 9th  
CAMPBELL KING  
Chief of Staff.

Report of the operations of the 3rd Army Corps in France

Lt. Col. Jas. G. Hannah from records Hist. Sect. A.W.C. 8/25/22  
MWH

XXX

It will be noted that the enemy on the 10th of November put into line in front of the 3rd Corps the last remaining French Division which he was known to have in an effort to stop our advance.

XXX

JOSE L. HINES,  
Major General, U. S. A.

Lt. Col. Jas. G. Hannah from records Hist. Sect. A.W.C. 8/25/22  
MWH

HEADQUARTERS THIRD ARMY CORPS  
American Expeditionary Forces  
December 1, 1918.

From: Commanding General, 3rd Army Corps, A. E. F.  
To: Commanding General, 1st Army, A. E. F.  
Subject: Report of operations, Sept. 9th Nov. 11, 1918.

Report of the operations of the 3rd Army Corps is trans-  
mitted herewith.

X X X

It will be noted that the enemy on the 10th of November put  
into line in front of the 3rd Corps the last remaining fresh Division  
which he was known to have in an effort to stop our advance.

X X X

JOHN L. HINES,  
Major General, U. S. A.

Lt. Col. Jas. G. Hannah from records Hist. Sect. A.W.C. 8/22/22  
MWH

3rd Division in reserve. The positions, zones of action, etc. etc.  
positions are given on attached map. The enemy order of battle opposite  
our front was from west to east as follows:

11th Div. 5th Div. Div.  
with the 5th Bavarian Division in reserve.

After an intense preparatory bombardment, increasing in violence  
at 2:30 hours, and continuing up to 4 hour, our infantry went over the  
top according to schedule and overcame the enemy resistance with  
the first onslaught. Our advance was rapid, in spite of heavy M. G. fire  
from many strong points, notably in the regions of LA FOLLEUSE, GULBY,  
and JOURNAN FORTS, and nothing more than temporary checks were effected  
by even the enemy's best organized strong points. On the whole, how-  
ever, the enemy resistance was slight, due to the element of surprise in  
our attack. By noon the 3rd Division was on the Army objective, and our  
line for the night lay approx 39. along the corps objective.

HEADQUARTERS THIRD ARMY CORPS  
AMERICAN EXPEDITIONARY FORCES

November 25, 1918.

From: Commanding General, 3rd Army Corps, American E.F.

To: Commanding General, 1st American Army.

Subject: Operations of the 3rd Corps, Sept. 9 to Nov. 11, 1918.

1. The following is a brief account of the operations of the 3rd Corps in the period covered by the above dates. Maps illustrating same are herewith attached as well as reports by the G-1 and G-2 Sections.

-----0000-----

THE ARGONNE - MEUSE OPERATIONS

X X X X X

26 Sept. 1918.

X X X X X

The 3rd Corps front was held by three divisions, the 33rd, on the right, the 80th in the center, and on the left the 4th with the 3rd Division in reserve. The boundaries, zones of action, P.C.s dispositions are given on attached map. The enemy order of battle opposite our front was from west to east as follows:

117th Div.

450th I.R. - 11th Gren. R.

7th Res. Div.

66th R.I.R.-36th R.I.R.-72nd R.I.R.

with the 5th Bavarian Division in reserve.

After an intense preparatory bombardment, increasing in violence at 2:30 hours, and continuing up to H hour, our infantry went over the top according to schedule and crumpled up the enemy resistance with the first onslaught. Our advance was rapid, in spite of heavy M. G. fire from enemy strong points, notably in the regions of la TUILERIE, CUISY, and BOIS de FORGES, and nothing more than temporary checks were effected by even the enemy's best organized vantage points. On the whole, however, the enemy resistance was slight, due to the element of surprise in our action. By noon the 33rd Division was on the Army objective, and our line for the night lay approximately along the Corps Objective.

The advance of the 4th Div. on our left from the Corps Objective was prevented, due to fire from their left flank as the right division of the 5th Corps failed to take MONTFAUCON. In order to assist the progress of the 5th Corps the 4th Div. was ordered to send strong patrols into the area of the division on its left to seize strong points. These instructions, however, were superseded by orders issued pursuant to Army instructions to the effect that the 1st and 3rd Corps had reached the Corps Objective and that these two Corps would push on at once to the American Army Objective. These instructions were phoned the 4th and 80th Divisions at 4:00 p.m. and formed the orders upon which the attack was resumed on the 27th.

During the operation the enemy artillery reaction was exceedingly weak, consisting of about 5,000 rounds against the 80,000 rounds fired by our own artillery.

X X X X

Tanks were unable to cross the Corps front and hence were not used in the opening attack.

X X X X

Sept. 27, 1918.

X X X X

F. O. 19 issued at 2:30 a.m. prescribes the attack for the day, but the arrangements therefor were made under the telephonic instructions issued the 26th at 4 p.m. The relief of the 80th Div. directed in F.O. 19 was postponed as it was found that the line of the 80th Div. was not as far forward as it was thought.

The attack was carried out according to F.O. #19 continuing the plan of the previous F.O. Strong enemy resistance developed at MONTFAUCON, NANTILLOIS and in the left of CUISY woods. For a time our advance was checked by the heavy M.G. fire poured along our front by well organized enemy nests. However, MONTFAUCON was taken in cooperation with the right division of the 5th Corps, after which the attack progressed favorably. CUISY Woods was finally penetrated and mopped up

and our line for the night was as follows: (13.0- 81.5) to (14.3 - 82.0), east to include Hill 280, thence skirting north edge of Bois de la COTE LEMONT to (16.0 - 84.0), thence following west bank of MEUSE to (21.5 - 77.0). Our casualties were fairly light.

X X X X

Sept. 28, 1918

Situation and line as of previous night. Enemy order of battle unchanged.

X X X X

Sept. 29, 1918.

No change in front line during the night.

The reserve brigade of the 33rd Div., completed its relief of the sector held by the 80th Div., less its divisional artillery.

The presumed enemy order of battle at the beginning the day west to east was as follows:

<u>37th Div.</u>	<u>117th Div. (?)</u>
<u>147th I.R.</u>	<u>157th I.R. - 450th I.R. - 11th Gren. Regt.</u>
<u>115th Div. (close support)</u>	
<u>5th Bav. Res. Div.</u>	
<u>12 B.R.I.R. - 10th B.R.I.R.</u>	

Our advance in the vicinity of BRIEUILLES in our left sub-sector was halted by the stubborn resistance of the enemy who had thrown fresh units into his line opposite us. Severe flanking M.G. fire from the left as well as heavy frontal fire made further advances by our troops impossible. Our lines remained practically unchanged throughout the day.

X X X X X

Oct. 2, 1918.

X X X X X

Due to the untiring work of our engineers the roads across No Man's Land have been put in fair condition, and the bulk of the Corps artillery is being moved to forward positions.

X X X X X

Oct. 4, 1918.

In accordance with F.O. #22, H hour - 5:25 hours, and D day -

4 Oct. 1918, a successful attack was launched.

Corps front held by 33rd Division on the right and the 4th in the center, and the 80th on the left. (See map).

The mission of the 33 was to hold its present sector and protect east flank of 4th.

The mission of the 4th Div. was to take the Bois de FAYS, Bois de MALAUMONT and advance to north edge of Bois de FORET. It was not to attack across the open space east of the BOIS DE FAYS and BOIS DE MALAUMONT.

The mission of the 80th Div. was to penetrate southwest of Bois de FAYS and continue to the northern edge of the Bois des RAPPES and CLAIRE CHENES.

The 79th Div. was in reserve.

Presumed enemy order of battle. west to east:

<u>115th Div. (close support)</u>		
<u>37th Div.</u>	<u>5th Bav. Res. Div.</u>	<u>AUSTRIAN</u>
<u>147th I. R.</u>	<u>10th B.R.I.R.-12th B.R.I.R.-7th B.R.I.R.</u>	

In addition 2 new Divisions identified during the day: the 236th Div. in Bois des OGONS and 28th Div, in Bois de FAYS.

Our attack, behind a heavy rolling barrage, started as scheduled, Heavy M.G. and artillery fire were put down on our advancing units, particularly in the Bois des OGONS and Bois de FAYS. In spite of this our line advanced, the center division pushing forward to a line just south of the CUNEL - BRIEULLES road. The left division met particularly stubborn resistance and their advance was retarded. Our line for close of day was as follows: Just south of Bois des OGONS - north to Bois PEUT DE FAUX? thence south to north edge of Bois de BRIEULLES, following this edge to western edge of Bois de la COTE LEMONT. Thence continuing the old line.

X X X X X X

Owing to the fact that sufficient time to permit reconnaissance of the terrain was not allowed the 80th Div. they were not able to keep up properly with the barrage. This accounts largely for their failure to reach the desired objective.

X X X X X

The enemy artillery laid down very dense barrages on and in front of our troops, which was doubly effective owing to the flanking nature, the bulk of it coming from east across the Meuse. We did not succeed in gaining any ground during the day. X X X Our aviation but slightly active because of poor visibility. Enemy planes very aggressive and attacked our reconnaissance planes frequently.

A few tanks assisted in this attack but our troops do not understand how to work with them well enough to accomplish much.

6th Oct. 1918.

XXXXX During the day our troops advanced and captured Bois des OGONS in spite of very powerful enemy resistance. Remainder of our line the same.

X X X X X

7th Oct. 1918.

No change in lines of the 80th and 4th Divs. during the day. Positions were consolidated and improved. Our patrols were active. Usual artillery fire, both our own and enemy. Enemy aviation less aggressive.

At 17 hours the 33rd Div. was detached from 3rd Corps and attached to 17th French Corps (G-3 164).

X X X X X

Oct. 9th. 1918.

Morning quiet. At 15:30 hours the 80th Div. attacked along their front and succeeded in advancing and taking LA VILLE aux BOIS FME.

The 4th Div. attacked at 17:50 hours but were unable to advance on account of the heavy gas concentration laid down by the enemy artillery on Bois de MALAUMONT.

X X X X X

10 Oct. 1918.

Pursuant to F.O. 26, continuing the attack as planned in FO. 22. the 4th and 80th Divs. attacked along the Corps front early this morning,

behind a heavy barrage. The Corps artillery placed a heavy fire during the night and early morning before the attack on BANTHEVILLE, AINCREVILLE, CLERY-le-GRAND, CLERY-le-PETIT and LINY, and on a great number of enemy batteries.

The attack was only partially successful owing to the severe enemy artillery flanking fire from across the Meuse and to the stubborn M.G. resistance encountered at all points. Our line for the night was advanced as follows: 10.0 - 84.6 to and along northern edge of Bois de MALAUMONT, thence to CUNEL - BRIEULLES road to west edge of Bois de PEUT de FAUX, thence to CUNEL - BRIEULLES road to west edge of Bois de PEUT de FAUX, thence along north edge of this wood to and along eastern edge of Bois de FAYS, along north edge of Bois de BRIEULLES to COTE 280, thence northeasterly following along edge of the Bois de la COTE LEMONT.

X X X X X

Oct. 11, 1918.

The attack was renewed early in the morning in accordance with F.O. #27 and supported by heavy artillery fire, both Corps and Divisional. Only local advances, mainly in our center, were realized, and our progress was bitterly contested by the heavy M.G. fire and flanking artillery support as of previous days.

Our line of further advance for the night was 10.0 - 84.8 t-10.4 -84.9. thence N.E. to 10.6-85.4 east to 11.0-85.5. thence along northern edge of Bois de FORET to 12.0 - 86.5. thence south through woods.

X X X X X

The relief of the 80th Div. and certain elements of the 4th Div. by the 5th Div. according to G-3 Order 174 was carried out during the night of 11/12 successfully.

Corps front now held by 5th Div. on left and 4th Div. on right with dividing boundary as follows:

14.4 - 86.3 to 13.6 - 86.0 to 13.0 - 84.7 to 12.0 - 84.4 - to 12.0 -  
83.0 - to 12.6 - 82.0 to 13.0 - 80.3 - SEPTSARGES (inc.) - CUISY (exc.)

MALANCOURT (inc.).

X X X

Oct. 13, 1918

X X X

At 3:00 hours, pursuant to F.O. #61, 1st Army, the 3rd Div. passed from the command of the 5th Corps to this Corps. During the night 12/13 the 3rd Div. relieved the 5th Div. by an extension to the right of their front line, also relieving elements of the 4th Div. as far as the southeastern edge of the Bois de PEUT de FAUX.

Our line for the night was held by the 3rd Div. on our left from the MERCEL Tr. on CIERGES - ROMAGNE road to a point 10.0 - 84.7 to 10.9 - 85.6, thence along northern edge Bois de FORET to 12.6 - 85.4.

The 4th Division then held from this point southeast along the Bois de FAYS to the Bois de BRIEULLES to COTE 280; thence northeast along the edge of the Bois de la COTE LEMONT to the Meuse.

The 90th Div. was relieved from the 4th Corps and assigned to the 3rd Corps pursuant to S.O. 411 1st Army.

The 5th Div. was held in the rear of the 3rd Div. as attacking division in preparation for the operations for the 14th Oct. as ordered in F.O. #28.

X X X

Oct. 14, 1918

The attack started at 8:30 as ordered. The 5th Div., designated as attacking division, passed through line held by the 3rd Division, which had been designated as support. On the right the 4th Div. executed a holding attack for assistance and prepared to move upon receipt of any orders from the Corps. Following a heavy barrage and smoke screen our troops advanced satisfactorily in spite of heavy M.G. and artillery fire directed upon them by the enemy. CUNEL was taken by the 5th Div. but

their progress was held up in the vicinity of BANTHEVILLE and the Bois des RAPPES by enfilade M.G. fire from Bois de BANTHEVILLE. The 3rd Div. advanced 1 km. between the Bois de FORET and Bois de PULTIERE, where liaison with the 5th Div. on the left was established. These changes represented our total advances during the day, the 4th Div. not advancing.

X X X

Oct. 15, 1918.

Attack was resumed under F. O. #29 continuing advance as ordered by F.O. #28, 5th Div. on the left, 3rd Div. in center being the attacking divisions, the 4th on the right holding as previously ordered. The progress, however, was slight owing to unusually stubborn resistance in the form of M.G. fire and artillery barrages.

X X X

Great difficulty was had by both the 3rd and 5th Divisions in keeping control of units in the fighting line due to the dense underbrush in the Bois de la PULTIERE, Bois des RAPPES, Bois de FORET and Bois de la PEUT de FAUX. In some organizations the number of men reported for duty being as small as 10 per cent of the authorized strength. Every effort was made to collect men and return them to their units.

X X X

Oct. 20, 1918

In accordance with F.O. #33 an attack with strong patrols was made at 7:00 hours along the Corps front by the 3rd on the right and the 5th on the left with a view to driving in the enemy's outposts and developing his FREY STELLUNG, which he has been organizing along the line: Hill 261 (W. of CLERY-le-PETIT) - AINCREVILLE - Hill 270 (N. of BANTHEVILLE) - le Grand CARRE FME. - thence west.

The attack progressed favorably, the main resistance encountered being the usual heavy M.G. fire supported by artillery, especially in the northern part of the Bois de RAPPES.

By the close of the day Bois de CLAIRS CHENES had been taken and cleaned out and outposts were established 1/2 km. south of BANTHEVILLE and in the Bois de Rappes.

X X X

Oct. 21, 1918.

Our action to develop the enemy line of resistance continued. At 11<sup>30</sup> both divisions made fresh attacks on Bois de RAPPES and Hill 299, both of which were taken in spite of rather determined hostile opposition. An enemy counter attack projected against our troops was broken up, our advances all being held. All ground gained by us was immediately organized and positions consolidated.

X X X

Oct. 22, 1918

During the night the successful relief of the 5th by the 90th Div. was accomplished. 3rd Div. patrols were pushed to the outskirts of BRIEULLES where heavy hostile M.G. fire was drawn. Patrols were pushed forward in the northeastern part of the Bois de FORET, where a prisoner was taken who stated that enemy was evacuating Bois de FORET. Our troops advanced and succeeded in taking all of Bois de FORET up to a north and south line through 13.6, and including Hill 281 all of which were immediately consolidated.

X X X

Oct. 23, 1918

Our positions were further improved. The 90th Div. on the left attacked BANTHEVILLE and 15:00 hours, took the town and also the village of BOURRUT. Their line was pushed along the ridge of La GRAND CARRE FME. across road just north of BOURRUT, to and along northern edge of La GRAND CARRE FME. The 3rd Division pushed strong patrols through Bois FORET and seized small woods 1/2 km. north Hill 299. Other detachments occupied the high ground north of BRIEULLES.

X X X

Oct. 24, 1918

X X X

GRAND CARRE FME. was taken during the day after a heavy artillery concentration had been put upon it, but on account of the heavy return fire of the hostile artillery withdrew 200 meters to the south. Otherwise our lines remained unchanged except for minor improvements.

X X X

Oct. 26, 1918.

In accordance with F.O. #85 1st Army, the 32nd Div. (less 57th F.A. Brig.) attached to 3rd Corps as Corps Reserve.

X X X

Oct. 28, 1918.

Day was moderately active. Our patrols maintained contact with the enemy all along our front. Both VERY-le-GRAND and CLERY-le-PETIT were entered. Along the front of the 5th Div. and outpost line of M.G.s was organized along the ridge of the high ground south of ANDON CREEK, dominating AINCREVILLE, CLERY-le-GRAND, and CLERY-lePETIT. Patrols N.W. of CLAIRE CHENES. Our line was advanced near AINCREVILLE.

X X X

Oct. 29, 1918.

Issued G-3 order #218 relieving the 3rd Division from Corps reserve, and passing it to Army reserve November 1st.

Oct. 30, 1918

Early in the morning troops of the 5th Div. entered and captured AINCREVILLE, which was at once organized and consolidated with our outpost line. Otherwise there was little further activity. Our patrols were in contact with the enemy along our front ready to take advantage of any enemy withdrawal.

X X X

X X X

Oct. 31, 1918.

During the day we advanced our line 400 m. North of AINCREVILLE without opposition. Otherwise our lines remain unchanged.

X X X

Nov. 1, 1918

The general attack ordered in F.O. #39 for which our troops have been preparing for the past few days, was started this morning on time at 5:30 hours. Our jumping-off line was as follows east to west: 16.0 - 84.2 - along Meuse River - eastern edge Bois de Foret - Hill 281 to CLAIRS CHENES (inc.) to 400 m. N. of AINCREVILLE - thence following ridge south of RAU DE CHELINE, including BOURRUT, passing just south of LA GRAND CARRE FME. and N.W. to 5th Corps boundary.

The 90th Div. on the left was the attacking Div. and its objective was as shown on the map. The 5th Div. on the right had instructions to hold its front, meantime pushing forward strong patrols to develop enemy's main line of resistance and seize any ground made possible by advance of the 90th Div. Our attack was in liaison with the attack of the 5th Corps on our left.

The artillery intensive preparatory fire commenced at 3:30, shifting at H hour to a heavy rolling barrage which preceded our advancing troops. Our attack proceeded according to schedule. CLERY-le-GRAND was captured at 7:05 and the troops of the 90th Div. were entering the Bois d'ANDEVANNE advancing on time. At 8:00 intermediary objective was reached and 100 prisoners had reached the cage. 5th Division patrols were active in the regions north of CLERY-le-GRAND and by 11:50 had captured 53 men. The right regiment of the 90th reached its objective. The left regiment encountered heavy M.G. and artillery fire in ANDEVANNE and were forced to halt. By the end of the day our line was roughly the line of the Corps objective.

Preparations for reaching the exploitation objective and in detail to take Cote 243 and establish liaison with the 89th Div. of the 5th Corps on our left. In order to keep up its protective fire, Division

artillery started forward movement by echelon during the afternoon. Our Corps artillery carried out its fire in accordance with the schedule contained in the attack order. Prisoners stated that our artillery fire was very accurate and effective.

X X X

Presumed enemy order of battle:

88th Div. 353 I.R.      426 I.R.	28th Div. 109 Gren.R - 40 Fus.R.-110 Gren.	88th Div. 352 I.R.
107 Div. 52 R.I.R. - 232 I.R.	5 Bav. Res. Div. 12 B.R.I.R. - 10 B.R.I.R.	

Nov. 2, 1918

Attack started again this morning at 5:30, after a quiet night, during which our lines remained as of the close of the operations of Nov. 1.

CLERY-le-PETIT was taken at the onset, and 5th Div. patrols sent out to capture Bois de BABIEMONT succeeded before night.

The 90th Div. encountered severe resistance at VILLERS-devant-DUN, and in the Bois de RAUX. The day's operations centered around these two points, and it was not until late in the afternoon that they were reported taken. The right regiment of the 90th Div. reached the exploitation objective and our line for the night was as follows: North edge of Bois de RAUX, Hill 321, head of Ravine des FOND de THEISSE, then to exploitation line to les DIX JOURS, across to le GRANDES RAIES, including Cote 216, Cote 261, thence to the Meuse, including CLERY-le-PETIT.

X X X

The 32nd Div. was ordered to move up to a position 2 kms. N.W. of ROMAGNE with instructions to be prepared to enter the line.

X X X

At no place did he make a determined effort to completely check our advance. The 5th Div. has thrown a foot-bridge across the Meuse at BRIEULLES and efforts are in progress to bridge the Canal in order to cross troops at this point, in spite of the desperate efforts of the enemy to prevent it.

By night our troops were occupying the general line of the heights from HALLES to SASSEY, Fme de JUPILLE, Fme de la BRIERE, DOULCON, and CLERY-le-PETIT, while strong patrols along the river reported a few very few enemy west of the Meuse.

A few prisoners were taken.

X X X

88th Div.	27th Div.	28th Div.
353 I.R. - 426 I.R.	120 I.R. - 123 I.R.	109 Gren.- 40 Fus.R. 110 Gren.

88th Div.	107th Div.	5th Bav. Res. Div.
352 I.R.	52 R.I.R.- 232 I.R.	12 R.R.I.R.-10 B.R.I.R.-7 B.R.I.R.

Issued Field Order #47 continuing the attack.

Lt. Col. Jas. G. Hannah from records Hist. Sect. A.W.C. 8/22/22  
MWH

1 bn. 200th P.A.A. (Pv.)  
1 Air Sq. (Line 1 Flight)  
1 Battalion Co.  
Co. A, 1st Cav. Regt.

(b) Center Division  
Maj. Gen. Conkrite  
88th Div.  
200th P.A. (Pv.)  
1 bn. 200th P.A.A. (Pv.)  
1 Air Flight  
Co. F, 1st Cav. Regt.

(a) Left Division  
Maj. Gen. Hibbs  
4th Div.  
200th P.A. (Pv.)  
1 bn. 200th P.A.A. (Pv.)  
Troop "F", 1st Cav.  
1 Air Sq.

(c) Allied Forces (1st American Army on the right; 4th French Army on the left) attack on the front  
MUSE DIVISION (exclusive) MUSE DIVISION (exclusive), towards MUSE DIVISION. Remainder of 1st American Army will continue to hold on from the MUSE and the MUSE.  
(d) 1st American Army  
Right boundary of attack zone: The MUSE (exclusive).  
Left boundary of attack zone: West edge of Forest d'ARRENTON.  
GRAND FEN (incl.) - JURELON  
MUSE (incl.)



