

AWARD NUMBER: W81XWH-19-1-0170

TITLE: Mitigating the Gastrointestinal Acute Radiation Syndrome by Blocking Calcium/Calmodulin-Dependent Protein Kinase Kinase 2

PRINCIPAL INVESTIGATOR: Chang-Lung Lee

CONTRACTING ORGANIZATION: Duke University, Durham, NC

REPORT DATE: February 2021

TYPE OF REPORT: Final Report

PREPARED FOR: U.S. Army Medical Research and Development Command
Fort Detrick, Maryland 21702-5012

DISTRIBUTION STATEMENT: Approved for Public Release;
Distribution Unlimited

The views, opinions and/or findings contained in this report are those of the author(s) and should not be construed as an official Department of the Army position, policy or decision unless so designated by other documentation.

REPORT DOCUMENTATION PAGE

Form Approved
OMB No. 0704-0188

Public reporting burden for this collection of information is estimated to average 1 hour per response, including the time for reviewing instructions, searching existing data sources, gathering and maintaining the data needed, and completing and reviewing this collection of information. Send comments regarding this burden estimate or any other aspect of this collection of information, including suggestions for reducing this burden to Department of Defense, Washington Headquarters Services, Directorate for Information Operations and Reports (0704-0188), 1215 Jefferson Davis Highway, Suite 1204, Arlington, VA 22202-4302. Respondents should be aware that notwithstanding any other provision of law, no person shall be subject to any penalty for failing to comply with a collection of information if it does not display a currently valid OMB control number. **PLEASE DO NOT RETURN YOUR FORM TO THE ABOVE ADDRESS.**

1. REPORT DATE February 2021		2. REPORT TYPE Final Report		3. DATES COVERED 01May2019-31Oct2020	
4. TITLE AND SUBTITLE Mitigating the Gastrointestinal Acute Radiation Syndrome by Blocking Calcium/Calmodulin-Dependent Protein Kinase Kinase 2				5a. CONTRACT NUMBER	
				5b. GRANT NUMBER W81XWH-19-1-0170	
				5c. PROGRAM ELEMENT NUMBER	
6. AUTHOR(S) Chang-Lung Lee E-Mail:chang-lung.lee@duke.edu				5d. PROJECT NUMBER	
				5e. TASK NUMBER	
				5f. WORK UNIT NUMBER	
7. PERFORMING ORGANIZATION NAME(S) AND ADDRESS(ES) Duke University 2200 W MAIN ST STE 710 DURHAM NC 27708-4677				8. PERFORMING ORGANIZATION REPORT NUMBER	
9. SPONSORING / MONITORING AGENCY NAME(S) AND ADDRESS(ES) U.S. Army Medical Research and Development Command Fort Detrick, Maryland 21702-5012				10. SPONSOR/MONITOR'S ACRONYM(S)	
				11. SPONSOR/MONITOR'S REPORT NUMBER(S)	
12. DISTRIBUTION / AVAILABILITY STATEMENT Approved for Public Release; Distribution Unlimited					
13. SUPPLEMENTARY NOTES					
14. ABSTRACT The gastrointestinal acute radiation syndrome (GI-ARS) occurs after high dose total-body or abdominal radiation exposure, which induces extensive damage to crypt stem cells of the small intestines. Severe damage to intestinal stem cells impairs regeneration of the intestinal epithelium, which can result in atrophy of the villi, loss of mucosal barrier, and sepsis. With growing concern over a mass casualty scenario caused by a nuclear attack, it is imperative to develop novel medical countermeasures that mitigate the GI-ARS. Therefore, this project is highly relevant to the health care needs of military service members because currently there is no FDA-approved drug to mitigate the gastrointestinal syndrome induced by accidental exposure to ionizing radiation. Our preliminary data suggested that deletion of calcium/calmodulin-dependent protein kinase kinase 2 (CaMKK2) markedly protected mice from the GI-ARS induced by partial body irradiation. The <u>overall goal</u> of this study is to define cellular mechanisms by which CaMKK2 regulates the GI-ARS and evaluate the effects of a small molecule CaMKK2 inhibitor STO-609 on mitigating the GI-ARS when administered after radiation exposure. Together, we anticipate that the outcomes from this Discovery Award will provide a foundation that we can build upon to develop a full research program that defines molecular mechanisms by which CaMKK2 functions to regulate the regeneration of the GI epithelium after radiation injury.					
15. SUBJECT TERMS					
16. SECURITY CLASSIFICATION OF:			17. LIMITATION OF ABSTRACT Unclassified	18. NUMBER OF PAGES 11	19a. NAME OF RESPONSIBLE PERSON USAMRMC
a. REPORT Unclassified	b. ABSTRACT Unclassified	c. THIS PAGE Unclassified			19b. TELEPHONE NUMBER (include area code)

TABLE OF CONTENTS

	<u>Page</u>
1. Introduction	1
2. Keywords	1
3. Accomplishments	1
4. Impact	5
5. Changes/Problems	6
6. Products	6
7. Participants & Other Collaborating Organizations	7
8. Special Reporting Requirements	8
9. Appendices	8

1. INTRODUCTION:

The gastrointestinal acute radiation syndrome (GI-ARS) occurs after high dose total-body or abdominal radiation exposure, which induces extensive damage to crypt stem cells of the small intestines. Severe damage to intestinal stem cells impairs regeneration of the intestinal epithelium, which can result in atrophy of the villi, loss of mucosal barrier, and sepsis. With growing concern over a mass casualty scenario caused by a nuclear attack, it is imperative to develop novel medical countermeasures that mitigate the GI-ARS. Therefore, this project is highly relevant to the health care needs of military service members because currently there is no FDA-approved drug to mitigate the gastrointestinal syndrome induced by accidental exposure to ionizing radiation. Our preliminary data suggested that deletion of calcium/calmodulin-dependent protein kinase kinase 2 (CaMKK2) markedly protected mice from the GI-ARS induced by partial body irradiation. The overall goal of this study is to define cellular mechanisms by which CaMKK2 regulates the GI-ARS and evaluate the effects of a small molecule CaMKK2 inhibitor STO-609 on mitigating the GI-ARS when administered after radiation exposure. Together, we anticipate that the outcomes from this Discovery Award will provide a foundation that we can build upon to develop a full research program that defines molecular mechanisms by which CaMKK2 functions to regulate the regeneration of the GI epithelium after radiation injury.

2. KEYWORDS:

CaMKK2: calcium/calmodulin-dependent protein kinase kinase 2

GFP: green fluorescent protein

GI-ARS: gastrointestinal acute radiation syndrome

LD_{50/10}: lethal dose 50 within 10 days

SBI: sub-total-body irradiation

3. ACCOMPLISHMENTS:

- **What were the major goals of the project?**

There are no significant changes to the major goals of the project as we originally proposed.

Milestone(s) for Specific Aim 1

- Our results will reveal the role of CaMKK2 in regulating the development of the G-ARS, the restoration of the GI mucosal barrier, the regeneration of the GI epithelium as well as cell death and proliferation of the crypt epithelial cells.

Milestone(s) for Specific Aim 2

- Our results will reveal the critical cell type in which CaMKK2 functions to regulate the GI-ARS.

Milestone(s) for Specific Aim 3

- Our results will identify STO-609 as a novel medical countermeasure against the GI-ARS when administered after irradiation
- **What was accomplished under these goals?**

Specific Aim 1: Evaluate the impacts of knocking out CaMKK2 on the regeneration of the GI epithelium.

Examine the effects of deleting *Camkk2* on the GI-ARS

To investigate the role of CaMKK2 in regulating the gastrointestinal acute radiation syndrome (GI-ARS), we used mice in which *Camkk2* is deletion in the germline (*Camkk2*^{-/-}). To minimize the effect of genetic background, we performed GI-ARS experiments by comparing *Camkk2*^{-/-} mice to their *Camkk2*^{+/-} littermates. We exposed both male and female *Camkk2*^{-/-} and *Camkk2*^{+/-}

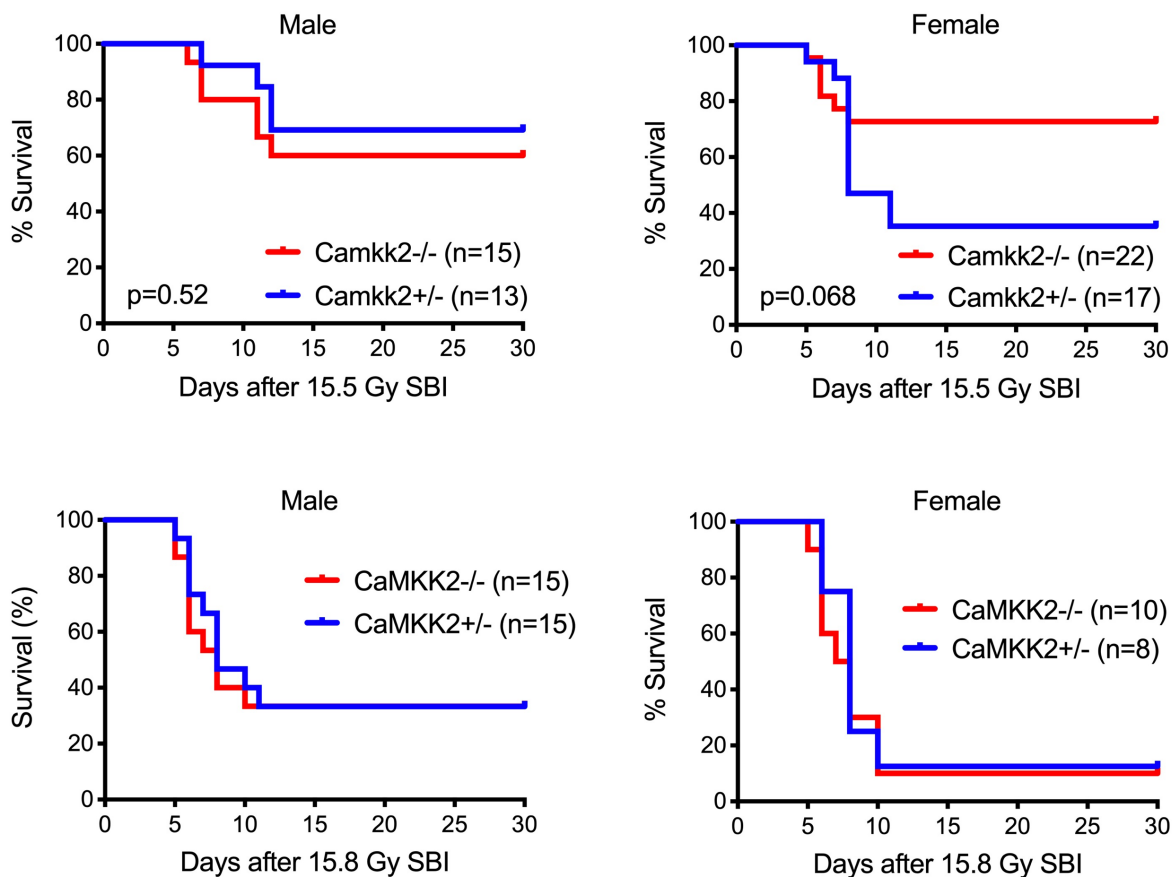


Figure 1. Deletion of *Camkk2* may protect female mice from the GI-ARS. Kaplan-Meier survival analysis of 8 to 10-week-old *CaMKK2*^{-/-} and *Camkk2*^{+/-} littermates after 15.5 and 15.8 Gy SBI. *P* value was calculated by log-rank test.

mice to 15.5 Gy and 15.8 Gy SBI, respectively. These mice were followed for the development of GI-ARS up to 30 days after irradiation. Our results showed that male *Camkk2^{-/-}* mice developed the GI-ARS at a similar percentage as their *Camkk2^{+/-}* littermates following 15.5 Gy and 15.8 Gy SBI. However, female *Camkk2^{-/-}* mice appeared to be more resistant to the GI-ARS compared to their *Camkk2^{+/-}* littermates following 15.5 Gy SBI, although the difference is not statistically significant ($p=0.068$) (**Figure 1**). These data suggest that CaMKK2 may modulate the GI-ARS in a sex-specific manner.

Examine the effects of *Camkk2* knockout on the regeneration of intestinal crypt epithelial cells after irradiation

To examine the role of CaMKK2 in regulating the regeneration of intestinal crypts after irradiation, we counted the number of BrdU⁺ proliferating crypts 96 hours after 12 Gy SBI. For each mouse, 5 to 10 correctly orientated circumferences that do not contain Peyer’s patches were scored. Our results did not show a difference in the number of BrdU⁺ crypts after 12 Gy SBI between *Camkk2^{+/+}*, *Camkk2^{+/-}*, and *Camkk2^{-/-}* mice (**Figure 2**).

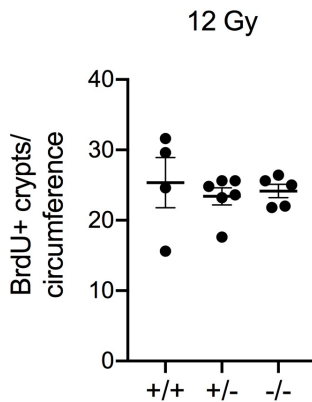


Figure 2. Quantification of surviving crypts in *Camkk2^{+/+}*, *Camkk2^{+/-}*, and *Camkk2^{-/-}* mice 96 hours after 12 Gy SBI. Mice were injected with 100 mg/kg BrdU 2 hours before euthanization to label proliferating cells. A surviving crypt is defined as one that has 10 or more tightly packed BrdU positive cells (excluding Paneth cells). Each dot represents one mouse.

Specific Aim 2: Define the critical cell type in which CaMKK2 functions to regulate the GI-ARS

Examine cells that express CaMKK2 in the small intestine before and after irradiation

To determine cells in the small intestine that express *Camkk2*, we first used CaMKK2-GFP^{Tg} reporter mice to examine GFP⁺ cells by immunohistochemistry (IHC) staining. As shown in

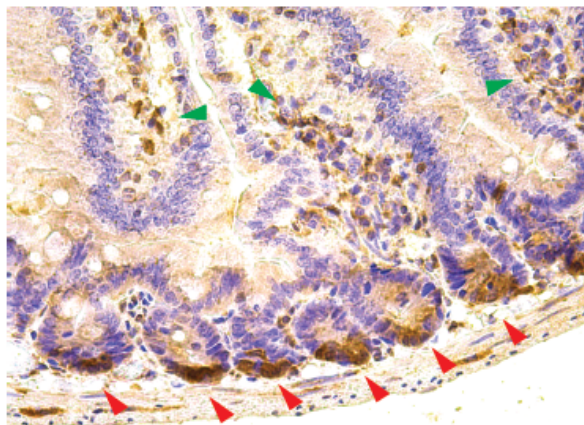


Figure 3. Examination of GFP⁺ cells in the small intestine of CaMKK2-GFP^{Tg} reporter mice. Immunohistochemistry staining shows that the expression of GFP in the small intestine of *Camkk2*-GFP reporter mice is present in intestinal crypt cells (red arrows) and stromal cells in the lamina propria (green arrows). Image represents data from 9 mice.

Figure 3, We observed that GFP was expressed by intestinal crypt cells (red arrows) as well as stroma cells in the lamina propria (green arrows).

To better profile the expression of *Camkk2* in intestinal epithelial cells, we analyzed a single-cell RNAseq (scRNAseq) database of mouse small intestines under homeostasis (Haber et al. 2017). ScRNAseq data indicate that although the overall expression of *Camkk2* in mouse intestines is low, *Camkk2*-expressing cells are highly enriched in a specific type of intestinal epithelial cells called tuft cells (**Figure 4, A and B**). This finding was validated in an independent dataset that compares the transcriptome of sorted intestinal tuft cells to non-tuft epithelial cells (Miller et al. 2018) (**Figure 4C**). Collectively, gene expression data of two independent studies reveal that within intestinal epithelial cells *Camkk2* is preferentially expressed by tuft cells under homeostasis.

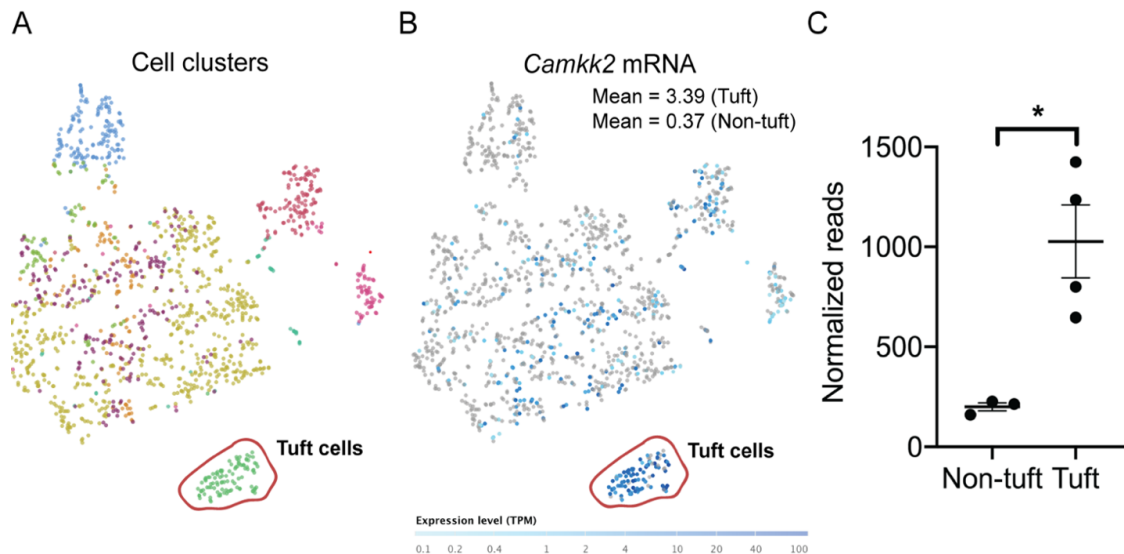


Figure 4. The expression of *Camkk2* in the intestinal epithelium is enriched in tuft cells. (A and B) ScRNAseq data showing that *Camkk2* is preferentially expressed by tuft cells. The mean expression intensity of *Camkk2* is 3.39 and 0.37 in tuft cells and non-tuft epithelial cells, respectively. (C) The transcriptome of intestinal tuft cells, which were sorted based on an IL-25 reporter, was compared to non-tuft epithelial cells. The expression of *Camkk2* in tuft cells is significantly higher than which in non-tuft cells. Each dot represents on mouse. * $P < 0.05$ by two-tailed t-test.

Specific Aim 3: Evaluate the effects of a selective CaMKK2 inhibitor STO-609 on the GI-ARS

Examine the effects of STO-609 on mitigating the GI-ARS when administered after SBI

To develop a medical countermeasure against the GI-ARS, we examined the effect of STO-609, a selective small molecule inhibitor of CaMKK2, on the development of the GI-ARS. Eight weeks old female C57BL/6N mice (Charles River) were exposed to 15.6 and 14.8 Gy SBI. Starting at 24 hours after SBI, mice in the same cage were randomly selected to receive intraperitoneal injections of either STO-609 at 10 $\mu\text{mol/kg}$ body weight or vehicle (10% DMSO in PBS) every 24 hours for 3 consecutive days (**Figure 5, A and B**). In addition, we tested an

alternative treatment protocol of STO-609 by injecting 40 $\mu\text{mol/kg}$ STO-609 at 24 hours and 10 $\mu\text{mol/kg}$ STO-609 at 72 hours after irradiation, respectively (**Figure 5C**). However, our results showed that treatment of STO-609 at the dose and time points that we selected did not improve the survival of mice that developed the GI-ARS.

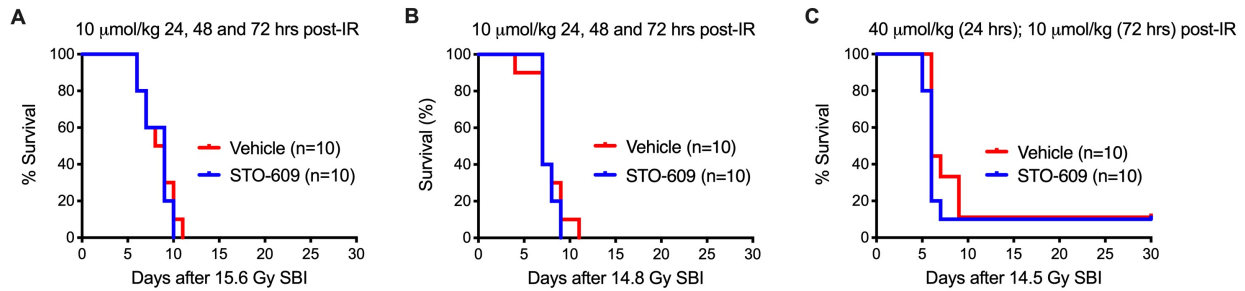


Figure 5. Treatment of STO-609 does not mitigate the GI-ARS in mice. (A and B) Eight weeks old female C57BL/6N mice were exposed to 15.6 or 14.8 Gy SBI. Mice were injected with 10 $\mu\text{mol/kg}$ STO-609 or vehicle (10% DMSO in PBS) 24, 48 and 72 hours after irradiation. (C) Eight weeks old female C57BL/6N mice were exposed to 14.5 Gy SBI. Mice were injected with 40 $\mu\text{mol/kg}$ STO-609 or vehicle at 24 hours and 10 $\mu\text{mol/kg}$ STO-609 or vehicle at 72 hours after irradiation.

What opportunities for training and professional development has the project provided?

- Nothing to Report
- **How were the results disseminated to communities of interest?**
 - Nothing to Report.
- **What do you plan to do during the next reporting period to accomplish the goals?**
 - Our findings from this Discovery Award suggest that deletion of *Camkk2* may modulate the GI-ARS in females. As CaMKK2 is one of the upstream regulators of AMPK, it would be interested in exploring the effect of blocking other regulators of AMPK including LKB1 and TAK1 individually or together on the development of GI-ARS. In addition, it would be important to generate PK/PD data of STO-609 administered via different routes to determine the most effect way for delivering STO-609 to the small intestine.

4. **IMPACT:**

- **What was the impact on the development of the principal discipline(s) of the project?**
 - Our findings suggest that CaMKK2 may modulate the GI-ARS in a sex-specific manner.
- **What was the impact on other disciplines?**

- Nothing to Report.
- **What was the impact on technology transfer?**
 - Nothing to Report.
- **What was the impact on society beyond science and technology?**
 - Nothing to Report.

5. CHANGES/PROBLEMS:

- **Changes in approach and reasons for change**
 - Nothing to Report.
- **Actual or anticipated problems or delays and actions or plans to resolve them**
 - The research operation of my lab was postponed between March to June 2020 because of COVID-19 pandemic. During this shutdown period, we were asked to stop ongoing experiments and decrease the number of mouse cages. Therefore, this incidence caused a significant delay in the experiments that we planned to conduct for this DoD grant. As a result, we did not have enough time to generate sufficient number of mice harboring tissue-specific knockout of *Camkk2* that we would need to obtain conclusive results (Aim 2).
- **Changes that had a significant impact on expenditures**
 - Nothing to Report.
- **Significant changes in use or care of human subjects, vertebrate animals, biohazards, and/or select agents**
 - Nothing to Report.
- **Significant changes in use or care of human subjects**
- **Significant changes in use or care of vertebrate animals.**
- **Significant changes in use of biohazards and/or select agents**

6. PRODUCTS:

- **Publications, conference papers, and presentations**
 - **Journal publications.**

Nothing to Report.

7. PARTICIPANTS & OTHER COLLABORATING ORGANIZATIONS

- What individuals have worked on the project?

Name:	Lee, Chang-Lung
Project Role:	PI
Researcher Identifier (e.g. ORCID ID):	0000-0002-0673-633X
Nearest person month worked:	3.24
Contribution to Project:	Dr. Lee is responsible for designing experiments, overseeing projects and analyzing data in the proposed study.
Funding Support:	N/A

Name:	Racioppi, Luigi
Project Role:	Co-investigator
Researcher Identifier (e.g. ORCID ID):	N/A
Nearest person month worked:	1.2
Contribution to Project:	Dr. Racioppi provided genetic models required to develop the project. He also contributes to experimental design and data analysis.
Funding Support:	N/A

Name:	Hasapis, Stephanie
Project Role:	Lab Research Analyst I
Researcher Identifier (e.g. ORCID ID):	N/A
Nearest person month worked:	4.8
Contribution to Project:	Ms. Hasapis manages mouse colonies as well as performs <i>in vivo</i> and <i>in vitro</i> experiments to study GI-ARS for this project.
Funding Support:	N/A

- **Has there been a change in the active other support of the PD/PI(s) or senior/key personnel since the last reporting period?**
 - Nothing to Report.
- **What other organizations were involved as partners?**
 - Nothing to Report.

8. SPECIAL REPORTING REQUIREMENTS

- **COLLABORATIVE AWARDS:**
- N/A
- **QUAD CHARTS:**
- N/A

9. APPENDICES: N/A