

TERRAIN PHOTOGRAPHS
AMERICAN WORLD WAR BATTLEFIELDS
IN EUROPE

82ND DIVISION

MARBACHE SECTOR,
ST. MIHIEL OFFENSIVE &
MARBACHE SECTOR

AUGUST 17 - SEPTEMBER 20, 1918

PREPARED BY
THE AMERICAN BATTLE MONUMENTS
COMMISSION

PREFACE

THIS album is part of a collection of photographs of the various battlefields in Europe upon which the Armed Forces of the United States were actively engaged during World War I.

These terrain photographs were taken and prepared by the American Battle Monuments Commission, as provided in the act of Congress of March 4, 1923, to complete the historical record of the operations of the American units. The series comprises 69 albums containing 1,396 photographs.

The contents of these albums will be of particular value when studied in conjunction with the Summaries of Operations, prepared by the American Battle Monuments Commission, which relate in detail the combat services of each American division.

On the page preceding the photographs will be found a small-scale key map showing the general operation of which this divisional operation was a part. In the pocket inside the back cover will be found a reprint of a 1:20,000 map, of the type used during the war, showing the operation covered by the photographs in this

album. On this index map have been indicated the position of the camera and the direction in which it was sighted in taking each photograph.

On the page opposite each photograph is a section of the 1:20,000 map of the terrain in the vicinity of that pertaining to the photograph. The white wedge-shaped portion of the map indicates the sector of terrain which actually appears in the picture. The plotted position of the camera and the axis of the picture are shown in blue, the length of the blue line approximately indicating the depth of the view. The circled number corresponds to the number of the photograph, of which the numerals before the dash indicate the division and the numerals after the dash indicate the serial number of the photograph in this division.

Various topographical features visible in the photographs have been indicated by name to facilitate orientation.

Complete sets of these albums have been deposited with the National Archives, the Library of Congress, the Historical Division of the War Department General Staff, and the Command and Staff College.

AMERICAN BATTLE MONUMENTS COMMISSION,

John J. Pershing
CHAIRMAN

NOV 22 1946

82ND DIVISION

MARBACHE SECTOR

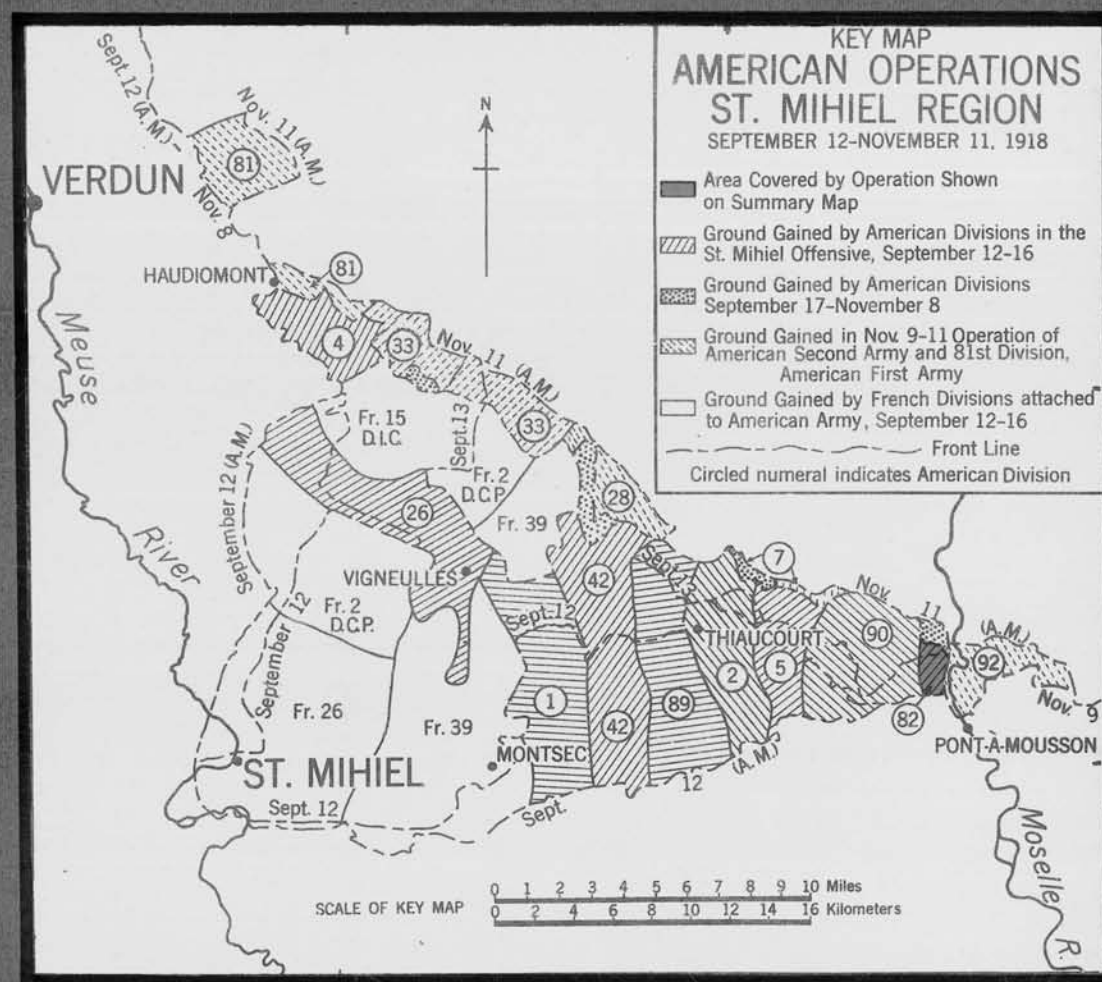
AUGUST 17—SEPTEMBER 11, 1918

ST. MIHIEL OFFENSIVE

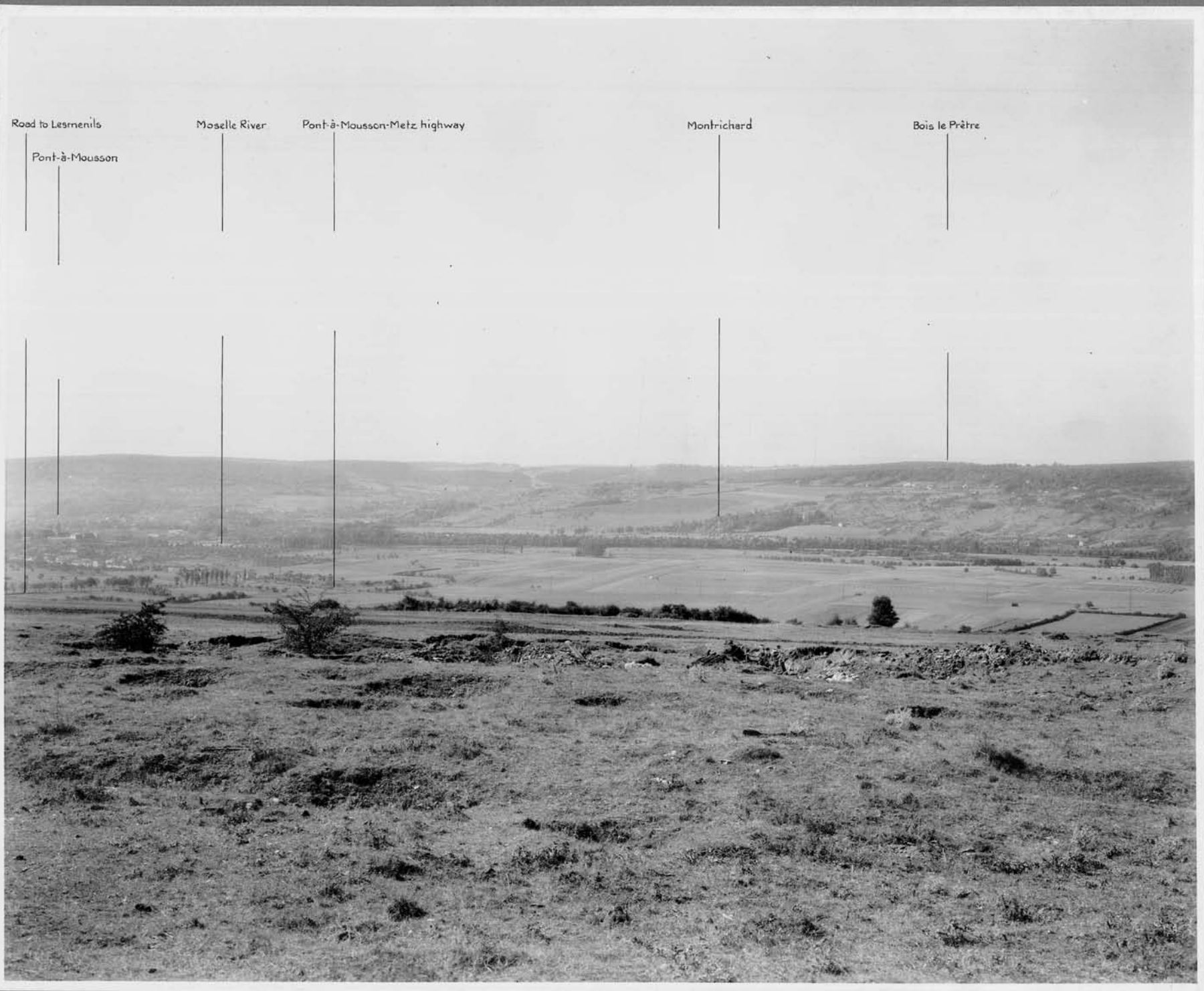
SEPTEMBER 12-16, 1918

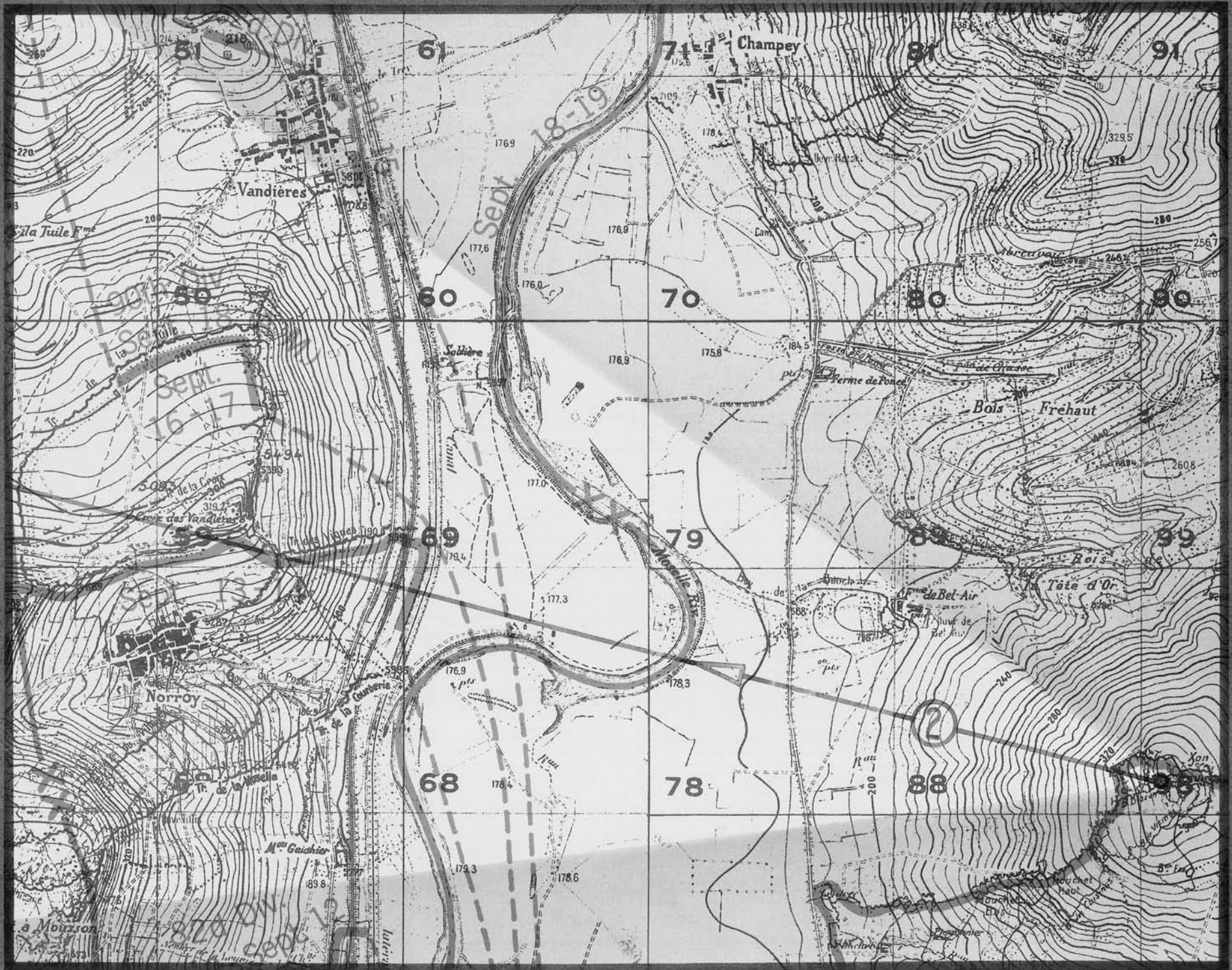
MARBACHE SECTOR

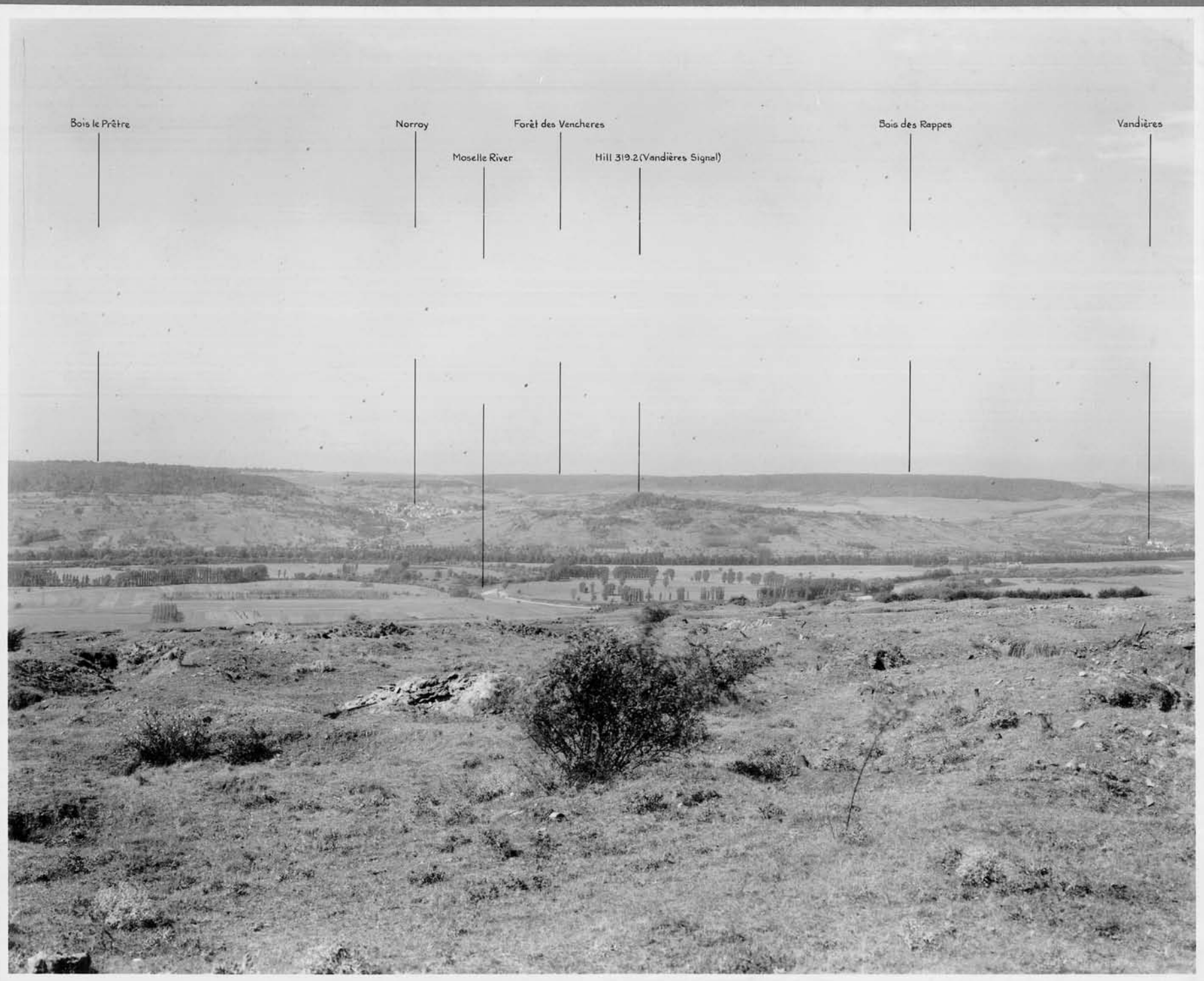
SEPTEMBER 17-20, 1918

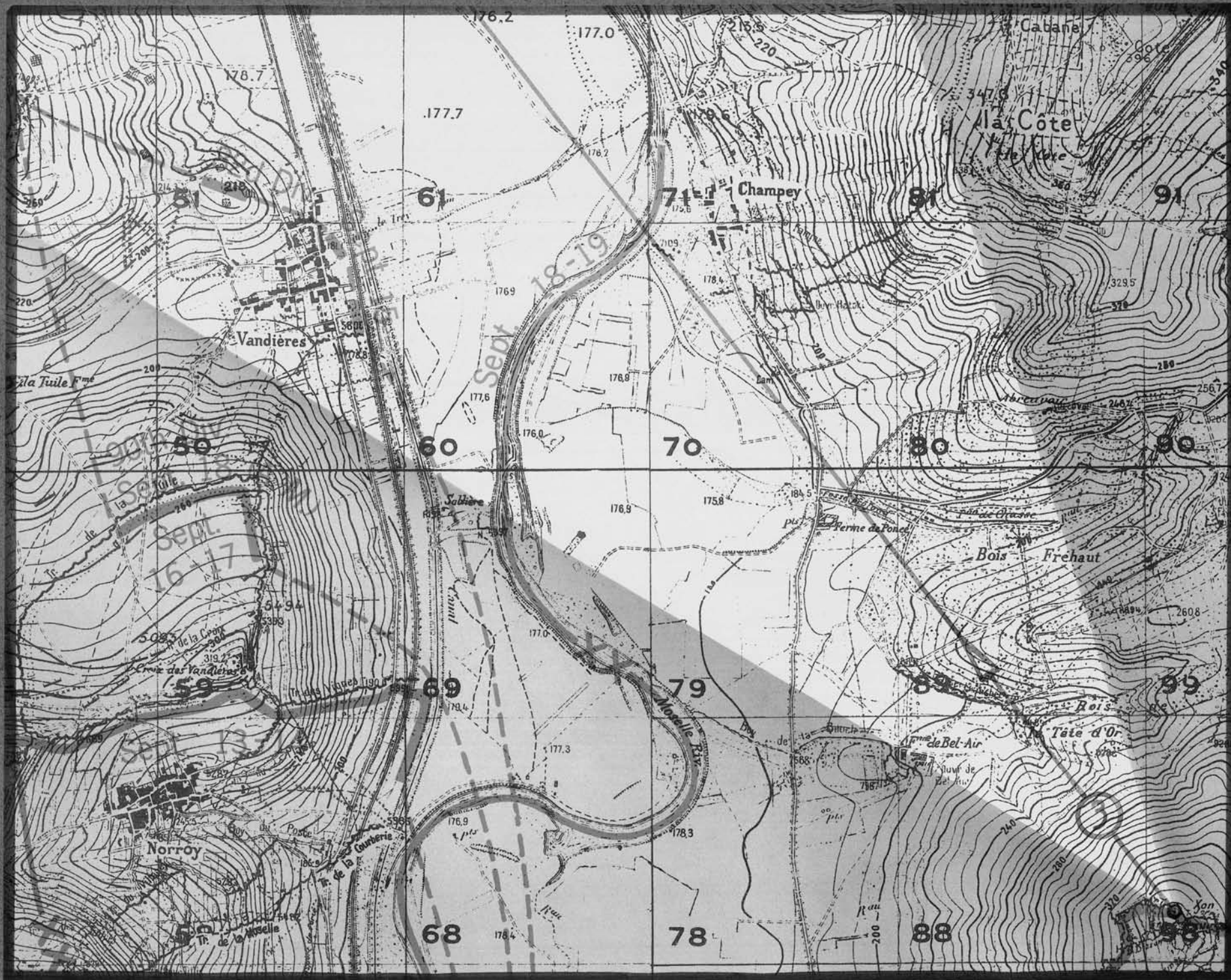




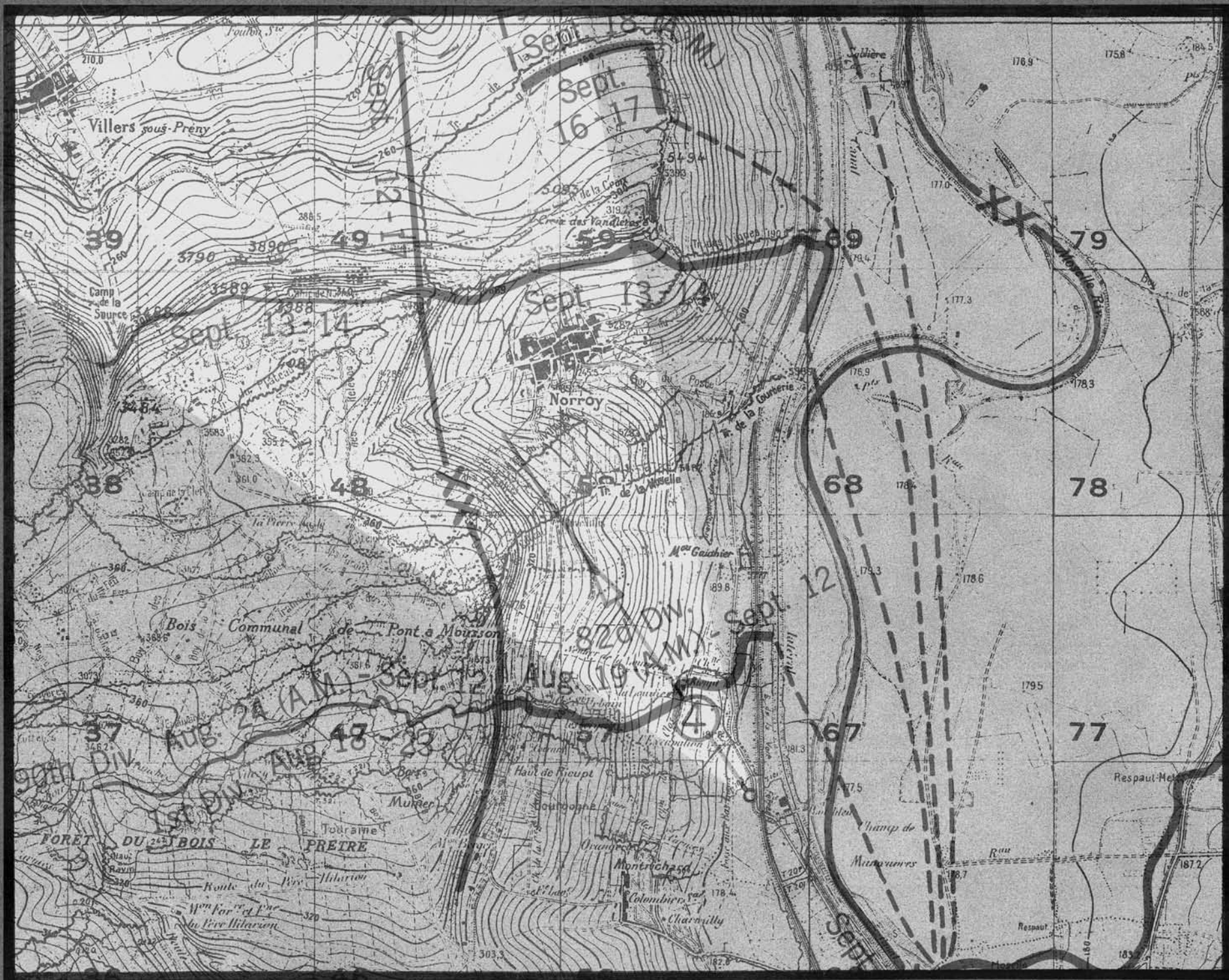












Bois le Prêtre

Pont-à-Mousson-Vandières
rond





Xon Hill

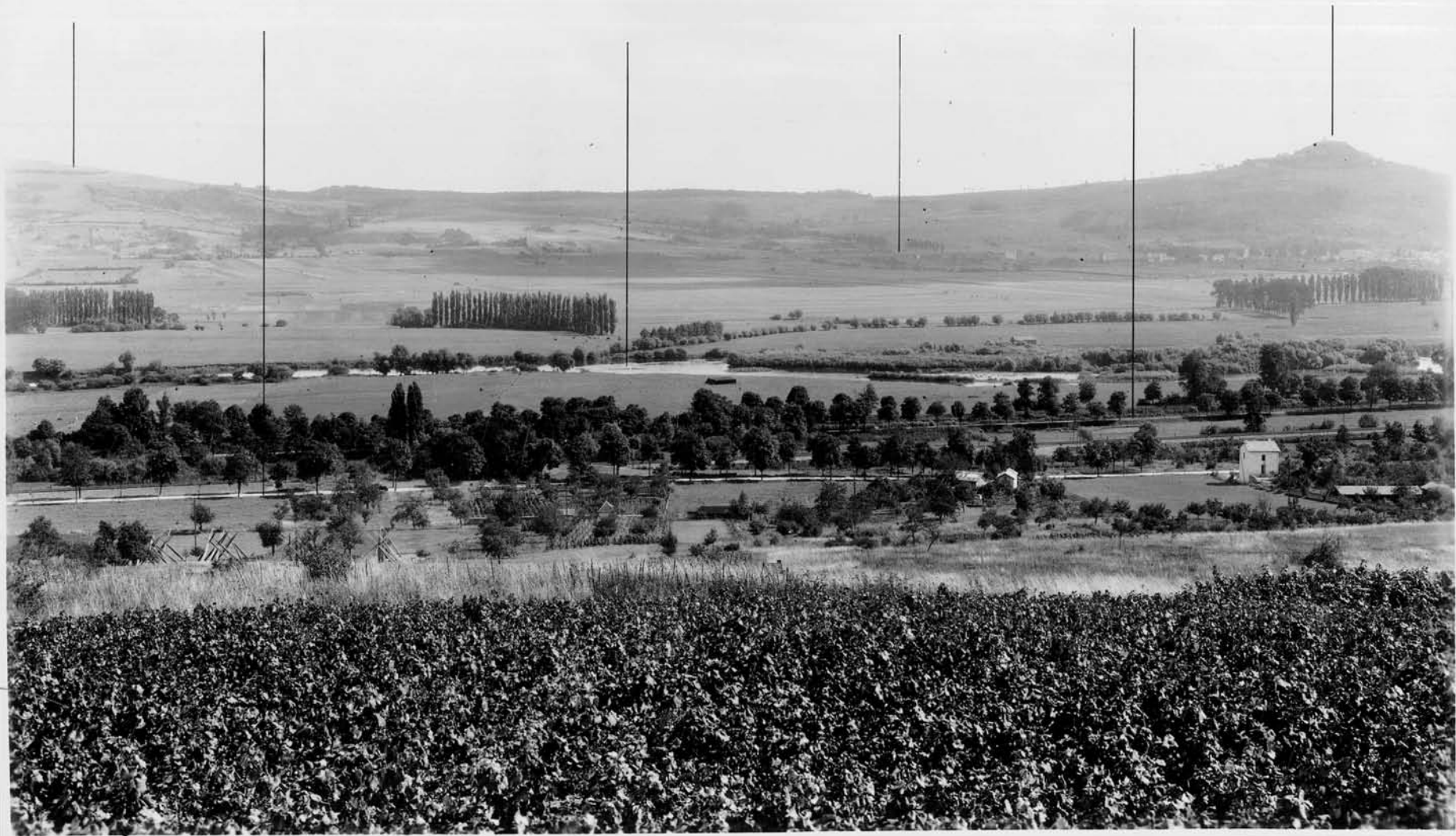
Vandières ~ Pont-a-Mousson road

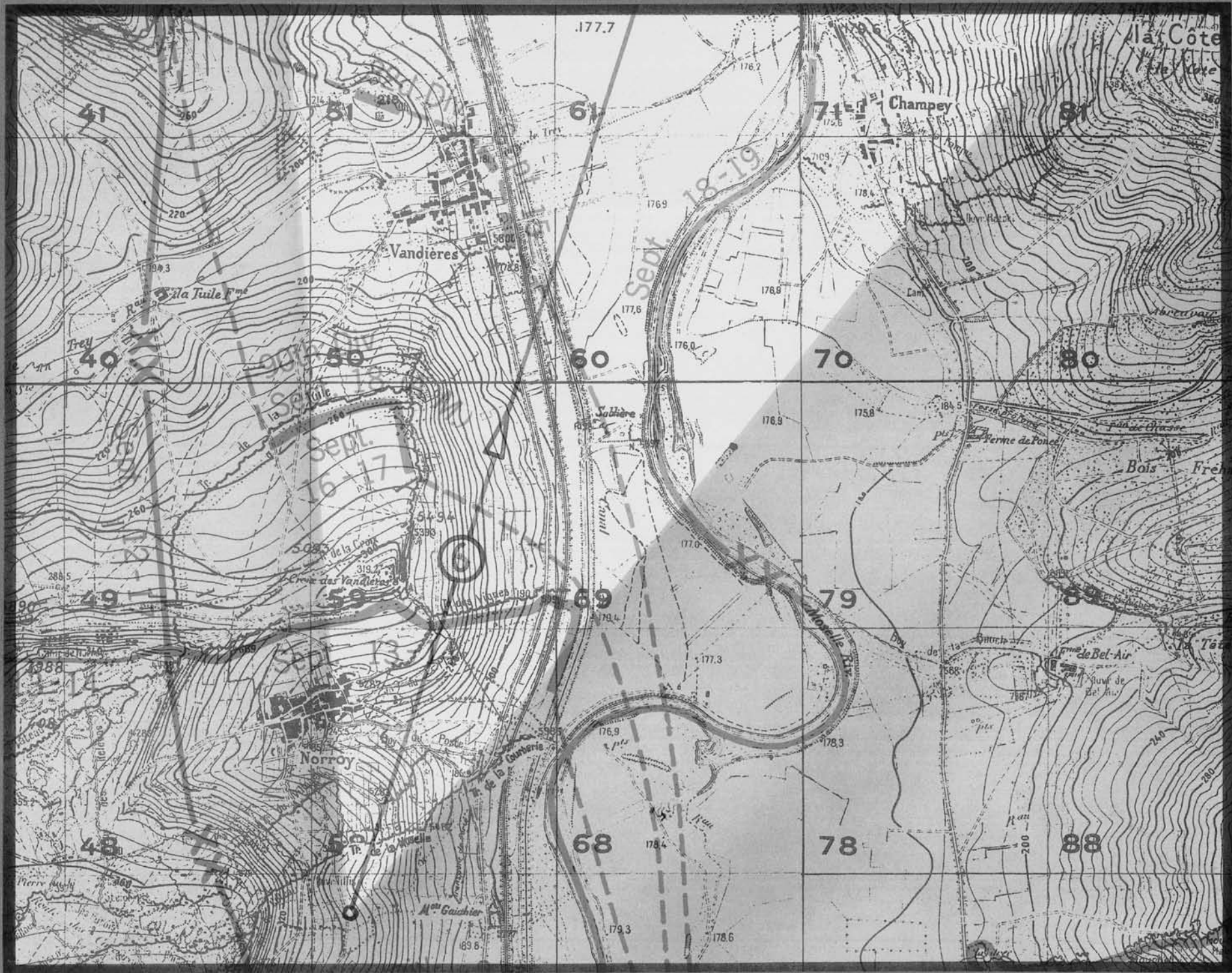
Moselle River

to Lesmenils

Canal

Mousson







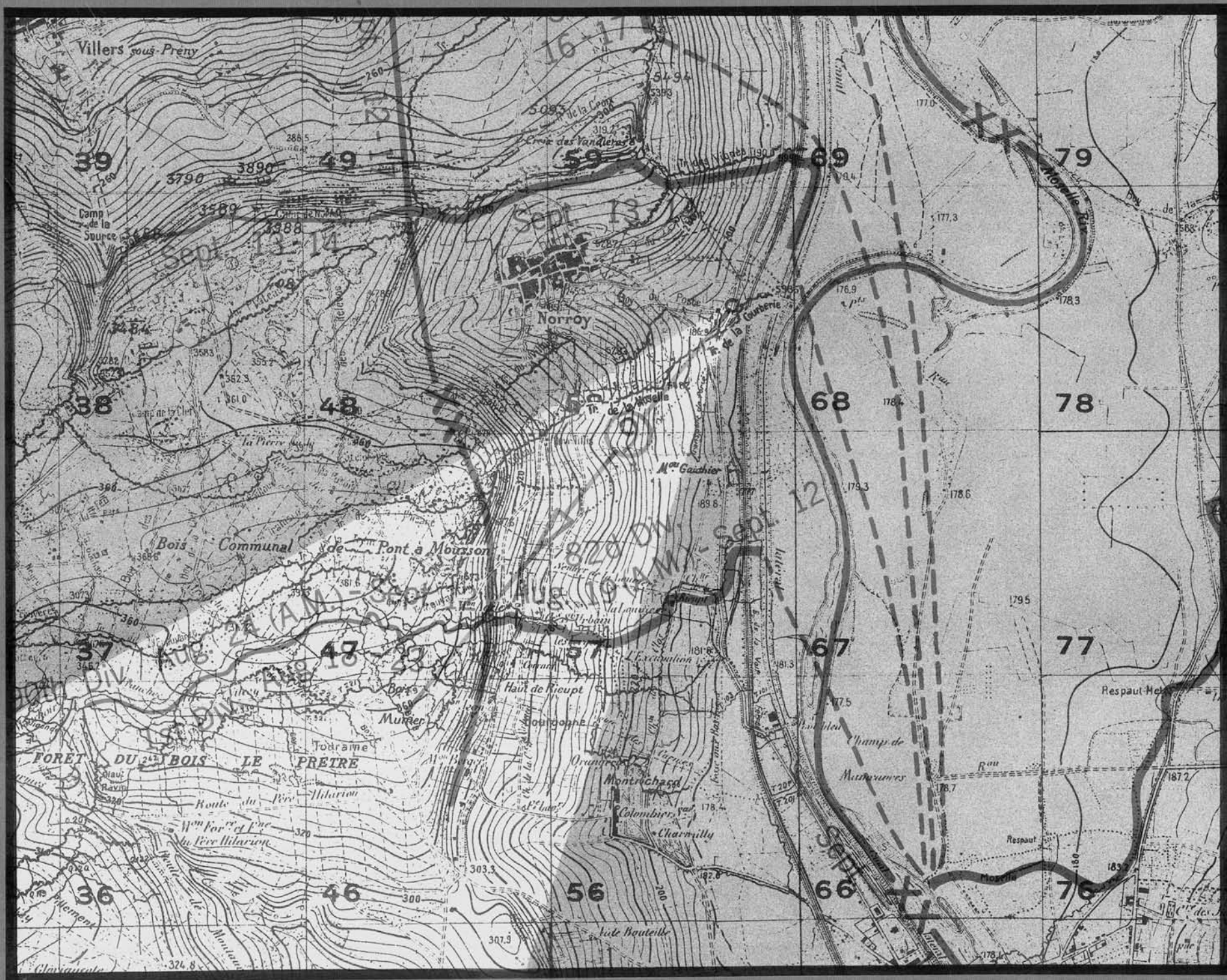
Vandières Signal



82-07

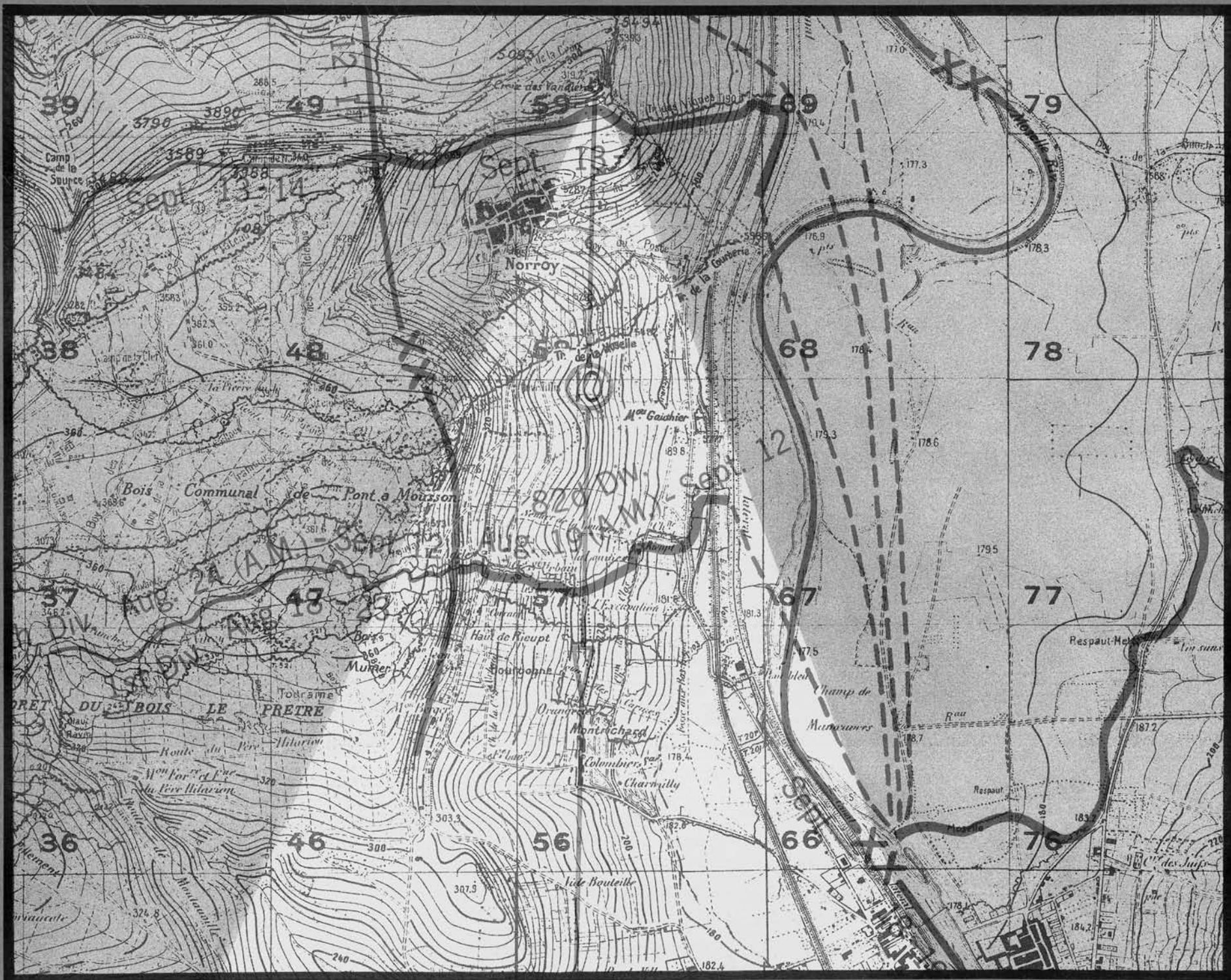


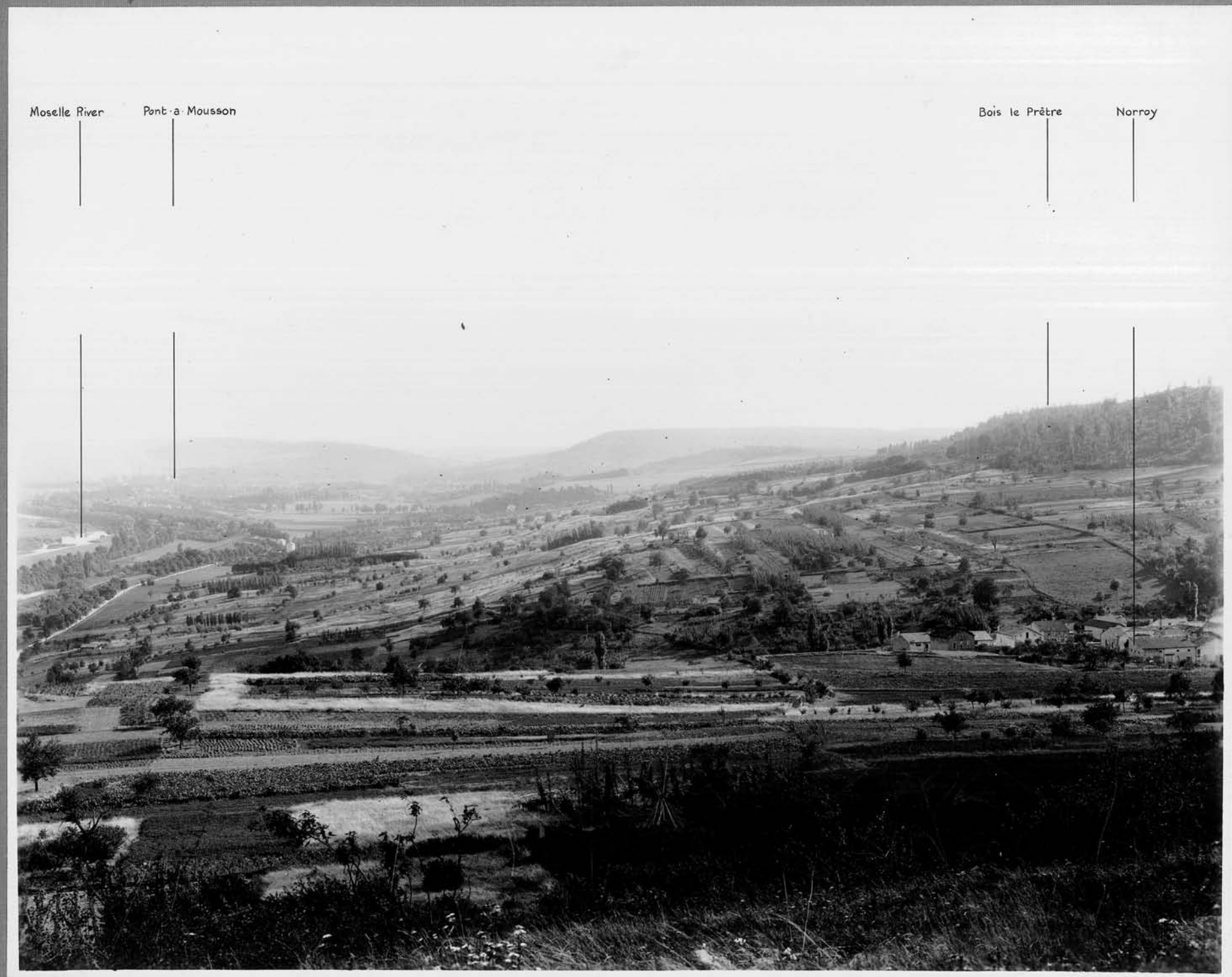
Norray

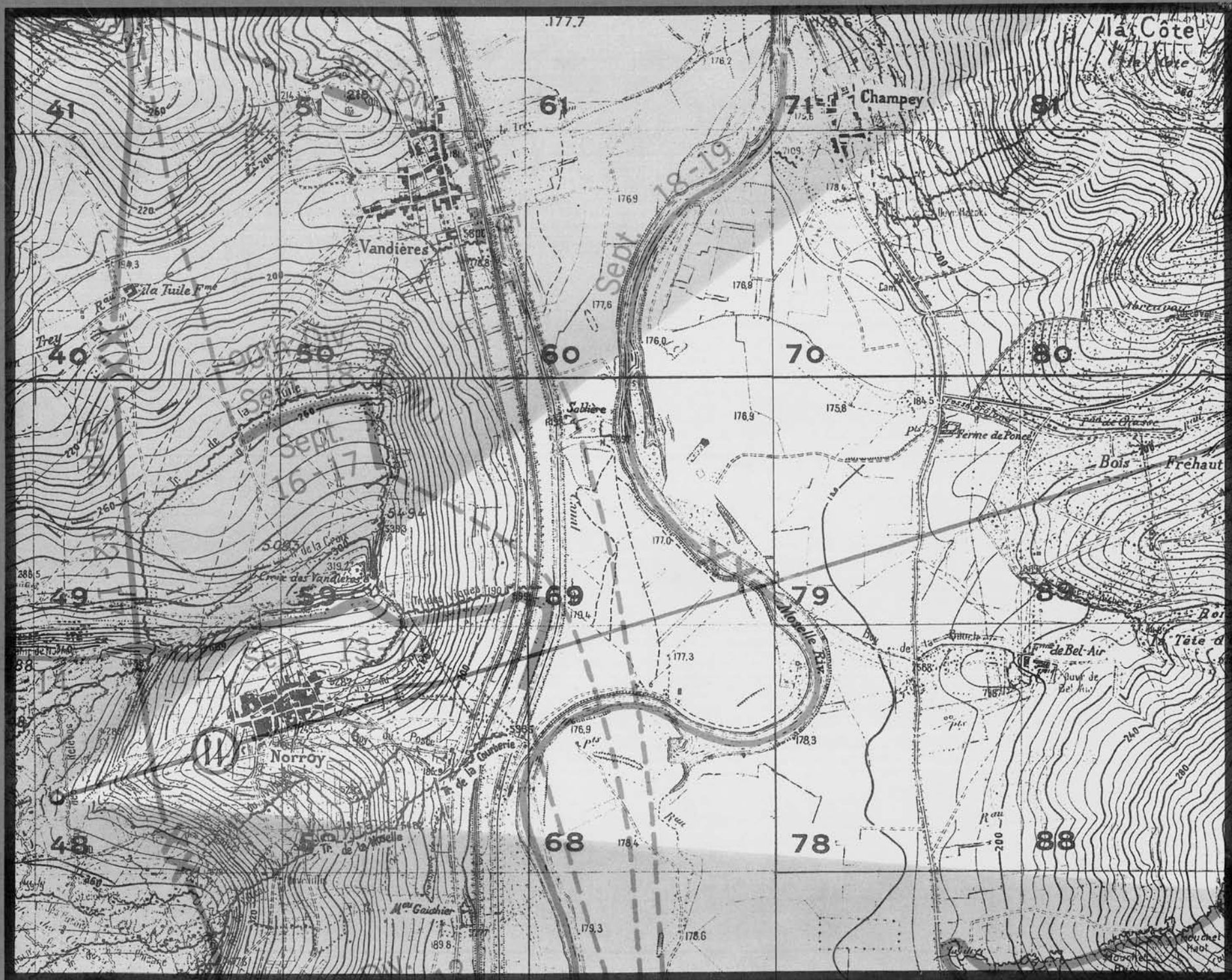


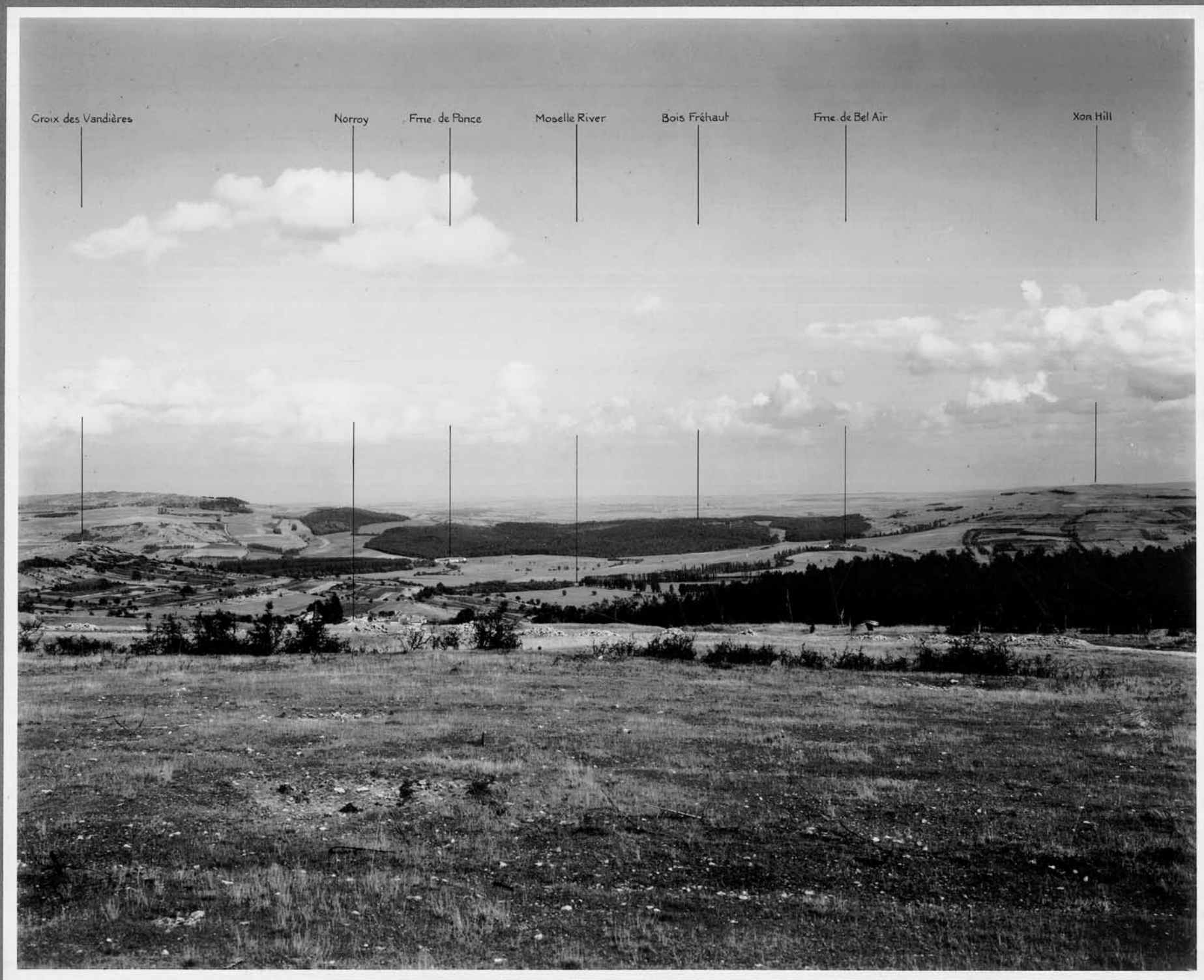


Bois le Prêtre

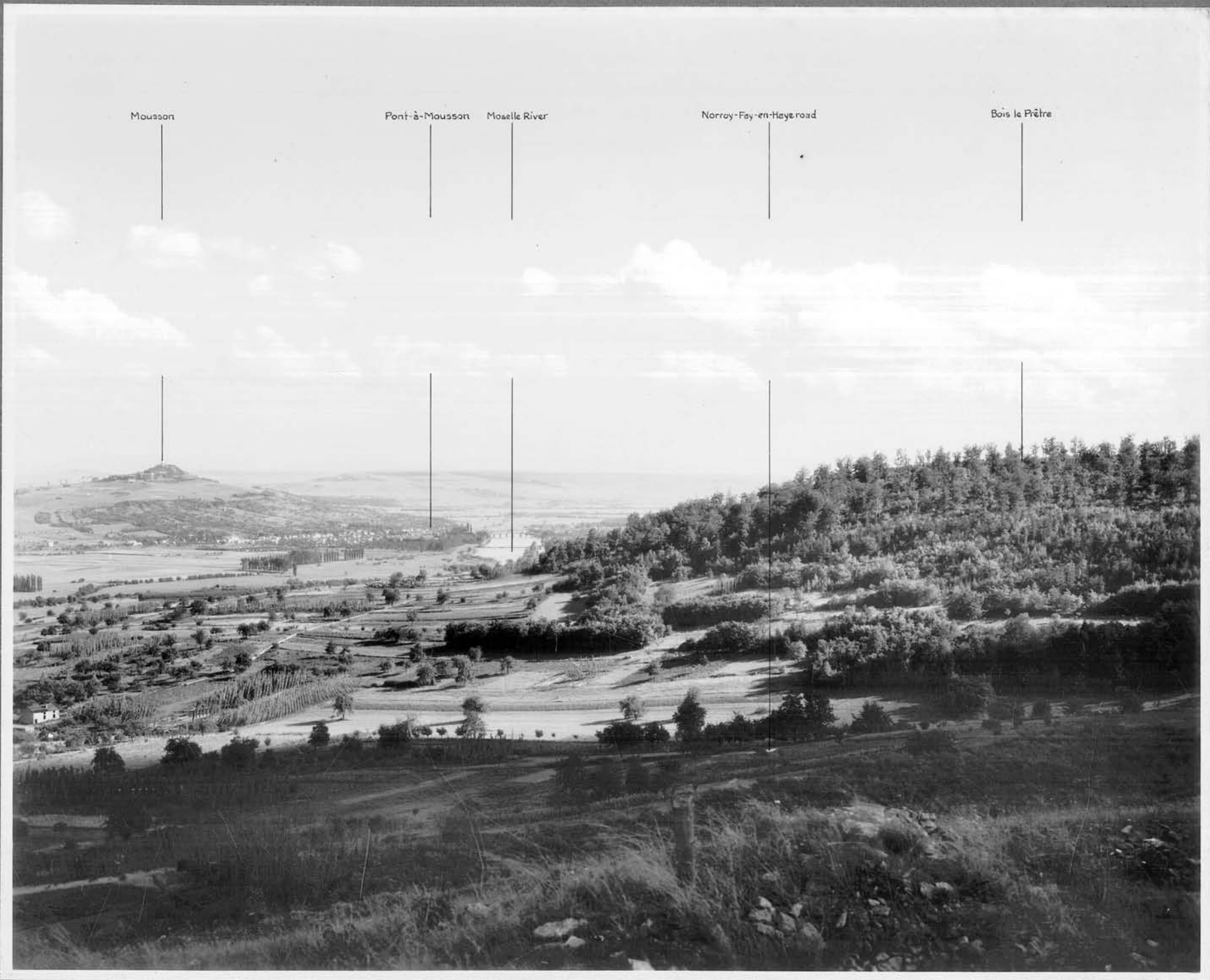












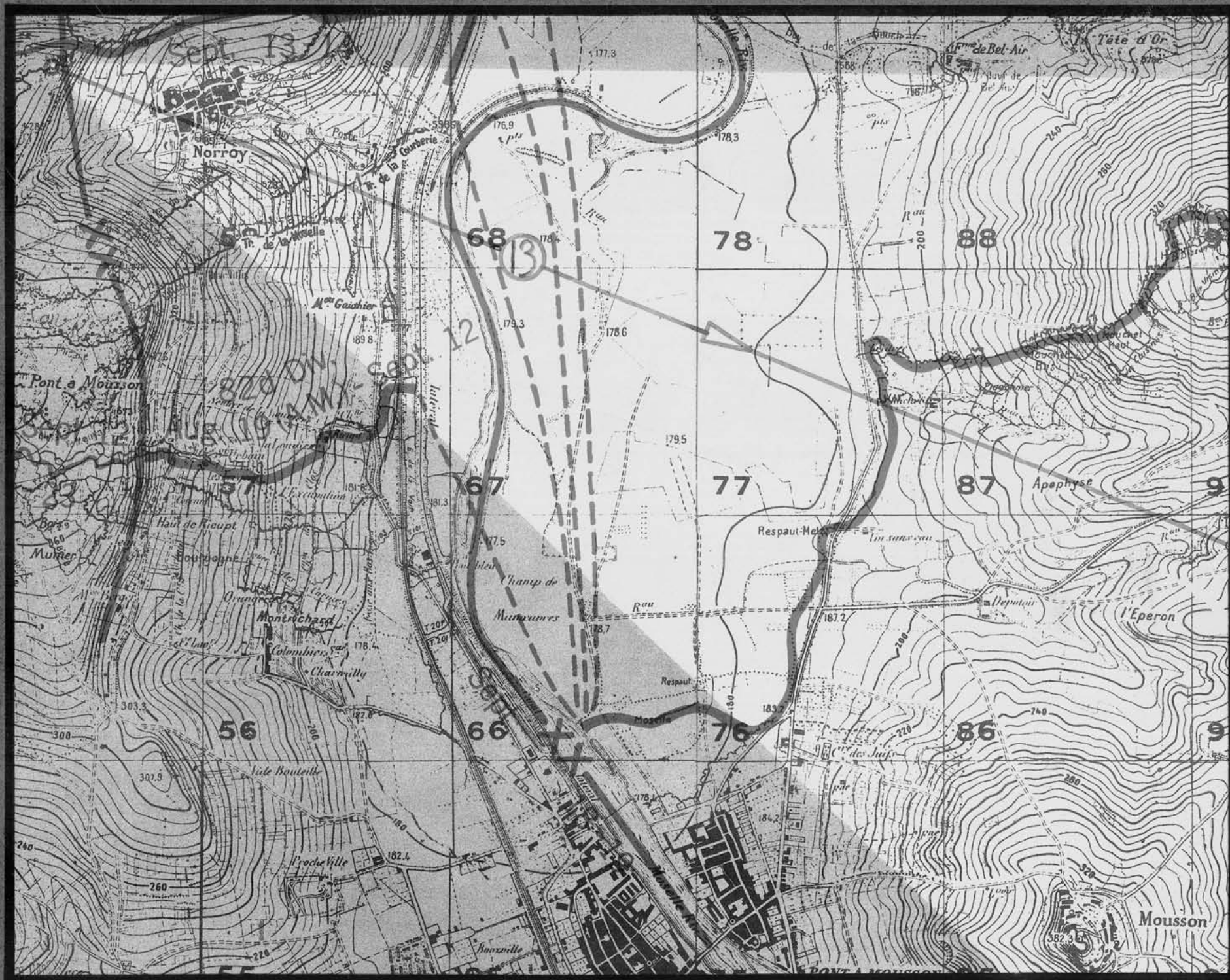
Mousson

Pont-à-Mousson

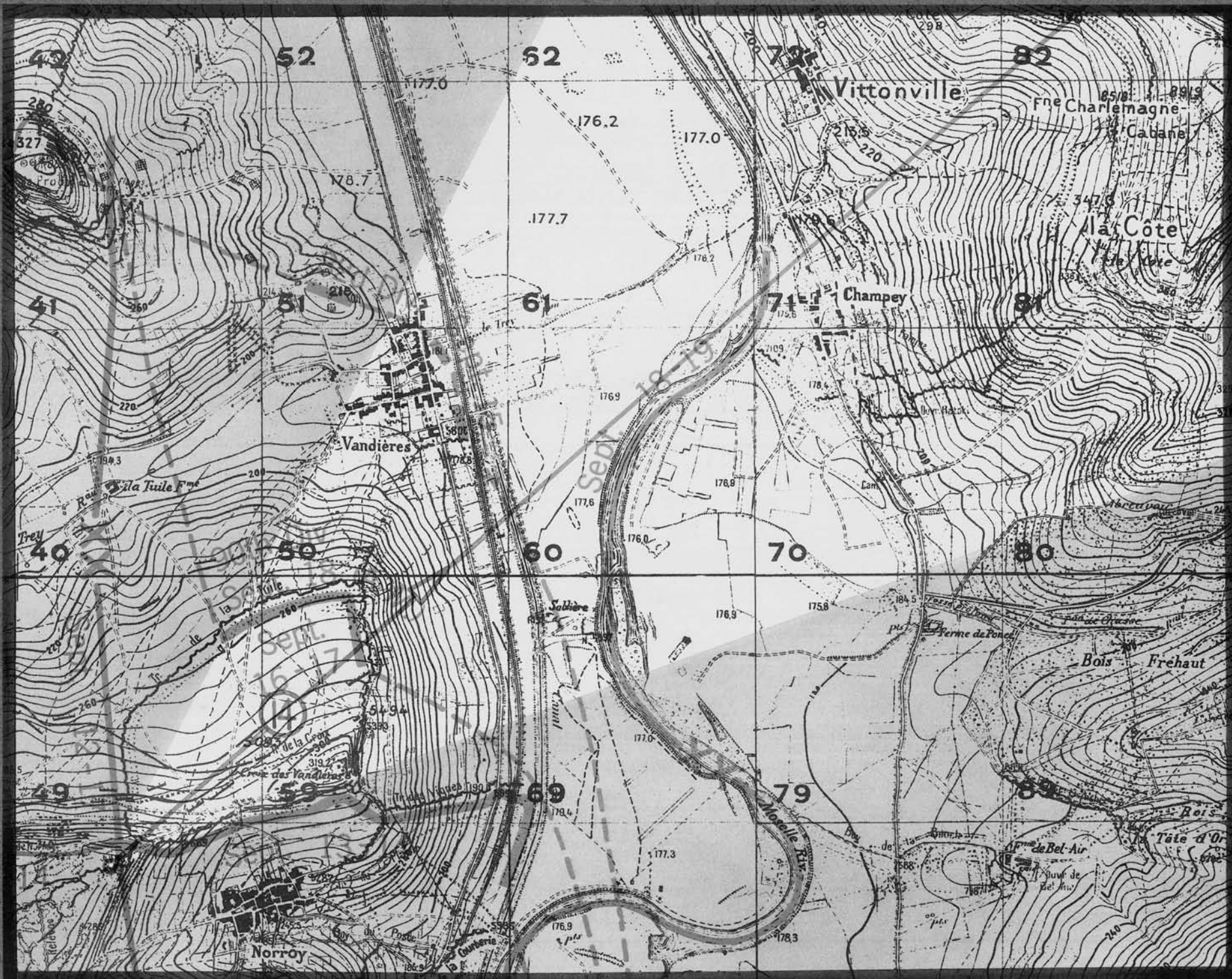
Moselle River

Norroy-Fay-en-Haye road

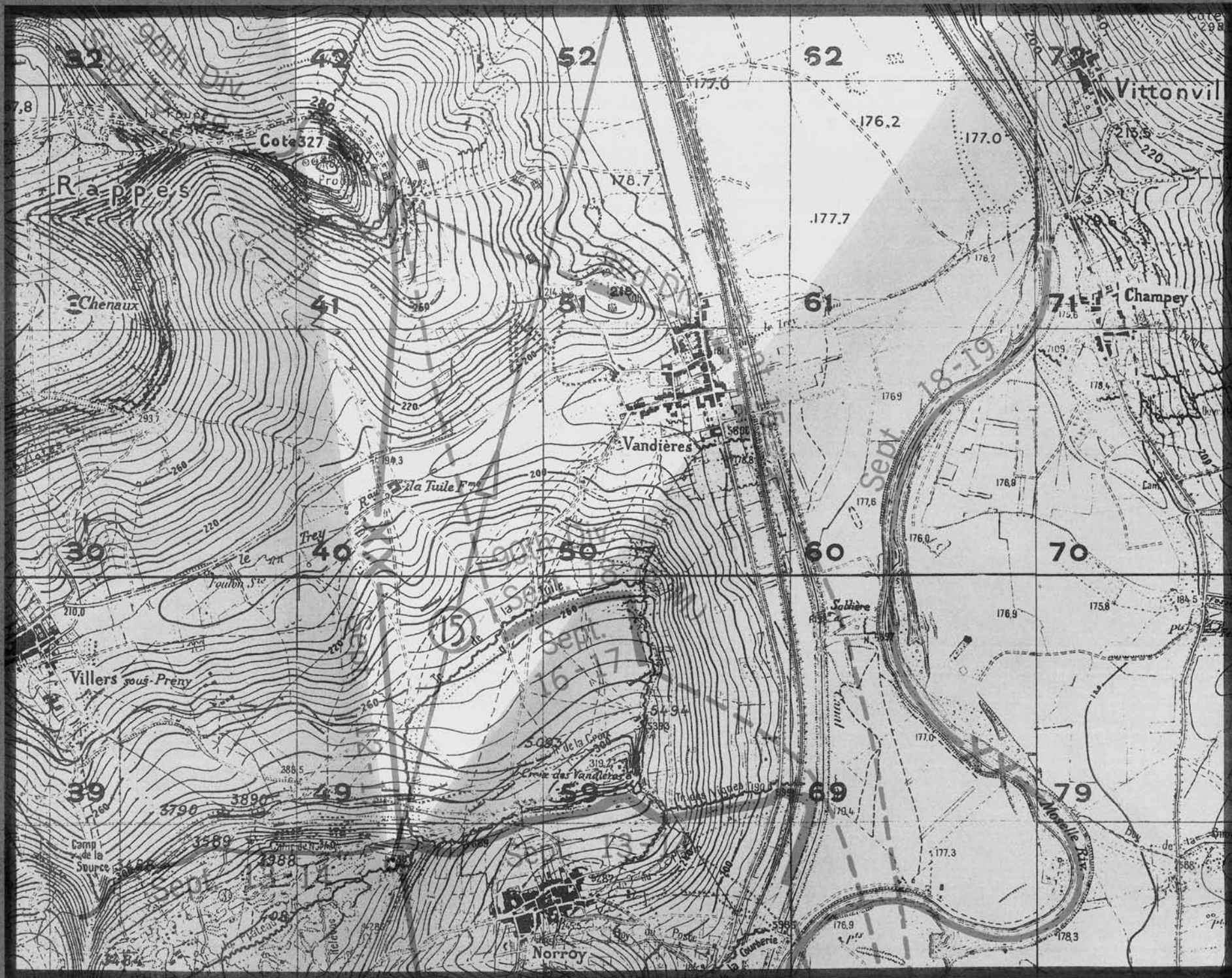
Bois le Prêtre











Hill 327

Villers-Vandières road

Pagny

Arnâville

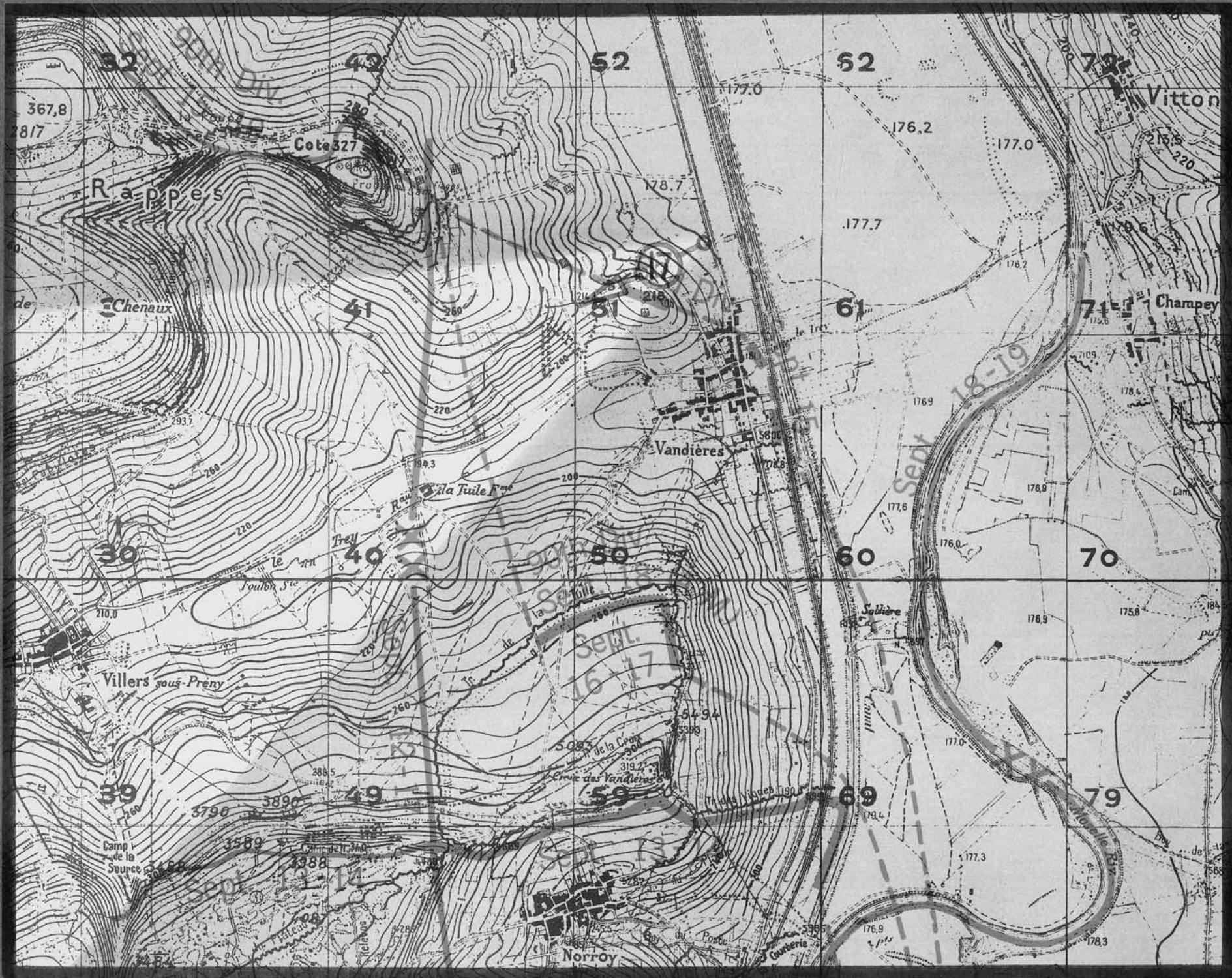
Moselle River

Metz-Port-à-Mousson highway

Vandières

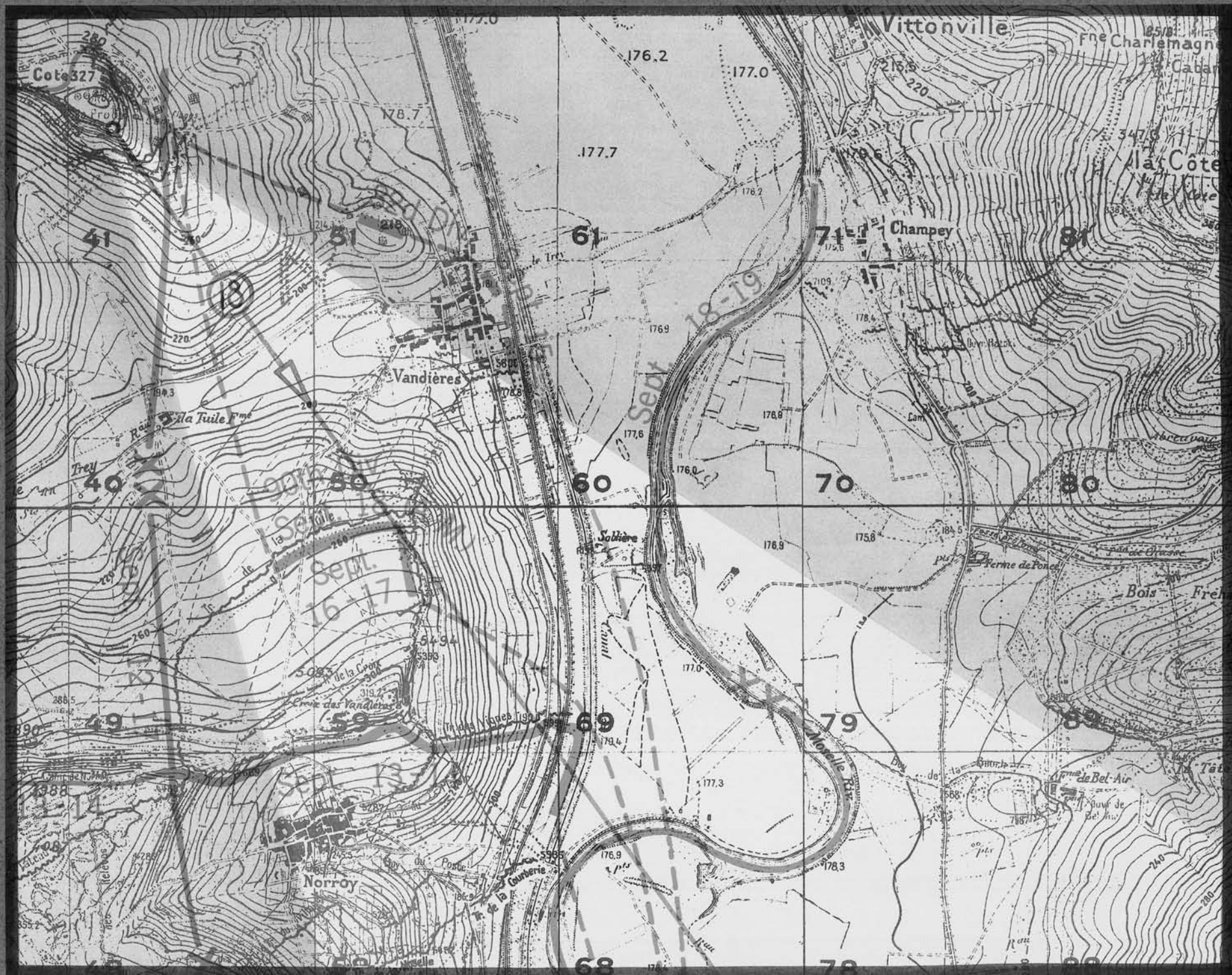






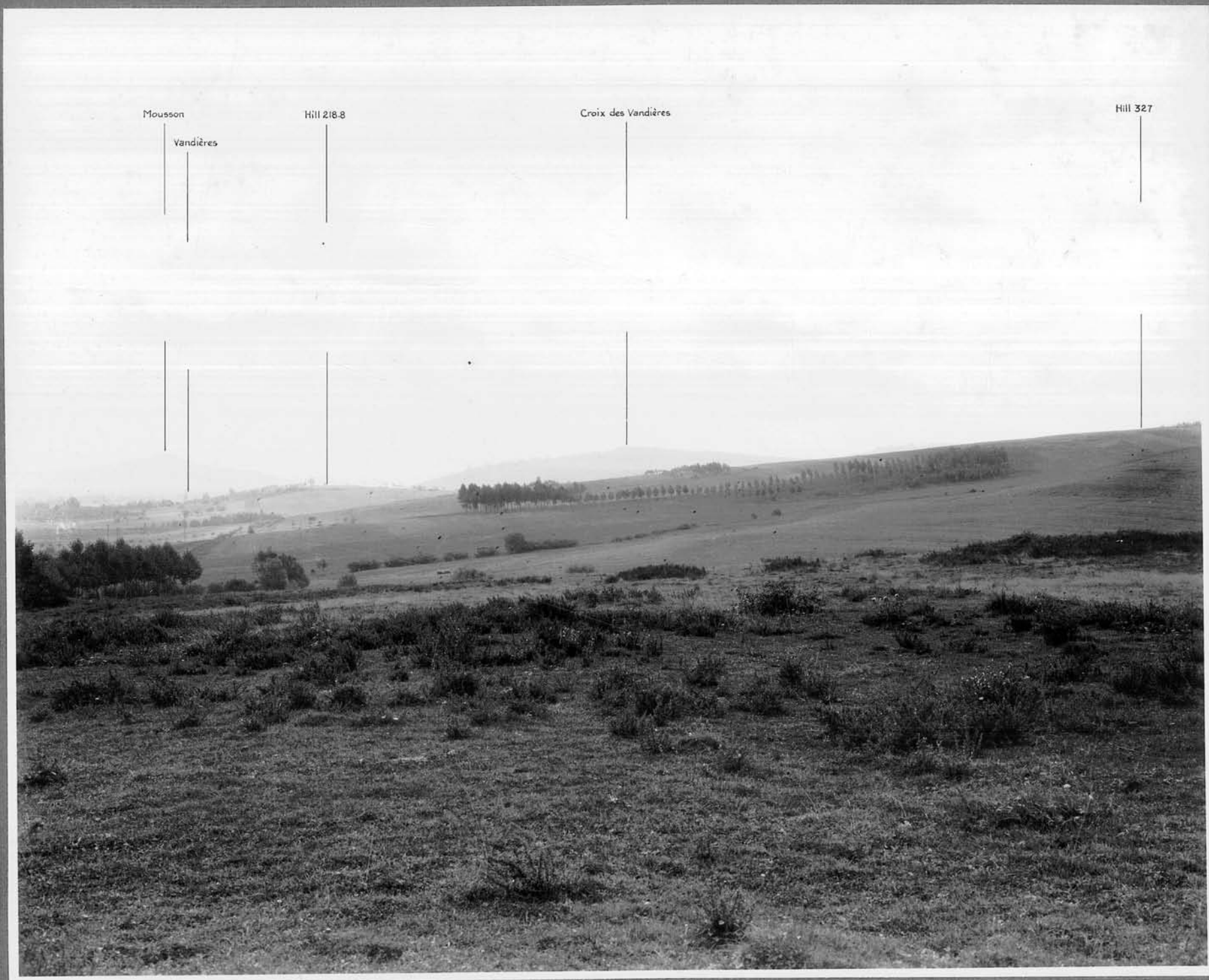


Hill 218-B







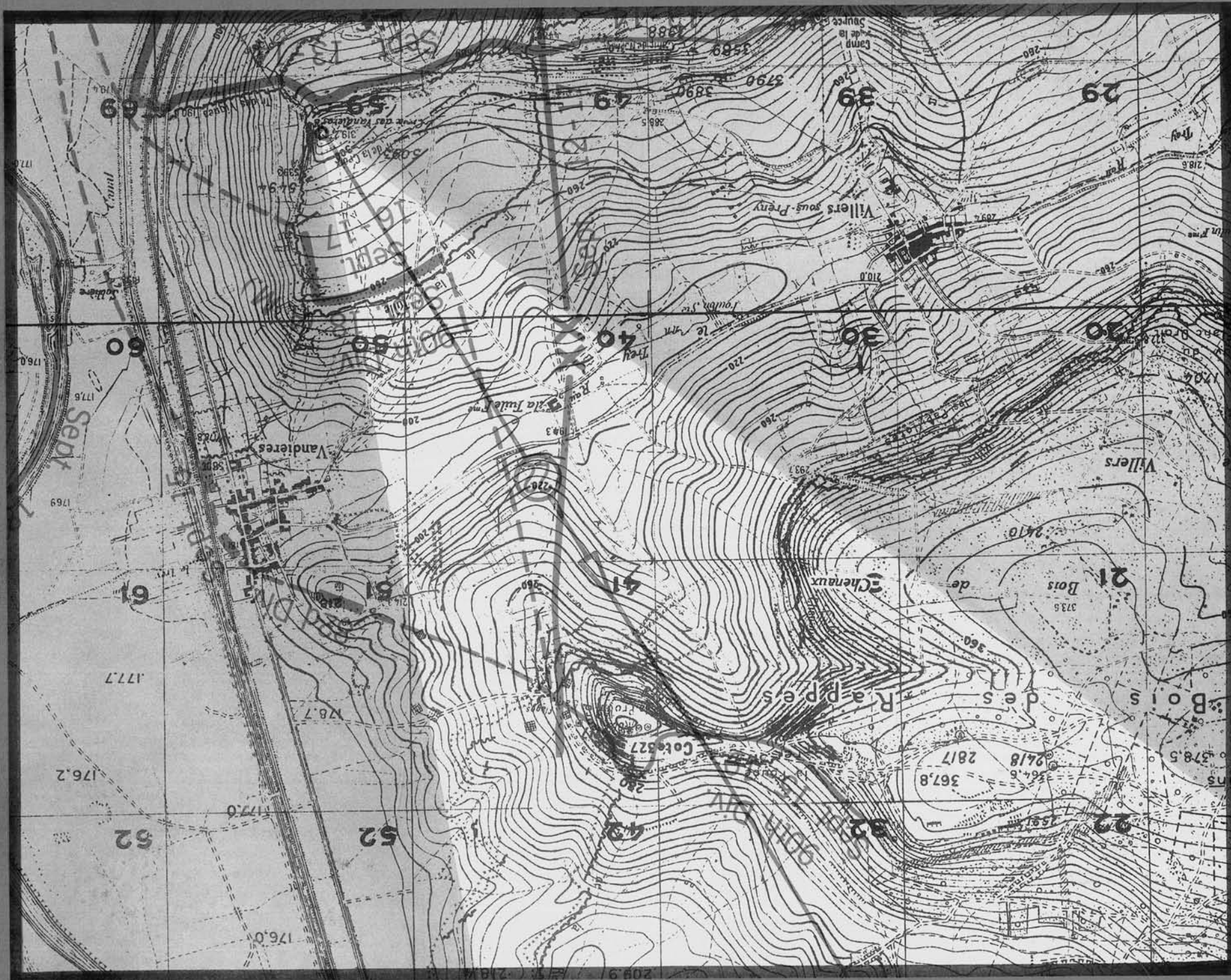


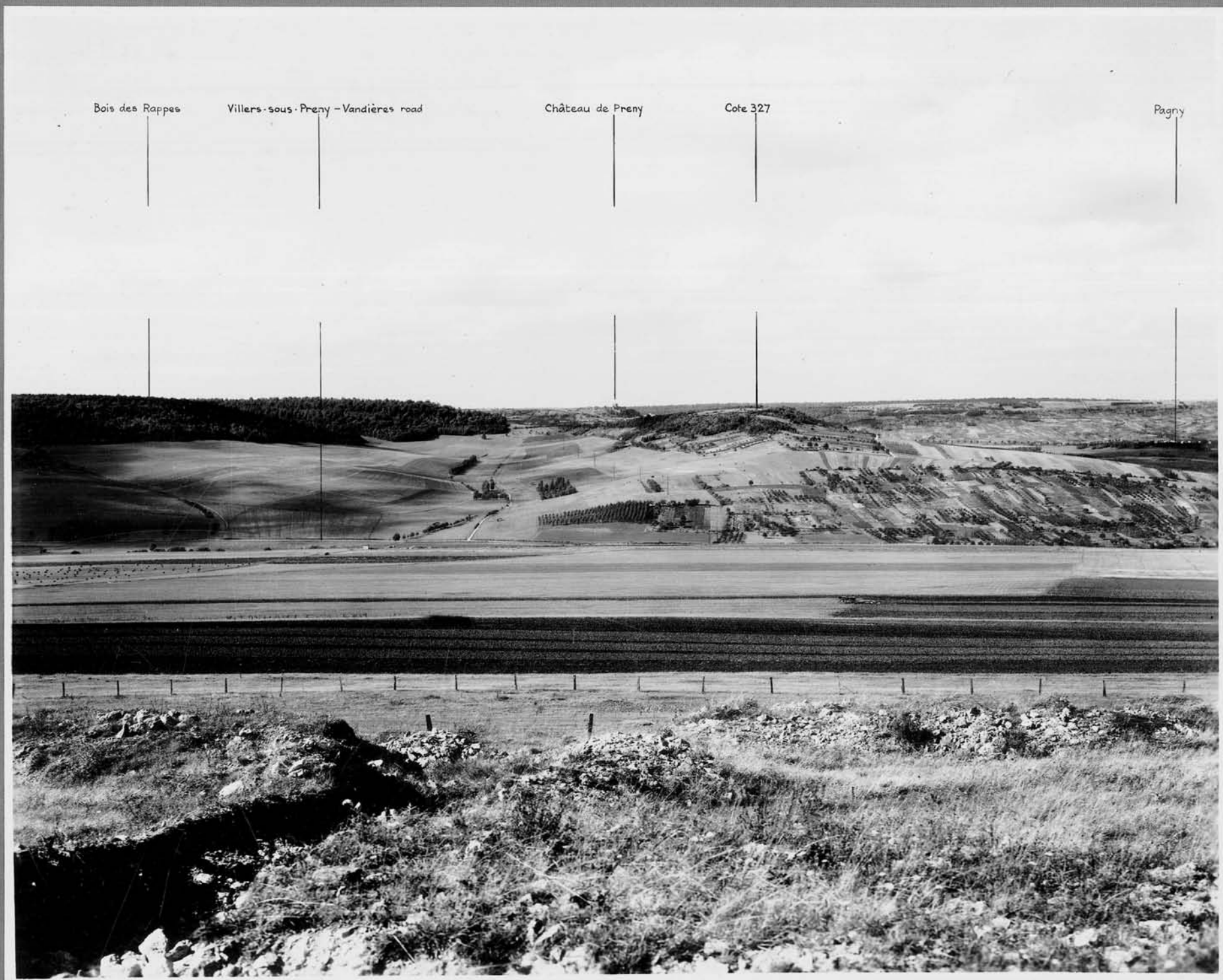
Villers - sous - Preny

Bois des Rappes

Villers - sous - Preny - Vandieres road







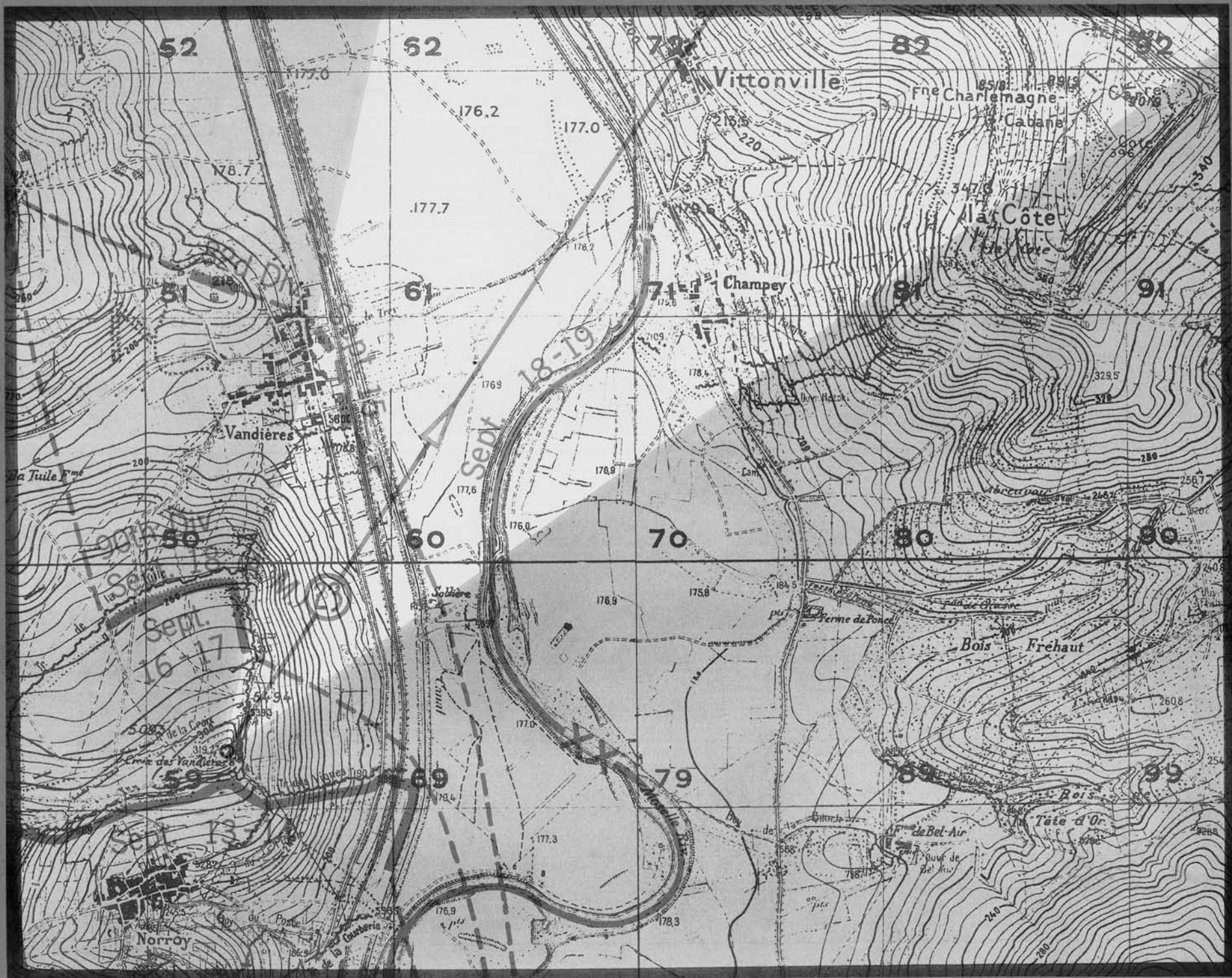
Bois des Rappes

Villers-sous-Prency - Vandières road

Château de Prency

Cote 327

Pagny





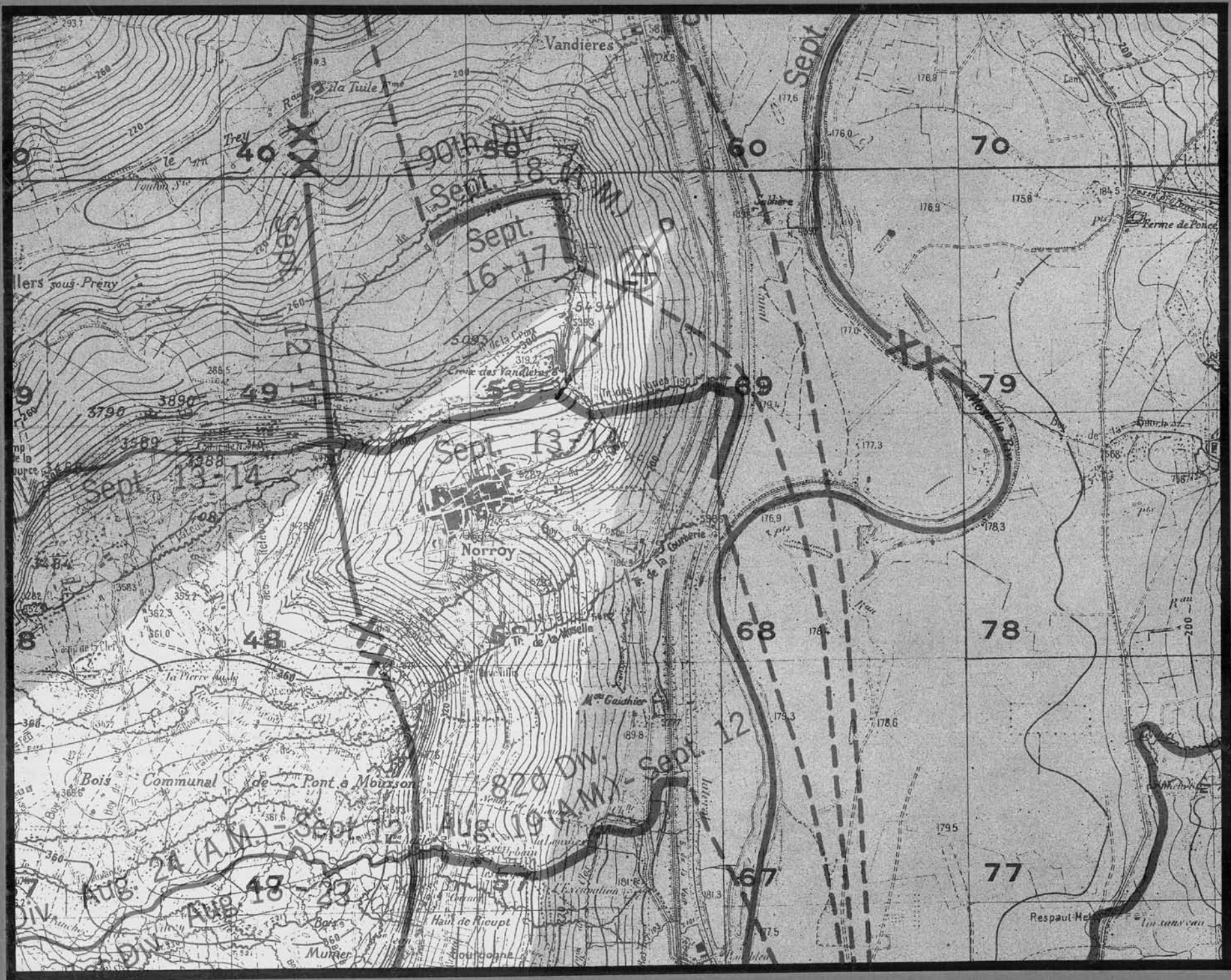
Vandières

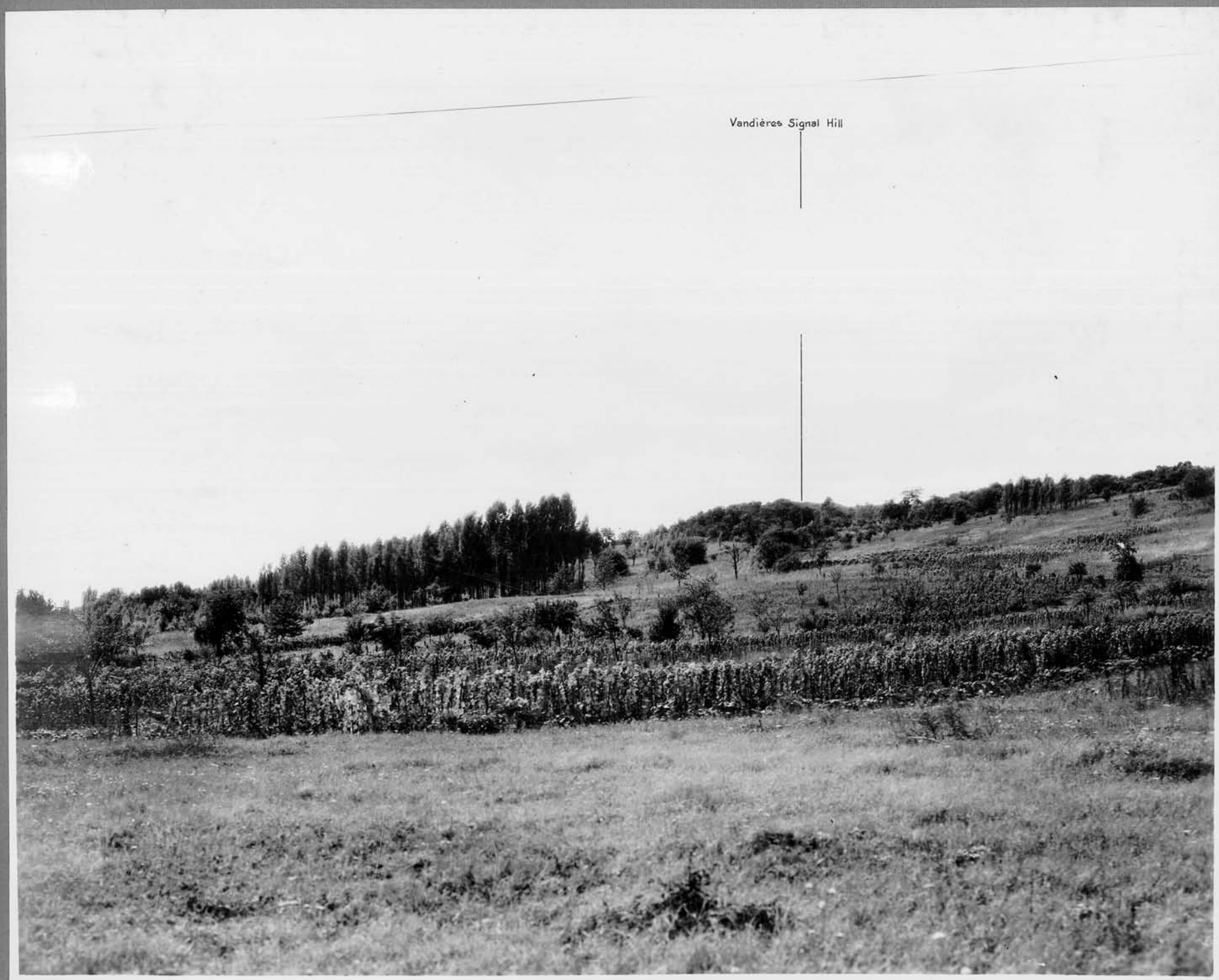
Vittonville

Cote 401

Moselle River

Champey





Vandières Signal Hill