

TERRAIN PHOTOGRAPHS  
AMERICAN WORLD WAR BATTLEFIELDS  
IN EUROPE

1<sup>ST</sup> DIVISION  
MEUSE-ARGONNE OFFENSIVE  
SEPTEMBER 29 - OCTOBER 12, 1918

PREPARED BY  
THE AMERICAN BATTLE MONUMENTS  
COMMISSION

THE COMMAND AND STAFF COLLEGE

LIBRARY



Class Symbol M 9403-H6-C.73-G3-C1

Accession Number N 69567

## PREFACE

THIS album is part of a collection of photographs of the various battlefields in Europe upon which the Armed Forces of the United States were actively engaged during World War I.

These terrain photographs were taken and prepared by the American Battle Monuments Commission, as provided in the act of Congress of March 4, 1923, to complete the historical record of the operations of the American units. The series comprises 69 albums containing 1,396 photographs.

The contents of these albums will be of particular value when studied in conjunction with the Summaries of Operations, prepared by the American Battle Monuments Commission, which relate in detail the combat services of each American division.

On the page preceding the photographs will be found a small-scale key map showing the general operation of which this divisional operation was a part. In the pocket inside the back cover will be found a reprint of a 1:20,000 map, of the type used during the war, showing the operation covered by the photographs in this

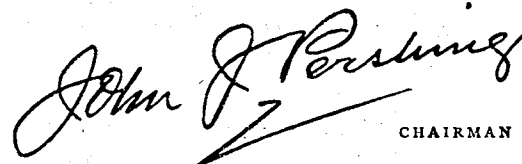
album. On this index map have been indicated the position of the camera and the direction in which it was sighted in taking each photograph.

On the page opposite each photograph is a section of the 1:20,000 map of the terrain in the vicinity of that pertaining to the photograph. The white wedge-shaped portion of the map indicates the sector of terrain which actually appears in the picture. The plotted position of the camera and the axis of the picture are shown in blue, the length of the blue line approximately indicating the depth of the view. The circled number corresponds to the number of the photograph, of which the numerals before the dash indicate the division and the numerals after the dash indicate the serial number of the photograph in this division.

Various topographical features visible in the photographs have been indicated by name to facilitate orientation.

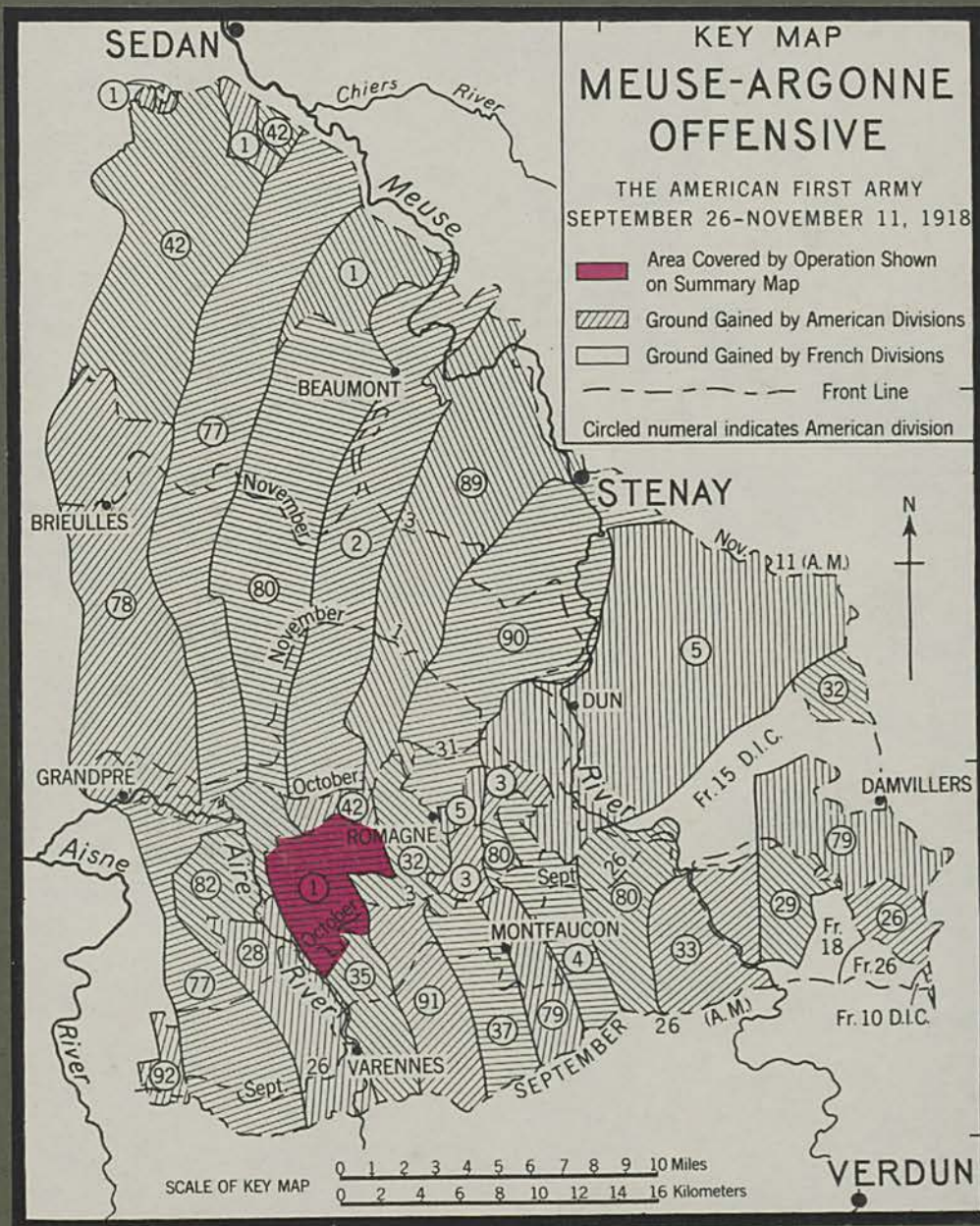
Complete sets of these albums have been deposited with the National Archives, the Library of Congress, the Historical Division of the War Department General Staff, and the Command and Staff College.

AMERICAN BATTLE MONUMENTS COMMISSION,

  
CHAIRMAN

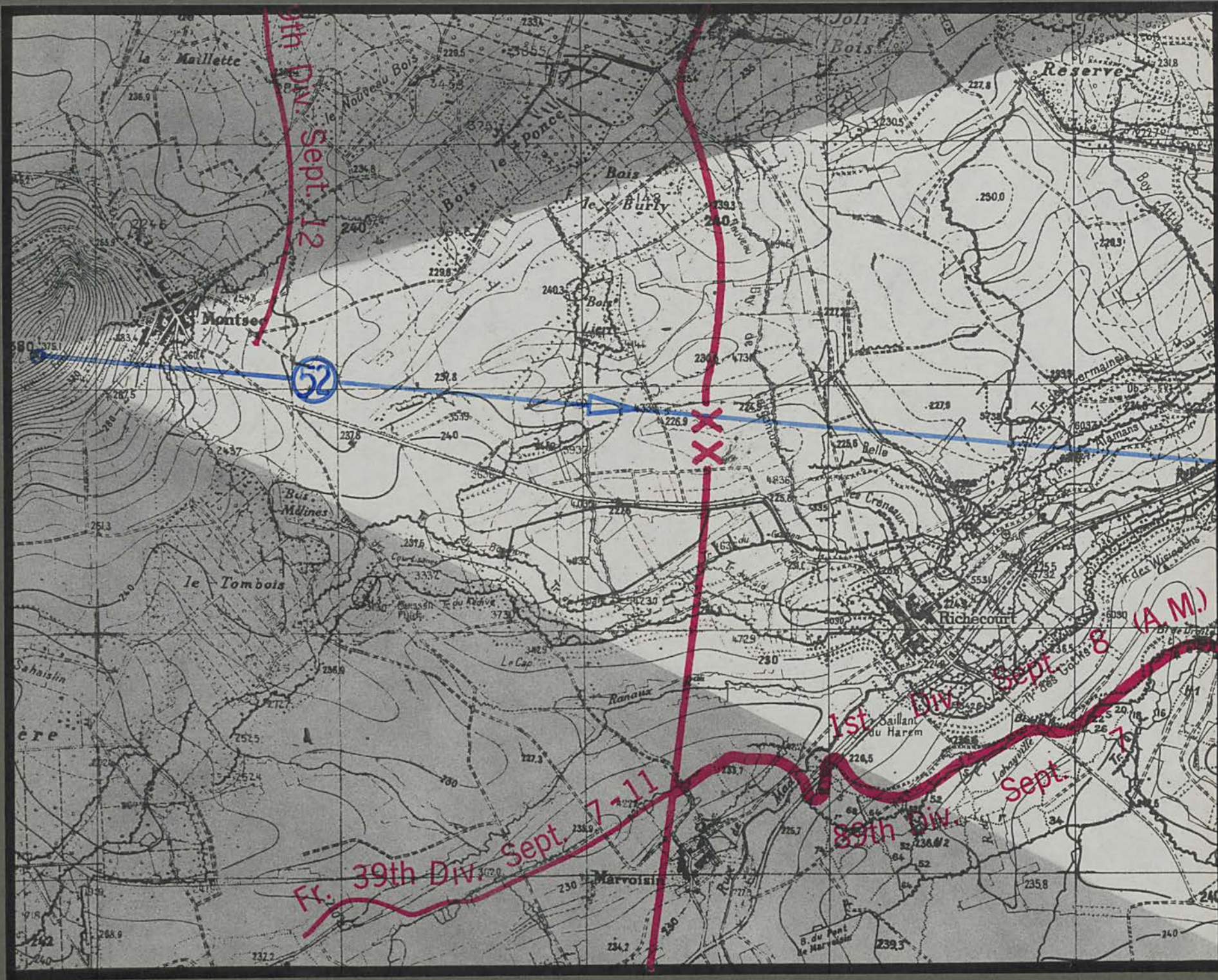
NOV 22 1946

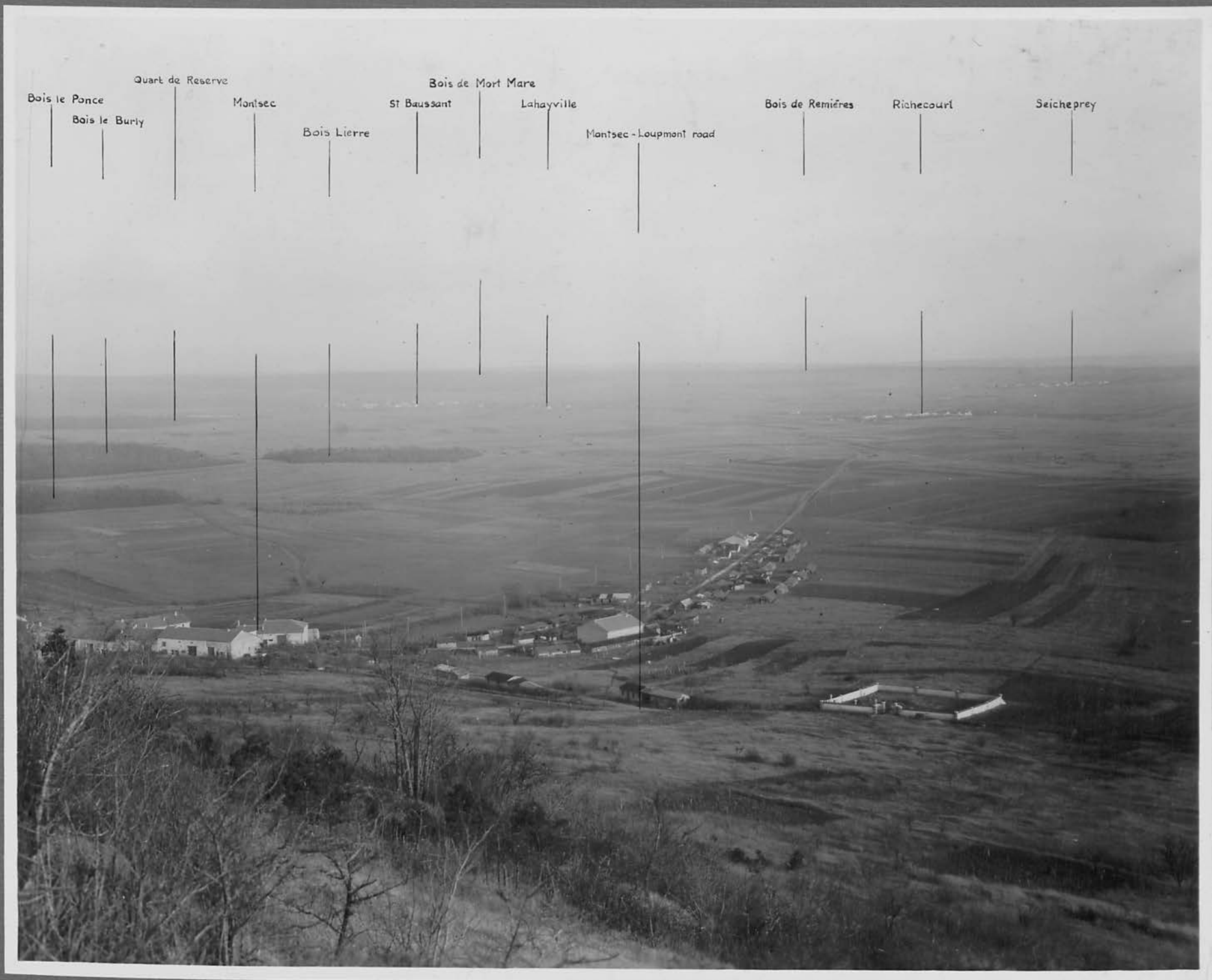
1<sup>ST</sup> DIVISION  
MEUSE-ARGONNE OFFENSIVE  
SEPTEMBER 29—OCTOBER 12, 1918







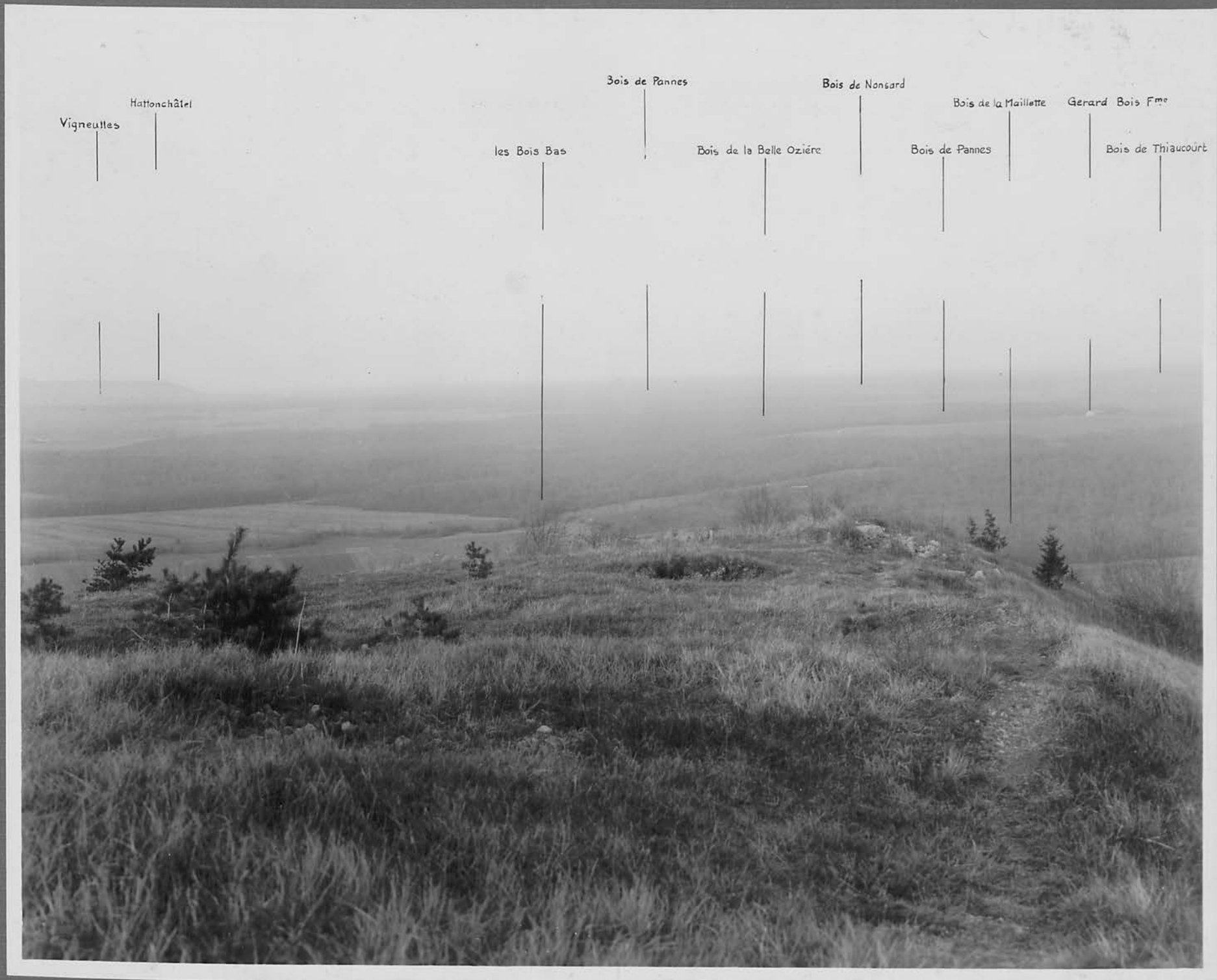
















Bois de Nonsard

Pannes-Lamarche road

Lamarche

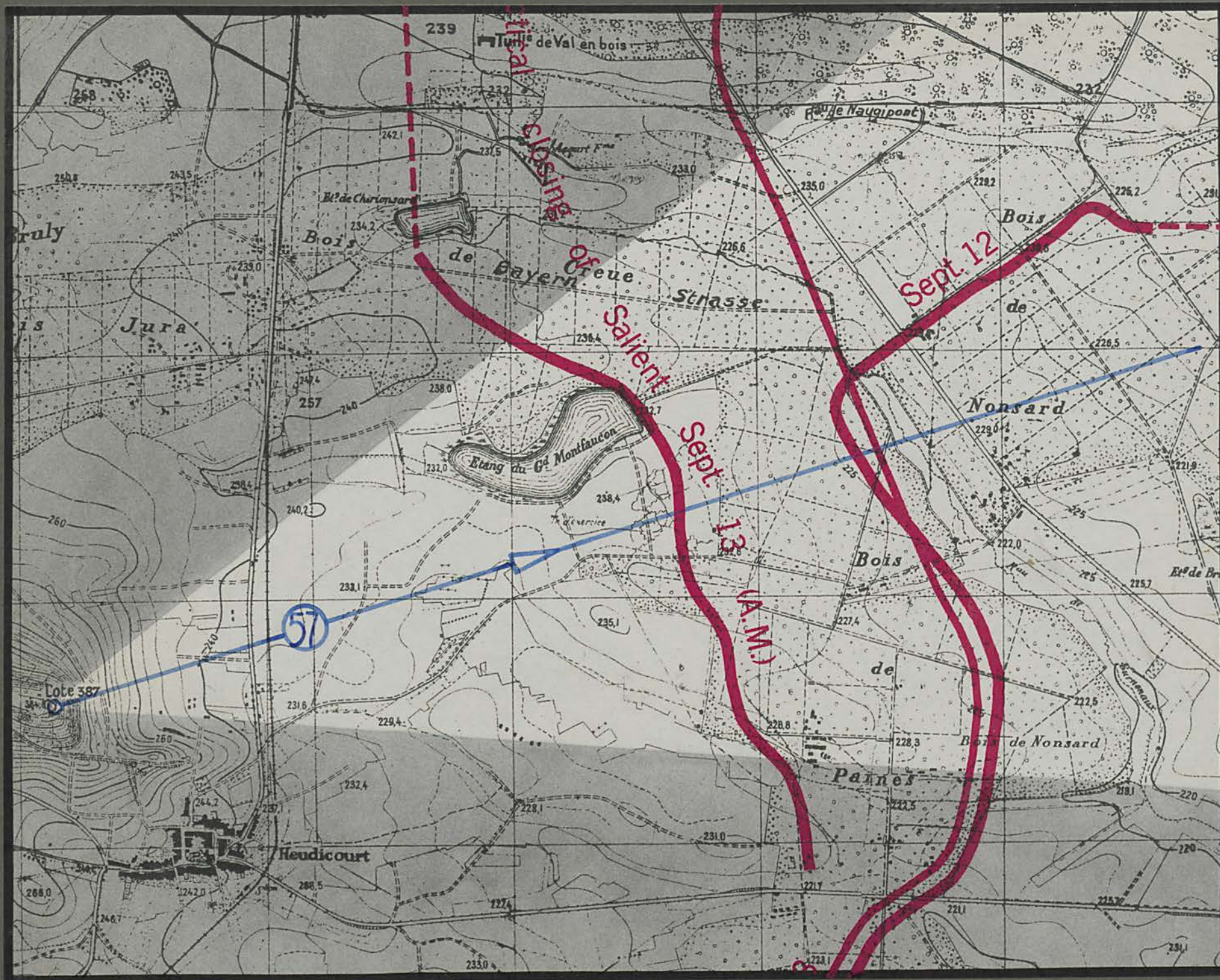
Bois de Lamarche

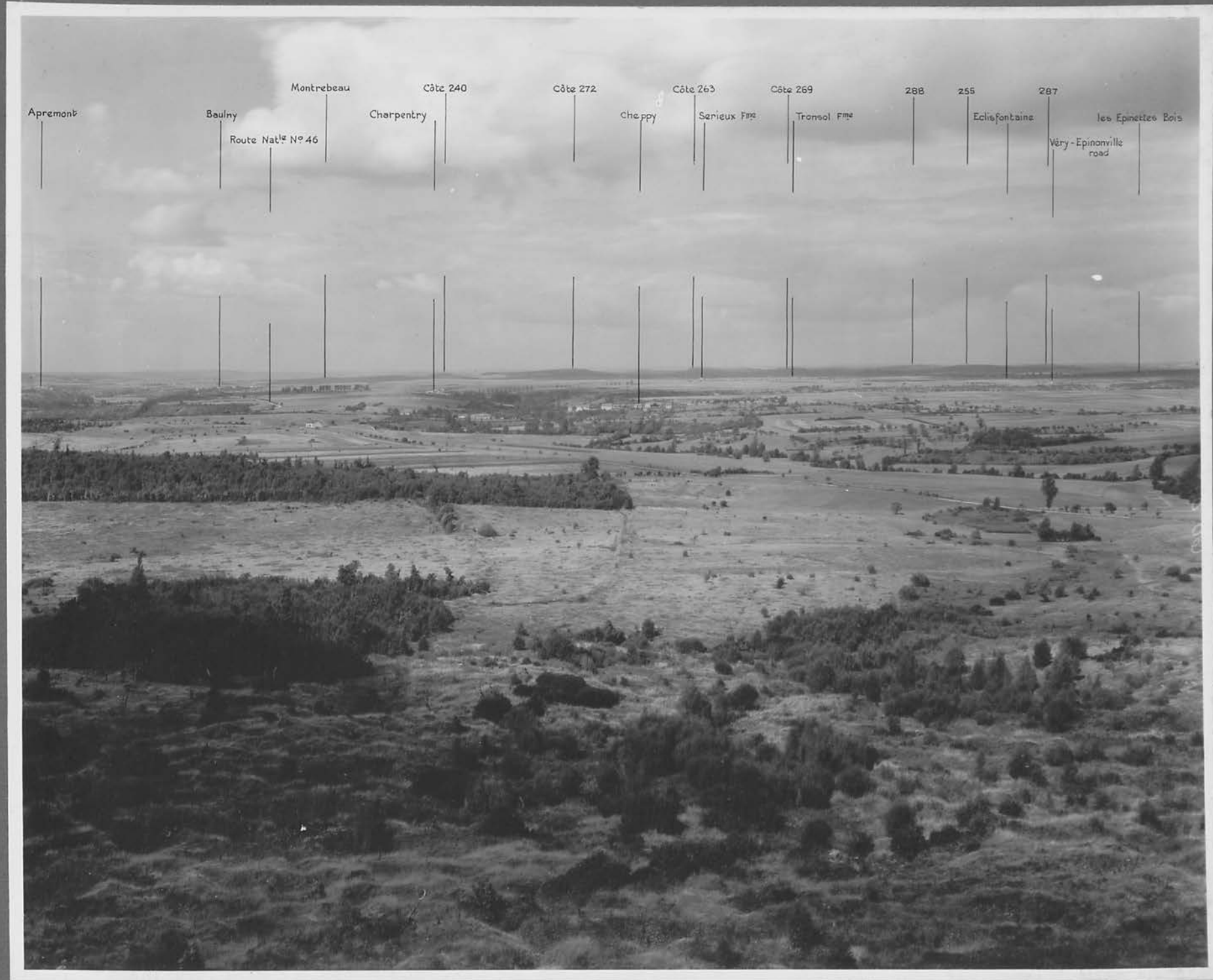
Hattanchâtel

Bois de Thiaucourt











Côte 272

Côte 263

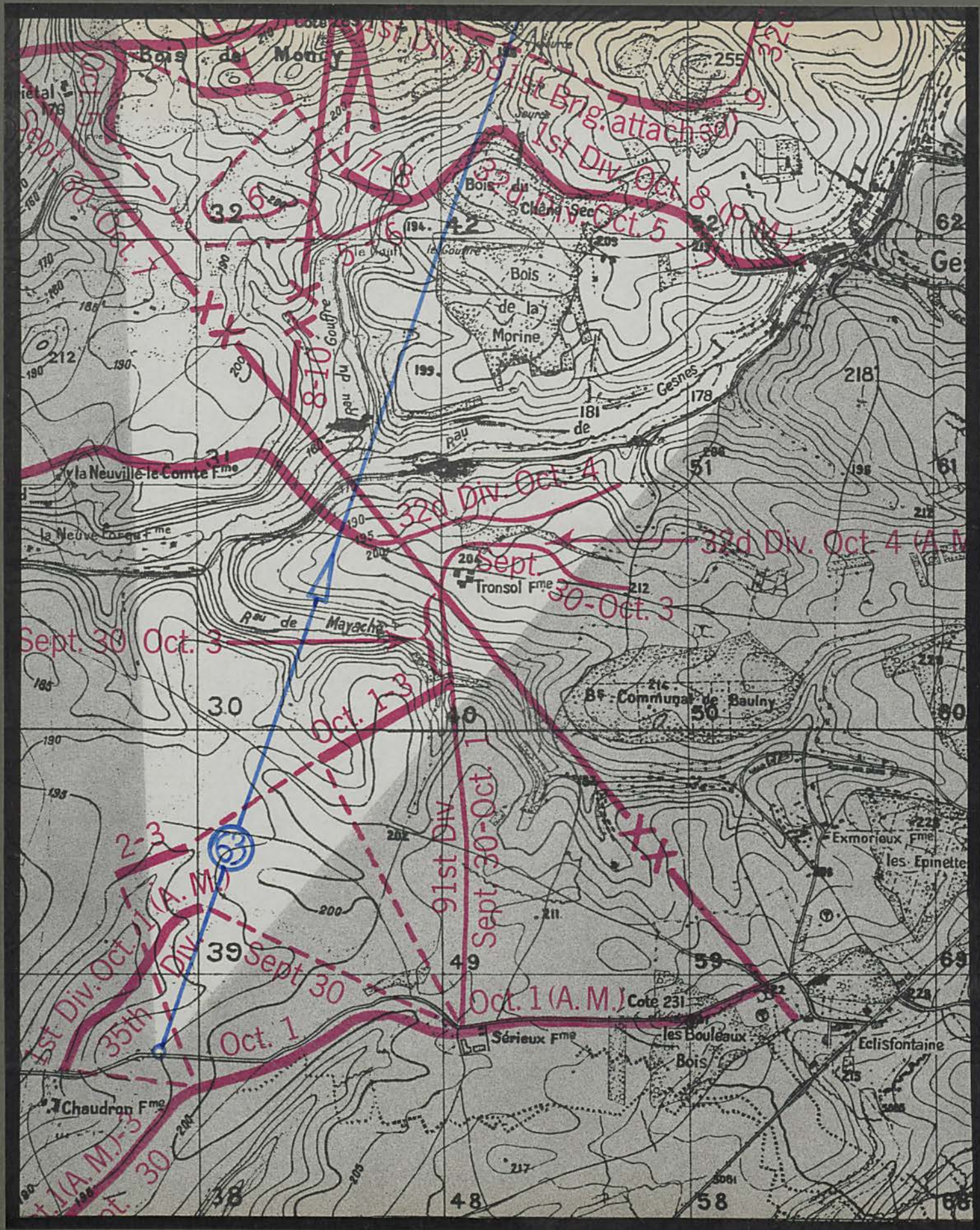
Tronsoi F<sup>me</sup>

Côte 269

Bois du Chêne Sec

Bois Communal  
de Baulny





Côte 263

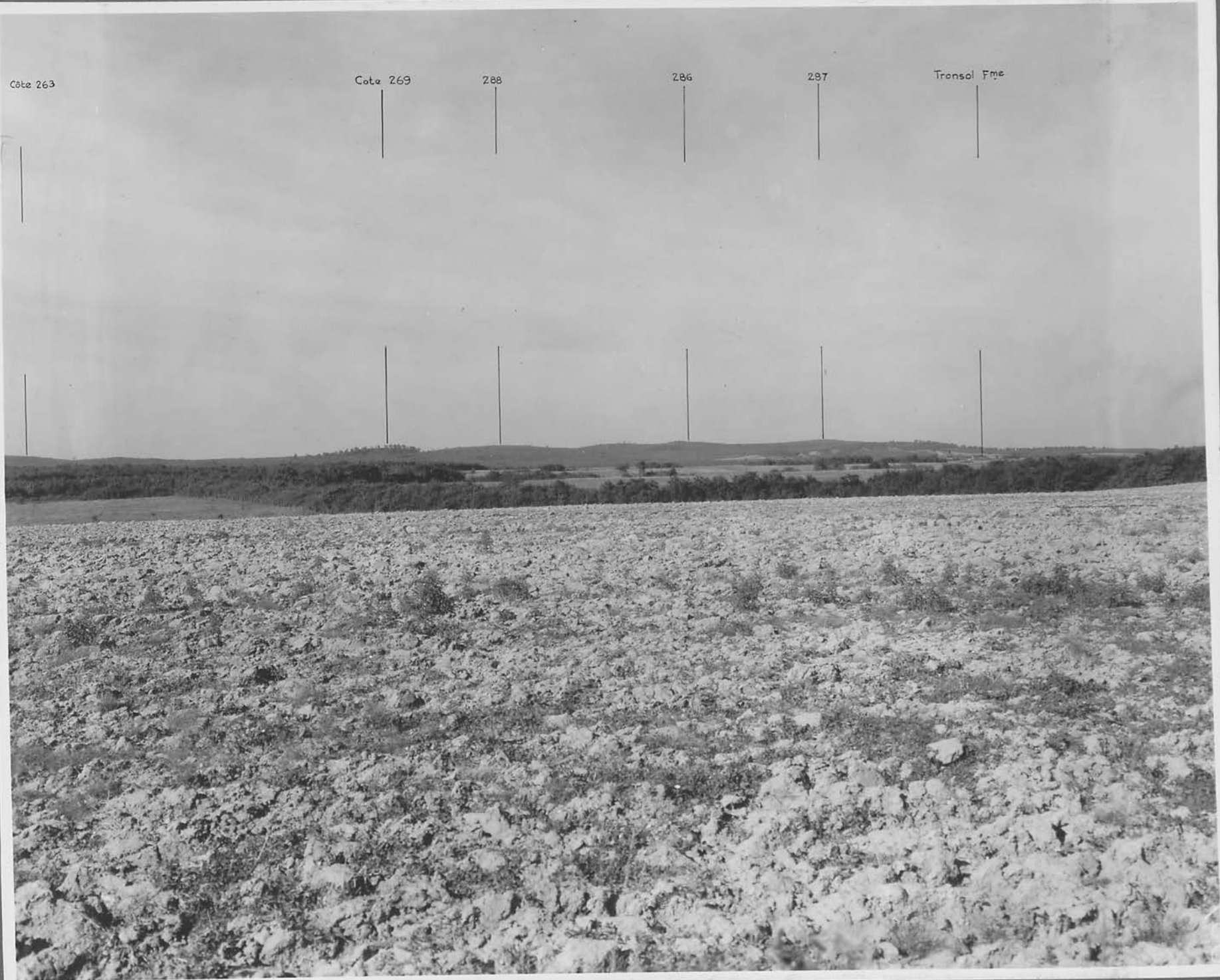
Côte 269

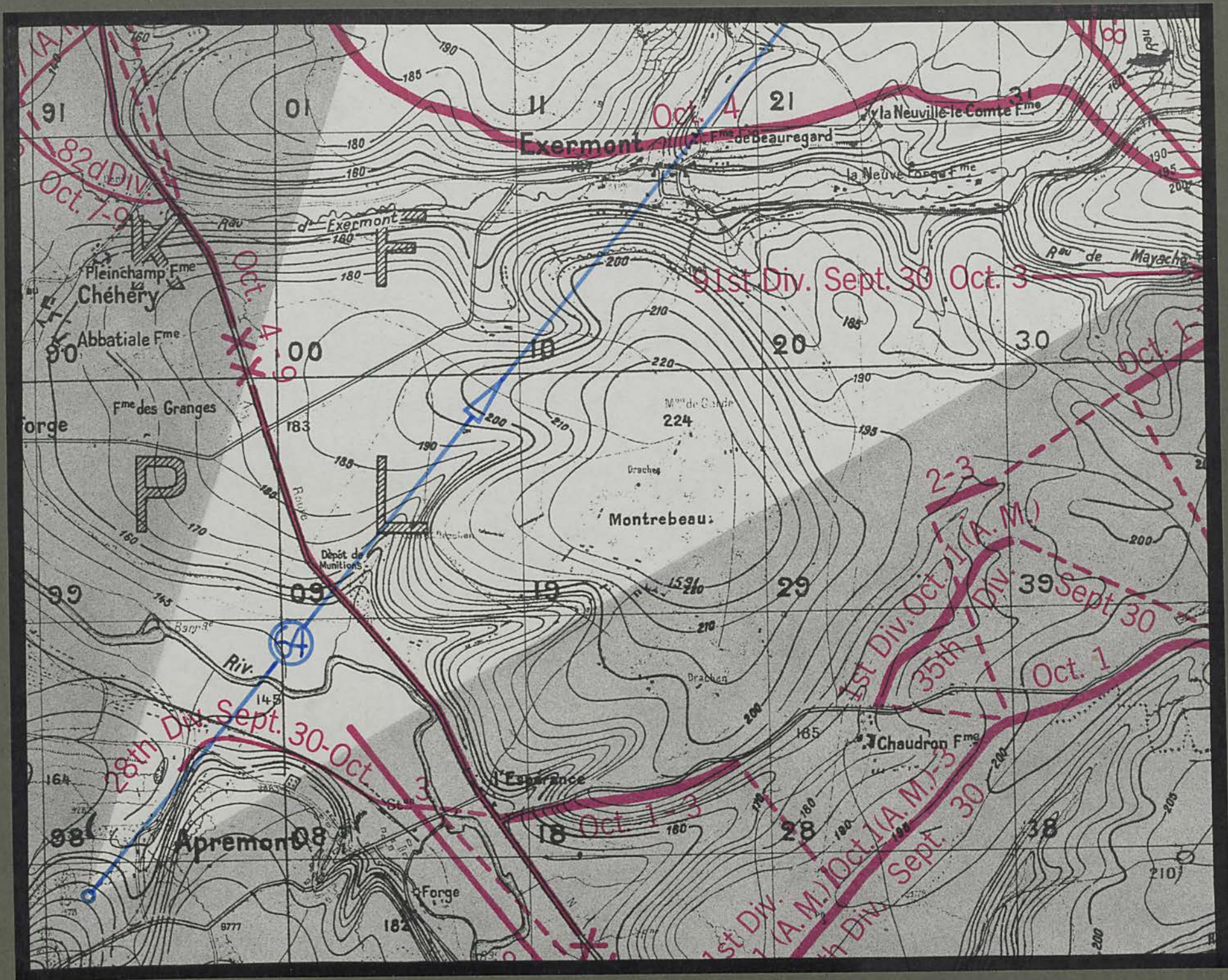
288

286

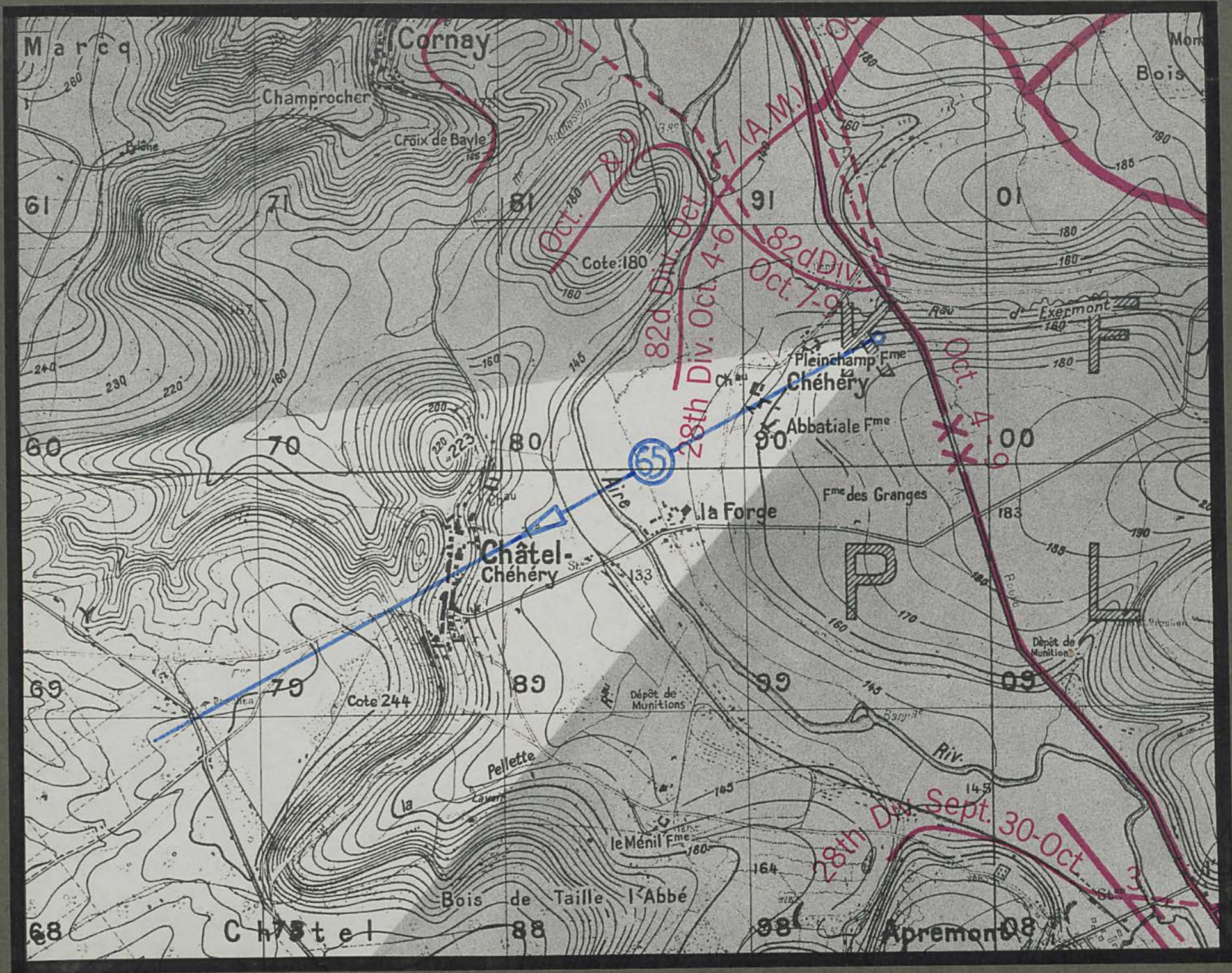
287

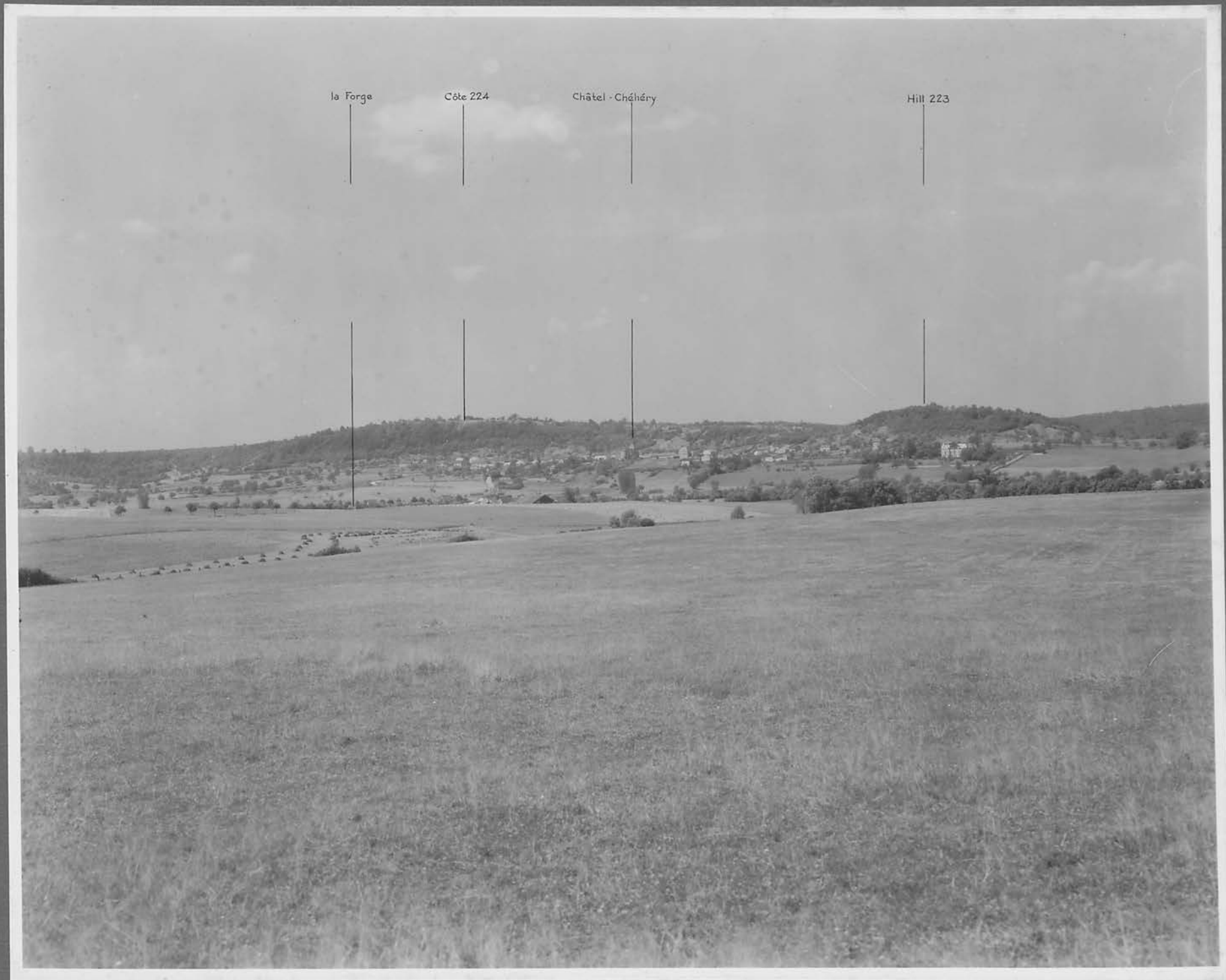
Trensol Fme





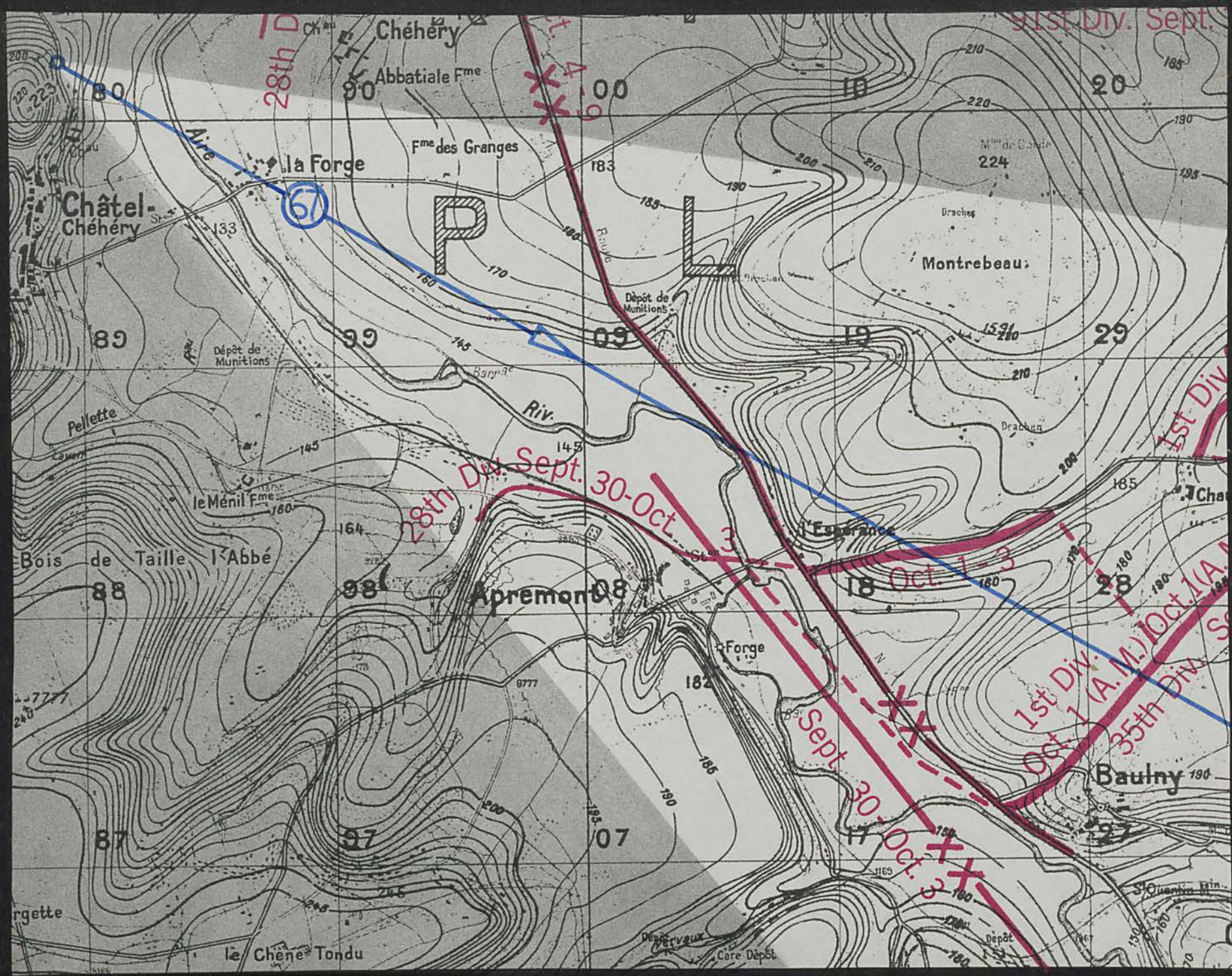




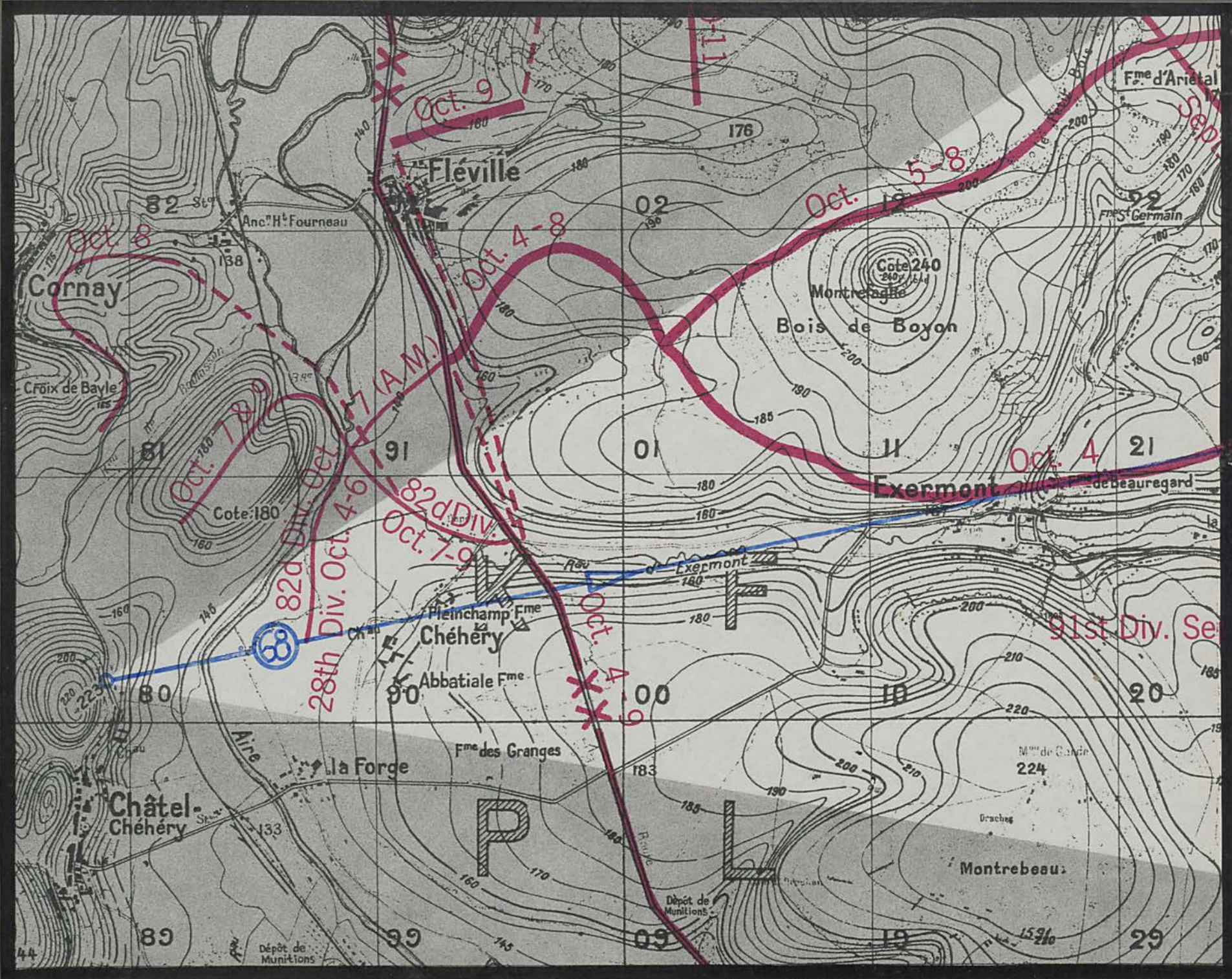




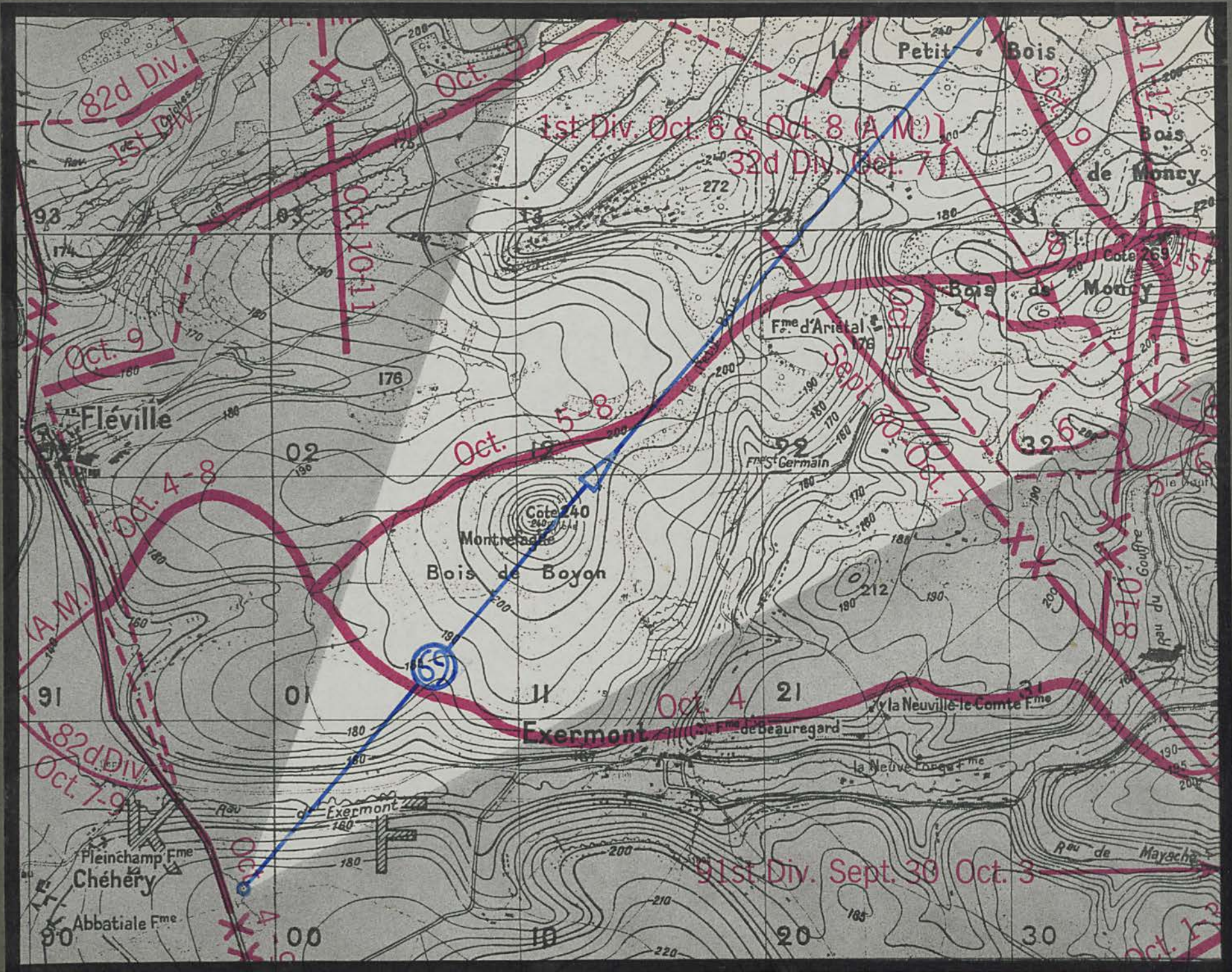












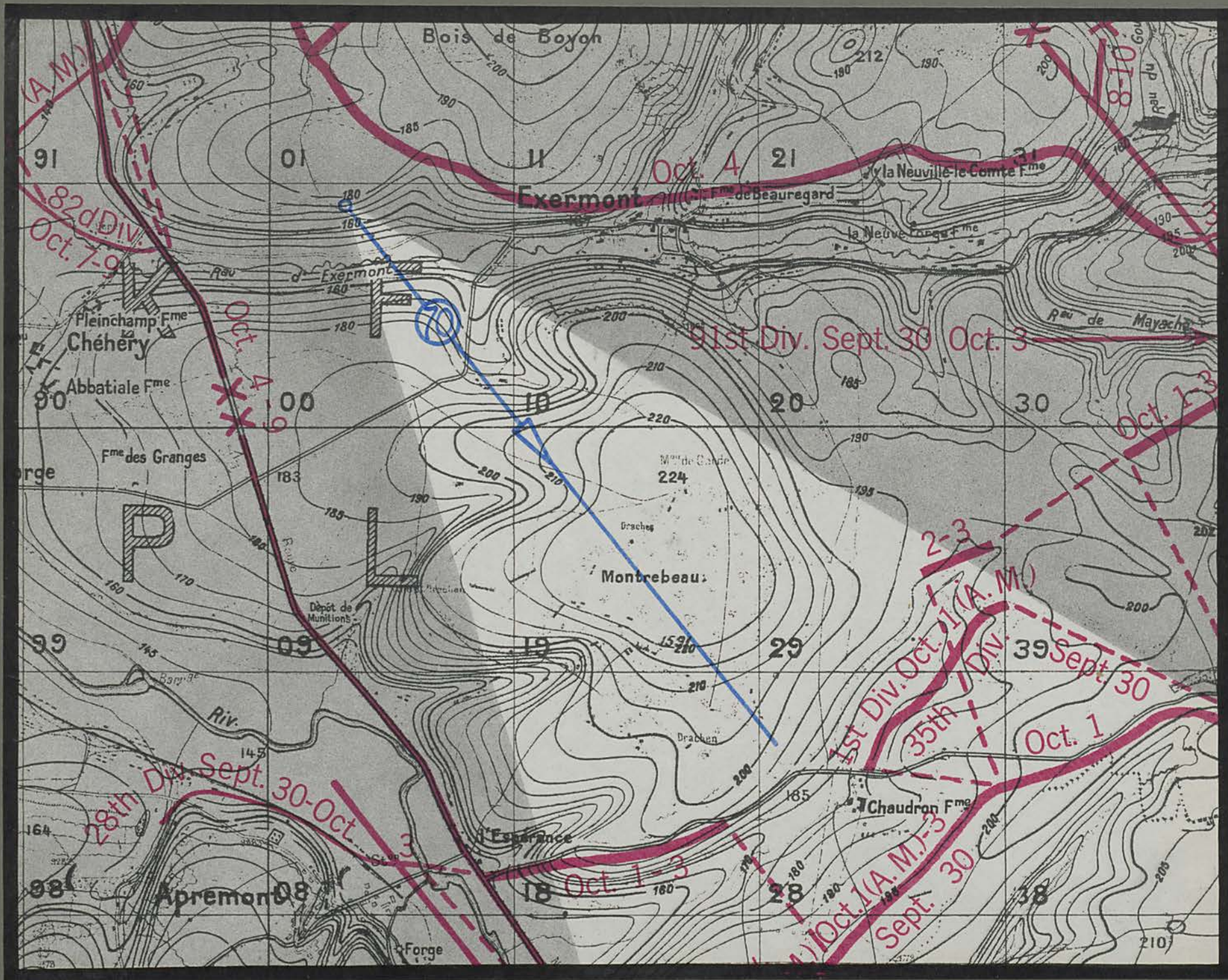
road from Route Nat<sup>l</sup> 46 to Exermont

Cote 272

Cote 240

Cote 269



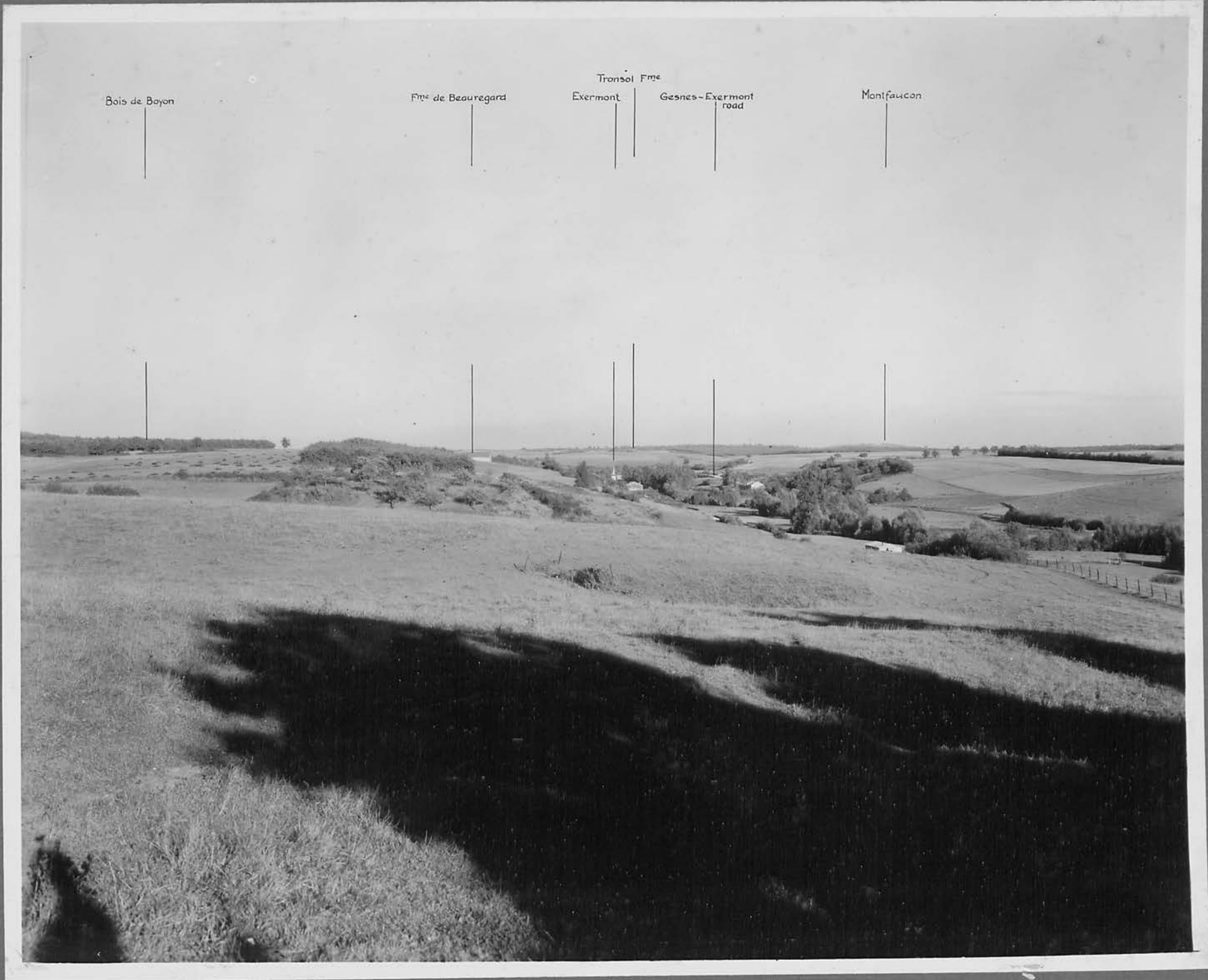


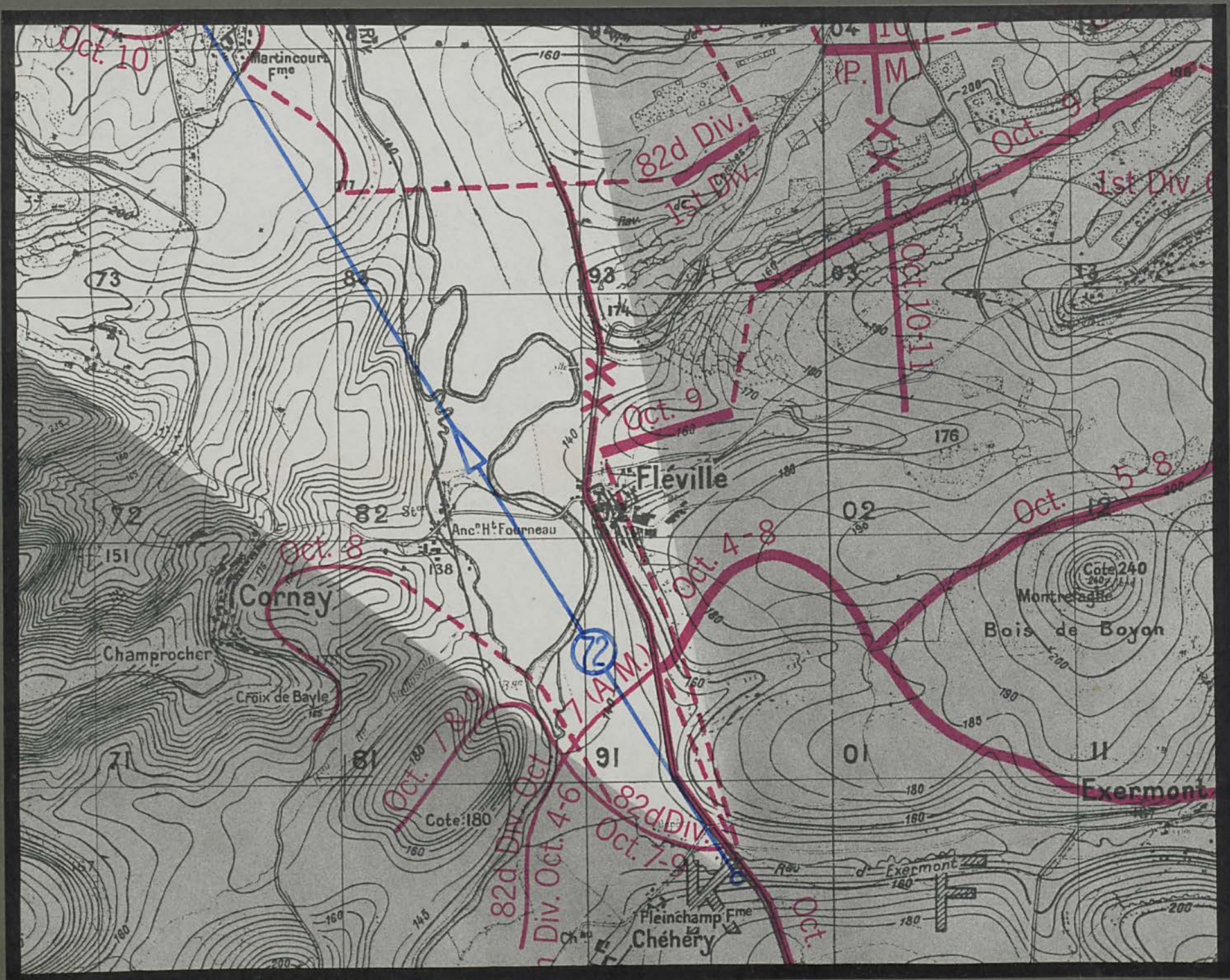
Rau d'Exermont

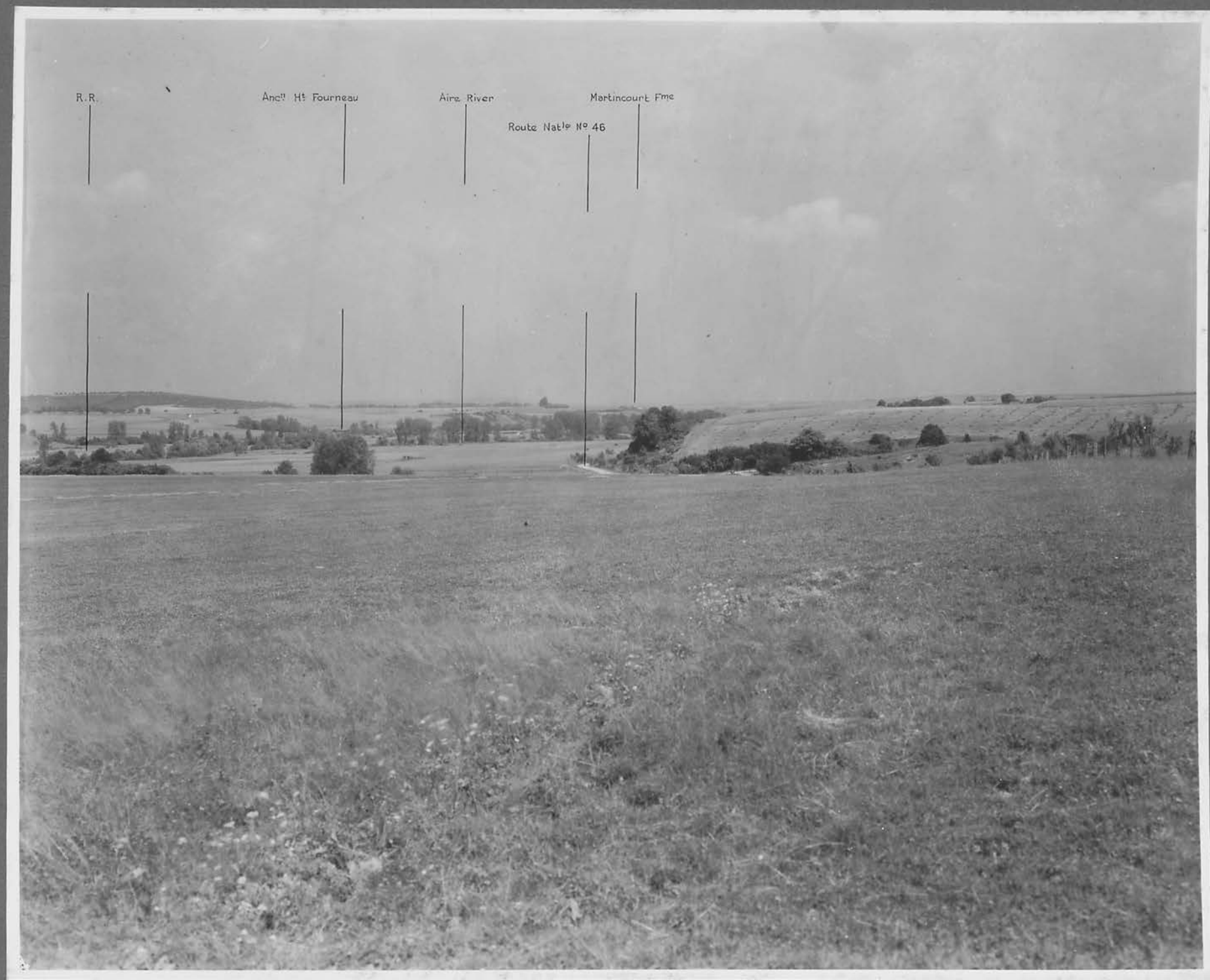
Montrebeau

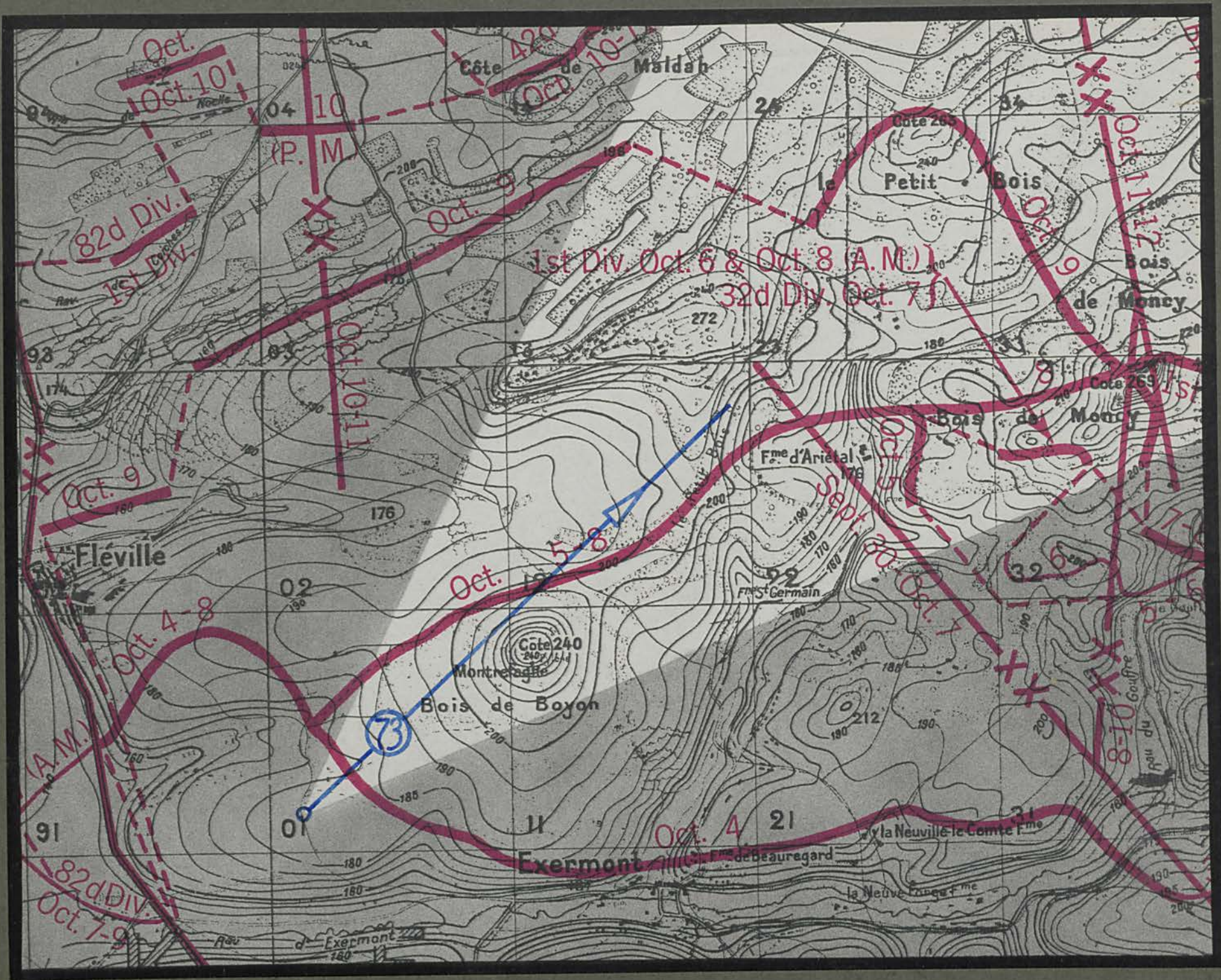


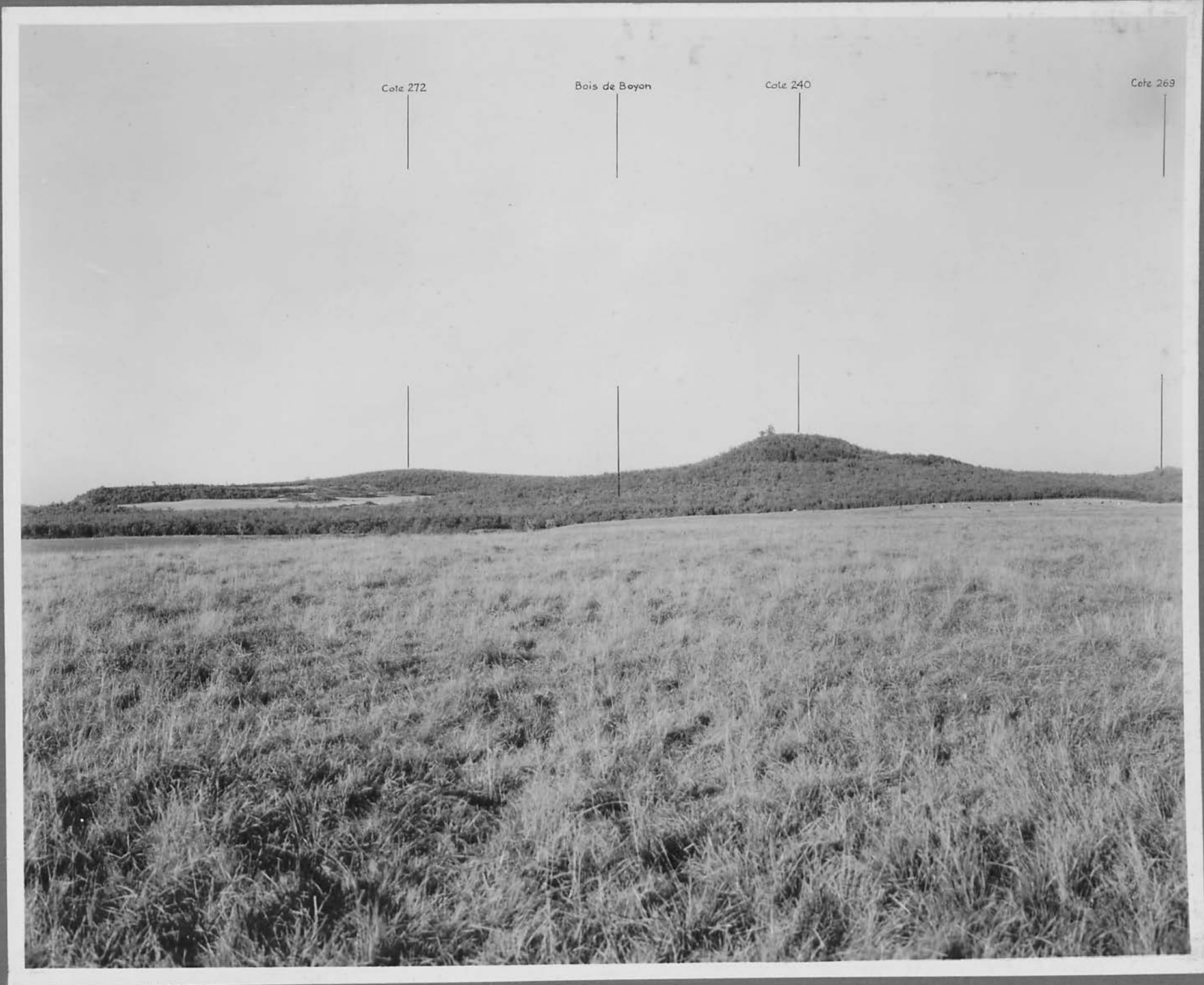






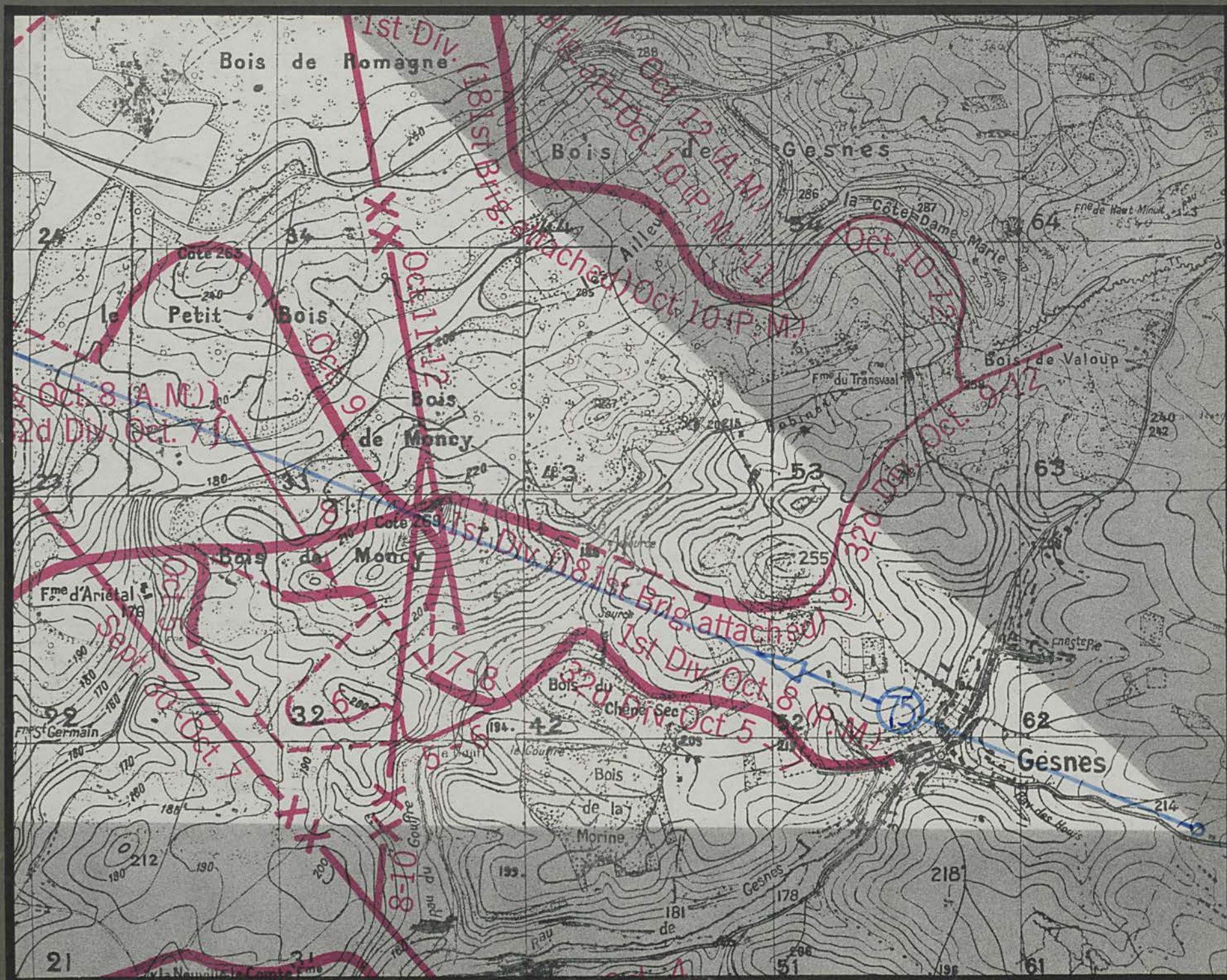












Côte 240

Bois de la Morine

Bois du Chêne Sec

Côte 269

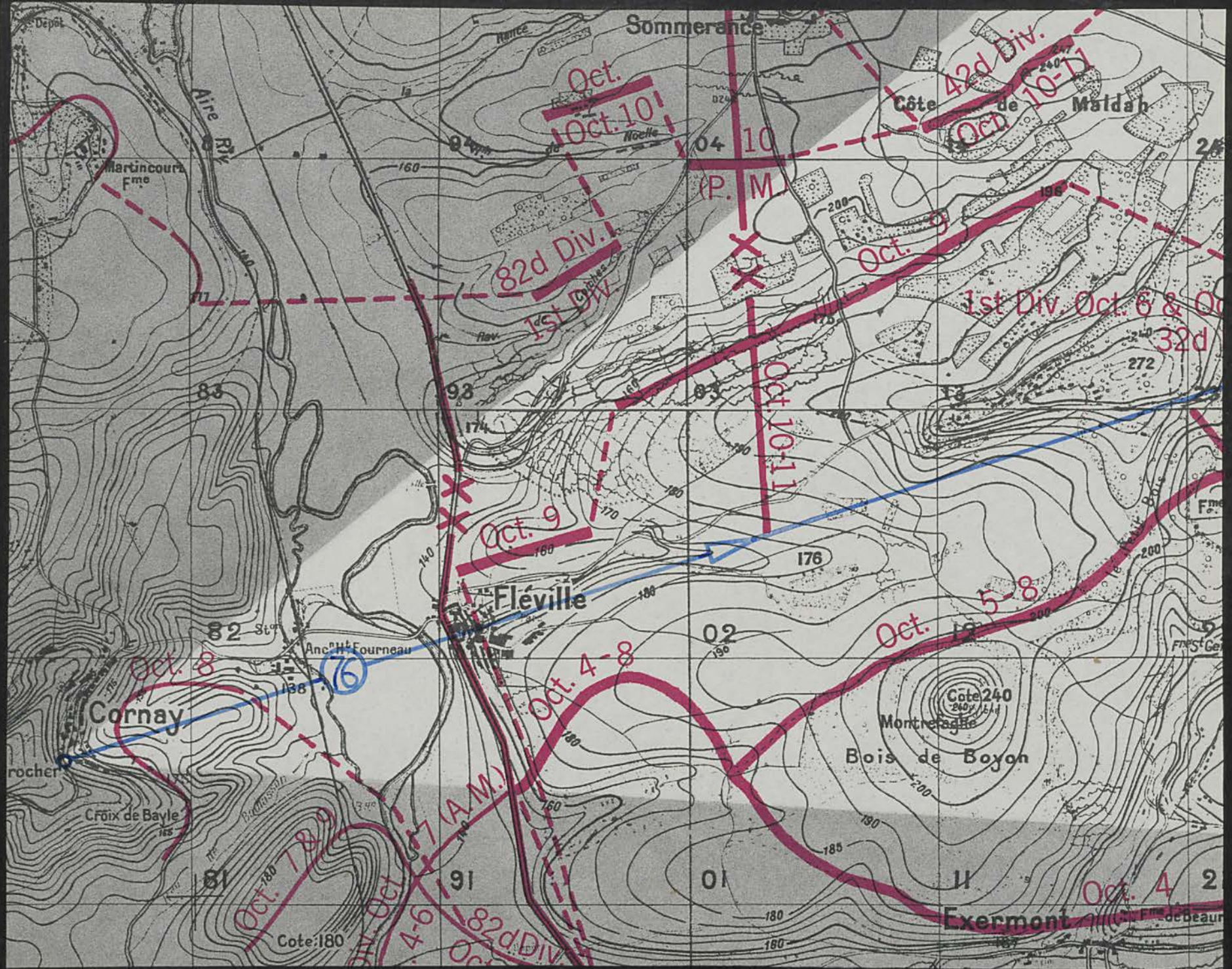
255

Cierges - Gesnes road

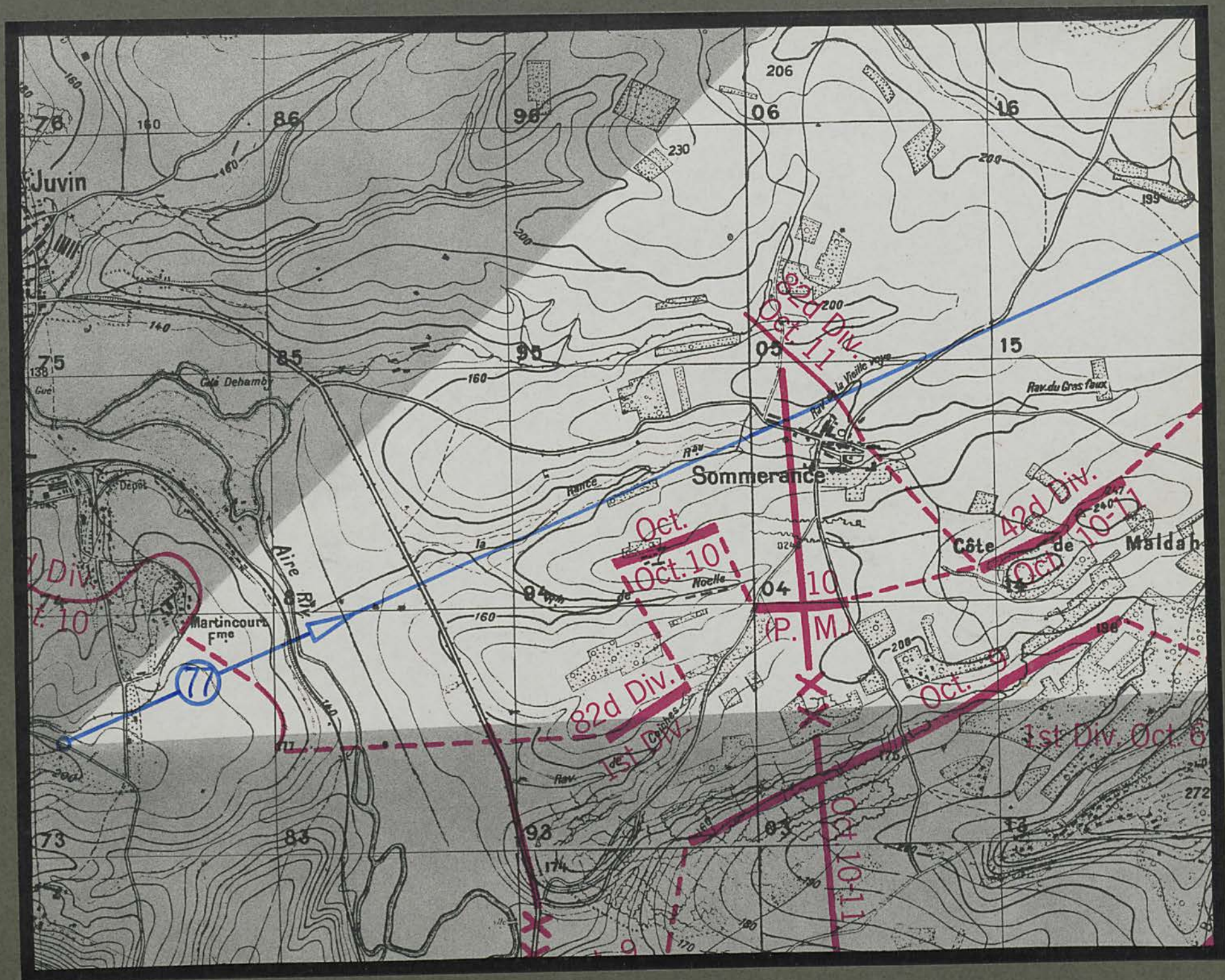
Rd de Gesnes Côte 272

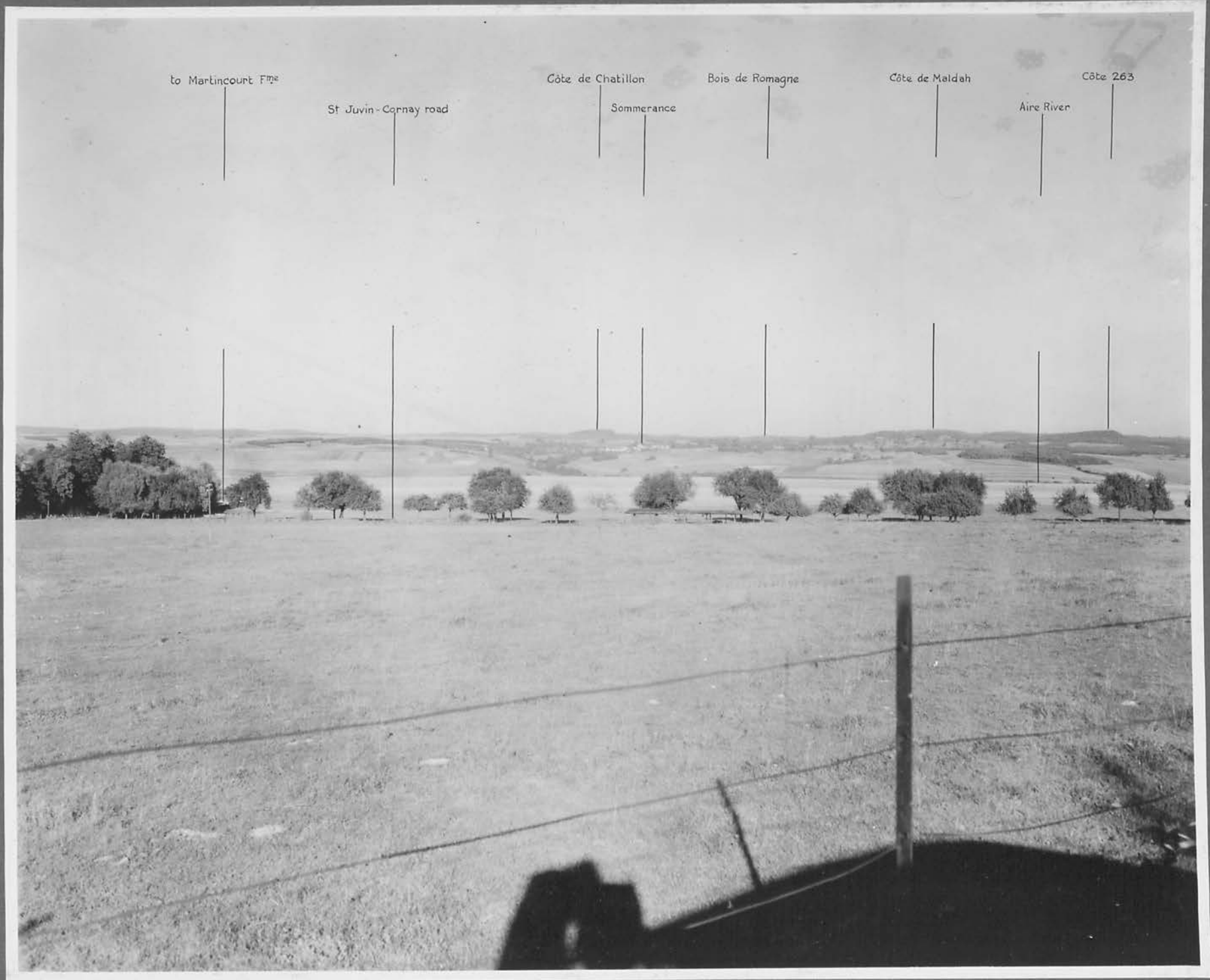
Gesnes















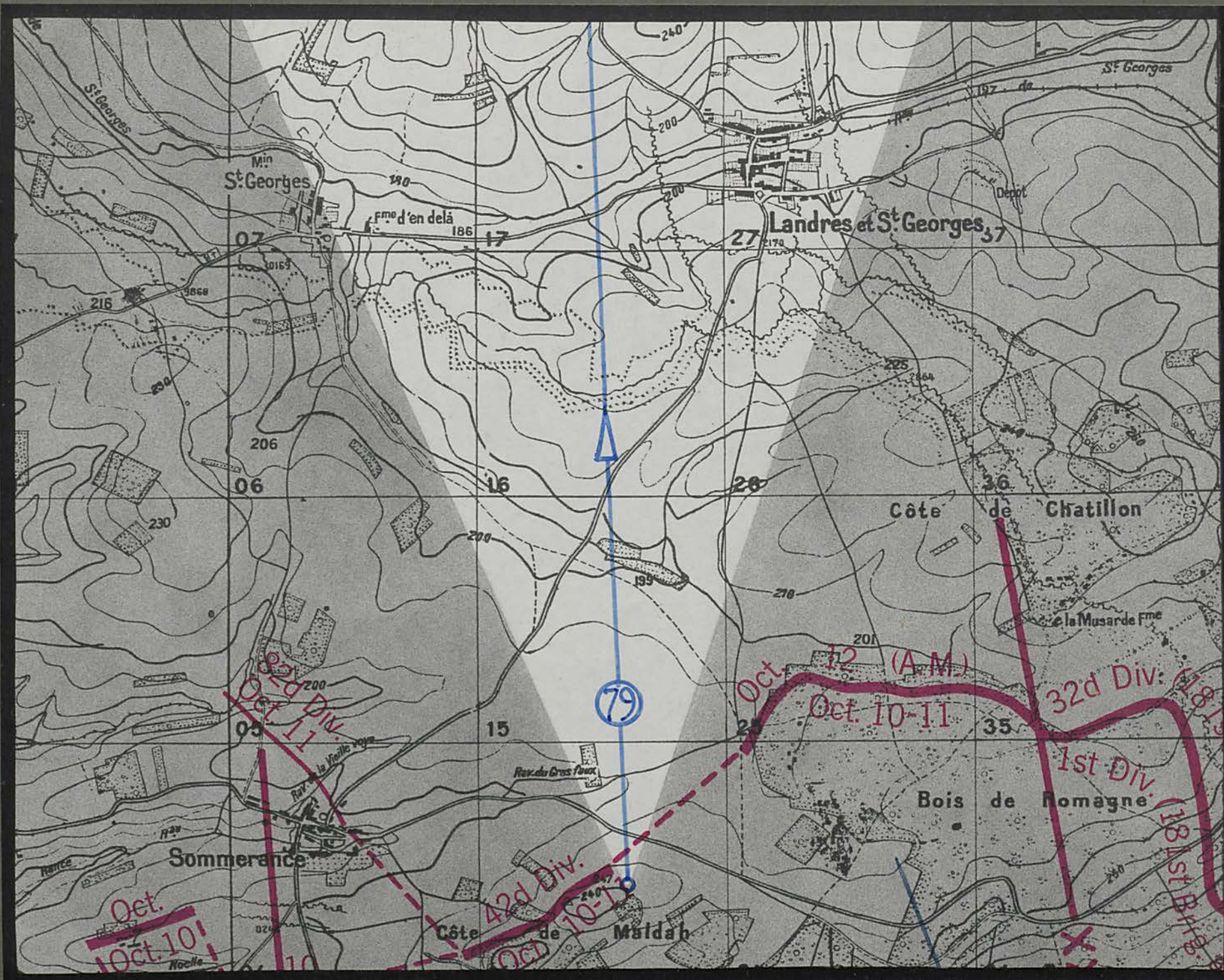
Bois des Hazois

Sommerance - Romagne road

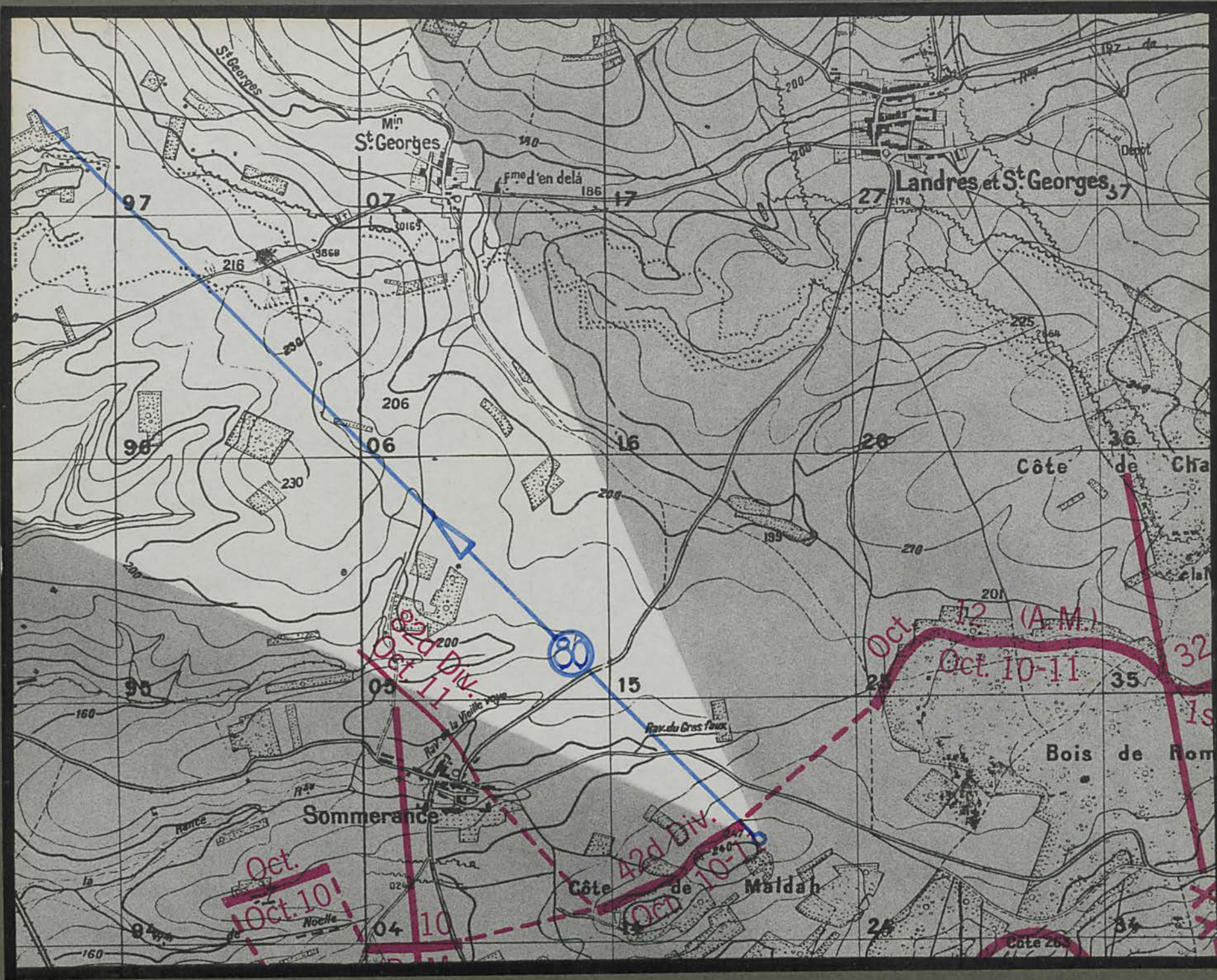
Côte de Châtillon

Bois de Romagne

la Tuilerie Fm









COMMA

COMBINED ARMS RESEARCH LIBRARY  
FORT LEAVENWORTH, KS

SCHOOL



3 1695 00464 6105

**LIBRARY REGULATIONS**

1. Books, pamphlets, and periodicals must be charged at the loan desk (signature on book-loan card) before being taken from the library.

2. Any item drawn from the Library must be returned within one month.

Exceptions to this regulation are as follows:

- (1) Material issued to classes as a whole.
- (2) Material issued to instructors for professional use.
- (3) New books which are in demand must be returned within one week.
- (4) Books required for faculty use are subject to recall at any time.
- (5) All persons having library material in their possession will return same before leaving the post permanently.
- (6) Books loaned outside the School must be returned within two weeks.

3. Reference books and current periodicals will not be removed from the Library.

69587

LIBRARY  
COMMAND  
AND  
STAFF  
COLLEGE

