

TERRAIN PHOTOGRAPHS
AMERICAN WORLD WAR BATTLEFIELDS
IN EUROPE

42ND DIVISION

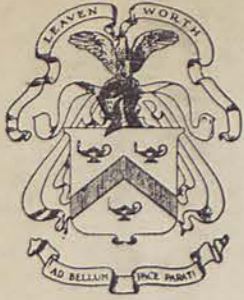
MEUSE-ARGONNE OFFENSIVE
OCTOBER 5-NOVEMBER 1, 1918

MEUSE-ARGONNE OFFENSIVE
NOVEMBER 2-10, 1918

PREPARED BY
THE AMERICAN BATTLE MONUMENTS
COMMISSION

THE COMMAND AND STAFF COLLEGE

LIBRARY



Class Symbol ~~M9403-H6-C.73-G3-C42~~

Accession Number ~~N 69609~~

PREFACE

THIS album is part of a collection of photographs of the various battlefields in Europe upon which the Armed Forces of the United States were actively engaged during World War I.

These terrain photographs were taken and prepared by the American Battle Monuments Commission, as provided in the act of Congress of March 4, 1923, to complete the historical record of the operations of the American units. The series comprises 69 albums containing 1,396 photographs.

The contents of these albums will be of particular value when studied in conjunction with the Summaries of Operations, prepared by the American Battle Monuments Commission, which relate in detail the combat services of each American division.

On the page preceding the photographs will be found a small-scale key map showing the general operation of which this divisional operation was a part. In the pocket inside the back cover will be found a reprint of a 1:20,000 map, of the type used during the war, showing the operation covered by the photographs in this

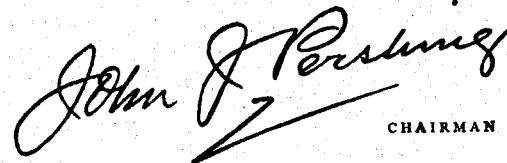
album. On this index map have been indicated the position of the camera and the direction in which it was sighted in taking each photograph.

On the page opposite each photograph is a section of the 1:20,000 map of the terrain in the vicinity of that pertaining to the photograph. The white wedge-shaped portion of the map indicates the sector of terrain which actually appears in the picture. The plotted position of the camera and the axis of the picture are shown in blue, the length of the blue line approximately indicating the depth of the view. The circled number corresponds to the number of the photograph, of which the numerals before the dash indicate the division and the numerals after the dash indicate the serial number of the photograph in this division.

Various topographical features visible in the photographs have been indicated by name to facilitate orientation.

Complete sets of these albums have been deposited with the National Archives, the Library of Congress, the Historical Division of the War Department General Staff, and the Command and Staff College.

AMERICAN BATTLE MONUMENTS COMMISSION,

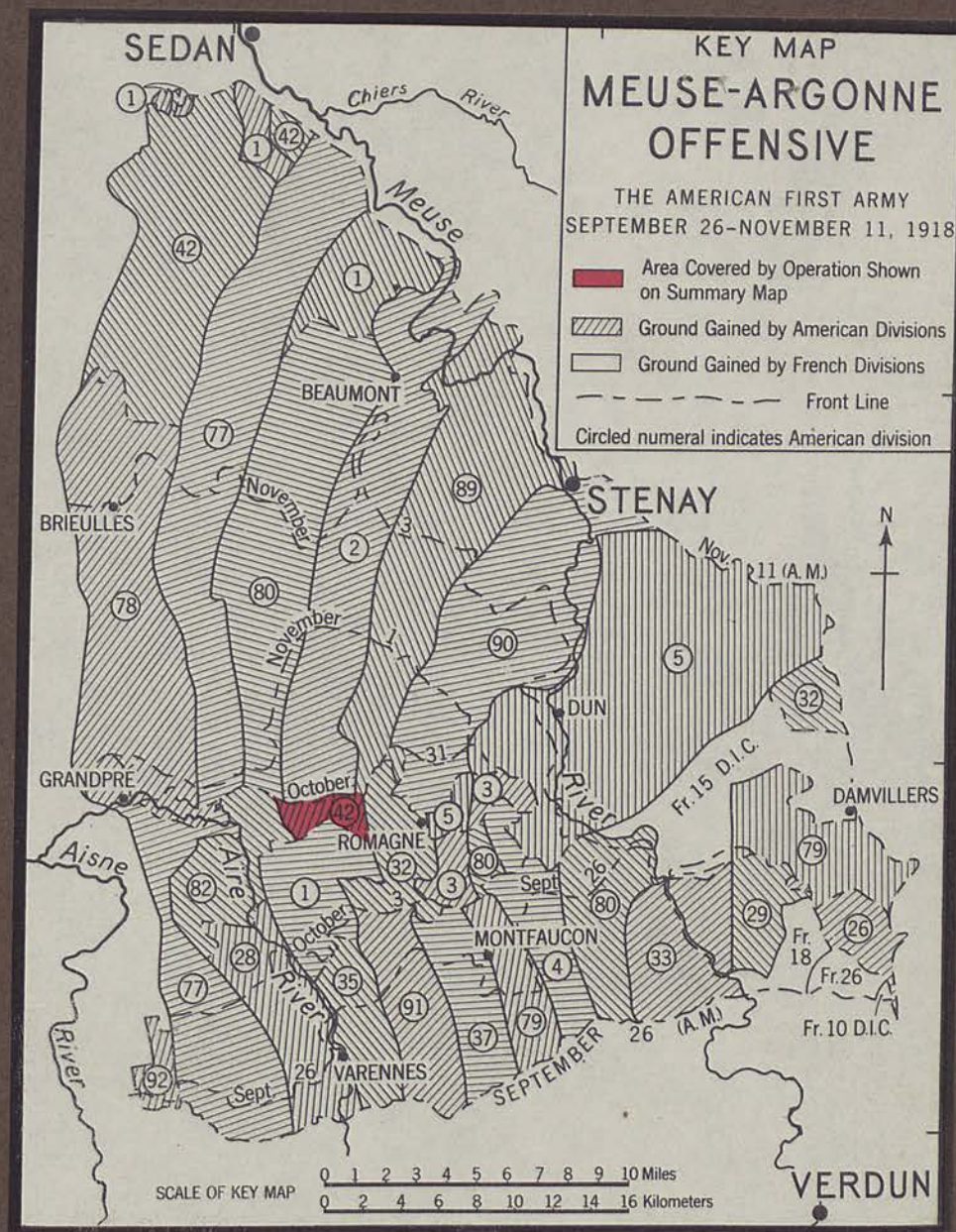

CHAIRMAN

NOV 22 1948

42ND DIVISION

MEUSE-ARGONNE OFFENSIVE

OCTOBER 5—NOVEMBER 1, 1918





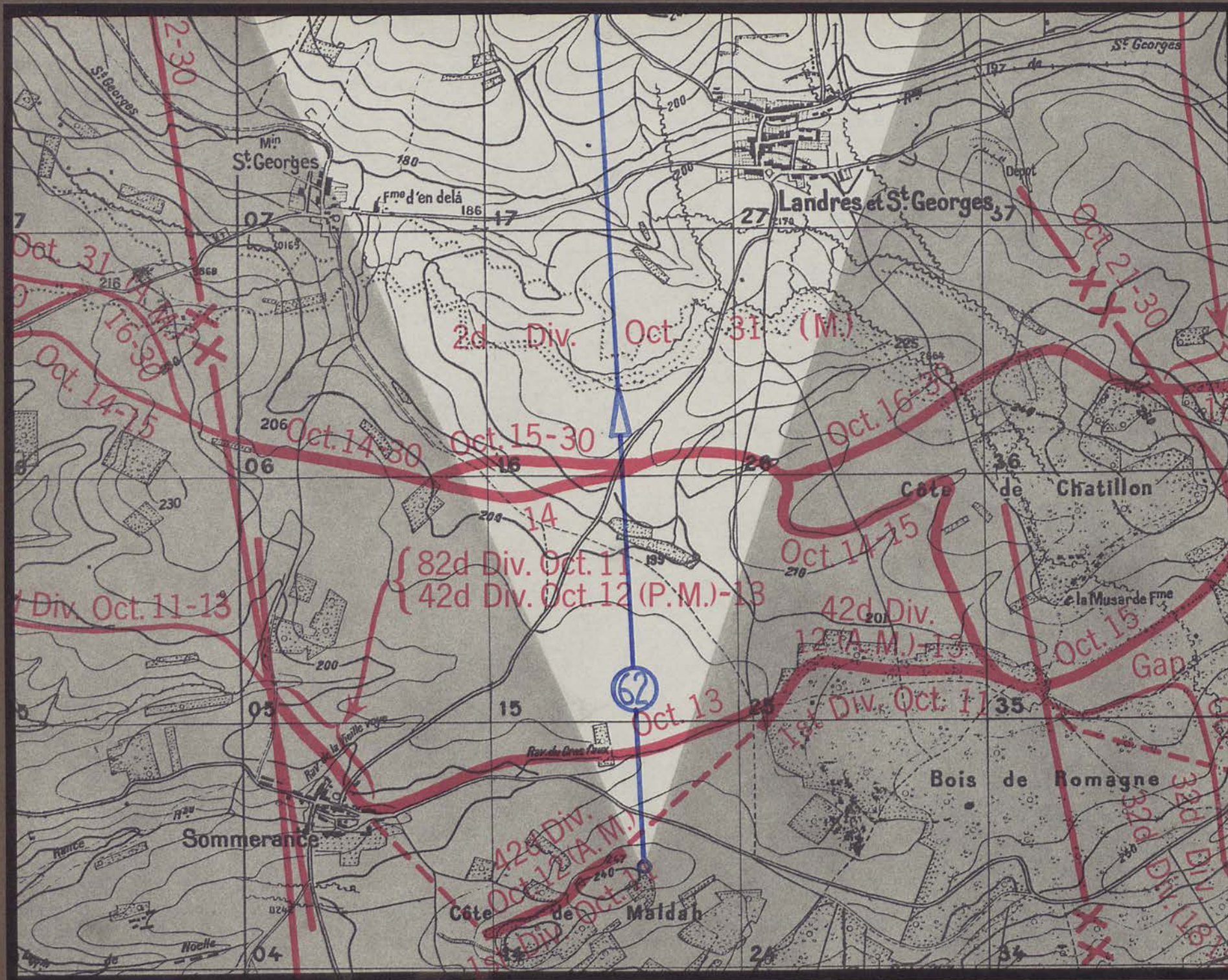
Bois des Hazois

Sommerance - Romagne
road

Cote de Chatillon

Bois de Romagne

La Tuilerie Fin



Sommerance - Romagne
road

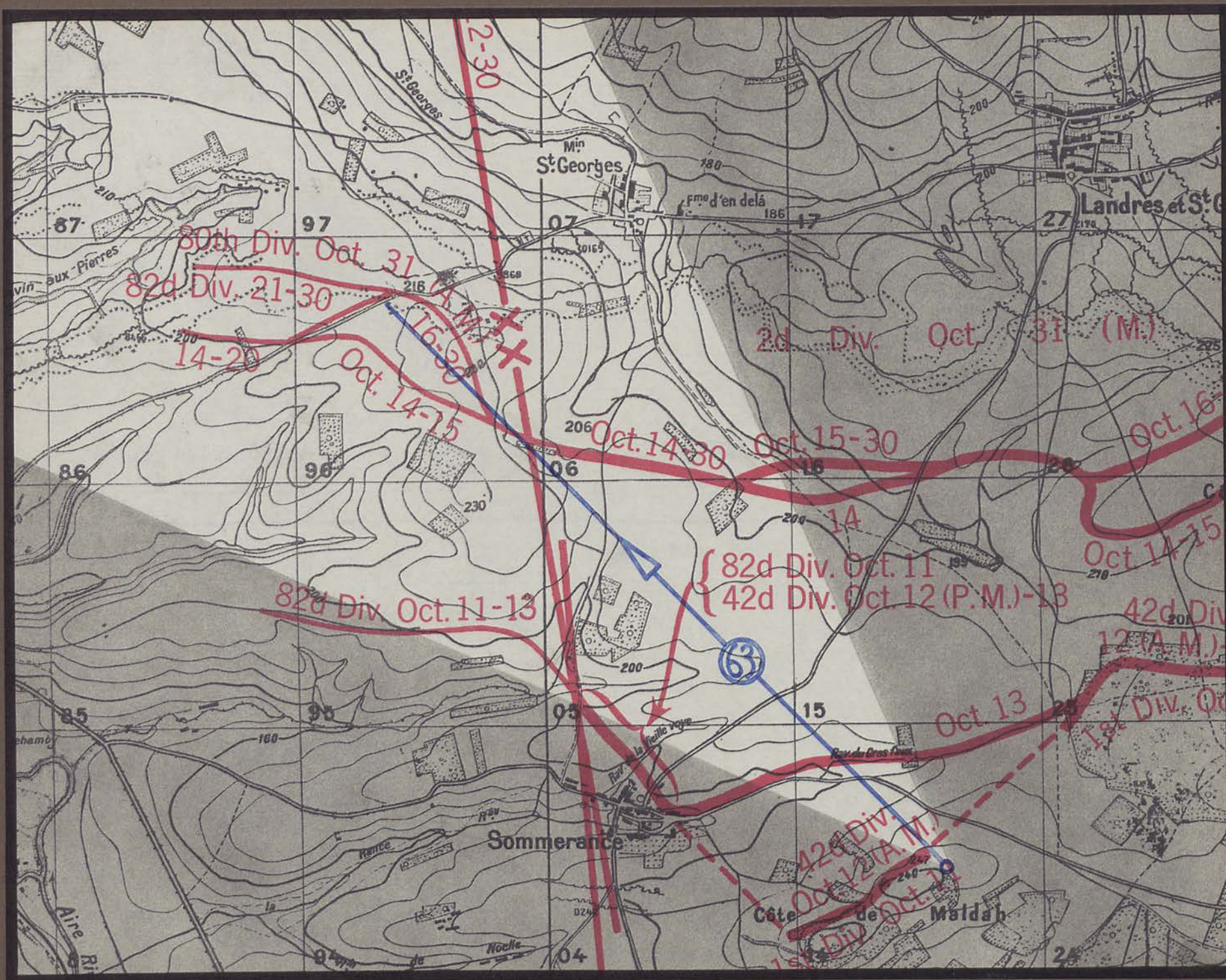
Cote 253

Landres et St Georges

B. l'Epasse

B. des Hazois

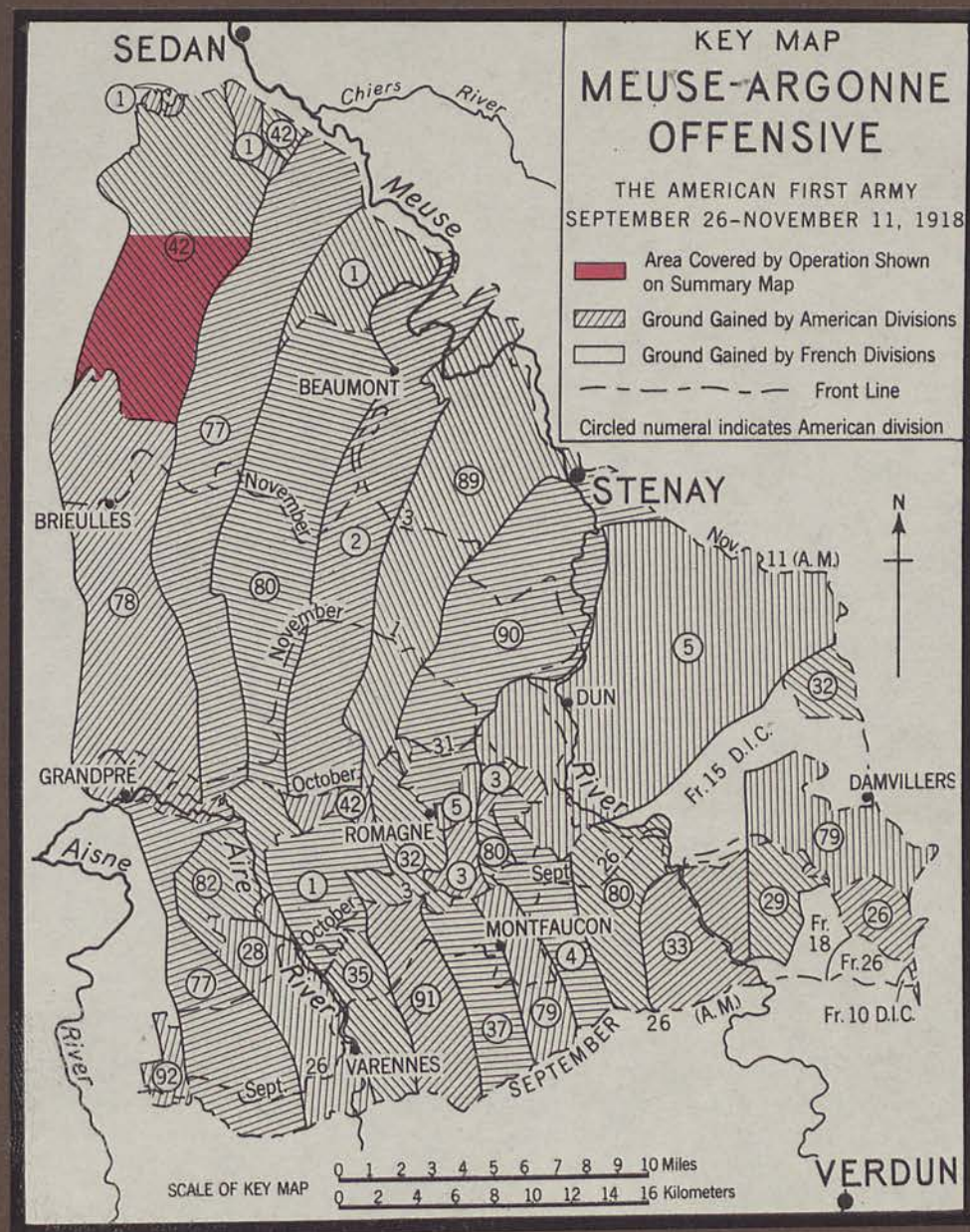


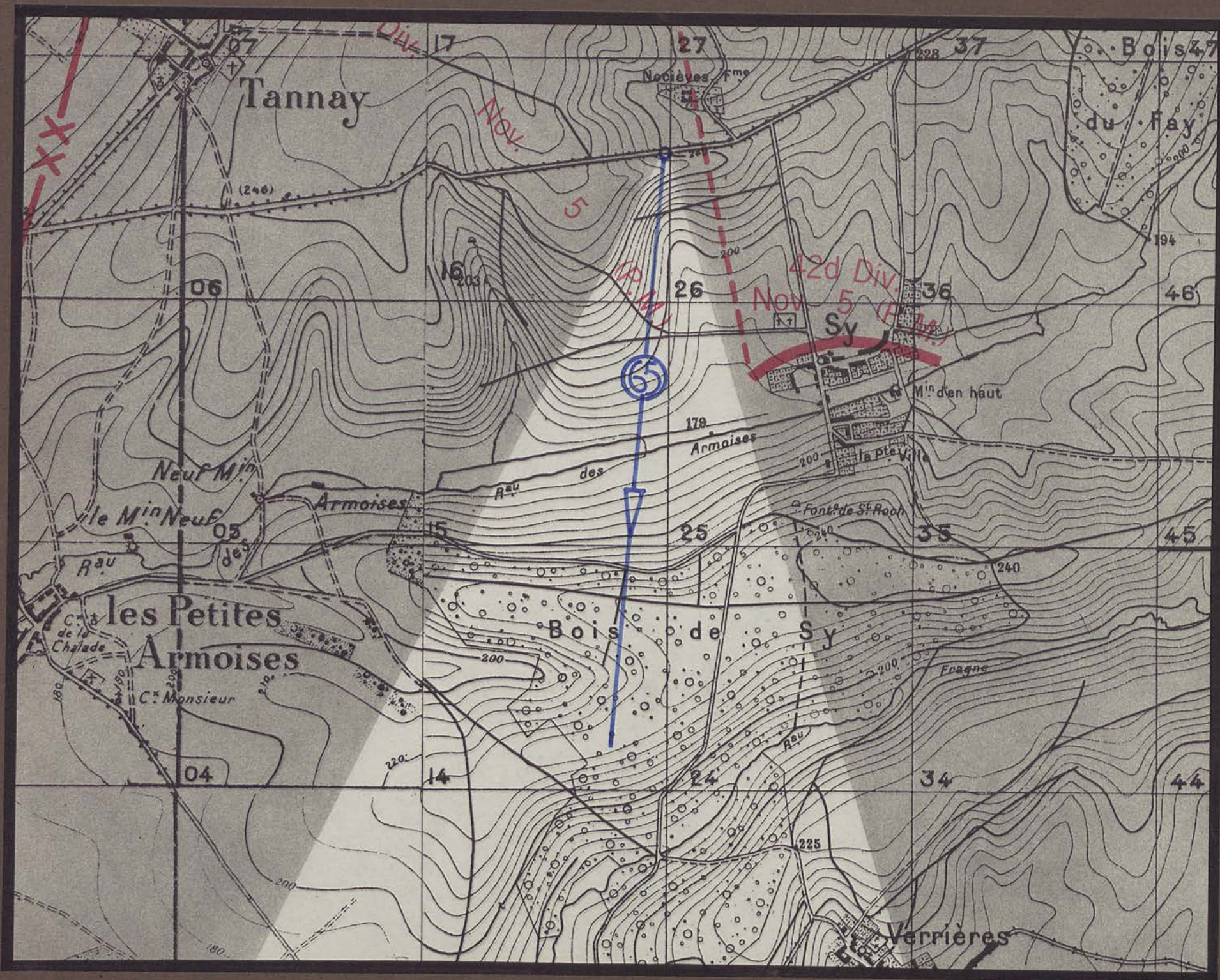






42ND DIVISION
MEUSE-ARGONNE OFFENSIVE
NOVEMBER 2-10, 1918
(SOUTH SHEET)





Sy - Brieuilles-sur-Bar road

Sy - les Petites Armoises
road

Bois de Sy

Chatillon-sur-Bar



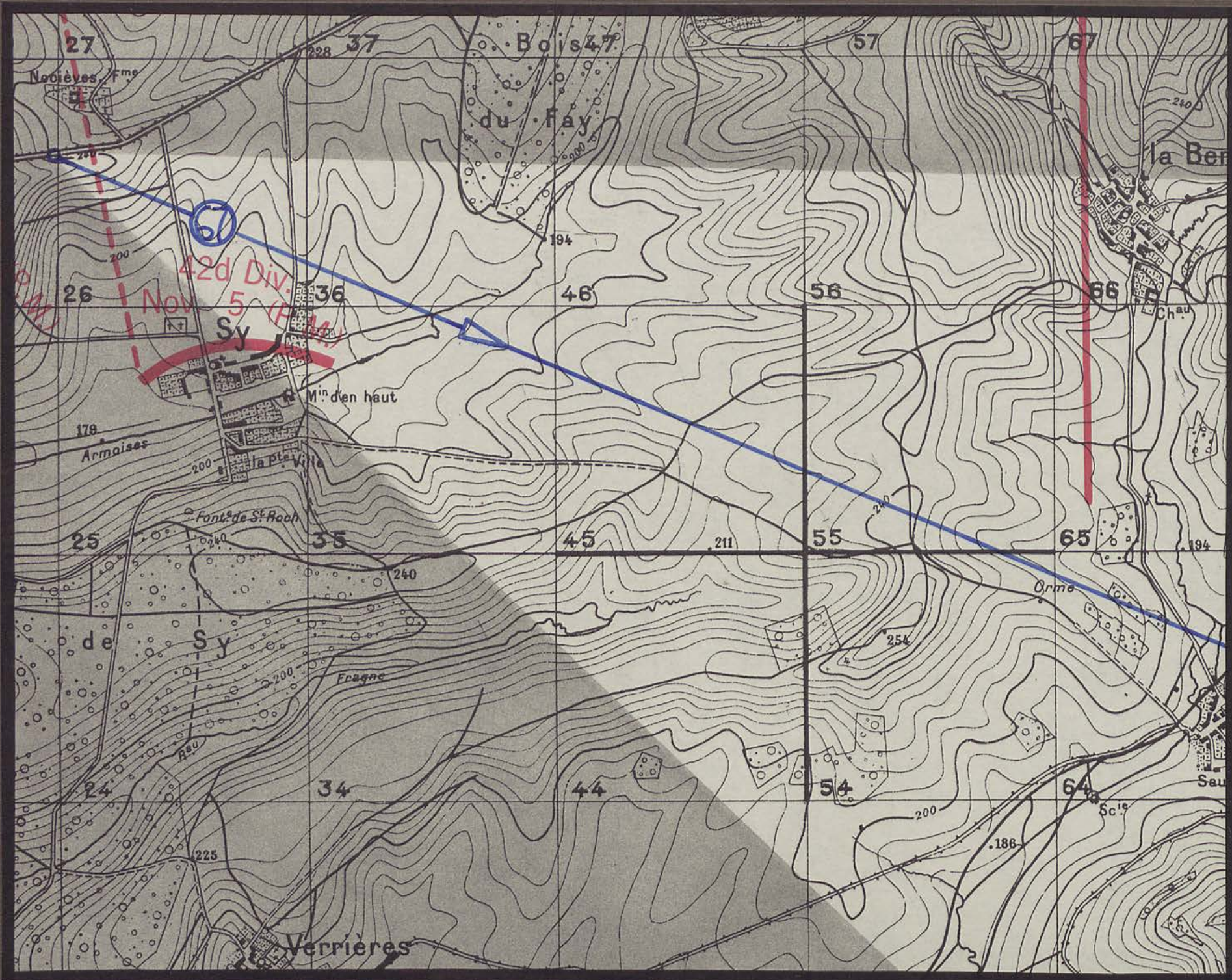


St. Pierremont

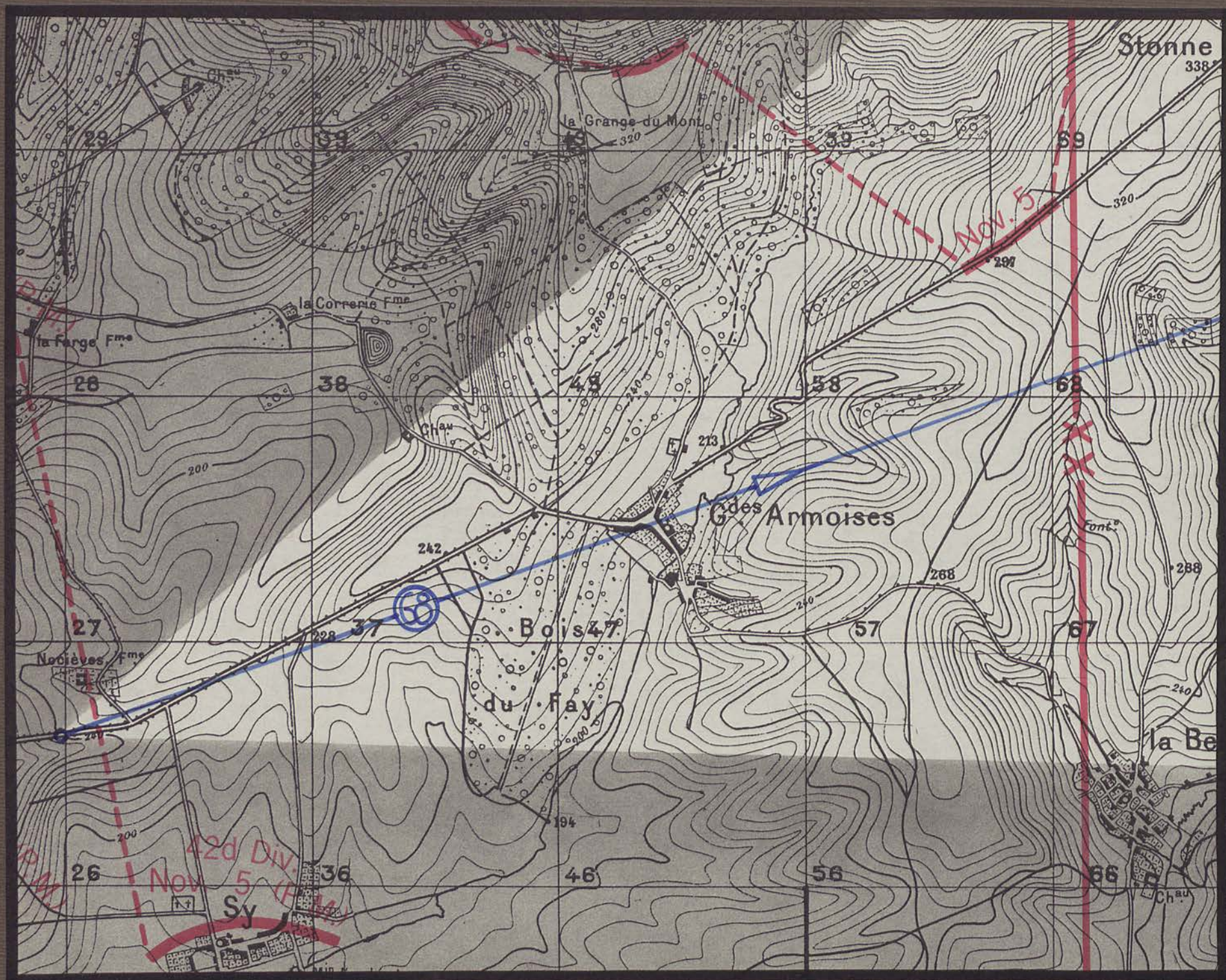
Sy

Bois de Sy

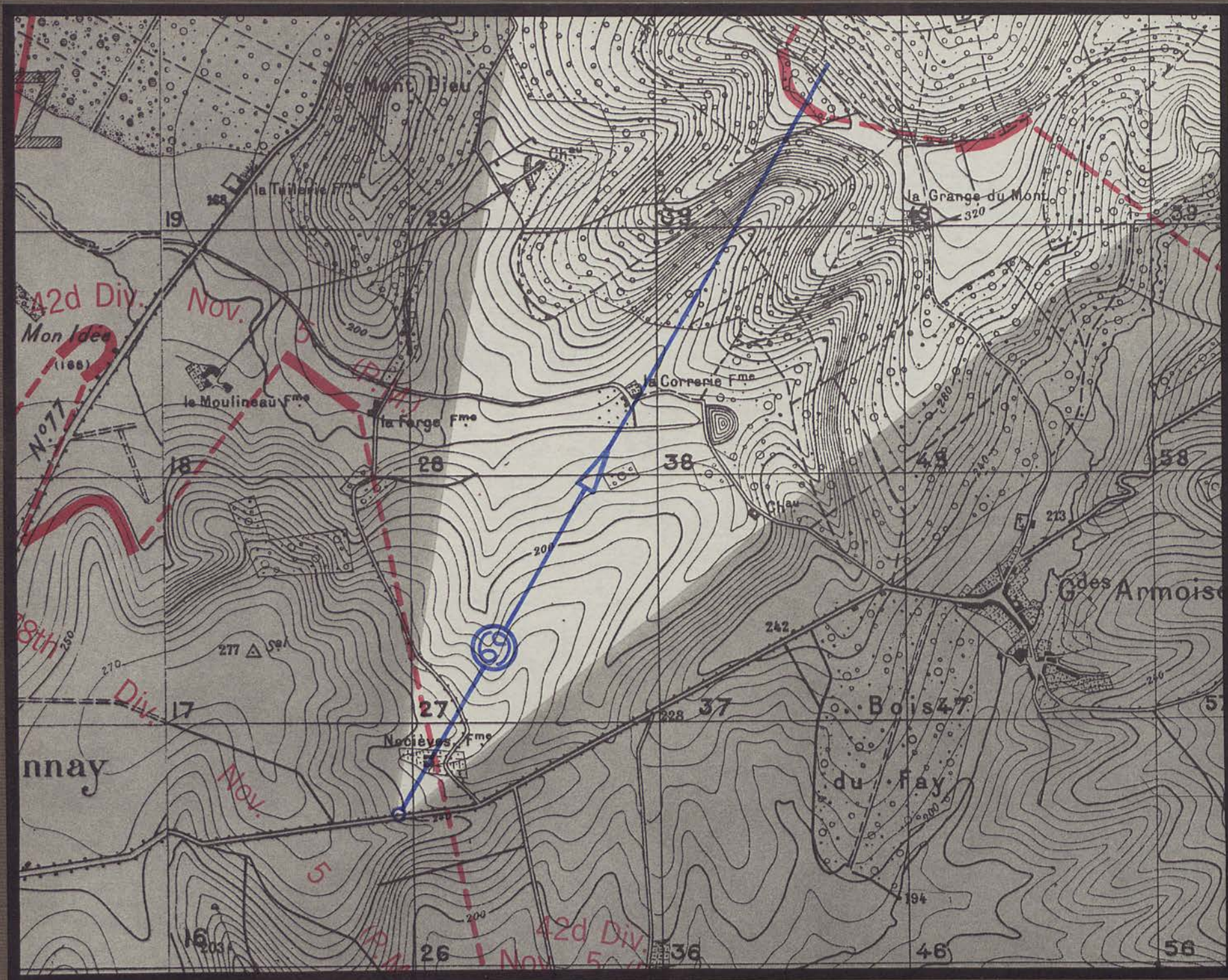










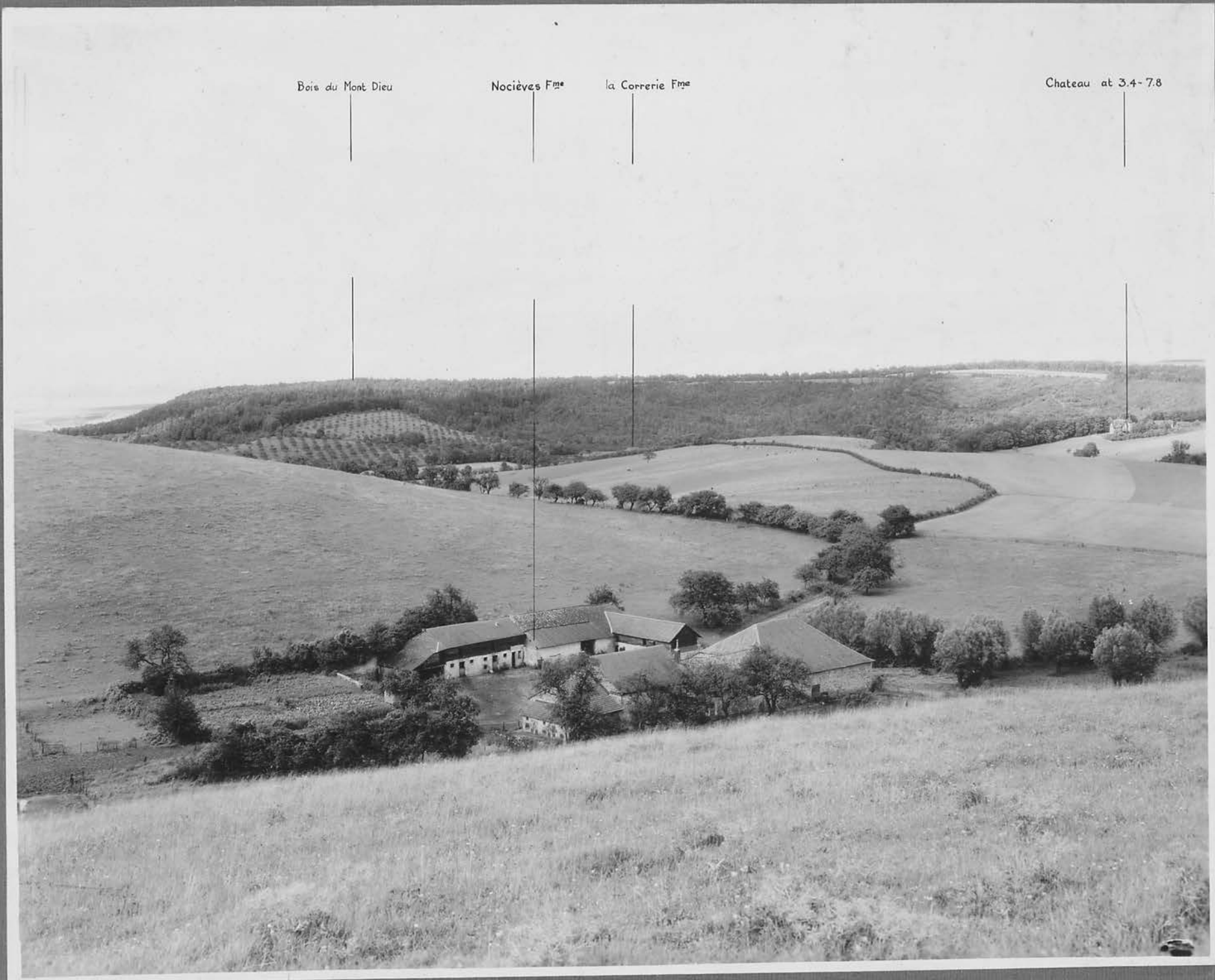


Bois du Mont Dieu

Nocièves F^{me}

la Corriere F^{me}

Chateau at 3.4-7.8





Bois du Mont Dieu

Stonne-Beaumont road

Stonne-Maisoncelle road

la Neuville

road to Artaise

Triage du Ht de Sapogne

Artaise

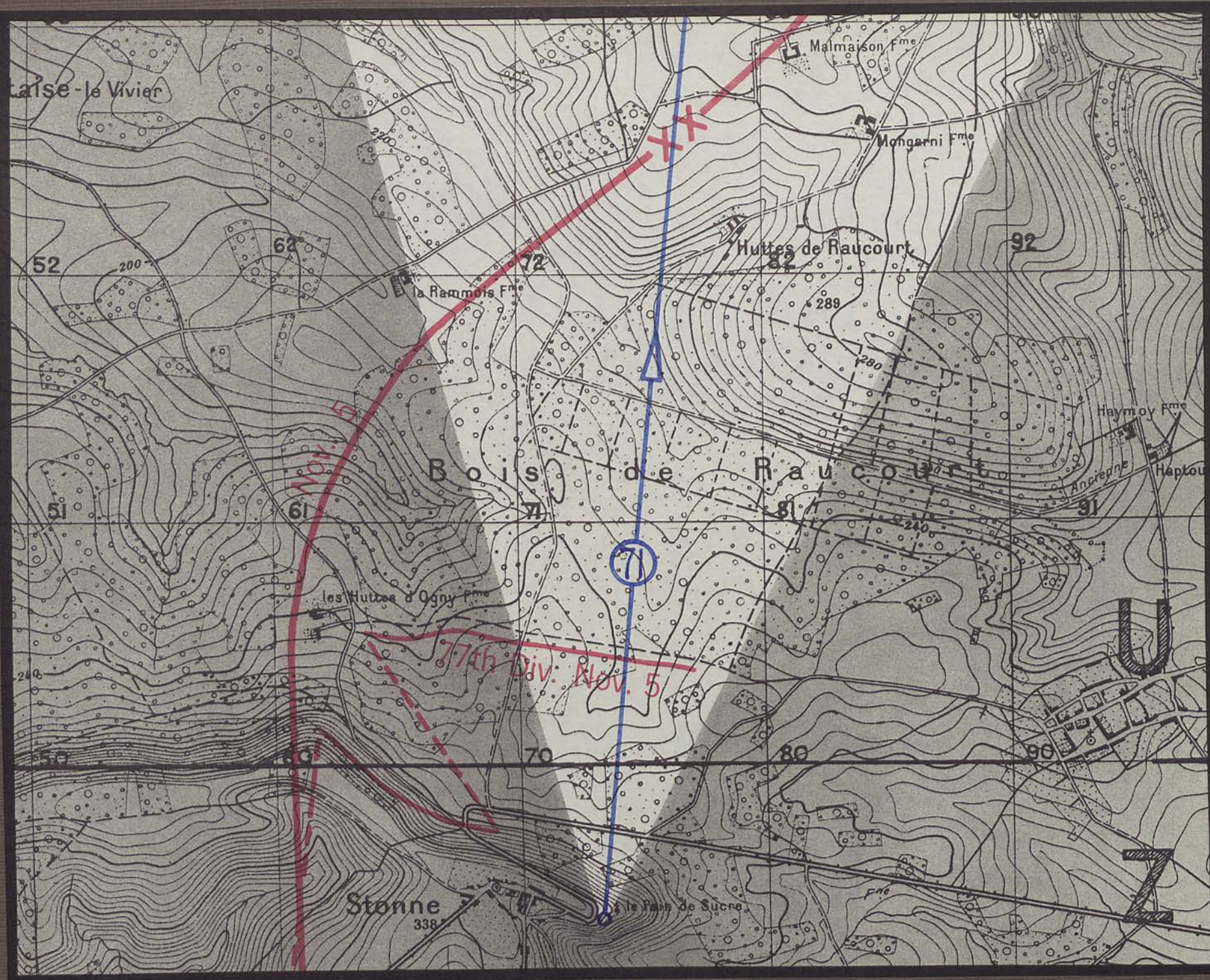
Chémery

Stonne-Beaumont road

Bois de Raucourt

Maisoncelle







Maisoncelle

Bois de Raucourt

Villers-devt. Raucourt

Malmaison Fme.

Mongarni Fme.

Bois de Cogneux

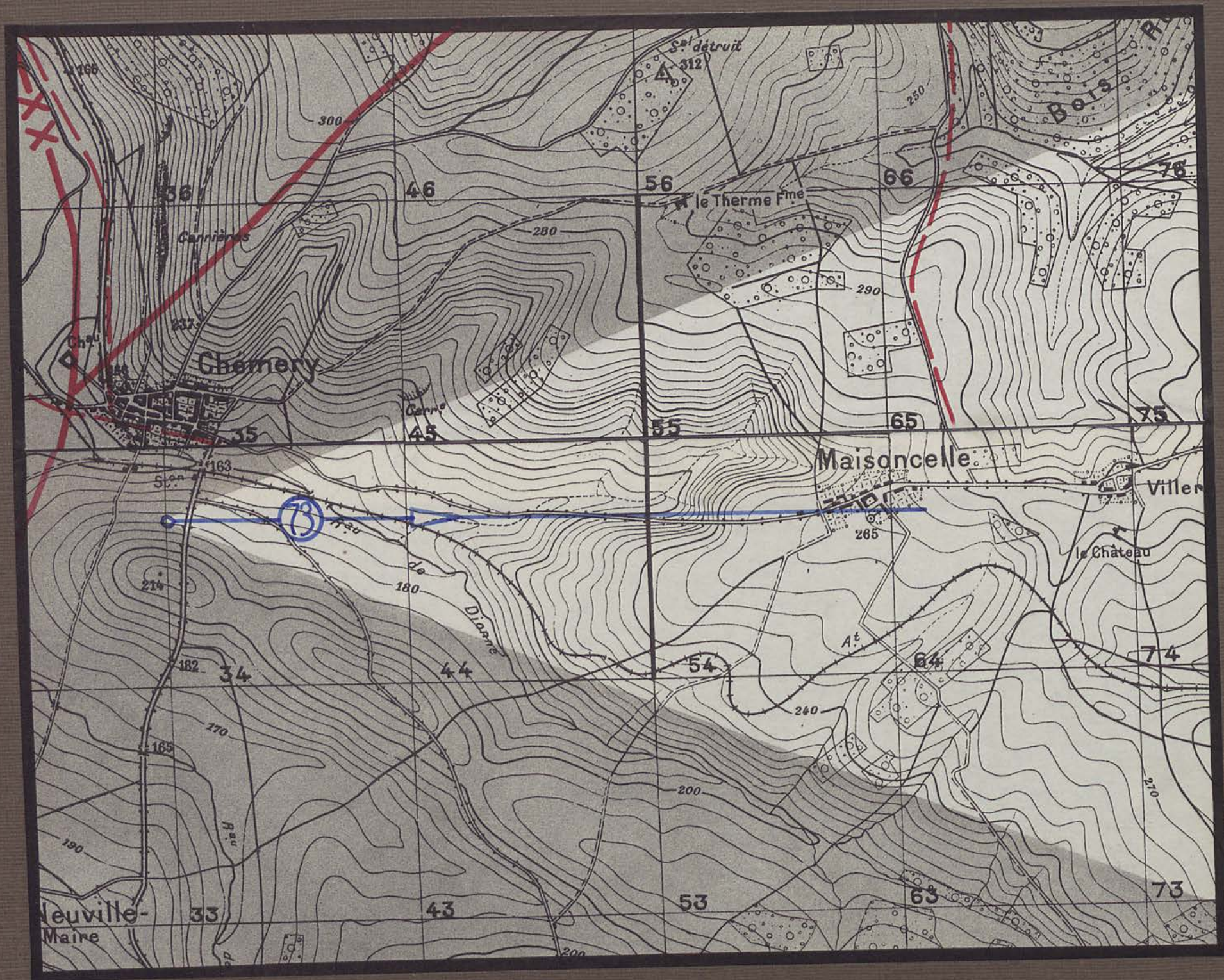




Bois d'Omicourt

Canal

Chémery



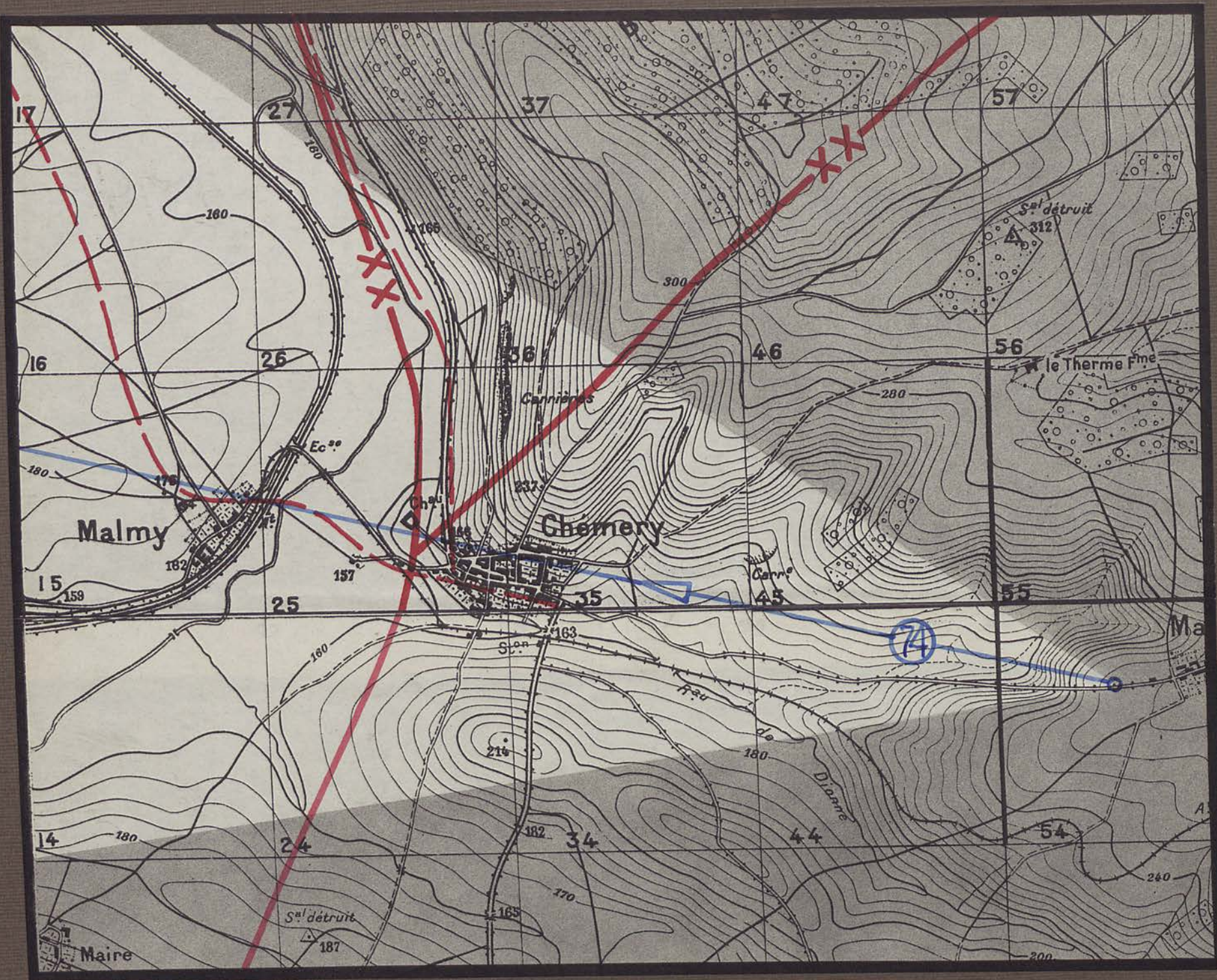


Chémery-Artaise
road

Chémery-Maisoncelle
road

Maisoncelle

R. R.



Maisoncelle -
Chémery road

Forêt de Mazarin

Tannay -
Chémery
road

Artaise -
Chémery
road

Canal

Malmy

Chémery

Triage du Ht de Sapogne

Bar River



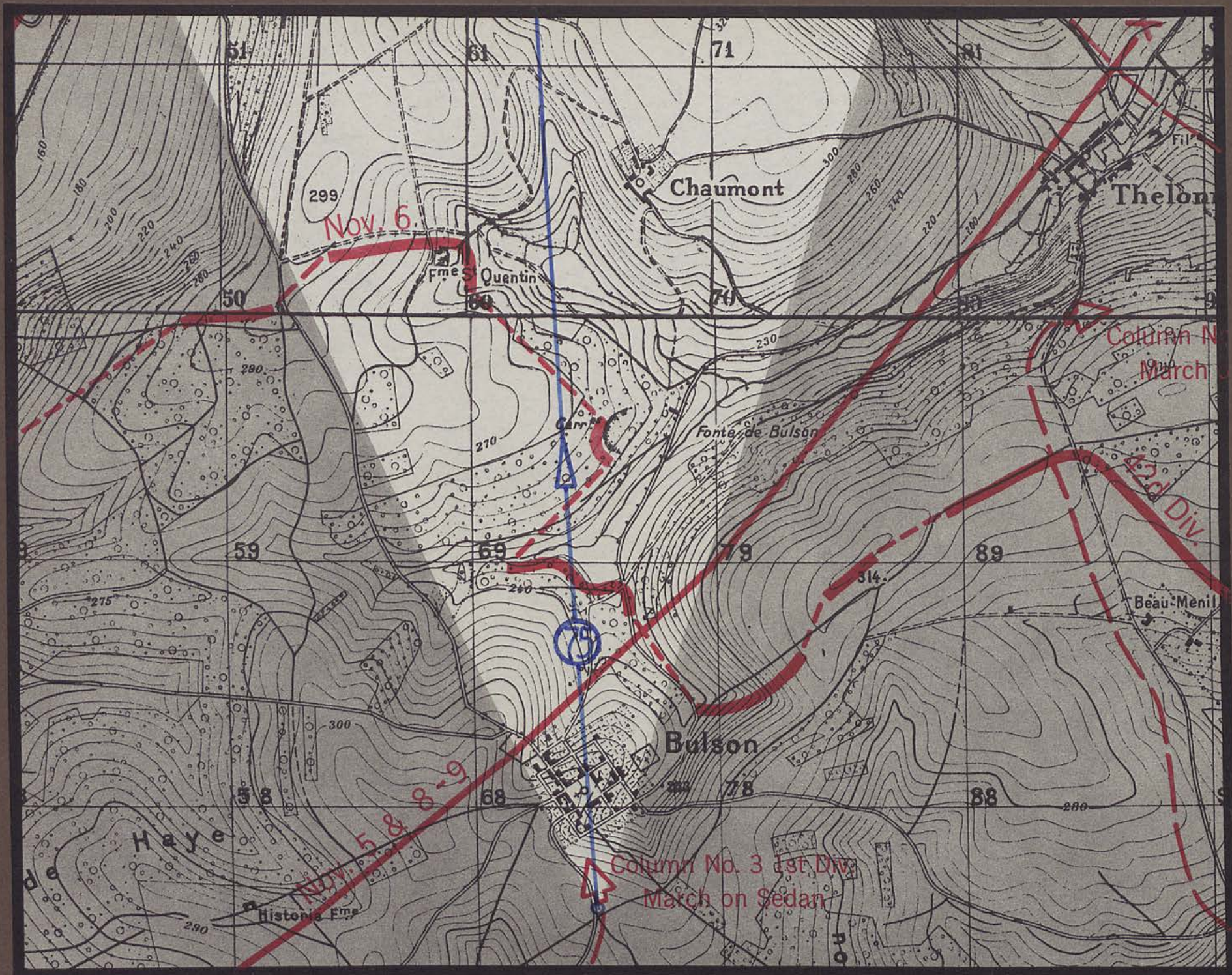
42ND DIVISION

MEUSE-ARGONNE OFFENSIVE

NOVEMBER 2-10, 1918

(NORTH SHEET)





Maisoncelle - Bulson road

E^{me} St. Quentin

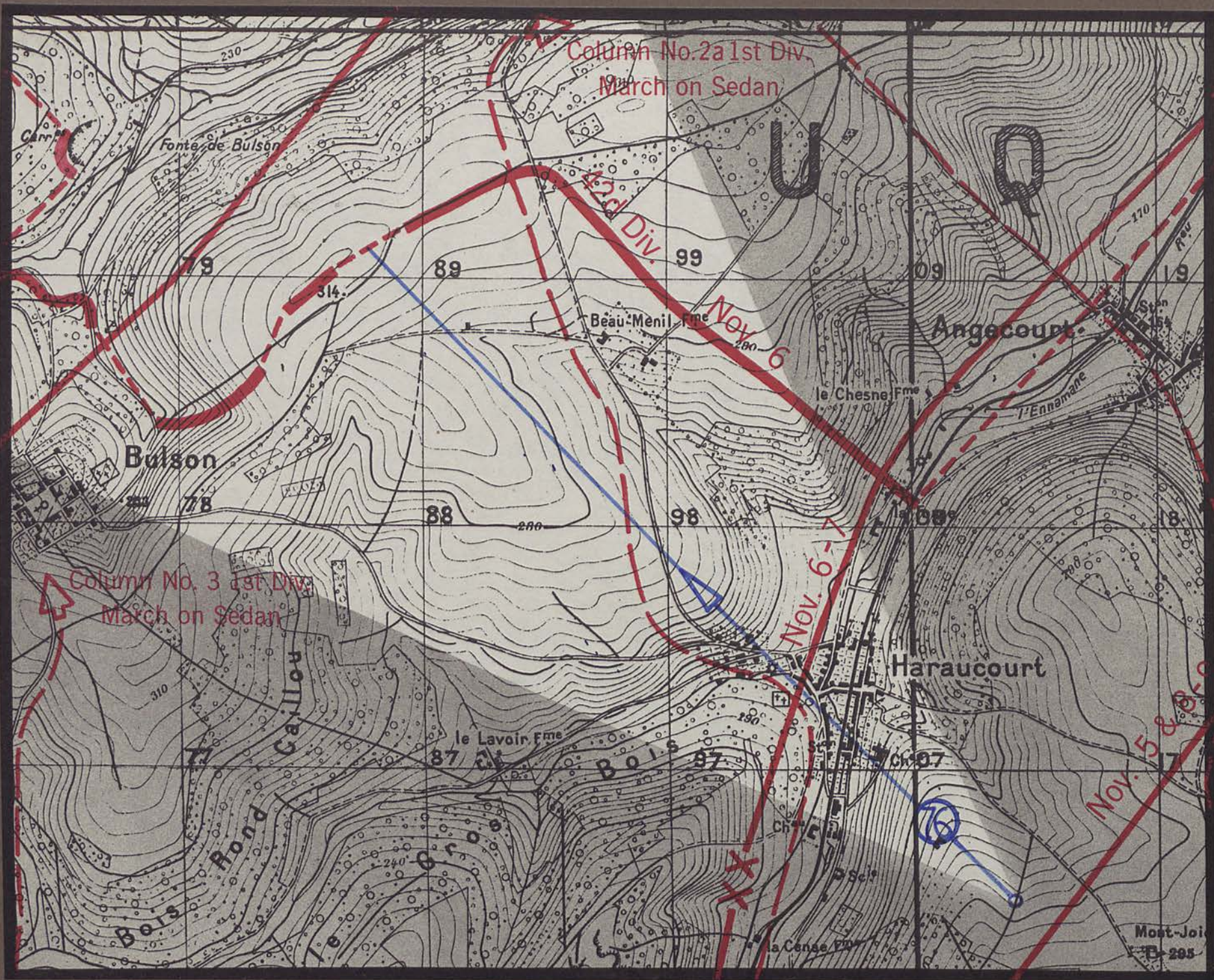
Bois de la
Marfee

Bulson

Chaumont

Signal Hill 346

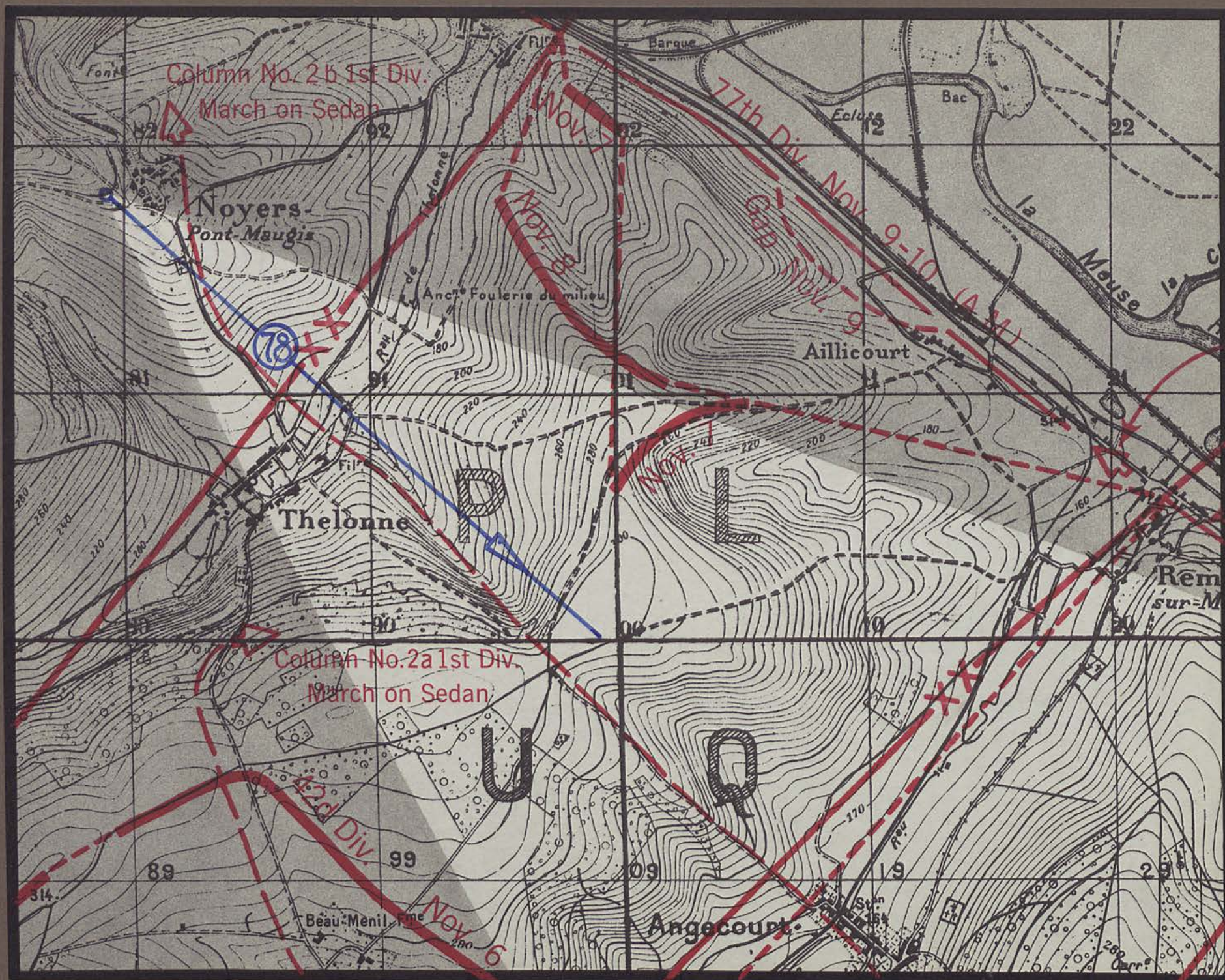












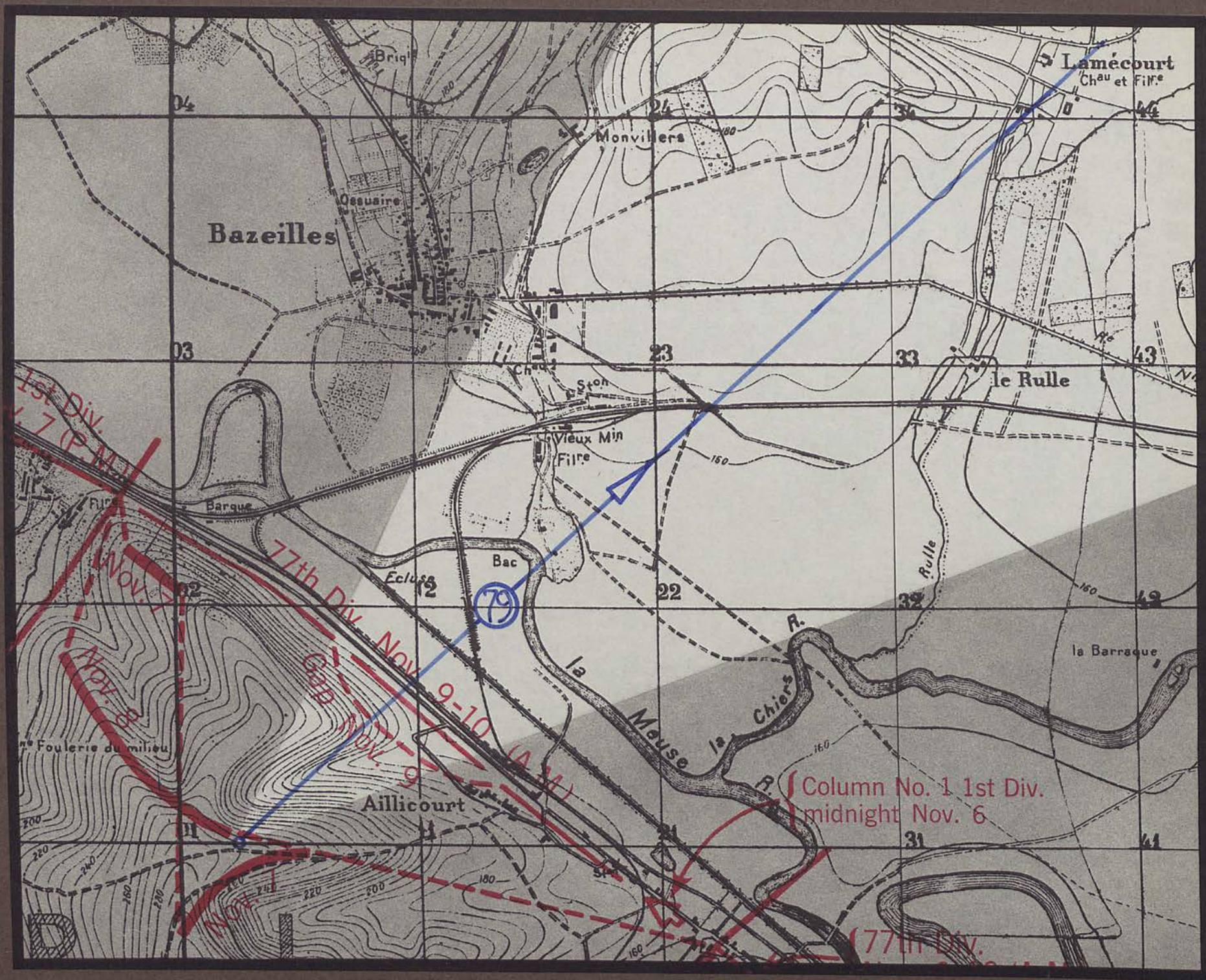


Noyers-Pont-Maugis

trail to Aillicourt

trail to Angecourt

Thelonne



Bazeilles

Lamécourt
Chau et Filre

Monvillers

le Rulle

Vieux Min
Filre

Ecluse

Bac

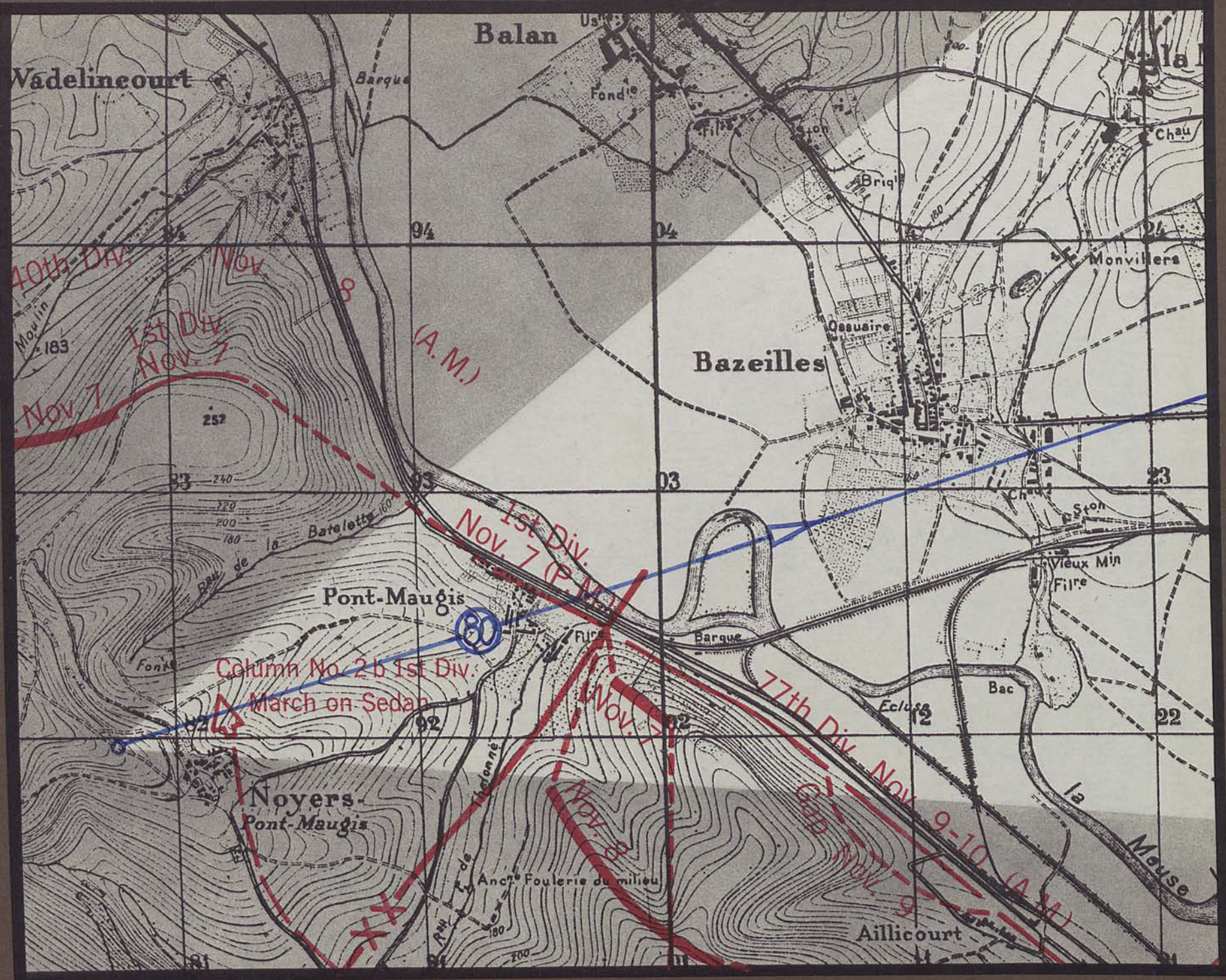
la Meuse
la Chiers R.

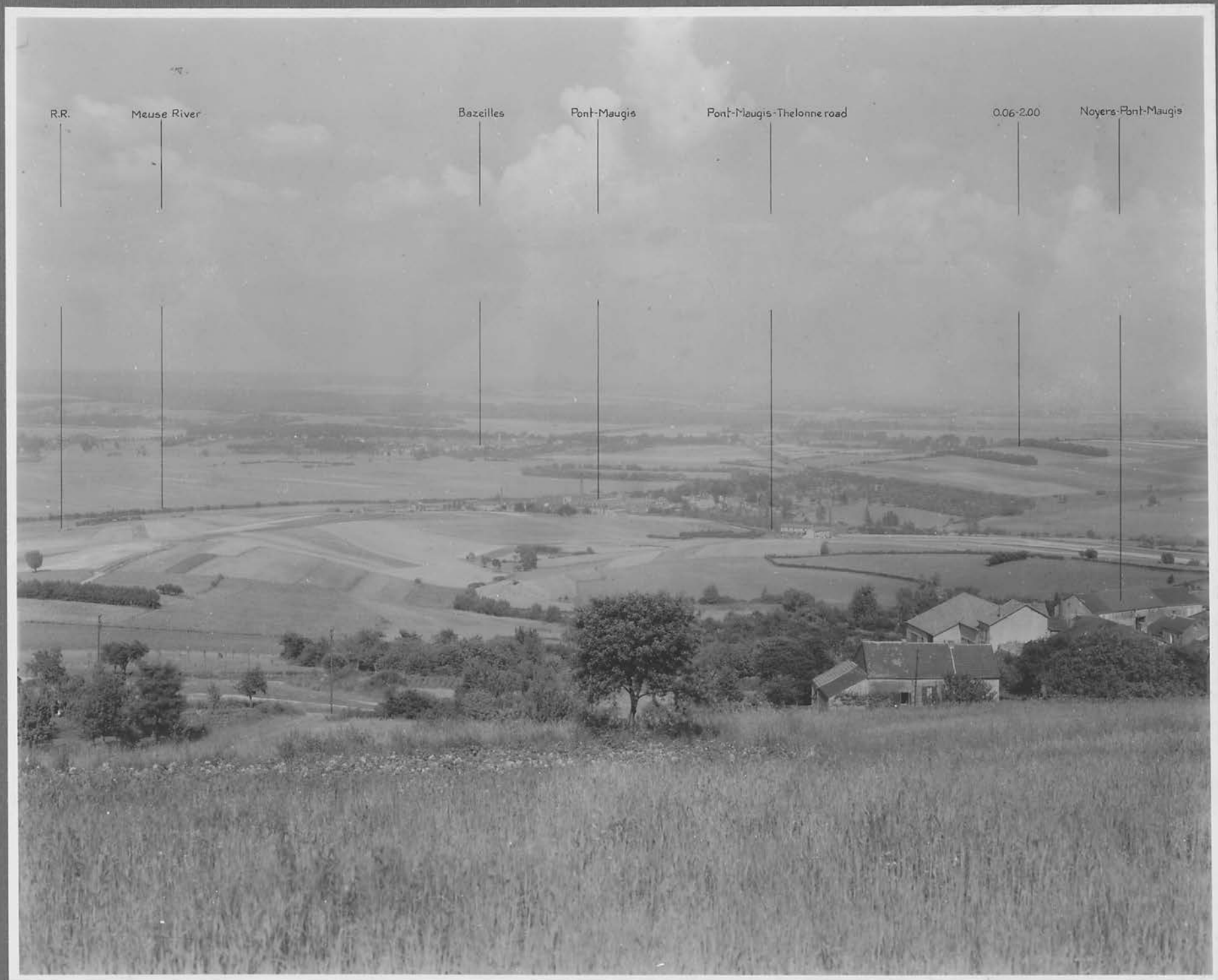
Aillicourt

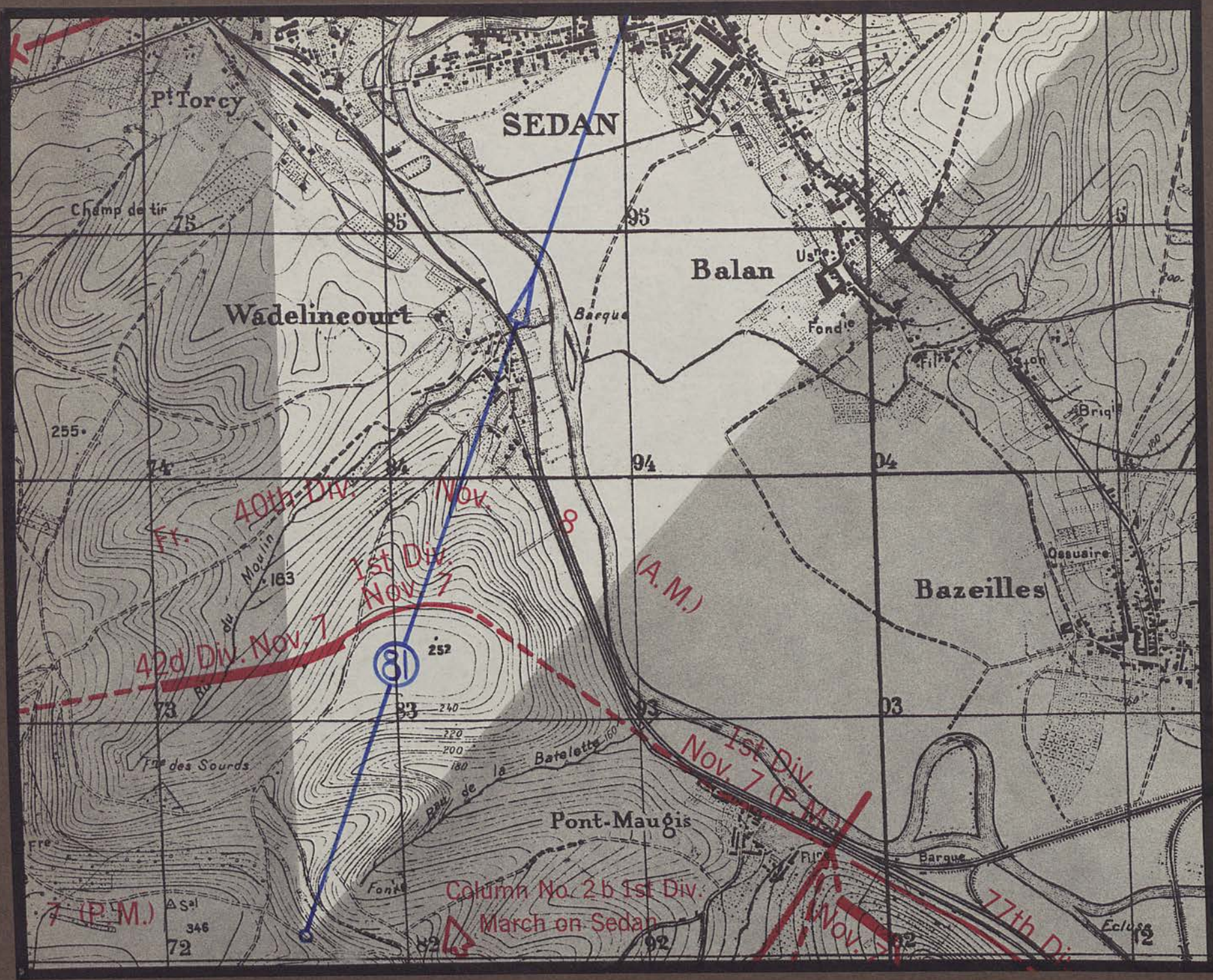
Column No. 1 1st Div.
midnight Nov. 6

(77th Div.)

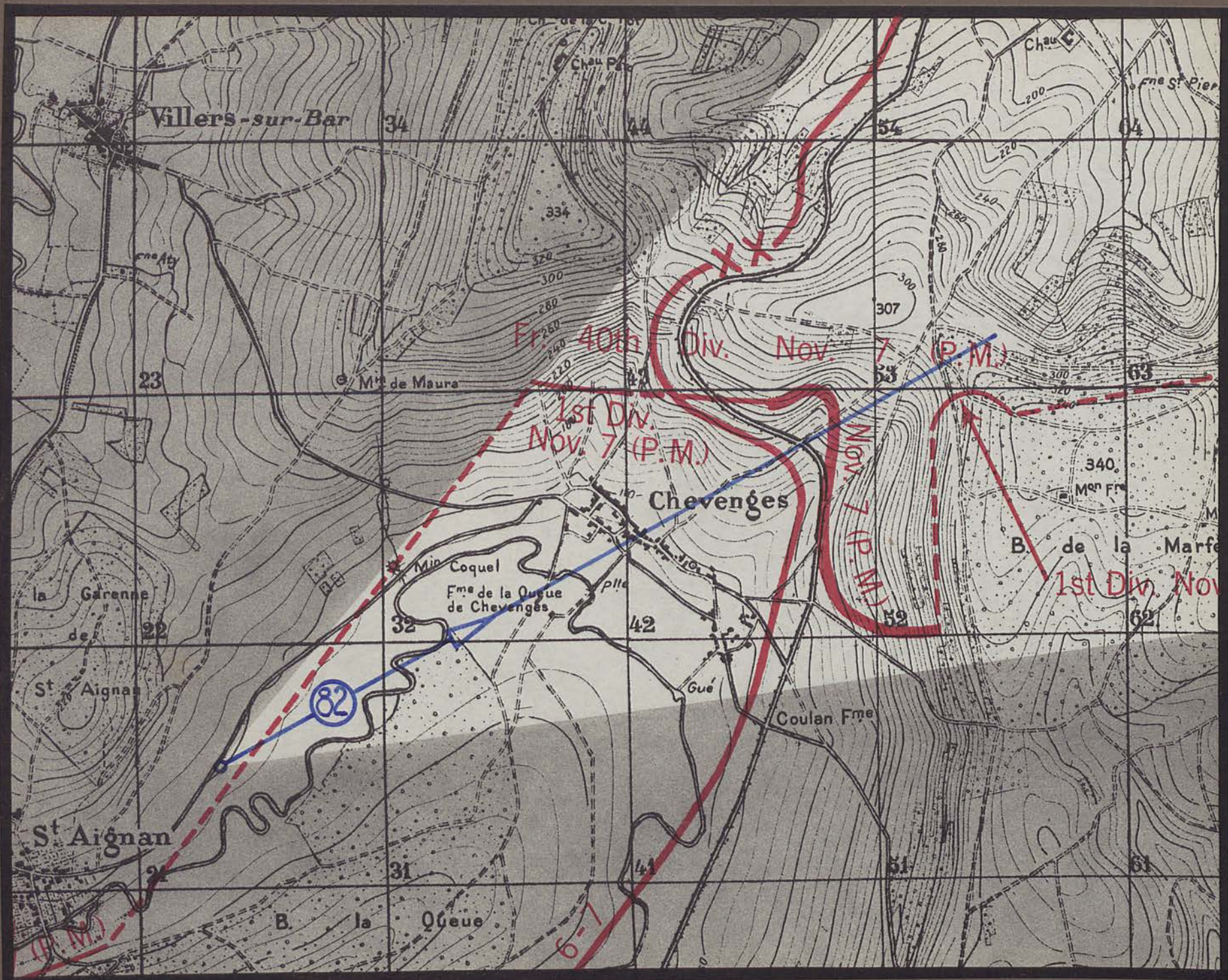




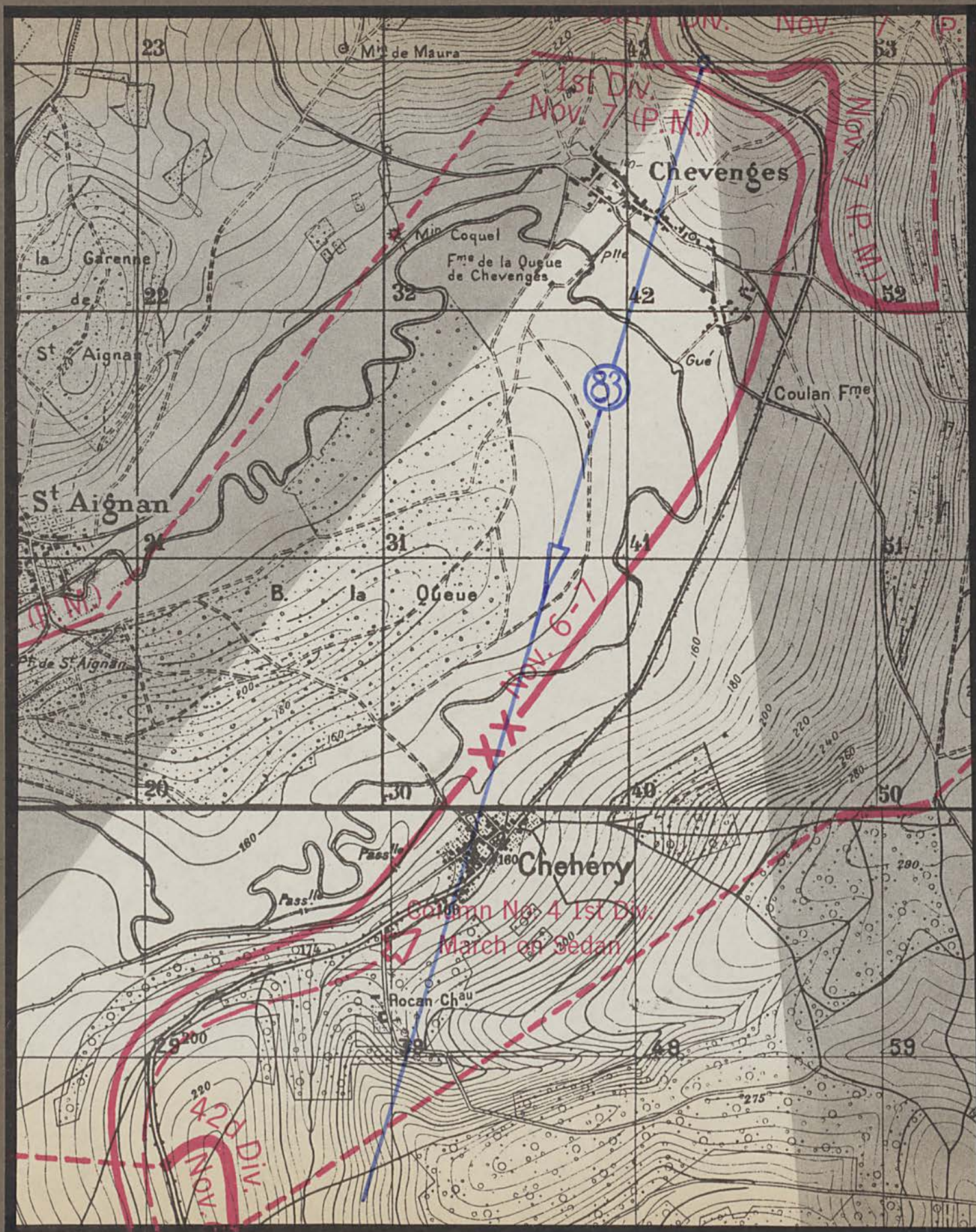




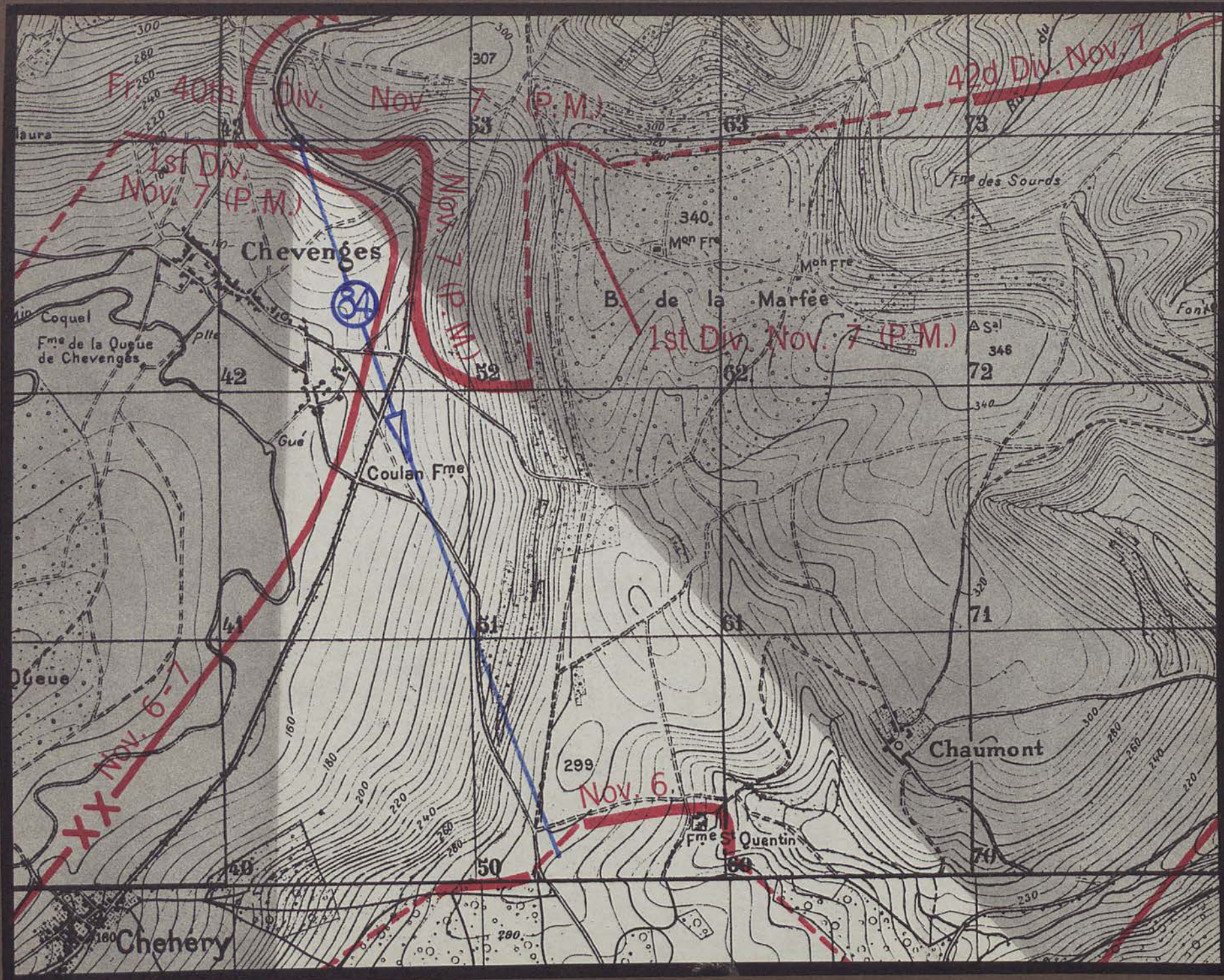


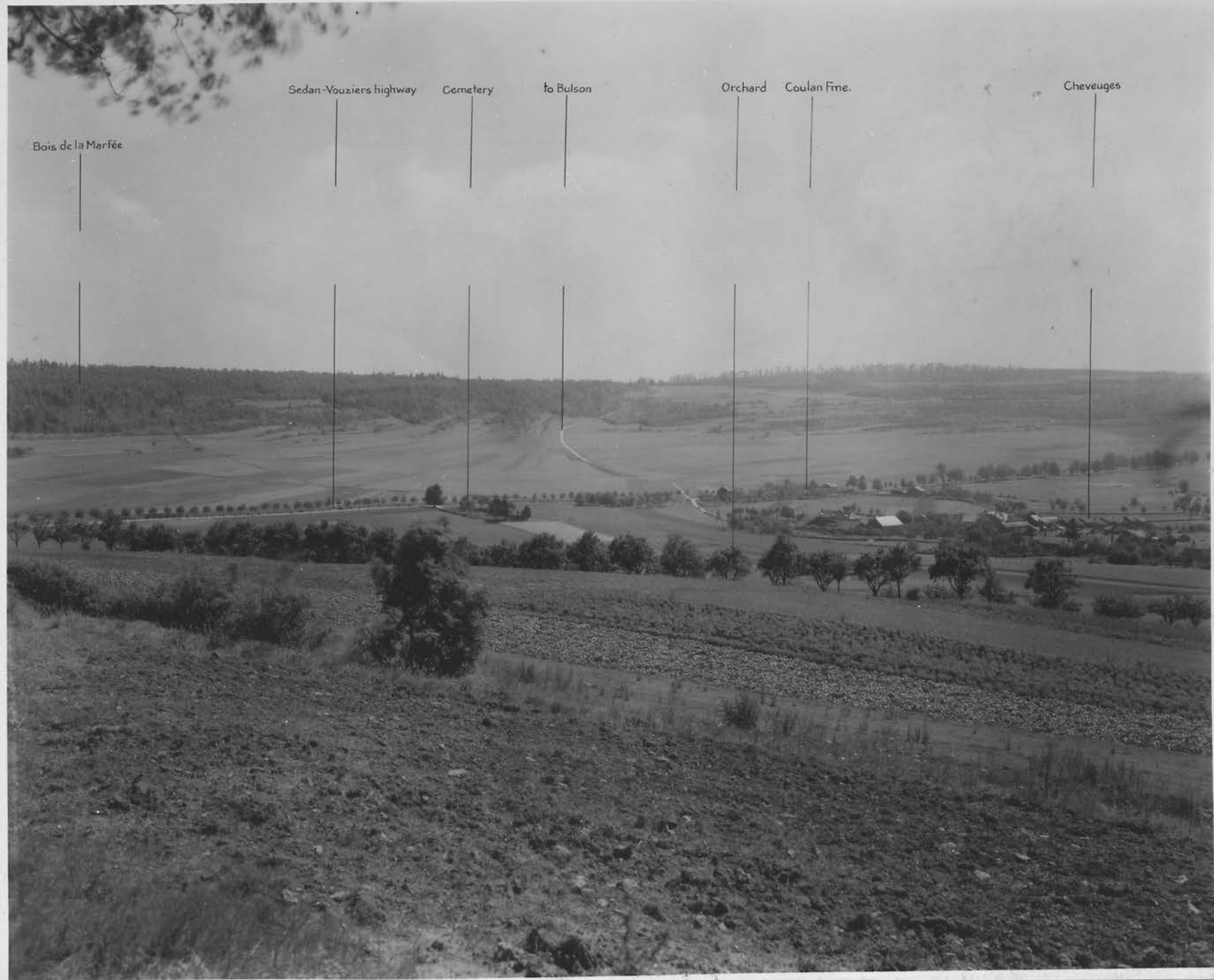












COMMAND AND GENERAL STAFF SCHOOL
Fort Leavenworth, Kansas

COMBINED ARMS RESEARCH LIBRARY
FORT LEAVENWORTH, KS



3 1695 00464 6675

1. Books must be charged (book-loan card) before being checked out by the library.

2. Any item drawn from the Library must be returned within one month.

Exceptions to this regulation are as follows:

- (1) Material issued to classes as a whole.
- (2) Material issued to instructors for professional use.
- (3) New books which are in demand must be returned within one week.
- (4) Books required for faculty use are subject to recall at any time.
- (5) All persons having library material in their possession will return same before leaving the post permanently.
- (6) Books loaned outside the School must be returned within two weeks.

15
3. Reference books and current periodicals will not be removed from the Library.

LIBRARY
COMMAND
AND
STAFF
COLLEGE

