



DEPARTMENT OF THE NAVY

OFFICE OF COUNSEL
NAVAL UNDERSEA WARFARE CENTER DIVISION
1176 HOWELL STREET NEWPORT RI 02841-1708

IN REPLY REFER TO

Attorney Docket No. 110082
15 October 2021

The below identified patent application is available for licensing. Requests for information should be addressed to:

TECHNOLOGY PARTNERSHIP OFFICE
NAVAL UNDERSEA WARFARE CENTER
1176 HOWELL ST.
CODE 00T2, BLDG. 102T
NEWPORT, RI 02841

Serial Number 17/000,448
Filing Date 24 August 2020
Inventor Nicholas Bitsakis

Address any questions concerning this matter to the Technology Partnership Office at (401) 832-3339.

DISTRIBUTION STATEMENT
Approved for Public Release
Distribution is unlimited

**INTERNAL COUNTERMEASURE LAUNCHER
HAVING A HYBRID RAM EJECTION PUMP**

STATEMENT OF GOVERNMENT INTEREST

[0001] The invention described herein was made in the performance of official duties by employees of the U.S. Department of the Navy and may be manufactured, used, or licensed by or for the Government of the United States of America for any governmental purpose without payment of any royalties thereon.

CROSS REFERENCE TO OTHER PATENT APPLICATIONS

[0002] None.

BACKGROUND OF THE INVENTION

(1) Field of the Invention

[0003] This invention relates to submarine launchers and, more particularly, to a launch assembly using an air pressure balanced ejection pump.

(2) Description of the Prior Art

[0004] Submarines may have one or more countermeasure launchers or signal ejectors with multiple penetrations through the hull. Such penetrations may be used to provide seawater for the launcher and a large opening at the muzzle end of a launch tube to provide an exit for the projectile that is to be

launched. When it is desired to launch a device from the launcher, seawater is allowed to enter one side of an ejection pump. Air from a flask of high pressure air is delivered to the ejection pump on the opposite side of a piston holding against the seawater. The air is delivered at a pressure greater than pressure of the seawater at the depth of the submarine. The high pressure air on the piston compresses the water into the breech end of the launch tube, which creates a pressure imbalance between the breech end of the device in the launch tube and the outside seawater. As a result of the pressure imbalance, the device is ejected from the launch tube.

[0005] As the depth of the submarine increases, so does the sea pressure, which increases the pressure on the muzzle end of the launch tube. As a result, the pressure requirement for launching a device from the launch tube increases with the depth of the submarine. The launcher must be able to achieve the necessary pressure for the device to exit the launch tube. Preferably, the launcher should be of an economically efficient design and be capable of remote firing with a short launch readiness time. The launcher should be configured to facilitate easy assembly and disassembly for maintenance and repair.

[0006] It is thus desirable to have an internal countermeasure launcher that minimizes hull penetrations,

auxiliary hydraulic components, and provides a balance pressure launch.

SUMMARY OF THE INVENTION

[0007] The present disclosure describes a pneumatically powered, hydraulically assisted and controlled, fixed displacement ram ejection pump. The ejection pump capitalizes on the power and dynamic response available from utilization of air pressure, as well as control from the incorporation of the hydraulics.

[0008] According to an aspect of the invention, a projectile launching system includes a launch tube. An impulse cylinder is connected to the launch tube. An impulse piston is disposed within the impulse cylinder. The impulse piston has a water side and an air side. The water side is in fluid communication with the launch tube. The air side is in fluid connection with a high pressure air source. A hydraulic cylinder is operatively connected to the impulse cylinder. A hydraulic piston is disposed within the hydraulic cylinder. A shaft between the impulse cylinder and the hydraulic cylinder has a first end and a second end. The first end of the shaft is connected to the impulse piston and the second end of the shaft is connected to the hydraulic piston. A control valve is connected to the

hydraulic cylinder and controls movement of the hydraulic piston, which in turn controls movement of the impulse piston.

[0009] According to an exemplary hybrid ram ejection pump herein, a first cylinder has a water impulse outlet aperture connected to a launch device and a high pressure air inlet aperture connected to a high pressure air source. A first piston is located in the first cylinder between the water impulse outlet aperture and the high pressure air inlet aperture. The first piston is moveable between a rest position and a launch position. A second cylinder is connected to the first cylinder. A second piston is located in the second cylinder. The second piston is moveable between a stop position and a firing position. A shaft connects the first piston to the second piston. A control valve is connected to the second cylinder. A controller is connected to the control valve.

[0010] According to an exemplary method herein, an impulse cylinder is connected to a launch tube. The impulse cylinder has a water side and an air side. The water side is at a pressure approximately equal to seawater pressure in the launch tube and the air side is at a pressure greater than approximately 100 psi more than the pressure in the launch tube. A piston is provided between the water side and the air side in the impulse cylinder. The piston has a shaft connected to a hydraulic control assembly. The piston is held in an at-battery

position by exerting pressure on the shaft using the hydraulic control assembly. Responsive to an order to launch, the hydraulic control assembly releases the pressure on the shaft. Air on the air side of the impulse cylinder is allowed to expand and move the piston toward a launch position. As the piston moves toward the launch position, the piston forces water on the water side of the impulse cylinder into the launch tube. Acceleration and deceleration of the piston is controlled by adjusting the pressure on the shaft according to a predetermined velocity profile.

BRIEF DESCRIPTION OF THE DRAWINGS

[0011] Reference is made to the accompanying drawings in which are shown an illustrative embodiment of the invention, wherein corresponding reference characters indicate corresponding parts, and wherein:

[0012] **FIG. 1** shows a launch system according to devices and methods herein;

[0013] **FIG. 2** shows a cut-away view of an ejection pump according to devices and methods herein; and

[0014] **FIG. 3** is a flow chart illustrating a specific embodiment of the invention herein.

DETAILED DESCRIPTION OF INVENTION

[0015] Referring to **FIG. 1**, a launch system, indicated generally as **101**, includes one or more launch tubes **104** connected to an ejection pump **107**. Each launch tube **104** has a muzzle end **110** and a breech end **113**. For submarine systems, the muzzle end **110** can include a muzzle valve **116**, which typically can be a hydraulically operated ball valve. The breech end **113** can include a breech door (not shown) for inserting a countermeasure device or other projectile for launching from the launch system **101**. The launch tube **104** can also include a vent valve **119** and a drain valve **122**.

[0016] The launch tube **104** is connected by piping **125** to the ejection pump **107** through an impulse isolation valve **128**. The impulse isolation valve **128** can have a hydraulic operator **131** to select which launch tube **104** to direct the ejection impulse to.

[0017] As shown in **FIG. 2**, the ejection pump **107** includes a pump body **202** having an impulse cylinder **205** defined by a cavity wall **208**. The cavity wall **208** is generally cylindrical and includes opposing end walls **211**, **212**. End walls **211**, **212** conform to the shape of cavity wall **208**. The impulse cylinder **205** is connected to the launch tube **104** by piping **125** through the impulse isolation valve **128**.

[0018] An impulse piston **215** is disposed within the impulse cylinder **205**. The impulse piston **215** has a cross-sectional

shape generally conforming to the cavity wall **208**, and is supported on a piston shaft **218**. The impulse piston **215** and the piston shaft **218** are coaxially disposed within the impulse cylinder **205**. The impulse piston **215** is slidable within the impulse cylinder **205** between a rest position and a launch position. The impulse cylinder **205** includes a water impulse outlet aperture **221** and a high pressure air inlet aperture **224**. The impulse piston **215** divides the impulse cylinder **205** into a water side **227** and an air side **230**. The water side **227** is in fluid communication with the launch tubes **104**. The air side **230** is in fluid connection with a high pressure air source, such as air chamber **233**.

[0019] The impulse piston **215** includes opposing surfaces **236**, **237** with dual, low friction seals at the periphery of the surfaces **236** and **237** to seal against cavity wall **208**. A bleed port **240** is provided between the opposing surfaces **236**, **237**. Any fluid leakage from the water side **227**, or air leakage from the air side **230**, is carried through the center of the piston shaft **218** to a gravity drain. This minimizes the possibility of water in the air side, and vice versa.

[0020] As shown in **FIG. 2**, the impulse cylinder **205** has a bore diameter of approximately 6-18 inches in which the impulse piston **215** rides. It has been found that increasing the piston diameter increases system efficiency. This is due to the fact

that imbalance on the piston shaft **218** is minimized as the cylinder diameter grows.

[0021] Further, the stroke of the impulse piston **215** between the rest position and the launch position is approximately the same as the piston diameter. The stroke length is determined by the amount of water displacement required for launch, as well as the water column deceleration criterion. Minimizing stroke creates higher water column deceleration rates which increases risk of cavitation.

[0022] An air chamber **233** integral to the ejection pump **107** is much preferred over a separate air flask (not shown) with connecting piping for the efficient expansion of air into the air side **230** of the impulse cylinder **205**. According to devices and methods herein, the air chamber **233** may have a volume of approximately three cubic feet. Another advantage of an air chamber **233** integral to the ejection pump **107** is simplified ship arrangements, due to minimization of the number of foundations required. Air chamber **233** is joined to a high pressure air system available on the vessel.

[0023] A hydraulic control assembly **243** is connected to the ejection pump **107**. The hydraulic control assembly **243** is further joined to receive hydraulic fluid from a hydraulic pump or hydraulic pressure source that is commonly available aboard a vessel. The hydraulic control assembly **243** includes a hydraulic

cylinder **246** operatively connected to the impulse cylinder **205**. The hydraulic cylinder **246** includes a housing **249** defining an interior chamber **252**. The piston shaft **218** extends through end wall **212** of the impulse cylinder **205** into the interior chamber **252** of the hydraulic cylinder **246**. The piston shaft **218** has a first end **255** and a second end **258**. The first end **255** is connected to the impulse piston **215** and the second end **258** is connected to a hydraulic piston **261** slidably disposed in the hydraulic cylinder **246**. The hydraulic piston **261** is moveable between a stop position and a firing position. The hydraulic control assembly **243** includes a control valve **264** connected to the hydraulic cylinder **246**. The control valve **264** controls and restrains movement of the hydraulic piston **261**, which in turn controls and restrains movement of the impulse piston **215**.

[0024] As shown in **FIG. 2**, the hydraulic cylinder **246** contains a hydraulic piston **261** that is approximately 3-5 inches in diameter with a piston shaft **218** approximately 1.5-3 inches in diameter. The hydraulic cylinder **246** may comprise a dual rod cylinder, which is preferred, to equalize hydraulic fluid flow through both inlet and outlet ports of the control valve **264**. A dual rod cylinder also provides a path for any leakage flow from the impulse cylinder **205** to drain.

[0025] In a preferred embodiment, the control valve **264** comprises a hydraulic servo control valve close coupled to the

hydraulic cylinder **246**, for optimum hydraulic performance.

Control of the control valve **264** is provided through a feedback control system, capable of command specific velocity profiles, as described below. Other types of control valves can be used.

[0026] The launch system **101** shown in the **FIGs.** is designed for compactness and length minimization. According to devices and methods herein, the mechanical components of the ejection pump **107** are the impulse cylinder **205**, which houses the impulse piston **215**, the hydraulic cylinder **246**, which houses the hydraulic piston **261**; and the control valve **264** that controls movement of the hydraulic piston **261**, which in turn controls movement of the impulse piston **215**. The mechanical configuration of the components may vary by design and by ship installation constraints.

[0027] Referring again to **FIG. 1**, a controller or a control panel **134** is connected to the control valve **264** and a plurality of sensors. Transducers or other appropriate devices that measure sea pressure, such as at **137**, and pressure in the air chamber **233**, such as sensor **140** may be monitored by the control panel **134**. The control panel **134** maintains pressure in the air chamber **233** by operation of dual solenoid control valves **143**, **144**. One of the solenoid control valves, such as **143**, can be used to maintain the air pressure in the air chamber **233** to a pressure required for launch. After operation of the launch

system **101**, air can be vented through the other of the solenoid control valves, such as **144**.

[0028] **FIG. 2** shows the ejection pump **107** in the at-battery position (ready to fire). When ready to fire, the sea water (on the water side **227** of the impulse piston **215**) is at sea pressure. The air pressure (on the air side **230** of the impulse piston **215**) is a function of depth pressure. That is, the water side **227** is at pressure approximately equal to seawater pressure in the launch tube **104** and the air side **230** is at a pressure greater than approximately 100 psi to 150 psi more than the pressure in the launch tube **104**. This pressure imbalance on the impulse piston **215** is countered by hydraulic pressure on the hydraulic piston **261** in the hydraulic cylinder **246**, causing the impulse piston **215** and hydraulic piston **261** to remain motionless. When launch is commanded, the hydraulic control assembly **243** causes the control valve **264** to release the pressure on the hydraulic piston **261**. This allows the air in the air chamber **233** to expand, and causes the impulse piston **215** to move the impulse piston **215** toward a launch position. The hydraulic control assembly **243** resists motion of the impulse piston **215** from prior to time of launch and through at least a portion of the launch stroke. The hydraulic control assembly **243** assists in motion of the impulse piston **215** during the latter portion of the launch stroke, controlling system dynamics

and preventing a rapid deceleration / cavitation / mechanical contacting in the sea water using a predetermined launch profile. Numerous launch pulses can be obtained through appropriate feedback selection.

[0029] A position sensor **147**, may be used to determine the position and direction of motion (if any) of the piston shaft **218**. Upon receiving position indicating signals, the control panel **134** provides a control signal to the hydraulic control assembly **243**. Thus, position of the piston shaft **218** and correspondingly the position of the impulse piston **215** may be sensed by the position sensor **147** and used to control the flow of hydraulic fluid in the hydraulic control assembly **243**. In some embodiments, the position sensor may be a mechanical position indicating device, such as wheel, or an electronic position indicating device, such as a magnetic or photoelectric device, or a displacement transducer.

[0030] The launch system **101** may include a dedicated hydraulic accumulator **150** in the vicinity of the ejection pump **107** providing hydraulic fluid under pressure to the control valve **264**. The hydraulic accumulator **150** can provide the high flow rate, short duration, hydraulic fluid requirements of the ejection pump **107**. The size of the hydraulic accumulator **150** may be approximately 2-6 gallons.

[0031] As shown in the **FIGs.**, the impulse isolation valve **128** is at a right angle to the centerline of the impulse cylinder **205**. This provides a minimum length for the ejection pump **107**. Alternatively, if length is available in the desired location, the impulse isolation valve **128** can be on the centerline of the impulse cylinder **205**. In addition, the hydraulic cylinder **246** is shown close coupled to the impulse cylinder **205**. This is a preferred arrangement to simplify ship installation and to minimize shaft alignment issues.

[0032] **FIG. 3** is a flow chart illustrating a specific embodiment of the invention herein. At **313**, an impulse cylinder is connected to a launch tube. The impulse cylinder has a water side and an air side. The water side is at a pressure approximately equal to seawater pressure in the launch tube and the air side is at a pressure greater than approximately 100 psi more than the pressure in the launch tube. At **323**, a piston is provided between the water side and the air side in the impulse cylinder. The piston has a shaft connected to a hydraulic control assembly. At **333**, the piston is held in an at-battery position by exerting pressure on the shaft using the hydraulic control assembly. Responsive to an order to launch, the hydraulic control assembly releases the pressure on the shaft, at **343**. Air on the air side of the impulse cylinder is allowed to expand and move the piston toward a launch position, at **353**.

As the piston moves toward the launch position, the piston forces water on the water side of the impulse cylinder into the launch tube, at **363**. Acceleration and deceleration of the piston is controlled by adjusting the pressure on the shaft according to a predetermined velocity profile, at **373**.

[0033] The invention has been described with references to specific embodiments. While particular values, relationships, materials, and steps have been set forth for purposes of describing concepts of the present disclosure, it will be appreciated by persons skilled in the art that numerous variations and/or modifications may be made to the invention as shown in the disclosed embodiments without departing from the spirit or scope of the basic concepts and operating principles of the invention as broadly described. It should be recognized that, in the light of the above teachings, those skilled in the art could modify those specifics without departing from the invention taught herein. Having now fully set forth certain embodiments and modifications of the concept underlying the present disclosure, various other embodiments as well as potential variations and modifications of the embodiments shown and described herein will obviously occur to those skilled in the art upon becoming familiar with such underlying concept. It is intended to include all such modifications, alternatives, and other embodiments insofar as they come within the scope of the

appended claims or equivalents thereof. It should be understood, therefore, that the invention might be practiced otherwise than as specifically set forth herein. Consequently, the present embodiments are to be considered in all respects as illustrative and not restrictive.

[0034] The terminology used herein is for the purpose of describing particular systems and methods only and is not intended to be limiting of this disclosure. As used herein, the singular forms "a", "an", and "the" are intended to include the plural forms as well, unless the context clearly indicates otherwise. It will be further understood that the terms "comprises", "comprising", "includes", and/or "including", when used in this specification, specify the presence of stated features, integers, steps, operations, elements, and/or components, but do not preclude the presence or addition of one or more other features, integers, steps, operations, elements, components, and/or groups thereof. Further, the terms "automated" or "automatically" mean that once a process is started (by a machine or a user); one or more machines perform the process without further input from any user.

[0035] The corresponding structures, materials, acts, and equivalents of all means or step plus function elements in the claims below are intended to include any structure, material, or act for performing the function in combination with other

claimed elements as specifically claimed. The descriptions of the various embodiments herein have been presented for purposes of illustration but are not intended to be exhaustive or limited to the embodiments disclosed. Many modifications and variations will be apparent to those of ordinary skill in the art without departing from the scope and spirit of the described embodiments. The terminology used herein was chosen to best explain the principles of the embodiments, the practical application or technical improvement over technologies found in the marketplace, or to enable others of ordinary skill in the art to understand the embodiments disclosed herein.

[0036] For example, terms such as "right", "left", "vertical", "horizontal", "top", "bottom", "upper", "lower", "under", "below", "underlying", "over", "overlying", "parallel", "perpendicular", etc., as used herein, are understood to be relative locations as they are oriented and illustrated in the drawings (unless otherwise indicated). Terms such as "touching", "on", "in direct contact", "abutting", "directly adjacent to", etc., mean that at least one element physically contacts another element (without other elements separating the described elements).

[0037] Finally, any numerical parameters set forth in the specification and attached claims are approximations (for example, by using the term "about") that may vary depending upon

the desired properties sought to be obtained by the present disclosure. At the very least, and not as an attempt to limit the application of the doctrine of equivalents to the scope of the claims, each numerical parameter should at least be construed in light of the number of significant digits and by applying ordinary rounding.

**INTERNAL COUNTERMEASURE LAUNCHER
HAVING A HYBRID RAM EJECTION PUMP**

ABSTRACT OF THE DISCLOSURE

A launcher includes an impulse cylinder connected to a launch tube. An impulse piston, disposed within the impulse cylinder has a water side and an air side. The water side is in fluid communication with the launch tube. The air side is in fluid connection with a high pressure air source. A shaft connects a hydraulic cylinder to the impulse cylinder. The shaft connects a hydraulic piston to the impulse piston. A control valve is connected to the hydraulic cylinder and controls movement of the hydraulic piston, which in turn controls movement of the impulse piston. Upon launch, the control valve allows movement of the hydraulic piston which allows movement of the impulse piston, providing water behind a projectile.

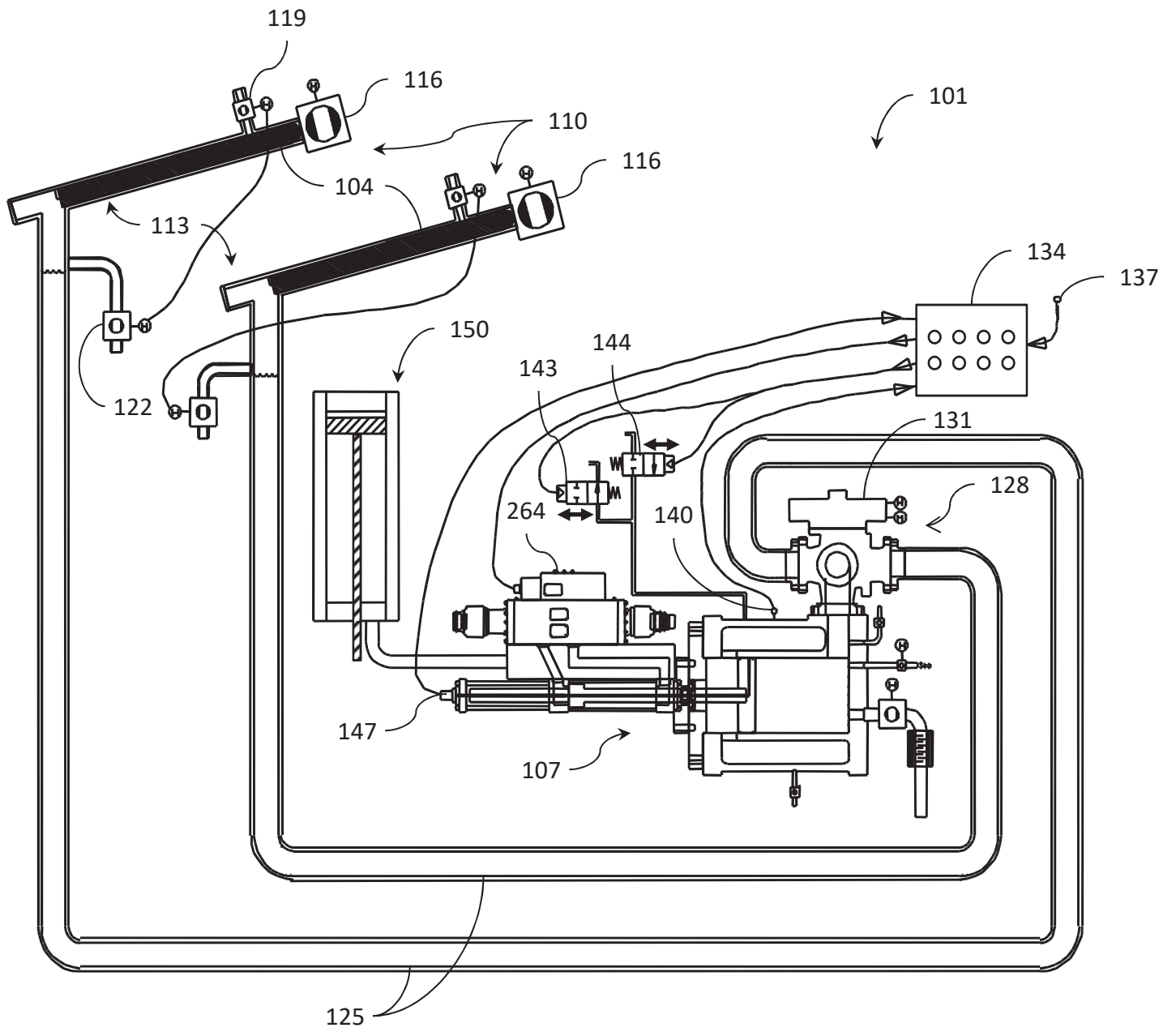


FIG. 1

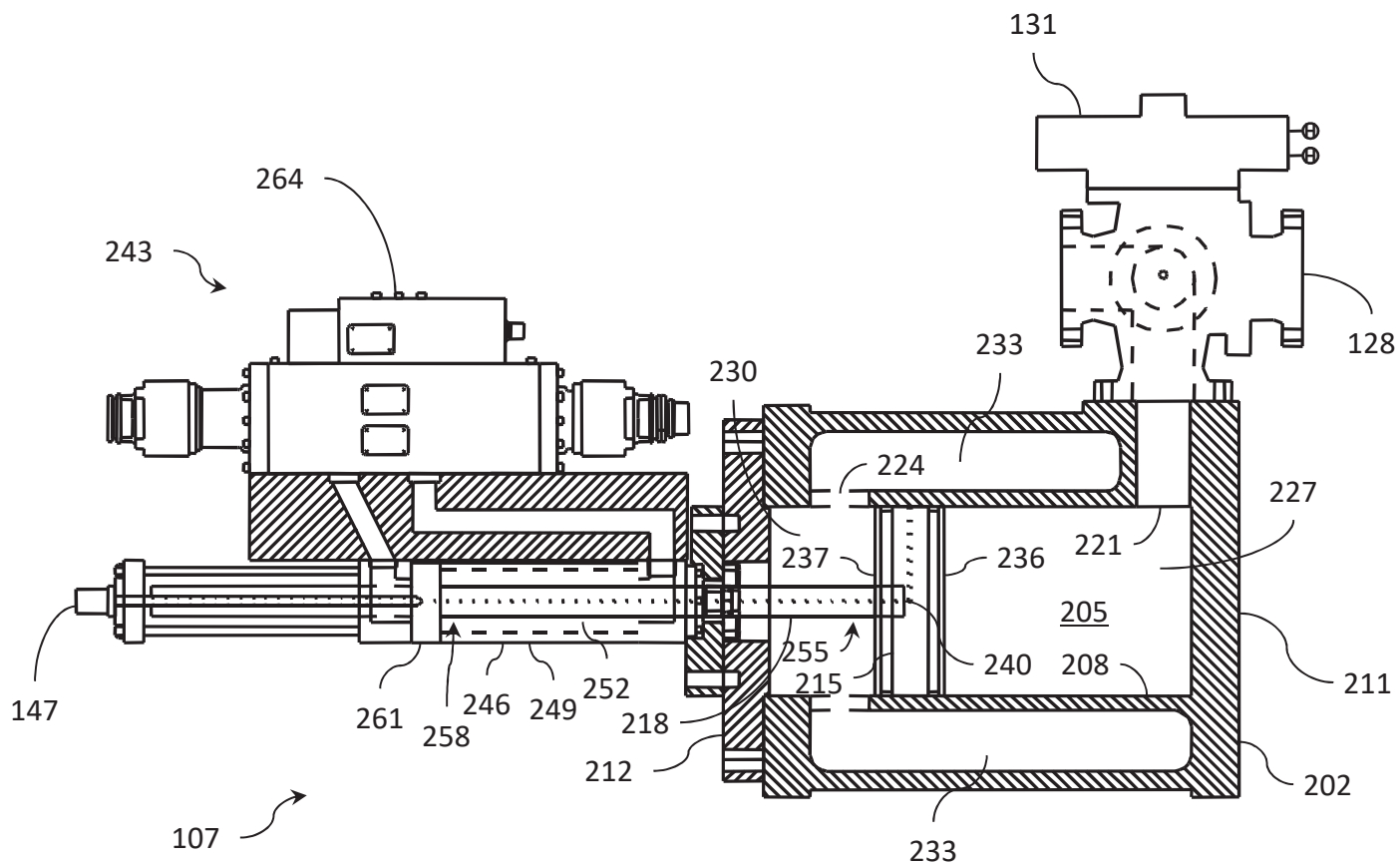


FIG. 2

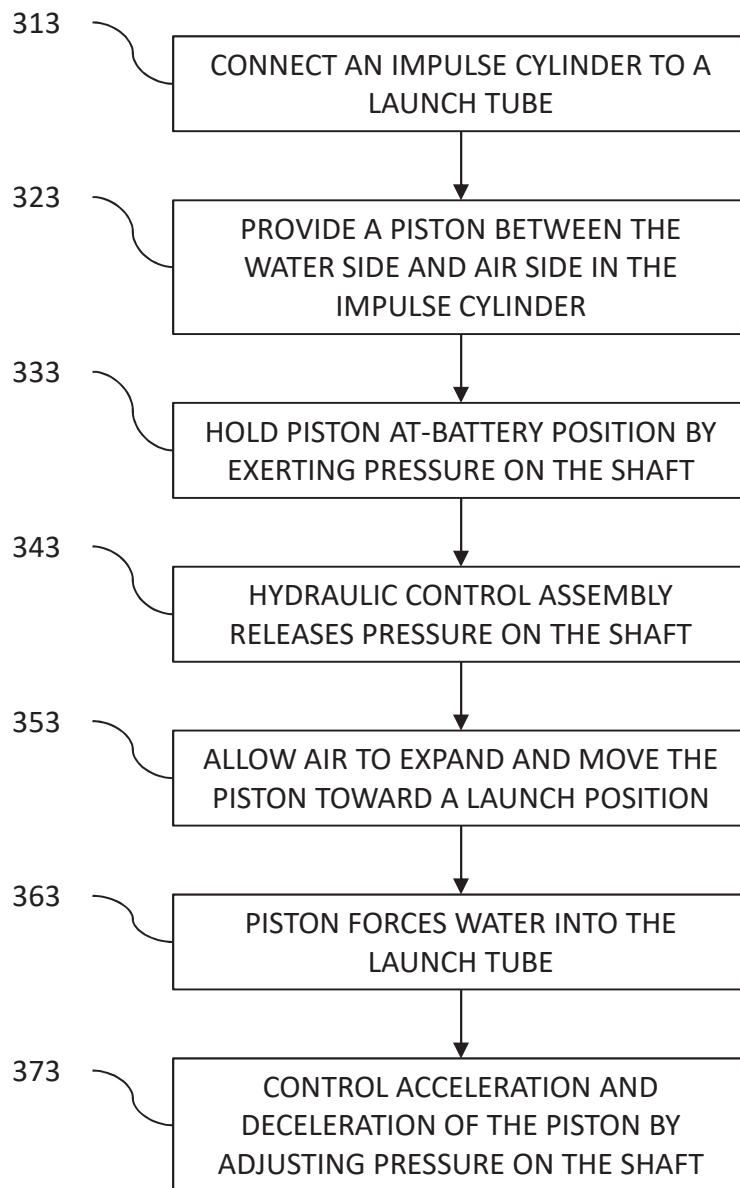


FIG. 3