

ERDC/CERL TR-23-8

Construction Engineering  
Research Laboratory



**US Army Corps  
of Engineers®**  
Engineer Research and  
Development Center



## **Historic Architecture and Landscape Inventory for Gordon Lakes Golf Club, Fort Gordon, Georgia**

August S. Fuelberth, Madison L. Story, Adam D. Smith, and  
Megan W. Tooker

April 2023



**The US Army Engineer Research and Development Center (ERDC)** solves the nation's toughest engineering and environmental challenges. ERDC develops innovative solutions in civil and military engineering, geospatial sciences, water resources, and environmental sciences for the Army, the Department of Defense, civilian agencies, and our nation's public good. Find out more at [www.erdclibrary.on.worldcat.org/discovery](http://www.erdclibrary.on.worldcat.org/discovery).

To search for other technical reports published by ERDC, visit the ERDC online library at <http://www.erdclibrary.on.worldcat.org/discovery>.

# **Historic Architecture and Landscape Inventory for Gordon Lakes Golf Club, Fort Gordon, Georgia**

August S. Fuelberth, Madison L. Story, Adam D. Smith, and Megan W. Tooker

*US Army Engineer Research and Development Center (ERDC)  
Construction Engineering Research Laboratory (CERL)  
2902 Newmark Drive  
Champaign, IL 61824*

Final Technical Report (TR)

DISTRIBUTION STATEMENT A. Approved for public release. Distribution is unlimited.

Prepared for Cultural Resources Program  
Directorate of Public Works  
Fort Gordon, GA 30905

Under Project Number 450904, "NRHP Evaluation of Recreation Facilities at Fort  
Gordon," MIPR 0011540302

## Abstract

The US Congress codified the National Historic Preservation Act of 1966 (NHPA), through establishing the National Register of Historic Places (NRHP). The NHPA requires federal agencies to address their cultural resources, which are defined as any prehistoric or historic district, site, building, structure, or object. Section 110 of the NHPA requires federal agencies to inventory and evaluate their cultural resources, and Section 106 requires them to determine the effect of federal undertakings on those potentially eligible for the NRHP.

Fort Gordon is located in northeast Georgia, directly west of Augusta-Richmond. It was first established as Camp Gordon during WWII for infantry and armor training. It has been known as Fort Gordon since 1956.

This report provides historic context and recommends eligibility determinations for 24 buildings, structures, and landscapes associated with the Gordon Lakes Golf Club constructed between 1975 and 2009. The report recommends two Real Property landscapes (the Golf Driving Range and 18-Hole Golf Course including Gordon Lake) and one structure (Gordon Lake Dam) are eligible for the NRHP. The other 21 buildings and structures are recommended Not Eligible. Consulting with the Georgia State Historic Preservation Officer, this work fulfills Section 110 requirements for these buildings, structures, and landscapes.

**DISCLAIMER:** The contents of this report are not to be used for advertising, publication, or promotional purposes. Citation of trade names does not constitute an official endorsement or approval of the use of such commercial products. All product names and trademarks cited are the property of their respective owners. The findings of this report are not to be construed as an official Department of the Army position unless so designated by other authorized documents.

**DESTROY THIS REPORT WHEN NO LONGER NEEDED. DO NOT RETURN IT TO THE ORIGINATOR.**

# Contents

<b>Abstract</b> .....	<b>ii</b>
<b>Figures and Tables</b> .....	<b>v</b>
<b>Preface</b> .....	<b>ix</b>
<b>1 Introduction</b> .....	<b>1</b>
1.1 Background.....	1
1.2 Objectives.....	2
1.3 Researchers.....	5
1.4 Site visits.....	5
1.5 Archival repositories.....	5
1.6 Approach.....	5
<b>2 Historic Context</b> .....	<b>7</b>
2.1 Robert Trent Jones and landscape architecture.....	7
2.2 Gordon Lakes Golf Club.....	11
<b>3 Determination of Significance</b> .....	<b>23</b>
3.1 Categories of historic properties.....	23
3.2 NRHP definitions and criteria.....	24
3.3 Final recommendations of significance.....	25
3.4 1965 through 1976.....	26
3.4.1 For Criterion A—Event.....	26
3.4.2 For Criterion B—Person.....	26
3.4.3 For Criterion C—Design/Construction.....	27
3.4.4 For Criterion D—History.....	27
3.5 Historic district.....	27
3.6 National, state, or local significance.....	27
<b>4 Current Conditions</b> .....	<b>28</b>
4.1 GL018, 18-hole golf course.....	29
4.2 GL019, golf driving range.....	36
4.3 G0021 (formerly Building 538) Water Supply Building.....	39
4.4 G0871, Gordon Lake Dam.....	40
4.5 GL001, Gordon Lake Golf Course footbridge.....	41
4.6 GL009, Gordon Lake Golf Course footbridge.....	42
4.7 Building 531, HazMat Storage.....	42
4.8 Building 532, HazMat Storage.....	42
4.9 Building 533, Golf Course Maintenance.....	43
4.10 Building 535, Bathroom/Showers.....	43
4.11 Building 536, REC (Recreation) Support Building/Shed/Start Shack.....	43
4.12 Building 537, Golf Course Clubhouse.....	44

4.13	Building 539, Cart Barn.....	48
4.14	Building 541, Range Ball Facility.....	48
4.15	Building 542, Water Treatment/Chlorination Building.....	49
4.16	Building 546, Water Treatment/Chlorination Building.....	49
4.17	Building 544, Pavilion.....	49
4.18	Building 545, Bathroom/Showers.....	51
4.19	Building 546, Bathroom/Showers.....	51
4.20	ISLD7, Bridge at Gold Course.....	51
4.21	LAKE3, Golf Course Pedestrian Bridge.....	52
4.22	LAKE7, Golf Course Bridge.....	53
4.23	PINE0, 9-hole Golf Course.....	53
4.24	Bridge between LAKE3 and LAKE7 .....	53
<b>5</b>	<b>Seven Aspects of Integrity.....</b>	<b>54</b>
<b>6</b>	<b>Final Recommendations and Conclusion.....</b>	<b>56</b>
6.1	Final recommendations.....	56
6.2	Property boundary .....	58
6.3	Character-defining features .....	59
6.4	Conclusion.....	59
	<b>Bibliography.....</b>	<b>60</b>
	<b>Abbreviations.....</b>	<b>62</b>
	<b>Report Documentation Page (SF 298).....</b>	<b>63</b>

# Figures and Tables

## Figures

1. Boundary outline and location of Fort Gordon in eastern Georgia. (Image from US Army Engineer Research and Development Center-Construction Engineering Research Laboratory [ERDC-CERL]. Public Domain.) .....	2
2. Locations of the evaluated buildings, structures, and landscapes within the Gordon Lakes Golf Club in 2022. (Map data: Google, 2021.) .....	3
3. Detail of preliminary site plan for the Gordon Lakes Golf Clubhouse (prior to Robert Trent Jones' involvement) designed by Kuhlke, Wade, and Gauger, 1965. (Fort Gordon Directorate of Public Works [DPW]. Public Domain.) .....	12
4. Clubhouse (1965 scheme) floorplan at Gordon Lakes Golf Club designed by Kuhlke, Wade, and Gauger. (Fort Gordon DPW. Public Domain.) .....	12
5. Clubhouse (1974 final) floorplan at Gordon Lakes Golf Club designed by Kuhlke and Wade. (Fort Gordon DPW. Public Domain.).....	13
6. Clubhouse (1974 final) south elevation at Gordon Lakes Golf Club designed by Kuhlke and Wade. (Fort Gordon DPW. Public Domain.).....	13
7. Site plan and layout for the Gordon Lakes Golf Course by Robert Trent Jones, Inc. and Kuhlke and Wade and Associates, traced July 1981. (Fort Gordon DPW. Public Domain.).....	14
8. Site plan for Gordon Lakes golf course showing full course layout, no date. (Fort Gordon DPW. Public Domain.) .....	15
9. Using Gordon Lake as a water hazard at Gordon Lakes is a typical Jones design element. (ERDC-CERL, 2020. Public domain.) .....	15
10. Green located on an island at Gordon Lakes Golf Club is another signature Jones design. (ERDC-CERL, 2020. Public domain.) .....	16
11. "Undulating" greens at Gordon Lakes are another typical Jones design element. (ERDC-CERL, 2020. Public domain.) .....	16
12. Robert Trent Jones's love of nature is exemplified through trees located on the edge of the greens at Gordon Lakes. (ERDC-CERL, 2020. Public domain.).....	17
13. Robert Trent Jones's one-of-a-kind sightlines at Gordon Lakes Golf Club. (ERDC-CERL, 2020. Public domain.).....	17
14. Site plan for Gordon Lake Dam, 1973. (Fort Gordon DPW. Public Domain.).....	18
15. Looking south at a section of Gordon Lake dam, 1973. (Fort Gordon DPW. Public Domain.) .....	18
16. Looking north at Gordon Lake dam. (ERDC-CERL, 2020. Public domain.) .....	19
17. A footbridge at Gordon Lakes Golf Club added to the landscape in 2009. (ERDC-CERL, 2020. Public domain.).....	20
18. Range ball facility, constructed in 2010, at Gordon Lakes Golf Club. (ERDC-CERL, 2020. Public domain.).....	20
19. Recreation support building/shed/starter shack, constructed in 2009, at Gordon Lakes Golf Club. (ERDC-CERL, 2020. Public domain.).....	21
20. Pavilion, constructed 2007, at Gordon Lakes Golf Club. (ERDC-CERL, 2020. Public	

domain.).....	21
21. Current course layout at Gordon Lakes Golf Club, no date. (Fort Gordon DPW. Public Domain.).....	22
22. Clubhouse constructed in 1975 and designed by Kuhlke and Wade at Gordon Lakes Golf Club. (ERDC-CERL, 2020. Public domain.).....	22
23. Location of the evaluated buildings within the Gordon Lakes Golf Course in 2022. (Map data: Google, 2021.).....	28
24. View east down the entrance road into the Gordon Lakes Golf Course complex. (ERDC-CERL, 2020. Public domain.).....	29
25. Entrance sign to Gordon Lakes Golf Course. (ERDC-CERL, 2020. Public domain.).....	30
26. Entrance gate into Gordon Lakes Golf Course. (ERDC-CERL, 2020. Public domain.).....	30
27. Looking east from the Clubhouse to the entrance to greens. (ERDC-CERL, 2020. Public domain.).....	31
28. Looking southeast at the entrance to the greens. (ERDC-CERL, 2020. Public domain.)....	31
29. Looking southeast at the entrance signs for the greens. (ERDC-CERL, 2020. Public domain.).....	32
30. Looking southeast at the undulating landscape of Robert Trent Jones’s landscape for the greens. (ERDC-CERL, 2020. Public domain.).....	32
31. Trees utilized by Robert Trent Jones’s landscape for bordering the greens. (ERDC-CERL, 2020. Public domain.).....	33
32. Looking towards a sand pit in Robert Trent Jones’s landscape. (ERDC-CERL, 2020. Public domain.).....	33
33. Looking through the pines at a green in Robert Trent Jones’s landscape. (ERDC-CERL, 2020. Public domain.).....	34
34. Looking southeast at the undulating landscape of Robert Trent Jones’s design with Gordon Lake in the distance. (ERDC-CERL, 2020. Public domain.).....	34
35. Looking southeast at Gordon Lake and Robert Trent Jones’s landscape. (ERDC-CERL, 2020. Public domain.).....	35
36. Looking north across Gordon Lake to the golf course and the undulating landscape of Robert Trent Jones’s design. (ERDC-CERL, 2020. Public domain.).....	35
37. Hole 6 on an island in Gordon Lake as part of the landscape of Robert Trent Jones’s design. (ERDC-CERL, 2020. Public domain.).....	36
38. Looking northeast along the path on the southeast side of GLO19 (Driving Range) with Building 536 in the foreground and Building 541 in the distance. (ERDC-CERL, 2020. Public domain.).....	36
39. Looking north at Building 541 (Range Ball Facility) and golf cart parking area. (ERDC-CERL, 2020. Public domain.).....	37
40. Looking northwest from Building 541 (Range Ball Facility) across the driving range (GLO19). (ERDC-CERL, 2020. Public domain.).....	37
41. Looking southwest with Building 541 (Range Ball Facility) on the left across the driving range (GLO19). (ERDC-CERL, 2020. Public domain.).....	38
42. Looking north across vinyl fence along the golf cart path to the 9-hole golf course (constructed in 2000). (ERDC-CERL, 2020. Public domain.).....	38
43. Looking southwest along the golf cart path to Building 537 (Clubhouse). (ERDC-	

CERL, 2020. Public domain.).....	39
44. View of G0021, which is the water intake building for the golf course, constructed in 2002. (ERDC-CERL, 2020. Public domain.).....	39
45. Looking north along the top of the Gordon Lake Dam. (ERDC-CERL, 2020. Public domain.) .....	40
46. Looking north along the spillway on Gordon Lake Dam. (ERDC-CERL, 2020. Public domain.).....	40
47. Detail of Gordon Lake Dam. (ERDC-CERL, 2020. Public domain.).....	41
48. View of GL001 (pedestrian bridge) over Spirt Creek that dates to 1975. (ERDC-CERL, 2015. Public domain.) .....	41
49. View of GL009 (pedestrian bridge) that dates to 1976. (ERDC-CERL, 2020. Public domain.).....	42
50. View of Building 535 (Bathroom/Showers), constructed in 2007. (ERDC-CERL, 2020. Public domain.) .....	43
51. Looking west at Building 536 (REC Support Building), constructed in 2009. (ERDC-CERL, 2020. Public domain.).....	44
52. Northwest side of Building 537 (Clubhouse), constructed in 1975 and modified in the 2000s (ERDC-CERL, 2020. Public domain.).....	45
53. Close-up of the front entrance to Building 537 (Clubhouse), constructed in 1975 and modified in the 2000s. (ERDC-CERL, 2020. Public domain.).....	45
54. Looking east at Building 537 (Clubhouse), constructed in 1975 and modified in the 2000s. (ERDC-CERL, 2020. Public domain.).....	46
55. Southeast side of Building 537 (Clubhouse), constructed in 1975 and modified in the 2000s. (ERDC-CERL, 2020. Public domain.).....	46
56. Looking northwest to Building 537 (Clubhouse), constructed in 1975 and modified in the 2000s. (ERDC-CERL, 2020. Public domain.).....	47
57. Looking southeast from Building 537 (Clubhouse), out to the practice green. (ERDC-CERL, 2020. Public domain.).....	47
58. Looking southwest at Building 539 (Cart Barn), constructed in 2010. (ERDC-CERL, 2020. Public domain.).....	48
59. Looking northwest at Building 541 (Range Ball Facility). (ERDC-CERL, 2020. Public domain.) .....	49
60. Looking northwest at Building 544 (Pavilion). (ERDC-CERL, 2020. Public domain.) .....	50
61. Looking south at Building 544 (Pavilion). (ERDC-CERL, 2020. Public domain.).....	50
62. View of Building 545 (Bathroom/Showers), constructed in 2007. (ERDC-CERL, 2020. Public domain.).....	51
63. View of ISLD7, which is a glue lam and timber decked bridge erected in 2009. (ERDC-CERL, 2020. Public domain.).....	52
64. View of LAKE3, which is a glue lam and timber decked bridge erected in 2009. (ERDC-CERL, 2020. Public domain.).....	52
65. View of LAKE7, which is a glue lam and timber decked bridge erected in 2009. (ERDC-CERL, 2020. Public domain.).....	53
66. Boundary of the Gordon Lakes historic landscape site. (Map data: Google, 2021.) .....	58

**Tables**

1. List of buildings, structures, and landscapes associated with the Gordon Lakes Golf Club to be evaluated (Directorate of Public Works [DPW], Fort Gordon). ..... 4
2. List of buildings, structures, and landscapes constructed between 1975 and 1976, that were evaluated at the Gordon Lakes Golf Course (Fort Gordon DPW). ..... 26
3. List of buildings constructed from 1975 to 1976 and determination of their NRHP eligibility. .... 58

## Preface

This study was conducted for the Cultural Resources Program, Environmental Division, Directorate of Public Works (DPW) at Fort Gordon, Georgia, under Project 450904, MIPR 0011540302, “NRHP Evaluation of Recreation.” The technical monitor was Renee Lewis (Cultural Resources Manager, DPW).

The work was performed by the Training Lands & Heritage Branch of the Operational Science & Engineering Division, Engineer Research and Development Center, Construction Engineering Research Laboratory (ERDC-CERL). At the time of publication, Ms. Angela Rhodes was chief, Training Lands & Heritage Branch; Dr. George Calfas was chief, Operational Science & Engineering Division; and Mr. Jim Allen was the Technical Director for Operational Science & Engineering Division. The deputy director of ERDC-CERL was Ms. Michelle Hanson, and the director was Dr. Andrew Nelson.

COL Christian Patterson was commander of ERDC, and Dr. David W. Pittman was the director.

This page intentionally left blank.

# 1 Introduction

## 1.1 Background

The US Congress codified the National Historic Preservation Act of 1966 (NHPA), the Nation's most effective cultural resources legislation to date, to provide guidelines and requirements for preserving tangible elements of the Nation's past. This preservation was done primarily through creation of the National Register of Historic Places (NRHP). Contained within this piece of legislation are requirements for Federal agencies to address their cultural resources, defined as any prehistoric or historic district, site, building, structure, or object (NHPA of 1966, Sections 110 and 106). Section 110 requires Federal agencies to inventory and evaluate their cultural resources. Section 106 requires the determination of effect of Federal undertakings on properties deemed eligible or potentially eligible for the NRHP.

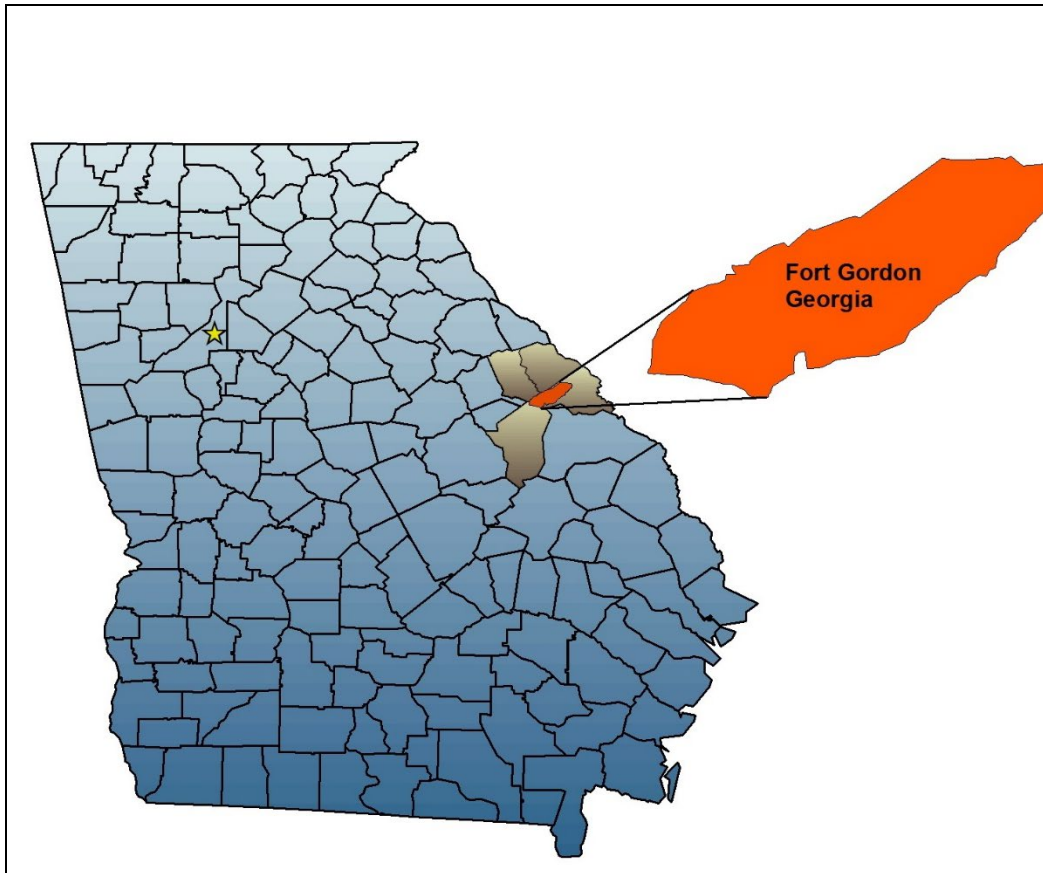
Fort Gordon is located in northeast Georgia, on the state's border with South Carolina and just southwest of Augusta (Figure 1). It is located in parts of Augusta-Richmond, Jefferson, McDuffie, and Columbia counties and is 139 miles southeast of Atlanta. It was first established as Camp Gordon during World War II for infantry and armor training. In September 1948, the Army established both the Signal Corps Training Center and the Military Police School at Camp Gordon. The following January, the Engineer Aviation Unit Training Center opened, though it only remained at Camp Gordon for one year. In addition to serving as a combat training center and the Army's site for Military Government Training during the Korean War, several more schools opened at Camp Gordon during the 1950s, including the Basic Replacement Training Center and the Advanced Leader's School. In accordance with its growing role in the US Army, Camp Gordon was redesignated as Fort Gordon on 21 March 1956. During the Vietnam War, infantry, military police, and signal soldiers trained at Fort Gordon, and the installation has contributed to play a significant role in national defense since the end of the Cold War.<sup>1</sup> In June 1962, all activities of the Signal Corps Training Center were reorganized under the US Army's Southeastern Signal School. Designating the installation the US Army

---

<sup>1</sup> US Army, "History," US Army Fort Gordon, accessed Aug. 9, 2022, <https://home.army.mil/gordon/index.php/about/history>.

Signal Center and Fort Gordon, the Army consolidated all communications training at Fort Gordon on 1 October 1974.

Figure 1. Boundary outline and location of Fort Gordon in eastern Georgia. (Image from US Army Engineer Research and Development Center-Construction Engineering Research Laboratory [ERDC-CERL]. Public Domain.)



## 1.2 Objectives

The objective of this effort was to create a historic context regarding the Gordon Lakes Golf Club, portions of which date to 1975 and associated buildings, structures, and landscapes, and to assess the integrity of 14 buildings, 7 structures, and 3 landscapes at Fort Gordon, Georgia, for listing on the NRHP. The 14 buildings, 7 structures, and 3 landscapes are located in and around the golf course at Fort Gordon (Figure 2). This survey satisfies Section 110 of the NHPA of 1966, and it was used to make recommendations regarding the eligibility of these 14 buildings, 7 structures, and 3 landscapes for inclusion on the NRHP.

Figure 2. Locations of the evaluated buildings, structures, and landscapes within the Gordon Lakes Golf Club in 2022. (Map data: Google, 2021.)



Analyses were performed on the 14 buildings, 7 structures, and 3 landscapes (Table 1), including basic history and assessment of current conditions. To qualify as eligible for listing on the NRHP, a property must meet at least one of the NRHP Criteria for Evaluation as established by the National Park Service (NPS), must be significantly associated with an important historic context, and must retain sufficient integrity to convey its significance.<sup>2</sup>

**Table 1. List of buildings, structures, and landscapes associated with the Gordon Lakes Golf Club to be evaluated (Directorate of Public Works [DPW], Fort Gordon).**

Building	Building Name	Acquisition Date
531	HazMat Storage	1995
532	HazMat Storage	1995
533	Golf Course Maintenance	1999
535	Bathroom/Showers	2007
536	REC Support/Shed/Starter Shack	2009
537	Clubhouse	1975
539	Cart Barn	2010
541	Range Ball Facility	2010
542	Water Treatment/Chlorination Building	1989
543	Water Treatment/Chlorination Building	1989
544	Pavilion	2007
545	Bathroom/Showers	2007
546	Bathroom/Showers	2007
GL018	18-hole Golf Course	1975
GL019	Golf Driving Range	1975
G0021	Water Supply Building (old 538)	2002
G0871	Gordon Lake Dam	1975
GL001	Gordon Lake Golf Course Footbridge	1976
GL009	Gordon Lake Golf Course Footbridge	1976
ISLD7	Bridge at Gold Course	2009
LAKE3	Golf Course Pedestrian Bridge	2009
LAKE7	Golf Course Bridge	2009
PINE0	9-hole golf course	2002
No #	Bridge between LAKE3 and LAKE7	2009

<sup>2</sup> NPS (National Park Service), *National Register Bulletin #15: How to Apply the National Register Criteria for Evaluation* (Washington, DC: US Department of the Interior, National Park Service [DOI-NPS], 1997).

This final report's main text includes the Gordon Lakes Golf Club historic context and determinations of eligibility for each of the 14 buildings, 7 structures, and 3 landscapes.

### **1.3 Researchers**

This project was conducted by the US Army Corps of Engineers (USACE), Engineering Research Development Center, Construction and Engineering Research Laboratory (ERDC-CERL) in Champaign, Illinois. The research team included Adam D. Smith, Master of Architecture with 25 years of experience in architectural history as architectural historian; Megan W. Tooker, Master of Landscape Architecture with 25 years of experience in landscape architectural history as project manager and landscape historian; Madison L. Story, Master of Science in Historic Preservation, preservation professional with 3 years of experience; and August S. Fuelberth, student intern (architecture), with 3 years of experience.

### **1.4 Site visits**

ERDC-CERL personnel made one trip to Fort Gordon in December 2020.

### **1.5 Archival repositories**

ERDC-CERL researchers conducted a review of books, archival repositories, and online resources related to the Gordon Lakes Golf Course. The following places were contacted or searched:

- NRHP listings and nomination forms (online)<sup>3</sup>
- Historic drawings, maps, photographs, and information were provided by the Cultural Resources Office of the Directorate of Public Works, the Historian's Office, and the Real Property Office's database at Fort Gordon
- National Archives and Records Administration (NARA), College Park, Maryland (NARA 111-SC, NARA 111-SCA, and 111-CCS)

### **1.6 Approach**

After initial research was completed, the team analyzed the gathered information. Archival information and field information were integrated throughout the course of the project. The information available was

---

<sup>3</sup> To access the forms go to <https://catalog.archives.gov/search-within/20812721>.

contained in text documents, photographs, and historic maps. Using archival sources, the research team extracted relevant historical information. The material was then combined to tell the story in both text and images.

Using information from the historic context the overarching historic integrity was evaluated per the NRHP's definition. A cultural resource can retain or lose its historic integrity, meaning that it either does or does not convey its historic significance. From this evaluation process, a recommendation of eligibility for listing on the NRHP was made. The evaluation followed guidelines published by the National Park Service in *National Register Bulletin #15, How to Apply the National Register Criteria for Evaluation*;<sup>4</sup> *National Register Bulletin #16A, How to Complete the National Register Registration Form*;<sup>5</sup> the *National Register Bulletin, How to Prepare National Historic Landmark Nominations*;<sup>6</sup> and *The Secretary of the Interior's Standards for the Treatment of Historic Properties with Guidelines for the Treatment of Cultural Landscapes*.<sup>7</sup>

---

<sup>4</sup> NPS, *National Register Bulletin #15: How to Apply the National Register Criteria for Evaluation*.

<sup>5</sup> NPS, *National Register Bulletin #16A: How to Complete the National Register Registration Form* (Washington, DC: Department of the Interior [DOI]-NPS, 1997).

<sup>6</sup> NPS, *National Register Bulletin: How to Prepare National Historic Landmark Nominations* (Washington, DC: DOI-NPS, 1999).

<sup>7</sup> Weeks, K. D. and A. E. Grimmer. *The Secretary of the Interior's Standards for the Treatment of Historic Properties with Guidelines for Preserving, Rehabilitating, Restoring & Reconstructing Historic Buildings* [rev. of 1995 document by A. E. Grimmer] (Washington, DC: DOI-NPS, Technical Preservation Services, 2017). <https://www.nps.gov/tps/standards/treatment-guidelines-2017.pdf>.

## 2 Historic Context

### 2.1 Robert Trent Jones and landscape architecture

Robert Trent Jones, born in 1906, was a golf course architect who designed hundreds of golf courses throughout the United States and the world. Within the United States and thirty-five other countries, his one-of-a-kind designs challenged golfers of all ages and skill levels. At a young age, Robert Trent Jones caddied at a golf course where professional golfer Walter Hagen served as the club professional. After this experience, Jones knew that he wanted to get involved with the golf industry in some way. Early in his career, he worked for a golf course in a variety of positions, and he consequently became very successful at the game. After gaining admission to Cornell University, he began to study design and took courses that related to landscape design.<sup>8</sup>

Jones' landscape design career, focusing on golf course design and redesign, officially began in 1931. Throughout his career, he designed golf courses that were featured in significant national and international golf championships. Jones was very well-known—President Eisenhower hired Jones to put a putting green near the White House.<sup>9</sup> Other significant courses designed by Jones include the following:

- *Robert Trent Jones Golf Club—1991 (Gainesville, Virginia)*: This club is located near Washington, DC, and sits on the Lake Manassas Reservoir. Jones, who based designs off of their site, noted that “the terrain [was] aesthetically perfect” upon arrival to the site of what would become the Robert Trent Jones Golf Club. The site is a 65,000 ft<sup>2</sup> mansion, constructed in the Georgian style.<sup>10</sup> This structure is clad with red brick with white columns near the clubhouse portion of the building. The course includes a lake hazard at the par-three eleventh hole. This requires golfers to hit the ball over open water. Four President's Cups were played at this course in 1994, 1996, 2000, and 2005.<sup>11</sup>

---

<sup>8</sup> Anderson, D. “Robert Trent Jones Sr., Golf Course Architect Who Made Mark on U.S. Open, Is Dead at 93.” *The New York Times*, June 16, 2000.

<sup>9</sup> Anderson, D., June 16, 2000.

<sup>10</sup> For a full list of the spelled-out forms of the units of measure used in this document and their conversions, please refer to US Government Publishing Office Style Manual, 31st ed. (Washington, DC: US Government Publishing Office, 2016), 248–52 and 345–47, <https://www.govinfo.gov/content/pkg/GPO-STYLEMANUAL-2016/pdf/GPO-STYLEMANUAL-2016.pdf>.

<sup>11</sup> Robert Trent Jones Golf Club. “Our Story.” History.

- *Old Warson Country Club—April 15, 1954 (Ladue, Missouri)*: This club has hosted many notable tournaments since its establishment in the mid-1950s, including: the Western Amateur (1957), the Trans-Mississippi Amateur (1962), the Ryder Cup (1971), the U.S. Mid-Amateur Golf Championship (1999), the United States Women’s Amateur Golf Championship (2009), and the United States Men’s Amateur Golf Championship (2016). These notable events, along with the famous men and women who competed therein, contributes to the significance of this course.<sup>12</sup>
- *Spyglass Hill Golf Course—March 11, 1966 (Pebble Beach, California)*: Originally named the Pebble Beach Pines Golf Club, this course (later renamed Spyglass Hill Golf Course) is now part of the Pebble Beach Golf Company. The course has been in a rotation of courses which host the AT&T Pro-Am (Professional Golfers’ Association of America [PGA] Tour) and it is ranked highly by *Golf Digest*. Each hole of the course has a unique name based on places and characters in the famous Robert Lewis Stevenson novel “Treasure Island.” Spyglass Hill Golf Course is known to have beautiful views, including views of the Pacific Ocean and the Del Monte Forest.<sup>13</sup>
- *The Dunes Golf and Beach Club—1947 (Myrtle Beach, South Carolina)*: The Dunes Golf and Beach Club is known for its “timeless design” by Robert Trent Jones. Many major magazines rank this course as “a Top 100 Golf Course.” Many championships and PGA tours have taken place at The Dunes, including PGA tours and national, state, collegiate, women’s, and men’s tournaments for all skill levels.<sup>14</sup>
- *Firestone Country Club—1929 (redesigned 1960) (Akron, Ohio)*: Originally designed by Bert Way, Robert Trent Jones redesigned the course in 1960 and added his signature touches, including bunkers and ponds. The course is known as “the monster” because of the challenges that golfers face along the way, such as the height of greens, hidden bunkers, and long, narrow profiles.<sup>15</sup>
- *Hazeltine National Golf Club—1962 (Chaska, Minnesota)*: Hazeltine National Golf Club was designed by Robert Trent Jones, who was hired by a former president of the United States Golf Association, Totten P. Heffelfinger.<sup>16</sup>

---

<sup>12</sup> Old Warson Country Club. “History of Old Warson Country Club.”

<sup>13</sup> Pebble Beach Company. “History.” Spyglass Hill Golf Course.

<sup>14</sup> The Dunes Golf and Beach Club. “Welcome to the Dunes Golf and Beach Club.” About Us.

<sup>15</sup> Invited. A 68 Year Professional Golf Legacy.” Firestone Country Club.

<sup>16</sup> Hazeltine National Golf Club. “History of Hazeltine.” Hazeltine National.

Robert Trent Jones also designed and redesigned golf courses listed on the NRHP; notably, some courses were included on the NRHP prior to his contribution to their design, and he was chosen to redesign or otherwise improve these historically significant landscapes. NRHP-listed courses that Jones designed or otherwise contributed to include the following:

- *Baltusrol Golf Club—1895 (Springfield, New Jersey)*: The Baltusrol Golf Club, originally designed by notable landscape architect A.W. Tillinghast, was the first golf course to host the US Open. The course was added to the National Register of Historic Places in 2005 and was also listed as a National Historic Landmark in 2014; both accolades are largely accredited to A.W. Tillinghast's designs and association with the course. Robert Trent Jones, however, contributed to the design of Baltusrol in the 1940s, early in his career. Hired to lengthen the course, his design goals included improving the course, as well as restoring Tillinghast's original design intentions, which had vanished over time. Robert Trent Jones' son, Rees Jones (also a golf course architect) also worked on this course.<sup>17</sup>
- *Greens at North Hills (Sylvan Hills Country Club Golf Course)—1926 (Sherwood, Arkansas)*: Originally named Sylvan Hills Country Club but now known as Greens at North Hills was a very popular club until the Great Depression. The course shut down during the Great Depression, and some of the land was instead used as pasture for dairy cattle and for hunting. Following the Great Depression, the course re-opened; however, it continued to struggle financially through World War II. To generate funds, the club operated illegal slot machines and required a very large initial membership fee. In 1977, Robert Trent Jones was hired to redesign the 1920s golf course that could no longer sustain the activities of the members. With an \$800,000 budget, Jones made drastic changes to the course. In 2007, the club shut down again because of financial reasons, though it was later purchased and renamed by the City of Sherwood. This is the only course Jones designed in Arkansas.<sup>18</sup>

---

<sup>17</sup> Jenkins, R. "The Rees Jones Era." Baltusrol Golf Club.

<sup>18</sup> NRHP (National Register of Historic Places). 2010. *Sylvan Hills Country Club Golf Course*. NR 8-6-10. Washington, DC: DOI-NPS.

- *Quaker Ridge Golf Club—1916 (Scarsdale, New York)*: This course has a long history of hosting major gold competitions including the Metropolitan Open and the Curtis Cup (US Golf Association [USGA] Match). Many famous golfers have competed at this course, which, like the Greens at North Hills, was originally designed by A.W. Tillinghast. Those who compete and are involved are very proud of what this course has to offer. The course looks nothing like it did when it first opened. There are stories regarding George Washington in the Revolutionary War and a large oak tree that he rested under. It is said that this very tree is near the tenth hole of the course. It was not until 1965 that Robert Trent Jones' involvement began. Jones updated portions of the course, including the addition of new tees and new bunkers. He is known for protecting the integrity of the golf courses he works on—retaining the designs of the original architect while improving them with his strategic and creative planning .<sup>19</sup>

In both the golf courses he designed in full and those he re-designed, Robert Trent Jones sought to instill the virtues of beauty, challenge, and flexibility and to make his designs “grow” out of the land. His quote “the sun never sets on a Robert Trent Jones golf course” perfectly encapsulates this goal, in which the sun and surrounding landscape played a key role in his design process. Consequently, he produced unique designs consisting of large bunkers, ponds, creeks, lakes (Jones' favorite hazard), and undulating greens, which are sometimes described as huge or “sweeping.” Since *challenge* is one of Jones' virtues, he was also sure to incorporate very elongated “runway” tees, allowing his courses to accommodate golfers of all skill levels. Throughout his design process, he wanted to use the land as it was in its natural state and not make any vast changes. This was both part of his design philosophy and a signifier of keen financial thinking, as he began designing at the end of the Great Depression. Jones was also very knowledgeable in agriculture and agronomy, so while surveying potential golf course sites, he would experiment with various types of grasses to see which type would best suit the course. With knowledge of the sport, agriculture, and architecture, Jones was able to both design and re-design golf courses that continue to be in use today.<sup>20</sup>

---

<sup>19</sup> Quaker Ridge Golf Club. “Our History.” Quaker Ridge Golf Club.

<sup>20</sup> Hansen, James. “Robert Trent Jones.” *Golf Course Architecture: The Global Journalism of Golf Design and Development*, May 21, 2009.  
<https://golfcoursearchitecture.net/content/Robert-Trent-Jones>.

The success of Robert Trent Jones' designs is based upon not only through the courses' long history of use, but also through the numerous accolades and awards he earned throughout his career. These include the Golden Plate Award of the American Academy of Achievement (1972), the Old Tom Morris Award of the Golf Course Superintendents Association of America (1987), and initiation into the World Golf Hall of Fame (1987). He also passed his love for the field to his two sons, who also became golf course architects. Jones passed away in 2000, one year after his final design was completed.<sup>21</sup>

## 2.2 Gordon Lakes Golf Club

Potentially owing to year-round warm weather, golf is popular in the southern part of the United States. Therefore, there are many golf courses in the south. The course is located on US Army Fort Gordon near Augusta, Georgia. Active and retired military personnel, as well as civilians, are welcome to utilize the course.<sup>22</sup> The Gordon Lakes Golf Course is considered "one of the finest."<sup>23</sup>

The design for the Gordon Lakes Golf Club by Kuhlke, Wade and Gauger, and Atlanta-based architecture and engineering firm, began in the early-to-mid 1960s (Kuhlke, Wade, and Gauger was later known as Kuhlke and Wade). By August 1965, Kuhlke, Wade, and Gauger had developed the preliminary site plan, floorplan, and elevations for the Gordon Lakes golf clubhouse (Figure 3 and Figure 4).<sup>24</sup> The designs, though, were not finalized until circa 1974 (Figure 5 and Figure 6).<sup>25</sup> A year later, in 1975, Robert Trent Jones was brought on to aid in the golf course's landscape design.<sup>26</sup>

---

<sup>21</sup> Anderson, D., June 16, 2000.

<sup>22</sup> Army MWR (Morale, Welfare and Recreation). "Gordon Lakes Golf Club." Fort Gordon.

<sup>23</sup> Army MWR (Morale, Welfare and Recreation). "Gordon Lakes Golf Club." Fort Gordon.

<sup>24</sup> Clubhouse 1965 PDF. Fort Gordon Directorate of Public Works (DPW) files.

<sup>25</sup> Clubhouse 1974 PDF.

<sup>26</sup> Site Plans PDF.

Figure 3. Detail of preliminary site plan for the Gordan Lakes Golf Clubhouse (prior to Robert Trent Jones' involvement) designed by Kuhlke, Wade, and Gauger, 1965. (Fort Gordon Directorate of Public Works [DPW]. Public Domain.)



Figure 4. Clubhouse (1965 scheme) floorplan at Gordon Lakes Golf Club designed by Kuhlke, Wade, and Gauger. (Fort Gordon DPW. Public Domain.)

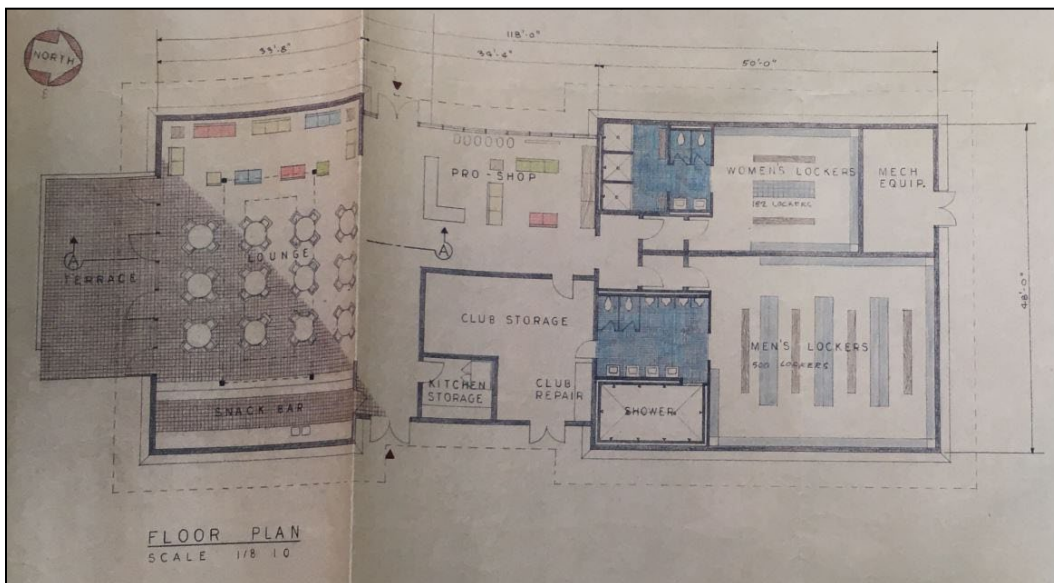


Figure 5. Clubhouse (1974 final) floorplan at Gordon Lakes Golf Club designed by Kuhlke and Wade. (Fort Gordon DPW. Public Domain.)

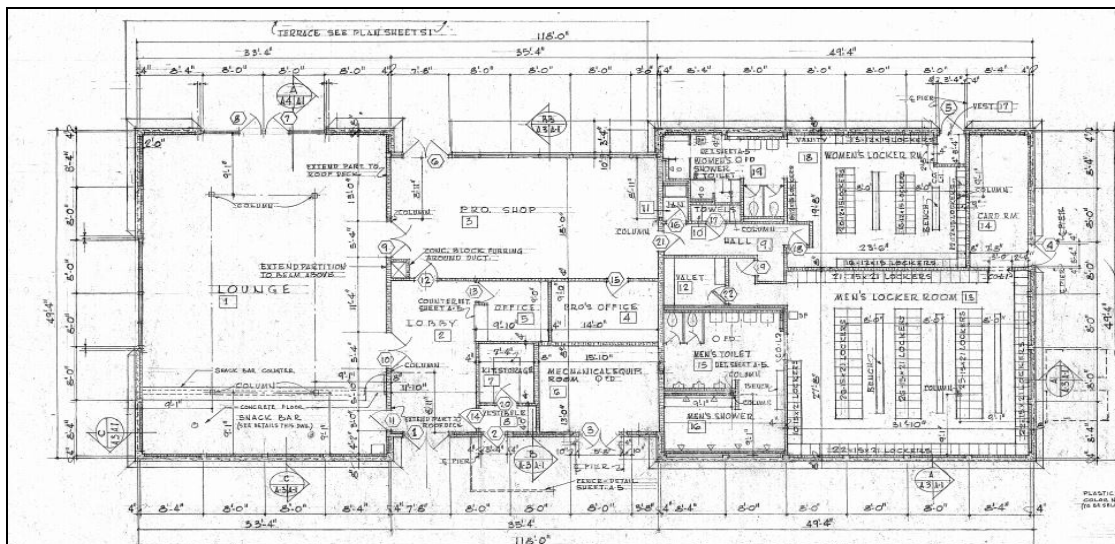
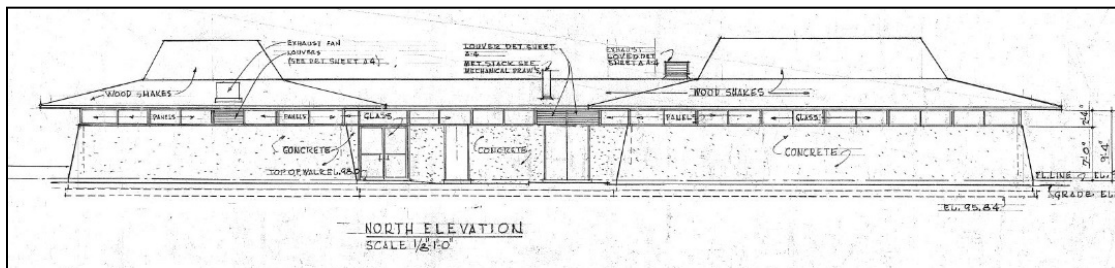


Figure 6. Clubhouse (1974 final) south elevation at Gordon Lakes Golf Club designed by Kuhlke and Wade. (Fort Gordon DPW. Public Domain.)



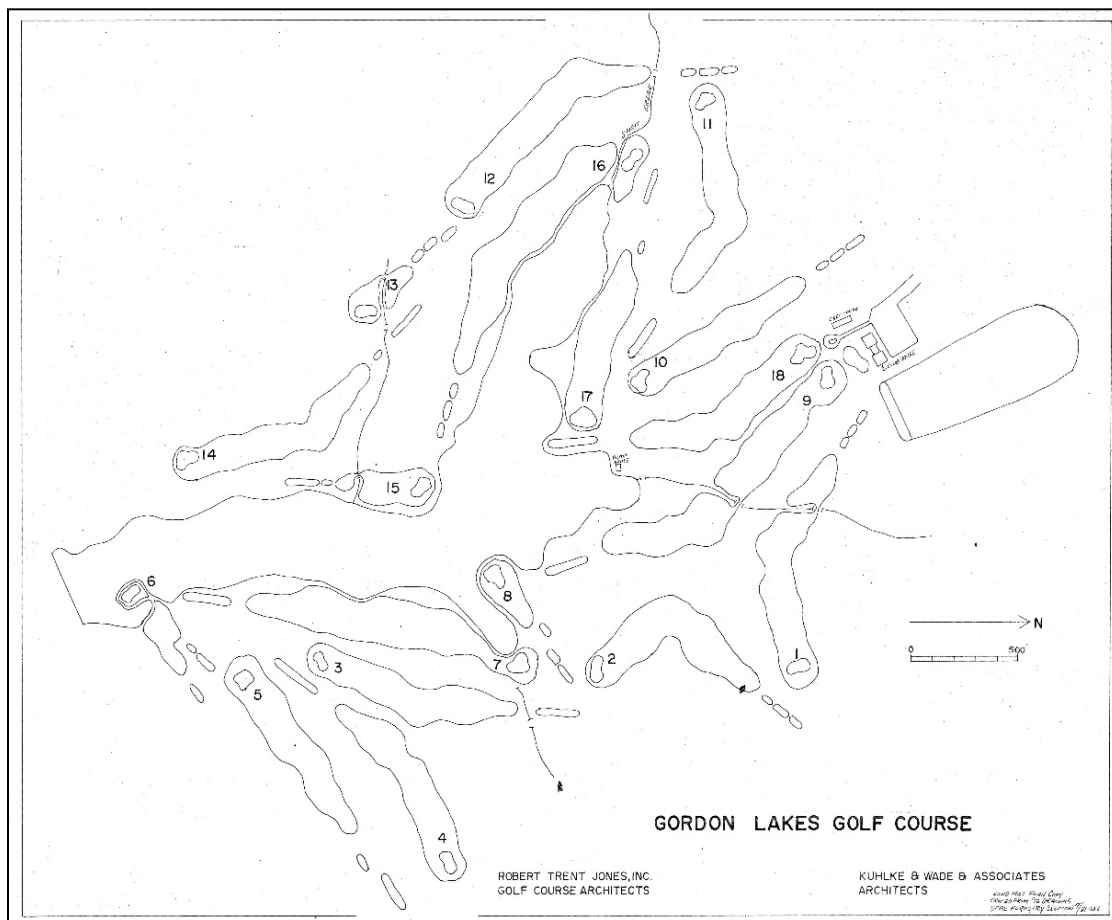
While the exact reasoning behind the recruitment of Robert Trent Jones' for the course's landscape design is unknown, it is likely because of his prolific portfolio of golf course landscape designs, including multiple courses located at military installations, including the following:

- Custer Hill Golf Course at Fort Riley, Kansas (1922)
- West Point Golf Course at the US Military Academy in West Point, New York (1948)
- Fort Belvoir Golf Club at Fort Belvoir, Virginia (1950)
- Fort Benning Golf Club at Fort Benning, Georgia (1950)
- Eisenhower Golf Club, Blue Course, at the US Air Force Academy in Colorado Springs, Colorado (1951)
- Manatee Cove Golf Course at Patrick Air Force Base, Florida (1961)
- Willow Lakes Golf Course at Offutt Air Force Base, Nebraska (1963)<sup>27</sup>

<sup>27</sup> The Robert Trent Jones Society. "Chronological Listing of Golf Courses Designed & Remodeled by Robert Trent Jones, Sr." RTJ SNR Course List.

While nine holes were later added to the golf course, the original eighteen holes were designed by Robert Trent Jones in 1975 (Figure 7). In keeping with his design philosophy of working with the existing landscape, Jones incorporated the Spirit Creek (Gordon Lake) Dam, which had been designed by Kuhlke and Wade Architects in 1973 (real property list says it was completed in 1975). He also incorporated Gordon Lake, a 20-acre reservoir formed by the Gordon Lake Dam, designing six holes that utilize the lake as a hazard (Figure 8 and Figure 9). There is also a green located on an island within the lake (Figure 10). With these characteristics, the course is challenging, which was one of Jones' goals for the course. Another primary goal of his was to create one-of-a-kind sightlines featuring trees and undulating greens (Figure 11, Figure 12, and Figure 13), both of which are typical of Jones golf course designs.<sup>28</sup>

Figure 7. Site plan and layout for the Gordon Lakes Golf Course by Robert Trent Jones, Inc. and Kuhlke and Wade and Associates, traced July 1981. (Fort Gordon DPW. Public Domain.)



<sup>28</sup>Army MWR (Morale, Welfare and Recreation). "Gordon Lakes Golf Club." Fort Gordon. Accessed March 2021.

Figure 8. Site plan for Gordon Lakes golf course showing full course layout, no date. (Fort Gordon DPW. Public Domain.)

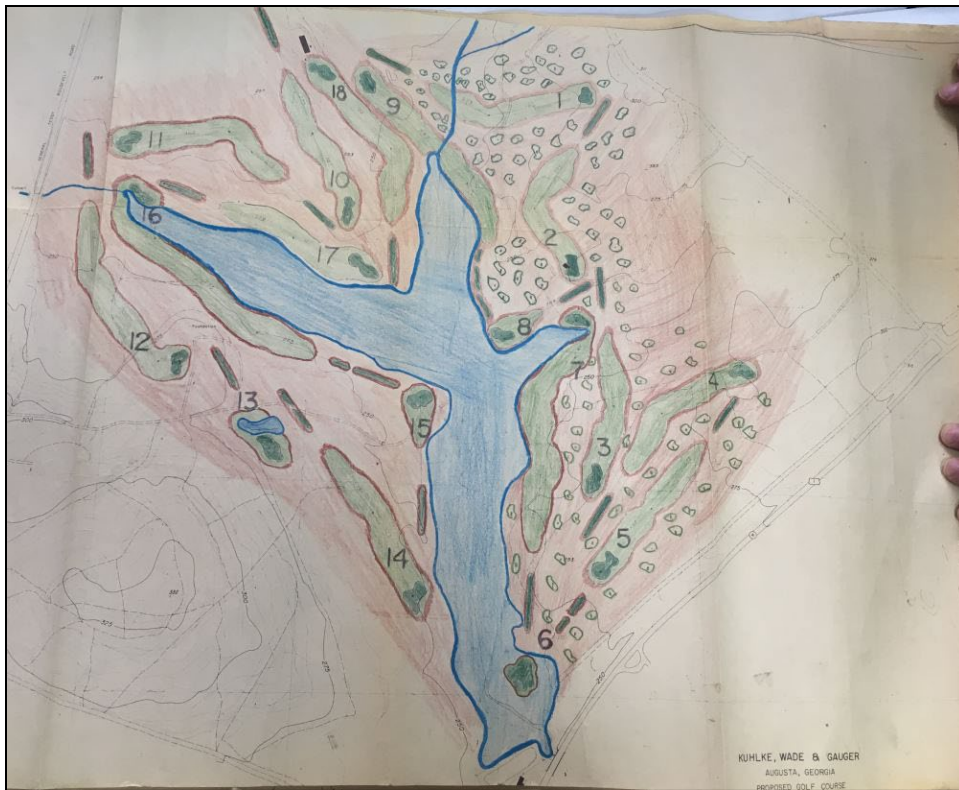


Figure 9. Using Gordon Lake as a water hazard at Gordon Lakes is a typical Jones design element. (ERDC-CERL, 2020. Public domain.)

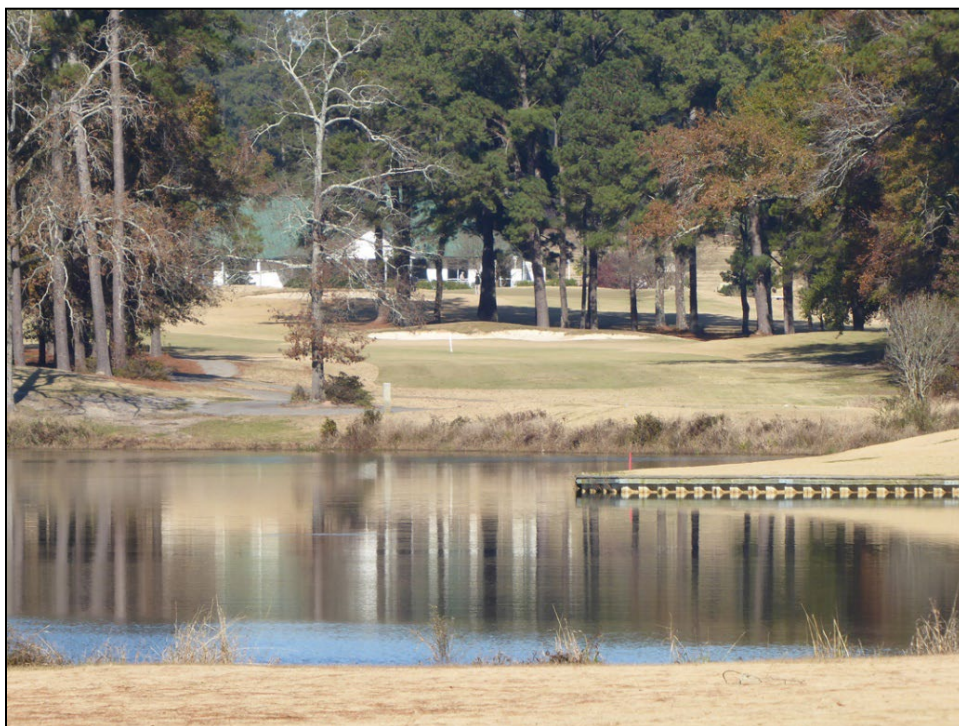


Figure 10. Green located on an island at Gordon Lakes Golf Club is another signature Jones design. (ERDC-CERL, 2020. Public domain.)



Figure 11. “Undulating” greens at Gordon Lakes are another typical Jones design element. (ERDC-CERL, 2020. Public domain.)



Figure 12. Robert Trent Jones's love of nature is exemplified through trees located on the edge of the greens at Gordon Lakes. (ERDC-CERL, 2020. Public domain.)



Figure 13. Robert Trent Jones's one-of-a-kind sightlines at Gordon Lakes Golf Club. (ERDC-CERL, 2020. Public domain.)



Additional features Robert Trent Jones utilized in his design include Gordon Lake Dam (Figure 14, Figure 15, and Figure 16), designed by Kuhlke and Wade, and the golf driving range, also attributed to Jones along with the golf course.

Figure 14. Site plan for Gordon Lake Dam, 1973. (Fort Gordon DPW. Public Domain.)

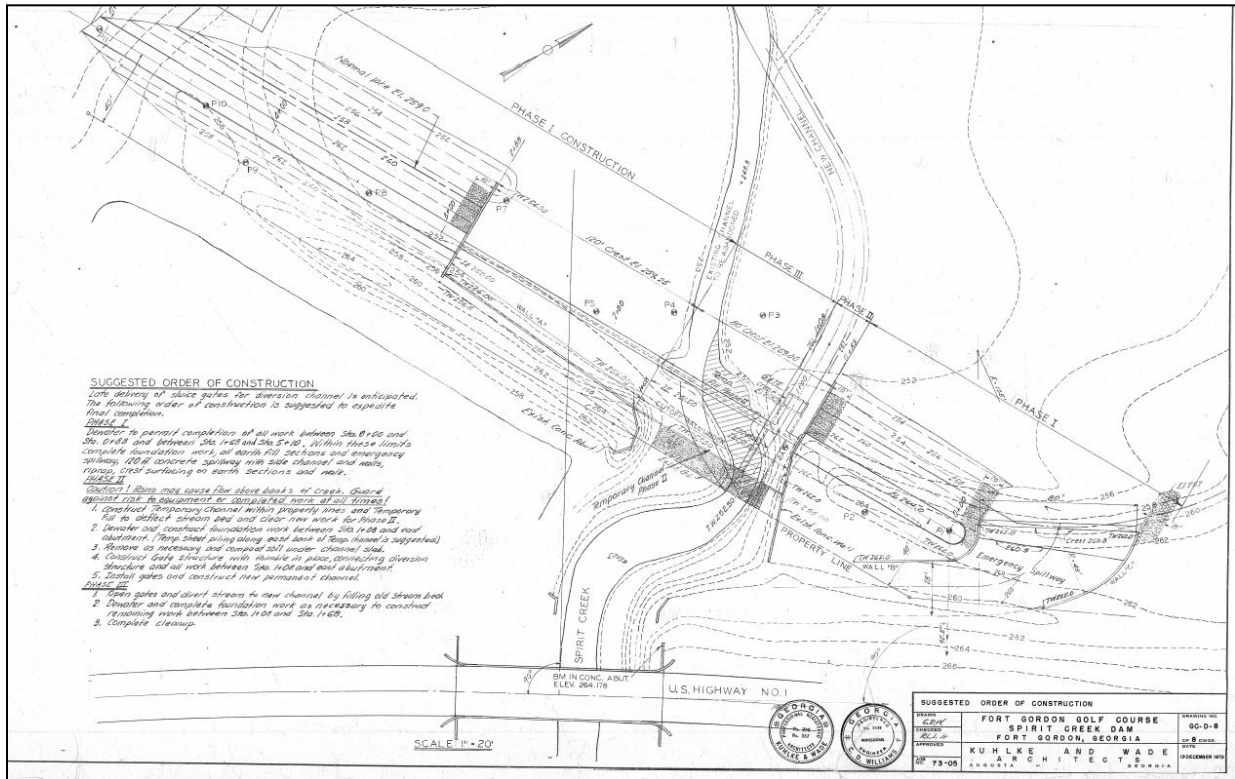


Figure 15. Looking south at a section of Gordon Lake dam, 1973. (Fort Gordon DPW. Public Domain.)

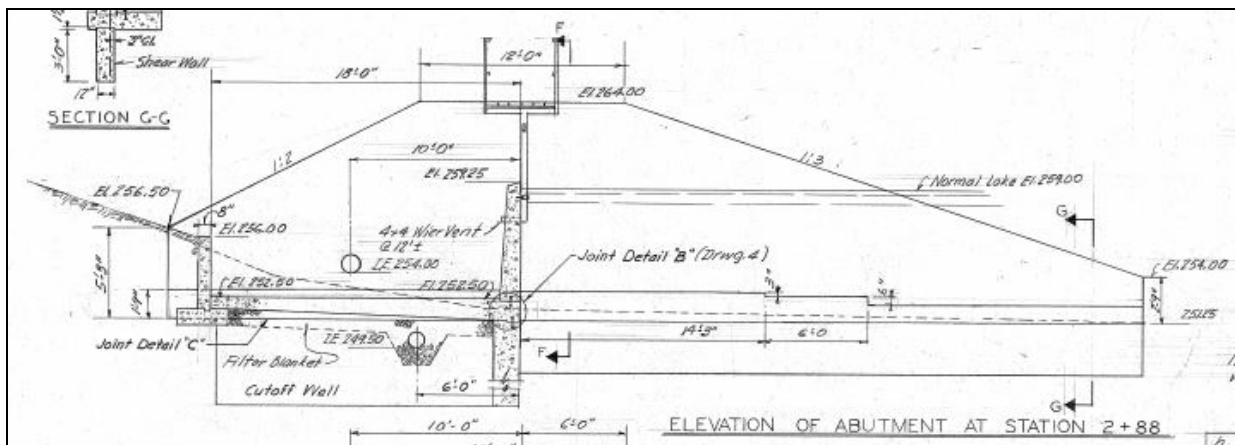


Figure 16. Looking north at Gordon Lake dam. (ERDC-CERL, 2020. Public domain.)



Construction at Gordon Lakes Golf Club has continued, with numerous support buildings constructed between 1995 and 2009 (Figure 17, Figure 18, Figure 19, and Figure 20), as well as an additional 9-hole golf course constructed in 2002 (real property list says 2009) (Figure 21).

Additionally, the clubhouse was significantly altered at an unknown date, likely circa 2009, to feature a replacement gable roof with a cross-gabled entry pavilion addition (Figure 22).

Figure 17. A footbridge at Gordon Lakes Golf Club added to the landscape in 2009.  
(ERDC-CERL, 2020. Public domain.)



Figure 18. Range ball facility, constructed in 2010, at Gordon Lakes Golf Club.  
(ERDC-CERL, 2020. Public domain.)



Figure 19. Recreation support building/shed/starter shack, constructed in 2009, at Gordon Lakes Golf Club. (ERDC-CERL, 2020. Public domain.)



Figure 20. Pavilion, constructed 2007, at Gordon Lakes Golf Club. (ERDC-CERL, 2020. Public domain.)



Figure 21. Current course layout at Gordon Lakes Golf Club, no date. (Fort Gordon DPW. Public Domain.)

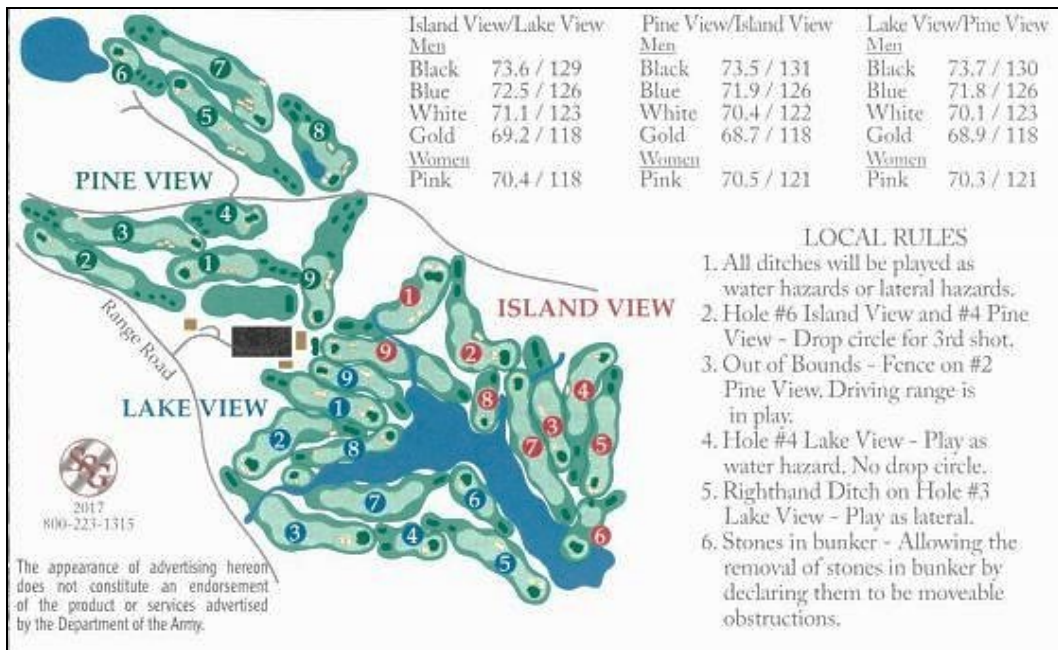


Figure 22. Clubhouse constructed in 1975 and designed by Kuhlke and Wade at Gordon Lakes Golf Club. (ERDC-CERL, 2020. Public domain.)



## 3 Determination of Significance

### 3.1 Categories of historic properties

The identification of historically significant properties is achieved only through the evaluation of their position within the larger historic context. According to the NRHP, historic contexts are defined as “...the patterns, themes, or trends in history by which a specific occurrence, property, or site is understood, and its meaning (and ultimately its significance) within prehistory or history is made clear.”<sup>29</sup> A historic property is determined significant or not significant depending on the application of standardized NRHP criteria within the property’s historical context. To qualify as historic, a property must have an association with a relevant historic context as well as having retained its physical integrity through which its historic significance is conveyed. The NRHP categorizes significant properties as buildings, sites, districts, structures, or objects, defined as follows:<sup>30</sup>

**Building:** A building is created principally to shelter any form of human activity. Examples of buildings include: administration building, house, barn, stable, train station, church, or shed.

**Structure:** Structures are distinguished from buildings by being functional constructions made for purposes other than creating human shelter. Examples of structures include: aircraft hangars, bandstands, bridges, canals, fences, kilns, or windmills.

**Object:** The term object is used to distinguish from buildings and structures those constructions that are primarily artistic in nature or are relatively small in scale and simply constructed. Although it may be, by nature or design, movable, an object is associated with a specific setting or environment. Examples of objects include boundary markers, fountains, monuments, sculptures or statues.

---

<sup>29</sup> NPS, *National Register Bulletin #15: How to Apply the National Register Criteria for Evaluation*, 7.

<sup>30</sup> NPS, *National Register Bulletin #15: How to Apply the National Register Criteria for Evaluation*, 9.

**Site:** A site is the location of a significant event, a prehistoric or historic occupation or activity, or a building or structure, whether standing, ruined, or vanished, where the location itself possesses historic, cultural, or archeological value regardless of the value of any existing structure. Examples of sites include: battlefield, campsite, ceremonial site, designed landscape, rock shelter, or village site.

**District:** A district possesses a significant concentration, linkage, or continuity of sites, buildings, structures, or objects united historically or aesthetically by plan or physical development. A district can comprise both features that lack individual distinction and individually distinctive features that serve as focal points. A group of features lacking in individual distinction may even be considered eligible if the grouping achieves significance as a whole within its historic context. While a district derives its importance from being a unified entity, it can contain buildings, structures, sites, objects, or open spaces that do not contribute to the significance of the district if these properties do not adversely affect the district's integrity.<sup>31</sup>

### 3.2 NRHP definitions and criteria

The NRHP Criteria for Evaluation describe how properties and districts are significant for their association with important events or persons (Criterion A and Criterion B), for their importance in design or construction (Criterion C), or for their information potential (Criterion D). A property may be significant under one or more criteria. The following is a brief description of each of the four NRHP Criteria for Evaluation:<sup>32</sup>

---

<sup>31</sup> NPS, *National Register Bulletin #15: How to Apply the National Register Criteria for Evaluation*, 9.

<sup>32</sup> NPS, *National Register Bulletin #15: How to Apply the National Register Criteria for Evaluation*, 2.

**A. Event**—associated with events that have made a significant contribution to the broad patterns of our history; or

**B. Person**—associated with the lives of persons significant in our past; or

**C. Design/Construction**—embodies the distinctive characteristics of a type, period, or method of construction; or that represents the work of a master; or that possesses high artistic values; or that represents a significant and distinguishable entity whose components may lack individual distinction; or

**D. Information Potential**—yielded, or may be likely to yield, information important in prehistory or history.<sup>33</sup>

**Criterion Consideration G**—a property achieving significance within the past fifty years is eligible if it is of exceptional importance.

A property that has achieved significance within the past fifty years can be evaluated only when sufficient historical perspective exists to determine that the property is exceptionally important. The necessary perspective can be provided by scholarly research and evaluation and must consider both the historic context and the specific property's role in that context.<sup>34</sup>

### 3.3 Final recommendations of significance

The overall time period investigated for this report was from 1975 through 2009. Through researching the archival records and using the historic context developed in Chapter 2 of this report, the researcher determined that there was one period of significance: 1975 to 1976, associated with the planning, design, and construction of the Gordon Lake Golf Course by Kuhlke and Wade and Robert Trent Jones. There are 6 buildings,

---

<sup>33</sup> NPS, *National Register Bulletin #15: How to Apply the National Register Criteria for Evaluation*, 2.

<sup>34</sup> NPS, *National Register Bulletin #15: How to Apply the National Register Criteria for Evaluation*, 2.

structures, and landscapes associated with this period of significance, and their integrity is addressed in Chapter 5.

### 3.4 1965 through 1976

The first drawings, including site and floor plans, for the Gordon Lake Golf Course were produced in 1965. The Spirit Creek (Gordon Lake) Dam was designed in 1973 and most likely constructed in 1975 (as provided on the real property list), and the remainder of the original 18-hole golf course and associated buildings, structures, and features were constructed in 1975 and 1976. A total of six facilities that were constructed from 1975 to 1976 were surveyed for this report (Table 2) along with 18 other facilities that were constructed after the period of significance.

Table 2. List of buildings, structures, and landscapes constructed between 1975 and 1976, that were evaluated at the Gordon Lakes Golf Course (Fort Gordon DPW).

Building	Building Name	Acquisition Date
537	Clubhouse	1975
GL018	18-hole Golf Course	1975
GL019	Golf Driving Range	1975
G0871	Gordon Lake Dam	1975
GL001	Gordon Lake Golf Course Footbridge	1976
GL009	Gordon Lake Golf Course Footbridge	1976

The following section detail findings regarding the historical significance of the six buildings, structures, and landscapes constructed between 1965 to 1976.

#### 3.4.1 For Criterion A—Event

There is no significant event associated with GL018, GL019, G0871, GL001, and GL009 or Building 537.

#### 3.4.2 For Criterion B—Person

There is no significant person associated with GL018, GL019, G0871, GL001, and GL009 or Building 537.

### **3.4.3 For Criterion C—Design/Construction**

The design and construction of GLO18 (18-hole golf course) and GLO19 (golf driving range) are linked to Robert Trent Jones, a notable golf course architect who was active throughout the 20th century. Further, GLO18 is representative of the work of a master, Robert Trent Jones. Building 537 and structures G0871, GLO01, and GLO09 were designed by the noted Augusta, Georgia architectural firm of Kuhlke and Wade. The construction of these features was not part of a large program of military construction funding.

### **3.4.4 For Criterion D—History**

The available historical records provided no indication that GLO18, GLO19, G0871, GLO01, and GLO09 or Building 537, have yielded, or were likely to yield, any information important in history.

## **3.5 Historic district**

None of the 6 buildings, structures, and landscapes was related to any existing historic district, and none of them were found to comprise a historic district related to the 1965 to 1976 period of significance.

## **3.6 National, state, or local significance**

The available historical records give no indication that these 6 buildings, structures, and landscapes have any significance at a national or state level of significance. The 6 buildings, structures, and landscapes are significant at the local level for Fort Gordon, Georgia and Augusta, Georgia.

## 4 Current Conditions

There are 14 buildings, 7 structures, and 3 landscapes constructed between 1975 and 2009 on the list given to researchers to evaluate (Figure 23); however, only 6 are associated with the period of significance of 1975 to 1976 and recommended significant under Criterion C. This chapter will discuss their current conditions and the photos in this chapter will provide a general idea of their appearance.

Figure 23. Location of the evaluated buildings within the Gordon Lakes Golf Course in 2022. (Map data: Google, 2021.)



#### 4.1 GL018, 18-hole golf course

The construction of GL018, 18-hole golf course, was part of the landscape design produced by Robert Trent Jones in partnership with Kuhlke and Wade. It was constructed in November 1975 as an 18-hole golf course based on Jones' design, and it maintains its historic use.

GL018 has many features that are representative of Robert Trent Jones' golf course designs, including the incorporation of existing features (Gordon Lake and an associated island), the use of a lake as a hazard, challenging holes, one-of-a-kind sightlines, and tree-lined and undulating greens (Figure 24 through Figure 37).

Figure 24. View east down the entrance road into the Gordon Lakes Golf Course complex. (ERDC-CERL, 2020. Public domain.)



Figure 25. Entrance sign to Gordon Lakes Golf Course. (ERDC-CERL, 2020. Public domain.)



Figure 26. Entrance gate into Gordon Lakes Golf Course. (ERDC-CERL, 2020. Public domain.)



Figure 27. Looking east from the Clubhouse to the entrance to greens. (ERDC-CERL, 2020. Public domain.)



Figure 28. Looking southeast at the entrance to the greens. (ERDC-CERL, 2020. Public domain.)



Figure 29. Looking southeast at the entrance signs for the greens. (ERDC-CERL, 2020. Public domain.)



Figure 30. Looking southeast at the undulating landscape of Robert Trent Jones's landscape for the greens. (ERDC-CERL, 2020. Public domain.)



Figure 31. Trees utilized by Robert Trent Jones’s landscape for bordering the greens. (ERDC-CERL, 2020. Public domain.)



Figure 32. Looking towards a sand pit in Robert Trent Jones’s landscape. (ERDC-CERL, 2020. Public domain.)



Figure 33. Looking through the pines at a green in Robert Trent Jones's landscape. (ERDC-CERL, 2020. Public domain.)



Figure 34. Looking southeast at the undulating landscape of Robert Trent Jones's design with Gordon Lake in the distance. (ERDC-CERL, 2020. Public domain.)



Figure 35. Looking southeast at Gordon Lake and Robert Trent Jones's landscape.  
(ERDC-CERL, 2020. Public domain.)



Figure 36. Looking north across Gordon Lake to the golf course and the undulating landscape of Robert Trent Jones's design.  
(ERDC-CERL, 2020. Public domain.)



Figure 37. Hole 6 on an island in Gordon Lake as part of the landscape of Robert Trent Jones's design. (ERDC-CERL, 2020. Public domain.)



## 4.2 GL019, golf driving range

The construction of GL019, golf driving range (Figure 38 through Figure 43), was part of the landscape design produced by Robert Trent Jones in partnership with Kuhlke and Wade. It was constructed in July 1975 as a golf driving range based on Jones' design, and it maintains its historic use.

Figure 38. Looking northeast along the path on the southeast side of GL019 (Driving Range) with Building 536 in the foreground and Building 541 in the distance. (ERDC-CERL, 2020. Public domain.)



Figure 39. Looking north at Building 541 (Range Ball Facility) and golf cart parking area. (ERDC-CERL, 2020. Public domain.)



Figure 40. Looking northwest from Building 541 (Range Ball Facility) across the driving range (GL019). (ERDC-CERL, 2020. Public domain.)



Figure 41. Looking southwest with Building 541 (Range Ball Facility) on the left across the driving range (GL019). (ERDC-CERL, 2020. Public domain.)



Figure 42. Looking north across vinyl fence along the golf cart path to the 9-hole golf course (constructed in 2000). (ERDC-CERL, 2020. Public domain.)



Figure 43. Looking southwest along the golf cart path to Building 537 (Clubhouse). (ERDC-CERL, 2020. Public domain.)



### 4.3 G0021 (formerly Building 538) Water Supply Building

G0021 was constructed in 2002 as a water supply building to replace Building 538, Water Supply Building, which was likely designed by Kuhlke and Wade in November 1975. The shore of Gordon Lake near G0021 was modified at the same time. The new water supply building was necessary because of the construction of the PINEO to the north of the existing golf course in 2002 (Figure 44).

Figure 44. View of G0021, which is the water intake building for the golf course, constructed in 2002. (ERDC-CERL, 2020. Public domain.)



#### 4.4 G0871, Gordon Lake Dam

The construction of G0871, Gordon Lake Dam, was incorporated as part of the landscape design produced by Robert Trent Jones in partnership with Kuhlke and Wade. It was designed in 1973 and constructed in November 1975 as a dam based on the engineering design of Kuhlke and Wade, and it maintains its historic use. While not really visible in views and viewsheds from the designed golf course, the dam is integral in the creation of the lake and the golf course design (Figure 45 through Figure 47).

Figure 45. Looking north along the top of the Gordon Lake Dam. (ERDC-CERL, 2020. Public domain.)



Figure 46. Looking north along the spillway on Gordon Lake Dam. (ERDC-CERL, 2020. Public domain.)



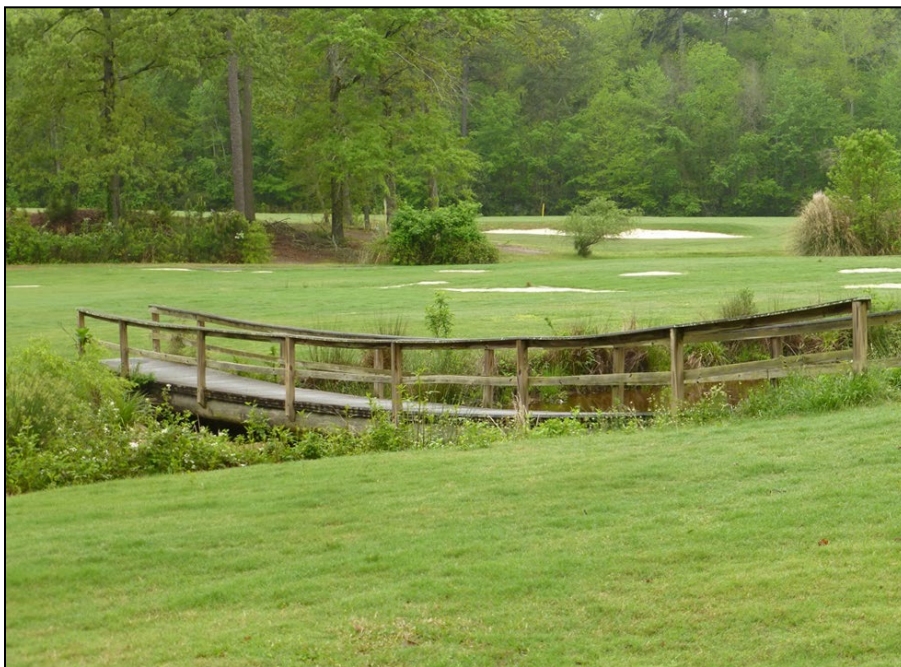
Figure 47. Detail of Gordon Lake Dam. (ERDC-CERL, 2020. Public domain.)



#### 4.5 GL001, Gordon Lake Golf Course footbridge

The construction of GL001, Gordon Lake Golf Course footbridge, could not be attributed to either Robert Trent Jones or Kuhlke and Wade as it was not seen on any plans or drawings. It was constructed in July 1976 as a footbridge, and it maintains its historic use (Figure 48).

Figure 48. View of GL001 (pedestrian bridge) over Spirt Creek that dates to 1975. (ERDC-CERL, 2015. Public domain.)



#### 4.6 GL009, Gordon Lake Golf Course footbridge

The construction of GL009, Gordon Lake Golf Course footbridge, could not be attributed to either Robert Trent Jones or Kuhlke and Wade as it was not seen on any plans or drawings. It was constructed in July 1976 as a footbridge, and it maintains its historic use (Figure 49).

Figure 49. View of GL009 (pedestrian bridge) that dates to 1976. (ERDC-CERL, 2020. Public domain.)



#### 4.7 Building 531, HazMat Storage

Building 531, HazMat Storage, was constructed in July 1995, and is 800 ft<sup>2</sup>. The golf course maintenance area is located north of the main driveway and west of the golf club parking lot.

#### 4.8 Building 532, HazMat Storage

Building 532, HazMat Storage, was constructed in July 1995, and is 1,000 ft<sup>2</sup>. The golf course maintenance area is located north of the main driveway and west of the golf club parking lot.

#### 4.9 Building 533, Golf Course Maintenance

Building 533, Golf Course Maintenance building, was constructed in July 1999, and is 7,560 ft<sup>2</sup>. The golf course maintenance area is located north of the main driveway and west of the golf club parking lot.

#### 4.10 Building 535, Bathroom/Showers

Building 535, Bathroom/Showers, was constructed in May 2007, and it has 196 ft<sup>2</sup> (Figure 50).

Figure 50. View of Building 535 (Bathroom/Showers), constructed in 2007. (ERDC-CERL, 2020. Public domain.)



#### 4.11 Building 536, REC (Recreation) Support Building/Shed/Start Shack

Building 536, REC Support Building/Shed/Start Shack, was constructed in September 2009 as a recreation support building, and it has 186 ft<sup>2</sup> (Figure 51).

Figure 51. Looking west at Building 536 (REC Support Building), constructed in 2009. (ERDC-CERL, 2020. Public domain.)



#### 4.12 Building 537, Golf Course Clubhouse

Building 537, Golf Course Clubhouse, was designed by Kuhlke and Wade. It was constructed in November 1975 as a golf course clubhouse with 5,587 ft<sup>2</sup>. It was heavily modified between 2002 and 2007 with the removal of its signature wood shake mansard roof and a green, metal gable roof erected over the entire building. The battered concrete walls and ribbon windows were replaced with stucco walls and large vertically oriented windows (Figure 52 through Figure 57). It maintains its historic use.

Figure 52. Northwest side of Building 537 (Clubhouse), constructed in 1975 and modified in the 2000s (ERDC-CERL, 2020. Public domain.)



Figure 53. Close-up of the front entrance to Building 537 (Clubhouse), constructed in 1975 and modified in the 2000s. (ERDC-CERL, 2020. Public domain.)



Figure 54. Looking east at Building 537 (Clubhouse), constructed in 1975 and modified in the 2000s. (ERDC-CERL, 2020. Public domain.)



Figure 55. Southeast side of Building 537 (Clubhouse), constructed in 1975 and modified in the 2000s. (ERDC-CERL, 2020. Public domain.)



Figure 56. Looking northwest to Building 537 (Clubhouse), constructed in 1975 and modified in the 2000s. (ERDC-CERL, 2020. Public domain.)



Figure 57. Looking southeast from Building 537 (Clubhouse), out to the practice green. (ERDC-CERL, 2020. Public domain.)



### 4.13 Building 539, Cart Barn

Building 539, Cart Barn, was constructed in January 2010 as a storage facility for golf carts. The barn was heavily damaged by a fire in 2011 and subsequently renovated (Figure 58).

Figure 58. Looking southwest at Building 539 (Cart Barn), constructed in 2010.  
(ERDC-CERL, 2020. Public domain.)



### 4.14 Building 541, Range Ball Facility

Building 541, Range Ball Facility, was constructed in January 2010 as a golf course support building, and it has 114 ft<sup>2</sup> (Figure 59).

Figure 59. Looking northwest at Building 541 (Range Ball Facility). (ERDC-CERL, 2020. Public domain.)



#### **4.15 Building 542, Water Treatment/Chlorination Building**

Building 542 was constructed in 1989 as a water treatment and chlorination building. It has 36 ft<sup>2</sup> and was constructed in July 1989.

#### **4.16 Building 546, Water Treatment/Chlorination Building**

Building 546 was constructed in 1989 as a water treatment and chlorination building. It has 36 ft<sup>2</sup> and was constructed in July 1989.

#### **4.17 Building 544, Pavilion**

Building 544, Pavilion, was constructed in March 2007 as a shelter for golfers during large events (Figure 60 and Figure 61).

Figure 60. Looking northwest at Building 544 (Pavilion). (ERDC-CERL, 2020. Public domain.)



Figure 61. Looking south at Building 544 (Pavilion). (ERDC-CERL, 2020. Public domain.)



#### 4.18 Building 545, Bathroom/Showers

Building 545, Bathroom/Showers, was constructed in May 2007, and it has 196 ft<sup>2</sup> (Figure 62).

Figure 62. View of Building 545 (Bathroom/Showers), constructed in 2007. (ERDC-CERL, 2020. Public domain.)



#### 4.19 Building 546, Bathroom/Showers

Building 546, Bathroom/Showers, was constructed in May 2007, and it has 196 ft<sup>2</sup>.

#### 4.20 ISLD7, Bridge at Gold Course

ISLD7 is a bridge over a creek near Hole 7 in the Island View portion of the golf course. It was erected in 2009 by Nature Bridges. The design is of glue lam free-span girders and timber decking. The glue lam girders and four corner posts are faced with manufactured flagstones (Figure 63).

Figure 63. View of ISLD7, which is a glue lam and timber decked bridge erected in 2009. (ERDC-CERL, 2020. Public domain.)



#### 4.21 LAKE3, Golf Course Pedestrian Bridge

LAKE3 is a bridge over Spirit Creek near Hole 3 in the Lake Side portion of the golf course. It was erected in 2009 by Nature Bridges. The design is of glue lam free-span girders and timber decking. The glue lam girders and four corner posts are faced with manufactured flagstones (Figure 64).

Figure 64. View of LAKE3, which is a glue lam and timber decked bridge erected in 2009. (ERDC-CERL, 2020. Public domain.)



## 4.22 LAKE7, Golf Course Bridge

LAKE7 is a bridge over Spirit Creek near Hole 7 in the Lake Side portion of the golf course. It was erected in 2009 by Nature Bridges. The design is of glue lam free-span girders and timber decking. The glue lam girders and four corner posts are faced with manufactured flagstones (Figure 65).

Figure 65. View of LAKE7, which is a glue lam and timber decked bridge erected in 2009. (ERDC-CERL, 2020. Public domain.)



## 4.23 PINE0, 9-hole Golf Course

PINE0 was an additional 9-hole golf course to the north of GLO19 (golf driving range). It was designed by the firm of Ault, Clark & Associates beginning in 2000 (architect website has dates of 2002, 2004 and 2006).<sup>35</sup> The Real Property list has it constructed in 2009.

## 4.24 Bridge between LAKE3 and LAKE7

This bridge which does not have a facility number but crosses over Spirit Creek between Holes 3 and 7 in the Lake Side portion of the golf course. It was erected in 2009 by Nature Bridges. The design is of glue lam free-span girders and timber decking. The glue lam girders and four corner posts are faced with manufactured flagstones.

---

<sup>35</sup> Project list of Military Golf Courses designed by ACA Golf, [https://www.acagolf.com/acagolf/pages/project\\_list/Project%20Listmilitary01-2.html](https://www.acagolf.com/acagolf/pages/project_list/Project%20Listmilitary01-2.html).

## 5 Seven Aspects of Integrity

In addition to possessing historical significance, a property must also retain sufficient physical integrity of features in order to convey its significance and be eligible for listing on NRHP.<sup>36</sup> Integrity has very specific connotations in defining historic and cultural resources. Integrity is the authenticity of physical characteristics from which resources obtain their significance. Historic properties convey their significance through their integrity. Historic properties both retain integrity and convey their significance, or they do not.

The National Register recognizes seven aspects or qualities of a property that define the concept of integrity. To retain historic integrity, a property must possess several, and usually most, of the seven aspects. The retention of specific aspects of historic integrity is paramount for a property to convey its significance. Determining which of these aspects are most important to a particular property requires knowing why, where, and when the property is significant. The seven aspects of integrity are listed in *National Register Bulletin #15: How to Apply the National Register Criteria for Evaluation* and summarized below:

1. *Location* is the place where the historic property was constructed, or the place where the historic event occurred.  
*All six buildings, structures, and landscapes retain their integrity of location.*
2. *Design* is the combination of elements that create the form, plan, space, structure, and style of a property. It results from conscious decisions made during the original conception and planning of a property (or its significant alteration) and applies to activities as diverse as community planning, engineering, architecture, and landscape architecture. Design includes such elements as organization of space, proportion, scale, technology, ornamentation, and materials.  
*GL018, GL019, G0871, GL001, and GLO09 the key elements of their design. Building 537 does not retain the key elements of its design due to alterations that occurred in the early 21st century.*

---

<sup>36</sup> NPS, *National Register Bulletin #15*, 44–45.

3. *Setting* is the physical environment of a historic property. Setting refers to the character of the place in which the property played its historical role. It involves how, not just where, the property is situated and its relationship to surrounding features and open space.  
*All six buildings, structures, and landscapes retain their integrity of setting within a recreational golf course.*
4. *Materials* are the physical elements that were combined or deposited during a particular period of time and in a particular pattern or configuration, to form a historic property.  
*GLO18, GLO19, GO871, GLOO1, and GLOO9 retain their key materials of the original design while Building 537 does not retain the key architectural materials due to the complete change in the roof and wall materials.*
5. *Workmanship* is the physical evidence of the crafts of a particular culture or people during any given period in history or prehistory.  
*Workmanship is not a key part of integrity for the six buildings, structures, and landscapes surveyed.*
6. *Feeling* is a property's expression of the aesthetic or historic sense of a particular time period.  
*GLO18 and GLO19 retains their integrity of feeling as a designed golf course and associated driving range that incorporated existing natural features. GO871 retains its feeling as a dam. GLOO1 and GLOO9 retain their feeling as pedestrian bridges. Building 537 does not retain its feeling as a Mid-century Modern golf course clubhouse.*
7. *Association* is the direct link between an important historic event or person and a historic property.<sup>37</sup>  
*All six buildings, structures, and landscapes retain their integrity of association.*

Historic districts and individual resources are considered significant if they possess a majority of the seven aspects outlined above. Properties are classified as either “contributing” or “noncontributing” resources. Contributing resources date from the historic period of significance that has been established. They contribute significance and character through their historical associations and/or architectural values. Noncontributing resources are those that, because of the date of construction, alterations, or other factors, do not contribute to the district’s historic significance or character.

---

<sup>37</sup> NPS, *National Register Bulletin* #15, 44–45.

## 6 Final Recommendations and Conclusion

The identification of historically significant properties is achieved only through an evaluation which associates a property within a larger historic context. According to the NRHP, “Historic contexts are those patterns, themes, or trends in history by which a specific occurrence, property, or site is understood and its meaning (and ultimately significance) within prehistory or history is made clear.”<sup>38</sup> Therefore, to qualify as historic, a property must have an association with relevant historic context as well as having retained its physical integrity through which its historic significance is conveyed.

### 6.1 Final recommendations

There were 6 buildings, structures, and landscapes constructed during the period of significance and 14 others constructed outside the period of significance surveyed and evaluated for the NRHP by the research team, and only GLO18, GLO19, G0871, GLO01, GLO09, and Building 537 were found to be significant (see Table 2). The remaining buildings, structures, and landscapes were not part of the original construction and have been added to the Gordon Lakes Golf Course at various times from the 1990s through the 2010s. Although GLO01 and GLO09 were constructed during the period of significance, they could not be attributed to either Kuhlke and Wade or Robert Trent Jones and were most likely added by Fort Gordon staff. Building 537 does not retain the integrity necessary for listing on the NRHP because of the major changes to its roof structure, roofing materials, wall structure, wall surface materials, and fenestration. The researchers also could not find a cohesive historic district of these buildings, structures, and landscapes.

It is the recommendation of this report that Building 537, Golf Course Clubhouse is NOT eligible for the NRHP owing to the lack of integrity because of the changes discussed in the previous paragraph.

GLO01 and GLO09 were constructed in 1976 as footbridges. The design of the simple wood GLO01 and GLO09 foot bridges do not embody a distinctive characteristic of a type, period, or method of construction, do not represent the work of a master, and do not possess high artistic values.

---

<sup>38</sup> NPS, National Register Bulletin #15, 7.

It is the recommendation of this report that GLO01 and GLO09, Gordon Lake Golf Course Footbridges, are NOT eligible for the NRHP due to a lack of significance under Criterion C.

GLO19 was designed by Robert Trent Jones for Criterion C significance and is a representative example of his work. Therefore, it is the recommendation of this report that GLO19, Golf Driving Range, is recommended ELIGIBLE for the NRHP at the local level under Criterion C as part of the larger golf landscape of the Gordon Lakes Golf Club.

The Gordon Lake Dam, G0871, was not designed by Robert Trent Jones but was designed by the noted Augusta firm of Kuhlke and Wade and does have significance under Criterion C. It is noted that the dam, other than the catwalk, was designed so that it is not visible from the golf course. It is the recommendation of this report that G0871, Gordon Lake Dam, is recommended ELIGIBLE for the NRHP at the local level under Criterion C as part of the larger golf landscape. In addition, it is G0871 which creates Gordon Lake and the lake is a character-defining feature of the historic golf landscape of GLO18. The lake is an important part of the views and viewsheds of the golf course as well as an integral part of the design and difficulty of the course.

GLO18 was designed by Robert Trent Jones and the firm of Kuhlke and Wade and has significance under Criterion C and is a representative example of Robert Trent Jones golf course design work with its undulating green landscape, borders of pine trees, and a signature island. Therefore, it is the recommendation of this report that GLO18, Golf Course, is recommended ELIGIBLE for the NRHP at the local level under Criterion C as part of the larger golf landscape of the Gordon Lakes Golf Club.

The following table (Table 3) summarizes the recommendations of NRHP eligibility for the 6 buildings constructed at the Gordon Lakes Golf Course during the period of significance.

Table 3. List of buildings constructed from 1975 to 1976 and determination of their NRHP eligibility.

Facility Number	Built Date	Current Use	RECOMMENDED ELIGIBLE FOR THE NATIONAL REGISTER
GL018	1975	18-Hole Golf Course	YES
GL019	1975	Golf Driving Range	YES
G0871	1975	Gordon Lake Dam	YES
GL001	1976	Gordon Lake Golf Course Footbridge	NO
GL009	1976	Gordon Lake Golf Course Footbridge	NO
537	1975	Gordon Lake Golf Course Clubhouse	NO

## 6.2 Property boundary

The historic landscape site of the golf course includes GL018, GL019, and G0871 (Figure 66).

Figure 66. Boundary of the Gordon Lakes historic landscape site.  
(Map data: Google, 2021.)



### 6.3 Character-defining features

The character-defining features of the Gordon Lakes historic landscape site are tree border surrounding the entire golf course, Gordon Lake, the views across Gordon Lake, the undulating landscape of the greens, the tree borders between each fairway, the water features, and the sand pit features. G0871, Gordon Lake Dam, while a contributing part of the landscape site since it creates Gordon Lake does not of itself possess character-defining features that are necessary for interpreting the historic landscape of the golf course.

### 6.4 Conclusion

It is the recommendation of the authors of this report that GLO18, GLO19, and G0871 are ELIGIBLE for the NRHP under Criterion C as a historic landscape site, and that GLO01, GLO09, and Building 537 are **NOT** eligible for the NRHP due to lack of significance and integrity.

## Bibliography

- Anderson, Dave. 2000. "Robert Trent Jones Sr., Golf Course Architect Who Made Mark on U.S. Open, Is Dead at 93." *The New York Times*, June 16, 2000. <https://www.nytimes.com/2000/06/16/sports/robert-trent-jones-sr-golf-course-architect-who-made-mark-us-open-dead-93.html?smid=pl-share>.
- Army MWR (Morale, Welfare and Recreation). 2022. "Gordon Lakes Golf Club." *Fort Gordon*. Accessed March 2021. <https://gordon.armymwr.com/programs/gordon-lakes#s>.
- Brown, Darrel W. 21 May 2015. "Greens at North Hills." Encyclopedia of Arkansas. Updated November 2021. Accessed March 2021. <https://encyclopediaofarkansas.net/entries/greens-at-north-hills-7645/>.
- Dunes Golf and Beach Club. n.d. "Welcome to the Dunes Golf and Beach Club." *About Us*. Accessed March 2021. <https://www.thedunesclub.com/about>.
- Hansen, James. 2009. "Robert Trent Jones." *Golf Course Architecture: The Global Journalism of Golf Design and Development*, May 21, 2009. <https://golfcoursearchitecture.net/content/Robert-Trent-Jones>.
- Hazeltine National Golf Club. n.d. "History of Hazeltine." *Hazeltine National*. Accessed March 2021: <https://www.hazeltinenational.com/history>.
- Henry, P., B. Little, S. Kline, and M. Harper. 1999. *How to Prepare National Historic Landmark Nominations*. Washington, DC: US Department of the Interior-National Park Service. <https://www.nps.gov/subjects/nationalhistoriclandmarks/nhl-bulletin.htm>.
- Invited. n.d. "A 68 Year Professional Golf Legacy." *Firestone Country Club*. Accessed March of 2021. <https://www.invitedclubs.com/clubs/firestone-country-club/golf>.
- Jenkins, Rick. n.d. "The Rees Jones Era: Parts I and II." *Baltusrol Golf Club*. Accessed March of 2021. <https://www.baltusrol.org/web/pages/the-rees-jones-era>.
- NHPA (National Historic Preservation Act) of 1966. Public Law 89-665. <https://www.rd.usda.gov/sites/default/files/NationalHistoricPreservationAct.pdf>.
- NPS (National Park Service). 1997a. *How to Apply the National Register Criteria for Evaluation*. National Register Bulletin NRB 15. Washington, DC: DOI-NPS. [https://www.nps.gov/subjects/nationalregister/upload/NRB-15\\_web508.pdf](https://www.nps.gov/subjects/nationalregister/upload/NRB-15_web508.pdf).
- NPS. 1997b. *How to Complete the National Register Registration Form*. National Register Bulletin NRB 16A. Washington, DC: DOI-NPS. <https://www.nps.gov/subjects/nationalregister/upload/NRB16A-Complete.pdf>.

- NRHP (National Register of Historic Places). 2010. *Sylvan Hills Country Club Golf Course*. NR 8-6-10. Washington, DC: DOI-NPS.  
[https://www.arkansasheritage.com/docs/default-source/national-registry/pu8500-pdf.pdf?sfvrsn=d280dec\\_0](https://www.arkansasheritage.com/docs/default-source/national-registry/pu8500-pdf.pdf?sfvrsn=d280dec_0).
- Old Warson Country Club. n.d. "History of Old Warson Country Club." *Old Warson Country Club*. Accessed March 2021. <https://www.oldwarson.com/web/pages/history>.
- Pebble Beach Company. n.d. "History." *Spyglass Hill Golf Course*. Accessed March 2021: <https://www.pebblebeach.com/golf/spyglass-hill-golf-course/history/>.
- Quaker Ridge Golf Club. n.d. "Our History." *Quaker Ridge Golf Club*. Accessed March 2021. <https://quakerridgegc.org/History>.
- Robert Trent Jones Golf Club. n.d. "Our Story." *History*. Accessed March 2021. <https://www.rtgjc.com/history>.
- Robert Trent Jones Society. n.d. "Chronological Listing of Golf Courses Designed & Remodeled by Robert Trent Jones, Sr." *RTJ SNR Course List*. Accessed March 2021. [https://roberttrentjonessociety.com/wp-content/uploads/2022/03/RTJ\\_Course\\_List-1-1.pdf](https://roberttrentjonessociety.com/wp-content/uploads/2022/03/RTJ_Course_List-1-1.pdf).
- Top 100 Golf Courses LTD. n.d. "Robert Trent Jones." *Top 100 Architects*. Accessed March 2021: <https://www.top100golfcourses.com/architect/robert-trent-jones>.
- US Army. 2022. "History." *US Army Fort Gordon*. Accessed August 9, 2022. <https://home.army.mil/gordon/index.php/about/history>.
- Weeks, Kay D., and Anne E. Grimmer. 2017. *The Secretary of the Interior's Standards for the Treatment of Historic Properties with Guidelines for Preserving, Rehabilitating, Restoring & Reconstructing Historic Buildings*. (1995 version revised by Anne E. Grimmer). Washington, DC: Department of the Interior (DOI)-NPS-Technical Preservation Services (TPS).  
<https://www.nps.gov/orgs/1739/upload/treatment-guidelines-2017-part1-preservation-rehabilitation.pdf>.

## Abbreviations

CERL	Construction Engineering Research Laboratory
DOI	Department of the Interior
DPW	Directorate of Public Works
ERDC	Engineer Research and Development Center
NARA	National Archives and Records Administration
NHPA	National Historic Preservation Act
NPS	National Park Service
NRHP	National Register of Historic Places
PGA	Professional Golfers' Association of America
TPS	Technical Preservation Services
USACE	US Army Corp of Engineers
USGA	US Golf Association

# REPORT DOCUMENTATION PAGE

<b>1. REPORT DATE</b> April 2023		<b>2. REPORT TYPE</b> Final Technical Report (TR)		<b>3. DATES COVERED</b>	
				<b>START DATE</b> FY22	<b>END DATE</b> FY22
<b>4. TITLE AND SUBTITLE</b> Historic Architecture and Landscape Inventory for Gordon Lakes Golf Club, Fort Gordon, Georgia					
<b>5a. CONTRACT NUMBER</b>		<b>5b. GRANT NUMBER</b>		<b>5c. PROGRAM ELEMENT</b>	
<b>5d. PROJECT NUMBER</b>		<b>5e. TASK NUMBER</b>		<b>5f. WORK UNIT NUMBER</b>	
<b>6. AUTHOR(S)</b> August S. Fuelberth, Madison L. Story, Adam D. Smith, and Megan W. Tooker					
<b>7. PERFORMING ORGANIZATION NAME(S) AND ADDRESS(ES)</b> US Army Engineer Research and Development Center (ERDC) Construction Engineering Research Laboratory (CERL) 2902 Newmark Dr. Champaign, IL 61824				<b>8. PERFORMING ORGANIZATION REPORT NUMBER</b> ERDC/CERL TR-23-8	
<b>9. SPONSORING/MONITORING AGENCY NAME(S) AND ADDRESS(ES)</b> Cultural Resources Program Directorate of Public Works Fort Gordon, GA 30905			<b>10. SPONSOR/MONITOR'S ACRONYM(S)</b> DPW		<b>11. SPONSOR/MONITOR'S REPORT NUMBER(S)</b>
<b>12. DISTRIBUTION/AVAILABILITY STATEMENT</b> DISTRIBUTION STATEMENT A. Approved for public release. Distribution is unlimited.					
<b>13. SUPPLEMENTARY NOTES</b> Project 450904, "NRHP Evaluation of Recreation," MIPR 0011540302					
<b>14. ABSTRACT</b> <p>The US Congress codified the National Historic Preservation Act of 1966 (NHPA), through establishing the National Register of Historic Places (NRHP). The NHPA requires federal agencies to address their cultural resources, which are defined as any prehistoric or historic district, site, building, structure, or object. Section 110 of the NHPA requires federal agencies to inventory and evaluate their cultural resources, and Section 106 requires them to determine the effect of federal undertakings on those potentially eligible for the NRHP. Fort Gordon is located in northeast Georgia, directly west of Augusta-Richmond. It was first established as Camp Gordon during WWII for infantry and armor training. It has been known as Fort Gordon since 1956.</p> <p>This report provides historic context and recommends eligibility determinations for 24 buildings, structures, and landscapes associated with the Gordon Lakes Golf Club constructed between 1975 and 2009. The report recommends two Real Property landscapes (the Golf Driving Range and 18-Hole Golf Course including Gordon Lake) and one structure (Gordon Lake Dam) are eligible for the NRHP. The other 21 buildings and structures are recommended Not Eligible. Consulting with the Georgia State Historic Preservation Officer, this work fulfills Section 110 requirements for these buildings, structures, and landscapes.</p>					
<b>15. SUBJECT TERMS</b> Architectural survey; Cultural resources; Fort Gordon; Historic golf course; Historic landscape; Historic landscape survey; Historic preservation; Military reservation; National Register of Historic Places; NRHP					
<b>16. SECURITY CLASSIFICATION OF:</b>			<b>17. LIMITATION OF ABSTRACT</b>		<b>18. NUMBER OF PAGES</b>
<b>a. REPORT</b> Unclassified	<b>b. ABSTRACT</b> Unclassified	<b>c. THIS PAGE</b> Unclassified	SAR		75
<b>19a. NAME OF RESPONSIBLE PERSON</b>				<b>19b. TELEPHONE NUMBER (include area code)</b>	