



PROPERTY OF
U.S. NATIONAL OCEANOGRAPHIC AND ATMOSPHERIC ADMINISTRATION
MIAMI LIBRARY
15 RICKENBACKER CIRCLE
MIAMI, FLORIDA, 33149

NAVENVPREDRSCHFAC
TECHNICAL REPORT
TR 80-03

BEST
AVAILABLE COPY

NAVENVPREDRSCHFAC TR 80-03

DETERMINATION OF THE PRIMARY SPECULAR POINT IN THE SUNGLINT PATTERN OF A POLAR-ORBITING SATELLITE IMAGE

Ted L. Tsui and Robert W. Fett
Naval Environmental Prediction Research Facility

AUGUST 1980

APPROVED FOR PUBLIC RELEASE
DISTRIBUTION UNLIMITED

BEST
AVAILABLE COPY



**NAVAL ENVIRONMENTAL PREDICTION RESEARCH FACILITY
MONTEREY, CALIFORNIA 93940**

QUALIFIED REQUESTORS MAY OBTAIN ADDITIONAL COPIES
FROM THE DEFENSE TECHNICAL INFORMATION CENTER.
ALL OTHERS SHOULD APPLY TO THE NATIONAL TECHNICAL
INFORMATION SERVICE.

UNCLASSIFIED

SECURITY CLASSIFICATION OF THIS PAGE (When Data Entered)

REPORT DOCUMENTATION PAGE		READ INSTRUCTIONS BEFORE COMPLETING FORM
1. REPORT NUMBER NAVENVPREDRSCHFAC Technical Report TR 80-03	2. GOVT ACCESSION NO.	3. RECIPIENT'S CATALOG NUMBER
4. TITLE (and Subtitle) Determination of the Primary Specular Point in the Sunlint Pattern of a Polar-Orbiting Satellite Image	5. TYPE OF REPORT & PERIOD COVERED Final	
	6. PERFORMING ORG. REPORT NUMBER	
7. AUTHOR(s) Ted L. Tsui and Robert W. Fett	8. CONTRACT OR GRANT NUMBER(s)	
9. PERFORMING ORGANIZATION NAME AND ADDRESS Naval Environmental Prediction Research Facility Monterey, CA 93940	10. PROGRAM ELEMENT, PROJECT, TASK AREA & WORK UNIT NUMBERS PE 62759N, PN 9F52561792 NEPRF WU 6.2-9	
11. CONTROLLING OFFICE NAME AND ADDRESS Naval Air Systems Command Department of the Navy Washington, DC 20361	12. REPORT DATE August 1980	
	13. NUMBER OF PAGES 26	
14. MONITORING AGENCY NAME & ADDRESS (if different from Controlling Office)	15. SECURITY CLASS. (of this report) UNCLASSIFIED	
	15a. DECLASSIFICATION/DOWNGRADING SCHEDULE	
16. DISTRIBUTION STATEMENT (of this Report) Approved for public release; distribution unlimited		
17. DISTRIBUTION STATEMENT (of the abstract entered in Block 20, if different from Report)		
18. SUPPLEMENTARY NOTES Original manuscript received in July 1980.		
19. KEY WORDS (Continue on reverse side if necessary and identify by block number) Sunlint Satellite imagery		
20. ABSTRACT (Continue on reverse side if necessary and identify by block number) A mathematical procedure for calculating the location of the primary specular point (PSP) in polar-orbiting satellite data is described in step-by-step detail. For purposes of this discussion, the PSP is defined as "that point on the great circle arc perpendicular to the satellite subpoint track passing through the satellite subpoint and the solar subpoint where the angle of incidence of the sun's rays on a horizontal plane (measured from the local zenith) is equal to the angle of reflection of the sun's rays to the satellite		

UNCLASSIFIED

SECURITY CLASSIFICATION OF THIS PAGE(When Data Entered)

20. ABSTRACT (Continued)

in space." The procedure can easily be developed into a small computer program that can be run on a minicomputer or on a programmable calculator.

UNCLASSIFIED

SECURITY CLASSIFICATION OF THIS PAGE(When Data Entered)

CONTENTS

1.	INTRODUCTION	1
2.	THEORETICAL CONSIDERATIONS	2
3.	SOURCES OF ERROR	6
4.	SAMPLE CALCULATION	7
5.	SUMMARY	9
	Appendix I: Laws of Sines and Cosines	11
	Appendix II: Sample Computation Procedures	12
	Distribution: p. 21	

1. INTRODUCTION

The reflective effects of sunlint must be considered during interpretation of satellite imagery because these effects frequently can be mistaken for clouds. Under conditions of uniform seas, the central and most brilliant sunlint reflectance emanates from what is termed the "primary specular point (PSP)"; ability to determine this point's location is fundamentally important to a thorough analysis of satellite data.

In relation to polar-orbiting satellite data, Fett and Mitchell (1977) define the PSP as "that point on the great circle arc perpendicular to the satellite subpoint track passing through the satellite subpoint and the solar subpoint where the angle of incidence of the sun's rays on a horizontal plane (measured from the local zenith) is equal to the angle of reflection of the sun's rays to the satellite in space."

Fett and Mitchell (1977) describe a method for locating the PSP in Defense Meteorological Satellite Program (DMSP) data by a graphical procedure that utilizes gnomonic charts and developed nomograms. This present study develops a more accurate mathematical procedure that can be applied to several operative satellite systems and can be translated conveniently into a simple computer program for running on a minicomputer or programmable calculator.

2. THEORETICAL CONSIDERATIONS

The problem of determining the location of the PSP in polar-orbiting satellite data can be solved easily by spherical trigonometry if the satellite subpoint track is assumed to be a great circle. Though this assumption will lead to some errors in locating the PSP, the magnitude of the errors will be small enough to be acceptable for practical purposes.

Figure 1 shows the geometrical aspects of one of the typical problem situations. If the satellite subpoint track is considered as a great circle, the PSP (point Q in Figure 1) can be found by locating the point X first.

Step 1:

Find the position of X, which is the point on the satellite subpoint track intersected by the great circle arc perpendicular to the satellite subpoint track and passing through the sub-solar point (SSP).

Consider spherical triangle ZPO:

$$OZ = 90^\circ$$

$$ZP = 90^\circ - \text{solar declination angle}$$

$$\angle OZP = \text{longitude of ascending node} - \text{longitude of SSP.}$$

According to the laws of sines and cosines (Appendix I),

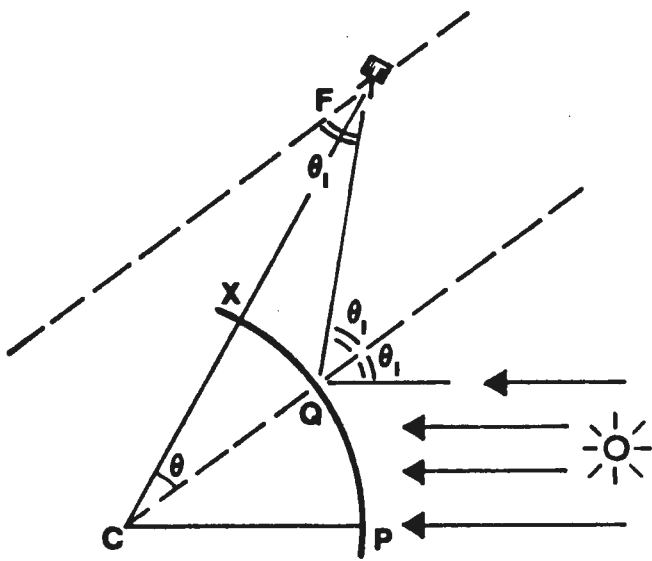
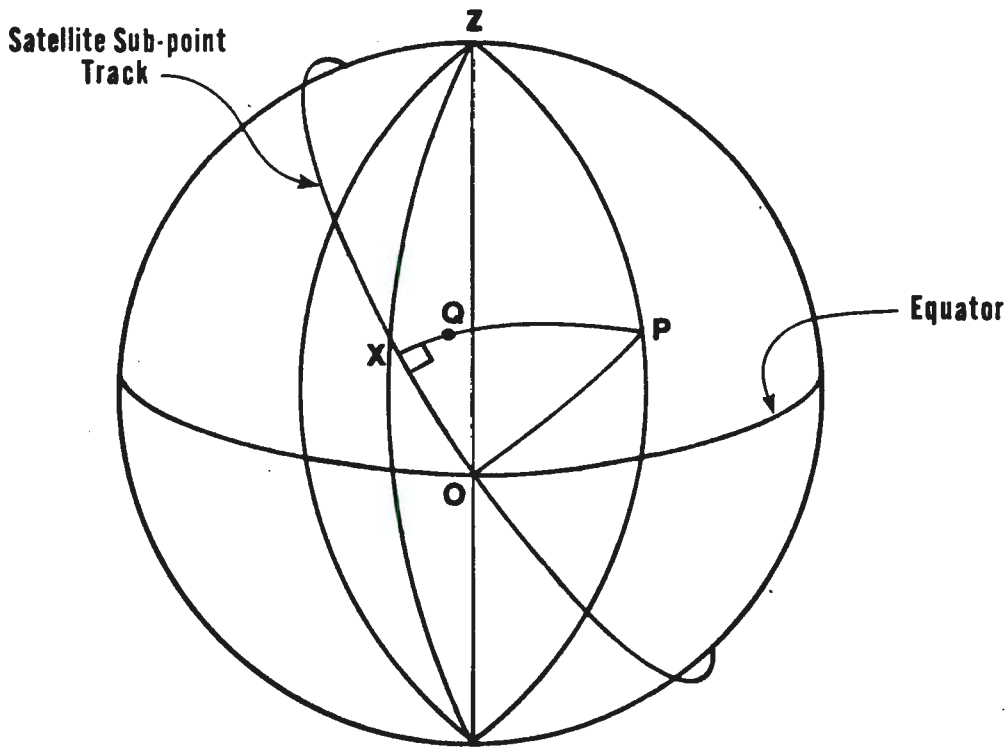
$$\cos PO = \cos OZ \cdot \cos ZP + \sin OZ \cdot \sin ZP \cdot \cos \angle OZP.$$

Since $\sin OZ \equiv 1$ and $\cos OZ \equiv 0$,

$$\cos PO = \sin ZP \cdot \cos \angle OZP$$

$$\sin \angle ZPO = \frac{\sin OZ}{\sin PO} \cdot \sin \angle OZP = \frac{\sin \angle OZP}{\sin PO}$$

$$\sin \angle POZ = \frac{\sin ZP}{\sin PO} \cdot \sin \angle OZP = \sin ZP \cdot \sin \angle ZPO.$$



- C= Center of the earth
- F= Satellite
- O= Equator crossing (ascending node)
- P= Sub-solar point (SSP)
- Q= Primary specular point (PSP)
- X= Point on trajectory of satellite subpoint track where arc \widehat{XP} is perpendicular to \widehat{OX}
- Z= North Pole
- θ = Angle sustaining the arc \widehat{XP}
- θ_1 = Incident angle

Figure 1. Geometrical aspects of determining PSP location in polar-orbiting satellite data.

Consider spherical triangle XPO:

$$\angle OXP \equiv 90^\circ$$

$$\angle POX = \text{satellite inclination angle} - (90^\circ - \angle POZ)$$

$$\sin XP = \sin PO \cdot \sin \angle POX$$

$$\sin OX = \tan XP \cdot \cot \angle POX$$

$$\cos \angle XPO = \cos OX \cdot \sin \angle POX.$$

Consider spherical triangle ZPX:

$$\angle ZPX = \angle ZPO - \angle XPO$$

$$\cos XZ = \cos PX \cdot \cos ZP + \sin PX \cdot \sin ZP \cdot \cos \angle ZPX$$

$$\sin \angle XZP = \frac{\sin PX}{\sin XZ} \cdot \sin \angle ZPX.$$

It can be seen in Figure 1 that the latitude of X = $90^\circ - XZ$ and that the longitude of X = longitude of SSP + $\angle XZP$. The above sequence provides the basis for determining the arc of XP which will be used in locating Q.

Step 2:

Find the position of the PSP (point Q in Figure 1):

$$\overline{CX} = \text{radius of the earth} \equiv R$$

$$\overline{XF} = \text{height of the satellite} \equiv H$$

$$\theta = \angle QX$$

$$\angle PCX = \angle PX$$

$$\theta_I \text{ (the incident angle)} = \angle PCX - \theta.$$

Consider plane triangle QCF:

$$\angle FQC = 180^\circ - \theta_I$$

$$\angle CFQ = 180^\circ - \angle FQC - \theta = \theta_I - \theta$$

$$\frac{R}{\sin \angle CFQ} = \frac{R + H}{\sin \angle FQC}$$

$$\frac{R}{\sin(\angle PCX - 2\theta)} = \frac{R + H}{\sin(\angle PCX - \theta)} .$$

Angle θ or arc QX can be found through iteration of the above equation.

Consider spherical triangle ZPQ:

$$PQ = PX - QX$$

$$\cos QZ = \cos PQ \cdot \cos ZP + \sin PQ \cdot \sin ZP \cdot \cos \angle ZPX$$

$$\sin \angle QZP = \frac{\sin PQ}{\sin QZ} \cdot \sin \angle ZPX .$$

It is obvious from Figure 1 that the latitude of Q = $90^\circ - QZ$, and that the longitude of Q = longitude of SSP + $\angle QZP$. Care should be taken in calculating the longitudes of points X and Q because of the changes in longitude designations between the Eastern and Western Hemispheres.

3. SOURCES OF ERROR

Aside from the assumption that the satellite subpoint track is a great circle arc, other sources of error should be considered:

a. The earth itself is not a perfect sphere.

b. The SSP is assumed to remain constant during the satellite pass through the area of sunglint.

c. The satellite inclination angle may vary from orbit to orbit by as much as $\sim \pm 1.5$ because of gravitational influences.

d. The height of the satellite may commonly vary by ± 35 km or more if the satellite is not launched in a perfectly circular orbit. During the approximate 15 min duration of the satellite pass through the area of sunglint, the error contributed by the great circle assumption would give the satellite inclination angle an additional variation of $\pm 2^\circ$. This would contribute, on the average, to a $\pm 1^\circ$ variation in latitude and $\pm .5^\circ$ variation in longitude in estimating the position of the PSP. Considering the uncertainties listed above, the great circle assumption for the satellite subpoint track appears to be quite reasonable.

4. SAMPLE CALCULATION

An actual example and sample calculation are provided to demonstrate the use of this technique in determining the location of the PSP; step-by-step computation is illustrated in Appendix II. Figure 2 is a DMSP satellite image for 22 August 1978. A sunglint pattern east of Hurricane Kristy is very apparent extending northward to the coast of California from the south at the bottom of the image. The satellite inclination angle for this example was assumed to be the normal 98.7° . The longitude of the ascending node for this pass was 113.5°W at 18:55:31 GMT. The latitude of the SSP at this time was 12.0°N and the longitude of the SSP was 103.8°W . As shown in the Appendix II, the latitude of X is estimated to be 10.5°N and longitude to be 115°W . Through the iteration scheme, θ is 1.2° . Finally, the latitude of PSP = 10.7°N and the longitude of the PSP = 113.9°W .

It can be seen in Figure 2 that this point is located under convective cloudiness of the intertropical convergence zone (ITCZ) near the center of the sunglint pattern. Sunglint reflection is not very bright in the region just north of this point, indicating that sea state in that area was not calm, but in fact rather rough, since this area should normally produce the brightest reflection.

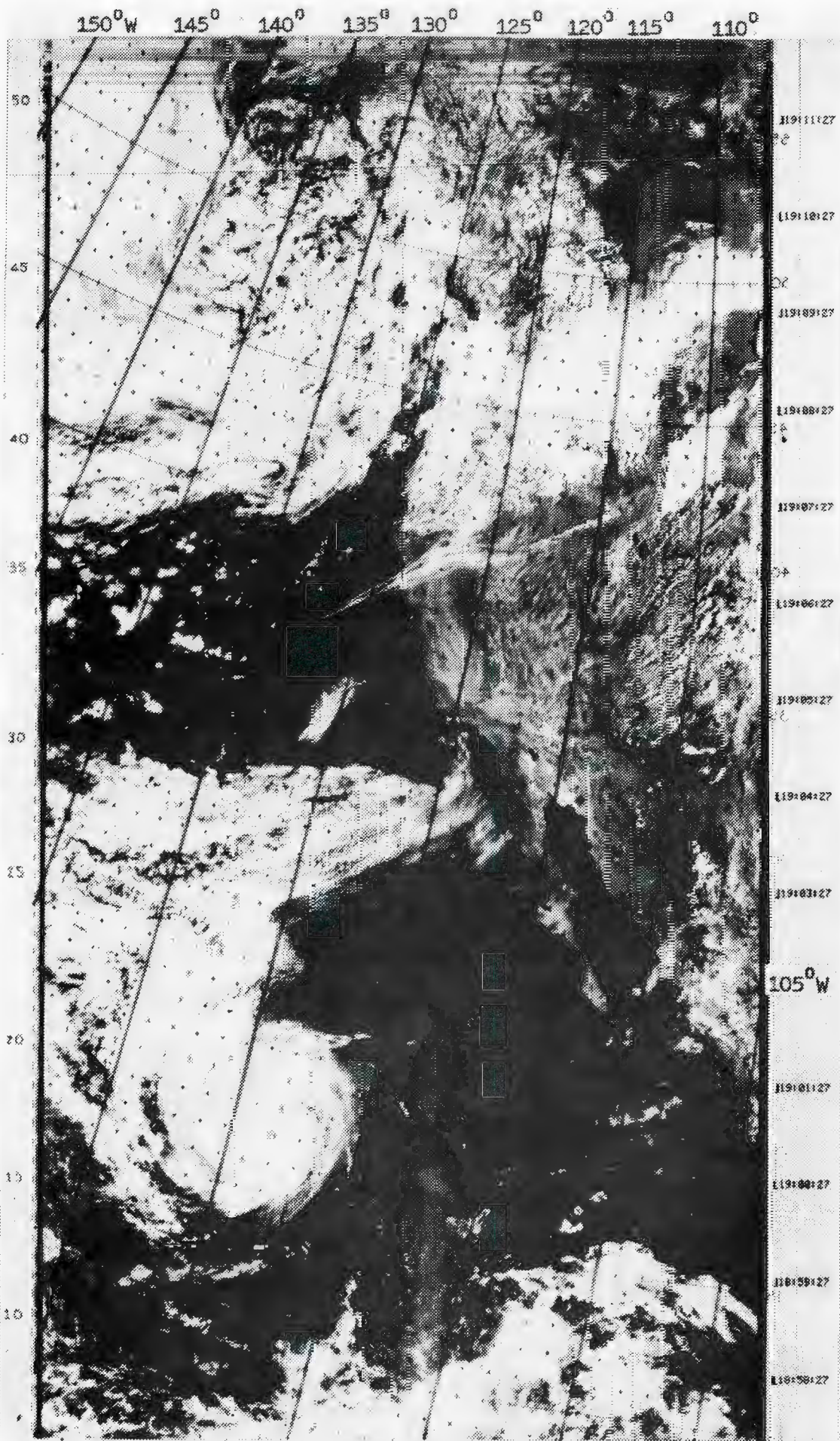


Figure 2. DMSP satellite image for 22 August 1978.

5. SUMMARY

A mathematical procedure for calculating the PSP in polar orbiting satellite data has been described. This procedure can be developed easily into a small computer program that can be run on a minicomputer (e.g., HP-9845) or a programmable calculator (e.g., TI-59); with only a few inputs, the PSP of the sunglint can be located routinely. The procedure provides a quantitative basis for this determination, which will be useful for research purposes and for practical application in field analysis. The computation scheme must be modified, however, if the scheme is to be used to locate the PSP during a satellite's descending pass or during the period when the sub-solar point is west of the satellite subpoint track.

REFERENCE

Fett, R. W., and W. Mitchell, 1977: Naval Tactical Applications Guide, Vol. 1: Techniques and Applications of Image Analysis. NEPRF Applications Report AR 77-03, DTIC AD No. B-024-969, 110 pp.

Page 16

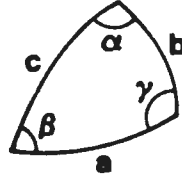
Intentionally left out of Document

APPENDIX I

LAWS OF SINES AND COSINES

1. The Law of Sines: In any spherical triangle, the sines of the sides are proportional to the sines of the respectively opposite angles:

$$\frac{\sin a}{\sin \alpha} = \frac{\sin b}{\sin \beta} = \frac{\sin c}{\sin \gamma}.$$



2. The Law of Cosines for Sides: In any spherical triangle, the cosine of any side is equal to the product of the cosines of the other two sides plus the product of the sines of those sides times the cosine of their included angle:

$$\cos a = \cos b \cos c + \sin b \sin c \cos \alpha,$$

$$\cos b = \cos c \cos a + \sin c \sin a \cos \beta,$$

$$\cos c = \cos a \cos b + \sin a \sin b \cos \gamma.$$

3. The Napier's Rules for a Right Spherical Triangle:

$$\sin a = \sin c \sin \alpha,$$

$$\sin a = \tan b \cot \beta,$$

$$\sin b = \sin c \sin \beta,$$

$$\sin b = \tan a \cot \alpha,$$

$$\cos c = \cot \alpha \cot \beta,$$

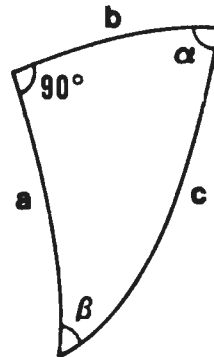
$$\cos c = \cos a \cos b,$$

$$\cos \alpha = \cos a \sin \beta,$$

$$\cos \alpha = \tan b \cot c,$$

$$\cos \beta = \cos b \sin \alpha,$$

$$\cos \beta = \tan a \cot c.$$



APPENDIX II
SAMPLE COMPUTATION PROCEDURES

Before the PSP can be calculated, several background parameters must be determined:

1. Find SD (solar declination angle). This angle can be found according to the day of year in the Smithsonian Tables.
2. Find LN (longitude of equator crossing).
3. Find TN (time of equator crossing). LN and TN usually appear on the satellite image itself.
4. Find LTN (solar longitude). $LTN = (TN-12)*15$, if $TN > 12$.
 $LTN = (TN-12)*15 + 180$, if $TN < 12$.
5. Find SI (satellite inclination angle). This is treated as a constant for a given satellite.
6. Find R (average radius of the earth).
7. Find H (average height of the satellite).

A suggested computation sheet and the actual computation steps for the 22 August 1978 case are provided. Because the style of the computation steps is very similar to that of a computer program or a programmable calculator program, the entire computation scheme can be transformed easily into a program for an available machine. All units for arcs and angles are in degrees.

(Suggested Computation Sheet)

Case: _____

Date: _____

a. INPUT (Background Parameters)

1. SD =

2. LN =

3. TN =

4. LTN =

5. SI =

6. R =

7. H =

b. Memory Block:

1. $\sin ZP =$

2. $\cos ZP =$

3. $\sin P0 =$

4. $\text{angle } ZP0 =$

5. $\sin POX =$

6. $\text{arc } XP = \text{arc } PX =$

7. $\sin XP = \sin PX =$

8. $\cos XP = \cos PX =$

9. $\sin ZPX =$

10. $\cos ZPX =$

11. $\sin PQ =$

c. In Spherical triangle ZP0

1. $\text{arc } ZP = 90 - SD =$

(calculate $\sin ZP$ and $\cos ZP$ and put them in the memory block)

2. $\text{angle } OZP = LN - LTN =$

3. $\cos P_0 = \sin ZP \cdot \cos OZP = X =$

$\text{arc } P_0 = \cos^{-1} X =$

calculate $\sin P_0$ and put it in the memory block

4. $\sin ZP_0 = \frac{\sin OZP}{\sin P_0} = Y =$

angle ZP_0 (either in first or second quadrant) =

select ZP_0 and put it in the memory block

5. $\sin P_0Z = \sin ZP \cdot \sin ZP_0 =$

angle $P_0Z =$

d. In Spherical Triangle XP_0

1. angle $P_0X = SI - (90 - P_0Z) =$

calculate $\sin P_0X$ and put it in the memory block

2. $\sin XP = \sin P_0 \cdot \sin P_0X =$

arc $XP =$

calculate $\cos XP$ and put $\sin XP$, $\cos XP$, and arc XP in the memory block

3. $\sin OX = \tan XP \cdot \cot P_0X =$

arc $OX =$

4. $\cos XP_0 = \cos OX \cdot \sin P_0X =$

arc $XP_0 =$

e. In Spherical Triangle ZPX

1. $ZPX = ZP_0 - XP_0 =$

calculate $\sin ZPX$ and $\cos ZPX$ and put them in the memory block

2. $\cos XZ = \cos PX \cdot \cos ZP + \sin PX \cdot \sin ZP \cdot \cos ZPX =$

arc $XZ =$

3. $\sin XPZ = \frac{\sin PX}{\sin XZ} =$

angle $XPZ =$

4. latitude of $X = 90 - XZ =$

longitude of $X = LTN + XZP =$

f. In Plane Triangle FCQ

1. angle PCX = arc PX =

2. Let res be the residual term in the iteration scheme,

$$\text{then } \text{res} = \frac{\sin(PCX - 2\theta)}{\sin(PCX - \theta)} - \frac{R}{R + H}$$

3. Assume $\theta = \theta_1 =$, $\text{res}_1 = \frac{\sin(PCX - 2\theta_1)}{\sin(PCX - \theta_1)} - \frac{R}{R + H} =$

$\theta = \theta_2 =$, $\text{res}_2 = \frac{\sin(PCX - 2\theta_2)}{\sin(PCX - \theta_2)} - \frac{R}{R + H} =$

$\theta = \theta_3 =$, $\text{res}_3 =$

$\theta = \theta_4 =$, $\text{res}_4 =$

$\theta = \theta_5 =$, $\text{res}_5 =$

$\theta = \theta_6 =$, $\text{res}_6 =$

$\theta = \theta_7 =$, $\text{res}_7 =$

.
. .
. . .

$\theta = \theta_n =$, $\text{res}_n =$

4. Select θ_k , where the absolute value of res_k is the smallest.

5. arc XQ = $\theta = \theta_k =$

g. In Spherical Triangle ZPQ

1. $\text{arc PQ} = \text{PX} - \text{QX} =$

calculate $\sin \text{PQ}$ and put it in the memory block

2. $\cos \text{QZ} = \cos \text{PQ} \cdot \cos \text{ZP} + \sin \text{PQ} \cdot \sin \text{ZP} \cdot \cos \text{ZPX} =$

$\text{arc QZ} =$

3. $\sin \text{QZP} = \frac{\sin \text{PQ}}{\sin \text{QZ}} \cdot \sin \text{ZPX} =$

$\text{arc QZP} =$

4. latitude of PSP (point C) = $90 - \text{QZ} =$

longitude of PSP (point Q) = $\text{LTN} + \text{QZP} =$

(Suggested Computation Sheet, Data of 22 August 1978)

Case: DMSP Visible

Date: August 22, 1978

a. INPUT (Background Parameters)

1. SD = 12.0
2. LN = 113.5 W
3. TN = 18:55:31Z = 18.92Z
4. LTN = (18.92-12) x 15 = 103.8W
5. SI = 98.7
6. R = 6370 km
7. H = 833 km

b. Memory Block:

1. sin ZP = 0.97814
2. cos ZP = 0.20791
3. sin P0 = 0.26556
4. angle ZP0 = 140.7
5. sin POX = 0.73135
6. arc XP = arc PX = 11.2
7. sin XP = sin PX = 0.19422
8. cos XP = cos PX = 0.98096
9. sin ZPX = 0.99317
10. cos ZPX = -0.11667
11. sin PQ = 0.17365

c. In Spherical Triangle ZP0

1. arc ZP = 90 - SD = 78.0
(calculate sin ZP and cos ZP and put them in the
memory block)

2. angle OZP = LN - LTN = 113.5 - 103.8 = 9.7
3. $\cos P_0 = \sin ZP \cdot \cos OZP = X = 0.96416$
calculate $\sin P_0$ and put it in the memory block

4. $\sin ZP_0 = \frac{\sin OZP}{\sin P_0} = Y = 0.63447$
angle ZP₀ (either in first or second quadrant)
= 39.3 or 140.7
select ZP₀ and put it in the memory block

5. $\sin P_0Z = \sin ZP \cdot \sin ZP_0 = 0.62060$
angle P₀Z = 38.3

d. In Spherical Triangle XP₀

1. angle P₀X = SI - (90 - P₀Z) = 98.7 - (90-38.3) = 47.0
calculate $\sin P_0X$ and put it in the memory block

2. $\sin XP = \sin P_0 \cdot \sin P_0X = 0.19422$
arc XP = 11.2

calculate $\cos XP$ and put $\sin XP$, $\cos XP$, and arc XP in the memory block

3. $\sin OX = \tan XP \cdot \cot P_0X = 0.18465$
arc OX = 10.6

4. $\cos XP_0 = \cos OX \cdot \sin P_0X = 0.71887$
arc XP₀ = 44.0

e. In Spherical Triangle ZPX

1. ZPX = ZP₀ - XP₀ = 140.7-44.0 = 96.7
calculate $\sin ZPX$ and $\cos ZPX$ and put them in the memory block

2. $\cos XZ = \cos PX \cdot \cos ZP + \sin PX \cdot \sin ZP \cdot \cos ZPX$
= 0.18179

arc XZ = 79.5

$$3. \quad \sin XPZ = \frac{\sin PX}{\sin XZ} = 0.19753$$

$$\text{angle } XPZ = 11.4$$

$$4. \quad \text{latitude of } X = 90 - XZ = 90 - 79.5 = 10.5 \text{ N}$$

$$\text{longitude of } X = \text{LTN} + XZP = 103.8 + 11.4 = 115.2\text{W}$$

f. In Plane Triangle FCQ

$$1. \quad \text{angle } PCX = \text{arc } PX = 11.2$$

2. Let res be the residual term in the iteration scheme,

$$\text{then } \text{res} = \frac{\sin(PCX - 2\theta)}{\sin(PCX - \theta)} - \frac{R}{R + H}$$

$$3. \quad \text{Assume } \theta = \theta_1 = 0.9, \quad \text{res}_1 = \frac{\sin(PCX - 2\theta_1)}{\sin(PCX - \theta_1)} - \frac{R}{R + H} = 0.02912$$

$$\theta \quad \theta_2 = 1.0, \quad \text{res}_2 = \frac{\sin(PCX - 2\theta_2)}{\sin(PCX - \theta_2)} - \frac{R}{R + H} = 0.01845$$

$$\theta \quad \theta_3 = 1.1, \quad \text{res}_3 = \frac{\sin 9.0}{\sin 10.1} - 0.88435 = 0.00769$$

$$\theta \quad \theta_4 = 1.2, \quad \text{res}_4 = 0.00335$$

$$\theta \quad \theta_5 = 1.3, \quad \text{res}_5 = -0.01461$$

$$\theta \quad \theta_6 = 1.4, \quad \text{res}_6 = -0.02609$$

$$\theta \quad \theta_7 = 1.5, \quad \text{res}_7 = -0.03783$$

. . .

$$\theta = \theta_n = \quad , \quad \text{res}_n =$$

4. Select θ_k , where the absolute value of res_k is the smallest.

5. $\text{arc XQ} = \theta = \theta_k = \theta_4 = 1.2$

g. In Spherical Triangle ZPQ

1. $\text{arc PQ} = \text{PX} - \text{QX} = 11.2 - 1.2 = 10.0$

calculate $\sin \text{PQ}$ and put it in the memory block

2. $\cos \text{QZ} = \cos \text{PQ} \cdot \cos \text{ZP} + \sin \text{PQ} \cdot \sin \text{ZP} \cdot \cos \text{ZPX}$
 $= 0.18493$

$\text{arc QZ} = 79.3$

3. $\sin \text{QZP} = \frac{\sin \text{PQ}}{\sin \text{QZ}} \cdot \sin \text{ZPX} = 0.17549$

$\text{arc QZP} = 10.1$

4. latitude of PSP (point Q) = $90 - \text{QZ} = 90 - 79.3 = 10.7\text{N}$

longitude of PSP (point Q) = $\text{LTN} + \text{QZP} =$

$103.8 + 10.1 = 113.9\text{W}$

Distribution List

COMMANDING OFFICER
USS AMERICA (CV-66)
ATTN: METEOROLOGICAL OFFICER
FPO NEW YORK 09531

COMMANDING OFFICER
USS FORRESTAL (CV-59)
ATTN: METEOROLOGICAL OFFICER
FPO MIAMI 34080

COMMANDING OFFICER
USS INDEPENDENCE (CV-62)
ATTN: METEOROLOGICAL OFFICER
FPO NEW YORK 09537

COMMANDING OFFICER
USS JOHN F. KENNEDY (CV-67)
ATTN: METEOROLOGICAL OFFICER
FPO NEW YORK 09538

COMMANDING OFFICER
USS NIMITZ (CVN-68)
ATTN: METEOROLOGICAL OFFICER
FPO NEW YORK 09542

COMMANDING OFFICER
USS DWIGHT D. EISENHOWER (CVN-69)
ATTN: METEOROLOGICAL OFFICE
FPO NEW YORK 09532

COMMANDING OFFICER
USS SARATOGA (CV-60)
ATTN: METEOROLOGICAL OFFICER
FPO NEW YORK 09587

COMMANDING OFFICER
USS CONSTELLATION (CV-64)
ATTN: METEOROLOGICAL OFFICER
FPO SAN FRANCISCO 96635

COMMANDING OFFICER
USS CORAL SEA (CV-43)
ATTN: METEOROLOGICAL OFFICER
FPO SAN FRANCISCO 96632

COMMANDING OFFICER
USS ENTERPRISE (CVN-65)
ATTN: METEOROLOGICAL OFFICER
FPO SAN FRANCISCO 96636

COMMANDING OFFICER
USS KITTY HAWK (CV-63)
ATTN: METEOROLOGICAL OFFICER
FPO SAN FRANCISCO 96634

COMMANDING OFFICER
USS MIDWAY (CV-41)
ATTN: METEOROLOGICAL OFFICER
FPO SAN FRANCISCO 96631

COMMANDING OFFICER
USS RANGER (CV-61)
ATTN: METEOROLOGICAL OFFICER
FPO SAN FRANCISCO 96633

DET. 2, HQ, AWS
THE PENTAGON
WASHINGTON, DC 20330

NAVAL DEPUTY TO THE ADMINISTRATOR
NATIONAL OCEANIC & ATMOSPHERIC ADMIN.
ROOM 200, PAGE BLDG. #1
3300 WHITEHAVEN ST. NW
WASHINGTON, DC 20235

OFFICER IN CHARGE
NAVAL OCEANOGRAPHY COMMAND DET.
AIR FORCE GLOBAL WEATHER CENTRAL
OFFUTT AFB, NE 68113

COMMANDING OFFICER
NAVAL RESEARCH LAB
ATTN: LIBRARY, CODE 2620
WASHINGTON, DC 20390

COMMANDING OFFICER
OFFICE OF NAVAL RESEARCH
EASTERN/CENTRAL REGIONAL OFFICE
BLDG 114 SECT. D
666 SUMMER ST.
BOSTON, MA 02210
COMMANDING OFFICER
OFFICE OF NAVAL RESEARCH
1030 E. GREEN STREET
PASADENA, CA 91101

OFFICE OF NAVAL RESEARCH
SCRIPPS INSTITUTION OF OCEANOGRAPHY
LA JOLLA, CA 92037

COMMANDING OFFICER
NAVAL OCEAN RESEARCH & DEVELOPMENT ACTIVITY
CODE 101
NSIL STATION
BAY ST. LOUIS, MS 39529

COMMANDING OFFICER
FLEET INTELLIGENCE CENTER EUROPE & ATLANTIC
NORFOLK, VA 23511

COMMANDING OFFICER
FLEET INTELLIGENCE CENTER, PACIFIC
PEARL HARBOR, HI 96860

SUPERINTENDENT
LIBRARY ACQUISITIONS
U.S. NAVAL ACADEMY
ANNAPOLIS, MD 21402

COMMANDER
NAVAL OCEANOGRAPHY COMMAND
NSTL STATION
BAY ST LOUIS, MS 39529

PRESIDENT
NAVAL WAR COLLEGE
NEWPORT, RI 02840
(ATTN: LCDR M. E. GIBBS)

COMMANDING OFFICER
FLEET NUMERICAL OCEANOGRAPHY CENTER
MONTEREY, CA 93940

COMMANDER (2)
NAVAL AIR SYSTEMS COMMAND HEADQUARTERS
ATTN: LIBRARY (AIR-954)
WASHINGTON, DC 20361

COMMANDING OFFICER
FLEET NUMERICAL OCEANOGRAPHY CENTER
GEOPHYSICS TACTICAL READINESS LAB (GTRL)
MONTEREY, CA 93940

COMMANDER
NAVAL AIR SYSTEMS COMMAND HDQ (AIR-370)
WASHINGTON, DC 20361

COMMANDING OFFICER
NAVAL WESTERN OCEANOGRAPHY CENTER
BOX 113
PEARL HARBOR, HI 96860

COMMANDER NAVAL AIR SYSTEMS COMMAND
METEOROLOGICAL SYSTEMS DIV. (AIR-553)
WASHINGTON, DC 20360

COMMANDING OFFICER
NAVAL EASTERN OCEANOGRAPHY CENTER
MCADIE BLDG. (U-117)
NAVAL AIR STATION
NORFOLK, VA 23511

COMMANDER
EARTH & PLANETARY SCIENCES, CODE 3918
NAVAL WEAPONS CENTER
CHINA LAKE, CA 93555

COMMANDING OFFICER
NAVAL POLAR OCEANOGRAPHY CENTER
NAVY DEPT.
4301 SUTLAND RD.
WASHINGTON, DC 20390

NAVAL SPACE SYSTEMS ACTIVITY
CODE 60
P.O. BOX 92960
WORLDWAY POSTAL CENTER
LOS ANGELES, CA 90009
A B-3&4 C-1&2 D
DIRECTOR
NAVY SCIENCE ASSISTANCE PROGRAM
NAVSURFWACEN, WHITE OAKS
SILVER SPRING, MD 20910

COMMANDING OFFICER
U.S. NAVAL OCEANOGRAPHY COMMAND CENTER
BOX 12
COMNAVMAIANAS
FPO SAN FRANCISCO 96630

COMMANDER
PACIFIC MISSILE TEST CENTER
ATTN: GEOPHYSICS OFFICER (CODE 3250)
PT. MUXU, CA 93042

COMMANDING OFFICER
U.S. NAVAL OCEANOGRAPHY COMMAND CENTER
BOX 31
FPO NEW YORK 09540

CHIEF OF NAVAL EDUCATION & TRAINING
NAVAL AIR STATION
PENSACOLA, FL 32508

COMMANDING OFFICER
NAVAL OCEANOGRAPHY COMMAND FACILITY
NAVAL AIR STATION, NORTH ISLAND
SAN DIEGO, CA 92135

DEPARTMENT OF METEOROLOGY
NAVAL POSTGRADUATE SCHOOL
MONTEREY, CA 93940

COMMANDING OFFICER
U.S. NAVAL OCEANOGRAPHY COMMAND FACILITY
FPO SEATTLE 98762

DEPARTMENT OF OCEANOGRAPHY
NAVAL POSTGRADUATE SCHOOL
MONTEREY, CA 93940

WEATHER SERVICE OFFICER
OPERATIONS CODE 16
MARINE CORPS AIR STATION
BEAUFORT, SC 29902

COMMANDER
AWS/DN
SCOTT AFB, IL 62225

USAFETAC/CBT
SCOTT AFB, IL 62225

3350TH TECHNICAL
TRAINING GROUP
TTGU-W/STOP 623
CHANUTE AFB, IL 61868

AFGWC/DAPL
OFFUTT AFB, NE 68113

3 WW/DN
OFFUTT AFB, NE 68113

AFGL/LY
HANSCOM AFB, MA 01731

AFGL/OPI
HANSCOM AFB, MA 01731

2 WS/DR
ANDREWS AFB, MD 20334

5WW/DN
LANGLEY AFB, VA 23665

OFFICER IN CHARGE
SERVICE SCHOOL COMMAND, GREAT LAKES
DETACHMENT CHANUTE/STOP 62
CHANUTE AFB, IL 61868

1ST WEATHER WING (DON)
HICKAM AFB, HI 96853

DET 4 HQ AWS/CC
APO SAN FRANCISCO 96334

DET 5 1WW/CC
APO SAN FRANCISCO 96274

DET 8, 30 WS
APO SAN FRANCISCO 96239

DET 18, 30 WS
APO SAN FRANCISCO 96301

HQ SAC/DDWA
OFFUTT AFB, NE 68113

AFDSR/NC
BOLLING AFB
WASHINGTON, DC 20312

COMMANDER & DIRECTOR
ATTN: DELAS-DM-A
U.S. ARMY ATMOS. SCIENCES LAB
WHITE SANDS MISSILE RANGE,
NM 88002

DIRECTOR (12)
DEFENSE TECHNICAL INFORMATION CENTER
CAMERON STATION
ALEXANDRIA, VA 22314

DIRECTOR OFFICE OF ENV. & LIFE SCIENCES
OFFICE OF THE UNDERSECRETARY OF DEFENSE FOR
RESEARCH AND ENGINEERING (E&E)
ROOM 3D129
THE PENTAGON
WASHINGTON, DC 20301
DIRECTOR
TECHNICAL INFORMATION
DEFENSE ADVANCED RESEARCH PROJECTS AGENCY
1400 WILSON BLVD
ARLINGTON, VA 22209

DIRECTOR
SYSTEMS DEVELOPMENT
NATIONAL WEATHER SERVICE, NOAA
ROOM 1216 - THE GRAMAX BLDG
8060 13TH STREET
SILVER SPRING, MD 20910

DIRECTOR
NATIONAL ENV. SAT. SERV./SEL
FB-4, S321B
SUITLAND, MD 20233

NATIONAL OCEANIC & ATMOSPHERIC ADMIN.
OCEANOGRAPHIC SERVICES DIV.
6010 EXECUTIVE BLVD.
ROCKVILLE, MD 20852

FEDERAL COORDINATOR FOR METEOROLOGICAL
SERVICES & SUPPORTING RESEARCH
6010 EXECUTIVE BLVD
ROCKVILLE, MD 20852

NATIONAL WEATHER SERVICE
WORLD WEATHER BLDG.
RM 307
5200 ALTH ROAD
CAMP SPRINGS, MD 20023

NATIONAL WEATHER SERVICE, EASTERN REGION
ATTN: WFE3
585 STEWART AVENUE
GARDEN CITY, NY 11530

CHIEF, SCIENTIFIC SERVICES
NATIONAL WEATHER SERVICE, CENTRAL REGION
NOAA, ROOM 1836
601 EAST 12TH STREET
KANSAS CITY, MO 64106

CHIEF, SCIENTIFIC SERVICES
NATIONAL WEATHER SERVICE, SOUTHERN REGION
NOAA, ROOM 10E09
819 TAYLOR STREET
FT. WORTH, TX 76102

CHIEF, SCIENTIFIC SERVICES
NATIONAL WEATHER SERVICE, WESTERN REGION
NOAA
P.O. BOX 11188, FEDERAL BLDG
SALT LAKE CITY, UT 84111

CHIEF, SCIENTIFIC SERVICES
NATIONAL WEATHER SERVICE, PACIFIC REGION
P.O. BOX 50027
HONOLULU, HI 96850

DIRECTOR
ATLANTIC OCEANOGRAPHIC & METEOR. LABS.
15 RICKENBACKER CAUSEWAY
VIRGINIA KEY
MIAMI, FL 33149

NATIONAL MARINE FISHERIES SERVICE
OCEAN CLIMATOLOGY PROJECT
SOUTHWEST FISHERIES CENTER
P.O. BOX 271
LA JOLLA, CA 92037

HEAD, ATMOSPHERIC SCIENCES DIV.
NATIONAL SCIENCE FOUNDATION
1800 G STREET, N.W.
WASHINGTON, DC 20550

DIRECTOR
DIVISION OF ATMOSPHERIC SCIENCES
NATIONAL SCIENCE FOUNDATION
ROOM 664
1800 G STREET, NW
WASHINGTON, DC 20550
LABORATORY FOR ATMOSPHERIC SCIENCES
NASA GODDARD SPACE FLIGHT CENTER
GREENBELT, MD 20771

PRELIMINARY SYSTEMS DESIGN GROUP
NASA GODDARD SPACE FLIGHT CENTER
GREENBELT, MD 20771

DEPARTMENT OF ATMOSPHERIC SCIENCES
ATTN: LIBRARIAN
COLORADO STATE UNIVERSITY
FORT COLLINS, CO 80521

CHAIRMAN
DEPARTMENT OF METEOROLOGY
PENNSYLVANIA STATE UNIVERSITY
503 DEIKE BLDG
UNIVERSITY PARK, PA 16802

CHAIRMAN
DEPARTMENT OF METEOROLOGY
MASSACHUSETTS INSTITUTE OF TECHNOLOGY
CAMBRIDGE, MA 02139

ATMOSPHERIC SCIENCES DEPT.
UNIVERSITY OF CHICAGO
1100 E. 57TH STREET
CHICAGO, IL 60637

ATMOSPHERIC SCIENCES DEPT.
UNIVERSITY OF WASHINGTON
SEATTLE, WA 98195

ENVIRONMENTAL SCIENCES DEPT.
FLORIDA STATE UNIVERSITY
TALLAHASSEE, FL 32305

DEPT. OF METEOROLOGY & OCEANOGRAPHY
POLYTECHNIC INSTITUTE OF NEW YORK
333 JAY STREET
BROOKLYN, NY 11201

DEPT. OF ATMOSPHERIC SCIENCES LIBRARY
COLORADO STATE UNIVERSITY
FOOTHILLS CAMPUS
FT. COLLINS, CO 80523

DEPARTMENT OF METEOROLOGY
UNIVERSITY OF HAWAII
2525 CORREA ROAD
HONOLULU, HI 96822

DEPT OF METEOROLOGY
UNIVERSITY OF MARYLAND
COLLEGE PARK, MD 20742

CHAIRMAN
DEPARTMENT OF METEOROLOGY
UNIVERSITY OF WISCONSIN
METEOROLOGY AND SPACE SCIENCE BLDG.
1225 WEST DAYTON STREET
MADISON, WI 53706

THE WALTER A. BOHAN CO.
2026 OAKTON STREET
PARK RIDGE, IL 60068

DIRECTOR
REMOTE SENSING LAB
P.O. BOX 248003
UNIVERSITY OF MIAMI
CORAL GABLES, FL 33124

METEOROLOGY INTERNATIONAL, INC.
2600 GARDEN RD.
MONTEREY, CA 93940

DEPARTMENT OF METEOROLOGY
TEXAS A & M UNIVERSITY
COLLEGE STATION, TX 77843

OCEAN DATA SYSTEMS INC.
2460 GARDEN ROAD
MONTEREY, CA 93940

DIRECTOR OF RESEARCH
INSTITUTE FOR STORM RESEARCH
UNIVERSITY OF ST. THOMAS
3812 MONTROSE BLVD.
HOUSTON, TX 77006

NAUTILUS PRESS, INC.
1056 NATIONAL PRESS BLDG.
WASHINGTON, DC 20045

CHAIRMAN
DEPARTMENT OF METEOROLOGY
CALIFORNIA STATE UNIVERSITY, SAN JOSE
SAN JOSE, CA 95192

THE EXECUTIVE DIRECTOR
AMERICAN METEOROLOGICAL SOCIETY
45 BEACON STREET
BOSTON, MA 02108

CHAIRMAN
DEPARTMENT OF METEOROLOGY & PHYSICS
UNIVERSITY OF FLORIDA
215 PHYSICS BLDG
GAINESVILLE, FL 32601

AMERICAN MET. SOCIETY
METEOROLOGICAL & GEOSTROPHICAL ABSTRACTS
P.O. BOX 1736
WASHINGTON, DC 20013

DOCUMENTS/REPORTS SECTION
LIBRARY
SCRIPPS INSTITUTION OF OCEANOGRAPHY
LA JOLLA, CA 92037

DIRECTOR, JTWC
BOX 17
FPO SAN FRANCISCO 96630

R.S.M.A.S. LIBRARY
UNIVERSITY OF MIAMI
4600 RICKENBACKER CAUSEWAY
VIRGINIA KEY
MIAMI, FL 33149

LIBRARIAN
METEOROLOGY DEPT.
UNIVERSITY OF MELBOURNE
PARKVILLE, VICTORIA 3052
AUSTRALIA

LIBRARY
CSIRO DIV.
ATMOSPHERIC PHYSICS
STATION STREET
ASPENDALE, 3195
VICTORIA, AUSTRALIA

BEST
AVAILABLE COPY

BUREAU OF METEOROLOGY
ATTN: ASST. DIRECTOR OF RESEARCH
BOX 1289K, GPO
MELBOURNE, VIC, 3001
AUSTRALIA

CHAIRMAN
DEPARTMENT OF METEOROLOGY
MCGILL UNIVERSITY
805 SHERBROOKE ST. W.
MONTREAL, QUEBEC
CANADA H3A 2K6

INSTITUTE OF OCEANOGRAPHY
UNIVERSITY OF BRITISH COLUMBIA
VANCOUVER BC, CANADA V6T-1W5

DIRECTOR OF NAVAL OCEANOGRAPHY & METEOR.
MINISTRY OF DEFENCE
OLD WAR OFFICE BLDG
LONDON, S.W.1. ENGLAND

METEOROLOGICAL OFFICE LIBRARY
LONDON ROAD
BRACKNELL, BERKSHIRE
RG 12 2SZ
ENGLAND

EUROPEAN SPACE AGENCY
METEOROLOGICAL PROGRAM DEPT.
TOULOUSE, FRANCE
ATTN: DR. J.P. ANTIKIDES

EUROPEAN SPACE AGENCY
EUROPEAN SPACE OPERATIONS CENTER
DARMSTADT
FEDERAL REPUBLIC OF GERMANY
ATTN: DR. JOHN MORGAN

THE DEPUTY DIRECTOR GENERAL OF
METEOROLOGY
(CLIMATOLOGY & GEOPHYSICS)
INDIA METEOROLOGICAL DEPT.
PUNE 411-005
INDIA

JAPAN METEOROLOGICAL AGENCY
3-4, OTEMACHI 1-CHOME, CHIYODA-KU
TOKYO 100, JAPAN

KONINKLIJK NEDERLANDS
METEOROLOGISCH INSTITUUT
POSTBUS 201
3730 AE DEBILT
NETHERLANDS

DEPARTMENT OF ATMOSPHERIC SCIENCE
NATIONAL TAIWAN UNIVERSITY
TAIPEI, TAIWAN 107

BEST
AVAILABLE COPY