

AD-A031 499

TRI-CON ASSOCIATES INC CAMBRIDGE MASS

F/G 9/5

ELECTRONIC SUBSYSTEM FOR NORMAL INCIDENCE ULTRAVIOLET SPECTROME--ETC(U)

SEP 76 R S HILLS

F19628-74-C-0001

UNCLASSIFIED

C-129

AFGL-TR-76-0206

NL

1 of 1
ADA031499

SEP 76



END

DATE
FILMED
12 - 76

(12)

AFGL-TR-76-0206

AD A031499

ELECTRONIC SUBSYSTEM FOR NORMAL
INCIDENCE ULTRAVIOLET SPECTROMETER

Robert S. Hills

390416

TRI-CON ASSOCIATES, INC.
765 Concord Avenue
Cambridge, Massachusetts 02138

September 10, 1976

Final Report: Period Covered
1 September 1973 to 30 June 1976

Approved for Public Release Distribution Unlimited

AIR FORCE GEOPHYSICS LABORATORY
AIR FORCE SYSTEMS COMMAND
UNITED STATES AIR FORCE
HANSCOM AFB, MASSACHUSETTS 01731

Copy available to DDC does not
permit fully legible reproduction

DDC
RECEIVED
NOV 3 1976
B

Qualified requestors may obtain additional copies from the Defense Documentation Center. All others should apply to the National Technical Information Service

UNCLASSIFIED

SECURITY CLASSIFICATION OF THIS PAGE (When Data Entered)

III 1011

REPORT DOCUMENTATION PAGE		READ INSTRUCTIONS BEFORE COMPLETING FORM
1. REPORT NUMBER AFGI-TR-76-0206	2. GOVT ACCESSION NO.	3. REPORT'S CATALOG NUMBER
4. TITLE (and Subtitle) ELECTRONIC SUBSYSTEM FOR NORMAL INCIDENCE ULTRAVIOLET SPECTROMETER.	5. TYPE OF REPORT & PERIOD COVERED Final Report; 1 September 1973 - 30 June 1976	
7. AUTHOR(s) Robert S. Hills	8. CONTRACT OR GRANT NUMBER(s) C-129	9. PERFORMING ORG. REPORT NUMBER F19628-74-C-0001
9. PERFORMING ORGANIZATION NAME AND ADDRESS TRI-CON ASSOCIATES, INC. 765 Concord Avenue Cambridge, Massachusetts 02138	10. PROGRAM ELEMENT, PROJECT, TASK AREA & WORK UNIT NUMBERS 62101F 66880601	
11. CONTROLLING OFFICE NAME AND ADDRESS Air Force Geophysics Laboratory Hanscom AFB, Massachusetts 01731 Contract Monitor: Charles W. Chagnon/LKO	12. REPORT DATE September 1, 1976	
14. MONITORING AGENCY NAME & ADDRESS (if different from Controlling Office) 12 33p.	13. NUMBER OF PAGES 28	
16. DISTRIBUTION STATEMENT (of this Report) Approved For Public Release, Distribution Unlimited	15. SECURITY CLASS. (of this report) Unclassified	
17. DISTRIBUTION STATEMENT (of the abstract entered in Block 20, if different from Report) 14 C-129	15a. DECLASSIFICATION/DOWNGRADING SCHEDULE	
18. SUPPLEMENTARY NOTES		
19. KEY WORDS (Continue on reverse side if necessary and identify by block number) Normal Incidence Spectrometer Electron Spectrometer Electronics Subsystem		
20. ABSTRACT (Continue on reverse side if necessary and identify by block number) This report describes the design, fabrication and launch of an electronics subsystem for a normal incidence ultraviolet grating spectrometer for sounding rockets. It also describes an electronics subsystem built for an electron spectrometer which was launched as an auxiliary experiment carried by the grating spectrometer.		

DD FORM 1 JAN 73 1473

EDITION OF 1 NOV 65 IS OBSOLETE

UNCLASSIFIED
SECURITY CLASSIFICATION OF THIS PAGE (When Data Entered)

390446

1B

UNCLASSIFIED
SECURITY CLASSIFICATION OF THIS PAGE(When Data Entered)



UNCLASSIFIED
SECURITY CLASSIFICATION OF THIS PAGE(When Data Entered)

TABLE OF CONTENTS

	Page
1. INTRODUCTION.	1
2. ELECTRONICS FOR GRATING SPECTROMETER	
2.1 General.	1-4
2.2 Physical Configuration.	4
2.3 Circuit Description	5-7
3. GROUND SUPPORT EQUIPMENT FOR GRATING SPECTROMETER.	7
4. ELECTRONICS FOR ELECTRON SPECTROMETER.	7-9
5. TESTS.	10
6. FIELD SERVICES.	10

ACCESSION for		
NTIS	White Section	<input checked="" type="checkbox"/>
DOC	Buff Section	<input type="checkbox"/>
UNANNOUNCED JUSTIFICATION		
BY		
DISTRIBUTION/AVAILABILITY CODES		
Dist.	AVAIL. and/or SPECIAL	
A		

LIST OF FIGURES

	Page
FIGURE 1.	13
Timing Diagram	
FIGURE 2.	14
Block Diagram	
FIGURE 3.	15
Pulse Amplifier Schematic	
FIGURE 4.	16
Photon Counter/Shift Register Schematic	
FIGURE 5.	17
Motor Drive/Readout Schematic	
FIGURE 6.	18
Timer Schematic	
FIGURE 7.	19
P.S./Test/Output Schematic	
FIGURE 8.	20
Filter Drive Schematic	
FIGURE 9.	21
Attenuator Drive Schematic	
FIGURE 10	22
Thirteen Display Schematic	
FIGURE 11	23
Timing Diagram	
FIGURE 12	24
Timer Schematic	
FIGURE 13	25
Test/Output Schematic	
FIGURE 14	26
Counter/Shift Register Schematic	

LIST OF FIGURES

	Page
FIGURE 15	27
Step Generator Schematic	
FIGURE 16	28
Block Diagram	

LIST OF TABLES

TABLE I.	11 & 12
Electron Spectrometer #2 Ladder Voltages	

1. INTRODUCTION

This report covers the design, fabrication, and checkout and launch of the electronics subsystem for the RS-61 normal incidence, UV grating spectrometer including the electronics for an auxiliary electron analyzer.

The personnel who worked on this contract were Chester G. Kuczun, Robert S. Hills, Norbert F. Robertie, and Timothy A. Doyle.

The RS-61 spectrometer, exclusive of the electronics, was built by Comstock & Wescott, Inc., Cambridge, Massachusetts under contract F19628-74-C-0002.

An electronics system similar to the system described in this report was built for Spectrometer RM 58II under a subcontract from Comstock & Wescott (Contract F19628-72-C-0254).

2. ELECTRONICS FOR GRATING SPECTROMETER

2.1 General

The function of the electronics for the grating spectrometer is to count pulses from a photomultiplier which produces pulses for photons hitting its cathode, and to control a stepping motor which scans wavelength in the Fastie-Ebert Spectrometer.

The spectrometer steps at the rate of 224 steps per second. Thirteen steps are required to scan one Angstrom. The instrument scans from 1700 Å to 3500 Å. The time for each step is 4.464 milliseconds and is controlled by a crystal clock to 0.01 percent. The photomultiplier output pulses are counted during all except the first 15 microseconds of the step time or 4.449 milliseconds. The initial 15 microseconds is used to transfer the count to a shift register and reset the counters.

The count data and wavelength step identification is connected to a telemetry format consisting of a PCM frame of three 16 bit words. The first word is a sync word, the second word is the wavelength position in Angstroms represented by four binary coded decimal digits and the third word (four digit binary coded decimal) is the totalized count of the photon pulses during 4.449 milliseconds at the wavelength indicated in second word.

A timing diagram showing the PCM format and how it is generated is given in Figure 1.

The 16 bit sync word is used by a computer in the reduction of the flight data. A console built on a previous contract is used to display the output of the instrument during testing, calibration, and pre-launch operation. It is also used to give a quick look at the flight data by producing an

analog output of the photon count rate from real time telemetry or tape playback. This console's decoding electronics is synchronized to the instrument's data train by detecting the high amplitude bits at the start of the sync word.

The stepping motor has four windings which are energized in a specific sense to produce rotation. It rotates 90 degrees per step and thus requires four different logic sequences which are generated and controlled by the electronics system.

In addition to the functions described above, the electronics subsystem includes a pulse amplifier, test pulse generator, high voltage power supply system, a filter actuation/drive circuit which inserts a background filter in the photon beam at 1900 Å and 2400 Å and an attenuator actuation/drive circuit which inserts a neutral density filter in the photon beam at wavelengths longer than 1943 Å.

The PCM data were brought through the interface connector and modulated an IRIG channel H subcarrier oscillator in the S band telemetry deck. This subcarrier channel, when operated for maximum frequency response, had a minimum rise time of 14 microseconds which is more than sufficient for transmission of the PCM signal with a non return to zero form and a bit width of 93 microseconds.

Voltage monitors were brought out to the interface connector and commutated by a TRI-CON commutator onto subcarrier channel 10.

The instrument operated on a 28.8 volt sealed nickel cadmium battery with a one ampere hour capacity. Instrument current was less than 0.7 amperes for less than 10 minutes during flight.

All the integrated circuit logic was of the complementary symmetry, metal oxide semiconductor (COSMOS) type.

2.2 Physical Configuration

The electronic system was made up of three sections: the pulse amplifier located on the detector assembly at the front of the instrument, six digital logic cards which were located in a card rack integral with the rear of the instrument, and a high voltage power supply and card located in the center of the housing. A dual (+13V, -13V) low voltage regulated power supply was mounted on one of the digital logic cards. All electronics was integral with the housing. The card rack was vented to the outside.

The instrument electrical interface connectors were hard mounted to the housing.

2.3 Circuit Description

A block diagram of the instrument electronics is given in Figure 2. It is similar to the electronic system in the RM 58II instrument except for the addition of the background filter circuit and deletion of the solar photometer circuits.

The pulses from the pulse amplifier, Figure 3 are fed to the photon counter card, Figure 4. The binary-coded-decimal output from the four counting stages was transferred to the two 8 bit shift registers and shifted out as word three in the three word PCM frame.

The wavelength scanner position was counted in four decade counters on the Motor Drive/Readout card, transferred to two 8 bit shift registers and shifted out as word two in the PCM frame. A schematic is given in Figure 5. The end of scan is detected by limit switches which reverse the motor direction and at the low end also set the scan counts to 1700.

The logic circuits for driving the four position motor were included with the scanner position circuits on the Motor Drive/Readout card.

The timer card contained the PCM clock oscillator and logic circuits to generate the necessary sync pulse, shift pulses, load, inhibit, and counter reset signals. A schematic is shown in Figure 6.

The Power Supply/Test/Output card included the low voltage $\pm 15V$ converters, a test pulse generator operating at 25,000 pulses per second, load, reset, and motor trigger pulse circuits, and circuits to process the PCM data into the form required for feeding the telemetry. A schematic is given in Figure 7.

Circuits on the Filter Drive/13 card actuate a solenoid to insert a filter into the photon beam for one second when the scan is at 1900 Å and 2400 Å and is scanning towards a longer wavelength. The scan motor is stopped during the one second. The 1900 Å and 2400 Å scan readings are detected on the Motor Drive/Readout card and a trigger transferred to the filter card. Also, on this card is a circuit which counts every thirteenth motor step trigger and advances the wavelength register one Angstrom. A binary output of four bits counting 0 through 12 is picked off of this circuit and fed to the control console to be displayed along with the indicated Angstroms. A schematic is shown in Figure 8.

The Attenuator Drive card energizes a solenoid to insert the neutral density filter at wavelengths longer than 1943 Å. The scan shift register setting of 1944 is detected and sets a flip-flop when the wavelength is scanning up and resets the flip-flop when 1944 is passed on the way down. The schematic is given in Figure 9.

The logic cards are similar in appearance to those shown in the photographs in report AFGL-TR-74-0397 on RM 58.

3. GROUND SUPPORT EQUIPMENT FOR GRATING SPECTROMETER

The control console originally built for use with the RM 58II instrument was used to control the RS-61 Spectrometer. Some modification was necessary.

The most significant digit of the five digit wavelength display was blanked out and the remaining four digits displayed Angstroms directly (1700 to 3500).

A new two digit display was added to indicate the thirteen motor steps required for each Angstrom change. This indicator was driven from a new circuit card which was added to the console. It contained circuits to change the level of the 4 binary bits from the flight equipment from 13V to 5V and convert from binary to BCD coding. A schematic is shown in Figure 10.

4. ELECTRONICS FOR ELECTRON SPECTROMETER

An electronic subsystem was built to energize the Government furnished electron spectrometer detector.

The electronics generated 64 different voltages

which were applied in sequence to the detector plates. The electrons collected at each voltage (energy level) were multiplied in a channel electron multiplier in the detector assembly and the current bursts (each burst representing one electron) were counted in a 4 decade decimal counter (16 bits).

The 16 bit electron count, along with six binary bits representing the 64 detector voltage levels at which the electrons were collected, and a 16 bit sync word comprised the PCM frame of 48 bits. A timing diagram is given in Figure 11. The frame rate was 50 per second. Thus, the electron collection time for each voltage step was 20 milliseconds (actually 15 microseconds less than 20 milliseconds or 19.985 milliseconds).

The detector voltages range from less than a volt to more than 64 volts and the ratio of successive voltages was held to better than 1/2 of one percent of 1.06. A table of voltages is given in Table 1.

A high voltage power supply and filter card for the electron multiplier was mounted adjacent to the multiplier. The output pulses from the multiplier were amplified in a pulse amplifier and fed to the counter and logic boards which were located in a box mounted on the side of the RS-61 Spectrometer opposite the bolt circle.

The box contained five printed circuit cards and two low voltage power supplies. The five cards were: a timer card to generate the PCM frame logic; a test/output card which contained a test generator and also circuits to combine the electron count, step number, and sync word to make the complete PCM output waveform; a counter card; a step generator card; and step drive card. Schematics of the cards are given in Figures 12 through 15.

The pulse amplifier is similar to that used in RS-61. A block diagram of the electronic system is given in Figure 16.

A G.S.E. console was used to operate the electron spectrometer system during acceptance and environmental test, calibration integration and in the field prior to launch. The console was also used to decode the electron count and voltage step from the flight magnetic tape for quick look data reduction immediately after the rocket flight.

This console was designed and built by TRI-CON ASSOCIATES, INC., on a subcontract from Comstock & Wescott contract (F19628-73-C-0253.)

The PCM data frame was telemetered on IRIG channels F and 17. The high voltage monitor was on channel 16. In addition the high voltage monitor was commutated by the TRI-CON commutator.

5. TESTS

The RS-61 instrument was delivered to AFGL on 15 September 1975. It was checked per the Test and Acceptance Plan dated 9 September 1975.

The Electron Spectrometer electronics was delivered to AFGL on 30 March 1976. It was checked at AFGL per R&D Test and Acceptance Plan dated 5 April 1976, and mounted on the RS-61 housing and prepared for a vibration test. On 16 April it was vibrated along with the RS-61 instrument at the AFGL vibration facilities. No failures occurred.

6. FIELD SERVICES

The complete instrument was integrated with the pointing control at Ball Brothers Research Corporation, Boulder, Colorado during the week of 26 April 1976. The electronics performed correctly during all integration phases. R. Hills spent the entire week at Boulder.

Pre-launch procedures were carried out the week of 10 May 1976. At WSMR the instrument was launched aboard an Aerobee 150 rocket from B Tower at LC-35 at 1100 hours MDT. Data was obtained from both instruments and the entire payload was recovered. R. Hills was at WSMR 10 May 1976 through 18 May 1976.

A launch report was filed by Comstock & Wescott on Contract F19628-74-C-0002.

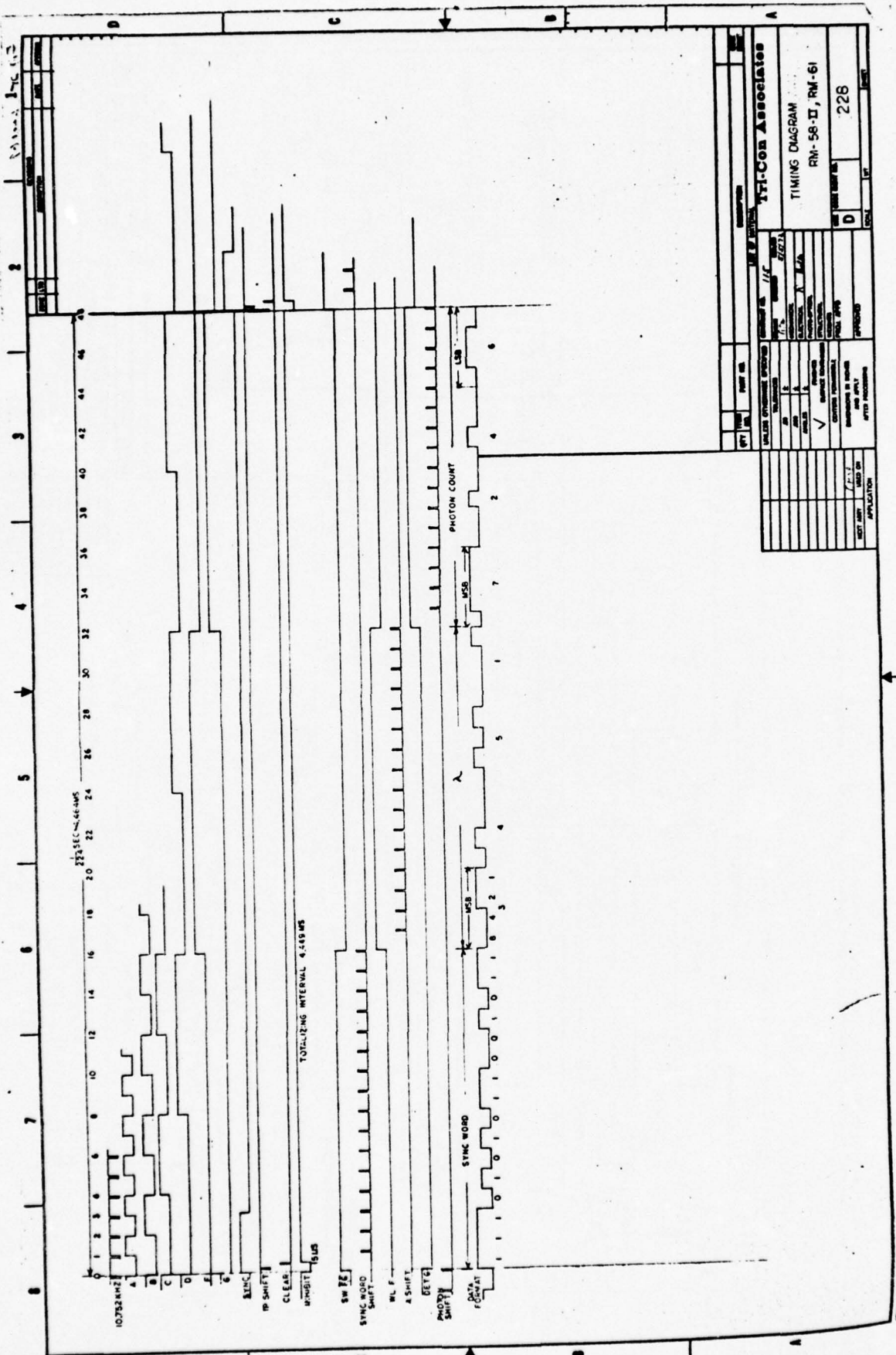
TABLE I

ELECTRON SPECTROMETER #2 LADDER VOLTAGES

<u>STEP</u>	<u>V+</u>	<u>V-</u>
0	.006	.002
1	.157	.153
2	.320	.316
3	.491	.486
4	.670	.665
5	.862	.857
6	1.068	1.062
7	1.285	1.280
8	1.457	1.451
9	1.546	1.542
10	1.641	1.636
11	1.741	1.736
12	1.848	1.843
13	1.960	1.955
14	2.078	2.073
15	2.204	2.199
16	2.351	2.344
17	2.492	2.486
18	2.645	2.638
19	2.805	2.799
20	2.974	2.966
21	3.154	3.146
22	3.346	3.339
23	3.551	3.543
24	3.764	3.755
25	3.993	3.983
26	4.234	4.224
27	4.486	4.476
28	4.758	4.747
29	5.042	5.031
30	5.341	5.329
31	5.661	5.649
32	6.084	6.068

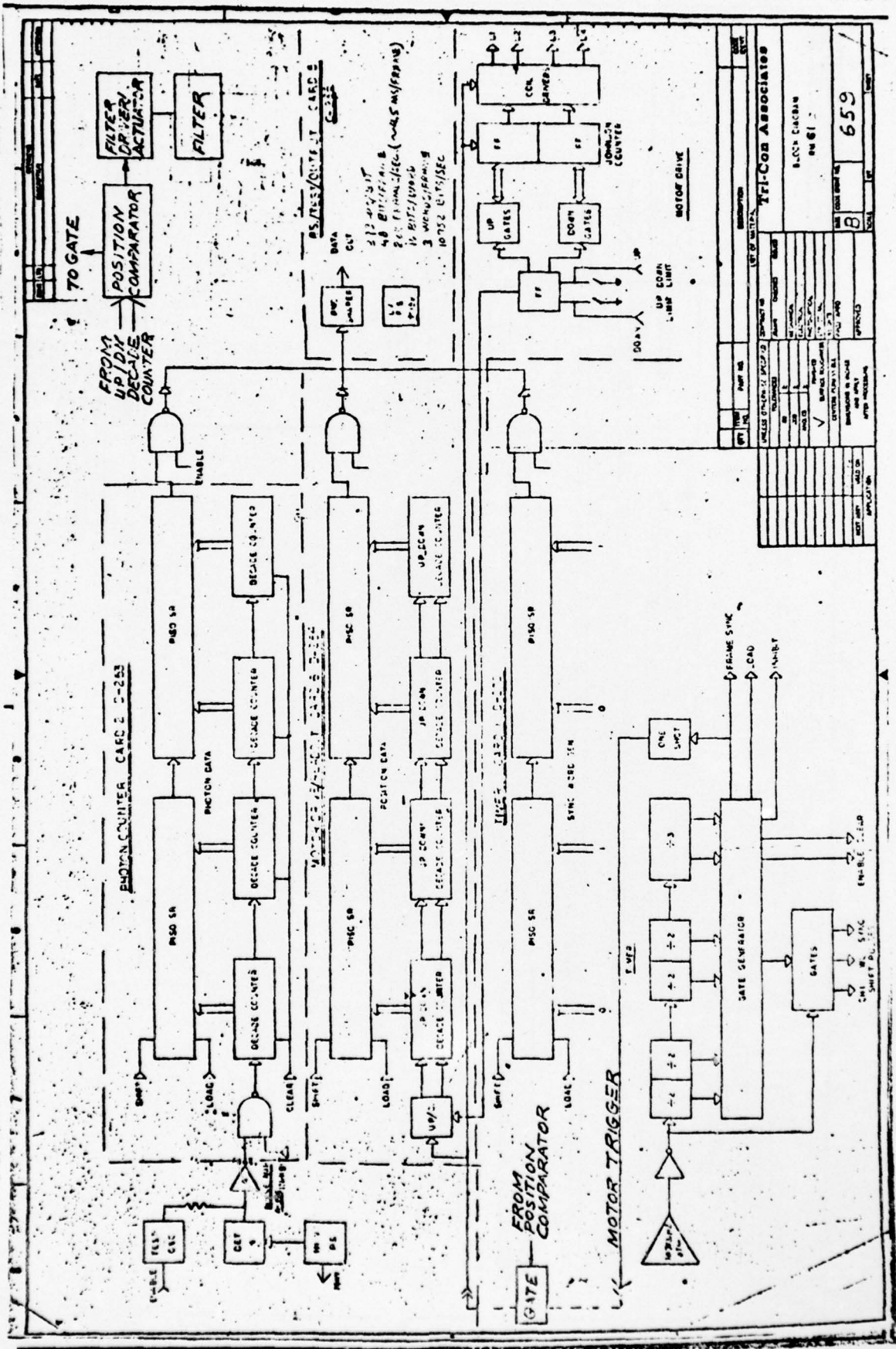
TABLE I cont'd

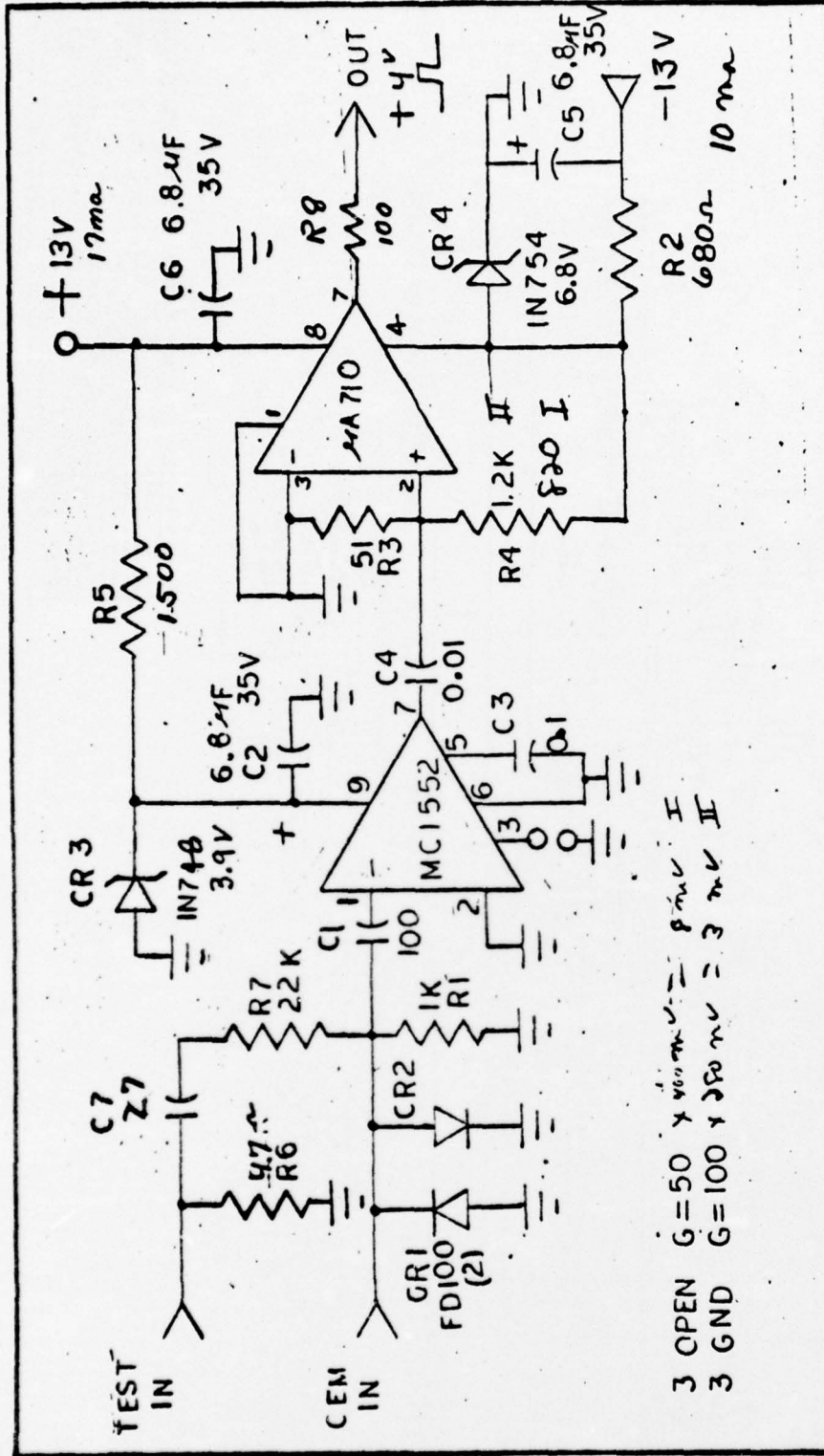
<u>STEP</u>	<u>V+</u>	<u>V-</u>
33	6.445	6.430
34	6.837	6.820
35	7.245	7.339
36	7.675	7.657
37	8.135	8.118
38	8.629	8.610
39	9.149	9.132
40	9.680	9.690
41	10.27	10.28
42	10.88	10.89
43	11.53	11.54
44	12.22	12.23
45	12.95	12.96
46	13.71	13.72
47	14.53	14.53
48	15.76	15.76
49	16.70	16.69
50	17.71	17.70
51	18.76	18.75
52	19.87	19.86
53	21.11	21.07
54	22.39	22.34
55	23.73	23.69
56	25.14	25.09
57	26.65	26.59
58	28.24	28.18
59	29.90	29.84
60	31.69	31.62
61	33.56	33.50
62	35.53	35.45
63	37.63	37.56



TIME		DATE	
10732 MHz	10732 MHz	10732 MHz	10732 MHz
YTI-Con Associates			
TIMING DIAGRAM			
RM-56-II, RM-61			
DRAWN BY		CHECKED BY	
DATE		DATE	
SCALE		SCALE	
APPROVED		APPROVED	
228		228	

COPY AVAILABLE TO DDC DOES NOT PERMIT FULLY LEGIBLE PRODUCTION





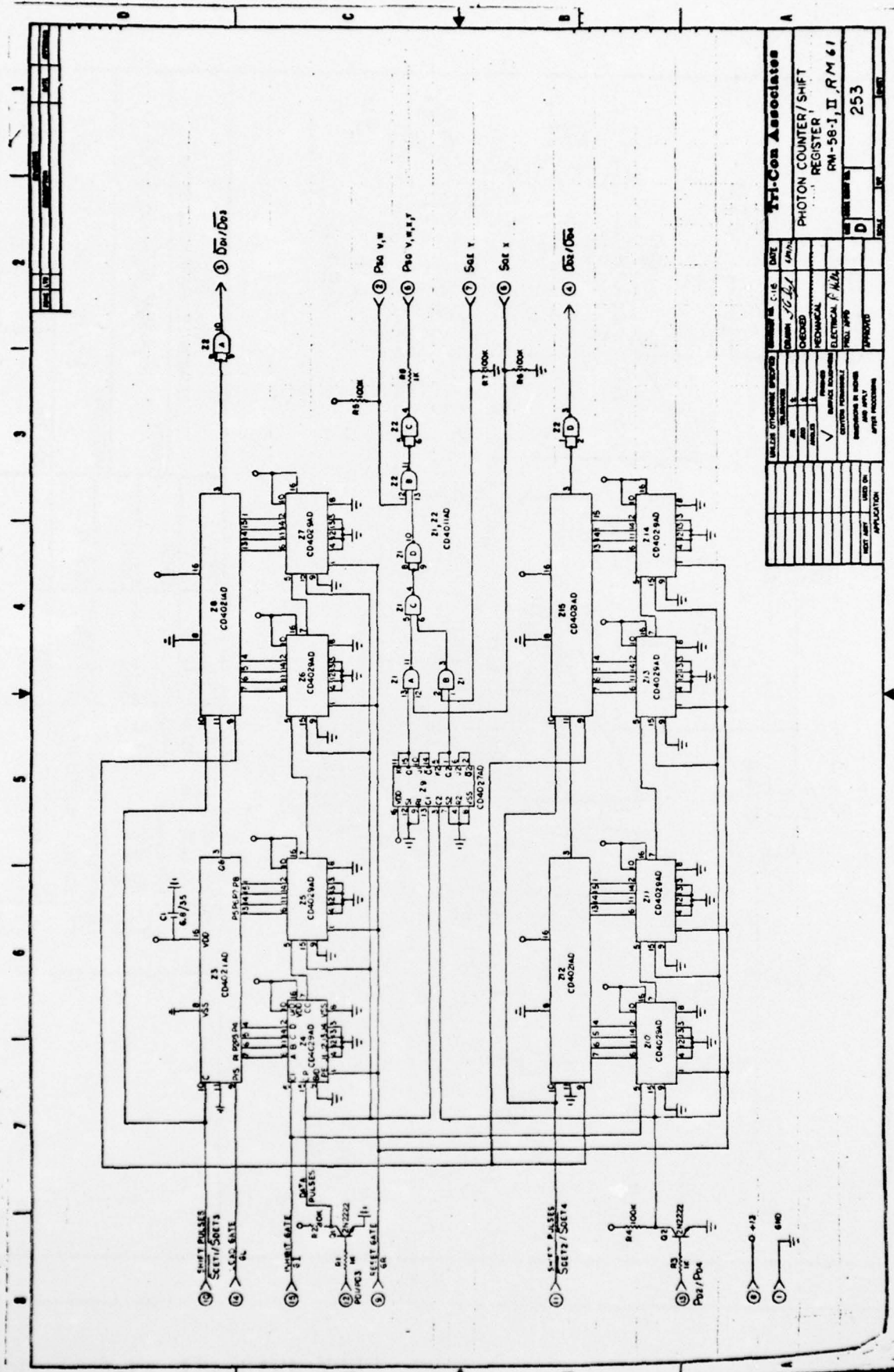
2.25

-15-

TOLERANCES UNLESS OTHERWISE SPECIFIED:		DRN:	DATE:	TRI-CON. CAMBRIDGE, MASSACHUSETTS	
FRACTIONAL	$\pm 1/64$	CKD:	DATE:	PART: PULSE AMP	
DECIMAL	$\pm .005$	APP:	DATE:	MATERIAL: RM-58, RS-61	
ANGULAR	$\pm 1/4^\circ$	NO. REQ'D:	SCALE:	JOB NO: A-	
ALL EDGES	.005/0.010 R	FINISH:		REV. DWG. NO. 394	
SURFACE FINISH	125 \sqrt	NEXT ASSY:			
REV	REMARKS	DATE			

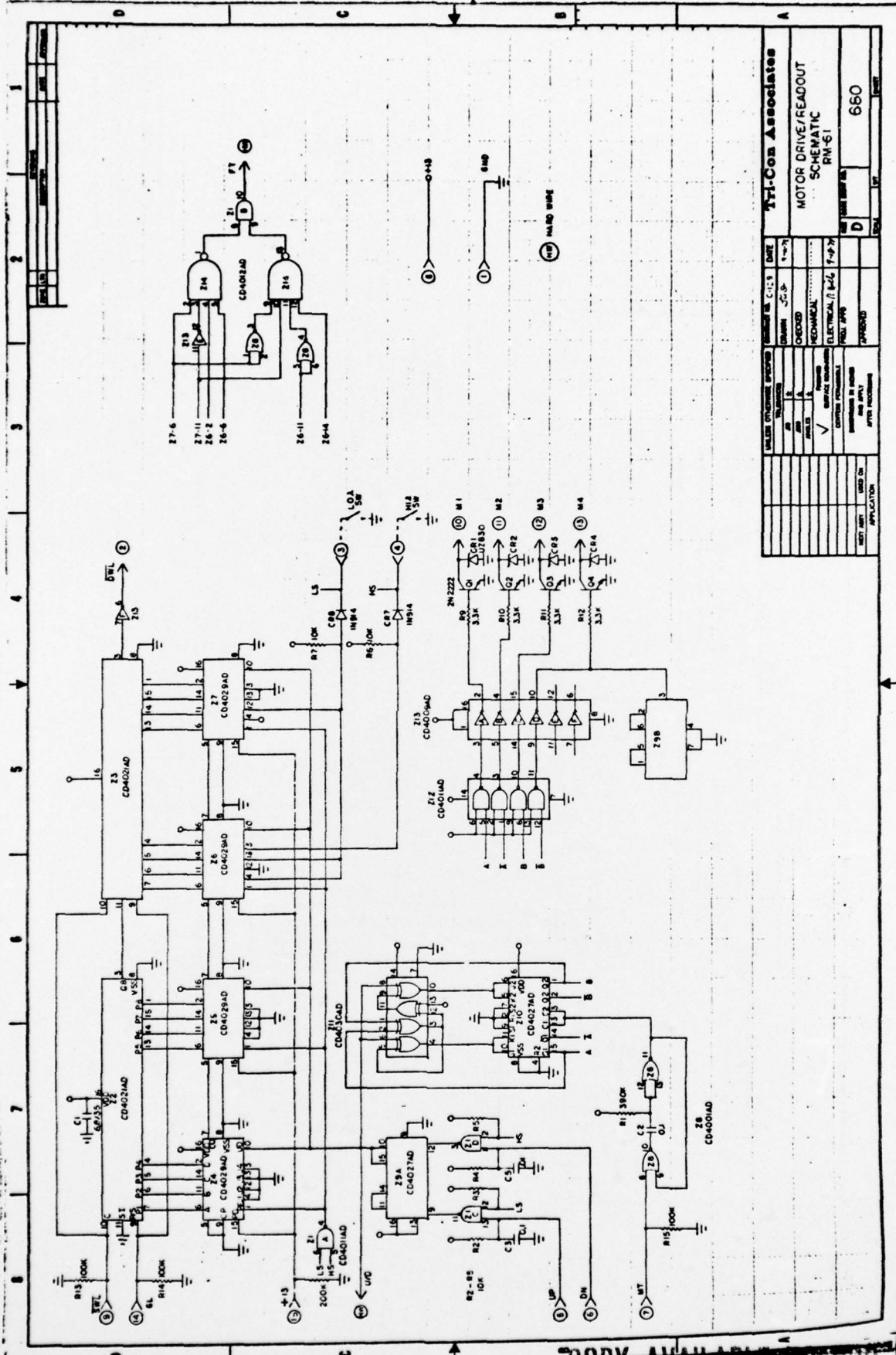
Figure 2.16

COPY AVAILABLE TO DDC DOES NOT PERMIT FULLY LEGIBLE PRODUCTION



DATE		2/27/67	
DESIGNED BY		J. H. B.	
CHECKED BY		J. H. B.	
DRAWN BY		J. H. B.	
ELECTRICAL F.M.A.		J. H. B.	
PHYSICAL F.M.A.		J. H. B.	
APPROVED BY		J. H. B.	
APPLICATION		PHOTON COUNTER/SHIFT REGISTER	
PART NO.		RM-58-1, II, RM 61	
REV. NO.		D	
REV. DATE		253	

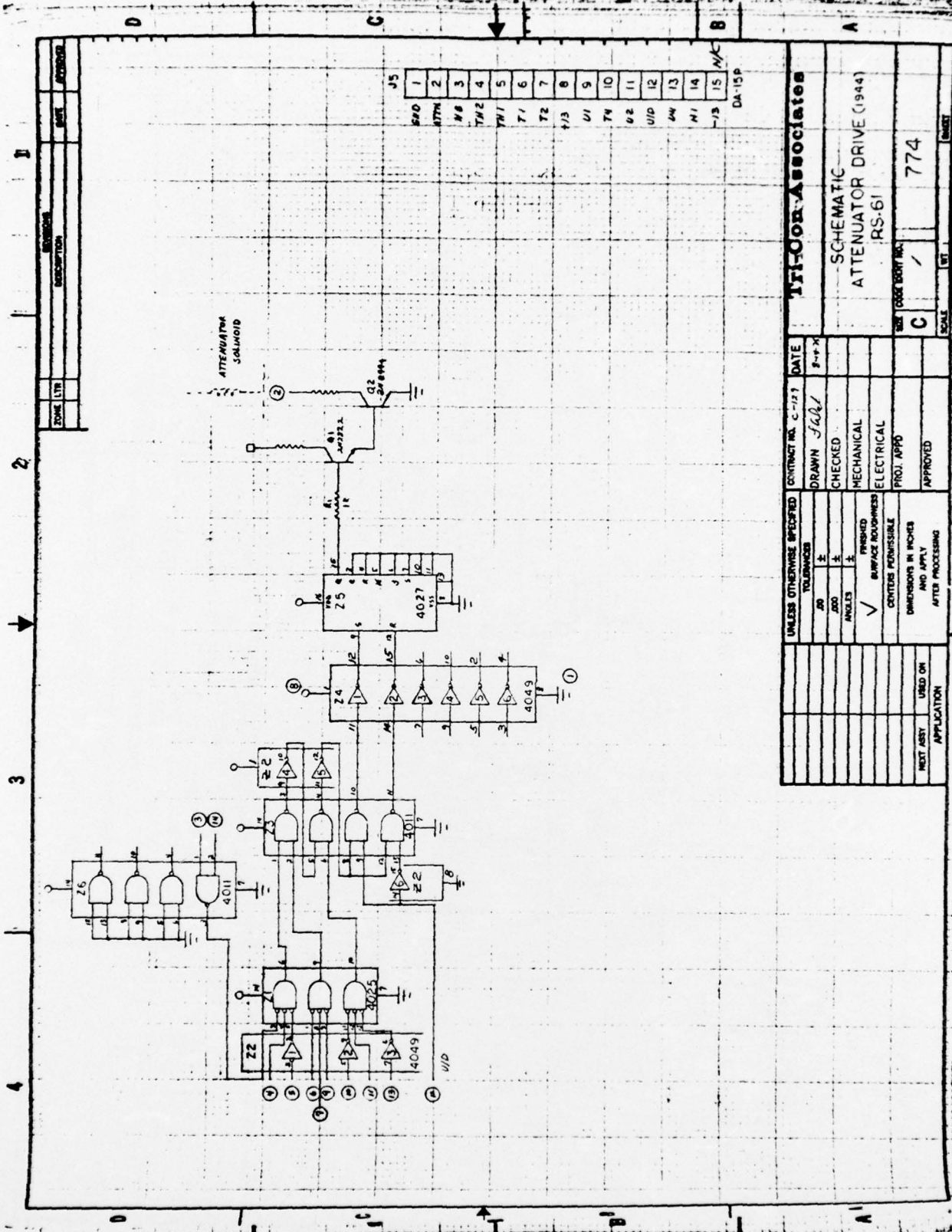
COPY AVAILABLE TO DDC DOES NOT PERMIT FULLY LEGIBLE PRODUCTION



Tri-Con Associates		
DESIGNED BY	DATE	1-1-79
DRAWN BY	CHECKED	
REVIEWED BY	APPROVED	
ELECTRICAL		7-10-79
MECHANICAL		
MATERIALS		
TESTING		
APPROVED		
PROJECT NO.		660
DRAWING NO.		
SHEET NO.		1
TOTAL SHEETS		1
SCALE		
APPLICATOR		
USED IN		
NEXT REV.		
APPLICATION		

MOTOR DRIVE/READOUT SCHEMATIC RM-61

COPY AVAILABLE TO DDC DOES NOT PERMIT FULLY LEGIBLE PRODUCTION

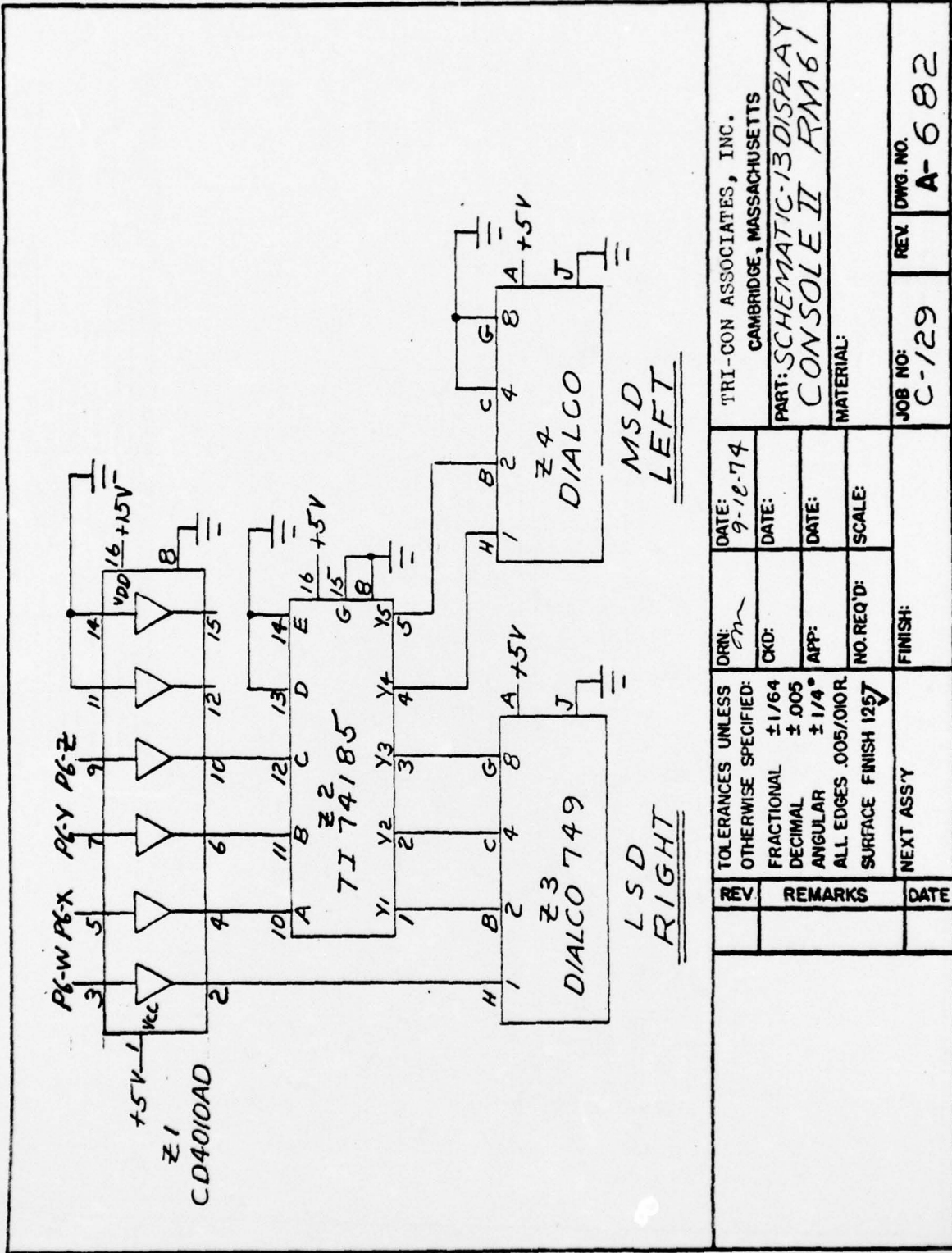


SCALE LIST	DESCRIPTION	DATE	APPROVED

J5	1	2	3	4	5	6	7	8	9	10	11	12	13	14	15
	270	470	470	470	470	470	470	470	470	470	470	470	470	470	470

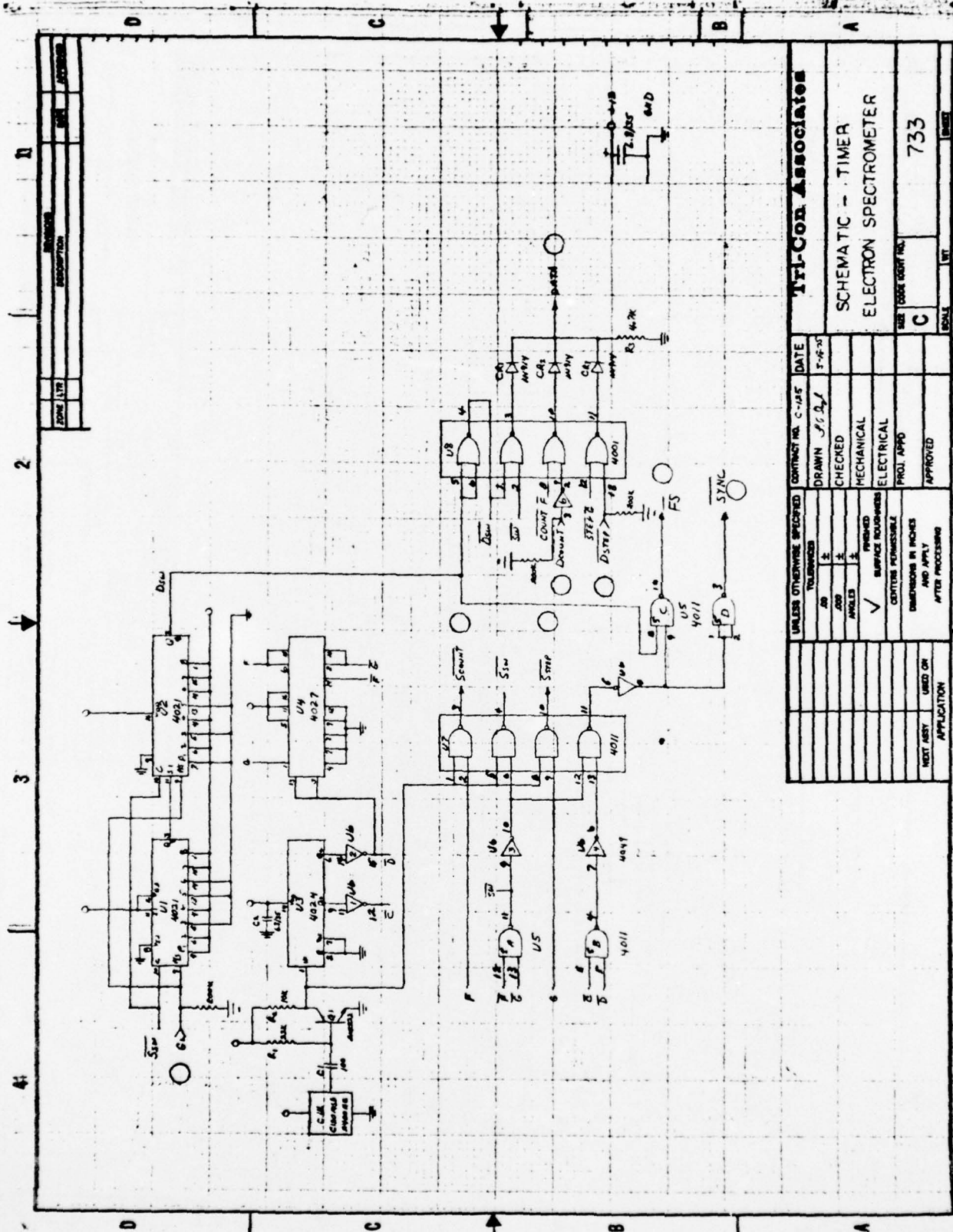
UNLESS OTHERWISE SPECIFIED		DATE	Tri-Oor-Associates	
DR	TELEPHONE	CONTRACT NO. C-117	DATE	8-1-74
DR	TELEPHONE	DRAWN	JAG	
DR	TELEPHONE	CHECKED		
DR	TELEPHONE	MECHANICAL		
DR	TELEPHONE	ELECTRICAL		
DR	TELEPHONE	PROJ. APPR.		
DR	TELEPHONE	APPROVED		
DIMENSIONS IN INCHES AND APPLY AFTER PROCESSING		SCHEMATIC ATTENUATOR DRIVE (1944)		
NEXT ASST USED ON APPLICATION		SIZE (CASE BODY NO.) C		
APPLICATION		SCALE 1/8"		
		774		

COPY AVAILABLE TO DDC DOES NOT PERMIT FULLY LEGIBLE PRODUCTION



REV		REMARKS		DATE	
TOLERANCES UNLESS OTHERWISE SPECIFIED:		DRN:	DATE:	TRI-CON ASSOCIATES, INC.	
FRACTIONAL	± 1/64	<i>em</i>	9-12-74	CAMBRIDGE, MASSACHUSETTS	
DECIMAL	± .005	CKD:		PART: SCHEMATIC-13 DISPLAY	
ANGULAR	± 1/4°	APP:		CONSOLE II RM61	
ALL EDGES	.005/0.010 R	NO. REQ'D:		MATERIAL:	
SURFACE FINISH	1257	SCALE:			
NEXT ASSY		FINISH:			
				JOB NO:	REV DWG. NO.
				C-129	A-682

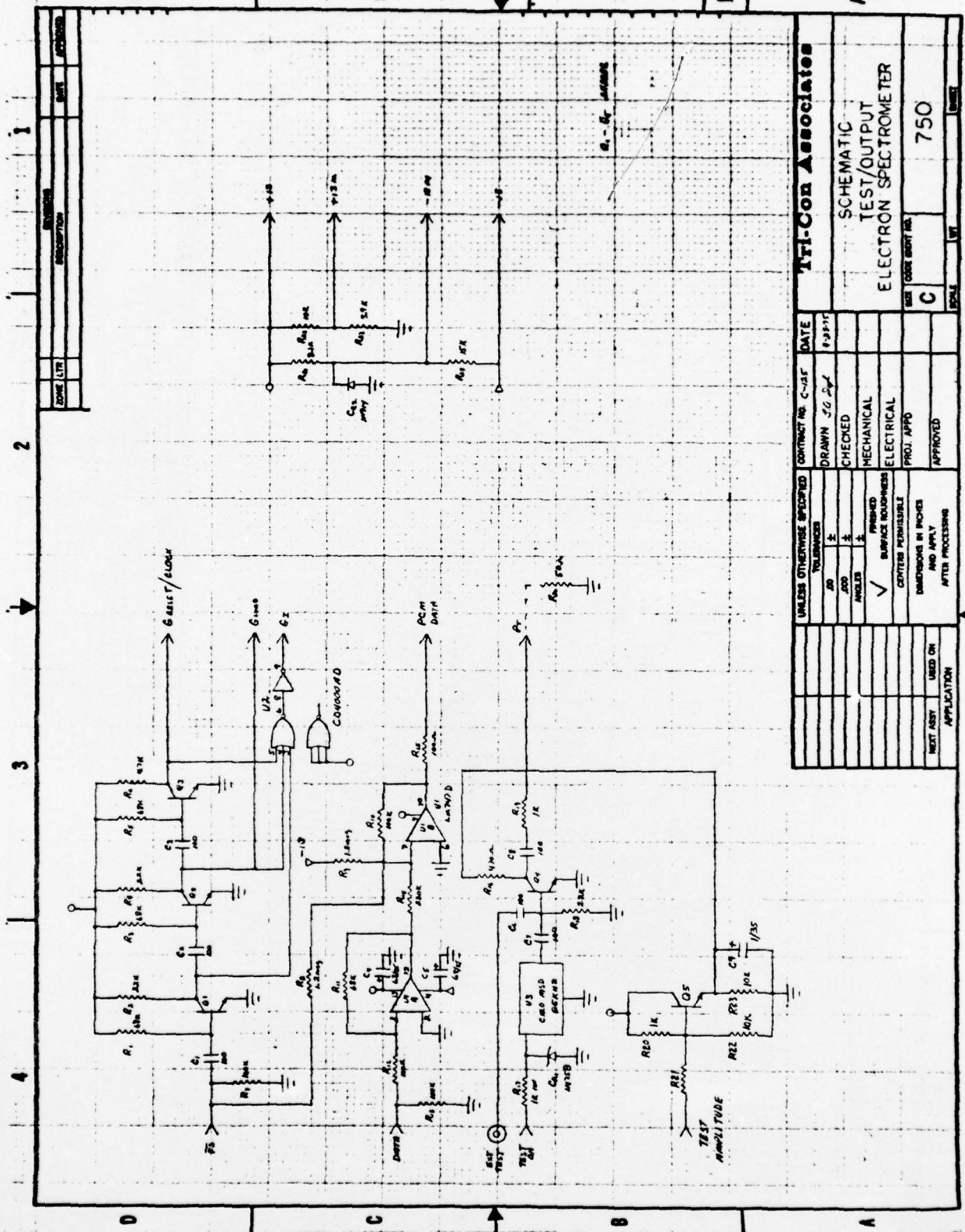
COPY AVAILABLE TO DDC DOES NOT PERMIT FULLY LEGIBLE PRODUCTION



REV	DESCRIPTION	DATE
1		
2		
3		
4		

TTL-CON Associates	
SCHEMATIC - TIMER	
ELECTRON SPECTROMETER	
DATE	5-18-55
CONTRACT NO. C-145	
DRAWN	J. D. J.
CHECKED	
MECHANICAL	
ELECTRICAL	
PROJ. APPD	
APPROVED	
UNLESS OTHERWISE SPECIFIED	
TOLERANCES	
ANGLES	
FINISH	
SURFACE TOLERANCES	
CENTERS PERMISSIBLE	
DIMENSIONS IN INCHES	
AND APPLY	
AFTER PROCESSING	
NEXT ASST	
USED ON	
APPLICATION	
SCALE	1/16"
REV	
733	

COPY AVAILABLE TO DDC DOES NOT PERMIT FULLY LEGIBLE PRODUCTION

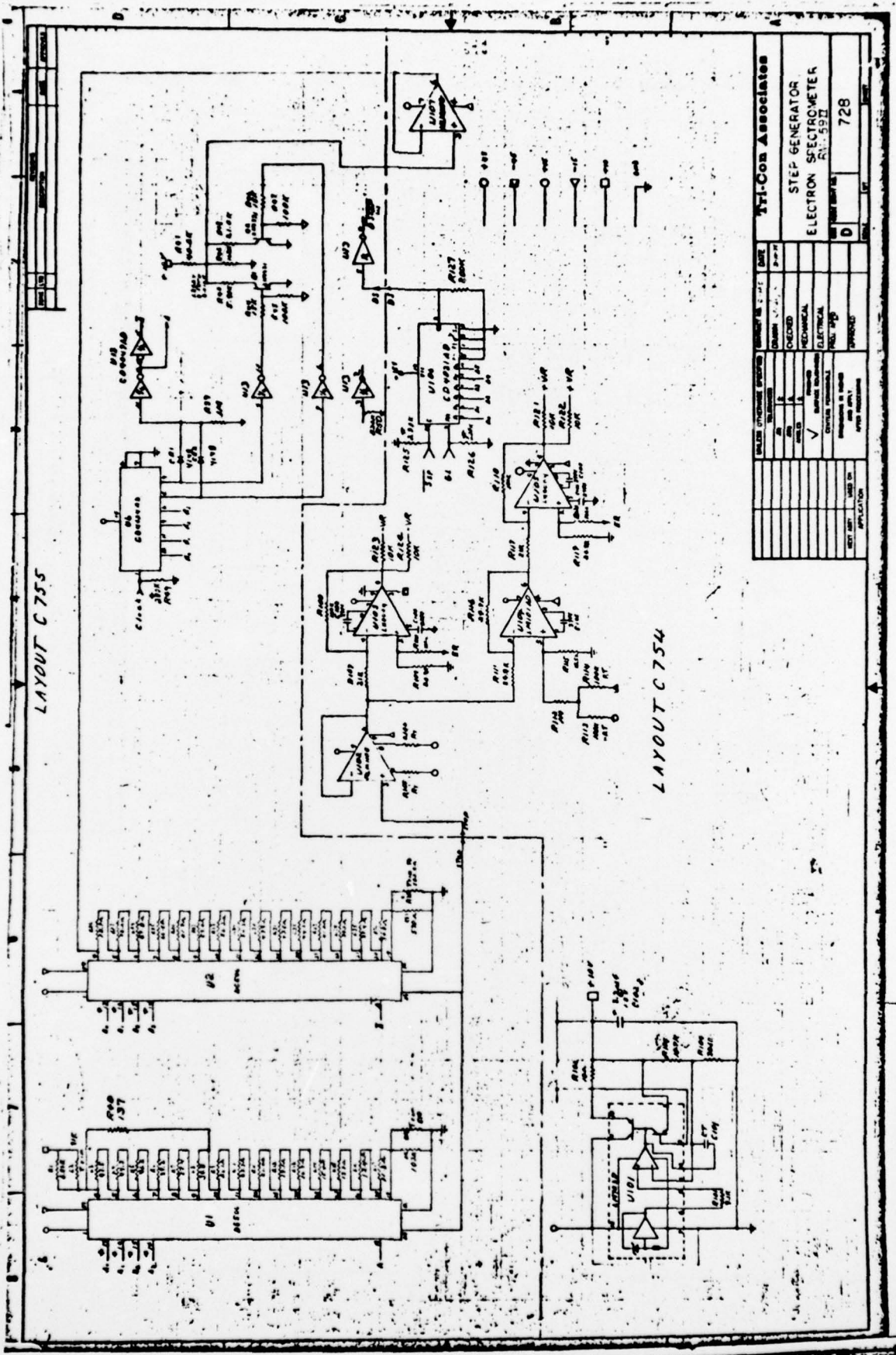


FORM LTR	REVISION	DATE	APPROVED

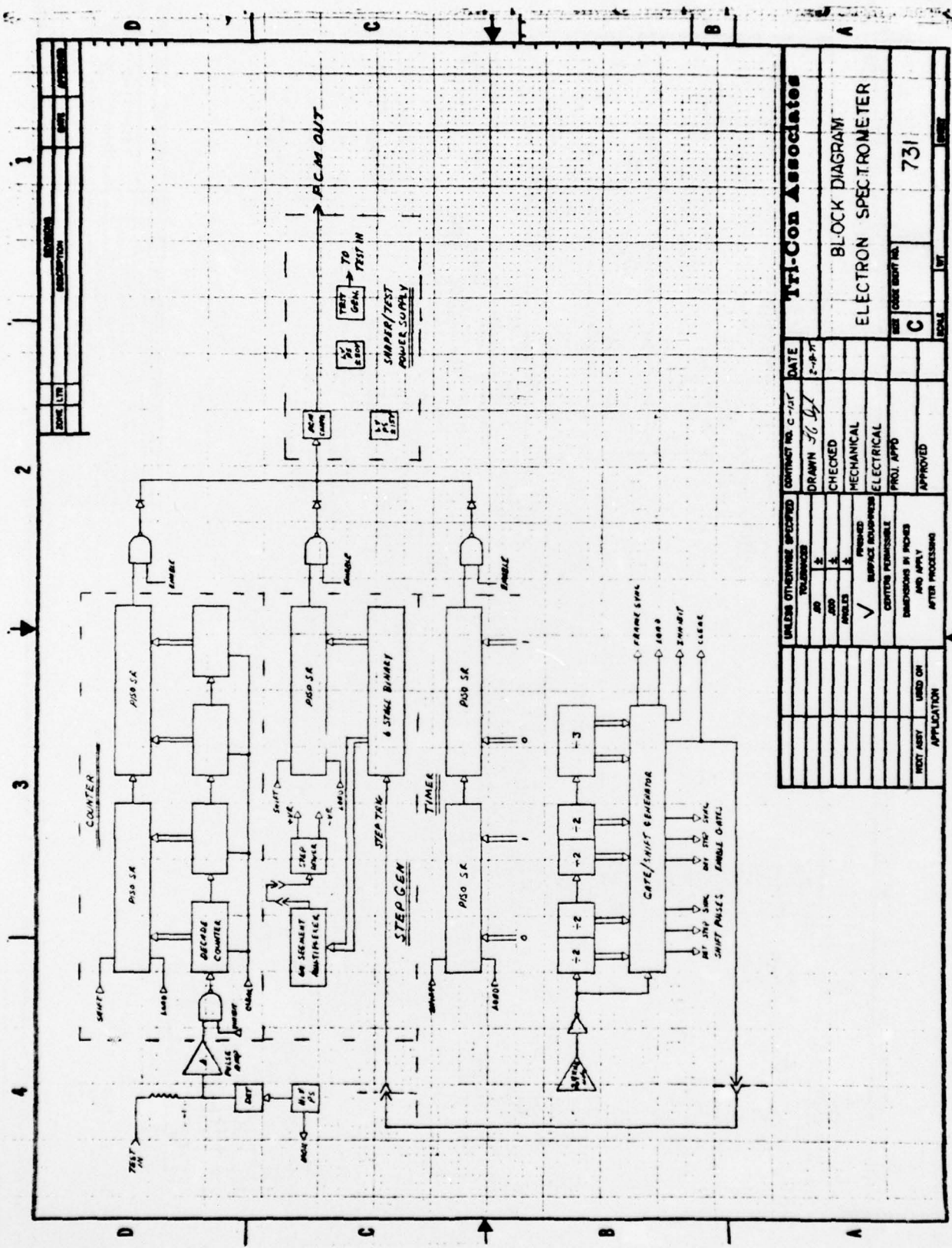
UNLESS OTHERWISE SPECIFIED		CONTRACT NO. C-124	DATE
DRY	±	DRAWN J.G. Duff	1-2-61
WET	±	CHECKED	
ANGLES	±	MECHANICAL	
		ELECTRICAL	
		PROJ. APPR.	
		APPROVED	
APPLICATION			
NEXT ASSY			
USED ON			
DIMENSIONS IN INCHES			
CRITERIA PERMISSIBLE			
FINISHED SURFACE ROUGHNESS			
MECHANICAL			
ELECTRICAL			
CHECKED			
DATE			
DRAWN			
CONTRACT NO.			
DATE			
FORM LTR			
REVISION			
DATE			
APPROVED			

TI-Con Associates
 SCHEMATIC
 TEST/OUTPUT
 ELECTRON SPECTROMETER
 SIZE CODE B001 004
 SCALE C
 WT 750
 UNIT

COPY AVAILABLE TO DGC DOES NOT PERMIT FULLY LEGIBLE PRODUCTION



TRIP-CON ASSOCIATES	
DESIGNED BY	DATE
CHECKED BY	DATE
MECHANICAL	
ELECTRICAL	
PROJECT NO.	
REV. NO.	
728	
STEP GENERATOR ELECTRON SPECTROMETER	
728	



REVISION	DATE	BY
DESCRIPTION		
DATE LTR		

Tri-Con Associates	
CONTRACT NO. C-101	DATE 2-8-57
DRAWN <i>SG</i>	CHECKED
MECHANICAL	ELECTRICAL
PROJ. APPD	APPROVED
UNLESS OTHERWISE SPECIFIED	
AS TO	AS TO
AS TO	AS TO
AS TO	AS TO
✓	PREPARED SURFACE FINISHES CONTAIN PERMISSIBLE DIMENSIONS IN POKES AND APPLY AFTER PROCESSING
TEST USEY	USED ON APPLICATION
BLOCK DIAGRAM ELECTRON SPECTROMETER	
USE CASE NO. 731	SCALE

COPY AVAILABLE TO DDC DOES NOT PERMIT FULLY LEGIBLE PRODUCTION