

AD-A031 933

WISCONSIN UNIV MADISON MATHEMATICS RESEARCH CENTER
SOME MATRIX OCCUPANCY PROBLEMS WITH DICHOTOMOUS ENTRIES. (U)
AUG 76 L HOLST

F/G 12/1

DAAG29-75-C-0024

UNCLASSIFIED

MRC-TSR-1663

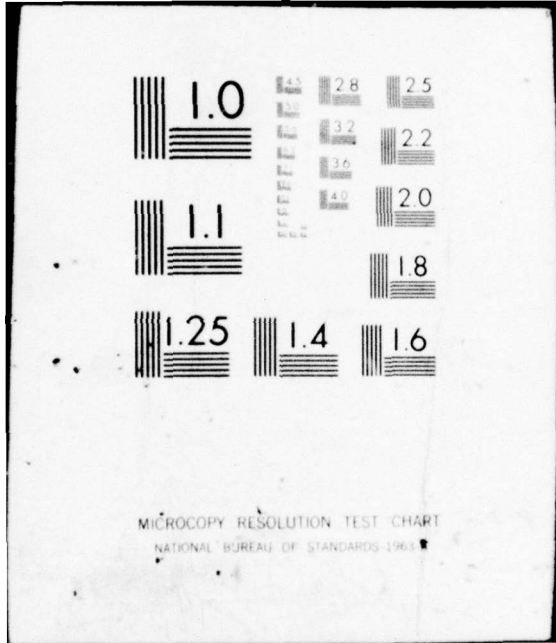
NL

1 OF 1
AD
A031933



END

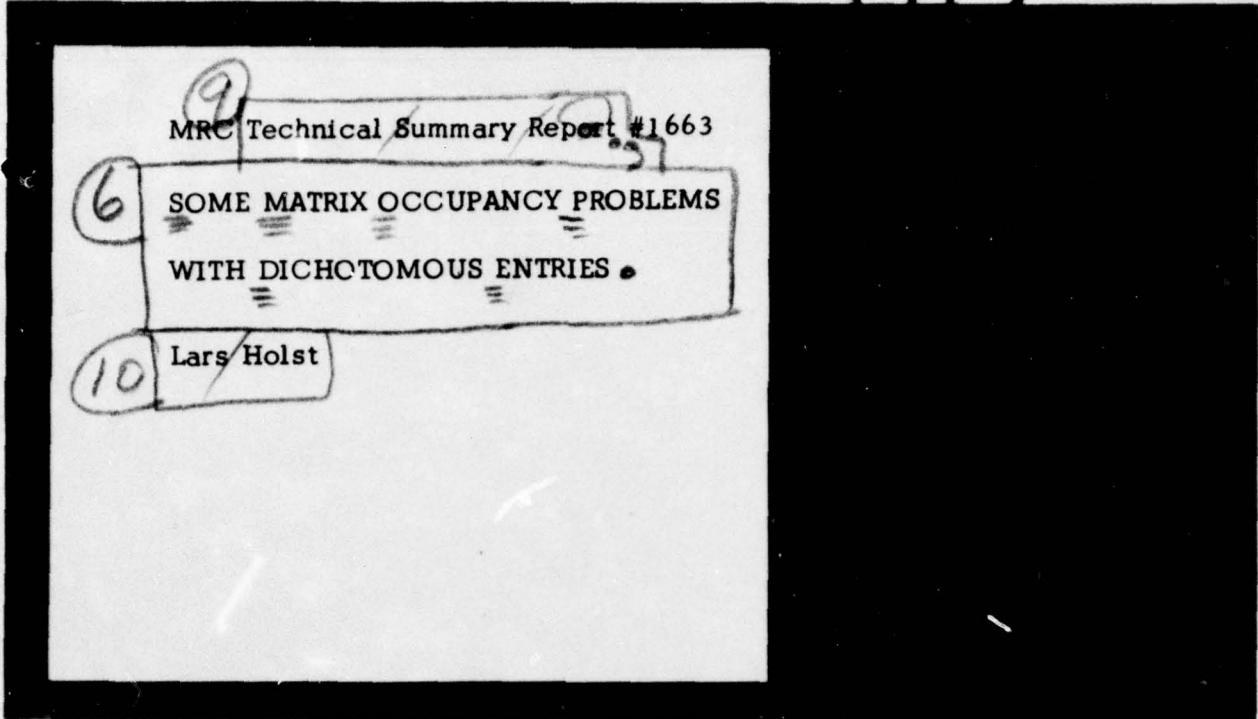
DATE
FILMED
1 - 77



ADA031933

11

RG



Mathematics Research Center
 University of Wisconsin-Madison
 610 Walnut Street
 Madison, Wisconsin 53706

DDC
 RECEIVED
 NOV 12 1976
 C

11 August 1976

(Received June 4, 1976)

12 18p.

14 MRC-TSR-1663

Approved for public release
 Distribution unlimited

15 DAAG29-75-C-0024

Sponsored by

U. S. Army Research Office
 P. O. Box 12211
 Research Triangle Park
 North Carolina 27709

221 200
 lpg

UNIVERSITY OF WISCONSIN - MADISON
MATHEMATICS RESEARCH CENTER

SOME MATRIX OCCUPANCY PROBLEMS WITH DICHOTOMOUS ENTRIES

Lars Holst

Technical Summary Report #1663
August 1976

ABSTRACT

An $R \times N$ matrix is generated in the following way. In each row a predetermined number of positions are randomly assigned the value 1; the remaining positions are assigned the value 0. For each column a real valued function of the elements is given. In this paper the sum of the values of these functions is studied when $N \rightarrow \infty$. The results can be applied to e.g. "committee" problems and contingency tables of 0-1-variables.

AMS (MOS) Subject Classifications: Primary 60C05, Secondary 62G99

Key Words: matrix occupancy problems; committee problems; contingency tables; dichotomous variables; limit theorems

Work Unit Number 4 (Probability, Statistics, and Combinatorics)

SEARCHED	INDEXED
SERIALIZED	FILED
BY	
AUG 1976	
FBI - MADISON	

SOME MATRIX OCCUPANCY PROBLEMS WITH DICHOTOMOUS ENTRIES

Lars Holst

1. Introduction

In Feller (1968), p. 112, exercise 16, the following problem is posed:

"A cell contains N chromosomes, between any two of which an interchange of parts may occur. If R interchanges occur (which can happen in $\binom{N}{2}^R$ distinct ways), find the probability that exactly m chromosomes will be involved".

Various generalizations of this problem have been considered as e.g. committee problems. A typical generalization is: " R committees are formed from N individuals, the j :th committee has size n_j , the committees are formed by independent simple random sampling, find the distribution of the number of individuals belonging to all committees". This type of problem has also been applied to a certain health problem, see Mantel (1974) and the references given there.

Let us consider the following situation. Consider a finite population of N units. Take R independent simple random samples without replacement of sizes n_1, \dots, n_R . Define $Y_{jk} = 1$, if the k^{th} unit occur in the j^{th} sample, otherwise let $Y_{jk} = 0$ for $j = 1, \dots, R$ and $k = 1, \dots, N$. Consider the $R \times N$ matrix or special contingency table with the Y 's as entries. This matrix has fixed row totals n_1, \dots, n_R

and the different rows are independent random vectors. Let f_1, \dots, f_N be given real functions defined on $\{0,1\}^R$ and consider the random variable:

$$Z_N = \sum_{k=1}^N f_k(Y_{1k}, \dots, Y_{Rk}) .$$

How is Z_N distributed?

In this paper limit distributions of Z_N are derived when $N \rightarrow \infty$. Similar results have been proved by Eicker et al. (1972) using different methods. Some limit results can also be obtained from Theorem 2 in Holst (1973). As an application the limiting distribution of a chi-square statistic proposed in Mantel (1974) is discussed.

Some words about notation. We set, for all j , $p_j = n_j/N$. To state the limit theorems properly we should use an extra index ν , but to facilitate notation we suppress ν . In the following it is always assumed that $N \rightarrow \infty$ and $n_j \rightarrow \infty$ in such a way that

$$Np_j(1 - p_j) \rightarrow +\infty, \quad j = 1, \dots, R .$$

A random variable X with $P(X = 1) = 1 - P(X = 0) = p$ is called $Be(p)$.

The binomial distribution with parameters n and p is abbreviated

$Bin(n, p)$, $N(m, \Sigma)$ is the normal with mean m and variance (matrix)

Σ , $Po(m)$ the Poisson with mean m and $\chi^2(f)$ the chisquare with f

degrees of freedom. The integer part of a real number A is $[A]$. We

write converges in distribution as $\mathfrak{L}(\dots) \rightarrow \dots$. In the following X_{jk}

for $j = 1, \dots, R$ and $k = 1, \dots, N$ will always be independent random variables where X_{jk} is $Be(p_j)$. We set $X_{j\cdot} = \sum_{k=1}^N X_{jk}$. Note that $X_{j\cdot}$ is $Bin(N, p_j)$.

2. The characteristic function

Let X 's and Y 's be defined as above and consider for a given function f the random variables

$$Z = f(Y_{11}, \dots, Y_{RN})$$

and

$$U = f(X_{11}, \dots, X_{RN}) .$$

Theorem 1. The following relation holds

$$E(e^{itZ}) = \alpha_N \cdot \prod_{j=1}^R (Np_j(1-p_j)/2\pi)^{1/2} \cdot \int_{-\pi}^{\pi} \dots \int_{-\pi}^{\pi} E(\exp(itU + i \sum_{j=1}^R \theta_j (X_{j.} - Np_j))) d\theta_1 \dots d\theta_R$$

where

$$\alpha_N = \prod_{j=1}^R \binom{N}{n_j} p_j^{n_j} (1-p_j)^{N-n_j} \cdot (2\pi N p_j (1-p_j))^{1/2}^{-1} .$$

Proof. The conditional distribution of (X_{j1}, \dots, X_{jN}) given $X_{j.} = n_j$ is the same as the distribution of (Y_{j1}, \dots, Y_{jN}) . Therefore we have

$$E(e^{itZ}) = E(e^{itU} | X_{j.} = n_j, j = 1, \dots, R) .$$

The distribution is given by

$$P(Y_{j1} = v_{j1}, \dots, Y_{jN} = v_{jN}) = 1 / \binom{N}{n_j}$$

for $v_{jk} = 0, 1$ and $v_j = \sum_{k=1}^N v_{jk} = n_j$. Furthermore, we have

$$\begin{aligned}
& \int_{-\pi}^{\pi} \cdots \int_{-\pi}^{\pi} E(\exp(itU + i \sum_1^R \theta_j (X_{j.} - Np_j))) d\theta_1 \cdots d\theta_R \\
&= \int_{-\pi}^{\pi} \cdots \int_{-\pi}^{\pi} \sum_{\underline{v}} \exp(itf(\underline{v}) + i \sum_1^R \theta_j (v_j - n_j)) \cdot \\
&\quad \cdot \prod_{j,k} p_j^{v_{jk}} (1-p_j)^{1-v_{jk}} d\theta_1 \cdots d\theta_R = \\
&= \sum_{\underline{v}} \exp(itf(\underline{v})) \prod_{j=1}^R \left(\int_{-\pi}^{\pi} e^{i\theta_j (v_j - n_j)} d\theta_j \cdot p_j^{v_j} (1-p_j)^{N-v_j} \right) = \\
&= \sum_{v_1=n_1} \cdots \sum_{v_R=n_R} \exp(itf(\underline{v})) \cdot (2\pi)^R \prod_1^R \left(P(X_{j.} = n_j) / \binom{N}{n_j} \right) = \\
&= E(e^{itZ}) \cdot (2\pi)^R \prod_1^R P(X_{j.} = n_j),
\end{aligned}$$

from which the assertion follows. ■

Using Stirling's formula we get:

Lemma. If $Np_j(1-p_j) \rightarrow \infty$, all j , then $\alpha_N \rightarrow 1$. If $p_j \rightarrow \gamma_j$, $0 < \gamma_j < 1$, all j , then $\alpha_N = 1 + O(1/N)$.

3. Limit theorems

In this section we consider random variables of the form

$$Z_N = \sum_{k=1}^N f_k(Y_{1k}, \dots, Y_{Rk}).$$

As (X_{1k}, \dots, X_{Rk}) and (Y_{1k}, \dots, Y_{Rk}) have the same distribution, they also have the same moments so

$$E(f_k(X_{1k}, \dots, X_{Rk})) = E(f_k(Y_{1k}, \dots, Y_{Rk})) = \mu_k.$$

Theorem 2. Suppose that there exists a $q_0 < 1$ such that for $q \geq q_0$,

$M = \lfloor Nq \rfloor$ and

$$U_M = \sum_{k=1}^M f_k(X_{1k}, \dots, X_{Rk})$$

we have

$$\mathcal{L} \left(\begin{array}{c} U_M - \sum_{k=1}^M \mu_k \\ \sum_{k=1}^M (X_{1k} - p_1) / (Np_1(1-p_1))^{\frac{1}{2}} \\ \vdots \\ \sum_{k=1}^M (X_{Rk} - p_R) / (Np_R(1-p_R))^{\frac{1}{2}} \end{array} \right) \rightarrow N \left(\begin{array}{c} 0 \\ 0 \\ \vdots \\ 0 \end{array}, \begin{array}{cccccc} A_q & B_{1q} & B_{2q} & \dots & B_{Rq} \\ B_{1q} & q & 0 & \dots & 0 \\ \vdots & \dots & \dots & \dots & \vdots \\ B_{Rq} & 0 & 0 & \dots & q \end{array} \right)$$

where $A_q \rightarrow A_1$, $B_{jq} \rightarrow B_j$, all j , when $q \rightarrow 1$. Then when $N \rightarrow \infty$

$$\mathcal{L}(Z_N - \sum_{k=1}^N \mu_k) \rightarrow N(0, A_1 - \sum_{j=1}^R B_j^2).$$

Proof. Without loss of generality we can suppose that $\mu_k = 0$. Define Z_M

analogously to U_M . Set $X_{j \cdot M} = \sum_{k=1}^M X_{jk}$ and $X'_{j \cdot M} = \sum_{k=M+1}^N X_{jk} = X_{j \cdot} - X_{j \cdot M}$.

Let us also introduce $\sigma_j = (Np_j(1-p_j))^{1/2}$. From Theorem 1 it follows that

$$\begin{aligned} E(e^{itZ_M}) &= \alpha_N \cdot (2\pi)^{-R/2} \cdot \sigma_1 \cdot \dots \cdot \sigma_R \cdot \\ &\cdot \int_{-\pi}^{\pi} \dots \int_{-\pi}^{\pi} E(\exp(itU_M + i \sum_{j=1}^R \theta_j (X_{j \cdot M} - Mp_j))) \cdot \\ &\cdot E(\exp(i \sum_{j=1}^R \theta_j (X'_{j \cdot M} - (N-M)p_j))) d\theta_1 \dots d\theta_R = \\ &= \alpha_N \cdot (2\pi)^{-R/2} \int_{-\pi\sigma_1}^{\pi\sigma_1} \dots \int_{-\pi\sigma_R}^{\pi\sigma_R} E(\exp(itU_M + i \sum_{j=1}^R \psi_j (X_{j \cdot M} - Mp_j)/\sigma_j)) \cdot \\ &\cdot E(\exp(i \sum_{j=1}^R \psi_j (X'_{j \cdot M} - (N-M)p_j)/\sigma_j)) d\psi_1 \dots d\psi_R = \\ &= \alpha_N (2\pi)^{-R/2} \int \dots \int g_M(t, \psi_1, \dots, \psi_R) h_M(\psi_1, \dots, \psi_R) d\psi_1 \dots d\psi_R. \end{aligned}$$

From DeMoivre's theorem we have

$$h_M(\psi_1, \dots, \psi_R) \rightarrow \exp(-\frac{1}{2} \sum_{j=1}^R \psi_j^2 (1-q)) = h(\psi_1, \dots, \psi_R),$$

and it is not difficult to prove that

$$\int |h_M| \rightarrow \int h.$$

From the assumptions we get

$$g_M(t, \psi_1, \dots, \psi_R) \rightarrow \exp(-\frac{1}{2} (t^2 A_q + 2t \sum_{j=1}^R \psi_j B_{jq} + \sum_{j=1}^R \psi_j^2 q)).$$

As $|g_M| \leq 1$ and $\alpha_N \rightarrow 1$, it follows from the extended Lebesgue Convergence Theorem, see Rao (1973), p. 136, that

$$E(e^{itZ_M}) \rightarrow (2\pi)^{-R/2} .$$

$$\begin{aligned} & \int \cdots \int \exp\left(-\frac{1}{2}(t^2 A_q + 2t \sum_1^R \psi_j B_{jq} + \sum_1^R \psi_j^2)\right) d\psi_1 \cdots d\psi_R \\ &= \exp\left(-\frac{1}{2} t^2 \left(A_q - \sum_1^R B_{jq}^2\right)\right) . \end{aligned}$$

Thus we have proved that

$$\mathfrak{L}(Z_M) \rightarrow N\left(0, A_q - \sum_1^R B_{jq}^2\right) .$$

Analogously we prove

$$\mathfrak{L}(Z_N - Z_M) \rightarrow N\left(0, A_1 - A_q - \sum_1^R (B_j - B_{jq})^2\right) .$$

The assumptions imply that

$$A_q - \sum_1^R B_{jq}^2 \rightarrow A_1 - \sum_1^R B_j^2$$

and

$$A_1 - A_q - \sum_1^R (B_j - B_{jq})^2 \rightarrow 0 .$$

Using the argument by LeCam (1958), p. 13-14, we obtain

$$\mathfrak{L}(Z_N) \rightarrow N\left(0, A_1 - \sum_1^R B_j^2\right) . \quad \blacksquare$$

When the same function f_N is used for each column then we get a simple and useful theorem.

Theorem 3. Suppose that for some random vector (U, V_1, \dots, V_R) and $\sigma_j = (Np_j(1 - p_j))^{1/2}$ we have

$$\mathfrak{L} \begin{pmatrix} U_N - N \cdot \mu \\ (X_{1.} - Np_1)/\sigma_1 \\ \vdots \\ (X_{R.} - Np_R)/\sigma_R \end{pmatrix} \rightarrow \mathfrak{L} \begin{pmatrix} U \\ V_1 \\ \vdots \\ V_R \end{pmatrix}.$$

Then the infinitely divisible random vector has the characteristic function

$$E(e^{itU + \sum_{j=1}^R s_j V_j}) = H(t, \underline{s}) = \phi(t) \cdot \exp\left(-\frac{1}{2} t^2 A + 2 \sum_{j=1}^R t s_j B_j + \sum_{j=1}^R s_j^2\right),$$

where

$$E(e^{itU}) = \phi(t) \cdot e^{-\frac{1}{2} t^2 A}$$

and ϕ has no normal component. Furthermore

$$\mathfrak{L}(Z_N - N\mu) \rightarrow \mathfrak{L}(Z)$$

where the random variable Z has the characteristic function

$$E(e^{itZ}) = \phi(t) \cdot \exp\left(-\frac{1}{2} t^2 \left(A - \sum_{j=1}^R B_j^2\right)\right).$$

Proof. The first part of the assertion follows from classical limit theorems, cf. LeCam (1958), p. 8.

Without loss of generality let us assume that $\mu = 0$. We observe that with $M = Nq$, $0 < q < 1$,

$$E(\exp(it U_M + i \sum_1^R s_j (X_{j \cdot M} - Mp_j)/\sigma_j)) \rightarrow (H(t, \underline{s}))^q,$$

using the notation of the previous proof. The assertion then follows as in Theorem 2. ■

Remark 1. If $p_j \rightarrow \gamma_j$, $0 < \gamma_j < 1$, all j , then the limit distribution has no non-normal component, because $f_N(X_{1k}, \dots, X_{Rk})$ can only take at most 2^R different values. Hence non-normal limits can only occur when some $p_j \rightarrow 0$ or 1 .

Remark 2. Many of the theorems in Eicker et al. (1972) are special cases of Theorem 3.

The case with no normal component is particularly simple.

Theorem 4. Suppose that

$$\mathfrak{L}(U_N - N\mu) \rightarrow \mathfrak{L}(U),$$

where U has no normal component. Then

$$\mathfrak{L}(Z_N - N\mu) \rightarrow \mathfrak{L}(U).$$

Proof. As $U_N - N\mu$ and $(X_{j \cdot} - Np_j)/\sigma_j$, $j = 1, \dots, R$, converges in distribution it follows that we can from every subsequence of the vectors in Theorem 3 select a convergent subsequence. For such a convergent subsequence we can apply Theorem 3. As U had no normal component we have $A = 0$ and so $B_1 = \dots = B_R = 0$. Thus the limiting characteristic function is just $\phi(t)$. As this limit does not depend on the particular subsequence it follows that

$$E(\exp(it(U_N - N\mu))) \rightarrow \phi(t),$$

which proves the theorem. ■

If we consider sequences such that $f_1 = \dots = f_N = f$ and $p_j = \gamma_j$, $0 < \gamma_j < 1$, independent of N , then the following local limit theorem hold.

Theorem 5. Suppose that the random variable $f(Y_{11}, \dots, Y_{R1})$ is integer one-lattice. Then uniformly in ν when $N \rightarrow \infty$

$$P\left(\sum_{k=1}^N f(Y_{1k}, \dots, Y_{Rk}) = \nu\right) \cdot (N\sigma^2(1 - \rho^2))^{1/2} \cdot (2\pi)^{1/2} \\ - \exp(-(\nu - N\mu)^2 / 2N\sigma^2(1 - \rho^2)) \rightarrow 0,$$

where

$$\mu = E f(Y_{11}, \dots, Y_{R1}), \\ \sigma^2 = \text{Var } f(Y_{11}, \dots, Y_{R1})$$

and

$$\rho^2 = \sum_{j=1}^R (\text{Cov}(f(Y_{11}, \dots, Y_{R1}), Y_{j1}))^2 / \sigma^2 \gamma_j (1 - \gamma_j).$$

Proof. Using Theorem 1 and the inversion formula for characteristic functions we obtain

$$P\left(\sum_{k=1}^N f(Y_{1k}, \dots, Y_{Rk}) = \nu\right) = \alpha_N \cdot \sigma_1 \cdot \dots \cdot \sigma_R \cdot (2\pi)^{-(R+2)/2} \cdot \\ \cdot \int_{-\pi}^{\pi} \dots \int_{-\pi}^{\pi} E(\exp(it U_N + i \sum_{j=1}^R \theta_j (X_j - Np_j))) e^{-it\nu} dt d\theta_1 \dots d\theta_R \\ = \alpha_N \cdot \sigma_1 \cdot \dots \cdot \sigma_R \cdot (2\pi)^{R/2} \cdot P(U_N = \nu, X_j = n_j, j = 1, \dots, R) = \\ = \alpha_N \cdot P(\nu, N, n_1, \dots, n_R).$$

Using a multidimensional local limit theorem by Rvačeva (1954), p. 202, we have uniformly in ν

$$P(v, N, n_1, \dots, n_R) \cdot (2\pi N\sigma^2(1 - \rho^2))^{1/2} - \\ - \exp(- (v - N\mu)^2 / 2N\sigma^2(1 - \rho^2) + 0) \rightarrow 0 .$$

(Note that (Y_{11}, \dots, Y_{R1}) and (X_{11}, \dots, X_{R1}) have the same distribution and therefore the same moments.) Combining the last two expressions and using the lemma of Section 2 proves the assertion. ■

4. Applications

Example 1. Suppose that the number of columns with no zeros are of interest. In the committee problem this corresponds to the number of persons which are members of all committees. The appropriate function for this case is

$$f(Y_1, \dots, Y_R) = Y_1 \cdot \dots \cdot Y_R.$$

Suppose now that $N, n_1, \dots, n_R \rightarrow \infty$ so that $Np_1 \cdot \dots \cdot p_R \rightarrow \lambda, 0 < \lambda < \infty$.

We have

$$P(f(X_{11}, \dots, X_{R1}) = 1) = p_1 \cdot \dots \cdot p_R$$

so from the usual Poisson approximation of the binomial it follows that

$$\mathfrak{L}\left(\sum_{k=1}^N f(X_{1k}, \dots, X_{Rk})\right) \rightarrow \text{Po}(\lambda).$$

Hence by Theorem 4 the number of columns with no zero is in the limit $\text{Po}(\lambda)$ - distributed.

Example 2. In connection with a health research problem Mantel (1974) proposes tests for differences between columns. Essentially using the sample variance of the column totals is suggested as a test-statistic. In our notation Mantel's statistic could be written

$$Z_N = (N - 1) \left(\sum_{k=1}^N \left(\sum_{j=1}^R (Y_{jk} - p_j) \right)^2 \right) / N \sum_{j=1}^R p_j (1 - p_j).$$

Using normal random variables Mantel approximates Z_N 's distribution by $\chi^2(N - 1)$. A limit distribution of Z_N can be obtained from

Theorem 3 if $n_j/N \rightarrow \gamma_j$, $0 < \gamma_j < 1$. The limit law has no nonnormal component and after some calculations one finds

$$A - \sum_1^R B_j^2 = 2\left(\left(\sum_1^R \gamma_j(1 - \gamma_j)\right)^2 - \sum_1^R (\gamma_j(1 - \gamma_j))^2\right).$$

We may note that in fact the exact mean and variance are

$$EZ_N = N - 1$$

$$\text{Var } Z_N = 2(N - 1) \cdot \left(1 - \frac{\sum_1^R (p_j(1 - p_j))^2}{\left(\sum_1^R p_j(1 - p_j)\right)^2}\right).$$

By Theorem 3 we can state

$$\mathfrak{L}\left(\frac{Z_N - (N - 1)}{(2(N - 1))^{1/2}}\right) \rightarrow N(0, 1 - K)$$

where

$$K = \frac{\sum_1^R (\gamma_j(1 - \gamma_j))^2}{\left(\sum_1^R \gamma_j(1 - \gamma_j)\right)^2}.$$

So the limit distribution has smaller variance than the chi-square approximation indicates. By the Cauchy-Schwarz inequality we get $K \geq 1/R$ with equality if and only if $\gamma_1 = \dots = \gamma_R$. Unless R is big and the γ 's are not too unequal this approximation is likely to give a conservative test.

Mantel also discusses a $\chi^2(1)$ approach. This is actually the same as using the normal approximation suggested by the limit law above. As Mantel points out, the distribution of Z_N is right skew in typical cases. Thus the normal approximation may be inappropriate. A right skew distribution having the right mean, variance and limit law is $(1 - K) \cdot \chi^2((N - 1)/(1 - K))$. One may expect that this distribution better approximates that of Z_N than any of the other approximations.

REFERENCES

- [1] Eicker, P. J., Siddiqui, M. M., and Mielke, P. W. (1972). A matrix occupancy problem. Ann. Math. Statist. 43, 988-996.
- [2] Feller, W. (1968). An introduction to probability theory and its applications. 3rd ed., Wiley, New York.
- [3] Holst, L. (1973). Some limit theorems with applications in sampling theory. Ann. Statist. 1, 644-658.
- [4] LeCam, L. (1958). Un théorème sur la division d'un intervalle par des points pris au hasard. Publ. Inst. Statist. Univ. Paris 7, 7-16.
- [5] Mantel, N. (1974). Approaches to a health occupancy problem. Biometrics 30, 355-362.
- [6] Rao, C. R. (1973). Linear statistical inference and its applications. 2nd ed., Wiley, New York.
- [7] Rvaceva, E. L. (1954). On domains of attraction of multidimensional distributions. Select. Transl. Math. Statist. and Probability 2, 183-205.

UNCLASSIFIED

SECURITY CLASSIFICATION OF THIS PAGE (When Data Entered)

REPORT DOCUMENTATION PAGE		READ INSTRUCTIONS BEFORE COMPLETING FORM
1. REPORT NUMBER 1663 ✓	2. GOVT ACCESSION NO.	3. RECIPIENT'S CATALOG NUMBER
4. TITLE (and Subtitle) SOME MATRIX OCCUPANCY PROBLEMS WITH DICHOTOMOUS ENTRIES ✓		5. TYPE OF REPORT & PERIOD COVERED Summary Report - no specific reporting period
		6. PERFORMING ORG. REPORT NUMBER
7. AUTHOR(s) Lars Holst		8. CONTRACT OR GRANT NUMBER(s) DAAG29-75-C-0024 ✓
9. PERFORMING ORGANIZATION NAME AND ADDRESS Mathematics Research Center, University of ✓ 610 Walnut Street Wisconsin Madison, Wisconsin 53706		10. PROGRAM ELEMENT, PROJECT, TASK AREA & WORK UNIT NUMBERS
11. CONTROLLING OFFICE NAME AND ADDRESS U. S. Army Research Office P. O. Box 12211 Research Triangle Park, North Carolina 27709		12. REPORT DATE August 1976
		13. NUMBER OF PAGES 15
14. MONITORING AGENCY NAME & ADDRESS (if different from Controlling Office)		15. SECURITY CLASS. (of this report) UNCLASSIFIED
		15a. DECLASSIFICATION/DOWNGRADING SCHEDULE
16. DISTRIBUTION STATEMENT (of this Report) Approved for public release; distribution unlimited.		
17. DISTRIBUTION STATEMENT (of the abstract entered in Block 20, if different from Report)		
18. SUPPLEMENTARY NOTES		
19. KEY WORDS (Continue on reverse side if necessary and identify by block number) matrix occupancy problems limit theorems committee problems contingency tables dichotomous variables		
20. ABSTRACT (Continue on reverse side if necessary and identify by block number) An $R \times N$ matrix is generated in the following way. In each row a pre-determined number of positions are randomly assigned the value 1; the remaining positions are assigned the value 0. For each column a real valued function of the elements is given. In this paper the sum of the values of these functions is studied when $N \rightarrow \infty$. The results can be applied to e.g. "committee" problems and contingency tables of 0-1-variables. <i>approaches limit of infinity</i>		

DD FORM 1473
1 JAN 73

EDITION OF 1 NOV 65 IS OBSOLETE

UNCLASSIFIED

SECURITY CLASSIFICATION OF THIS PAGE (When Data Entered)