

AD-A033 411

ARMED FORCES RADIOBIOLOGY RESEARCH INST BETHESDA MD
A METHOD OF MEASURING THYROID BURDEN OF I125.(U)
JUN 76 W R WEBBER, R L DONOVAN
AFRRI-TN76-5

F/G 6/18

UNCLASSIFIED

NL

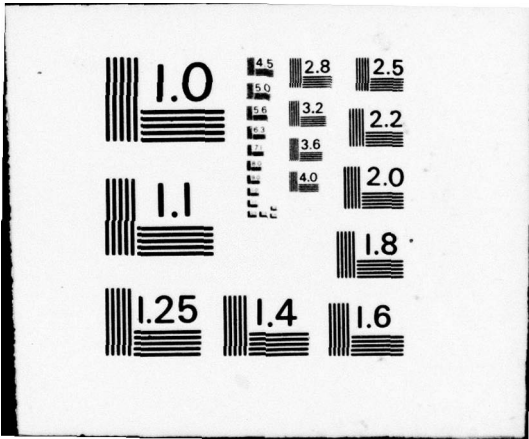
1 of 1
ADA033411



END

DATE
FILMED

2 - 77



Handwritten signature and circled number 12

AFRRI TN76-5

**AFRRI
TECHNICAL
NOTE**

AFRRI TN76-5

ADA033411

**A METHOD OF MEASURING THYROID
BURDEN OF ^{125}I**

W. R. Webber
R. L. Donovan

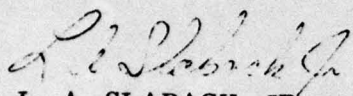
June 1976

**DDC
RECEIVED
DEC 17 1976
RECEIVED
A**

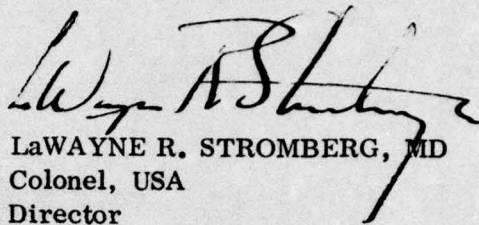
Approved for public release; distribution unlimited

**ARMED FORCES RADIOBIOLOGY RESEARCH INSTITUTE
Defense Nuclear Agency
Bethesda, Maryland 20014**

REVIEWED AND APPROVED



L. A. SLABACK, JR.
Head
Radiological Safety Department



LAWAYNE R. STROMBERG, MD
Colonel, USA
Director

UNCLASSIFIED

SECURITY CLASSIFICATION OF THIS PAGE (When Data Entered)

REPORT DOCUMENTATION PAGE		READ INSTRUCTIONS BEFORE COMPLETING FORM
1. REPORT NUMBER AFRRI-TN76-5	2. GOVT ACCESSION NO.	3. RECIPIENT'S CATALOG NUMBER
4. TITLE (and Subtitle) A METHOD OF MEASURING THYROID BURDEN OF ¹²⁵ I	5. TYPE OF REPORT & PERIOD COVERED	
7. AUTHOR(s) W. R. Webber and R. L. Donovan	6. PERFORMING ORG. REPORT NUMBER	
9. PERFORMING ORGANIZATION NAME AND ADDRESS Armed Forces Radiobiology Research Institute Defense Nuclear Agency (AFRRI) Bethesda, Maryland 20014	8. CONTRACT OR GRANT NUMBER(s)	
11. CONTROLLING OFFICE NAME AND ADDRESS Director Defense Nuclear Agency (DNA) Washington, D. C. 20305	10. PROGRAM ELEMENT, PROJECT, TASK AREA & WORK UNIT NUMBERS NWED QAXM C911	12. REPORT DATE June 1976
14. MONITORING AGENCY NAME & ADDRESS (if different from Controlling Office)	13. NUMBER OF PAGES 14	15. SECURITY CLASS. (of this report) UNCLASSIFIED
16. DISTRIBUTION STATEMENT (of this Report) Approved for public release; distribution unlimited		15a. DECLASSIFICATION/DOWNGRADING SCHEDULE
17. DISTRIBUTION STATEMENT (of the abstract entered in Block 20, if different from Report)		
18. SUPPLEMENTARY NOTES		
19. KEY WORDS (Continue on reverse side if necessary and identify by block number)		
20. ABSTRACT (Continue on reverse side if necessary and identify by block number) Laboratory workers producing ¹²⁵ I labeled compounds may ingest or inhale small quantities of radioactive iodine which is deposited preferentially in the thyroid. Measurement of the thyroid burden is required to quantify the radiation dose to the individual and to provide early warning of possible health hazards. We have developed a rapid, accurate method of measuring thyroid burden using an Anger camera and pulse height analysis techniques. The procedure requires 2 to 3 minutes,		

DD FORM 1 JAN 73 1473

EDITION OF 1 NOV 65 IS OBSOLETE
S/N 0102-014-6601

UNCLASSIFIED

SECURITY CLASSIFICATION OF THIS PAGE (When Data Entered)

was developed 034700

over
mt

UNCLASSIFIED

SECURITY CLASSIFICATION OF THIS PAGE(When Data Entered)

20. ABSTRACT (continued)

1125

equipment commonly available in a nuclear medicine department, and causes no discomfort for the subject. The minimum detectable amount of ^{125}I has been found to be ≈ 1.0 nCi with a counting time of 100 seconds. The linearity of the method has been measured using an ORINS thyroid phantom and sources traceable to the NBS. The method is in regular use at the AFRRRI and some results obtained from this use are presented.

approx

UNCLASSIFIED

SECURITY CLASSIFICATION OF THIS PAGE(When Data Entered)

PREFACE

The authors wish to thank G. J. Adler who contributed to the idea of using the gamma camera for measuring thyroid burden. Thanks also to H. E. Bourne and K. G. Mendenhall for their assistance in collecting the data, and special thanks to L. A. Slaback without whose prodding this paper would not have been written.

ACQUISITION	
RTIS	
BOE	
URA	
...	
BY	
...	
...	
A	

TABLE OF CONTENTS

	Page
Preface	1
Introduction	5
Method	5
Experience	9
Conclusions	10
References	11

LIST OF FIGURES

Figure 1. Camera with pinhole collimator attached and insert removed	6
Figure 2. Relative efficiencies versus position for 22-keV x ray from a point source of ^{109}Cd	7
Figure 3. Spectrum of ~ 10 nCi of ^{125}I from worker taken using pinhole collimator with insert removed at distance of 11.4 cm and 100-sec counting time	8
Figure 4. Spectrum of 30 nCi of ^{125}I in ORINS thyroid phantom and background with pinhole collimator insert removed	9

INTRODUCTION

^{125}I is routinely used at the AFRRI in various experimental tasks. We have developed a method for measuring the thyroid burden of ^{125}I in personnel exposed during these procedures using an Anger type gamma camera as a detector of the Te x rays emitted at 27 and 31 keV² in the decay of ^{125}I . This detector system allows rapid measurement while retaining the capability of detecting nanocurie amounts of ^{125}I in the thyroid. We are thus able to accurately evaluate the thyroid burden of our personnel while causing a minimum of discomfort and inconvenience to the individual.

METHOD

The critical organ for ^{125}I uptake is the thyroid.⁴ It has been shown¹ that within 2 days of exposure to ^{125}I , more than 95 percent of the total body burden is present in the thyroid. At any subsequent time, a measurement of the ^{125}I activity in the thyroid is a reliable indication of the final thyroid burden.

This activity was measured using a Searle Radiographics Pho Gamma HP scintillation camera. The summed energy pulse from the camera was routed to the input of the X ADC of a General Electric MED-II computer system which then functioned as a multichannel analyzer with a 256-channel conversion gain. A standard pinhole collimator was attached to the camera. The lead insert defining the pinhole was removed, leaving a collimator having an aperture 7.6 cm in diameter at a distance of 14.0 cm from the 25.4 x 1.3 cm NaI(Tl) crystal (Figure 1). It was necessary to retain some collimation because the camera was located in an operational nuclear medicine laboratory and the background observed with an uncollimated detector was unacceptably high. It was also observed that some subjects had surface contamination of ^{125}I on the face and hands. The collimator, which limited the field of view of the detector to the thyroid region, reduced the interference from this contamination.

The sensitivity of the system was measured as a function of vertical and lateral position using the 22-keV x ray from a point source of ^{109}Cd . A fit to

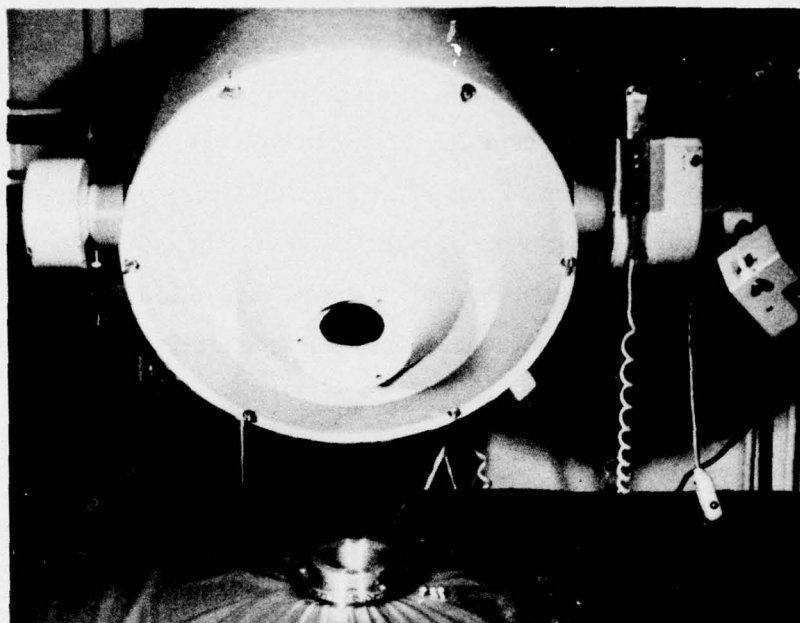


Figure 1. Camera with pinhole collimator attached and insert removed

these data was performed and isoefficiency curves were calculated in 10 percent increments as shown in Figure 2. From these data a source to collimator distance of 12.7 cm was chosen giving a range of sensitivities of ± 15 percent over the thyroid.

The correlation of observed count rate versus activity was measured as a further validation of the method. Three ^{125}I sources, having activities of 8.1, 8.8, and 118.8 nCi, were prepared using National Bureau of Standards calibrated standard reference materials (SRM-2030-74). An ORINS thyroid phantom was placed under the detector in the standard position and counted without the sources for 100 seconds to obtain a background. This procedure was repeated with each source in place, then with both lower acting sources in place in the phantom giving four observed count rates to correlate with the known activities. These data were subjected to linear regression analysis yielding a correlation coefficient of 0.99.

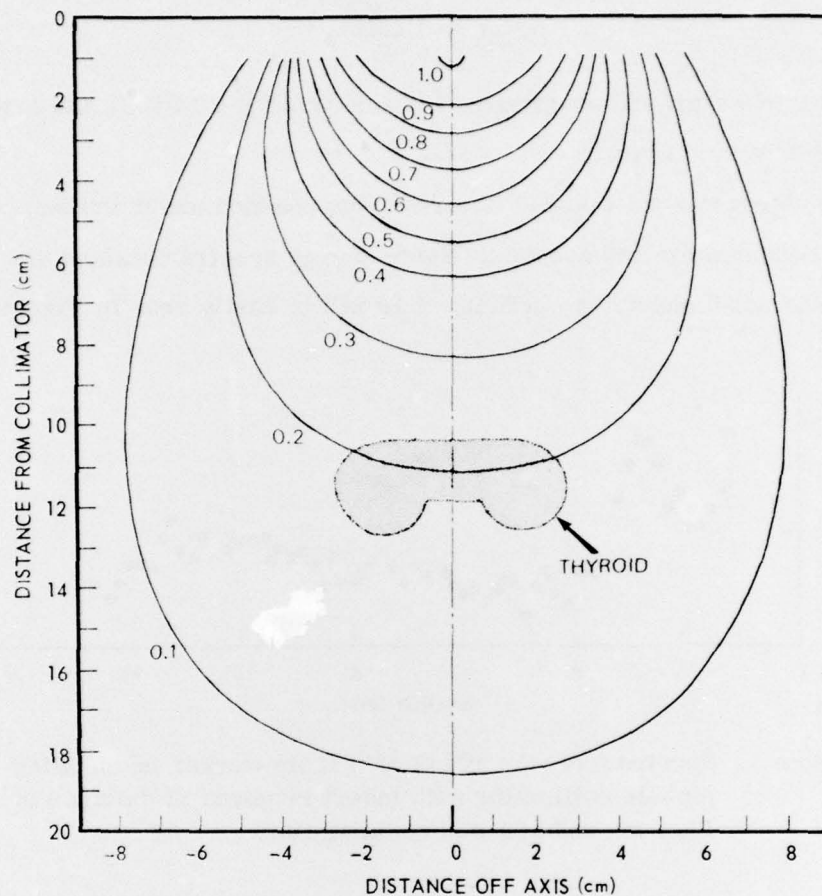


Figure 2. Relative efficiencies versus position for 22-keV x ray from a point source of ^{109}Cd

To insure the accuracy and reproducibility of the activity measurements, the following operations were performed each time the apparatus was prepared for use. Two ^{125}I standards were placed in the ORINS thyroid phantom, positioned at the predetermined source-detector distance, and counted for 100 seconds. A background measurement was obtained by removing the standards and repeating the counting procedure. After decay correction, the results of these two measurements were used to calculate the calibration factor in counts per minute per nanocurie, and the minimum detectable amount given by

$$\text{MDA} = \frac{3 \sqrt{B/t}}{E}$$

where B is the background count rate, t is the counting interval, and E is the ratio of count rate to activity.

The subject was then placed in a reclining position under the detector assembly and counted for 100 seconds. Some energy spectra obtained are presented in Figures 3 and 4. An activity of 10 nCi is easily seen in Figure 3 and

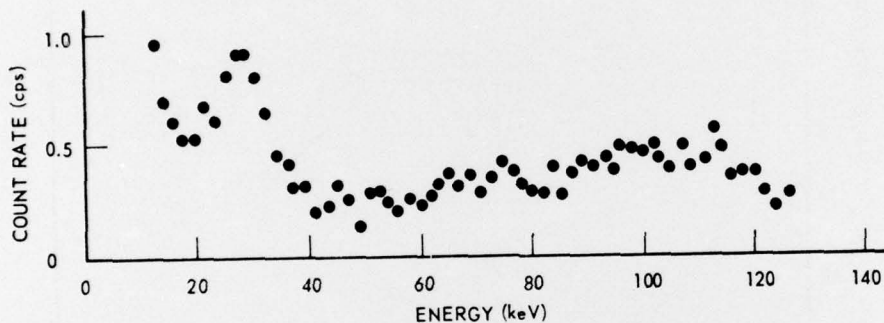


Figure 3. Spectrum of ~10 nCi of ^{125}I from worker taken using pinhole collimator with insert removed at distance of 11.4 cm and 100-sec counting time

the similarity of the spectrum from a human subject in Figure 3 and that from the phantom in Figure 4 provides some increased confidence in the calibration method. From spectra such as that in Figure 3, a thyroid activity may be calculated using

$$A = \frac{A_p}{P-B} (S-B)$$

where A is the ^{125}I activity in the subject, A_p is the ^{125}I activity in the phantom, P is the gross count rate of the phantom, B is the background count rate, and S is the gross count rate of the subject.

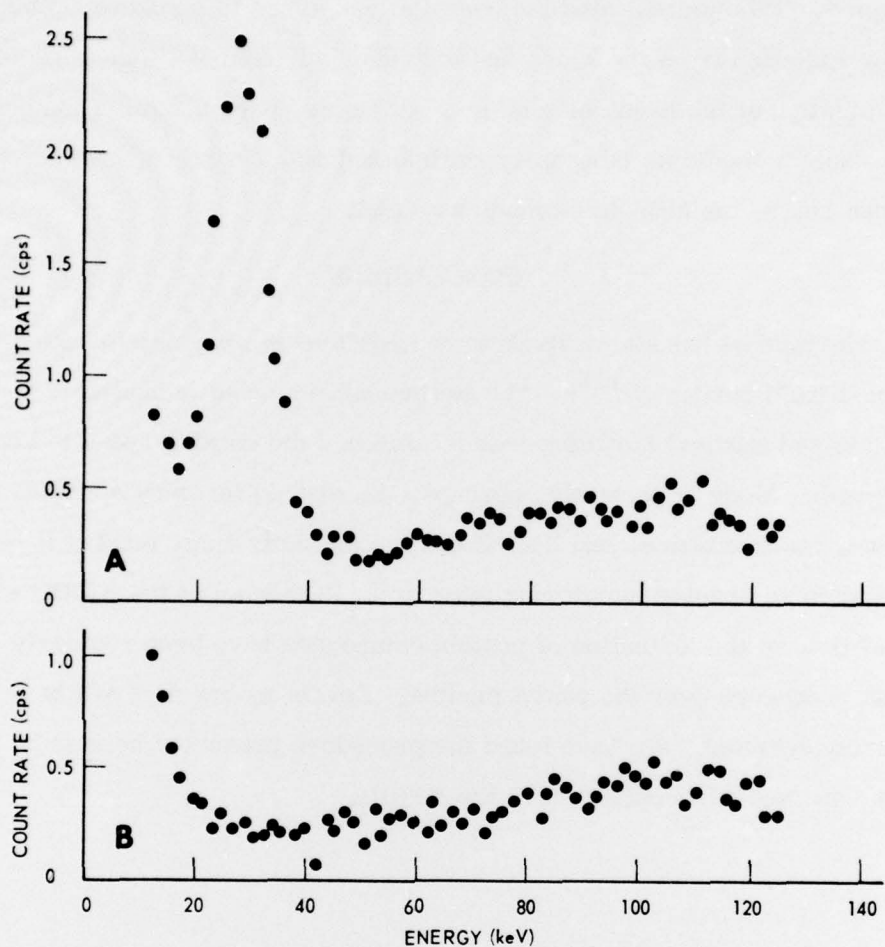


Figure 4. A. Spectrum of 30 nCi of ^{125}I in ORINS thyroid phantom at distance of 11.4 cm and 100-sec counting time. B. Typical 100-sec background with pinhole collimator insert removed.

EXPERIENCE

This system has been in use now for several months at the AFRRI. Minimum detectable amounts (MDA) as low as 1 nCi have been calculated for a 100-sec count. This value is considerably below the maximum permissible thyroid burden of $571 \text{ nCi} (15 \text{ rad } \text{y}^{-1}) / (3.0 \times 10^{-6} \text{ rad} \cdot \text{nCi}^{-1} \cdot \text{h}^{-1} \times 24 \text{ h} \cdot \text{d}^{-1} \times 365 \text{ d} \cdot \text{y}^{-1})$.³ An alternate method of using the camera without any collimator was

attempted. This necessitated the use of a lead apron to shield the camera from scatter radiation from the body, and to reduce any contributions from low level contamination of the hands or clothing. However, variable radiation conditions in the nuclear medicine laboratory contributed significantly to background and at times raised the MDA to as much as 5 nCi.

CONCLUSIONS

The method has shown itself to be sensitive and precise for the determination of thyroid burden of ^{125}I . The equipment employed is available in many hospitals and medical facilities thus minimizing the capital outlay to begin such a program. More importantly, perhaps, the method involves a minimum of discomfort, inconvenience, and loss of time to the individual, making it practical to maintain an ongoing monitoring program. Personnel at the AFRRRI who have participated in the iodination of protein compounds have been regularly checked by this procedure over the past 8 months. Levels as low as 2 nCi have been positively detected. We have found the procedure presented here to be a satisfactory one and will continue it at the AFRRRI.

REFERENCES

1. Hodges, H. D., Morris, A. C., Jr. and Gibbs, W. D. Correlation of thyroid uptake with whole-body retention measurements. *J. Nucl. Med. Tech.* 3:72-75, 1975.
2. Medical Internal Radiation Dose Committee (MIRD), Society of Nuclear Medicine, Pamphlet No. 10. Radionuclide decay schemes and nuclear parameters for use in radiation-dose estimation, September 1975.
3. Medical Internal Radiation Dose Committee (MIRD), Society of Nuclear Medicine, Pamphlet No. 11. "s", Absorbed dose per unit cumulated activity for selected radionuclides and organs, October 1975.
4. National Bureau of Standards Handbook No. 69. Maximum permissible body burdens and maximum permissible concentrations of radionuclides in air and in water for occupational exposure, June 1959.