

AD-A035 897

TEXAS UNIV AT AUSTIN APPLIED RESEARCH LABS  
QUARTERLY PROGRESS REPORT NUMBER 2, 1 JULY-30 SEPTEMBER 1971.(U)  
NOV 71

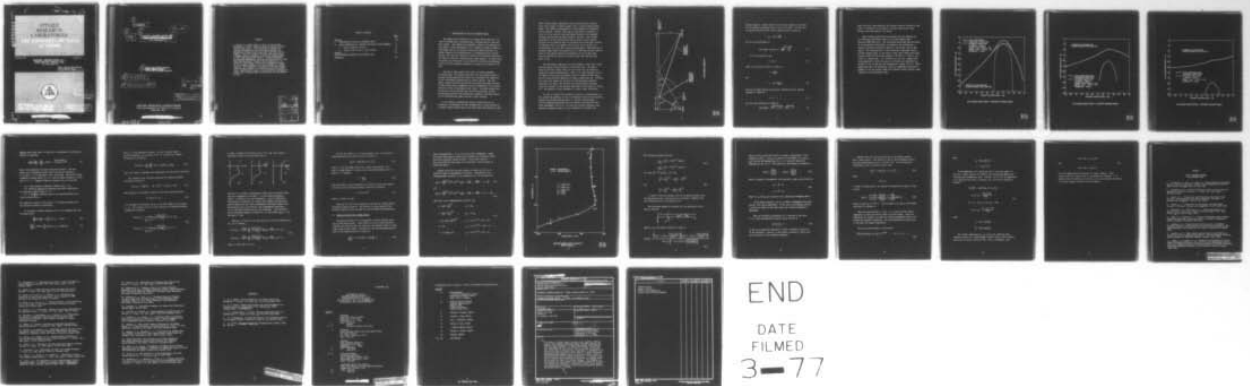
N00024-71-C-1266

F/G 20/1

NL

UNCLASSIFIED

| OF |  
AD  
A035897



END  
DATE  
FILMED  
3-77

ADA 035897 001907

*Good*

MOST Project -2

*(Handwritten mark)*

# APPLIED RESEARCH LABORATORIES

8 November 1971

Copy No. 1

QUARTERLY PROGRESS REPORT NO. 2  
UNDER CONTRACT N00024-71-C-1266  
1 July - 30 September 1971

NAVAL SHIP SYSTEMS COMMAND  
Contract N00024-71-C-1266  
Proj. Ser. No. SF 11552002, Task 8118



D D C  
RECEIVED  
NOV 23 1971  
RESERVED  
*(Handwritten signature)*

STATEMENT A  
Not for public release;  
Security Restricted

001907  
*(Handwritten mark)*

~~720121-0176~~

720121-0176

720121-0176

11

8 November 1971

12

33p.

6

QUARTERLY PROGRESS REPORT No. 2  
~~UNDER CONTRACT N00024-71-C-1266~~  
1 July - 30 September 1971 •

Number

15

NAVAL SHIP SYSTEMS COMMAND  
~~Contract N00024-71-C-1266~~  
Proj. Ser. No. SF 11552002, Task 8118

16 F11552

17 SF11552002

RECEIVED  
FEB 28 1977  
RECEIVED  
A

DISTRIBUTION STATEMENT A  
Approved for public release;  
Distribution Unlimited

APPLIED RESEARCH LABORATORIES  
THE UNIVERSITY OF TEXAS AT AUSTIN  
AUSTIN, TEXAS 78712

404434

720121-0176

413

ABSTRACT

In Section I a status report is given on the possible verification of ARL's forward scattering theory with data from the sea surface. The literature on forward and specular scattering has been thoroughly examined. No appropriate forward scatter data were found from the sea surface. Due to the lack of available sea surface data, a forward scatter experiment is presently being proposed at ARL's Lake Travis Test Station. A brief discussion and proposed experimental setup are described herein, along with some theoretical forward scatter predictions. In Section II the acoustic surface duct propagation problem for an irregular boundary is solved in terms of a contour integral. The roughness is incorporated into the boundary value problem by means of an effective reflection coefficient. Application is made to the surface duct transmission problem for a velocity-depth variation given by the Epstein profile.

ACCESSION NO.		
NTIS	FROM SOURCE <input checked="" type="checkbox"/>	
DOC	REF SOURCE <input type="checkbox"/>	
UNCLASSIFIED	<input type="checkbox"/>	
<i>Scatter on file</i>		
NO. _____		
EXPLANATION/AVAILABILITY CODE		
DISC.	AVAIL. CODE/ SPECIF.	
A		

TABLE OF CONTENTS

	<u>Page</u>
ABSTRACT	iii
I. VERIFICATION OF THE ARL SCATTERING MODEL	1
II. SOUND PROPAGATION IN A SURFACE DUCT WITH A ROUGH BOUNDARY	9
A. Green's Function Solution	9
B. Epstein Profile with a Rough Surface	14
APPENDIX	23
LIST OF REPORTS OBTAINED FOR SCATTERING DATA	
REFERENCES	29

## I. VERIFICATION OF THE ARL SCATTERING MODEL

The search in the literature for forward scattering data to be used to validate ARL's scattering model continued and was completed this quarter. The complete bibliography is given in the appendix of this report. The bibliography is not a complete listing of papers on scattering from the sea surface; theoretical papers and those concerned primarily with backscattering or reverberation were omitted. However, the list does represent a closed set of articles and reports on forward or specular scattering from rough surfaces. In other words, the reports are extensively cross-referenced within the bibliography itself, with few extraneous references to papers not included in the list.

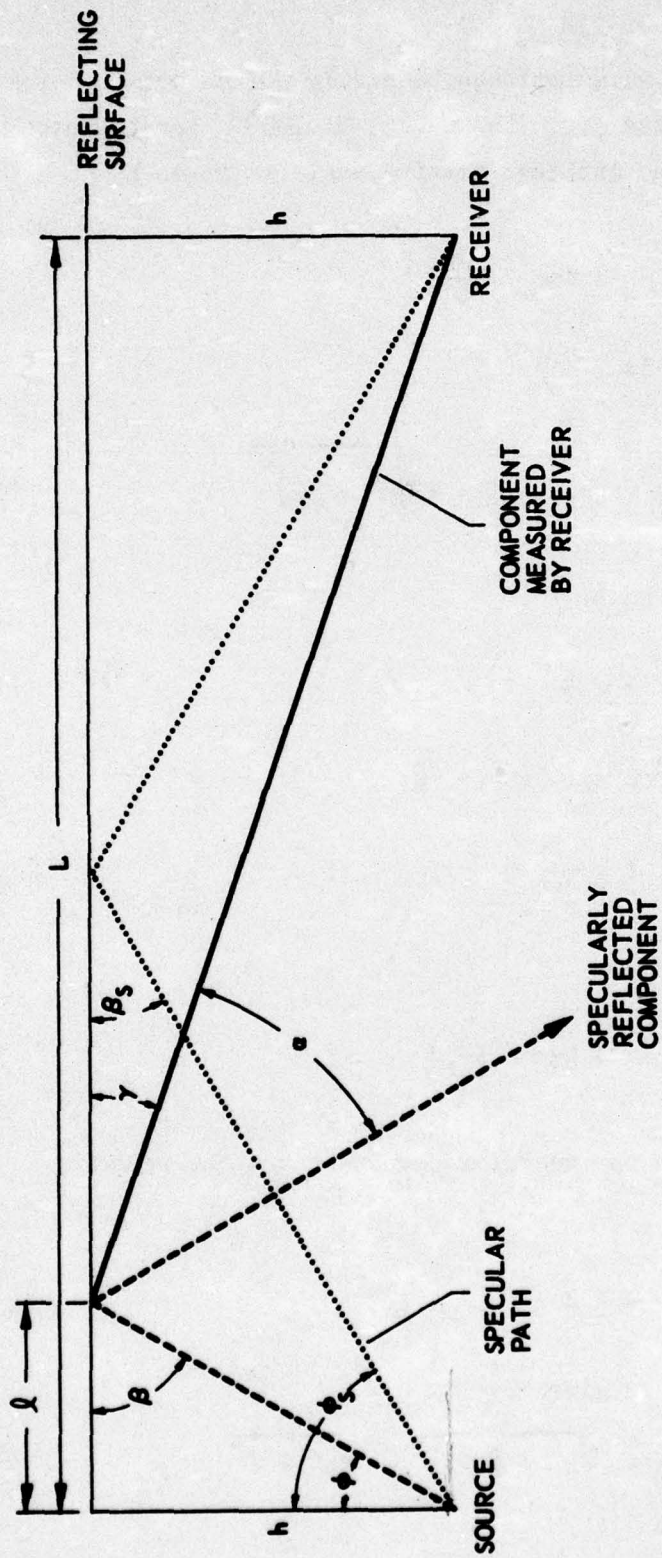
Very few of these reports were found to contain pertinent scattering data. The reports and papers that did present forward or specular scattering data were found to be unsuitable for comparison to ARL's theoretical predictions for several reasons. The most common reasons were that the data had been taken from model surfaces or that certain vital parameters (such as measurements of the surface statistics) were not included in the report. The model surface data in some cases were quite good but were rejected because the ARL scattering predictions have already been compared, with good results, to the scattering data taken from ARL's model surfaces.

In the absence of appropriate forward scatter data in the literature, an experiment has been designed and is being carried out to obtain forward scatter data at the Lake Travis Test Station of ARL.

Usual forward scatter experiments involve measuring the scattered field over a range of receiver angles with a fixed incident grazing angle. This series of measurements is then repeated for different incident angles. However, this type of experiment is difficult to carry out in an ocean or lake environment because of the changing receiver position and the large distances involved. More precise measurements of the incident and receiver angles and the related distances can be obtained when the scattered field from model surfaces is measured, where, for example, the receiver can be placed on a rotating boom, as in the ARL scattering experiments. The difficulty of measuring these angles and distances and of obtaining accurate measurements of the surface statistical parameters are two of the prime factors limiting the amount of forward scatter data that has been taken at sea.

The Lake Travis experiment has been designed so that the receiver position remains fixed throughout a single data run. The source position must also remain fixed, but the source will be rotated to change the incident grazing angle. Thus, it is only necessary to know the depth of the source and receiver, the tilt angles of the source, and the source-receiver separation to make a single data run. Rotating the source will change the direction of the specularly reflected component, and, hence, the receiver will assume several different angles with respect to the specular direction in the course of a single run. The geometry of this experiment is shown in Dwg. AS-71-1095.

In order to convert the theoretical formulas in the ARL model to this particular geometry, it will be necessary to find the new relation between the incident grazing angle,  $\beta$ , and the receiver angle,  $\gamma$ . Also the changing pathlengths must be correctly accounted for (the total pathlength, as well as the source and receiver distances, were previously assumed constant for any combination of incident and



SCATTERING GEOMETRY

receiver angles). These relations can be easily worked out in terms of the distances and angles given in Dwg. AS-71-1095. For the case of specular reflection the incident grazing angle is given by

$$\beta_s = \tan^{-1} \left( \frac{2h}{L} \right) ,$$

and the total pathlength is

$$\text{pathlength (specular)} = 2\sqrt{h^2 + \left(\frac{L}{2}\right)^2} . \quad (1)$$

For the nonspecular case,

$$\beta = \frac{\pi}{2} - \phi , \quad (2)$$

where  $\phi$  is the known source tilt angle, so

$$l = \frac{h}{\tan \beta} ,$$

and

$$\gamma = \tan^{-1} \left( \frac{h}{L-l} \right) . \quad (3)$$

Finally the angle between the specular component and the received component is given by

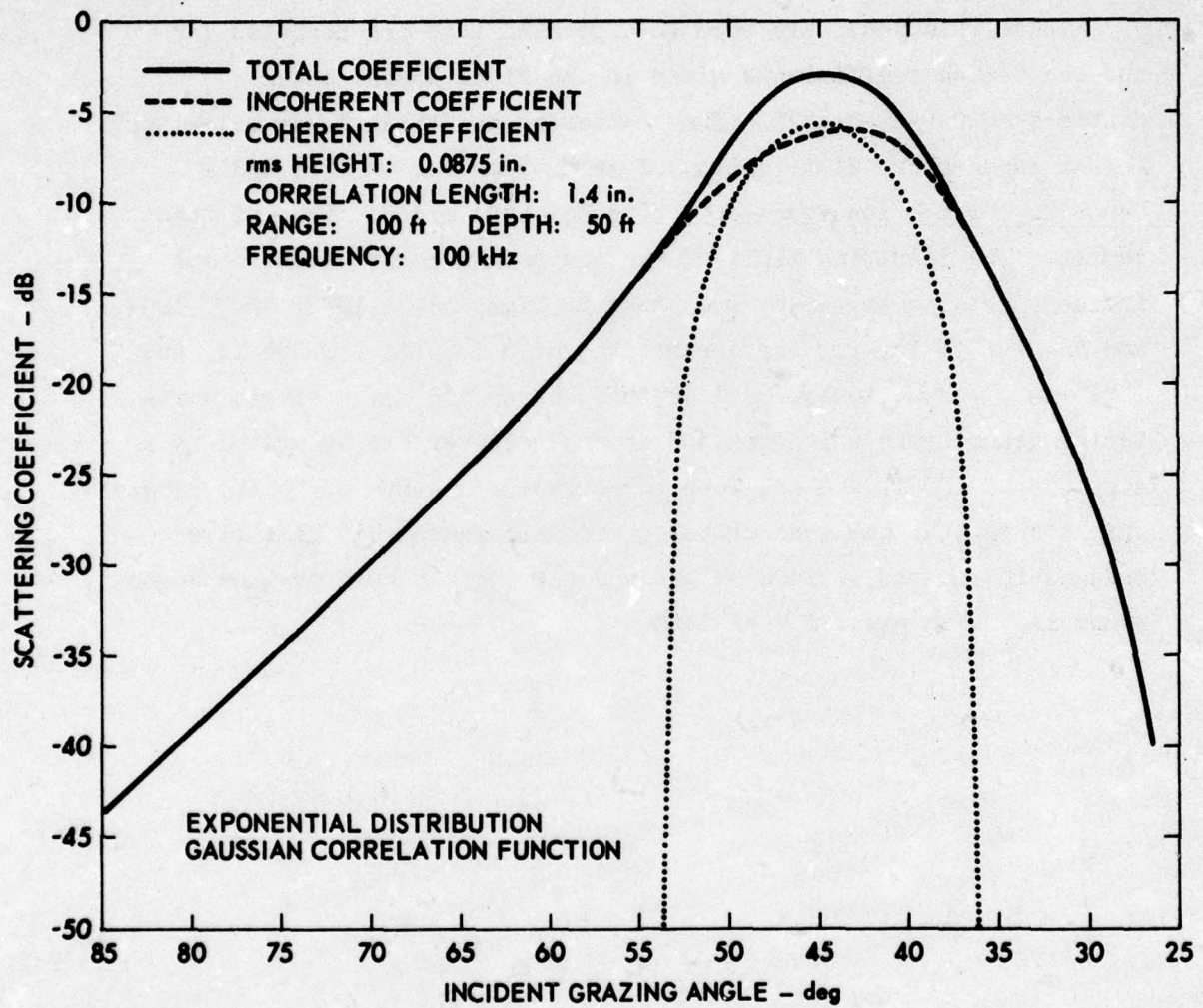
$$\alpha = \beta - \gamma , \quad (4)$$

and the total pathlength is given by

$$\text{pathlength} = \sqrt{h^2 + (L-l)^2} + \sqrt{h^2 + l^2} , \quad (5)$$

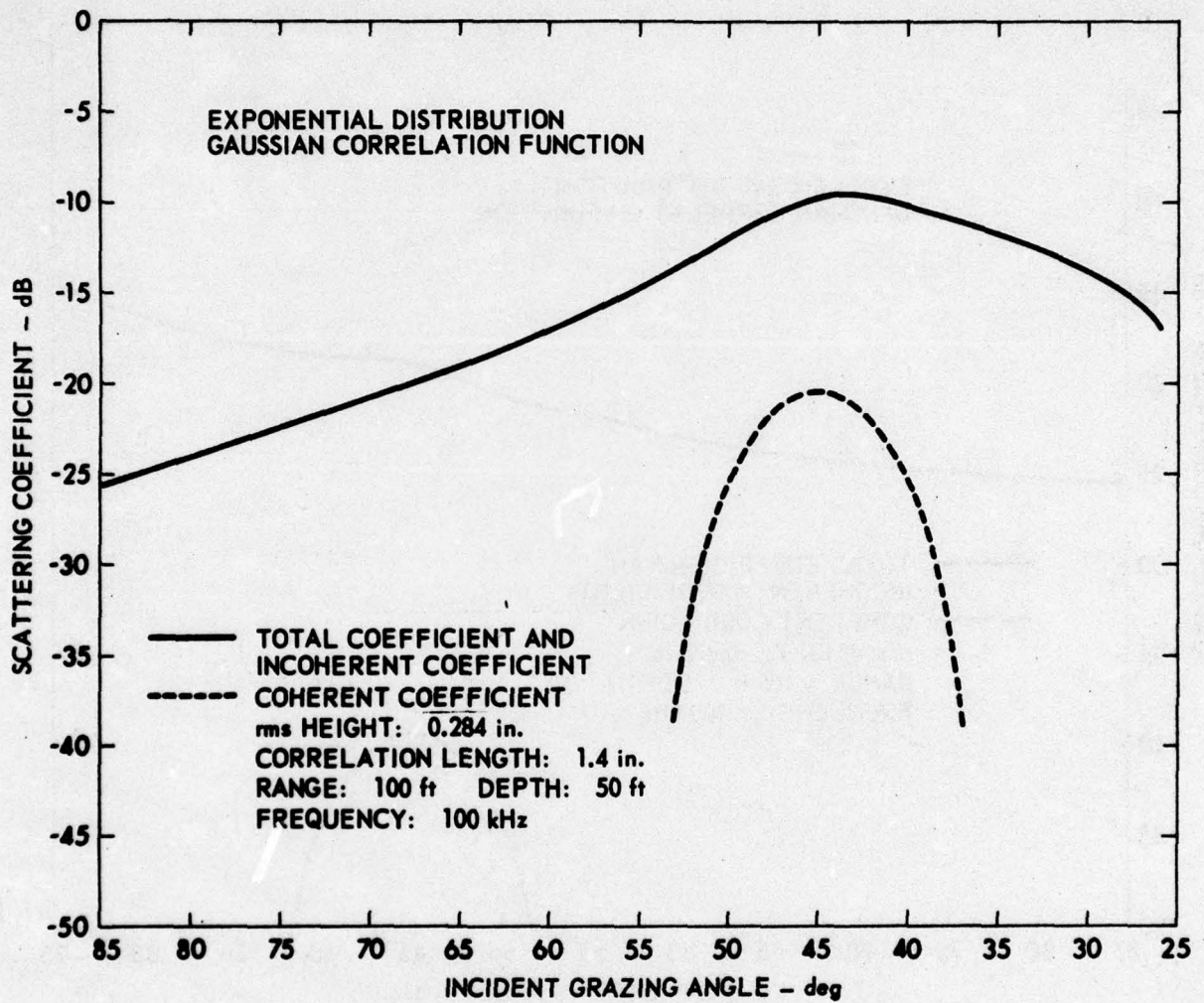
where the first term represents the distance from the receiver to the point of reflection on the surface, and the second term is the distance from that point to the source.

These relations have been incorporated into the formulas for the scattering coefficients given in the Final Report under Contract N00024-69-C-1275. The scattering coefficient was calculated for an exponential distribution of heights on the surface and a Gaussian correlation function, using Eq. (75) and Eq. (79) of that report. The resulting plots of the scattering coefficient versus incident grazing angle,  $\beta$ , are shown in Dwg. AS-71-1096, AS-71-1097, and AS-71-1098 for rms surface heights of 0.0875 in., 0.284 in. and 0.875 in., respectively. All of these plots are for a single scattering geometry in which the source and receiver are separated by a distance of 100 ft and are both submerged at a depth of 50 ft. These graphs show that the theoretical curves are reasonably sensitive to changes in the rms surface height and therefore should provide a good comparison with experimental data.

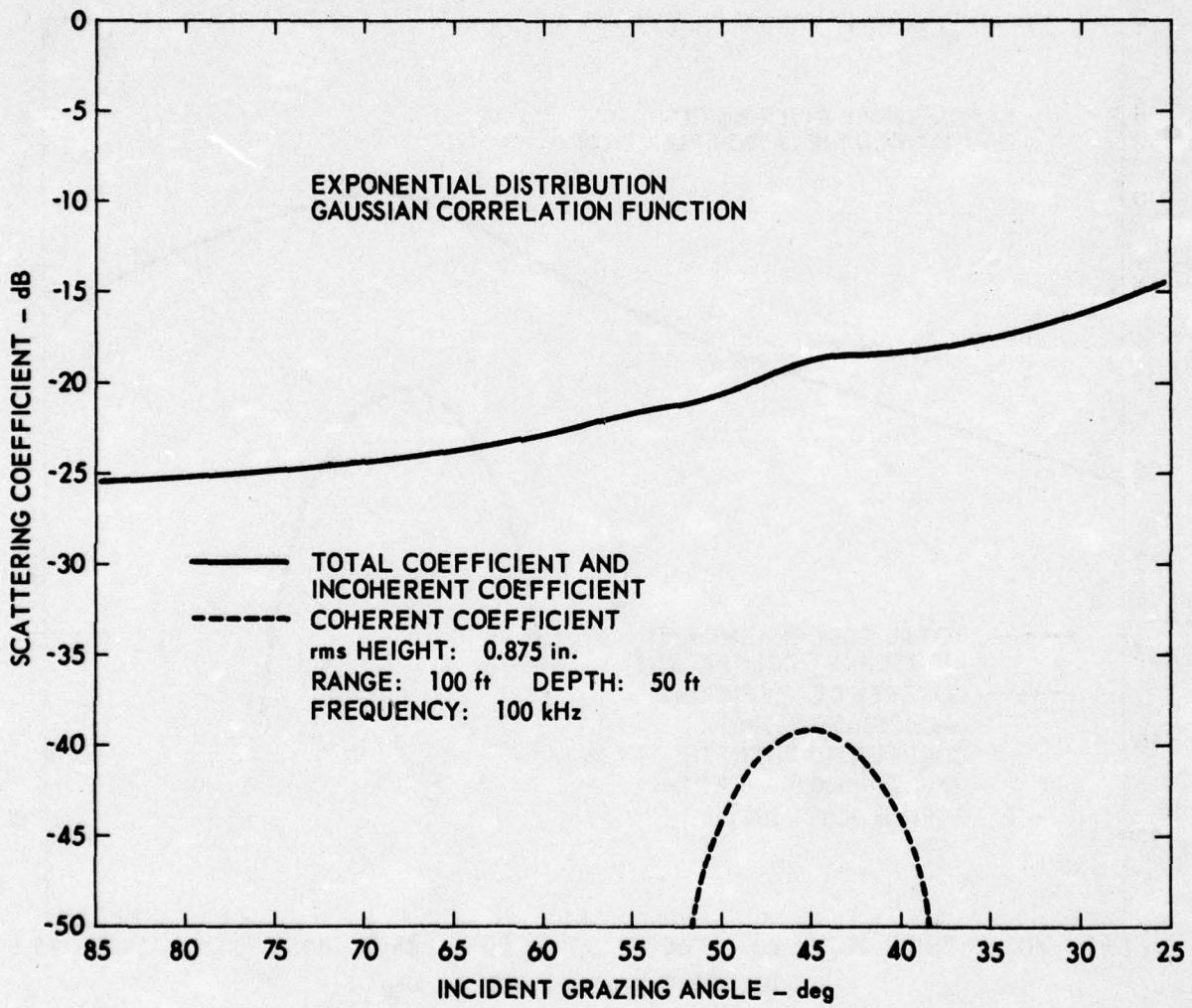


SCATTERING COEFFICIENT vs INCIDENT GRAZING ANGLE

ARL - UT  
 AS-71-1096  
 MLB - RFO  
 10 - 14 - 71



SCATTERING COEFFICIENT vs INCIDENT GRAZING ANGLE



SCATTERING COEFFICIENT vs INCIDENT GRAZING ANGLE

## II. SOUND PROPAGATION IN A SURFACE DUCT WITH A ROUGH BOUNDARY

The purpose of this section is to show how existing contour integral solutions can be used in solving the surface duct propagation problem when the surface is irregular. This method is different from that used previously by Bucker.<sup>1,2</sup>

The acoustic field is derived for a cw point source located in an inhomogeneous medium with a rough surface. Application is made to a class of surface duct profiles in which the velocity-depth variation is almost isovelocity near the surface (as shown in Dwg. AS-71-1099). The bilinear and Epstein profiles fit this class of velocity variations very well.

### A. Green's Function Solution

The wave equation for a point source with angular frequency  $\omega$  located in a layered inhomogeneous medium is given by

$$\nabla^2 P - \frac{1}{c^2(Z)} \frac{\partial^2 P}{\partial t^2} = -4\pi Q_0 \delta(\vec{r} - \vec{r}_0) e^{-i\omega t} \quad , \quad (6)$$

where  $P$  represents the pressure,  $c(Z)$  is the sound velocity (variable in the depth coordinate  $Z$ ), and  $\delta(\vec{r} - \vec{r}_0)$  is the three-dimensional Dirac delta function. The strength of the source is designated by  $Q_0$ . If cylindrical coordinates  $(r, \theta, Z)$  are assumed to have azimuthal

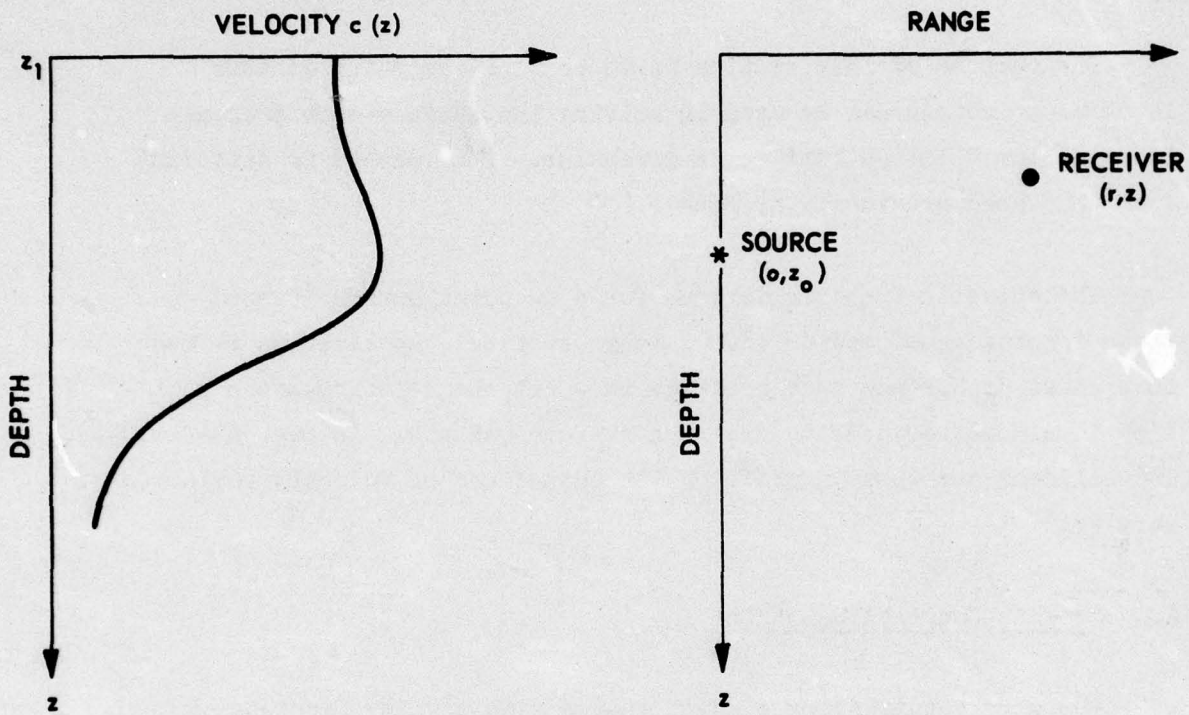


DIAGRAM OF WAVEGUIDE SHOWING LOCATION OF SOURCE AND RECEIVER

ARL - UT  
 AS-71-1099  
 RLD - RFO  
 10 - 14 - 71

symmetry and a time factor of  $\exp(-i\omega t)$  is suppressed, the following equation is obtained:

$$\frac{1}{r} \frac{\partial}{\partial r} \left( r \frac{\partial P}{\partial r} \right) + \frac{\partial^2 P}{\partial Z^2} + k^2(Z)P = \frac{-2Q_0 \delta(r) \delta(Z-Z_0)}{r} \quad , \quad (7)$$

where  $P$  now represents the time independent pressure. The wave number  $k(Z)$  is defined as  $\omega/C(Z)$  and the source is located at  $Z = Z_0$  and  $r = 0$ , as indicated in Dwg. AS-71-1099. The vertical depth coordinate  $Z$  varies from  $Z_1 \leq Z \leq \infty$ , and the range coordinate  $r$  varies from  $0 < r < \infty$ . Boundary conditions imposed on Eq. (7) are that

- (a)  $P$  must satisfy a radiation condition for  $r \rightarrow \infty$ ,
- (b) effective upgoing and downgoing reflection coefficients are specified at the surface  $Z = Z_1$ ,
- (c)  $P$  and  $\frac{\partial P}{\partial Z}$  be continuous across any discontinuities in the velocity-depth profile.

The statistical nature of the surface is introduced through one of the effective reflection coefficients.

In the Green's function approach, Eq. (7) is separated into the following forms:

$$\left[ \frac{d}{dr} \left( r \frac{d}{dr} \right) + \lambda_1 r \right] G_1(r, \lambda_1) = -2\delta(r) \quad , \quad (8)$$

$$\left[ \frac{d^2}{dZ^2} + k^2(Z) - \lambda_1 \right] G_2(Z, Z_0, -\lambda_1) = -Q_0 \delta(Z-Z_0) \quad , \quad (9)$$

where  $\lambda_1$  is the separation constant. By the resolvent Green's function technique, the solution of Eq. (7) is given by a complex convolution of  $G_1$  and  $G_2$ ,

$$P(r, Z, Z_0) = \frac{1}{2\pi i} \int_C G_1(r, \lambda_1) G_2(Z, Z_0, -\lambda_1) d\lambda_1, \quad (10)$$

where the contour  $C$  separates the singularities of the Green's functions.

The solution of Eq. (8) which satisfies the required boundary conditions is given by

$$G_1(r, \lambda_1) = i\pi H_0^1(\xi r) \quad \left( \xi = \lambda_1^{1/2}, 0 < \arg \lambda_1 < 2\pi \right), \quad (11)$$

where  $H_0^1(k_0 r s)$  is the Hankel function of the first kind, and where

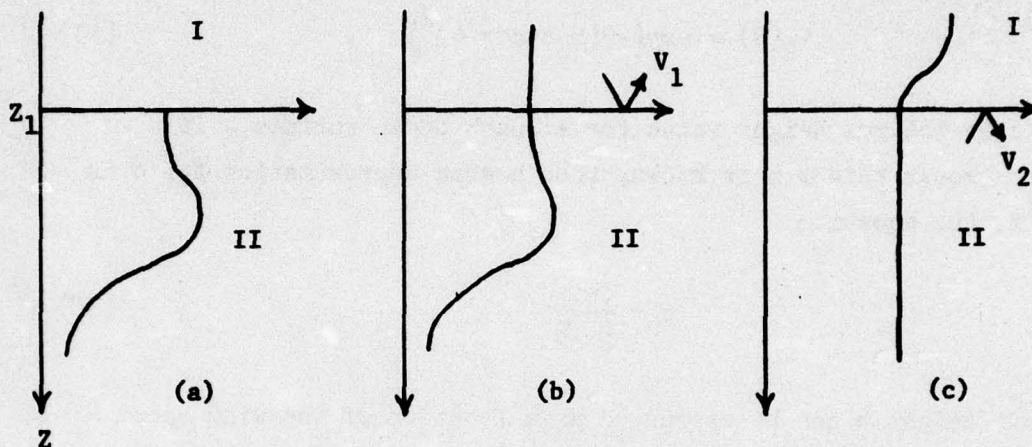
$$\xi \equiv k_0 \sin \theta \equiv k_0 s, \quad (12)$$

$\theta$  is the angle of incidence, and  $k_0$  is the wave number at the surface  $Z = Z_1$ . The solution of Eq. (9) that satisfies the required boundary conditions is given by

$$G(Z, Z_0, s) = \frac{-i}{2k_0(1-s^2)^{1/2}} \frac{f_2(Z_0)f_1(Z)}{1 - v_1 v_2} \quad Z_1 < Z < Z_0 \quad (13)$$

$$G(Z, Z_0, s) = \frac{-i}{2k_0(1-s^2)^{1/2}} \frac{f_2(Z)f_1(Z)}{1 - v_1 v_2} \quad Z_0 < Z < \infty$$

In order to define the functions in Eq. (13), Dwg. AS-71-1099 is separated as shown in the following sketch.



The idea is to divide an inhomogeneous layer into two profiles where each has a homogeneous half-space. In the present application, region I of sketch (c) is also homogeneous.  $V_1(\theta)$  is defined as the reflection coefficient of a plane wave incident from the homogeneous medium onto the lower inhomogeneous half-space [sketch (b)]. The function  $f_1(Z)$  is the field in the inhomogeneous half-space II - b, when the incident wave has unit amplitude.  $V_2(\theta)$  and  $f_2(Z)$  have an analogous meaning in sketch (c). At the source  $f_1(Z_0) = 1+V_1$  and  $f_2(Z_0) = 1+V_2$ .

When Eq. (11) and Eq. (13) are used in Eq. (10), the solution for Eq. (7) is obtained,

$$P(r, Z, Z_0) = \frac{-ik_0 Q_0}{2} \int_C \frac{f_2(Z_0) f_1(Z)}{1 - V_1 V_2} H_0^1(k_0 r s) \frac{s ds}{c} \quad Z_1 < Z < Z_0, \quad (14)$$

$$P(r, Z, Z_0) = \frac{-ik_0 Q_0}{2} \int_C \frac{f_2(Z) f_1(Z_0)}{1 - V_1 V_2} H_0^1(k_0 r s) \frac{s ds}{c} \quad Z_0 < Z < \infty,$$

where  $s \equiv \sin \theta$  and  $c \equiv \cos \theta$ .

For the case where  $Z_1$  is a lossy boundary, then, from classical scattering theory the form for  $V_2$  can be given as

$$V_2(\theta) = \exp(-2(k_0 \sigma \cos \theta)^2) \quad , \quad (15)$$

where  $\sigma$  is the rms height value for a rough ocean surface. If a peak to trough height  $h$  is known, then a good approximation for  $\sigma$  is given by the equation

$$\sigma = \frac{h}{2\sqrt{2}} \quad . \quad (16)$$

The wave height  $h$  can be expressed as a function of the wind speed  $W$  (in knots) by the following relation (derived by Schulkin):

$$h = 0.00276 W^{5/2} \quad , \quad (17)$$

where  $h$  is given in feet.

Equation (14) will now be applied to the case of a rough surface bounding an Epstein profile. This profile is used instead of the bilinear because it does not have any velocity-depth discontinuities.

#### B. Epstein Profile with a Rough Surface

The Epstein profile is a four-parameter velocity function which has had many applications. Since Eckart as well as Rosen and Morse examined this function about the same time that Epstein did, it is sometimes known by other names. Specifically, the velocity-depth profile known as the Epstein function is given by

$$\frac{1}{c^2(z)} = A \operatorname{sech}^2 \frac{z}{H} + B \tanh \frac{z}{H} + D \quad , \quad (18)$$

where the quantities A, B, D, and H are profile parameters. Bucker and Morris<sup>3</sup> have given a normal mode treatment for an Epstein surface duct with a pressure release boundary. The profile shown in Dwg. AS-71-1100 has been taken, with permission, from the paper by Bucker and Morris.

Epstein chose this function because it allows Eq. (9) to be solved in terms of hypergeometric functions. Specifically, the traveling-waves solutions to the homogeneous Eq. (9) are given by<sup>4</sup>

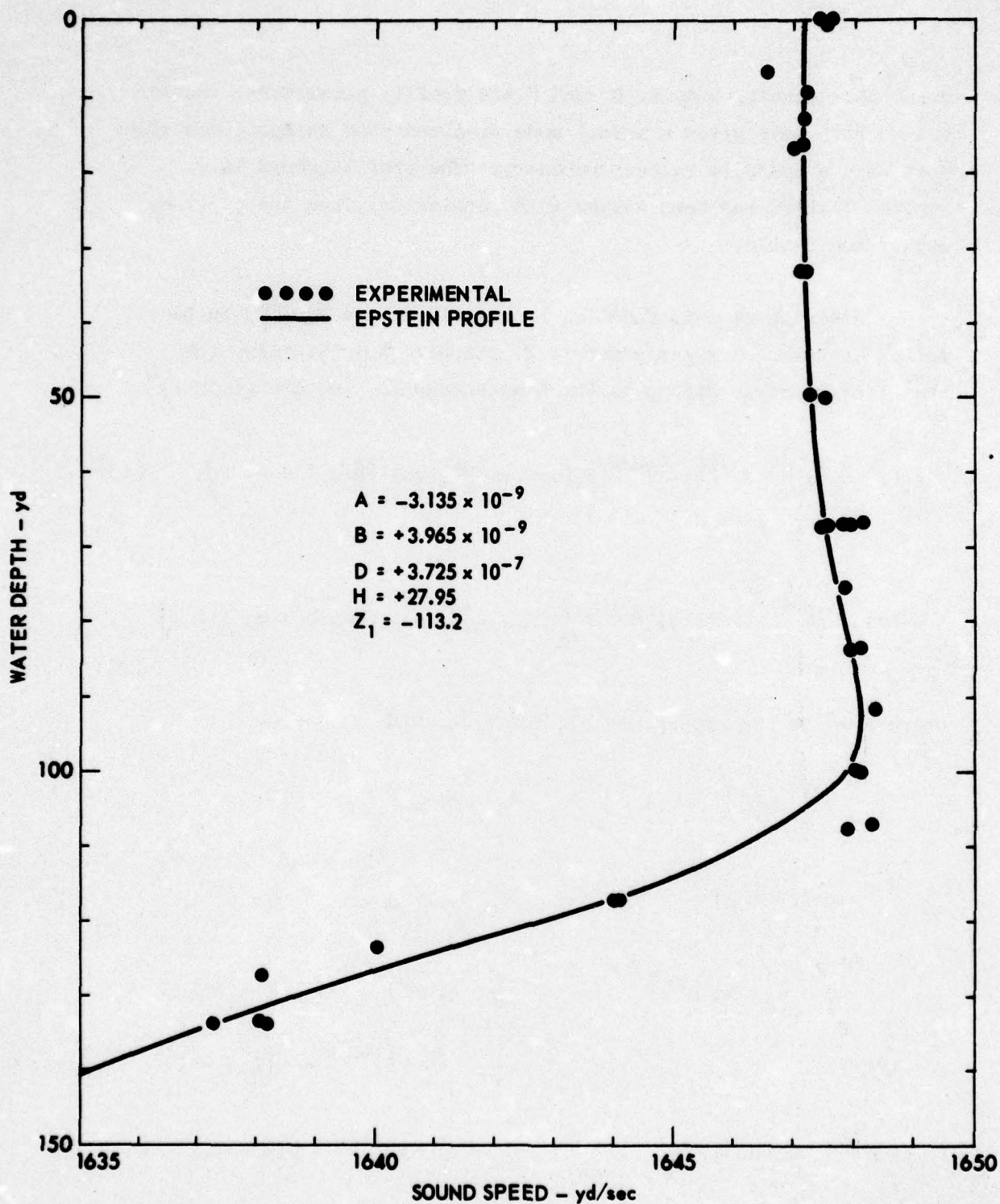
$$n_1(z) = \left(\frac{H}{2}\right)^{1/2} x^{\lambda/2} (1-x)^{\mu/2} F_1\left(1-\nu + \frac{\lambda+\mu}{2}, \nu + \frac{\lambda+\mu}{2}; 1 + \lambda; x\right) \quad (19)$$

and

$$n_2(z) = \left(\frac{H}{2}\right)^{1/2} x^{\lambda/2} (1-x)^{\mu/2} F_2\left(1-\nu + \frac{\lambda+\mu}{2}, \nu + \frac{\lambda+\mu}{2}; 1 + \mu; 1 - x\right) , \quad (20)$$

where  $F(x)$  is the hypergeometric function, and

$$\begin{aligned} \mu &= H\left(\xi^2 - k_{\infty}^2\right)^{1/2} , & k_{\infty} &= \omega/c_{\infty} , \\ \lambda &= H\left(\xi^2 - k_{-\infty}^2\right)^{1/2} , & k_{-\infty} &= \omega/c_{-\infty} , \\ \nu &= \frac{1}{2} + \left(\frac{1}{4} A\omega^2 H^2\right)^{1/2} , & c_{\infty} &= (D+B)^{-1/2} = c(Z = +\infty) , \\ \xi &= z/H , & c_{-\infty} &= (D-B)^{-1/2} = c(Z = -\infty) , \\ x &= (1 + \tanh \xi)/2 , & c_0 &= (D+A)^{-1/2} = c(Z = 0) . \end{aligned} \quad (21)$$



EPSTEIN SURFACE DUCT VELOCITY  
DEPTH PROFILE

ARL - UT  
 AS-71-1100  
 RLD - RFO  
 10 - 14 - 71

The following limiting forms are

$$\lim_{z \rightarrow -\infty} n_1(z) \sim (H/2)^{1/2} \exp(\lambda \xi) \quad (22)$$

$$\lim_{z \rightarrow +\infty} n_2(z) \sim (H/2)^{1/2} \exp(-\mu \xi)$$

Also when  $k_{\infty}^2 > \xi^2$  and  $k_{-\infty}^2 > \xi^2$ , then

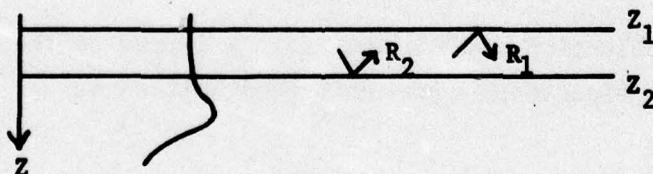
$$\left(\xi^2 - k_{-\infty}^2\right)^{1/2} = -i\left(k_{-\infty}^2 - \xi^2\right)^{1/2}$$

and

$$\left(\xi^2 - k_{\infty}^2\right)^{1/2} = -i\left(k_{\infty}^2 - \xi^2\right)^{1/2}$$

In order to find the pressure field in an Epstein surface duct, the appropriate Green's function must be specified. Equation (13) will now be given in a more general form.

The following diagram is necessary for the definition of the Green's function.



When  $z_1 \neq z_2$ , the Green's function is given by

$$G(z, z_0) = \frac{\left[ n_1(z_<) + R_1(z_1) \frac{n_1(z_1)n_2(z_<)}{n_2(z_1)} \right] \left[ n_2(z_>) + R_2(z_2) \frac{n_1(z_>)n_2(z_2)}{n_1(z_2)} \right]}{W(n_2, n_1) \left[ 1 - R_1(z_1)R_2(z_2) \frac{n_1(z_1)n_2(z_2)}{n_1(z_2)n_2(z_1)} \right]}$$

(24)

where  $Z_<$  and  $Z_>$  denote the smaller or larger, respectively, of the variables  $Z$  and  $Z_0$ .  $W(n_2, n_1)$  represents the Wronskian of  $n_2$  and  $n_1$ .  $n_1(Z)$  must be an outgoing wave for  $Z \rightarrow -\infty$ , and  $n_2(Z)$  must be an outgoing wave for  $Z \rightarrow +\infty$ . The reflection coefficients are defined as

$$R_1(Z_1) = \frac{n_1^+(Z_1)}{n_1^-(Z_1)} ; \quad R_2(Z_2) = \frac{n_2^-(Z_2)}{n_2^+(Z_2)} , \quad (25)$$

where, by analytic continuation, the functions  $n_1$  and  $n_2$  are written as

$$\begin{aligned} n_1 &= n_1^+ + n_1^- \\ n_2 &= n_2^+ + n_2^- . \end{aligned} \quad (26)$$

(That is,  $n_1$  and  $n_2$  are decomposed into upgoing and downgoing waves.)

If the region between  $Z_1$  and  $Z_2$  is taken as homogeneous and thin, then Eq. (24) can be simplified. In the case of the Epstein profile,  $Z_1$  and  $Z_2$  are taken in the region where the velocity variation is negligible.

When the reflection coefficient  $R_2$  is referred to the level  $Z = Z_1$ , then the eigenvalue equation can be written as

$$R_1(Z_1)R_2(Z_1) = 1 . \quad (27)$$

$R_1$  and  $R_2$  are generally specified in terms of impedance conditions at the boundaries. However, in the present treatment  $R_1$  and  $R_2$  will not be functions of the boundary impedances.

Equation (24) will now be specialized to the Epstein profile with a rough surface. The function  $n_1$  and  $n_2$  for the Epstein profile are those already given by Eqs. (19) and (20). For the reflection coefficient  $R_1$ , Eq. (15) will be used, thus

$$R_1(Z_1) = \exp\left(-2(k_0 \sigma \cos \theta)^2\right) , \quad (28)$$

where

$$k_0 \equiv k_{-\infty} .$$

In order to obtain  $R_2(Z_1)$ , the analytic continuation for  $n_2(Z)$  is used to give

$$R_2(Z_1) = \frac{\Gamma(-\lambda)\Gamma\left(\nu + \frac{\mu+\lambda}{2}\right)\Gamma\left(1 - \nu + \frac{\lambda+\mu}{2}\right)}{\Gamma(\lambda)\Gamma\left(\nu + \frac{\mu-\lambda}{2}\right)\Gamma\left(1 - \nu + \frac{\mu-\lambda}{2}\right)} \exp(2\lambda\zeta_1) , \quad (29)$$

which is valid for  $2|\zeta| \gg 1$ . The Wronskian of  $n_2$  and  $n_1$  has already been given in reference 4.

When the period equation  $1 - R_1 R_2 = 0$  is solved for the complex eigenvalues  $\xi$ , then the residues yield the normal modes. Since the eigenvalues are complex, the modes are leaky (individually they do not satisfy the radiation condition). The following method is being used to calculate the complex eigenvalues.

First the period equation is written as

$$R_1 \bar{R}_2 \exp(-2ik_0 Z_1 \cos \theta_m) = e^{-2i\pi m} ; \quad (m = 0, 1, 2, \dots) , \quad (30)$$

where

$$R_2 = \bar{R}_2 \exp(2\lambda z_1) \quad ,$$

$$\lambda = -ik_o H \cos \theta \quad .$$

If the magnitudes of  $R_1$  and  $\bar{R}_2$  are each 1, then the angle  $\theta$  is real and a simple solution is obtained with unattenuated upgoing and downgoing plane homogeneous waves. However, in Eq. (30) the magnitudes of  $R_1$  and  $\bar{R}_2$  are not each 1; therefore, Eq. (30) must be divided as follows:<sup>5</sup>

$$|R_1| |\bar{R}_2| = \exp(-2k_o z_1 \operatorname{Im} \cos \theta_m) \quad ,$$

$$\operatorname{Im} \cos \theta_m = \frac{-\ln |R_1| |\bar{R}_2|}{2k_o z_1} \quad ,$$

(31)

$$\phi_1 + \phi_2 - 2k_o z_1 \operatorname{Re} \cos \theta_m = +2\pi n \quad ,$$

$$\operatorname{Re} \cos \theta_m = \frac{\phi_1 + \phi_2 - 2\pi n}{2k_o z_1} \quad ,$$

where

$$R_1 = |R_1| \exp(i\phi_1) \quad ,$$

$$\bar{R}_2 = |\bar{R}_2| \exp(i\phi_2) \quad .$$

The complex eigenvalues  $\xi_m = k_o \sin \theta_m$  are presently being computed by means of a complex gamma function routine which computes values for  $\operatorname{Re} \ln \Gamma(Z)$  and  $\operatorname{Im} \ln \Gamma(Z)$ . This is fortunate, since

$$\operatorname{Re} \ln \Gamma(Z) = \ln |\Gamma(Z)|$$

and

(32)

$$\operatorname{Im} \ln \Gamma(Z) = \arg \Gamma(Z) \quad .$$

(Z in the gamma functions represents a complex number). These complex roots will then be used in calculating the residues. It is expected that this method will provide a way to incorporate the effects of a rough boundary on surface duct propagation.

## APPENDIX

### LIST OF REPORTS OBTAINED FOR SCATTERING DATA

1. Abramowitz, W., Crews, A., Erath, R., "Ocean Surface Reverberation: Surface Interface Scattering," Gruman Aircraft Engineering Corporation Report RE-252, Bethpage, New York (May 1966).
2. Adlington, R. H., "Acoustic-Reflection Losses at the Sea Surface Measured with Explosive Sources," J. Acoust. Soc. Amer. 35(11), 1834-1835 (1963).
3. Ament, W. S., "Forward and Back-Scattering from Certain Rough Surfaces," Electromagnetic Wave Theory Symposium, IRE Trans. on Antennas and Propagation, 369-373 (July 1956).
4. Ament, W. S., "Reciprocity and Scattering by Certain Rough Surfaces," IRE Trans. Antennas and Propagation, 167-174 (March 1960).
5. Andreeva, I. B., Kharat'yan, E. G., "Sound Scattering by the Surface of the Ocean and by Surface Scattering Layers," Sov. Phys.-Acoust. 12(4), 350-354 (April 1967).
6. Ball, E. C., Carlson, J. A., "Acoustic Backscatter from a Random Rough Water Interface," Thesis presented to the Naval Postgraduate School, Monterey, California (June 1967).
7. Barakos, P. A., "Acoustic Wave Scattering from a Corrugated Inelastic Boundary," Naval Underwater Sound Laboratory Report No. 968, Naval Underwater Sound Laboratory, New London, Connecticut (November 1968).
8. Barrick, D. E., "Radar Signal Spectrum Distortions Produced by Volume and Surface Distributed Scatterers," Battelle Memorial Institute, Report prepared for USNC/USRI Meeting, Columbus, Ohio (1968).
9. Beard, C. I., Brooks, F. E., "Comparison of Predictions of Vector Model of Microwave Reflection from the Ocean with Experimental Results," Electrical Engineering Research Laboratory Report No. CF-2526, Electrical Engineering Research Laboratory, The University of Texas at Austin (June 1956).

10. Boles, W. D., Fung, A. K., Moore, R. K., "Bistatic Measurements of Acoustic Waves Scattered from a Statistically Rough Known Surface," J. Acoust. Soc. Amer. 45(4), 1040-1044 (1969).
11. Brown, J. R., Scrimger, J. A., Turner, R. C., "Reverberation from the Ocean Surface," Pacific Naval Laboratory Technical Memorandum No. 66-8, Pacific Naval Laboratory, Esquimalt, British Columbia (May 1966).
12. Brown, M. V., "Intensity Fluctuations in Reflections from the Ocean Surface," J. Acoust. Soc. Amer. 46(1), 196-204 (January 1969).
13. Brown, M. V., Ricard, James, "Fluctuations in Surface-Reflected Pulsed cw Arrivals," J. Acoust. Soc. Amer. 32(12), 1551-1554 (December 1960).
14. Buxcey, E. et al., "Acoustic Detection of Microbubbles and Particulate Matter Near the Sea Surface," Thesis presented to the Naval Postgraduate School, Monterey, California (June 1965).
15. Clay, C. S., "Fluctuations of Sound Reflected from the Sea Surface," J. Acoust. Soc. Amer. 32(12), 1547-1551 (December 1960).
16. Clay, C. S., Medwin, H., "High-Frequency Acoustical Reverberation from a Rough-Sea Surface," J. Acoust. Soc. Amer. 36(11), 2131-2134 (November 1964).
17. Chapman, R. P., Harris, J. H., "Surface Backscattering Strengths Measured with Explosive Sound Sources," J. Acoust. Soc. Amer. 34(10), 1592-1597 (October 1962).
18. Chapman, R. P., Harris, J. H., "Surface Backscattering Strengths Measured with Explosive Sound Sources," Naval Research Establishment Report No. 62/3, Naval Research Establishment, Dartmouth, Nova Scotia (April 1962).
19. Chapman, R. P., Scott, H. D., "Surface Backscattering Strengths Measured Over an Extended Range of Frequencies and Grazing Angles," J. Acoust. Soc. Amer. 36(9), 1735-1737 (1964).
20. Chapman, R. P., Scott, H. D., "Surface Backscattering Strengths Measured Over an Extended Range of Frequencies and Grazing Angles," Naval Research Establishment Report No. 63/10, Naval Research Establishment, Dartmouth, Nova Scotia (July 1963).
21. Crowther, P. A., "Basic Theory of Acoustic Scattering from the Sea Surface in Terms of Ascertained Surface Statistics," Elliott Bros. (London) Ltd., Naval Division, Ref.No. ND(F) 121, Chobham Road, Frimley, Camberley, Surrey, England (February 1968).

23. Fortuin, L., "A Survey of Literature on Reflection and Scattering of Sound Waves at the Sea Surface," SACLANT Technical Report 138, SACLANT ASW Research Center, La Spezia, Italy (February 1969).
24. Gardner, R. R., "The Effect of Shadowing on Acoustic Scattering from the Sea Surface," Physics Department, University of California at San Diego, presently Naval Undersea Research and Development Center, San Diego, California.
25. Garrison, G. R., Murphy, S. R., Potter, D. S., "Measurements of Backscattering of Underwater Sound from the Sea Surface," J. Acoust. Soc. Amer. 32(1), 104-111 (January 1960).
26. Glotov, V. P., Lysanov, Yu. P., "Coherent Reflection of Sound from an Ocean Surface Layer Containing Resonance Scatterers," Sov. Phys.-Acoust. 10(4), 360-363 (April 1965).
27. Glotov, V. P., Lysanov, Yu. P., "Influence of a Nonuniform Distribution of Air Bubbles on the Reflection of Sound from the Surface Layer of the Ocean," Sov. Phys.-Acoust. 11(4), 421-423 (April 1966).
28. Gulin, E. P., Malyshev, K. I., "Experiments in the Spatial Correlation of the Amplitude and Phase Fluctuations of Acoustic Signals Reflected from a Rough Ocean Surface," Sov. Phys.-Acoust. 10(4), 365-368 (April 1965).
29. Gulin, E. P., Malyshev, K. I., "Statistical Characteristics of Sound Signals Reflected from the Undulating Sea Surface," Sov. Phys.-Acoust. 8(3), 228-234 (1963).
30. Hayes, G. B., "Environmental Acoustic Measurements at Halifax, Nova Scotia," Underwater Sound Laboratory Technical Report No. 670, Naval Underwater Sound Laboratory, New London, Connecticut (July 1965).
31. Hayre, H. S., Vrovlis, G., "Laboratory Simulation of Ocean Surface Reverberation," University of Houston, Department of Electrical Engineering Wave Propagation Laboratories Technical Report No. 69-10, Wave Propagation Laboratories, The University of Houston (July 1969).
32. Hoover, R. M., Urick, R. J., "Backscattering of Sound from the Sea Surface: Its Measurement, Causes, and Application to the Prediction of Reverberation Levels," J. Acoust. Soc. Amer. 28(6), 1038-1042 (November 1956).
33. Jelonek, L. J., "Acoustic Scattering from Ocean Bottoms," Elliot Bros. (London) Ltd., Naval Division, Reference No. ND(F) 114, Chobham Road, Frimley, Camberley, Surrey, England (May 1968).

34. Kur'yanov, B. F., "Calculating the Effect of the Free Surface on Sound Scattering in the Sea," Sov. Phys.-Acoust. 10(2), 203-204 (October 1964).
35. Marsh, H. W., "Sound Reflection and Scattering from the Sea Surface," J. Acoust. Soc. Amer. 35(2), 240-244 (February 1963).
36. Marsh, H. W., Bell, T. G., Horton, C. W., "Reflection and Scattering of Sound by the Sea Bottom," Report prepared for 68th Meeting of the Acoustical Society of America.
37. Marsh, H. W., Kuo, E. Y. T., "Further Results on Sound Scattering by the Sea Surface," AVCO Marine Electronics Office, New London, Connecticut (October 1965).
38. Martin, J. J., "Sea-Surface Roughness and Acoustic Reverberation--An Operational Model," J. Acoust. Soc. Amer. 40(3), 697-710 (1966).
39. Martinek, J., Mecklenberg, H. J., Broome, P. W., "Bibliography of Articles on Underwater Sound Transmission, Detection, and Identification 1956-1966," Earth Sciences, Teledyne Co. Report, Alexandria, Virginia.
40. Medwin, H., "Specular Scattering of Underwater Sound from a Wind-Driven Surface," J. Acoust. Soc. Amer. 41(6), 1485-1495 (1967).
41. Mellen, R. H., Marsh, J. W., "Underwater Sound in the Arctic Ocean," AVCO Marine Electronics Office Report No. MED-65-1002, New London, Connecticut, Submitted to USL, New London, Connecticut (August 1965).
42. Moore, R. K., Parkins, B. E., "Omnidirectional Scattering of Acoustic Waves from Rough Surfaces of Known Statistics," J. Acoust. Soc. Amer. 40(1), 170-175 (February 1966).
43. Parker, J. G., "Reflection of Plane Sound Waves from an Irregular Surface," J. Acoust. Soc. Amer. 28(4), 672-680 (July 1956).
44. Patterson, R. B., "Backscatter of Sound from a Rough Boundary," J. Acoust. Soc. Amer. 35(12), 2010-2013 (December 1963).
45. Proud, J. M., Beyer, R. T., Tamarkin, P., "Reflection of Sound from Randomly Rough Surfaces," J. Appl. Phys. 31(3), 543-552 (March 1960).
46. Pryce, A. W., "An Examination of Some Surface-Channel Acoustic Propagation Data," (U) Admiralty Underwater Weapons Establishment Report No. 36/61, Portland, England (August 1961). CONFIDENTIAL

47. Richter, R. M., "Measurements of Backscattering from the Sea Surface," J. Acoust. Soc. Amer. 36(5), 864-869 (May 1964).
48. Roderick, W. I., "Frequency Spectra of Forward Scattered Underwater Sound from a Traveling Sinusoidal Surface," Naval Underwater Sound Laboratory Report No. 988, Naval Underwater Sound Laboratory, New London, Connecticut (May 1969).
49. Roderick, W. I., Cron, B. F., "Frequency Spectra of Forward-Scattered Sound from the Ocean Surface," Naval Underwater Sound Laboratory Report No. 1010, Naval Underwater Sound Laboratory, New London, Connecticut (July 1969).
50. Schulkin, M., "Sea Surface Roughness and Shadow Zone Penetration," USN(JUA) 19(1), 55-66 (1969).
51. Schulkin, M., Shaffer, R., "Backscattering of Sound from the Sea Surface," J. Acoust. Soc. Amer. 36(9), 1699-1703 (September 1964).
52. Scheible, J. W., Fowler, R. C., "Specular Scatter of Underwater Sound from a Wind-Driven Model Sea Surface," Thesis presented to the Naval Postgraduate School, Monterey, California (June 1968).
53. Shelley, R., "Sea Surface Forward Scattering at Low Grazing Angles," U. S. Navy Electronics Laboratory Report No. 1338, U. S. Navy Electronics Laboratory, San Diego, California (November 1965).
54. Smirnov, G. E., Tonadanov, O. S., "Fluctuations in Hydroacoustic Pulse Signals on Reflection from a Water Surface on Which Waves Are Present," Sov. Phys.-Acoust. 6(4), 480-487 (April 1961).
55. "Sound Reflection and Scattering by the Ocean Boundaries," AVCO Marine Electronics Office Report Prepared for Underwater Sound Laboratory, New London, Connecticut (December 1963).
56. Tuteur, F. B., et al., "Propagation and Communications Through Underwater Acoustic Channels," Department of English and Applied Science, Yale University, New Haven, Connecticut (January 1970).
57. Urick, R. J., "The Processes of Sound Scattering at the Ocean Surface and Bottom," J. Marine Res. 15, 134-148 (1956).
58. Whitmarsh, D. C., Skudzyk, E., Urick, R. J., "Forward Scattering of Sound in the Sea and Its Correlation with the Temperature Microstructure," J. Acoust. Soc. Amer. 29(10), 1124-1143 (October 1967).

#### REFERENCES

1. H. P. Bucker, "Sound Propagation in a Channel with Lossy Boundaries," J. Acoust. Soc. Amer. 48, 1187-1194 (November 1970).
2. H. P. Bucker, "Normal Mode Solution for Sound Propagation in a Surface Duct with a Rough Surface," (U), USN(JUA) 19, 13-28 (January 1969). (CONFIDENTIAL)
3. H. P. Bucker and H. E. Morris, "Epstein Normal-Mode Model of a Surface Duct," J. Acoust. Soc. Amer. 41, 1475-1478 (June 1967).
4. R. L. Deavenport, "A Normal Mode Theory of an Underwater Acoustic Duct by Means of Green's Functions," Radio Sci. 1, 709-724 (1966).
5. A. D. Watt, VL F Radio Engineering (Pergamon Press, Oxford, 1967), pp. 244-255.

8 November 1971

DISTRIBUTION LIST FOR  
QUARTERLY PROGRESS REPORT NO. 2  
UNDER CONTRACT N00024-71-C-1266  
FOR THE PERIOD 1 JULY - 30 SEPTEMBER 1971  
UNCLASSIFIED--FOR OFFICIAL USE ONLY

Copy No.

	Commander
	Naval Ship Systems Command
	Department of the Navy
	Washington, D. C. 20360
1	Attn: SHIPS 901L
2	PMS-387
3 - 4	Technical Library (Code 2052)
5	Commander
	Naval Undersea Research and Development Center
	San Diego Division
	San Diego, California 92132
	Attn: Code 503
	Director
	Naval Research Laboratory
	Department of the Navy
	Washington, D. C. 20390
6	Attn: Code 8120
7	Code 8172
8 - 9	Officer-in-Charge
	New London Laboratory
	Naval Underwater Systems Center
	New London, Connecticut 06320
	Attn: Code TAll
	Commanding Officer and Director
	Naval Ship Research and Development Laboratory
	Panama City, Florida 32402
10	Attn: Code 700
11	Code 720

Distribution list for QPR No. 2 under Contr N00024-71-C-1266 (Cont'd)

Copy No.

12	Superintendent U. S. Naval Postgraduate School Monterey, California 93940 Attn: Prof. H. Medwin
13	Office of Naval Research Resident Representative Room No. 582 Federal Building Austin, Texas 78701
14	Garland R. Barnard, ARL/UT
15	Michael L. Boyd, ARL/UT
16	Roy L. Deavenport, ARL/UT
17	Harlan G. Frey, ARL/UT
18	J. Wesley Wauson, ARL/UT
19	Patrick J. Welton, ARL/UT
20	Library, ARL/UT
21 - 22	ARL Reserve

UNCLASSIFIED

Security Classification

DOCUMENT CONTROL DATA - R & D

(Security classification of title, body of abstract and indexing annotation must be entered when the overall report is classified)

1. ORIGINATING ACTIVITY (Corporate author) Applied Research Laboratories ✓ The University of Texas at Austin Austin, Texas 78712		2a. REPORT SECURITY CLASSIFICATION [REDACTED]	
3. REPORT TITLE QUARTERLY PROGRESS REPORT NO. 2 UNDER CONTRACT N00024-71-C-1266		2b. GROUP ---	
4. DESCRIPTIVE NOTES (Type of report and inclusive dates) quarterly progress report (1 July - 30 September 1971)			
5. AUTHOR(S) (First name, middle initial, last name) ---			
6. REPORT DATE 8 November 1971	7a. TOTAL NO. OF PAGES 32	7b. NO. OF REFS 5	
8a. CONTRACT OR GRANT NO. ✓ N00024-71-C-1266	8b. ORIGINATOR'S REPORT NUMBER(S) ---		
b. PROJECT NO. SF 11552002, Task 8118	8c. OTHER REPORT NO(S) (Any other numbers that may be assigned this report) ---		
10. DISTRIBUTION STATEMENT [REDACTED]		DISTRIBUTION STATEMENT A Approved for public release; Distribution Unlimited	
11. SUPPLEMENTARY NOTES ---		12. SPONSORING MILITARY ACTIVITY Naval Ship Systems Command Department of the Navy Washington, D. C. 20360	
13. ABSTRACT In Section I a status report is given on the possible verification of ARL's forward scattering theory with data from the sea surface. The literature on forward and specular scattering has been thoroughly examined. No appropriate forward scatter data were found from the sea surface. Due to the lack of available sea surface data, a forward scatter experiment is presently being proposed at ARL's Lake Travis Test Station. A brief discussion and proposed experimental setup are described herein, along with some theoretical forward scatter predictions. In Section II the acoustic surface duct propagation problem for an irregular boundary is solved in terms of a contour integral. The roughness is incorporated into the boundary value problem by means of an effective reflection coefficient. Application is made to the surface duct transmission problem for a velocity-depth variation given by the Epstein profile. (U-FOUO)			

14 KEY WORDS	LINK A		LINK B		LINK C	
	ROLE	WT	ROLE	WT	ROLE	WT
Forward scatter Green's function Surface duct propagation Surface scattering bibliography						