

AD-A036 563

ARMY MISSILE RESEARCH DEVELOPMENT AND ENGINEERING LAB--ETC F/G 9/1
TRANSIENTS ON A LOSSLESS, EXPONENTIALLY-TAPERED TRANSMISSION LI--ETC(U)
DEC 76 D MATHEWS
RG-77-5

UNCLASSIFIED

NL

1 OF 1
ADA
036 563



END
DATE
FILMED
4-13-77
NTIS

U.S. DEPARTMENT OF COMMERCE
National Technical Information Service

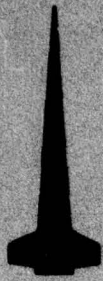
AD-A036 563

TRANSIENTS ON A LOSSLESS, EXPONENTIALLY-TAPERED
TRANSMISSION LINE

ARMY MISSILE RESEARCH, DEVELOPMENT AND ENGINEERING
LABORATORY, REDSTONE ARSENAL, ALABAMA

30 DECEMBER 1976

ADA 036563



TECHNICAL REPORT RG-77-5

**TRANSIENTS ON A LOSSLESS, EXPONENTIALLY-TAPERED
TRANSMISSION LINE**

David Mathews
Guidance and Control Directorate
US Army Missile Research, Development and Engineering Laboratory
US Army Missile Command
Redstone Arsenal, Alabama 35809

30 December 1976

Approved for public release; distribution unlimited.



U.S. ARMY MISSILE COMMAND

Redstone Arsenal, Alabama

REPRODUCED BY
NATIONAL TECHNICAL
INFORMATION SERVICE
U. S. DEPARTMENT OF COMMERCE
SPRINGFIELD, VA. 22161

DDC
RECEIVED
MAR 10 1977
RECEIVED
A

DISPOSITION INSTRUCTIONS

DESTROY THIS REPORT WHEN IT IS NO LONGER NEEDED. DO NOT RETURN IT TO THE ORIGINATOR.

DISCLAIMER

THE FINDINGS IN THIS REPORT ARE NOT TO BE CONSTRUED AS AN OFFICIAL DEPARTMENT OF THE ARMY POSITION UNLESS SO DESIGNATED BY OTHER AUTHORIZED DOCUMENTS.

TRADE NAMES

USE OF TRADE NAMES OR MANUFACTURERS IN THIS REPORT DOES NOT CONSTITUTE AN OFFICIAL INDORSEMENT OR APPROVAL OF THE USE OF SUCH COMMERCIAL HARDWARE OR SOFTWARE.

SEARCHED	
DATE	SEARCHED <input checked="" type="checkbox"/>
INDEXED	SEARCHED <input type="checkbox"/>
CLASSIFIED	SEARCHED <input type="checkbox"/>
IDENTIFICATION	
BY	
DISTRIBUTION/AVAILABILITY CODE	
Doc.	AVAIL. and/or SPECIM.
A	

UNCLASSIFIED

SECURITY CLASSIFICATION OF THIS PAGE (When Data Entered)

REPORT DOCUMENTATION PAGE		READ INSTRUCTIONS BEFORE COMPLETING FORM
1. REPORT NUMBER RG-77-5	2. GOVT ACCESSION NO.	3. RECIPIENT'S CATALOG NUMBER
4. TITLE (and Subtitle) TRANSIENTS ON A LOSSLESS, EXPONENTIALLY-TAPERED TRANSMISSION LINE		5. TYPE OF REPORT & PERIOD COVERED Technical Report
7. AUTHOR(s) David Mathews		6. PERFORMING ORG. REPORT NUMBER RG-77-5
9. PERFORMING ORGANIZATION NAME AND ADDRESS Commander US Army Missile Command ATTN: DRSMI-RG Redstone Arsenal, Alabama 35809		8. CONTRACT OR GRANT NUMBER(s)
11. CONTROLLING OFFICE NAME AND ADDRESS Commander US Army Missile Command ATTN: DRSMI-RPR Redstone Arsenal, Alabama 35809		10. PROGRAM ELEMENT, PROJECT, TASK AREA & WORK UNIT NUMBERS
14. MONITORING AGENCY NAME & ADDRESS (if different from Controlling Office)		12. REPORT DATE 30 December 1976
		13. NUMBER OF PAGES 12
		15. SECURITY CLASS. (of this report) Unclassified
		15a. DECLASSIFICATION/DOWNGRADING SCHEDULE
16. DISTRIBUTION STATEMENT (of this Report) Distribution unlimited; approved for public release.		
17. DISTRIBUTION STATEMENT (of the abstract entered in Block 20, if different from Report)		
18. SUPPLEMENTARY NOTES		
19. KEY WORDS (Continue on reverse side if necessary and identify by block number)		
20. ABSTRACT (Continue on reverse side if necessary and identify by block number) A solution for the problem of a voltage pulse propagating along a lossless, exponentially-tapered transmission line is presented in the form of a convolution integral. If the input pulse can be approximated in terms of simple functions, an analytical solution is possible. If not, numerical evaluation of the resulting integral is still much simpler than solving the differential equations of propagation.		

DD FORM 1 JAN 73 1473

EDITION OF 1 NOV 65 IS OBSOLETE

UNCLASSIFIED

SECURITY CLASSIFICATION OF THIS PAGE (When Data Entered)

TRANSIENTS ON A LOSSLESS, EXPONENTIALLY-TAPERED TRANSMISSION LINE

The following is an analytical solution for a voltage pulse travelling along an exponentially-tapered transmission line in which series and shunt resistances may be neglected. It is valid up to the point of reflection at the end of the line and is thus the solution for a "semi-infinite" transmission line with an arbitrary input pulse. It may be used as a very quick check of more general computer solutions for nonuniform transmission line problems.^{1,2}

Figure 1 shows the line schematically and defines symbols. Inductance and capacitance along the line are assumed to vary as

$$L(x) = L_0 e^{\alpha x} \quad (1)$$

$$C(x) = C_0 e^{-\alpha x} \quad (2)$$

The equations to be solved are then

$$\frac{\partial}{\partial x} V(x,t) + L(x) \frac{\partial}{\partial t} I(x,t) = 0 \quad (3)$$

$$C(x) \frac{\partial}{\partial t} V(x,t) + \frac{\partial}{\partial x} I(x,t) = 0 \quad (4)$$

Using Laplace transforms and boundary conditions $I(x,0) = V(x,0) = 0$, the resulting equations may be uncoupled to yield

$$\frac{d^2}{dx^2} \bar{V}(x,s) - \frac{1}{L} \frac{dL}{dx} \frac{d}{dx} \bar{V}(x,s) - s^2 LC \bar{V}(x,s) = 0 \quad (5)$$

$$\frac{d^2}{dx^2} \bar{I}(x,s) - \frac{1}{C} \frac{dC}{dx} \frac{d}{dx} \bar{I}(x,s) - s^2 LC \bar{I}(x,s) = 0 \quad (6)$$

¹Hill, J. L. and Mathews, David, Transient Analysis of Systems With Exponential Transmission Lines (to be published).

²Coates, B. A. and Butler, Chalmers M., Transients on a Non-Uniform Transmission Line, Bulletin No. 11, University of Mississippi Engineering Experiment Station, University, Mississippi, May 1969.

or, considering only the voltage, Equation (5) becomes

$$\frac{d^2 \bar{V}}{dx^2} - \alpha \frac{d\bar{V}}{dx} - \frac{s^2}{c_p^2} \bar{V} = 0 \quad (7)$$

in which $c_p = 1/\sqrt{L(x)C(x)} = 1/\sqrt{L_0 C_0}$ is the speed of propagation of the wavefront. The differential equation for the voltage has the general solution

$$\bar{V}(x,s) = e^{\alpha x/2} \left[A(s)e^{k\sqrt{s^2 + \beta^2}} + B(s)e^{-k\sqrt{s^2 + \beta^2}} \right] \quad (8)$$

in which

$$\beta^2 = \frac{\alpha^2 c_p^2}{4} \quad (9)$$

$$k = \frac{x}{c_p} .$$

For the case of no reflections, $A(s) = 0$ in Equation (8). At the input to the transmission line,

$$\bar{V}(0,s) = B(s) = \bar{V}(s) \quad (11)$$

The inverse transform of $v(s)\exp(-k\sqrt{s^2 + \beta^2})$ is found by convolution with a known transform³

$$\begin{aligned} \mathcal{L}^{-1} \left\{ \bar{V}(s)e^{-k\sqrt{s^2 + \beta^2}} \right\} &= v(t - k) u(t - k) \\ &\quad - \beta k \int_0^t \frac{v(t - \tau) J_1(\beta\sqrt{\tau^2 - k^2}) u(\tau - k) d\tau}{\sqrt{\tau^2 - k^2}} , \end{aligned} \quad (12)$$

³Oberhettinger, F. and Badii, L., Tables of Laplace Transforms, No. 1.33, New York: Springer Publishing Co., 1973, p. 211.

in which u is the unit step function and J_1 is the first order Bessel function of the first kind, so that $V(x,t)$ becomes

$$V(x,t) = e^{\alpha x/2} \left[v\left(t - \frac{x}{c_p}\right) u\left(t - \frac{x}{c_p}\right) - \frac{\alpha x}{2} \int_0^t \frac{v(t - \tau) J_1\left(\frac{\alpha c_p}{2} \sqrt{\tau^2 - \left(\frac{x}{c_p}\right)^2}\right) u\left(\tau - \frac{x}{c_p}\right) d\tau}{\sqrt{\tau^2 - \left(\frac{x}{c_p}\right)^2}} \right] \quad (13)$$

or,

$$V(x,t) = \begin{cases} 0 & t \leq \frac{x}{c_p} \\ e^{\alpha x/2} \left[v\left(t - \frac{x}{c_p}\right) - \frac{x}{c_p} \int_0^{y_t} v[t - \tau(y)] J_1(y) \frac{dy}{\tau(y)} \right] & t \geq \frac{x}{c_p} \end{cases} \quad (14)$$

in which

$$\tau(y) = \frac{2}{\alpha c_p} \sqrt{y^2 + \left(\frac{\alpha x}{2}\right)^2} \quad (15)$$

$$y_t = \frac{\alpha c_p}{2} \sqrt{t^2 - \left(\frac{x}{c_p}\right)^2} \quad (16)$$

The solution given in Equations (13) and (14) consists of a term representing the amplified original pulse, delayed by a time x/c_p , and a term representing the distortion of the pulse as it travels down the line. It is now possible to find $V(x,t)$ for a given input pulse, e.g.,

$$v(t) = v_0 \left(e^{-\gamma_1 t} - e^{-\gamma_2 t} \right) \quad (17)$$

If the given input is too complicated to evaluate analytically, Equation (14) can be evaluated numerically. This is much simpler than solving Equations (3) and (4). Results for a typical data set (Table 1) and Equation (17) are given for a particular x (Figure 2)

and a particular t (Figure 3). In obtaining the data for Figures 2 and 3, a Gaussian integration subroutine, IGRAT, was used to evaluate the integral and a general Bessel function subroutine, BESJ, to evaluate $J_1(y)$. Run time on the CDC 6600 computer for a typical problem was less than 3 sec. Figure 4 shows a simplified flow graph of the program, and Table 2 gives a listing of the main program and DESUB.

TABLE 1. DATA FOR SAMPLE CASE

$\alpha = 0.4606 \text{ m}^{-1}$	$\gamma_1 = 6 \times 10^7 \text{ sec}^{-1}$
$L_0 = 13.3 \text{ nH}$	$\gamma_2 = 10^9 \text{ sec}^{-1}$
$C_0 = 833.3 \text{ pF}$	air dielectric ($\epsilon_r = 1$)
$c_p = 3 \times 10^8 \text{ m/sec}$	

TABLE 2. PROGRAM LISTING

```

PROGRAM TLINE(INPUT,OUTPUT,TAPE5=INPUT,TAPE6=OUTPUT)
COMMON/TCOM/ALF,BET1,BET2,X,T,C,BEPS
EXTERNAL DESUB
NAMLIST/TDAT/ALF,BET1,BET2,X,T,V0,H,DW,
$BEPS, EPSR, DT, FLAG, TMAX, XMAX
XMAX=10.0
TMAX=3.E-8
DT=2.E-9
C0=3.E8
EPSR=1.0
DW=.05
FLAG=1.
ALF=.4606
BET1=6.E7
BET2=1.E9
BEPS=1.E-3
V0=1.
H=.1
X=0.
T=2.666666666E-8
READ(5,TDAT)
WRITE(6,TDAT)
C=C0/SQRT(EPSR)
NOEQ=1
IF(FLAG.EQ.1.)GO TO 7
TXC=X/C
WRITE(6,6)T, TXC, TMAX
6  FORMAT(2X,*T = *,1PE10.3/3X,*TXC = *,1PE10.3/4X,
  $*TMAX = *,1PE10.3,/)
GO TO 9
7  CONTINUE
XCT=C*T
WRITE(6,8)X, XCT, XMAX
8  FORMAT(2X,*X = *, 1PE10.3/3X,*XCT = *,1PE10.3/4X,
  $*XMAX = *,1PE10.3,/)
9  CONTINUE
WRITE(6,5)
5  FORMAT(1H0,2X,*--- V(X,T) ---*,//)
1  CONTINUE
IF(FLAG.EQ.1.)GO TO 21
IF(T.LT.TXC)GO TO 11
GO TO 22
21 IF(X.GT.XCT)GO TO 11
22 CONTINUE
CT=C*T
WT=.5*ALF*SORT(CT*CT-X*X)
CALL IGRAT(0.,WT,DW,NOEQ,DESUB,TINT)
GO TO 12

```

TABLE 2. (Concluded)

```

11 VXT=0.0
    GO TO 14
12 CONTINUE
    VXT=V0*EXP(ALF*X/2.)*(EXP(BET1*(X-CT)/C)-
$EXP(BET2*(X-CT)/C)-X*TINT)
14 CONTINUE
    WRITE(6,2)X,T,VXT
    IF(FLAG.EQ.1)GO TO 3
    T=T+DT
    IF(T.LE.TMAX)GO TO 1
    GO TO 4
3 CONTINUE
    X=X+H
    IF(X.LE.XMAX)GO TO 1
4 CONTINUE
2 FORMAT(2X,*V(*,1PE10.3,*,*,1PE10.3,*) = *,1PE10.3)
    END
    SUBROUTINE DESUB(W,F,NOEQ)
    COMMON/TCOM/ALF,BET1,BET2,X,T,C,BEPS
    TAU=SQRT(4.*W*W/(ALF*ALF)+X*X)/C
    N=1
    CALL BESJ(W,N,BJ1,BEPS,NERR)
    F=(EXP(-BET1*(T-TAU))-EXP(-BET2*(T-TAU)))*BJ1/(C*TAU)
    RETURN
    END

```

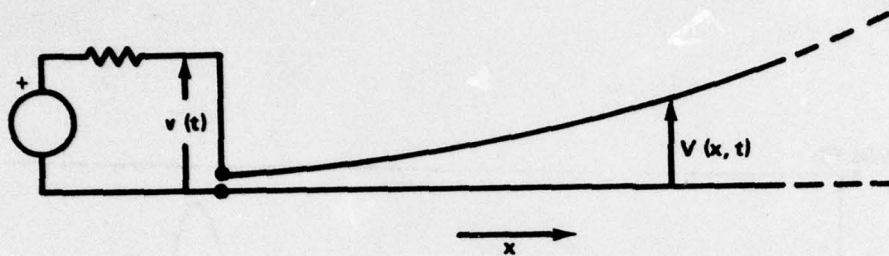


Figure 1. Schematic diagram.

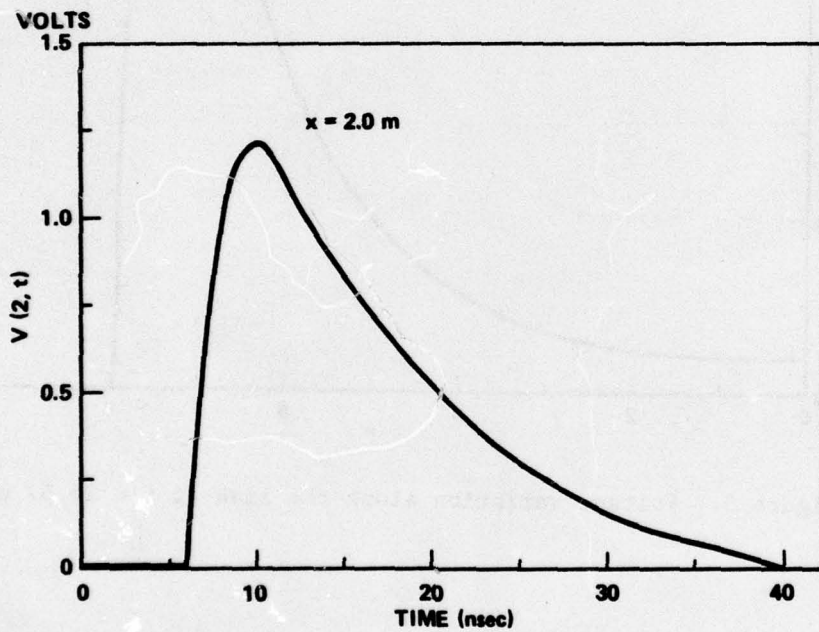


Figure 2. Voltage variation at $x = 2$ m from the input to the line.

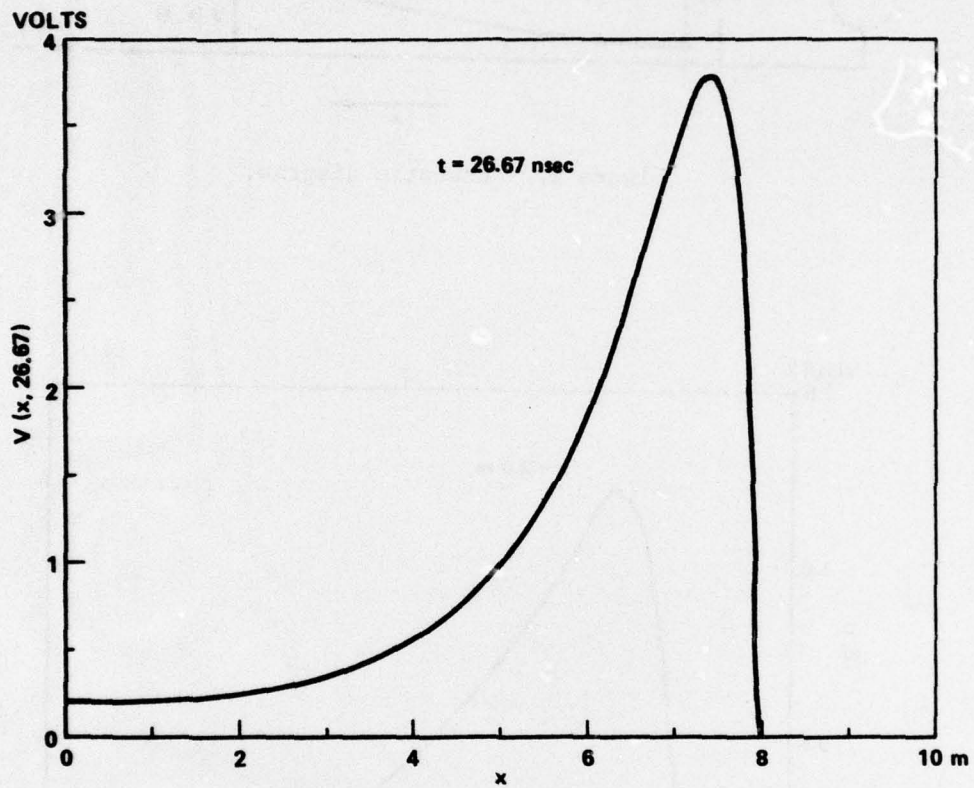


Figure 3. Voltage variation along the line at $t = 26.67$ nsec.

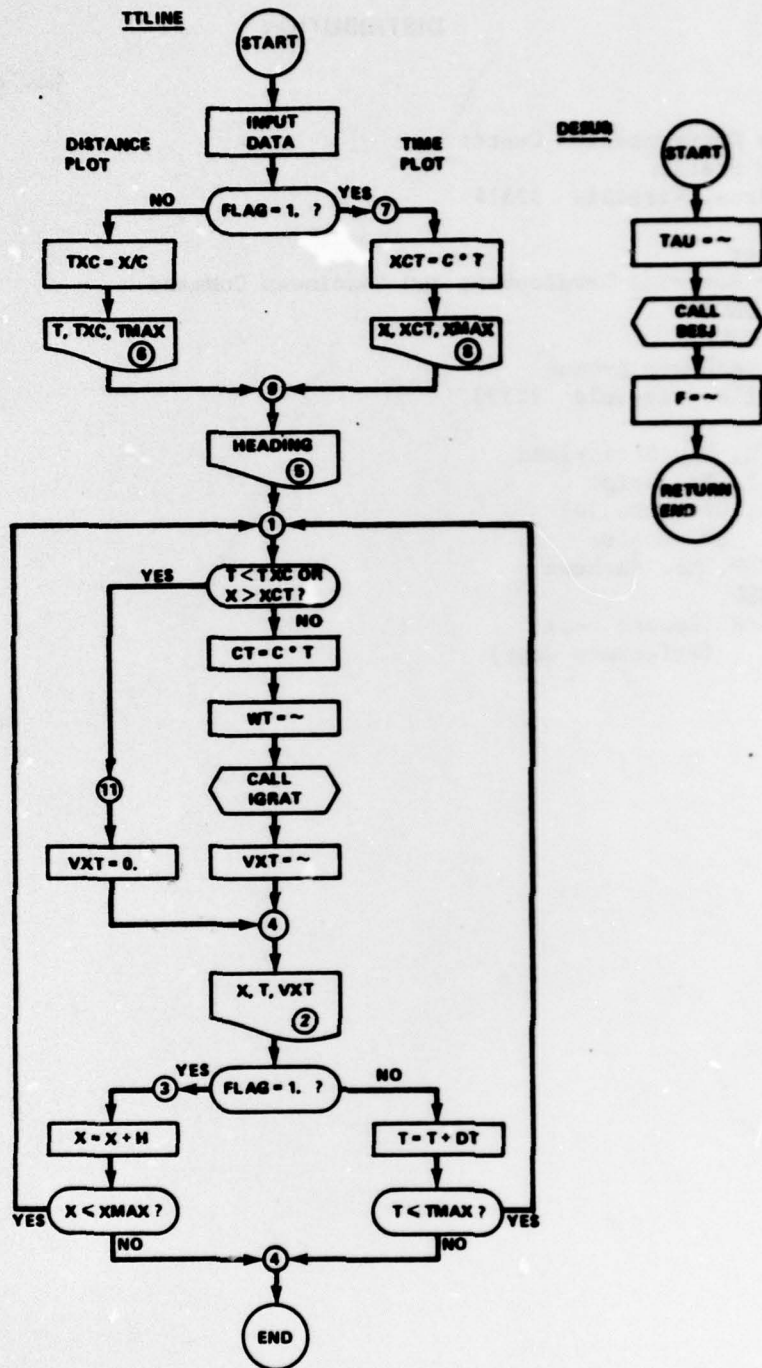


Figure 4. Flow diagram of TLINE.