

AD-A036 739

MARYLAND UNIV COLLEGE PARK DEPT OF PSYCHOLOGY

F/G 5/9

THE INFLUENCE OF JOB CHARACTERISTICS AND THE FAMILY ON THE PROP--ETC(U)  
NOV 76 R A SNYDER, A HOWARD, T H HAMMER

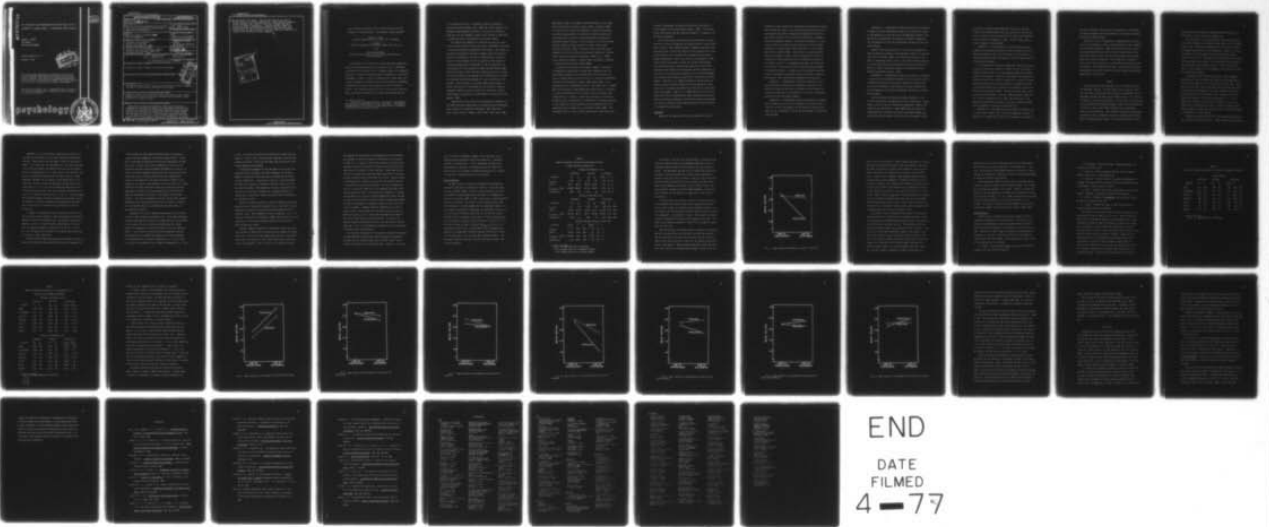
N00014-67-A-0239-0025

UNCLASSIFIED

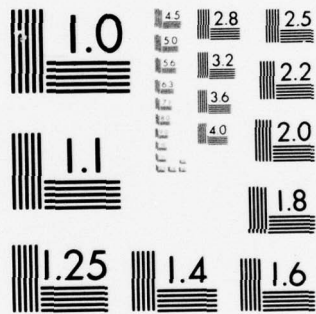
RR-12

NL

| OF |  
AD  
A036739



END  
DATE  
FILMED  
4 - 77



MICROCOPY RESOLUTION TEST CHART  
NATIONAL BUREAU OF STANDARDS-1963-A

ADA 036739

12

THE INFLUENCE OF JOB CHARACTERISTICS AND THE FAMILY ON THE  
PROPENSITY TO CHANGE CAREERS: AN EXPECTANCY THEORY APPROACH

ROBERT A. SNYDER  
ANN HOWARD  
TOVE HELLAND HAMMER

Research Report No. 12

November, 1976



This research was supported by the Personnel and Training Research Programs, Psychological Sciences Division, Office of Naval Research under Contract No. N00014-67-A-0239-0025, Contract Authority Identification Number, NR 151-350, Benjamin Schneider and H. Peter Dachler, Principal Investigators.

Reproduction in whole or part is permitted for any purpose of the United States Government. Approved for public release; distribution unlimited.

psychology



UNCLASSIFIED

SECURITY CLASSIFICATION OF THIS PAGE (When Data Entered)

REPORT DOCUMENTATION PAGE		READ INSTRUCTIONS BEFORE COMPLETING FORM
1. REPORT NUMBER ② Research Report, No. 12 ✓	2. GOVT ACCESSION NO.	3. RECIPIENT'S CATALOG NUMBER
4. TITLE (and Subtitle) ⑥ The Influence of Job Characteristics and the Family on the Propensity to Change Careers: An Expectancy Theory Approach.		5. TYPE OF REPORT & PERIOD COVERED ⑭ RR-12
7. AUTHOR(s) ⑩ Robert A. Snyder, Ann Howard Tove Helland/Hammer		6. PERFORMING ORG. REPORT NUMBER
9. PERFORMING ORGANIZATION NAME AND ADDRESS Department of Psychology ✓ University of Maryland College Park, Maryland 20742		8. CONTRACT OR GRANT NUMBER(s) ⑮ N00014-67-A-0239-0025 ✓
11. CONTROLLING OFFICE NAME AND ADDRESS Personnel and Training Research Programs Office of Naval Research (Code 458) Arlington, Virginia 22217		10. PROGRAM ELEMENT, PROJECT, TASK AREA & WORK UNIT NUMBERS 61153N RR 042-04; RR 042-04-02 NR 151-350
14. MONITORING AGENCY NAME & ADDRESS (if different from Controlling Office) ⑬ R04204 ⑰ R0420402		12. REPORT DATE ⑪ November, 1976
16. DISTRIBUTION STATEMENT (of this Report) Approved for public release; distribution unlimited.		13. NUMBER OF PAGES 43 ⑫ 50 p.
17. DISTRIBUTION STATEMENT (of the abstract entered in Block 20, if different from Report)		15. SECURITY CLASS. (of this report) Unclassified
18. SUPPLEMENTARY NOTES The Computer Science Center, University of Maryland, partially supported the extensive data analyses required for this report.		15a. DECLASSIFICATION/DOWNGRADING SCHEDULE
19. KEY WORDS (Continue on reverse side if necessary and identify by block number) Expectancy Theory; Instrumentality Theory; VIE Theory; Careers; Career Change; Work and Family; Job Choice; Occupational Preference; Career Satisfaction; Academic Careers		
20. ABSTRACT (Continue on reverse side if necessary and identify by block number) Valence-Instrumentality-Expectancy (VIE) theory was used as a framework for exploring the dynamics of occupational preferences and satisfactions of professors and department chairmen and the processes underlying the intention of professors to make a mid-career change into the administrative role. The preferred job was differentiated in each sample as predicted, but the different components of the VIE models did not uniquely predict attraction, satisfaction, and choice		

D D C  
 Declassified  
 MAR 11 1977  
 PUBLIC

UNCLASSIFIED

SECURITY CLASSIFICATION OF THIS PAGE(When Data Entered)

→ as specified by the theory. The chairmen rated the two jobs as equally attractive, but the professors as a whole were more negative to the chairman's job, and only a minority indicated they were willing to accept a chairmanship. Subscale analyses showed that greater power was associated with the job of chairman and greater autonomy with the job of professor, and that these job characteristics better suited the desires of the incumbents.

ACCESSION for

NTIS  Write Section  
DDC  Staff Section  
UNANNOUNCED  
JUSTIFICATION

BY DISTRIBUTION/AVAILABILITY CODES

Dist.	AVAIL.	or SPECIAL
A		

UNCLASSIFIED

SECURITY CLASSIFICATION OF THIS PAGE(When Data Entered)

The Influence of Job Characteristics and the Family on the  
Propensity to Change Careers: An Expectancy Theory Approach<sup>1</sup>

Robert A. Snyder  
Graduate School of Business, University of Alabama

Ann Howard  
American Telephone and Telegraph Company, New York, N.Y.

and

Tove Helland Hammer  
New York State School of Industrial and Labor Relations,  
Cornell University

The purpose of this study was to explore why some academicians aspire to and accept administrative positions (e.g., a department chairmanship) while others do not. Although movement up a managerial hierarchy is a generally accepted symbol of progress for the typical "management trainee" in industry, movement from a professional position to a managerial or administrative role may take on a different connotation and involve a more complex set of decision-making factors. This should be especially true in the university setting, where individuals have many years of highly specialized training

---

<sup>1</sup>The authors thank Ben Schneider, Pete Dachler, Gene Hoffman, Glen Goldmark, and Bob Hannan for their assistance. The Computer Science Center of the University of Maryland partially supported the extensive data analyses required.

in the professional field. Although a university professor's regularized status passages (Hall, 1976) may include movement from graduate student/teaching assistant or instructor to assistant, associate, and full professor, moving into a university administrative position may be interpreted as a mid-career change.

One appropriate framework for examining the processes underlying individual decisions concerning career preferences and choices is Valence-Instrumentality-Expectancy (VIE) theory. With regard to occupational preference, VIE theory suggests that the attractiveness of an occupation to a person is a monotonically increasing function of the algebraic sum of the products of the valences of relevant outcomes and his conceptions of the instrumentality of the occupation for the attainment of these outcomes (Vroom, 1964). Valence (V) refers to the individual's degree of positive or negative value attached to the outcome, and instrumentality (I) refers to the extent to which the occupation is seen as leading to the outcome. Thus VIE theory is a rational model which attempts to explain how cognitive (instrumentality) and affective (valence) components combine to yield an index of an individual's overall feeling about an occupation or other object, or a course of action (Wanous, 1972).

Combinations of the valence and instrumentality components of VIE theory have been demonstrated to differentiate the preferences among students for occupations (Englander, 1960; Holmstrom, & Beach, 1973; Mitchell & Knudsen, 1973; Sheard, 1970; Vroom, 1964,

1966; Wanous, 1972), for academic areas (Muchinsky & Fitch, 1975), and for organizations (Lawler, Kuleck, Rhode, & Sorenson, 1975). In a similar vein, valence-instrumentality indexes have also been related to choice behaviors or behavioral intentions rather than just preferences or relative attractiveness among occupations or occupation-related settings. Sums of products of the two variables have been shown to predict intention to retain a Navy career (Mitchell & Albright, 1972), intention to stay with a Navy career compared to a civilian alternative (Schneider, 1976), and organizational choice among accounting graduates (Lawler et al., 1975), nurses (Sheridan, Richards, & Slocum, 1975), and master's graduates in Industrial Administration (Vroom, 1966).

According to the tenets of VIE theory, however, valence and instrumentality should predict occupational preference, but the choice among occupations (or organizations) should be better predicted if these products are multiplied by an individual's expectancy of attaining the occupation (Lawler, 1973; Vroom, 1964). This expectancy term is represented by the E in VIE theory and is included when the distinction is made between the attractiveness of an object or action (predicted by V and I) and the force on a person to act (predicted by V, I, and E). Accordingly, the force on a person to attempt to enter an occupation is a monotonically increasing function of the product of the attractiveness of the occupation and of his expectancy that his attempt will be successful (Vroom, 1964). The expectancy term is a reality factor that restrains one's motivation

to enter an occupation, no matter how attractive, when there is little probability of being accepted (Lawler, 1973). This reality factor helps explain why the preferred occupation is frequently not the chosen occupation.

Only a few studies have used the total VIE formula to explain the force to enter an occupation, and these have had limited success. Rosen (cited in Vroom, 1964) performed a laboratory experiment with high school boys in which the valence of five occupations was rated by the subjects, but instrumentality and expectancy were experimentally manipulated. Their force to enter an occupation, as measured by their willingness to return for further testing about their qualifications for the job, was shown to be a function of both the attractiveness of the occupations and their expectancy of attaining it, but there was no evidence of the interaction between the variables such as would be predicted by the VIE multiplicative formula. Sheridan et al. (1975) successfully used the total VIE model to predict job choice among 49 nursing graduates but noted that due to a favorable job market, few nurses did not receive the offers they wanted. Lawler et al. (1975) found that the total VIE model was related to organizational choice among accounting graduates, but adding the expectancy term did not increase the researchers' ability to predict choice beyond predictions from the valence x instrumentality index alone.

#### Hypotheses

Because of the theoretical distinction between the two VIE

propositions about occupational preferences and occupational choices, both formulas were used in this study to differentiate the relative attractiveness ascribed by professors and department chairmen to each other's jobs and the inclinations of professors to change to the job of department chairman. The preferred occupation is identified as the one considered the most attractive, and the chosen occupation is the occupation toward which there is the strongest possible force (Vroom, 1964). Since there is no guarantee that a decision to attempt to enter a certain occupation will result in attainment of that occupation, due to circumstances outside the individual's control, it is suggested that actual job choice may not be the best criterion with which to test the total VIE model of occupational choice. Instead, the criterion applied here was to ask if professors would accept the job of chairman, assuming it were offered. Thus the following hypotheses were formulated:

Hypothesis 1. (Occupational attraction) Professors' anticipated satisfaction with the job of department chairman will be positively related to the sum of the products of the valences of relevant outcomes and the instrumentality of the job of department chairman for attaining those outcomes.

Hypothesis 2. (Occupational attraction) Department chairmen's past satisfaction with the job of professor will be positively related to the sum of the products of the valences of relevant outcomes and the instrumentality of the job of professor for attaining those outcomes.

Hypothesis 3. (Occupational choice) The intention of professors to accept the job of department chairman will be positively related to the expectancy of attaining the job of department chairman times the sum of the products of the valences of relevant outcomes and the instrumentality of the job of department chairman for attaining those outcomes.

Another factor which may result in the lack of congruence between occupational preference and occupational choice is a perceived lack of ability (Vroom, 1964). As a variation on the total VIE model of occupational choice, then, it was predicted that expectancy of success would combine multiplicatively with the valence-instrumentality index of the attractiveness of an occupation to help determine occupational choice. Thus:

Hypothesis 4. (Occupational choice) The intention of professors to accept the job of department chairman will be positively related to expectancy of success on the job of department chairman times the sum of the products of the valences of relevant outcomes and the instrumentality of the job of department chairman for attaining those outcomes.

Logically related to preferring another occupation is the relative satisfaction one experiences in one's present job. A hypothesis similar to that for occupational preference is made by VIE theory for job satisfaction. Vroom (1964) noted that there are considerable data indicating the direct relationship between job satisfaction and the extent to which jobs are instrumental to the

attainment of outcomes assumed generally attractive to persons. Mitchell and Albright (1972) found that satisfaction with the job and with the Navy could be predicted for 51 naval aviation officers with a valence x instrumentality index. For this study, then, a further hypothesis was formulated:

Hypothesis 5. (Job satisfaction) The satisfaction of both professors and department chairmen with their present jobs will be positively related to the sum of the products of the valences of relevant outcomes and the instrumentality of their present jobs for attaining those outcomes.

A final hypothesis related to occupational choice was the prediction of the force on a person to remain in a job in which he is presently working; that is, to intend not to change jobs although another may be offered. According to VIE theory, the expectancy of the person that he will be able to remain on his present job should combine multiplicatively with the valence x instrumentality index of the attractiveness of the present job to determine intention to remain on the job (Vroom, 1964). The previously mentioned studies on job retention (Mitchell & Albright, 1972; Schneider, 1976) did not include an expectancy term in their VIE formulations. The expectancy of being able to remain on the job was operationalized here as expectancy of success on the present job.

Hypothesis 6. (Job stability) The intention of professors not to stay on their present jobs if the job of department chairman is offered will be negatively related to the expectancy of success on

the job of professor times the sum of the products of the valences of relevant outcomes and the instrumentality of the job of professor for attaining those outcomes.

The thrust of the six hypotheses in combination was an evaluation of the preferences, choices, and satisfactions of the incumbents of two related occupations. Those holding one of the jobs (department chairmen) had previously held the other job (professor) and could provide both insight into their own occupation and hindsight about their previous occupation. On the other hand, professors could provide insight about their own occupation and foresight about a prospective job of department chairman. These related perceptions were expected to provide interesting contrasts between expectations, remembrances, and realities.

#### Method

Two questionnaires were developed, one for professors and one for department chairmen. The questionnaires were identical except that the wording and presentation of questions acknowledged that the department chairmen had made a career change and were in a different occupational role from the professors. The main body of the questionnaires consisted of 49 outcome statements drawn from the professional literature as factors that might influence career preferences, choices, and satisfactions. The statements represented seven general categories: power, achievement, security, autonomy, social factors, family considerations and esteem. The items were phrased to repre-

sent both positive and negative outcomes and were presented in a random order to avoid a possible response bias.

The instructions on the questionnaires asked the participants to rate the statements three separate times, each time on five-point Likert scales. The outcome statements were rated for (a) valence, or "how desirable they are to you personally," scored +2 to -2, (b) instrumentality of the present job for attaining the outcomes, scored +4 to 0, and (c) instrumentality of the other job for attaining the outcomes, also scored +4 to 0 (professors rated chairman's job and chairmen rated professor's job). Inclusion of the zero point in scoring valence and instrumentality was a means of eliminating nonrelevant outcomes.

In addition to the three ratings of the outcome statements, questionnaire items also asked both groups for their expectancy of success on both jobs and their satisfaction with both jobs. Satisfaction on the other job was measured by having chairmen rate past satisfaction on the professor's job, while professors rated anticipated satisfaction on the chairman's job. Professors were also asked their expectancy of attaining a chairman's job. It was assumed that chairmen could re-attain a professor's job, so the question was not asked of this group. Similarly, professors were asked a question on behavioral intention; that is, would they accept a chairmanship if it were offered.

The questionnaires were sent to all male professors and department chairmen of a major university. Usable information was returned

anonymously from 268 professors (55%) and 45 department chairmen (45%).

## Results

### Hypothesis Tests

The results of the tests of the six hypotheses are shown in Table 1. The first two hypotheses attempted to predict for both professors and department chairmen occupational attraction to (expected satisfaction with) the others' job. Support for these hypotheses can be found in the first and second rows of Table 1. Anticipated satisfaction with the job of department chairman on the part of professors was predicted by the ( $V \times I$ ) index for the job of department chairman with  $p < .001$ . The same formula with instrumentality of the inappropriate job, that of professor, correlated with the same criterion to a much lesser degree (.23 compared to .53). This difference was significant at  $p < .001$  according to a t-test between dependent correlations, which supported the usefulness of the theory for differentiating occupational preference.

Department chairmen's past satisfaction with the job of professor was predicted, as stated by Hypothesis 2, by the ( $V \times I$ ) index for the job of professor ( $r = .43$ ,  $p < .01$ ). Where instrumentality of the alternative job was used in the same formula, the correlation with past satisfaction with the professor's job was lower ( $r = .31$ ), although the difference between the two correlations was not statistically significant for this sample.

Table 1  
Correlations of VIE Components and Criteria

VIE Component	Professors (N = 268)			Chairmen (N = 45)	
	Present Sat- isfaction as Professor	Anticipated Satisfaction as Chairman	Intention to Choose Job of Chairman	Past Satis- faction as Professor	Present Sat- isfaction as Chairman
(Vx1):Professor's Job	.42 <sup>****</sup>	.23 <sup>****</sup>	.13 <sup>*</sup>	.43 <sup>***</sup>	.19
(Vx1):Chairman's Job	.08	.53 <sup>****</sup>	.44 <sup>****</sup>	.31 <sup>*</sup>	.41 <sup>*</sup>
E <sub>success</sub> :Professor's Job	.30 <sup>****</sup>	.15 <sup>*</sup>	.05	.58 <sup>****</sup>	.13
E <sub>success</sub> :Chairman's Job	.07	.63 <sup>****</sup>	.36 <sup>****</sup>	.34 <sup>*</sup>	.48 <sup>****</sup>
E <sub>attain</sub> :Chairman's Job	.18 <sup>***</sup>	.35 <sup>****</sup>	.21 <sup>****</sup>		
E <sub>success</sub> x (Vx1):Professor's Job	.43 <sup>****</sup>	.24 <sup>****</sup>	.11	.48 <sup>****</sup>	.19
E <sub>success</sub> x (Vx1):Chairman's Job	.11	.66 <sup>****</sup>	.47 <sup>****</sup>	.20	.45 <sup>***</sup>
E <sub>attain</sub> x (Vx1):Chairman's Job	.18 <sup>****</sup>	.53 <sup>****</sup>	.40 <sup>****</sup>		

\* p < .05  
 \*\* p < .01  
 \*\*\*\* p < .001

Hypothesis 5, job satisfaction, concerned the prediction of satisfaction with present job for both professors and department chairmen. These results are also shown in the first two rows of Table 1. For professors, the appropriate ( $V \times I$ ) index correlated .42 ( $p < .001$ ) with present satisfaction with the job of professor, while the inappropriate ( $V \times I$ ) index, that for the chairman's job, did not correlate significantly with the same criterion. Among department chairmen, the correlation of the appropriate ( $V \times I$ ) index with satisfaction with the chairman's job was statistically significant ( $r = .41$ ,  $p < .01$ ), and the absolute magnitude of this correlation was much higher than that of present satisfaction and the ( $V \times I$ ) index for the other job ( $r = .19$ , ns). For both samples the difference between the two correlations was significant ( $p < .01$  for chairmen,  $p < .001$  for professors), which supported the usefulness of the theory for differentiating satisfaction with one's present job.

In summary, the hypotheses about occupational attraction and job satisfaction were supported in that the appropriate VIE theory components predicted anticipated, past, and present satisfactions. Moreover, the ( $V \times I$ ) index from the instrumentality of the job under consideration showed its superiority to the ( $V \times I$ ) index for the instrumentality of another job in making these predictions in three out of four comparisons.

Although the VIE theory predictions were supported in terms of predicting satisfaction with two different jobs, the components of

theory selected for each type of prediction were not necessarily superior to other components of the theory measured here. Professors' anticipated satisfaction with the job of department chairman was as well or better predicted by expectancy of success on the chairman's job and by the two complete VIE models as by the  $(V \times I)$  index. Similarly chairmen's past satisfaction with the job of professor was as well or better predicted by their expectancy of success on the professor's job and by the total VIE model using expectancy of success on the professor's job as by the  $(V \times I)$  index. Prediction of present satisfaction was also as accurate from the expectancy of success term (for chairmen only) or the total VIE model using expectancy of success on the present job (for both samples). Thus the VIE components could for the most part identify preferences and satisfactions with one job in contrast to another, but the components were not differentiated from each other as specified by the theory.

Hypotheses 3, 4, and 6, regarding occupational choice and job stability, were tested with professors only. Since these hypotheses concerned the behavioral intention to change from one job to another, it was assumed that the chairmen had already made this change. Support for Hypotheses 3 and 4 can be found in the third column of Table 1. The intention to accept the job of department chairman was predicted by the complete VIE models using either attainment as the expectancy term, supporting Hypothesis 3 ( $r = .40, p < .001$ ) or success as the expectancy term, supporting Hypothesis 4 ( $r = .47,$

$p < .001$ ). The latter correlation was significantly higher than the former ( $t = 2.22$ ,  $p < .05$ ), indicating that expectancy of success was a better multiplier in the total VIE model than was the more traditional expectancy of attainment.

The specified components of the VIE model did not predict occupational choice any better than other components of the model, however, as found with the predictions of occupational attraction and job satisfaction. In particular, the  $(V \times I)$  term correlated as highly with intention to choose the chairman's job as did the best total VIE model. Both expectancy terms also correlated significantly with intention to change jobs, although expectancy of success had a significantly higher correlation than did expectancy of attainment ( $p < .01$ ).

Neither the total VIE model nor other VIE components predicted propensity not to choose the chairman's job, or job stability, when expectancy of success and instrumentality were measured for the professor's job. Hence Hypothesis 6 was not supported. This is in contrast to the results of Schneider (1976), who found that a  $(V \times I)$  index for a civilian job correlated negatively with intention to make the Navy one's career.

Mitchell (1974) has pointed out that Vroom's theory was originally designed to make within individual and not between individual predictions. Since this study compared the reactions to two alternative jobs, the responses of the subjects were scored ipsatively as well as normatively. That is, the  $(V \times I)$  index for each job

was compared for each person, and the magnitude of the difference was recorded to reflect the extent of preference for the present or other job. In addition, the simple direction of preference was recorded so that one individual's strong reaction could not overwhelm several individuals' milder reactions. These magnitude and direction of preference scores were then correlated with the occupational attraction and job satisfaction criteria. Results showed no advantage of this method of scoring over the normative method in terms of the size of the correlation. A similar procedure was used for an ipsative comparisons of the complete VIE models using the two expectancy terms. Correlations with propensity to choose the chairman's job using this ipsative method were either the same or lower than correlations using the normative method, again demonstrating no improvement in strength of prediction from this additional refinement. Although Schneider (1976) was better able to predict career intent between two alternatives using an ipsative method of scoring a (V x I) index, when adjustments were made for the initial level of one of the alternatives, the two scoring methods produced correlations with the criterion of about the same magnitude. Still, he concluded that consideration of an alternative influenced career attractiveness.

One possible explanation for the greater strength of Schneider's findings compared to those here, both with respect to predicting job stability and ipsative predictions of career intent, may be related to the polarity of the alternatives. A Navy vs. a civilian

job, as studied by Schneider, appears to be a much more clearly differentiated occupational choice than professor vs. department chairman, as studied here. In fact, department chairmen often perform many of the duties of professors as well as those of an administrator, and no change in employing organization is necessarily implied in a change from one job to the other.

#### Mean Differences

The mean scores of ratings by the professors and department chairmen on both jobs are presented in Table 2. Since there were only two treatment groups, t-tests for the significance of difference between correlated means were calculated, as recommended by Guilford and Fruchter (1973, p. 270), rather than a repeated-measures analysis of variance. The t-tests in the right-hand column show the differences in ratings between the two independent samples. As can be seen, the opinions of professors and department chairmen were not significantly different concerning the job each had actually performed, that of professor, with respect to their average expectancy of success on the job, the attractiveness of the job  $\Sigma(V \times I)$ , the force on them to remain in the job  $[E_{\text{success}} \times \Sigma(V \times I)]$ , or satisfaction with the job. The opinions of the two samples with respect to the department chairman's job were significantly different from each other on all of these same variables, however. The department chairmen rated their own job significantly higher than did the professors.

Table 2  
Means and Standard Deviations of Variables Relevant  
to Both Present and Other Job

Ratings of Professor's Job								
Variable	Professors		Chairmen		Difference			
	$\bar{X}_1$	$S_1$	$\bar{X}_2$	$S_2$	$\bar{X}_1 - \bar{X}_2$	$t^a$	p	
$E_{\text{success}}$	3.22	.72	3.16	.90	+ .06	.50	ns	
$\Sigma(VxI)$	95.15	38.54	99.49	35.22	-4.34	.71	ns	
$E_{\text{success}} \times \Sigma(VxI)$	316.06	168.59	317.13	156.40	-1.07	.04	ns	
Satisfaction	3.99	.84	4.07	.60	- .08	.62	ns	
Ratings of Chairmen's Job								
Variable	Professors		Chairmen		Difference			
	$\bar{X}_3$	$S_3$	$\bar{X}_4$	$S_4$	$\bar{X}_3 - \bar{X}_4$	$t^a$	p	
$E_{\text{success}}$	2.11	1.67	3.09	.85	- .98	3.92	.001	
$\Sigma(VxI)$	74.96	44.70	99.64	38.19	-24.68	3.52	.001	
$E_{\text{success}} \times \Sigma(VxI)$	181.19	167.15	321.51	176.49	-140.32	5.20	.001	
Satisfaction	2.48	1.15	3.84	.77	-1.36	7.56	.001	
Difference Between Ratings of Both Jobs								
Variable	$\bar{X}_1 - \bar{X}_3$		$t^b$	p	$\bar{X}_3 - \bar{X}_4$		$t^b$	p
$E_{\text{success}}$	+ 1.11	9.25	.001	+ .07	.30	ns		
$\Sigma(VxI)$	+20.19	4.28	.001	- .15	.01	ns		
$E_{\text{success}} \times \Sigma(VxI)$	+134.87	7.33	.001	-4.38	.09	ns		
Satisfaction	+ 1.51	16.78	.001	+ .23	1.44	ns		

Note: N = 268 Professors, 45 Chairmen

<sup>a</sup>t-test between means for independent samples

<sup>b</sup>t-test between means for correlated samples

The t-tests in the last four rows of Table 2 indicate that the relatively higher ratings of the department chairman's job by its incumbents were the result of low ratings of that job by the professors. The department chairmen did not differentiate between the two jobs in terms of satisfaction, attractiveness, expectancy of success on the job or force to remain in the job. But on the average the professors perceived that the chairman's job would offer them a lower expectancy of success, be less likely to lead to desired outcomes, generate less force toward movement into the job, and bring them less satisfaction in comparison to their own job of professor.

Put another way, the findings in Table 2 illustrate an interaction between the job being rated and the job held by the rater. For all terms listed, the interaction arose because professors, on the average, had less favorable attitudes toward the job of chairman. This phenomenon is illustrated in Figure 1, which shows the average ratings of expectancy of success by each sample for each job. Diagrams of the remaining variables in Table 2 are not shown but would have a similar form.

When the data were broken down further to compare the professors who said they would accept the chairman's job with the professors who said they would not accept the chairman's job, the findings of Table 2 were found to pertain primarily to the professors who would reject a chairmanship. Among professors who would accept the chairman's job, there was no differentiation between ratings of the two

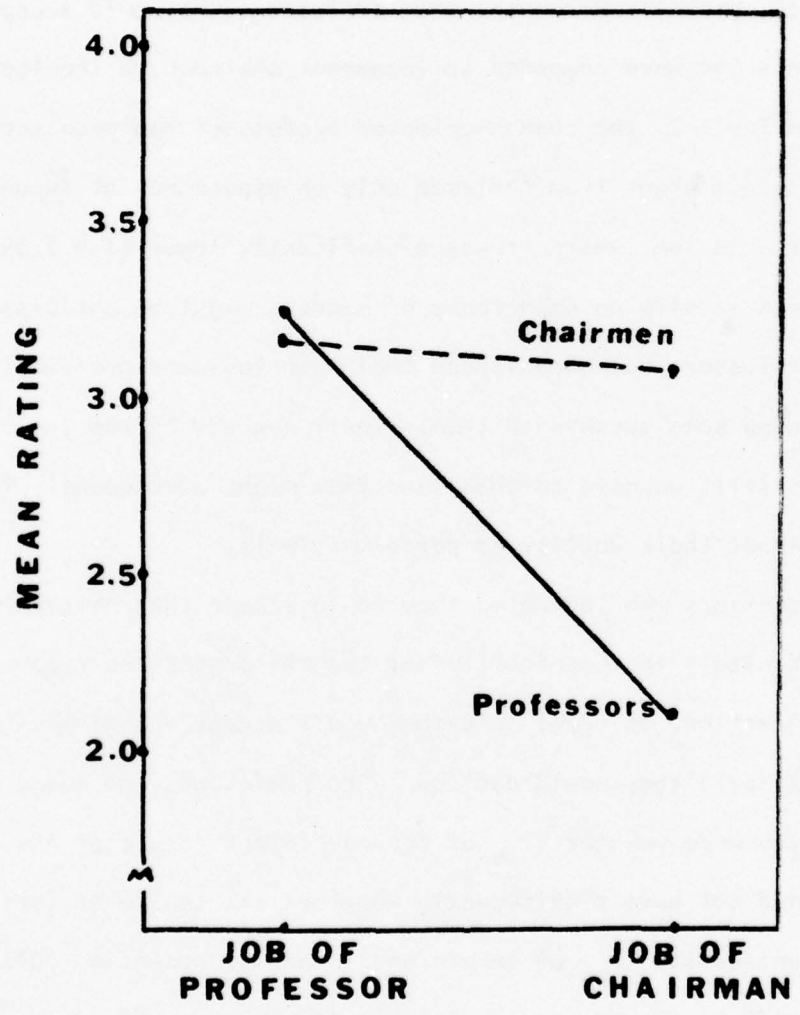


Fig. 1. Mean ratings of expectancy of success in each job.

jobs on any of the variables in Table 2 except expectancy of success. Here even the professors who would accept the chairman's job evaluated their expectancy of success on the professor's job as significantly higher than their expectancy of success on the chairman's job ( $t = 2.64$ ,  $p < .01$ ). Moreover, when professors who would accept the chairman's job were compared to incumbent chairmen on the four variables in Table 2, the change-oriented professors had mean scores significantly different from chairmen only on expectancy of success on the chairman's job, where it was significantly lower ( $t = 2.35$ ,  $p < .05$ ). These results on expectancy of success might be anticipated, since the professors had experienced their own jobs and presumably had experienced some success on them. Their success on the job of chairman was still unknown to them, and they might consequently lack confidence about their ability to perform it well.

The professors who indicated they would accept the chairman's job were definitely in the minority--of the 244 professors responding to the question, 66 (27%) said they would accept a chairmanship and 178 (73%) said they would decline. The professors who would accept the job were younger ( $r_{pb}$  of age and intent to accept =  $-.16$ ,  $p < .01$ ) but did not have significantly more or less tenure at this particular university ( $r_{pb}$  of tenure and intent to accept =  $-.07$ , ns). The findings on age are consistent with previous findings on propensity to leave one job for another among middle-aged men (Parnes & Nestel, 1975). But the same authors found that tenure was inversely related to propensity to make a job change, and

explained this as a result of the job security and fringe benefits that typically accrue with experience in an organization. In this study, the decision to take another job did not necessarily involve leaving the organization. Moreover, job security would be guaranteed by the tenure system at universities.

Parnes and Nestel (1975) also found that job satisfaction was inversely related to propensity for mid-career change. This finding was replicated and expanded in this study. Intention to accept the chairman's job was negatively correlated with satisfaction with the present job of professor ( $r = -.21, p < .001$ ) and positively correlated with anticipated satisfaction in the job of chairman ( $r = .61, p < .001$ ). This may be a reflection of the frequently found inverse relationship between job satisfaction and turnover (Vroom, 1964).

#### Subscale Results

The 49 items on the questionnaire were selected a priori to represent 7 subscales of 5 to 10 items each. An analysis of the subscales was undertaken to provide some additional information about the underlying dynamics in a preference for each of the two jobs. Specifically, which types of outcomes are more desirable to professors vs. chairmen? And which type of job is considered to lead to which types of outcomes? Some representative items in each of the subscales are listed below.

1. Power - "directing other people's activities;" "Assuming responsibility for the work of others"

2. Achievement - "Challenging work;" "Making meaningful use of my skills and abilities"

3. Security - "Earning enough to meet my financial needs;" "Working under stress" (scored negatively)

4. Autonomy - "Finding solutions to problems independently;" "Freedom from organizational constraints (such as committee meetings, time schedules, specified hours of work)"

5. Social - "Support from my peer group against criticism and attack;" "Congenial interpersonal relations with co-workers"

6. Family - "Spending time regularly with my family;" "Satisfaction of my spouse with my job"

7. Esteem - "Esteem from those in lower-level positions;" "Prestige among friends and neighbors"

The meaning of the subscale results is best understood by integrating the findings in Tables 3, 4, 5, and 6. Table 3 shows the mean valence of outcomes by subscale for each sample, Table 4 shows internal consistency reliability estimates by subscale for valence and instrumentality, Table 5 shows the correlations of subscale valences and the various criteria, and Table 6 shows the mean instrumentality of each job for outcomes by subscale. Because of the large sample size of the professors, within group comparisons of instrumentality ratings of each job shown in Table 6 were all statistically significant, even when the more conservative t-tests for independent samples were calculated rather than t-tests for correlated samples. The practical significance of the findings in

Table 3  
Means and Standard Deviations for Valence of Outcomes By Subscale

Subscale	Valence Ratings						
	Professors		Chairmen		Difference		
	$\bar{X}_1$	$S_1$	$\bar{X}_2$	$S_2$	$\bar{X}_1 - \bar{X}_2$	t	p
Power	.42	.49	.76	.44	-.34	4.25	.001
Achievement	1.30	.35	1.31	.31	-.01	.05	ns
Security	1.26	.34	1.15	.29	+.11	2.20	.05
Autonomy	.98	.48	.77	.41	+.21	2.80	.01
Social	.77	.40	.74	.35	+.03	.48	ns
Family	.95	.47	.93	.41	+.02	.29	ns
Esteem	.81	.42	.93	.42	-.12	1.79	ns

---

Note: N = 268 Professors, 45 Chairmen

Table 4  
Spearman-Brown Internal Consistency Reliability  
Estimates of Subscales

	No. Items	Chairmen			Professors		
		V	I <sub>c</sub>	I <sub>p</sub>	V	I <sub>c</sub>	I <sub>p</sub>
Power	9	.74	.81	.95	.75	.77	.81
Achievement	10	.62	.78	.74	.71	.76	.81
Security	8	.59	.54	.59	.25	.60	.72
Autonomy	6	.37	.40	.20	.67	.65	.71
Social	6	.51	.37	.45	.58	.63	.57
Family	5	.65	.68	.65	.63	.58	.63
Esteem	5	.76	.70	.75	.70	.76	.72
	<u>49</u>						

---

Note: V = Valence, I<sub>c</sub> = Instrumentality of Chairman's Job,  
I<sub>p</sub> = Instrumentality of Professor's Job

Table 5  
Correlations of Subscale Valences and Criteria

Subscale Valence	Professors (N = 268)			Chairmen (n = 45)	
	Present Satisfaction as Professor	Anticipated Satisfaction as Chairman	Intention to Choose Job of Chairman	Past Satisfaction as Professor	Present Satisfaction as Chairman
Power	.20***	.45****	.39***	.16	.44***
Achievement	.22****	.28****	.17***	.27	.25
Security	.06	.02	.02	.13	.03
Autonomy	.12*	-.12*	-.14*	-.04	-.08
Social	-.12*	-.14*	-.03	.03	-.08
Family	.06	.07	.11	.21	-.04
Esteem	.08	.11	.04	.28	.15

\* p < .05

\*\* p < .01

\*\*\* p < .001

Table 6  
Means and Standard Deviations of Instrumentality of  
Each Job for Outcomes by Subscale  
Ratings of Professor's Job

Subscale	Professors		Chairmen		Differences	
	$\bar{X}_1$	$S_1$	$\bar{X}_2$	$S_2$	$\bar{X}_1 - \bar{X}_2$	$\bar{X}_1 - \bar{X}_3$
Power	1.88	.56	1.69	.53	+.28	-1.05 <sup>****</sup>
Achievement	2.61	.47	2.63	.38	-.02	+.31 <sup>****</sup>
Security	2.16	.52	2.38	.36	-.22 <sup>**</sup>	+.10 <sup>*</sup>
Autonomy	2.40	.54	2.48	.39	-.08	+1.26 <sup>****</sup>
Social	2.28	.54	2.38	.38	-.10	+.37 <sup>****</sup>
Family	2.25	.60	2.22	.64	+.03	-.12 <sup>*</sup>
Esteem	2.17	.57	2.29	.52	-.12	-.36 <sup>****</sup>

## Ratings of Chairman's Job

Subscale	Professors		Chairmen		Differences	
	$\bar{X}_3$	$S_3$	$\bar{X}_4$	$S_4$	$\bar{X}_3 - \bar{X}_4$	$\bar{X}_2 - \bar{X}_4$
Power	2.93	.45	2.55	.47	+.38 <sup>****</sup>	-.95 <sup>****</sup>
Achievement	2.30	.50	2.50	.41	-.20 <sup>**</sup>	+.13
Security	2.06	.44	2.05	.39	+.01	+.33 <sup>****</sup>
Autonomy	1.14	.49	1.86	.39	-.72 <sup>****</sup>	+.62 <sup>****</sup>
Social	1.91	.50	2.50	.36	-.59 <sup>****</sup>	-.12
Family	2.37	.57	2.13	.67	+.24 <sup>**</sup>	+.09
Esteem	2.53	.56	2.33	.43	+.20 <sup>*</sup>	-.04

Note: N = 268 Professors, 45 Chairmen

\* p < .05

\*\* p < .01

\*\*\* p < .001

Table 6 are best revealed, then, by Figures 2 through 8.

As shown in Table 3, both professors and chairmen were most characterized by desires for achievement, but this subscale did not differentiate the two groups. The most meaningful difference in valence or outcome desirability by subscale for the two samples was the greater preference for power by the chairmen, in spite of the fact that this subscale had the next to lowest valence rating by chairmen overall. It should be noted that the power subscale included administrative power, since it contained items such as "Planning, budgeting, forecasting", and "Policy making."

Table 5 shows that the only subscale valence positively correlated with present job satisfaction for chairmen was that for power ( $r = .44$ ,  $p < .01$ ), indicating that those chairmen who most valued power were the most satisfied with their jobs. Among professors, the valence of power was significantly correlated with anticipated satisfaction as a chairman ( $r = .45$ ,  $p < .001$ ), behavioral intention to accept the job of chairman ( $r = .39$ ,  $p < .001$ ), and present satisfaction with the job of professor ( $r = .20$ ,  $p < .01$ ). The latter finding, significantly positive though lower in magnitude than the correlations relating to the chairman's job, probably reflects the fact that the job of professors is not without its aspects of power also, given their position relative to students.

The administrative job was seen as providing the greatest power, however, as shown in Table 6 and Figure 2. Average scores on subscale instrumentality indicated that both professors and

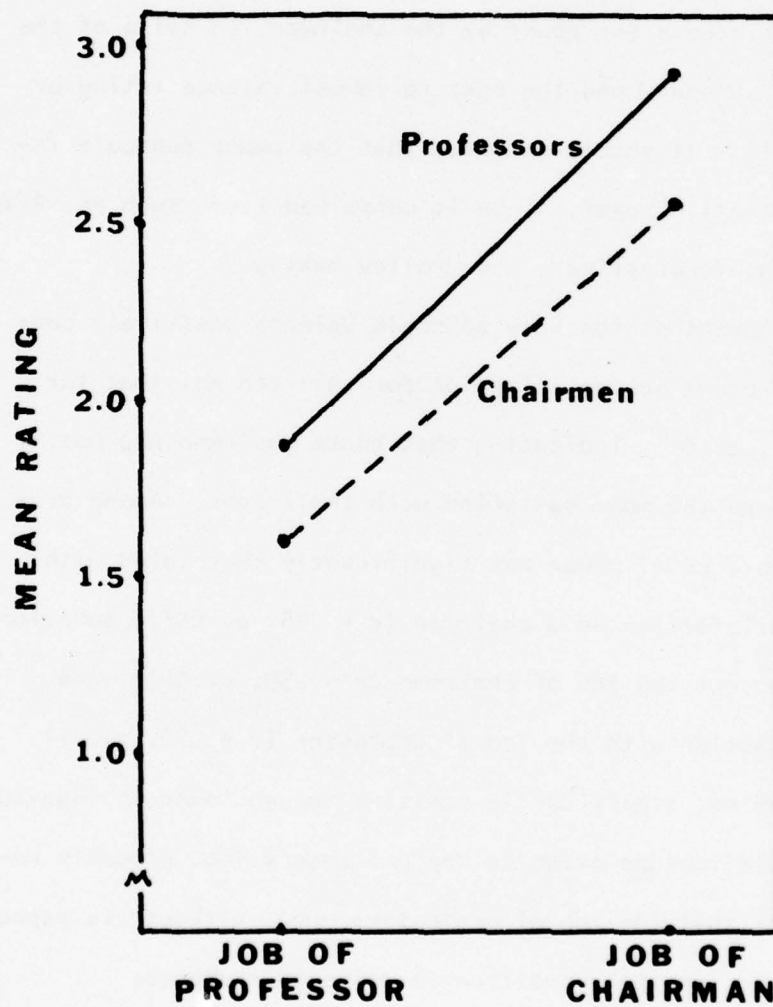


Fig. 2. Mean ratings of instrumentality of each job for power.

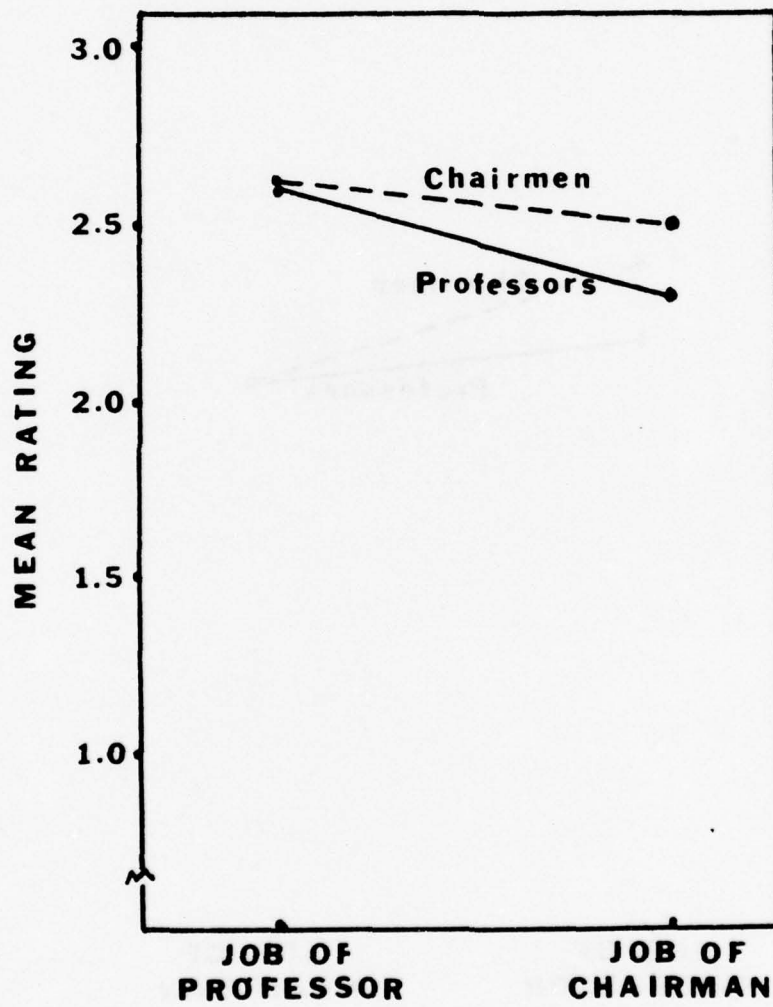


Fig. 3. Mean ratings of instrumentality of each job for achievement.

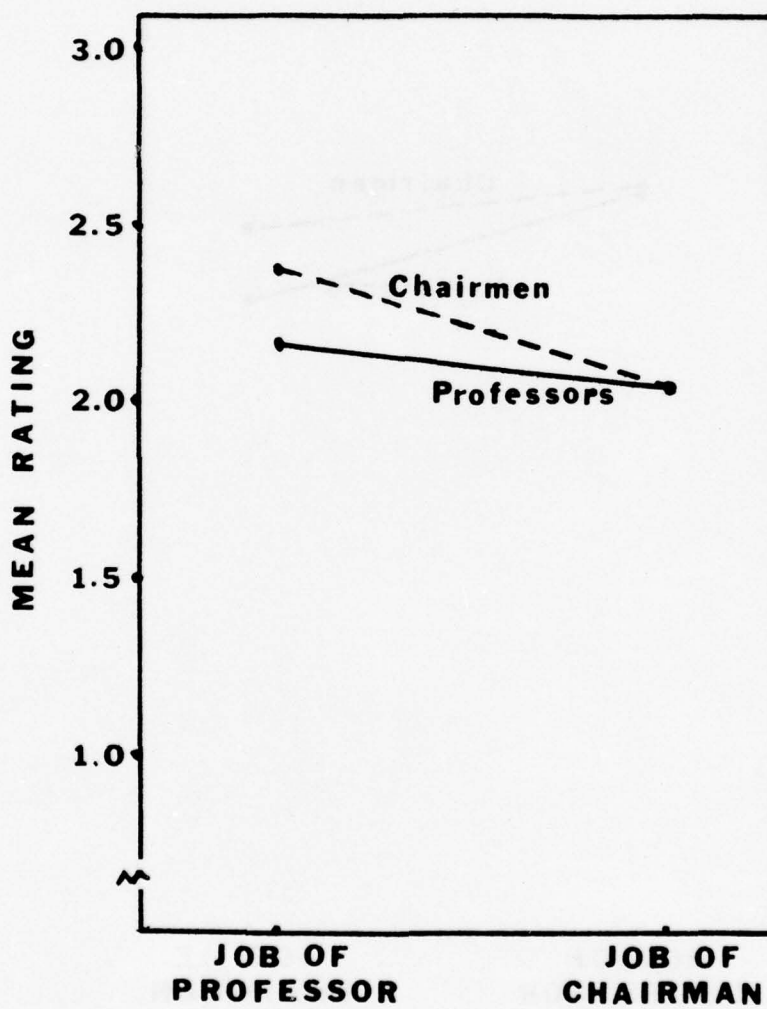


Fig. 4. Mean ratings of instrumentality of each job for security.

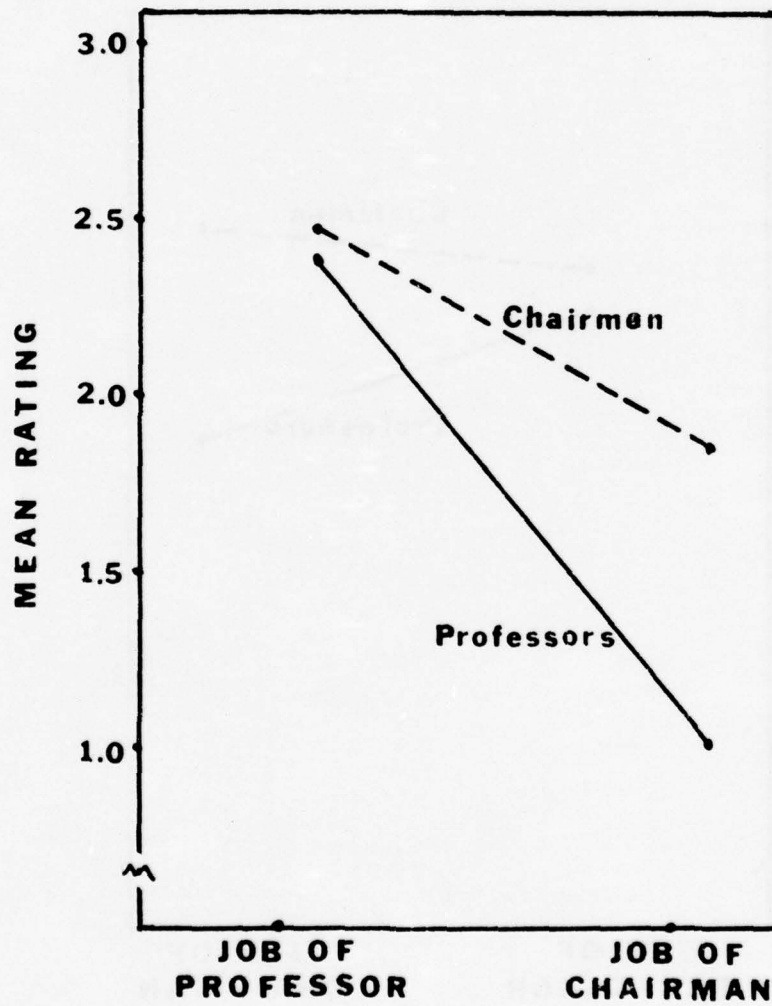


Fig. 5. Mean ratings of instrumentality of each job for autonomy.

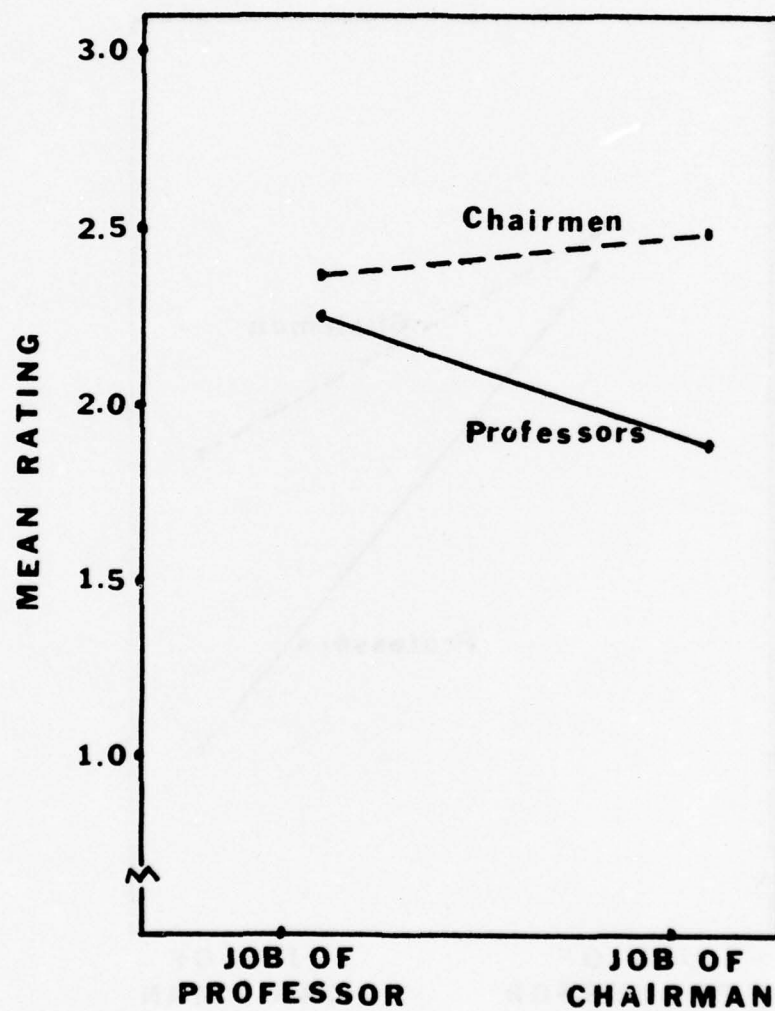


Fig. 6. Mean ratings of instrumentality of each job for social factors.

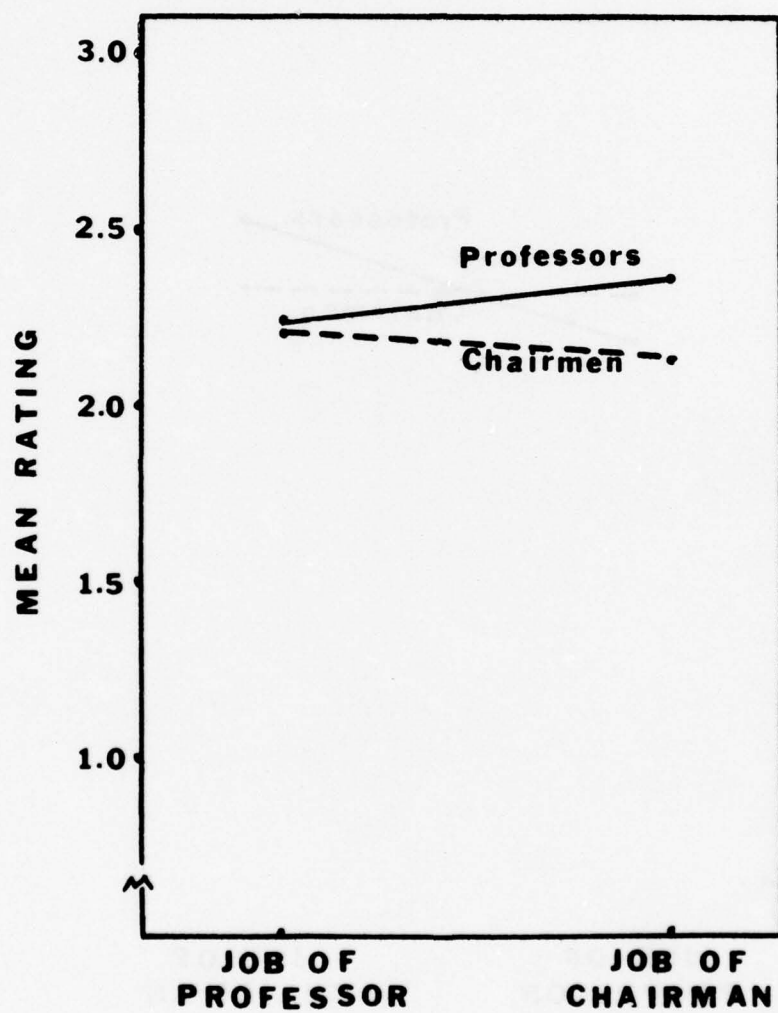


Fig. 7. Mean ratings of instrumentality of each job for family considerations.

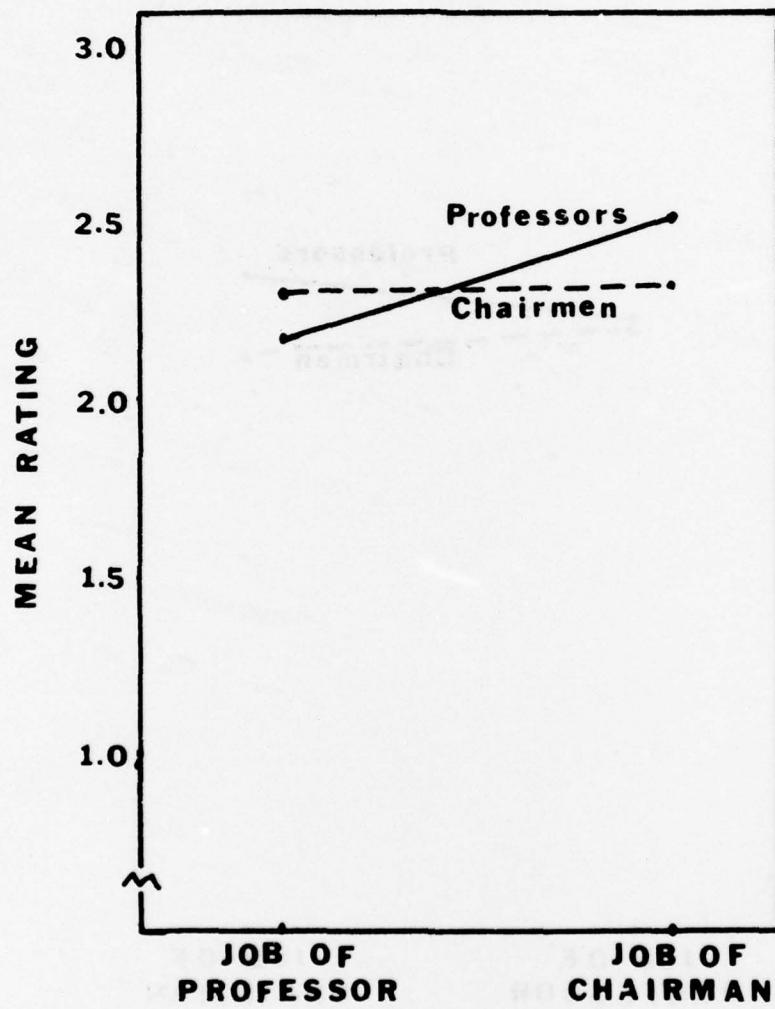


Fig. 8. Mean ratings of instrumentality of each job for esteem.

chairmen saw the job of chairman as leading to significantly greater power than the job of professor ( $p < .001$  in both cases). When all the data are taken together, it appears that power is likely to be a meaningful consideration in the decision to become a department chairman.

The next most meaningful finding in Table 3 was that professors indicated that they valued autonomy more than did chairmen ( $t = 2.80$ ,  $p < .01$ ). The instrumentality mean scores for both professors and chairmen also indicated that the job of professor was more likely to lead to autonomy than was the job of chairman, but the professors saw this tendency more strongly than did the chairmen (see Table 6 and Figure 5). The correlational results for professors (Table 5) supported these findings in that the valence of autonomy was negatively correlated with intention to accept the chairman's job ( $r = -.14$ ,  $p < .05$ ), negatively correlated with anticipated satisfaction on the job of chairman ( $r = -.12$ ,  $p < .05$ ), and positively correlated with present job satisfaction as professor ( $r = .12$ ,  $p < .05$ ).

Table 3 also shows that professors considered security more desirable than did chairmen on the average, although it was valued highly by both groups. Again, instrumentality mean scores for both samples indicated that the job of professor was more likely to lead to security than was the job of chairman, but here the chairmen made a greater distinction than did the professors (see Table 6 and Figure 4). The correlational results in Table 5 did not suggest that those who valued security more highly were more likely to

prefer the job of professor over chairman, however.

The findings for the security subscale are not strong, then, and the results for the remaining four subscales do not clearly differentiate preferences for the two jobs. In summary, the most meaningful findings from the subscale analyses were that power is an important factor in the preference for a chairman's job, while autonomy is an important factor in the preference for the professor's job.

#### Discussion

Although the results of this study supported the use of the VIE framework for exploring occupational preferences, satisfactions and choices, the various VIE components did not behave in the specific manner prescribed by the theory. This was previously shown in the study by Lawler et al. (1975), who found that the (V x I) index was a better predictor of jobs applied for than the total VIE model. Similar findings of inappropriate VIE components predicting criteria the same or better than the appropriate models have often been reported for studies of production or task behavior, where the theory is most frequently applied (Campbell & Pritchard, 1976).

An interesting finding here related to intention to choose the chairman's job was that expectancy of success on the job was a stronger predictor, both alone and in the total VIE model, than expectancy of attainment of the job, the term specified by the theory. Defining expectancy in terms of success is not inconsistent

with the logic of the theory, since this also represents a reality factor that could come between occupational preference and occupational choice. Expectancy of success may prove to be a better predictor of job choice in future studies than expectancy of attainment and appears to be worth exploring further.

Another interpretation, however, is that expectancy of success might be considered an instrumentality term rather than an expectancy term. That is, it could be conceptualized as the subjective probability that a given job will lead to the global outcome called success. In this case, its failure to increase the prediction of intention to change jobs over the prediction by the  $(V \times I)$  index is less surprising.

The failure of the specified expectancy term, that of attainment, to increase the prediction of intention to choose the chairman's job over the prediction by the  $(V \times I)$  index may be the result of a flaw in the wording of the criterion. Behavioral intention was measured by asking if a chairmanship would be accepted if it were offered. Technically, the criterion assumes that expectancy of attainment is 100%, and the E term becomes redundant in the model.

The analysis of the findings here by subscale added a dimension that has too long been ignored in research with VIE theory on occupational preference and choice. Although some researchers have tried to categorize outcomes as intrinsic vs. extrinsic (Mitchell & Albright, 1972; Mitchell & Knudsen, 1973), results have been

mixed. Analyzing outcomes further by subscales or needs might increase our understanding of the evaluative components of the processes underlying career decisions and help bridge the gap between VIE studies of occupational choice and the trait theories of vocational psychology.

The perceptions of the two jobs by the two samples diverge from several other findings of perceptions of occupations before, immediately after, and considerably after attainment of the job. Schneider (1976) reported what he called the "greener grass" phenomenon among his subjects--those who saw a civilian job as more attractive than their present careers in the Navy outnumbered those who saw the Navy as more attractive by about 3 to 1. In this study, the opposite was the case. Those professors who said they would leave the job of professor for the job of department chairman were outnumbered by those who would not leave by about 4 to 1. As with the other Schneider findings that were at variance with those here, type of sample may be largely responsible. Professors as a group were not very interested in changing to an administrative role. Perhaps this disinterest demonstrates that our initial assumption was correct--a highly trained professional contemplating movement into the management hierarchy is not necessarily considering a promotion or progress but a mid-career change.

After choosing a new career, individuals' evaluations of their new occupations or organizations have been shown to improve, while the attractiveness of competitors goes down, presumably to reduce

cognitive dissonance (Festinger, 1957) created by the choice. Vroom (1966) found such a change among 37 master's students, but later discovered that organizational attractiveness decreased significantly after 1 year of employment and stayed down 3 1/2 years after employment (Vroom & Deci, 1971). Others have also found organizational attractiveness high at first but declining later. Lawler et al. (1975) found that a (V x I) index for the attractiveness of firms rated by accounting students decreased from pre-application to post-job choice ( $p < .01$ ) and significantly more one year later ( $p < .01$ ). Bray, Campbell, and Grant (1974) found that new college recruits had unrealistically positive expectations about their careers and their organizations, and these expectations declined rather steadily over seven years of experience. Wanous (1976) also suggested that the declining attractiveness of organizations may be due to initial unrealistic expectations and cited six experiments showing that job survival is greater for those who receive a realistic job preview. It is suggested here that the professors in this sample might have had a realistic preview of the job of department chairman, since they have undoubtedly been close to it. This would explain why the attractiveness of the job was no higher for those who would take the job than for the incumbent chairmen.

Although a comparison of the foresight and hindsight of incumbents in two related occupations adds significantly to our understanding of the perceptions of the jobs over time, it is still not clear from such a correlational study whether the VIE perceptions

caused the occupational preferences, the occupational preferences or choices caused the VIE perceptions, or both caused each other. A study, preferably including subscale analyses, administered both before and after an occupational change such as from professor to department chairman, could help unravel the process further. Unfortunately, the anonymous collection of data in the present study precluded such a follow-up.

## References

- Bray, D. W., Campbell, R. J., & Grant, D. L. Formative years in business: A long-term AT&T study of managerial lives. New York: Wiley, 1974.
- Campbell, J. P., & Pritchard, R. D. Motivation theory in industrial and organizational psychology. In, M. D. Dunnette (Ed.), Handbook of industrial and organizational psychology. Chicago: Rand McNally, 1976.
- Englander, M. E. A psychological analysis of vocational choice: Teaching. Journal of Counseling Psychology, 1960, 7, 257-264.
- Festinger, L. A theory of cognitive dissonance. Stanford, Calif.: Stanford University Press, 1957.
- Guilford, J. P., & Fruchter, B. Fundamental statistics in psychology and education (5th ed.). New York: McGraw-Hill, 1973.
- Hall, D. T. Careers in organizations. Pacific Palisades, Calif.: Goodyear Publishing Company, 1976.
- Holmstrom, V. L., & Beach, L. R. Subjective expected utility and career preferences. Organizational Behavior and Human Performance, 1973, 10, 201-207.
- Lawler, E. E., III. Motivation in work organizations. Monterey, Calif.: Brooks/Cole, 1973.
- Lawler, E. E., III, Kuleck, W. J., Jr., Rhode, J. G., & Sorenson, J. E. Job choice and post-decision dissonance. Organizational Behavior and Human Performance, 1975, 13, 133-145.

- Mitchell, T. R. Expectancy models of job satisfaction, occupational preference and effort: A theoretical, methodological and empirical appraisal. Psychological Bulletin, 1974, 81, 1053-1077.
- Mitchell, T. R., & Albright, D. W. Expectancy theory predictions of the satisfaction, effort, performance, and retention of naval aviation officers. Organizational Behavior and Human Performance, 1972, 8, 1-20.
- Mitchell, T. R., & Knudsen, B. W. Instrumentality theory predictions of students' attitudes towards business and their choice of business as an occupation. Academy of Management Journal, 1973, 16, 41-52.
- Muchinsky, P. M., & Fitch, M. K. Subjective expected utility and academic preferences. Organizational Behavior and Human Performance, 1975, 14, 217-226.
- Parnes, H. S., & Nestel, G. Middle-aged job changers. The pre-retirement years: Volume 4 (Manpower Research Monograph No. 15, pp. 79-114). Washington, D.C.: U. S. Government Printing Office, 1975.
- Rosen, M. Valence, expectancy and dissonance reduction in the prediction of goal striving. Paper presented at the meeting of the Eastern Psychological Association, Philadelphia, Pa., 1961.

- Schneider, J. The "greener grass" phenomenon: Differential effects of a work context alternative on organizational participation and withdrawal intentions. Organizational Behavior and Human Performance, 1976, 16, 308-333.
- Sheard, J. L. Intrasubject prediction of preferences for organizational types. Journal of Applied Psychology, 1970, 54, 248-252.
- Sheridan, J. E., Richards, M. D., & Slocum, J. W., Jr. Comparative analysis of expectancy and heuristic models of decision-making. Journal of Applied Psychology, 1975, 60, 361-368.
- Vroom, V. H. Work and motivation. New York: Wiley, 1964.
- Vroom, V. H. Organizational choice: A study of pre- and post-decision processes. Organizational Behavior and Human Performance, 1966, 1, 212-225.
- Vroom, V. H., & Deci, E. L. The stability of post-decision dissonance: A follow-up study of the job attitudes of business school graduates. Organizational Behavior and Human Performance, 1971, 6, 36-49.
- Warous, J. P. Occupational preferences: Perceptions of valence and instrumentality and objective data. Journal of Applied Psychology, 1972, 56, 152-155.
- Warous, J. P. Organizational entry: From naive expectations to realistic beliefs. Journal of Applied Psychology, 1976, 16, 22-29.

Distribution List

Navy

- 4 Dr. Marshall J. Farr, Director  
Personnel and Training Research  
Programs  
Office of Naval Research (Code 458)  
Arlington, VA 22217
- 1 ONR Branch Office  
495 Summer Street  
Boston, MA 02210  
ATTN: Dr. James Lester
- 1 ONR Branch Office  
1030 East Green Street  
Pasadena, CA 91101  
ATTN: Dr. Eugene Gloye
- 1 ONR Branch Office  
536 South Clark Street  
Chicago, IL 60605  
ATTN: Dr. Charles E. Davis
- 1 Dr. M. A. Bertin, Scientific Director  
Office of Naval Research  
Scientific Liaison Group/Tokyo  
American Embassy  
APO San Francisco 96503
- 1 Office of Naval Research  
Code 200  
Arlington, VA 22217
- 6 Director  
Naval Research Laboratory  
Code 2627  
Washington, DC 20390
- 1 Technical Director  
Navy Personnel Research and  
Development Center  
San Diego, CA 92152
- 1 Special Assistant for Enlisted Force  
Analysis  
Bureau of Naval Personnel (Pers 2x)  
Room 2628, Arlington Annex  
Washington, DC 20370
- 1 Assistant Deputy Chief of Naval  
Personnel for Retention Analysis  
and Coordination (Pers 12)  
Room 2403, Arlington Annex  
Washington, DC 20370
- 1 CDR J. L. Johnson, USN  
Naval Amphibious School  
Little Creek  
Naval Amphibious Base  
Norfolk, VA 23521
- 1 LCDR Charles J. Theisen, Jr., MSC, USN  
4024  
Naval Air Development Center  
Warminster, PA 18974
- 1 Commanding Officer  
U.S. Naval Amphibious School  
Coronado, CA 92155
- 1 CDR Paul D. Nelson, MSC, USN  
Naval Medical R&D Command (Code 44)  
National Naval Medical Center  
Bethesda, MD 20014
- 1 Commanding Officer  
Naval Health Research Center  
San Diego, CA 92152  
ATTN: Library
- 1 Chairman  
Behavioral Science Department  
Naval Command & Management Division  
U.S. Naval Academy  
Annapolis, MD 21402
- 1 Chief of Naval Education & Training  
Naval Air Station  
Pensacola, FL 32508  
ATTN: CAPT Bruce Stone, USN
- 1 Mr. Arnold I. Rubinstein  
Human Resources Program Manager  
Naval Material Command (0344)  
Room 1044, Crystal Plaza #5  
Washington, DC 20360
- 1 Dr. Jack R. Borsting  
U.S. Naval Postgraduate School  
Department of Operations Research  
Monterey, CA 93940
- 1 Mr. Maurice Callahan  
NODAC (Code 2)  
Department of the Navy  
Bldg. 2, Washington Navy Yard  
(Anacostia)  
Washington, DC 20374
- 1 Office of Civilian Manpower Management  
Code 64  
Washington, DC 20390  
ATTN: Dr. Richard J. Niehaus
- 1 Office of Civilian Manpower Management  
Code 263  
Washington, DC 20390
- 1 Chief of Naval Reserve  
Code 3055  
New Orleans, LA 70146
- 1 Assistant to the Assistant Deputy Chief  
of Naval Operations (Manpower)  
Head, NAMPS Project Office  
Room 1606, Arlington Annex  
Washington, DC 20370  
ATTN: Dr. Harry M. West
- 1 Superintendent  
Naval Postgraduate School  
Monterey, CA 93940  
ATTN: Library (Code 2124)
- 1 Mr. George N. Graine  
Naval Sea Systems Command  
SEA 047C12  
Washington, DC 20362
- 1 Chief of Naval Technical Training  
Naval Air Station Memphis (75)  
Millington, TN 38054  
ATTN: Dr. Norman J. Kerr
- 1 Principal Civilian Advisor  
for Education and Training  
Naval Training Command, Code 00A  
Pensacola, FL 32508  
ATTN: Dr. William L. Maloy
- 1 Director  
Training Analysis & Evaluation  
Group  
Code N-00t  
Department of the Navy  
Orlando, FL 32813  
ATTN: Dr. Alfred F. Smode
- 1 Chief of Naval Education  
and Training Support (01A)  
Pensacola, FL 32509
- 1 LCDR C. F. Logan, USN  
F-14 Management System  
COMFITAEWINGPAC  
NAS Miramar, CA 92145
- 1 Navy Personnel Research and  
Development Center  
Code 01  
San Diego, CA 92152
- 5 Navy Personnel Research and  
Development Center  
Code 02  
San Diego, CA 92152  
ATTN: A. A. Sjöholm
- 2 Navy Personnel Research and  
Development Center  
Code 310  
San Diego, CA 92152  
ATTN: Dr. Martin F. Wiskoff
- 1 Dr. Robert Morrison  
Navy Personnel Research and  
Development Center, Code 301  
San Diego, CA 92152
- 1 Navy Personnel Research and  
Development Center  
San Diego, CA 92152  
ATTN: Library
- 1 D. M. Gragg, CAPT, MC, USN  
Head, Educational Programs  
Development Department  
Naval Health Sciences Education  
and Training Command  
Bethesda, MD 20014
- 1 Mr. Victor H. Brown, Director  
Career Training Analysis Group  
Chief of Naval Education and  
Training  
(Code N54)  
Naval Air Station  
Pensacola, FL 32507

Army

- 1 Technical Director  
U.S. Army Research Institute for the Behavioral and Social Sciences  
1300 Wilson Boulevard  
Arlington, VA 22209
- 1 Headquarters  
U.S. Army Administration Center  
Personnel Administration Combat Development Activity  
ATCP-HRQ  
Ft. Benjamin Harrison, IN 46249
- 1 Armed Forces Staff College  
Norfolk, VA 23511  
ATTN: Library
- 1 Commandant  
U.S. Army Infantry School  
Fort Benning, GA 31905  
ATTN: ATSH-DET
- 1 Deputy Commander  
U.S. Army Institute of Administration  
Fort Benjamin Harrison, IN 46216  
ATTN: EA
- 1 Dr. Ralph Dusek  
U.S. Army Research Institute for the Behavioral and Social Sciences  
1300 Wilson Boulevard  
Arlington, VA 22209
- 1 Dr. Joseph Ward  
U.S. Army Research Institute for the Behavioral and Social Sciences  
1300 Wilson Boulevard  
Arlington, VA 22209
- 1 HQ USAREUR & 7th Army  
ODCSOPS  
USAREUR Director of GED  
APO New York 09403
- 1 ARI Field Unit - Leavenworth  
Post Office Box 3122  
Fort Leavenworth, KS 66027
- 1 Dr. Ralph Canter  
U.S. Army Research Institute for the Behavioral and Social Sciences  
1300 Wilson Boulevard  
Arlington, VA 22209
- 1 Dr. Milton S. Katz, Chief  
Individual Training & Performance Evaluation  
U.S. Army Research Institute for the Behavioral and Social Sciences  
1300 Wilson Boulevard  
Arlington, VA 22209

Air Force

- 1 Research Branch  
AF/DPMYAR  
Randolph AFB, TX 78148
- 1 Dr. G. A. Eckstrand (AFHRL/AST)  
Wright-Patterson AFB  
Ohio 45433

- 1 AFHRL/DOJN  
Stop #63  
Lackland AFB, TX 78236
- 1 Dr. Martin Rockway (AFHRL/TT)  
Lowry AFB  
Colorado 80230
- 1 Instructional Technology Branch  
AF Human Resources Laboratory  
Lowry AFB, CO 80230
- 1 Dr. Alfred R. Fregly  
AFOSR/NL  
1400 Wilson Boulevard  
Arlington, VA 22209
- 1 AFHRL/PED  
Stop #63  
Lackland AFB, TX 78236
- 1 Major Wayne S. Sellman  
Chief of Personnel Testing  
HQ USAF/DPMYP  
Randolph AFB, TX 78148
- 1 Air University Library  
AUL/LSE 76-443  
Maxwell AFB, AL 36112

Marine Corps

- 1 Director, Office of Manpower Utilization  
Headquarters, Marine Corps (Code MPU)  
MCB (Building 2009)  
Quantico, VA 22134
- 1 Dr. A. L. Slafkosky  
Scientific Advisor (Code RD-1)  
Headquarters, U.S. Marine Corps  
Washington, DC 20380
- 1 Chief, Academic Department  
Education Center  
Marine Corps Development and Education Command  
Marine Corps Base  
Quantico, VA 22134
- 1 Mr. E. A. Dover  
2711 South Veitch Street  
Arlington, VA 22206

Coast Guard

- 1 Mr. Joseph J. Cowan, Chief  
Psychological Research Branch (G-P-1/62)  
U.S. Coast Guard Headquarters  
Washington, DC 20590

Other DOD

- 1 Dr. Robert Young  
Advanced Research Projects Agency  
Cybernetics Technology, Room 625  
1400 Wilson Boulevard  
Arlington, VA 22209

- 1 Mr. Frederick W. Suffa  
Chief, Recruiting and Retention Evaluation  
Office of the Assistant Secretary of Defense, M&RA  
Room 3D970, Pentagon  
Washington, DC 20301
- 12 Defense Documentation Center  
Cameron Station, Building 5  
Alexandria, VA 22314  
ATTN: TC
- 1 Military Assistant for Human Resources  
Office of the Director of Defense Research and Engineering  
Room 3D129, The Pentagon  
Washington, DC 20301
- 1 Director, Management Information Systems Office  
OSD (M&RA)  
38917, The Pentagon  
Washington, DC 20301

Other Government

- 1 Dr. Lorraine D. Eyd  
Personnel Research and Development Center  
U.S. Civil Service Commission  
1900 E Street, N.W.  
Washington, DC 20415
- 1 Dr. William Gorham, Director  
Personnel Research and Development Center  
U.S. Civil Service Commission  
1900 E Street, N.W.  
Washington, DC 20415
- 1 Dr. Vern Urry  
Personnel Research and Development Center  
U.S. Civil Service Commission  
1900 E Street, N.W.  
Washington, DC 20415
- 1 U.S. Civil Service Commission  
Federal Office Building  
Chicago Regional Staff Division  
Regional Psychologist  
230 South Dearborn Street  
Chicago, IL 60604  
ATTN: C. S. Winiewicz
- 1 Dr. Carl Frederiksen  
Learning Division, Basic Skills Group  
National Institute of Education  
1200 19th Street, N.W.  
Washington, DC 20208

- 1 Dr. Joseph L. Young  
National Science Foundation  
1800 G Street, N.W.  
Washington, DC 20550

Miscellaneous

- 1 Dr. Gerald V. Barrett  
University of Akron  
Department of Psychology  
Akron, OH 44325
- 1 Dr. Bernard M. Bass  
University of Rochester  
Graduate School of Management  
Rochester, NY 14627
- 1 Century Research Corporation  
4113 Lee Highway  
Arlington, VA 22207
- 1 Dr. A. Charnes  
BEB 512  
University of Texas  
Austin, TX 78712
- 1 Dr. Kenneth E. Clark  
University of Rochester  
College of Arts and Sciences  
River Campus Station  
Rochester, NY 14627
- 1 Dr. Norman Cliff  
University of Southern California  
Department of Psychology  
University Park  
Los Angeles, CA 90007
- 1 Dean W. W. Cooper  
Carnegie-Mellon University  
School of Urban and Public Affairs  
Pittsburgh, PA 15213
- 1 Dr. Joseph E. Champoux  
School of Business & Administration  
The University of New Mexico  
Albuquerque, NM 87131
- 1 Dr. Rene' V. Dawis  
University of Minnesota  
Department of Psychology  
Minneapolis, MN 55455
- 1 Dr. Norman R. Dixon  
200 South Craig Street  
University of Pittsburgh  
Pittsburgh, PA 15260
- 1 Dr. Robert Dubin  
University of California  
Graduate School of Administration  
Irvine, CA 92664
- 1 Dr. Marvin D. Dunnette  
University of Minnesota  
Department of Psychology  
Minneapolis, MN 55455
- 1 ERIC  
Processing and Reference Facility  
4833 Rugby Avenue  
Bethesda, MD 20014
- 1 Dr. Barry M. Feinberg  
Bureau of Social Science Research, Inc.  
1990 M Street, N.W.  
Washington, DC 20036
- 1 Dr. Victor Fields  
Montgomery College  
Department of Psychology  
Rockville, MD 20850
- 1 Dr. Edwin A. Fleishman  
Advanced Research Resources  
Organization  
#603  
8555 Sixteenth Street  
Silver Spring, MD 20910
- 1 Dr. Robert Glaser, Co-Director  
University of Pittsburgh  
3939 O'Hara Street  
Pittsburgh, PA 15213
- 1 Dr. Richard S. Hatch  
Decision Systems Associates, Inc.  
5640 Nicholson Lane  
Rockville, MD 20852
- 1 Dr. M. D. Havron  
Human Sciences Research, Inc.  
7710 Old Spring House Road  
West Gate Industrial Park  
McLean, VA 22101
- 1 HumRRO Central Division  
400 Plaza Building  
Pace Boulevard at Fairfield Drive  
Pensacola, FL 32505
- 1 HumRRO/Western Division  
27857 Berwick Drive  
Carmel, CA 93921  
ATTN: Library
- 1 HumRRO/Western Division  
27857 Berwick Drive  
Carmel, CA 93921  
ATTN: Dr. Robert Vineberg
- 1 Dr. Lawrence B. Johnson  
Lawrence Johnson & Associates, Inc.  
2001 S Street, N.W., Suite 502  
Washington, DC 20009
- 1 Dr. Sigmund Tobias  
Ph.D. Programs in Education  
Graduate Center  
City University of New York  
33 West 42nd Street  
New York, NY 10036
- 1 Mr. W. E. Lassiter  
Data Solutions Corporation  
6849 Old Dominion Drive, Suite 211  
McLean, VA 22101
- 1 Dr. Frederick M. Lord  
Educational Testing Service  
Princeton NJ 08540
- 1 Dr. Ernest J. McCormick  
Purdue University  
Department of Psychological Sciences  
Lafayette, IN 47907
- 1 Dr. Robert R. Mackie  
Human Factors Research, Inc.  
6780 Corton Drive  
Santa Barbara Research Park  
Goleta, CA 93017
- 1 Mr. Edmond Marks  
315 Old Main  
Pennsylvania State University  
University Park, PA 16802
- 1 Dr. Leo Munday, Vice President  
American College Testing Program  
P.O. Box 168  
Iowa City, IA 52240
- 1 Mr. Luigi Petrullo  
2431 North Edgewood Street  
Arlington, VA 22207
- 1 Dr. Steven M. Pine  
University of Minnesota  
Department of Psychology  
Minneapolis, MN 55455
- 1 Dr. Lyman W. Porter, Dean  
University of California  
Graduate School of Administration  
Irvine, CA 92650
- 1 Dr. Diane M. Ramsey-Klee  
R-K Research & System Design  
3947 Ridgemont Drive  
Malibu, CA 90265
- 1 Dr. Joseph W. Rigney  
University of Southern California  
Behavioral Technology Laboratories  
3717 South Grand  
Los Angeles, CA 90007
- 1 Dr. Leonard L. Rosenbaum, Chairman  
Montgomery College  
Department of Psychology  
Rockville, MD 20850
- 1 Dr. George E. Rowland  
Rowland and Company, Inc.  
P.O. Box 61  
Haddonfield, NJ 08033
- 1 Dr. Arthur I. Siegel  
Applied Psychological Services  
404 East Lancaster Avenue  
Wayne, PA 19087
- 1 Dr. Henry P. Sims, Jr.  
Room 630-Business  
Indiana University  
Bloomington, IN 47401
- 1 Dr. C. Harold Stone  
1428 Virginia Avenue  
Glendale, CA 91202
- 1 Mr. Dennis J. Sullivan  
c/o HAISC, Building 119, M.S. 2  
P.O. Box 90515  
Los Angeles, CA 90009

- 1 Dr. John R. Frederiksen  
Bolt, Beranek & Newman, Inc.  
50 Moulton Street  
Cambridge, MA 02133
  
- 1 Dr. David J. Weiss  
University of Minnesota  
Department of Psychology  
N660 Elliott Hall  
Minneapolis, MN 55455
  
- 1 Mr. George Wheaton  
American Institutes for Research  
3301 New Mexico Avenue, N.W.  
Washington, DC 20016
  
- 1 Dr. K. Wescourt  
Stanford University  
Institute for Mathematical Studies  
in the Social Sciences  
Stanford, CA 94305
  
- 1 Richard T. Mowday  
College of Business Administration  
University of Nebraska, Lincoln  
Lincoln, NE 68588
  
- 1 Dr. John J. Collins  
Vice President  
Essex Corporation  
6305 Caminito Estrellado  
San Diego, CA 92120
  
- 1 Dr. Lyle Schoenfeldt  
School of Management  
Rensselaer Polytechnic Institute  
Troy, NY 12181
  
- 1 Dr. Patrick Suppes, Director  
Institute for Mathematical Studies  
in the Social Sciences  
Stanford University  
Stanford, CA 94305
  
- 1 Dr. Andrew M. Rose  
American Institutes for Research  
3301 New Mexico Avenue, N.W.  
Washington, DC 20016
  
- 1 Major I. N. Evonic  
Canadian Forces Personnel  
Applied Research Unit  
1107 Avenue Road  
Toronto, Ontario, Canada