

AD-A037 333

DEFENCE AND CIVIL INST OF ENVIRONMENTAL MEDICINE DOW--ETC F/G 17/1  
DETECTION OF TARGETS IN THREE SIMULATED SONAR PRESENTATION MODE--ETC(U)  
DEC 76 S M MCFADDEN, W R GARLAND, L OLSEN

UNCLASSIFIED

DCIEM-TR-76-X-70

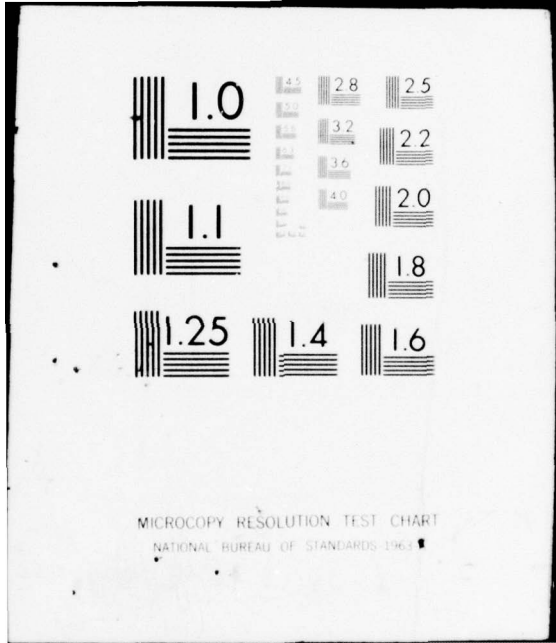
NL

1 OF 1  
AD  
A037333



END

DATE  
FILMED  
4-77



B.S. 3

DCIEM Technical Report No. 76-X-70

ADA 037333

DDC  
MAR 24 1977  
C 4

DETECTION OF TARGETS IN THREE SIMULATED  
SONAR PRESENTATION MODES

S.M. McFadden

W.R. Garland

L. Olsen

DISTRIBUTION STATEMENT A  
Approved for public release;  
Distribution Unlimited

DEFENCE AND CIVIL INSTITUTE OF ENVIRONMENTAL MEDICINE  
INSTITUT MILITAIRE ET CIVIL DE MEDECINE DE L'ENVIRONNEMENT

DEPARTMENT OF NATIONAL DEFENCE — CANADA

ADJ NO.  
DDC FILE COPY

11 DECEMBER 1976

9 DCIEM Technical Report, No. 76-X-70

12 22 p.

14 DCIEM-TR-76-X-70

DDC  
MAR 24 1977  
C

6 DETECTION OF TARGETS IN THREE SIMULATED SONAR PRESENTATION MODES.

DISTRIBUTION STATEMENT A  
Approved for public release;  
Distribution Unlimited

10  
S.M. McFadden,  
W.R. Garland  
L. Olsen

Behavioural Sciences Division  
Defence and Civil Institute of Environmental Medicine  
1133 Sheppard Avenue West, P.O. Box 2000  
Downsview, Ontario M3M 3B9

DEPARTMENT OF NATIONAL DEFENCE - CANADA

406 986

LB

### ABSTRACT

Target detection performance was compared across three simulated sonar presentation modes: single channel binaural, four channel binaural, and eight channel dichotic detection. The multi-channel tasks simulated the "search" modes of the AQS-13 and AQS-13B sonars respectively. The results showed a 3.4 dB decrement in performance for the four channel task and a 4.1 dB decrement in performance for the eight channel task compared to the single channel task. Almost half the decrement in performance was due simply to the presence of the additional bands of noise, the other half to the requirement that more than one channel be monitored at a time. One possible way to improve target acquisition would be to present the channels successively on successive pings.

White Section	<input checked="" type="checkbox"/>
Buff Section	<input type="checkbox"/>
UNANNOUNCED NOTIFICATION	<input type="checkbox"/>
BY _____	
DISTRIBUTION/AVAILABILITY CODES	
Dist.	AVAIL. and/or SPECIAL
A	

## INTRODUCTION

Background of the problem - Operational Sea King Sonar systems AQS-13 and AQS-13B provide the operator with information from eight sectors of the ocean. The return from each sector is treated separately and presented as a single channel of information. These channels must then be combined in some way for presentation to the observer. If the returns from the different ocean sectors were combined and presented together at a single display frequency the reverberations would combine to decrease the detectability of a target in any one sector. Combining two channels would reduce the detectability of a target on either by 3 dB. Combining eight channels would produce a theoretical decrement of 9 dB. Accordingly, in operational systems, the channels are separated. Returns from the different ocean sectors are presented at different display frequencies, and in some cases separately to the two ears. The usefulness of this mode of presentation depends on the operator's ability to monitor simultaneously several separate channels.

Prior studies - The human's ability to monitor several sources of information simultaneously has been extensively examined. Relevant studies have been carried out by Morton and Copeman (1968), and by Klumpp and Leonard (1972). Both studies measured the detectability of an auditory signal which might occur on any of several channels on a given trial. Morton and Copeman (1968) measured detectability of a signal in four different tasks - single channel binaural, two channel binaural, two channel dichotic; and four channel dichotic. Comparing the single channel binaural with the remaining three conditions, they found decrements of 1.29, 2.27 and 2.99 dB respectively. Klumpp and Leonard (1972) found decrements of only .9 and 1.1 dB on comparing performance in a single channel task with that on a four channel binaural and eight channel dichotic task. Both studies have a number of limitations. Morton and Copeman (1968) did not simulate the four channel binaural and eight channel dichotic tasks used in current sonar systems. Klumpp and Leonard (1972) only measured single channel performance at 1000 hz. Thus their results only hold true for the one frequency. Furthermore, their masker consisted of a pair of two-second samples of reverberation, with the same two samples being used on every trial. This differs from the constantly fluctuating reverberation pattern in an operational situation.

Current study - The current study compared performance on a single channel binaural, a four channel binaural and an eight channel dichotic task. The two multi-channel tasks simulated the search modes of the AQS-13 and AQS-13B systems. In AQS-13 search mode,

returns from four sectors are presented binaurally at four display frequencies. The remaining four sectors are presented on the next ping. In the AQS-13B returns from four sectors are presented to one ear at four separate frequencies with the remaining sectors being presented simultaneously and independently to the contralateral ear at the same set of frequencies. Target detection performance was measured with the observers listening for targets on each channel separately, both with a single band of noise as masker and with the same maskers as in the multi-channel tasks. These control conditions were compared with performance measures in the two multi-channel tasks, when the target might appear on any channel in any one trial.

### METHOD

Experimental conditions - Detectability of a signal was measured under five experimental conditions. They differed in the number of channels an observer had to monitor and in the masker in which the signal was imbedded. Figure 3 summarizes the five conditions in terms of number of different signals presented and number of noise bands used. A channel was defined as a narrow band of noise (50 hz wide) within which a sinusoidal signal might be presented at the centre frequency of the noise. In all conditions the observer's task was to indicate in which of two otherwise equivalent time intervals a signal had occurred.

S1-N1 (one signal, one noise); single frequency binaural signal detection in a single band of noise. This condition corresponded to the tracking mode of the AQS-13. The masker was a single band of noise centred on the frequency of the signal. The signal was a sinusoid of known frequency. Performance was measured at 640, 1000, 1390 and 1740 hz. Both signal and masker were presented binaurally (same presentation to each ear).

S1-N1 (one signal, one noise, monaural); single frequency monaural signal detection. For three observers performance was measured when the signal and masker were presented to only one ear at a time.

S1-N4 (one signal, four noises); binaural single channel signal detection in four bands of noise. The signal was the same as in S1-N1. The masker was composed of four bands of noise each 50 hz wide centred at 640, 1000, 1390 and 1740 hz. Both signal and masker were presented binaurally. Performance was measured with the signal at each of the four masker centre frequencies.

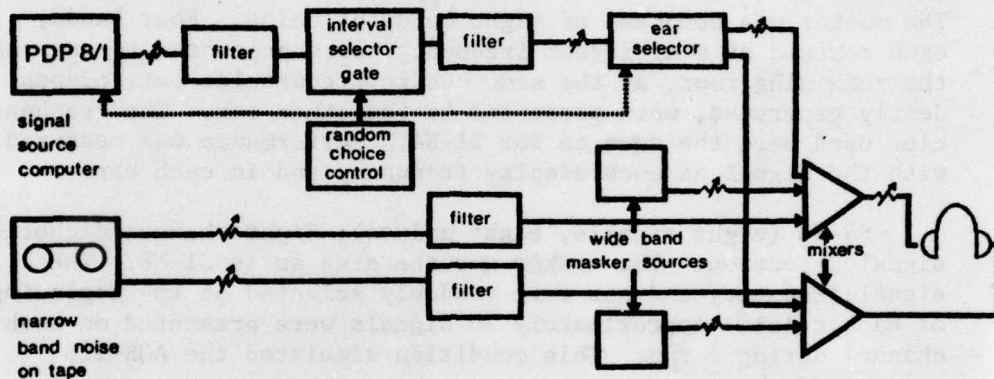
S4-N4 (four signals, four noises); Binaural four channel signal detection. The masker was identical to S1-N4. The signal frequency was randomly selected at the start of each trial to be at the centre frequency of one of the noise bands. This resulted in approximately 20 trials at each signal frequency within a run. S4-N4 corresponded to the search mode of the AQS-13.

S1-N8 (one signal, eight noises); Monaural single channel signal detection in eight bands of noise. The signal here was the same as in S1-N1 and S1-N4 except it was presented monaurally. The masker was composed of eight bands of noise. Four bands, each centred at a different frequency, were presented to one ear; the remaining four, at the same centre frequencies but independently generated, were presented to the other ear. The frequencies used were the same as for S1-N4. Performance was measured with the signal at each display frequency and in each ear.

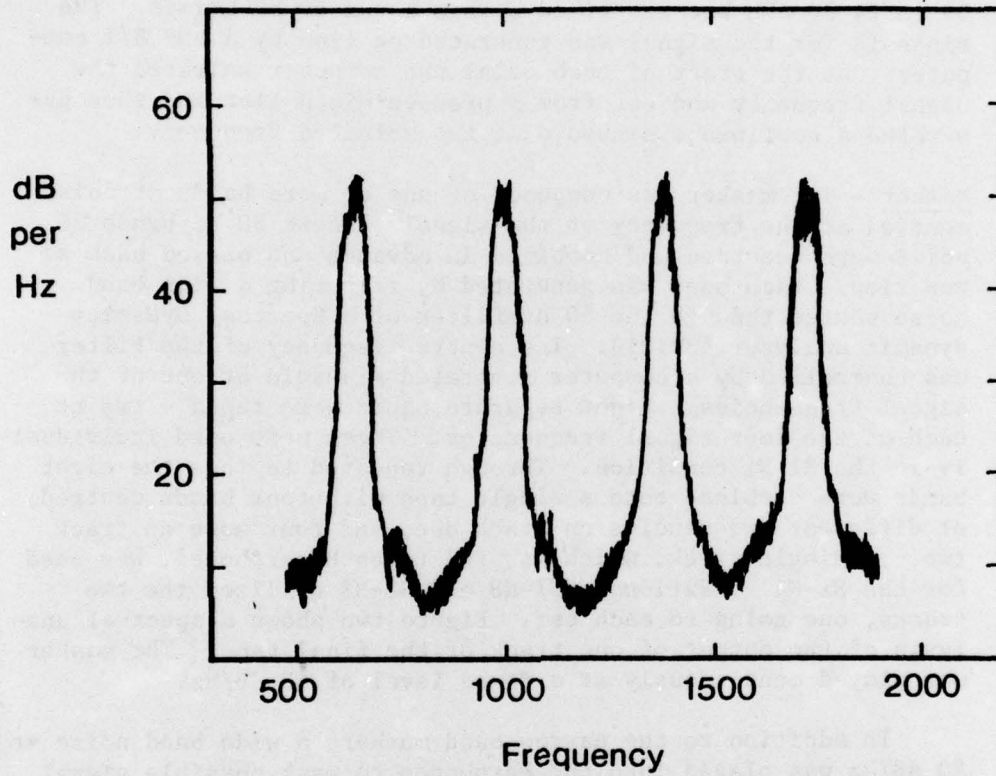
S8-N8 (eight signals, eight noises); Eight channel dichotic signal detection. The masker was the same as in S1-N8. The signal frequency and ear were randomly selected at the beginning of each trial. Approximately 10 signals were presented on each channel during a run. This condition simulated the AQS-13B search mode.

Observers - 5 (4 female, 1 male) observers, all with normal hearing, were used in this study. Each observer was run in every condition.

Apparatus and stimuli - A simplified schematic of the system used to present the stimuli to the observer is shown in Figure 1. The sinusoid being generated was first low pass filtered at 2000 hz to remove unwanted harmonics. Next the gating of the sinusoid and signal interval selection was carried out. A second low pass filter removed transients generated by this process. The signal was then fed into one of two mixers via a switch (ear selection switch) under computer control. Here it was mixed with one of the pre-recorded tracks of narrow band noise and a wide band noise source. The combined stimuli were fed to one earphone while the other earphone received the output of the second track of prerecorded noise and the second wide band noise source. For the binaural condition the ear selection switch was fixed and the output of the mixer containing the signal was fed to both earphones. The levels for each signal and noise path were separately adjustable.



**Figure 1:** A schematic diagram of the stimulus flow control. The PDP 8/I generates the signal and controls ear selection. For the binaural mode the normal input to the right earphone was eliminated and the input to the left earphone fed to both. Ear selection was not carried out in the binaural mode.



**Figure 2:** Spectral analysis of the narrow band noise sources from one track of the tape recording used in this study. The wide band noise was set at 20 dB per hz.

Signal - The signal was a 500 millisecond burst of a sinusoid with 100 millisecond on and off ramps. The frequencies used were 640, 1000, 1390 and 1740 hz (the same as the noise band centre frequencies). Signal intensity ranged between runs from 59 to 74 dB SPL but was fixed within a run of 80 trials. The sinusoid for the signal was generated on line by a PDP 8/I computer. At the start of each trial the computer selected the signal frequency and ear from a predetermined list and then generated a continuous sinusoid at the selected frequency.

Masker - The masker was composed of one or more bands of noise centred at the frequency of the signal. These 50 hz bands of noise were recorded and combined in advance and played back at run time. Each band was generated by filtering a wide band noise source through the 50 hz filter of a Spectral Dynamics dynamic analyser #SD101B. The centre frequency of the filter was controlled by a computer generated sinusoid at one of the signal frequencies. Eight separate bands were taped - two at each of the four signal frequencies. These were used individually in the S1-N1 condition. Through repeated tapings the eight bands were combined onto a single tape with four bands centred at different frequencies on track one, and four more on track two. A single track, which was fed to both earphones, was used for the Sx-N4 conditions. S1-N8 and S8-N8 utilized the two tracks, one going to each ear. Figure two shows a spectral analysis of the output of one track of the final tape. The masker was played continuously at a fixed level of 50 dB/hz.

In addition to the narrow band maskers a wide band noise at 20 dB/hz was played into the earphones to mask possible signal switching transients and apparatus hum.

Responses - An observer was required to indicate in which of two intervals a signal had occurred by pressing the appropriate button. Responses were recorded by the computer and stored on dec-tape. At the end of each run the computer printed out the percent correct on each channel monitored.

Procedure - Observers were run three hours a day five days a week. While carrying out the task an observer was seated in a soundproof booth. Each session in the booth lasted 20 minutes and was composed of three runs of eighty trials each. Two observers ran alternately throughout the three hour period. Within a run all variables were fixed except for the multi-channel conditions, for which the signal frequency and ear were randomly selected at the beginning of each trial. Between runs the signal level was shifted. Each trial consisted of a 0.2 second warning interval, two 0.6 second signal listening intervals

separated by a 0.3 second pause, and a 0.9 second response interval. The five intervals were marked by lights. Feedback was given immediately after a response was made.

#### DATA ANALYSIS

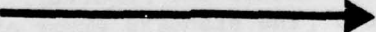
Raw Data - The raw data was in the form of percent correct. The initial step was to determine the average percent correct for each combination of frequency, observer, ear, experimental condition, and signal level. For S1-N1, S1-N4 and S1-N8 these averages were based on one or two runs of 80 trials each. A second run under a given set of conditions was made if the first differed appreciably from the midpoint between its neighbours. The S1-N1 and S1-N1m conditions (binaural and monaural data from S1-N1) were found to show no differences, and were averaged together. Each value for S4-N4 and S8-N8 was based on 160 to 200 trials collected over several runs. It is impossible to be more precise since the number of trials on each channel varied from run to run.


d' values - For each of the above averages the equivalent d' value was calculated. d' usually increases logarithmically with signal energy measured in dB in a detection task. A straight line was fit to each plot of log d' versus signal level in dB at each combination of conditions, using the method of least squares. The coefficients of determination of these regressions ranged from .69 to .99 with 80% being .9 or greater.

Differences amongst conditions - The signal level giving  $d' = 1$  was calculated for each condition and observer.  $d' = 1$  is equivalent to 76% correct. The standard error of the estimate of each signal level for a fixed value of d' was 0.7 dB on average. Next the differences between the multi-channel tasks and the single channel tasks for each frequency, ear and observer at  $d' = 1$  were determined. These values and the signal levels they were derived from are recorded in Table A1 and A2 in Appendix A. The differences form the results of the study.

Number of Independent Noise Bands

		1	4	8
Number of Possible Different Signals	1	S1 - N1 0 dB	S1 - N4 1.7 dB	S1 - N8 2.1 dB
	4		S4 - N4 3.4 dB	
	8			S8 - N8 4.1 dB


  
Decrement Due to Added Noise


  
Decrement  
Due to  
Monitoring  
Task

**Figure 3:** The five experimental conditions shown in terms of number of different signal frequencies presented during a run and the number of noise bands presented simultaneously. The decrement associated with each condition is also included.

## RESULTS

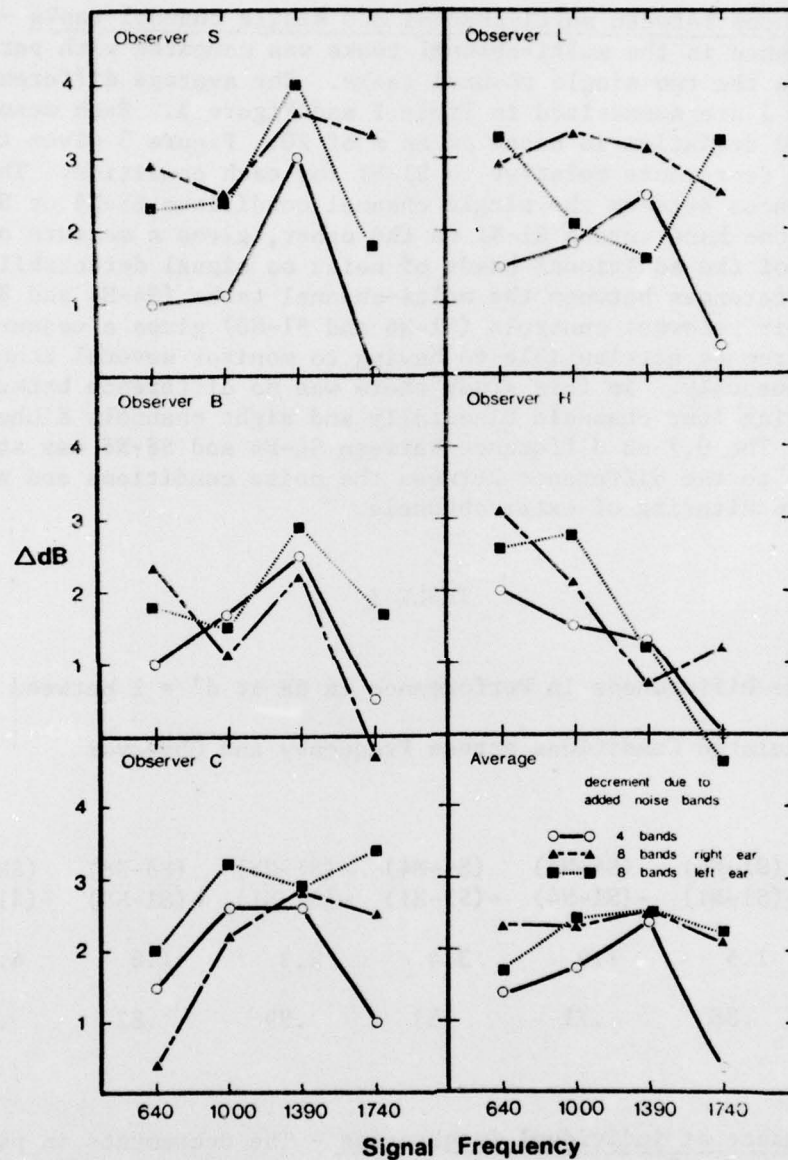
Differences between multi-channel and single channel tasks - Performance in the multi-channel tasks was compared with performance in the two single channel tasks. The average differences at  $d' = 1$  are summarized in Table I and Figure 3. Each mean and standard deviation is based on an  $n$  of 20. Figure 3 gives the average decrements relative to S1-N1 for each condition. The differences between the single channel conditions S1-N4 or S1-N8 on the one hand versus S1-N1 on the other, gives a measure of the effect of the additional bands of noise on signal detectability. The differences between the multi-channel tasks (S4-N4 and S8-N8) and their relevant controls (S1-N4 and S1-N8) gives a measure of the decrement attributable to having to monitor several channels simultaneously. In this study there was no difference between monitoring four channels binaurally and eight channels dichotically. The 0.7 dB difference between S4-N4 and S8-N8 was attributable to the difference between the noise conditions and not to the monitoring of extra channels.

TABLE I

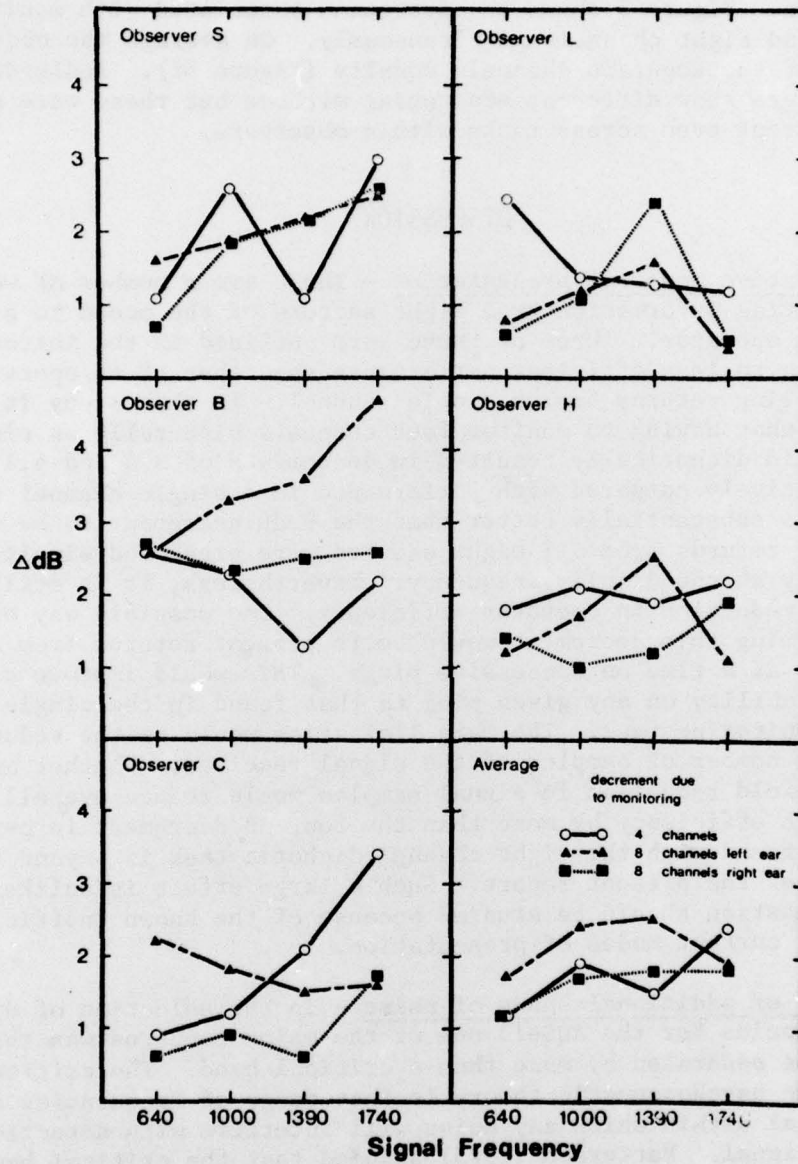
Average Differences in Performance in dB at  $d' = 1$  between  
Related Conditions across Frequency and Observer

	(S1-N4) -(S1-N1)	(S4-N4) -(S1-N4)	(S4-N4) -(S1-N1)	(S1-N8) -(S1-N1)	(S8-N8) -(S1-N8)	(S8-N8) -(S1-N1)
MEAN	1.5	1.9	3.4	2.3	1.8	4.1
S.D	.88	.71	.83	.89	.82	.95

Performance at individual frequencies - The decrements in performance due to the presence of additional noise bands and to having to monitor more than one channel have been plotted in Figures 4 and 5 for each frequency and observer. Figure 4 shows the decrement due to the presence of additional noise bands. For (S4-N1) - (S1-N1) the effect of the additional bands of noise appears to be frequency dependent. The decrement was greater when the primary masker was bracketed by the additional noise bands. When eight bands of noise were present the effect of the additional



**Figure 4:** The decrement in performance due to the presence of added noise bands in the four channel task, and the eight channel task at each ear (S8-N8 only), frequency, for each observer, and averaged across observers. Larger y values indicate greater performance decrement.



**Figure 5:** The decrement in performance due to monitoring several channels for each ear (S8-N8 only), frequency, observer and the average across observers. Increasing values along the y axis represent greater decrement in performance.

bands showed a similar but weaker and statistically unreliable pattern. Figure 5 shows the decrement associated with monitoring four and eight channels simultaneously. On average the observers monitor the separate channels equally (Figure 5f). Individual observers show different monitoring methods but these were not consistent even across tasks within observers.

## DISCUSSION

Alternative modes of presentation - There are a number of ways of presenting information from eight sectors of the ocean to a single operator. Three of these were outlined in the introduction. All led to less efficient performance than that of an operator monitoring returns from a single channel. In this study it was found that having to monitor four channels binaurally or eight channels dichotically resulted in decrements of 3.4 and 4.1 dB respectively compared with performance in a single channel task. This is substantially better than the 9 dB decrement to be expected if returns from all eight sectors were presented simultaneously at one display frequency. Nevertheless, it is still a large reduction in operator efficiency. One possible way of overcoming this decrement would be to present returns from one sector at a time on successive pings. This would improve signal detectability on any given ping to that found in the single channel monitoring task. The main limitation would be the reduction in the number of samples of the signal received. Whether an eight fold reduction in signal samples would reduce overall detection efficiency by more than the four dB decrement in performance found with the eight channel dichotic task is beyond the scope of the present report. Such a large effect is unlikely. The question should be studied because of the known inefficiency of the current modes of presentation.

Effect of additional bands of noise - In the selection of display frequencies for the AQS-13 one of the major concerns was that they be separated by more than a critical band. The critical band in psychoacoustic theory is that range of frequencies around a signal within which any noise will interfere with detection of that signal. Patterson (1975) assumed that the critical band could be represented by a simple filter and measured its shape. Using his estimate of critical band filter shape, the total noise energy added to the primary masker of a given signal by neighbouring noise bands in the complex masker would be less than 0.1 dB in the worst case. The effect of these added noise bands on signal detectability should be no greater. Interference between the sounds presented to the two ears should also be minimal. Significant contralateral masking does not occur unless the

noise in the contralateral ear is much louder than the levels used in this study. Nevertheless the simple presence of the additional noise bands in this study resulted in performance poorer by 1.5 to 2.3 dB.

The four channel binaural task versus the eight channel dichotic task - The difference between the two multi-channel tasks in this study was small. In fact two observers showed no differences at all (Table A2). Performance in the four channel binaural task was slightly better on average. This advantage might be reduced somewhat in an operational situation because the number of signal samples received doubles when the eight channel dichotic task is employed. The difference between the two tasks was due entirely to the presence of the additional noise bands. Since this decrement is not due to the simple addition of energy to the masker it is probably due to some effect on the higher level processing of the auditory stimulus. Such effects might be increased by the stresses of a vigilance situation and the presence of intense extraneous noises and situational requirements of an operational environment.

#### CONCLUSION

A multi-channel task impairs target detection. The intensity of a signal which is detectable 76% of the time in the tracking mode must be increased between 3.4 and 4.1 dB to be equally detectable in the multi-channel mode. Given this level of decrement it would be useful to consider an alternative mode of presentation. Presenting returns from different sectors successively would eliminate the decrement due to the additional bands of noise and to having to monitor several channels simultaneously.

If a multi-channel mode seems ultimately the most desirable there is little to choose between the two modes simulated in this study. The four channel binaural mode resulted in slightly better performance. This advantage might be eliminated by reducing the effect of the complex masker. In general it would be useful to study the effect of the complex masker in further detail.

## RECOMMENDATIONS

1. Returns from the eight sectors should be presented successively rather than simultaneously.
2. If a multi-channel mode of presentation is necessary because of rapid variation in target location either mode (4 sectors alternating between pings or 8 sectors presented dichotically) could be used with close to equivalent results. They should only be used for target acquisition.
3. Further study is required on ways of overcoming the effects of the complex masker which detracts from performance in the multi-channel modes.

REFERENCES

KLUMPP R.G. & LEONARD J.L. (1972) Detection performance for various modes of auditory presentation on the AN/AQS-13 sonar. Technical note NUC TN 663.

MORTON J. & COPEMAN A. (1968) The effects of signal intensity and channel multiplicity upon signal detection in narrow band noise. APRU, Medical Research Council, RNP 69/1120.

PATTERSON R.D. (1976) Auditory filter shapes derived with noise stimuli. J. Acoust. Soc. Amer. 59, 640-654.

Frequency (Hz)	Bandwidth (Hz)	Peak Amplitude (dB)	Bandwidth (Hz)	Peak Amplitude (dB)	Bandwidth (Hz)	Peak Amplitude (dB)	Bandwidth (Hz)	Peak Amplitude (dB)
100	10	10	100	10	100	10	100	10
200	20	20	200	20	200	20	200	20
300	30	30	300	30	300	30	300	30
400	40	40	400	40	400	40	400	40
500	50	50	500	50	500	50	500	50
600	60	60	600	60	600	60	600	60
700	70	70	700	70	700	70	700	70
800	80	80	800	80	800	80	800	80
900	90	90	900	90	900	90	900	90
1000	100	100	1000	100	1000	100	1000	100
1100	110	110	1100	110	1100	110	1100	110
1200	120	120	1200	120	1200	120	1200	120
1300	130	130	1300	130	1300	130	1300	130
1400	140	140	1400	140	1400	140	1400	140
1500	150	150	1500	150	1500	150	1500	150
1600	160	160	1600	160	1600	160	1600	160
1700	170	170	1700	170	1700	170	1700	170
1800	180	180	1800	180	1800	180	1800	180
1900	190	190	1900	190	1900	190	1900	190
2000	200	200	2000	200	2000	200	2000	200
2100	210	210	2100	210	2100	210	2100	210
2200	220	220	2200	220	2200	220	2200	220
2300	230	230	2300	230	2300	230	2300	230
2400	240	240	2400	240	2400	240	2400	240
2500	250	250	2500	250	2500	250	2500	250
2600	260	260	2600	260	2600	260	2600	260
2700	270	270	2700	270	2700	270	2700	270
2800	280	280	2800	280	2800	280	2800	280
2900	290	290	2900	290	2900	290	2900	290
3000	300	300	3000	300	3000	300	3000	300
3100	310	310	3100	310	3100	310	3100	310
3200	320	320	3200	320	3200	320	3200	320
3300	330	330	3300	330	3300	330	3300	330
3400	340	340	3400	340	3400	340	3400	340
3500	350	350	3500	350	3500	350	3500	350
3600	360	360	3600	360	3600	360	3600	360
3700	370	370	3700	370	3700	370	3700	370
3800	380	380	3800	380	3800	380	3800	380
3900	390	390	3900	390	3900	390	3900	390
4000	400	400	4000	400	4000	400	4000	400
4100	410	410	4100	410	4100	410	4100	410
4200	420	420	4200	420	4200	420	4200	420
4300	430	430	4300	430	4300	430	4300	430
4400	440	440	4400	440	4400	440	4400	440
4500	450	450	4500	450	4500	450	4500	450
4600	460	460	4600	460	4600	460	4600	460
4700	470	470	4700	470	4700	470	4700	470
4800	480	480	4800	480	4800	480	4800	480
4900	490	490	4900	490	4900	490	4900	490
5000	500	500	5000	500	5000	500	5000	500
5100	510	510	5100	510	5100	510	5100	510
5200	520	520	5200	520	5200	520	5200	520
5300	530	530	5300	530	5300	530	5300	530
5400	540	540	5400	540	5400	540	5400	540
5500	550	550	5500	550	5500	550	5500	550
5600	560	560	5600	560	5600	560	5600	560
5700	570	570	5700	570	5700	570	5700	570
5800	580	580	5800	580	5800	580	5800	580
5900	590	590	5900	590	5900	590	5900	590
6000	600	600	6000	600	6000	600	6000	600
6100	610	610	6100	610	6100	610	6100	610
6200	620	620	6200	620	6200	620	6200	620
6300	630	630	6300	630	6300	630	6300	630
6400	640	640	6400	640	6400	640	6400	640
6500	650	650	6500	650	6500	650	6500	650
6600	660	660	6600	660	6600	660	6600	660
6700	670	670	6700	670	6700	670	6700	670
6800	680	680	6800	680	6800	680	6800	680
6900	690	690	6900	690	6900	690	6900	690
7000	700	700	7000	700	7000	700	7000	700
7100	710	710	7100	710	7100	710	7100	710
7200	720	720	7200	720	7200	720	7200	720
7300	730	730	7300	730	7300	730	7300	730
7400	740	740	7400	740	7400	740	7400	740
7500	750	750	7500	750	7500	750	7500	750
7600	760	760	7600	760	7600	760	7600	760
7700	770	770	7700	770	7700	770	7700	770
7800	780	780	7800	780	7800	780	7800	780
7900	790	790	7900	790	7900	790	7900	790
8000	800	800	8000	800	8000	800	8000	800
8100	810	810	8100	810	8100	810	8100	810
8200	820	820	8200	820	8200	820	8200	820
8300	830	830	8300	830	8300	830	8300	830
8400	840	840	8400	840	8400	840	8400	840
8500	850	850	8500	850	8500	850	8500	850
8600	860	860	8600	860	8600	860	8600	860
8700	870	870	8700	870	8700	870	8700	870
8800	880	880	8800	880	8800	880	8800	880
8900	890	890	8900	890	8900	890	8900	890
9000	900	900	9000	900	9000	900	9000	900
9100	910	910	9100	910	9100	910	9100	910
9200	920	920	9200	920	9200	920	9200	920
9300	930	930	9300	930	9300	930	9300	930
9400	940	940	9400	940	9400	940	9400	940
9500	950	950	9500	950	9500	950	9500	950
9600	960	960	9600	960	9600	960	9600	960
9700	970	970	9700	970	9700	970	9700	970
9800	980	980	9800	980	9800	980	9800	980
9900	990	990	9900	990	9900	990	9900	990
10000	1000	1000	10000	1000	10000	1000	10000	1000

## APPENDIX A

TABLE A1

Signal Level in dB SPL Resulting in Performance

of  $d' = 1$  for each Combination of Frequency

Observer Condition and Ear.

OBSERVER	SIGNAL FREQUENCY	CONDITIONS						
		S1-N1	S1-N4	S4-N4	S1-N8		S8-N8	
					RIGHT	LEFT	RIGHT	LEFT
S	640	63.9	64.9	66.0	66.8	66.2	68.4	66.9
	1000	64.5	65.6	68.2	67.0	66.9	68.9	68.8
	1390	64.0	67.0	68.1	67.6	67.9	69.8	70.1
	1740	63.5	63.5	66.5	66.8	65.3	69.3	67.9
	AVERAGE	64.0	65.3	67.2	67.1	66.6	69.1	68.4
L	640	63.7	65.2	67.8	66.6	67.0	67.4	67.6
	1000	63.5	65.3	66.7	66.8	65.6	68.0	66.7
	1390	63.7	66.2	67.5	66.8	65.3	68.4	67.7
	1740	64.0	64.4	65.6	66.5	67.2	66.9	67.7
	AVERAGE	63.8	65.3	66.9	66.7	66.3	67.7	67.4
B	640	62.2	63.2	65.8	64.5	64.0	67.1	66.7
	1000	63.2	64.9	67.2	64.3	64.7	67.6	67.0
	1390	62.1	64.6	65.9	64.3	65.0	67.9	67.5
	1740	63.0	63.5	65.7	62.7	64.7	67.4	67.3
	AVERAGE	62.6	64.1	66.2	64.0	64.6	67.5	67.1
H	640	65.3	67.3	69.1	68.4	67.9	69.6	69.3
	1000	65.1	66.6	68.7	67.2	67.9	68.9	68.8
	1390	66.0	67.3	69.2	66.7	67.2	69.2	68.4
	1740	65.3	65.3	67.5	66.5	64.9	67.6	66.8
	AVERAGE	65.4	66.6	68.6	67.2	67.0	68.8	68.4
C	640	65.2	66.7	67.6	65.6	67.2	67.8	67.8
	1000	65.6	68.2	69.4	67.9	68.8	69.7	69.7
	1390	65.7	68.3	70.4	68.5	68.6	70.0	69.2
	1740	63.7	64.7	68.1	66.2	67.1	67.8	68.8
	AVERAGE	65.1	67.0	68.9	67.1	67.9	68.8	68.9

## APPENDIX A

TABLE A2

Differences in Performance in dB at  $d' = 1$  between  
 Related Conditions for each Combination of  
 Frequency and Observer.

OBSERVER	SIGNAL FREQUENCY	CONDITIONS					
		(S1-N4) (S1-N1)	(S4-N4) (S1-N4)	(S4-N4) (S1-N1)	(S1-N8) (S1-N1)	(S8-N8) (S1-N8)	(S8-N8) (S1-N1)
S	640	1.0	1.1	2.1	2.6	1.15	3.75
	1000	1.1	2.6	3.7	2.45	1.9	4.35
	1390	3.0	1.1	4.1	3.75	2.2	5.95
	1740	0.0	3.0	3.0	2.55	2.55	5.1
	AVERAGE	1.28	1.95	3.23	2.84	1.95	4.79
L	640	1.5	2.6	4.1	3.1	.7	3.8
	1000	1.8	1.4	3.2	2.7	1.15	3.85
	1390	2.5	1.3	3.8	2.35	2.0	4.35
	1740	.4	1.2	1.6	2.85	.45	3.3
	AVERAGE	1.55	1.63	3.18	2.75	1.08	3.83
B	640	1.0	2.6	3.6	2.05	2.65	4.7
	1000	1.7	2.3	4.0	1.3	2.8	4.1
	1390	2.5	1.3	3.8	2.55	3.05	5.6
	1740	.5	2.2	2.7	0.7	3.65	4.35
	AVERAGE	1.43	2.1	3.53	1.65	3.04	4.69
H	640	2.0	1.8	3.8	2.85	1.3	4.15
	1000	1.5	2.1	3.6	2.45	1.35	3.8
	1390	1.3	1.9	3.2	.95	1.85	2.8
	1740	0.0	2.2	2.2	.4	1.5	1.9
	AVERAGE	1.2	2.0	3.2	1.66	1.5	3.16
C	640	1.5	.9	2.4	1.2	1.4	2.6
	1000	2.6	1.2	3.8	2.75	1.35	4.1
	1390	2.6	2.1	4.7	2.85	1.05	3.9
	1740	1.0	3.4	4.4	2.95	1.65	4.6
	AVERAGE	1.93	1.9	3.83	2.44	1.36	3.8

Unclassified

Security Classification

DOCUMENT CONTROL DATA - R & D		
(Security classification of title, body of abstract and indexing annotation must be entered when the overall document is classified)		
1. ORIGINATING ACTIVITY  DCIEM	2a. DOCUMENT SECURITY CLASSIFICATION Unclassified	
	2b. GROUP Behavioural Sciences	
3. DOCUMENT TITLE  Detection of Targets in Three Simulated Sonar Presentation Modes.		
4. DESCRIPTIVE NOTES (Type of report and inclusive dates) Technical Report		
5. AUTHOR(S) (Last name, first name, middle initial) McFadden S.M. Olsen L. Garland W.R.		
6. DOCUMENT DATE	7a. TOTAL NO. OF PAGES	7b. NO. OF REFS Three
8a. PROJECT OR GRANT NO.	9a. ORIGINATOR'S DOCUMENT NUMBER(S)  Technical Report No. 76-X-70	
8b. CONTRACT NO.	9b. OTHER DOCUMENT NO.(S) (Any other numbers that may be assigned this document)	
10. DISTRIBUTION STATEMENT Unlimited		
11. SUPPLEMENTARY NOTES	12. SPONSORING ACTIVITY DCIEM	
13. ABSTRACT Target detection performance was compared across three simulated sonar presentation modes: single channel binaural, four channel binaural, and eight channel dichotic detection. The multi-channel tasks simulated the "search" modes of the AQS-13 and AQS-13B sonars respectively. The results showed a 3.4 dB decrement in performance for the four channel task and a 4.1 dB decrement in performance for the eight channel task compared to the single channel task. Almost half the decrement in performance was due simply to the presence of the additional bands of noise, the other half to the requirement that more than one channel be monitored at a time. One possible way to improve target acquisition would be to present the channels successively on successive pings.		

## KEY WORDS

## INSTRUCTIONS

1. **ORIGINATING ACTIVITY:** Enter the name and address of the organization issuing the document.
- 2a. **DOCUMENT SECURITY CLASSIFICATION:** Enter the overall security classification of the document including special warning terms whenever applicable.
- 2b. **GROUP:** Enter security reclassification group number. The three groups are defined in Appendix 'M' of the DRB Security Regulations.
3. **DOCUMENT TITLE:** Enter the complete document title in all capital letters. Titles in all cases should be unclassified. If a sufficiently descriptive title cannot be selected without classification, show title classification with the usual one-capital-letter abbreviation in parentheses immediately following the title.
4. **DESCRIPTIVE NOTES:** Enter the category of document, e.g. technical report, technical note or technical letter. If appropriate, enter the type of document, e.g. interim, progress, summary, annual or final. Give the inclusive dates when a specific reporting period is covered.
5. **AUTHOR(S):** Enter the name(s) of author(s) as shown on or in the document. Enter last name, first name, middle initial. If military, show rank. The name of the principal author is an absolute minimum requirement.
6. **DOCUMENT DATE:** Enter the date (month, year) of Establishment approval for publication of the document.
- 7a. **TOTAL NUMBER OF PAGES:** The total page count should follow normal pagination procedures, i.e., enter the number of pages containing information.
- 7b. **NUMBER OF REFERENCES:** Enter the total number of references cited in the document.
- 8a. **PROJECT OR GRANT NUMBER:** If appropriate, enter the applicable research and development project or grant number under which the document was written.
- 8b. **CONTRACT NUMBER:** If appropriate, enter the applicable number under which the document was written.
- 9a. **ORIGINATOR'S DOCUMENT NUMBER(S):** Enter the official document number by which the document will be identified and controlled by the originating activity. This number must be unique to this document.
- 9b. **OTHER DOCUMENT NUMBER(S):** If the document has been assigned any other document numbers (either by the originator or by the sponsor), also enter this number(s).
10. **DISTRIBUTION STATEMENT:** Enter any limitations on further dissemination of the document, other than those imposed by security classification, using standard statements such as:
  - (1) "Qualified requesters may obtain copies of this document from their defence documentation center."
  - (2) "Announcement and dissemination of this document is not authorized without prior approval from originating activity."
11. **SUPPLEMENTARY NOTES:** Use for additional explanatory notes.
12. **SPONSORING ACTIVITY:** Enter the name of the departmental project office or laboratory sponsoring the research and development. Include address.
13. **ABSTRACT:** Enter an abstract giving a brief and factual summary of the document, even though it may also appear elsewhere in the body of the document itself. It is highly desirable that the abstract of classified documents be unclassified. Each paragraph of the abstract shall end with an indication of the security classification of the information in the paragraph (unless the document itself is unclassified) represented as (TS), (S), (C), (R), or (U).

The length of the abstract should be limited to 20 single-spaced standard typewritten lines; 7½ inches long.
14. **KEY WORDS:** Key words are technically meaningful terms or short phrases that characterize a document and could be helpful in cataloging the document. Key words should be selected so that no security classification is required. Identifiers, such as equipment model designation, trade name, military project code name, geographic location, may be used as key words but will be followed by an indication of technical context.

FILM  
4