

AD-A038 012

NAVAL POSTGRADUATE SCHOOL MONTEREY CALIF
ERROR BOUNDS FOR THE LANCHESTER EQUATIONS WITH VARIABLE COEFFIC--ETC(U)
MAR 77 J G TAYLOR, C COMSTOCK
NPS-53CS77031

F/G 12/1

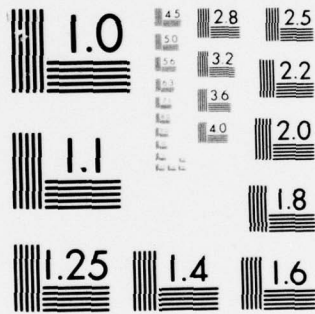
UNCLASSIFIED

NL

| OF |
AD
A038012



END
DATE
FILMED
4 - 77



MICROCOPY RESOLUTION TEST CHART
NATIONAL BUREAU OF STANDARDS-1963-A

AD A 038012

NPS-53Cs77031

NAVAL POSTGRADUATE SCHOOL
Monterey, California



DDC
RECEIVED
APR 11 1977

ERROR BOUNDS FOR THE LANCHESTER EQUATIONS
WITH VARIABLE COEFFICIENTS

by

James G. Taylor and Craig Comstock

Final Report for Period

October - December 1976

Approved for public release; distribution unlimited.

AD No. _____
DDC FILE COPY

NAVAL POSTGRADUATE SCHOOL
Monterey, California

Rear Admiral Isham Linder
Superintendent

Jack R. Borsting
Provost

Reproduction of all or part of this report is authorized.

This report was prepared by:

ACCESSION NO.	
RTIS	Write Section <input checked="" type="checkbox"/>
BCC	Mail Section <input type="checkbox"/>
UNANNOUNCED	<input type="checkbox"/>
JUSTIFICATION	
BY	
SEC. SITUATION/AVAILABILITY CODE	
AVAIL. NO. OF REPROD.	
AI	

James G Taylor
JAMES G. TAYLOR, Associate Professor
Department of Operations Research

Craig Comstock
CRAIG COMSTOCK, Professor
Department of Mathematics

Reviewed by:

Carroll O. Wilde
CARROLL O. WILDE, Chairman
Department of Mathematics

Michael G. Sovereign
MICHAEL G. SOVEREIGN, Chairman
Department of Operations Research

Released by:

Robert Fossum
ROBERT FOSSUM
Dean of Research

UNCLASSIFIED

SECURITY CLASSIFICATION OF THIS PAGE (When Data Entered)

REPORT DOCUMENTATION PAGE		READ INSTRUCTIONS BEFORE COMPLETING FORM
1. REPORT NUMBER 14 NPS-53Cs77031	2. GOVT ACCESSION NO.	3. RECIPIENT'S CATALOG NUMBER
4. TITLE (and Subtitle) 6 Error Bounds for the Lanchester Equations with Variable Coefficients		5. TYPE OF REPORT & PERIOD COVERED 91 Final Report 1 Oct - 31 Dec 76
7. AUTHOR(s) 10 James G. Taylor Craig Comstock		6. PERFORMING ORG. REPORT NUMBER
9. PERFORMING ORGANIZATION NAME AND ADDRESS Naval Postgraduate School Monterey, CA 93940		8. CONTRACT OR GRANT NUMBER(s)
11. CONTROLLING OFFICE NAME AND ADDRESS		10. PROGRAM ELEMENT, PROJECT, TASK AREA & WORK UNIT NUMBERS
		12. REPORT DATE 90 March 1977
		13. NUMBER OF PAGES 13
14. MONITORING AGENCY NAME & ADDRESS (if different from Controlling Office)		15. SECURITY CLASS. (of this report) Unclassified
		15a. DECLASSIFICATION/DOWNGRADING SCHEDULE
16. DISTRIBUTION STATEMENT (of this Report) Approved for public release; distribution unlimited.		
17. DISTRIBUTION STATEMENT (of the abstract entered in Block 20, if different from Report) 251 450		
18. SUPPLEMENTARY NOTES		
19. KEY WORDS (Continue on reverse side if necessary and identify by block number) Error Estimates Lanchester Equation		
20. ABSTRACT (Continue on reverse side if necessary and identify by block number) Previous error bounds for the classical Liouville-Green solutions to second order ordinary differential equations are sharpened. Applications are made to the Lanchester model for combat between two homogeneous forces.		

DD FORM 1473 1 JAN 73

EDITION OF 1 NOV 65 IS OBSOLETE
S/N 0102-014-6601

(1)

UNCLASSIFIED
SECURITY CLASSIFICATION OF THIS PAGE (When Data Entered)

UNCLASSIFIED

SECURITY CLASSIFICATION OF THIS PAGE(When Data Entered)

[Empty grid area for data entry]

DD Form 1473 (BACK)
S/N 0102-014-6601
1 Jan 73

UNCLASSIFIED

SECURITY CLASSIFICATION OF THIS PAGE(When Data Entered)

We are interested in solving the coupled set of equations

$$\begin{aligned}\frac{dx}{dt} &= -a(t)y \\ \frac{dy}{dt} &= -b(t)x\end{aligned}\tag{1}$$

For the problems we are interested in, these equations do not reduce to any known special functions. These equations arise in the study of combat models where x and y are opposing forces and $a(t)$ and $b(t)$ are the attrition rate coefficients related to the effectiveness of weapons. Lanchester [1] first looked at these types of models for aircraft battles, using constant coefficients (in which case the solution is in terms of exponentials) and so these types of equations are referred to as Lanchester equations. There are also special cases of the coefficients for which the solutions to (1) are expressible in terms of the generalized Airy functions [2].

We are interested in problems where the coefficients $a(t)$ and $b(t)$ are positive and continuous. In that case we expect that we can find solutions which are linear combinations of monotonic, exponential like functions. If we have such a set, then the analysis of the forces necessary to guarantee a win for one side, say x , is very much simplified. So we are interested in determining exponential like solutions for (1), and error bounds for the solutions.

We convert (1) into a single second order differential equations for $x(t)$

$$\begin{aligned}\frac{d^2x}{dt^2} - \left\{a^{-1} \frac{da}{dt}\right\} \frac{dx}{dt} - a(t)b(t)x &= 0 \\ x(0) = x_0, \quad a^{-1}(0) \frac{dx}{dt}(0) &= -y_0\end{aligned}\tag{2}$$

Equation (2) is still awkward. Let us define two useful quantities, the intensity of combat $I(t)$ and relative fire effectiveness $R(t)$,

$$I(t) \equiv \sqrt{a(t)b(t)} \quad (3)$$

$$R(t) \equiv \sqrt{\frac{a(t)}{b(t)}} \quad (4)$$

A change of independent variables will simplify (2). Let

$$\tau \equiv \int_0^t I(s) ds, \quad (5)$$

then (2) becomes

$$\frac{d^2 x}{d\tau^2} - R^{-1} \frac{dR}{d\tau} \frac{dx}{d\tau} - x = 0 \quad (6)$$

We now reduce (6) to the standard Liouville-Green form by the usual change of dependent variable

$$W = \frac{x}{\sqrt{R}} \quad (7)$$

So (6) becomes

$$\frac{d^2 W}{d\tau^2} - \left[1 + \sqrt{R} \frac{d^2}{d\tau^2} (1/\sqrt{R}) \right] W = 0 \quad (8)$$

Then the standard estimates for (8) say that there are two solutions to (8)

$$W = c_1 e^{-\tau} + c_2 e^{\tau},$$

i.e. there are two solutions to (2)

$$x(t) = \sqrt{\frac{b(t)}{a(t)}} \left\{ c_1 e^{\int_0^t I(s) ds} + c_2 e^{-\int_0^t I(s) ds} \right\} \quad (9)$$

What is the error in using (9)? A number of error estimates are available [3], [4]. It turns out that they are not quite good enough for our purposes. The estimates depend upon whether one is interested in the dominant solution or in the subdominant solution.

Looking first at the dominant solution, e^τ , we take

$$w_1 = e^\tau [1 + h_1(\tau)] \quad (10)$$

Then the error $h_1(\tau)$ satisfies

$$h_1'' + 2h_1' = \psi(1 + h_1) \quad (11)$$

where

$$\psi \equiv \sqrt{R} \frac{d^2}{d\tau^2} (1/\sqrt{R}) \quad (12)$$

Converting (11) to an integral equation with zero initial conditions we have

$$h_1(\tau) = \frac{1}{2} \int_0^\tau [1 - e^{-2(\tau-s)}] \psi(s) [1 + h_1(s)] ds \quad (13)$$

Our error estimates are based on Willet's generalization of Gronwall's lemma.

Lemma 1. Let

$$h(\tau) = \int_0^\tau K(s, \tau) \psi(s) [J(s) + h(s)] ds$$

and let

$$|K(s, \tau)| \leq Q(s)P(\tau),$$

then

$$|h(\tau)| \leq P(\tau) \int_0^\tau |J(s)| Q(s) |\psi(s)| \exp \left\{ \int_s^\tau P(z) Q(z) |\psi(z)| dz \right\} ds \quad (14)$$

Proof: See Willet [5].

An immediate corollary is:

Corollary. Let $M(z) = Q(z) \max \{|J(z)|, P(z)\}$ then

$$|h(\tau)| \leq P(\tau) \left[\exp \left\{ \int_0^\tau M(s) |\psi(s)| ds \right\} - 1 \right] \quad (15)$$

QED

Proof: Integrate (14), using $M(z)$.

In the case of equation (13)

$$K(s, \tau) = \frac{1}{2} (1 - e^{-2(\tau-s)}) \leq \frac{1}{2} (1 - e^{-2\tau})$$

$$J(s) = 1$$

Thus we can take $P(\tau) = 1 - e^{-2\tau}$ and $Q(s) = \frac{1}{2}$. Then lemma 1 gives

Theorem 1. The dominant solution to (8) satisfies

$$\begin{aligned} W_1 &= e^\tau [1 + h_1(\tau)] \\ &\leq e^\tau \left[1 + (1 - e^{-2\tau}) \left(\exp \left\{ \int_0^\tau \frac{1}{2} |\psi(s)| ds \right\} - 1 \right) \right] \end{aligned} \quad (16)$$

QED

As for the subdominant solution, we take

$$W_2 = e^{-\tau} [1 + h_2(\tau)]$$

and then h_2 satisfies

$$h_2'' - 2h_2' = \psi(1 + h_2) \quad (17)$$

which converts to

$$h_2(\tau) = \int_0^\tau \frac{1}{2} \left[e^{2(\tau-s)} - 1 \right] \psi(s) [1 + h_2(s)] ds \quad (18)$$

Now we have

$$K(s, \tau) = \frac{1}{2} e^{2(\tau-s)} - 1 \leq \frac{1}{2} (e^{2\tau} - 1) e^{-2s}$$

Then we have

Theorem 2. The subdominant solution to (8) satisfies

$$\begin{aligned} W_2 &= e^{-\tau} [1 + h_2(\tau)] \\ &\leq e^{-\tau} \left[1 + (e^{2\tau} - 1) \int_0^\tau e^{-2s} \left| \frac{\psi(s)}{2} \right| \exp \int_s^\tau (1 - e^{-2z}) \left| \frac{\psi(z)}{2} \right| dz ds \right] \end{aligned} \quad (19)$$

QED

Observe that we did not use the corollary on (19).

We can see that our estimates depend very strongly on ψ , given by (12).

For the Lanchester equations (1), the coefficients $a(t)$ and $b(t)$, for many applications, can be expressed by

$$\begin{aligned} a(t) &= k_a (t + c)^\mu \\ b(t) &= k_b (t + c + a)^\nu \end{aligned} \quad (20)$$

where c is the "starting" parameter, and A is an "off-set" parameter (so y can have a different firing range than x). These are referred to as the "power rate" coefficients. For future use, let

$$B = \sqrt{k_a k_b}$$

$$\delta = \frac{\mu + \nu + 2}{2} .$$

We first consider the case of no offset, i.e. $A = 0$. Then (see (5))

$$\tau = B \int_0^t (t+c)^{\frac{\mu+\nu}{2}} dt = B \left[\frac{(t+c)^\delta}{\delta} - \frac{c^\delta}{\delta} \right] \quad (21)$$

and

$$\psi = -\frac{\nu - \mu}{16} \frac{(\nu + 3\mu + 4)}{(\delta\tau + c^\delta)^2} . \quad (22)$$

We see that for $-1 < \mu < \nu$ that ψ is negative, and

$$\left[\exp \int_0^\tau \left| \frac{\psi(s)}{2} \right| ds \right] - 1$$

$$= -1 + \exp \left\{ \frac{(\nu - \mu)(\nu + 3\mu + 4)}{32\delta B A^\delta} \right\} \exp \left\{ -\frac{(\nu - \mu)(\nu + 3\mu + 4)}{32\delta B (A^\delta + \delta\tau)} \right\} .$$

Let

$$\gamma \equiv \frac{(\nu - \mu)}{32\delta B} (\nu + 3\mu + 4) \quad (23)$$

$$\text{and } D_1 = \exp(\gamma/A^\delta) .$$

Then (16) becomes

$$w_1 \leq e^\tau (D_1 \exp(-\gamma/(A^\delta + \delta\tau))) + e^{-2\tau} - D_1 e^{-2\tau} \exp(-\gamma/(A^\delta + \delta\tau))$$

as an error term for the dominant solution.

For the subdominant solution the corollary gives too crude an estimate. Even with using the lemma, the error estimate is not good. Integrating by parts we get

$$\begin{aligned}
w_2 &= e^{-\tau} [1 + h_2(\tau)] \\
&\leq e^{-\tau} [1 + (e^{2\tau} - 1) \left(1 - \exp \left[\int_0^\tau (1 - e^{-2z}) \left| \frac{\psi}{2} \right| dz \right] \right. \\
&\quad \left. + \int_0^\tau \left| \frac{\psi}{2} \right| \exp \left[\int_s^\tau (1 - e^{-2z}) \left| \frac{\psi(z)}{2} \right| dz \right] ds \right)].
\end{aligned}$$

Working this out we get

$$w_2 \leq e^{-\tau} \left[e^{2\tau} + O \left(\exp \left(\frac{\gamma}{\tau \delta + A \delta} \right) \right) \right] \quad (25)$$

This is not a very exciting bound, but we are unable to do any better, using the Willet result.

We can, however, alter the Willet result. The subdominant solution error also satisfies the equation

$$h_2 = \frac{1}{2} \int_\tau^\infty [1 - e^{-2(s-\tau)}] \psi(s) [1 + h_2(s)] ds \quad (26)$$

We now prove

Lemma 2. If $h(\tau)$ satisfies

$$h(\tau) \leq \int_\tau^\infty K(s, \tau) \psi(s) [J(s) + h(s)] ds \quad (27)$$

and

$$|K(s, \tau)| \leq P(\tau) Q(s) \quad (28)$$

where K , ψ , and J are all ≥ 0 , then

$$h(\tau) \leq P(\tau) \int_\tau^\infty \psi(s) Q(s) J(s) \exp \left[\int_\tau^s P(\sigma) Q(\sigma) \psi(\sigma) d\sigma \right] ds \quad (29)$$

Proof. Eq. (27) can be written, using (28)

$$\frac{h(\tau)}{P(\tau)} \leq \int_\tau^\infty Q(s) \psi(s) J(s) ds + \int_\tau^\infty Q(s) \psi(s) h(s) ds \quad .$$

Differentiating

$$\left(\frac{h}{p}\right)' \leq -Q(\tau)\psi(\tau)J(\tau) - Q(\tau)\psi(\tau)h(\tau) \frac{P(\tau)}{P(\tau)} .$$

Therefore

$$\left(\frac{h}{p}\right)' + Q\psi P\left(\frac{h}{p}\right) \leq -Q\psi J .$$

Integrating we get

$$\begin{aligned} \frac{h(\tau)}{P(\tau)} &\leq \int_{\tau}^{\infty} Q(s)\psi(s)J(s) \exp\left[\int_{\tau}^s P(\sigma)Q(\sigma)\psi(\sigma)d\sigma\right] ds \\ &+ K \exp\left[\int_{\tau}^{\infty} P(\sigma)Q(\sigma)\psi(\sigma)d\sigma\right] . \end{aligned}$$

But $h(\infty) = 0$, so $K = 0$.

QED

For equation (26) we have

$$K(s, \tau) = \frac{1}{2} \left[1 - e^{-2(s - \tau)} \right] \leq 1 \cdot \frac{1}{2} .$$

Thus

$$\begin{aligned} h_2 &\leq \int_{\tau}^{\infty} \frac{\psi(s)}{2} \exp\left[\int_{\tau}^s \frac{\psi}{2}(\sigma)d\sigma\right] ds \\ &= \exp\left\{\int_{\tau}^{\infty} \frac{\psi(\sigma)}{2} d\sigma\right\} - 1 . \end{aligned} \quad (30)$$

This is the same bound found by Olver [3].

For the case of the power attrition coefficients with no offset we have

$$w_2 \leq e^{-\tau} \exp\left(\frac{\gamma}{A^{\delta} + \delta\tau}\right) \quad (31)$$

which is a fairly reasonable bound.

For the case where $\mu = \nu = 1$, the linear case, we can also get some explicit results with offset. That is

$$a(t) = k_a(t + c)$$

$$b(t) = k_b(t + c + A) .$$

Then

$$\tau = \frac{BA^2}{8} \left\{ \eta\sqrt{\eta^2 - 1} - \ln(\eta + \sqrt{\eta^2 - 1}) \right\} \quad (32)$$

where

$$\eta \equiv 1 + \frac{2(t+c)}{A} .$$

Then

$$\begin{aligned} & \frac{1}{2} \int_{\tau_0}^{\tau} \psi(\sigma) d\sigma \\ &= \frac{1}{16BA^2} \left\{ \frac{4(t+c)^3 - 6A(t+c)^2 - 12A^2(t+c) - 7A^3}{[(t+c)(t+c+A)]^{3/2}} \right. \\ & \quad \left. - \frac{4c^3 - 6Ac^2 - 12A^2c - 7A^3}{[C(C+A)]^{3/2}} \right\} \end{aligned} \quad (33)$$

while

$$\begin{aligned} & \frac{1}{2} \int_{\tau}^{\infty} \psi(\sigma) d\sigma \\ &= \frac{1}{16BA^2} \left\{ 4 - \frac{4(t+c)^3 - 6A(t+c)^2 - 12A^2(t+c) - 7A^3}{[(t+c)(t+c+A)]^{3/2}} \right\} . \end{aligned} \quad (34)$$

Both integrals are monotone increasing.

For the general case

$$\begin{aligned} & \frac{1}{2} \int_{\tau_0}^{\tau} \psi(s) ds \\ &= \frac{1}{2\sqrt{k_a k_b}} \int_{\eta_0}^{\eta} \left\{ \frac{(\mu + \frac{3}{4}\mu^2)(\eta^2 + A\eta + A^2/4) - (\nu + \nu^2/4)(\eta^2 - A\eta + A^2/4)}{(\eta - A/2)^2 + \mu/2} \frac{1}{(\eta + A/2)^2 + \nu/2} \right. \\ & \quad \left. - \frac{\frac{1}{2}\mu\nu}{(\eta - A/2)^2 + \mu/2} \frac{1}{(\eta + A/2)^2 + \nu/2} \right\} d\eta \end{aligned} \quad (35)$$

where $\eta \equiv t + c + A/2$.

REFERENCES

- [1] Lanchester, F. W., "Aircraft in Warfare: The Dawn of the Fourth Arm - No. V., The Principle of Concentration," Engineering 98, (1914) 422-423.
- [2] Taylor, J. G. and Comstock, C., "Force Annihilation Conditions for Variable Coefficient Lanchester-type Equations of Modern Warfare" to appear Naval Res. Logistics Q. 1977.
- [3] Olver, F. W. J., Asymptotics and Special Functions, Academic Press, New York and London, 1974.
- [4] Willner, B. and Rubinfeld, L. A., "Uniform Asymptotic Solutions ...," Comm. Pure and Appl. Math 29 (1976) 343-367.
- [5] Willet, D., "A Linear Generalization of Grenwall's Inequality", Proc. Ams. 16 (1965) 774-778.

DISTRIBUTION LIST

	No. of Copies
Advanced Research Projects Agency Department of Defense Technical Library Washington, DC 20301	1
Chairman, Joint Chiefs of Staff Studies Analysis and Gaming Agency Washington, DC 20350	1
Defense Documentation Center Cameron Station Alexandria, VA 22314	2
Mr. Alvin F. Andrus, Code 230	1
Dr. Toke Jayachandran, Code 431	1
Mr. James F. Smith, Code 431	1
Office of Naval Research Department of the Navy Arlington, VA 22217	
Naval War College Technical Library Newport, RI 02840	1
Naval Ordnance Laboratory Technical Library Silver Spring, MD 20910	1
Naval Research Laboratory, Code 2029 Washington, DC 20390	1
Director, Army Research Office of the Chief for Research and Development Department of the Army Washington, DC 20310	1
Center for Naval Analyses Technical Library 1400 Wilson Boulevard Arlington, VA 22202	1
Institute for Defense Analyses 400 Army-Navy Drive Arlington, VA 22202	1

Professor Joseph Engel Systems Engineering Department Box 4348 College of Engineering University of Illinois at Chicago Circle Chicago, IL 60680	1
Professor Robert M. Thrall Department of Mathematical Sciences Rice University Houston, TX 77701	1
Mr. H. K. Weiss P.O. Box 2668 Palos Verdes Peninsula Palos Verdes, CA 90274	1
Dudley Knox Library, Code 0142 Naval Postgraduate School Monterey, CA 93940	2
Dean of Research, Code 012 Naval Postgraduate School Monterey, CA 93940	2
Professor James G. Taylor, Code 55Tw	10
Professor Craig Comstock, Code 53Cs	10
Professor Samuel H. Parry, Code 55Py	1
Professor Michael G. Sovereign, Code 55Zo	1
Professor Gerald G. Brown, Code 55Bw	1
Department of Operations Research Naval Postgraduate School Monterey, CA 93940	