

AD-A038 353

EDGEWOOD ARSENAL ABERDEEN PROVING GROUND MD
DDT-INDUCED REDUCTION IN EGGSHELL THICKNESS, WEIGHT, AND CALCIUM--ETC(U)
MAR 77 @ J KOLAJA, D E HINTON

F/6 6/6

UNCLASSIFIED

EB-TR-77012

NL

| OF |

AD
A038 353



END

DATE
FILMED
5 - 77

ADA 038353

12
B.S.

AD

EDGEWOOD ARSENAL TECHNICAL REPORT

EB-TR-77012

DDT-INDUCED REDUCTION IN EGGSHELL THICKNESS, WEIGHT, AND CALCIUM IS
ACCOMPANIED BY INHIBITION OF CALCIUM ATPASE

by

Gerald J. Kolaja, D.V.M., MAJ, VC
David E. Hinton, Ph.D.

Biomedical Laboratory

March 1977



DEPARTMENT OF THE ARMY
Headquarters, Edgewood Arsenal
Aberdeen Proving Ground, Maryland 21010



Approved for public release; distribution unlimited.

AD No. _____
DDC FILE COPY

DDC
RECEIVED
APR 19 1977
D

Disclaimer

The findings in this report are not to be construed as an official Department of the Army position unless so designated by other authorized documents.

Disposition

Destroy this report when it is no longer needed. Do not return it to the originator.

UNCLASSIFIED

SECURITY CLASSIFICATION OF THIS PAGE (When Data Entered)

REPORT DOCUMENTATION PAGE		READ INSTRUCTIONS BEFORE COMPLETING FORM	
1. REPORT NUMBER EB-TR-77012	2. GOVT ACCESSION NO.	3. RECIPIENT'S CATALOG NUMBER	
4. TITLE (and Subtitle) DDT-INDUCED REDUCTION IN EGGSHELL THICKNESS, WEIGHT, AND CALCIUM IS ACCOMPANIED BY INHIBITION OF CALCIUM ATPASE.		5. TYPE OF REPORT & PERIOD COVERED Technical Report, December 1975-April 1976.	
7. AUTHOR(s) Gerald J. Kolaja, D.V.M., MAJ, VC David E. Hinton, Ph.D.		6. PERFORMING ORG. REPORT NUMBER	
9. PERFORMING ORGANIZATION NAME AND ADDRESS Commander, Edgewood Arsenal Attn: SAREA-BL-VP Aberdeen Proving Ground, Maryland 21010		8. CONTRACT OR GRANT NUMBER(s)	
11. CONTROLLING OFFICE NAME AND ADDRESS Commander, Edgewood Arsenal Attn: SAREA-TS-R Aberdeen Proving Ground, Maryland 21010		10. PROGRAM ELEMENT, PROJECT, TASK AREA & WORK UNIT NUMBERS EPA-IAG-D6-0429	
14. MONITORING AGENCY NAME & ADDRESS (if different from Controlling Office)		12. REPORT DATE March 1977	
12. 1 pp.		13. NUMBER OF PAGES 13	
		15. SECURITY CLASS. (of this report) UNCLASSIFIED	
		15a. DECLASSIFICATION/DOWNGRADING SCHEDULE NA	
16. DISTRIBUTION STATEMENT (of this Report) Approved for public release; distribution unlimited. Copies available from: National Technical Information Service, Springfield, Virginia 22151.			
17. DISTRIBUTION STATEMENT (of the abstract entered in Block 20, if different from Report)			
18. SUPPLEMENTARY NOTES Environmental protection			
19. KEY WORDS (Continue on reverse side if necessary and identify by block number) DDT Ca ATPase Eggshell gland Microsomal fraction			
20. ABSTRACT (Continue on reverse side if necessary and identify by block number) Prolonged feeding of DDT reduces activity of calcium-transporting ATPase in the microsomal fraction of eggshell gland mucosa. Concurrent findings of thin, calcium-deficient eggshells indicate that DDT produces thin-shelled eggs by impairment of calcium transport through the avian eggshell gland.			

DD FORM 1473 1 JAN 73

EDITION OF 1 NOV 65 IS OBSOLETE

UNCLASSIFIED

SECURITY CLASSIFICATION OF THIS PAGE (When Data Entered)

401 007

13

PREFACE

The work described in this report was performed for the Environmental Protection Agency under the auspices of its toxicology contract with Edgewood Arsenal, EPA-IAG-D6-0429. This work was started in December 1975 and completed in April 1976.

In conducting the research described in this report, the investigators adhered to the "Guide for the Care and Use of Laboratory Animals," as promulgated by the Committee on Revision of the Guide for Laboratory Animals Facilities and Care of the Institute of Laboratory Animal Resources, National Research Council.

The use of trade names in this report does not constitute an official endorsement or approval of the use of such commercial hardware or software. This report may not be cited for purposes of advertisement.

Reproduction of this document in whole or in part is prohibited except with permission of the Commander, Edgewood Arsenal, Attn: SAREA-TS-R, Aberdeen Proving Ground, Maryland 21010; however, DDC and the National Technical Information Service are authorized to reproduce the document for US Government purposes.

DESIGNATION for		
WAD	White Section	<input checked="" type="checkbox"/>
WBC	Buff Section	<input type="checkbox"/>
UNCLASSIFIED		<input type="checkbox"/>
IDENTIFICATION		
CLASSIFICATION/AVAILABILITY CODES		
REF.	AVAIL.	and/or SPECIAL
A		

DDC
 RECEIVED
 APR 19 1977
 D

CONTENTS

	<u>Page</u>
I. INTRODUCTION	7
II. MATERIALS AND METHODS	7
III. RESULTS	8
LITERATURE CITED	11
DISTRIBUTION LIST	13

DDT-INDUCED REDUCTION IN EGGSHELL THICKNESS, WEIGHT, AND CALCIUM IS ACCOMPANIED BY INHIBITION OF CALCIUM ATPASE

I. INTRODUCTION.

Environmental exposure to the pesticide 2,2-bis (p-chlorophenyl)-1,1,1-trichloroethane (DDT) has been shown to cause thin-shelled eggs in a variety of avian species.¹⁻⁶ Further work has shown thin-shelled eggs to be deficient in calcium in spite of normal serum calcium levels.⁷ Thus, it is likely that the defect in calcium transport occurs within the eggshell gland, that portion of the reproductive tract responsible for deposition of calcium into the forming eggshell.⁸ A calcium-dependent ATPase has been found in high concentration in the microsomal fraction of the eggshell gland mucosa and is thought to be responsible for calcium transport.⁹ One metabolite of DDT, namely, 2,2-bis-(chlorophenyl)-1,1-dichloroethylene (DDE), inhibited Ca ATPase in the homogenate of eggshell gland from Pekin ducks.¹⁰

II. MATERIALS AND METHODS.

Mature domestic mallard ducks (*Anas platyrhynchos*) were randomly assigned to two cages with five hens and one drake per cage. The ducks were acclimated to the housing area for 1 month, and during this time were fed poultry reproductive mash (Purina Chow) *ad libitum*. Upon initiation of the exposure, treated ducks were fed poultry mash containing 50 ppm DDT. Control ducks were fed the original poultry mash without DDT. Feeding was continued for 6 months. After 5 months of feeding, egg production was induced by increasing the photoperiod from 8 to 16 hours/day. Eggs were collected daily and eggshell weight, length, width, and thickness were determined. In order to correct for changes in eggshell thickness due to changes in size, a ratio of the weight/(length \times width) (R-Value) was calculated.¹¹ After 6 months, the hen ducks were euthanatized by cervical dislocation.

The eggshell glands were rapidly excised and placed in ice-cold 0.25 M sucrose. The epithelium was removed by scraping with a clean razor blade and 1 gm was diluted to 10 ml in ice-cold 0.25 M sucrose. The mixture was homogenized in a Potter-Elvehjem tissue homogenizer at 400 rpm. The homogenate was centrifuged at 18,000 \times g max in a Beckman L-2 ultracentrifuge at 4°C; the resulting supernatant was recentrifuged at 98,000 \times g max and the pellet from this centrifugation was suspended in 0.25 M sucrose to a final volume of 3 ml. In order to assess the purity of the microsomal pellets, electron microscopic evaluation was performed. Aliquots of microsomal suspension were fixed in an equal volume of 8% glutaraldehyde in 0.4 M phosphate buffer at pH 7.2. Following sedimentation in a clinical centrifuge at 1,500 rpm for 1 minute, the pellets were processed for electron microscopic examination by routine methods.¹² The microsomal preparations were stored at -60°C until the time of assay.

Calcium ATPase activities were determined by the methods of Rorive and Kleinzeller.¹³ The amount of phosphate liberated was determined by Stanton's¹⁴ method. Calcium ATPase was expressed as μ moles Pi (inorganic phosphate) liberated/mg protein/30 minute incubation. Protein from the microsomal pellets was determined by the method of Lowry *et al.*¹⁵

Calcium was extracted by ashing a 0.5-gm sample of eggshell at 450°C for 12 hours. The ash was dissolved in concentrated HCl and calcium determinations were done by atomic absorption spectrophotometry.¹⁶

III. RESULTS.

When ducks were fed 50 ppm DDT for 6 months and brought into egg production, eggshell weights, thicknesses, and R-values were reduced (table 1). As shown, exposure to DDT resulted in eggshells which were reduced in thickness by 18% and in weight by 12%. Calculation of the R-values in both groups showed a reduction of 16% after exposure to DDT. Statistical analysis of length and width revealed no change in these parameters. When eggshells from control and DDT-fed ducks were analyzed for calcium content and weight, both parameters showed a reduction (table 2). Furthermore, the % reduction in both parameters was nearly the same (23% and 27%, respectively). It is interesting to note that the total eggshell calcium, but not the calcium concentration, was altered by DDT treatment.

Table 1. Eggshell Thickness, Weight and R-value from Control and DDT-Fed Ducks

Parameter	Control	50 ppm DDT*
Thickness (mm)	.412 ± .004	.337 ± .005
Weight (gm)	5.30 ± .11	4.68 ± .14
R-value**	.236 ± .004	.198 ± .006

* All three values are significant at $p < .01$.

** $R = \frac{\text{Weight}}{\text{Length} \times \text{Width}}$

NOTE: Each value represents a minimum of 19 eggshells ± 1 SD.

Table 2. Eggshell Weight, Calcium Concentration, and Total Calcium from Control and DDT-Fed Ducks

Measured value	Control	50 ppm DDT
gm		
Mean eggshell weight	5.50	4.26*
Mean Ca ⁺⁺ /gm eggshell	.384 ± .02	.371 ± .02
Mean total eggshell Ca ⁺⁺	2.12 ± .29	1.57 ± .08*

* Significant at $p < .01$.

NOTE: Each group represents a minimum of six eggshells ± 1 SD.

The ultrastructural composition of the representative microsomal pellets is shown in the figure. The principle organelles were rough endoplasmic reticulum, smooth endoplasmic reticulum, and fragments of microvilli and cilia.

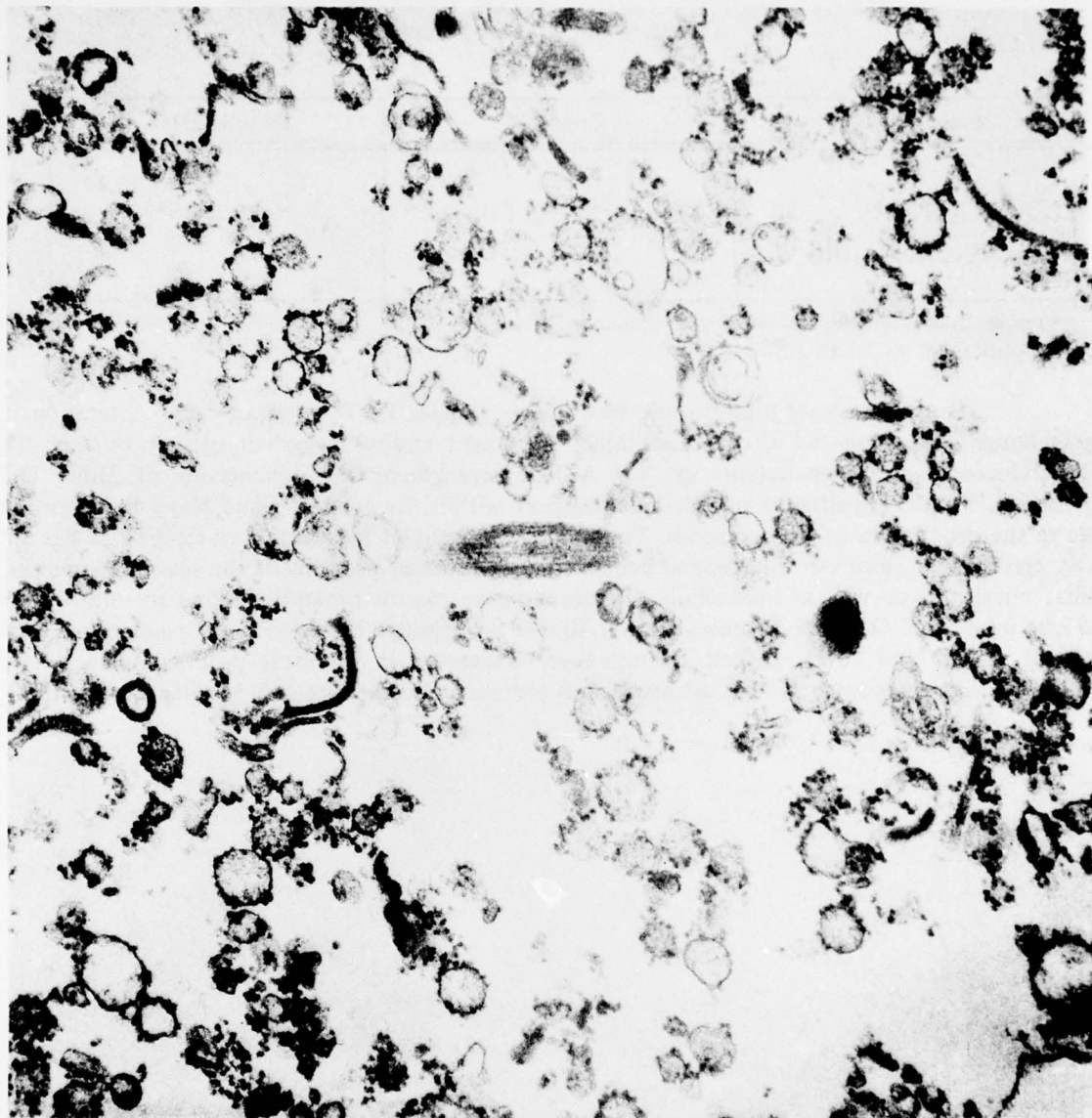


Figure. Ultrastructural Composition of Representative Microsomal Pellets

Specific activities of microsomal Ca ATPase from eggshell glands of control and DDT-fed ducks revealed a reduction of Ca ATPase ($P < .01$) after exposure (table 3). Enzyme activity in exposed ducks was 65% of control values.

Table 3. Microsomal Calcium ATPase Values from Eggshell of Control and DDT-Fed Ducks

Measured value	Control	50 ppm DDT
Ca ATPase*	9.75 ± 1.01	6.36 ± .66**
% Control activity	100	65

* μ moles Pi liberated/mg protein/30 min incubation.

** Significant at $p < .01 \pm 1$ SD.

Our data show that chronic feeding of 50 ppm DDT to ducks causes alteration in eggshell quality as evidenced by decreased thickness, weight, and total eggshell calcium. Further, the DDT-induced decrease in activity of Ca ATPase strengthens the conclusions of Miller and coworkers,¹⁰ that impairment of calcium transport within the eggshell gland plays an important role in the production of thin eggshells. To date, the subcellular localization of Ca ATPase has not been established. Since our microsomal pellets (figure) revealed portions of the plasma membrane (cilia, microvilli) as well as intracellular membranes, we cannot presently define the site of Ca ATPase inhibition. Our analyses revealed that 40% of the eggshell, by weight, is calcium. Since total eggshell weight and total eggshell calcium were decreased in identical proportions, we have concluded that other eggshell constituents such as protein and carbonate may be altered as well.

LITERATURE CITED

1. Risebrough, R., Sibley, F., and Kirven, M. *Am. Birds.* 25 (1968).
2. Peakal, D. *Scientific American* 222, 72 (1970).
3. Prestt, I., Jefferies, D., and Moore, N. *Environ. Pollut.* 1, 3 (1970).
4. Blus, L., Heath, R., Gish, C., Belisle, A., and Prouty, A. *Science* 21, 1213
(1971).
5. Cooke, A. *Environ. Pollut.* 4, 85 (1973).
6. Blus, L., Burkett, S., Belisle, A., and Prouty, R. *Environ. Pollut.* 7, 81 (1974).
7. Bitman, J., Celcill, H., Harris, S., and Fries, G. *Nature* 224, 44 (1969).
8. Miller, D., Peakall, D., Kinter, W. *Fedn. Proc.* 34, 811 (1975).
9. Pike, W., and Alvarado, R. *Comp. Biochem. Physiol.* 513, 119 (1975).
10. Miller, D., Kinter, W., and Peakall, D. *Nature* 259, 122 (1976).
11. Ratcliffe, D. *Nature* 215, 208 (1967).
12. Hayatt, M. *Principles and Techniques of Electron Microscopy*, Vol 1, pp. 5-105.
Van Nostrand Reinhold Company, New York, New York. 1970.
13. Rorive, G., and Kleinzeller, A. *Methods of Enzymology* 33, 303 (1974).
14. Stanton, M. *Analyt. Biochem.* 22, 27 (1968).
15. Lowry, O., Rosebrough, N., Farr, A., and Randall, R. J. *J. Biol. Chem.* 193, 265
(1951).
16. Kopito, L. *Atomic Absorption Methods Manual*, Fisher Scientific Co., Vol. III
(1970).

DISTRIBUTION LIST 5

Names	Copies	Names	Copies
EDGEWOOD ARSENAL		DIRECTOR OF TECHNICAL SUPPORT	
FOREIGN INTELLIGENCE OFFICER	1	Attn: SAREA-TS-R	2
CHIEF, LEGAL OFFICE	1	Attn: SAREA-TS-L	3
CHIEF, SAFETY OFFICE	1	Attn: SAREA-TS-E	1
CHIEF, PLANS OFFICE		DEPARTMENT OF DEFENSE	
Attn: SAREA-PL-S	7	Administrator	
CDR, US ARMY TECHNICAL ESCORT CENTER	1	Defense Documentation Center	
AUTHOR'S COPY, Biomedical Laboratory	7	Attn: Accessions Division	12
BIOMEDICAL LABORATORY		Cameron Station	
Attn: SAREA-BL	1	Alexandria, VA 22314	
Attn: SAREA-BL-Q	1	US ARMY TEST & EVALUATION COMMAND	
Attn: SAREA-BL-V	1	Record Copy	
CHEMICAL LABORATORY		CDR, APG	
Attn: SAREA-CL	1	Attn: STEAP-AD-R/RHA	1
Attn: SAREA-CL-P	1	APG-Edgewood Area, Bldg E5179	
Attn: SAREA-CL-TE	1	CDR, APG	
DEVELOPMENT AND ENGINEERING DIRECTORATE		Attn: STEAP-TL	1
Attn: SAREA-DE-D	1	APG-Aberdeen Area	
Attn: SAREA-DE-DB	1	ADDITIONAL ADDRESSEE	
Attn: SAREA-DE-EP	1	US Environmental Pollution Agency	
MANUFACTURING TECHNOLOGY DIRECTORATE		Solid & Hazardous Waste Research Division	2
Attn: SAREA-MT-D	1	Municipal Environmental Research Laboratory	
Attn: SAREA-MT-P	1	Cincinnati, Ohio 45268	
DIRECTOR OF PRODUCT ASSURANCE			
Attn: SAREA-PA-A	1		
Attn: SAREA-PA-P	1		
Attn: SAREA-PA-Q	1		