

AD-A040 360

FEDERAL AVIATION ADMINISTRATION WASHINGTON D C OFFICE--ETC F/G 1/2
MILITARY AIR TRAFFIC ACTIVITY REPORT, (U)
1975 B V CAYCE

UNCLASSIFIED

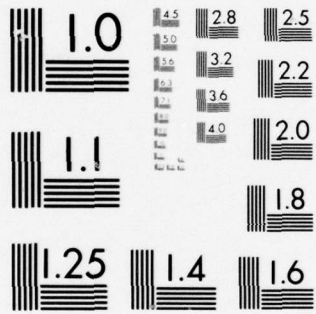
NL

| OF |

AD
A040360



END
DATE
FILMED
7-77



MICROCOPY RESOLUTION TEST CHART
NATIONAL BUREAU OF STANDARDS-1963-A

AD No. _____
DDC FILE COPY

ADA 040360

DISSEMINATION STATEMENT A
Approved for public release;
Distribution Unlimited

DDC
JUN 8 1977
B

(4)

FOREWORD

The Military/Air Traffic Activity Reports prepared as a document for Federal Aviation Administration personnel who have an operational interest in activity generated at military installations. The data presented in the tabulations were compiled from the following sources:

1. **AIR FORCE** — USAF Air Traffic Control — Summary of Quarterly Air Traffic Control Reports, Department of the Air Force, Headquarters, Air Force Communications.
2. **ARMY** — Summary of Air Traffic Activity Count, Department of the Army, U.S. Army Aeronautical Service Office.
3. **NAVY** — Air Traffic Activity Reports (OPNAV Form 3721/12) submitted by U.S. Naval Aeronautical Facilities.

Every attempt has been made to achieve a high degree of comparability in the activity data presented for the three branches of the Department of Defense. Users of this publication must exercise care, however, when combining the figures of the three military departments to obtain overall totals for military air traffic activity due to differences in the definitions of terms used by each of the departments.

Suggestions from users for improving either the scope, presentation, or utility of this report are invited. It will also be appreciated if discrepancies and errors in the data are called to the attention of the Information and Statistics Division of the Office of Management Systems.

The Glossary has been furnished to provide users of this report with the current definitions of terms used by the Air Force, Army, and Navy. For additional definitions of terms used by the Federal Aviation Administration, see "FAA Air Traffic Activity, Calendar Year 1975."

This report was prepared in the Office of Management Systems, Information and Statistics Division, Information and Service Branch, by Betty V. Cayce

10 11 1975 12 36 P.

403600

White Section

Dist Section

BY _____

DISTRIBUTION/AVAILABILITY CODES

FILE A

AVAIL. DATE/OF SPECIAL

CONTENTS

Table	Page
Air Force Bases	
1. Air Traffic Activity at U.S. Air Force Bases in the United States of America: Calendar Year 1975	1
2. Air Traffic Activity at U.S. Air Force Bases Overseas: Calendar Year 1975	7
Army Airfields	
3. IFR and VFR Air Traffic Activity at U.S. Army Airfields in the United States of America: Calendar Year 1975	11
4. IFR and VFR Air Traffic Activity at U.S. Army Airfields Overseas: Calendar Year 1975	15
5. VFR Air Traffic Activity at U.S. Army Airfields in the United States of America: Calendar Year 1975	19
6. VFR Air Traffic Activity at U.S. Army Airfields Overseas: Calendar Year 1975	23
Naval Aeronautical Facilities	
7. Instrument and VFR Flight Operations, Instrument Approaches, and Automatic Carrier Landing System Approaches Reported by U.S. Naval Aeronautical Facilities in the United States of America: Calendar Year 1975	27
8. Instrument and VFR Flight Operations, Instrument Approaches, and Automatic Carrier Landing System Approaches Reported by U.S. Naval Aeronautical Facilities Overseas: Calendar Year 1975	31
Glossary	33

DISTRIBUTION: ZMS-411; ZMS-348H; FAT-0 (One Copy Only)

Table 1. Air Traffic Activity at U.S. Air Force Bases in the United States of America
Calendar Year 1975

Air Force Base and Location	Type of Activity				
	Control Tower Operations			Total Terminal Radar**	Total Runway Supervisory Unit**†
	Total	Military	Civil		
Total - Worldwide	8,654,577	7,462,382	1,192,195	4,462,942	2,392,839
Total - United States	7,159,409	6,126,654	1,032,755	3,548,775	2,392,839
Air Force Academy	208,991	175,623	33,368	---	---
Altus	90,685	82,810	7,875	67,484	---
Altus Muni	42,239	---	42,239	---	---
Barksdale	90,339	81,428	8,911	15,673	---
Beale	86,773	84,062	2,711	14,339	---
Bergstrom	101,403	87,060	14,343	15,014	---
Blytheville	69,688	66,601	3,087	45,634	---
Brackettville	---	---	---	5,407	---
Buckley	62,831	34,207	28,624	6,697	---
Campbell	125,851	119,490	6,361	23,295	---
Cannon	68,984	67,182	1,802	49,782	---
Carswell	75,637	58,793	16,844	16,153	---
Castle	79,102	77,946	1,156	89,879	---
Clinton Sherman	42,994	19,579	23,415	---	---
Colorado City	---	---	---	---	58,725
Columbus	93,400	92,422	978	110,911	112,494
Craig	47,297	46,884	413	129,244	197,467
Davis-Monthan	182,294	169,799	12,495	8,596	---
Dobbins	72,164	60,612	11,552	7,679	---
Dover	74,153	70,869	3,284	66,627	---

Table 1. Air Traffic Activity at U.S. Air Force Bases in the United States of America (cont)
Calendar Year 1975

	Air Force Base and Location	Type of Activity				
		Control Tower Operations		Total Terminal Radar**	Total Runway Supervisory Unit**†	
		Total	Military			Civil
Duke	Eglin Field #3, Fla.	18,513	15,106	3,407	---	---
Duluth	Duluth, Minn.	---	---	---	4,590	---
Dyess	Abilene, Tex.	72,856	70,384	2,472	11,364	---
Eagle Pass	Laughlin AFB, Del Rio, Tex.	---	---	---	---	43,241
Edwards	Muroc, Ca.	100,239	72,178	28,061	---	---
Eglin	Valparaiso, Fla.	104,248	77,476	26,772	117,390	---
Eielson	Fairbanks, Alaska	57,613	40,489	17,124	---	---
Ellington	Houston, Tex.	81,961	58,525	23,436	7,090	---
Ellsworth	Rapid City, S.D.	36,845	35,261	1,584	49,789	---
Elmendorf	Anchorage, Alaska	150,495	118,623	31,872	---	---
England	Alexandria, La.	64,491	56,366	8,125	54,517	---
Esler	England AFB, Alexandria, La.	12,492	1,046	11,446	---	---
Fairchild	Spokane, Wash.	48,924	47,241	1,683	7,949	---
Forence Coolidge	Williams AFB, Phoenix, Ariz.	---	---	---	---	51,806
Forbes	Topeka, Kans.	19,796	16,773	3,023	---	---
Fort Hood	Killeen, Tex.	---	---	---	50,472	---
Frederick	Frederick, Okla.	---	---	---	4,329	46,094
Galena	Galena, Alaska	23,085	2,864	20,221	4,187	---
George	San Bernardino, Ca.	123,079	119,937	3,142	25,952	---
Gila Bend	Maricopa, Ariz.	11,910	11,775	135	---	---
Glasgow	Glasgow, Mont.	1,648	878	770	---	---
Goodfellow	San Angelo, Tex.	---	---	---	6,655	---
Grand Forks	Grand Forks, N.D.	31,008	26,700	4,308	44,539	---

Table 1. Air Traffic Activity at U.S. Air Force Bases in the United States of America (cont)
Calendar Year 1975

Air Force Base and Location	Type of Activity				
	Control Tower Operations			Total Terminal Radar**	Total Runway Supervisory Unit***†
	Total	Military	Civil		
Griffiss	59,011	55,724	3,287	10,332	---
Grissom	51,997	45,612	6,385	53,874	---
Hamilton	60,571	27,430	33,141	31,625	---
Hennessey	---	---	---	7,248	---
Hill	104,368	96,481	7,887	8,385	---
Holloman	145,429	142,281	3,148	73,904	---
Homestead	86,570	80,472	6,098	28,786	---
Hurlburt	67,496	66,990	506	4,671	---
Indian Springs	25,182	24,981	201	---	---
K. I. Sawyer	35,836	34,719	1,117	35,602	---
Keesler	41,856	10,416	31,440	3,524	---
Kelgelman	---	---	---	---	56,637
Kelly	131,329	125,915	5,414	28,297	---
Kincheloe	21,294	19,935	1,359	28,851	---
King Salmon	---	---	---	6,421	---
Langley	98,082	82,217	15,865	15,374	---
Laughlin	70,881	70,576	305	138,781	239,297
Little Rock	143,627	139,054	4,573	23,882	---
Loring	33,084	31,867	1,217	26,238	---
Luke 1	130,771	129,938	833	18,760	---
Luke 2	---	---	---	15,209	---
MacDill	95,418	90,370	5,048	18,545	---
Malmstrom	27,066	25,667	1,399	3,764	---

Table 1. Air Traffic Activity at U.S. Air Force Bases in the United States of America (cont)
Calendar Year 1975

Air Force Base and Location	Type of Activity					
	Control Tower Operations			Total Terminal Radar**	Total Runway Supervisory Unit**†	
	Total	Military	Civil			
March	42,596	39,749	2,847	12,545	---	
Marion County	---	---	---	7,682	20,065	
Martin County	---	---	---	6,100	---	
Martinsburg	25,161	8,353	16,808	---	---	
Mather	88,992	85,223	3,769	20,647	---	
Maxwell	78,132	71,519	6,613	---	---	
McChord	60,452	58,003	2,449	9,660	---	
McClellan	76,145	67,005	9,140	10,929	---	
McConnell	88,942	58,999	29,943	19,310	---	
McGuire	102,828	83,738	19,090	113,610	---	
Minot	40,010	38,669	1,341	32,885	---	
Moody	56,814	55,944	870	109,872	158,201	
Mountain Home	64,398	63,335	1,063	42,998	---	
Myrtle Beach	69,486	60,483	9,003	84,628	---	
Nellis	86,807	85,431	1,376	9,319	---	
Norton	51,788	29,837	21,951	11,220	---	
Offutt	48,027	38,087	9,940	9,587	---	
Oris	---	---	---	1,290	---	
Patrick	47,734	27,133	20,601	83,380	---	
Pease	56,120	51,594	4,526	54,636	---	
Phelps Collins	11,061	6,444	4,617	1,607	---	
Plattsburgh	79,857	57,785	22,072	25,663	---	
Pope	137,553	136,932	621	32,088	---	

Table 1. Air Traffic Activity at U.S. Air Force Bases in the United States of America (cont)
 Calendar Year 1975

Air Force Base and Location	Type of Activity				
	Control Tower Operations			Total Terminal Radar**	Total Runway Supervisory Unit***†
	Total	Military	Civil		
Randolph	211,637	201,038	10,599	41,993	1,216
Reese	76,537	76,092	445	25,299	211,587
Richard Gebaur	48,948	37,981	10,967	18,050	---
Rickenbacker	83,852	82,925	927	29,043	---
Rittenhouse	---	---	---	4,791	---
Robbins	82,736	72,721	10,015	21,512	---
Scott	63,634	45,962	17,672	53,209	---
Sequin	---	---	---	---	74,052
Selfridge	57,564	51,130	6,434	44,552	---
Seymour Johnson	77,264	70,599	6,665	82,251	---
Shaw	108,232	98,853	9,379	87,005	---
Shemya	1,632	993	639	1,170	---
Sheppard	136,931	91,334	45,597	140,025	117,823
Spence	---	---	---	3,403	29,674
Springfield	33,158	11,815	21,343	---	---
Terry County	---	---	---	---	---
Tinker	73,738	64,401	9,337	4,219	42,805
Travis	94,049	83,715	10,334	11,387	---
Tyndall	137,146	131,698	5,448	141,118	---
Vaiden	---	---	---	86,394	---
Vance	61,882	61,087	795	2,279	29,078
Vandenbergh	26,402	19,846	6,556	163,409	276,650
Webb	89,744	88,230	1,514	28,225	---
				137,889	267,811

Table 1. Air Traffic Activity at U.S. Air Force Bases in the United States of America (cont)
 Calendar Year 1975

Air Force Base and Location	Type of Activity				
	Control Tower Operations			Total Terminal Radar**	Total Runway Supervisory Unit**†
	Total	Military	Civil		
Westheimer	99,868	6,330	93,538	---	---
Westover	40,580	32,773	7,807	22,929	---
Whiteman	27,280	20,147	7,133	---	---
Williams	85,708	85,387	321	17,813	358,116
Wright-Patterson	94,020	70,888	23,132	16,009	---
Wurtsmith	23,266	22,010	1,256	21,576	---
U.S. Mobile Deployments*	6,802	6,802	---	259	---

*Included in grand totals.

**Includes military and civil.

†Aircraft in terminal area — not under tower control.

Source: United States Air Force Air Traffic Control Report, Department of the Air Force, Headquarters, Air Force Communications Service.

Table 2. Air Traffic at U.S. Air Force Bases Overseas
Calendar Year 1975

Air Force Base and Location	Type of Activity				
	Control Tower Operations			Total Terminal Radar**	Total Runway Supervisory Unit**f
	Total	Military	Civil		
Total - Worldwide	8,654,577	7,462,382	1,192,195	4,462,942	2,392,839
Total - Overseas	1,495,168	1,335,728	159,440	914,167	---
Belgium					
Chievres	6,961	4,455	2,506	1,204	---
Canada					
Goose Bay	---	---	---	1,426	---
Canal Zone					
Howard	31,581	30,807	774	3,826	---
Germany					
Bitburg	46,258	45,506	752	11,403	---
Hahn	36,988	36,831	157	14,817	---
Ramstein	86,035	74,491	11,544	60,340	---
Sembach	396	390	6	29	---
Spangdahlem	41,574	31,119	10,455	60,410	---
Greenland					
Sondrestrom	11,100	1,746	9,354	1,520	---
Thule	3,301	2,724	577	2,340	---
Other					
Tempelhof	36,574	3,702	32,872	62,896	---
Wiesbaden	26,130	24,402	1,728	3,960	---
Zweibrucken	27,250	26,878	372	8,672	---

Table 2. Air Traffic at U.S. Air Force Bases Overseas (cont)
 Calendar Year 1975

Air Force Base and Location	Type of Activity				
	Control Tower Operations			Total Terminal Radar**	Total Runway Supervisory Unit**†
	Total	Military	Civil		
Guam					
Andersen	32,894	27,462	5,432	---	---
Italy					
Aviano	29,599	29,137	462	9,572	---
Japan					
Johnston Island	992	304	688	---	---
Yokota	33,343	30,039	3,304	70,313	---
Korea					
Kunsan	45,967	42,235	3,732	31,200	---
Osan	124,548	110,566	13,982	79,390	---
Okinawa					
Kadena	109,559	107,920	1,639	123,402	---
Philippine Islands					
Clark	113,554	109,110	4,444	65,769	---
Portugal					
Lajes	17,070	13,808	3,262	11,828	---
Spain					
Moron	12,544	12,504	40	---	---
Torrejon	72,439	58,421	14,018	19,331	---
Zaragoza	68,065	54,631	13,434	13,515	---

Table 2. Air Traffic at U.S. Air Force Bases Overseas (cont)
 Calendar Year 1975

Air Force Base and Location	Type of Activity				
	Control Tower Operations			Total Terminal Radar**	Total Runway Supervisor Unit**†
	Total	Military	Civil		
Taiwan					
Ching Chuan	26,067	26,006	61	24,591	---
Thailand					
Korat	66,672	66,319	353	32,889	---
Nak Phanom	43,217	42,641	576	15,141	---
U Tapao	43,984	43,433	551	30,850	---
Ubon	1,202	567	635	---	---
Udorn	90,688	88,756	1,932	46,523	---
Turkey					
Incirklik	30,925	27,175	3,750	5,089	---
United Kingdom					
Alconbury	28,139	28,083	56	12,227	---
Bentwaters	24,922	24,632	290	21,109	---
Lakenheath	44,187	35,122	9,065	26,687	---
Mildenhall	19,773	19,127	646	7,762	---
Upper Heyford	25,679	25,313	366	26,923	---
Woodbridge	32,142	26,639	5,503	6,199	---
Wake Island					
	442	413	29	---	---
Mobile Deployments - Europe *	2,407	2,314	93	1,014	---

* Included in grand totals.

** Includes military and civil.

† Aircraft in terminal area — not under tower control.

Source: United States Air Traffic Control Report, Department of the Air Force, Headquarters, Air Force Communications Service.

Table 3. IFR and VFR Air Traffic Activity at U.S. Army Airfields in the United States of America
Calendar Year 1975

Army Airfield and Location	Total	Type of Operation					
		Local			Itinerant		
		Total	Military	Civil	Total	Military	Civil
Total - Worldwide	6,439,680	5,450,890	4,724,069	726,821	988,790	753,528	235,262
Total - United States	5,125,952	4,546,845	3,911,831	635,014	579,107	358,519	220,588
Aberdeen Proving Ground	26,348	22,611	14,223	8,388	3,737	2,469	1,268
Aberdeen Proving Ground	12,913	12,638	2,039	10,599	275	245	30
Bradshaw AAF	11,514	10,644	10,644	---	870	870	---
Camp MackKall	32,172	32,172	32,172	---	99	99	---
Camp San Luis Obispo	193	94	94	---	99	99	---
Dugway Proving Ground	15,425	13,826	13,683	143	1,599	1,509	90
Fort Belvoir	85,435	81,498	70,427	11,071	3,937	3,783	154
Fort Benning	80,813	70,092	47,451	22,641	10,721	9,683	1,038
Fort Bliss	108,540	102,913	73,100	29,813	5,627	5,507	120
Fort Bragg	180,234	170,885	133,655	37,230	9,349	8,399	950
Fort Campbell*	176,165	159,107	152,836	6,271	17,058	17,058	---
Fort Carson	137,489	116,481	81,135	35,346	21,008	10,623	10,385
Fort Detrick	29	---	---	---	29	29	---
Fort Devens	17,703	13,090	12,988	102	4,613	1,345	3,268
Fort Drum	30,804	27,728	27,426	302	3,076	3,003	73
Fort Eustis	78,307	68,185	68,068	117	10,122	8,394	1,728
Fort Hood	323,976	305,100	305,099	1	18,876	18,867	9
Fort Hood	112,324	104,026	102,773	1,253	8,298	7,834	464

Table 3. IFR and VFR Air Traffic Activity at U.S. Army Airfields in the United States of America (cont)
Calendar Year 1975

Army Airfield and Location	Type of Operation							
	Total	Local			Itinerant			
		Total	Military	Civil	Total	Military	Civil	
Fort Huachuca	66,151	34,675	20,076	14,599	31,476	5,702	25,774	
Fort Hunter-Liggett	4,256	2,212	2,212	---	2,044	1,980	64	
Fort Indiantown Gap	28,165	25,526	25,516	10	2,639	2,492	147	
Fort Irwin	7,541	6,095	6,089	6	1,446	1,402	44	
Fort Knox	107,603	97,664	76,741	20,923	9,939	7,106	2,833	
Fort Leavenworth	48,198	38,604	5,809	32,795	9,594	1,636	7,958	
Fort Lee	598	446	446	---	152	152	---	
Fort Leonard Wood	35,798	21,723	4,788	16,935	14,075	2,366	11,709	
Fort Lewis	200,632	195,566	150,630	44,936	5,066	4,155	911	
Fort McCoy	14,936	9,677	9,677	---	5,259	5,220	39	
Fort Meade	85,904	78,943	38,509	40,434	6,961	5,637	1,324	
Fort Ord	52,756	45,772	30,199	15,573	6,984	1,956	5,028	
Fort Polk	123,616	70,142	41,568	28,574	53,474	32,469	21,005	
Fort Richardson	130,973	69,242	23,750	45,492	61,731	21,701	40,030	
Fort Riley	67,278	62,130	47,532	14,598	5,148	1,901	3,247	
Fort Rucker	137,046	137,046	137,046	---	---	---	---	
Fort Rucker	113,805	57,065	57,065	---	56,740	28,413	28,327	
Fort Rucker†	3,321	3,321	3,104	217	---	---	---	
Fort Rucker	244,822	237,221	230,870	6,351	7,601	7,032	569	
Fort Rucker	20,725	20,725	20,725	---	---	---	---	
Fort Rucker	92,226	92,226	92,226	---	---	---	---	
Fort Rucker	5,255	5,255	5,255	---	---	---	---	

Table 3. IFR and VFR Air Traffic Activity at U.S. Army Airfields in the United States of America (cont)
 Calendar Year 1975

Army Airfield and Location	Total	Type of Operation						
		Local			Itinerant			
		Total	Military	Civil	Total	Military	Civil	
Fort Rucker	68,402	68,402	68,402	---	---	---	---	---
Fort Rucker	74,772	74,772	74,772	---	---	---	---	---
Fort Rucker	104,066	104,066	104,077	---	---	---	---	---
Fort Rucker	82,540	82,540	82,540	---	---	---	---	---
Fort Rucker	192,611	192,611	192,611	---	---	---	---	---
Fort Rucker	107,945	107,945	107,945	---	---	---	---	---
Fort Rucker	57,435	57,435	57,435	---	---	---	---	---
Fort Rucker	153,113	149,070	149,070	---	---	4,043	---	---
Fort Rucker	225,032	225,032	225,032	---	---	---	---	---
Fort Rucker	3,454	3,454	3,454	---	---	---	---	---
Fort Rucker	69,126	69,126	69,126	---	---	---	---	---
Fort Rucker**	22,482	22,482	22,482	---	---	---	---	---
Fort Rucker	111,601	111,601	111,601	---	---	---	---	---
Fort Rucker	36,351	36,351	31,089	5,262	---	---	---	---
Fort Sam Houston	9,030	6,853	6,853	---	---	2,177	2,177	---
Fort Sheridan	4,887	3,038	3,020	18	---	1,849	1,783	66
Fort Sill	299,392	172,758	133,363	39,395	---	126,634	87,699	38,935
Fort Stewart	28,122	25,988	23,459	2,529	---	2,134	1,729	405
Fort Stewart	27,568	25,006	22,179	2,827	---	2,562	2,327	235
Fort Wainwright	102,693	93,659	48,105	45,554	---	9,034	2,412	6,622
Grand Prairie Lexington-Blue Grass	15,387 722	15,343 470	15,343 470	---	---	44 252	44 250	---

Table 3. IFR and VFR Air Traffic Activity at U.S. Army Airfields in the United States of America (cont)
Calendar Year 1975

Army Airfield and Location	Total	Type of Operation				Itinerant		
		Local			Total	Military	Civil	
		Total	Military	Civil				
Los Alamitos NAS	50,034	48,614	31,331	17,283	1,420	1,420	---	
ARNG								
Johnson County Arpt.	2,177	2,158	2,158	---	19	19	---	
Pentagon	4,326	3,072	3,072	---	1,254	1,056	198	
Red River Army Depot	110	---	---	---	110	110	---	
Redstone Arsenal	14,594	11,016	4,651	6,365	3,578	2,033	1,545	
Sacramento Army Depot	478	478	478	---	---	---	---	
Seneca Army Depot	789	443	400	43	346	289	57	
Sharpe Army Depot	10,203	10,062	8,549	1,513	141	141	---	
Sierra Army Depot	336	---	---	---	336	330	6	
Texas ARNG	22,664	19,259	12,749	6,510	3,405	3,405	---	
Wheeler AFB	165,167	160,244	101,679	58,565	4,923	4,015	908	
White Sands Missile Range	7,502	6,508	2,156	4,352	994	695	299	
Yakima Firing Center	14,440	8,902	8,894	8	5,538	3,421	2,117	
Yuma Proving Ground	14,412	5,721	5,651	70	8,691	8,084	607	

* Includes Sabre and Eagle AHP.
 † Stagefield closed 15 March 1975.
 ** Stagefield closed 3 March 1975.
 Source: Summary of Air Traffic Activity Count, Department of the Army, U.S. Army Aeronautical Service Office.

Table 4. IFR and VFR Air Traffic Activity at U.S. Army Airfields Overseas
Calendar Year 1975

Army Airfield and Location	Total	Type of Operation				Type of Operation				
		Local				Itinerant				
		Total	Military	Civil	Total	Military	Civil	Total	Military	Civil
Total - Worldwide	6,439,680	5,450,890	4,724,069	726,821	988,790	753,528	235,262			
Total - Overseas	1,313,728	904,045	812,238	91,807	409,683	395,009	14,674			
Canal Zone										
Albrook AAF	13,576	13,133	13,133	---	443	435	8			
England										
Burtonwood AAF	318	194	194	---	124	124	---			
Germany										
Amberg AAF	206	104	104	---	102	98	4			
Ansbach AHP	80,950	60,839	60,839	---	20,111	19,254	857			
Aschaffenburg AAF	1,101	808	808	---	293	293	---			
Babenhausen AAF	6,873	6,598	6,598	---	275	275	---			
Bad Hersfeld AAF	767	592	368	224	175	175	---			
Bad Kissingen AAF	1,072	563	563	---	509	509	---			
Bad Kreuznach AAF	6,835	3,053	3,053	---	3,782	3,776	6			
Bad Tolz AAF	10,321	8,694	5,486	3,208	1,627	1,564	63			
Bamberg AAF	12,027	10,926	3,239	7,687	1,101	562	539			
Baumholder AAF	13,887	10,010	10,010	---	3,877	3,877	---			
Bayreuth AAF	2,137	1,208	1,208	---	929	929	---			
Buedingen AHP	4,087	3,246	3,246	---	841	841	---			
Coleman AAF	135,554	118,964	116,645	2,319	16,590	9,871	6,719			
Darmstadt AAF	2,859	1,494	1,400	94	1,365	1,365	---			
Emery AAF	10,085	9,782	550	9,232	303	303	---			

Table 4. IFR and VFR Air Traffic Activity at U.S. Army Airfields Overseas (cont)
Calendar Year 1975

Army Airfield and Location	Total	Type of Operation				Itinerant		
		Local			Total	Military	Civil	
		Total	Military	Civil				
Germany (cont)								
Erlangen AAF	640	378	378	---	262	260	2	
Feucht AAF	30,145	24,658	24,629	29	5,487	5,473	14	
Finthen AAF	45,936	44,275	37,966	6,309	1,661	1,595	66	
Friedberg AAF	4,012	4,012	2,129	1,883	---	---	---	
Furth AHP	1,882	1,299	1,299	---	583	577	6	
Fulda AAF	46,603	39,065	38,786	279	7,538	7,484	54	
Giessen AHP	1,849	1,106	1,106	---	743	743	---	
Goepfingen AAF	9,209	7,440	7,440	---	1,769	1,740	29	
Grafenwoehr AAF	21,866	14,527	14,522	5	7,339	7,325	14	
Hanau AAF	38,749	32,668	18,508	14,160	6,081	5,959	122	
Heidelberg AAF	34,000	20,281	18,442	1,839	13,719	11,882	1,837	
Heilbronn AHP	1,016	530	530	---	486	486	---	
Herzo AHP	1,239	1,239	1,239	---	---	---	---	
Hohenfels AAF	34,384	30,973	30,973	---	3,411	3,411	---	
Illeshheim AAF	23,370	20,128	20,128	---	3,242	3,242	---	
Kirchgoens AHP	5,328	4,709	4,709	---	619	619	---	
Kitzingen AAF	62,306	42,003	34,041	7,962	20,303	20,096	207	
Landstuhl AHP	1,564	295	295	---	1,269	1,269	---	
Ludwigsbuurg AAF	12,085	10,280	1,334	8,946	1,805	1,432	373	
Maurice Rose AAF	12,987	8,475	8,459	16	4,512	4,453	59	
Nellingen AHP	5,391	2,413	2,413	---	2,978	2,978	---	
Pirmasens AHP	10,614	8,439	8,439	---	2,175	2,173	2	

Table 4. IFR and VFR Air Traffic Activity at U.S. Army Airfields Overseas (cont)
Calendar Year 1975

Army Airfield and Location	Total	Type of Operation				Itinerant		
		Local			Total	Itinerant		Civil
		Total	Military	Civil		Military	Civil	
Germany (cont)								
Schwaebisch Gmund AAF	4,464	3,152	3,152	---	1,312	1,312	---	---
Schwaebisch Hall AAF	37,670	25,346	17,991	7,355	12,324	11,131	1,193	---
Schweinfurt AAF	1,675	1,141	1,141	---	534	534	---	---
Stuttgart AAF*	7,371	375	375	---	6,996	6,996	---	---
Ulm AAF	6,660	6,267	731	5,536	393	393	---	---
Vilsack AAF	3,704	2,483	1,173	1,310	1,221	957	264	---
Wertheim AAF	8,624	8,083	8,079	4	541	534	7	---
Wildflecken AAF	550	---	---	---	550	550	---	---
Japan								
Rankin AAF	24,565	16,300	16,380	---	8,185	8,179	6	---
Korea								
A-306	27,472	19,548	15,439	109	7,924	7,799	125	---
A-511	108,630	44,432	41,290	3,142	64,198	63,096	1,102	---
A-805	39,416	23,859	23,859	---	15,557	15,526	31	---
H-112	25,701	18,569	18,569	---	7,132	7,132	---	---
H-201	33,425	---	---	---	33,425	33,425	---	---
H-207	21,918	14,697	14,697	---	7,221	7,221	---	---
H-210	23,792	9,736	9,736	---	14,056	14,056	---	---
H-220	57,530	34,007	34,007	---	23,523	23,523	---	---
Seoul Air Base	2,395	2,395	2,356	39	---	---	---	---
Tirtact	2,300	1,962	1,962	---	338	324	14	---
FOC North	68,147	55,205	55,205	---	12,942	12,942	---	---

Table 4. IFR and VFR Air Traffic Activity at U.S. Army Airfields Overseas (cont)
Calendar Year 1975

Army Airfield and Location	Total	Type of Operation				Itinerant		
		Local			Total	Military	Civil	
		Total	Military	Civil				
Korea (cont)								
FOC South	49,360	37,215	34,955	2,260	12,145	12,145	---	---
Brooklyn FCC	2,976	1,360	1,360	---	1,616	1,614	2	---
Evereach FCC	4,340	83	83	---	4,257	4,257	---	---
Richmond FCC	2,358	---	---	---	2,358	2,358	---	---
Warrior FCC	19,989	---	---	---	19,989	19,989	---	---
Marshall Islands								
Buchholz AAF	20,490	8,001	141	7,860	12,489	11,540	949	---
Turkey								
Sinop AAF	376	348	348	---	28	28	---	---

*Report is not for full year.
Source: Summary of Air Traffic Activity Count, Department of the Army, U.S. Army Aeronautical Service Office.

Table 5. VFR Air Traffic Activity at U.S. Army Airfields in the United States of America
Calendar Year 1975

Army Airfield and Location	Total	Type of Operation				Total	Itinerant	
		Local			Total		Military	Civil
		Total	Military	Civil				
Total - Worldwide	5,741,362	4,930,417	4,265,140	665,277	810,945	643,444	167,501	
Total - United States	4,481,566	4,057,018	3,482,000	575,018	424,548	269,513	155,035	
Aberdeen Proving Ground	25,455	22,485	14,139	8,346	2,970	1,817	1,153	
Aberdeen Proving Ground	12,743	12,500	1,901	10,599	243	213	30	
Bradshaw AAF	11,514	10,644	10,644	---	870	870	---	
Camp Mackall	32,166	32,166	32,166	---	---	---	---	
Camp San Luis Obispo	193	94	94	---	99	99	---	
Dugway Proving Ground	15,307	13,822	13,679	143	1,485	1,405	80	
Fort Belvoir	79,107	77,118	66,134	10,984	1,989	1,863	126	
Fort Benning	68,974	64,750	42,451	22,299	4,224	3,529	695	
Fort Bliss	101,398	99,584	69,984	29,600	1,814	1,714	100	
Fort Bragg	175,004	168,965	131,745	37,220	6,039	5,419	620	
Fort Campbell*	158,486	142,624	136,540	6,084	15,862	15,862	---	
Fort Carson	136,808	116,313	81,065	35,248	20,495	10,169	10,326	
Fort Detrick	29	---	---	---	29	29	---	
Fort Devens	16,765	12,391	12,305	86	4,374	1,126	3,248	
Fort Drum	30,490	27,688	27,386	302	2,802	2,731	71	
Fort Eustis	77,060	68,014	67,900	114	9,046	7,380	1,666	
Fort Hood	314,910	300,982	300,982	---	13,928	13,924	4	
Fort Hood	97,111	92,182	91,283	899	4,929	4,558	371	

Table 5. VFR Air Traffic Activity at U.S. Army Airfields in the United States of America (cont)
Calendar Year 1975

Army Airfield and Location	Type of Operation							
	Total	Local			Itinerant			
		Total	Military	Civil	Total	Military	Civil	
Fort Huachuca	65,380	34,296	19,711	14,585	31,084	5,422	25,662	
Fort Hunter-Liggett	4,256	2,212	2,212	---	2,044	1,980	64	
Fort Indiantown Gap	27,597	25,077	25,067	10	2,520	2,382	138	
Fort Irwin	7,529	6,095	6,089	6	1,434	1,390	44	
Fort Knox	104,806	96,799	75,878	20,921	8,007	5,305	2,702	
Fort Leavenworth	46,721	38,107	5,439	32,668	8,614	874	7,740	
Fort Lee	598	446	446	---	152	152	---	
Fort Leonard Wood	30,768	21,403	4,519	16,884	9,365	1,669	7,696	
Fort Lewis	187,171	183,386	140,130	43,256	3,785	3,691	94	
Fort McCoy	14,629	9,677	9,677	---	4,952	4,913	39	
Fort Meade	83,919	78,943	38,509	40,434	4,976	3,880	1,096	
Fort Ord	48,130	42,277	26,967	15,310	5,853	1,447	4,406	
Fort Polk	105,365	65,136	38,977	26,159	40,229	30,324	9,905	
Fort Richardson	130,787	69,201	23,712	45,489	61,586	21,579	40,007	
Fort Riley	65,374	61,072	46,576	14,496	4,302	1,492	2,810	
Fort Rucker	137,046	137,046	137,046	---	---	---	---	
Fort Rucker	---	---	---	---	---	---	---	
Fort Rucker†	3,319	3,319	3,104	215	---	---	---	
Fort Rucker	20,725	20,725	20,725	---	---	---	---	
Fort Rucker	92,226	92,226	92,226	---	---	---	---	
Fort Rucker	5,255	5,255	5,255	---	---	---	---	

Table 5. VFR Air Traffic Activity at U.S. Army Airfields in the United States of America (cont)
 Calendar Year 1975

Army Airfield and Location	Total	Type of Operation				Itinerant		
		Local		Total	Military	Civil		
		Total	Military					
Fort Rucker	68,402	68,402	68,402	---	---	---	---	---
Fort Rucker	74,748	74,748	74,748	---	---	---	---	---
Fort Rucker	104,066	104,066	104,066	---	---	---	---	---
Fort Rucker	82,540	82,540	82,540	---	---	---	---	---
Fort Rucker	192,611	192,611	192,611	---	---	---	---	---
Fort Rucker	107,945	107,945	107,945	---	---	---	---	---
Fort Rucker	57,435	57,435	57,435	---	---	---	---	---
Fort Rucker	148,230	144,570	144,570	---	3,660	---	3,660	---
Fort Rucker	224,586	224,586	224,586	---	---	---	---	---
Fort Rucker	3,454	3,454	3,454	---	---	---	---	---
Fort Rucker	69,126	69,126	69,126	---	---	---	---	---
Fort Rucker**	22,482	22,482	22,482	---	---	---	---	---
Fort Rucker	111,601	111,601	111,601	---	---	---	---	---
Fort Rucker	28,951	28,951	24,620	4,331	---	---	---	---
Fort Sam Houston	8,254	6,277	6,277	---	1,977	---	1,977	---
Fort Sheridan	3,000	1,836	1,820	16	1,164	---	1,140	24
Fort Sill	277,678	167,472	128,344	39,128	110,206	---	81,254	28,952
Fort Stewart	26,795	25,401	22,922	2,479	1,394	---	1,042	352
Fort Stewart	25,563	24,267	21,461	2,806	1,296	---	1,146	150
Grand Prairie	15,387	15,343	15,343	---	44	---	44	---
Lexington-Blue Grass	722	470	470	---	252	---	250	2
Los Alamitos NAS	45,913	44,738	27,775	16,963	1,175	---	1,175	---
ARNG								

Table 5. VFR Air Traffic Activity at U.S. Army Airfields in the United States of America (cont)
Calendar Year 1975

Army Airfield and Location	Type of Operation							
	Total	Local			Itinerant			
		Total	Military	Civil	Total	Military	Civil	
Johnson County Arpt. Pentagon	1,953	1,934	1,934	19	19	---		
Red River Army Depot	4,278	3,054	3,054	1,224	1,027	197		
Redstone Arsenal	110	---	---	110	110	---		
Sacramento Army Depot.	11,997	10,629	4,378	6,251	786	582		
Seneca Army Depot	478	478	478	---	---	---		
Sierra Army Depot	477	388	359	29	74	15		
Texas ARNG	9,751	9,624	8,118	1,506	127	---		
Wheeler AFB	336	---	---	336	330	6		
White Sands Missile Range	22,530	19,125	12,615	6,510	3,405	---		
Yakima Firing Center	158,728	157,350	99,138	58,212	539	839		
Yuma Proving Ground	7,502	6,508	2,156	4,352	994	299		
	14,440	8,902	8,894	8	3,421	2,117		
	14,376	5,685	5,615	70	8,084	607		

*Includes Sabre and Eagle AHP.
 †Stagetfield closed 15 March 1975.
 **Stagetfield closed 3 March 1975.
 Source: Summary of Air Traffic Activity Count, Department of the Army, U.S. Army Aeronautical Service Office.

Table 6. VFR Air Traffic Activity at U.S. Army Airfields Overseas
Calendar Year 1975

Army Airfield and Location	Total	Type of Operation					
		Local			Itinerant		
		Total	Military	Civil	Total	Military	Civil
Total - Worldwide	1,741,362	4,930,417	4,265,140	665,277	810,945	643,444	167,501
Total - Overseas	1,259,796	873,399	783,140	90,259	386,397	373,931	12,466
Canal Zone							
Albrook AAF	13,046	12,800	12,800	---	246	240	6
England							
Burtonwood AAF	318	194	194	---	124	124	---
Germany							
Amberg AAF	206	104	104	---	102	98	4
Ansbach AHP	74,681	56,398	56,398	---	18,283	17,426	857
Aschaffenburg AAF	1,101	808	808	---	293	293	---
Babenhausen AAF	6,873	6,598	6,598	---	275	275	---
Bad Herfeld AAF	767	592	368	224	175	175	---
Bad Kissingen AAF	1,072	563	563	---	509	509	---
Bad Kreuznach AAF	6,835	3,053	3,053	---	3,782	3,776	6
Bad Tolz AAF	10,321	8,694	5,486	3,208	1,627	1,564	63
Bamberg AAF	12,027	10,926	3,239	7,687	1,101	562	539
Baumholder AAF	13,887	10,010	10,010	---	3,877	3,877	---
Bayreuth AAF	2,137	1,208	1,208	---	929	929	---
Buedingen AHP	4,087	3,246	3,246	---	841	841	---
Coleman AAF	129,645	114,725	112,427	2,298	14,920	8,313	6,607
Darmstadt AAF	2,859	1,494	1,400	94	1,365	1,365	---
Emery AAF	10,085	9,782	550	9,232	303	303	---

Table 6. VFR Air Traffic Activity at U.S. Army Airfields Overseas (cont)
Calendar Year 1975

Army Airfield and Location	Type of Operation							
	Total	Local			Itinerant			Civil
		Total	Military	Civil	Total	Military	Civil	
Germany (cont)								
Erlangen AAF	640	378	378	---	262	260	2	
Feucht AAF	25,867	21,500	21,475	25	4,367	4,355	12	
Finthen AAF	44,235	42,661	36,664	5,997	1,574	1,512	62	
Friedberg AAF	4,012	4,012	2,129	1,883	---	---	---	
Furth AHP	1,847	1,299	1,299	---	548	542	6	
Fulda AAF	44,603	37,484	37,235	249	7,119	7,067	52	
Giessen AHP	1,849	1,106	1,106	---	743	743	---	
Goepplingen AAF	9,209	7,440	7,440	---	1,769	1,740	29	
Grafenwoehr AAF	20,301	14,100	14,095	5	6,201	6,194	7	
Hanau AAF	34,719	29,230	15,466	13,764	5,489	5,398	91	
Heidelberg AAF	22,674	15,791	14,572	1,219	6,883	6,643	240	
Heilbronn AHP	1,016	530	530	---	486	486	---	
Herzo AHP	1,239	1,239	1,239	---	---	---	---	
Hohenfels AAF	34,384	30,973	30,973	---	3,411	3,411	---	
Illesheim AAF	23,370	20,128	20,128	---	3,242	3,242	---	
Kirchgoens AHP	5,328	4,709	4,709	---	619	619	---	
Kitzingen AAF	57,752	40,506	32,577	7,929	17,246	17,077	169	
Landstuhl AAF	1,517	295	295	---	1,222	1,222	---	
Ludwigsburg AAF	12,085	10,280	1,334	8,946	1,805	1,432	373	
Maurice Rose AAF	12,987	8,475	8,459	16	4,512	4,453	59	
Nellingen AHP	4,942	2,169	2,169	---	2,773	2,773	---	
Prmasens AHP	10,614	8,439	8,439	---	2,175	2,173	2	

Table 6. VFR Air Traffic Activity at U.S. Army Airfields Overseas (cont)
Calendar Year 1975

Army Airfield and Location	Total	Type of Operation										
		Local			Itinerant							
		Total	Military	Civil	Total	Military	Civil					
Germany (cont)												
Schwaebisch Gmünd AAF	4,464	3,152	3,152	---	1,312	1,312	---	---	---	---	---	---
Schwaebisch Hall AAF	35,610	23,913	16,679	7,234	11,697	10,555	1,142	---	---	---	---	---
Schweinfurt AAF	1,675	1,141	1,141	---	534	534	---	---	---	---	---	---
Stuttgart AAF*	7,371	375	375	---	6,996	6,996	---	---	---	---	---	---
Ulm AAF	6,660	6,267	731	5,536	393	393	---	---	---	---	---	---
Vilsack AAF	3,695	2,481	1,171	1,310	1,214	950	264	---	---	---	---	---
Wertheim AAF	8,624	8,083	8,079	4	541	534	7	---	---	---	---	---
Wildflecken AAF	550	---	---	---	550	550	---	---	---	---	---	---
Japan												
Rankin AAF	24,380	16,204	16,204	---	8,176	8,170	6	---	---	---	---	---
Korea												
A-306	27,160	19,407	19,300	107	7,753	7,630	123	---	---	---	---	---
A-511	105,919	42,742	39,602	3,140	63,177	62,082	1,095	---	---	---	---	---
A-805	39,008	23,666	23,666	---	15,342	15,311	31	---	---	---	---	---
H-112	25,573	18,484	18,484	---	7,089	7,089	---	---	---	---	---	---
H-201	30,869	---	---	---	30,869	30,869	---	---	---	---	---	---
H-207	21,592	14,471	14,471	---	7,121	7,121	---	---	---	---	---	---
H-210	23,339	9,498	9,498	---	13,841	13,841	---	---	---	---	---	---
H-220	57,084	33,698	33,698	---	23,386	23,386	---	---	---	---	---	---
Seoul Air Base	1,704	1,704	1,672	32	---	---	---	---	---	---	---	---
Tiract	2,300	1,962	1,962	---	338	324	14	---	---	---	---	---

Table 6. VFR Air Traffic Activity at U.S. Army Airfields Overseas (cont)
 Calendar Year 1975

Army Airfield and Location	Total	Type of Operation									
		Local			Itinerant						
		Total	Military	Civil	Total	Military	Civil				
Korea (cont)											
FOC North	68,147	55,205	55,205	---	12,942	12,942	---				
FOC South	49,360	37,215	34,955	2,260	12,145	12,145	---				
Brooklyn FCC	2,976	1,360	1,360	---	1,616	1,614	2				
Evenreach FCC	4,340	83	83	---	4,257	4,257	---				
Richmond FCC	2,358	---	---	---	2,358	2,358	---				
Warrior FCC	19,989	---	---	---	19,989	19,989	---				
Marshall Islands											
Buchholz AAF	19,536	8,001	141	7,860	11,535	10,939	596				
Turkey											
Sinop AAF	376	348	348	---	28	28	---				

*Report is not for full year.
 Source: Summary of Air Traffic Activity Count, Department of the Army, U.S. Army Aeronautical Service Office.

Table 7. Instrument and VFR Flight Operations, Instrument Approaches, and Automatic Carrier Landing System Approaches Reported by U.S. Naval Aeronautical Facilities in the United States of America
Calendar Year 1975

Type of Facility and Location	Total	Type of Flight Operation				Instrument Approaches		ACLS Approaches
		Instrument		VFR		Military	Civil	
		Military	Civil	Military	Civil			
Total - Worldwide	7,341,769	1,517,991	186,589	4,937,593	699,596	530,288	12,459	27,871
Total - United States	6,626,354	1,402,336	128,571	4,480,036	615,411	490,273	9,825	27,871
NAVSTA Adak, Alaska (Mitchell Field)	9,582	2,825	675	5,264	818	1,511	165	---
NAS Alameda, Ca.	13,522	238	60	10,329	2,895	---	---	---
NAS NALF Crows Landing*	86,515	17,790	297	39,303	29,125	4,732	77	---
NAS Nimitz Field	175,608	---	---	2,282	173,326	---	---	---
NAS Barbers Point, Hawaii*	127,983	26,936	226	79,359	21,462	7,557	1,963	---
PMFR ALF Ford Island	13,542	1,379	77	11,961	125	118	---	---
MCAS John Rodgers Field*	140,121	32,643	11,717	79,008	16,753	10,464	152	---
MCAS Barking Sands, Hawaii	65,785	18,261	14,647	26,436	6,441	5,434	54	---
NAS Brunswick, Me. ††	175,746	71,506	142	103,921	177	10,288	---	10,888
NAS Cecil Field, Fla.	95,721	---	---	95,721	---	---	---	---
NAS OLF Whitehouse	294,291	31,959	3,379	258,953	---	17,450	---	---
MCAS Chase Field, Beeville, Tex.	83,524	45,389	3,723	83,524	---	18,339	484	---
MCAS NALF Goliad	132,520	---	---	69,656	13,752	---	---	---
NAF Cherry Point, N.C. (Cunningham Field)	34,105	8,520	326	21,808	3,451	---	---	---
NAF China Lake, Ca. (Armitage Field)	252,346	52,786	135	198,751	674	23,748	59	---
NAS Corpus Christi, Tex.	102,210	3,054	---	99,156	---	---	---	---
NAS NALF Cabanis Field	74,039	---	---	74,039	---	---	---	---
NAS NALF Waldron Field	---	---	---	---	---	---	---	---

Table 7. Instrument and VFR Flight Operations, Instrument Approaches, and Automatic Carrier Landing System Approaches
 Reported by U.S. Naval Aeronautical Facilities in the United States of America (cont)
 Calendar Year 1975

Type of Facility and Location	Type of Flight Operation							
	Total	Instrument		VFR		Instrument Approaches		ACLS Approaches
		Military	Civil	Military	Civil	Military	Civil	
NSWC	10,203	---	---	2,065	8,138	---	---	---
NAS	95,776	15,030	2,188	37,749	40,809	3,327	159	---
NPTA	112,495	786	1	110,623	1,085	---	---	---
MCAS	123,797	58,305	4,075	37,382	24,035	21,293	1,351	---
NAS	102,899	6,158	43	92,279	4,419	3,012	64	---
NAS	44,397	7,208	217	20,908	16,064	3,030	77	---
NAS	125,229	43,249	1,387	79,659	934	16,608	302	---
MCAS	52,101	9,903	19	39,322	2,857	4,141	9	---
NAS	87,037	16,116	12,535	42,030	16,356	3,018	64	---
NAS	203,635	27,494	1,541	174,340	260	9,413	10	---
NAS	13,120	---	---	13,120	---	---	---	---
NAS	53,676	2,721	12	50,762	181	2,954	18	---
NAS	254,818	76,326	3,352	170,096	5,044	28,763	54	6,450
NAVSTA	90,655	4,410	32	85,551	662	---	---	---
NAS	57,954	25,481	207	17,702	14,564	5,618	121	---
NAS	159,371	52,413	28	106,917	13	14,411	20	---
	12,524	---	---	12,524	---	---	---	---
	51,908	51,908	---	---	---	---	---	---
NAS	289,795	88,876	236	196,204	4,479	36,809	132	5,245

Table 7. Instrument and VFR Flight Operations, Instrument Approaches, and Automatic Carrier Landing System Approaches Reported by U.S. Naval Aeronautical Facilities in the United States of America (cont)
Calendar Year 1975

Type of Facility and Location	Type of Flight Operation						Instrument Approaches		ACLS Approaches
	Total	Instrument		VFR		Military	Civil		
		Military	Civil	Military	Civil				
NAS Moffett Field, Ca.	66,491	18,946	1,349	22,889	23,307	7,992	596	---	
NAS New Orleans, La.	101,319	24,877	1,448	29,231	45,763	4,235	11	---	
MCAS(N) New River, Jacksonville, N.C. (McCurcheon Field)	111,593	2,878	56	90,200	18,459	5,645	91	---	
NAS Norfolk, Va. (Chambers Field)	169,567	37,458	3,036	128,424	649	14,796	650	---	
NAS North Island, San Diego, Ca. (Halsey Field)	78,325	38,739	3,282	26,170	10,134	9,623	830	---	
NALF San Clemente Island	205,430	13,573	---	191,701	156	3,435	21	---	
	50,074	15,959	603	30,681	2,831	2,379	153	---	
NAS Patuxent River, Md.	159,141	47,134	18,254	88,209	5,544	16,174	134	1,098	
OLF Webster	23,796	---	---	22,982	814	---	---	---	
NAS Pensacola, Fla.	1,582	1,582	---	---	---	---	---	---	
Chevalier Field	200,603	75,685	1,164	123,648	106	117,667	684	---	
Forest Sherman Field	10,608	10,608	---	---	---	---	---	---	
OLF Bronson	116,305	116,305	---	---	---	---	---	---	
OLF Choctaw	101,309	440	6	100,861	2	---	---	---	
Saufley Field	72,900	28,457	2,174	41,233	1,036	7,835	499	---	
NAS Point Mugu, Ca.	6,527	184	457	2,454	3,432	232	308	---	
OLF San Nicolas Island	106,797	12,413	9	92,424	1,951	2,930	18	---	
MCAS(H) Santa Ana, Ca.	47,980	6,714	242	29,708	11,316	2,913	57	---	
NAS South Weymouth, Mass.									

Table 7. Instrument and VFR Flight Operations, Instrument Approaches, and Automatic Carrier Landing System Approaches
 Reported by U.S. Naval Aeronautical Facilities in the United States of America (cont)
 Calendar Year 1975

Type of Facility and Location	Type of Flight Operation						Instrument Approaches		ACLS Approaches
	Total	Instrument		VFR		Military	Civil		
		Military	Civil	Military	Civil				
NAS Oceana, Virginia Beach, Va. (Apollo Soucek Field)	125,014	57,646	1,034	64,417	1,917	12,161	36	4,190	
NAF Warminster, Pa. Whidbey Island, Wash. (Ault Field)	6,812	1,434	89	4,965	324	---	---	---	
NAS Whiting Field, Milton, Fla. North & South Field	137,864	43,879	27,889	57,431	8,665	14,365	187	---	
NAS OLF Brewton Field, Ala. †	246,263	21,617	2	224,640	4	5,594	---	---	
OLF Holley Field	53,089	---	---	53,089	---	---	---	---	
OLF Middleton Field †	77,567	---	---	77,349	218	---	---	---	
OLF Santa Rosa Field	47,102	---	---	46,851	251	---	---	---	
OLF Site #6*	3,060	---	---	3,060	---	---	---	---	
OLF Site #8	93,968	---	---	93,968	---	---	---	---	
OLF Spencer Field	129,445	---	---	129,445	---	---	---	---	
NAS Willow Grove, Pa.	61,832	9,205	1,618	29,616	21,393	7,222	215	---	
MCAS Yuma/Yuma Intl. Airport Yuma, Ariz.	177,365	16,933	4,582	107,842	48,008	3,037	---	---	

* Less than full year data.

** Aircraft operations depicted are a composite of NAS Lakehurst West Field and NATF Lakehurst.

† Includes only those times field is manned by Whiting Field personnel.

†† Commencing July 1, 1975 assumed additional responsibility for approach control service.

Source: Air Traffic Activity Reports — OPNAV Form 3721/13.

Table 8. Instrument and VFR Flight Operations, Instrument Approaches, and Automatic Carrier Landing System Approaches
 Reported by U.S. Naval Aeronautical Facilities Overseas
 Calendar Year 1975

Type of Facility and Location	Type of Flight Operation								Instrument Approaches		ACLS Approaches
	Total	Instrument		VFR		Instrument Approaches		Military	Civil		
		Military	Civil	Military	Civil	Military	Civil				
Total - Worldwide	7,341,769	1,517,991	186,589	4,937,593	699,596	530,288	12,459	---			
Total - Overseas	715,415	115,655	58,018	457,557	84,185	40,015	2,634	---			
Antarctica NSF Williams Field, McMurdo Station *	5,116	1,460	19	3,614	23	458	5	---			
Bermuda NAS Bermuda	35,915	10,530	12,995	10,464	1,926	2,002	1,600	---			
Cuba NAS Guantanamo Bay (Leward Point Field)	16,588	---	---	16,363	225	181	---	---			
Guam NAS Agana, (Brewer Field)	74,201	14,036	12,542	20,072	27,551	2,267	90	---			
Iceland NAVSTA Keflavik	53,803	23,790	18,334	7,062	4,617	2,960	165	---			
Italy NAF Sigonella, Sicily	30,667	8,351	32	22,157	127	---	---	---			
Japan MAG (36) Camp Schwab, Okinawa MCAS(H) Futema, Okinawa MCAS Iwakuni	--- 71,454 92,750	--- 4,659 16,277	--- 16 13,032	--- 66,739 55,743	--- 40 7,698	1,706 4,813 10,736	--- 30 312	--- --- ---			

Table 8. Instrument and VFR Flight Operations, Instrument Approaches, and Automatic Carrier Landing System Approaches Reported by U.S. Naval Aeronautical Facilities Overseas (cont)
Calendar Year 1975

Type of Facility and Location	Total	Type of Flight Operation				Instrument Approaches		ACLS Approaches
		Instrument		VFR		Military	Civil	
		Military	Civil	Military	Civil			
Midway NAVSTA Midway Island (Henderson Field)	5,472	2,141	162	3,099	70	614	49	---
Morocco NTC Kenitra	4,830	1,905	28	2,897	---	1,110	16	---
Philippine Islands NAS Cubi Point	210,991	18,672	106	181,458	10,755	6,394	23	---
Puerto Rico NAVSTA Roosevelt Roads (Ofstie Field)	48,349	3,386	156	28,685	16,122	2,815	127	---
Spain NAVSTA Rota	65,279	10,448	596	39,204	15,031	3,959	217	---

*Less than full year data.
Source: Air Traffic Activity Reports - OPNAV Form 3721/13.

GLOSSARY

ABBREVIATIONS

AAF — Army Air Field
 ACLS — Automatic Carrier Landing System
 AFA — Army Flight Activity
 AFB — Air Force Base
 AHP — Army Heliport
 ALF — Auxiliary Landing Field
 ARNG — Army National Guard
 FW — Fixed Wing
 MAG — Marine Air Group
 MARTU — Marine Air Reserve Training Unit
 MATCU — Marine Corps Air Traffic Control Unit
 MCAF — Marine Corps Air Facility
 MCALE — Marine Corps Auxiliary Landing Field
 MCAS — Marine Corps Air Station
 MCAS(H) — Marine Corps Air Station (Helicopter)

ABBREVIATIONS

NAF — Naval Air Facility
 NALF — Naval Auxiliary Landing Field
 NAS — Naval Air Station
 NAVDET — Naval Detachment
 NAVSTA — Naval Station
 NCS — Naval Communication Station
 NOLF — Naval Outlying Field
 NPTR — National Parachute Test Range
 NSF — Naval Support Force
 NTC — Naval Training Command
 OLF — Outlying Field
 PMRF — Pacific Missile Range Facility
 RW — Rotary Wing
 TAC — Tactical Air Command