

AD-A040 512

HARRY DIAMOND LABS ADELPHI MD  
TRANSIENT RESPONSE OF A LOG-PERIODIC ANTENNA BASED ON BROAD-BAN--ETC(U)  
APR 77 W J STARK  
HDL-TR-1792

F/G 9/5

UNCLASSIFIED

NL

| OF |  
AD  
A040512  
1792



END  
DATE  
FILMED  
7-77

NOL TR-1792

12  
PW

ADA 040512

Transient Response of a Log-Periodic Antenna  
Based on Broad-Band Continuous-Wave Measurements

April 1977

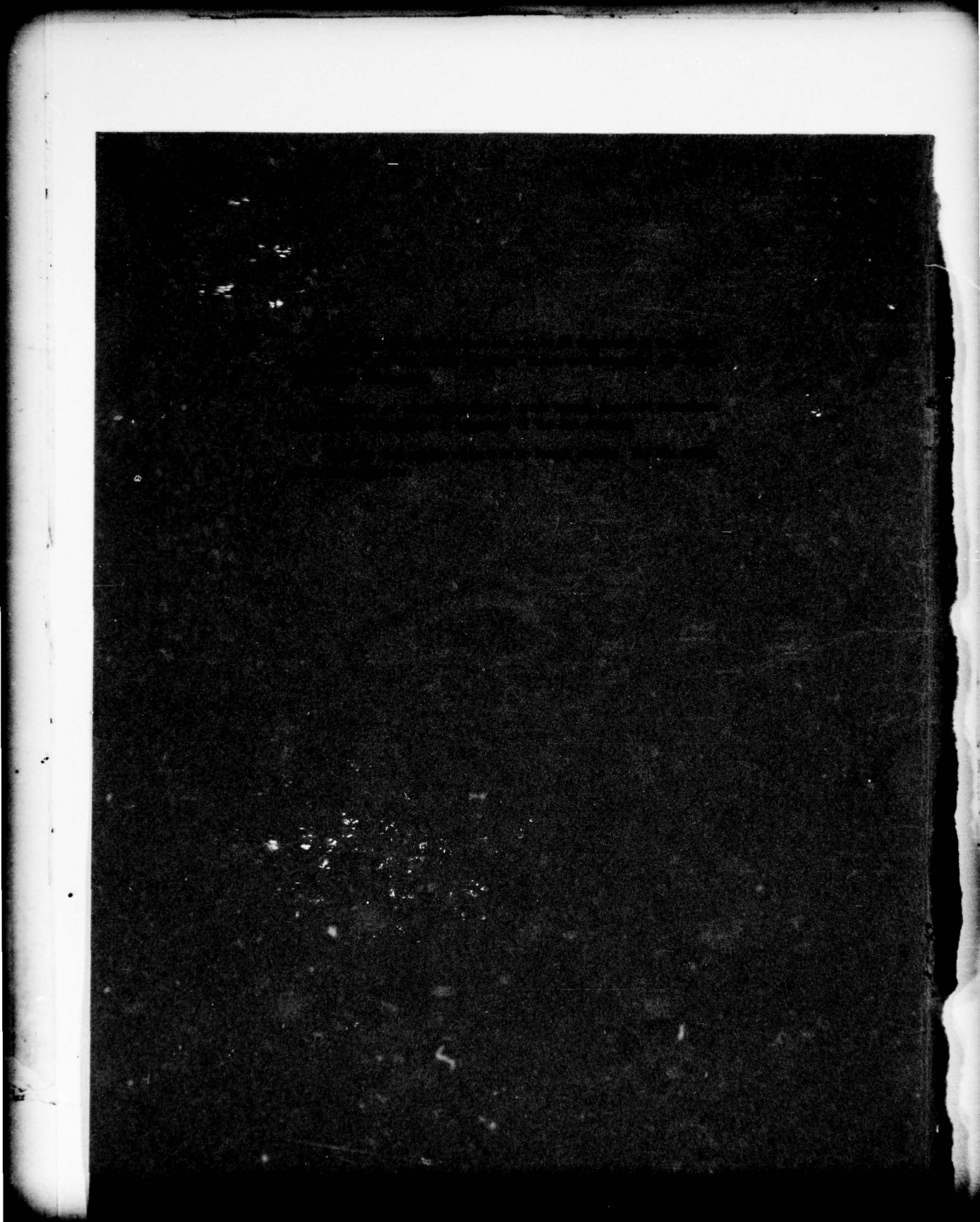
DDC  
RECEIVED  
JUN 14 1977  
RECEIVED

This work has been funded by the Defense Nuclear Agency under contract  
DNR04R2076/S1/Unmanned Airborne

DDC FILE COPY



U.S. Army Material Development  
and Readiness Command  
NARY DIAMOND LABORATORIES  
Adelphi, Maryland 20783



UNCLASSIFIED

SECURITY CLASSIFICATION OF THIS PAGE (When Data Entered)

REPORT DOCUMENTATION PAGE		READ INSTRUCTIONS BEFORE COMPLETING FORM	
14. REPORT NUMBER HDL-TR-1792	2. GOVT ACCESSION NO.	3. RECIPIENT'S CATALOG NUMBER 9	
6. TITLE (and Subtitle) Transient Response of a Log-Periodic Antenna Based on Broad-Band Continuous-Wave Measurements.		5. TYPE OF REPORT & PERIOD COVERED Technical Report.	
7. AUTHOR(s) Werner J. Stark		8. CONTRACT OR GRANT NUMBER(s) MIPR: 75552	
9. PERFORMING ORGANIZATION NAME AND ADDRESS Director Defense Nuclear Agency Washington, DC 20305		10. PROGRAM ELEMENT, PROJECT, TASK AREA & WORK UNIT NUMBERS Program Ele: 6.27.04H Work Unit: 51	
11. CONTROLLING OFFICE NAME AND ADDRESS U.S. Army Materiel Development & Readiness Command Alexandria, VA 22333		12. REPORT DATE April 1977	
14. MONITORING AGENCY NAME & ADDRESS (if different from Controlling Office) 12 24p.		13. NUMBER OF PAGES 30	
16. DISTRIBUTION STATEMENT (of this Report) Approved for public release; distribution unlimited.		15. SECURITY CLASS. (of this report) UNCLASSIFIED	
17. DISTRIBUTION STATEMENT (of the abstract entered in Block 20, if different from Report)		15a. DECLASSIFICATION/DOWNGRADING SCHEDULE	
18. SUPPLEMENTARY NOTES HDL Project: E195E3 DRCMS Code: 697000.22.11205 This work has been funded by the Defense Nuclear Agency under subtask R99OAXEBO75/51/Ground-Based Antennas			
19. KEY WORDS (Continue on reverse side if necessary and identify by block number) Log-periodic antenna Transient response Broad-band harmonic analysis			
20. ABSTRACT (Continue on reverse side if necessary and identify by block number) The broad-band characteristics of a very-high-frequency log-periodic antenna were determined and used to compute the response of this antenna to a transient incident electromagnetic field. The antenna characteristics were obtained from broad-band continuous-wave (CW) measurements, and the transient response was computed from Fourier analysis of the CW data. The computed transient response showed good agreement with the measured			

DDDC  
RECEIVED  
JUN 14 1977  
C

113 050

1/10

UNCLASSIFIED

SECURITY CLASSIFICATION OF THIS PAGE(When Data Entered)

transient response. An approximate theoretical solution was developed based on these measurements.

## CONTENTS

	<i>Page</i>
1. INTRODUCTION .....	5
1.1. Objectives .....	5
1.2. Method of Analysis .....	5
2. EXPERIMENTAL ANALYSIS .....	5
2.1. Description of Continuous-Wave Facility .....	5
2.2. Measurements on Log-Periodic Antenna .....	6
3. EQUIVALENT CIRCUIT FOR LOG-PERIODIC ANTENNA .....	13
3.1. Semiempirical Model for Antenna Response .....	13
3.2. Analytical Computations of Antenna Response .....	15
4. CONCLUSIONS AND RECOMMENDATIONS .....	18
APPENDIX A. APPROXIMATE RESPONSE OF A CYLINDRICAL DIPOLE AN- TENNA .....	19

## FIGURES

1 Continuous-wave test facility .....	6
2 Instrumentation for continuous-wave test .....	7
3 Log-periodic antenna (frequency range: 30 to 76 MHz) .....	7
4 Continuous-wave data for log-periodic antenna .....	8
5 Continuous-wave data for log-periodic antenna near radio-frequency shelter .....	9
6 Continuous-wave data for log-periodic antenna for vertically polarized incident field .	10
7 Input impedance of log-periodic antenna .....	11
8 Transient incident electromagnetic pulse .....	12
9 Transient response of log-periodic antenna .....	12
10 Thévenin equivalent circuit for log-periodic antenna .....	13
11 Incident electromagnetic pulse .....	16
12 Total electromagnetic pulse after ground interaction .....	16
13 Log-periodic antenna transient response to total electromagnetic pulse .....	17

## 1. INTRODUCTION

### 1.1. Objectives

There are many types of broad-band communications antennas used as part of Army tactical communications. Some of these antennas are designed to operate at frequencies which lie within the principal frequency spectrum associated with the radiated electromagnetic pulse (EMP) from an exoatmospheric nuclear burst; consequently, a significant EMP response of such an antenna is to be expected. An example of this type of antenna is Log-periodic (LP) Antenna AS-2169, designed for operation in the frequency range of 30 to 76 MHz. It is the objective of this study to determine the characteristics of this antenna, so that one can compute the response of the antenna to an incident EMP when the antenna is deployed in a tactical configuration.

### 1.2. Method of Analysis

The properties of LP antennas have been discussed in a number of textbooks. Mittra<sup>1</sup> describes the approach for studying these antennas in terms of a detailed analysis of the propagation properties of waves along the LP structure. The circuit-and-array approach is discussed in detail by Ma.<sup>2</sup> The second of these approaches has recently been applied<sup>3</sup> to a five-element LP array to compute the impulse response of such an antenna.

Each of the above theoretical approaches requires a considerable amount of analysis and computer programming to determine the solution. Furthermore, the theoretical solutions are carried out for idealized geometries, i.e., antennas in free space. An EMP vulnerability assessment, on the other hand, necessitates solutions for responses of antennas as they are used in communications systems. For these reasons, the characteristics of the AS-2169 were determined from experimental data, and a semiempirical model of the antenna was then developed based on these measurements.

## 2. EXPERIMENTAL ANALYSIS

### 2.1. Description of Continuous-Wave Facility

We present here a brief description of the continuous-wave (CW) test facility (fig. 1) since it was used for making most of the measurements on the antenna. The facility basically consists of a set of horizontal and vertical transmit antennas for generating the incident field and instrumentation for measuring the antenna response relative to the incident field. The transient response of the antenna is determined from Fourier inversion of the CW data.

The operation of the facility is automated to the extent that the frequency synthesizer is under control of the Hewlett-Packard (HP) 9820 calculator, and the output from the network analyzer is read by the calculator. Under normal operation, the calculator commands the synthesizer to sweep over a given frequency range at a specified frequency increment. The minimum and maximum frequencies are chosen so that the peak amplitudes of the response fall well within these frequency limits, and the frequency increment is selected to provide for adequate resolution of the response in the frequency domain.

<sup>1</sup> R. Mittra, Log-Periodic Antennas, Antenna Theory, Part 2, edited by R. E. Collin and F. J. Zucker, McGraw-Hill, Inc., New York (1969), 349-385.

<sup>2</sup> M. T. Ma, Theory and Application of Antenna Arrays, John Wiley and Sons, New York (1974).

<sup>3</sup> F. J. Solman, III, Time Domain Response of Wire Antenna Arrays, United States National Committee-International Union of Radio Science (USNC-URSI) Meeting, University of Illinois, Urbana (June 1975).

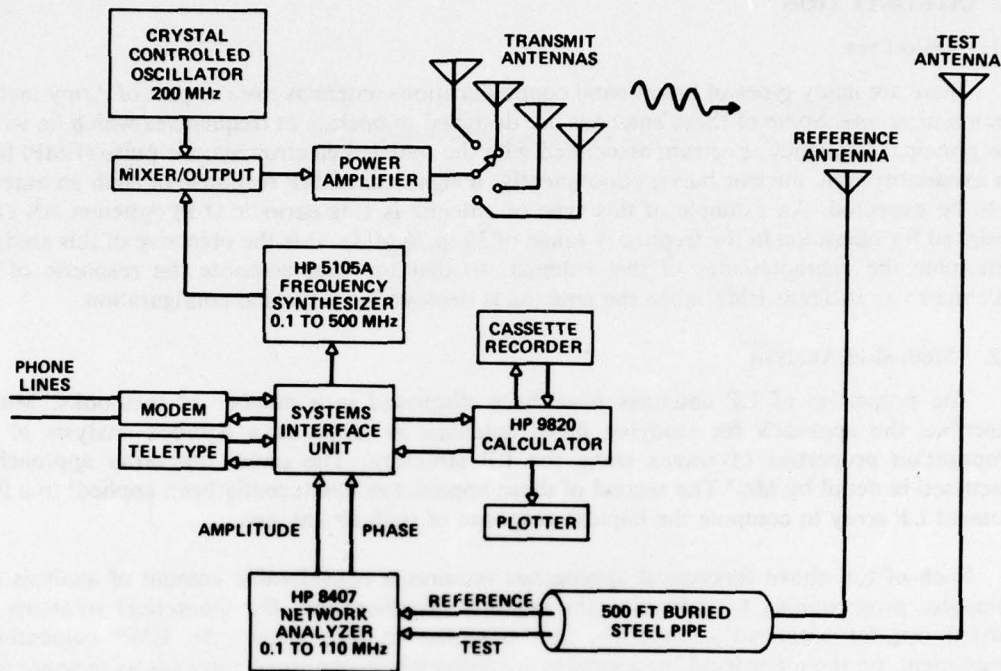


Figure 1. Continuous-wave test facility.

The CW data are normally recorded on cassette tapes and plotted on the HP plotter. Once recorded, the data can be transferred at some convenient time later to a Control Data Corp. (CDC) 6600 computer for subsequent data analysis. Figure 2 shows the frequency synthesizer and network analyzer in the foreground and the cassette recorder, the calculator, and the plotter in the background.

Two types of measurements are normally made. First, one usually measures the terminal response of the antenna relative to the field incident on the antenna; this is sometimes referred to as the transfer function or effective height of the antenna. Second, one typically measures the antenna input impedance. The transfer function is determined from two separate measurements: (1) the response of the antenna relative to a reference antenna and (2) the incident field at the location of the test antenna (in the absence of this antenna) relative to the reference antenna. The transfer function is then given by the ratio of these two measurements. The antenna impedance is measured directly by operating the antenna in the transmit mode and measuring the voltage at the antenna input in the reference channel and the corresponding antenna input current in the test channel.

## 2.2. Measurements on Log-Periodic Antenna

When the antenna is used in a tactical configuration, it is normally supported by an aluminum mast (fig. 3). It is well known that the antenna has a high directivity in the plane of the antenna (along the locus of midpoints from the long elements to the short elements). To illustrate

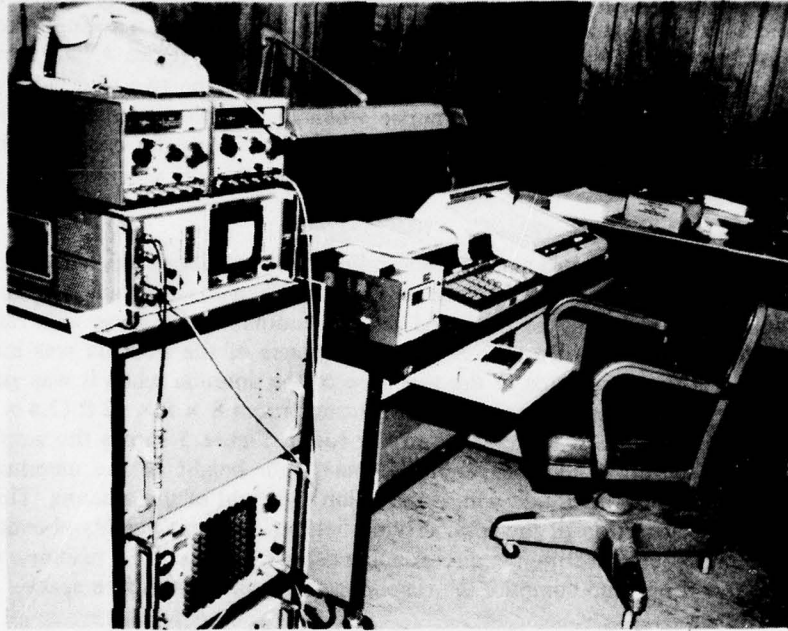


Figure 2. Instrumentation for continuous-wave test.

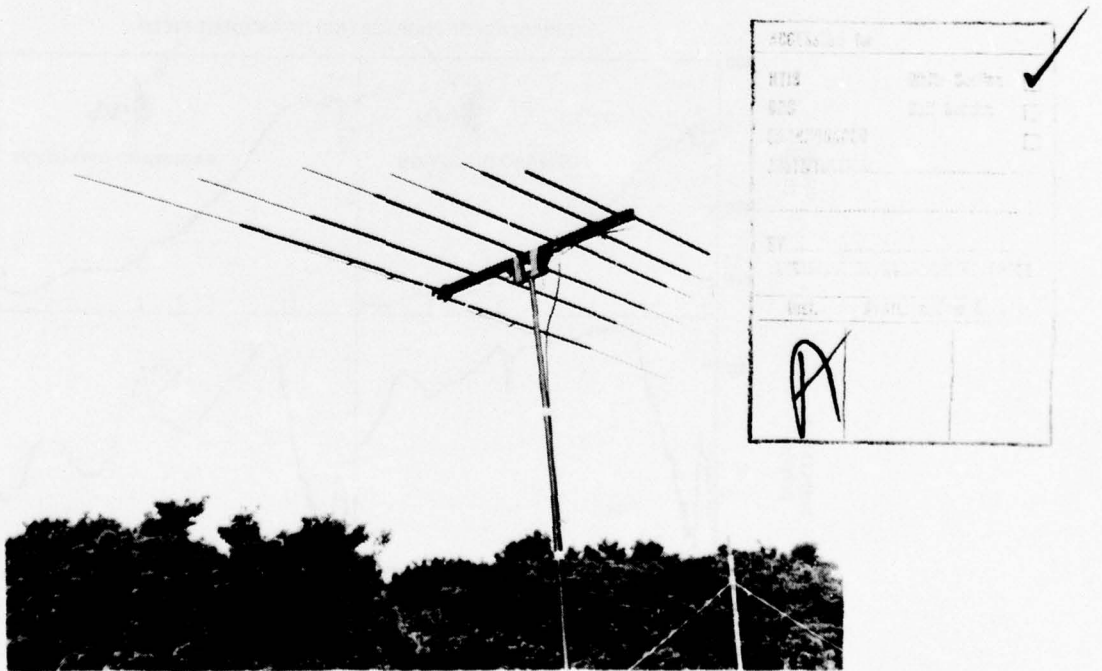


Figure 3. Log-periodic antenna (frequency range: 30 to 76 MHz).

this directional property, measurements were made for a horizontally polarized field incident from both the forward and backward directions when the antenna was supported on a 16-ft wooden mast. The results of these measurements are shown in figure 4, wherein pronounced differences in the amplitudes of the responses are evident for the two directions of incidence. The antenna has a higher broad-band response when the smallest element is pointing in the direction of the incident wave. (This is sometimes referred to as the backfire direction.) This direction of incidence also results in a maximum response for the case of a transient incident field.

The geometry for the forward and backward directions was idealized, since the antenna was far from ground and any other conducting scatterers. When the antenna is used as part of a communications system, it may be deployed on an aluminum mast close to a radio-frequency (rf) signal shelter. The effect of a shelter on the response of the antenna was investigated by making a number of measurements of the response of the antenna when it was supported on a mast near such a shelter. The shelter used was a screen room  $8 \times 8 \times 12$  ft ( $2.4 \times 2.4 \times 3.7$  m) with the antenna above one of the corners of the room. Figure 5 shows the amplitudes of the responses relative to the incident field at the maximum height of the antenna. The major variation is a reduction in amplitude with a reduction in height of the antenna. This variation is primarily due to the variation of the total driving field at different heights aboveground. From these measurements, one can compute a reasonable estimate of the EMP response of an antenna near such a shelter if one can compute the response of the antenna in free space.

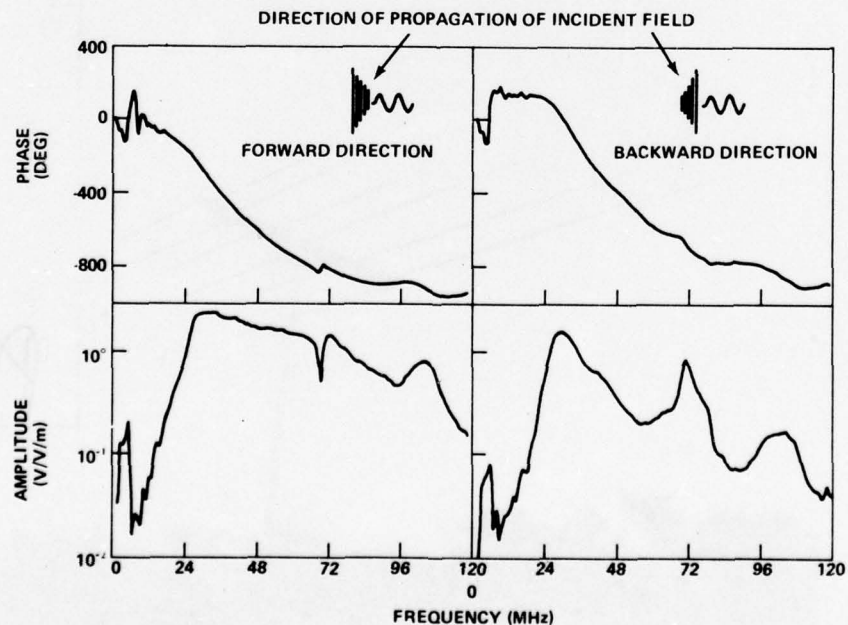


Figure 4. Continuous-wave data for log-periodic antenna.

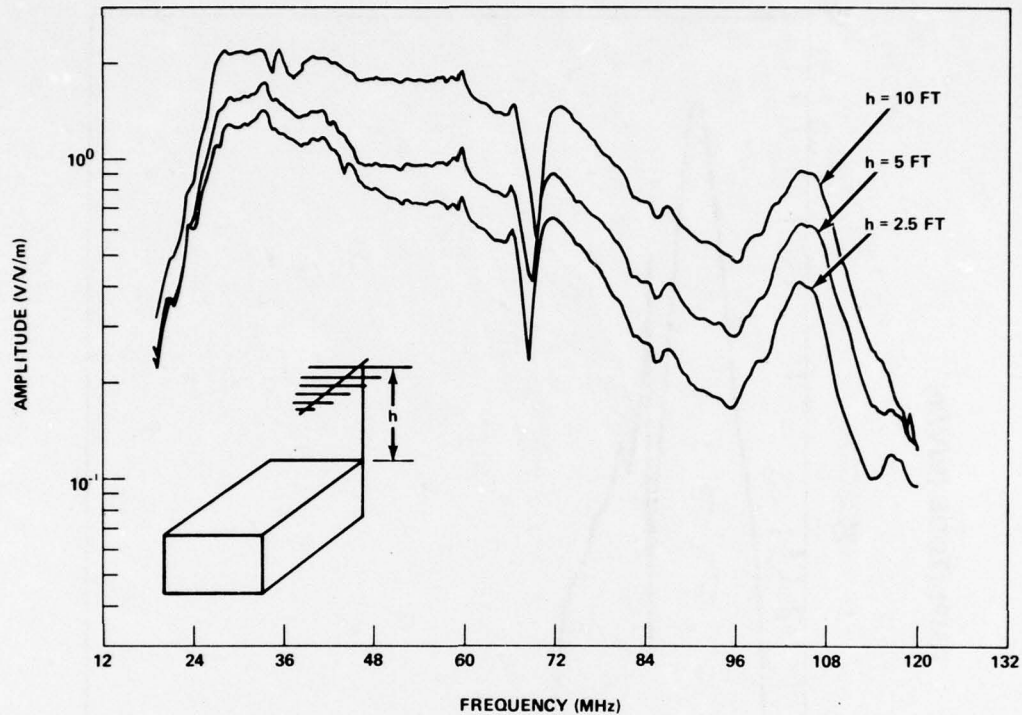


Figure 5. Continuous-wave data for log-periodic antenna near radio-frequency shelter.

Not normally considered in the analysis of an LP antenna is the response of such an antenna to a vertically polarized incident field. This response must be considered for an EMP vulnerability assessment, because the aluminum mast on which the antenna is supported also behaves like a receiving antenna. Figure 6 shows the results of a CW measurement at the output of the antenna cable when the antenna is on a 16-ft mast for vertical polarization. The mast behaves like a  $\frac{1}{4}$ -wavelength monopole antenna, and it can contribute a large, low-frequency signal to the response of the antenna and its cable.

To completely characterize the antenna, one must know the antenna impedance. Figure 7 shows the input impedance at a 40-ft cable attached to the antenna. Over the operating range of the antenna, the input impedance can be approximated reasonably well by a real 50- $\Omega$  resistance. A set of measurements was made of the antenna's transient response for evaluating the computation of the antenna's transient response by using CW data. The antenna was illuminated by a horizontally polarized pulse from an EMP simulator, and measurements were made of the responses of the antenna at the output of the antenna cable. The measured incident horizontal electric (E)-field component is shown in figure 8, and the measured transient response to this field is shown in figure 9. Also shown in figure 9 are the transient responses computed from CW data (sect. 3). The incident field was measured at the location of the antenna in the absence of the antenna and its support structure. This measurement was made by using an electrically small, capacitively top-loaded monopole antenna supported on a small instrumentation box containing the power supply and instrumentation for the measurement.

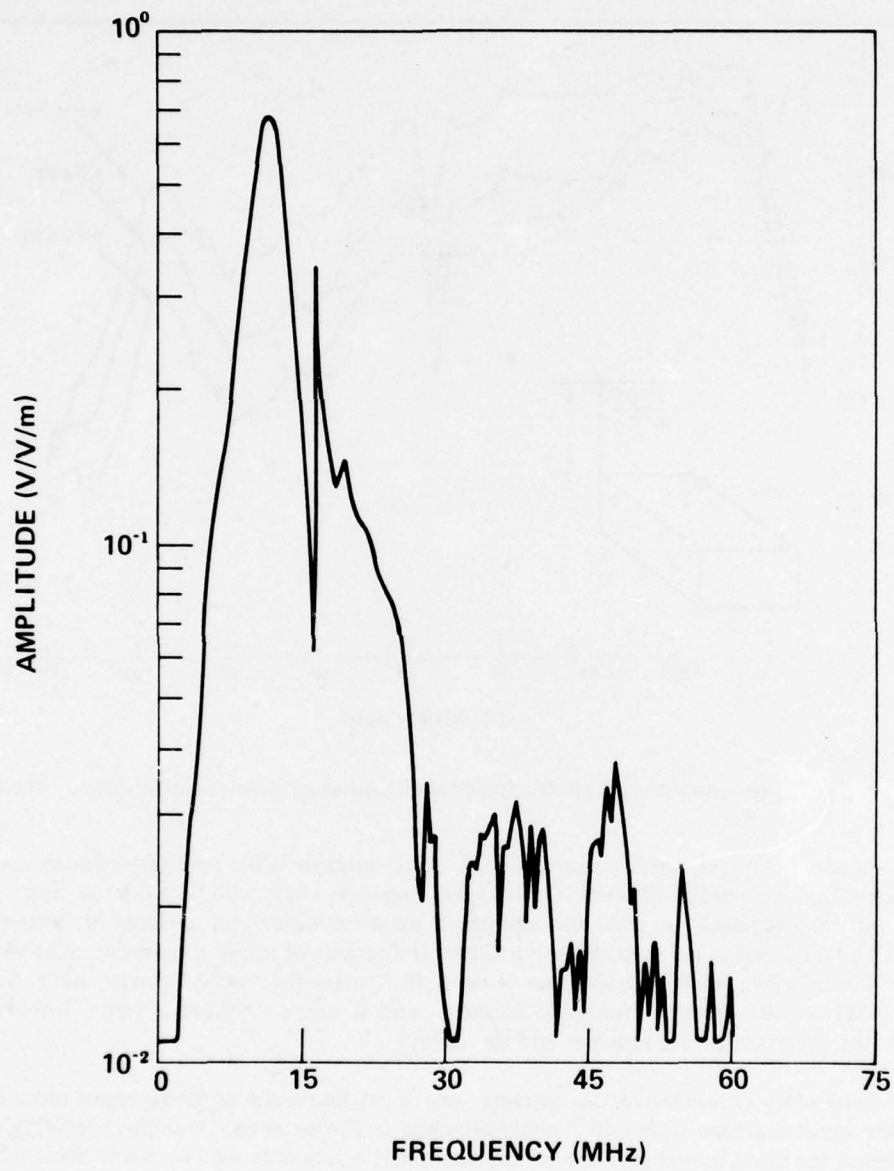


Figure 6. Continuous-wave data for log-periodic antenna for vertically polarized incident field.

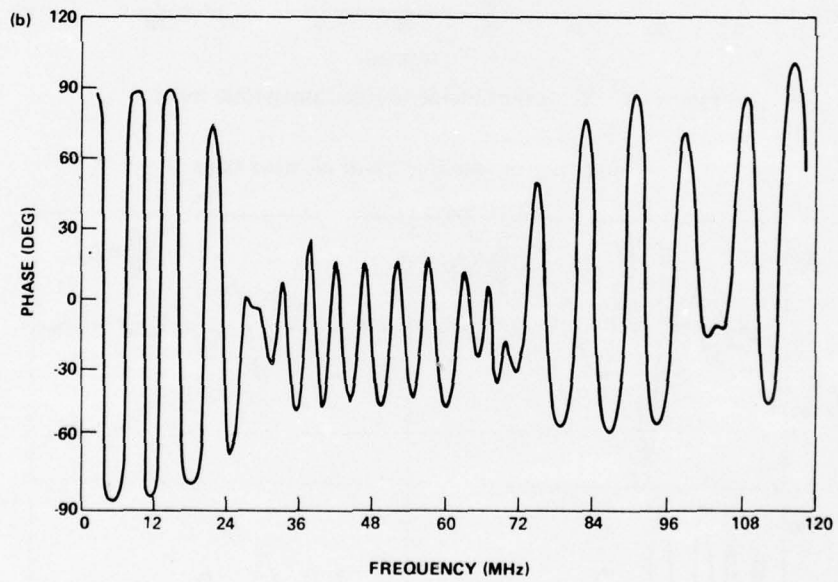
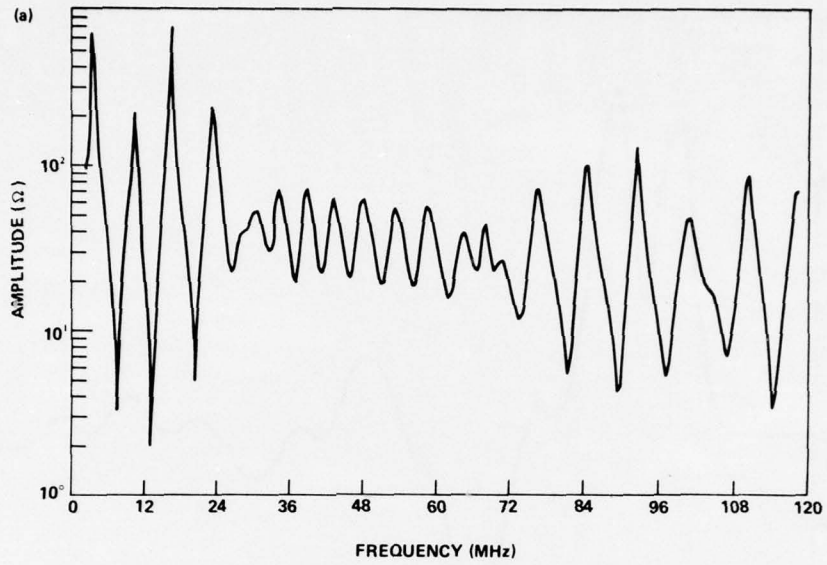


Figure 7. Input impedance of log-periodic antenna: frequency spectrum (a) amplitude and (b) phase.

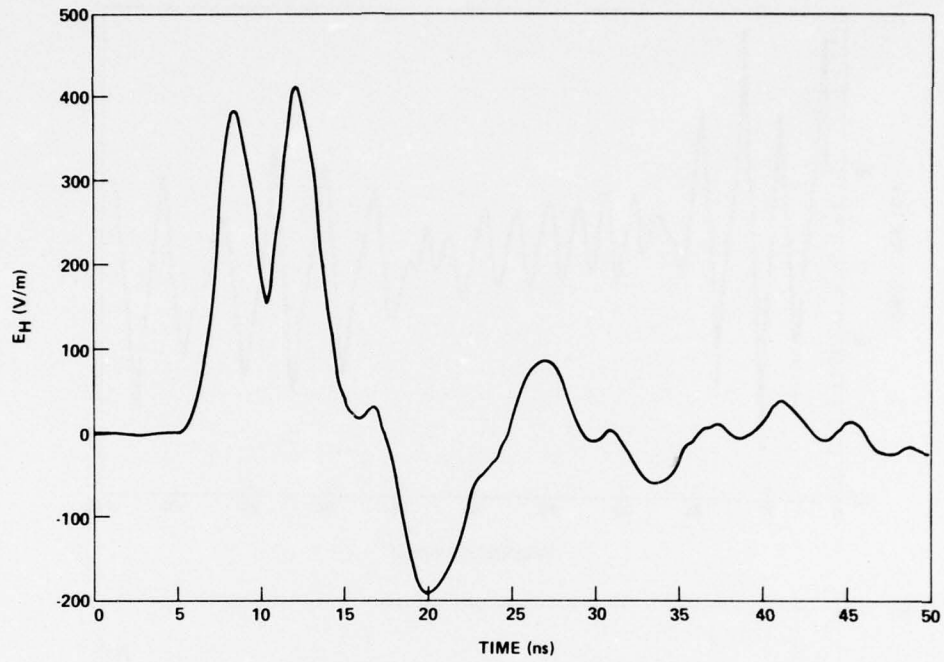


Figure 8. Transient incident electromagnetic pulse.

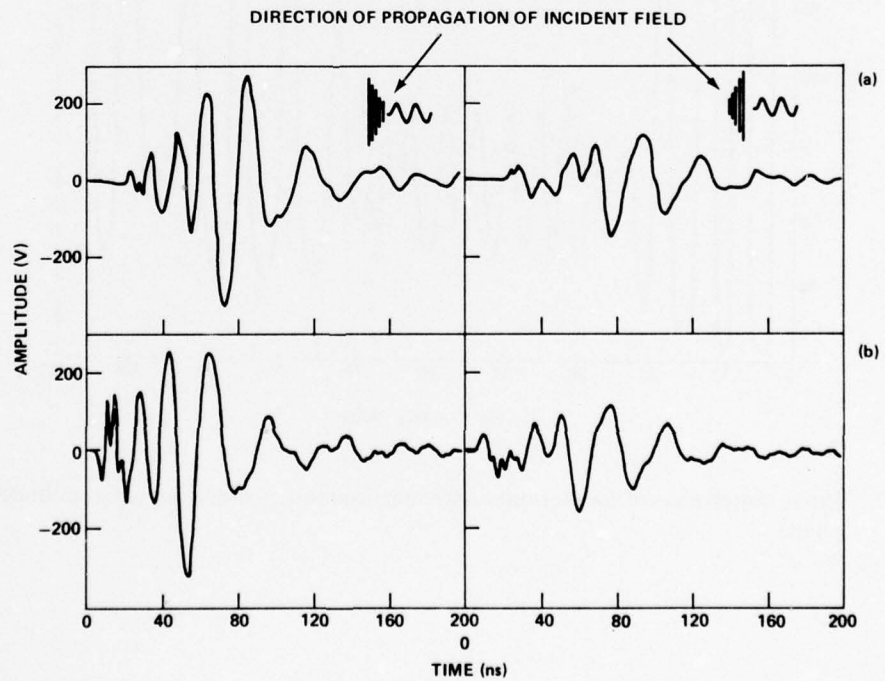


Figure 9. Transient response of log-periodic antenna: (a) measured and (b) computed from continuous-wave data.

### 3. EQUIVALENT CIRCUIT FOR LOG-PERIODIC ANTENNA

#### 3.1. Semiempirical Model for Antenna Response

The LP antenna and the cable attached to it are completely characterized when the output of the cable is described in terms of the Thévenin equivalent circuit shown in figure 10.

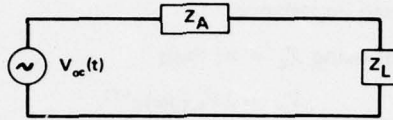


Figure 10. Thévenin equivalent circuit for log-periodic antenna.

In this figure,  $V_{oc}(t)$  is the open-circuit voltage response of the antenna and the cable to an incident electromagnetic field,  $Z_A$  is the network representing the input impedance of the cable at the receiver end with the antenna at the far end, and  $Z_L$  is the network representing the receiver. We can write  $Z_A$  in the frequency domain as

$$Z_A(j\omega) = Z_0 \frac{1 + R(j\omega)e^{-2\Gamma l}}{1 - R(j\omega)e^{-2\Gamma l}}, \quad (1)$$

where

$j\omega$  = complex radian frequency,

$Z_0$  = characteristic impedance of cable attached to antenna,

$$R(j\omega) = \frac{Z_{LP}(j\omega) - Z_0}{Z_{LP}(j\omega) + Z_0},$$

$$\Gamma = j\frac{\omega}{c} + \alpha,$$

$l$  = length of cable attached to antenna,

$Z_{LP}$  = input impedance of antenna,

$\alpha$  = attenuation constant.

This antenna impedance cannot easily be represented by a network over a wide range of frequencies. For the antenna under investigation, we can simplify equation (1) for the following reasons. First, we see from figure 7 that over the operating range of the antenna, the cable and antenna are well matched, so that for that range  $|R(j\omega)| \ll 1$ . Second, the term  $e^{-2\Gamma l}$  in equation (1) corresponds to a time delay of approximately 80 ns for a 30-ft cable; hence, the effects of any mismatch conditions at the antenna termination are not seen until after that time delay and do not affect the initial portion of the transient response. Then the antenna impedance in equation (1) simplifies to

$$Z_A(j\omega) \approx Z_0. \quad (2)$$

With the above approximation for  $Z_A$ , the voltage across a linear load at the output of the cable,  $V_L(j\omega)$ , can be written as<sup>4</sup>

$$V_L(j\omega) = V_{Z_0}(j\omega)(1 + \rho)e^{-\Gamma l} \quad (3)$$

<sup>4</sup> S. Goldman, Laplace Transform Theory and Electrical Transients, Dover Publications, Inc., New York (1966).

where

$V_{z_0}(j\omega)e^{-\Gamma l}$  = voltage into matched impedance at output of cable,

$$\rho = \frac{Z_L - Z_0}{Z_L + Z_0},$$

$Z_L$  = load impedance.

We obtain  $V_{oc}$  from equation (3) using  $Z_L = \infty$ ; then

$$V_{oc} = 2V_{z_0}(j\omega)e^{-\Gamma l}. \quad (4)$$

The problem of adequately characterizing the antenna to estimate its EMP response reduces to a determination of the induced voltage for a matched impedance load, at the output of the antenna cable.

There are several analytical methods for computing the response of an LP antenna; however, we want to investigate the possibility of developing a simple semiempirical model for this antenna. We can see from the experimental data that the antenna response for the forward direction of incidence is a rather slowly varying function in phase and amplitude over the operating range of the antenna. It should not be difficult, therefore, to fit such a function with a simple analytical expression for the antenna response.

The simplest possible model for the antenna is to assume that the dipole elements of the antenna are weakly coupled to one another and behave primarily as uncoupled dipole antennas. Admittedly, this is a crude approximation to a rather complex problem; however, we shall see that for a vulnerability assessment, this approximation suffices. By this approximation, the frequency domain solution for the antenna is of the form

$$V_{LP}(j\omega) = \sum_{i=1}^N (-1)^{N-1} V_i(j\omega) e^{-2j\omega d_i} \quad (5)$$

where

$V_{LP}(j\omega)$  = output voltage of antenna,

$N$  = number of dipole elements,

$V_i(j\omega)$  = output voltage of  $i$ th dipole element,

$d_i$  = distance of  $i$ th dipole element from shortest element.

The output voltage referred to is the voltage into a matched impedance load at the output of the coaxial cable connected to the antenna. The term  $(-1)^{N-1}$  accounts for the fact that the dipoles for the antenna are connected to the balanced feeder line in a phase-reversal fashion. The phase factor  $e^{-2j\omega d_i}$  accounts for the phase relationship of the responses of the dipole elements relative to the shortest element, i.e., to the output of the antenna.

There are innumerable approaches to the solution of the response of a dipole antenna. For the present purposes, we do not require a highly accurate solution and simply use a solution based on the transmission line analogy of a dipole antenna (app A). The dipole terms in equation (1) are then given by

$$V(j\omega) = \frac{E}{\Gamma} (1 + R_1) \frac{[1 - (1 + R_2)e^{-\Gamma l} + R_2 e^{-2\Gamma l}]}{1 + R_1 R_2 e^{-2\Gamma l}}, \quad (6)$$

where

$E$  = electric-field component of incident field,

$R_i$  = reflection coefficients,

$l$  = half-length of dipole.

The lengths of the elements to be used in equation (6) and the separation distances in equation (7) correspond to physical dimensions of an LP antenna. A reasonable estimate of these dimensions can be made if one knows the operating range of the antenna and the separation between the smallest and largest elements. The smallest and largest half lengths correspond to approximately  $\frac{1}{4}$  wavelength of the maximum and minimum operating frequencies, respectively. The lengths of the remaining elements can then be determined from the knowledge that adjacent lengths of the dipole elements form a geometric progression with a common ratio  $\tau$ :<sup>5</sup>

$$\frac{l_i}{l_{i+1}} = \tau, \quad i = 1, 2, \dots, N - 1;$$

the distances between adjacent elements is given by<sup>5</sup>

$$\Delta_i = l_i(1 - \tau)(\cot \alpha)/\tau, \quad i = 1, 2, \dots, N, \quad (7)$$

where  $\tan \alpha = (l_N - l_1)/d$ , with  $d$  being the separation between the longest and shortest element. Then  $d_i$  in equation (5) is given by the sum of the various separation distances. The reflection coefficients  $R_1$  and  $R_2$  in equation (6) are real numbers with  $R_1 \approx -0.9$  and  $R_2 \approx 1$ . The best value of  $R_1$  for the antenna under investigation was determined by comparing the computed antenna response with CW measurements.

### 3.2. Analytical Computations of Antenna Response

If the amplitude of the CW excitation is held fixed over the frequencies of interest, the in-band response of the antenna necessarily is much greater than the out-of-band response; this difference is clearly indicated by the CW measurements shown in figure 4. Thus, since the major spectral content of the antenna's response is confined in a relatively narrow band, the inverse Fourier transform of the measured CW transfer function is a good approximation to the impulse response of the antenna. Once the impulse response has been computed, it is straightforward to obtain the transient response of the antenna for an EMP excitation with the same polarization and direction of propagation as the CW excitation used in the experiments. That is, we merely perform a convolution of the incident field in figure 7 with the impulse response which was computed, in turn, from the CW data shown in figure 4.

For an EMP vulnerability assessment, we are interested in the response of the antenna to a horizontally polarized EMP such as shown in figure 11, arriving at a given angle with respect to ground. To compute the antenna response, we compute the total incident field—i.e., the sum of the incident and ground reflected fields—and convolve this with the impulse response. Figure 12 shows the total incident field for an angle of incidence of 45 deg at a height of 10 m above ground. The response of the antenna to this field is shown in figure 13. The agreement is reasonably good, so that one might rely on the model predictions for a similar antenna in lieu of experimental data.

<sup>5</sup> D. E. Isbell, Log-Periodic Dipole Arrays, IRE Trans. Antennas and Propagation, AP-8 (May 1960), 260-267.

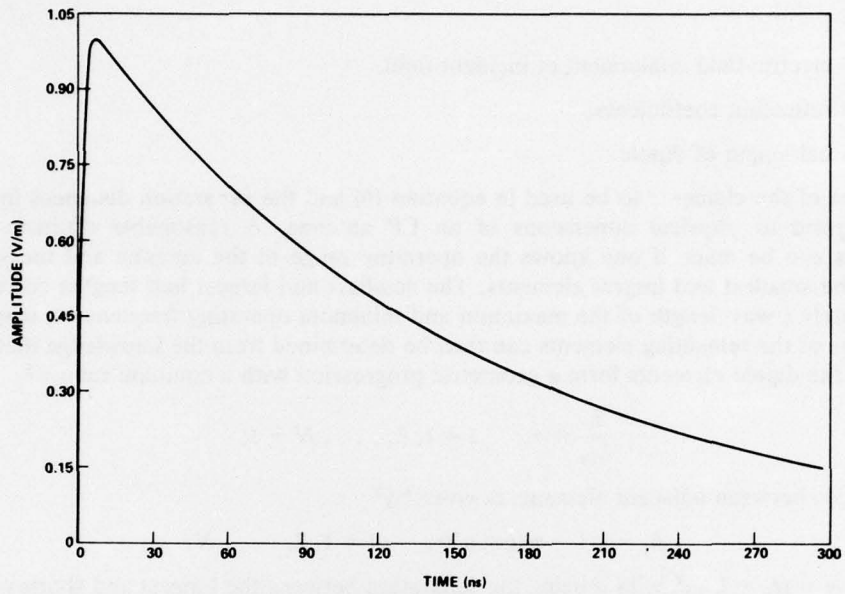


Figure 11. Incident electromagnetic pulse.

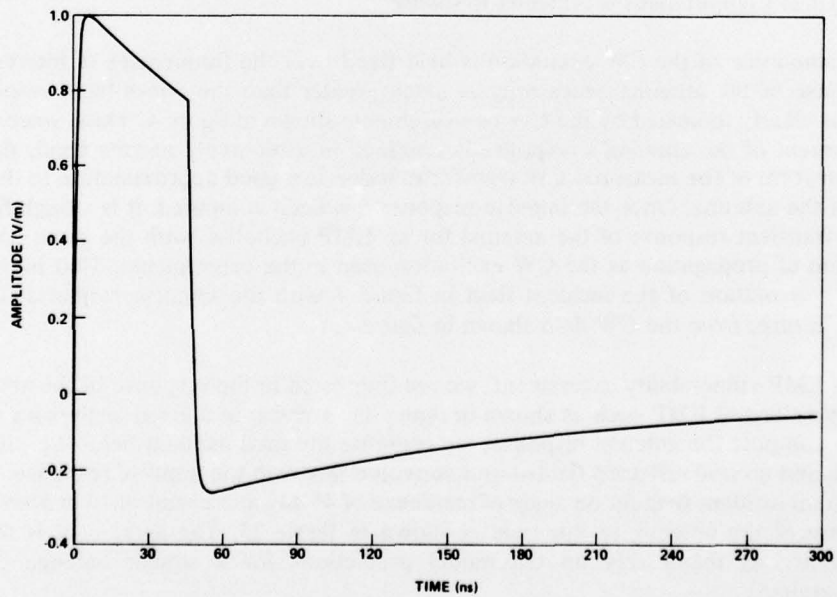


Figure 12. Total electromagnetic pulse after ground interaction.

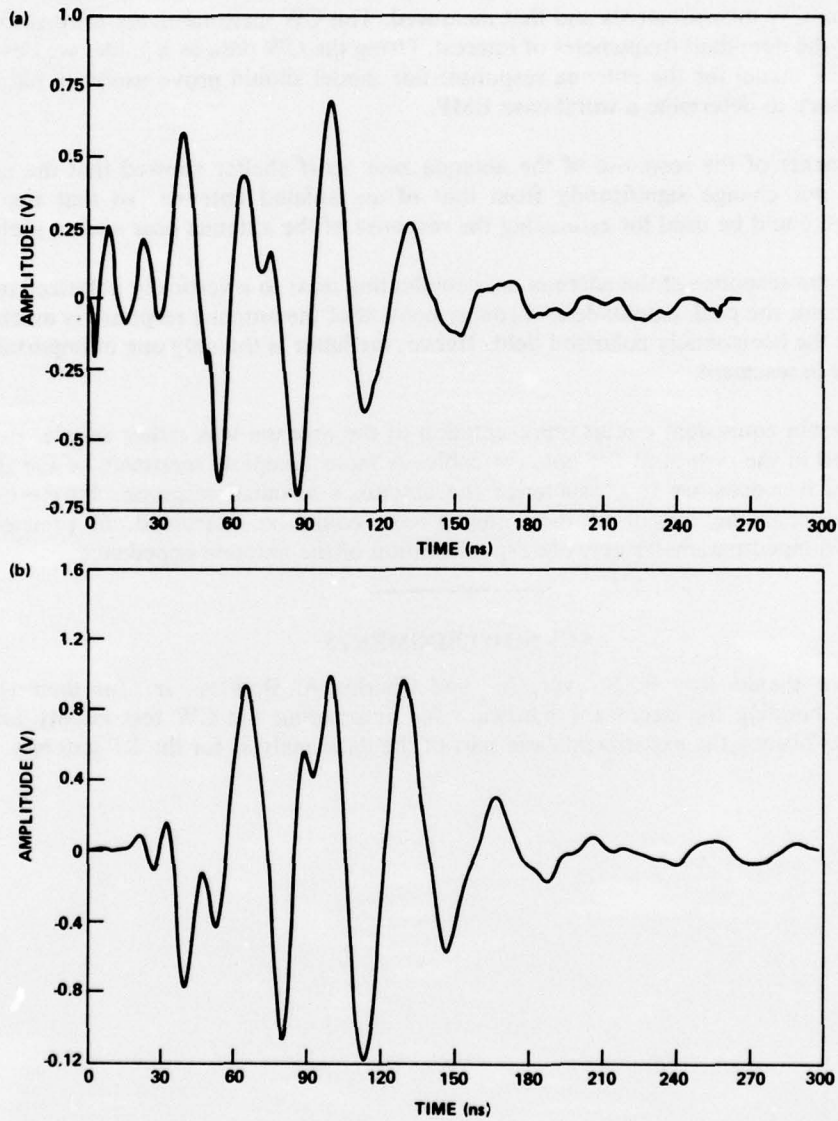


Figure 13. Log-periodic antenna transient response to total electromagnetic pulse: computed from (a) continuous-wave data and (b) analytical model.

#### 4. CONCLUSIONS AND RECOMMENDATIONS

The EMP response characteristics of LP antenna AS-2169 were determined from both CW and transient measurements. There was good agreement between the transient response computed from CW measurements and that measured. The CW measurements were sufficiently accurate over the dominant frequencies of interest. Using the CW data as a guide, we developed a semiempirical model for the antenna response; this model should prove useful in parametric studies necessary to determine a worst-case EMP.

Measurements of the response of the antenna near an rf shelter showed that the antenna response did not change significantly from that of an isolated antenna, so that the model developed here could be used for estimating the response of the antenna near such a shelter.

Although the response of the antenna on a conducting mast to a vertically polarized incident field is significant, the peak amplitude and energy content of the antenna response is much lower than those for the horizontally polarized field. Hence, the latter is the only one of importance for a vulnerability assessment.

The Thévenin equivalent circuit representation of the antenna was rather simple, since we were interested in the output at the antenna cable. A more complete treatment of the isolated antenna would be necessary to characterize the antenna's terminal response. Furthermore, a nonlinear load near the output of the antenna also could be addressed, in principle, by determining a lumped-parameter-network representation of the antenna impedance.

---

#### ACKNOWLEDGMENTS

The author thanks Roy E. Strayer, Jr., and Charles A. Berkley, Jr., for their work in designing and building the necessary hardware for automating the CW test facility and Mr. Berkley for performing the experiments and part of the data analysis for the LP antenna.

## APPENDIX A.

### APPROXIMATE RESPONSE OF A CYLINDRICAL DIPOLE ANTENNA

#### A-1. INTRODUCTION

These steps were used in deriving the solution to the problem of the dipole antenna:

1. Discuss how the current distribution on a driven two-wire transmission line is approximately analogous to the current distribution on a dipole antenna.
2. Derive the current distribution on the antenna using the transmission-line analogy.
3. Knowing the current distribution, compute the radiated fields.
4. Apply reciprocity to determine the received signals.

#### A-2. TRANSMISSION-LINE ANALOGY

Schelkunoff and Friis<sup>1</sup> discuss well how currents on a transmission line are analogous to currents on an antenna. Basically, one can show that the input impedance of a symmetric biconical antenna of any angle can be described in a similar manner as the input impedance of a uniform transmission line whose length equals the length of one antenna arm. The same similarity holds for antennas of other shapes such as cylindrical antennas, the main difference being nonuniformity of the equivalent line. Schelkunoff<sup>2</sup> has shown also that, for a cylindrical antenna, one can derive an average characteristic impedance which can be used in determining the input impedance of an antenna. This input impedance can be determined accurately by using nonuniform transmission-line theory; however, in the following discussion we will make a further approximation of applying uniform transmission-line theory for computing the antenna impedance.

#### A-3. CURRENT DISTRIBUTION ON DIPOLE ANTENNA

Consider a dipole antenna oriented along the  $x$ -axis as shown in figure A-1.

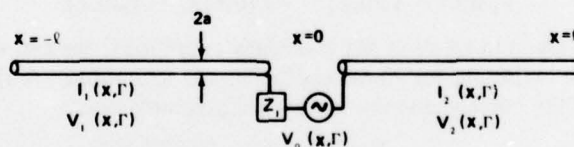


Figure A-1. Driven dipole antenna in free space.

From the symmetry of the problem, we can place a ground plane at  $x = 0$  perpendicular to the antenna, with voltages  $V_1$  and  $V_2$  being measured relative to this ground plane. Using the transmission-line analogy for the dipole, we have a termination impedance of  $Z_0/2$  at  $x = \pm l$  relative to this ground plane, where  $l$  is the half length of the dipole. With these assumptions, we

<sup>1</sup> S. A. Schelkunoff and H. T. Friis, *Antennas—Theory and Practice*, John Wiley and Sons, Inc., New York (1966).

<sup>2</sup> S. A. Schelkunoff, *Advanced Antenna Theory*, John Wiley and Sons, Inc., New York (1952).

## APPENDIX A

get the following general solutions for the currents and voltages:

$$I_1(x, \Gamma) = A_1 e^{-\Gamma x} - B_1 e^{\Gamma x} \quad (\text{A-1})$$

$$I_2(x, \Gamma) = A_2 e^{-\Gamma x} - B_2 e^{\Gamma x} \quad (\text{A-2})$$

$$V_1(x, \Gamma) = \frac{1}{2} Z_0 A_1 e^{-\Gamma x} + \frac{1}{2} Z_0 B_1 e^{\Gamma x} \quad (\text{A-3})$$

$$V_2(x, \Gamma) = \frac{1}{2} Z_0 A_2 e^{-\Gamma x} + \frac{1}{2} Z_0 B_2 e^{\Gamma x} \quad (\text{A-4})$$

where

$X$  = position along the antenna

$\Gamma = \sqrt{YZ}$ , propagation constant,

$\frac{1}{2} Z_0 = \sqrt{Z/Y}$ , characteristic impedance,

$A_{1,2}, B_{1,2}$  = unknown coefficients,

$Z, Y$  = impedance and admittance relative to ground plane.

Our approximation will be that we can represent  $\Gamma$  and  $Z_0$  as

$$\Gamma \approx \frac{j\omega}{c} + \alpha, \quad \text{propagation constant for lossy transmission line,}$$

$$Z_0 \approx 120 \left[ \ln \frac{2l}{a} - 1 \right], \quad \text{average characteristic impedance of cylindrical dipole.}$$

The boundary conditions for the problem are the following:

$$V_1(-l, \Gamma) = -I_1(-l, \Gamma) Z_0 / 2$$

$$V_2(l, \Gamma) = I_2(l, \Gamma) Z_0 / 2$$

$$I_1(0, \Gamma) = I_2(0, \Gamma)$$

$$V_2(0, \Gamma) - V_1(0, \Gamma) = -I_1(0, \Gamma) Z_1 + V_0(0, \Gamma).$$

Substituting equations (A-1) to (A-4) in the boundary conditions, we can solve for the unknown coefficients. Finally, substituting for these coefficients in equations (A-1) to (A-4), we get the desired expression for the current distribution on a dipole antenna:

$$I_1(x, \Gamma) = \frac{V_0(0, \Gamma) [e^{\Gamma x} - R_2 e^{-2\Gamma l} e^{-\Gamma x}]}{(Z_1 + Z_0) (1 - R_1 R_2 e^{-2\Gamma l})}, \quad (\text{A-5})$$

$$I_2(x, \Gamma) = \frac{V_0(0, \Gamma) [e^{-\Gamma x} - R_2 e^{-2\Gamma l} e^{\Gamma x}]}{(Z_1 + Z_0) (1 - R_1 R_2 e^{-2\Gamma l})}, \quad (\text{A-6})$$

where

$$R_{1,2} = \frac{Z_{1,2} - Z_0}{Z_{1,2} + Z_0}, \quad \text{reflection coefficients.}$$

## APPENDIX A

Many textbooks discuss the current distribution on a transmitting antenna in terms of a sinusoidal distribution:

$$\begin{aligned} I(x, \beta) &= I_0 \sin \beta(l - x), & x > 0, \\ &= I_0 \sin \beta(l + x), & x < 0, \end{aligned}$$

where

$$\beta = j\omega.$$

We can get this form from equations (A-5) and (A-6) if we let  $\Gamma = j\beta$ ,  $R_2 = 1$ , and

$$I_0 = \frac{2jV_0(0, \beta)}{(Z_1 + Z_0)(e^{j\beta l} - R_1 e^{-j\beta l})}, \quad \text{current at antenna terminals.}$$

Our solutions in equations (A-5) and (A-6) are, therefore, more complete in the sense that the effect of the radiation resistance of the dipole can be taken into account with  $R_2$  and that  $I_0$  includes the effect of the load impedance. The inclusion of this effect becomes important for the receive properties of a dipole antenna.

### A-4. RADIATED FIELDS FROM DIPOLE ANTENNA

In computing the radiated fields from a dipole antenna, we use a procedure discussed in many textbooks. First, we compute the vector potential knowing the current distribution on the dipole. Second, we get the magnetic field from

$$\vec{H} = \frac{1}{\mu_0} \vec{\nabla} \times \vec{A}, \quad (\text{A-7})$$

and the electric field vector,  $\vec{E}$ , from

$$\frac{\partial \vec{E}}{\partial t} = \frac{\vec{\nabla} \times \vec{H}}{\epsilon_0}. \quad (\text{A-8})$$

The vector potential from a given current distribution,  $I(x)$ , on the antenna can be written as

$$\vec{A}(\vec{r}) = \frac{\mu_0}{4\pi} \int \frac{I(\vec{x}') e^{-\Gamma|\vec{r}-\vec{x}'|}}{|\vec{r}-\vec{x}'|} d\vec{x}', \quad (\text{A-9})$$

where  $\vec{r}$  is the radius vector to the point of observation. This integral is usually solved in terms of a multipole expansion for the kernel

$$\frac{e^{-\Gamma|\vec{r}-\vec{x}'|}}{|\vec{r}-\vec{x}'|}.$$

In applying this solution to the dipole antenna shown in figure A-1, we are interested only in the radiation in the  $y-z$  plane at  $x = 0$  (in polar co-ordinates,  $\theta = \pi/2$ , using the  $x$ -axis as the polar axis). Then we get a simple expression for the vector potential in the dipole approximation:

$$A_x(x=0) = \frac{\mu_0}{4\pi} \frac{e^{-\Gamma r}}{r} \int_{-l}^l I(x') dx'. \quad (\text{A-10})$$

## APPENDIX A

Substituting for  $I(x')$  from equations (A-5) and (A-6), we get

$$A_x(x=0) = \frac{\mu_0 e^{-\Gamma r}}{2\pi r} \frac{V_0(0, \Gamma)}{(Z_L + Z_0)} \frac{[1 - (1 + R_2)e^{-\Gamma l} + R_2 e^{-2\Gamma l}]}{(1 - R_1 R_2 e^{-2\Gamma l})}. \quad (\text{A-11})$$

Using this vector potential in equation (A-7), we obtain

$$H_\phi(\theta=90^\circ) = \frac{\Gamma e^{-\Gamma r}}{2\pi r} I_0(0, \Gamma) \left(1 + \frac{1}{\Gamma r}\right) h(\Gamma, l, R_2), \quad (\text{A-12})$$

$$E_\theta(\theta=90^\circ) = \frac{\eta_0 \Gamma e^{-\Gamma r}}{2\pi r} I_0(0, \Gamma) \left[1 + \frac{1}{\Gamma r} + \frac{1}{(\Gamma r)^2}\right] h(\Gamma, l, R_2), \quad (\text{A-13})$$

where

$$I_0(0, \Gamma) = \frac{V_0(0, \Gamma)}{(Z_L + Z_A)}, \quad (\text{A-14})$$

$$Z_A = Z_0 \frac{1 + R e^{-2\Gamma l}}{1 - R e^{-2\Gamma l}}. \quad (\text{A-15})$$

$\eta_0$  = free-space wave impedance

$$h(\Gamma, l, R_2) = \frac{1}{\Gamma} \frac{[1 - (1 + R_2)e^{-\Gamma l} + R_2 e^{-2\Gamma l}]}{(1 - R_2 e^{-2\Gamma l})}. \quad (\text{A-16})$$

### A-5. RECEIVED SIGNALS OF CYLINDRICAL DIPOLE ANTENNA

The radiated far field of an antenna can be written in the form<sup>3</sup>

$$\vec{E} = \frac{j\beta\eta_0 I_0 e^{-j\beta r}}{4\pi} \vec{H}, \quad (\text{A-17})$$

where

$I_0$  = current at the antenna terminals,

$\vec{H}$  = effective vector length of the antenna.

Then the open-circuit received voltage<sup>4</sup> ( $V_{oc}$ ) is given by

$$V_{oc} = \vec{E} \cdot \vec{H}. \quad (\text{A-18})$$

Equation (A-13) reduces to the form shown in equation (A-17) if we consider the far-field term only and let  $\Gamma = j\beta$  and  $2h\vec{i} = \vec{H}$  where  $\vec{i}$  is a unit vector along the  $x$ -axis.

It is interesting to compare our solutions for the antenna height and antenna impedance with more complete solutions based on nonuniform transmission-line theory. The major differences are that, for the nonuniform transmission-line theory, we can obtain an accurate expression for

<sup>3</sup> G. Sinclair, The Transmission and Reception of Elliptically Polarized Waves, Proc. IRE, 38 (February 1950), 148-151.

<sup>4</sup> R. E. Collin, The Receiving Antenna, Antenna Theory, Part 1, edited by R. E. Collin and F. J. Zucker, McGraw-Hill, Inc., New York (1969), 105.

## APPENDIX A

$R_2$  in equations (A-15) and (A-16), whereas from uniform transmission-line theory we expect a value of  $R_2 \approx 1$ . Using  $R_2 = 1$  and  $\Gamma = j\beta$  in equation (A-16), we obtain the well-known effective length of an electrically small dipole antenna:

$$h = \frac{1}{\beta} \frac{(1 - \cos \beta l)}{\sin \beta l}.$$

In our approximation, the antenna impedance and the effective height are given by equations (A-15) and (A-16), respectively. Using equation (A-18), we obtain the expressions for the received current at the load impedance,

$$I_L(j\omega) = \frac{2E_x h}{Z_L + Z_A}, \quad (\text{A-19})$$

and for the received voltage at the load impedance,

$$V_L(j\omega) = I_L(j\omega)Z_L. \quad (\text{A-20})$$

This solution can be rewritten in terms of  $R_1$  and  $R_2$  as

$$I_L(j\omega) = \frac{E(j\omega)}{\Gamma Z_0} (1 - R_1) \frac{[1 - (1 + R_2)e^{-\Gamma l} + R_2 e^{-2\Gamma l}]}{(1 - R_1 R_2 e^{-2\Gamma l})}, \quad (\text{A-21})$$

$$V_L(j\omega) = \frac{E(j\omega)}{\Gamma} (1 + R_1) \frac{[1 - (1 + R_2)e^{-\Gamma l} + R_2 e^{-2\Gamma l}]}{(1 - R_1 R_2 e^{-2\Gamma l})}. \quad (\text{A-22})$$

DISTRIBUTION

DEFENSE DOCUMENTATION CENTER  
CAMERON STATION, BUILDING 5  
ALEXANDRIA, VA 22314  
ATTN DDC-TCA (12 COPIES)

COMMANDER  
USA RSCH & STD GP (EUR)  
BOX 65  
PPO NEW YORK 09510  
ATTN LTC JAMES M. KENNEDY, JR.  
CHIEF, PHYSICS & MATH BRANCH

COMMANDER  
US ARMY MATERIEL DEVELOPMENT  
& READINESS COMMAND  
5001 EISENHOWER AVENUE  
ALEXANDRIA, VA 22333  
ATTN DRXAM-TL, HQ TECH LIBRARY

COMMANDER  
USA ARMAMENT COMMAND  
ROCK ISLAND, IL 61201  
ATTN DRSAR-ASF, FUZE DIV  
ATTN DRSAR-RDF, SYS DEV DIV - FUZES

COMMANDER  
USA MISSILE & MUNITIONS CENTER  
& SCHOOL  
REDSTONE ARSENAL, AL 35809  
ATTN ATSK-CTD-F

COMMANDER IN CHIEF  
US EUROPEAN COMMAND, JCS  
APO NEW YORK 09128  
ATTN TECHNICAL LIBRARY

DIRECTOR  
DEFENSE ADVANCED RSCH PROJ AGENCY  
ARCHITECT BUILDING  
1400 WILSON BLVD.  
ARLINGTON, VA 22209  
ATTN AD/E&PS GEORGE H. HALMEIER  
ATTN TECHNICAL LIBRARY

DIRECTOR  
DEFENSE CIVIL PREPAREDNESS AGENCY  
ASSISTANT DIRECTOR FOR RESEARCH  
WASHINGTON, DC 20301  
ATTN TS(AED), ROOM 1C 535  
ATTN ADMIN OFFICER  
ATTN RE(E0)

DEFENSE COMMUNICATION ENGINEER CENTER  
1860 WIEHLE AVENUE  
RESTON, VA 22090  
ATTN CODE R720, C. STANSBERRY  
ATTN CODE R400  
ATTN CODE R124C, TECH LIB

DIRECTOR  
DEFENSE COMMUNICATIONS AGENCY  
WASHINGTON, DC 20305  
ATTN CODE 540.5  
ATTN CCTC/C672, FRANKLIN D. MOORE  
ATTN CODE 930, MONTE I. BURGETT, JR.

DIRECTOR  
DEFENSE NUCLEAR AGENCY  
WASHINGTON, DC 20305  
ATTN RATN  
ATTN DDST  
ATTN RAEV  
ATTN STTL TECH LIBRARY  
ATTN STSI ARCHIVES  
ATTN STVL

DIRECTOR OF DEFENSE RESEARCH  
& ENGINEERING  
DEPARTMENT OF DEFENSE  
WASHINGTON, DC 20301  
ATTN DD/S&SS

COMMANDER  
FIELD COMMAND  
DEFENSE NUCLEAR AGENCY  
KIRTLAND AFB, NM 87115  
ATTN FCPR  
ATTN FCSM-F3, CDR SMITH

DIRECTOR  
INTERSERVICE NUCLEAR WEAPONS SCHOOL  
KIRTLAND AFB, NM 87115  
ATTN TECH LIB  
ATTN DOCUMENT CONTROL

DIRECTOR  
JOINT STRATEGIC TARGET PLANNING  
STAFF, JCS  
OFFUTT AFB  
OMAHA, NB 68113  
ATTN STINPO LIBRARY  
ATTN JSAS  
ATTN JPST

CHIEF  
LIVERMORE DIVISION, FIELD COMMAND DNA  
LAWRENCE LIVERMORE LABORATORY  
P.O. BOX 808  
LIVERMORE, CA 94550  
ATTN FCPRL

NATIONAL COMMUNICATIONS SYSTEM  
OFFICE OF THE MANAGER  
WASHINGTON, DC 20305  
ATTN NCS-TS, CHARLES D. BODSON

NATIONAL COMMUNICATIONS SYSTEM  
OFFICE OF THE MANAGER  
WASHINGTON, DC 20305  
ATTN NCS-TS, CHARLES D. BODSON

DIRECTOR  
NATIONAL SECURITY AGENCY  
FT. GEORGE G. MEADE, MD 20755  
ATTN O. O. VAN GUNTEN-R-425  
ATTN TECHNICAL LIBRARY

OJCS/J-6  
THE PENTAGON  
WASHINGTON, DC 20301  
(COMMUNICATIONS-ELECTRONICS)  
ATTN J-6, ESD-2

PROJECT MANAGER  
ARMY TACTICAL DATA SYSTEMS  
US ARMY ELECTRONICS COMMAND  
FORT MONMOUTH, NJ 07703  
ATTN DWAIN B. HUEWE

DIRECTOR  
BMD ADVANCED TECH CTR  
HUNTSVILLE OFFICE  
PO BOX 1500  
HUNTSVILLE, AL 35807  
ATTN TECH LIB

COMMANDER  
BMD SYSTEM COMMAND  
PO BOX 1500  
HUNTSVILLE, AL 35807  
ATTN TECHNICAL LIBRARY  
ATTN BDMSC-TEN, NOAH J. HURST

DEP CHIEF OF STAFF FOR RSCH DEV & ACQ  
DEPARTMENT OF THE ARMY  
WASHINGTON, DC 20310  
ATTN DAMA-CSM-N, LTC G. OGDEN

COMMANDER  
PICATINNY ARSENAL  
DOVER, NJ 07801  
ATTN SARPA-ND-D-B, EDWARD J. ARBER  
ATTN PAUL HARRIS  
ATTN SARPA-FR-S-P  
ATTN SARPA-ND-D-C-2  
ATTN SARPA-ND-W  
ATTN SARPA-ND-DA-4  
ATTN SARPA-TN, BURTON V. FRANKS  
ATTN TECHNICAL LIBRARY  
ATTN SARPA-FR-S-P, LESTER W. DOREMUS  
ATTN HYMAN POSTERNAK  
ATTN SARPA-FR-E, LOUIS AVRAMI  
ATTN SARPA-TS-T-E, ABRAHAM GRINCOH

COMMANDER  
TRASANA  
WHITE SANDS MISSILE RANGE, NM 88002  
ATTN ATAA-EAC, FRANCIS N. WINANS

COMMANDER  
US ARMY ARMOR CENTER  
FORT KNOX, KY 40121  
ATTN TECHNICAL LIBRARY

CHIEF  
US ARMY COMMUNICATIONS SYSTEMS AGENCY  
FORT MONMOUTH, NJ 07703  
ATTN SCCM-AD-SV (LIBRARY)

COMMANDER  
US ARMY COMPUTER SYSTEMS COMMAND  
FORT BELVOIR, VA 22060  
ATTN TECHNICAL LIBRARY

COMMANDER  
US ARMY ELECTRONICS COMMAND  
FORT MONMOUTH, NJ 07703  
ATTN DRSEL-CT-HDK, ABRAHAM E. COHEN  
ATTN DRSEL-CE, T. PREIFFER  
ATTN DRSEL-TL-MD, GERHART K. GAULE  
ATTN DRSEL-GG-TD, W. R. WERK  
ATTN DRSEL-TL-ENV, HANS A. BOMKE  
ATTN DRSEL-TL-ME, M. W. POMERANTZ  
ATTN DRSEL-TL-IR, ROBERT A. FREIBERG  
ATTN DRSEL-WL-D  
ATTN DRSEL-NL-D  
ATTN DRSEL-TL-IR, EDWIN T. HUNTER  
ATTN DRSEL-TL-EN, ROBERT LUX

COMMANDER-IN-CHIEF  
US ARMY EUROPE AND SEVENTH ARMY  
APO NEW YORK 09403  
(HEIDELBERG)  
ATTN TECHNICAL LIBRARY

DIRECTOR  
US ARMY MATERIAL SYS ANALYSIS AGCY  
ABERDEEN PROVING GROUND, MD 21005  
ATTN TECHNICAL LIBRARY  
ATTN DRXS-CC, MR. DONALD R. BARTHEL

COMMANDER  
US ARMY MISSILE COMMAND  
REDSTONE ARSENAL, AL 35809  
ATTN DRSMI-RGP, HUGH GREEN  
ATTN DRCPM-LCEX, HOWARD H. HENRIKSEN  
ATTN DRCPM-PE-EA, WALLACE O. WAGNER  
ATTN DRSI-RGP, VICTOR W. RUWE

DISTRIBUTION (Cont'd)

COMMANDER  
US ARMY MOBILITY EQUIPMENT  
R & D CENTER  
FORT BELVOIR, VA 22060  
ATTN STSFB-MW, JOHN W. BOND, JR.  
ATTN TECHNICAL LIBRARY  
ATTN SMEFB-ES, ROBERT S. BRANTLY, JR

COMMANDER  
US ARMY NUCLEAR AGENCY  
FORT BLISS, TX 79916  
ATTN ATCN-W, LTC LEONARD A. SLUGA  
ATTN TECH LIB  
ATTN COL. DEVERILL

COMMANDER  
US ARMY SECURITY AGENCY  
ARLINGTON HALL STATION  
4000 ARLINGTON BLVD  
ARLINGTON, VA 22212  
ATTN TECHNICAL LIBRARY

COMMANDER  
US ARMY TEST AND EVALUATION COMMAND  
ABERDEEN PROVING GROUND, MD 21005  
ATTN DRSTE-EL, RICHARD I. KOLCHIN  
ATTN DRSTE-NB, R. R. GALASSO  
ATTN TECHNICAL LIBRARY

COMMANDER  
US ARMY TRAINING AND DOCTRINE COMMAND  
FORT MONROE, VA 23651  
ATTN TECH LIBRARY

COMMANDER  
WHITE SANDS MISSILE RANGE  
WHITE SANDS MISSILE RANGE, NM 88002  
ATTN TECHNICAL LIBRARY  
ATTN STEWS-TE-NT,  
MR. MARVIN P. SQUIRES  
ATTN STEWS-TE-AN, A. DE LA PAZ

CHIEF OF NAVAL OPERATIONS  
NAVY DEPARTMENT  
WASHINGTON, DC 20350  
ATTN CODE 604C3, ROBERT PIACESI

CHIEF OF NAVAL RESEARCH  
DEPARTMENT OF THE NAVY  
ARLINGTON, VA 22217  
ATTN TECHNICAL LIBRARY  
ATTN CODE 464, R. GRACEN JOINER  
ATTN CODE 427  
ATTN CODE 464, THOMAS P. QUINN

OFFICER-IN-CHARGE  
CIVIL ENGINEERING LABORATORY  
NAVAL CONSTRUCTION BATTALION CENTER  
FORT HUENEME, CA 93041  
ATTN CODE L31

COMMANDER  
NAVAL AIR SYSTEMS COMMAND  
HEADQUARTERS  
WASHINGTON, DC 21360  
ATTN TECH LIB  
ATTN AIR-350F, LCDR HUGO HART

COMMANDER  
NAVAL ELECTRONIC SYSTEMS COMMAND  
HEADQUARTERS  
WASHINGTON, DC 20360  
ATTN TECH LIB  
ATTN PME-117-T

NAVAL ELECTRONIC SYS COMMAND (Cont'd)  
ATTN PME 117-21  
ATTN PME117-215A, GUNTER BRUNHART  
ATTN ELEX 05323, CLEVELAND F. WATKINS

COMMANDER  
NAVAL ELECTRONICS LABORATORY CENTER  
SAN DIEGO, CA 92152  
ATTN CODE 2400, S. W. LICHTMAN  
ATTN CODE 2200 1, VERNE E. HILDEBRAND  
ATTN CODE 3100, E. E. MCCOWN  
ATTN TECHNICAL LIBRARY

COMMANDING OFFICER  
NAVAL INTELLIGENCE SUPPORT CENTER  
4301 SUTLAND ROAD, BLDG 5  
WASHINGTON, DC 20390  
ATTN TECHNICAL LIBRARY  
ATTN NISC-45

SUPERINTENDENT  
NAVAL POSTGRADUATE SCHOOL  
MONTEREY, CA 93940  
ATTN CODE 2124, TECH RPTS LIBRARIAN

DIRECTOR  
NAVAL RESEARCH LABORATORY  
WASHINGTON, DC 20375  
ATTN CODE 6631, JAMES C. RITTER  
ATTN CODE 7706, JAY P. BORIS  
ATTN CODE 4004, EMANUAL L. BRANCATO  
ATTN CODE 2027, TECH LIB  
ATTN CODE 2627, DORIS R. FOLEN  
ATTN CODE 7701, JACK D. BROWN

COMMANDER  
NAVAL SEA SYSTEMS COMMAND  
NAVY DEPARTMENT  
WASHINGTON, DC 20362  
ATTN SEA-9931, RILEY B. LANE

COMMANDER  
NAVAL SURFACE WEAPONS CENTER  
WHITE OAK, SILVER SPRING, MD 20910  
ATTN CODE 431, EDWIN B. DEAN  
ATTN CODE WX21, TECH LIB  
ATTN CODE WA501, NAVY NUC PRGMS OFF  
ATTN CODE 431, EDWIN R. RATHBURN  
ATTN CODE WA50, JOHN H. MALLOY  
ATTN CODE 223, L. LIBELLO  
ATTN CODE WR43

COMMANDER  
NAVAL SURFACE WEAPONS CENTER  
DAHLGREN LABORATORY  
DAHLGREN, VA 22448  
ATTN TECHNICAL LIBRARY  
ATTN CODE FUR, ROBERT A. AMADORI  
ATTN CODE GER, RICHARD C. VANWAGONER

COMMANDING OFFICER  
NAVAL WEAPONS EVALUATION FACILITY  
KIRTLAND AIR FORCE BASE  
ALBUQUERQUE, NM 87117  
ATTN LAWRENCE R. OLIVER  
ATTN CODE ATG, MR. STANLEY

COMMANDING OFFICER  
NAVAL WEAPONS SUPPORT CENTER  
CRANE, IN 47522  
ATTN TECHNICAL LIBRARY  
ATTN CODE 7024, JAMES RAMSEY

DIRECTOR  
STRATEGIC SYSTEMS PROJECT OFFICE  
NAVY DEPARTMENT  
WASHINGTON, DC 20376  
ATTN SP2701, JOHN W. PITSENBERGER  
ATTN NSP-2342, RICHARD L. COLEMAN  
ATTN NSP-43, TECH LIB  
ATTN NSP-230, DAVID GOLD

COMMANDER  
ADC/DE  
ENT AFB, CO 80912  
ATTN DEEDS, JOSEPH C. BRANNAN

COMMANDER  
ADCOM/XPD  
ENT AFB, CO 80912  
ATTN XPQDQ, MAJ G. KUCH  
ATTN XPDQ

AF GEOPHYSICS LABORATORY, AFSC  
HANSCOM AFB, MA 01731  
ATTN J. EMERY CORMIER

AF WEAPONS LABORATORY, AFSC  
KIRTLAND AFB, NM 87117  
ATTN EL, MR. JOHN DARRAH  
ATTN DYX, DONALD C. WUNSCH  
ATTN SAT  
ATTN ELA  
ATTN ELC  
ATTN ELP, CARL E. BAUM  
ATTN EL  
ATTN SAS  
ATTN SUL  
ATTN ELA, J. P. CASTILLO  
ATTN EL (LIBRARY)

AFTAC  
PATRICK AFB, FL 32925  
ATTN TECH LIB

HEADQUARTERS  
AIR FORCE SYSTEMS COMMAND  
ANDREWS AFB  
WASHINGTON, DC 20331  
ATTN TECHNICAL LIBRARY

COMMANDER  
AIR UNIVERSITY  
MAXWELL AFB, AL 36112  
ATTN AUL/LSE-70-250

COMMANDER  
ASD  
WPafb, OH 45433  
ATTN ENFTV  
ATTN ASD-YH-EX

HEADQUARTERS  
ELECTRONIC SYSTEMS DIVISION, (AFSC)  
HANSCOM AFB, MA 01731  
ATTN YWEI  
ATTN TECHNICAL LIBRARY  
ATTN XRT, LTC JOHN M. JASINSKI  
ATTN YSEV

COMMANDER  
FOREIGN TECHNOLOGY DIVISION, AFSC  
WRIGHT-PATTERSON AFB, OH 45433  
ATTN TD-BTA, LIBRARY  
ATTN ETET, CAPT RICHARD C. HUSEMANN

DISTRIBUTION (Cont'd)

HQ USAF/RD  
WASHINGTON, DC 20330  
ATTN RDQPN

COMMANDER  
OGDEN AIR LOGISTICS CENTER  
HILL AFB, UT 84401  
ATTN TECH LIB  
ATTN MMEWM, ROBERT JOFFS

COMMANDER  
ROME AIR DEVELOPMENT CENTER, AFSC  
GRIFFISS AFB, NY 13440  
ATTN EMTLD, DOC LIBRARY

COMMANDER  
SACRAMENTO AIR LOGISTICS CENTER  
MCCLELLAN AFB, CA 95652  
ATTN MMEAE, STEPHEN C. ANDREWS

SAMSO/DY  
POST OFFICE BOX 92960  
WORLDWAY POSTAL CENTER  
LOS ANGELES, CA 90009  
(TECHNOLOGY)  
ATTN DYS, MAJ LARRY A. DARDA

SAMSO/MN  
NORTON AFB, CA 92409  
(MINUTEMAN)  
ATTN MNNH, CAPT B. STEWART  
ATTN MNH, MAJ M. BARAN

SAMSO/SK  
POST OFFICE BOX 92960  
WORLDWAY POSTAL CENTER  
LOS ANGELES, CA 90009  
(SPACE COMM SYSTEMS)  
ATTN SKF, PETER H. STADLER

COMMANDER IN CHIEF  
STRATEGIC AIR COMMAND  
OFFUTT AFB, NE 68113  
ATTN NRI-STINFO LIBRARY  
ATTN DEF, FRANK N. BOUSHA  
ATTN XFFS, MAJ BRIAN STEPHAN

DIVISION OF MILITARY APPLICATION  
US ENERGY RSCH & DEV ADMIN  
WASHINGTON, DC 20545  
ATTN DOC CON FOR CLASS TECH LIB

EG&G, INC.  
LOS ALAMOS DIVISION  
PO BOX 809  
LOS ALAMOS, NM 85544  
ATTN TECH LIB

LOS ALAMOS SCIENTIFIC LABORATORY  
P.O. BOX 1663  
LOS ALAMOS, NM 87544  
ATTN DOC CONTROL FOR REPORTS LIBRARY  
ATTN DOC CON FOR ARTHUR FREED  
ATTN DOC CON FOR RICHARD L. WAKEFIELD  
ATTN DOC CON FOR P. W. KEATON  
ATTN DOC CON FOR J-8, R. E. FARTRIDGE  
ATTN DOC CON FOR JOHN S MALIK

SANDIA LABORATORIES  
PO BOX 5800  
ALBUQUERQUE, NM 87115  
ATTN DOC CON FOR ORD 9353,  
R. L. PARKER  
ATTN DIV 5231, JAMES H. RENKEN  
ATTN DOC CON FOR 5245, T. H. MARTIN

SANDIA LABORATORIES (Cont'd)  
ATTN DOC CON FOR  
GERALD W. BARR, 1114  
ATTN DOC CON FOR 3141 SANDIA  
RPT COLL  
ATTN DOC CON FOR ELMER F. HARTMAN

UNION CARBIDE CORPORATION  
HOLIFIELD NATIONAL LABORATORY  
P.O. BOX X  
OAK RIDGE, TN 37830  
ATTN PAUL R. BARNES  
ATTN DOC CON FOR TECH LIBRARY

UNIVERSITY OF CALIFORNIA  
LAWRENCE LIVERMORE LABORATORY  
PO BOX 808  
LIVERMORE, CA 94550  
ATTN HANS KRUGER, L-96  
ATTN WILLIAM J. HOGAN, L-531  
ATTN TERRY R. DONICH, L-96  
ATTN LELAND C. LOQUIST, L-154  
ATTN FREDERICK R. KOVAR, L-31  
ATTN E. K. MILLER, L-156  
ATTN DONALD J. MEEKER, L-545  
ATTN L-153, ROBERT A. ANDERSON  
ATTN TECH INFO DEPT, L-3  
ATTN LOUIS F. WOUTERS, L-48  
ATTN DONALD W. VOLLMER, L-154

AERONUTRONIC FORD CORPORATION  
AEROSPACE & COMMUNICATIONS OPS  
AERONUTRONIC DIVISION  
FORD & JAMBOREE ROADS  
NEWPORT BEACH, CA 92663  
ATTN E. R. PONCELET, JR.  
ATTN KEN C. ATTINGER  
ATTN TECH INFO SECTION

AEROSPACE CORPORATION  
PO BOX 92957  
LOS ANGELES, CA 90009  
ATTN C. B. PEARLSTON  
ATTN IRVING M. GARFUNKEL  
ATTN JULIAN REINHHEIMER  
ATTN LIBRARY  
ATTN MELVIN J. BERNSTEIN  
ATTN S. P. BOWER  
ATTN NORMAN D. STOCKWELL  
ATTN BAL KRISHAN  
ATTN J. BENVENISTE  
ATTN RICHARD CROLIUS, A2-RM1027

BATTELLE MEMORIAL INSTITUTE  
505 KING AVENUE  
COLUMBUS, OH 43201  
ATTN TECHNICAL LIBRARY

BDM CORPORATION, THE  
1920 ALINE AVE  
VIENNA, VA 22180  
ATTN TECHNICAL LIBRARY  
ATTN T. H. NEIGHBORS

BDM CORPORATION, THE  
PO BOX 9274  
ALBUQUERQUE INTERNATIONAL  
ALBUQUERQUE, NM 87119  
ATTN TECH LIB

BOEING COMPANY, THE  
PO BOX 3707  
SEATTLE, WA 98124  
ATTN HOWARD W. WICKLEIN, MS 17-11  
ATTN D. E. ISBELL

BOEING COMPANY (Cont'd)  
ATTN DAVID DYE, MS 87-75  
ATTN DAVID KEMLE  
ATTN AEROSPACE LIBRARY

BOOZ-ALLEN AND HAMILTON, INC.  
106 APPLE STREET  
NEW SHREWSBURY, NJ 07724  
ATTN TECH LIB  
ATTN R. J. CHRISNER

BROWN ENGINEERING COMPANY, INC.  
CUMMINGS RESEARCH PARK  
HUNTSVILLE, AL 35807  
ATTN JOHN M, MCSWAIN, MS 18  
ATTN TECH LIB, MS12, P. SHELTON

BURROUGHS CORPORATION  
FEDERAL AND SPECIAL SYSTEMS GROUP  
CENTRAL AVE AND ROUTE 252  
PO BOX 517  
PAOLI, PA 19301  
ATTN ANGELO J. MAURIELLO  
ATTN TECH LIB

CALSPAN CORPORATION  
PO BOX 235  
BUFFALO, NY 14221  
ATTN TECH LIBRARY

CHARLES STARK DRAPER LABORATORY INC.  
68 ALBANY STREET  
CAMBRIDGE, MA 02139  
ATTN TECH LIB  
ATTN KENNETH FERTIG

CINCINNATI ELECTRONICS CORPORATION  
2630 GLENDALE - MILFORD ROAD  
CINCINNATI, OH 45241  
ATTN C. R. STUMP

COMPUTER SCIENCES CORPORATION  
P.O. BOX 530  
6565 ARLINGTON BLVD  
FALLS CHURCH, VA 22046  
ATTN TECH LIB

COMPUTER SCIENCES CORPORATION  
201 LA VETA DRIVE, NE  
ALBUQUERQUE, NM 87108  
ATTN RICHARD H. DICKHAUT  
ATTN ALVIN SCHIFF

CUTLER-HAMMER, INC.  
AII DIVISION  
COMAC ROAD  
DEER PARK, NY 11729  
ATTN CENTRAL TECH FILES, ANN ANTHONY

DENVER, UNIVERSITY OF  
COLORADO SEMINARY  
DENVER RESEARCH INSTITUTE  
PO BOX 10127  
DENVER, CO 80210  
ATTN SEC OFFICER FOR FRED P. VENDITTI

DIKEWOOD CORPORATION, THE  
1009 BRADBURY DRIVE, SE  
UNIVERSITY RESEARCH PARK  
ALBUQUERQUE, NM 87106  
ATTN TECH LIB  
ATTN L. WAYNE DAVIS  
ATTN K. LEE

DISTRIBUTION (Cont'd)

EG&G, INC.  
ALBUQUERQUE DIVISION  
PO BOX 10218  
ALBUQUERQUE, NM 87114  
ATTN TECHNICAL LIBRARY  
ATTN HILDA H. HOFFMAN

ESL, INC.  
495 JAVA DRIVE  
SUNNYVALE, CA 94086  
ATTN TECHNICAL LIBRARY

EXP AND MATH PHYSICS CONSULTANTS  
P. O. BOX 66331  
LOS ANGELES, CA 90066  
ATTN THOMAS M. JORDAN

GARRETT CORPORATION  
PO BOX 92248  
LOS ANGELES, CA 90009  
ATTN ROBT. WEIR, DEPT. 93-9  
ATTN TECH LIB

GENERAL ELECTRIC COMPANY  
ORDNANCE SYSTEMS  
100 PLASTICS AVENUE  
PITTSFIELD, MA 01201  
ATTN JOSEPH J. REIDL

GENERAL ELECTRIC COMPANY  
TEMPO-CENTER FOR ADVANCED STUDIES  
816 STATE STREET (PO DRAWER QQ)  
SANTA BARBARA, CA 93102  
ATTN DASIAC  
ATTN ROYDEN R. RUTHERFORD

GENERAL ELECTRIC COMPANY  
AEROSPACE ELECTRONICS SYSTEMS  
FRENCH ROAD  
UTICA, NY 13503  
ATTN CHARLES M. HEWISON, DROP 624  
ATTN W. J. PATTERSON, DROP 233

GENERAL ELECTRIC COMPANY  
PO BOX 5000  
BINGHAMTON, NY 13902  
ATTN DAVID W. PEPIN, DROP 160

GENERAL ELECTRIC COMPANY-TEMPO  
ATTN: DASIAC  
C/O DEFENSE NUCLEAR AGENCY  
WASHINGTON, DC 20305  
ATTN WILLIAM ALFONTE

GENERAL RESEARCH CORPORATION  
P.O. BOX 3587  
SANTA BARBARA, CA 93105  
ATTN TECH INFO OFFICE  
ATTN JOHN ISE, JR.

GEORGIA INSTITUTE OF TECHNOLOGY  
GEORGIA TECH RESEARCH INSTITUTE  
ATLANTA, GA 30332  
ATTN R. CURRY

GTE SYLVANIA, INC.  
ELECTRONICS SYSTEMS GRP-EASTERN DIV  
77 A STREET  
NEEDHAM, MA 02194  
ATTN CHARLES A. THORNHILL, LIBRARIAN  
ATTN LEONARD L. BLAISDELL  
ATTN JAMES A. WALDON

GTE SYLVANIA, INC.  
189 B STREET  
NEEDHAM HEIGHTS, MA 02194  
ATTN CHARLES H. RAMSBOTTOM  
ATTN A S M DEPT, S. E. PERLMAN  
ATTN DAVID P. FLOOD  
ATTN COMM SYST DIV, EMIL P. MOTCHOK  
ATTN HERBERT A. ULLMAN  
ATTN H & V GROUP, MARIO A. NUREFORA

HARRIS CORPORATION  
HARRIS SEMICONDUCTOR DIVISION  
P.O. BOX 883  
MELBOURNE, FL 32901  
ATTN C. F. DAVIS, MS 17-220  
ATTN WAYNE E. ABARE, MS 16-111  
ATTN T. CLARK, MS 4040  
ATTN TECH LIB  
ATTN CHARLES DENTON, JR., MS 1-500

HONEYWELL INCORPORATED  
GOVERNMENT AND AERONAUTICAL  
PRODUCTS DIVISION  
2600 RIDGEWAY PARKWAY  
MINNEAPOLIS, MN 55413  
ATTN RONALD R. JOHNSON, A1622

HONEYWELL INCORPORATED  
AEROSPACE DIVISION  
13350 U.S. HIGHWAY 19  
ST. PETERSBURG, FL 33733  
ATTN TECHNICAL LIBRARY  
ATTN MS 725-J, STACEY H. GRAFF  
ATTN HARRISON E. NOBLE, MS 725-5A

HUGHES AIRCRAFT COMPANY  
CENTINELA & TEALE  
CULVER CITY, CA 90230  
ATTN M.S. D157, KEN WALKER  
ATTN JOHN B. SINGLETARY, MS 6-D133

IIT RESEARCH INSTITUTE  
10 WEST 35TH STREET  
CHICAGO, IL 60616  
ATTN TECHNICAL LIBRARY  
ATTN JACK E. BRIDGES  
ATTN IRVING N. MINDEL

INSTITUTE FOR DEFENSE ANALYSES  
400 ARMY-NAVY DRIVE  
ARLINGTON, VA 22202  
ATTN IDA, LIBRARIAN, RUTH S. SMITH

ION PHYSICS CORPORATION  
SOUTH BEDFORD STREET  
BURLINGTON, MA 01803  
ATTN H. MILDE  
ATTN ROBERT D. EVANS

IRT CORPORATION  
PO BOX 81087  
SAN DIEGO, CA 92138  
ATTN TECHNICAL LIBRARY  
ATTN MDC  
ATTN R. L. MERTZ

JAYCOR  
1401 CAMINO DEL MAR  
DEL MAR, CA 92014  
ATTN ERIC P. WEENAS  
ATTN RALPH H. STAHL

JAYCOR  
205 S. WHITTING STREET, SUITE 500  
ALEXANDRIA, VA 22304  
ATTN ROBERT SULLIVAN  
ATTN CATHERINE TURESKO

JOHNS HOPKINS UNIVERSITY  
APPLIED PHYSICS LABORATORY  
JOHNS HOPKINS ROAD  
LAUREL, MD 20810  
ATTN TECH LIB

KAMAN SCIENCES CORPORATION  
P.O. BOX 7463  
COLORADO SPRINGS, CO 80933  
ATTN LIBRARY  
ATTN J. R. CURRY  
ATTN DONALD H. BRYCE  
ATTN ALBERT P. BRIDGES  
ATTN W. FOSTER RICH  
ATTN WALTER E. WARE

LITTON SYSTEMS, INC.  
AMECOM DIVISION  
5115 CALVERT ROAD  
COLLEGE PARK, MD 20740  
ATTN TECH LIB

LOCKHEED MISSILES AND SPACE COMPANY, INC.  
P.O. BOX 504  
SUNNYVALE, CA 94088  
ATTN DEPT 85-85, SAMUEL I. TAIMUTY  
ATTN G. F. HEATH, D/81-14  
ATTN BENJAMIN T. KIMURA, DEPT 81-14,  
ATTN KEVIN MCCARTHY 0-85-71  
ATTN EDWIN A. SMITH, DEPT 85-85  
ATTN L-365 DEPT 81-20  
ATTN DEPT 81-01, G. H. MORRIS  
ATTN L. ROSSI, DEPT 81-64  
ATTN PHILIP J. HART, DEPT 81-14  
ATTN TECHNICAL LIBRARY

LTV AEROSPACE CORPORATION  
MICHIGAN DIVISION  
P.O. BOX 909  
WARREN, MI 48090  
ATTN JAMES F. SANSON, B-2

M.I.T. LINCOLN LABORATORY  
P.O. BOX 73  
LEXINGTON, MA 02173  
ATTN LEANO LOUGHLIN, LIBRARIAN A-082

MARTIN MARIETTA CORPORATION  
DENVER DIVISION  
PO BOX 179  
DENVER, CO 80201  
ATTN RESEARCH LIB, 6617, J. R. MCKEE  
ATTN BEN T. GRAHAM, MS PO-454

MAXWELL LABORATORIES, INC.  
9244 BALBOA AVENUE  
SAN DIEGO, CA 92123  
ATTN TECH LIB  
ATTN VICTOR FARGO

MCDONNELL DOUGLAS CORPORATION  
5301 BOLSA AVENUE  
HUNTINGTON BEACH, CA 92647  
ATTN PAUL H. DUNCAN, JR.

DISTRIBUTION (Cont'd)

MISSION RESEARCH CORPORATION  
735 STATE STREET  
SANTA BARBARA, CA 93101  
ATTN TECH LIB  
ATTN CONRAD L. LONGMIRE  
ATTN WILLIAM C. HART  
ATTN DANIEL F. HIGGINS

MISSION RESEARCH CORPORATION  
P.O. BOX 8693, STATION C  
ALBUQUERQUE, NM 87108  
ATTN LARRY D. SCOTT  
ATTN TECH LIB  
ATTN DAVID E. MEREWETHER

MISSION RESEARCH CORPORATION-SAN DIEGO  
7650 CONVOY COURT  
SAN DIEGO, CA 92111  
ATTN V. A. J. VAN LINT

MITRE CORPORATION, THE  
P.O. BOX 208  
BEDFORD, MA 01730  
ATTN LIBRARY  
ATTN THEODORE JARVIS  
ATTN M. F. FITZGERALD

NORTHROP CORPORATION  
ELECTRONIC DIVISION  
1 RESEARCH PARK  
PALOS VERDES PENINSULA, CA 90274  
ATTN TECH LIB  
ATTN JOHN M. REYNOLDS  
ATTN VINCENT R. DEMARTINO

NORTHROP CORPORATION  
NORTHROP RESEARCH AND  
TECHNOLOGY CENTER  
3401 WEST BROADWAY  
HAWTHORNE, CA 92050  
ATTN DAVID N. POCOCK  
ATTN LIBRARY

PHYSICS INTERNATIONAL COMPANY  
2700 MERCED STREET  
SAN LEANDRO, CA 94577  
ATTN DOC CON FOR TECH LIB  
ATTN DOC CON FOR JOHN H. HUNTINTON

PROCEDYNE CORPORATION  
221 SOMERSET STREET  
NEW BRUNSWICK, NJ 08903  
ATTN PETER HOROWITZ

PULSAR ASSOCIATES, INC.  
7911 HERSCHEL AVENUE  
LA JOLLA, CA 92037  
ATTN CARLETON H. JONES

R & D ASSOCIATES  
PO BOX 9695  
MARINA DEL REY, CA 90291  
ATTN TECHNICAL LIBRARY  
ATTN S. CLAY ROGERS  
ATTN WILLIAM R. GRAHAM, JR.  
ATTN LEONARD SCHLESSINGER  
ATTN CHARLES MO  
ATTN RICHARD R. SCHAEFER  
ATTN WILLIAM J. KARZAS  
ATTN GERARD K. SCHLEGEL

RAYTHEON COMPANY  
528 BOSTON POST ROAD  
SUDBURY, MA 01776  
ATTN HAROLD L. FLESCHER

RCA CORPORATION  
GOVERNMENT & COMMERCIAL SYSTEMS  
ASTRO ELECTRONICS DIVISION  
PO BOX 800, LOCUST CORNER  
PRINCETON, NJ 08540  
ATTN TECH LIB  
ATTN GEORGE J. BRUCKER

ROCKWELL INTERNATIONAL CORPORATION  
3370 MIROLOMA AVENUE  
ANAHEIM, CA 92803  
ATTN N. J. RUDIE, FA53  
ATTN J. L. MONROE, DEPT 243-027,  
DIV 031  
ATTN L. APODACA, FA53  
ATTN K. F. HULL  
ATTN TECHNICAL LIBRARY  
ATTN JAMES E. BELL, HA10  
ATTN DONALD J. STEVENS, FA70

SANDERS ASSOCIATES, INC.  
95 CANAL STREET  
NASHUA, NH 03060  
ATTN 1-6270, R. G. DESPATHY, SR P E

SCIENCE APPLICATIONS, INC  
PO BOX 2351  
LA JOLLA, CA 92038  
ATTN R. PARKINSON  
ATTN TECHNICAL LIBRARY  
ATTN LEWIS M. LINSON

SCIENCE APPLICATIONS, INC.  
HUNTSVILLE DIVISION  
2109 W. CLINTON AVENUE  
SUITE 700  
HUNTSVILLE, AL 35805  
ATTN NOEL R. BYRN  
ATTN TECH LIB

SCIENCE APPLICATIONS, INC.  
PO BOX 3507  
ALBUQUERQUE, NM 87110  
ATTN RICHARD L. KNIGHT  
ATTN JAMES R. HILL

SCIENCE APPLICATIONS, INCORPORATED  
8400 WESTPARK DRIVE  
MCLEAN, VA 22101  
ATTN WILLIAM L. CHADSEY

SIMULATION PHYSICS, INC.  
41 "B" STREET  
BURLINGTON, MA 01803  
ATTN JOHN R. UGLUM

SPERRY RAND CORPORATION  
SPERRY FLIGHT SYSTEMS DIVISION  
P.O. BOX 21111  
PHOENIX, AZ 85036  
ATTN D. ANDREW SCHOW

STANFORD RESEARCH INSTITUTE  
3980 EL CAMINO REAL  
PALO ALTO, CA 94306  
ATTN MR. PHILIP DOLAN  
ATTN GEORGE CARPENTER  
ATTN ARTHUR LEE WHITSON  
ATTN MEL BERNSTEIN

STANFORD RESEARCH INSTITUTE  
306 WYNN DRIVE, N. W.  
HUNTSVILLE, AL 35805  
ATTN MACPHERSON MORGAN

SYSTEMS, SCIENCE AND SOFTWARE  
P.O. BOX 4803  
HAYWARD, CA 94540  
ATTN TECH LIB

SYSTEMS, SCIENCE AND SOFTWARE, INC.  
PO BOX 1620  
LA JOLLA, CA 92038  
ATTN TECHNICAL LIBRARY

TEXAS INSTRUMENTS, INC.  
P.O. BOX 5474  
DALLAS, TX 75222  
ATTN TECH LIB  
ATTN DONALD J. MANUS, MS 72

TRW SYSTEMS GROUP  
ONE SPACE PARK  
REDONDO BEACH, CA 90478  
ATTN TECH INFO CENTER/S-1930  
ATTN ROBERT M. WEBB, R1-2410  
ATTN AARON H. NAREVSKY, R1-2144  
ATTN JERRY I. LUBELL, R1-1144  
ATTN O. E. ADAMS, R1-1144

TRW SYSTEMS GROUP  
SAN BERNARDINO OPERATIONS  
PO BOX 1310  
SAN BERNARDINO, CA 92402  
ATTN F. B. FAY, 527/710

TRW SYSTEMS GROUP  
PO BOX 368  
CLEARFIELD, UT 84015  
ATTN TECH LIB  
ATTN DONALD W. PUGSLEY

UNITED TECHNOLOGIES CORPORATION  
HAMILTON STANDARD DIVISION  
BRADLEY INTERNATIONAL AIRPORT  
WINDSOR LOCKS, CT 06069  
ATTN RAYMOND G. GIGUERE

VECTOR RESEARCH ASSOCIATES  
735 STATE STREET, RM 314  
SANTA BARBARA, CA 93101  
ATTN W. A. RADASKY

HARRY DIAMOND LABORATORIES  
ATTN MCGREGOR, THOMAS, COL, COMMANDER/  
FLYER, I.N./LANDIS, P.E./  
SOMMER, H./OSWALD, R. B.  
ATTN CARTER, W.W., DR., TECHNICAL  
DIRECTOR/MARCUS, S.M.  
ATTN KIMMEL, S., PAO  
ATTN CHIEF, 0021  
ATTN CHIEF, 0022  
ATTN CHIEF, LAB 100  
ATTN CHIEF, LAB 200  
ATTN CHIEF, LAB 300  
ATTN CHIEF, LAB 400  
ATTN CHIEF, LAB 500  
ATTN CHIEF, LAB 600  
ATTN CHIEF, DIV 700  
ATTN CHIEF, DIV 800  
ATTN CHIEF, LAB 900  
ATTN CHIEF, LAB 1000  
ATTN RECORD COPY, BR 041  
ATTN HDL LIBRARY (3 COPIES)

DISTRIBUTION (Cont'd)

HARRY DIAMOND LABORATORIES (Cont'd)  
ATTN CHAIRMAN, EDITORIAL COMMITTEE  
ATTN CHIEF, 047  
ATTN TECH REPORTS, 013  
ATTN PATENT LAW BRANCH, 071  
ATTN GIDEP OFFICE, 741  
ATTN LANHAM, C., 0021  
ATTN ROSADO, J. A., 200  
ATTN MILETTA, J. R., 200  
ATTN WONG, R., 1000  
ATTN TOMPKINS, J. E., 230  
ATTN WYATT, W. T., 1000  
ATTN WIMENITZ, F. N., 0024  
ATTN SWETON, J. F., 1000  
ATTN BEILFUSS, J. W., 1000  
ATTN KLEBERS, J., 1000  
ATTN GRAY, R. F., 1000  
ATTN PFEFFER, R., 1010  
ATTN AGEE, J., 1000  
ATTN GORNAK, G., 1000  
ATTN LOWERY, A., LTC, 1000  
ATTN DANDO, J., 1000  
ATTN BOMBARDT, J., 1000  
ATTN STARK, W. J., (20 COPIES)