

AD-A041 527

OHIO STATE UNIV COLUMBUS ELECTROSCIENCE LAB
OPERATION MANUAL FOR CO PROBE LASER FOR ATMOSPHERIC STUDIES, (U)
MAY 77 E K DAMON, M E THOMAS

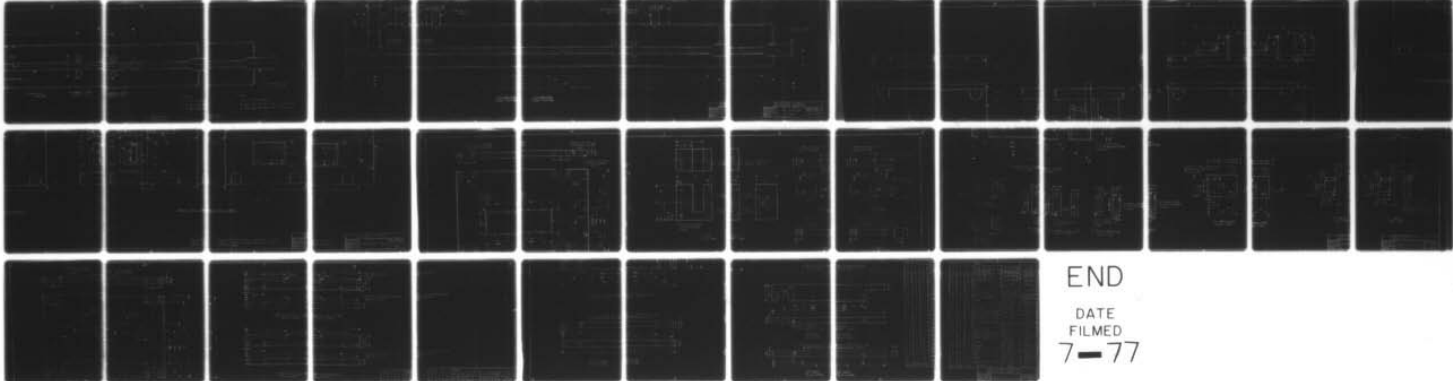
F/G 20/5

N00173-76-C-0233

UNCLASSIFIED

NL

| OF |
AD
A041527



END
DATE
FILMED
7-77



6 OPERATION MANUAL FOR CO PROBE LASER FOR ATMOSPHERIC STUDIES

10 Edward K. Damon
Michael E. Thomas

2

ADA 041527

1 The Ohio State University

3 ElectroScience Laboratory

Department of Electrical Engineering

2 Columbus, Ohio 43212

DDC
JUN 17 1977
C

15 Contract No. N00173-76-C-0233

11 May 77

12 48p.

DISTRIBUTION STATEMENT A
Approved for public release
Distribution Unlimited

AD No.
DDC FILE COPY

Naval Research Laboratory
4555 Overlook Avenue, South West
Washington, D.C. 20375

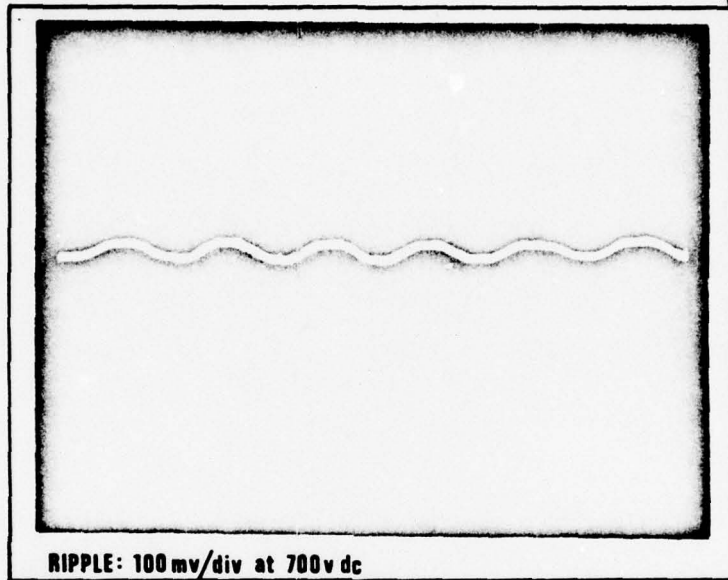
1002251

NOTICES

When Government drawings, specifications, or other data are used for any purpose other than in connection with a definitely related Government procurement operation, the United States Government thereby incurs no responsibility nor any obligation whatsoever, and the fact that the Government may have formulated, furnished, or in any way supplied the said drawings, specifications, or other data, is not to be regarded by implication or otherwise as in any manner licensing the holder or any other person or corporation, or conveying any rights or permission to manufacture, use, or sell any patented invention that may in any way be related thereto.

HV DC POWER SUPPLY

2



Tech Memo/Instruction Manual for
PZ-62 Variable DC Power Supply

D D C
RECEIVED
JUN 17 1977
C

burleigh

Burleigh Instruments Inc.
100 Despatch Drive, PO Box 388
East Rochester, New York 14445
(716) 586-7930

ACCESSION NO.	
NTC	Write Section <input checked="" type="checkbox"/>
GD	Bull. Section <input type="checkbox"/>
UNCLASSIFIED	<input type="checkbox"/>
JUSTIFICATION	<i>letter on file</i>
BY	
DISTRIBUTION/AVAILABILITY CODES	
Dist.	AVAIL. and/or SPECIAL
A	

No. EL 145 775 ✓

CONTENTS

1. Incoming Inspection	1
A. Visual	
B. Electrical	
C. Quality Control	
2. Description	2
3. Operation	2
A. Controls and Connectors	
B. Operation	
4. Specifications	6
5. Circuit Diagrams	7

I. INCOMING INSPECTION

A. Visual

The PZ-62 High Voltage DC Power Supply has been packaged in a special carton designed to give maximum protection during shipment. If the outside of the shipping carton is damaged, notify your shipping department immediately. The shipping department may wish to notify the carrier at this point.

If the shipping carton is undamaged externally, the instrument should be removed from the carton. If any damage is evident visually or if any rattling can be heard when the PZ-62 is shaken lightly, notify your shipping department and Burleigh Instruments, Inc. immediately. It is advisable to save the special carton for future storage or transportation.

B. Electrical

Assuming that the instrument is in good condition visually, a preliminary check of its electrical operation should be made. This can be accomplished quite simply by checking the output on any one of the three miniature high voltage Sealectro connectors with a digital voltmeter (DVM). Plug in the PZ-62, establish a ground from the DVM to the PZ-62, and carefully touch the center pin of one of the miniature high voltage connectors with the probe from the DVM. Be careful not to bend the high voltage pin. With the COMMON switch in the ON position, the COMMON knob can be increased and the output of any one of the connectors should go to several hundred volts. Should the PZ-62 fail this initial check, notify Burleigh Instruments, Inc. immediately.

C. Quality Control

It should be noted that the PZ-62 undergoes several stages of inspection, test, and calibration before shipment, including a burn-in at elevated temperatures for 5 to 7 days, minimum. The instrument has undergone an exhaustive final test and calibration process prior to shipment. Problems can occur, however, and should a problem arise during the warranty period, Burleigh's policy is to repair any instruments within ten days of receipt at the factory. During this period the instrument will be burned-in for a period of 3 days, minimum, before rechecking and returning to the customer.

2. DESCRIPTION

The PZ-62 High Voltage DC Power Supply is a high stability, low noise, variable DC power supply with 3 output channels. It is particularly well suited for driving Burleigh PZT devices such as PZT Pushers, PZT Aligner/Translators, Tunable Etalons and Fabry-Perots Interferometers. A convenient front panel voltage range switch permits selection of maximum operating voltages of 500v or 1000v. This feature ensures that excessive voltage will not be applied to PZT devices with limited voltage capability.

With the COMMON selector switch in the OFF position, the full output voltage in either voltage range can be controlled independently at each output connector using the 3 independent CHANNEL knobs. With the COMMON selector switch in the ON position, the COMMON knob adjusts the output of all three output channels synchronously over half the voltage range selected. The independent CHANNEL knobs can be used for adjustment on each channel over the remaining half of the voltage range selected.

This feature is particularly useful when driving three element piezoelectric devices. The COMMON knob is used for axial positioning of an optical element mounted in the piezoelectric device, and the three CHANNEL knobs are used for alignment of the optical element.

Individual high voltage miniature Sealectro connectors are provided to connect the PZ-62 to Burleigh's PZT Pushers. A multiple pin connector (Viking TKR-07) is provided to connect Burleigh's multiple element piezoelectric devices, including PZT Aligner/Translators, Tunable Etalons and Fabry-Perot Interferometers to the PZ-62. Both kinds of connectors are standard with every PZ-62.

The all solid state design, conservative choice of components, large double-sided circuit board, and careful construction all combine to make the PZ-62 a rugged, versatile and easily serviceable laboratory instrument.

3. OPERATION

A. Controls and Connectors

Beginning at the left of the front panel is a two position rotary switch marked RANGE SELECTOR. In the counterclockwise position, marked 500v, the maximum output of any channel is 1000v with respect to ground. The

grey multiple pin connector under the RANGE selector switch will be discussed later.

To the right of the RANGE switch is a block of controls marked OUTPUT CONTROLS. At the far left of this block of controls are two rotary knobs; the top knob is marked COMMON, the bottom knob is marked OFF/ON. The top knob is used to adjust the voltage to all three output channels synchronously. When the OFF/ON rotary switch is in the counterclockwise or OFF position, the COMMON control knob is inoperative. With the OFF/ON rotary switch in the clockwise or ON position, the COMMON control knob is functional.

The COMMON knob controls half of the output voltage available. For example, if the RANGE switch is set at 1000v, and the individual controls are set such that the outputs on channels 1, 2 and 3 are 100v, 200v and 500v respectively, then turning the COMMON knob fully clockwise will increase the voltage on channel 1 from 100v to 600v, on channel 2 from 200v to 700v, and on channel 3 from 500v to 1000v.

The remaining three controls in the OUTPUT CONTROLS section are marked CHANNEL 1, CHANNEL 2, and CHANNEL 3. These are used for individual adjustments of the voltage on the three output channels. With the RANGE switch in the 500v position and the COMMON selector switch in the ON position, each of the three CHANNEL knobs has a 250v adjustment range. With the RANGE switch in the 1000v position and the COMMON selector switch in the OFF position, each of the three CHANNEL knobs can be used to adjust each channel over a full 1000v. The output voltages appear on the three gold, subminiature, high voltage, Sealectro connectors found directly beneath each of the three CHANNEL knobs. These connectors interface directly with the Sealectro connectors used on Burleigh's PZT Pushers.

The three output channels also appear on the Viking grey plastic multiple pin connector found directly beneath the RANGE selector switch. Burleigh's PZT Aligner/Translators, Tunable Etalons, and Fabry-Perot Interferometers all connect directly to this multiple pin connector.

B. Operation

A DVM can conveniently be used to check the electrical operation of the PZ-62 Variable DC Power Supply. The ground or common of the DVM should be connected to the ground of the PZ-62 and the probe of DVM should be touched to the CHANNEL 1 output connector of the PZ-62. (Be careful not to bend the pin). Set the RANGE selector switch in the 500v position, set the COMMON knob fully counterclockwise, the CHANNEL 1 knob fully counterclockwise and the COMMON selector switch to the OFF position. Now adjusting the CHANNEL 1 knob should produce 0 to 500v, and the COMMON knob should have no effect.

Now switch the COMMON selector switch to the ON position. In this position the COMMON knob should control the output over another 250v range and the CHANNEL 1 knob should control the output over another 250v.

Now switch the RANGE selector switch to the 1000v position and leave the COMMON selector in the ON position. In this mode the COMMON knob should provide adjustment over 500v and the CHANNEL 1 knob over an additional 500v. Now return the COMMON selector to the OFF position. In this mode the COMMON knob should have no control and the CHANNEL 1 knob should provide adjustment over a full 1000v. The other two output channels should be checked in the same manner.

Now looking at any channel, the output should be set at approximately 500v and the DVM should be switched to an AC measuring mode. Check to be sure that the DVM when operated in a high sensitivity AC model will not be damaged by 500v DC. The DVM should read about 5mv RMS.

C. Applications

Figures 1 and 2 below depict the operation of the PZ-62 with Burleigh single and multi-element PZT devices.

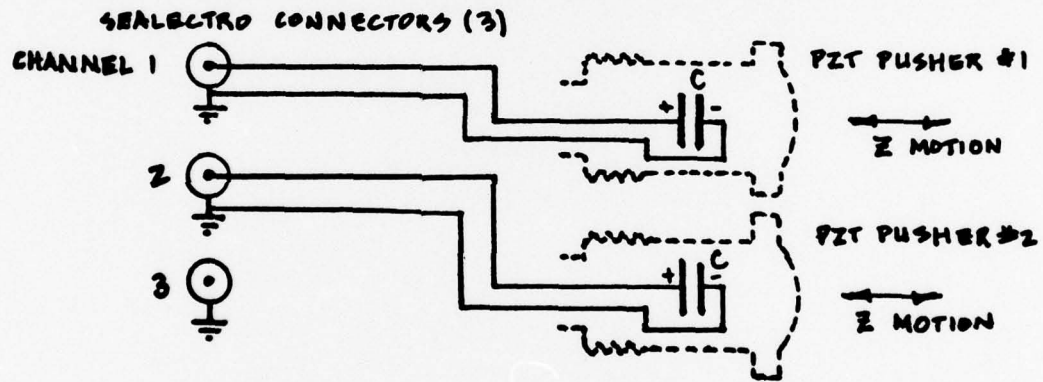


Fig. 1 PZ-62 with two Burleigh PZT Pushers

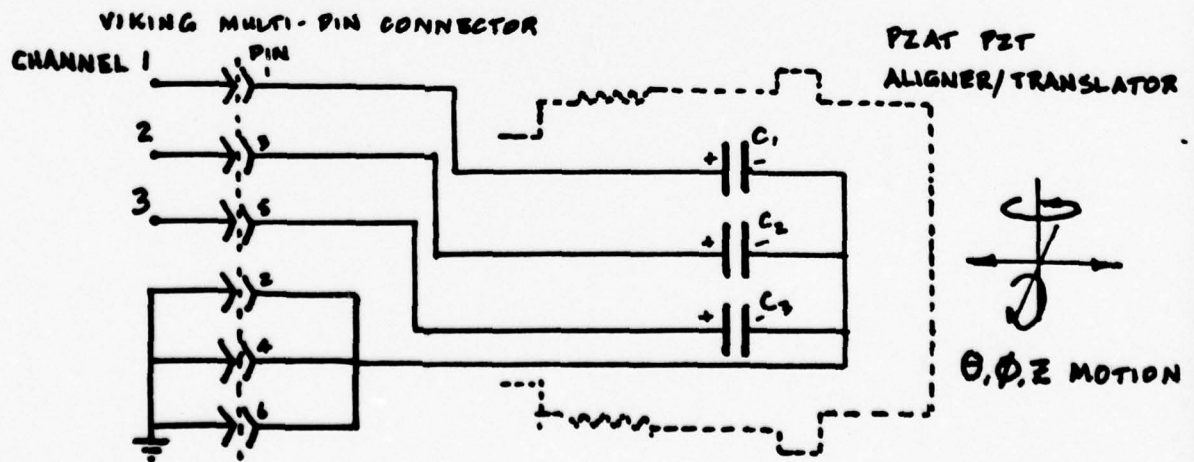


Fig. 2 PZ-62 with Burleigh PZAT PZT Aligner/Translator (TL Tunable Etalon or RC Fabry-Perot)

Figure 3 also shows an alternate wiring scheme for the PZ-62 which can be used either to provide the full 1000v adjustment capability on each of the CHANNEL knobs, plus have 500v adjustment control on the COMMON knob (or in the opposite mode to provide 500v on the three CHANNEL knobs plus have a full 1000v available from the COMMON knob).

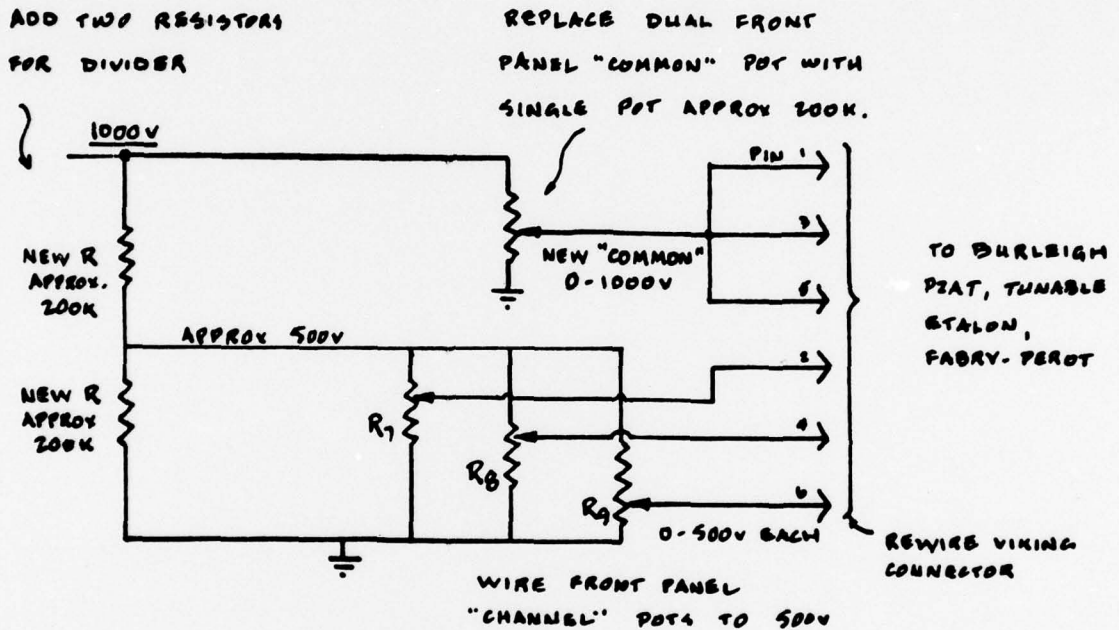


Fig. 3 Alternate PZ-62 wiring for maximum axial and angular adjust on Burleigh PZAT, TL Tunable Etalon or RC Fabry-Perot. DONE AT USER'S RISK.

These wiring connections are only appropriate for operation with Burleigh's multiple element piezoelectric devices, for which all inputs to the piezoelectric elements are floating with respect to ground. The wiring changes can be made to the multiple pin connector.

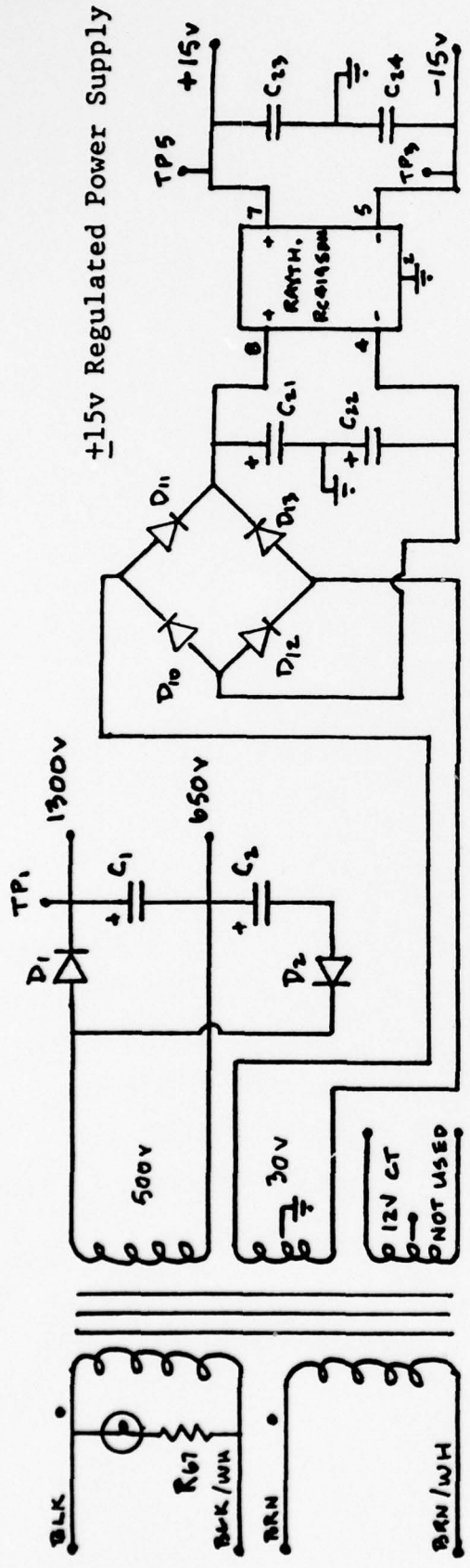
Such wiring changes must be done at the user's risk. This information is provided since there are certain instances in which it is useful to combine the maximum translational capability of the piezoelectric devices with alignment capability, or where maximum alignment capability is required with translational adjustment. The instruction manuals for the PZT Aligner/Translators, Tunable Etalons, or Fabry-Perot Interferometers should be consulted for proper wiring of the piezoelectrics. NOTE: care must be taken when making such a wiring change that the reverse voltage applied to the piezoelectric elements does exceed 500v. Thus whichever outputs have a +1000v capability must go to the positive inputs of the piezoelectric elements.

4. SPECIFICATIONS

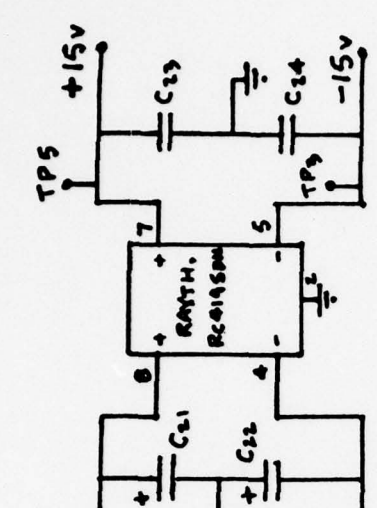
Output Voltage	0 to 1000v depending on the position of the RANGE selector switch and position of the COMMON and CHANNEL knobs. See section 3B, "operation", for further details.
Output Current	.1mA, max.
Noise and Ripple	±10mv RMS max.; 5mv p-p typical
Settability	±2v
Long-Term Stability (after 30 min. settling time)	±300mv DC typical
Regulation	±.05% for line voltage 108-128VAC, 50/60Hz
Connectors	
Individual	Sealectro 51-045-0000
Multiple-pin	Viking TKR-07
Wiring for Viking output connector	Pin 1 - Channel 1 Pin 3 - Channel 2 Pin 5 - Channel 3 Pins 2,4,6 - Ground
Weight	12 lbs.
Dimensions	4.5" high x 15" wide x 11" deep
Line Cord	6 ft. with standard American U.L. 3-pin grounded plug

5. CIRCUIT DIAGRAMS

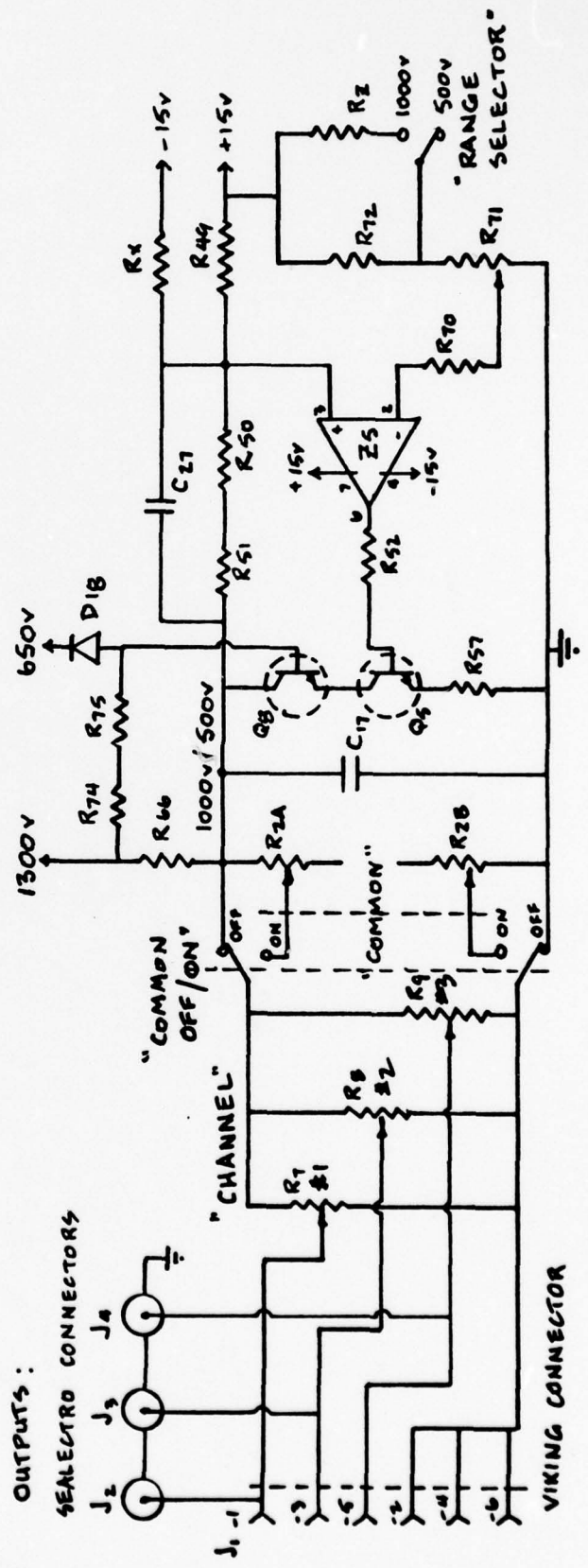
HV Power Supply



+15v Regulated Power Supply



110 OR 220V
50/60 HZ



OUTPUTS:

SELECTRO CONNECTORS

J2 J3 J4

J1 -1

-3

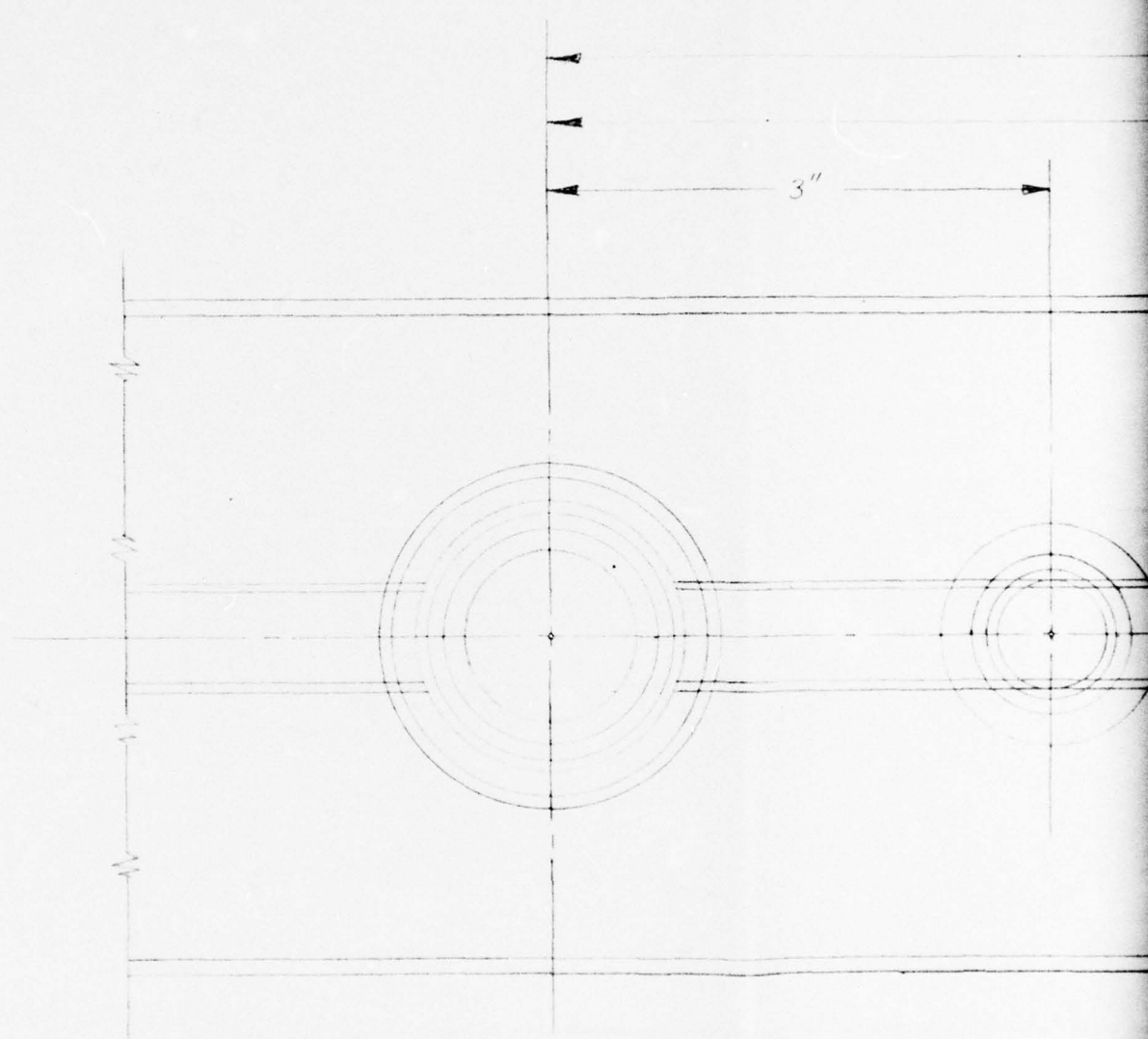
-5

-2

-4

-6

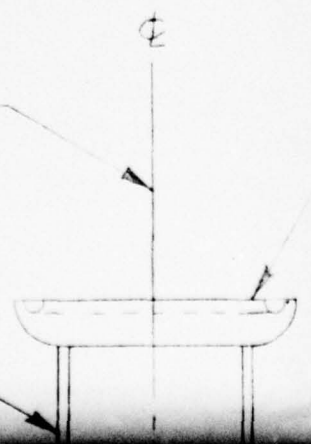
VIKING CONNECTOR



OTHER HALF IS
SYMMETRICAL
ABOUT Φ

CORNING 35/25
O-RING JOINT

TUBE 28mm OD
25mm ID



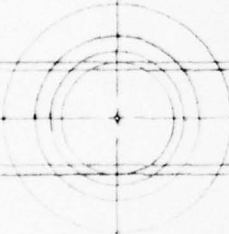
2

13"

16"

50 mm

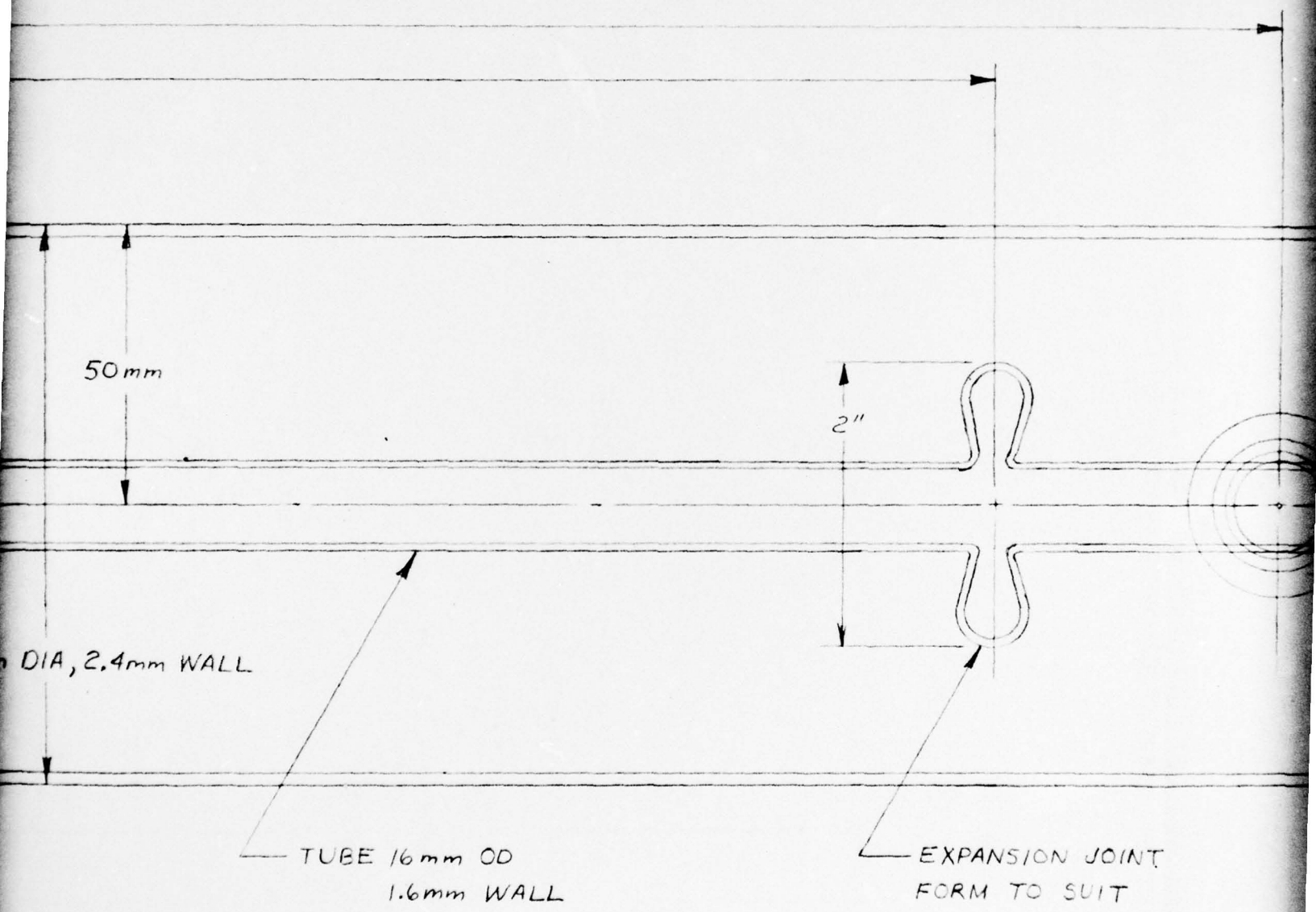
100 mm DIA, 2.4 mm WALL



CORNING 35/25
O-RING JOINT

CORNING 28/15
O-RING JOINT

3



50 mm

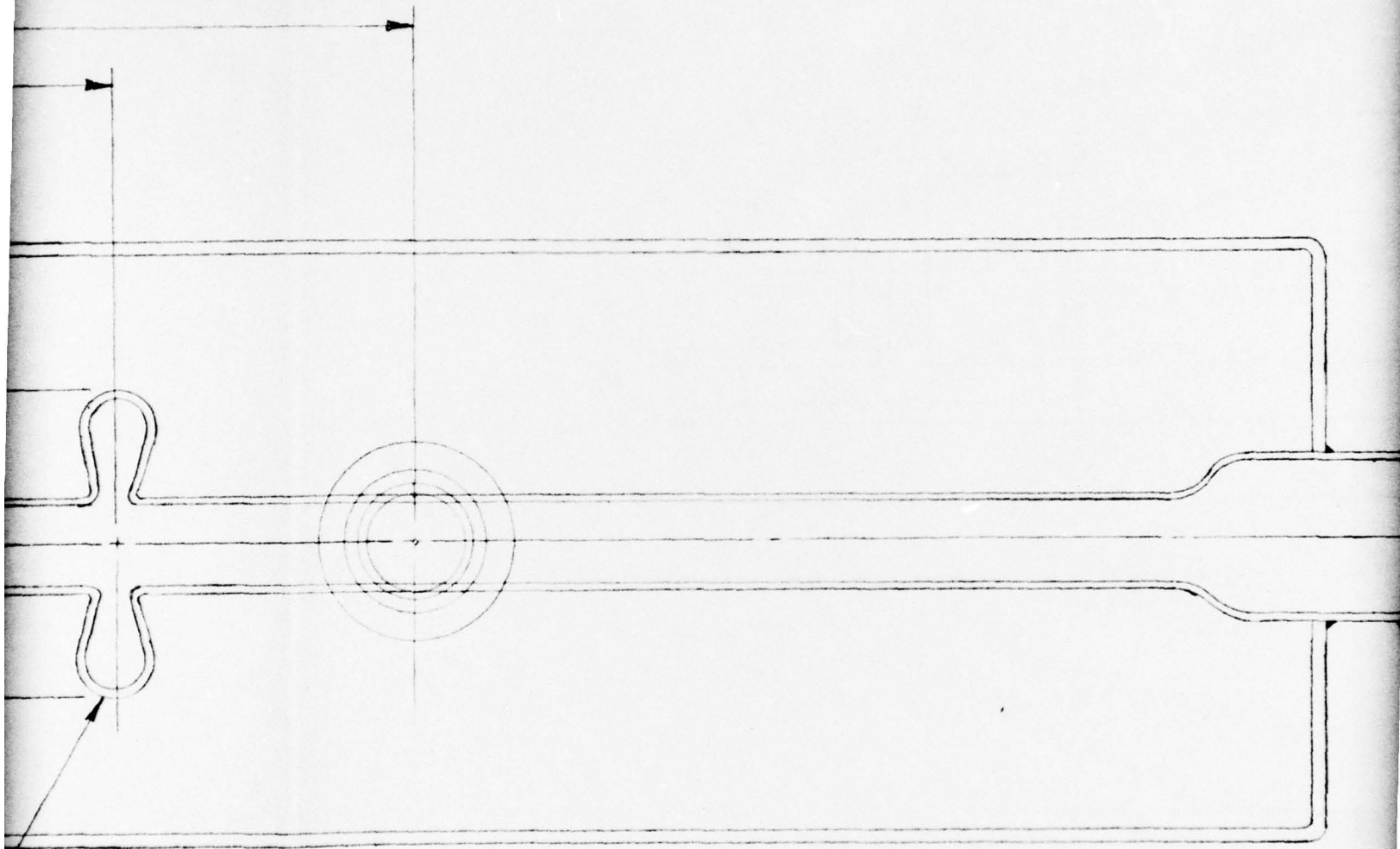
2"

DIA, 2.4mm WALL

TUBE 16mm OD
1.6mm WALL

EXPANSION JOINT
FORM TO SUIT

4

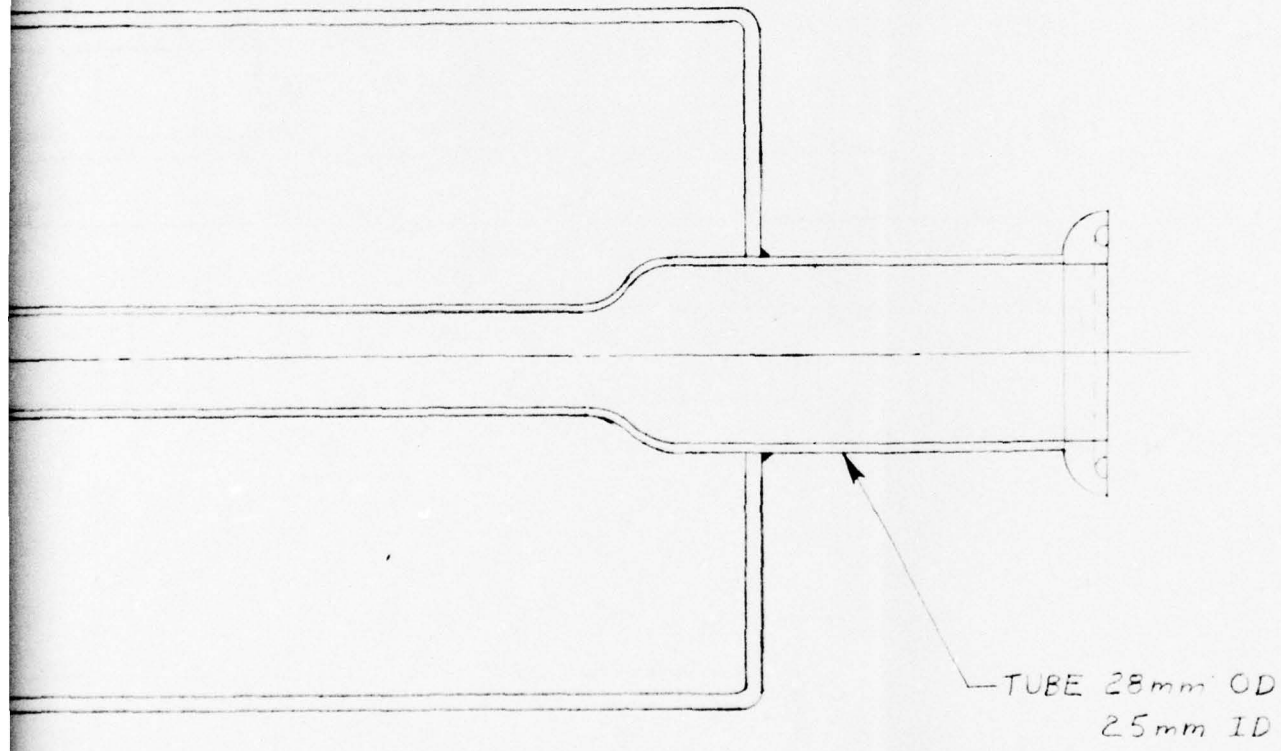


EXPANSION JOINT
FORM TO SUIT

NOTES:

- 1. ALL TUBING
- 2. $1\frac{1}{4}$ " ID \times $\frac{3}{32}$ " O-RING
- 3. $\frac{3}{4}$ " ID \times $\frac{3}{32}$ " O-RING

CORNING 28/15
O-RING JOINT

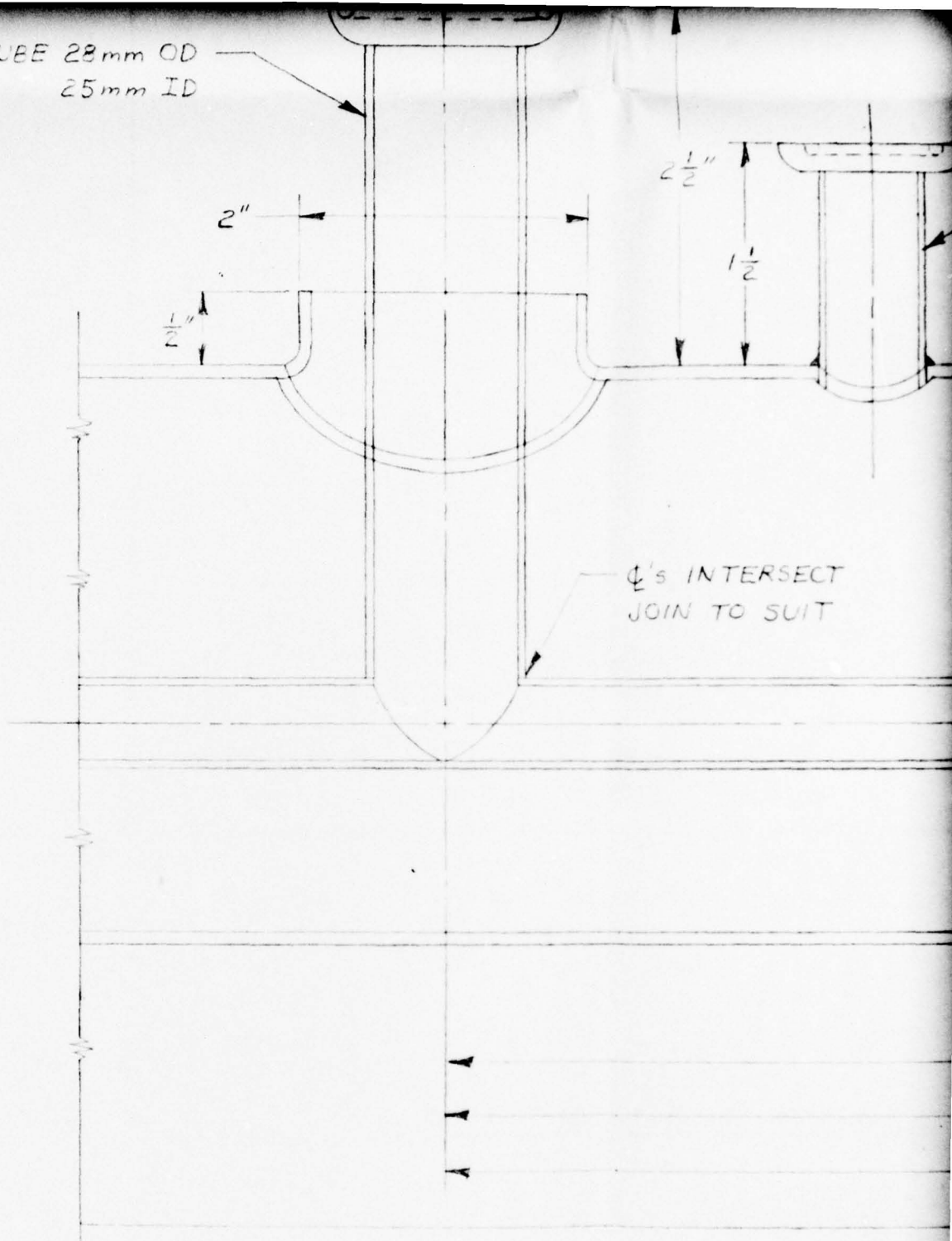


NOTES:

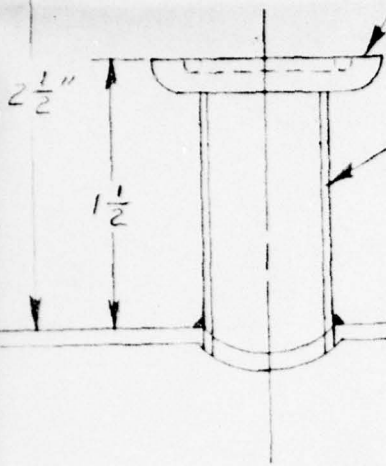
- 1. ALL TUBING IS PYREX
- 2. $1\frac{1}{2}$ " ID \times $\frac{3}{32}$ " O-RING FOR CORNING 35/25 JOINT
- 3. $\frac{3}{4}$ " ID \times $\frac{3}{32}$ " O-RING FOR CORNING 28/15 JOINT

CORNING 28/15
RING JOINT

TUBE 28mm OD
25mm ID



O-RING JOINT



TUBE 18mm OD
16mm ID

Φ's INTERSECT
JOIN TO SUIT

23"

CO LASER TUBE
PYREX ~ I REQUIRE

TUBE 18 mm OD
16 mm ID



23"

24"

26"

52"

CO LASER TUBE
PYREX ~ 1 REQUIRED

6

CORNING 28/75
O-RING JOINT

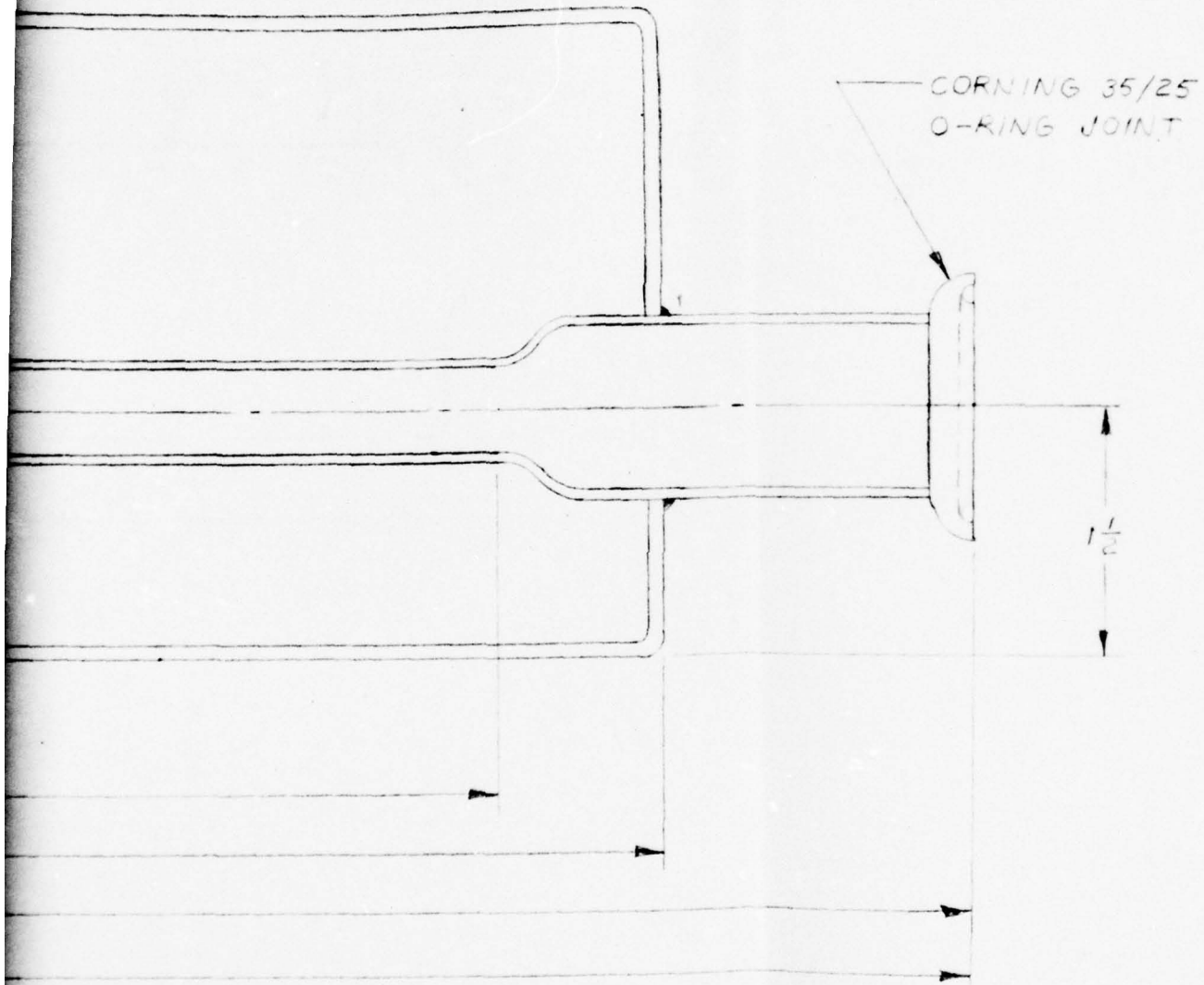
18 mm OD
16 mm ID

$1\frac{1}{2}$ "



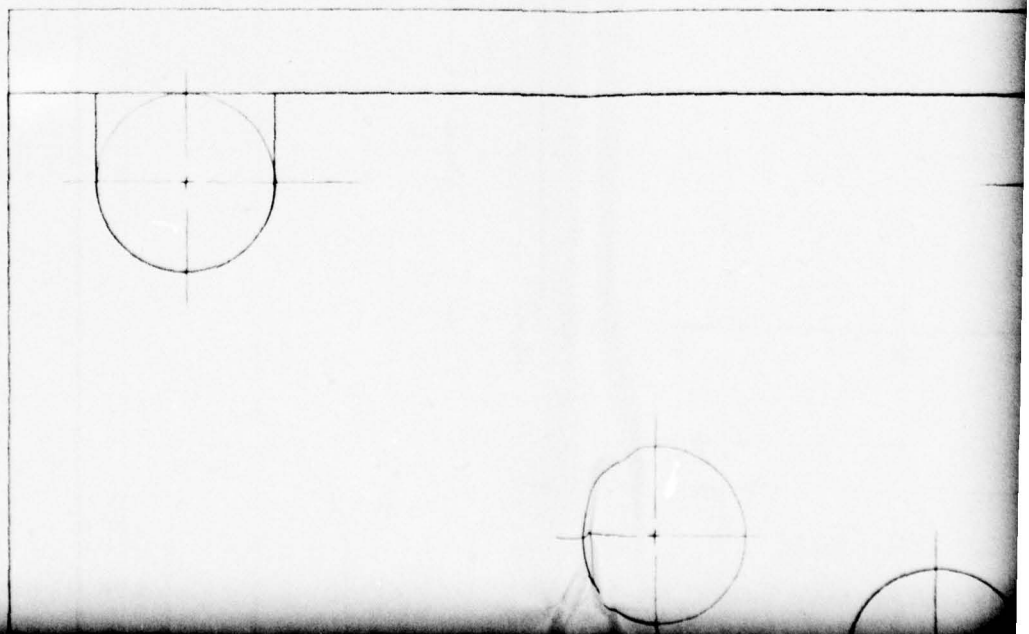
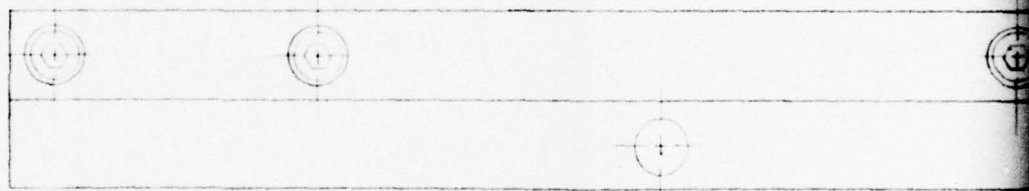
THE O ELECTA	
DATE	6-25-76
SCALE	FULL
DRAWN	J. GIBSON
CHECKED	
APPROVED	

20713
JOINT



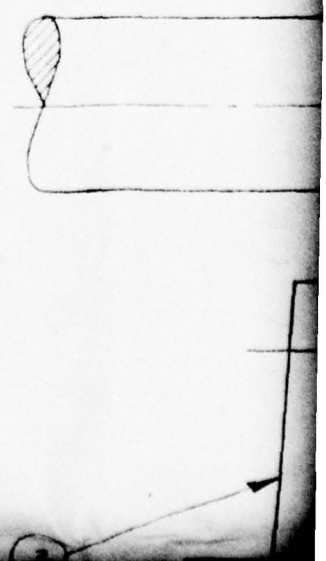
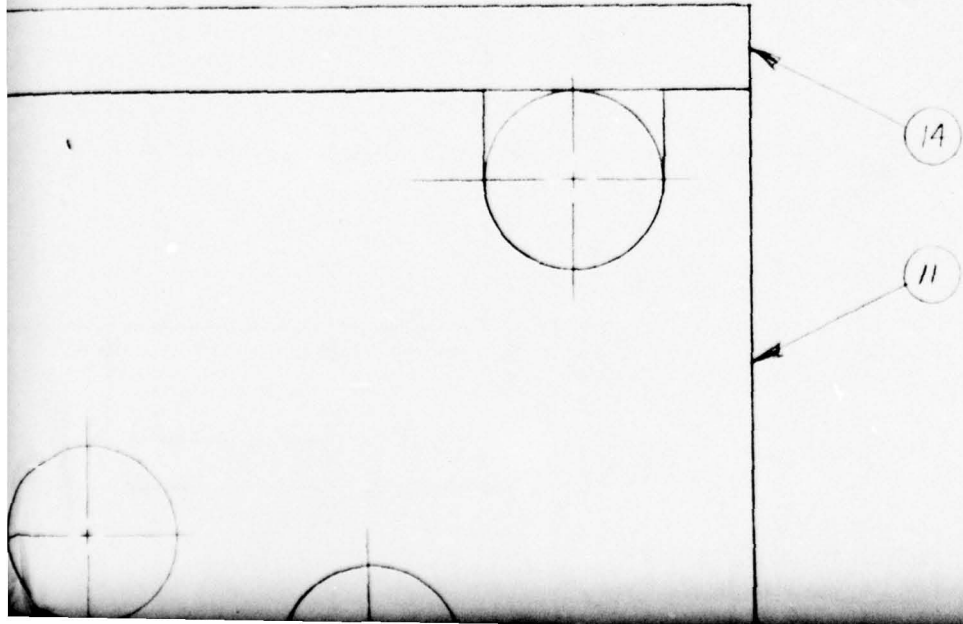
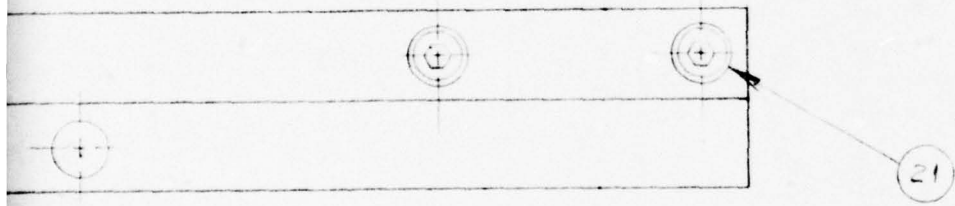
THE OHIO STATE UNIVERSITY ELECTROSCIENCE LABORATORY		
DATE 6-25-76	CO LASER TUBE	SHEET 1 OF 1
SCALE FULL		PROJECT 4430
DRAWN J. GIBSON		D-428
CHECKED		
APPROVED		

1

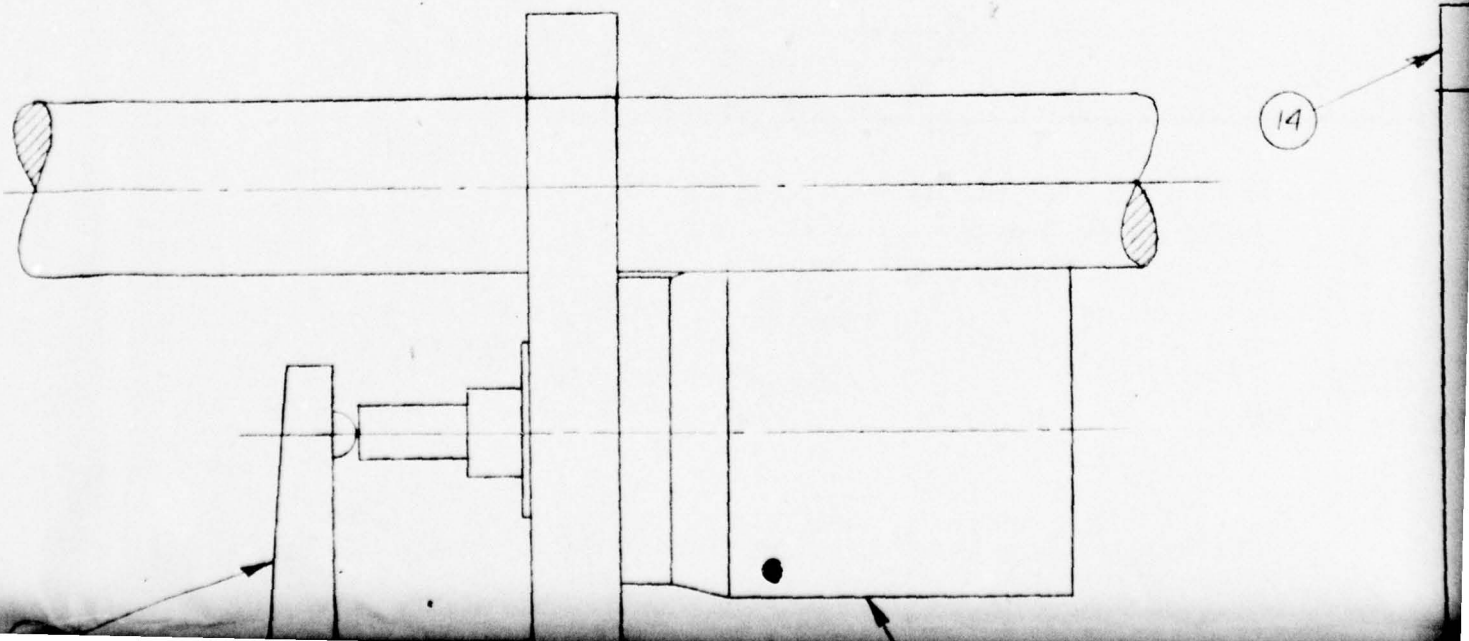


1

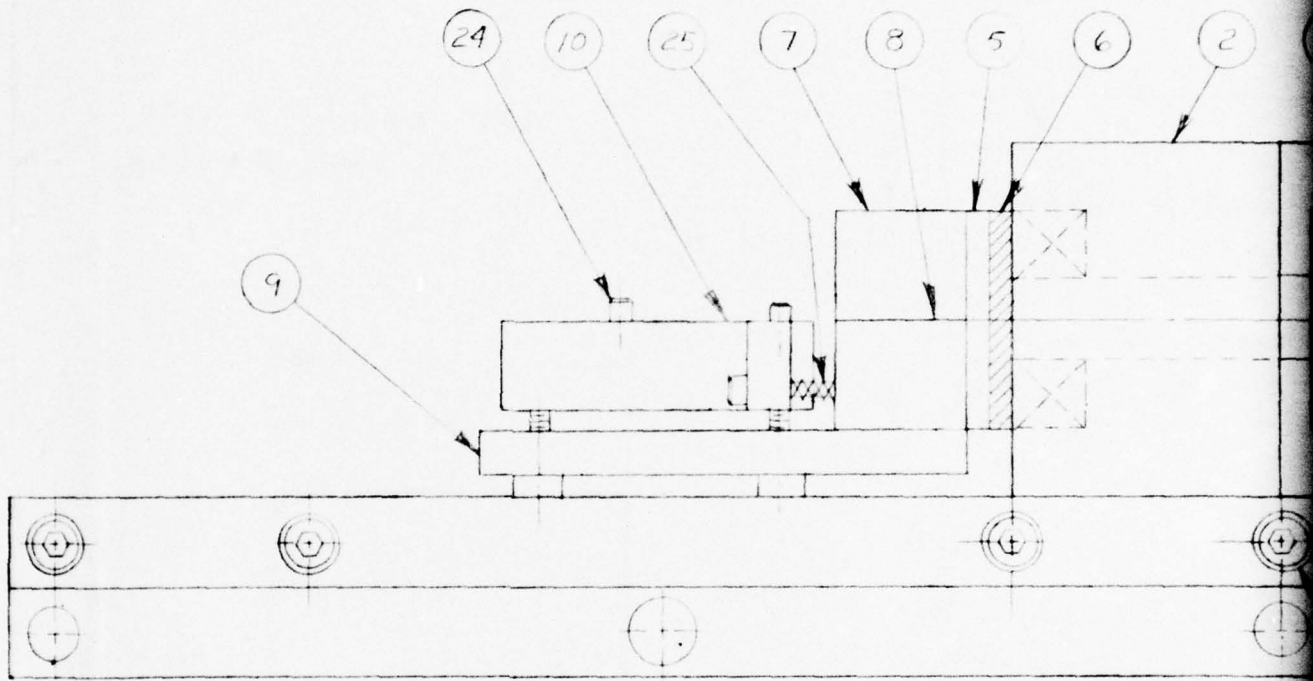
2



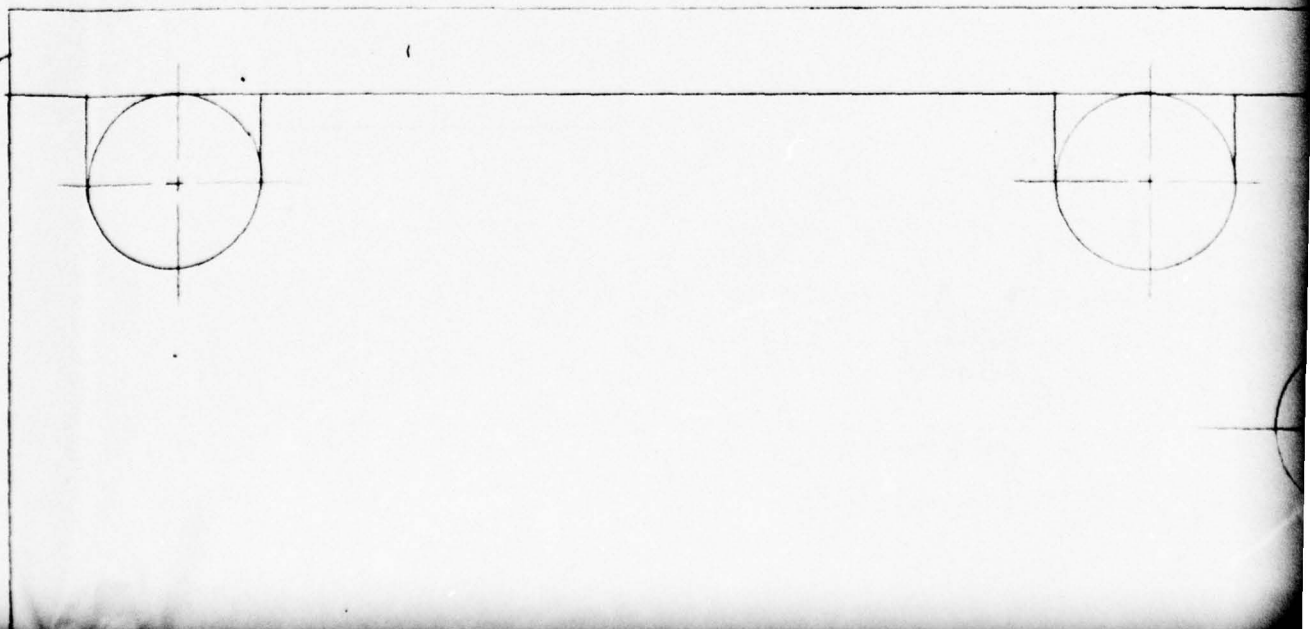
3

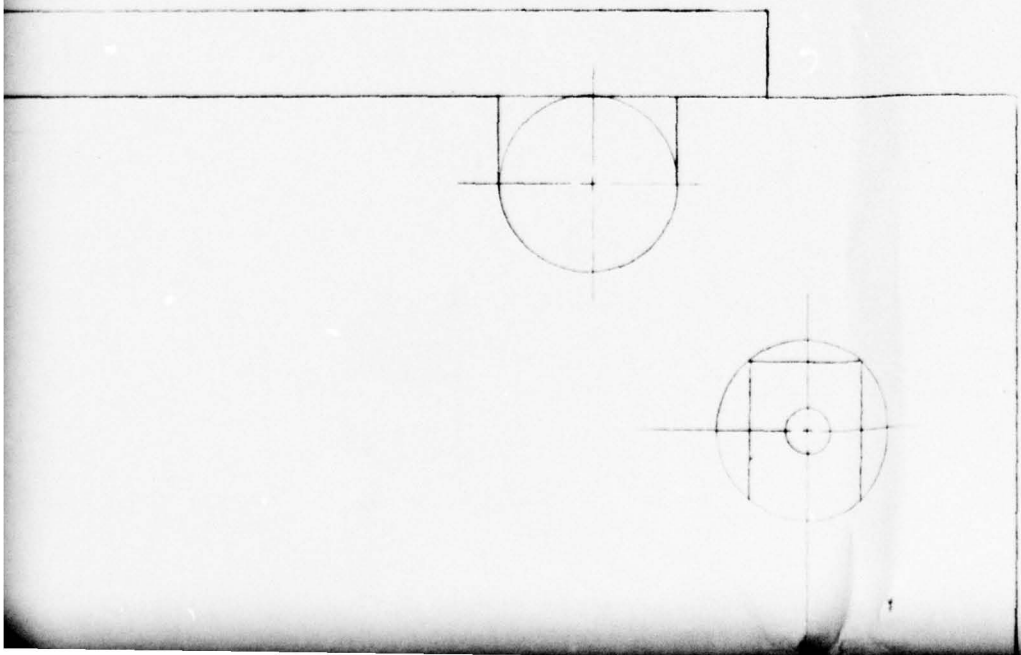
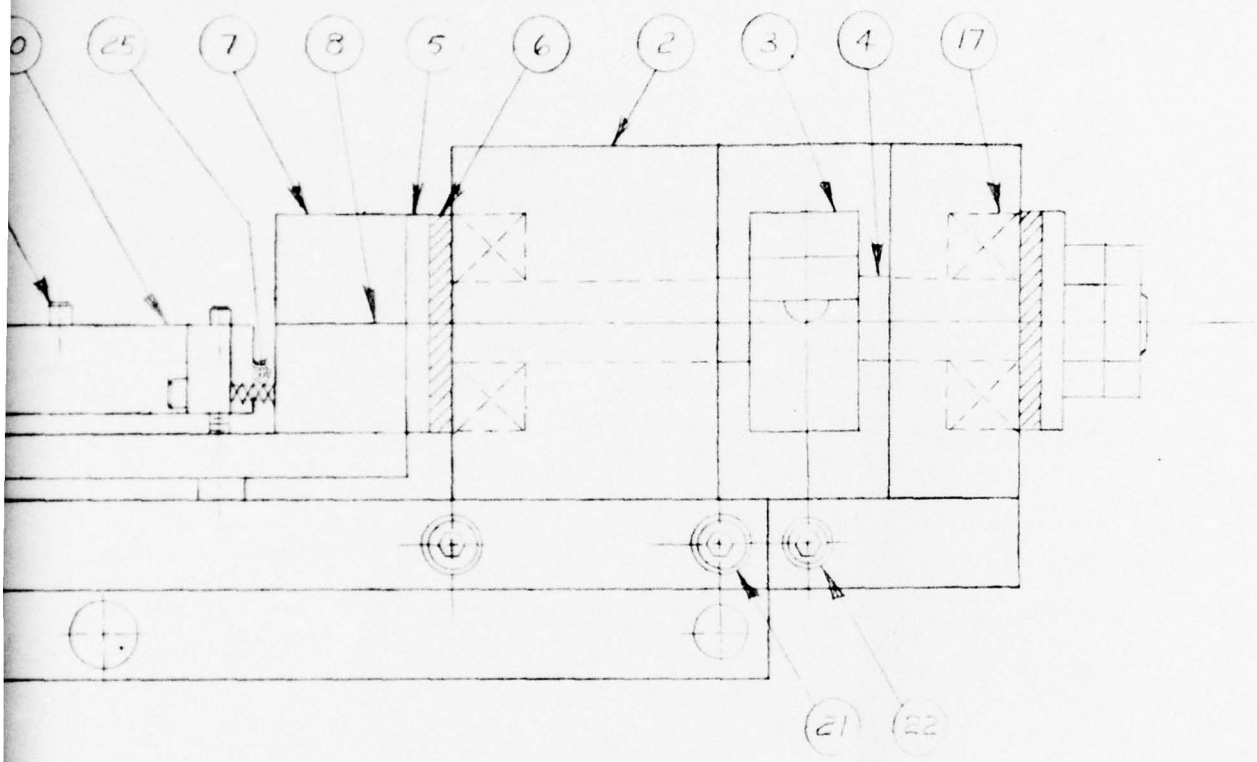


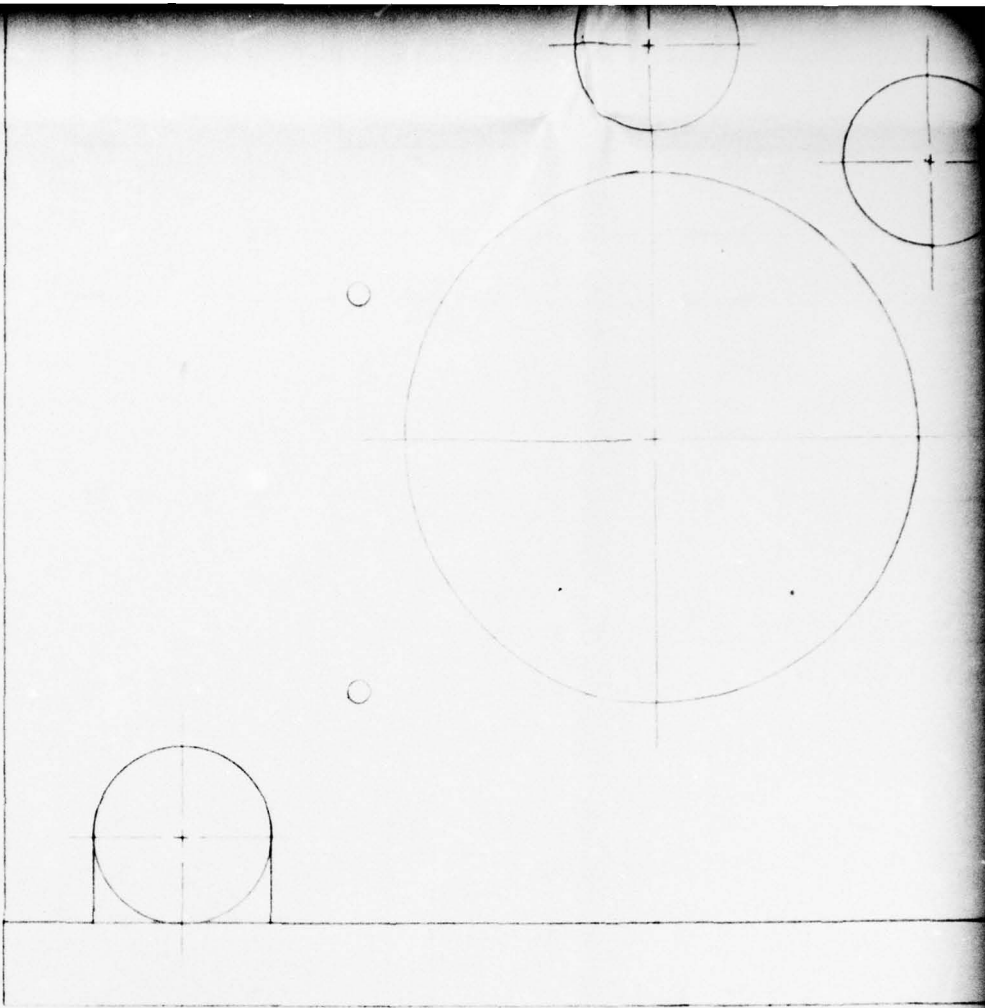
4



14







OUTPUT MOUNT PLATE ASSEMBLY

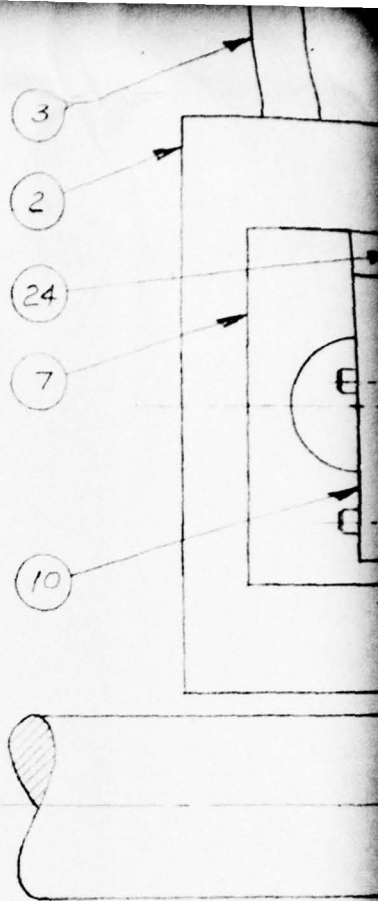
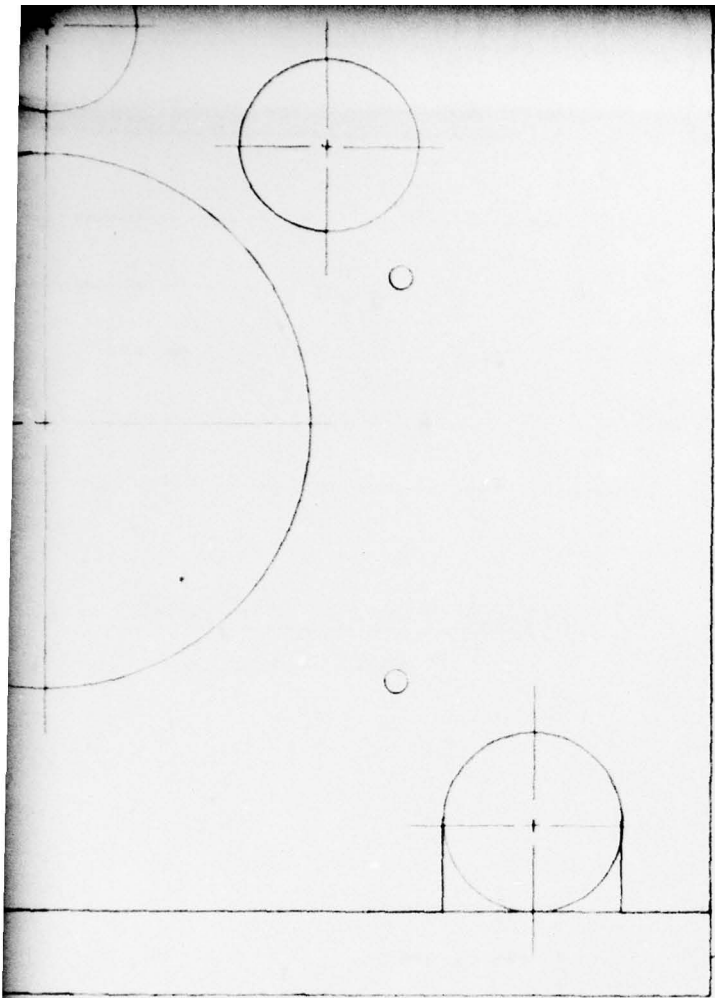
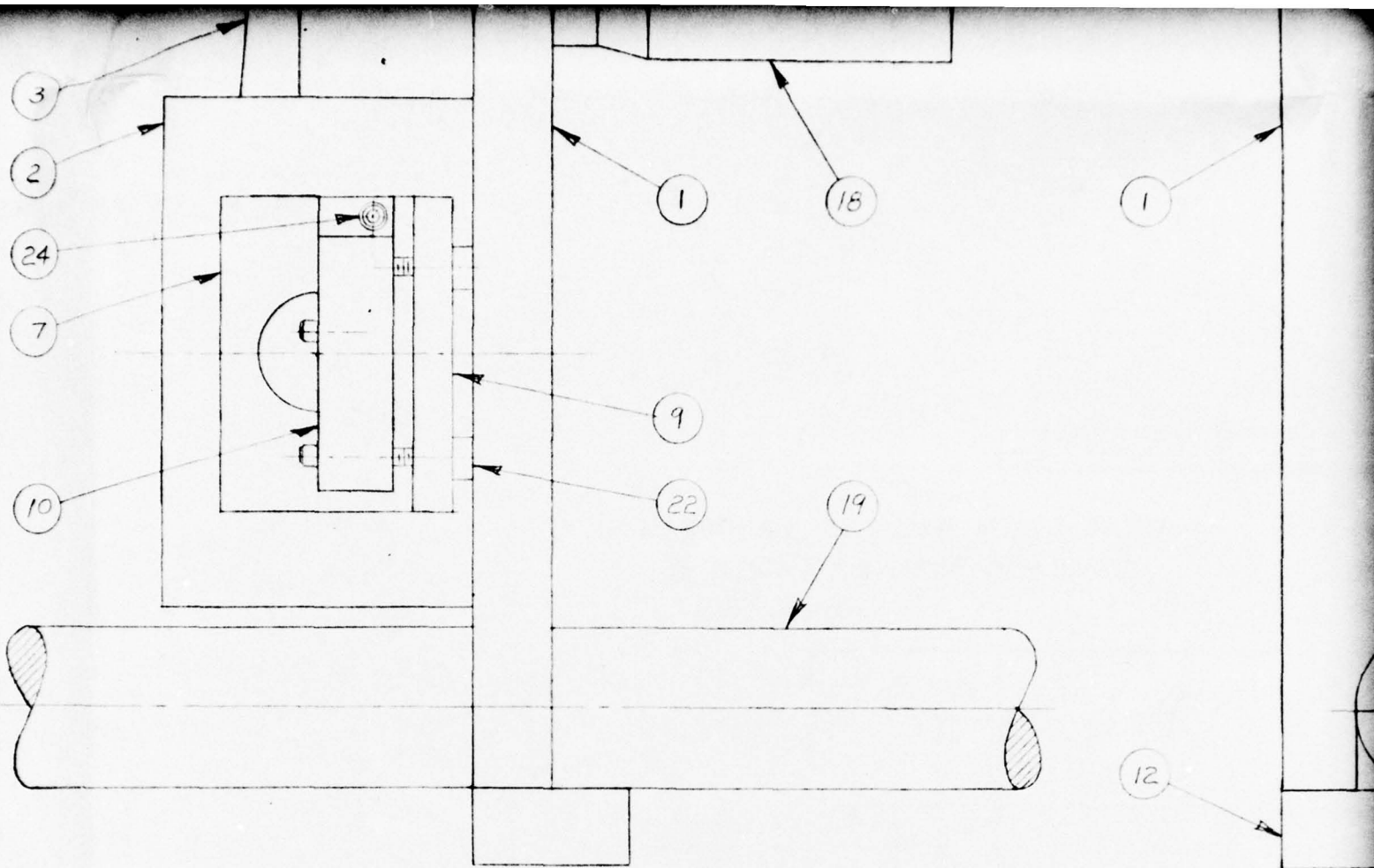


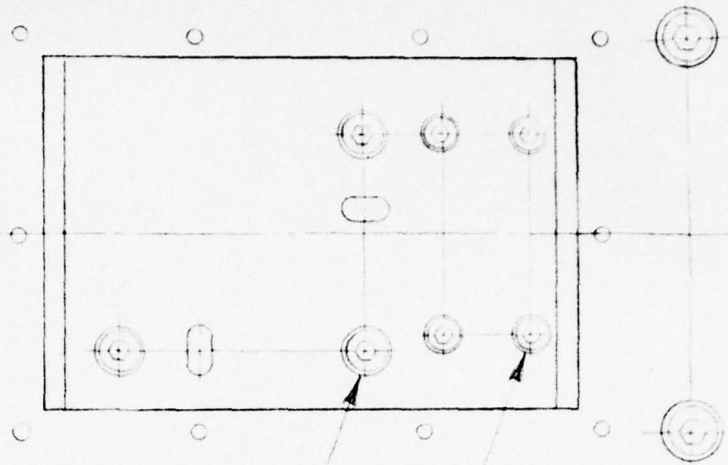
PLATE ASSEMBLY



GRATING TABLE ASSEMBLY

ALL WORK
 CLASS V
 OTHERWISE

1



12

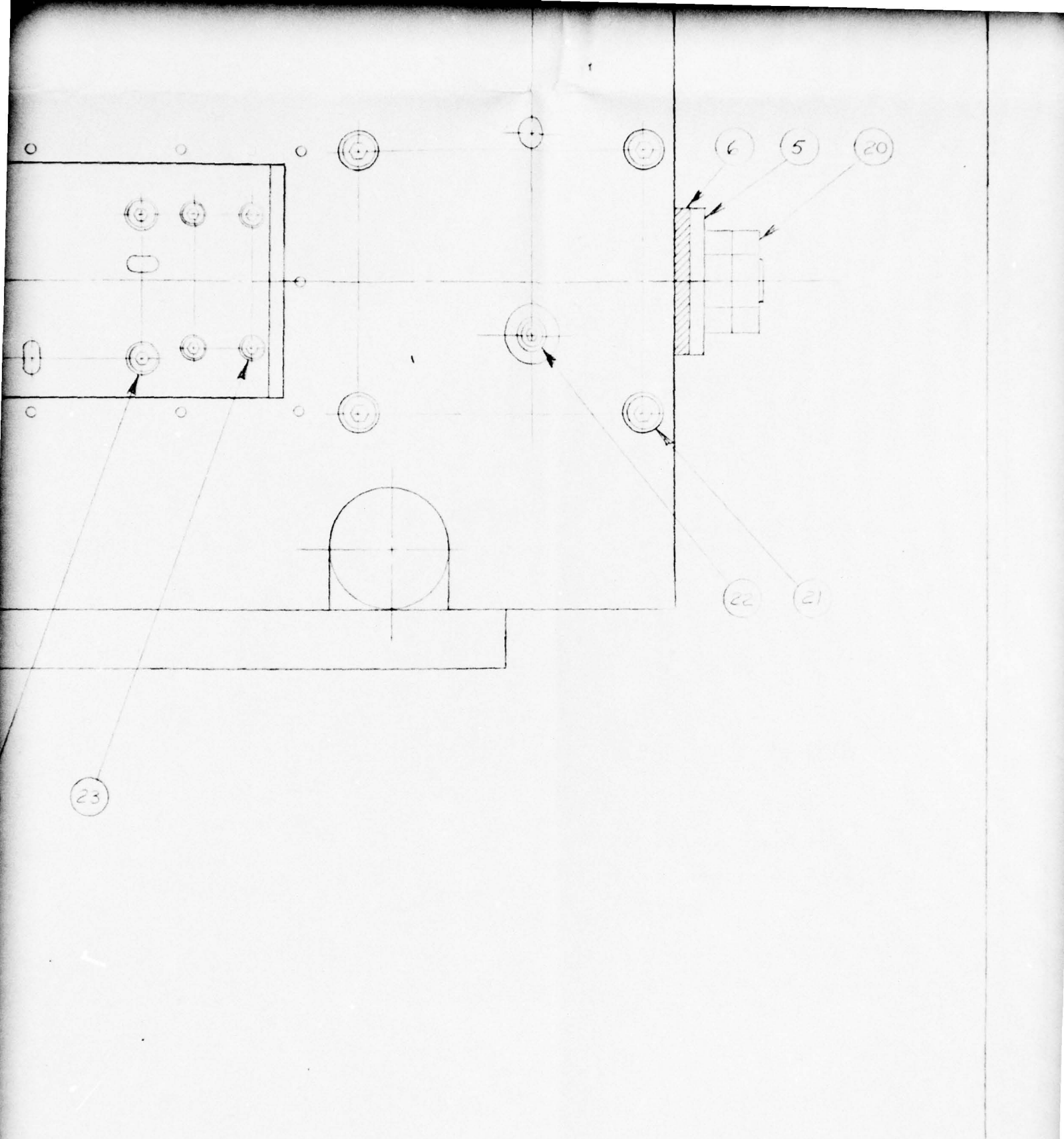
22

23

RATING TABLE ASSEMBLY

ALL WORK & MATERIAL MUST BE FIRST CLASS UNLESS SPECIFICALLY NOTED OTHERWISE

THE ELEC	
DATE	7-15-76
SCALE	FULL
DRAWN	J. GIBSON
CHECKED	
APPROVED	



THE OHIO STATE UNIVERSITY
ELECTROSCIENCE LABORATORY

NOT BE FIRST
FULLY NOTED

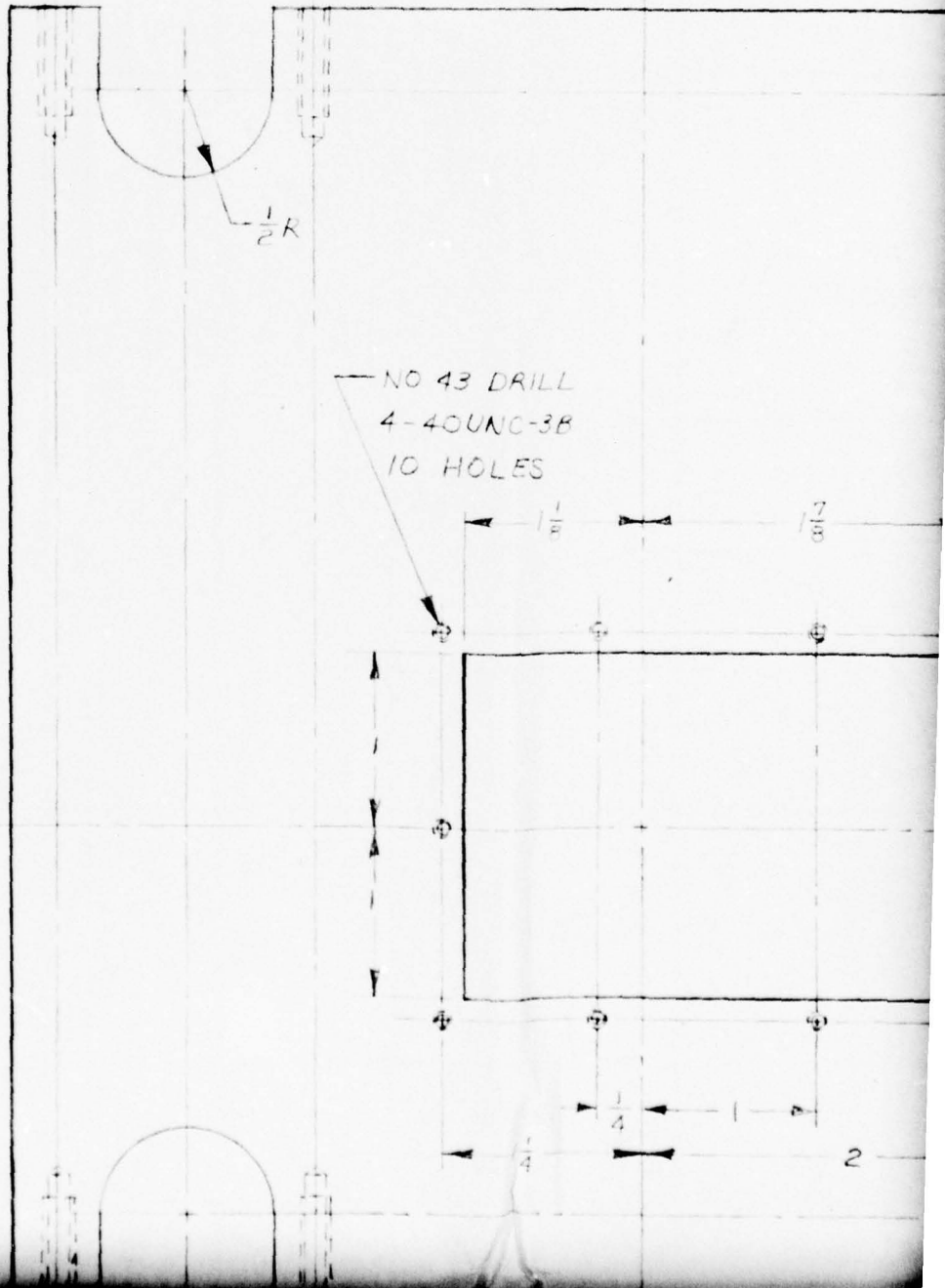
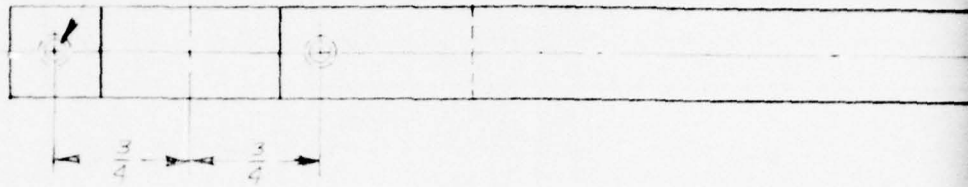
DATE 7-15-76
SCALE FULL
DRAWN J. GIBSON
CHECKED
APPROVED

GRATING TABLE

SHEET 1 OF 3
PROJECT 4420

D-429

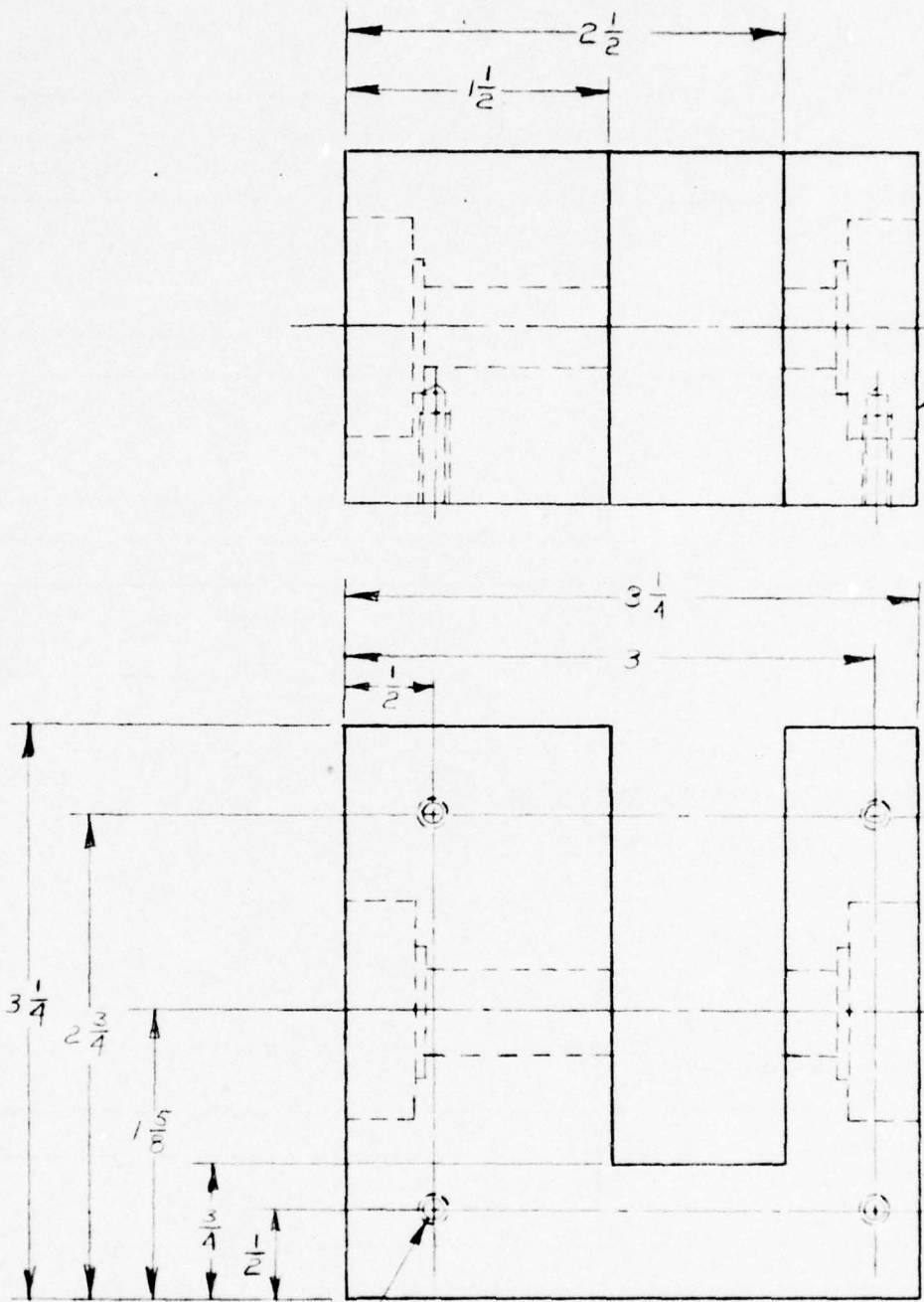
NO. 29 DRILL $\times \frac{3}{4}$ DEEP
8-32UNC-3B $\times \frac{5}{8}$ DEEP
8 HOLES



NO 43 DRILL
4-40UNC-3B
10 HOLES

3

C-3B



PUSH BEARING

1.2548 DIA.
.394 DEEP

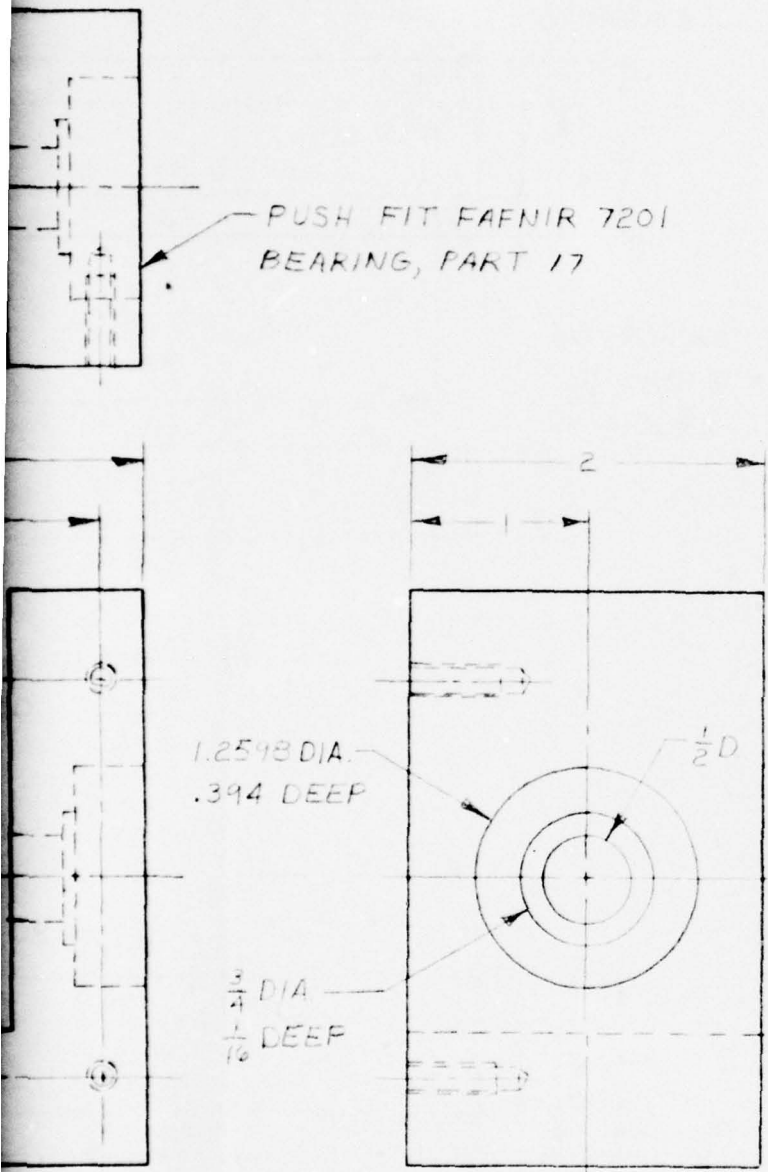
3/4 DIA
1/16 DEEP

7 1/2

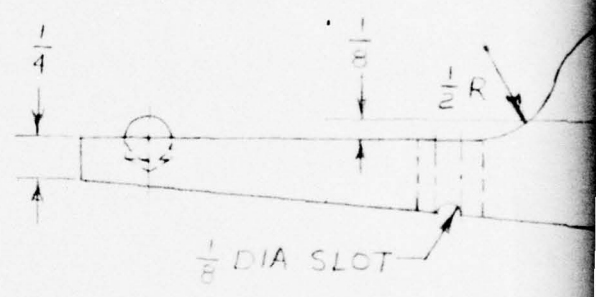
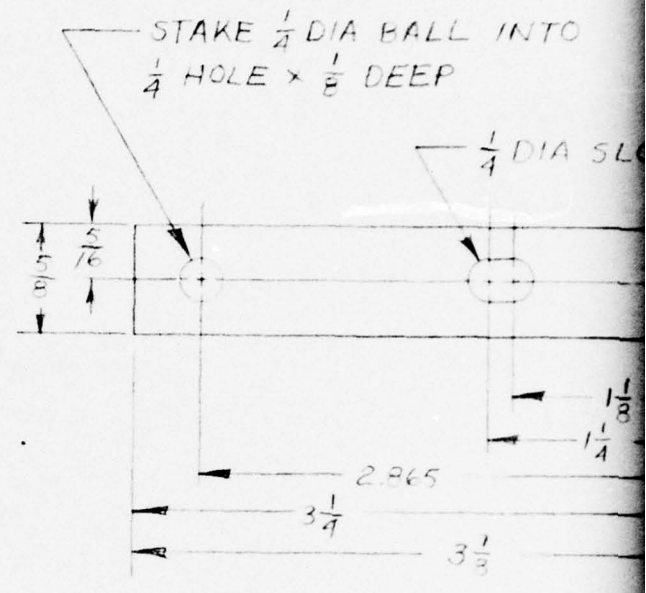
NO. 29 DRILL $\times \frac{5}{8}$ DEEP
 8-32 UNC-3B $\times \frac{1}{2}$ DEEP
 4 HOLES

(2) BASE
 ALUM ~ 1 REQD

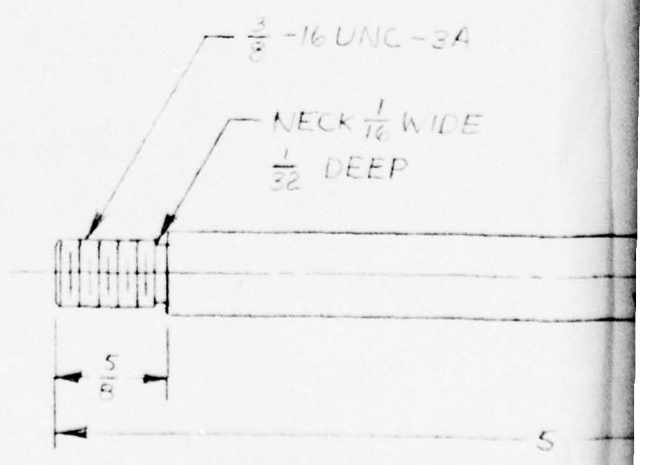
3/4



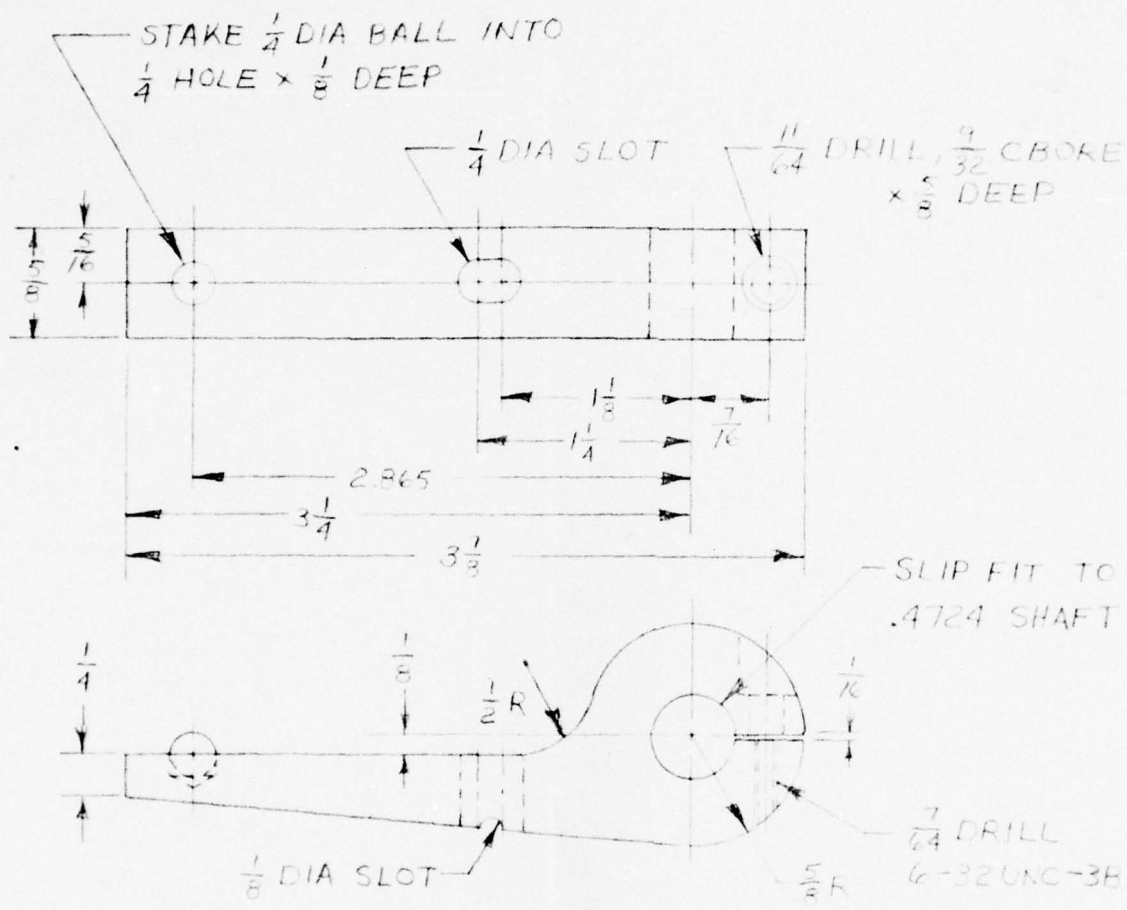
BASE
UM ~ 1 REQD



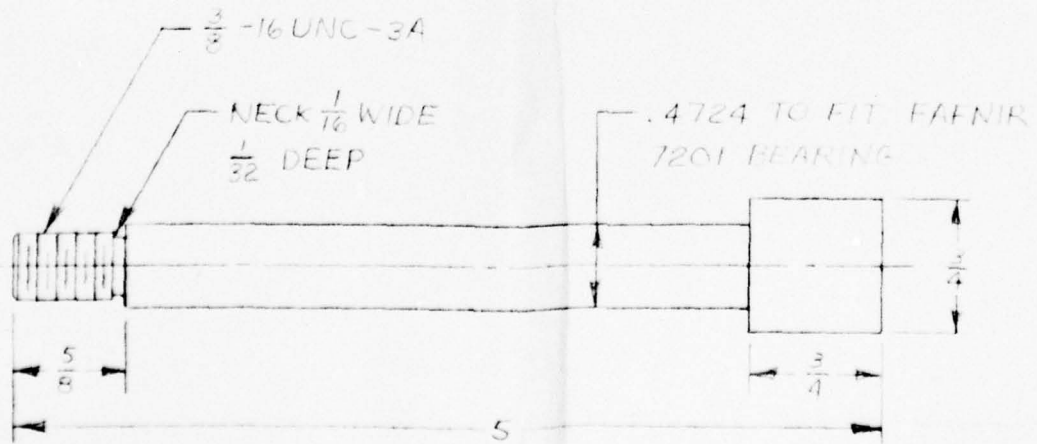
③ ARM
ALUM ~ 1 REQD



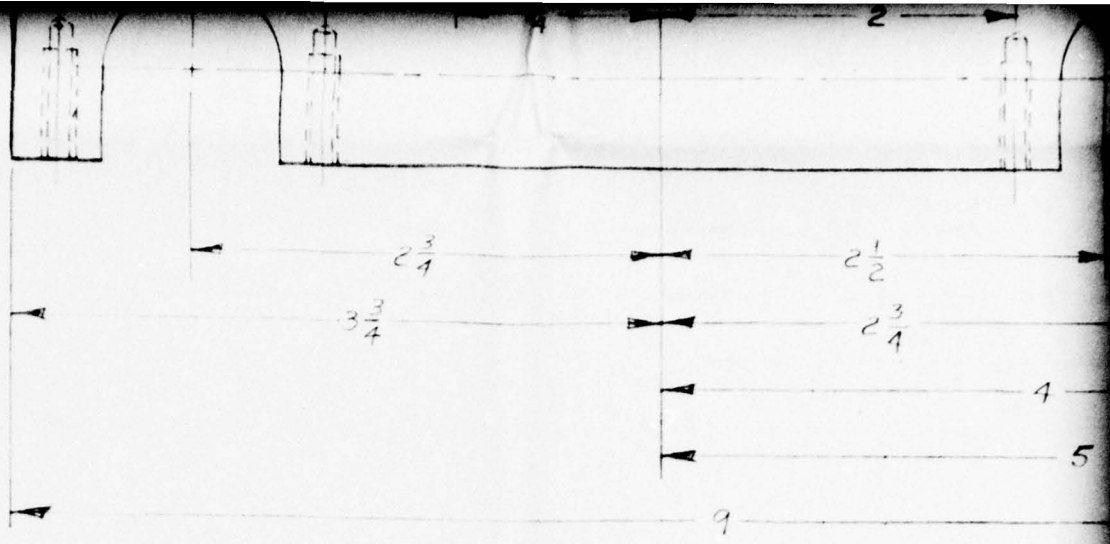
④ SHAFT
STN S...



③ ARM
ALUM ~ 1 REQD

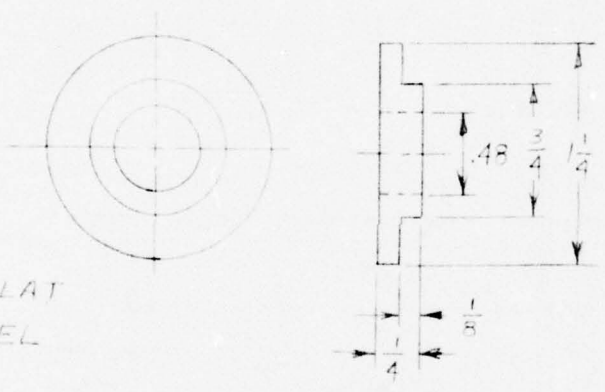


④ SHAFT
STN STL ~ 1 REQD

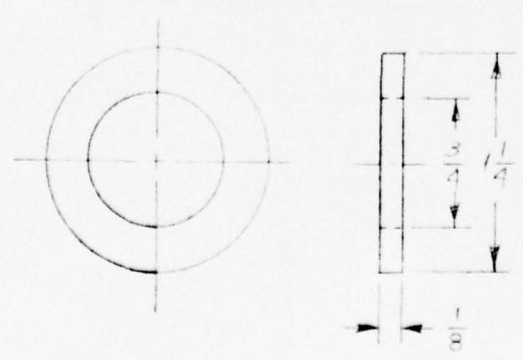


① GRATING MOUNT PLATE
ALUM ~ 1 REQD

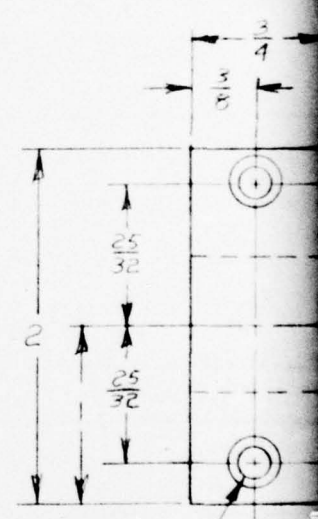
SURFACES FLAT
AND PARALLEL



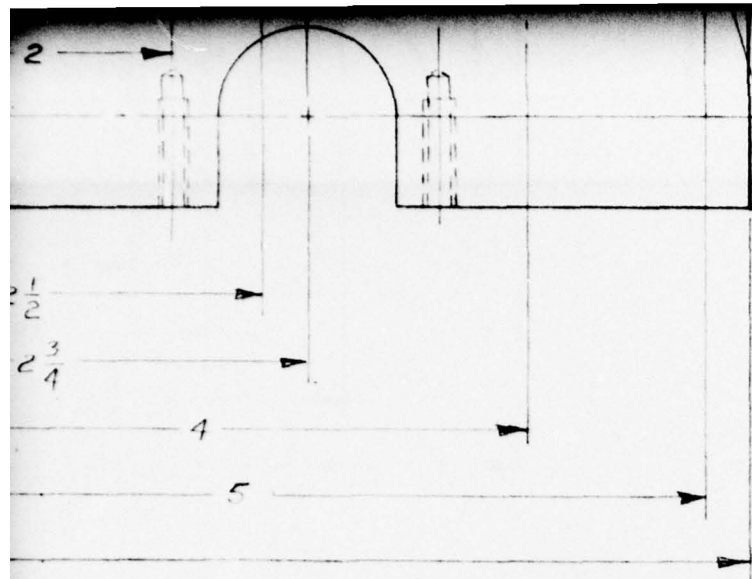
⑤ WASHER
ALUM ~ 2 REQD



⑥ SHIELD
FELT ~ 2 REQD



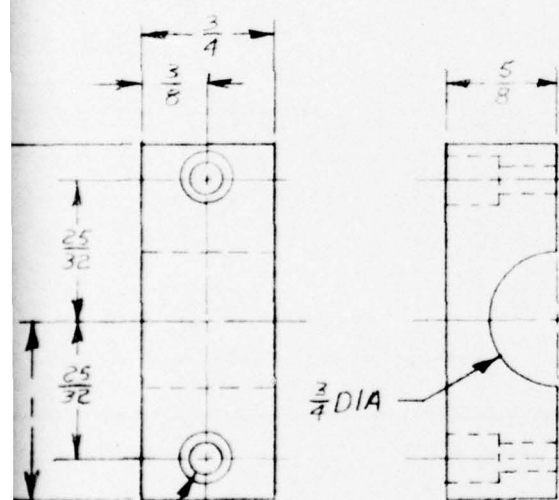
⑦ GRATING MOUNT PLATE
ALUM
NO. 25
9/32 CB
2 HOLE



NO. 19 DRILL CL HOLE FOR
 8-32 SCR, $\frac{21}{64}$ CBORE X $\frac{3}{16}$ DEEP
 4 HOLES

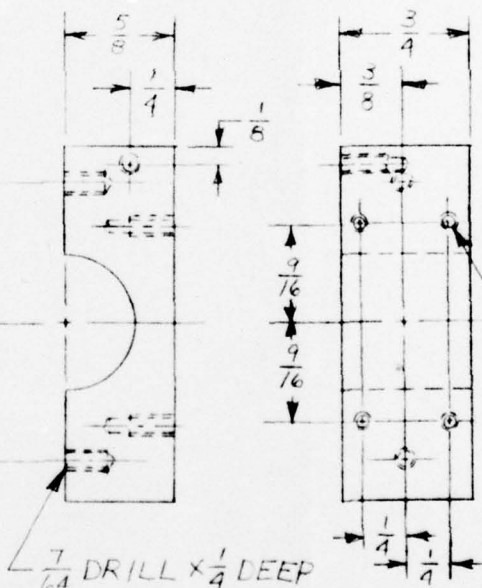
MOUNT PLATE

~ 1 REQD



NO. 29 DRILL
 $\frac{9}{32}$ CBORE X $\frac{5}{16}$ DEEP
 2 HOLES

⑦ GRATING TABLE-LEFT
 ALUM ~ 1 REQD

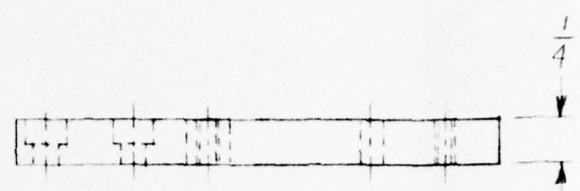


$\frac{7}{64}$ DRILL X $\frac{1}{4}$ DEEP
 6-32UNC-38 BOTTOM TAP
 2 HOLES

NO. 43 DRILL X $\frac{3}{8}$ DEEP
 4-40UNC-38 X $\frac{1}{4}$ DEEP
 5 HOLES

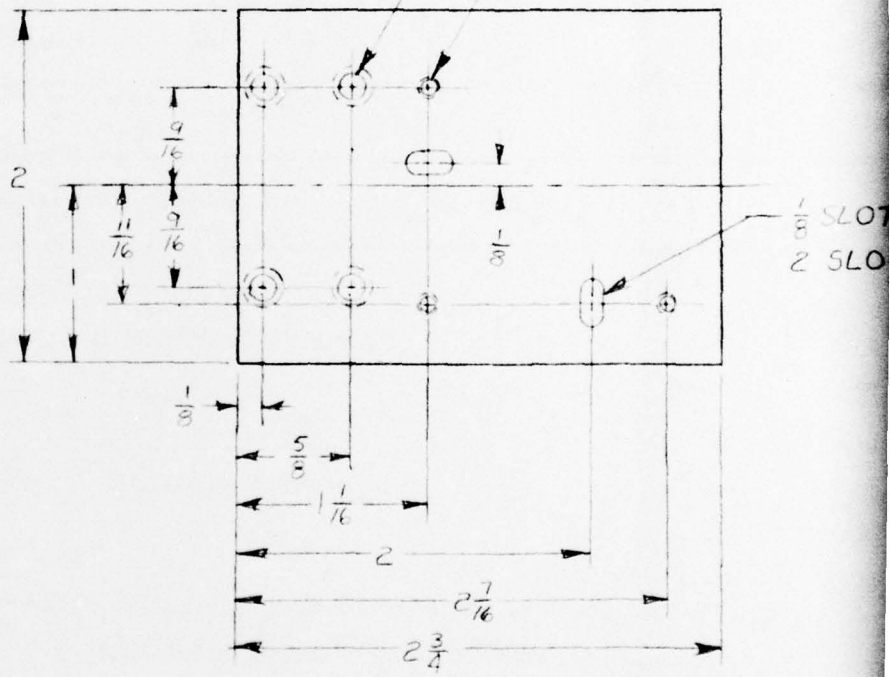
⑧ GRATING TABLE-RIGHT
 ALUM ~ 1 REQD

FOR
 RE x $\frac{3}{16}$ DEEP



NO. 33 DRILL CL HOLE FOR 4-40 SCR
 $\frac{7}{64}$ C BORE x $\frac{1}{8}$ DEEP, OPPOSITE
 SIDE, 4 HOLES

$\frac{7}{64}$ DRILL
 6-32UNC-3B
 3 HOLES



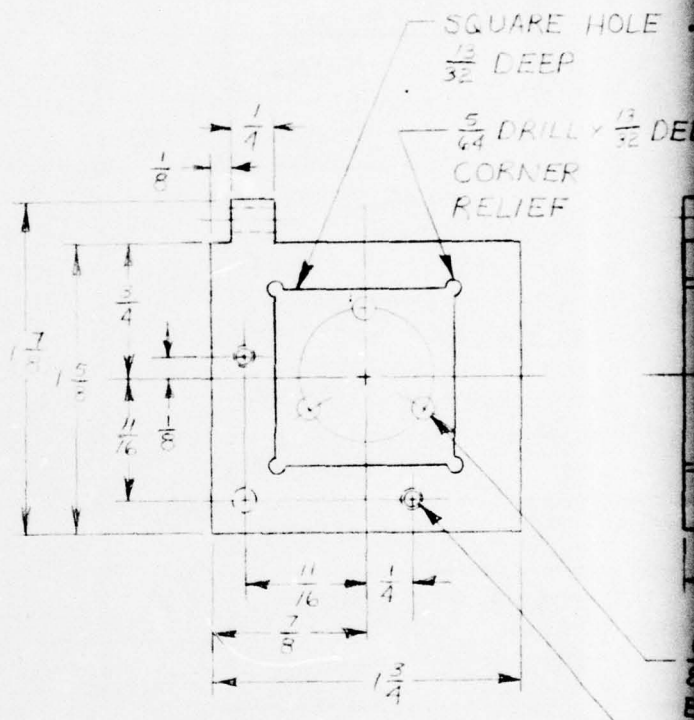
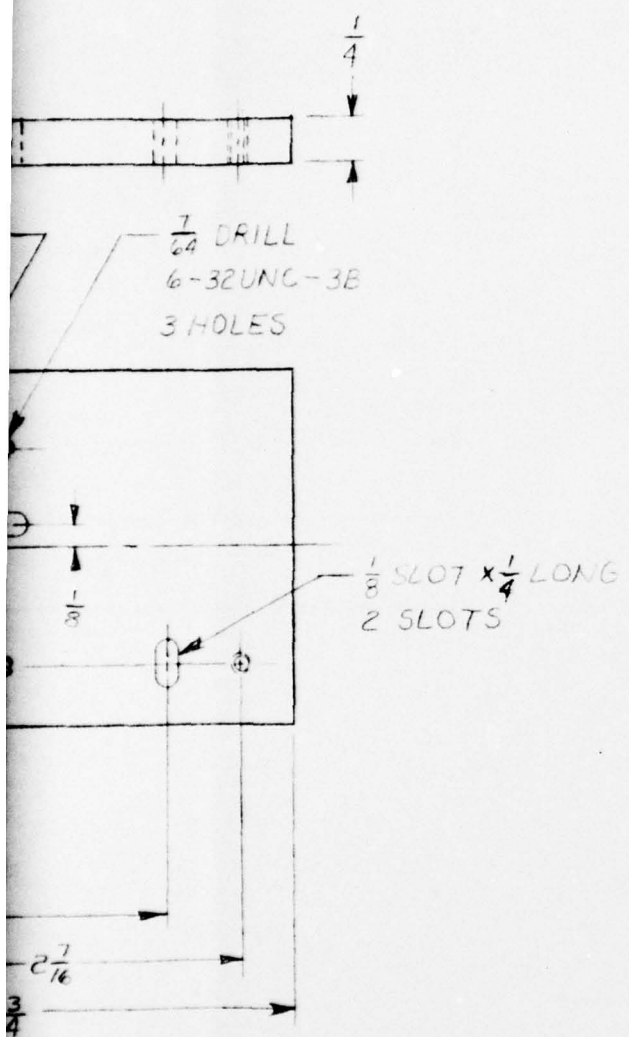
NO. 43 DRILL x $\frac{3}{8}$ DEEP
 4-40UNC-3B x $\frac{1}{4}$ DEEP
 5 HOLES

TAP

RIGHT

⑨ TABLE MOUNT
 ALUM ~ 1 REQD

4 SHAFT
STN STL ~ 1 REQ



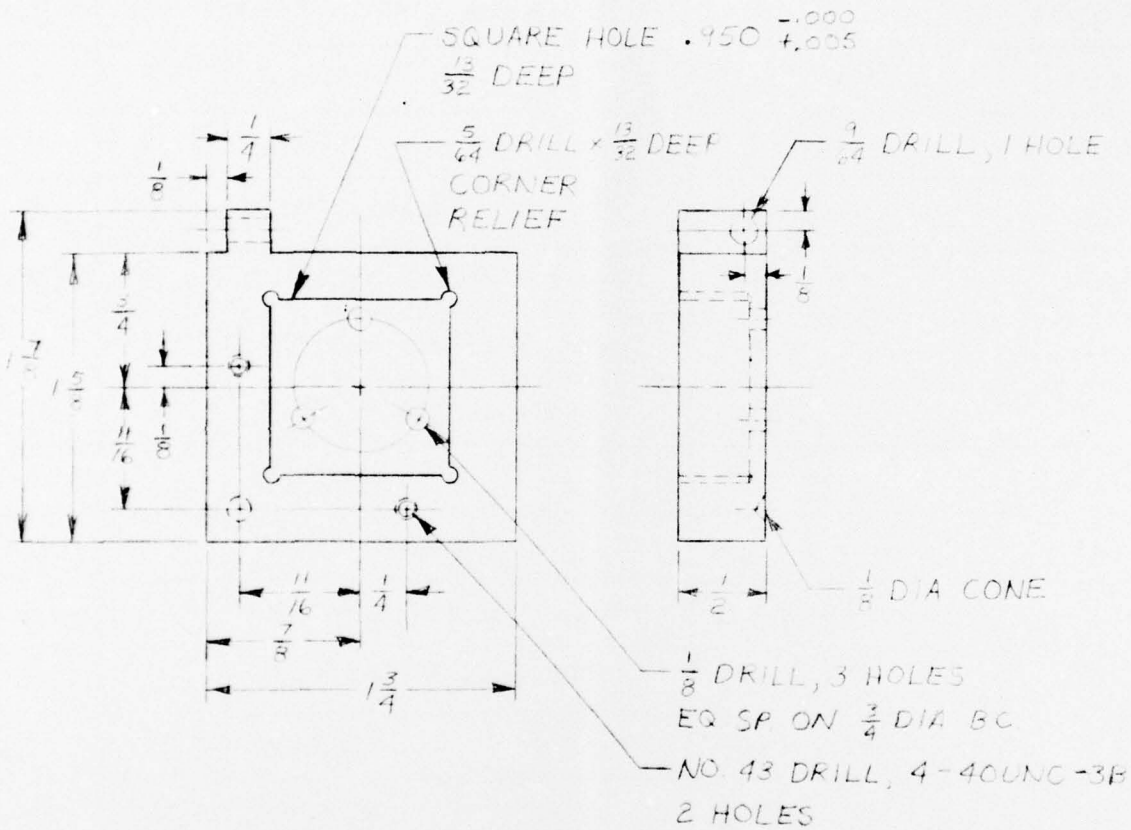
10 MOUNT
ALUM ~ 1 REQD

TABLE MOUNT
UM ~ 1 REQD

THE OHIO ST ELECTROSCIE	
DATE	7-15-76
SCALE	FULL
DRAWN	J. GIBSON
CHECKED	
APPROVED	

GRAT

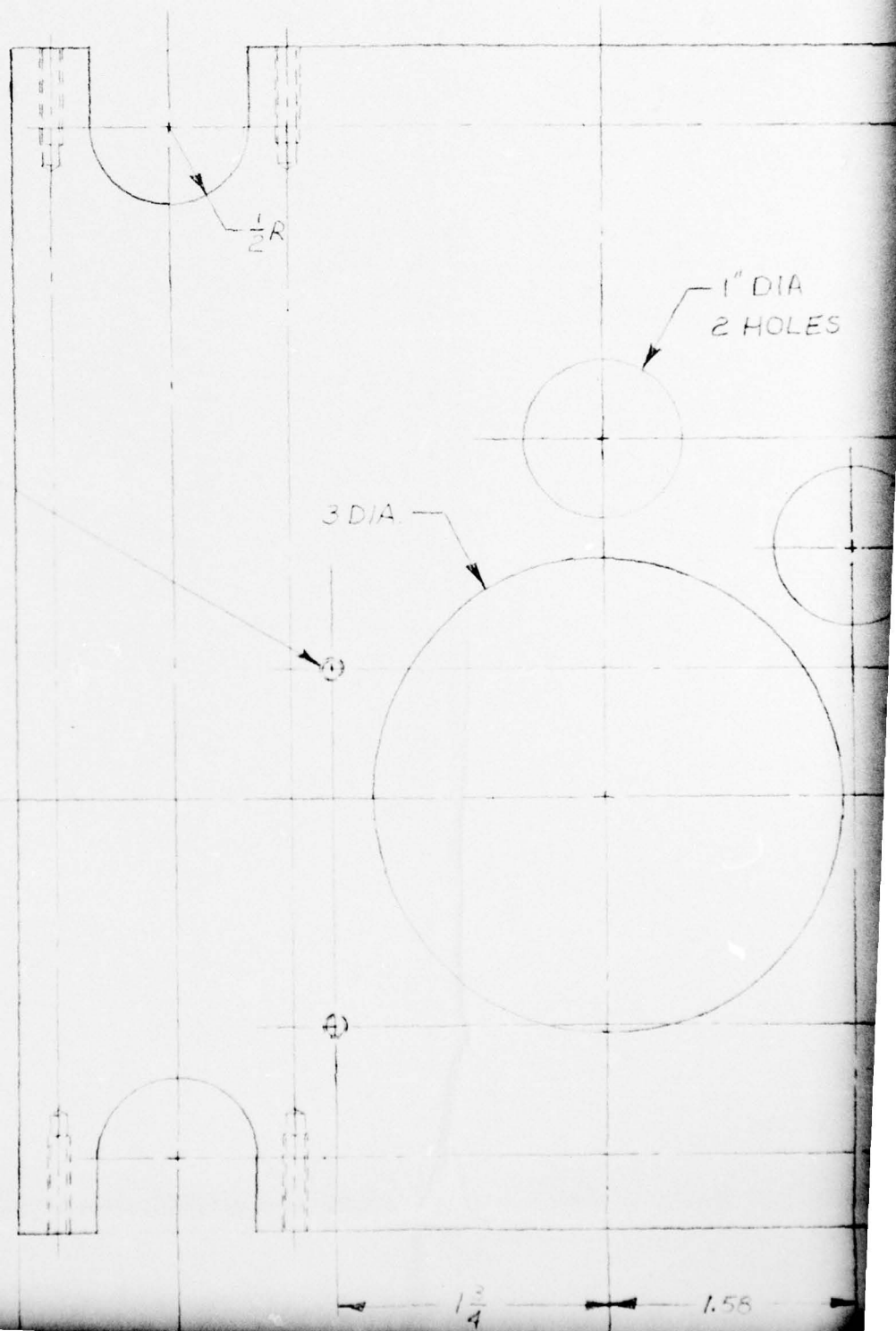
4 SHAFT
STN STL ~ 1 REQD



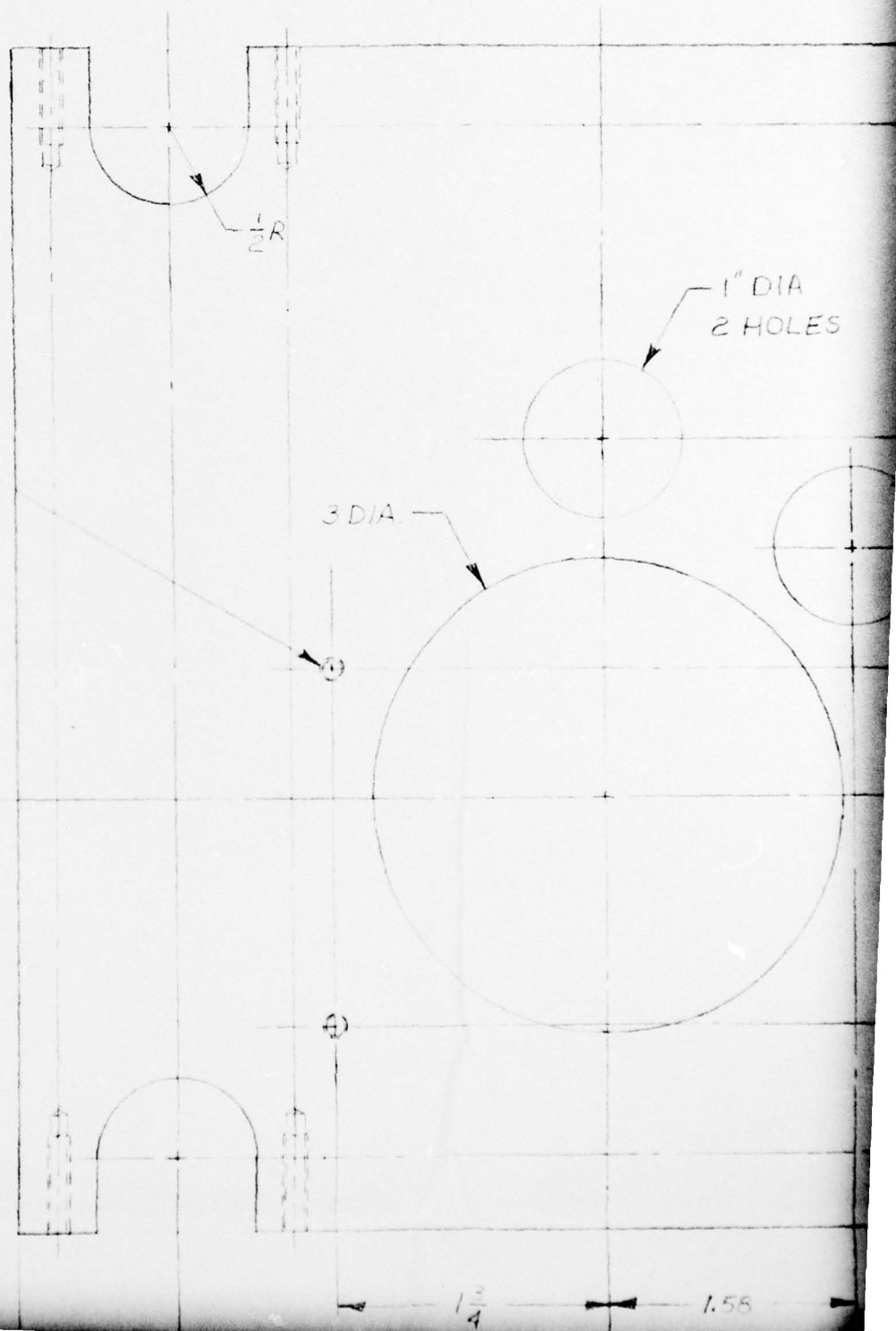
10 MOUNT
ALUM ~ 1 REQD

THE OHIO STATE UNIVERSITY ELECTROSCIENCE LABORATORY		
DATE 7-15-76	GRATING TABLE	SHEET 2 OF 3
SCALE FULL		PROJECT 4430
DRAWN J. GIBSON		D-429
CHECKED		
APPROVED		

NO 29 DRILL $\times \frac{3}{4}$ DEEP
8-32UNC-3B $\times \frac{5}{8}$ DEEP
6 HOLES

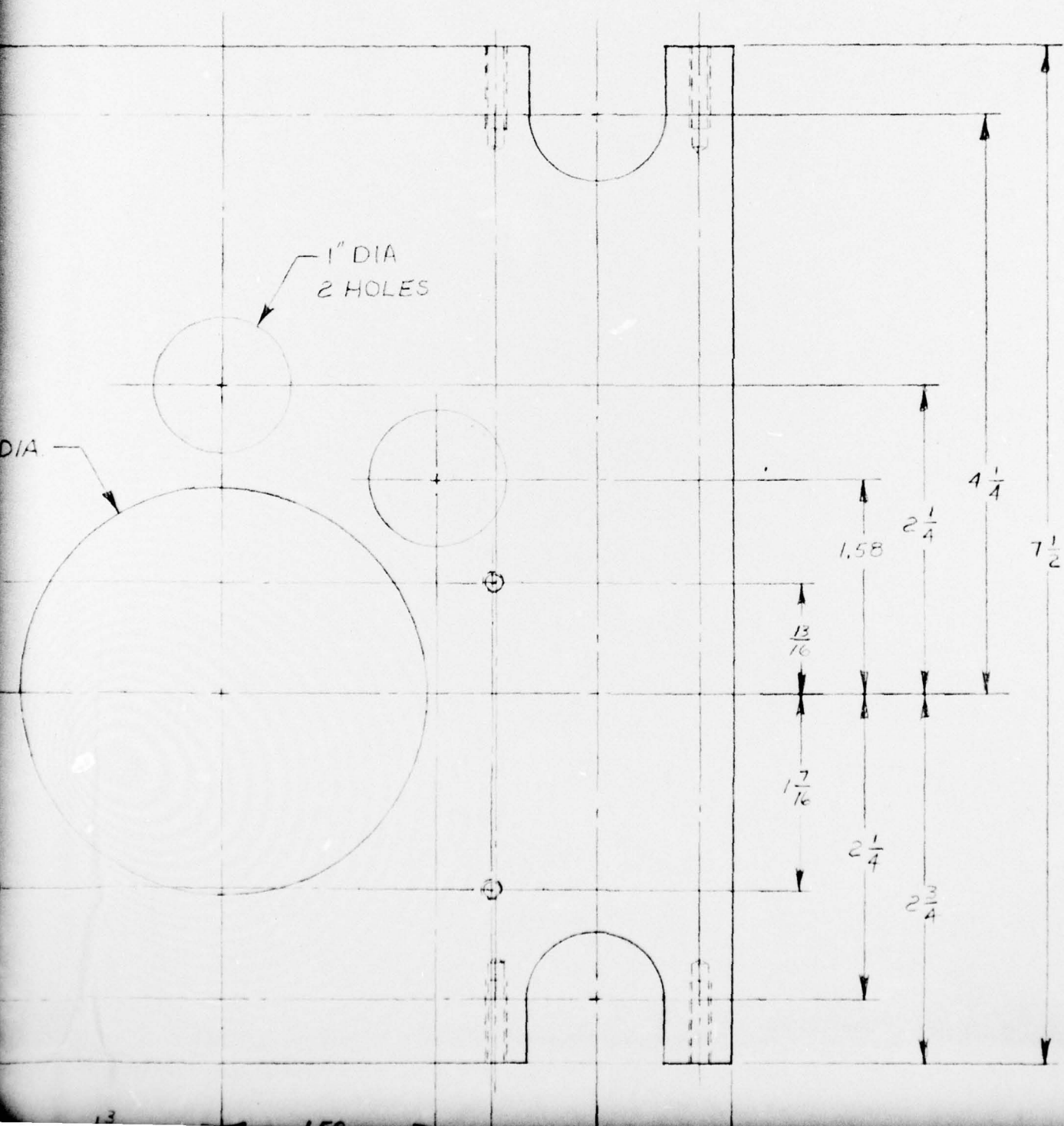
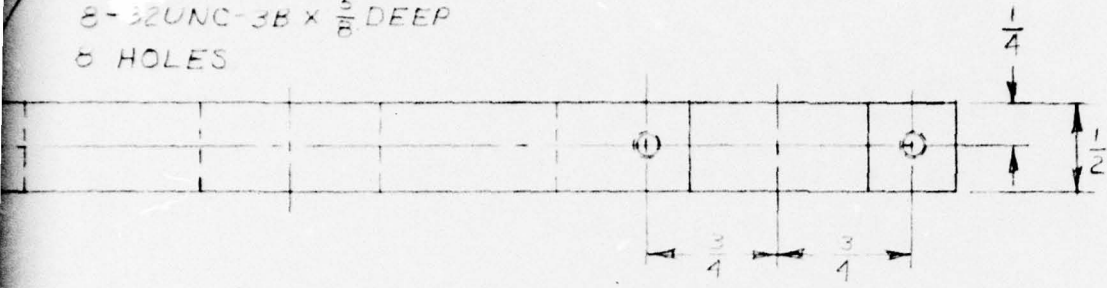


$\frac{1}{64}$ DRILL, 6-32UNC
4 HOLES

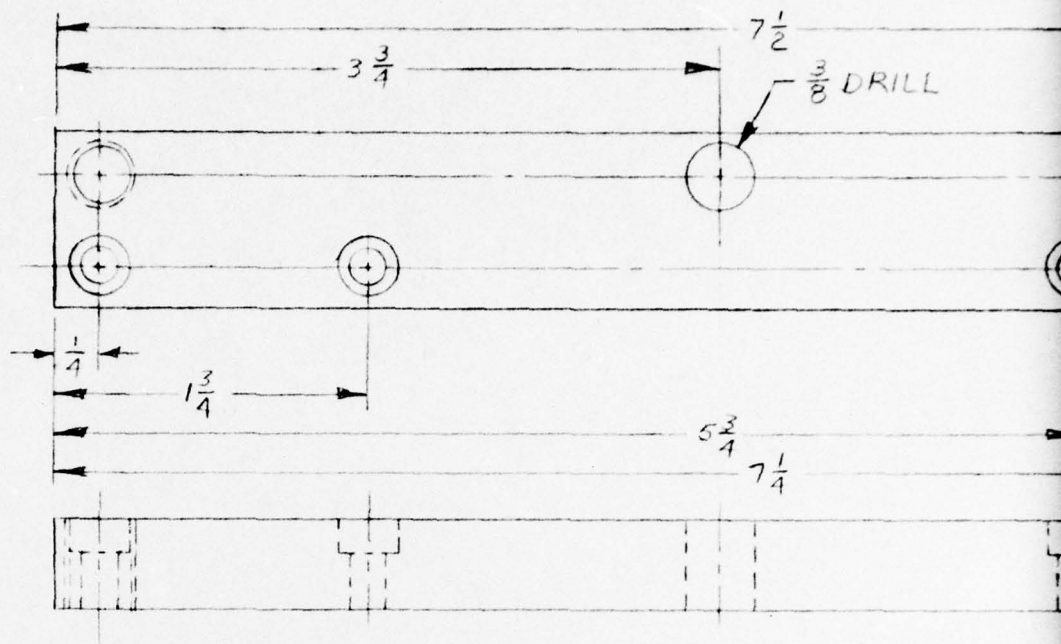


2

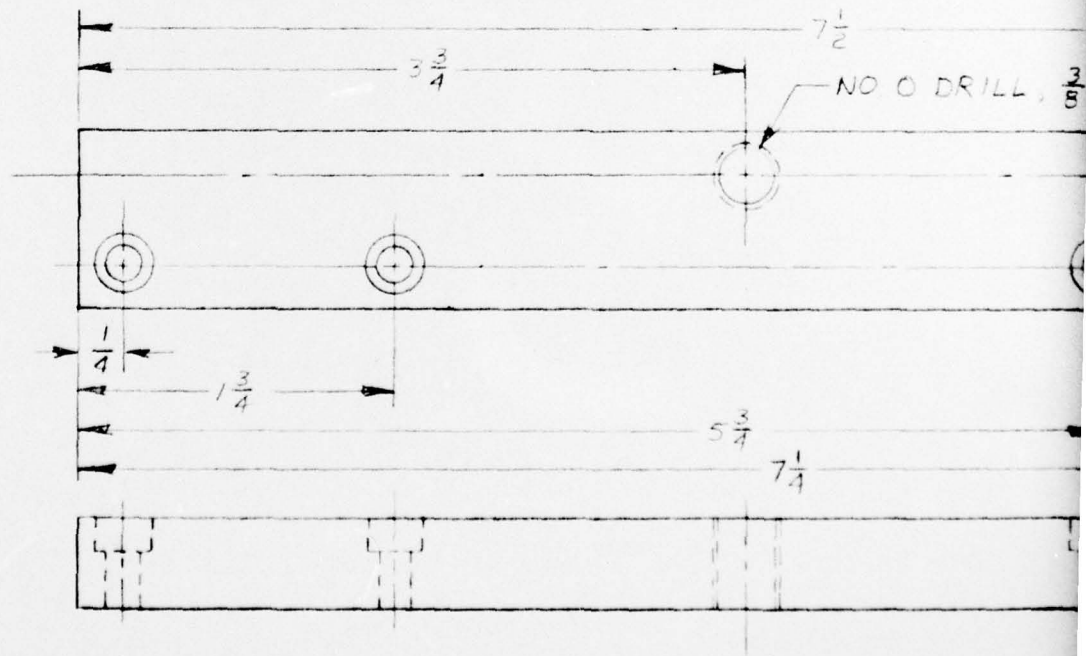
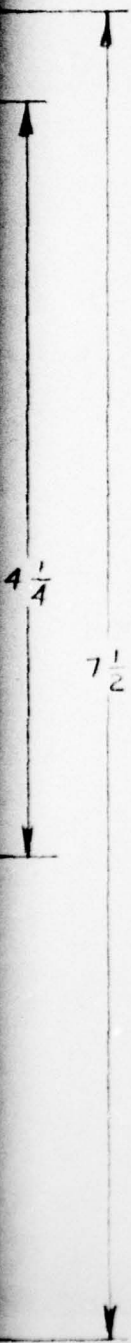
NO 29 DRILL $\times \frac{3}{4}$ DEEP
8-32UNC-3B $\times \frac{5}{8}$ DEEP
6 HOLES



4

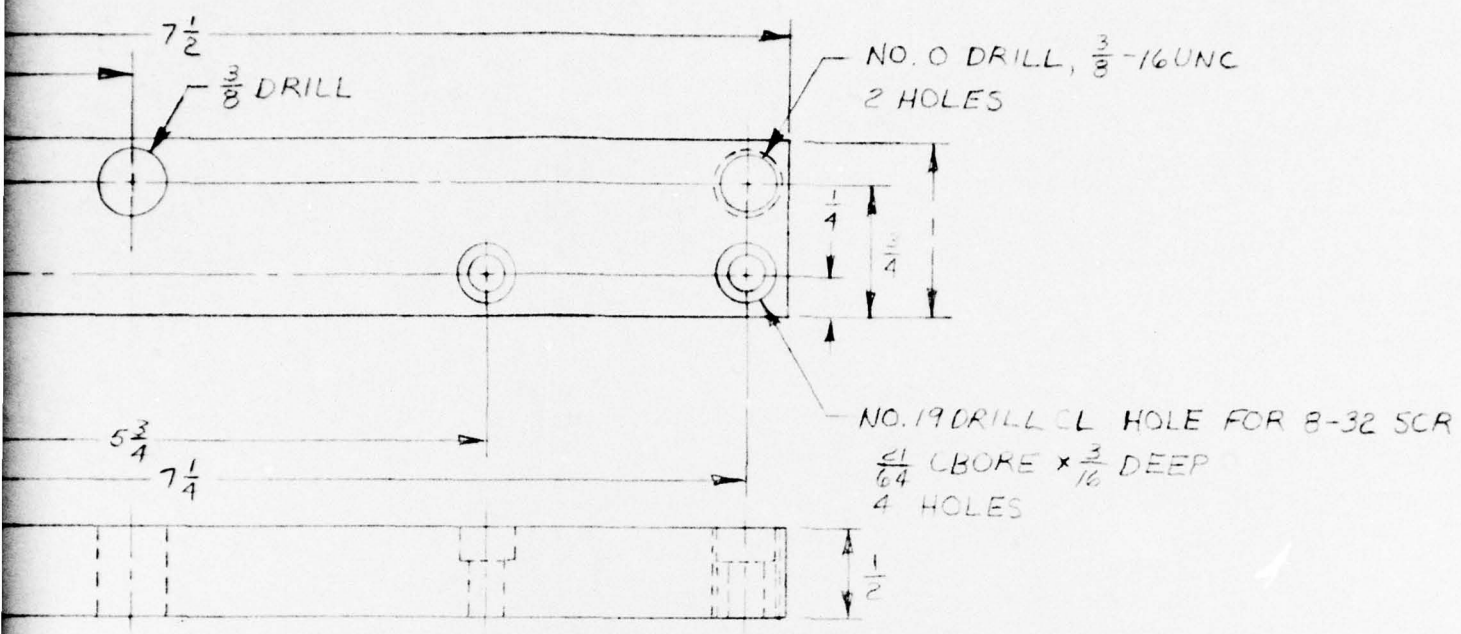


(12) BOTTOM GRATING CLAMP
ALUM ~ 1 REQD

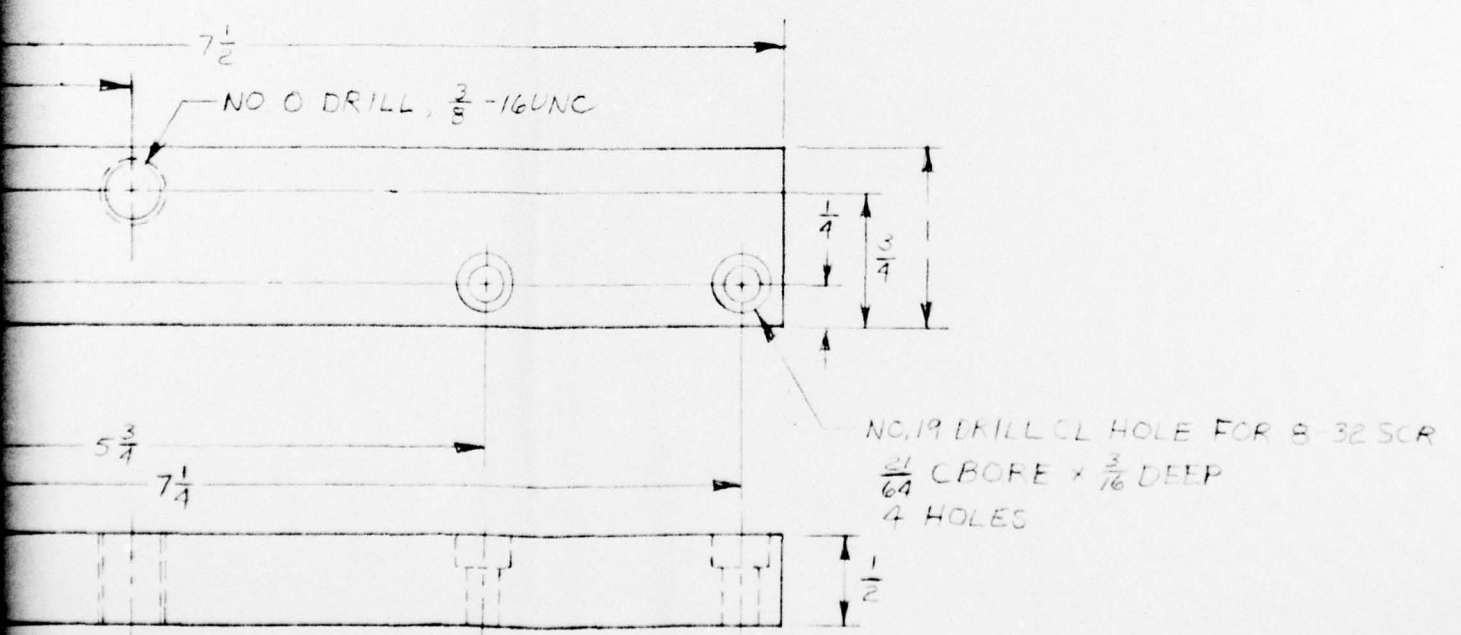


(13) BOTTOM OUTPUT CLAMP
ALUM ~ 1 REQD

4



BOTTOM GRATING CLAMP
ALUM ~ 1 REQD



BOTTOM OUTPUT CLAMP
ALUM ~ 1 REQD

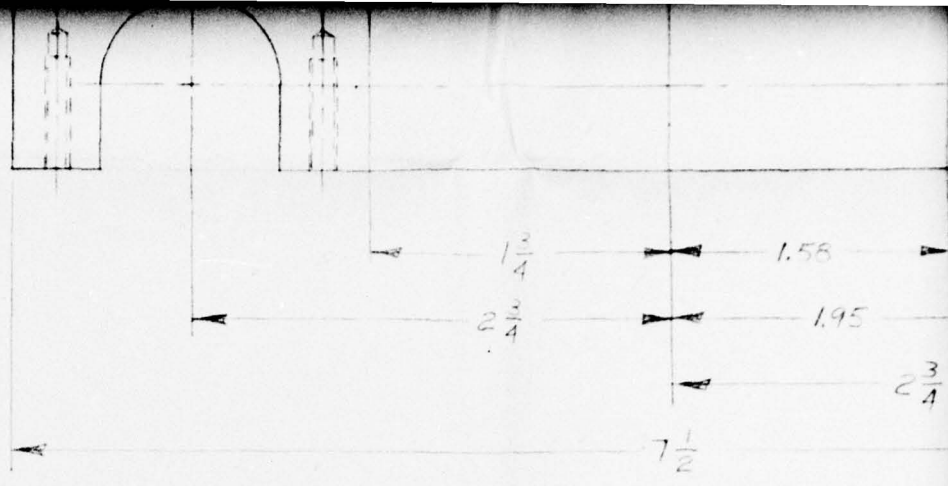
25	3	1	SPRING
24	3	3	SOC HD
23	3	4	SOC HD

DRILL, $\frac{3}{8}$ -16UNC
HOLES

DRILL CL HOLE FOR 8-32 SCR
BORE $\times \frac{3}{16}$ DEEP
HOLES

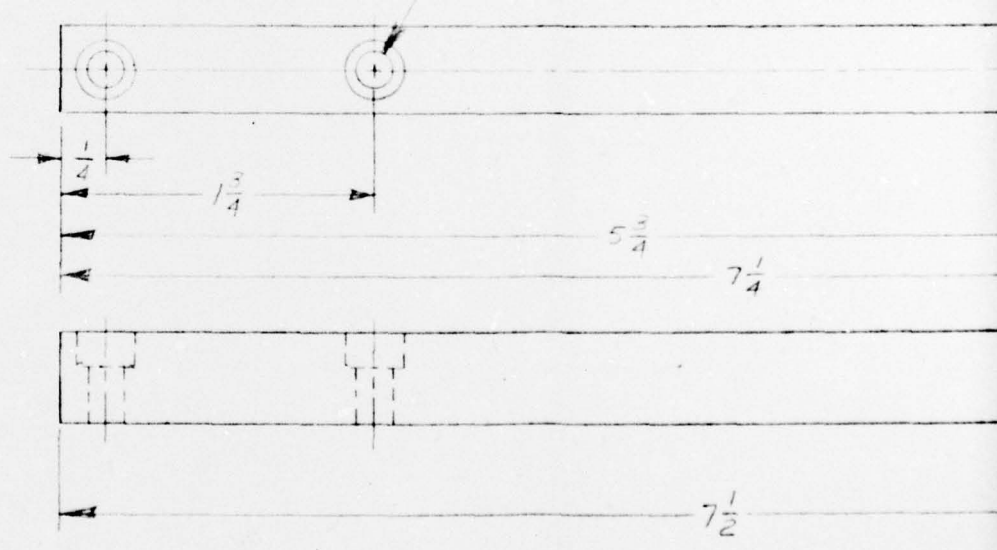
DRILL CL HOLE FOR 8-32 SCR
BORE $\times \frac{3}{16}$ DEEP
HOLES

25	3	1	SPRING	—	—
24	3	3	SOC HD CAP SCR	4-40UNC-3A $\times \frac{3}{4}$	STN STL
23	3	4	SOC HD CAP SCR	4-40UNC-3A $\times \frac{1}{4}$	STN STL
22	3	8	SOC HD CAP SCR	6-32UNC-3A $\times \frac{1}{2}$	STN STL

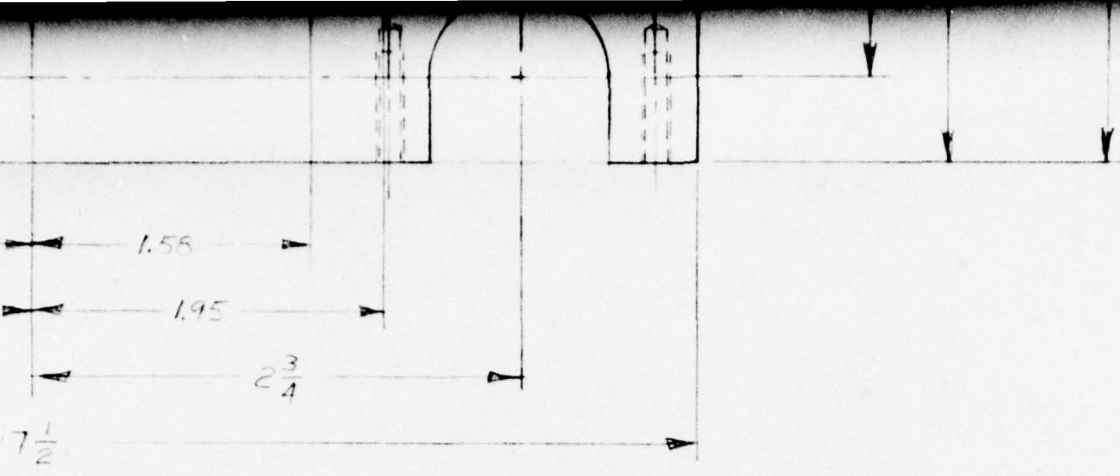


(11) OUTPUT MOUNT PLATE
ALUM ~ 1 REQD

NO. 17 DRILL CL HOLE FOR 8-32
 $\frac{21}{64}$ OBORE \times $\frac{3}{16}$ DEEP, 4 HOLES

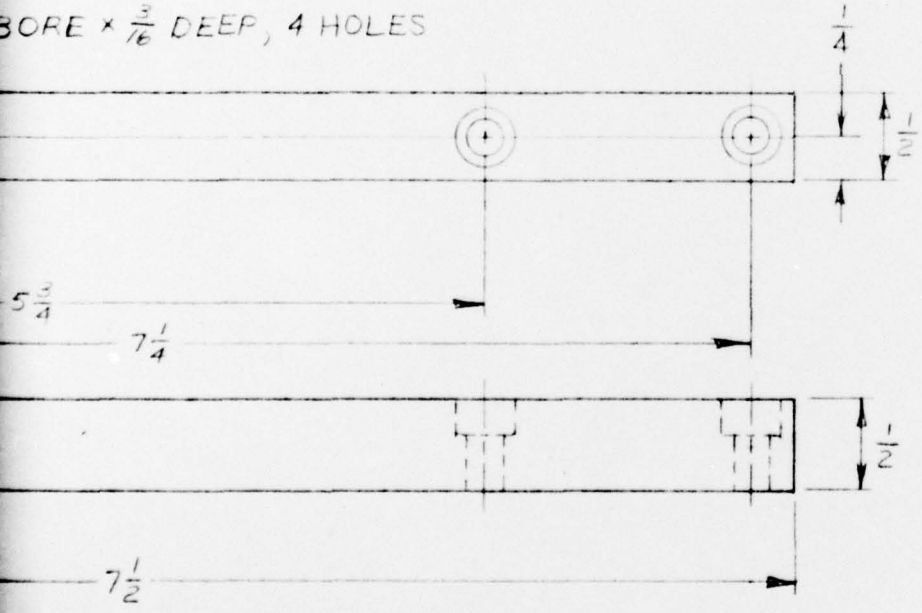


(14) TOP CLAMP
ALUM ~ 2 REQD



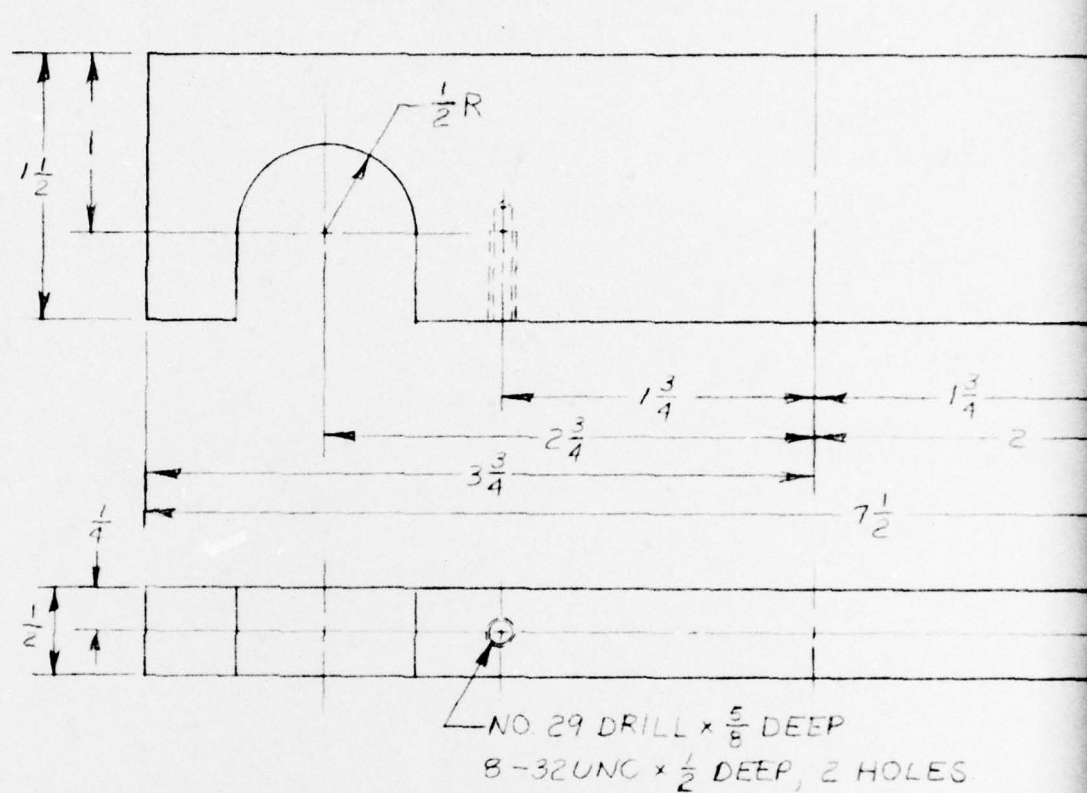
OUTPUT MOUNT PLATE
ALUM ~ 1 REQD

DRILL CL HOLE FOR 8-32 SCR
BORE $\times \frac{3}{16}$ DEEP, 4 HOLES



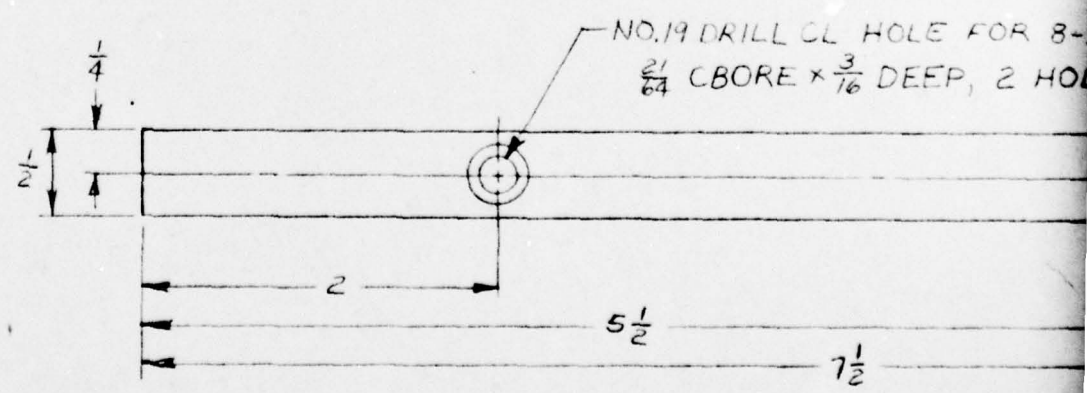
TOP CLAMP
M ~ 2 REQD

13 BOTTOM OUTPUT CLAMP
ALUM ~ 1 REQD



NO. 29 DRILL $\times \frac{5}{8}$ DEEP
8-32UNC $\times \frac{1}{2}$ DEEP, 2 HOLES.

15 MOUNT
ALUM ~ 8 REQD

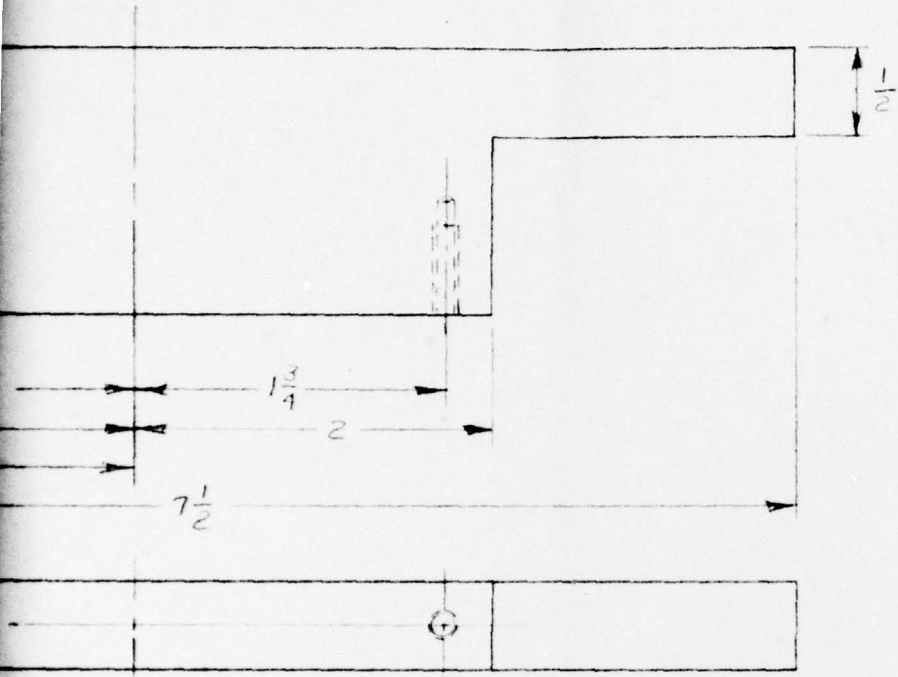


NO. 19 DRILL CL HOLE FOR 8-
 $\frac{21}{64}$ CBORE $\times \frac{3}{16}$ DEEP, 2 HOLES.

16 CLAMP
ALUM ~ 8 REQD

BOTTOM OUTPUT CLAMP

ALUM ~ 1 REQD

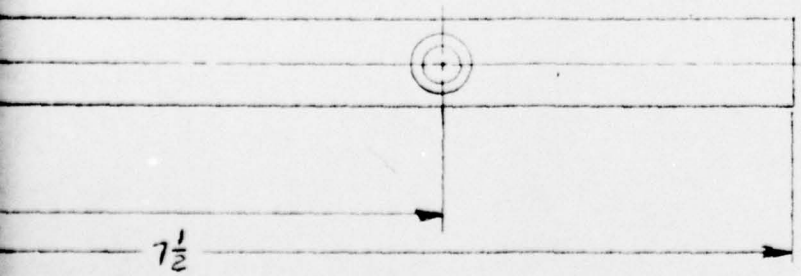


L x $\frac{5}{8}$ DEEP
 $\frac{1}{2}$ DEEP, 2 HOLES

(15) MOUNT

ALUM ~ 8 REQD

DRILL CL HOLE FOR 8-32 SCR
 CBORE x $\frac{3}{16}$ DEEP, 2 HOLES



(16) CLAMP

ALUM ~ 8 REQD

25	3	1	SPRIN
24	3	3	SOC H
23	3	4	SOC H
22	3	8	SOC H
21	3	36	SOC H
20	3	2	NUT
19	3	4	ROD
18	3	1	MICRO
17	2	2	FAFNIR
16	3	8	CLAMP
15	3	8	MOUN
14	3	2	TOP
13	3	1	BOTTO
12	3	1	BOTTO
11	3	1	OUTPU
10	2	1	MOUN
9	2	1	TABL
8	2	1	GRAT
7	2	1	GRAT
6	2	2	SHIE
5	2	2	WASH
4	2	1	SHAF
3	2	1	ARM
2	2	1	BAS
1	2	1	GRAT
PART	SHEET	REQD	D

25	3	1	SPRING	—	—
24	3	3	SOC HD CAP SCR	4-40UNC-3A x $\frac{3}{4}$	STN STL
23	3	4	SOC HD CAP SCR	4-40UNC-3A x $\frac{1}{4}$	STN STL
22	3	8	SOC HD CAP SCR	6-32UNC-3A x $\frac{1}{2}$	STN STL
21	3	36	SOC HD CAP SCR	8-32UNC-3A x $\frac{3}{4}$	STN STL
20	3	2	NUT	$\frac{3}{8}$ -16UNC-3B	STN STL
19	3	4	ROD	1" DIA.	—
18	3	1	MICROMETER	STAPRETT T465	—
17	2	2	FAFNIR 7201 BEARING	1.2598 OD, .3937 W, .4724 BORE	
16	3	8	CLAMP	$7\frac{1}{2} \times \frac{1}{2} \times \frac{1}{2}$	ALUM
15	3	8	MOUNT	$7\frac{1}{2} \times 1\frac{1}{2} \times \frac{1}{2}$	ALUM
14	3	2	TOP CLAMP	$7\frac{1}{2} \times \frac{1}{2} \times \frac{1}{2}$	ALUM
13	3	1	BOTTOM OUTPUT CLAMP	$7\frac{1}{2} \times 1 \times \frac{1}{2}$	ALUM
12	3	1	BOTTOM GRATING CLAMP	$7\frac{1}{2} \times 1 \times \frac{1}{2}$	ALUM
11	3	1	OUTPUT MOUNT PLATE	$7\frac{1}{2} \times 7\frac{1}{2} \times \frac{1}{2}$	ALUM
10	2	1	MOUNT	$1\frac{3}{4} \times 1\frac{7}{8} \times \frac{1}{2}$	ALUM
9	2	1	TABLE MOUNT	$2\frac{3}{4} \times 2 \times \frac{1}{2}$	ALUM
8	2	1	GRATING TABLE - RIGHT	$2 \times \frac{3}{4} \times \frac{5}{8}$	ALUM
7	2	1	GRATING TABLE - LEFT	$2 \times \frac{3}{4} \times \frac{5}{8}$	ALUM
6	2	2	SHIELD	$\frac{1}{8} \times 1\frac{1}{4}$ DIA	FELT
5	2	2	WASHER	$\frac{1}{4} \times 1\frac{1}{4}$ DIA	ALUM
4	2	1	SHAFT	$5 \times \frac{3}{4}$ DIA	STN STL
3	2	1	ARM	$3\frac{1}{8} \times 1\frac{1}{4} \times \frac{5}{8}$	ALUM
2	2	1	BASE	$3\frac{1}{4} \times 3\frac{1}{4} \times 2$	ALUM
1	2	1	GRATING MOUNT PLATE	$9 \times 7\frac{1}{2} \times \frac{1}{2}$	ALUM
PART	SHEET	QTY	DESCRIPTION	SIZE	MATERIAL

THE OHIO STATE UNIVERSITY
ELECTROSCIENCE LABORATORY

DATE 7-15-76

SCALE FULL

DRAWN J GIBSON

CHECKED

SHEET 3 OF 3

PROJECT 4430

GRATING TABLE

D-429