

AO-A041 895

NAVY CLOTHING AND TEXTILE RESEARCH FACILITY NATICK MASS F/G 15/5
A NEW KNIT WATCH CAP: A DESIGN AND FIELD EVALUATION STUDY.(U)
JUN 77 M W PINE

UNCLASSIFIED

TR-128

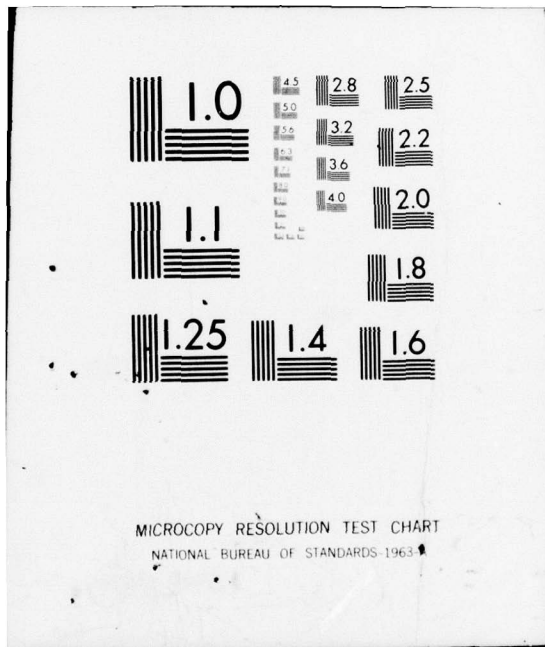
NL

OF
AD A 041895



END

DATE
FILMED
8-77



MICROCOPY RESOLUTION TEST CHART
NATIONAL BUREAU OF STANDARDS-1963-A

ADA 041895

12
B.S.

A NEW KNIT WATCH CAP: A DESIGN AND FIELD EVALUATION STUDY



DDC
RECEIVED
JUL 22 1977
RECEIVED
A

NAVY CLOTHING AND TEXTILE RESEARCH FACILITY
NATICK, MASSACHUSETTS

No. _____
DC FILE COPY

Approved for public release;
distribution unlimited

TECHNICAL REPORT NO. 128

14 TR-128, 3-77

UNCLASSIFIED

SECURITY CLASSIFICATION OF THIS PAGE (When Data Entered)

REPORT DOCUMENTATION PAGE		READ INSTRUCTIONS BEFORE COMPLETING FORM
1. REPORT NUMBER 128	2. GOVT ACCESSION NO.	3. RECIPIENT'S CATALOG NUMBER
4. TITLE (and Subtitle) A NEW KNIT WATCH CAP: A DESIGN AND FIELD EVALUATION STUDY	5. TYPE OF REPORT & PERIOD COVERED Final Technical Report (Oct. 1976-Dec. 1976)	
7. AUTHOR(s) Manuel W. Pine	6. PERFORMING ORG. REPORT NUMBER 3-77	
9. PERFORMING ORGANIZATION NAME AND ADDRESS Navy Clothing and Textile Research Facility 21 Strathmore Road Natick, MA 01760	8. CONTRACT OR GRANT NUMBER(s)	
11. CONTROLLING OFFICE NAME AND ADDRESS Same as 9	10. PROGRAM ELEMENT, PROJECT, TASK AREA & WORK UNIT NUMBERS 29-001-38	
14. MONITORING AGENCY NAME & ADDRESS (if different from Controlling Office)	12. REPORT DATE June 1977	
	13. NUMBER OF PAGES 127 p.	
	15. SECURITY CLASS. (of this report) UNCLASSIFIED	
	15a. DECLASSIFICATION/DOWNGRADING SCHEDULE	
16. DISTRIBUTION STATEMENT (of this Report) Approved for public release; distribution unlimited.		
17. DISTRIBUTION STATEMENT (of the abstract entered in Block 20, if different from Report) Same as 16		
18. SUPPLEMENTARY NOTES		
19. KEY WORDS (Continue on reverse side if necessary and identify by block number) Wool Knit Watch Cap; Dial and Cylinder Circular Knitting Machine; Four-Dart-Closure Crown		
20. ABSTRACT (Continue on reverse side if necessary and identify by block number) The Navy Clothing and Textile Research Facility (NCTRF) conducted a field evaluation study of a knit watch cap made of 100% wool and with a process representative of many hat manufacturers throughout the related specialty knitting trade to determine its feasibility for possible adoption by the Navy. This study was necessitated because one manufacturer has made the standard knit watch cap the past 5 years, resulting in a continually escalating cost per unit. The proposed knit watch cap was found to be comparable in all respects with the standard knit watch cap also made of 100% wool.		

DDC
DEFENSE
JUL 22 1977
REGISTERED
A

UNCLASSIFIED

SECURITY CLASSIFICATION OF THIS PAGE(When Data Entered)

particular in regard to its most desired characteristics of warmth and comfort. Based on the conclusion from the study, NCTRF recommends that the proposed knit watch cap construction be included as an alternative to the standard knit watch cap construction. We also feel that a more receptive response to Invitation for Bids promulgated by the government will be realized. (U)

UNCLASSIFIED

SECURITY CLASSIFICATION OF THIS PAGE(When Data Entered)

TABLE OF CONTENTS

	<u>Page</u>
List of Illustrations	iv
Introduction	1
Design and Construction	1
Survey of Cap Manufacturers	1
Test Site and Data	4
Conclusion and Recommendation	4
Appendix A. Summary of Field Test Results	A-1

ACCESSION TO	
RTD	Write Section <input checked="" type="checkbox"/>
DRS	Staff Section <input type="checkbox"/>
UNANNOUNCED	<input type="checkbox"/>
JUSTIFICATION	
BY	
DISTRIBUTION/AVAILABILITY CODES	
Dist.	AVAIL. CODE OR SPECIAL

LIST OF ILLUSTRATIONS

<u>Figure</u>		<u>Page</u>
1.	Design and Construction of Prototype Knit watch Cap	2
2.	Design and Construction of Standard Issue Knit Watch Cap	3

A NEW KNIT WATCH CAP: A DESIGN AND FIELD EVALUATION STUDY

INTRODUCTION

The Navy Clothing and Textile Research Facility (NCTRF) conducted a 90-day wear test program on a prototype knit watch cap made of 100% wool and constructed by a process representative of many commercial hat manufacturers throughout the related specialty knitting trade. To encourage a better response to Invitation for Bids for the standard knit watch cap as specified in Military Specification MIL-C-16472, this program was initiated to determine the feasibility of using the prototype knit watch cap as an alternate construction. The standard knit watch cap is issued to all Naval male personnel as a bag item, with an annual drawdown of about 190,000 caps. In addition, the Department of the Air Force procures almost 35,000 annually for issue as an optional item. The Defense Personnel Support Center, Philadelphia, PA, has procured over 1.5 million knit watch caps since 1969.

This report will discuss the comparable design characteristics of the prototype and the standard knit watch caps and summarize the field test data.

DESIGN AND CONSTRUCTION

The design and construction processes of the comparable prototype and standard issued watch caps are illustrated in Figures 1 and 2. Although the finished knit watch caps are similar in appearance and equally serviceable, two different and distinct knitting machines are required to achieve the finished results. The prototype knit watch cap was constructed on the Tompkins dial and cylinder circular knitting machine. This readily available knitting machine is being used exclusively throughout the major portion of the specialty hat knitting trade.

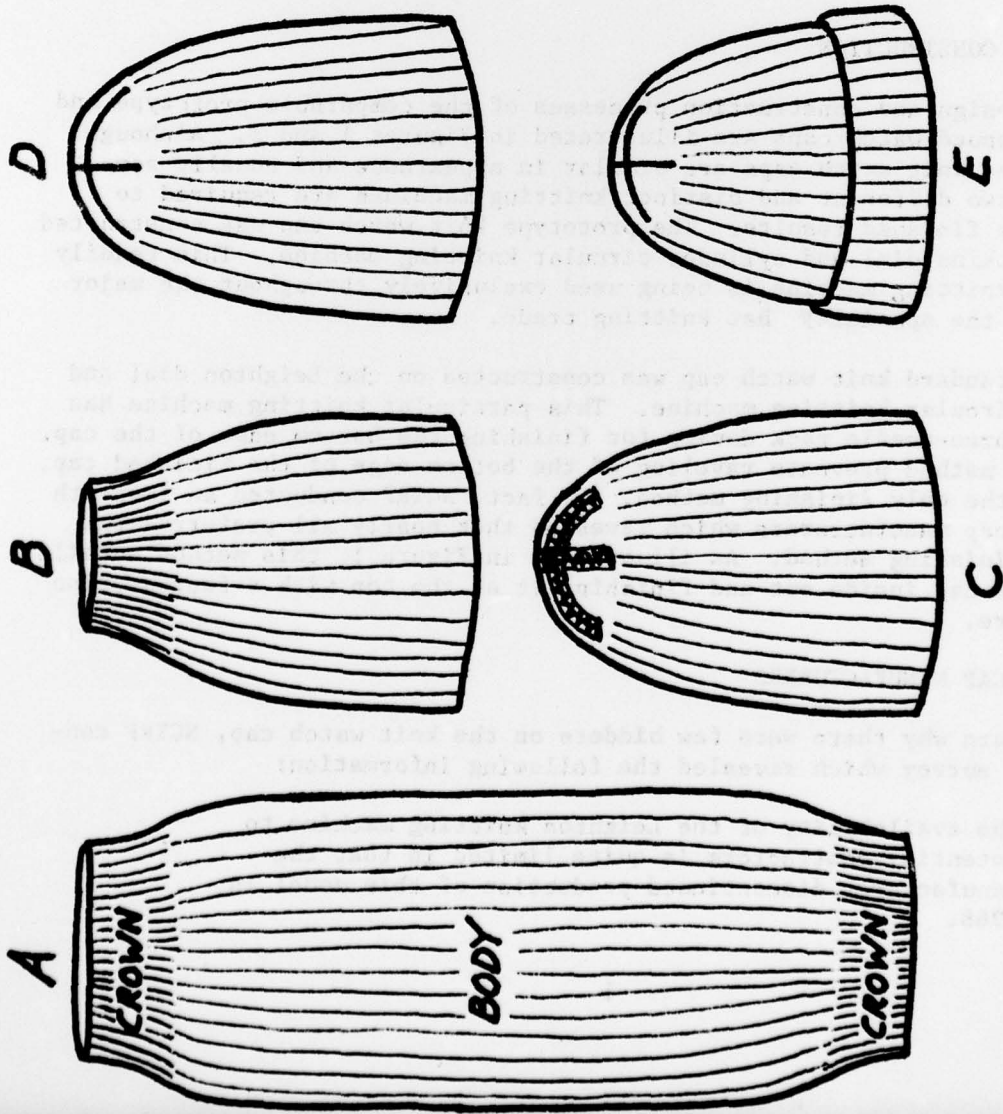
The standard knit watch cap was constructed on the Leighton dial and cylinder circular knitting machine. This particular knitting machine has an added three-needle rack device for finishing the bottom edge of the cap. While this method prevents raveling of the bottom edge of the finished cap, it is not the only finishing method. In fact, NCTRF conducted an in-depth survey of cap manufacturers which revealed that nearly all preferred the Tompkins finishing method. As illustrated in Figure 1, this method entails turning the cap inside out and finishing it at the top with a four-section dart closure.

SURVEY OF CAP MANUFACTURERS

To learn why there were few bidders on the knit watch cap, NCTRF conducted its survey which revealed the following information:

1. The availability of the Leighton knitting machine to potential contractors is quite limited in that the manufacturer discontinued production of this model in 1968.

- LEGEND**
- A - ONE FULL KNITTING REPEAT CROWN - 1X1 RIB STITCH BODY - HALF CARDIGAN STITCH**
 - B - TURNED INSIDE OUT TO SIMULATE A 2 PLY CONSTRUCTION**
 - C - CROWN FORMED WITH A FOUR DART CLOSURE**
 - D. TURNED TO FINISHED POSITION**
 - E. FINISHED CAP AS WORN, BOTTOM EDGE TURNED UP**



**FIGURE 1 - DESIGN AND CONSTRUCTION OF PROTOTYPE
KNIT WATCH CAP**

LEGEND

A- SINGLE PLY CONSTRUCTION

CROWN- 1X1 RIB STITCH

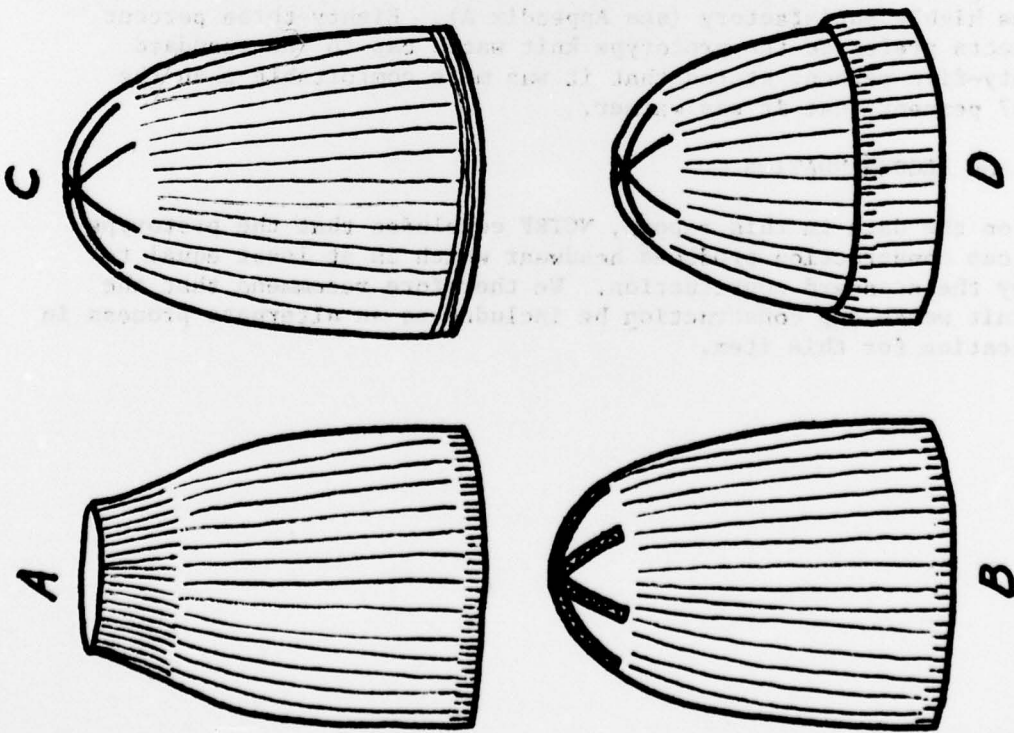
BODY- HALF OR FULL CARDIGAN STITCH

BOTTOM- 1X1 RACK STITCH

**B- CROWN FORMED WITH A SIX DART
CLOSURE**

C- TURNED TO FINISHED POSITION

**D- FINISHED CAP AS WORN,
BOTTOM EDGE TURNED UP**



**FIGURE 2- DESIGN AND CONSTRUCTION OF STANDARD
/ISSUE KNIT WATCH CAP**

2. Even if a cap manufacturer purchased a Leighton machine today, he would pay about three times more for it than for the Tompkins model.
3. Based on the annual procurement of knit watch caps, a significant cost reduction per unit would be realized by the government if the prototype knit watch cap were included in the subject specification.
4. There is also evidence that at least 25 other manufacturers would be interested in bidding on the item if it could be produced on a Tompkins machine.

TEST SITE AND DATA

The wear test evaluation of the prototype knit watch caps was conducted over a 90-day period at the U.S. Naval Facility, Keflavik, Iceland. The evaluation period commenced in October 1976, with the average temperature around 30° F. Each of 40 test subjects was issued one prototype knit watch cap and was requested to wear the item as much as possible throughout the allotted time frame. After the 90-day period, the test subjects were asked to express their personal opinions regarding style, warmth, and comfort as compared with their standard knit watch cap.

Analysis of the limited responses (12) indicated that the participants in general regarded the style, comfort, and warmth characteristics of the test item as highly satisfactory (see Appendix A). Eighty-three percent of the subjects preferred the prototype knit watch cap to the standard cap. Seventy-five percent stated that it was more comfortable than the standard, 67 percent that it was warmer.

CONCLUSION AND RECOMMENDATION

Based on the data in this report, NCTRF concludes that the prototype knit watch cap construction produces headwear which is at least equal to that made by the standard construction. We therefore recommend that the prototype knit watch cap construction be included as an alternate process in the specification for this item.

APPENDIX A. SUMMARY OF FIELD TEST RESULTS.
(responses are shown numerically)

1. Indicate how you liked the experimental knit watch cap as compared to your standard-issued knit watch cap.

Superior	Better	Same	Not as Good	Worse
<u>3</u>	<u>7</u>	<u>0</u>	<u>0</u>	<u>2</u>

2. In comparing the comfort of the experimental knit watch cap to your standard-issued knit watch cap, the experimental knit watch cap is:

Superior	Better	Same	Not as Good	Worse
<u>2</u>	<u>7</u>	<u>1</u>	<u>0</u>	<u>2</u>

3. In comparing the experimental knit watch cap to the standard-issued knit watch cap relative to warmth, the experimental knit watch cap is:

Superior	Better	Same	Not as Good	Worse
<u>4</u>	<u>4</u>	<u>2</u>	<u>0</u>	<u>2</u>

4. List any comments that you have about the experimental knit watch cap you have just tested and the standard-issued knit watch cap you wear. These comments may include suggestions or complaints about the style, comfort, appearance, etc.

The experimental knit watch cap in general was considered better in appearance than the standard-issued knit watch cap.