

AD-A044 352

AIR FORCE ENVIRONMENTAL TECHNICAL APPLICATIONS CENTER--ETC F/G 4/1
EFFECTS ON INFRARED TRANSMISSION, (U)
MAY 77 L D MENDENHALL

UNCLASSIFIED

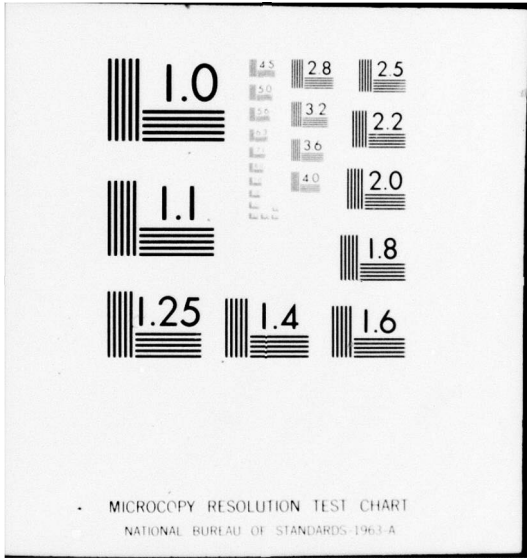
USAFETAC-7584A

NL

1 of 1
ADA044352



END
DATE
FILMED
10-77
DDC



AD-A044352

①

UNITED STATES AIR FORCE
AIR WEATHER SERVICE (MAC)

USAF ENVIRONMENTAL
TECHNICAL APPLICATIONS CENTER
SCOTT AIR FORCE BASE, ILLINOIS 62225

Report 7584A

APPENDIX 3 TO USAFETAC REPORT 7584
Effects on Infrared Transmission

by

DDC
RECEIVED
SEP 16 1977
D

Laurence D. Mendenhall, Capt, USAF

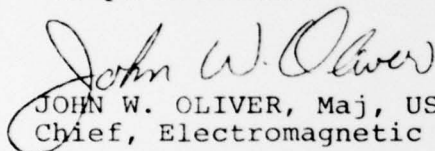
May 1977

Approved for public release; distribution unlimited

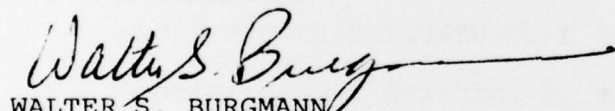
Review and Approval Statement

This report approved for public release. There is no objection to unlimited distribution of this report to the public at large, or by DDC to the National Technical Information Service (NTIS).

This technical report has been reviewed and is approved for publication.


JOHN W. OLIVER, Maj, USAF
Chief, Electromagnetic Propagation Section

FOR THE COMMANDER


WALTER S. BURGMANN
Scientific & Technical Information
Officer (STINFO)

UNCLASSIFIED

SECURITY CLASSIFICATION OF THIS PAGE (When Data Entered)

REPORT DOCUMENTATION PAGE		READ INSTRUCTIONS BEFORE COMPLETING FORM
1. REPORT NUMBER USAFETAC 7584A	2. GOVT ACCESSION NO.	3. RECIPIENT'S CATALOG NUMBER
4. TITLE (and Subtitle) APPENDIX 3 TO USAFETAC REPORT 7584; Effects on Infrared Transmission		5. TYPE OF REPORT & PERIOD COVERED
		6. PERFORMING ORG. REPORT NUMBER
7. AUTHOR(s) Laurence D. Mendenhall, Capt, USAF		8. CONTRACT OR GRANT NUMBER(s)
9. PERFORMING ORGANIZATION NAME AND ADDRESS USAF Environmental Technical Applications Center Scott AFB IL 62225		10. PROGRAM ELEMENT, PROJECT, TASK AREA & WORK UNIT NUMBERS
11. CONTROLLING OFFICE NAME AND ADDRESS USAF Environmental Technical Applications Center SCott AFB IL 62225		12. REPORT DATE May 1977
		13. NUMBER OF PAGES 8
14. MONITORING AGENCY NAME & ADDRESS (if different from Controlling Office)		18. SECURITY CLASS. (of this report) Unclassified
		18a. DECLASSIFICATION/DOWNGRADING SCHEDULE
16. DISTRIBUTION STATEMENT (of this Report) Approved for public release; distribution unlimited.		
17. DISTRIBUTION STATEMENT (of the abstract entered in Block 20, if different from Report)		
18. SUPPLEMENTARY NOTES		
19. KEY WORDS (Continue on reverse side if necessary and identify by block number) Atmospheric transmission Thule, Greenland Infrared absorption Washington, D. C. Water-vapor model		
20. ABSTRACT (Continue on reverse side if necessary and identify by block number) This report presents the results of an analysis of the transmissivity in the 2.95 μm band through the stratosphere and upper troposphere. Comparisons are made between transmissivity calculations from the observed water-vapor profiles and the profiles constructed from three models. These comparisons showed the new model yielded a significant reduction in error in the transmissivity for a slant path from the -40°C temperature level		

DD FORM 1473 EDITION OF 1 NOV 65 IS OBSOLETE

UNCLASSIFIED

iii SECURITY CLASSIFICATION OF THIS PAGE (When Data Entered)

UNCLASSIFIED

SECURITY CLASSIFICATION OF THIS PAGE(When Data Entered)

Block #20 cont'd:
out to space (100 km altitude) from that produced by two old
models.

ACCESSION for		
NTIS	White Section	<input checked="" type="checkbox"/>
DDI	Both Section	<input type="checkbox"/>
UNANNOUNCED		<input type="checkbox"/>
JUSTIFICATION.....		
DT.....		
DISTRIBUTION/AVAILABILITY CODES		
DISL	AVAIL. NO. w/ SPECIAL	
A		

APPENDIX 3 TO USAFETAC REPORT 7584
Effects on Infrared Transmission

Introduction

This appendix to USAFETAC Report 7584[1] presents results of an analysis of the transmissivity in the 2.95 μm band through the stratosphere and upper troposphere. Specifically, the transmissivities were determined for a slant path (zenith angle = 80°) from a height of 100 km to the height of the -40°C temperature level. The analysis was performed on the same 101 NRL frost-point soundings that were used in the development of the water-vapor model as described by Mendenhall, Stanton, and Henderson in USAFETAC Report 7584[1].

Method

The purpose of this analysis was to determine the relationship between total transmissivity, i.e., transmissivity resulting from all absorbers, to the water-vapor equivalent-absorber amount. Such a relationship would permit the calculation of the total transmissivity directly from the water-vapor and temperature profile. The LOWTRAN 3[2] computer program was used to determine this relationship by changing the water-vapor amounts contained in the 1962 U. S. Standard Atmosphere[3], model 6, in the 10 to 20 km region. A total of 12 different water-vapor profiles were made, resulting in 12 values of water-vapor equivalent-absorber amounts. LOWTRAN 3 runs on these 12 profiles for a slant path having a zenith angle of 80° and altitude interval from 100 to 10 km, yielded the corresponding total transmissivities. These results, appearing in Table 1, were then used in a separate program, TOTRAN, to compute the transmissivity in each of the 101 NRL frost-point soundings as well as in these same soundings, but with the observed water-vapor profiles above the -40°C temperature level replaced with the modeled profiles from the new model and the two old models. Calculation of the water-vapor equivalent-absorber amount followed the method employed in LOWTRAN 3[1]

$$w(z) = 0.1 \rho_v(z) \left[\frac{P(z)}{1013} \left(\frac{273}{T(z)} \right)^{\frac{1}{2}} \right]^{0.9} \quad (1)$$

where w is the equivalent absorber amount in $\text{gm}/\text{cm}^2\text{km}$, ρ_v is the absolute humidity in gm/m^3 , P is the pressure in millibars, and T is the temperature in $^\circ\text{K}$. We then calculated the total equivalent absorber amount W along the slant path:

$$W = \sum_{i=1}^{m-1} \frac{\Delta s_i [w(z_i) - w(z_{i+1})]}{\ln[w(z_i)/w(z_{i+1})]} \quad (2)$$

where Δs_i is the path length through the layer, $w(z_i)$ is the water-vapor equivalent absorber amount at each level, and m is the number of levels. Program TOTRAN used logarithmic interpolation of the equivalent-absorber amount and transmissivity data contained in Table 1.

Results

Tables 2 and 3 show the transmissivities and errors in transmissivities for the slant path (zenith angle = 80°) from 100 km to the tropopause and to the $T = -40^\circ\text{C}$ level, respectively, for five of the 101 soundings. The error is computed from the difference between the observed and modeled transmissivity divided by the observed, and multiplied by 100. USAFETAC Report 7584[1] shows a comparison of the frost-point and precipitable-water profiles for these same soundings. Figure 1 shows the relative frequency of the transmissivity for two "old" models and the new model for the 80° slant path from 100 km to the $T = -40^\circ\text{C}$ level. Tables 4 and 5 summarize some of the statistics on errors in transmissivities for the same data. The model currently used, the frost-point depression model, resulted in transmissivity errors of 10 percent or more in about 28 percent of the cases, while the same errors in the new model occurred in only 2 percent of the cases. Eighty percent of the cases showed errors of 5 percent or less using the new model, but only 32 percent of the time did the frost-point depression model exhibit similarly small errors.

References

- [1] Mendenhall, L. D., Stanton, T. E., and Henderson, H. W.: "A Model for Describing the Atmospheric Water-Vapor Profile Above the -40°C Temperature Level," USAFETAC Report 7584, 20 August 1975, 84 p.
- [2] Selby, J. E. A. and McClatchey, R. A.: "Atmospheric Transmittance from $0.25\ \mu\text{m}$ to $28.5\ \mu\text{m}$: Computer Code LOWTRAN 3", AFCRL-TR-0255, 7 May 1975.
- [3] U. S. Standard Atmosphere, 1962, U. S. Government Printing Office, Washington, D. C., 278 p.

Table 1. Total Transmissivity in the $3390\text{-}3720\ \text{cm}^{-1}$ Band as a Function of the Water-Vapor Equivalent-Absorber Amount for a Slant Path with Zenith Angle = 80° from 100 km to 10 km.

Equivalent-Absorber Amount (gram/cm ²)	Total Transmissivity
1.0×10^{-5}	0.4600
2.29	0.4560
7.59	0.4510
2.66×10^{-4}	0.4402
9.87	0.4182
2.36×10^{-3}	0.3947
3.99	0.3753
6.14	0.3570
9.32	0.3364
1.63×10^{-2}	0.3045
2.26	0.2836
3.70	0.2500

Table 2. Model Comparisons of Transmissivities and Errors for Path From 100 km Height to the Tropopause Level for Zenith Angle = 80° .

Location	Date/Time	Observed	<u>Transmissivities</u>		New Model
			<u>Mixing-Ratio Model</u>	<u>Frost-Point Dep Model</u>	
Thule, Greenland	22 Aug 65 1925Z	0.395	0.381 -3.7	0.405 2.4	0.402 1.5
Washington, DC	16 Jan 64 1800Z	0.423	0.409 -3.3	0.417 -1.4	0.418 -1.0
Washington, DC	25 Aug 64 1730Z	0.437	0.449 2.6	0.449 2.6	0.445 1.8
Washington, DC	29 Nov 67 1610Z	0.422	0.419 -0.60	0.424 0.57	0.424 0.58
Washington, DC	19 Dec 67 1700Z	0.444	0.449 1.08	0.449 1.08	0.446 0.28

Note: Transmissivities in the table were rounded, but they were not rounded for error calculations.

Table 3. Model Comparisons of Transmissivities and Errors for Path From 100 km Height to the T = -40°C Level for Zenith Angle = 80°.

Location	Date/Time	Observed	Transmissivities		New Model
			Mixing-Ratio Model	Frost-Point Dep Model	
Thule, Greenland	22 Aug 65 1925Z	0.253	0.251 -0.94	0.283 11.6	0.266 5.2
Washington, DC	16 Jan 64 1800Z	0.289	0.309 3.8	0.317 9.6	0.307 6.3
Washington, DC	25 Aug 64 1730Z	0.346	0.339 -2.0	0.343 -0.76	0.345 -0.25
Washington, DC	29 Nov 67 1610Z	0.285	0.309 8.4	0.328 14.9	0.315 10.4
Washington, DC	19 Dec 67 1700Z	0.319	0.328 2.5	0.332 4.0	0.330 3.3

Note: Transmissivities in the table were rounded, but they were not rounded for error calculations.

Table 4. Model Comparisons of Statistics of Error in Transmissivity from 100 km to the T = -40°C Level for Zenith Angle = 80°.

101 NRL Soundings 1964 - 1973

Error (percent)	Mixing-Ratio Model	Frost-Point Dep Model	New Model
Mean	2.4	7.2	0.9
Standard Deviation	5.1	4.9	4.4
Minimum	-10.5	-6.3	-12.1
Maximum	13.5	18.4	19.9

Table 5. Model Comparisons of Absolute Value of Error in Transmissivity from 100 km to the T = -40°C Level for Zenith Angle = 80°.

101 NRL Soundings 1964 - 1973

Absolute Error	Frequency (percent)		
	Mixing-Ratio Model	Frost-Point Dep Model	New Model
0 to ± 5%	64.35	28.71	77.23
± 5% to ±10%	27.73	41.59	14.80
±10% to ±15%	7.92	23.76	1.98
±15% to ±20%	0.00	5.94	0.99
TOTAL	100.00	100.00	100.00

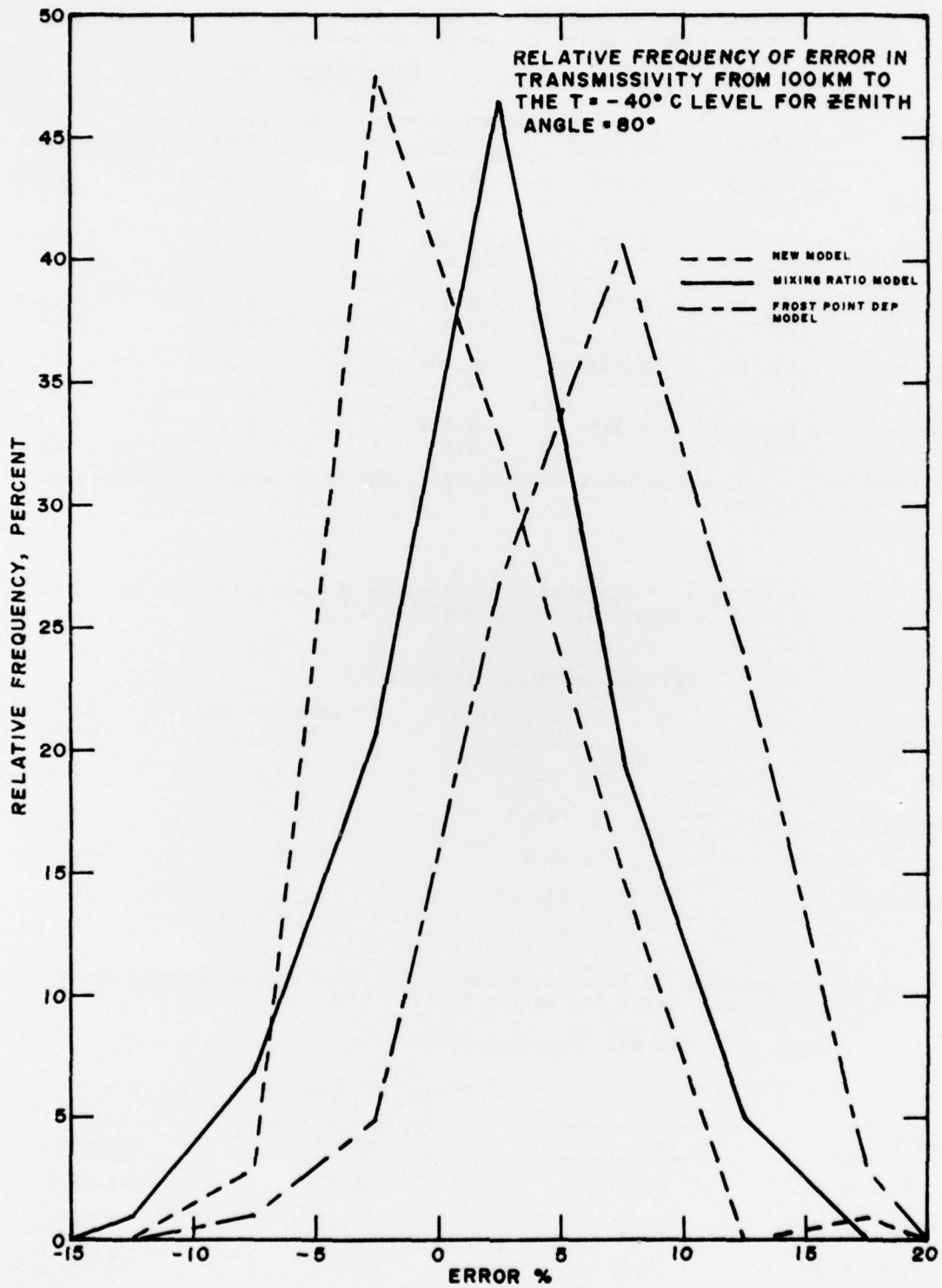


Figure 1. Relative Frequency of Error in Transmissivity from 100 km to the T=-40°C Level for Zenith Angle = 80°.