

AD-A044 722

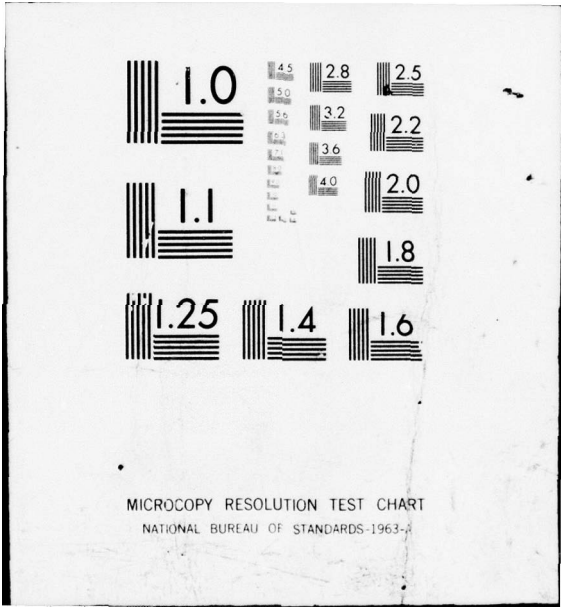
MASSACHUSETTS INST OF TECH CAMBRIDGE ELECTRONIC SYST--ETC F/G 12/1
EXACT SOLUTION TO LYAPUNOV'S EQUATION USING ALGEBRAIC METHODS. (U)
FEB 77 T E DJAFERIS N00014-75-C-0661
ESL-R-725 NL

UNCLASSIFIED

| OF |
AD
A044 722



END
DATE
FILMED
10-77
DDC

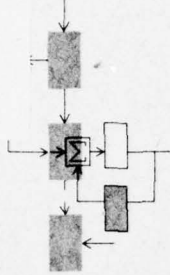


ADA 044722

February, 1977

Report ESL-R-725

Contract ERDA-E(49-18)-2087



EXACT SOLUTION TO LYAPUNOV'S EQUATION USING ALGEBRAIC METHODS

Theodore Euclid Djaferis

Code 437
NR. 049-189

Contract No. N00014-75-C-0661

DDC
RECEIVED
SEP 28 1977
RECEIVED

[Signature]
A

AD No. _____
DDC FILE COPY

DISTRIBUTION STATEMENT A
Approved for public release;
Distribution Unlimited

Electronic Systems Laboratory

MASSACHUSETTS INSTITUTE OF TECHNOLOGY, CAMBRIDGE, MASSACHUSETTS 02139

Department of Electrical Engineering and Computer Science

11 Feb 1977

12 77p.

14 Report ESL-R-725

6 EXACT SOLUTION TO LYAPUNOV'S EQUATION
USING ALGEBRAIC METHODS

by
10 Theodore Euclid/Djaferis

9 Master's thesis,

This report is based on the unaltered thesis of Theodore E. Djaferis, submitted in partial fulfillment of the degree of Master of Science at the Massachusetts Institute of Technology in January 1977. The research has been supported by ERDA under Grant ERDA-E(49-18)-2087. The computational work was done using the computer system MACSYMA developed by the Math Lab group at M.I.T. The Math Lab group is supported by the Defence Advanced Research Projects Agency, work order 2095, under Office of Naval Research Contract No. N00014-75-C-0661, E(49-18)-2087

15

Electronic Systems Laboratory
Department of Electrical Engineering and Computer Science
Massachusetts Institute of Technology
Cambridge, Massachusetts 02139

127 200

ACCESSION BY	
NTIS	White Section <input checked="" type="checkbox"/>
DDC	Butt Section <input type="checkbox"/>
UNANNOUNCED	<input type="checkbox"/>
JUSTIFIED	<input type="checkbox"/>
BY <i>Butt on file</i>	
DISTRIBUTION AVAILABILITY CODES	
Dist.	AVAIL. AND SPECIAL
A	

EXACT SOLUTION TO LYAPUNOV'S EQUATION
USING ALGEBRAIC METHODS

by

THEODORE EUCLID DJAFERIS

Submitted to the Department of Electrical Engineering and
Computer Science on January 4, 1977, in partial fulfillment
of the degree of Master of Science at the Massachusetts
Institute of Technology.

ABSTRACT

Being able to obtain the solution to the Lyapunov Equation
is very important in many areas of Control Theory. By applying
the usual methods of solution only an approximate solution can
be obtained. In this thesis we present algorithms for obtaining
the exact solution to Lyapunov's Equation, using Algebraic
Methods.

THESIS SUPERVISOR: Sanjoy K. Mitter

TITLE: Professor of Electrical Engineering and Computer Science

EXACT SOLUTION TO LYAPUNOV'S EQUATION
USING ALGEBRAIC METHODS

by

THEODORE EUCLID DJAFERIS

B.S., UNIVERSITY OF MASSACHUSETTS
1974

SUBMITTED IN PARTIAL FULFILLMENT OF THE
REQUIREMENTS FOR THE DEGREE OF
MASTER OF SCIENCE

at the

MASSACHUSETTS INSTITUTE OF TECHNOLOGY
January 4, 1977

Signature of Author *Theodore Djaferis*
Department of Electrical Engineering and Computer Science
January 4, 1977

Certified by *Smith* Thesis Supervisor

Accepted by
Chairman, Departmental Committee on Graduate Students

ACKNOWLEDGEMENT

The author greatly appreciates the continuing guidance, stimulation and encouragement provided by Professor S.K. Mitter whose supervision was vital to the successful completion of the thesis research.

Thanks are also due to Professor N. R. Sandell for providing meaningful examples for numerical solution as well as other beneficial comments.

The author also wishes to thank Professor J. Moses for making it possible to use the outstanding computing facilities offered by MACSYMA as well as for many enlightening discussions.

Finally, I wish to also thank my parents, and my fiancée Mary Metallides for their continued prayers.

The research has been supported by ERDA under Grant ERDA-E(49-18)--2087. The computational work was done using the computer system MACSYMA developed by the Math Lab group at M.I.T.. The Math Lab group is supported by the Defence Advanced Research Projects Agency, work order 2095, under Office of Naval Research Contract No. N00014-75-C-0661.

TABLE OF CONTENTS

	PAGE
ABSTRACT	2
ACKNOWLEDGEMENT	3
TABLE OF CONTENTS	4
CHAPTER 1 Introduction	6
1.1 General Remarks	6
1.2 Importance of Equation	6
1.3 Methods of Solution	8
1.4 Summary of Thesis	9
CHAPTER 2 Algebraic Structure	10
2.1 Introduction	10
2.2 Four Lemmata from the Theory of Polynomials and Matrices	10
2.3 Defining the Action f_{Λ}	13
2.4 Algebraic proofs of two Theorems Related to a Linear Matrix System	17
CHAPTER 3 Computational Algorithms	26
3.1 Introduction	26
3.2 The Rational Algorithm	27
3.3 The Integer Algorithm	27
3.4 The Modular Algorithm	30
CHAPTER 4 Computer Programs and Numerical Results	34
4.1 Introduction	34
4.2 The Function SLEAMR	35
4.3 The Function SLEAMI	37

	PAGE
4.4 The Function SLEAMM	39
4.5 A Numerical Example	42
4.6 The Parametric Case	45
CHAPTER 5 Generalizations and Extensions	48
5.1 The Matrix Equation $PA + BP = -C$	48
5.2 Conclusions	55
APPENDIX	57
REFERENCES	75

Chapter 1
Intruduction

1.1 General Remarks

In recent years there has been impressive progress in the theoretical understanding of the structure, representation and control of linear multivariable systems. In contrast, workers in the field have paid very little attention to the computational aspects of systems problems. This does not mean that algorithms for the solution of systems problems have not been developed. But most of the algorithms that have been proposed have never been seriously studied as far as stability, convergence and similar issues are concerned.

In this thesis we undertake a study of solution methods for Lyapunov's equation

$$PA + A'P = -Q \quad (1.1)$$

using the methods of modern algebra. The emphasis is on the use of finite algebraic procedures which are easily implemented on a digital computer and which lead to an explicit solution to the problem.

1.2 Importance of Equation

It is well known that this is an important equation in the study of stability of linear finite dimensional time-invariant systems. If Q is symmetric and positive definite and if A is a stability matrix (real parts of eigen-values of A strictly negative) then the unique positive definite solution to (1.1) is given by the convergent integral.

$$P = \int_0^{\infty} e^{A't} \cdot Q \cdot e^{At} dt. \quad (1.2)$$

[4]

In Optimal Control it is frequently desired to evaluate quadratic integrals of the form

$$J = \int_0^{\infty} x'(t) \cdot Q \cdot x(t) dt \quad (1.3)$$

under the constraint that $x(t)$ satisfies

$$\dot{x}(t) = Ax(t) \quad x(0) = c$$

If P is the solution of equation (1.1) we have that

$$J = c' \cdot P \cdot c. \quad (1.4)$$

Stochastic control is another area of importance in the evaluation of covariance matrices in filtering and estimation for continuous systems.

The need for solving this equation also arises when one uses Newton's Method to solve the Algebraic Riccati equation

$$PA + A'P + c'c - PBR^{-1}B'P = 0 \quad (1.5)$$

where R is positive definite.

If (A,B) is a controllable pair and (A,C) an observable pair then there exists a unique positive definite solution P to (1.5).

In [10] it is shown that if $P_k, k=0, 1, 2, \dots$ is the unique positive definite solution of the linear algebraic matrix equation

$$A_k' P_k + P_k A_k + c'c + L_k' R L_k = 0 \quad (1.6)$$

where recursively,

$$L_k = R^{-1}B'P_{k-1} \quad k = 1, 2, \dots$$
$$A_k = A - BL_k$$

where L_0 is chosen such that the matrix $A_0 = A - BL_0$ is a stability matrix then

- i) $P \leq P_{k+1} \leq P_k \leq \dots \quad k = 0, 1, 2, \dots$
- ii) $\lim_{k \rightarrow \infty} P_k = P$

Equation (1.6) with $k = 0, 1, 2, \dots$ is a Lyapunov equation.

1.3 Methods of Solution

The Lyapunov equation has many areas of application and therefore a great deal of effort has been put in both the theoretical as well as its computational aspects. There have been devised several methods of solution which can broadly be characterized as either Direct, Transformation or Numerical. An exposition accompanied by error analysis of several such methods is contained in [1, 2].

The basic drawback with such methods is the fact that the solution obtained is an approximate one. This becomes frustrating when the problem is ill-conditioned. Furthermore if a Riccati equation is to be solved which requires the solution of several Lyapunov equations the matter becomes even more complicated. Not only is the solution an approximate one but nothing is said about the accuracy of the approximation.

The need for improvement is quite evident and in certain cases demanded. In this thesis we have developed new algorithms for obtaining the exact solution of the Lyapunov equation.

1.4 Summary of Thesis

Let $A'P + PA = -Q$ be a Lyapunov equation with A being a stability matrix and both A and Q n dimensional matrices with real entries. Let $R[x,y]$ be the ring of polynomials in x and y over the reals R , and M be the set of all $n \times n$ square matrices over the reals. The solution P of this equation is given by

$$P = f_A(q(x,y), Q)$$

where $q(x,y)$ in $R[x,y]$

and $f_A: R[x,y] \times M \rightarrow M$ defined as

$$f_A(h(x,y), M) = \sum_{j,k} h_{jk} (A')^j \cdot M \cdot (A)^k$$

This method is based on an important paper by KALMAN [9]. Kalman's concern was the characterization of polynomials whose zeros lie in certain algebraic domains (and the unification of the ideas of Hermite and Lyapunov). In this thesis we clarify and complete some ideas contained in the paper and extend the results by showing that the same ideas lead to finite algorithms for the solution of Linear Matrix Equations.

The thesis is divided into four chapters. In chapter 2 we introduce the algebraic structure in which we will be working and provide proofs of several theorems related to a linear matrix equation. This chapter provides the basis for chapter 3 where the computational algorithms are presented. In chapter 4 we list the computer programs used in implementing the algorithms and present several numerical examples. In chapter 5 we present some generalizations and extensions.

Chapter 2

Algebraic Structure

2.1 Introduction

This chapter provides the theoretical basis on which our method for solving the Lyapunov Equation lies.

There are two main themes. The first one is the association of a unique matrix with every polynomial in $R[x,y]$ and the notion of a positive polynomial. Lemmata (2.1), (2.2), (2.3) and part (iii) of Lemma (2.4) refer to this idea. The above four Lemmata are stated in section (2.2) but their proof is presented in Appendix A.

The second theme is that of the action f_A which is examined in section (2.3).

The above two themes are used in proving the two theorems in section (2.4), which are related to the Lyapunov Equation.

2.2 Four Lemmata from the Theory of Matrices and Polynomials

Let R be the field of real numbers $R[x]$ the ring of polynomials in x over R and $R[x,y]$ the ring of polynomials in x and y over R . The elements of $R[x]$ are denoted as $p(x)$ and the elements of $R[x,y]$ as $h(x,y)$. $R[x]$ is a subring of $R[x,y]$.

Suppose that $p(x,y)$ is in $R[x,y]$ and $l(z)$ is the column vector

$$l(z) = \begin{bmatrix} 1 \\ z \\ \cdot \\ \cdot \\ \cdot \\ z^{n-1} \end{bmatrix}$$

where n is one plus the largest power of $p(x,y)$, in either x or y .

Then we can write

$$p(x,y) = l'(y) \cdot C(p) \cdot l(x)$$

for some unique $n \times n$ matrix $C(p) = (a_{ij})$. (The element a_{ij} is the coefficient of the term $x^{j-1} \cdot y^{i-1}$ in $p(x,y)$). If n is allowed to take a value larger than the one defined above for any particular $p(x,y)$ the uniqueness of $C(p)$ is lost.

We therefore can associate a unique matrix $C(p)$ with any polynomial $p(x,y)$. The reason behind this association is the intent of assigning polynomials to value classes.

Definition 2.1. A polynomial $p(x,y)$ in $R[x,y]$ is positive if and only if $C(p)$ is (i) symmetric and (ii) positive definite.

Let Φ denote the ideal $(\phi(x), \phi(y))$ in $R[x,y]$.

$$\Phi = \left\{ g(x,y) \mid g(x,y) = a(x,y)\phi(x) + b(x,y)\phi(y) \text{ for any } \begin{matrix} a(x,y), b(x,y) \\ \text{in } R[x,y] \end{matrix} \right\}$$

Let $R[x,y]/\Phi$ denote the associated quotient ring. The elements of $R[x,y]/\Phi$ will be thought of as cosets or as equivalence classes (whichever is more advantageous at a given situation) denoted as $\Phi + p(x,y)$ or $[p(x,y)]$ respectively. We shall denote by $p(x,y) \bmod \Phi$ the polynomial of minimal degree in the equivalence class $[p(x,y)]$.

Let $R_m(x)$ denote the vector space over R of all polynomials of degree less than m in $R[x]$.

Lemma 2.1 . Let $p(x,y)$ be a polynomial in $R[x,y]$ with $C(p)$ being an $m \times m$ matrix . Then $p(x,y)$ is positive if and only if there exist polynomials $\pi_1(x), \dots, \pi_m(x)$ such that

$$p(x,y) = \sum_{i=1}^m \pi_i(x) \pi_i(y)$$

where $\{\pi_i(x)\}$ are a basis for $R_m(x)$ ¹.

Definition 2.2. Two polynomials $a(x)$, $b(x)$ in $R[x]$ are called relatively prime if there exist polynomials $T_u(x)$ and $\lambda_u(x)$ such that $T_u(x)a(x) + \lambda_u(x)b(x) = u$ where u is a unit in $R[x]$.

Lemma 2.2. Let n be the degree of $\phi(x)$. If $p(x,y) \bmod \phi$ is positive of degree $n-1$ in both x and y then $(\sigma(x)\sigma(y)p(x,y)) \bmod \phi$ is positive of degree $n-1$ in x and y , if and only if $\sigma(x)$ and $\phi(x)$ are relatively prime.

Lemma 2.3. Let $\lambda_1, \lambda_2, \dots, \lambda_n$ be complex numbers which are distinct and have positive real parts. Then the $n \times n$ matrix $\Lambda_n = \left(\frac{1}{\lambda_i + \lambda_j} \right)$ is hermitean ($\Lambda_n = \Lambda_n^*$ where $(*)$ the hermitean adjoint) positive definite.

Definition 2.3. A polynomial $g(x,y)$ is called symmetric if $C(g)$ is a symmetric matrix.

A polynomial $g(x,y)$ is symmetric if $g^+(x,y) = g(x,y)$ where $g^+(x,y)$ is that polynomial obtained from $g(x,y)$ by interchanging x and y .

¹Lemmata 2.1, 2.2 and 2.3 correspond to Lemmata 2, 3 and Main Lemma in [9] respectively, 2.1 and 2.3 being the same, with the idea of 3 being borrowed from KALMAN [9], to arrive at the statement of Lemma 2.2. Lemma 2.4 captures the essential idea of the Theorem in [9]. In Kalman's paper only sketches of proofs are given. Here we provide complete proofs.

Lemma 2.4. Let A be an $n \times n$ stability matrix with

$\varphi_2(x) = \det(Ix - A)$ and let $\Phi = (\varphi_2(x), \varphi_2(y))$. Define

$$\varphi_1(x) = \varphi_2(-x) \quad (2.1)$$

$$P_\varphi(x, y) = \frac{\varphi_2(x) \cdot \varphi_2(y) - \varphi_1(x) \varphi_1(y)}{x + y} \quad (2.2)$$

i) Polynomials $\varphi_1(x), \varphi_2(x)$ are relatively prime. That is there exist $T_u(x), \lambda_u(x)$ in $R[x, y]$ such that

$$T_u(x) \varphi_1(x) + \lambda_u(x) \varphi_2(x) = u \quad (2.3)$$

where u is a unit in $R[x, y]$.

ii) $P_\varphi(x, y)$ is an element of $R[x, y]$

iii) Let $q_u(x, y) = T_u(x) T_u(y) P_\varphi(x, y) \text{ mod } \Phi \quad (2.4)$

Then $q_u(x, y)$ is positive of degree $n-1$ in both x and y .

2.3 Defining the action f_A

Let A be some $n \times n$ matrix over R with $\varphi(x) = \det(Ix - A)$ being its characteristic polynomial. Let M be the set of all $n \times n$ matrices over R .

We define the action $f_A: R[x, y] \times M \rightarrow M$ in the following manner.

$$f_A(h(x, y), M) = \sum_{j, k} h_{jk}(A')^j \cdot M \cdot (A)^k \quad (2.6)$$

These are some properties of this map.

- i) $f_A(u, M) = uM$ (u a unit in $R[x, y]$)
- ii) $f_A(g(x, y) + h(x, y), M) = f_A(g(x, y), M) + f_A(h(x, y), M)$
- iii) $f_A(g(x, y)q(x, y), M) = f_A(g(x, y), f_A(q(x, y), M))$
 $= f_A(q(x, y), f_A(g(x, y), M))$

$$\text{iv) } f_A(h(x,y), M) = f_A(h \text{ mod } \Phi, M)$$

$$\text{v) } f_A(h(x,y), M_1+M_2) = f_A(h(x,y), M_1) + f_A(h(x,y), M_2)$$

Property i) follows directly from the definition.

Property ii) is shown as follows:

$$\text{Let } p(x,y) = g(x,y) + h(x,y)$$

$$p_{ij} = g_{ij} + h_{ij}$$

$$\begin{aligned} f_A(p(x,y), M) &= \sum_{ij} p_{ij} (A')^i \cdot M \cdot (A)^j \\ &= \sum_{ij} (g_{ij} + h_{ij}) ((A')^i \cdot M \cdot (A)^j) \\ &= \sum_{ij} g_{ij} (A')^i \cdot M \cdot (A)^j \\ &\quad + \sum_{ij} h_{ij} (A')^i \cdot M \cdot (A)^j \\ &= f_A(g(x,y), M) + f_A(h(x,y), M) \end{aligned}$$

Property iii) is shown as follows:

$$\text{Let } p(x,y) = g(x,y)q(x,y)$$

$$p_{jk} = \sum_{\substack{i+l=j \\ h+m=k}} g_{ih} q_{lm}$$

$$\begin{aligned} f_A(p(x,y), M) &= \sum_{jk} p_{jk} (A')^j \cdot M \cdot (A)^k \\ &= \sum_{jk} \left(\sum_{\substack{i+l=j \\ h+m=k}} g_{ih} q_{lm} \right) (A')^j \cdot M \cdot (A)^k \\ f_A(g(x,y), M) &= \sum_{jk} g_{ih} (A')^i \cdot M \cdot (A)^h \end{aligned}$$

$$f_A(q(x,y), M) = \sum_{lm} q_{lm} (A')^{l \cdot M} \cdot (A)^m$$

Now

$$f_A(g(x,y), f_A(q(x,y), M)) = \sum_{ih} g_{ih} (A')^i \left(\sum_{lm} q_{lm} (A')^{l \cdot M} \cdot (A)^m \right) \cdot (A)^h$$

$$= \sum_{ih} \left(\sum_{lm} q_{ih} q_{lm} (A')^{i+l \cdot M} \cdot (A)^{m+h} \right)$$

suppose that we write this sum differently

$$\text{let } j = i+1 \quad k = m+h$$

Then

$$f_A(g(x,y), f_A(q(x,y), M)) = \sum_{jk} \left(\sum_{\substack{i+1=j \\ h+m=k}} g_{ih} q_{lm} (A')^{j \cdot M} \cdot (A)^k \right)$$

$$= f_A(p(x,y), M)$$

$$\text{similarly } f_A(p(x,y), M) = f_A(q(x,y), f_A(g(x,y), M))$$

Property iv) is shown as follows:

$$\text{Let } h(x,y) = h_1(x,y)\phi(x) + h_2(x,y)\phi(y) + r(x,y)$$

This is obtained by first dividing $h(x,y)$ by $\phi(x)$ and following that dividing the remainder by $\phi(y)$. This means that the degree of $r(x,y)$ in both x and y is less than n . This decomposition of $h(x,y)$ is unique, and we also have that

$$r(x,y) = h \text{ mod } \Phi$$

$$f_A(h(x,y), M) = f_A(h_1(x,y)\phi(x) + h_2(x,y)\phi(y) + r(x,y), M)$$

$$= f_A(h_1(x,y), f_A(\phi(x), M)) + f_A(h_2(x,y), f_A(\phi(y), M))$$

$$+ f_A(r(x,y), M)$$

$$f_A(\phi(x), M) = M \cdot \phi(A) = 0$$

$$f_A(\phi(y), M) = \phi(A') \cdot M = 0$$

by the Cayley-Hamilton Theorem.

Therefore

$$f_A(h(x,y), M) = f_A(h \text{ mod } \Phi, M)$$

Property v) is shown as follows:

$$\begin{aligned} f_A(h(x,y), M_1+M_2) &= \sum_{ij} h_{ij} (A')^i (M_1+M_2)^j A^j \\ &= \sum_{ij} h_{ij} (A')^i M_1^j + h_{ij} (A')^i M_2^j \\ &= f_A(h(x,y), M_1) + f_A(h(x,y), M_2) \end{aligned}$$

The definition of f_A paves the way for the construction of a particular module. Define the product (*) between cosets $\Phi + h(x,y)$ and nxn matrices M by:

$$(\Phi + h(x,y)) * M = \sum_{ij} h_{ij} (A')^i M A^j$$

with the outcome in M .

Property iv) ensures that the product is well defined since it does not matter which element in $\Phi + h(x,y)$ we use.

Square nxn matrices under addition form an abelian group.

Property v) makes certain that

$$\Phi + h(x,y) * (A+B) = (\Phi + h(x,y)) * A + (\Phi + h(x,y)) * B.$$

Property iii) ensures that

$$(\Phi + h(x,y)) * [(\Phi + g(x,y)) * M] = [(\Phi + h(x,y)) (\Phi + g(x,y))] * M.$$

And property ii) ensures that

$$[(\Phi + h(x,y)) + (\Phi + g(x,y))] * M = (\Phi + h(x,y)) * M + (\Phi + g(x,y)) * M.$$

The ring $R[x,y]/\Phi$ has a unit element $\Phi + 1$ and we have from property i) that

$$(\Phi + 1) * M = M.$$

The above can be summarized in

Lemma 2.5. The set M of square $n \times n$ matrices is a module over the quotient ring $R[x,y]/\Phi$.

Even though Lemma 2.5 will not be explicitly called upon in any of the subsequent proofs it none the less gives great insight in what is essentially taking place and the rationale behind this method of approach to the solution of

$$PA + A'P = -Q.$$

The matrix P is operated on by the matrix A . This can be expressed as

$$(\Phi + (x+y)) * P = PA + A'P = -Q.$$

Suppose that a multiplicative inverse of element $\Phi+(x+y)$ is found in $R[x,y]/\Phi$ denoted by $\Phi+(x+y)^{-1}$ such that

$$(\Phi + (x+y)) \cdot (\Phi + (x+y)^{-1}) = \Phi+1$$

We would then have the following:

$$(\Phi+(x+y)^{-1}) * [\Phi + (x+y) * P] = (\Phi+(x+y)^{-1}) * (-Q)$$

Because of the properties mentioned above this can be written as

$$[(\Phi+(x+y)^{-1}) \cdot (\Phi+(x+y))] * P = (\Phi+(x+y)^{-1}) * (-Q)$$

and therefore

$$P = (\Phi+(x+y)^{-1}) * Q.$$

2.4 Algebraic proofs of two theorems related to a Linear Matrix System.

We now have all the necessary algebraic construction to prove the following two theorems.

Theorem 2.1. Let A be an $n \times n$ square matrix over the reals.

A is a stability matrix if and only if for any symmetric positive definite matrix Q there exists a unique symmetric positive

definite solution P to the matrix equation

$$PA + A'P = -Q \quad (2.7)$$

Theorem 2.2. Let A be an nxn square matrix over the reals.

If A is a stability matrix and (A,C) is an observable pair then the matrix equation

$$PA + A'P = -C'C \quad (C \text{ is } p \times n) \quad (2.8)$$

has a unique symmetric positive definite solution P.

Proof of Theorem 2.1. Suppose that A is an nxn stability matrix. We claim that for any Q_1

$$P = \frac{1}{u^2} \cdot f_A(q_u(x,y), Q_1)$$

is the unique solution of $PA + A'P = -Q_1$, where f_A is defined as in (2.6) and $q_u(x,y)$ as in (2.4). Using the properties of action f_A we have

$$\begin{aligned} PA + A'P &= \frac{1}{u^2} \cdot (f_A(q_u(x,y), Q_1) \cdot A + A' \cdot f_A(q_u(x,y), Q_1)) \\ &= \frac{1}{u^2} \cdot (f_A(x, f_A(q_u(x,y), Q_1)) \\ &\quad + f_A(y, f_A(q_u(x,y), Q_1))) \\ &= \frac{1}{u^2} \cdot (f_A((x+y), f_A(q_u(x,y), Q_1))) \\ &= \frac{1}{u^2} \cdot (f_A((x+y)q_u(x,y), Q_1)) \\ &= \frac{1}{u^2} \cdot (f_A((x+y)q_u(x,y) \bmod \Phi, Q_1)) \\ &= \frac{1}{u^2} \cdot (-u^2 \cdot Q_1) = -Q_1 \end{aligned}$$

Uniqueness follows by observing that the linear operator $L: \mathbb{R}^{n^2} \rightarrow \mathbb{R}^{n^2}$ defined by

$$L(P) = PA + A'P$$

is onto since no restriction was placed on Q_1 . This implies that L is one-one.

We now show that P is positive definite.

Since $q_u(x,y)$ is positive (Lemma 2.4) this implies that (Lemma 2.1) there exist polynomials $\{\pi_i(x)\}$ such that

$$q_u(x,y) = \sum_{i=1}^n \pi_i(x) \pi_i(y)$$

where $\{\pi_i(x)\}$ is a basis for $R_n(x)$.

Therefore

$$\begin{aligned} P &= \frac{1}{u^2} f_A(q_u(x,y), Q) \\ &= \frac{1}{u^2} f_A\left(\sum_{i=1}^n \pi_i(x) \pi_i(y), Q\right) \\ &= \frac{1}{u^2} \sum_{i=1}^n \pi_i(A') \cdot Q \cdot \pi_i(A) \end{aligned}$$

Since Q is symmetric from the uniqueness of the solution P we also have P being symmetric. Since $Q > 0$ we have from the last expression that P is at least positive semi-definite.

Suppose therefore, that there exists an n -vector $z \neq 0$ such that $z'Pz=0$. this implies that $\pi_i(A) \cdot z=0$ for all $1 \leq i \leq n$. The polynomials $\{\pi_i(x)\}$ form a basis for $R_n(x)$. Therefore there exist constants k_1, k_2, \dots, k_n such that

$$\begin{aligned} \sum_{i=1}^n k_i \pi_i(x) &= 1 \\ \Rightarrow f_A\left(\sum_{i=1}^n k_i \pi_i(x), I\right) &= I \quad (I \text{ nxn identity matrix}) \\ \Rightarrow \sum_{i=1}^n k_i \pi_i(A) &= I \end{aligned}$$

$$\Rightarrow \sum_{i=1}^n k_i \pi_i(A) \cdot z = I \cdot z$$

Since $\pi_i(A) = 0$ for all i , the left hand side of the above equality is zero. This is a contradiction since I is positive definite. Therefore P is positive definite.

Suppose now that for any symmetric positive definite matrix Q there exists a symmetric positive definite solution P of (2.8).

Let z be some eigenvector corresponding to the eigenvalue λ .

$$- \bar{z}' \cdot Q \cdot z < 0 \quad (\bar{z} \text{ denotes complex conjugate})$$

$$\Rightarrow \bar{z}' (PA + A'P)z < 0$$

$$\Rightarrow \bar{z}' P(\lambda z) + (\bar{\lambda} \bar{z}') Pz < 0$$

$$\Rightarrow (\lambda + \bar{\lambda}) \bar{z}' Pz < 0$$

Since $P > 0$ this implies that $\lambda + \bar{\lambda} < 0$ (ie that $\text{Re}(\lambda) < 0$). Therefore A is a stability matrix. This completes the proof of Theorem 2.1.

Proof of Theorem 2.2.

Suppose that A is an $n \times n$ stability matrix. Using Lemma 2.4 this implies that

$$q_u(x, y) = T_u(x) T_u(y) P \phi(x, y) \text{ mod } \Phi$$

is positive. By Lemma 2.1 $q_u(x, y)$ can be written as:

$$q_u(x, y) = \sum_{i=1}^n \pi_i(x) \pi_i(y)$$

with $\{\pi_i(x)\}$ being a basis for $R_n(x)$. In a way similar to the proof of theorem 2.1 the solution P of (2.8) exists and can be written as :

$$\begin{aligned}
 P &= \frac{1}{u^2} f_A(q_u(x,y), C'C) \\
 &= \frac{1}{u^2} \sum_{i=1}^n \pi_i(A') C'C \pi_i(A).
 \end{aligned}$$

Since $C'C \geq 0$ we have that for any n -vector z and $1 \leq i \leq n$

$$z' \cdot \pi_i(A') C'C \pi_i(A) z = \left\| C \pi_i(A) z \right\|^2 \geq 0$$

where $\|z\| = \left(\sum_{i=1}^n z_i^2 \right)^{1/2}$. This means that $P \geq 0$.

Suppose then that there exists $z \neq 0$ such that $z' \cdot P \cdot z = 0$.

This implies that

$$\begin{aligned}
 \left\| C \pi_i(A) z \right\|^2 &= 0 \quad \text{for } 1 \leq i \leq n \\
 \Rightarrow C \pi_i(A) z &= 0 \quad \text{for } 1 \leq i \leq n
 \end{aligned}$$

Since $\{\pi_i(x)\}$ are a basis for $R_n(x)$ there exists an $n \times n$ matrix K such that:

$$K \cdot \begin{bmatrix} \pi_1(x) \\ \pi_2(x) \\ \vdots \\ \pi_n(x) \end{bmatrix} = \begin{bmatrix} 1 \\ x \\ \cdot \\ \cdot \\ x^{n-1} \end{bmatrix}$$

which is shorthand notation for the n equations

$$\begin{aligned}
 k_{i1}\pi_1(x) + k_{i2}\pi_2(x) + \dots + k_{in}\pi_n(x) &= x^{i-1} \\
 \text{for } 1 \leq i \leq n
 \end{aligned}$$

with $(k_{i1}, k_{i2}, \dots, k_{in})$ being the i^{th} row of K .

Now then

$$f_A(k_{i1}\pi_1(x) + k_{i2}\pi_2(x) + \dots + k_{in}\pi_n(x), I) = A^{i-1}$$

$$\Rightarrow \sum_{j=1}^n k_{ij} \cdot C \cdot \pi_j(A) = CA^{i-1} \quad 1 \leq i \leq n$$

by multiplying both sides by C .

Define the operator $H : \mathbb{R}^n \rightarrow \mathbb{R}^n \cdot P$ by:

$$H(w) = \begin{bmatrix} C \\ CA \\ CA^2 \\ \vdots \\ CA^{n-1} \end{bmatrix} \cdot w$$

Since (A,C) is an observable pair the null space of H is $\{0\}$.

Since $C \cdot \pi_i(A) = 0$, $1 \leq i \leq n$, this implies

$$\sum_{j=1}^n k_{ij} C \pi_j(A) = 0 \quad \text{for all } 1 \leq i \leq n$$

$$\Rightarrow H(z) = 0.$$

This is a contradiction since $z \neq 0$ and the null space of H is $\{0\}$. This completes the proof of Theorem 2.2.

Theorem 2.2 is not an if and only if statement. But adding the condition that matrix $C'C$ is invertible we have

Lemma 2.6. Let A be an $n \times n$ square matrix, over the reals. Let P be the unique positive definite solution of the matrix equation

$$PA + A'P = -C'C \tag{2.9}$$

where $C'C$ is invertible. Then A is a stability matrix and (A,C) is an observable pair.

Proof: We have that the eigenvalues of $C'C$ are non-negative. Since $C'C$ is non-singular this implies that none of them is zero and therefore $C'C$ is positive definite. It then follows as in the proof of Theorem 2.1 that A is stability matrix.

We now show that (A,C) is observable.

The solution P of (2.9) can be written as:

$$P = \frac{1}{u^2} \cdot f_A(q_u(x,y), C'C)$$

where $q_u(x,y)$ as in (2.4), is positive. From Lemma (2.1) we have that there exists $\{\pi_i(x)\}$ which is a basis for $R_n(x)$ and

$$\begin{aligned} q_u(x,y) &= \sum_{j=1}^n \pi_j(x)\pi_j(y) \\ \Rightarrow P &= \frac{1}{u^2} \cdot f_A\left(\sum_{j=1}^n \pi_j(x)\pi_j(y), C'C\right) \\ &= \frac{1}{u^2} \cdot \sum_{j=1}^n f_A(\pi_j(x)\pi_j(y), C'C) \\ &= \frac{1}{u^2} \cdot \sum_{j=1}^n \pi_j(A')C'C\pi_j(A) \end{aligned}$$

Since $P > 0$ we have that

$$z'Pz = \sum_{j=1}^n z'\pi_j(A)'C'C\pi_j(A)z = \sum_{j=1}^n \|C\pi_j(A)z\|^2 > 0$$

Therefore if $z \neq 0$ we must have $\|C\pi_j(A)z\|^2 > 0$ for at least one j in the range $1 \leq j \leq n$. Suppose that $\|C\pi_k(A)z\|^2 > 0$ which implies that $C\pi_k(A)z \neq 0$.

Now $\{\pi_j(x)\}$ is a basis for $R_n(x)$, therefore there exists an invertible $n \times n$ matrix K such that:

$$K \cdot \begin{bmatrix} \pi_1(x) \\ \pi_2(x) \\ \vdots \\ \pi_n(x) \end{bmatrix} = \begin{bmatrix} 1 \\ x \\ \vdots \\ x^{n-1} \end{bmatrix}$$

The above represents n equations of the form

$$k_{i1}\pi_1(x) + k_{i2}\pi_2(x) + \dots + k_{in}\pi_n(x) = x^{i-1}$$

with $(k_{i1}, k_{i2}, \dots, k_{in})$ being the i^{th} row of K.

Therefore:

$$f_A(k_{i1}\pi_1(x) + \dots + k_{in}\pi_n(x), I) = A^{i-1}$$

$$\Rightarrow k_{i1}\pi_1(A) + k_{i2}\pi_2(A) + \dots + k_{in}\pi_n(A) = A^{i-1}$$

Multiply both sides by C.

$$\Rightarrow k_{i1}C \cdot \pi_1(A) + k_{i2}C \cdot \pi_2(A) + \dots + k_{in}C \cdot \pi_n(A) = CA^{i-1}$$

for $1 \leq i \leq n$

Let Λ be the matrix

$$\Lambda = \begin{bmatrix} k_{11}I_p & k_{12}I_p & \dots & k_{1n}I_p \\ k_{21}I_p & k_{22}I_p & \dots & k_{2n}I_p \\ \cdot & \cdot & \cdot & \cdot \\ \cdot & \cdot & \cdot & \cdot \\ k_{n1}I_p & k_{n2}I_p & \dots & k_{nn}I_p \end{bmatrix}$$

where I_p is the $p \times p$ identity matrix. (Matrix C is $p \times n$).

We then can write the above set of equations as:

$$\Lambda \cdot \begin{bmatrix} C\pi_1(A) \\ C\pi_2(A) \\ \cdot \\ \cdot \\ C\pi_n(A) \end{bmatrix} = \begin{bmatrix} C \\ CA \\ \cdot \\ \cdot \\ CA^{n-1} \end{bmatrix} = L$$

We can think of matrix L as a linear operator from R^n to $R^{n \cdot p}$. We wish to show that L is one- one, (i.e. that the null space of L is $\{ 0 \}$).

By construction matrix Λ is invertible since K is invertible, which means that if $w \neq 0$ an $n \cdot p \times 1$ vector then $\Lambda \cdot w \neq 0$.

Let w be the vector:

$$w = \begin{bmatrix} C\pi_1(A)z \\ C\pi_2(A)z \\ \cdot \\ \cdot \\ C\pi_n(A)z \end{bmatrix}$$

where $z \neq 0$ is an $n \times 1$ vector. We do have that $w \neq 0$ and therefore $\Delta w \neq 0$. But

$$\Delta \cdot w = \begin{bmatrix} C \cdot z \\ CA \cdot z \\ \cdot \\ \cdot \\ CA^{n-1} \cdot z \end{bmatrix} = L \cdot z$$

which implies that the null space of L is $\{0\}$ and that (A,C) is an observable pair.

Chapter 3

Computational Algorithms

3.1 Introduction

The proof of Theorem 2.1 is constructive and purely algebraic. It therefore gives great insight into how a computational algorithm should be constructed, for obtaining the solution P of an equation of the form

$$PA + A'P = -Q \quad (3.1)$$

where A is an $n \times n$ stability matrix. The algorithm so constructed, basically involves obtaining $\phi_2(x)$ the characteristic polynomial of A . Using the Extended Euclidean algorithm a polynomial $T_u(x)$ as in (2.3) can be obtained. Having these polynomials, the polynomial $P_\phi(x, y)$, $q_u(x, y)$ and the solution P are formed.

By restricting the field of interest R , to that of the rational numbers F , the procedure for obtaining the exact solution of (3.1) is fully implementable, using the remarkable facilities provided by the computer programming system MACSYMA available at M.I.T.

Three algorithms are presented here, the Rational, Integer, and Modular, which are based on the constructive proof of Theorem (2.1).

MACSYMA (Project MAC's SYmbolic MANipulation System) is a large computer programming system used for performing symbolic as well as numerical mathematical computations. This would easily allow us to make parametric studies.

3.2 The Rational Algorithm

This algorithm is a mere implementation of the steps outlined in the proof of Theorem (2.1).

- R₁) Obtain $\phi_2(x)$, the characteristic polynomial of A.
- R₂) Set $P_\phi(x,y) = \frac{\phi_2(x)\phi_2(y) - \phi_1(x)\phi_1(y)}{x+y}$
- R₃) Using the Extended Euclidean Algorithm obtain $T_u(x)$ and u .
- R₄) Set $q_u(x,y) = T_u(x)T_u(y)P_\phi(x,y) \bmod \Phi$
- R₅) Form $P_u = f_A(q_u(x,y), Q)$
- R₆) Set $P = \frac{1}{u^2} \cdot P_u$

3.3 The Integer Algorithm

Multiplying A and Q in (3.1) by a suitable positive integer an equivalent Lyapunov equation

$$PA_1 + A_1'P = -Q_1 \quad (3.2)$$

is obtained with A_1, Q_1 having integer entries. Suppose that $\phi_2'(x)$ is the characteristic polynomial of A_1 . It is clear that $\phi_2'(x)$ has integer coefficients and it can therefore be considered as an element of $Z[x,y]$ (the ring of polynomials in x and y over the Integers).

Let

$$\begin{aligned} \phi_1'(x) &= \phi_2'(-x) \\ P'_\phi(x,y) &= \frac{\phi_2'(x)\phi_2'(y) - \phi_1'(x)\phi_1'(y)}{x+y} \end{aligned} \quad (3.3)$$

We claim that $P'_\phi(x,y)$ is an element of $Z[x,y]$. Suppose that n is odd. It is clear that for $n=1$ or $n=3$

$$x+y \mid x^n + y^n$$

and that the quotient is an element of $Z[x,y]$. Suppose then that for all $m \leq n-1$ we have that $x+y \mid x^{2m+1} + y^{2m+1}$ and that the quotient is an element of $Z[x,y]$. Show that hypothesis is true for $m=n$.

$$x^{2n+1} + y^{2n+1} = (x^2 + y^2) (x^{2n-1} + y^{2n-1}) - x^2 y^2 (x^{2n-3} + y^{2n-3})$$

From the induction hypothesis we therefore have that $x + y \mid x^{2n+1} + y^{2n+1}$ and that the quotient is an element of $Z[x,y]$. For the case when n is even we have that

$$x + y \mid x^n - y^n$$

and that quotient is an element of $Z[x,y]$. Following the proof of Lemma 2.4 ii) we have that $P'_\varphi(x,y)$ is an element of $Z[x,y]$.

It is also clear that there exist polynomials $T'_u(x)$, $\lambda'_{u'}(x)$ and integer u' such that

$$T'_u(x)\varphi'_1(x) + \lambda'_{u'}(x)\varphi'_2(x) = u' \tag{3.4}$$

with $T'_u(x)$, $\lambda'_{u'}(x)$ having integer coefficients.

Since the leading coefficient of $\varphi'_2(x)$ is unity division by $\varphi'_2(x)$ is possible. If we then let Φ' be the ideal $(\varphi'_2(x), \varphi'_2(y))$ in $Z[x,y]$ we have

$$q'_u(x,y) = T'_u(x)T'_u(y)P'_\varphi(x,y) \text{ mod } \Phi'$$

being an element of $Z[x,y]$. Consequently

$$P^*_u = f_{A_1}(q'_u(x,y), Q_1) \tag{3.5}$$

has integer entries with the solution of (3.1) now being expressed as:

$$P = \frac{1}{(u')^2} \cdot P^*_u$$

In (3.4) it is required that polynomials $T'_u(x)$, $\lambda'_{u'}(x)$ and integer u' be found such that (3.3) is satisfied. Existence

can be shown in the following manner.

Let

$\varphi_2'(x) = a_0 x^n + a_1 x^{n-1} + \dots + a_n$. Define S to be the nxn matrix.

$$S = \begin{bmatrix} a_1 & a_0 & 0 & 0 & 0 & 0 & \dots & 0 \\ a_3 & a_2 & a_1 & a_0 & 0 & 0 & \dots & 0 \\ a_5 & a_4 & a_3 & a_2 & a_1 & a_0 & \dots & 0 \\ \cdot & \cdot & \cdot & \cdot & \cdot & \cdot & \dots & \cdot \\ \cdot & \cdot & \cdot & \cdot & \cdot & \cdot & \dots & \cdot \\ \cdot & \cdot & \cdot & \cdot & \cdot & \cdot & \dots & \cdot \\ a_{2n-1} & a_{2n-2} & \dots & \dots & \dots & \dots & \dots & a_n \end{bmatrix} \quad (3.6)$$

where $a_k = 0$ for $k > n$ and $a_0 = 1$. Since $\varphi_2'(x)$ is a stability polynomial, S is positive definite (cf. BROCKETT). Since $\det S > 0$ it is clear that for each allowable integer value of u' there exist unique polynomials $T_u'(x)$ $\lambda_u'(x)$ of degree less than n such that

$$T_u'(x) \varphi_1'(x) + \lambda_u'(x) \varphi_2'(x) = u'$$

If $T_u'(x) = d_1 x^{n-1} + d_2 x^{n-2} + \dots + d_n$ then

$$d_i = \frac{M_{ni} \cdot u'}{2 \det S} \quad 1 \leq i \leq n$$

where $M_{ni} = \det S_{ni}$ with S_{ni} the $(n-1) \times (n-1)$ matrix obtained from S by deleting the n^{th} row and i^{th} column.

By letting $u' = k \cdot (2 \det S)$, with k an integer greater than zero we have u' in Z and $T_u'(x)$, $\lambda_u'(x)$ in $Z[x, y]$.

The Integer algorithm proceeds as follows.

I₁) Obtain A_1, Q_1

I₂) Find $\varphi_2'(x)$ the characteristic polynomial of A_1

I₃) Set $P_\varphi'(x, y) = \frac{\varphi_2'(x)\varphi_2'(y) - \varphi_1'(x)\varphi_1'(y)}{x + y}$

- $I_4)$ Find $T'_u(x)$ and u'
 $I_5)$ Set $q'_u(x,y) = T'_u(x)T'_u(y)P'_\omega(x,y) \bmod \Phi'$
 $I_6)$ $P'_u = f_{A_1}(q'_u(x,y), Q_1)$
 $I_7)$ Set $P = \frac{1}{(u')^2} P'_u$

Doing all calculations in integer arithmetic may save time since greatest common divisor computations will not be performed in intermediate steps.

3.4 The Modular Algorithm

The integer algorithm paves the way for a modular approach to the solution. Suppose that p is a prime that does not divide $2 \cdot \det S$ with S defined in (3.6). If $A_1 = (a_{ij})$ and $Q_1 = (q_{ij})$ let

$${}_pA = (a_{ij} \bmod p)$$

$${}_pQ = (q_{ij} \bmod p)$$

both ${}_pA$ and ${}_pQ$ being considered as matrices over Z_p , the field of integers modulo p . Let $Z_p[x,y]$ be the ring of polynomials in x and y over Z_p .

Let

$${}_p\phi_2(x) = \det(Ix - {}_pA) \quad {}_p\phi_2(x) \text{ in } Z_p[x,y]$$

and ${}_p\phi_1(x) = {}_p\phi_2(-x)$

It can be easily shown that

$${}_p\phi_2(x) = \phi'_2(x) \bmod p$$

$${}_p\phi_1(x) = \phi'_1(x) \bmod p$$

where the notation $\phi'_2(x) \bmod p$ means: reduce each coefficient of $\phi'_2(x)$ modulo p considering the derived polynomial as an element of $Z_p[x,y]$.

Let

$$p^P_\varphi(x,y) = \frac{p^{\phi_2}(x)p^{\phi_2}(y) - p^{\phi_1}(x)p^{\phi_1}(y)}{x+y}$$

where $x+y$ is now thought as an element in $Z_p[x,y]$, the division done modulo p and $p^P_\varphi(x,y)$ being an element of $Z_p[x,y]$.

It follows that there exist polynomials $p^{T_u}(x), p^{\lambda_u}(x)$ in $Z_p[x,y]$ and p^u in Z_p such that:

$$p^{T_u}(x)p^{\phi_1}(x) + p^{\lambda_u}(x)p^{\phi_2}(x) = p^u$$

where:

$$p^{T_u}(x) = T'_u(x) \text{ mod } p$$

$$p^{\lambda_u}(x) = \lambda'_u(x) \text{ mod } p$$

$$p^u = u' \text{ mod } p$$

Let p^Φ be the ideal $(p^{\phi_2}(x), p^{\phi_2}(y))$ in $Z_p[x,y]$ and

$$\begin{aligned} p^q_u(x,y) &= p^{T_u}(x)p^{T_u}(y)p^P_\varphi(x,y) \text{ mod } p^\Phi \\ &= e_{00} + e_{10}y + e_{01}x + \dots + e_{(n-1)(n-1)}x^{n-1}y^{n-1} \end{aligned}$$

we have that

$$p^q_u(x,y) = q'_u(x,y) \text{ mod } p$$

Let

$$p^P_u = \sum_{jk} e_{kj} (p^{A'})^k p^Q (p^A)^j$$

with all operations done modulo p .

If

$$p^*_u = (g_{ij}) \text{ in (3.5) then}$$

$$p^P_u = (g_{ij} \text{ mod } p).$$

Now if p^P_u, p^u are obtained for a sufficient number of primes, the Chinese Remainder Theorem (cf. Knuth) can be used to find p^*_u and u' making it possible to obtain the solution

$$p = \frac{1}{(u')^2} \cdot p_u^*$$

The Chinese Remainder Theorem is used in the following manner. Let m_1 and m_2 be relatively prime so that $m_1 > m_2$. Let $u_1 = u \pmod{m_1}$ and $u_2 = u \pmod{m_2}$ where $0 \leq u < m_1 m_2$. If c, k are integers such that

$$c \cdot m_1 + k \cdot m_2 = 1$$

then

$$u = m_1 (\{c \cdot (u_2 - u_1)\} \pmod{m_2}) + u_1.$$

Suppose now that $m_1 = p_1 \cdot p_2 \cdot \dots \cdot p_{n-1}$, $m_2 = p_n$ where p_n is the n^{th} prime used. If u is some integer for which we have u_1 and u_2 then we may obtain $u \pmod{m_1 \cdot m_2}$ by the above procedure.

The way by which we ensure that p_u^* has been constructed is, by checking element wise at each iteration whether $p_u^* \cdot A + A' p_u^* = -Q$.

The reason why the selected primes p must not divide $2 \cdot \det S$ is because this guarantees that $p^{\phi_1}(x)$, $p^{\phi_2}(x)$ are relatively prime over $Z_p[x, y]$.

Since considerable coefficient growth takes place in intermediate computations of the Integer Algorithm it may be advantageous to implement the Modular Algorithm.

The Modular Algorithm

M₁) Obtain p^A, p^Q

M₂) Let $p^{\phi_2}(x) = \det (Ix - p^A)$

M₃) Set $p^{\phi}(x, y) = \frac{p^{\phi_2}(x)p^{\phi_2}(y) - p^{\phi_1}(x)p^{\phi_1}(y)}{x + y}$

M₄) Obtain ${}_p T_u(x) \pmod{p^u}$

M₅) Set ${}_p q_u(x, y) = {}_p T_u(x) {}_p T_u(y) \pmod{p^u}$

M₆) Obtain ${}_p P_u$

M₇) Repeat steps M₁-M₆ for a sufficient number of primes
and by use of the Chinese Remainder Theorem find P_u^*, u' .

M₈) Set
$$p = \frac{1}{(u')^2} \cdot P_u^*$$

Chapter 4

Computer Programs and Numerical Results

4.1 Introduction

The three algorithms presented in chapter 3 have been programmed on the extremely versatile computer programming system MACSYMA available here at M. I. T. Each algorithm has been programmed as a FUNCTION on MACSYMA. The function SLEAMR(N, PA, PQ) corresponds to the Rational Algorithm, the function SLEAMI (N, PA, PQ) corresponds to the Integer Algorithm and function SLEAMM (A,Q,PR,N,PA,PQ) to the Modular Algorithm. Evaluating each function at some arbitrary values of their arguments one obtains the solution of the corresponding Lyapunov Equation. We proceed now to explain this in more detail. (SLEAM stands for, Solution of Lyapunov Equation using Algebraic Methods.)

4.2 The Function SLEAMR

Purpose:

The value of this function is the solution of the Lyapunov Equation

$$PA + A'P = Q \quad (4.1)$$

where A and Q have rational entries, with A being a stability matrix and Q symmetric.

The arguments of the function

N = the dimension of the A matrix

PA = the A matrix

PQ = the Q matrix

By evaluating SLEAMR at N, PA=A and PQ=Q (ie SLEAMR(N, A, Q)) one obtains as the value of this function the solution of (4.1).

This is done using the Rational Algorithm.

The definition of function SLEAMR(N, PA, PQ) is shown in Table(4.1)

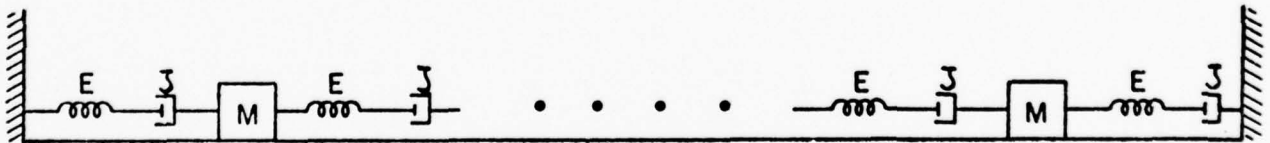


Figure 4.1

```

(C10) SLEWAK(U, PA, PC) := LLOCK(L), MAT(A) : MAT(LELEMINI(MAT(I) - PA)),
PFIX : LV(PFIX, X = - X), PF2Y : EV(PFIX, X = Y), PF1Y : EV(PFIX, X = - Y), PPF :
COEFF(I)(PFIX, PF2Y - PF1Y, X + Y, X, Y), KO : 0, KOP : 1, C : PFIX, L1, CA : DIVIDE(C, L, X),
N : MATXPAND(LAST(CA)), C : MATXPAND(FIRST(CA)), IF N = 0 THEN (TO : KO, FO : 0, CO(LB)) ELSE CO(L2), L2, C : 0,
U : N, T : KOP, KOP : KO, NO : NATEXPAND(T - C KO), CO(L1), L3, POU : REVERSE(L3 - TO EV(TU, X = 1) PPF, PF2, X),
PCU : NATEXPAND(REVERSE(L3, POU, PF2Y, Y)), PAT : TRANSPOSE(PF), CPCU : MAT(LAST(PCU)), 1, 1),
Z : REVERSE(COPLIST(ROFFACTOR, PCU)), FOR J THRU N DO (FOR I1 FROM N (J - 1) + 1 THRU N J DO CPCU
J, I1 - N (J - 1) :
MAT(Z I1), A1 : PQ, B1 : PQ, G2 : EMATRIX(N, N, 0, 1, 1), IF CPCU
1, 1 = MAT(C) THEN G1 :
EMATRIX(C, 0, 0, 1, 1) ELSE G1 : CPCU
1, 1 PQ, FOR I1 FROM 2 THRU N DO (B1 : A1 - PA, A1 : COPM(A1)(C1),
FOR J THRU I1 - 1 DO (IF CPCU
J, I1 = MAT(C) THEN DJ : 0 ELSE G2 : CPCU
J, I1 B1 + G2, B1 : PAT - L1),
IF CPCU
I1, I1 = MAT(C) THEN DJ : 0 ELSE G1 : CPCU
I1, I1 B1 + G1), PCU : --- (G1 + G2 + TRANSPOSE(C2))
PU
2

```

(C11)

Table 4.1

BEST AVAILABLE COPY

4.3 The Function SLEAMI

Purpose:

The value of this function is the solution of the Lyapunov Equation

$$PA + A'P = Q \quad (4.2)$$

where A and Q have integer entries, with A being a stability matrix and Q symmetric.

The arguments of the function.

N = the dimension of the A matrix

PA = the A matrix

PQ = the Q matrix

By evaluating SLEAMI at N, PA=A, PQ=Q (ie SLEAMI(N, A, Q)) one obtains the solution of (4.1). This is done using the Integer Algorithm.

The definition of function SLEAMI (N, PA, PQ) is given in Table (4.2).

```

(G12) SLEA(G, PA, PG) := DLOGN([], MATRIX : MAT(DIAGONAL(X IDENT(N) - PA)),
PFIX : EV(PFZX, X = - X), PFZY : EV(PFZX, X = Y), PFY : EV(PFZX, X = - Y), PPF :
COEFFS(PFZX PFZY - PFIY PFY, X + Y, X, Y), NP : N + 1, IF  $\frac{N}{2}$  = ENTIER( $\frac{-}{2}$ ) THEN K :  $\frac{N-1}{2}$  ELSE K :  $\frac{N}{2}$ ),
LA : [MAT(LAST(PFZX))], LB : [], FOR J THRU N DO (LA : APPEND(LA, [RATGOLF(PFZX, X, J)]), LB : APPEND(LB, [MAT(0)])),
MA : MATRIX(APPEND(REST(LA, NP - 2), REST(LB, 2))), FOR II FROM 2 THRU N DO (IF II <= N THEN (MA : MP - Z II,
OB : Z II, NA : LINDEX(MA, APPEND(REST(LA, NA), REST(LB, OB)))) ELSE (MA : N - Z II, OB : NP + OB,
NA : LINDEX(MA, APPEND(REST(LB, OB), REST(LA, NA))))) , TU : MAT(DIAGONAL(LINDEX(MA, N, N))),
PU : MAT(Z) FIRST(LA) TO, FOR L FROM N - 1 STEP - 1 THRU 1 DO TO : MAT(DIAGONAL(LINDEX(MA, N, L)) XN-L + TO,
PGU : REWINDEN(- TU EV(TU, X = Y) PPF, PFZX, X), PGU : NATEXPAND(REWINDEN(TU, PFZY, Y)), PAT : TRANSPOSE(PA),
PGU : EMATRIX(N, N, MAT(LAST(PGU)), 1, 1), Z : REVERSE(MPLIST(NONFACTOR, PGU)),
FOR J THRU N DO (FOR II FROM N (J - 1) + 1 THRU N J DO CPQU
J, II - N (J - 1) : RAT(Z) , AI : PG, EI : PG,
G2 : EMATRIX(N, N, 0, 1, 1), IF CPQU = MAT(0) THEN G1 : EMATRIX(N, N, 0, 1, 1) ELSE G1 : CPQU
1, 1,
FOR II FROM 2 THRU N DO (B1 : AI . PA, A1 : COPYMATRIX(EI), FOR J THRU II - 1 DO (IF CPQU = MAT(0) THEN BJ :
0 ELSE G2 : CPQU
J, II = MAT(0) THEN EJ : 0 ELSE G1 : CPQU
11, II = MAT(0) THEN EJ : 0 ELSE G1 : CPQU
11, II
PGU :  $\frac{1}{2}$  (G1 + G2 + TRANSPOSE(G2))
PG

```

(G13)

Table 4.2

BEST AVAILABLE COPY

4.4 The Function SLEAMM

Purpose:

The value of this function is the solution of the Lyapunov Equation

$$PA + A'P = Q \quad (4.3)$$

where A and Q have integer entries, with A being a stability matrix and Q symmetric.

The arguments of the function

N = the dimension of the A matrix

PA= A = the A matrix

PQ= Q = the Q matrix

PR = A LIST containing primes.

By evaluating SLEAMM at N, A, Q PR (ie SLEAMM (A, Q,PR, N, PA, PQ)) the solution of (4.3) is obtained as the value of the function. This is done using the Modular Algorithm.

As the computation progresses an integer is printed out showing the number of primes used so far. One should make sure that PR contains enough primes for the computation.

A List of primes is given in Table(4.3). The definition of the function is given in Table (4.4).

Primes;

(121) 34359737497, 34359737519, 34359737549, 34359737567, 34359737581, 34359737717, 34359737771, 34359737777,
 34359737791, 34359737813, 34359737821, 34359737837, 34359737849, 34359737869, 34359737917, 34359738011, 34359738049,
 34359738059, 34359738141, 34359738227, 34359738247, 34359738269, 34359738289, 34359738307, 34359738319, 34359738357,
 34359738421, 34359738451, 34359738467, 34359738493, 34359738557, 34359738587, 34359738599, 34359738607, 34359738641,
 34359738659, 34359738689, 34359738691, 34359738697, 34359738701, 34359738705, 34359738773, 34359738779, 34359738839,
 34359738857, 34359738899, 34359738877, 34359738883, 34359738887, 343597389431

(122)

Table 4.3

BEST AVAILABLE COPY

```

    1
    2
    3
    4
    5
    6
    7
    8
    9
    10
    11
    12
    13
    14
    15
    16
    17
    18
    19
    20
    21
    22
    23
    24
    25
    26
    27
    28
    29
    30
    31
    32
    33
    34
    35
    36
    37
    38
    39
    40
    41
    42
    43
    44
    45
    46
    47
    48
    49
    50
    51
    52
    53
    54
    55
    56
    57
    58
    59
    60
    61
    62
    63
    64
    65
    66
    67
    68
    69
    70
    71
    72
    73
    74
    75
    76
    77
    78
    79
    80
    81
    82
    83
    84
    85
    86
    87
    88
    89
    90
    91
    92
    93
    94
    95
    96
    97
    98
    99
    100
    101
    102
    103
    104
    105
    106
    107
    108
    109
    110
    111
    112
    113
    114
    115
    116
    117
    118
    119
    120
    121
    122
    123
    124
    125
    126
    127
    128
    129
    130
    131
    132
    133
    134
    135
    136
    137
    138
    139
    140
    141
    142
    143
    144
    145
    146
    147
    148
    149
    150
    151
    152
    153
    154
    155
    156
    157
    158
    159
    160
    161
    162
    163
    164
    165
    166
    167
    168
    169
    170
    171
    172
    173
    174
    175
    176
    177
    178
    179
    180
    181
    182
    183
    184
    185
    186
    187
    188
    189
    190
    191
    192
    193
    194
    195
    196
    197
    198
    199
    200
    201
    202
    203
    204
    205
    206
    207
    208
    209
    210
    211
    212
    213
    214
    215
    216
    217
    218
    219
    220
    221
    222
    223
    224
    225
    226
    227
    228
    229
    230
    231
    232
    233
    234
    235
    236
    237
    238
    239
    240
    241
    242
    243
    244
    245
    246
    247
    248
    249
    250
    251
    252
    253
    254
    255
    256
    257
    258
    259
    260
    261
    262
    263
    264
    265
    266
    267
    268
    269
    270
    271
    272
    273
    274
    275
    276
    277
    278
    279
    280
    281
    282
    283
    284
    285
    286
    287
    288
    289
    290
    291
    292
    293
    294
    295
    296
    297
    298
    299
    300
    301
    302
    303
    304
    305
    306
    307
    308
    309
    310
    311
    312
    313
    314
    315
    316
    317
    318
    319
    320
    321
    322
    323
    324
    325
    326
    327
    328
    329
    330
    331
    332
    333
    334
    335
    336
    337
    338
    339
    340
    341
    342
    343
    344
    345
    346
    347
    348
    349
    350
    351
    352
    353
    354
    355
    356
    357
    358
    359
    360
    361
    362
    363
    364
    365
    366
    367
    368
    369
    370
    371
    372
    373
    374
    375
    376
    377
    378
    379
    380
    381
    382
    383
    384
    385
    386
    387
    388
    389
    390
    391
    392
    393
    394
    395
    396
    397
    398
    399
    400
    401
    402
    403
    404
    405
    406
    407
    408
    409
    410
    411
    412
    413
    414
    415
    416
    417
    418
    419
    420
    421
    422
    423
    424
    425
    426
    427
    428
    429
    430
    431
    432
    433
    434
    435
    436
    437
    438
    439
    440
    441
    442
    443
    444
    445
    446
    447
    448
    449
    450
    451
    452
    453
    454
    455
    456
    457
    458
    459
    460
    461
    462
    463
    464
    465
    466
    467
    468
    469
    470
    471
    472
    473
    474
    475
    476
    477
    478
    479
    480
    481
    482
    483
    484
    485
    486
    487
    488
    489
    490
    491
    492
    493
    494
    495
    496
    497
    498
    499
    500
    501
    502
    503
    504
    505
    506
    507
    508
    509
    510
    511
    512
    513
    514
    515
    516
    517
    518
    519
    520
    521
    522
    523
    524
    525
    526
    527
    528
    529
    530
    531
    532
    533
    534
    535
    536
    537
    538
    539
    540
    541
    542
    543
    544
    545
    546
    547
    548
    549
    550
    551
    552
    553
    554
    555
    556
    557
    558
    559
    560
    561
    562
    563
    564
    565
    566
    567
    568
    569
    570
    571
    572
    573
    574
    575
    576
    577
    578
    579
    580
    581
    582
    583
    584
    585
    586
    587
    588
    589
    590
    591
    592
    593
    594
    595
    596
    597
    598
    599
    600
    601
    602
    603
    604
    605
    606
    607
    608
    609
    610
    611
    612
    613
    614
    615
    616
    617
    618
    619
    620
    621
    622
    623
    624
    625
    626
    627
    628
    629
    630
    631
    632
    633
    634
    635
    636
    637
    638
    639
    640
    641
    642
    643
    644
    645
    646
    647
    648
    649
    650
    651
    652
    653
    654
    655
    656
    657
    658
    659
    660
    661
    662
    663
    664
    665
    666
    667
    668
    669
    670
    671
    672
    673
    674
    675
    676
    677
    678
    679
    680
    681
    682
    683
    684
    685
    686
    687
    688
    689
    690
    691
    692
    693
    694
    695
    696
    697
    698
    699
    700
    701
    702
    703
    704
    705
    706
    707
    708
    709
    710
    711
    712
    713
    714
    715
    716
    717
    718
    719
    720
    721
    722
    723
    724
    725
    726
    727
    728
    729
    730
    731
    732
    733
    734
    735
    736
    737
    738
    739
    740
    741
    742
    743
    744
    745
    746
    747
    748
    749
    750
    751
    752
    753
    754
    755
    756
    757
    758
    759
    760
    761
    762
    763
    764
    765
    766
    767
    768
    769
    770
    771
    772
    773
    774
    775
    776
    777
    778
    779
    780
    781
    782
    783
    784
    785
    786
    787
    788
    789
    790
    791
    792
    793
    794
    795
    796
    797
    798
    799
    800
    801
    802
    803
    804
    805
    806
    807
    808
    809
    810
    811
    812
    813
    814
    815
    816
    817
    818
    819
    820
    821
    822
    823
    824
    825
    826
    827
    828
    829
    830
    831
    832
    833
    834
    835
    836
    837
    838
    839
    840
    841
    842
    843
    844
    845
    846
    847
    848
    849
    850
    851
    852
    853
    854
    855
    856
    857
    858
    859
    860
    861
    862
    863
    864
    865
    866
    867
    868
    869
    870
    871
    872
    873
    874
    875
    876
    877
    878
    879
    880
    881
    882
    883
    884
    885
    886
    887
    888
    889
    890
    891
    892
    893
    894
    895
    896
    897
    898
    899
    900
    901
    902
    903
    904
    905
    906
    907
    908
    909
    910
    911
    912
    913
    914
    915
    916
    917
    918
    919
    920
    921
    922
    923
    924
    925
    926
    927
    928
    929
    930
    931
    932
    933
    934
    935
    936
    937
    938
    939
    940
    941
    942
    943
    944
    945
    946
    947
    948
    949
    950
    951
    952
    953
    954
    955
    956
    957
    958
    959
    960
    961
    962
    963
    964
    965
    966
    967
    968
    969
    970
    971
    972
    973
    974
    975
    976
    977
    978
    979
    980
    981
    982
    983
    984
    985
    986
    987
    988
    989
    990
    991
    992
    993
    994
    995
    996
    997
    998
    999
    1000
  
```

Table 4.4

BEST AVAILABLE COPY

4.5 A Numerical Example

The example corresponds to the evaluation of

$$G = \int_0^{\infty} x'(t) \cdot Q \cdot (t) dt$$

where $x(t)$ is a solution of

$$\dot{x}(t) = Ax(t) \quad x(0) = c \quad (4.4)$$

The system modeled by (4.4) is given in Figure (4.1)

The A matrix of a system with five blocks evaluated at $\zeta=1$, $E=1$ and $M=10000$ (a value assignment which forces the system to have characteristic roots close to the imaginary axis) the matrix Q, and the solution P of the equation $PA + A'P = Q$ are given in Tables (4.5), (4.5), (4.6), respectively.

4.6 The Parametric Case

With some minor alterations to the function SLEAM(N, PA, PQ), the function PRMTRC (N, PA, PQ) was defined for the purpose of obtaining a parametric solution to equation $PA + A'P = -Q$. The definition of PRMTRC (N, PA, PQ) is given in Table (4.7).

The following example corresponds to the evaluation of

$$G = \int_0^{\infty} x'(t) \cdot Q \cdot x(t) dt$$

where $x(t)$ is a solution of

$$\dot{x}(t) = A x(t) \qquad x(0) = c .$$

The A matrix for a system as in Figure (4.1) with two blocks, the matrix Q and the parametric solution P are given in Table (4.8).

BEST AVAILABLE COPY

47

$\frac{E}{2Z}$	$\frac{E}{2Z}$	$\frac{E}{2Z}$	$\frac{E}{2Z}$
$\frac{H}{3Z}$	$\frac{H}{3Z}$	$\frac{H}{3Z}$	$\frac{H}{3Z}$
$\frac{L}{2Z}$	$\frac{L}{2Z}$	$\frac{L}{2Z}$	$\frac{L}{2Z}$
$\frac{H}{6Z}$	$\frac{H}{6Z}$	$\frac{H}{6Z}$	$\frac{H}{6Z}$

0	0	0	0
0	1	0	0
0	0	0	0
0	0	0	1

$\frac{E}{2Z}$	$\frac{E}{2Z}$	$\frac{E}{2Z}$	$\frac{E}{2Z}$
$\frac{H}{3Z}$	$\frac{H}{3Z}$	$\frac{H}{3Z}$	$\frac{H}{3Z}$
$\frac{L}{2Z}$	$\frac{L}{2Z}$	$\frac{L}{2Z}$	$\frac{L}{2Z}$
$\frac{H}{6Z}$	$\frac{H}{6Z}$	$\frac{H}{6Z}$	$\frac{H}{6Z}$

Table 4.8

q:

(C23)

(C24) q:

(L24)

(C25) p:

(L25)/k:

(C26)

Chapter 5

Generalizations and Extensions

5.1 The Matrix Equation PA+BP=-C

We now employ the ideas developed in Chapter 2 to show

Lemma 5.1. Let A be an nxn matrix over the reals and B an mxm matrix over the reals, and C an mxn matrix over the reals. Let

$$\phi_2(x) = \det(Ix-A)$$

$$\psi_2(x) = \det(Ix-B)$$

$$\phi_1(x) = \phi_2(-x)$$

$$\psi_1(x) = \psi_2(-x)$$

Suppose that $\psi_1(x)$ and $\phi_2(x)$ are relatively prime such that

$$\lambda_u(x)\psi_1(x) + \mu_u(x)\phi_2(x) = u$$

$$\lambda'_u(x)\psi_2(x) + \mu'_u(x)\phi_1(x) = u$$

for $\lambda_u(x), \mu_u(x), \lambda'_u(x), \mu'_u(x)$ polynomials in $R[x,y]$ and u in R .

And let

$$P_{\psi\phi}(x,y) = \frac{\phi_2(x)\psi_2(y) - \phi_1(y)\psi_1(x)}{x+y}$$

i) $P_{\psi\phi}(x,y)$ is an element of $R[x,y]$.

ii) Let $f_{BA} : R[x,y] \times MN \rightarrow MN$ be the action defined by

$$f_{BA}(g(x,y), M) = \sum_{jk} g_{jk} B^j M A^k$$

where MN is the space of all mxn matrices over the reals.

Let

$$q_u(x,y) = \lambda_u(x)\mu'_u(y)P_{\psi\phi}(x,y) \text{ mod } \Psi$$

where Ψ is the ideal $(\phi_2(x), \psi_2(y))$ in $R[x,y]$.

Then

$$PA + BP = -C \tag{5.1}$$

has a unique solution given by

$$P = \frac{1}{u^2} f_{BA}(q_u(x,y), C)$$

Proof of i). Let

$$\begin{aligned}\varphi_2(x) &= a_n x^n + a_{n-1} x^{n-1} + \dots + a_1 = f_0 x^n + f_1 x^{n-1} + \dots + f_n \\ \psi_1(y) &= (-1)^m b_m y^{m-1} + (-1)^{m-1} b_{m-1} y^{m-2} + \dots + b_1 \\ &= e_0 y^m + e_1 y^{m-1} + \dots + e_m\end{aligned}$$

In a similar manner to the proof of Lemma 2.4 , let

$$\begin{aligned}g(x,y) &= \varphi_2(x) \psi_2(y) = \sum_{jk} g_{jk} x^k y^j \\ h(x,y) &= \varphi_1(y) \psi_1(x) = \sum_{il} h_{il} x^l y^i\end{aligned}$$

It is clear that $g_{jk} = a_k b_j$, $h_{il} = (-1)^{i+1} a_i b_l$

Let $b(x,y) = g(x,y) - h(x,y)$ which can be written as

$$\begin{aligned}b(x,y) &= \sum_{\substack{jk \\ 0 \leq j \leq m \\ 0 \leq k \leq n}} g_{jk} x^k y^j - h_{kj} x^j y^k \\ &= \sum_{jk} a_k b_j x^k y^j - (-1)^{k+j} a_k b_j x^j y^k \quad (5.2)\end{aligned}$$

Now if $k+j$ is even then the corresponding term in the above sum becomes:

$$\begin{aligned}\text{if } k &= \min(j,k) \\ & a_k b_j x^k y^k (y^{j-k} - x^{j-k})\end{aligned}$$

$$\begin{aligned}\text{if } j &= \min(j,k) \\ & a_k b_j x^j y^j (x^{k-j} - y^{k-j})\end{aligned}$$

And if $k+j$ is odd then the corresponding term in the above sum becomes:

$$\begin{aligned}\text{if } k &= \min(j,k) \\ & a_k b_j x^k y^k (y^{j-k} + x^{j-k})\end{aligned}$$

if $j = \min(j, k)$

$$a_k b_j x^j y^j (x^{k-j} + y^{k-j})$$

But in any case $x+y$ will divide each term (as in Lemma 2.4) and the quotient of $b(x,y)$ divided by $x+y$ will be the sum of the quotients obtained by dividing each term in the sum (5.2) by $x+y$.

Proof of ii). The proof will proceed in three steps.

Step 1. We list some properties of action f_{BA}

- i) $f_{BA}(u, M) = uM$ where u is a unit in $R[x, y]$
- ii) $f_{BA}(g(x, y) + h(x, y), M) = f_{BA}(g(x, y), M) + f_{BA}(h(x, y), M)$
- iii) $f_{BA}(g(x, y)h(x, y), M) = f_{BA}(g(x, y), f_{BA}(h(x, y), M))$
 $= f_{BA}(h(x, y), f_{BA}(g(x, y), M))$
- iv) $f_{BA}(g(x, y), M) = f_{BA}(g(x, y) \bmod \Psi, M)$
- v) $f_{BA}(g(x, y), M+N) = f_{BA}(g(x, y), M) + f_{BA}(g(x, y), N)$

All the above are analogous to the properties of the action f_A and in the case when $B = A'$ then

$$f_{BA}(g(x, y), M) = f_A(g(x, y), M)$$

for all $g(x, y)$ in $R[x, y]$ and M in M .

Properties i), ii) and v) are quite clear. We now show that property iii) holds.

Let

$$g(x, y) = \sum_{jk} g_{jk} x^k y^j \quad h(x, y) = \sum_{il} h_{il} x^l y^i$$

$$g(x, y)h(x, y) = \sum_{st} q_{st} x^t y^s$$

$$= \sum_{st} \left(\sum_{\substack{i+j=s \\ k+l=t}} g_{jk} h_{il} \right) x^t y^s$$

$$\begin{aligned}
 f_{BA}(q(x,y), M) &= \sum_{st} q_{st} B^{sMA^t} \\
 &= \sum_{st} \left(\sum_{\substack{i+j=s \\ k+l=t}} g_{jk} h_{il} \right) B^{sMA^t}
 \end{aligned}$$

$$f_{BA}(g(x,y), M) = \sum_{jk} g_{jk} B^{jMA^k}$$

$$\begin{aligned}
 f_{BA}(h(x,y), f_{BA}(g(x,y), M)) &= \sum_{il} h_{il} B^{iA^l} \left(\sum_{jk} g_{jk} B^{jMA^k} \right) A^l \\
 &= \sum_{il} \sum_{jk} h_{il} g_{jk} B^{i+jMA^{k+l}}
 \end{aligned}$$

let $s=i+j$, $t=k+l$

$$\begin{aligned}
 &= \sum_{st} \left(\sum_{\substack{i+j=s \\ k+l=t}} h_{il} g_{jk} \right) B^{sMA^t} \\
 &= f_{BA}(q(x,y), M)
 \end{aligned}$$

We now show property iv).

Any polynomial $h(x,y)$ in $R[x,y]$ can be uniquely written as:

$$h(x,y) = a(x,y)\varphi_2(x) + b(x,y)\psi_2(y) + r(x,y)$$

where the degree of $r(x,y)$ is less than m in y and less than n in x , by first dividing $h(x,y)$ by $\varphi_2(x)$ and then dividing the remainder by $\psi_2(x)$. Therefore

$$\begin{aligned}
 f_{BA}(h(x,y), M) &= f_{BA}(a(x,y)\varphi_2(x), M) + f_{BA}(b(x,y)\psi_2(y), M) \\
 &\quad + f_{BA}(r(x,y), M) \\
 &= f_{BA}(a(x,y), f_{BA}(\varphi_2(x), M)) \\
 &\quad + f_{BA}(b(x,y), f_{BA}(\psi_2(y), M)) + f_{BA}(r(x,y), M) \\
 &= f_{BA}(a(x,y), M\varphi_2(A)) + f_{BA}(b(x,y), \psi_2(B)M) \\
 &\quad + f_{BA}(r(x,y), M) \\
 &= f_{BA}(r(x,y), M) = f_{BA}(h(x,y) \bmod \Psi, M)
 \end{aligned}$$

because of the Cayley-Hamilton Theorem.

Step 2. Since

$$q_u(x, y) = \lambda_u(x) \mu_u'(y) P_{\psi\phi}(x, y) \text{ mod } \Psi$$

we will have

$$\begin{aligned} (x+y)(\lambda_u(x) \mu_u'(y) P_{\psi\phi}(x, y)) &= \lambda_u(x) \mu_u'(y) (\phi_2(x) \psi_2(y) - \phi_1(y) \psi_1(x)) \\ &= \lambda_u(x) \mu_u'(y) \phi_2(x) \psi_2(y) \\ &\quad - \lambda_u(x) \mu_u'(y) \phi_1(y) \psi_1(x) \\ &= \lambda_u(x) \mu_u'(y) \phi_2(x) \psi_2(y) \\ &\quad - (u - \mu_u(x) \phi_2(x)) (u - \lambda_u'(y) \psi_2(y)) \\ &= \lambda_u(x) \mu_u'(y) \phi_2(x) \psi_2(y) - u^2 + u \lambda_u'(y) \psi_2(y) \\ &\quad + u \mu_u(x) \phi_2(x) - \mu_u(x) \lambda_u'(y) \phi_2(x) \psi_2(y) \end{aligned}$$

which implies that

$$(x+y)q_u(x, y) \text{ mod } \Psi = -u^2.$$

Step 3. We now show that

$$P = \frac{1}{u^2} f_{BA}(q_u(x, y), C)$$

is the unique solution of (5.1).

$$\begin{aligned} PA + BP &= \frac{1}{u^2} (f_{BA}(q_u(x, y), C)A + Bf_{BA}(q_u(x, y), C)) \\ &= \frac{1}{u^2} (f_{BA}(x, f_{BA}(q_u(x, y), C)) + f_{BA}(y, f_{BA}(q_u(x, y), C))) \\ &= \frac{1}{u^2} (f_{BA}(x+y, f_{BA}(q_u(x, y), C))) \\ &= \frac{1}{u^2} (f_{BA}((x+y)q_u(x, y), C)) \\ &= \frac{1}{u^2} (f_{BA}((x+y)q_u(x, y) \text{ mod } \Psi, C)) \\ &= \frac{1}{u^2} (-u^2 C) = -C \end{aligned}$$

Uniqueness follows by observing that the linear operator
 $L: R^{mn} \rightarrow R^{mn}$ defined by

$$L(P) = PA + BP$$

is onto since no restriction was placed on C. This implies that L is one-one. This completes the proof of Lemma 5.1.

We have shown that $PA + BP = -C$ has a unique solution if $\psi_1(x)$ and $\phi_2(x)$ are relatively prime where

$$\psi_2(x) = \det(Ix-B)$$

$$\phi_2(x) = \det(Ix-A)$$

$$\psi_1(x) = \psi_2(-x)$$

The usual statement of this theorem [cf. Bellman] is as follows.

The equation $PA + BP = -C$ has a unique solution for all C if $\lambda_i + \mu_j \neq 0$ where λ_i are the characteristic roots of A and μ_j the characteristic roots of B.

We end this section by showing that these two statements are equivalent.

Assume that $\psi_1(x)$ and $\phi_2(x)$ are relatively prime. Suppose then that there exist i, j such that $\lambda_i + \mu_j = 0$. This means that $\lambda_i = -\mu_j$ which implies that $\psi_1(x)$ and $\phi_2(x)$ have at least one root in common. This in turn implies that $\psi_1(x)$ and $\phi_2(x)$ have a nontrivial common divisor which is a contradiction.

Assume on the other hand that $\lambda_i + \mu_j \neq 0$ for all i, j . Suppose then that there exists a $k(x)$ of degree greater than or equal to one, such that $k(x) \mid \psi_1(x)$ and $k(x) \mid \phi_2(x)$. This would imply that $\psi_1(x)$ and $\phi_2(x)$ have at least one root in common which contradicts our initial assumption.

The above suggests an algorithm for obtaining the solution of equation (5.1). As in the case of the Lyapunov equation (3.1) Rational, Integer and Modular versions of the algorithm can be constructed in a similar manner.

Algorithm for solving equation $PA + BP = -C$.

A₁) Obtain $\phi_2(x)$, $\psi_2(x)$ the characteristic polynomials of A and B respectively.

$$A_2) \text{ Set } P_{\psi\phi}(x,y) = \frac{\phi_2(x)\psi_2(y) - \phi_1(y)\psi_1(x)}{x + y}$$

A₃) Using the Extended Euclidean Algorithm obtain $\lambda_u(x)$, $\lambda'_u(x)$, $\mu_u(x)$, $\mu'_u(x)$ and u.

$$A_4) \text{ Set } q_u(x,y) = \lambda_u(x)\mu'_u(y)P_{\psi\phi}(x,y) \text{ mod } \Psi$$

$$A_5) \text{ Form } P_u = f_{BA}(q_u(x,y), c)$$

$$A_6) \text{ Set } P = \frac{1}{u^2} \cdot P_u$$

5.2 Conclusions

In closing we wish to comment on what has been accomplished by this thesis, point out some disadvantages associated with the method used in solving the Lyapunov equation and discuss several possibilities that can be pursued in the future.

We have constructed purely algebraic algorithms for obtaining the exact solution of the Lyapunov equation. The algebraic structure on which the methods are based is quite rich and can further be exploited. The algorithms are quite simple requiring no obscure algebraic constructions, (the Extended Euclidean Algorithm providing a basis building block) and as demonstrated fully implementable on existing computers.

The price we had to pay for an exact solution takes the form of coefficient growth, creating space requirements. The critical parameters which dictate the amount of storage required, are: dimension of the A matrix as well as the size of the entries in both the A and the Q matrices. The problem of space has quite adequately been dealt with by the introduction of the Modular algorithm. But in doing so the execution time is increased. In this thesis no serious time complexity evaluation is presented.

In most engineering situations an exact solution is not required, but merely a five or ten digit approximation. Existing methods completely neglect the question of accuracy in the approximation to the solution of the Lyapunov equation. Because of the nature of the method presented, which results in an exact

solution, it is quite possible that a closer examination may reveal a scheme by which some control can be exercised on the accuracy of the approximation. As exhibited by the parametric example included in chapter 4 our method offers great possibilities for parametric studies.

We have extended the results and suggested algebraic methods of solution for the more general matrix equation

$$PA + BP = -C.$$

The Riccati equation did come under consideration and some less important 2×2 examples were solved by Newton's Method with our method being employed in the solution of the intermediate Lyapunov equations. The problem encountered hindering further progress was again that of coefficient growth. It was felt that that in order to attempt more realistic examples it would be wise to either first devise a method for obtaining approximate solutions with controlled accuracy or re-examine the Riccati equation under the light of the present work.

Finally we have gained great insight from all this work. We feel that this is only the beginning of a more serious study on the computational aspects of Control Theory.

APPENDIX

This Appendix contains the proofs of Lemmata (2.1), (2.2), (2.3) and (2.4) found in section (2.2).

Lemma 2.1. Let $p(x,y)$ be a polynomial in $R[x,y]$ with $C(p)$ being an $m \times m$ matrix. Then $p(x,y)$ is positive if and only if there exist polynomials $\pi_1(x), \dots, \pi_m(x)$ such that

$$p(x,y) = \sum_{i=1}^m \pi_i(x) \pi_i(y)$$

where $\{\pi_i(x)\}$ are a basis for $R_m(x)$.

proof: Suppose that $p(x,y)$ is positive. This implies that $C(p)$ is positive definite and symmetric. From linear algebra [7] we have that

$$C(p) = V \cdot V'$$

for some real $m \times m$ matrix $V=(v_{ij})$. This implies that $\det V \neq 0$ and therefore V is invertible.

$$\begin{aligned} \text{since } p(x,y) &= l'(y)C(p)l(x) \\ &= (l'(y) \cdot V) \cdot (V' \cdot (x)) \end{aligned}$$

$$\text{let } \pi_1(y) = v_{11} + v_{21}y + v_{31}y^2 + \dots + v_{m1}y^{m-1}$$

$$\text{and } \pi_i(y) = v_{1i} + v_{2i}y + \dots + v_{mi}y^{m-1}$$

$$1 \leq i \leq m$$

and we have

$$p(x,y) = \sum_{i=1}^m \pi_i(y) \cdot \pi_i(x)$$

Let $g(x)$ be a polynomial in $R_m(x)$.

$$g(x) = g_1 + g_2x + \dots + g_mx^{m-1}$$

Since V is invertible it has m linearly independent columns $\{v_i\}$ which form a basis for all vectors of length m .

We therefore have real numbers $\alpha_1 \alpha_2 \dots \alpha_m$ such that

$$\begin{bmatrix} g_1 \\ g_2 \\ \cdot \\ \cdot \\ g_m \end{bmatrix} = \alpha_1 v_1 + \alpha_2 v_2 \dots + \alpha_m v_m$$

and that

$$[1 \ x \ x^2 \ \dots \ x^{m-1}] \begin{bmatrix} g_1 \\ g_2 \\ \cdot \\ \cdot \\ g_m \end{bmatrix} = [1 \ x \ x^2 \ \dots \ x^{m-1}] \begin{bmatrix} \alpha_1 v_1 + \alpha_2 v_2 + \dots + \alpha_m v_m \end{bmatrix}$$

which equivalently is written as:

$$\begin{aligned} g(x) &= \alpha_1 \pi_1(x) + \alpha_2 \pi_2(x) + \dots + \alpha_m \pi_m(x) \\ &= \sum_{i=1}^m \alpha_i \pi_i(x) \end{aligned}$$

therefore $\{\pi_i(x)\}$ form a basis of $R_m(x)$.

Suppose now that there exist polynomials $\pi_1(x), \pi_2(x), \dots, \pi_m(x)$

forming a basis for $R_m(x)$ such that

$$\begin{aligned} p(x, y) &= \sum_{i=1}^m \pi_i(x) \cdot \pi_i(y) \\ \Rightarrow &= \sum_{i=1}^m [1 \ y \ \dots \ y^{m-1}] \begin{bmatrix} \pi_{i1} \\ \pi_{i2} \\ \cdot \\ \cdot \\ \pi_{im} \end{bmatrix} [\pi_{i1} \ \dots \ \pi_{im}] \begin{bmatrix} 1 \\ x \\ \cdot \\ \cdot \\ x^{m-1} \end{bmatrix} \end{aligned}$$

where $\pi_i(x) = \pi_{i1} + \pi_{i2}x + \dots + \pi_{im}x^{m-1}$

We can therefore write $p(x,y)$ as:

$$p(x,y) = [1, y \dots y^{m-1}] \Pi \cdot \Pi' \begin{bmatrix} 1 \\ x \\ \cdot \\ \cdot \\ x^{m-1} \end{bmatrix}$$

where the i^{th} column of $\Pi = (\pi_{ij})$ is

$$\pi_i = \begin{bmatrix} \pi_{i1} \\ \pi_{i2} \\ \cdot \\ \cdot \\ \pi_{im} \end{bmatrix}$$

Since $\{\pi_i(x)\}$ form a basis we must have $\{\pi_i\}$ being linearly independent and $\det \Pi \neq 0$.

I also claim that the largest power of $p(x,y)$ in x or y is $m-1$. Since if we assume that there are no terms in $p(x,y)$ which are of degree $m-1$ in either x or y we must have

$$\sum_{i=1}^m \pi_{im} \cdot \pi_i = 0$$

implying that $\pi_{im} = 0$, $1 \leq i \leq m$, and therefore a contradiction to the hypothesis that $\{\pi_i\}$ are linearly independent.

This ensures that $C(p) = \Pi \cdot \Pi'$ and that it is symmetric and positive semidefinite.

Assume now that there exists some vector $z \neq 0$ such that

$$z' \Pi \Pi' z = 0$$

Since Π is invertible this cannot happen and therefore $C(p) = \Pi \cdot \Pi'$ is positive definite.

Lemma 2.2. Let n be the degree of $\varphi(x)$. If $p(x,y) \bmod \varphi$ is positive of degree $n-1$ in both x and y then $\sigma(x)\sigma(y)p(x,y) \bmod \varphi$ is positive of degree $n-1$ in x and y , if and only if $\varphi(x)$ and $\sigma(x)$ are relatively prime.

proof: The proof will proceed in three steps.

step 1. We first show that there exists a vector space isomorphism between $R_n(x)$ (the vector space over R of polynomials of degree less than n under addition) and the quotient space $R[x]/\varphi$ (where $\varphi = (\varphi(x))$ considered as a vector space over R under addition. ($R[x]/\varphi$ is actually an algebra if we also include multiplication.))

Let $t: R_n(x) \rightarrow R[x]/\varphi$ be defined by

$$t(g(x)) = \varphi + g(x).$$

It is a vector space homomorphism since

$$t(\alpha_1 g_1(x) + \alpha_2 g_2(x)) = \alpha_1 t(g_1(x)) + \alpha_2 t(g_2(x))$$

Let $\varphi + g(x)$ be an element of $R[x]/\varphi$. If $g \bmod \varphi$ denotes the polynomial in $\varphi + g(x)$ of minimal degree (which must be less than n) we have

$$t(g \bmod \varphi) = \varphi + g \bmod \varphi = \varphi + g(x)$$

Let $g_1(x) \neq g_2(x)$ be elements in $R_n(x)$. Then it is clear that $\varphi + g_1(x) \neq \varphi + g_2(x)$ and this shows that t is an isomorphism.

step 2. We now show that if $\{\pi_i(x)\} \quad 1 \leq i \leq n$ is a basis for $R_n(x)$ then $\{\sigma(x)\pi_i(x)\}$ is also a basis for $R_n(x)$ if and only if $\sigma(x), \varphi(x)$ are relatively prime.

If $\{\pi_i(x)\}$ is a basis for $R_n(x)$ then $\varphi + \pi_i(x)$ is a basis for $R[x]/\varphi$.

Suppose that $\sigma(x)$, $\varphi(x)$ are relatively prime. This implies that there exists $\lambda(x)$ in $R_n(x)$ such that

$$(\varphi + \lambda(x)) \cdot (\varphi + \sigma(x)) = \varphi + 1$$

where $\varphi+1$ denotes the multiplicative identity in $R[x]/\varphi$

For any coset $\varphi + a(x)$ there exist k_i in R such that

$$\begin{aligned} (\varphi + \lambda(x)) \cdot (\varphi + a(x)) &= \sum_{i=1}^n k_i (\varphi + \pi_i(x)) \\ &= (\varphi + 1) \cdot \left(\sum_{i=1}^n k_i (\varphi + \pi_i(x)) \right) \\ &= (\varphi + \lambda(x)) \cdot \left(\sum_{i=1}^n k_i (\varphi + \sigma(x) \pi_i(x)) \right) \end{aligned}$$

$$(\varphi + a(x)) = \sum_{i=1}^n k_i (\varphi + \sigma(x) \pi_i(x))$$

and therefore $\{\varphi + \sigma(x) \pi_i(x)\}$ is a basis for $R[x]/\varphi$. By step 1 we have that

$$\{(\sigma(x) \pi_i(x)) \bmod \varphi\} \text{ is basis for } R_n(x).$$

Suppose that $\sigma(x)$, $\varphi(x)$ have a nontrivial factor in common, i.e. there exists $T(x)$ in $R_n(x)$, $(\varphi+T(x)) \neq 0$ such that

$$(\varphi + \tau(x)) \cdot (\varphi + \sigma(x)) = \varphi + 0$$

where $\varphi+0$ is the additive identity in $R[x]/\varphi$.

Suppose then that $\{\sigma(x) \pi_i(x) \bmod \varphi\}$ is a basis for $R_n(x)$.

$$\begin{aligned} (\varphi + \tau(x)) &= (\varphi + x) \cdot (\varphi + 1) \\ &= (\varphi + \tau(x)) \cdot \sum_{i=1}^n k_i (\varphi + \sigma(x) \pi_i(x) \bmod \varphi) \\ &= \sum_{i=1}^n k_i (\varphi + \tau(x) \sigma(x) \pi_i(x)) \\ &= \varphi + 0 \end{aligned}$$

which is a contradiction. This proves step 2.

Step 3. We now prove the lemma. If $p \bmod \Phi$ is positive then

$$\begin{aligned}
 p \bmod \Phi &= \sum_{i=1}^n \pi_i(y) \pi_i(x) \\
 \Rightarrow \Phi + p \bmod \Phi &= \Phi + \left(\sum_{i=1}^n \pi_i(y) \pi_i(x) \right) \\
 \Phi + \sigma(x) \sigma(y) (p \bmod \Phi) &= \Phi + \sum_{i=1}^n (\sigma(y) \pi_i(y)) (\sigma(x) \pi_i(x)) \\
 \Phi + \sigma(x) \sigma(y) p(x, y) &= \Phi + \sum_{i=1}^n (\sigma(y) \pi_i(y)) (\sigma(x) \pi_i(x)) \\
 (\sigma(x) \sigma(y) p(x, y)) \bmod \Phi &= \sum_{i=1}^n ((\sigma(y) \pi_i(y)) (\sigma(x) \pi_i(x))) \bmod \Phi \\
 \sigma(x) \sigma(y) p(x, y) \bmod \Phi &= \sum_{i=1}^n \sigma(y) \pi_i(y) \bmod \Phi \sigma(x) \pi_i(x) \bmod \Phi
 \end{aligned}$$

From Lemma 2.1 and step 2 $\sigma(x) \sigma(y) p(x, y) \bmod \Phi$ will be positive of degree $n-1$ in x and y if and only if $\sigma(x) \pi_i(x) \bmod \Phi$ form a basis of $R_n(x)$. This completes the proof of Lemma 2.2.

Lemma 2.3. Let $\lambda_1, \lambda_2, \dots, \lambda_n$ be complex numbers which are distinct and have positive real parts. Then the $n \times n$ matrix $\Lambda_n = \left(\frac{1}{\lambda_i + \bar{\lambda}_j} \right)$

is hermitean ($\Lambda_n = \Lambda_n^*$ where $(*)$ the hermitean adjoint) positive definite.

proof: We first show that if the $m \times m$ matrix $\Lambda_m = \left(\frac{1}{\lambda_i + \bar{\lambda}_j} \right)$ is positive definite so is the $m \times m$ matrix $S_m = \left(\frac{c_i \bar{c}_j}{\lambda_i + \bar{\lambda}_j} \right)$ provided

that each $c_i \neq 0$.

Let S_1 be defined as:

$$S_1 = \begin{bmatrix} c_1 & 0 & 0 \dots & 0 \\ 0 & c_2 & \dots & 0 \\ 0 & 0 & c_3 & \dots \\ \vdots & & & \\ 0 & 0 & \dots & c_1 \end{bmatrix} \Lambda_1 \begin{bmatrix} \bar{c}_1 & 0 & 0 & \dots & 0 \\ 0 & \bar{c}_2 & 0 & \dots & 0 \\ 0 & 0 & \bar{c}_3 & \dots & 0 \\ \vdots & & & & \\ 0 & 0 & 0 & \dots & \bar{c}_1 \end{bmatrix}$$

where $1 \leq l \leq m$. In order for S_m to be positive definite we must have $\det S_l > 0$ for $1 \leq l \leq m$ (Sylvester Criterion).

$$\det S_l = \left(\prod_{i=1}^l c_i \right) \det \Lambda_l \left(\prod_{i=1}^l \bar{c}_i \right)$$

Since $|c_i| \neq 0$ and Λ_m is positive definite we have that

$$\det S_l > 0 \quad \text{for } 1 \leq l \leq m$$

This therefore ensures that if Λ_{n-1} is positive definite so is the matrix

$$K_{n-1} = \left(\frac{1}{\lambda_i + \bar{\lambda}_j} - \frac{\lambda_n + \bar{\lambda}_n}{(\lambda_i + \lambda_n)(\lambda_j + \lambda_n)} \right) = \left| \frac{\left(\frac{\lambda_i - \lambda_n}{\lambda_i + \bar{\lambda}_n} \right) \left(\frac{\bar{\lambda}_j - \lambda_n}{\lambda_j + \bar{\lambda}_n} \right)}{(\lambda_i + \bar{\lambda}_j)} \right|$$

We now prove the Lemma by induction on n .

It is true that $\Lambda_n = \Lambda_n^*$ for all n since

$$\Lambda_n^* = (c_{ij}) = \left(\frac{1}{\lambda_j + \bar{\lambda}_i} \right) = \left(\frac{1}{\lambda_i + \bar{\lambda}_j} \right) = (a_{ij}) = \Lambda_n$$

where $c_{ij} = \bar{a}_{ji}$. It is clear that $\Lambda_1 > 0$ since

$$\frac{1}{\lambda_1 + \bar{\lambda}_1} > 0$$

Suppose that $\Lambda_m > 0$ for all $m \leq n-1$. Applying the Sylvester Criterion on Λ_n we see that all determinants of intermediate minors are positive, by the induction hypothesis. We just have to show that $\det \Lambda_n > 0$. By observing the structure of K_{n-1} and using elementary properties of determinants we now show that

$$\left(\frac{1}{\lambda_n + \bar{\lambda}_n}\right) \det K_{n-1} = \det \Lambda_n.$$

Let

$$b_i = \begin{bmatrix} \frac{1}{\lambda_1 + \bar{\lambda}_i} \\ \frac{1}{\lambda_2 + \bar{\lambda}_i} \\ \vdots \\ \frac{1}{\lambda_{n-1} + \bar{\lambda}_i} \end{bmatrix} \quad c_i = \begin{bmatrix} \frac{-(\lambda_n + \bar{\lambda}_n)}{(\lambda_1 + \bar{\lambda}_n)(\bar{\lambda}_i + \lambda_n)} \\ \frac{-(\lambda_n + \bar{\lambda}_n)}{(\lambda_2 + \bar{\lambda}_n)(\bar{\lambda}_i + \lambda_n)} \\ \vdots \\ \frac{-(\lambda_n + \bar{\lambda}_n)}{(\lambda_{n-1} + \bar{\lambda}_n)(\bar{\lambda}_i + \lambda_n)} \end{bmatrix} \quad a_n = \begin{bmatrix} \frac{1}{\lambda_1 + \bar{\lambda}_n} \\ \frac{1}{\lambda_2 + \bar{\lambda}_n} \\ \vdots \\ \frac{1}{\lambda_{n-1} + \bar{\lambda}_n} \end{bmatrix}$$

Then

$$K_{n-1} = [b_1 + c_1, b_2 + c_2, \dots, b_{n-1} + c_{n-1}]$$

and

$$\begin{aligned} \det K_{n-1} &= \det [b_1, b_2, \dots, b_{n-1}] + \det [c_1, b_2, b_3, \dots, b_{n-1}] \\ &\quad + \dots + [\det b_1, b_2, \dots, b_{n-1}] \\ &= \det [b_1, b_2, \dots, b_{n-1}] \\ &\quad + \frac{\lambda_n + \bar{\lambda}_n}{\lambda_1 + \lambda_n} \det [a_n, b_2, b_3, \dots, b_{n-1}] \\ &\quad + \frac{\lambda_n + \bar{\lambda}_n}{\bar{\lambda}_1 + \lambda_n} \det [b_1, -a_n, b_3, \dots, b_{n-1}] \\ &\quad + \dots \\ &\quad + \frac{\lambda_n + \bar{\lambda}_n}{\lambda_{n-1} + \lambda_n} \det [b_1, b_2, \dots, b_{n-2}, -a_n] \end{aligned}$$

$$\begin{aligned}
 \Rightarrow \frac{1}{\lambda_n + \bar{\lambda}_n} \det K_{n-1} &= \frac{1}{\bar{\lambda}_n + \lambda_n} \det [b_1, b_2, b_3, \dots, b_{n-1}] \\
 &+ \frac{1}{\bar{\lambda}_1 + \lambda_n} \det [-a_n, b_2, \dots, b_{n-1}] \\
 &+ \frac{1}{\bar{\lambda}_2 + \lambda_n} \det [b_1, -a_n, \dots, b_{n-1}] \\
 &+ \dots \\
 &+ \frac{1}{\bar{\lambda}_{n-1} + \lambda_n} \det [b_1, b_2, \dots, b_{n-2}, -a_n] \\
 &= (-1)^{n-1} \frac{1}{\bar{\lambda}_1 + \lambda_n} \det [b_2, b_3, \dots, b_{n-1}, a_n] \\
 &+ (-1)^{n-2} \frac{1}{\bar{\lambda}_2 + \lambda_n} \det [b_1, b_3, \dots, b_{n-1}, a_n] \\
 &+ \dots \\
 &+ \frac{1}{\bar{\lambda}_n + \lambda_n} \det [b_1, b_2, \dots, b_{n-1}]
 \end{aligned}$$

Expanding $\det \Lambda_n$ by the last row gives:

$$\begin{aligned}
 \det \Lambda_n &= (-1)^{n+1} \frac{1}{\bar{\lambda}_1 + \lambda_n} \det [b_2, b_3, \dots, b_{n-1}, a_n] \\
 &+ (-1)^{n+2} \frac{1}{\bar{\lambda}_2 + \lambda_n} \det [b_1, b_3, \dots, b_{n-1}, a_n] \\
 &+ \dots \\
 &+ (-1)^{2n} \frac{1}{\bar{\lambda}_n + \lambda_n} \det [b_1, b_2, \dots, b_n]
 \end{aligned}$$

and therefore $\frac{1}{\bar{\lambda}_n + \lambda_n} \det K_{n-1} = \det \Lambda_n$

Since K_{n-1} is positive definite and λ_n has positive real part we have that

$$\det \Lambda_n > 0$$

and that $\Lambda_n > 0$.

We can also note as a consequence of this lemma that if $\lambda_1 \lambda_2 \dots \lambda_n$ are complex numbers with negative real parts then the matrix $T_n = \left(\frac{-u^2}{\lambda_i + \bar{\lambda}_j} \right)$ where $u \neq 0$ is a real number is also positive definite. This completes the proof of the Lemma.

Lemma 2.4. Let A be an $n \times n$ stability matrix with

$\varphi_2(x) = \det (x - A)$ and let $\Phi = (\varphi_2(x), \varphi_2(y))$. Define

$$\begin{aligned} \varphi_1(x) &= \varphi_2(-x) \\ P_\varphi(x, y) &= \frac{\varphi_2(x)\varphi_2(y) - \varphi_1(x)\varphi_1(y)}{x + y} \end{aligned} \quad (2.1)$$

i) Polynomials $\varphi_1(x), \varphi_2(x)$ are relatively prime. That is there exist $T_u(x), \lambda_u(x)$ in $R[x, y]$ such that

$$T_u(x)\varphi_1(x) + \lambda_u(x)\varphi_2(x) = u \quad (2.3)$$

where u is a unit in $R[x, y]$.

ii) $P_\varphi(x, y)$ is an element of $R[x, y]$.

iii) Let $q_u(x, y) = T_u(x)T_u(y)P_\varphi(x, y) \pmod{\Phi}$ (2.4)

Then $q_u(x, y)$ is positive of degree $n-1$ in both x and y .

Proof of i). Suppose that there exists a $k(x)$ of degree greater than or equal to 1 such that

$$\begin{aligned} k(x) \mid \varphi_1(x) \quad , \quad k(x) \mid \varphi_2(x) \\ \varphi_1(x) = l_1(x)k(x) \quad \quad \varphi_2(x) = l_2(x)k(x) \end{aligned}$$

this implies that $\varphi_1(x)$ and $\varphi_2(x)$ have at least one common root. This cannot happen since $\varphi_1(x) = \varphi_2(-x)$ and $\varphi_2(x)$ is a stability polynomial. Therefore no such $k(x)$ exists and $\varphi_1(x), \varphi_2(x)$ are relatively prime.

Proof of ii).

Let

$$\begin{aligned} \varphi_2(x) &= a_0 + a_1x + \dots + a_nx^n \\ \varphi_1(x) &= a_0 + (-1)a_1x + \dots + (-1)^na_nx^n \end{aligned}$$

Let

$$g(x, y) = \varphi_2(x)\varphi_2(y) = \sum_{jk} g_{jk} x^k y^j$$

$$h(x,y) = \phi_1(x)\phi_1(y) = \sum_{il} h_{il} x^l y^i$$

$$b(x,y) = g(x,y) - h(x,y) = \sum_{st} b_{st} x^t y^s$$

$$\begin{aligned} \text{where } b_{st} &= g_{st} - h_{st} = a_t a_s - (-1)^t a_t \cdot (-1)^s a_s \\ &= a_t a_s - a_t a_s (-1)^{t+s} \end{aligned}$$

Let $s=t=m$ $0 \leq m \leq n$

$$b_{mm} = a_m a_m - (-1)^{2m} a_m a_m = 0 \text{ for all } m.$$

Let $s=m, t=k, 0 \leq m \leq n, 0 \leq k \leq n, m \neq k$

$$\begin{aligned} b_{mk} &= a_m a_k - (-1)^{m+k} a_m a_k = 0 \text{ if } m+k \text{ even} \\ &= 2a_m a_k \text{ if } m+k \text{ odd} \end{aligned}$$

It can be shown by induction that

- i) $x+y \mid x^m + y^m$ if m is odd
- ii) $x+y \mid x^m - y^m$ if m is even.

With this in mind and that $b(x,y)$ is symmetric the division of $b(x,y)$ by $x+y$ is performed by summing the quotients obtained from the divisions of all terms of the form

$$c_{mk} x^k y^m + d_{km} x^m y^k \text{ by } x+y.$$

Proof of iii).

The proof will proceed in three steps.

step 1: Assume that the eigen-values of A $\lambda_1, \lambda_2, \dots, \lambda_n$ are all distinct. Show that $q_u(x,y)$ is of degree $n-1$ in both x and y and that it is positive.

Since $P_\phi(x,y)$ is symmetric so is

$$q_u(x,y) = (T_u(x)T_u(y)P_\phi(x,y)) \text{ mod } \phi$$

On the other hand

$$\begin{aligned}
 (x+y) \cdot (T_u(x)T_u(y)P_\varphi(x,y)) &= T_u(x)T_u(y) [\varphi_2(x)\varphi_2(y) - \varphi_1(x)\varphi_1(y)] \\
 &= T_u(x)T_u(y)\varphi_2(x)\varphi_2(y) - T_u(x)T_u(y)\varphi_1(x)\varphi_1(y) \\
 &= (T_u(x)T_u(y) - \lambda_u(x)\lambda_u(y))\varphi_2(x)\varphi_2(y) \\
 &\quad + u\lambda_u(x)\varphi_2(x) + u\lambda_u(y)\varphi_2(y) - u^2
 \end{aligned}$$

which implies that

$$((x+y) \cdot q_u(x,y)) \text{ mod } \Phi = -u^2 \quad (2.5)$$

In order for this to happen the degree of $q_u(x,y)$ in both x and y which is less than or equal to $n-1$, must actually be $n-1$.

On the other hand

$$(\lambda_i + \bar{\lambda}_j) \cdot q_u(\lambda_i, \bar{\lambda}_j) = -u^2$$

and therefore

$$q_u(\lambda_i, \bar{\lambda}_j) = \frac{-u^2}{\lambda_i + \bar{\lambda}_j}$$

Since we have assumed that the λ_i 's are distinct then $1(\lambda_1), 1(\lambda_2), \dots, 1(\lambda_n)$ by the Van-dermonde determinant theorem must be linearly independent vectors.

We now wish to show that $C(q_u(x,y))$ is positive definite.

Let $z \neq 0$

$$\begin{aligned}
 \bar{z}' \cdot (C(q_u)) z &= \left(\sum_{i=1}^n \bar{k}_i 1'(\bar{\lambda}_i) \right) C(q_u) \sum_{j=1}^n k_j 1(\lambda_j) \\
 &= \sum_{i=1}^n \sum_{j=1}^n \bar{k}_i k_j 1'(\bar{\lambda}_i) C(q_u) 1(\lambda_j) \\
 &= \sum_{i=1}^n \sum_{j=1}^n \bar{k}_i k_j q_u(\lambda_i, \bar{\lambda}_j)
 \end{aligned}$$

$$= |\bar{k}_1, \bar{k}_2 \dots \bar{k}_n| K_n \begin{bmatrix} k_1 \\ k_2 \\ \cdot \\ \cdot \\ k_n \end{bmatrix}$$

with $K_n = (q_u(\lambda_i, \lambda_j)) = \left(\frac{-u^2}{\lambda_i + \lambda_j} \right)$

Since $z \neq 0$ not all of the k_i 's are zero. Lemma 2.3 ensures us that K_n is positive definite and therefore

$$\bar{z}' C(q_u) z > 0 \quad \text{if } z \neq 0$$

making $C(q_u)$ positive definite.

step 2. Since $\phi_1(x)\phi_1(y)T_u(x)T_u(y)P_\phi(x,y) \bmod \Phi = P_\phi(x,y) \bmod \Phi$ we also have $P_\phi(x,y) \bmod \Phi = P_\phi(x,y)$ being positive as a consequence of Lemma 2.2.

step 3. Suppose now that the eigen-values of A are not distinct. Show that $q_u(x,y)$ is positive.

In order to simplify the notation we let

$$\psi(x) = \phi_2(x)$$

$$\psi^+(x) = \phi_1(x)$$

All we have to do in showing that $q_u(x,y)$ is positive is to show that $P_\phi(x,y)$ is positive. Then by Lemma 2.2 it is assured that $q_u(x,y)$ is positive.

We prove that $P_\phi(x,y)$ is positive by showing that it can be expressed as:

$$P_\phi(x,y) = \sum_{i=1}^n \pi_i(x)\pi_i(y)$$

where $\{\pi_i(x)\}$ is a basis for $R_n(x)$.

Write

$$\psi(x) = \psi_1(x)\psi_2(x)\dots\psi_s(x)$$

where each $\psi_i(x)$ has distinct zeros and

$$\psi_s \mid \psi_{s-1} \quad \psi_{s-1} \mid \psi_{s-2} \dots \quad \psi_1 \mid \psi.$$

We then have

$$P_\psi(x,y) = \frac{\psi(x)\psi(y) - \psi^+(x)\psi^+(y)}{x+y}.$$

We know that the degree of $P_\psi(x,y)$ is less than n in both x and y .

$$\text{Let } \eta_j(x) = \psi_1^+(x)\psi_2^+(x) \dots \psi_{j-1}^+(x) \cdot \psi_{j+1}(x) \dots \psi_s(x) \\ \text{for } 1 \leq j \leq s.$$

If we let

$$P_{\psi_j}(x,y) = \frac{\psi_j(x)\psi_j(y) - \psi_j^+(x)\psi_j^+(y)}{x+y}$$

it can be shown that

$$P_\psi(x,y) = \sum_{j=1}^s \eta_j(x)\eta_j(y)P_{\psi_j}(x,y)$$

by substituting in the expression what $\eta_j(x)$ and $P_{\psi_j}(x,y)$ are and cancelling terms.

From step 2 we know that each $P_{\psi_j}(x,y)$ is positive and therefore by Lemma 2.1

$$P_{\psi_j}(x,y) = \sum_{k=1}^{n_j} \pi_{jk}(x)\pi_{jk}(y)$$

where n_j is the degree of $\psi_j(x)$ and $\{\pi_{jk}(x)\}$ are a basis for $R_{n_j}(x)$.

Therefore

$$P_{\varphi}(x, y) = \sum_{j=1}^s \sum_{k=1}^{n_j} \eta_j(x) \pi_{jk}(x) \cdot \eta_j(y) \pi_{jk}(y)$$

We show that $\{\eta_j(x) \pi_{jk}(x)\}$ is a basis for $R_n(x)$.

Suppose that there exists real numbers m_{jk} not all zero such that

$$\sum_{j=1}^s \sum_{k=1}^{n_j} m_{jk} \eta_j(x) \pi_{jk}(x) = 0$$

We can write this as

$$\sum_{j=1}^{s-1} \sum_{k=1}^{n_j} m_{jk} \eta_j(x) \pi_{jk}(x) = \sum_{k=1}^{n_s} m_{sk} \eta_s(x) \pi_{sk}(x)$$

if all m_{sk} $1 \leq k \leq n_s$ are zero we can proceed by writing

$$\sum_{j=1}^{s-2} \sum_{k=1}^{n_j} m_{jk} \eta_j(x) \pi_{jk}(x) = \sum_{k=1}^{n_{s-1}} m_{s-1k} \eta_{s-1}(x) \pi_{s-1k}(x)$$

and continue. Suppose then that $j=s'$ is the first time that we encounter non zero elements in $\{m_{s',k}\}$ $1 \leq k \leq n_{s'}$. Then

$$(*) \quad \sum_{j=1}^{s'-1} \sum_{k=1}^{n_s'} m_{jk} \eta_j(x) \pi_{jk}(x) = \sum_{k=1}^{n_{s'}} m_{s',k} \eta_{s'}(x) \pi_{s',k}(x).$$

Multiply both sides by $b_{s'}(x) = \psi_1(x) \psi_2(x) \dots \psi_{s'-1}(x)$.

The right hand side of (*) can then be written as:

$$p(x) \cdot \varphi(x) \quad \text{for some } p(x)$$

and

$$b_{s'}(x) \sum_{k=1}^{n_{s'}} m_{s',k} \eta_{s'}(x) \pi_{s',k}(x) = p(x) \cdot \varphi(x)$$

if $p(x) = 0$ we then have that

$$\eta_{s'}(x) \cdot b_{s'}(x) \cdot \sum_{k=1}^{n_{s'}} m_{s',k} \pi_{s',k}(x) = 0$$

But since $\{\pi_{s',k}(x)\}$ are a basis for $R_{n_{s'}}(x)$ this would imply that $m_{s',k} = 0, 1 \leq k \leq n_{s'}$, contradicting the assumption that $j=s'$ is the first such j for which not all $m_{s',k}=0$. Suppose then that $p(x) \neq 0$.

This would mean that

$$\varphi(x) \mid b_{s'}(x) \sum_{k=1}^{n_{s'}} m_{s',k} \eta_{s'}(x) \pi_{s',k}(x)$$

or that

$$\psi_{s'}(x) \mid (\psi_1^+(x) \cdot \psi_2^+(x) \dots \psi_{s'-1}^+(x)) \sum_{k=1}^{n_{s'}} m_{s',k} \pi_{s',k}(x).$$

But $\psi_{s'}(x)$ and $\psi_1^+(x) \psi_2^+(x) \dots \psi_{s'-1}^+(x)$ are relatively prime therefore

$$\psi_{s'}(x) \mid \sum_{k=1}^{n_{s'}} m_{s',k} \pi_{s',k}(x).$$

Since the degree of $\sum_{k=1}^{n_{s'}} m_{s',k} \pi_{s',k}(x)$ is less than $n_{s'}$

this can only happen if $\sum_{k=1}^{n_{s'}} m_{s',k} \pi_{s',k}(x) = 0$ or

equivalently, when $m_{s',k} = 0$ for $1 \leq k \leq n_{s'}$.

This again leads to a contradiction since we have assumed that $j=s'$ is the first time we have $m_{s',k}, 1 \leq k \leq n_{s'}$, not all being zero.

The process is repeated until all m_{jk} are shown to be zero contradicting our original assumption.

Therefore $\{\eta_j(x) \pi_{jk}(x)\}$ is a basis for $R_n(x)$, and $P_\varphi(x,y)$ is positive. Since $n=n_1+n_2+\dots+n_s$ we also have that $P_\varphi(x,y)$ is of degree $n-1$ in both x and y .

This completes the proof of step 3 and the proof of Lemma 2.4.

REFERENCES

1. T. M. Athay "Numerical Analysis of the Lyapunov Equation With Application to Interconnected Power Systems", M.S. Thesis M.I.T. June 1976.
2. T. M. Athay and N. R. Sandell, "An Iterative Decoupling Solution Method For Large Scale Lyapunov Equations".
3. R. Bellman, Introduction To Matrix Analysis, McGraw-Hill, New York, 1960.
4. R. W. Brockett, Finite Dimensional Linear Systems, Wiley, New York, 1970.
5. W. S. Brown, "On Euclid's Algorithm and the Computation of Polynomial Greatest Common Divisors", A.C.M. Journal, Vol. 18, No.4, October 1971.
6. W. S. Brown and J. F. Traub "On Euclid's Algorithm and the Theory of Subresultants", A.C.M. Journal, vol. 18, No. 4, October 1971.
7. I. N. Herstein, Topics in Algebra, Xerox, Lexington, Mass., 1964.
8. N. Jacobson, Basic Algebra 1, W.H. Freeman, San Francisco, 1974.
9. R. E. Kalman, "Algebraic Characterization of Polynomials Whose Zeroes Lie in Certain Algebraic Domains", Proc N.A.S., Mathematics, Vol. 64, No. 3, November 1969.

10. D. L. Kleinman, "On An Iterative Technique for Riccati Equation Computations", IEEE Trans A.C., vol. AC-13, No. 1, February 1968.
11. D. L. Kleinman, "An Easy Way to Stabilize a Linear Constant System", IEEE Trans A.C., vol. AC-15, No. 6, December 1970.
12. D. E. Knuth, The Art of Computer Programming Vol.2: Semi-numerical Algorithms, Addison-Wesley, Reading, Mass., 1969.
13. MACSYMA Reference Manual, R. Bogen et al., Project MAC, M.I.T., Cambridge, Mass., 1975.
14. L. Mirsky, An Introduction To Linear Algebra, Oxford University Press, 1961.