

AD-A045 188

ARMY MEDICAL INTELLIGENCE AND INFORMATION AGENCY WAS--ETC F/6 15/5  
FOLLOW ON TESTING OF VACUUM MATTRESSES (NACHERPROBUNG VON VAKUU--ETC(U)  
AUG 77 GURN

UNCLASSIFIED

USAMIIA-K-8358-D

NL

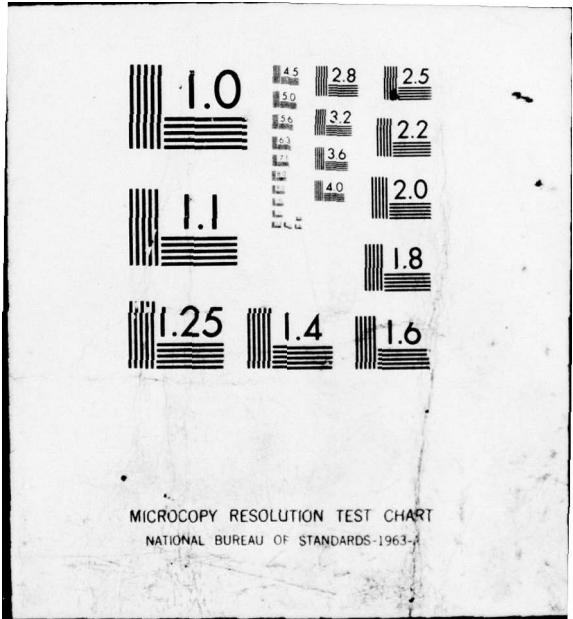
| OF |  
AD  
A045 188



END  
DATE  
FILMED

11-77

DDC



MICROCOPY RESOLUTION TEST CHART  
NATIONAL BUREAU OF STANDARDS-1963-A



DEPARTMENT OF THE ARMY  
 U.S. ARMY MEDICAL INTELLIGENCE AND INFORMATION AGENCY  
 WASHINGTON, D.C. 20314

AD A 045188

Number: 14 USAMIIA TRANSLATION  
 USAMIIA-K-8358-D

Date Completed: 11 31 Aug 77 12 12p.

Language: German

Geographic Area: 2

English Title: FOLLOW ON TESTING OF VACUUM MATTRESSES

Foreign Title: (Nacherprobung von Vakuum-Matratzen)

Author: 10 Dr/Gurn

Source Document:

Pages Translated: 9 pp

Publisher: 21 Trans. of report from Academy for Medical Service and Sanitation of the Bundeswehr (West Germany) 9p

Date/Place Publication: 24 March 1976, Munich

Distribution Statement:

Approved for public release;  
 distribution unlimited

DDC  
 RECEIVED  
 OCT 17 1977  
 A

AD No. \_\_\_\_\_  
 DDC FILE COPY

409112

*[Handwritten signature]*

Academy for Medical Service and  
Sanitation of the Bundeswehr  
Department for Studies and Science  
Study Group Medical Technology/  
Medical Supplies  
Ref. No. 90-65-15-25

8000 Munich 40  
24 March 1976  
Telephone: 3870 2624  
P.O.B. 4000 35  
Sch/V

/1

To:

Federal Office for Military Technology  
and Procurement (BWB)- VA IV 2

Am Rhein 2-4  
5400 Coblenz

For Information:

To:

Medical Office of the Bundeswehr  
- III 2 -

Platanenweg 29  
5300 Bonn-Beuel 1

| ACCESSION for                   |   |
|---------------------------------|---|
| NTIS                            | White Section <input checked="" type="checkbox"/> |
| DCC                             | Buff Section <input type="checkbox"/>             |
| UNANNOUNCED                     | <input type="checkbox"/>                          |
| JUSTIFICATION                   |   |
| BY                              |   |
| DISTRIBUTION/AVAILABILITY CODES |   |
| Dist.                           | MAIL ROOM SPECIAL                                 |

Subject: Followon Testing of Vacuum Mattresses

- References:
1. Academy for Medical Service and Sanitation of the Bundeswehr, Department for Studies and Science, Study Group for Medical Technology/Medical Supplies Ref. No. 90-65-15-25 of 16 July 1975
  2. BWB - BA IV 2 Ref. No. 90-65-15 of 11 August 1975
  3. Medical Office of the Bundeswehr III 2, Ref. No. 90-65-15 of 19 August 1975

Inclosure: 1

On the basis of the reports of references 1 and 2, followon test of the modified vacuum mattresses was arranged by the Medical Office of the Bundeswehr.

Three modified models were made available for the followon testing, by the BWB. These involved mattresses from the firms:

Laerdal, Model 2a (modified)

Firn, Model 3a (modified)

Soehngen, Model 4a (modified)

(Inclosure, Figures 1-3)

The model numbers were used as found in test report of reference 1. For appraisal and final discussions in Murnau, the participants were invited as with the first testing program.

Participants:

|                              |               |   |
|------------------------------|---------------|---|
| Medical Officer Field Forces | Dr. Grigoleit | Divisional Medical Officer,<br>First Mountain Division  |
| LTC (Pharmacist)             | Steinlechner  | Divisional Pharmacist, First<br>Mountain Division   |
| LTC (MC)                     | Dr. Miesel    | Chief, Air Force Medical<br>Squadron LTG 61   |
| Sergeant 1st Class           | Klein         | Air Rescueman, Air Force<br>Medical Squadron LTG 61   |
| Program Director             | Dr. Probst    | Medical Director, Accident<br>Clinic, Murnau  |
|                              | Dr. Ruidisch  | Accident Clinic, Murnau   |
|                              | Mr. Fischer   | BWB - BA IV 2   |
| LTC (Pharmacist)             | Schell        | Academy for Medical Service<br>and Sanitation of the Bundes-<br>wehr, Department for Studies<br>and Science, Study Group Medi-<br>cal Technology/Medical Supplies |
| LTC                          | Dengler       | Academy for Medical Service<br>and Sanitation of the Bundes-<br>wehr, Department for Studies<br>and Science, Study Group Medi-<br>cal Technology/Medical Supplies |

Results of the followon testing:

/2

M4a (Soehngen) (Inclosure, Figure 3)

The disturbing grips which had previously been either too narrow or too stiff (reference 1) on models 4 and 5 were modified into an encircling line as requested.

This vacuum mattress has nevertheless too little moldability owing to its box shape and the stiffer material and it tends to form creases. For these reasons, already mentioned in reference 1, model M4a is rejected.

M2a (Laerdal) (Inclosure, Figure 1)

This mattress was demonstrated as a modified model. In accordance with the requirement, the mattress was made wider and, instead of the stretcher loops, stretcher grips were worked into an encircling strip.

Advantages:

Width adequate,

Easier to carry with the new grips,

Good edge stability,  
Cover easy to change and wash.

Disadvantages:

Carrying grips on the encircling strap which is fastened not on the mattress but on the cover can easily be ripped; transverse straps would still in some cases be necessary,

Material and type of grips difficult to grasp,

Exchangeable cover can easily rip in case of damages,

Exchangeable cover cancels formation of creases in mattress,

Valves for deflating and inflating (in case of repairs) are not clearly designated (Figure 1a),

Filling is somewhat too thick.

The mattress M2a (Laerdal) is only recommended with restrictions. It is inferior to Model 3a.

M3a (Firn) (Inclosure, Figures 2, 4 and 5)

[Handwritten note: Selected for the Bundeswehr]

The model was partially modified in accordance with the requirements (reference 1, Inclosure, paragraph 2.27).

The valve was shifted to the side. It is used for deflating and inflating. The filler material was only slightly increased. Two further handgrips were additionally installed in the encircling line not quite at hipheight.

Advantages of Model M3a:

Simple, clear model,

Handgrips can be shifted as required on the encircling line and be increased; even without handgrips (garden hose segment), the line can be grasped at many points,

Good moldability at edges,

Easy to roll up owing to flat edge or to pile up in extended form or store rolled up.

Disadvantages:

Valve still too large and not shifted enough to the side,

Color orange on one side good for use in accidents but nevertheless to be rejected for use in the field.

In addition to the properties described here (advantages and disadvantages), see reference 1.

/3

In addition, tests were carried out using the model demonstrated to carry a casualty with mattress on the stretcher in various medical evacuation resources at especially unfavorable places. There resulted no difficulties.

Mattress Model 3a (Firn) was recommended for acceptance.

The model should nevertheless have a shorter valve which is still to be shifted about 5 cm further on the outer side. It should not have sharp edges but be possibly protected with an undetachable cap. The filler material should not be less than a full width but slightly greater. Likewise, carrying grips should be installed at head and foot, accordingly a total of 10 carrying grips (two each at the head, foot, head-shoulder height, hip-height and at the height of the leg below the knee).

Since the carrying grips can easily be shifted, the arrangement can be changed at any time.

A medium or dark gray is suggested as color for the mattress. Insofar as luminous and warning paints are required (SAR helicopters, emergency medical vehicles), a recognition factor is possible by sheets, covers, etc.

The pump should be able to be attached to the mattress using two straps not impeding the function of the mattress during storage and transport when empty.

#### Deflating Pumps

Two pumps were demonstrated (Figure 6):

- a. Soehngen type, modified model
- b. Laerdal type, Stiga, quicker, Art. No. 41-5111.

Owing to the simplicity, lesser size, good suction performance and possibility to deflate manually or with the feet, preference was given to Model b (Figure 7).

During the test without special load, the hollow plastic piston rod still broke (Figure 7/1). In addition, it was determined that the grip section of the pump is only butt-glued to the cylinder and was sealed with adhesive tape (Figure 7/2).

What is involved here is a relatively cheap finished product which is too susceptible for field conditions.

Basic acceptance is given a pump of the type of Model b. The pump should nevertheless be delivered from durable material without any special weak points.

The pump does not have to be suited for inflation for repairs. This can be done with compressed air or oxygen.

Summary

Model 4a (Soehngen) is rejected.

Model 2a (Laerdal) is only worth recommending with significant limitations.

Model 3a (Firn) is recommended for acceptance although a few slight modifications are still necessary.

No fully developed model of the pumps has yet been demonstrated. The type demonstrated by the firm Laerdal corresponds to some extent to the requirements in the type and form but not in material.

For

[Signature]

(Dr. Gurn)  
Colonel (MC)

Inclosure to letter

Anlage

zu Schreiben SanAkBw ASW  
StudGrp SanTSanMat

Az.: 90-65-15-25 vom 24.03.76

Ref. No.: of



1

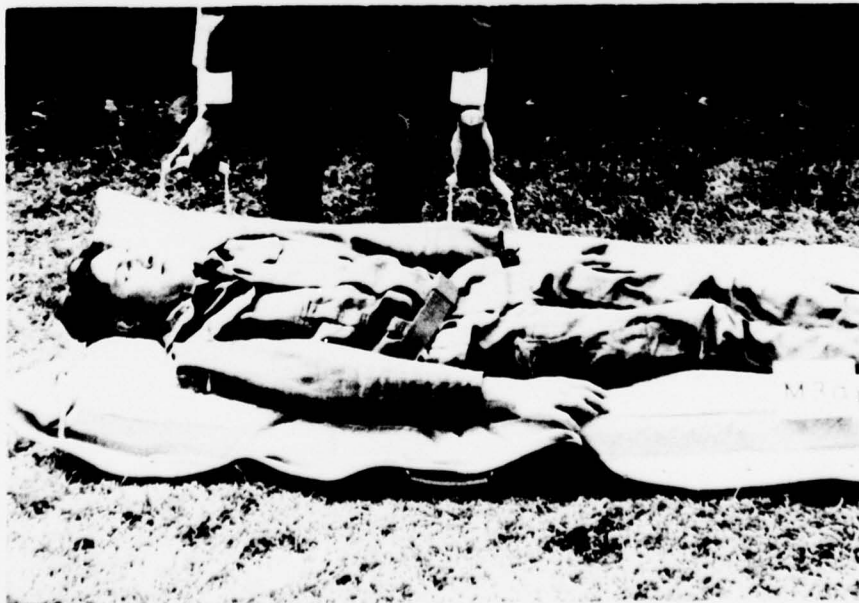


1a

2

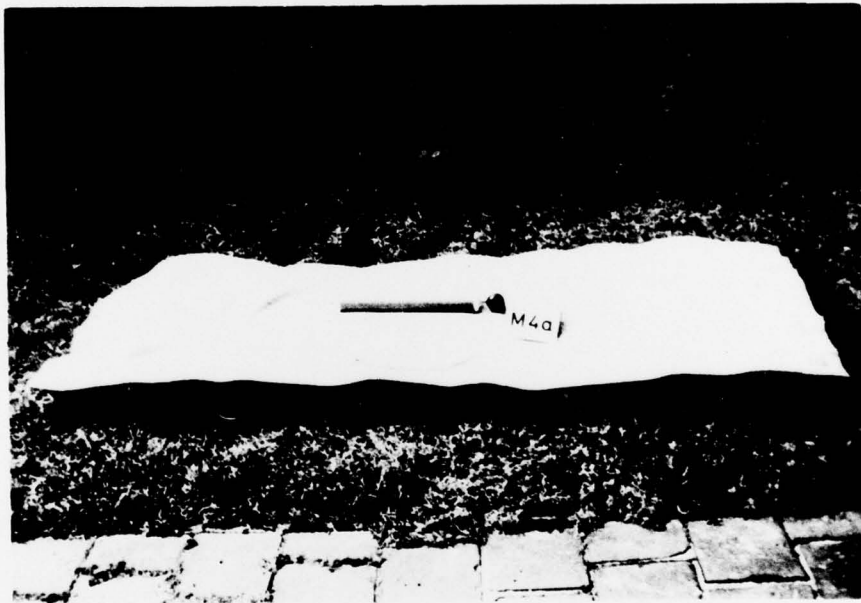


2a



2b

- 3 -



3

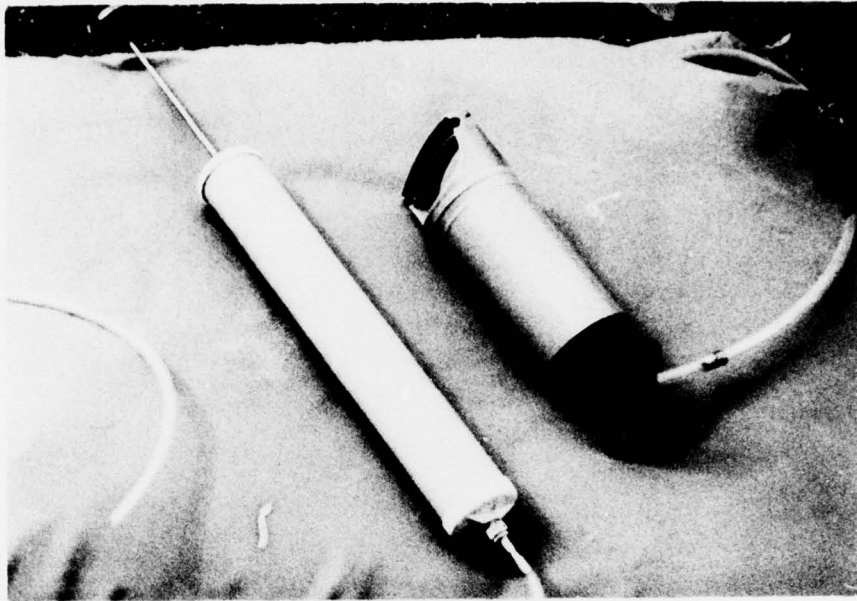
- 8 -



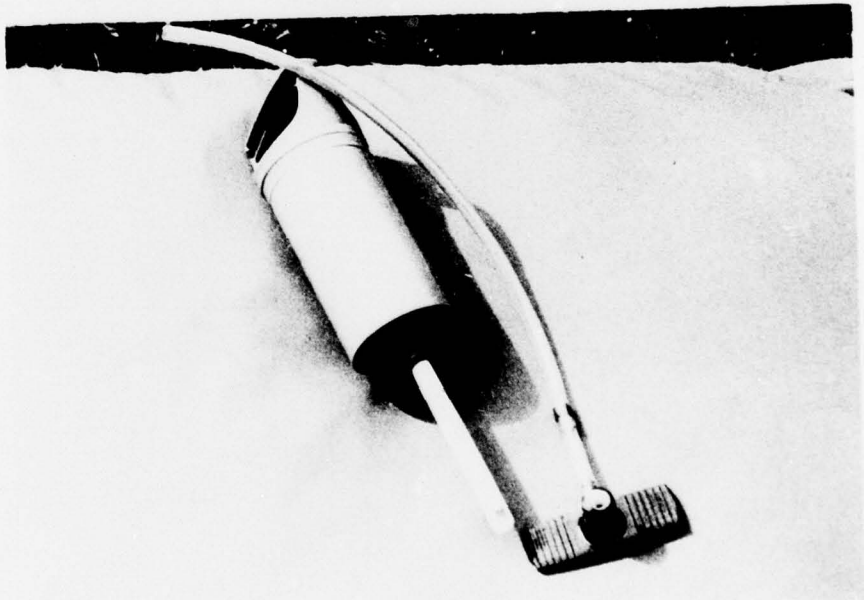
4



5



6



7/1



7/2