

AD-A045 836

DAVID W TAYLOR NAVAL SHIP RESEARCH AND DEVELOPMENT CE--ETC F/G 9/2
COMPUTER CENTER LIBRARIES/PROFIL (PROCEDURES), (U)
SEP 77 D V SOMMER

UNCLASSIFIED

CMLD-77-16

NL

1 of 2
ADA045836



DDC FILE COPY

COMPUTER CENTER LIBRARIES/PROFIL (PROCEDURES)

AD A 045836

CMLD-77-16

12

DAVID W. TAYLOR NAVAL SHIP RESEARCH AND DEVELOPMENT CENTER



Bethesda, Md. 2084

COMPUTER CENTER LIBRARIES/PROFIL (PROCEDURES)

by

David V. Sommer

DDC
RECEIVED
NOV 2 1977
F

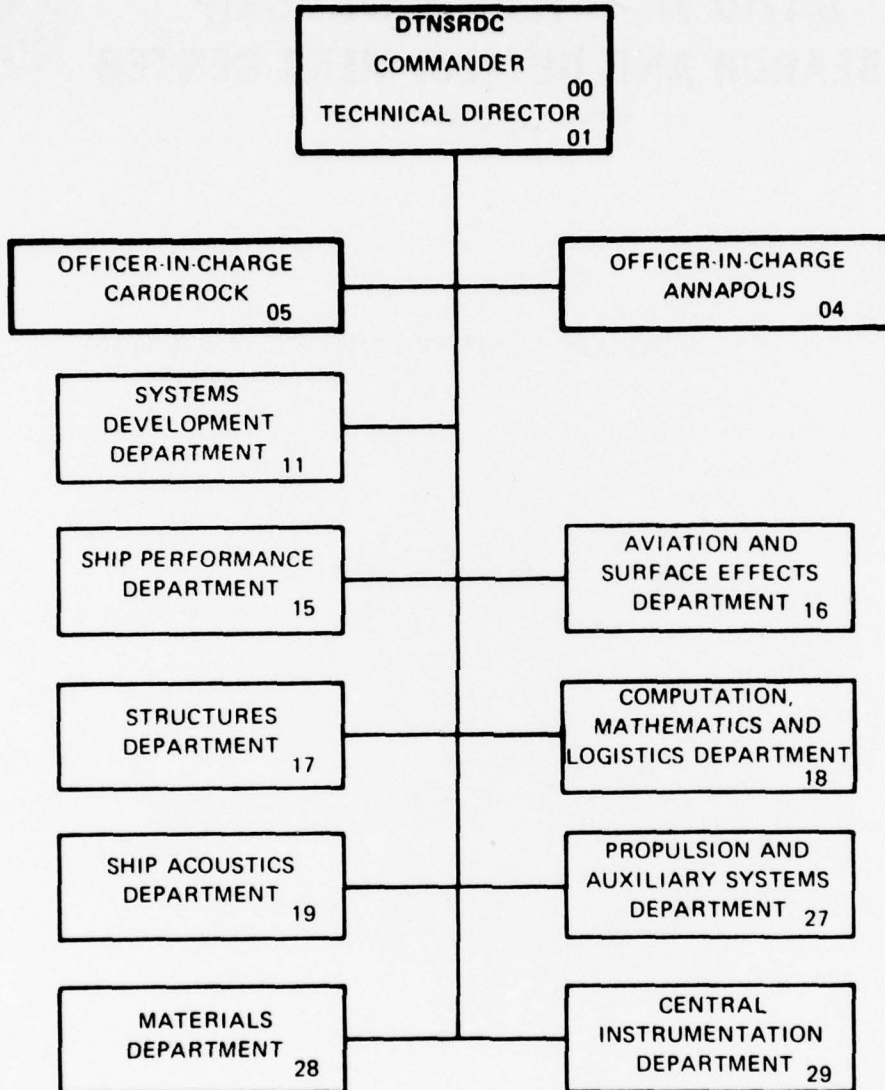
DISTRIBUTION STATEMENT A
Approved for public release;
Distribution Unlimited

Computation, Mathematics and
Logistics Department

September 1977

CMLD-77-16

MAJOR DTNSRDC ORGANIZATIONAL COMPONENTS



REPORT DOCUMENTATION PAGE		READ INSTRUCTIONS BEFORE COMPLETING FORM
1. REPORT NUMBER 14 CMLD-77-16	2. GOVT ACCESSION NO.	3. RECIPIENT'S CATALOG NUMBER
4. TITLE (and Subtitle) 6 COMPUTER CENTER LIBRARIES/PROFIL (PROCEDURES)	5. TYPE OF REPORT & PERIOD COVERED	
7. AUTHOR(s) 10 David V. Sommer	6. PERFORMING ORG. REPORT NUMBER	
9. PERFORMING ORGANIZATION NAME AND ADDRESS David W. Taylor Naval Ship R&D Center Bethesda, Maryland 20084	8. CONTRACT OR GRANT NUMBER(s)	
11. CONTROLLING OFFICE NAME AND ADDRESS Computation, Mathematics & Logistics Dept. Computer Facilities Div. (189)	10. PROGRAM ELEMENT, PROJECT, TASK AREA & WORK UNIT NUMBERS	11. REPORT DATE Sep 1977
14. MONITORING AGENCY NAME & ADDRESS (if different from Controlling Office) 12 97 p.	12. NUMBER OF PAGES 97	15. SECURITY CLASS. (of this report) Unclassified
16. DISTRIBUTION STATEMENT (of this Report) APPROVED FOR PUBLIC RELEASE: DISTRIBUTION UNLIMITED		
17. DISTRIBUTION STATEMENT (of the abstract entered in Block 20, if different from Report)		
18. SUPPLEMENTARY NOTES		
19. KEY WORDS (Continue on reverse side if necessary and identify by block number) Catalogued Procedures Software Documentation Computers Functional Categories Library File Control Cards		
20. ABSTRACT (Continue on reverse side if necessary and identify by block number) Computer Center Libraries/Profil (Procedures), CCLIB/P, is a reference manual which describes all of the catalogued procedures (sets of control cards to accomplish a task) in library 'PROFIL'. These procedures include document/source program/procedure file maintenance, program compilation/loading/execution, permanent file audit/rename, special copy functions. CCLIB/P lists the procedures by functional category and alphabetically with a descriptive title. All machine-readable documents detailing the use of these procedures are included.		

DDC
RECEIVED
NOV 2 1977
F.

406 847

JP

DAVID W. TAYLOR
NAVAL SHIP RESEARCH AND DEVELOPMENT CENTER
BETHESDA, MARYLAND 20084

*
*
* COMPUTER CENTER LIBRARIES / PROFIL *
* (PROCEDURES) *
*

BY
DAVID V SOMMER
USER SERVICES BRANCH
CODE 1892

ACCESSION for	Write Section <input checked="" type="checkbox"/>
NTIS	B ff Section <input type="checkbox"/>
DDC	<input type="checkbox"/>
UNANNOUNCED	
JUSTIFICATION	
BY	DISTRIBUTION/VALUABILITY CODES
BY	SPECIAL
A	

COMPUTATION, MATHEMATICS AND LOGISTICS DEPARTMENT
DEPARTMENTAL REPORT

AUG 1977

CMLD-77-16

..

THROUGH REVISION 0 (AUG 1977)

..

TABLE OF CONTENTS

1	INTRODUCTION	
	HOW TO USE THIS MANUAL	1-1
	LIBRARY PROFIL	1-1
	EXECUTING A PROCEDURE	1-1
	FUNCTIONAL CATEGORIES	1-2
	LIST OF PROCEDURES BY CATEGORY	1-5
	DESCRIPTIVE TITLES	1-7
2	PROCEDURE DOCUMENTATION	

***** INTRODUCTION *****

THE COMPUTER CENTER MAKES AVAILABLE, IN ADDITION TO THE NOS/BE OPERATING SYSTEM, A WIDE VARIETY OF BOTH SCIENTIFIC AND UTILITY PROGRAMS, SUBPROGRAMS AND CATALOGUED PROCEDURES. MOST OF THE ROUTINES ARE MAINTAINED IN LIBRARIES ON PERMANENT FILES AND MAY BE INVOKED BY THE APPROPRIATE (LOADER) CONTROL CARDS. A FEW PROGRAMS ARE AVAILABLE AS INDEPENDENT PERMANENT FILES.

THE CCLIB-SERIES OF MANUALS CONTAINS THE FOLLOWING, WHICH DESCRIBE THE CONTENTS OF THE VARIOUS LIBRARIES MAINTAINED BY THE COMPUTER CENTER:

CCLIB	- COMPUTER CENTER LIBRARIES	CMLD-77-12
CCLIB/N	- COMPUTER CENTER LIBRARIES/NSRDC (SUBPROGRAMS)	CMLD-77-15
CCLIB/P	- COMPUTER CENTER LIBRARIES/PROFIL (PROCEDURES)	CMLD-77-16
CCLIB/U	- COMPUTER CENTER LIBRARIES/UTILITY (PROGRAMS)	CMLD-77-17
CCLIB/M	- COMPUTER CENTER LIBRARIES/MNSRDC (PROGRAMS)	

THIS MANUAL, CCLIB/P, IS A REFERENCE MANUAL WHICH DESCRIBES ALL THE CATALOGUED PROCEDURES IN LIBRARY 'PROFIL'.

*** HOW TO USE THIS MANUAL ***

THE PROCEDURES ARE CLASSIFIED IN ONE OR MORE FUNCTIONAL CATEGORIES (SEE PAGE 1-2 FOR A LIST OF CATEGORIES). THEY ARE LISTED, BEGINNING ON PAGE 1-5, UNDER THE VARIOUS CATEGORIES. THE INDIVIDUAL PROCEDURES ARE LISTED, WITH DESCRIPTIVE TITLE, BEGINNING ON PAGE 1-7. CHAPTER 2 CONTAINS ALL CURRENTLY AVAILABLE MACHINE-READABLE DOCUMENTS DESCRIBING THE USE OF PROCEDURES IN LIBRARY 'PROFIL'.

*** LIBRARY PROFIL ***

A CATALOGUED PROCEDURE IS A SET OF CONTROL CARDS WHICH ACCOMPLISH A TASK. LIBRARY 'PROFIL' CONTAINS MANY DTNSRDC WRITTEN AND/OR SUPPORTED PROCEDURES.

*** EXECUTING A PROCEDURE ***

MOST OF THE PROCEDURES MAY BE EXECUTED BY:

BEGIN,<PROCNAME>,,<PARAMETERS>.

THE INDIVIDUAL DOCUMENTS DESCRIBE THE <PARAMETERS>, IF ANY, AND THE METHOD OF EXECUTION.

*** FUNCTIONAL CATEGORIES ***

THE FOLLOWING FUNCTIONAL CATEGORIES ARE USED AT DTNSRDC. THOSE CATEGORIES PRECEDED BY AN ASTERISK (*) ARE LOCAL DTNSRDC CATEGORIES. THE OTHER ARE FROM THE VIM (CDC USERS GROUP) LIST.

- A0 ARITHMETIC ROUTINES
- A1 REAL NUMBERS
- A2 COMPLEX NUMBERS
- A3 DECIMAL
- A4 I/O ROUTINES

- B0 ELEMENTARY FUNCTIONS
- B1 TRIGONOMETRIC
- B2 HYPERBOLIC
- B3 EXPONENTIAL AND LOGARITHMIC
- B4 ROOTS AND POWERS

- C0 POLYNOMIALS AND SPECIAL FUNCTIONS
- C1 EVALUATION OF POLYNOMIALS
- C2 ROOTS OF POLYNOMIALS
- C3 EVALUATION OF SPECIAL FUNCTIONS (NON-STATISTICAL)
- C4 SIMULTANEOUS NON-LINEAR ALGEBRAIC EQUATIONS
- C5 SIMULTANEOUS TRANSCENDENTAL EQUATIONS
- * C6 ROOTS OF FUNCTIONS

- D0 OPERATIONS ON FUNCTIONS AND SOLUTIONS OF DIFFERENTIAL EQUATIONS
- D1 NUMERICAL INTEGRATION
- D2 NUMERICAL SOLUTIONS OF ORDINARY DIFFERENTIAL EQUATIONS
- D3 NUMERICAL SOLUTIONS OF PARTIAL DIFFERENTIAL EQUATIONS
- D4 NUMERICAL DIFFERENTIATION

- E0 INTERPOLATION AND APPROXIMATIONS
- E1 TABLE LOOK-UP AND INTERPOLATION
- E2 CURVE FITTING
- E3 SMOOTHING
- E4 MINIMIZING OR MAXIMIZING A FUNCTION

- F0 OPERATIONS ON MATRICES, VECTORS & SIMULTANEOUS LINEAR EQUATIONS
- F1 VECTOR AND MATRIX OPERATIONS
- F2 EIGENVALUES AND EIGENVECTORS
- F3 DETERMINANTS
- F4 SIMULTANEOUS LINEAR EQUATIONS

- G0 STATISTICAL ANALYSIS AND PROBABILITY
- G1 DATA REDUCTION (COMMON STATISTICAL PARAMETERS)
- G2 CORRELATION AND REGRESSION ANALYSIS
- G3 SEQUENTIAL ANALYSIS
- G4 ANALYSIS OF VARIANCE
- G5 TIME SERIES
- G6 SPECIAL FUNCTIONS (INCLUDES RANDOM NUMBERS AND PDF'S)
- * G7 MULTIVARIATE ANALYSIS AND SCALE STATISTICS
- * G8 NON-PARAMETRIC METHODS AND STATISTICAL TESTS
- * G9 STATISTICAL INFERENCE

H0 OPERATIONS RESEARCH TECHNIQUES, SIMULATION & MANAGEMENT SCIENCE
H1 LINEAR PROGRAMMING
H2 NON-LINEAR PROGRAMMING
H3 TRANSPORTATION AND NETWORK CODES
H4 SIMULATION MODELING
H5 SIMULATION MODELS
H6 CRITICAL PATH PROGRAMS
H8 AUXILIARY PROGRAMS
H9 COMBINED

I0 INPUT
I1 BINARY
I2 OCTAL
I3 DECIMAL
I4 BCD (HOLLERITH)
I9 COMPOSITE

J0 OUTPUT
J1 BINARY
J2 OCTAL
J3 DECIMAL
J4 BCD (HOLLERITH)
J5 PLOTTING
J7 ANALOG
J9 COMPOSITE

K0 INTERNAL INFORMATION TRANSFER
K1 EXTERNAL-TO-EXTERNAL
K2 INTERNAL-TO-INTERNAL (RELOCATION)
K3 DISK
K4 TAPE
K5 DIRECT DATA DEVICES

L0 EXECUTIVE ROUTINES
L1 ASSEMBLY
L2 COMPILING
L3 MONITORING
L4 PREPROCESSING
L5 DISASSEMBLY AND DERELATIVIZING
L6 RELATIVIZING
L7 COMPUTER LANGUAGE TRANSLATORS

M0 DATA HANDLING
M1 SORTING
M2 CONVERSION AND/OR SCALING
M3 MERGING
M4 CHARACTER MANIPULATION
M5 SEARCHING, SEEKING, LOCATING
M6 REPORT GENERATORS
M9 COMPOSITE

N0 DEBUGGING
N1 TRACING AND TRAPPING
N2 DUMPING
N3 MEMORY VERIFICATION AND SEARCHING
N4 BREAKPOINT PRINTING

00 SIMULATION OF COMPUTERS AND DATA PROCESSORS (INTERPRETERS)
01 OFF-LINE EQUIPMENT (LISTERS, REPRODUCERS, ETC.)
03 COMPUTERS
04 PSEUDO-COMPUTERS
05 SOFTWARE SIMULATION OF PERIPHERALS
09 COMPOSITE

P0 DIAGNOSTICS (HARDWARE MALFUNCTION)

Q0 SERVICE OR HOUSEKEEPING, PROGRAMMING AIDS
Q1 CLEAR/RESET
Q2 CHECKSUM ACCUMULATION AND CORRECTION
Q3 REWIND, TAPE MARK, LOAD CARDS, LOAD TAPE PROGRAMS, ETC.
Q4 INTERNAL HOUSEKEEPING, SAVE, RESTORE, ETC.
Q5 REPORT GENERATOR SUBROUTINES
Q6 PROGRAM DOCUMENTATION: FLOW CHARTS, DOCUMENT, STANDARDIZATION
Q7 PROGRAM LIBRARY UTILITIES

R0 LOGIC AND SYMBOLIC
R1 FORMAL LOGIC
R2 SYMBOL MANIPULATION
R3 LIST AND STRING PROCESSING

S0 INFORMATION RETRIEVAL

T0 APPLICATIONS AND APPLICATION-ORIENTED PROGRAMS
T1 PHYSICS (INCLUDING NUCLEAR)
T2 CHEMISTRY
T3 OTHER PHYSICAL SCIENCES (GEOLOGY, ASTRONOMY, ETC.)
T4 ENGINEERING
T5 BUSINESS DATA PROCESSING
T6 MANUFACTURING (NON-DATA) PROCESSING AND PROCESS CONTROL
T7 MATHEMATICS AND APPLIED MATHEMATICS
T8 SOCIAL AND BEHAVIORAL SCIENCES AND PSYCHOLOGY
T9 BIOLOGICAL SCIENCES
T10 REGIONAL SCIENCES (GEOGRAPHY, URBAN PLANNING)
T11 COMPUTER ASSISTED INSTRUCTION

U0 LINGUISTICS AND LANGUAGES

V0 GENERAL PURPOSE UTILITY SUBROUTINES
V1 RANDOM NUMBER GENERATORS
V2 COMBINATORIAL GENERATORS: PERMUTATIONS, COMBINATIONS & SUBSETS
* V3 STANDARD AND SPECIAL PROBLEMS

X0 DATA REDUCTION
X1 RE-FORMATTING, DECOMMUTATION, ERROR DIAGNOSIS
X2 EDITING
X3 CALIBRATION
X4 EVALUATION
X5 ANALYSIS (TIME-SERIES ANALYSIS)
X6 SIMULATION (GENERATE TEST DATA FOR DATA REDUCTION SYSTEM)

Y0 INSTALLATION MODIFICATION
Y1 INSTALLATION MODIFICATION LIBRARY
Y2 NEWPL TAPE OF INSTALLATION MODIFICATIONS

Z0 ALL OTHERS

*** LIST OF PROCEDURES BY CATEGORY ***

THE PUBLIC-ACCESS PROCEDURES ARE LISTED BELOW UNDER THEIR FUNCTIONAL CATEGORIES. AN ALPHABETICAL LIST, WITH A BRIEF DESCRIPTION OF EACH PROCEDURE BEGINS ON PAGE 1-7.

J1	BINARY CV29					
J4	BCD (HOLLERITH) LINE6	LINE3	PM			
J5	PLOTTING CALC3D					
K1	EXTERNAL-TO-EXTERNAL COPYS	RECAD	RECDELE	RECGET	RECREPL	
K3	DISK COPYLIB CPINDEX	SELDUMP TRANPAK	UPDADD UPDDELE	UPDGET UPDGETS	UPDGETT UPDREPL	
K4	TAPE COPYBLK	SELLOAD				
L2	COMPILING RUNBAS	RUNFTN	RUNMNF	RUNSEQ	RUNTS	
M1	SORTING AUDIT					
M2	CONVERSION AND/OR SCALING CV29					
O1	OFF-LINE EQUIPMENT CCIRM CCLIB	CCRM CV29	DOCDOC PRODOC	RECDOC TIOBITS	UPDDOC	
Q0	SERVICE OR HOUSEKEEPING, BDT	MFX	PROGRAMMING AIDS NORERUN	SEND	WHATLIB	
Q3	FILE MANIPULATION S2K260	S2000				
Q4	INTERNAL HOUSEKEEPING, SAVE, RESTORE, ETC. RENAMAC	SELDUMP	SELLOAD			
Q6	PROGRAM DOCUMENTATION: FLOW CHARTS, DOCUMENT, STANDARDIZATION DOCADD DOCDELE	DOCFILE DOCGET	DOCLIST DOCREPL	DOCTAPE PGMTAPE	STRUCT	

Q7 PROGRAM LIBRARY UTILITIES

ANYLIB	LIBSET2	PROALL	PROLIST	UPDGET	UTILITY
ANYPRO	MNSRJC	PRODELE	PRONAM	UPDGETS	
COPYLIB	MYPRO	PROGET	PROREPL	UPDGETT	
CPINDEX	NOGO	PROGRAM	UPDADD	UPDLIST	
LIBSET1	PROADD	PROHDR	UPDDELE	UPDREPL	

S0 INFORMATION RETRIEVAL

AUDIT	GRIPE	VENUS
-------	-------	-------

*** DESCRIPTIVE TITLES ***

THE PUBLIC-ACCESS PROCEDURES ARE LISTED ALPHABETICALLY BELOW.

ANYLIB EXECUTE A PROGRAM ON ANY EDITLIB USER LIBRARY (HAVING A PFN OF 1-7 CHARACTERS)

ANYPRO EXECUTE A PROCEDURE ON ANY CATALOGUED PROCEDURE FILE (HAVING A PFN OF 1-7 CHARACTERS)

AUDIT SORTED USER AUDIT

CALC3D THREE-D PROCEDURE FOR CALCOMP 763, 936, 1700 PLOTTERS

CCIRM PRINT ONE COPY OF COMPUTER CENTER INTRODUCTORY REFERENCE MANUAL

CCLIB PRINT ONE COPY OF CCLIB, CCLIB/M, CCLIB/N, CCLIB/P, OR CCLIB/U MANUAL

CCRM PRINT COPIES OF THE COMPUTER CENTER REFERENCE MANUAL

COPYBLK REBLOCK STRANGER TAPES TO SCOPE STANDARD FILES (BOTH UNBLOCKED CARD AND PRINT LINE IMAGE TAPES AND BLOCKED STRANGER TAPES)

COPYLIB CONDENSE (AND SORT) AN EDITLIB USER LIBRARY PRESERVING AL, FL, FLO VALUES. BINDEXT AND .LISTBIN LISTS ARE PROVIDED.

COPYS ATTACH, EXECUTE AND RETURN THE RIQSCOPYS PROGRAM

CPINDEX CONVERT SEQUENTIAL PROCEDURE FILE TO RANDOM

GV29 CONVERT TO 029 PUNCH CODE

DOCADD ADD ONE DOCUMENT TO A DOCUMENTATION FILE

DOCDELE DELETE ONE DOCUMENT FROM A DOCUMENTATION FILE

DOCDOC LIST DOCUMENTATION FOR PROCEDURES DOCADD, DOCDELE, DOCDOC, DOCFILE, DOCGET, DOCLIST, DOCREPL

DOCFILE ATTACH A DOCUMENTATION FILE

DOCGET GET (EXTRACT) SPECIFIED DOCUMENT FROM A DOCUMENTATION FILE

DOCLIST LIST DOCUMENT NAMES (ON *DECK) CARDS IN A DOCUMENTATION FILE

DOCREPL REPLACE ONE DOCUMENT IN A DOCUMENTATION FILE

DOCTAPE EXTRACT A DOCUMENT FROM TAPE

GRIFE ALLOW USER TO MAKE GRIPES OR SUGGESTIONS DIRECTLY TO THE COMPUTER

LIBSET1/2 CREATE SIMPLE ABSOLUTE USING ONE/TWO EDITLIB LIBRARY(IES)
LINE8/6 SET PRINT FILE TO 8/6 LINES PER INCH
MFX TELL USER THE MAINFRAME ON WHICH HE IS RUNNING
MNSRDC EXECUTE A PROGRAM ON EDITLIB USER LIBRARY 'MNSRDC'
MYPRO EXECUTE A PROCEDURE ON FILE 'PROFIL' CATALOGED UNDER ANY ID
NOGO CREATE SIMPLE ABSOLUTE FROM RELOCATABLE
NORERUN INSURE THAT A BATCH JOB CANNOT BE RERUN BY OPERATOR TYPE-IN
PGMTAPE EXTRACT A SOURCE PROGRAM FROM TAPE
PM CREATE CERTAIN PRINT MESSAGE (PM) RECORDS
PROADD ADD ONE PROCEDURE TO A SEQUENTIAL PROCEDURE FILE
PROALL LIST PROCEDURE NAMES, PROCEDURE HEADERS AND THE PROCEDURES IN
A SEQUENTIAL PROCEDURE FILE (COMBINES PRONAM, PROHDR AND
PROLIST)
PRODELE DELETE ONE PROCEDURE FROM A SEQUENTIAL PROCEDURE FILE
PRODOC LIST DOCUMENTATION FOR PROCEDURES PROADD, PROALL, PRODELE,
PRODOC, PROGET, PROHDR, PROLIST, PRONAM, PROREPL
PROGET GET (EXTRACT) ONE PROCEDURE FROM A SEQUENTIAL PROCEDURE FILE
PROGRAM EXECUTE A CATALOGED PROGRAM (NOT IN A LIBRARY)
PROHDR LIST PROCEDURE HEADERS IN A PROCEDURE FILE
PROLIST LIST PROCEDURE(S) IN A SEQUENTIAL PROCEDURE FILE
PRONAM LIST NAMES OF PROCEDURES IN A SEQUENTIAL PROCEDURE FILE
PROREPL REPLACE ONE PROCEDURE IN A SEQUENTIAL PROCEDURE FILE
RECADD ADD ONE OR MORE LOGICAL RECORDS TO A FILE
RECDELE DELETE ONE OR MORE LOGICAL RECORDS FROM A FILE
RECDOC LIST DOCUMENTATION FOR PROCEDURES RECADD, RECDELE, RECDOC,
RECGET, RECREPL
RECGET EXTRACT ONE OR MORE LOGICAL RECORDS FROM A FILE
RECREPL REPLACE ONE OR MORE LOGICAL RECORDS IN A FILE
RENAMAG RENAME AC FIELD ON PERMANENT FILES
RUNBAS COMPILE AND EXECUTE BASIC PROGRAM (SIMILAR TO EDITOR RUN,BAS
FOR USE OUTSIDE EDITOR)

RUNFTN COMPILE AND EXECUTE FTN PROGRAM (SIMILAR TO EDITOR RUN,FTN
FOR USE OUTSIDE EDITOR)

RUNMNF COMPILE AND EXECUTE MNF PROGRAM

RUNSEQ COMPILE AND EXECUTE FTN,SEQ PROGRAM (SOURCE PROGRAM IN
SEQUENCED FORMAT - TIME-SHARING OPTION)

RUNTS COMPILE AND EXECUTE FTN,TS PROGRAM (TIME-SHARING OPTION)

SELDUMP CREATE BACKUP DUMP TAPE OF USER PERMANENT FILES OF AN ACCOUNT
NUMBER

SELLOAD RESTORE SELECTED ROUTINES FROM A BACKUP DUMPF TAPE

SEND SEND MESSAGES TO AN INTERCOM USER WHO IS NOT LOGGED IN; LIST
MESSAGES

STRUCT GENERATE CROSS-REFERENCE LISTS AND TREE STRUCTURE FROM BINARY
RELOCATABLE OBJECT FILE

S2K260 ATTACH FILES FOR S2000 (VERSION 2.60) NATURAL LANGUAGE,
FORTRAN, OR COBOL PROCEDURAL LANGUAGE INTERFACE

S2000 ATTACH OR RETURN FILES FOR S2000 NATURAL LANGUAGE, FTN OR
COBOL PROCEDURAL LANGUAGE INTERFACE FROM PROPER DEVICE

TIDBITS LIST FILE OF TIDBITS (HINTS ON IMPROVED COMPUTER USAGE)

TRANPAK COPY CONTENTS FROM ONE DEVICE SET TO ANOTHER FOR BACKUP

UPDADD ADD ONE DECK TO AN UPDATE LIBRARY

UPDDELE DELETE ONE DECK FROM AN UPDATE LIBRARY

UPDDOC LIST DOCUMENTATION FOR PROCEDURES UPDADD, UPDDELE, UPDDOC,
UPDGET, UPDLIST, UPDREPL

UPDGET EXTRACT ONE DECK FROM AN UPDATE LIBRARY (UPDATE,C) AND,
OPTIONALLY, ADD EDITOR SEQUENCING

UPDGETS EXTRACT ONE DECK FROM AN UPDATE LIBRARY (UPDATE,S) AND,
OPTIONALLY, ADD EDITOR SEQUENCING

UPDGETT EXTRACT ONE DECK FROM AN UPDATE LIBRARY (UPDATE,T) AND,
OPTIONALLY, ADD EDITOR SEQUENCING

UPDLIST LIST DECK/COMDECK NAMES IN UPDATE LIBRARY WITH COUNT OF
RECORDS IN EACH DECK/COMDECK

UPDREPL REPLACE ONE DECK IN AN UPDATE LIBRARY

UTILITY EXECUTE A PROGRAM ON LIBRARY 'UTILITY'

VENUS ATTACH AND EXECUTE ONE OF THE VENUS RETRIEVAL PROGRAMS

WHATLIB LIST LIBRARIES SPECIFIED IN LAST 'LIBRARY' COMMAND

***** PROCEDUPE DOCUMENTATION *****

THIS CHAPTER CONTAINS THE DOCUMENTATION FOR ALL PROCEDURES IN PUBLIC-ACCESS PROCEDUPE FILE 'PROFIL'.

INDIVIDUAL DOCUMENTS MAY BE PRINTED USING:

BEGIN,UTILITY,,PROGDOC,PROFIL,,<PROCNAME>,OUTPUT.

WHERE <PROCNAME> IS THE DESIRED DOCUMENT.

SEVERAL DOCUMENTS MAY BE PRINTED AT ONE TIME USING:

```
JOBNAME.  
CHARGE,.....  
BEGIN,UTILITY,,MANYDOC,PROFIL.  
' 7/8/9      EOR  
<PROCNAME1>  
<PROCNAME2>  
...  
<PROCNAMEN>  
" 6/7/8/9    EOF
```

PROCEDURE 'ANYLIB'

PURPOSE

EXECUTE A PROGRAM ON ANY EDITLIB USER LIBRARY

FUNCTIONAL CATEGORY: Q7

LOCATION OF PROCEDURE

SYSTEM PUBLIC ACCESS PROCEDURE FILE

USAGE

BEGIN, ANYLIB, , LIB, ID, PROG, PARAMS.

DESCRIPTION OF PARAMETERS

LIB - 1-7 CHARACTER LIBRARY PFN

ID - ID IT IS CATALOGED UNDER.

(DEFAULT: SYSTEM PUBLIC ACCESS ID)

USE 0 (ZERO) IF FILE IS ALREADY ATTACHED

AND IS TO REMAIN ATTACHED AT THE END OF THE

PROCEDURE.

PROG - PROGRAM TO BE EXECUTED

PARAMS - UP TO 13 PARAMETERS FOR 'PROG'

DEFAULT BEGIN STATEMENT

NO MEANINGFUL DEFAULT VALUES

MAX FL: DEPENDS ON PROGRAM BEING EXECUTED

REMARKS

NONE

AUTHOR

DAVID V SOMMER - DTNSRDC CODE 1892.2

DATE WRITTEN: 1975

DATE(S) REVISED

PROCEDURE 'ANYPRO'

PURPOSE

EXECUTE A PROCEDURE ON ANY CATALOGUED PROCEDURE FILE
(HAVING ANY 1-7 CHARACTER PFN)

FUNCTIONAL CATEGORY: Q7

LOCATION OF PROCEDURE

SYSTEM PUBLIC ACCESS PROCEDURE FILE

USAGE

BEGIN, ANYPRO, , PFN, ID, PRO, PARAMS.

DESCRIPTION OF PARAMETERS

PFN - 1-7 CHARACTER PERMANENT FILE NAME OF PROCEDURE
FILE

ID - ID UNDER WHICH IT IS CATALOGED

PRO - PROCEDURE NAME

PARAMS - UP TO 17 POSITIONAL PARAMETERS FOR PROCEDURE 'PRO'

DEFAULT BEGIN STATEMENT

NO MEANINGFUL DEFAULT VALUES

MAX FL: DEPENDS UPON PROCEDURE BEING EXECUTED

REMARKS

NONE

AUTHOR

DAVID V SOMMER - DTNSRDC CODE 1892.2

DATE WRITTEN: 07/21/76

DATE(S) REVISED

PROCEDURE 'AUDIT'

PURPOSE

SORTED USER AUDIT

FUNCTIONAL CATEGORY: S0 M1

LOCATION OF PROCEDURE

SYSTEM PUBLIC ACCESS PROCEDURE FILE

USAGE

BEGIN,AUDIT,KEYWORD-PARAMETERS.

DESCRIPTION OF PARAMETERS

THE FOLLOWING KEYWORDS ARE SUPPORTED:

AI= - TYPE OF AUDIT DESIRED
AI=F - FULL AUDIT (2 LINES PER FILE)
AI=I - INTERCOM AUDIT (72-COLUMNS)
AI=P - PARTIAL AUDIT (1 LINE PER FILE)
(DEFAULT)
AI=S - SHORT AUDIT (PRUS, CY, PFN ONLY)
AC= - ACCOUNT NUMBER FOR THE AUDIT
ID= - ID TO BE AUDITED
LF= - LISTABLE OUTPUT

DEFAULT BEGIN STATEMENT

BEGIN,AUDIT,AI=P,LF=OUTPUT,ID=<CHARGE CARD OR LOGIN ID>.

MAX FL: 350008

REMARKS

USE AUDIT BY ID BECAUSE IT IS MUCH FASTER AND MUCH CHEAPER.

UP TO 1000 PFN'S MAY BE AUDITED. IF MORE THAN 1000
REQUIRED, CALL USER SERVICES.

EXAMPLE

BEGIN,AUDIT,AI=I,ID=CXXX.

AUTHOR

DAVID V SOMMER - DTNSRDC CODE 1892.2

DATE WRITTEN: EARLY 1975

DATE(S) REVISED

06/29/76 - ADD 'MAX' CAPABILITY
03/03/77 - REMOVE 'MAX' CAPABILITY (SORTING PROGRAM
USED WILL HANDLE 1000 PFNS)

PROCEDURE 'BOT'

PURPOSE

FUNCTIONAL CATEGORY: Q0

LOCATION OF PROCEDURE
SYSTEM PUBLIC ACCESS PROCEDURE FILE

USAGE
BEGIN,BOT,,OUTPUT.

DESCRIPTION OF PARAMETER
OUTPUT - LISTABLE OUTPUT

DEFAULT BEGIN STATEMENT
BEGIN,BOT,,OUTPUT.

MAX FL: 230009

REMARKS
NONE

AUTHOR
DAVID V SOMMER - DTNSRDC CODE 1892.2

DATE WRITTEN: EARLY 1975

DATE(S) REVISED

PROCEDURE 'CALC3D'

PURPOSE

THREE-D PROCEDURE FOR CALCOMP 763, 936, 1700 PLOTTERS

FUNCTIONAL CATEGORY: J5

LOCATION OF PROCEDURE

SYSTEM PUBLIC ACCESS PROCEDURE FILE

USAGE

BEGIN,CALC3D,,MAC,VSNI,VSNI2,TID,INPUT,RERUN.

DESCRIPTION OF PARAMETERS

MAC - ONE OF --
763 - CALCOMP 763 PLOTTER
936 - CALCOMP 936 PLOTTER (DEFAULT)
170 - CALCOMP PLOTTER ON 1700

VSNI - TAPE DIEBOLD OR SLOT NUMBER
(6 CHARACTERS OR LESS)
(UNLABELLED TAPE FOR MAC=763;
LABELLED TAPE FOR MAC=936)

VSNI2 - EXTERNAL STICKER LABEL
(SLOT TAPES ONLY)

TID - 1700 TERMINAL ID FOR ROUTING PLOTTER OUTPUT
(USED ONLY WHEN MAC=170)
(DEFAULT: AF)

INPUT - FILE CONTAINING CONTROL CARDS

RERUN - THIS PARAMETER FACILITATES SAME DAY RERUN USING
THE SAME TAPE.
OMITTED OR 'W' - FIRST/ONLY TIME THIS TAPE IS USED
TODAY
'R' - RERUN ON SAME DAY
THIS PARAMETER HAS MEANING ONLY FOR MAC=936.
HOWEVER, IF SPECIFIED, IT MUST BE A VALID ENTRY.

DEFAULT BEGIN STATEMENT

BEGIN,CALC3D,,936,*,*,AF,INPUT,W.

* - NO DEFAULTS FOR THESE PARAMETERS

MAX FL:

REMARKS

A 936 JOB WILL CREATE A LABELLED TAPE WITH A RETENTION PERIOD OF ONE DAY. SUBSEQUENT RERUN(S) ON THE SAME DAY WILL CAUSE THE JOB TO TERMINATE BECAUSE OF UNEXPIRED LABEL. SPECIFYING RERUN=R WILL CAUSE THE CURRENT LABEL TO BE CHECKED RATHER THAN BE RE-WRITTEN. THE FIRST OR ONLY RUN SHOULD OMIT THE RERUN PARAMETER SO THAT THE CURRENT DATE WILL BE WRITTEN ON THE LABEL.

EXAMPLES

BEGIN,CALC3D,,936,CA9999.

(USE LABELLED TAPE CA9999 FOR CALCOMP 936 PLOTTER)

BEGIN,CALC3D,,763,SLOT01,MYTAPE.

(USE UNLABELLED TAPE IN SLOT 01 HAVING EXTERNAL
LABEL 'MYTAPE' FOR CALCOMP 763 PLOTTER)

BEGIN,CALC3D,,170,TID=AG.

(PLOT FOR CALCOMP PLOTTER AT 1700 TERMINAL 'AG')

AUTHOR

SHARON E GOOD - DTNSRDC CODE 1892.1

DATE WRITTEN: EARLY 1975

DATE(S) REVISED

07/23/76

10/07/76 - MAKE TRANSPARENT TO USER

PROCEDURE 'CCIRM'

PURPOSE

PRINT ONE COPY OF COMPUTER CENTER INTRODUCTORY REFERENCE
MANUAL (CCIRM)

FUNCTIONAL CATEGORY: 01

LOCATION OF PROCEDURE

SYSTEM PUBLIC ACCESS PROCEDURE FILE

USAGE

BEGIN,CCIRM,,OUTPUT.

DESCRIPTION OF PARAMETER

OUTPUT - LISTABLE OUTPUT

DEFAULT BEGIN STATEMENT

BEGIN,CCIRM,,OUTPUT.

MAX FL: 6000B

REMARKS

OUTPUT SHOULD BE PRINTED ON NARROW PAPER.

CENTRAL SITE:

BEGIN,CCIRM.

ROUTE,OUTPUT,TID=C,FC=1T.

1700 AND OTHER TERMINALS SUPPORTING 'PM' MESSAGES:

BEGIN,PM,,1T.

BEGIN,CCIRM.

BEGIN,PM.

ROUTE,OUTPUT,TID=**. ** - TERMINAL-ID

AUTHOR

DAVID V SOMMER - DTNSRDC CODE 1892.2

DATE WRITTEN: 06/27/77

DATE(S) REVISED

PROCEDURE 'CCLIB'

PURPOSE

PRINT ONE COPY OF CCLIB, CCLIB/M, CCLIB/N, CCLIB/P, OR
CCLIB/U MANUAL

FUNCTIONAL CATEGORY: 01

LOCATION OF PROCEDURE

SYSTEM PUBLIC ACCESS PROCEDURE FILE

USAGE

BEGIN,CCLIB,,WHICH,OUTPUT.

DESCRIPTION OF PARAMETERS

WHICH - WHICH MANUAL TO PRINT

OMITTED - CCLIB

M - CCLIB/M

N - CCLIB/N

P - CCLIB/P

U - CCLIB/U

OUTPUT - LISTABLE OUTPUT

DEFAULT BEGIN STATEMENT

BEGIN,CCLIB,,,OUTPUT.

MAX FL: 32000B

REMARKS

NONE

ERROR MESSAGES

FILE NOT CATALOGED, SN=SYSSET

PF ABORT

USER-SPECIFIED VALUE FOR 'WHICH' IS INVALID

INVALID OPTION (<WHICH>)

MUST BE OMITTED OR ONE OF M/N/P/U

USER-SPECIFIED VALUE FOR 'WHICH' IS INVALID

AUTHOR

DAVID V SOMMER - DTNSROC CODE 1892.2

DATE WRITTEN: 08/30/77

DATE(S) REVISED

PROCEDURE 'CCRM'

PURPOSE

PRINT COPIES OF THE COMPUTER CENTER REFERENCE MANUAL

FUNCTIONAL CATEGORY: 01

LOCATION OF PROCEDURE

SYSTEM PUBLIC ACCESS PROCEDURE FILE

USAGE

BEGIN,CCRM,,COPIES,OUTPUT,PM,<CHAPTERS>.

DESCRIPTION OF PARAMETERS

COPIES - NUMBER OF COPIES TO PRINT (DEFAULT: 1)
OUTPUT - LISTABLE OUTPUT
PM - IF OMITTED, NO PM MESSAGES AT START AND END OF
OUTPUT FILE (DEFAULT).
IF ANYTHING ELSE,
'PM 1-PART NARROW UNLINED PAPER'
IS INSERTED AT THE START, AND
'PM RESTORE PRINTER'
FOLLOWS THE END OF THE OUTPUT FILE.
<CHAPTERS> - ONE OF THE FOLLOWING:
ALL - PRINT ENTIRE MANUAL (DEFAULT)
ONE OR MORE CHAPTER NUMBERS, SEPARATED BY
COMMAS (0-15, WHERE 0 IS THE TABLE OF CONTENTS
AND 15 IS THE INDEX)

DEFAULT BEGIN STATEMENT

BEGIN,CCRM,,1,OUTPUT,,ALL.

MAX FL: 200008

REMARKS

NONE

EXAMPLES

TO PRINT 1 COPY OF THE ENTIRE MANUAL:
BEGIN,CCRM.

TO PRINT 1 COPY OF CHAPTERS 2, 3, 6, 10:
BEGIN,CCRM,,,,,2,3,6,10.

TO PRINT 2 COPIES OF CHAPTER 4 (FORTRAN):
BEGIN,CCRM,,2,,,4.

TO PRINT 1 COPY OF THE MANUAL ON NARROW, UNLINED
PAPER AT REMOTE TERMINAL AE:
BEGIN,CCRM,,,OUT,PM.
ROUTE,OUT,DC=PR,TID=AE,FID=*

AUTHOR

DAVID V SOMMER - DTNSRDC CODE 1892.2

DATE WRITTEN: 09/75

DATE(S) REVISED

03/02/77 - IF OUTPUT IS MAGNETIC TAPE, IT IS CODED.

08/22/77

2-10

CCRM - 1 OF 1

PROCEDURE 'COMLIST'

PURPOSE

PREPARE COM (MICROFICHE) TAPE FROM A PRINT FILE (NO TITLING ON FICHE)

FUNCTIONAL CATEGORY: K4

LOCATION OF PROCEDURE

SYSTEM PUBLIC ACCESS PROCEDURE FILE

USAGE

BEGIN,COMLIST,,MYFILE, ID,VSN,SLOT.

DESCRIPTION OF PARAMETERS

MYFILE - FILE TO BE COPIED (1-7 CHARACTERS)
ID - OMITTED - MYFILE IS LOCAL FILE NAME
SPECIFIED - MYFILE IS PERMANENT FILE NAME
(FILE WILL BE ATTACHED AND RETURNED)
VSN - DIEBOLD TAPE NUMBER (IF SLOT OMITTED)
EXTERNAL STICKER LABEL (IF SLOT SPECIFIED)
SLOT - SLOT NUMBER (SLOTNN)
(OMIT FOR DIEBOLD TAPE)

DEFAULT BEGIN STATEMENT

NO MEANINGFUL DEFAULT VALUES

MAX FL: 210008

REMARKS

MAY BE USED IN BATCH MODE ONLY (NOT IN INTERACTIVE MODE).

USES ONE 9-TRACK TAPE (MUST RUN ON 6700).

SPECIFY COM CARD 'CLC4' WHEN HAVING TAPE PROCESSED ON COM UNIT.

ERROR MESSAGES

BATCH ONLY, CANNOT RUN FROM INTERCOM
SELF-EXPLANATORY

FILE NAME REQUIRED

USER SPECIFIED MYFILE=. MUST HAVE A FILE NAME.

VSN REQUIRED

SELF-EXPLANATORY

EXAMPLES

1. COMPILE A PROGRAM TO BE PUT ONTO MICROFICHE. USE DIEBOLD TAPE.

```
JOBNAME,NT1,STMFA.  
CHARGE,.....  
ATTACH,IN,MYSOURCE,ID=XXXX.  
FTN,I=IN,OPT=1,R=3,L=OUT.  
REWIND,OUT.  
BEGIN,COMLIST,,OUT,,CA9999.  
" 6/7/8/9 EOF
```

2. PUT A PREVIOUSLY CATALOGED FILE ON MICROFICHE. USE A SLOT TAPE.

```
JOBNAME,NT1,STMFA.  
CHARGE,.....  
BEGIN,COMLIST,,MYLIST,XXXX,MYTAPE,SLOT88.  
" 6/7/8/9 EOF
```

AUTHOR

BARBARA J DAVIS - DTNSRDC CODE 1892.1
DAVID V SOMMER - DTNSRDC CODE 1892.2

DATE WRITTEN: 07/15/77

DATE(S) REVISED

PROCEDURE 'COPYBLK'

PURPOSE

REBLOCK STRANGER TAPES TO SCOPE STANDARD FILES (BOTH UNBLOCKED CARD AND PRINT LINE IMAGE TAPES AND BLOCKED STRANGER TAPES)

FUNCTIONAL CATEGORY: K4

LOCATION OF PROCEDURE

SYSTEM PUBLIC ACCESS PROCEDURE FILE

USAGE

BEGIN,COPYBLK,,RB,MRL,MBL,TAPE1,TAPE2,REW1,REW2.

DESCRIPTION OF PARAMETERS

RB - NUMBER OF RECORDS PER BLOCK
IF OMITTED OR 1 - COPY UNBLOCKED STRANGER FILES (CARD AND PRINT LINE IMAGES)
OTHER - COPY BLOCKED STRANGER FILES

MRL - MAXIMUM RECORD LENGTH (RB NOT EQ 1)
(NUMBER OF 6-BIT CHARACTERS)

MBL - MAXIMUM BLOCK LENGTH (RB NOT EQ 1)
(TOTAL NUMBER OF CHARACTERS PER BLOCK (MUST BE RB TIMES MRL))

TAPE1 - INPUT STRANGER FILE (SEE REMARKS)

TAPE2 - OUTPUT SCOPE STANDARD FILE

REW1 - OMITTED - REWIND TAPE1 AFTER USE
N - DO NOT REWIND TAPE1 AFTER USE

REW2 - OMITTED - REWIND TAPE2 AFTER USE
N - DO NOT REWIND TAPE2 AFTER USE

DEFAULT BEGIN STATEMENT

IF RB OMITTED OR 1:
BEGIN,COPYBLK,,1,150,150,TAPE1,TAPE2.
IF RB NOT EQ 1:
BEGIN,COPYBLK,,RB,80,*,TAPE1,TAPE2.
(* - USER MUST SUPPLY)

MAX FL: 70000B

REMARKS

A 9-TRACK TAPE MUST BE COPIED TO DISK BEFORE USING COPYBLK.

EXAMPLES

BEGIN,COPYBLK.
(COPY UNBLOCKED FILES)

BEGIN,COPYBLK,,10,MBL=800.
(COPY BLOCKED CARD-IMAGE FILES, 10 RECORDS PER BLOCK. NOTE THAT USER MUST SUPPLY MBL.)

AUTHOR

SHARON E GOOD - DTNSRDC CODE 1892.1

DATE WRITTEN: EARLY 1975

DATE(S) REVISED

10/07/76 - REVERT(ABORT) ADDED
11/22/76 - REW1,REW2 ADDED

11/22/76

2-13

COPYBLK - 1 OF 1

PROCEDURE 'COPYLIB'

PURPOSE

CONDENSE (AND SORT) AN EDITLIB USER LIBRARY PRESERVING AL, FL, FLO VALUES. BINDEX AND LISTBIN LISTS ARE PROVIDED.

FUNCTIONAL CATEGORY: K3 Q7

LOCATION OF PROCEDURE

SYSTEM PUBLIC ACCESS PROCEDURE FILE

USAGE

BEGIN,COPYLIB,,LIB,ID,OUTPUT,SORT,NOEDLST,AC,PW1,PW2.

DESCRIPTION OF PARAMETERS

LIB - PFN OF LIBRARY (1-7 CHARACTERS)
ID - ID UNDER WHICH LIBRARY IS CATALOGED
(DEFAULT: SYSTEM PUBLIC ACCESS ID)
OUTPUT - LISTABLE OUTPUT
SORT - OMITTED OR 'SORT' - SORT ROUTINE NAMES
(NEW LIBRARY MAY BE REORDERED)
ANYTHING ELSE - DO NOT SORT
NOEDLST - OMITTED - DO NOT PRINT A COPY OF EDITLIB
OUTPUT
ANYTHING ELSE - PRINT EDITLIB OUTPUT
AC - JOB ORDER NUMBER FOR CATALOG OF NEW LIBRARY
(MAY BE OMITTED)
PW1,PW2 - PASSWORDS FOR CATALOG OF NEW LIBRARY

DEFAULT BEGIN STATEMENT

NO MEANINGFUL DEFAULT VALUES

MAX FL: 46000B+

REMARKS

THE LOWEST CYCLE OF LIB IS PURGED, IF POSSIBLE. AT LEAST 2 CYCLES ARE ALWAYS RETAINED.

OCCASIONALLY, EDITLIB WILL LOSE A PORTION OF A DECK DURING THE COPY PROCESS. THE DIRECTORY WILL SHOW THAT THE DECK IS THERE, BUT EXECUTING IT WILL CAUSE A LOADER ERROR. FOR THIS REASON, THE 'LISTBIN' LIST IS PROVIDED. A QUICK EXAMINATION OF THIS LIST WILL SHOW ANY TROUBLE SPOTS. IN ADDITION TO THE LINES FOR EACH DECK IN THE LIBRARY, THERE SHOULD BE SIX (6) OTHER LINES (PRECEDED BY RIGHT BRACKET (})). NORMALLY, THEY ARE AT THE END OF THE LIBRARY, BUT MAY BE SPLIT FOUR (4) AT THE START AND TWO (2) AT THE END OF THE LIBRARY. ONE OR MORE '}' LINES ANYWHERE ELSE IN THE LISTBIN LISTING INDICATES WHERE THE BAD DECK IS. THE QUICKEST WAY TO

RESTORE THE 'MISSING' DECK IS AS FOLLOWS:

```
ATTACH,MYLIB,ID=CXXX,PW=....      (GET CURRENT CYCLE  
                                  WITH EXTEND PERMISSION)  
ATTACH,LC,MYLIB,ID=CXXX,LC=1.     (GET LOWEST CYCLE)  
BEGIN,UTILITY,,GETOBJ,LC,ROUTINE,FILE,LIB. (EXTRACT  
                                           ROUTINE)
```

```
EDITLIB.  
EXTEND,MYLIB.  
* 7/8/9      EOR  
LIBRARY(MYLIB,OLD)  
REPLACE(*,FILE)  
FINISH.  
ENDRUN.  
* 6/7/8/9   EOF
```

AUTHOR
DAVID W SOMMER - DTNSRDC CODE 1892.2

DATE WRITTEN: 11/18/76

DATE(S) REVISED

PROCEDURE 'COPYS'

PURPOSE

ATTACH, EXECUTE AND RETURN THE RIQSCOPYS PROGRAM

FUNCTIONAL CATEGORY: K1

LOCATION OF PROCEDURE

SYSTEM PUBLIC ACCESS PROCEDURE FILE

USAGE

BEGIN,COPYS,,COPY,INPUT,OUTPUT,N.

DESCRIPTION OF PARAMETERS

COPY - ONE OF THE 'COPYS(COPY' OPTIONS
(SEE COMPUTER CENTER REFERENCE MANUAL, P 10-21.1)
INPUT - INPUT FILE
OUTPUT - OUTPUT FILE
N - NUMBER OF TIMES OR FILES

DEFAULT BEGIN STATEMENT

BEGIN,COPYS,,COPY,INPUT,OUTPUT,1.

MAX FL: 150008

REMARKS

IF USER HAS ALREADY ATTACHED RIQSCOPYS (WITH LFN 'COPYS'),
HE WILL STILL HAVE IT AFTER THIS PROCEDURE.

EXAMPLE

REWIND AND COPY A RANDOM FILE:
ATTACH,RANIN,..... INPUT RANDOM FILE
REQUEST,RANOUT,*PF. OUTPUT RANDOM FILE
BEGIN,COPYS,,COPYIX,RANIN,RANOUT.
CATALOG,RANOUT,.....

AUTHOR

NORTHWESTERN UNIVERSITY

DATE WRITTEN:

DATE(S) REVISED

PROCEDURE 'CPINDEX'

PURPOSE

CONVERT SEQUENTIAL PROCEDURE FILE TO RANDOM

FUNCTIONAL CATEGORY: K3 Q7

LOCATION OF PROCEDURE

SYSTEM PUBLIC ACCESS PROCEDURE FILE

USAGE

BEGIN,CPINDEX,,IDS,IDR,AC,PWR1,PWR2.

DESCRIPTION OF PARAMETERS

- IDS - ID UNDER WHICH SEQUENTIAL FILE 'PROFILS' IS CATALOGED
- IDR - ID UNDER WHICH RANDOM FILE 'PROFIL' IS TO BE CATALOGED
- AC - JOB ORDER NUMBER FOR CATALOG (MAY BE OMITTED)
- PWR1,2 - PASSWORDS FOR RANDOM FILE (WILL HAVE EFFECT ONLY IF AT LEAST ONE CYCLE OF RANDOM FILE 'PROFIL' EXISTS BEFORE CPINDEX IS EXECUTED)

DEFAULT BEGIN STATEMENT

NO MEANINGFUL DEFAULT VALUES

MAX FL:

REMARKS

PFN OF SEQUENTIAL FILE MUST BE 'PROFILS'.
PFN OF RANDOM FILE WILL BE 'PROFIL'.
LOWEST CYCLE OF 'PROFIL' WILL BE PURGED, IF POSSIBLE.
AT LEAST 2 CYCLES WILL ALWAYS BE RETAINED.

AUTHOR

DAVID W SOMMER - DTNSROC CODE 1892.2

DATE WRITTEN: EARLY 1975

DATE(S) REVISED

07/23/76

10/04/76 - CORRECT RETENTION OF LAST 2 CYCLES. CPINDEX MAY NOW BE EXECUTED EVEN IF NO RANDOM FILE EXISTS BEFORE EXECUTION. IN THE LATTER CASE, PASSWORDS (PWR1, PWR2) ARE NOT ADDED TO THE CATALOGED FILE.

PROCEDURE 'CPU'

PURPOSE

TELL TELETYPE USER WHICH MACHINE HE IS ON

FUNCTIONAL CATEGORY: Q0

LOCATION OF PROCEDURE

SYSTEM PUBLIC ACCESS PROCEDURE FILE

USAGE

BEGIN,CPU.

DEFAULT BEGIN STATEMENT

BEGIN,CPU.

MAX FL: 15000B

REMARKS

NONE

AUTHOR

DAVID V SOMMER - DTNSRDC CODE 1892.2

DATE WRITTEN: 05/10/76

DATE(S) REVISED

PROCEDURE 'CV29'

PURPOSE

CONVERT TO 029 PUNCH CODE

FUNCTIONAL CATEGORIES: J1 M2 01

LOCATION OF PROCEDURE

SYSTEM PUBLIC ACCESS PROCEDURE FILE

USAGE

BEGIN, CV29,, LFN, TID.

DESCRIPTION OF PARAMETERS

LFN - FILE TO BE CONVERTED

TID - ID OF TERMINAL AT WHICH THE 029 DECK IS TO BE
PUNCHED. USE 'C' FOR CENTRAL SITE OR USE THE
2-CHARACTER 1700 ID.

DEFAULT BEGIN STATEMENT

BEGIN, CV29,, INPUT, C.

REMARKS

NONE

AUTHOR

DAVID V SOMMER - DTNSRDC CODE 1892.2

DATE WRITTEN: EARLY 1975

DATE(S) REVISED

01/31/77 - ADD REQUEST, TAPE1, *Q.

PROCEDURE 'DOCADD'

PURPOSE

ADD ONE DOCUMENT TO A DOCUMENTATION FILE

FUNCTIONAL CATEGORIES: Q6

LOCATION OF PROCEDURE

SYSTEM PUBLIC ACCESS PROCEDURE FILE

USAGE

BEGIN,DOCADD,,LIB, ID, PROG, AFTER, LFN, AC, PW1, PW2.

DESCRIPTION OF PARAMETERS

LIB - FIRST PART OF DOCUMENTATION FILE PFN
(FULL PFN IS LIB_DOCUMENTATION)
ID - ID UNDER WHICH IT IS CATALOGED
(DEFAULT: SYSTEM PUBLIC ACCESS ID)
PROG - NAME OF DOCUMENT TO BE ADDED
AFTER - NAME OF DOCUMENT AFTER WHICH THIS DOCUMENT IS TO
BE PLACED
(IF BLANK, WILL GO IN ALPHABETICAL ORDER.
IF '0', WILL GO AT START OF FILE.
IF 'END', WILL GO AT END OF FILE.)
LFN - LFN OF FILE CONTAINING NEW DOCUMENT.
IT IS REWOUND BEFORE BEING READ. IT MUST NOT
CONTAIN A *DECK CARD.
AC - JOB ORDER NUMBER FOR CATALOG
(MAY BE OMITTED)
PW1, PW2 - PASSWORDS

DEFAULT BEGIN STATEMENT

NO MEANINGFUL DEFAULT VALUES

MAX FL: 310003

REMARKS

THE LOWEST CYCLE OF LIB_DOCUMENTATION IS PURGED, IF
POSSIBLE. AT LEAST 2 CYCLES ARE ALWAYS RETAINED.

EXAMPLES

ASSUME THE OLD DOCUMENT FILE WAS CATALOGED WITH:
CATALOG, FILE, MYDOCUMENTATION, ID=CXXX, XR=RONLY.
AND HAS DOCUMENTS: A, B, D, F, G, H.

TO ADD DOCUMENT C (ON LFN CC) IN ALPHABETICAL ORDER:

BEGIN,DOCADD,,MY,CXXX,C,,CC,,RONLY.

THE NEW DOCUMENT FILE WILL HAVE: A, B, C, D, F, G, H.

TO ADD DOCUMENT C (ON LFN CC) AT START OF THE FILE:

BEGIN,DOCADD,,MY,CXXX,C,0,CC,,RONLY.

THE NEW DOCUMENT FILE WILL HAVE: C, A, B, D, F, G, H.

TO ADD THE DOCUMENT C (ON LFN CC) AT THE END OF THE FILE:

BEGIN,DOCADD,,MY,CXXX,C,END,CC.

THE NEW DOCUMENT WILL HAVE: A, B, D, F, G, H, C.

TO ADD THE DOCUMENT C (ON LFN CC) AFTER DOCUMENT F:
BEGIN,DOCADD,,MY,CXXX,C,F,CC,,RONLY.
THE NEW DOCUMENT FILE WILL HAVE: A, B, D, F, C, G, H.

SUGGESTED COMPLETE SEQUENCE OF OPERATIONS FOR CREATING A
DOCUMENT (USING DOC AND EDITOR) AND ADDING IT TO AN EXISTING
DOCUMENT FILE:

CONNECT,OUTPUT
ATTACH,UTILITY.
LIBRARY,UTILITY.
DOC. (OR MTD0C. OR PFDOC.)
(CREATE DOCUMENT IN FILE 'DOCNT')
EDITOR
EDIT,DOCNT,SEQ
(MODIFY, IF NECESSARY. INDICATE START OF EACH PAGE
BY PUTTING A '1' IN COLUMN 1 OF EACH LINE WHICH IS TO
BE THE FIRST LINE OF A PAGE.)
SAVE,NEWDOC,NOSEQ
LINER,NEWDOC.
(WILL COUNT PAGES AND LINES PER PAGE. IF ANY PAGE HAS
MORE THAN 59 LINES, GO BACK AND RESTRUCTURE THE
DOCUMENT.)
BYE
DOCIT,NEWDOC,FILE.
(WILL LENGTHEN EACH PAGE TO 60 LINES ADDING THE DATE,
DOCUMENT NAME AND PAGE COUNTS.)
BEGIN,DOCADD,,MYLIB,CXXX,DOCNAME,,FILE,,RONLY.
(WILL ADD THE DOCUMENT JUST CREATED (ON LFN 'FILE') TO
THE DOCUMENT FILE WITH PFN=MYLIBDOCUMENTATION,
ID=CXXX, IN ALPHABETICAL ORDER ACCORDING TO THE
SPECIFIED DOCUMENT NAME 'DOCNAME'. ALPHABETICAL
ORDER IS RECOMMENDED SO THAT LISTS OF THE CONTENTS
WILL BE MORE READABLE.)
BEGIN,DOCLIST,,MYLIB,CXXX,OUT.
(GET A LIST OF DOCUMENT NAMES WITH NUMBER OF CARDS,
LINES AND PAGES FOR EACH.)
PROGDOC,MYLIB,CXXX,DOCNAME,OUT.
(LIST THE DOCUMENT FROM THE DOCUMENT FILE TO VERIFY IT
WAS ADDED PROPERLY.)
BANNER,END,OUT.
(TO KEEP THE SYSTEM FROM PRINTING "END OF LIST"
MESSAGES ON LAST PAGE OF DOCUMENT.)
ROUTE,OUT,DC=PR,....
(PRINT THE LISTS ON ANY AVAILABLE PRINTER.)

AUTHOR
DAVID V SOMMER - DTNSROC CODE 1892.2

DATE WRITTEN: 02/01/76

DATE(S) REVISED

PROCEDURE 'DOCDELE'

PURPOSE

DELETE ONE DOCUMENT FROM A DOCUMENTATION FILE

FUNCTIONAL CATEGORIES: Q6

LOCATION OF PROCEDURE

SYSTEM PUBLIC ACCESS PROCEDURE FILE

USAGE

BEGIN,DOCDELE,,LIB,ID,PROG,AC,PW1,PW2.

DESCRIPTION OF PARAMETERS

LIB - FIRST PART OF DOCUMENTATION FILE PFN
(FULL PFN IS LIB_DOCUMENTATION)
ID - ID UNDER WHICH IT IS CATALOGED
(DEFAULT: SYSTEM PUBLIC ACCESS ID)
PROG - NAME OF DOCUMENT TO BE DELETED
AC - JOB ORDER NUMBER FOR CATALOG
(MAY BE OMITTED)

DEFAULT BEGIN STATEMENT

PW1,PW2 - PASSWORDS NT
NO MEANINGFUL DEFAULT VALUES

MAX FL: 310008

REMARKS

THE LOWEST CYCLE OF LIB_DOCUMENTATION IS PURGED, IF
POSSIBLE. AT LEAST 2 CYCLES ARE ALWAYS RETAINED.

EXAMPLES

ASSUME THE OLD DOCUMENT FILE WAS CATALOGED WITH:
CATALOG,FILE,MYDOCUMENTATION,ID=CXXX,XR=RONLY.
AND HAS DOCUMENTS: A, B, D, F, G, H.

TO DELETE DOCUMENT G:
BEGIN,DOCDELE,,MY,CXXX,G,,RONLY.
THE NEW DOCUMENT FILE WILL HAVE: A, B, D, F, H.

AUTHOR

DAVID V SOMMER - DTNSRDC CODE 1892.2

DATE WRITTEN: 02/01/76

DATE(S) REVISED

PROCEDURE 'DOCDOC'

PURPOSE

LIST DOCUMENTATION FOR PROCEDURES DOCADD, DOCDELE, DOCDOC,
DOCFILE, DOCGET, DOCLIST, DCREPL

FUNCTIONAL CATEGORIES: 01

LOCATION OF PROCEDURE

SYSTEM PUBLIC ACCESS PROCEDURE FILE

USAGE

BEGIN,DOCDOC,,OUTPUT,LEFT.

DESCRIPTION OF PARAMETERS

OUTPUT - LISTABLE OUTPUT

LEFT - OMITTED - PRINT LEFT-JUSTIFIED ON PAGE

NON-BLANK - PRINT CENTERED ON WIDE PAGE

DEFAULT BEGIN STATEMENT

BEGIN,DOCDOC,,OUTPUT.

MAX FL: 25000B

REMARKS

A BANNER PAGE PRECEDES THE LIST AND CONTAINS THE WORD
'DOCDOC'. A BANNER PAGE WITH THE WORD 'END' FOLLOWS THE
LIST.

AUTHOR

DAVID V SOMMER - DTNSRDC CODE 1892.2

DATE WRITTEN: 02/10/77

DATE(S) REVISED

PROCEDURE 'DOCFILE'

PURPOSE

ATTACH A DOCUMENTATION FILE

FUNCTIONAL CATEGORIES: Q6

LOCATION OF PROCEDURE

SYSTEM PUBLIC ACCESS PROCEDURE FILE

USAGE

BEGIN,DOCFILE,,LFN,PFN,ID,PW1,PW2.

DESCRIPTION OF PARAMETERS

LFN - LOCAL FILE NAME TO BE USED

PFN - FIRST PART OF PFN.

FULL PFN IS PFN_DOCUMENTATION.

ID - ID UNDER WHICH IT IS CATALOGED

(DEFAULT: SYSTEM PUBLIC ACCESS ID)

PW1,PW2 - PASSWORDS

DEFAULT BEGIN STATEMENT

NO MEANINGFUL DEFAULT VALUES

MAX FL: 150008 (BEGIN/REVERT REQUIRES 150008)

REMARKS

SAME AS: ATTACH,LFN,PFN_DOCUMENTATION,ID=*---*,PW=PW1,PW2.

AUTHOR

DAVID V SOMMER - DTNSRDC CODE 1892

DATE WRITTEN: 02/01/76

DATE(S) REVISED

PROCEDURE 'DOCGET'

PURPOSE

GET (EXTRACT) SPECIFIED DOCUMENT FROM A DOCUMENTATION FILE

FUNCTIONAL CATEGORIES: Q6

LOCATION OF PROCEDURE

SYSTEM PUBLIC ACCESS PROCEDURE FILE

USAGE

BEGIN, DOCGET, , LIB, ID, PROG, OUTPUT.

DESCRIPTION OF PARAMETERS

LIB - FIRST PART OF PFN
(FULL PFN IS PFN_DOCUMENTATION)
ID - ID UNDER WHICH IT IS CATALOGED
(DEFAULT: SYSTEM PUBLIC ACCESS ID)
PROG - NAME OF DOCUMENT TO BE EXTRACTED
(USE 'ALL' FOR ALL DOCUMENTS)
OUTPUT - LISTABLE OUTPUT

DEFAULT BEGIN STATEMENT

NO MEANING. DEFAULT VALUES

MAX FL: 300008

REMARKS

NONE

AUTHOR

DAVID V SOMMER - DTNSRDC CODE 1892.2

DATE WRITTEN: 02/01/76

DATE(S) REVISED

PROCEDURE 'DOCLIST'

PURPOSE

LIST DOCUMENT NAMES (ON *DECK) CARDS IN A DOCUMENTATION FILE

FUNCTIONAL CATEGORIES: Q6

LOCATION OF PROCEDURE

SYSTEM PUBLIC ACCESS PROCEDURE FILE

USAGE

BEGIN,DOCLIST,,LIB,ID,OUTPUT.

DESCRIPTION OF PARAMETERS

LIB - FIRST PART OF PFN
(FULL PFN IS PFN_DOCUMENTATION)
ID - ID UNDER WHICH IT IS CATALOGED
(DEFAULT: SYSTEM PUBLIC ACCESS ID)
OUTPUT - LISTABLE OUTPUT

DEFAULT BEGIN STATEMENT

NO MEANINGFUL DEFAULT VALUES

MAX FL: 27000B

REMARKS

IN ADDITION TO THE DOCUMENT NAMES, THE NUMBER OF CARDS,
LINES AND PAGES IS GIVEN FOR EACH DOCUMENT.

AUTHOR

DAVID V SOMMER - DTNSRDC CODE 1892.2

DATE WRITTEN: 02/01/76

DATE(S) REVISED

04/23/76

PROCEDURE 'DOCREPL'

PURPOSE

REPLACE ONE DOCUMENT IN A DOCUMENTATION FILE

FUNCTIONAL CATEGORIES: Q6

LOCATION OF PROCEDURE

SYSTEM PUBLIC ACCESS PROCEDURE FILE

USAGE

BEGIN,DOCREPL,,LIB, ID, PROG, AFTER, LFN, AC, PW1, PW2.

DESCRIPTION OF PARAMETERS

- LIB - FIRST PART OF DOCUMENTATION FILE PFN
(FULL PFN IS LIB_DOCUMENTATION)
- ID - ID UNDER WHICH IT IS CATALOGED
(DEFAULT: SYSTEM PUBLIC ACCESS ID)
- PROG - NAME OF DOCUMENT TO BE REPLACED
- AFTER - NAME OF DOCUMENT AFTER WHICH THIS DOCUMENT IS TO
BE PLACED
(IF BLANK, WILL GO IN ALPHABETICAL ORDER.
IF '0', WILL GO AT START OF FILE.
IF 'END', WILL GO AT END OF FILE.)
(USED ONLY IF PROG DOES NOT ALREADY EXIST IN THE
DOCUMENT FILE.)
- LFN - LFN OF FILE CONTAINING NEW DOCUMENT.
IT IS REWOUND BEFORE BEING READ. IT MUST NOT
CONTAIN A *DECK CARD.
- AC - JOB ORDER NUMBER FOR CATALOG
(MAY BE OMITTED)
- PW1, PW2 - PASSWORDS

DEFAULT BEGIN STATEMENT

NO MEANINGFUL DEFAULT VALUES

MAX FL: 31000B

REMARKS

THE LOWEST CYCLE OF LIB_DOCUMENTATION IS PURGED, IF
POSSIBLE. AT LEAST 2 CYCLES ARE ALWAYS RETAINED.

EXAMPLES

ASSUME THE OLD DOCUMENT FILE WAS CATALOGED WITH:
CATALOG, FILE, MYDOCUMENTATION, ID=CXXX, XR=RONLY.
AND HAS DOCUMENTS: A, B, D, F, G, H.

TO REPLACE DOCUMENT F (NEW DOCUMENT ON LFN FF):
BEGIN,DOCREPL,,MY,CXXX,F,,FF,,RONLY.
THE NEW DOCUMENT FILE WILL HAVE: A, B, D, F, G, H.

TO REPLACE DOCUMENT E (NEW DOCUMENT ON LFN EE):
BEGIN,DOCREPL,,MY,CXXX,E,,EE,,RONLY.
THE NEW DOCUMENT FILE WILL HAVE: A, B, D, E, F, G, H.

NOTE THAT SINCE E DID NOT EXIST, REPLACE WAS CHANGED TO ADD.
BECAUSE THE AFTER PARAMETER WAS OMITTED, E WAS ADDED
ALPHABETICALLY.

AUTHOR
DAVID V SOMMER - DTNSRDC CODE 1892.2

DATE WRITTEN: 02/01/76

DATE(S) REVISED

PROCEDURE 'GRIPE'

PURPOSE

ALLOW USER TO MAKE GRIPES OR SUGGESTIONS DIRECTLY TO THE COMPUTER.

FUNCTIONAL CATEGORY: S0

LOCATION OF PROCEDURE

SYSTEM PUBLIC ACCESS PROCEDURE FILE

USAGE

BEGIN,GRIPE,,OUTPUT,PROMPT,WHOM,INPUT.

DESCRIPTION OF PARAMETERS

- OUTPUT - LISTABLE OUTPUT, IF USER REQUESTS A COPY OF HIS COMMENTS. TO PRINT AT THE TELETYPE, USER MUST CONNECT,OUTPUT.
- PROMPT - INTERACTIVE USE ONLY:
IF NO - ONLY NOMINAL PROMPTING IS PROVIDED.
IF OMITTED OR ANYTHING ELSE - FULL PROMPTING IS PROVIDED.
- WHOM - IF USER HAS HIS ADMINISTRATIVE INFORMATION BUILT INTO THE PROGRAM, THIS IS HIS IDENTIFIER. IF OMITTED OR INVALID ENTRY - USER WILL BE PROMPTED FOR ADMINISTRATIVE INFORMATION.
- INPUT - BATCH: FILE FROM WHICH GRIPE AND ADMINISTRATIVE INFORMATION IS TO BE READ.
INTERACTIVE: IF GRIPE IS TO BE ENTERED DIRECTLY FROM THE KEYBOARD, OMIT THIS PARAMETER.
IF THE GRIPE WAS PREPARED EARLIER (E.G., USING EDITOR), ENTER THE LFN OF THE FILE CONTAINING THE GRIPE (DO NOT USE LFN 'INPUT').

DEFAULT BEGIN STATEMENT

BATCH : BEGIN,GRIPE,,OUTPUT,,INPUT.
INTERACTIVE: BEGIN,GRIPE,,OUTPUT.

MAX FL: 36000B

REMARKS

ALL GRIPES WILL BE READ AND TROUBLE FORMS PREPARED, IF APPROPRIATE.

DATA CARDS (BATCH ONLY)

THE GRIPE IS ENTERED IN COLUMNS 1-70 OF AS MANY CARDS AS REQUIRED (PLEASE BE BRIEF). THIS IS FOLLOWED BY A CARD WITH 'END ' IN COLUMNS 1-10.

THE LAST CARD HAS ADMINISTRATIVE INFORMATION FOR PREPARING A TROUBLE FORM, SHOULD ONE BE NECESSARY. IT CONTAINS:

-COL-	CONIENIS
1-20	NAME
21-40	DTNSRDC CODE OR COMPANY NAME
41-50	TELEPHONE
51-54	USER INITIALS (OF THE FORM CXXX)

EXAMPLES

THE SIMPLEST FORM FOR BATCH USE:

```
JOB CARD  
CHARGE CARD  
BEGIN,GRIFE.  
" 7/8/9 EOR  
  (GRIFE)  
END  
NAME ... CODE ... PHONE INIT  
" 6/7/8/9 EOF
```

THE SIMPLEST FORM FOR INTERACTIVES:

```
CONNECT,OUTPUT.  
BEGIN,GRIFE.
```

AUTHOR

DAVID V SOMMER - DTNSRDC CODE 1892.2

DATE WRITTEN: 03/76

DATE(S) REVISED

PROCEDURE 'LIBSET1'

PURPOSE

CREATE SIMPLE ABSOLUTE USING ONE EDITLIB LIBRARY

FUNCTIONAL CATEGORY: Q7

LOCATION OF PROCEDURE

SYSTEM PUBLIC ACCESS PROCEDURE FILE

USAGE

BEGIN,LIBSET1,,LGO,ABS,LIB1,ID1.

DESCRIPTION OF PARAMETERS

LGO - RELOCATABLE PROGRAM

ABS - RESULTING ABSOLUTE MODULE

LIB1 - PFN OF EDITLIB USER LIBRARY
(DEFAULT: NSRDC)

ID1 - ID UNDER WHICH LIB1 IS CATALOGED
(DEFAULT: SYSTEM PUBLIC ACCESS ID)

DEFAULT BEGIN STATEMENT

BEGIN,LIBSET1,,LGO,ABS,NSRDC.

MAX FL: DEPENDS ON PROGRAM BEING LOADED

REMARKS

NONE

AUTHOR

DAVID V SOMMER - DTNSRDC CODE 1892.2

DATE WRITTEN: 03/01/76

DATE(S) REVISED

PROCEDURE 'LIBSET2'

PURPOSE

CREATE SIMPLE ABSOLUTE USING TWO EDITLIB LIBRARIES

FUNCTIONAL CATEGORY: Q7

LOCATION OF PROCEDURE

SYSTEM PUBLIC ACCESS PROCEDURE FILE

USAGE

BEGIN,LIBSET2,,LGO,ABS,LIB1,ID1,LIB2,ID2.

DESCRIPTION OF PARAMETERS

LGO - RELOCATABLE PROGRAM
ABS - RESULTING ABSOLUTE MODULE
LIB1 - PFN OF FIRST EDITLIB USER LIBRARY
(DEFAULT: NSRDC)
ID1 - ID UNDER WHICH LIB1 IS CATALOGED
(DEFAULT: SYSTEM PUBLIC ACCESS ID)
LIB2 - PFN OF SECOND EDITLIB USER LIBRARY
(DEFAULT: NSRDC)
ID2 - ID UNDER WHICH LIB2 IS CATALOGED
(DEFAULT: SYSTEM PUBLIC ACCESS ID)

DEFAULT BEGIN STATEMENT

BEGIN,LIBSET2,,LGO,ABS,NSRDC,,NSRDC.

MAX FL: DEPENDS ON PROGRAM BEING LOADED

REMARKS

NONE

AUTHOR

DAVID V SOMMER - DTNSRDC CODE 1892.2

DATE WRITTEN: 03/01/76

DATE(S) REVISED

PROCEDURE 'LINE6'

PURPOSE

SET PRINT FILE TO 6 LINES PER INCH

FUNCTIONAL CATEGORY: J4

LOCATION OF PROCEDURE

SYSTEM PUBLIC ACCESS PROCEDURE FILE

USAGE

BEGIN,LINE6,,OUTPUT.

DESCRIPTION OF PARAMETER

OUTPUT - LISTABLE OUTPUT

DEFAULT BEGIN STATEMENT

BEGIN,LINE6,,OUTPUT.

MAX FL: 60008

REMARKS

USER SHOULD PRINT HIS NEXT LINE AT THE TOP OF THE NEXT PAGE.

AUTHOR

DAVID V SOMMER - DTNSRDC CODE 1892.2

DATE WRITTEN: 06/07/76

DATE(S) REVISED

PROCEDURE 'LINE8'

PURPOSE

SET PRINT FILE TO 8 LINES PER INCH

FUNCTIONAL CATEGORY: J4

LOCATION OF PROCEDURE

SYSTEM PUBLIC ACCESS PROCEDURE FILE

USAGE

BEGIN,LINE8,,OUTPUT.

DESCRIPTION OF PARAMETER

OUTPUT - LISTABLE OUTPUT

DEFAULT BEGIN STATEMENT

BEGIN,LINE8,,OUTPUT.

MAX FL: 60008

REMARKS

USER SHOULD PRINT HIS NEXT LINE AT THE TOP OF THE NEXT PAGE.

AUTHOR

DAVID V SOMMER - DTNSRDC CODE 1892.2

DATE WRITTEN: 06/07/76

DATE(S) REVISED

PROCEDURE 'MNSRDC'

PURPOSE

EXECUTE A PROGRAM ON EDITLIB USER LIBRARY 'MNSRDC'

FUNCTIONAL CATEGORY: Q7

LOCATION OF PROCEDURE

SYSTEM PUBLIC ACCESS PROCEDURE FILE

USAGE

BEGIN,MNSRDC,,PROG,PARAMS.

DESCRIPTION OF PARAMETERS

PROG - PROGRAM TO BE EXECUTED
PARAMS - UP TO 19 PARAMETERS FOR 'PROG'

DEFAULT BEGIN STATEMENT

NO MEANINGFUL DEFAULT VALUES

MAX FL: DEPENDS ON PROGRAM BEING EXECUTED

REMARKS

NONE

AUTHOR

DAVID V SOMMER - DTNSRDC CODE 1892.2

DATE WRITTEN: 07/25/77

DATE(S) REVISED

PROCEDURE 'MYPRO'

PURPOSE

EXECUTE A PROCEDURE ON FILE 'PROFIL' CATALOGED UNDER ANY ID

FUNCTIONAL CATEGORY: Q7

LOCATION OF PROCEDURE

SYSTEM PUBLIC ACCESS PROCEDURE FILE

USAGE

BEGIN,MYPRO,,ID,PNAME,PARAMS.

DESCRIPTION OF PARAMETERS

ID - ID UNDER WHICH PROCEDURE FILE IS CATALOGED
(PFN MUST BE 'PROFIL')

PNAME - PROCEDURE NAME

PARAMS - UP TO 18 POSITIONAL PARAMETERS FOR PROCEDURE
'PNAME'

DEFAULT BEGIN STATEMENT

NO MEANINGFUL DEFAULT VALUES

MAX FL: DEPENDS UPON PROCEDURE BEING EXECUTED

REMARKS

NONE

AUTHOR

DAVID V SOMMER - DTNSRDC CODE 1892.2

DATE WRITTEN: 07/21/76

DATE(S) REVISED

PROCEDURE 'NOGO'

PURPOSE

CREATE SIMPLE ABSOLUTE FROM RELOCATABLE

FUNCTIONAL CATEGORY: Q7

LOCATION OF PROCEDURE

SYSTEM PUBLIC ACCESS PROCEDURE FILE

USAGE

BEGIN,NOGO,,LGO,ABS.

DESCRIPTION OF PARAMETERS

LGO - RELOCATABLE PROGRAM

ABS - RESULTING ABSOLUTE MODULE
(MAY BE CATALOGED)

DEFAULT BEGIN STATEMENT

BEGIN,NOGO,,LGO,ABS.

MAX FL: DEPENDS UPON PROGRAM BEING LOADED

REMARKS

NONE

AUTHOR

DAVID V SOMMER - DTNSROC CODE 1892.2

DATE WRITTEN: 04/21/76

DATE(S) REVISED

PROCEDURE 'NORERJN'

PURPOSE

INSURE THAT A BATCH JOB CANNOT BE RERUN BY OPERATOR
TYPE-IN

FUNCTIONAL CATEGORY: Q0

LOCATION OF PROCEDURE
SYSTEM PUBLIC ACCESS PROCEDURE FILE

USAGE

BEGIN,NORERUN.

DEFAULT BEGIN STATEMENT

BEGIN,NORERUN.

MAX FL: 45003

REMARKS

THIS PROCEDURE WILL CATALOG AND PURGE A DUMMY FILE.

ERROR MESSAGES

SORRY - NORERUN IS FOR BATCH ONLY
TRIED TO EXECUTE PROCEDURE OUTSIDE OF BATCH

AUTHOR

DAVID V SOMMER - DTNSRDC CODE 1892.2

DATE WRITTEN: 06/14/77

DATE(S) REVISED

PROCEDURE 'PGMTAPE'

PURPOSE

EXTRACT A SOURCE PROGRAM FROM TAPE

FUNCTIONAL CATEGORY: Q6

LOCATION OF PROCEDURE

SYSTEM PUBLIC ACCESS PROCEDURE FILE

USAGE

BEGIN,PGMTAPE,,LIB,PGM,OUTFILE,CST.

DESCRIPTION OF PARAMETERS

LIB - LIBRARY (ONE OF: BIMED, NSRDC (DEFAULT),
SC4020, SSP)

PGM - PROGRAM DESIRED

OUTFILE - FILE TO CONTAIN SOURCE PROGRAM

CST - TYPE OF FILE DESIRED

C - COMPILE FILE (UPDATE,C=OUTFILE)

S - SOURCE FILE (UPDATE,S=OUTFILE)

T - SOURCE FILE (UPDATE.T=OUTFILE)

DEFAULT BEGIN STATEMENT

BEGIN,PGMTAPE,,NSRDC,*,COMPILE,C.

(* - USER MUST SUPPLY)

MAX FL: 420008

REMARKS

THIS IS A BATCH-ONLY PROCEDURE. THE JOB CARD MUST SPECIFY
MT1. THE PROCEDURE WILL SUPPLY THE LABEL CARD.

ERROR MESSAGES

NO PROGRAM REQUESTED

PARAMETER 'PGM' WAS OMITTED.

PGMTAPE REQUIRES A TAPE AND MUST BE RUN FROM BATCH

USER TRIED TO EXECUTE PGMTAPE FROM INTERCOM.

UNKNOWN LIBRARY (<LIB>)

INDICATED LIBRARY NAME IS NOT SUPPORTED.

EXAMPLE

GET SOURCE PROGRAM FOR PROGRAM 'CMPINV' IN LIBRARY 'NSRDC':

JOBNAME,MT1.

CHARGE,....

BEGIN,PGMTAPE,,,CMPINV,FILE.

LFN 'FILE' CONTAINS A COMPILE FILE COPY OF 'CMPINV'.

AUTHOR

DAVID V SOMMER - DTNSRDC CODE 1892.2

DATE WRITTEN: 08/24/77

DATE(S) REVISED

PROCEDURE 'PM'

PURPOSE

CREATE CERTAIN PRINT MESSAGE (PM) RECORDS

FUNCTIONAL CATEGORY: J4

LOCATION OF PROCEDURE

SYSTEM PUBLIC ACCESS PROCEDURE FILE

USAGE

BEGIN,PM,,,FC,OUTPUT,PM1,PM2,PM3,PM4,PM5,PM6.

DESCRIPTION OF PARAMETERS

FC - FORMS CODE
OMITTED - PM RESTORE PRINTER
1T - PM 1-PART NARROW UNLINED PAPER
'OTHER' - PM PM1 PM2 PM3 PM4 PM5 PM6
(USER MAY CREATE A MESSAGE OF UP TO
6 WORDS (30 CHARACTERS MAX))
OUTPUT - LISTABLE OUTPUT
PM1-PM6 - UP TO 6 WORDS FOR USER-SPECIFIED PM MESSAGE
(USED ONLY WHEN FC=OTHER)

DEFAULT BEGIN STATEMENT

BEGIN,PM,,,OUTPUT.

MAX FL: 60008

REMARKS

BE SURE 'BEGIN,PM,,,OUTPUT.' HAS BEEN EXECUTED TO RESTORE
PRINTER BEFORE ROUTING OUTPUT TO BE PRINTED.

PM MESSAGES ARE IGNORED AT CENTRAL SITE. USE FC= ON ROUTE
COMMAND.

AUTHOR

DAVID V SOMMER - DTNSRDC CODE 1892.2

DATE WRITTEN: 07/30/76

DATE(S) REVISED

11/19/76 - ADD 'OTHER' OPTION

PROCEDURE 'PROADD'

PURPOSE

ADD ONE PROCEDURE TO A SEQUENTIAL PROCEDURE FILE

FUNCTIONAL CATEGORIES: Q7

LOCATION OF PROCEDURE

SYSTEM PUBLIC ACCESS PROCEDURE FILE

USAGE

BEGIN,PROADD,,ID,NEW,AC,PW1,PW2.

DESCRIPTION OF PARAMETERS

ID - ID UNDER WHICH PROCEDURE FILE IS CATALOGED
(PFN IS 'PROFILS')
NEW - FILE CONTAINING NEW NAMED PROCEDURE
(MAY NOT BE FILE 'INPUT')
AC - AC FOR CATALOG (MAY BE OMITTED)
PW1,PW2 - PASSWORDS

DEFAULT BEGIN STATEMENT

NO MEANINGFUL DEFAULT VALUES

MAX FL: 36000B

REMARKS

PROCEDURE FILE IS A SEQUENTIAL FILE OF NAMED PROCEDURES
ARRANGED IN ALPHABETICAL ORDER. EACH PROCEDURE CONSISTS OF
ONE AND ONLY ONE SCOPE LOGICAL RECORD.

ALL EMPTY RECORDS ARE REMOVED.

THE LOWEST CYCLE IS PURGED, IF POSSIBLE. AT LEAST 2
CYCLES ARE ALWAYS RETAINED.

AUTHOR

DAVID V SOMMER - DTNSRDC CODE 1892.2

DATE WRITTEN: 05/28/76

DATE(S) REVISED

PROCEDURE 'PROALL'

PURPOSE

LIST PROCEDURE NAMES, PROCEDURE HEADERS AND THE PROCEDURES
IN A SEQUENTIAL PROCEDURE FILE (COMBINES PRONAM, PROHDR
AND PROLIST)

FUNCTIONAL CATEGORIES: Q7

LOCATION OF PROCEDURE

SYSTEM PUBLIC ACCESS PROCEDURE FILE

USAGE

BEGIN,PROALL,,ID,OUTPUT,LEFT.

DESCRIPTION OF PARAMETERS

ID - ID UNDER WHICH THE PROCEDURE FILE IS CATALOGED
(PFN IS 'PROFILS')
OUTPUT - LISTABLE OUTPUT
LEFT - OMITTED - PRINT LEFT-JUSTIFIED ON PAGE
NON-BLANK - PRINT CENTERED ON WIDE PAGE

DEFAULT BEGIN STATEMENT

NO MEANINGFUL DEFAULT VALUES

MAX FL: 360008

REMARKS

A BANNER PAGE PRECEDES THE LIST AND CONTAINS THE WORD
'PROFILS' AND THE SPECIFIED ID. A BANNER PAGE WITH THE
WORD 'END' FOLLOWS THE LIST.

AUTHOR

DAVID V SOMMER - DTNSRDC CODE 1892.2

DATE WRITTEN: 06/02/76

DATE(S) REVISED

02/10/77 - ADD PARAMETER 'LEFT'

PROCEDURE 'PRODELE'

PURPOSE

DELETE ONE PROCEDURE FROM A SEQUENTIAL PROCEDURE FILE

FUNCTIONAL CATEGORIES: Q7

LOCATION OF PROCEDURE

SYSTEM PUBLIC ACCESS PROCEDURE FILE

USAGE

BEGIN,PRODELE,,ID,PROCED,AC,PW1,PW2.

DESCRIPTION OF PARAMETERS

ID - ID UNDER WHICH PROCEDURE FILE IS CATALOGED
(PFN IS 'PROFILS')
PROCED - PROCEDURE TO BE DELETED
AC - AC FOR CATALOG (MAY BE OMITTED)
PW1,PW2 - PASSWORDS

DEFAULT BEGIN STATEMENT

NO MEANINGFUL DEFAULT VALUES

MAX FL: 36000B

REMARKS

PROCEDURE FILE IS A SEQUENTIAL FILE OF NAMED PROCEDURES
ARRANGED IN ALPHABETICAL ORDER. EACH PROCEDURE CONSISTS OF
ONE AND ONLY ONE SCOPE LOGICAL RECORD.

ALL EMPTY RECORDS ARE REMOVED.

THE LOWEST CYCLE IS PURGED, IF POSSIBLE. AT LEAST 2
CYCLES ARE ALWAYS RETAINED.

AUTHOR

DAVID V SOMMER - DTNSRDC CODE 1892.2

DATE WRITTEN: 05/28/76

DATE(S) REVISED

PROCEDURE 'PRODOC'

PURPOSE

LIST DOCUMENTATION FOR PROCEDURES PROADD, PROALL, PROJELE,
PRODOC, PROGET, PROHDR, PROLIST, PRONAM, PROREPL

FUNCTIONAL CATEGORIES: 01

LOCATION OF PROCEDURE

SYSTEM PUBLIC ACCESS PROCEDURE FILE

USAGE

BEGIN,PRODOC,,OUTPUT,LEFT.

DESCRIPTION OF PARAMETERS

OUTPUT - LISTABLE OUTPUT

LEFT - OMITTED - PRINT LEFT-JUSTIFIED ON PAGE

NON-BLANK - PRINT CENTERED ON WIDE PAGE

DEFAULT BEGIN STATEMENT

BEGIN,PRODOC,,OUTPUT.

MAX FL: 250008

REMARKS

A BANNER PAGE PRECEDES THE LIST AND CONTAINS THE WORD
'PRODOC'. A BANNER PAGE WITH THE WORD 'END' FOLLOWS THE
LIST.

AUTHOR

DAVID V SOMMER - DTNSROC CODE 1892.2

DATE WRITTEN: 06/02/76

DATE(S) REVISED

02/10/77 - ADD PARAMETER 'LEFT'

PROCEDURE 'PROGET'

PURPOSE

GET (EXTRACT) ONE PROCEDURE FROM A SEQUENTIAL PROCEDURE FILE

FUNCTIONAL CATEGORIES: Q7

LOCATION OF PROCEDURE

SYSTEM PUBLIC ACCESS PROCEDURE FILE

USAGE

BEGIN,PROGET,,ID,PROCED,LFN,PW1,PW2.

DESCRIPTION OF PARAMETERS

ID - ID UNDER WHICH PROCEDURE FILE IS CATALOGED
(PFN IS 'PROFILS')
PROCED - NAME OF DESIRED PROCEDURE
LFN - NAME OF FILE TO CONTAIN 'PROCED'
PW1,PW2 - PASSWORDS

DEFAULT BEGIN STATEMENT

NO MEANINGFUL DEFAULT VALUES

MAX FL: 360008

REMARKS

PROCEDURE FILE IS A SEQUENTIAL FILE OF NAMED PROCEDURES
ARRANGED IN ALPHABETICAL ORDER. EACH PROCEDURE CONSISTS OF
ONE AND ONLY ONE SCOPE LOGICAL RECORD.

AUTHOR

DAVID V SOMMER - DTNSROC CODE 1892.2

DATE WRITTEN: 05/28/76

DATE(S) REVISED

02/04/77 - ADD PW1 AND PW2

PROCEDURE 'PROGRAM'

PURPOSE

EXECUTE A CATALOGED PROGRAM (NOT IN A LIBRARY)

FUNCTIONAL CATEGORY: Q3

LOCATION OF PROCEDURE

SYSTEM PUBLIC ACCESS PROCEDURE FILE

USAGE

BEGIN, PROGRAM, , PFN, ID, PARAMS.

DESCRIPTION OF PARAMETERS

PFN - 1-7 CHARACTER PERMANENT FILE NAME OF
THE PROGRAM

ID - ID UNDER WHICH IT IS CATALOGED
(DEFAULT: SYSTEM PUBLIC ACCESS ID)

PARAMS - UP TO 18 PARAMETERS FOR THE PROGRAM

DEFAULT BEGIN STATEMENT

NO MEANINGFUL DEFAULT VALUES

MAX FL: DEPENDS UPON PROGRAM BEING EXECUTED

REMARKS

NONE

AUTHOR

DAVID V SOMMER - NSRDC CODE 1892.2

DATE WRITTEN: 09/14/76

DATE(S) REVISED

PROCEDURE 'PROHDR'

PURPOSE

LIST PROCEDURE HEADERS IN A PROCEDURE FILE

FUNCTIONAL CATEGORIES: Q7

LOCATION OF PROCEDURE

SYSTEM PUBLIC ACCESS PROCEDURE FILE

USAGE

BEGIN,PROHDR,,ID,OUTPUT.

DESCRIPTION OF PARAMETERS

ID - ID UNDER WHICH PROCEDURE FILE IS CATALOGED
(PFN IS 'PROFILS')

OUTPUT - LISTABLE OUTPUT

DEFAULT BEGIN STATEMENT

NO MEANINGFUL DEFAULT VALUES

MAX FL: 360008

REMARKS

PROCEDURE FILE IS A SEQUENTIAL FILE OF NAMED PROCEDURES
ARRANGED IN ALPHABETICAL ORDER. EACH PROCEDURE CONSISTS OF
ONE AND ONLY ONE SCOPE LOGICAL RECORD.

ALL EMPTY RECORDS ARE FLAGGED IN THE LIST.

AUTHOR

DAVID V SOMMER - DTNSRDC CODE 1892.2

DATE WRITTEN: 05/28/76

DATE(S) REVISED

PROCEDURE 'PROLIST'

PURPOSE

LIST PROCEDURE(S) IN A SEQUENTIAL PROCEDURE FILE

FUNCTIONAL CATEGORIES: Q7

LOCATION OF PROCEDURE

SYSTEM PUBLIC ACCESS PROCEDURE FILE

USAGE

BEGIN,PROLIST,,ID,OUTPUT,PROCED.

DESCRIPTION OF PARAMETERS

ID - ID UNDER WHICH PROCEDURE FILE IS CATALOGED
(PFN IS 'PROFILS')

OUTPUT - LISTABLE OUTPUT

PROCED - NAME OF PROCEDURE TO BE LISTED
(IF OMITTED OR 'ALL', ALL PROCEDURES ARE LISTED)

DEFAULT BEGIN STATEMENT

NO MEANINGFUL DEFAULT VALUES

MAX FL: 36000B

REMARKS

PROCEDURE FILE IS A SEQUENTIAL FILE OF NAMED PROCEDURES
ARRANGED IN ALPHABETICAL ORDER. EACH PROCEDURE CONSISTS OF
ONE AND ONLY ONE SCOPE LOGICAL RECORD.

ALL EMPTY RECORDS ARE FLAGGED IN THE LIST.

AUTHOR

DAVID V SOMMER - DTNSRDC CODE 1892.2

DATE WRITTEN: 05/28/76

DATE(S) REVISED

PROCEDURE 'PRONAM'

PURPOSE

LIST NAMES OF PROCEDURES IN A SEQUENTIAL PROCEDURE FILE

FUNCTIONAL CATEGORIES: Q7

LOCATION OF PROCEDURE

SYSTEM PUBLIC ACCESS PROCEDURE FILE

USAGE

BEGIN,PRONAM,,ID,OUTPUT,FULL.

DESCRIPTION OF PARAMETERS

ID - ID UNDER WHICH PROCEDURE FILE IS CATALOGED
(PFN IS 'PROFILS')

OUTPUT - LISTABLE OUTPUT

FULL - IF OMITTED, A FULL LIST WITH HEADINGS IS PRINTED.
IF ANYTHING IS SPECIFIED, A QUICK, SINGLE-COLUMN
LIST, WITHOUT HEADINGS, IS PROVIDED. THIS MAY BE
MORE USEFUL AT A TELETYPE.

DEFAULT BEGIN STATEMENT

NO MEANINGFUL DEFAULT VALUES

MAX FL: 360008

REMARKS

PROCEDURE FILE IS A SEQUENTIAL FILE OF NAMED PROCEDURES
ARRANGED IN ALPHABETICAL ORDER. EACH PROCEDURE CONSISTS OF
ONE AND ONLY ONE SCOPE LOGICAL RECORD.

ALL EMPTY RECORDS ARE FLAGGED IN THE LIST.

AUTHOR

DAVID V SOMMER - DTNSRDC CODE 1892.2

DATE WRITTEN: 05/28/76

DATE(S) REVISED

PROCEDURE 'PROREPL'

PURPOSE

REPLACE ONE PROCEDURE IN A SEQUENTIAL PROCEDURE FILE

FUNCTIONAL CATEGORIES: Q7

LOCATION OF PROCEDURE

SYSTEM PUBLIC ACCESS PROCEDURE FILE

USAGE

BEGIN,PROREPL,,ID,NEW,AC,PW1,PW2.

DESCRIPTION OF PARAMETERS

ID - ID UNDER WHICH PROCEDURE FILE IS CATALOGED

(PFN IS 'PROFILS')

NEW - FILE CONTAINING NEW NAMED PROCEDURE

(MAY NOT BE FILE 'INPUT')

AC - AC FOR CATALOG (MAY BE OMITTED)

PW1,PW2 - PASSWORDS

DEFAULT BEGIN STATEMENT

NO MEANINGFUL DEFAULT VALUES

MAX FL: 360008

REMARKS

PROCEDURE FILE IS A SEQUENTIAL FILE OF NAMED PROCEDURES
ARRANGED IN ALPHABETICAL ORDER. EACH PROCEDURE CONSISTS OF
ONE AND ONLY ONE SCOPE LOGICAL RECORD.

ALL EMPTY RECORDS ARE REMOVED.

THE LOWEST CYCLE IS PURGED, IF POSSIBLE. AT LEAST 2
CYCLES ARE ALWAYS RETAINED.

AUTHOR

DAVID V SOMMER - DTNSRDC CODE 1892.2

DATE WRITTEN: 05/28/76

DATE(S) REVISED

PROCEDURE 'RECAOD'

PURPOSE

ADD ONE OR MORE LOGICAL RECORDS TO A FILE

FUNCTIONAL CATEGORY: K1

LOCATION OF PROCEDURE

SYSTEM PUBLIC ACCESS PROCEDURE FILE

USAGE

BEGIN,RECAOD,,AFTER,NREC,NEW,PFN1,PFN2,ID,AC,PW1,PW2.

DESCRIPTION OF PARAMETERS

AFTER - RECORD NUMBER AFTER WHICH THE NEW RECORD(S) ARE TO
BE ADDED
NREC - NUMBER OF NEW LOGICAL RECORDS TO BE ADDED
(DEFAULT: 1)
NEW - LFN OF FILE CONTAINING NEW RECORD(S)
PFN1,2 - 1-20 CHARACTER PERMANENT FILE NAME
(IF PFN IS 1-10 CHARACTERS, USE PFN1, OMIT PFN2.
IF PFN IS 11-20 CHARACTERS, PUT FIRST 10 IN PFN1
AND THE REST IN PFN2.)
ID - ID UNDER WHICH FILE IS CATALOGED
AC - JOB ORDER NUMBER FOR NEW CATALOG
(MAY BE OMITTED)
PW1,PW2 - PASSWORDS

DEFAULT BEGIN STATEMENT

NO MEANINGFUL DEFAULT VALUES

MAX FL: 200008

REMARKS

THE LOWEST CYCLE OF FILE IS PURGED, IF POSSIBLE. AT LEAST 2
CYCLES ARE ALWAYS RETAINED.

AUTHOR

DAVID V SOMMER - DTNSRDC CODE 1892.2

DATE WRITTEN: MID-1975

DATE(S) REVISED

PROCEDURE 'RECDELE'

PURPOSE

DELETE ONE OR MORE LOGICAL RECORDS FROM A FILE

FUNCTIONAL CATEGORY: K1

LOCATION OF PROCEDURE

SYSTEM PUBLIC ACCESS PROCEDURE FILE

USAGE

BEGIN,RECDELE,,REC,NREC,PFN1,PFN2,IO,AC,PW1,PW2.

DESCRIPTION OF PARAMETERS

REC - RECORD NUMBER OF FIRST/ONLY LOGICAL RECORD TO BE DELETED
NREC - NUMBER OF LOGICAL RECORDS TO BE DELETED (DEFAULT: 1)
PFN1,2 - 1-20 CHARACTER PERMANENT FILE NAME (IF PFN IS 1-10 CHARACTERS, USE PFN1, OMIT PFN2. IF PFN IS 11-20 CHARACTERS, PUT FIRST 10 IN PFN1 AND THE REST IN PFN2.)
IO - ID UNDER WHICH FILE IS CATALOGED
AC - JOB ORDER NUMBER FOR NEW CATALOG (MAY BE OMITTED)
PW1,PW2 - PASSWORDS

DEFAULT BEGIN STATEMENT

NO MEANINGFUL DEFAULT VALUES

MAX FL: 200008

REMARKS

THE LOWEST CYCLE OF FILE IS PURGED, IF POSSIBLE. AT LEAST 2 CYCLES ARE ALWAYS RETAINED.

AUTHOR

DAVID V SOMMER - DTNSROC CODE 1892.2

DATE WRITTEN: MID-1975

DATE(S) REVISED

PROCEDURE 'RECDOC'

PURPOSE

LIST DOCUMENTATION FOR PROCEDURES RECADD, RECDELE, RECDOC,
RECGET, RECREFL

FUNCTIONAL CATEGORIES: 01

LOCATION OF PROCEDURE

SYSTEM PUBLIC ACCESS PROCEDURE FILE

USAGE

BEGIN,RECDOC,,OUTPUT,LEFT.

DESCRIPTION OF PARAMETERS

OUTPUT - LISTABLE OUTPUT

LEFT - OMITTED - PRINT LEFT-JUSTIFIED ON PAGE

NON-BLANK - PRINT CENTERED ON WIDE PAGE

DEFAULT BEGIN STATEMENT

BEGIN,RECDOC,,OUTPUT.

MAX FL: 25000B

REMARKS

A BANNER PAGE PRECEDES THE LIST AND CONTAINS THE WORD
'RECDOC'. A BANNER PAGE WITH THE WORD 'END' FOLLOWS THE
LIST.

AUTHOR

DAVID V SOMMER - DTNSRDC CODE 1892.2

DATE WRITTEN: 02/10/77

DATE(S) REVISED

PROCEDURE 'RECGET'

PURPOSE

EXTRACT ONE OR MORE LOGICAL RECORDS FROM A FILE

FUNCTIONAL CATEGORY: K1

LOCATION OF PROCEDURE

SYSTEM PUBLIC ACCESS PROCEDURE FILE

USAGE

BEGIN,RECGET,,REC,NREC,PFN1,PFN2, ID.

DESCRIPTION OF PARAMETERS

- REC - RECORD NUMBER OF FIRST/ONLY LOGICAL RECORD TO BE EXTRACTED
- NREC - NUMBER OF LOGICAL RECORDS TO BE EXTRACTED (DEFAULT: 1)
- PFN1,2 - 1-20 CHARACTER PERMANENT FILE NAME (IF PFN IS 1-10 CHARACTERS, USE PFN1, OMIT PFN2. IF PFN IS 11-20 CHARACTERS, PUT FIRST 10 IN PFN1 AND THE REST IN PFN2.)
- ID - ID UNDER WHICH FILE IS CATALOGED

DEFAULT BEGIN STATEMENT

NO MEANINGFUL DEFAULT VALUES

MAX FL: 200008

REMARKS

THE EXTRACTED RECORD(S) WILL BE ON A FILE WITH LFN OF R FOLLOWED BY THE VALUE OF REC (E.G., BEGIN,RECGET,,8,.... WILL CREATE FILE R8. THIS FILE MAY BE CATALOGED. IT IS NOT REWOUND AT THE END OF THE PROCEDURE.

AUTHOR

DAVID V SOMMER - DTNSRDC CODE 1892.2

DATE WRITTEN: MID-1975

DATE(S) REVISED

PROCEDURE 'RECREPL'

PURPOSE

REPLACE ONE OR MORE LOGICAL RECORDS IN A FILE

FUNCTIONAL CATEGORY: K1

LOCATION OF PROCEDURE

SYSTEM PUBLIC ACCESS PROCEDURE FILE

USAGE

BEGIN,RECREPL,,REC,NREC,NEW,PFN1,PFN2,ID,AC,PW1,PW2.

DESCRIPTION OF PARAMETERS

REC - RECORD NUMBER OF FIRST/ONLY LOGICAL RECORD TO BE REPLACED
NREC - NUMBER OF LOGICAL RECORDS TO BE REPLACED (DEFAULT: 1)
NEW - LFN OF FILE CONTAINING NEW RECORD(S)
PFN1,2 - 1-20 CHARACTER PERMANENT FILE NAME (IF PFN IS 1-10 CHARACTERS, USE PFN1, OMIT PFN2. IF PFN IS 11-20 CHARACTERS, PUT FIRST 10 IN PFN1 AND THE REST IN PFN2.)
ID - ID UNDER WHICH FILE IS CATALOGED
AC - JOB ORDER NUMBER FOR NEW CATALOG (MAY BE OMITTED)
PW1,PW2 - PASSWORDS

DEFAULT BEGIN STATEMENT

NO MEANINGFUL DEFAULT VALUES

MAX FL: 200008

REMARKS

THE LOWEST CYCLE OF FILE IS PURGED, IF POSSIBLE. AT LEAST 2 CYCLES ARE ALWAYS RETAINED.

AUTHOR

DAVID V SOMMER - DTNSRDC CODE 1892.2

DATE WRITTEN: MID-1975

DATE(S) REVISED

PROCEDURE 'RENAMAC'

PURPOSE

RENAME AC FIELD ON PERMANENT FILES

FUNCTIONAL CATEGORY: Q4

LOCATION OF PROCEDURE

SYSTEM PUBLIC ACCESS PROCEDURE FILE

USAGE

BEGIN,RENAMAC,,OLD,NEW,ID,OUTPUT,PW1,PW2,PW3,PW4,PW5,TYPE.

DESCRIPTION OF PARAMETERS

OLD - OLD AC (MUST BE SPECIFIED)
NEW - NEW AC (MUST BE SPECIFIED)
ID - ID OF FILES TO BE RENAMED
(MUST BE SPECIFIED IF TYPE=DYNAMIC)
OUTPUT - LISTABLE OUTPUT
PW1-PW5 - UP TO 5 PASSWORDS FOR ALL FILES TO BE RENAMED
(ONLY TK, RD AND CN PASSWORDS ARE REQUIRED)
TYPE - OMITTED OR DYNAMIC - DYNAMIC AUDIT USED
STATIC - STATIC AUDIT (USUALLY END OF
PREVIOUS DAY) USED

DEFAULT BEGIN STATEMENT

NO MEANINGFUL DEFAULT VALUES (EXCEPT TYPE=DYNAMIC)

MAX FL: 350003

REMARKS

- 1) PROCEDURE WILL AUDIT SPECIFIED ID AND OLD AC. ALL THESE FILES WILL BE RENAMED.
- 2) MOST PF ATTACH AND RENAME ERRORS WILL NOT BE FATAL. INVALID TK, RD PASSWORDS WILL ABORT THE PROCEDURE.
- 3) ALTHOUGH STATIC AUDIT DOES NOT REQUIRE ID, IT SHOULD BE USED TO SHORTEN THE STATIC AUDIT SEARCH.

AUTHOR

DAVID V SOMMER - DTNSRDC CODE 1892.2

DATE WRITTEN: 06/01/75

DATE(S) REVISED

04/18/77 - MODIFY FOR NOS/BE SHORT AUDIT
09/30/77 - ADD TYPE PARAMETER

PROCEDURE 'RUNBAS'

PURPOSE

COMPILE AND EXECUTE BASIC PROGRAM (SIMILAR TO EDITOR RUN,BAS
FOR USE OUTSIDE OF EDITOR)

FUNCTIONAL CATEGORY: L2

LOCATION OF PROCEDURE

SYSTEM PUBLIC ACCESS PROCEDURE FILE

USAGE

BEGIN,RUNBAS,,F,OUT.

DESCRIPTION OF PARAMETERS

F - INPUT SOURCE FILE (REWOUND BEFORE COMPILE)

OUT - LISTABLE OUTPUT (NOT REWOUND)

(IF OUT=0, NO LIST IS PROVIDED, ERROR MESSAGES PRINT
AT TERMINAL)

DEFAULT BEGIN STATEMENT

BEGIN,RUNBAS,,*,OUT.

(* - NO DEFAULT)

MAX FL: 40000B

REMARKS

INPUT AND OUTPUT ARE CONNECTED BEFORE THE BASIC COMPILER
IS CALLED.

ERROR MESSAGES

NO INPUT FILE.

USER DID NOT SPECIFY AN INPUT FILE (PARAMETER 'F')

AUTHOR

DAVID V SOMMER - DTNSRDC CODE 1892.2

DATE WRITTEN: 08/25/77

DATE(S) REVISED

PROCEDURE 'RUNFTN'

PURPOSE

COMPILE AND EXECUTE FTN PROGRAM (SIMILAR TO EDITOR RUN,FTN
FOR USE OUTSIDE OF EDITOR)

FUNCTIONAL CATEGORY: L2

LOCATION OF PROCEDURE

SYSTEM PUBLIC ACCESS PROCEDURE FILE

USAGE

BEGIN,RUNFTN,,F,LGO.

DESCRIPTION OF PARAMETERS

F - FILE TO BE COMPILED
(MUST BE SPECIFIED - AVOID LFN 'INPUT')
LGO - FILE TO CONTAIN RELOCATABLE OBJECT MODULE

DEFAULT BEGIN STATEMENT

NO MEANINGFUL DEFAULT VALUES

MAX FL: 46000B

REMARKS

AFTER COMPLETION, INPUT AND OUTPUT ARE CONNECTED.

ERROR MESSAGES

NO INPUT FILE.
USER DID NOT SPECIFY AN INPUT FILE (PARAMETER 'F')

AUTHOR

SHARON E GOOD - DTNSRDC CODE 1892.1

DATE WRITTEN: 07/27/77

DATE(S) REVISED

PROCEDURE 'RUNMNF'

PURPOSE
 COMPILER AND EXECUTE MNF PROGRAM

FUNCTIONAL CATEGORY: L2

LOCATION OF PROCEDURE
 SYSTEM PUBLIC ACCESS PROCEDURE FILE

USAGE
 BEGIN,RUNMNF,,F.

DESCRIPTION OF PARAMETER
 F - FILE TO BE COMPILED
 (MUST BE SPECIFIED - AVOID LFN 'INPUT')

DEFAULT BEGIN STATEMENT
 NO MEANINGFUL DEFAULT VALUES

MAX FL: 53008 MINIMUM (NO EFL NEEDED)

REMARKS
 AFTER COMPLETION, INPUT AND OUTPUT ARE CONNECTED.

ERROR MESSAGES
 NO INPUT FILE.
 USER DID NOT SPECIFY AN INPUT FILE (PARAMETER 'F')

AUTHOR
 DAVID V SOMMER - DTNSRDC CODE 1892.2

DATE WRITTEN: 07/29/77

DATE(S) REVISED
 08/24/77

PROCEDURE 'RUNSEQ'

PURPOSE

COMPILE AND EXECUTE FTN,SEQ PROGRAM

FUNCTIONAL CATEGORY: L2

LOCATION OF PROCEDURE

SYSTEM PUBLIC ACCESS PROCEDURE FILE

USAGE

BEGIN,RUNSEQ,,F,LGO.

DESCRIPTION OF PARAMETERS

F - FILE TO BE COMPILED

(MUST BE SPECIFIED - AVOID LFN 'INPUT')

LGO - FILE TO CONTAIN RELOCATABLE OBJECT MODULE

DEFAULT BEGIN STATEMENT

NO MEANINGFUL DEFAULT VALUES

MAX FL: 400008

REMARKS

AFTER COMPLETION, INPUT AND OUTPUT ARE CONNECTED.

ERROR MESSAGES

NO INPUT FILE.

USER DID NOT SPECIFY AN INPUT FILE (PARAMETER 'F')

AUTHOR

SHARON E GOOD - DTNSRDC CODE 1892.1

DATE WRITTEN: 07/27/77

DATE(S) REVISED

PROCEDURE 'RUNTS'

PURPOSE
 COMPIL AND EXECUTE FTN,TS PROGRAM

FUNCTIONAL CATEGORY: L2

LOCATION OF PROCEDURE
 SYSTEM PUBLIC ACCESS PROCEDURE FILE

USAGE
 BEGIN,RUNTS,,F,LGO.

DESCRIPTION OF PARAMETERS
 F - FILE TO BE COMPILED
 (MUST BE SPECIFIED - AVOID LFN 'INPUT')
 LGO - FILE TO CONTAIN RELOCATABLE OBJECT MODULE

DEFAULT BEGIN STATEMENT
 NO MEANINGFUL DEFAULT VALUES

MAX FL: 400008

REMARKS
 AFTER COMPLETION, INPUT AND OUTPUT ARE CONNECTED.

ERROR MESSAGES
 NO INPUT FILE.
 USER DID NOT SPECIFY AN INPUT FILE (PARAMETER 'F')

AUTHOR
 SHARON E GOOD - DTNSRDC CODE 1892.1

DATE WRITTEN: 07/27/77

DATE(S) REVISED

PROCEDURE 'SELDUMP'

PURPOSE

CREATE BACKUP DUMP TAPE OF THE USER PERMANENT FILE OF AN
ACCOUNT NUMBER

FUNCTIONAL CATEGORY: Q4 K3

LOCATION OF PROCEDURE

SYSTEM PUBLIC ACCESS PROCEDURE FILE

USAGE

BEGIN,SELDUMP,,AC,VSN1,VSN2.

DESCRIPTION OF PARAMETERS

AC - MUST MATCH ACCOUNT FIELD OF CHARGE CARD
VSN1 - TAPE DIEBOLD OR SLOT NUMBER
(6 CHARACTERS OR LESS)
VSN2 - EXTERNAL STICKER LABEL
(SLOT TAPES ONLY)

DEFAULT BEGIN STATEMENT

NO MEANINGFUL DEFAULT VALUES

MAX FL:

REMARKS

NONE

EXAMPLE

CXXXXYY,MT1,....
CHARGE,CXXX,1234567890,....
BEGIN,SELDUMP,,1234567890,CA9999.
" 6/7/8/9 EOF

AUTHOR

SHARON E GOOD - DTNSRDC CODE 1892.1

DATE WRITTEN: EARLY 1975

DATE(S) REVISED

PROCEDURE 'SELLOAD'

PURPOSE

RESTORE SELECTED ROUTINES FROM A BACKUP DUMPF TAPE

FUNCTIONAL CATEGORIES: Q4 K4

LOCATION OF PROCEDURE

SYSTEM PUBLIC ACCESS PROCEDURE FILE

USAGE

BEGIN,SELLOAD,,VSN1,VSN2.

DESCRIPTION OF PARAMETERS

VSN1 - TAPE DIEBOLD OR SLOT NUMBER
(6 CHARACTERS OR LESS)
VSN2 - EXTERNAL STICKER LABEL
(SLOT TAPES ONLY)

DEFAULT BEGIN STATEMENT

NO MEANINGFUL DEFAULT VALUES

MAX FL:

REMARKS

NONE

DATA CARDS

ONE CARD PER FILE, CONTAINING ONE OF THE FOLLOWING:
PF=PFNAME,ID=CXXX,CY=NN. TO RESTORE CYCLE NN
PF=PFNAME,ID=CXXX. TO RESTORE ALL CYCLES

EXAMPLE

CXXXYYY,MT1,....
CHARGE,CXXX,1234567890,....
BEGIN,SELLOAD,,CA9999.
" 7/8/9 EOR
PF=PFN1,ID=CXXX. ALL CYCLES
PF=PFN2,ID=CXXX,CY=4. ONLY CYCLE 4
" ..
" 6/7/8/9 EOF

AUTHOR

SHARON E GOOD - DTNSPDC CODE 1892.1

DATE WRITTEN: EARLY 1975

DATE(S) REVISED

PROCEDURE 'SEND'

PURPOSE

SEND MESSAGES TO AN INTERCOM USER WHO IS NOT LOGGED IN;
LIST MESSAGES

FUNCTIONAL CATEGORY: Q0

LOCATION OF PROCEDURE

SYSTEM PUBLIC ACCESS PROCEDURE FILE

USAGE

BEGIN,SEND,,FCN,<PARAMETERS>.

DESCRIPTION OF PARAMETERS

FCN - ONE OF THE FOLLOWING:
A OR ANY - CHECK FOR ANY MESSAGES
C OR CREATE - CREATE A MAILBOX
E OR EXPLAIN - TYPE EXPLANATION OF PROCEDURE
L OR LIST - LIST CONTENTS OF MAILBOX
S OR SEND - SEND TO ANOTHER MAILBOX
(DEFAULT)
<PARAMETERS> - NOT USED BY FUNCTIONS ANY, CREATE OR EXPLAIN.
OPTIONAL FOR LIST AND SEND (SEE FUNCTION
DESCRIPTIONS BELOW)

DEFAULT BEGIN STATEMENT

NO MEANINGFUL DEFAULT VALUES

MAX FL: 350009

REMARKS

IN ORDER TO RECEIVE MESSAGES, THE USER MUST HAVE A
PERMANENT FILE NAMED 'SENDFIL', HAVING NO PASSWORDS.

FUNCTIONS

ANY

BEGIN,SEND,,ANY.

THIS FUNCTION CHECKS TO SEE IF THERE ARE ANY MESSAGES.

CREATE

BEGIN,SEND,,CREATE.

CREATE A PERMANENT FILE WITH PFN OF 'SENDFIL'.

THIS IS REQUIRED BEFORE A USER CAN RECEIVE MESSAGES.

LIST

BEGIN,SEND,,LIST,OUTPUT.

LIST ANY MESSAGES ON FILE 'OUTPUT' (PARAMETER MAY BE OMITTED. IF 'OUTPUT' IS NOT CONNECTED, THE USER IS INFORMED THAT THE FILE WAS WRITTEN.

IN LISTING, IF THE FIRST CHARACTER OF A LINE IS 1, SPACE, 0, - OR +, IT IS TREATED AS CARRIAGE CONTROL. ALL OTHER LINES ARE SHIFTED ONE PLACE TO THE RIGHT BEFORE LISTING.

AFTER LISTING, THE USER IS ASKED WHETHER THE MESSAGES SHOULD BE SCRATCHED. THE USER MUST RESPOND Y OR YES (FOR YES) OR ANYTHING ELSE (FOR NO).

SEND

BEGIN,SEND,,SEND,TO,INPUT.

BEGIN,SEND,,,TO,INPUT.

SEND MESSAGES TO USER 'TO' (4-CHARACTER USER ID OR U FOR USERSERVIC). IF OMITTED OR INVALID, THE USER IS PROMPTED FOR A 4-CHARACTER USER ID (MUST START WITH A, C, P, R, S) OR USERSERVIC (MAY BE ABBREVIATED U OR USER).

IF THE NEXT PARAMETER (INPUT) IS OMITTED (OR 'INPUT'), THE MESSAGES ARE READ FROM THE TERMINAL. IF THE PARAMETER IS GIVEN AND IS NOT 'INPUT', THE LOCAL FILE OF THAT NAME IS REWOUND AND COPIED THRU END-OF- INFORMATION. A MESSAGE IS TYPED STATING THAT THE FILE IS BEING READ.

MESSAGES ARE UP TO 80 CHARACTERS LONG; THE FIRST OF WHICH MAY BE USED FOR CARRIAGE CONTROL.

MESSAGES

GENERAL

INVALID FUNCTION - MUST BE ONE OF
ANY - CREATE - EXPLAIN - LIST - SEND
FIRST PARAMETER OF EXECJTE STATEMENT WAS INVALID

FUNCTION ANY--

SOMEONE IS SENDING YOU A MESSAGE
CANNOT ACCESS YOUR SENDFIL UNTIL SENDER COMPLETES THE MESSAGE

UNEXPECTED RETURN CODE (NNNB) FROM ATTACH
PLEASE TRY AGAIN LATER
IF SAME ERROR OCCURS AGAIN, SEE CCRM, 3-7, AND/OR CALL USER SERVICES

YOU DO NOT HAVE A SENDFIL
TO CREATE ONE, USE BEGIN,SEND,,CREATE.

YOU HAVE NO MESSAGES

YOU HAVE SOME MESSAGES
TO LIST THEM, USE BEGIN,SEND,,LIST,OUTPUT.

FUNCTION CREATE--

CT ID= XXXX PFN=SENDFIL
CT CY= NNN 0000000 PRUS \$0000.00 /DAY
CREATE WAS SUCCESSFUL

ERROR DURING CATALOG
PLEASE TRY AGAIN LATER
COULD NOT CATALOG

ERROR TRYING TO GET PF SPACE
PLEASE TRY AGAIN LATER
COULD NOT GET PERMANENT FILE SPACE

YOU ALREADY HAVE A SENDFIL
CANNOT CREATE A SECOND SENDFIL

FUNCTION LIST--

EX ID= XXXX PFN=SENDFIL
EX CY= NNN 0000000 PRUS \$0000.00 /DAY
SENDFIL CONTENTS WERE SUCCESSFULLY SCRATCHED

MESSAGES WRITTEN ON FILE <LFN>
OUTPUT FILE <LFN> IS NOT CONNECTED AND CONTAINS
LISTING OF MESSAGES.

SHALL I SCRATCH THE MESSAGES (Y OR N) --
ENTER Y OR YES TO CLEAR THE MESSAGES.
ENTER ANYTHING ELSE TO RETAIN THEM.

SORRY - SOMEONE IS SENDING YOU A MESSAGE
PLEASE TRY AGAIN LATER
CANNOT LIST MESSAGES WHILE SOMEONE IS SENDING YOU ONE

UNEXPECTED RETURN CODE (NNNB) FROM ATTACH
PLEASE TRY AGAIN LATER
ERROR WHILE ATTACHING YOUR SENDFIL. IF IT HAPPENS
AGAIN, SEE CCRM, 3-7, AND/OR CALL USER SERVICES.

FUNCTION SEND--

CALL AGAIN
RESPONSE TO USER ENTRY OF 'QUIT'

ENTER YOUR MESSAGES - END WITH END
BEGIN ENTERING UP-TO-80-CHARACTER MESSAGES. END WITH
SEPARATE LINE CONTAINING END AND NO OTHER NON-BLANK
CHARACTERS. THERE IS NO MORE PROMPTING UNTIL END IS
ENCOUNTERED.

FROM: YOUR-USER-ID
TO : TO-USER-ID
SENDFIL WAS SUCCESSFULLY ATTACHED

INVALID. MUST BE USERSERVIC OR 4 CHARACTERS STARTING
WITH A, C, P, R OR S.

PLEASE RE-ENTER IT (OR 'QUIT' TO STOP)-

ENTER ONE OF THE FOLLOWING:

4-CHARACTER USER-ID (START WITH A/C/P/R/S)

USERSERVIC (OR U OR USER)

QUIT

READING FROM FILE XXXXXXX

MESSAGES ARE BEING READ FROM INDICATED FILE

SORRY - I COULDN'T SEND YOUR MESSAGES

PLEASE TRY AGAIN LATER

EXTEND OF SENDFIL FAILED

SORRY, XXXX IN NOT ACCESSIBLE

SPECIFIED USER'S SENDFIL IS BEING USED BY SOMEONE ELSE

SORRY, XXXX CANNOT RECEIVE MESSAGES

SPECIFIED USER DOES NOT HAVE A FILE CALLED SENDFIL

TO WHOM (4-CHARACTER USER- ID -OR- USERSERVIC)-

USER-ID ON EXECUTE CARD WAS OMITTED OR INVALID. ENTER
IT NOW.

... TRUNCATED

ONLY FIRST 80 CHARACTERS READ. LISTED CHARACTERS
IGNORED.

YOUR MESSAGE HAS BEEN SENT

THE SENDFIL WAS SUCCESSFULLY EXTENDED

AUTHOR

DAVID V SOMMER - DTNSRDC CODE 1892.2

DATE WRITTEN: 05/20/77

DATE(S) REVISED

PROCEDURE 'STRUCT'

PURPOSE

GENERATE CROSS-REFERENCE LISTS AND TREE STRUCTURE FROM
BINARY RELOCATABLE OBJECT FILE

FUNCTIONAL CATEGORY: Q6

LOCATION OF PROCEDURE

SYSTEM PUBLIC ACCESS PROCEDURE FILE

USAGE

BEGIN,STRUCT,,LFN,OUTPUT,RFL.

DESCRIPTION OF PARAMETERS

LFN - RELOCATABLE FILE TO BE PROCESSED (DEFAULT: LGO)
OUTPUT - LISTABLE OUTPUT
RFL - FL NEEDED FOR EXECUTION OF STRUCTURE PROGRAM
(DEFAULT OF 30000 IS SUFFICIENT FOR MOST FILES)
(USER'S FL IS RESTORED TO THE SYSTEM DEFAULT)

DEFAULT BEGIN STATEMENT

BEGIN,STRUCT,,LGO,OUTPUT,30000.

MAX FL: 30000B (OR AS USER SPECIFIES IN THIRD PARAMETER)

REMARKS

THIS PROCEDURE USES A PROGRAM WRITTEN AT THE CONSTRUCTION
ENGINEERING RESEARCH LABORATORY (CERL), COMPUTER SERVICES
BRANCH.

ERROR MESSAGES

ABNORMAL TERMINATION
IF NO OTHER ERRORS LISTED, INCREASE RFL
USER-SPECIFIED (OR DEFAULT) RFL WAS NOT SUFFICIENT.
THE PROCEDURE ENDS WITH 'REVERT,ABORT'.

<OUTPUT> CONTAINS STRUCTURE OF FILE <LFN>
PROCEDURE WAS SUCCESSFUL

AUTHOR

DAVID V SOMMER - DTNSRDC CODE 1892.2

DATE WRITTEN: 07/06/77

DATE(S) REVISED

PROCEDURE 'S2K260'

PURPOSE

ATTACH FILES FOR S2000 (VERSION 2.60) NATURAL LANGUAGE,
FORTRAN, OR COBOL PROCEDURAL LANGUAGE INTERFACE.

FUNCTIONAL CATEGORY: Q3

LOCATION OF PROCEDURE

SYSTEM PUBLIC ACCESS PROCEDURE FILE.

JSAGE

BEGIN,S2K260,,LANG.

DESCRIPTION OF PARAMETER

LANG - COB FOR COBOL LANGUAGE INTERFACE ROUTINE
- FOR FOR FORTRAN LANGUAGE INTERFACE ROUTINE
- OMITTED NATURAL LANGUAGE

DEFAULT BEGIN STATEMENT

BEGIN,S2K260. USE NATURAL LANGUAGE ONLY

MAX FL: 150008

REMARKS

THIS PROCEDURE ATTACHES THE FILES FOR SYSTEM 2000
VERSION 2.60. DO NOT USE BEFORE READING THE NEWSLETTER
FROM MRI REGARDING THE FEATURES AND DIFFERENCES IN THIS
VERSION OF SYSTEM 2000 (APRIL 1977).

EXAMPLES.

FOR NATURAL LANGUAGE: BEGIN,S2K260.
S2K260,,,,. EXECUTE S2K

FOR COBOL INTERFACE: BEGIN,S2K260,,COB.
PLICOB,,,,. PRECOMPILER
COPYR,PLILGO,LGO,2.
COBOL,I=TAPE3,,,,. REQUIRED
FTN,I=TAPE3.
COPYF,PLILGO,LGO. EXECUTE
LGO.

FOR FORTRAN INTERFACE: BEGIN,S2K260,,FOR.
PLIFOR,,,,. PRECOMPILER
COPYR,PLIG0,LGO,2.
FTN,I=TAPE3,,,,.
COPYF,PLILGO,LGO. EXECUTE
LGO.

AUTHOR.

SHARON E GOOD - DTNSRDC CODE 1892.1
BRUCE D BLACK - DTNSRDC CODE 1892.1 (CDC)

DATE WRITTEN: 06/20/77

PROCEDURE 'S2000'

PURPOSE

ATTACH OR RETURN FILES FOR S2000 NATURAL LANGUAGE, FTN OR
COBOL PROCEDURAL LANGUAGE INTERFACE FROM PROPER DEVICE.

FUNCTIONAL CATEGORY: Q3

LOCATION OF PROCEDURE

SYSTEM PUBLIC ACCESS PROCEDURE FILE

USAGE

BEGIN,S2000,,LANG.

DESCRIPTION OF PARAMETER

LANG - COB FOR COBOL LANGUAGE INTERFACE ROUTINE
- FOR FOR FORTRAN LANGUAGE INTERFACE ROUTINE
- OMITTED NATURAL LANGUAGE
- RETURN RETURN SYSTEM 2000 FILES

DEFAULT BEGIN STATEMENT

BEGIN,S2000. USE NATURAL LANGUAGE ONLY

MAX FL: 15000B

REMARKS

USER MUST SUPPLY ACTUAL CALLS TO SYSTEM 2000 INTERFACE.

EXAMPLES

FOR NATURAL LANGUAGE: BEGIN,S2000.
S2K240,..... EXECUTE S2K

FOR COBOL INTERFACE: BEGIN,S2000,,COB.
PLICOB,..... PRECOMPILER
COPYR,PLILGO,LGO,2.
COBOL,I=TAPE3,.....
FTN,I=TAPE3. REQUIRED
COPYF,PLILGO,LGO.
LGO. BEGIN EXECUTION

FOR FORTRAN INTERFACE: BEGIN,S2000,,FOR.
PLIFOR,..... PRECOMPILER
COPYR,PLILGO,LGO,2.
FTN,I=TAPE3,.....
COPYF,PLILGO,LGO.
LGO.

TO RETURN FILES : BEGIN,S2000,,RETURN.

AUTHOR

SHARON E GOOD - DTNSRDC CODE 1892.1

DATE WRITTEN: 10/15/76

DATE(S) REVISED

02/18/77 - ADD RETURN OPTION.
ALLOW PROCEDURE TO BE EXECUTED MORE THAN ONCE.

PROCEDURE 'TIDBITS'

PURPOSE

LIST FILE OF TIDBITS (HINTS ON IMPROVED COMPUTER USAGE)

FUNCTIONAL CATEGORY: 01

LOCATION OF PROCEDURE

SYSTEM PUBLIC ACCESS PROCEDURE FILE

USAGE

BEGIN,TIDBITS,,OUTPUT,LEFT.

DESCRIPTION OF PARAMETERS

OUTPUT - LISTABLE OUTPUT

LEFT - OMITTED OR 'LEFT' - PRINT ON LEFT SIDE OF PAGE
ANYTHING ELSE - PRNT CENTERED ON WIDE PAPER

DEFAULT BEGIN STATEMENT

BEGIN,TIDBITS,,OUTPUT,LEFT.

MAX FL: 32000B

REMARKS

NONE

MESSAGES

<OUTPUT> HAS TIDBITS

INDICATES SUCCESSFUL COMPLETION (LEFT-JUSTIFIED PRINTOUT)

<OUTPUT> HAS TIDBITS (CENTERED)

INDICATES SUCCESSFUL COMPLETION (CENTERED PRINTOUT)

AUTHOR

DAVID V SOMMER - DTNSRDC CODE 1892.2

DATE WRITTEN: 08/01/77

DATE(S) REVISED

PROCEDURE 'TRANPAK'

PURPOSE

COPY CONTENTS FROM ONE DEVICE SET TO ANOTHER FOR BACKUP

FUNCTIONAL CATEGORY: K3

LOCATION OF PROCEDURE

SYSTEM PUBLIC ACCESS PROCEDURE FILE

USAGE

BEGIN,TRANPAK,,VSNF,FS,RDF,CNF,MDF,VSNT,TS.

DESCRIPTION OF PARAMETERS

VSNF - VSN OF PACK COPIED FROM
FS - SETNAME COPIED FROM
RDF - USER READ PASSWORD INITIALIZED ON DUM FILE
CNF - USER CONTROL PASSWORD INITIALIZED ON DUM FILE
MDF - USER MODIFY PASSWORD INITIALIZED ON DUM FILE
VSNT - VSN OF PACK TO COPY TO
TS - SETNAME TO COPY TO

DEFAULT BEGIN STATEMENT

NO MEANINGFUL DEFAULT VALUES

MAX FL:

REMARKS

OUTPUT IS A LIST OF FILES MOVED WITH ID AND CYCLE
OF EACH.

EXAMPLE

BEGIN,TRANPAK,,DVS299,SG1PK,RDPW,CNPW,MDPW,DVS476,SG2PK.

AUTHOR

SHARON E GOOD - DTNSRDC CODE 1892.1

DATE WRITTEN: 1976

DATE(S) REVISED

PROCEDURE 'UPDADD'

PURPOSE

ADD ONE DECK TO AN UPDATE LIBRARY

FUNCTIONAL CATEGORIES: K3 Q7

LOCATION OF PROCEDURE

SYSTEM PUBLIC ACCESS PROCEDURE FILE

USAGE

BEGIN,UPDADD,,LIB, ID,PROG,AFTER,LFN,AC,PW1,PW2,C,S.

DESCRIPTION OF PARAMETERS

LIB - FIRST PART OF PFN
(FULL PFN IS LIB_PL)
ID - ID UNDER WHICH IT IS CATALOGED
PROG - DECK NAME OF ROUTINE TO BE ADDED
(*DECK PROG' IS GENERATED AUTOMATICALLY)
AFTER - DECK NAME IT IS TO FOLLOW
(IF OMITTED, NEW DECK GOES AT END OF LIBRARY)
LFN - LFN OF FILE CONTAINING DECK TO BE ADDED
(NO *DECK CARD)
AC - JOB ORDER NUMBER FOR CATALOG
(MAY BE OMITTED)
PW1,PW2 - PASSWORDS
C - COMPILE FILE (0 FOR NONE)
S - SOURCE FILE (0 FOR NONE)

DEFAULT BEGIN STATEMENT

NO MEANINGFUL DEFAULT VALUES

MAX FL: 42000B

REMARKS

THE LOWEST CYCLE OF LIB_PL IS PURGED, IF POSSIBLE. AT LEAST
2 CYCLES ARE ALWAYS RETAINED.

AUTHOR

DAVID V SOMMER - DTNSRDC CODE 1892.2

DATE WRITTEN: 03/110/76

DATE(S) REVISED

PROCEDURE 'UPDDELE'

PURPOSE

DELETE ONE DECK FROM AN UPDATE LIBRARY

FUNCTIONAL CATEGORIES: K3 Q7

LOCATION OF PROCEDURE

SYSTEM PUBLIC ACCESS PROCEDURE FILE

USAGE

BEGIN,UPDDELE,,LIB,ID,PROG,AC,PW1,PW2,S.

DESCRIPTION OF PARAMETERS

LIB - FIRST PART OF PFN
(FULL PFN IS LIB_PL)
ID - ID UNDER WHICH IT IS CATALOGED
PROG - DECK NAME OF ROUTINE TO BE DELETED
(*DECK PROG IS GENERATED AUTOMATICALLY)
AC - JOB ORDER NUMBER FOR CATALOG
(MAY BE OMITTED)
PW1,PW2 - PASSWORDS
S - SOURCE FILE (0 FOR NONE)

DEFAULT BEGIN STATEMENT

NO MEANINGFUL DEFAULT VALUES

MAX FL: 420008

REMARKS

NONE

AUTHOR

DAVID V SOMMER - DTNSRDC CODE 1392.2

DATE WRITTEN: 03/10/76

DATE(S) REVISED

PROCEDURE 'UPDDOC'

PURPOSE

LIST DOCUMENTATION FOR PROCEDURES UPDAAD, UPDELE, UPDDOC,
UPDGET, UPDLIST, UPDREPL

FUNCTIONAL CATEGORIES: 01

LOCATION OF PROCEDURE

SYSTEM PUBLIC ACCESS PROCEDURE FILE

JSAGE

BEGIN,UPDDOC,,OUTPUT,LEFT.

DESCRIPTION OF PARAMETERS

OUTPUT - LISTABLE OUTPUT

LEFT - OMITTED - PRINT LEFT-JUSTIFIED ON PAGE

NON-BLANK - PRINT CENTERED ON WIDE PAGE

DEFAULT BEGIN STATEMENT

BEGIN,UPDDOC,,OUTPUT.

MAX FL: 250008

REMARKS

A BANNER PAGE PRECEDES THE LIST AND CONTAINS THE WORD
'UPDDOC'. A BANNER PAGE WITH THE WORD 'END' FOLLOWS THE
LIST.

AUTHOR

DAVID V SOMMER - DTNSRDC CODE 1892.2

DATE WRITTEN: 02/10/77

DATE(S) REVISED

PROCEDURE 'UPDGET'

PURPOSE

EXTRACT ONE DECK FROM AN UPDATE LIBRARY (UPDATE,C) AND,
OPTIONALLY, ADD EDITOR SEQUENCING

FUNCTIONAL CATEGORIES: K3 Q7

LOCATION OF PROCEDURE

SYSTEM PUBLIC ACCESS PROCEDURE FILE

USAGE

BEGIN,UPDGET,,LIB, ID,DECK,COMPILE,C72,E,START,INCR,PW1,PW2.

DESCRIPTION OF PARAMETERS

LIB - 1-7 CHARACTERS: FIRST PART OF PFN
(FULL PFN IS LIB_PL)
ID - ID UNDER WHICH IT IS CATALOGED
DECK - DECK NAME OF ROUTINE TO BE EXTRACTED
COMPILE - COMPILE FILE (UPDATE,C=COMPILE)
(WILL CONTAIN EXTRACTED DECK, UNLESS C72 USED)
C72 - IF SPECIFIED, WILL CONTAIN 72-COLUMN COPY OF THE
COMPILE FILE. THE COMPILE FILE IS NOT AVAILABLE
TO THE USER.)
E - OMITTED - DO NOT ADD EDITOR SEQUENCING
ANY WORD STARTING WITH 'E' - ADD EDITOR SEQUENCING
(THIS PARAMETER IS EFFECTIVE ONLY IF PARAMETER
'C72' IS SPECIFIED)
START - FIRST EDITOR SEQUENCE NUMBER (IF EDITOR SEQUENCING
REQUESTED) (DEFAULT: 20)
INCR - INCREMENT FOR EDITOR SEQUENCING (DEFAULT: 10)
NOTE: DEFAULT START AND INCR WILL GIVE 10 TIMES
THE COMPILE FILE CARD NUMBERS IF THE DECK HAS
NO MODIFYING IDENTs.
PW1,PW2 - PASSWORDS

DEFAULT BEGIN STATEMENT

NO MEANINGFUL DEFAULT VALUES

MAX FL: 420008

REMARKS

NONE

AUTHOR

DAVID V SOMMER - DTNSRDC CODE 1892.2

DATE WRITTEN: 03/10/76

DATE(S) REVISED

07/13/76 - ADD EDITOR SEQUENCING OPTION

02/04/77 - ADD PASSWORDS

PROCEDURE 'UPDGETS'

PURPOSE

EXTRACT ONE DECK FROM AN UPDATE LIBRARY (UPDATE,S) AND,
OPTIONALLY, ADD EDITOR SEQUENCING

FUNCTIONAL CATEGORIES: K3 Q7

LOCATION OF PROCEDURE

SYSTEM PUBLIC ACCESS PROCEDURE FILE

USAGE

BEGIN,UPDGETS,,LIB,ID,DECK,SOURCE,C72,E,START,INCR,PW1,PW2.

DESCRIPTION OF PARAMETERS

LIB - 1-7 CHARACTERS: FIRST PART OF PFN
(FULL PFN IS LIB_PL)
ID - ID UNDER WHICH IT IS CATALOGED
DECK - DECK NAME OF ROUTINE TO BE EXTRACTED
SOURCE - SOURCE FILE (UPDATE,S=SOURCE)
(COMDECKS, IF ANY, INCLUDED)
(WILL CONTAIN EXTRACTED DECK, UNLESS C72 USED)
C72 - IF SPECIFIED, WILL CONTAIN 72-COLUMN COPY OF THE
COMPILE FILE. THE COMPILE FILE IS NOT AVAILABLE
TO THE USER.)
E - OMITTED - DO NOT ADD EDITOR SEQUENCING
ANY WORD STARTING WITH 'E' - ADD EDITOR SEQUENCING
(THIS PARAMETER IS EFFECTIVE ONLY IF PARAMETER
'C72' IS SPECIFIED)
START - FIRST EDITOR SEQUENCE NUMBER (IF EDITOR SEQUENCING
REQUESTED) (DEFAULT: 20)
INCR - INCREMENT FOR EDITOR SEQUENCING (DEFAULT: 10)
NOTE: DEFAULT START AND INCR WILL GIVE 10 TIMES
THE COMPILE FILE CARD NUMBERS IF THE DECK HAS
NO MODIFYING IDENTs.
PW1,PW2 - PASSWORDS

DEFAULT BEGIN STATEMENT

NO MEANINGFUL DEFAULT VALUES

MAX FL: 420008

REMARKS

NONE

AUTHOR

DAVID V SOMMER - DTNSRDC CODE 1892.2

DATE WRITTEN: 05/13/77

DATE(S) REVISED

PROCEDURE 'UPDGETT'

PURPOSE

EXTRACT ONE DECK FROM AN UPDATE LIBRARY (UPDATE,T) AND,
OPTIONALLY, ADD EDITOR SEQUENCING

FUNCTIONAL CATEGORIES: K3 Q7

LOCATION OF PROCEDURE

SYSTEM PUBLIC ACCESS PROCEDURE FILE

USAGE

BEGIN,UPDGETT,,LIB,ID,DECK,SOURCE,C72,E,START,INCR,PW1,PW2.

DESCRIPTION OF PARAMETERS

LIB - 1-7 CHARACTERS: FIRST PART OF PFN
(FULL PFN IS LIB_PL)
ID - ID UNDER WHICH IT IS CATALOGED
DECK - DECK NAME OF ROUTINE TO BE EXTRACTED
SOURCE - SOURCE FILE (UPDATE,T=SOURCE)
(NO COMDECKS INCLUDED)
C72 - IF SPECIFIED, WILL CONTAIN 72-COLUMN COPY OF THE
COMPILE FILE. THE COMPILE FILE IS NOT AVAILABLE
TO THE USER.)
E - OMITTED - DO NOT ADD EDITOR SEQUENCING
ANY WORD STARTING WITH 'E' - ADD EDITOR SEQUENCING
(THIS PARAMETER IS EFFECTIVE ONLY IF PARAMETER
'C72' IS SPECIFIED)
START - FIRST EDITOR SEQUENCE NUMBER (IF EDITOR SEQUENCING
REQUESTED) (DEFAULT: 20)
INCR - INCREMENT FOR EDITOR SEQUENCING (DEFAULT: 10)
NOTE: DEFAULT START AND INCR WILL GIVE 10 TIMES
THE COMPILE FILE CARD NUMBERS IF THE DECK HAS
NO MODIFYING IDENTs.
PW1,PW2 - PASSWORDS

DEFAULT BEGIN STATEMENT

NO MEANINGFUL DEFAULT VALUES

MAX FL: 420008

REMARKS

NONE

AUTHOR

DAVID V SOMMER - DTNSRDC CODE 1892.2

DATE WRITTEN: 05/13/77

DATE(S) REVISED

PROCEDURE 'UPDLIST'

PURPOSE

LIST DECK/COMDECK NAMES IN UPDATE LIBRARY WITH COUNT OF
RECORDS IN EACH DECK/COMDECK

FUNCTIONAL CATEGORY: Q7

LOCATION OF PROCEDURE

SYSTEM PUBLIC ACCESS PROCEDURE FILE

USAGE

BEGIN,UPDLIST,,LIB,ID,OUTPUT.

DESCRIPTION OF PARAMETERS

LIB - FIRST PART OF PFN
(FULL PFN IS LIB_PL)
ID - ID UNDER WHICH IT IS CATALOGED
OUTPUT - LISTABLE OUTPUT

DEFAULT BEGIN STATEMENT

NO MEANINGFUL DEFAULT VALUES

MAX FL: 420008

REMARKS

UPDATE IS RUN TO GET A SOURCE FILE. THEN PROGRAM 'DECK' ON
UTILITY IS RUN AGAINST THE SOURCE FILE. THEREFORE, ANY
IDENTS WILL NOT BE LISTED, AS THEY HAVE ALREADY BEEN
PROCESSED BY UPDATE.

AUTHOR

DAVID V SOMMER - DTNSRUC CODE 1892.2

DATE WRITTEN: 04/12/76

DATE(S) REVISED

04/23/76
05/04/76
05/25/76

PROCEDURE 'UPDREPL'

PURPOSE

REPLACE ONE DECK IN AN UPDATE LIBRARY

FUNCTIONAL CATEGORIES: K3 Q7

LOCATION OF PROCEDURE

SYSTEM PUBLIC ACCESS PROCEDURE FILE

USAGE

BEGIN,UPDREPL,,LIB,ID,PROG,AFTER,LFN,AC,PW1,PW2,C,S.

DESCRIPTION OF PARAMETERS

LIB - FIRST PART OF PFN
(FULL PFN IS LIB_PL)
ID - ID UNDER WHICH IT IS CATALOGED
PROG - DECK NAME OF ROUTINE TO BE REPLACED
(*DECK PROG IS GENERATED AUTOMATICALLY)
AFTER - DECK NAME IT IS TO FOLLOW
(IF OMITTED, NEW DECK GOES AT END OF LIBRARY)
LFN - LFN OF FILE CONTAINING DECK TO BE REPLACED
(NO *DECK CARD)
AC - JOB ORDER NUMBER FOR CATALOG
(MAY BE OMITTED)
PW1,PW2 - PASSWORDS
C - COMPILE FILE (0 FOR NONE)
S - SOURCE FILE (0 FOR NONE)

DEFAULT BEGIN STATEMENT

NO MEANINGFUL DEFAULT VALUES

MAX FL: 420008

REMARKS

THE LOWEST CYCLE OF LIB_PL IS PURGED, IF POSSIBLE. AT LEAST
2 CYCLES ARE ALWAYS RETAINED.

AUTHOR

DAVID V SOMMER - DTNSRDC CODE 1892.2

DATE WRITTEN: 03/11/76

DATE(S) REVISED

05/25/76 - DOUBLE UPDATE REPLACED BY SINGLE UPDATE

PROCEDURE 'UTILITY'

PURPOSE

EXECUTE A PROGRAM ON EDITLIB USER LIBRARY 'UTILITY'

FUNCTIONAL CATEGORY: Q7

LOCATION OF PROCEDURE

SYSTEM PUBLIC ACCESS PROCEDURE FILE

USAGE

BEGIN,UTILITY,,PROG,PARAMS.

DESCRIPTION OF PARAMETERS

PROG - PROGRAM TO BE EXECUTED

PARAMS - UP TO 19 PARAMETERS FOR 'PROG'

DEFAULT BEGIN STATEMENT

NO MEANINGFUL DEFAULT VALUES

MAX FL: DEPENDS ON PROGRAM BEING EXECUTED

REMARKS

NONE

AUTHOR

DAVID V SOMMER - DTNSRDC CODE 1892.2

DATE WRITTEN: EARLY 1975

DATE(S) REVISED

AD-A045 836

DAVID W TAYLOR NAVAL SHIP RESEARCH AND DEVELOPMENT CE--ETC F/G 9/2
COMPUTER CENTER LIBRARIES/PROFIL (PROCEDURES), (U)
SEP 77 D V SOMMER
CMLD-77-16

UNCLASSIFIED

NL

2 OF 2
ADA045836



END
DATE
FILMED
11-77
DDC

PROCEDURE 'VENUS'

PURPOSE

ATTACH AND EXECUTE ONE OF THE VENUS RETRIEVAL PROGRAMS

FUNCTIONAL CATEGORY: S0

LOCATION OF PROCEDURE

SYSTEM PUBLIC ACCESS PROCEDURE FILE

USAGE

BEGIN, VENUS, , WHICH, INPUT, OUTPUT, SUBSET.

DESCRIPTION OF PARAMETERS

WHICH - VENUS PROGRAM DESIRED
OMITTED - VENUS (SINGLE FILE VERSION)
MF - VENUS (MULTIPLE FILE VERSION)
PL - VENPL (PLOTING LANGUAGE PROCESSOR)
RP - VENRP (REPORT GENERATOR)
INPUT - COMMAND INPUT FILE
(IF TERMINAL, USER MUST 'CONNECT, INPUT')
OUTPUT - LISTABLE OUTPUT
(IF TERMINAL, USER MUST 'CONNECT, OUTPUT')
SUBSET - OUTPUT FILE FOR THE SUBSET COMMAND

DEFAULT BEGIN STATEMENT

BEGIN, VENUS, , , INPUT, OUTPUT, SUBSET.

MAX FL: 61000B (MF MAY NEED MORE)

REMARKS

FOR VENUS PROBLEMS, CONTACT:
RAY SIMANOWITH
DTNSRDC CODE 2731
(301) 267-3240 (ANNAPOLIS)

ERROR MESSAGES

FIRST PARAMETER (<WHICH>) INVALID
MUST BE ONE OF MF, PL, RP OR OMITTED
SELF-EXPLANATORY

AUTHOR

DAVID V SOMMER - DTNSRDC CODE 1892.2

DATE WRITTEN: 09/20/77

DATE(S) REVISED

PROCEDURE 'WHATLIB'

PURPOSE

LIST LIBRARIES SPECIFIED IN LAST 'LIBRARY' COMMAND

FUNCTIONAL CATEGORY: Q0

LOCATION OF PROCEDURE

SYSTEM PUBLIC ACCESS PROCEDURE FILE

USAGE

BEGIN,WHATLIB,,OUTPUT.

DESCRIPTION OF PARAMETER

OUTPUT - LISTABLE OUTPUT

(TO PRINT AT INTERACTIVE TERMINAL, MUST BE
CONNECTED.)

DEFAULT BEGIN STATEMENT

BEGIN,WHATLIB,,OUTPUT.

MAX FL: 220008

REMARKS

OF LIMITED USE IN BATCH.

AUTHOR

DAVID V SOMMER - DTNSROC CODE 1892.2

DATE WRITTEN: MID-1975

DATE(S) REVISED

INITIAL DISTRIBUTION

Copies:

12 Director
 Defense Documentation Center (TIMA)
 Cameron Station
 Alexandria, Virginia 22314

CENTER DISTRIBUTION

Copies:

1	1800	Gleissner G H
1	1802.2	Frenkiel F N
1	1802.4	Theilheimer F
1	1804	Avrunin L
1	1805	Cuthill E H
1	1809.3	Harris D
1	1820	Camara W
1	1840	Lugt H J
1	1850	Corin T
1	1860	Sulit R A
1	1890	Gray G R
1	189.1	Taylor N M
1	1891	Cooper A E
150	1892.1	Strickland J D
20	1892.2	Sommer D V
1	1892.3	Minor L R
1	1894	Seals W
1	1896	Blackburn P
1	5220	Library

DTNSRDC ISSUES THREE TYPES OF REPORTS

1. DTNSRDC REPORTS, A FORMAL SERIES, CONTAIN INFORMATION OF PERMANENT TECHNICAL VALUE. THEY CARRY A CONSECUTIVE NUMERICAL IDENTIFICATION REGARDLESS OF THEIR CLASSIFICATION OR THE ORIGINATING DEPARTMENT.

2. DEPARTMENTAL REPORTS, A SEMIFORMAL SERIES, CONTAIN INFORMATION OF A PRELIMINARY, TEMPORARY, OR PROPRIETARY NATURE OR OF LIMITED INTEREST OR SIGNIFICANCE. THEY CARRY A DEPARTMENTAL ALPHANUMERICAL IDENTIFICATION.

3. TECHNICAL MEMORANDA, AN INFORMAL SERIES, CONTAIN TECHNICAL DOCUMENTATION OF LIMITED USE AND INTEREST. THEY ARE PRIMARILY WORKING PAPERS INTENDED FOR INTERNAL USE. THEY CARRY AN IDENTIFYING NUMBER WHICH INDICATES THEIR TYPE AND THE NUMERICAL CODE OF THE ORIGINATING DEPARTMENT. ANY DISTRIBUTION OUTSIDE DTNSRDC MUST BE APPROVED BY THE HEAD OF THE ORIGINATING DEPARTMENT ON A CASE-BY-CASE BASIS.